

**CIHM
Microfiche
Series
(Monographs)**

**ICMH
Collection de
microfiches
(monographies)**



Canadian Institute for Historical Microreproductions / Institut canadien de microreproductions historiques

© 1997

Technical and Bibliographic Notes / Notes techniques et bibliographiques

The Institute has attempted to obtain the best original copy available for filming. Features of this copy which may be bibliographically unique, which may alter any of the images in the reproduction, or which may significantly change the usual method of filming, are checked below.

L'Institut a microfilmé le meilleur exemplaire qu'il lui a été possible de se procurer. Les détails de cet exemplaire qui sont peut-être uniques du point de vue bibliographique, qui peuvent modifier une image reproduite, ou qui peuvent exiger une modification dans la méthode normale de filmage sont indiqués ci-dessous.

- Coloured covers/
Couverture de couleur
- Covers damaged/
Couverture endommagée
- Covers restored and/or laminated/
Couverture restaurée et/ou pelliculée
- Cover title missing/
Le titre de couverture manque
- Coloured maps/
Cartes géographiques en couleur
- Coloured ink (i.e. other than blue or black)/
Encre de couleur (i.e. autre que bleue ou noire)
- Coloured plates and/or illustrations/
Planches et/ou illustrations en couleur
- Bound with other material/
Relié avec d'autres documents
- Tight binding may cause shadows or distortion
along interior margin/
La reliure serrée peut causer de l'ombre ou de la
distorsion le long de la marge intérieure
- Blank leaves added during restoration may appear
within the text. Whenever possible, these have
been omitted from filming/
Il se peut que certaines pages blanches ajoutées
lors d'une restauration apparaissent dans le texte,
mais, lorsque cela était possible, ces pages n'ont
pas été filmées.
- Additional comments: /
Commentaires supplémentaires:

- Coloured pages/
Pages de couleur
- Pages damaged/
Pages endommagées
- Pages restored and/or laminated/
Pages restaurées et/ou pelliculées
- Pages discoloured, stained or foxed/
Pages décolorées, tachées ou piquées
- Pages detached/
Pages détachées
- Showthrough/
Transparence
- Quality of print varies/
Qualité inégale de l'impression
- Continuous pagination/
Pagination continue
- Includes index(es)/
Comprend un (des) index
- Title on header taken from: /
Le titre de l'en-tête provient:
- Title page of issue/
Page de titre de la livraison
- Caption of issue/
Titre de départ de la livraison
- Masthead/
Générique (périodiques) de la livraison

This item is filmed at the reduction ratio checked below/
Ce document est filmé au taux de réduction indiqué ci-dessous.

10X	12X	14X	16X	18X	20X	22X	24X	26X	28X	30X	32X
<input type="checkbox"/>	<input type="checkbox"/>	<input type="checkbox"/>	<input type="checkbox"/>	<input type="checkbox"/>	<input type="checkbox"/>	<input checked="" type="checkbox"/>	<input type="checkbox"/>	<input type="checkbox"/>	<input type="checkbox"/>	<input type="checkbox"/>	<input type="checkbox"/>

The copy filmed here has been reproduced thanks to the generosity of:

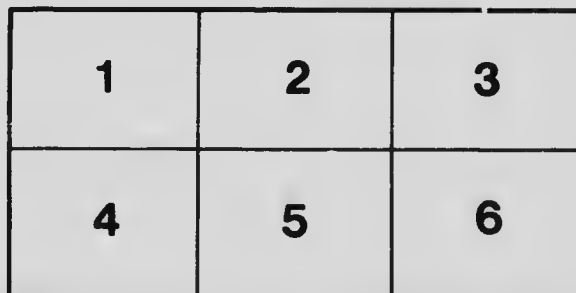
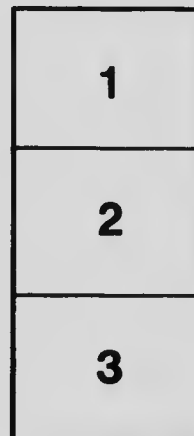
Thomas Fisher Rare Book Library,
University of Toronto Library

The images appearing here are the best quality possible considering the condition and legibility of the original copy and in keeping with the filming contract specifications.

Original copies in printed paper covers are filmed beginning with the front cover and ending on the last page with a printed or illustrated impression, or the back cover when appropriate. All other original copies are filmed beginning on the first page with a printed or illustrated impression, and ending on the last page with a printed or illustrated impression.

The last recorded frame on each microfiche shell contains the symbol \rightarrow (meaning "CONTINUED"), or the symbol ∇ (meaning "END"), whichever applies.

Maps, plates, charts, etc., may be filmed at different reduction ratios. Those too large to be entirely included in one exposure are filmed beginning in the upper left hand corner, left to right and top to bottom, as many frames as required. The following diagrams illustrate the method:



L'exemplaire filmé fut reproduit grâce à la générosité de:

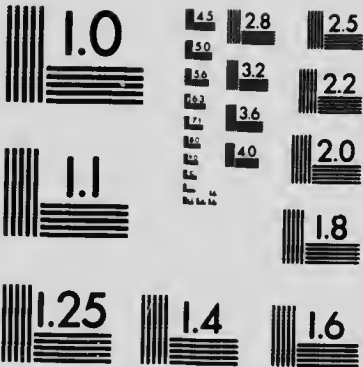
Thomas Fisher Rare Book Library,
University of Toronto Library

Les images suivantes ont été reproduites avec le plus grand soin, compte tenu de la condition et de la netteté de l'exemplaire filmé, et en conformité avec les conditions du contrat de filage.

Les exemplaires originaux dont la couverture en papier est imprimée sont filmés en commençant par le premier plat et en terminant soit par la dernière page qui comporte une empreinte d'impression ou d'illustration, soit par le second plat, selon le cas. Tous les autres exemplaires originaux sont filmés en commençant par la première page qui comporte une empreinte d'impression ou d'illustration et en terminant par la dernière page qui comporte une telle empreinte.

Un des symboles suivants apparaîtra sur la dernière image de chaque microfiche, selon le cas: le symbole \rightarrow signifie "A SUIVRE", le symbole ∇ signifie "FIN".

Les cartes, planches, tableaux, etc., peuvent être filmés à des taux de réduction différents. Lorsque le document est trop grand pour être reproduit en un seul cliché, il est filmé à partir de l'angle supérieur gauche, de gauche à droite, et de haut en bas, en prenant le nombre d'images nécessaire. Les diagrammes suivants illustrent la méthode.



MICROCOPY RESOLUTION TEST CHART
NATIONAL BUREAU OF STANDARDS
STANDARD REFERENCE MATERIAL 1010a
(ANSI and ISO TEST CHART No. 2)

**Birds of
Ontario**



Compiled from the Work of
Thomas Mellwraith

RB97975

BIRDS OF ONTARIO

Compiled from the Work of
Thomas McIlwraith

PREPARED BY AUTHORITY OF
THE EDUCATION DEPARTMENT, ONTARIO.
TORONTO, 1903.

111

112

BIRDS OF ONTARIO.

Mounted specimens, or skins, now in the Provincial Museum
are marked respectively (*m*) and (*s*).

Order PYGOPODES. Diving Birds.

Suborder PODICIPEDES. Grebes and Loons

FAMILY PODICIPIDÆ. GREBES.

GENUS COLYMBUS, LINNÆUS.

SUBGENUS COLYMBUS.

- s* Holbœll's Grebe.—*Colymbus holbœllii*, Reinhart.

SUBGENUS DYTES, KAUP.

- m s* Horned Grebe.—*Colymbus auritus*, Linn.
American Eared Grebe.—*Colymbus nigricollis californicus*,
Heerm.

GENUS PODILYMBUS, LESSON.

- s* Pied-billed Grebe.—*Podilymbus podiceps*, Linn.

FAMILY URINATORIDÆ. LOONS.

GENUS URINATOR, CUVIER.

- s* Loon.—*Urinator imber*, Gunn.
Black-throated Loon.—*Urinator arcticus*, Linn.
m s Red-throated Loon.—*Urinator lunme*, Gunn.

FAMILY ALCIDÆ. AUKS, MURRES AND PUFFINS.

SUBFAMILY FRATERCULINÆ. PUFFINS.

GENUS FRATERCULA, BRISSON.

- m* Common Puffin.—*Fratercula arctica*, Linn.

SURFAMILY PHALERINÆ.

GENUS CEPPHUS, PALLAS.

Black Guillemot.—*Cephus grylle*, Linn.

SUBFAMILY ALCINÆ.

GENUS URIA, BRISSON.

m s Brunnich's Murre.—*Uria lomvia*, Linn.

GENUS ALCA, LINNÆUS.

Razor-billed Auk.—*Alca torda*, Linn.

Auklet (Parrot).—*Alycorrhynchus psitta*.

Order LONGIPENNES. Long-winged Swimmers

FAMILY STERCORARIIDÆ. SKUAS AND JAEGER.

GENUS STERCORARIUS, BRISSON.

Pomarine Jaeger.—*Stercorarius pomarinus*, Temm.

Parasitic Jaeger.—*Stercorarius parasiticus*.

FAMILY LARIDÆ. GULLS AND TERNS.

SUBFAMILY LARINÆ. GULLS.

GENUS GAVIA, BOIE.

Ivory Gull.—*Gavia alba*, Gunn.

GENUS RISSA, STEPHENS.

Kittiwake.—*Rissa tridactyla*, Linn.

Glaucous Gull.—*Larus glaucus*, Brunn.

GENUS LARUS, LINN.

m Great Black-backed Gull.—*Larus marinus*, Linn.

s American Herring Gull.—*Larus argentatus smithsonianus*
coues.

Ring-billed Gull.—*Larus delawarensis*, Ord.

Laughing Gull.—*Larus atricilla*, Linn.

Franklin's Gull.—*Larus franklinii*, Sw. & Rich.

s Bonaparte's Gull.—*Larus philadelpia*, Ord.

SUBFAMILY STERNINÆ TERNS.

GENUS STERNA, LINNÆUS.

SUBGENUS THALASSEUS, BOIE.

- m* Caspian Tern.—*Sterna tschegrava*, Lepech.
 Cabot's Tern.—*Sterna sandvicensis acuflava*, Cabot.

SUBGENUS STERNA.

- Foster's Tern.—*Sterna forsteri*, Nutt.
 Common Tern.—*Sterna hirundo*, Linn.
 Arctic Tern.—*Sterna paradisæ*, Bruhn.

SUBGENUS STERNULA, BOIE.

- m* Least Tern.—*Sterna antillarum*, Less.

GENUS HYDROCHELIDON, BOIE.

- m* Black Tern.—*Hydrochelidon nigra surinamensis*, Gmel.

Order STEGANOPODES. Totipalmate Swimmers.

FAMILY SULIDÆ. GANNETS.

GENUS SULA, BRISSON.

SUBGENUS DYSPORUS, ILLIGER.

- m* Gannet.—*Sula Bassana*, Linn.

FAMILY PHALACROCORACIDÆ. CORMORANTS.

GENUS PHALACROCORAX, BRISSON.

- m* Cormorant.—*Phalacrocorax carbo*, Linn.
 Double-crested Cormorant.—*Phalacrocorax dilophus*, Sw. & Rich.

FAMILY PELECANIDÆ.

SUBGENUS CYRTOPELICANUS, REICHENBACH.

- m* American White Pelican.—*Pelecanus erythrorhynchos*, Gmel.

 Order ANSERES. Lamellirostral Swimmers.

FAMILY ANATIDÆ. DUCKS, GEESE AND SWANS.

SUBFAMILY MERGINÆ. MERGANSERS.

GENUS MERGANSER, BRISSON.

- American Merganser.—*Merganser americanus*, Cass.
 8 Red-breasted Merganser.—*Merganser serrator*, Linn.

GENUS LOPHODYTES, REICHENBACH.

- 8 Hooded Merganser.—*Lophodytes cucullatus*, Linn.

SUBFAMILY ANATINÆ. RIVER DUCKS.

GENUS ANAS, LINNÆUS.

- m Mallard.—*Anas boschas*, Linn.
 ms Black Duck.—*Anas obscura*, Gmel

SUBGENUS CHAULELASMUS, BONAPARTE.

Gadwall.—*Anas strepera*, Linn.

SUBGENUS MARECA, STEPHENS.

Baldpate.—*Anas americana*, Gmel.

SUBGENUS NETTION, KAUP.

- ms Green-winged Teal.—*Anas carolinensis*, Gmelin.

SUBGENUS QUERQUEDULA, STEPHENS.

- 8 Blue-winged Teal.—*Anas discors*, Linn.

GENUS SPATULA, BOIE.

- ms Shoveller.—*Spatula clypeata*, Linn.

GENUS DEFILA, STEPHENS.

Pintail.—*Defila acuta*, Linn.

GENUS AIX, BOIE.

- ms Wood Duck.—*Aix sponsa*, Linn.

GENUS AYTHYA, BOIE.

- 8 Redhead.—*Aythya americana*, Eyt.
 Canvas-back.—*Aythya vallisneria*, Wils.

SUBGENUS FULIGULA, STEPHENS.

- m* American Scaup Duck.—*Aythya marila nearctica*, Stejn.
s Lesser Scaup Duck.—*Aythya affinis*, Eyt.
m Ring-necked Duck.—*Aythya collaris*, Donovan.

GENUS GLAUCIONETTA, STEJNEGER.

- s* American Golden-eye.—*Glaucionetta clangula americana*, Bonap.
 Barrow's Golden-eye.—*Glaucionetta islandica*, Gmel.

GENUS CHARITONETTA, STEJNEGER.

- ms* Buffle-headed Duck.—*Charitonetta albeola*, Linn.

GENUS CLANGULA, LEACH.

- s* Old Squaw ; Long-tailed Duck.—*Clangula hyemalis*, Linn.

GENUS HISTRIONICUS, LESSON.

- Harlequin Duck.—*Histrionicus histrionicus*, Linn.

GENUS SOMATERIA, LEACH.

SUBGENUS SOMATERIA.

- m* American Eider.—*Somateria dresseri*, Sharpe.
m King Eider.—*Somateria spectabilis*, Linn.

GENUS OIDEMIA, FLEMING.

SUBGENUS OIDEMIA.

- m* American Scoter.—*Oidemia americana*, Sw. & Rich.

SUBGENUS MELANITTA, BOIE.

- m s* White-winged Scoter.—*Oidemia deglandi*, Bonap.

SUBGENUS PELIONETTA, KAUP.

- Surf Scoter.—*Oidemia Perspicillata*, Linn.

GENUS ERISMATURA, BONAP.

- m s* Ruddy Duck.—*Erismatura rubida*, Wils.

SUBFAMILY ANSERINÆ. GEESSE.

GENUS CHEN, BOIE.

- Greater Snow Goose.—*Chen hyperborea nivalis*, Forst.

GENUS ANSER, BRISSON.

American White-fronted Goose.—*Anser albifrons gambeli*,
Hartl.

GENUS BRANTA, SCOPOLI.

- m* Canada Goose; Wild Goose.—*Branta canadensis*, Linn.
Hutchin's Goose.—*Branta canadensis hutchinsii*, Sw. & Rich.
m Brant.—*Branta bernicla*, Linn.

SUBFAMILY CYGNINÆ. SWANS.

GENUS OLOR, WAGLER.

Whistling Swan.—*Olor columbianus*, Ord.
Trumpeter Swan.—*Olor buccinator*, Rich.

Order HERODIONES. Herons, Storks. Ibises, etc.

Suborder IBIDES. Spoonbills and Ibises.

FAMILY IBIDIDÆ. IBISES.

GENUS PLEGADIS, KACP.

- m* Glossy Ibis.—*Plegadis autumnalis*, Hasselq.

Suborder HERODII. Herons, Egrets, Bitterns, etc.

FAMILY ARDEIDÆ. HERONS, BITTERNS, ETC.

SUBFAMILY BOTAURINÆ. BITTERNS.

GENUS BOTAURUS, HERMANN.

SUBGENUS BOTAURUS.

- m* American Bittern.—*Botaurus lentiginosus*, Montag.

SUBGENUS ARDETTA, GRAY.

- m s* Least Bittern.—*Botaurus exilis*, Gmel.
m Coly's Bittern.—*Botaurus neoxenus*, Cory.

SUBFAMILY ARDEINÆ. HERONS AND EGRETS.

GENUS ARDEA, LINN.

SUBGENUS ARDEA.

- m s* Great Blue Heron.—*Ardea herodias*, Linn.

SUBGENUS HERODIAS, BOIE.

American Egret.—*Ardea egretta*, Gmel.

SUBGENUS GARZETTA, KAUP.

Snowy Heron.—*Ardea candidissima*, Gmel.

SUBGENUS BUTORIDES, BLYTH.

s —Green Heron.—*Ardea virescens*, Linn.

GENUS NYCTICORAX, STEPHENS.

SUBGENUS NYCTICORAX.

Black-crowned Night Heron.—*Nycticorax nycticorax nævius*,
Bodd.

Order PALUDICOLÆ. Cranes, Rails, etc.

Suborder GRUES. Cranes.

FAMILY GRUIDÆ. CRANES.

GENUS GRUS, FALLAS.

Whooping Crane.—*Grus americana*, Linn.m Sandhill Crane.—*Grus mexicana*, Mull.

Suborder RALLI. Rails, Gallinules, Coots, etc.

FAMILY RALLIDÆ. RAILS, GALLINULES, COOTS, ETC.

SUBFAMILY RALLINÆ. RAILS.

GENUS RALLUS, LINNÆUS.

King Rail.—*Rallus elegans*, Aud.m s Virginia Rail.—*Rallus virginianus*, Linn.

GENUS PORZANA, VIEILLOT.

SUBGENUS PORZANA.

s Sora.—*Porzana carolina*, Linn,

SUBGENUS COTURNICOPS, BONAPARTE.

s Yellow Rail.—*Porzana noveboracensis*, Gmel.

SUBGENUS CRECISCUS, CABONIS.

Black Rail.—*Porzana jamaicensis*, Gmel.

SUBFAMILY GALLINULINÆ.

GENUS IONORNIS, REICHENBACH.

- m* Purple Gallinule.—*Ionornis martinica*, Linn.

GENUS GALLINULA, BRISSON.

- s* Florida Gallinule.—*Gallinula Galeata*, Licht.

SUBFAMILY FULICINÆ.

GENUS FULICA, LINNÆUS.

- s* American Coot.—*Fulica americana*, Gmel.

Order LIMICOLÆ. Shore Birds.

FAMILY PHALAROPODIDÆ.

GENUS CRYMOPHILUS, VIEILLOT.

- m* Red Phalarope—*Crymophilus fulicarius*, Linn.

GENUS PHALAROPUS, BRISSON.

SUBGENUS PHALAROPUS.

- Northern Phalarope.—*Phalaropus lobatus*, Linn.

SUBGENUS STEGANOPUS, VIEILLOT.

- Wilson's Phalarope.—*Phalaropus tricolor*, Vieillot.

FAMILY RECURVIROSTRIDÆ.

GENUS RECURVIROSTRA, LINNÆUS.

- American Avocet.—*Recurvirostra*, Gmel.

FAMILY SCOLOPACIDÆ. SNIPES, SANDPIPERS, ETC.

GENUS PHILOHELA, GRAY.

- American Woodcock.—*Philohela minor*, Gmel.

GENUS GALLINAGO, LEACH.

- m s* Wilson's Snipe.—*Gallinago delicata*, Ord.

GENUS MACRORHAMPHUS, LEACH.

- m* Dowitcher.—*Macrorhamphus*, Gmel.

GENUS MICROPALMA, BAIT

Stilt Sandpiper.—*Micropalma himantopus*, Bonap.

GENUS TRINGA, LINNAEUS.

SUBGENUS TRINGA.

m s Knot.—*Tringa canutus*, Linn.

SUBGENUS ARQUATELLA, BAIRD.

Purple Sandpiper.—*Tringa maritima*, Brunn.

SUBGENUS ACTODROMAS, KAUP.

- m s* Pectoral Sandpiper.—*Tringa maculata*, Vieill.
s White-rumped Sandpiper.—*Tringa fuscicollis*, Vieill.
s Baird's Sandpiper.—*Tringa Bairdii*, Coues.
s Least Sandpiper.—*Tringa minutilla*, Vieill.

SUBGENUS PELIDNA, CUVIER.

- m s* Red-backed Sandpiper.—*Tringa alpina pacifica*, Coues.
 Curlew Sandpiper.—*Tringa ferruginea*, Brunn.

GENUS EREUNETES, ILLIGER

- s* Semipalmated Sandpiper.—*Ereunetes pusillus*, Linn.

GENUS CALLIDRIS, CUVIER.

- m s* Sanderling.—*Calidris arenaria*, Linn.

GENUS LIMOSA, BRISSON.

Marbled Godwit.—*Limosa fedoa*, Linn.
 Hudsonian Godwit.—*Limosa haemastica*, Linn.

GENUS TOTANUS, BECHSTEIN.

SUBGENUS GIBBIS, KOCH.

- m s* Greater Yellow-legs.—*Totanus melanoleucus*, Gmel.
m s Yellow-legs.—*Totanus flavipes*, Gmel.

SUBGENUS RHYACOPHILUS, KAUP.

- s* Solitary Sandpiper.—*Totanus solitarius*, Wilson.

GENUS SYMPHEMIA, RAFINESQUE.

Willet.—*Symphemia semipalmata*, Gmel.

GENUS PAVONCELLA, LEACH.

Ruff.—*Pavoncella pugnax*, Linn.

GENUS BARTRAMIA, LESSON.

Bartramian Sandpiper.—*Bartramia longicauda*, Bechst.

GENUS TRYNGITES, CABANIS.

Buff-breasted Sandpiper.—*Tryngites subruficollis*, Vieillot.

GENUS ACTITIS, ILLIGER.

m s Spotted Sandpiper.—*Actitis macularia*, Linn.

GENUS NUMENIUS, BRISSON.

Long-billed Curlew.—*Numenius longirostris*, Wilson.

Hudsonian Curlew.—*Numenius hudsonicus*, Lath.

Eskimo Curlew.—*Numenius borealis*, Forst.

FAMILY CHARADRIIDÆ. PLOVERS.

GENUS CHARADRIUS, LINNÆUS.

SUBGENUS SQUATAROLA, CUVIER.

m s Black-bellied Plover.—*Charadrius squatarola*, Linn.

SUBGENUS CHARADRIUS, LINNÆUS.

m s American Golden Plover.—*Charadrius dominicus*, Mull.

GENUS ÆGIALITIS, BOIE.

SUBGENUS OXYECHUS, REICHENBACH.

m s Killdeer.—*Ægialitis vocifera*, Linn.

SUBGENUS ÆGIALITIS, BOIE.

s Semipalmated Plover.—*Ægialitis semipalmata*, Bonap.

m s Piping Plover.—*Ægialitis meloda*, Ord.

Snowy Plover.—*Ægialitis nivosa*, Cass.

FAMILY APHRIZIDÆ. SURF BIRDS AND TURNSTONES.

SUBFAMILY ARENARIINÆ. TURNSTONES.

GENUS ARENARIA, BRISSON.

m s Turnstone.—*Arenaria interpres*, Linn.

Order GALLINÆ. Gallinaceous Birds.

Suborder PHASIANA. Pheasants, Grouse, Quails,
Partridges, Etc.

FAMILY TETRAONIDÆ. GROUSE. PARTRIDGES, ETC.

SUBFAMILY PERDICINÆ. PARTRIDGES.

GENUS COLINUS, LESSON.

- s Bob-white.—*Colinus virginianus*, Linn.

SUBFAMILY TETRAONINÆ. GROUSE.

GENUS DENDRAGAPUS, ELLIOT.

SUBGENUS DENDRAGAPUS.

- Richardson's Grouse.—*Dendragapus obscurus richardsonii*,
Sab.

SUBGENUS CANACHITES. STEJNEGER.

- Canada Grouse.—*Dendragapus canadensis*, Linn.

GENUS BONASA, STEPHENS.

- s Ruffed Grouse.—*Bonasa umbellus*, Linn.

GENUS LAGOPUS, BRISSON.

- m Willow Ptarmigan.—*Lagopus lagopus*, Linn.
Rock Ptarmigan.—*Lagopus rupestris*, Gmel.

GENUS TYMPANUCHUS, GLOGER.

- m Prairie Hen.—*Tympanuchus americanus*, Reich.

GENUS PEDIOCÆTES, BAIRD.

- Sharp-tailed Grouse.—*Pediocætes phasianellus*, Linn.

FAMILY PHASIANIDÆ. PHEASANTS, ETC.

SUBFAMILY MELEAGRINÆ. TURKEYS.

GENUS MELEAGRIS, LINNÆUS.

- Wild Turkey.—*Meleagris gallopavo*, Linn.

Order COLUMBÆ. Pigeons.

FAMILY COLUMBIDÆ. PIGEONS.

GENUS ECTOPISTES, SWAINSON.

m Passenger Pigeon.—*Ectopistes migratorius*, Linn.

GENUS ZENAIDURA, BONAPARTE.

m s Mourning Dove.—*Zenaidura macroura*, Linn.

Order: RAPTORES. Birds of Prey.

Suborder SARCORHAMPHI. American Vultures.

FAMILY CATHARTIDÆ. AMERICAN VULTURES.

GENUS CATHARTES, ILLIGER.

Turkey Vultures.—*Cathartes Aura*, Linn.

Suborder FALCONES. Vultures, Falcons, Hawks,
Buzzards, Eagles, Kites, Harriers, etc.FAMILY FALCONIDÆ. VULTURES, FALCONS, HAWKS,
EAGLES, ETC.

SUBFAMILY ACCIPITRINÆ. Kites, Buzzards, Hawks, Goshawks, Eagles, etc.

GENUS ELANOIDES, VIEILLOT.

m Swallow-tailed Kite.—*Elanoides forficatus*, Linn.

GENUS CIRCUS, LACEPEDE.

m s Marsh Hawk.—*Circus hudsonius*, Linn.

GENUS ACCIPITER, BRISSON.

SUBGENUS ACCIPITER.

m s Sharp-shinned Hawk.—*Accipiter velox*, Wilson.
Cooper's Hawk.—*Accipiter cooperi*, Bonap.

SUBGENUS ASTUR, LACEPEDE.

m American Goshawk.—*Accipiter atricapillus*, Wilson.

GENUS BUTEO, CUVIER.

- m s* Red-tailed Hawk.—*Buteo borealis*, Gmel.
 Western Red-tail.—*Buteo borealis calurus*, Cass.
m s Red-shouldered Hawk.—*Buteo lineatus*, Gmel.
 Swainson's Hawk.—*Buteo swainsoni*, Bonap.
m s Broad-winged Hawk.—*Buteo latissimus*, Wilson.

GENUS ARCHIBUTEO, Brehm.

- m s* American Rough-legged Hawk (Black Hawk).—*Archibuteo lagopus sancti-johannis*, Gmel.

GENUS AQUILA, BRISSON.

- Golden Eagle.—*Aquila chrysaetos*, Linn.

GENUS HALLIÆTUS, SAVIGNY.

- m* Bald Eagle.—*Haliaëtus leucocephalus*, Linn.

SUBFAMILY FALCONINÆ. FALCONS.

GENUS FALCO, LINNÆUS.

SUBGENUS HIEROFALCO, CUVIER.

- White Gyrfalcon.—*Falco islandus*, Brunn.

SUBGENUS RHYNCHODON, NITZSCH.

- m s* Duck Hawk.—*Falco peregrinus anatum*, Bonap.

SUBGENUS ÆSALON, KAUP.

- m s* Pigeon Hawk.—*Falco columbarius*, Linn.

SUBGENUS TINNUNCULUS, VIEILLOT.

- m s* American Sparrow Hawk.—*Falco sparverius*, Linn.

GENUS POLYBORUS, VIEILLOT.

- m* Audubon's Caracara.—*Polyborus cheriway*, Jacq.

SUBFAMILY PANDIONINÆ. OSPREYS.

GENUS PANDIAN, Savigny.

- m* American Osprey.—*Pandion haliaëtus carolinensis*, Gmel.

Suborder STRIGES. Owls.

FAMILY STRIGIDÆ. BARN OWLS.

GENUS STRIX, LINNÆUS.

American Barn Owl.—*Strix pratineola*, Bonap.

FAMILY BUBONIDÆ, HORNED OWLS, ETC.

GENUS ASIO, BRISSON.

m s American Long eared Owl.—*Asio wilsonianus*, Lesson.

s Short-eared Owl.—*Asio accipitrinus*, Pall.

GENUS SYRNIUM, SAVIGNY.

m s Barred Owl.—*Syrnium nebulosum*, Forst.

GENUS ULULA, CUVIER.

Great Gray Owl.—*Ulula citerea*, Gmel.

GENUS NYCTALA, REHM.

Richardson's Owl.—*Nyctala tengmalini richardsoni*, Bonap.

Saw-whet Owl.—*Nyctala acadica*, Gmel.

GENUS MEGASCOPS, KAUP.

m s Screech Owl.—*Megascops asio*, Linn.

GENUS BUBO, CUVIER.

m s Great Horned Owl.—*Bubo virginianus*, Gmel.

GENUS NYCTEA, STEPHENS.

m Snowy Owl.—*Nyctea nyctea*, Linn.

GENUS SURNIA, DUMERIL.

American Hawk Owl.—*Surnia ulula caparoch*, Mull.

Order COCCYGES. Cuckoos, etc.

Suborder CUCULI. Cuckoos, etc.

FAMILY CUCULIDÆ. CUCKOOS, ANIS, ETC.

SUBFAMILY COCCYGINÆ. AMERICAN CUCKOOS.

GENUS COCCYZUS, Vieillot.

m s Yellow-billed Cuckoo.—*Coccyzus americanus*, Linn.

s Black-billed Cuckoo.—*Coccyzus erythrophthalmus*, Wilson.

Suborder ALCYONES. Kingfishers.

FAMILY ALCEDINIDÆ. KINGFISHERS.

GENUS CERYLE, BOIE.

SUBGENUS STREPTOCERYLE. ONAPARTE.

m s Belted Kingfisher.—*Ceryle alcyon*, Linn.

Order PICI. Woodpeckers, Wrynecks, etc.

FAMILY PICIDÆ. Woodpeckers.

GENUS DRYOBATES, BOIE.

s Hairy Woodpecker.—*Dryobates villosus*, Linn.

s Downey Woodpecker.—*Dryobates pubescens*, Linn.

GENUS PICOIDES, LACEPEDE.

s Arctic Three-toed Woodpecker.—*Picoides arcticus*, Swains.
American Three-toed Woodpecker.—*Picoides americanus*,
Brehm.

GENUS SPHYRAPICUS, BAIRD.

m s Yellow-billed Sapsucker.—*Sphyrapicus varius*, Linn.

GENUS CEOPHLÆUS, CAHANIS.

m s Pileated Woodpecker.—*Ceophlœus pileatus*, Linn.

GENUS MELANERPES, SWAINSON.

SUBGENUS MELANERPES.

m s Red-headed Woodpecker.—*Melanerpes erythrocephalus*,
Linn.

SUBGENUS CENTURUS, SWAINSON.

Red-bellied Woodpecker.—*Melanerpes carolinus*, Linn.

GENUS COLAPTES, SWAINSON.

m s Flicker.—*Colaptes auratus*, Linn.

 Order MACROCHIRES. Goatsuckers, Swifts, etc.

Suborder CAPRIMULGI. Goatsuckers, etc.

FAMILY CAPRIMULGIDÆ. GOATSUCKERS, ETC.

GENUS ANTROSTOMUS, GOULD.

m s Whip-poor-will.—*Antrostomus vociferus*, Wils.

GENUS CHORDEILES, SWAINSON.

s Nighthawk.—*Chordeiles virginianus*, Gmel.

Suborder CYPSELI. SWIFTS.

FAMILY MICROPODIDÆ. SWIFTS.

SUBFAMILY CHÆTURINÆ. SPINE-TAILED SWIFTS.

GENUS CHÆTURA, STEPHENS.

s Chimney Swift.—*Chætura pelagica*, Linn.

Suborder TROCHILI. Hummingbirds.

FAMILY TROCHILIDÆ. HUMMINGBIRDS.

GENUS TROCHILUS, LINNÆUS.

SUBGENUS TROCHILUS.

s Ruby-throated Hummingbird.—*Trochilus colubris*, Linn.

Order PASSERES. Perching Birds.

Suborder CLAMATORES. Songless Perching Birds.

FAMILY TYRANNIDÆ. TYRANT FLYCATCHERS.

GENUS MILVULUS, SWAINSON.

m s Scissor-tailed Flycatcher.—*Milvulus forficatus*, Gmel.

GENUS TYRANNUS, CUVIER.

m s Kingbird.—*Tyrannus tyrannus*, Linn.

GENUS MYIARCHUS, CABANIS.

m s Crested Flycatcher.—*Myiarchus crinitus*, Linn.

GENUS SAYORNIS, BONAPARTE.

- * Phoebe.—*Sayornis phoebe*, Lath.

GENUS CONTOPUS, CABANIS.

- * Olive-sided Flycatcher.—*Contopus borealis*, Swains.
* Wood Pewee.—*Contopus virens*, Linn.

GENUS EMPIDONAX, CABANIS.

- * Yellow-bellied Flycatcher.—*Empidonax flaviventris*, Baird.
* Acadian Flycatcher.—*Empidonax acadicus*, Gmel.
* Traill's Flycatcher.—*Empidonax pusillus traillii*, Aud.
* Least Flycatcher.—*Empidonax minimus*, Baird.

Suborder OSCINES. Song Birds.

FAMILY ALAUDIDÆ. LARKS.

GENUS OTOCORIS, BONAPARTE.

- * Horned Lark.—*Otocoris alpestris*, Linn.
* Prairie Horned Lark.—*Otocoris alpestris praticola*, Hensh.

FAMILY CORVIDÆ. CROWS, JAYS, MAGPIES, ETC.

SUBFAMILY GARRULINÆ. MAGPIES AND JAYS.

GENUS PICA, BRISSON.

- American Magpie.—*Pica pica hudsonica*, Sab.

GENUS CYANOCITTA, STRICKLAND.

- m s* Blue Jay.—*Cyanocitta cristata*, Linn.
m s Canada Jay.—*Perisoreus Canadensis*, Linn.

SUBFAMILY CORVINÆ. CROWS.

GENUS CORVUS, LINNÆUS.

- m s* American Raven.—*Corvus corax sinuatus*, Wagl.
m s American Crow.—*Corvus americanus*, Audbon.

FAMILY ICTERIDÆ. BLACKBIRDS, ORIOLES, ETC.

GENUS DOLICHONYX, SWAINSON.

- m s* Bobolink.—*Dolichonyx oryzivorus*, Linn.

GENUS MOLOTHRUS, SWAINSON.

Cowbird.—*Molothrus ater*, Bodd.

GENUS XANTHOCEPHALUS, BONAPARTE.

m Yellow-headed Blackbird.—*Xanthocephalus xanthocephalus*, Bonap.

GENUS AGELAIUS, VIEILLOT.

m s Red-winged Blackbird.—*Agelaius phoeniceus*, Linn.

GENUS STURNELLA, VIEILLOT,

s Meadowlark.—*Sturnella magna*, Linn.

GENUS ICTERUS, BRISSON.

Orchard Oriole.—*Icterus spurius*, Linn.

SUBGENUS YPHANTES, VIEILLOT.

m s Baltimore Oriole.—*Icterus galbula*, Linn.

GENUS SCOLECOPHAGUS, SWAINSON.

s Rusty Blackbird.—*Scolecophagus carolinus*, Mull.

GENUS QUISCALUS, VIEILLOT.

SUBGENUS QUISCALUS.

m s Bronzed Grackle.—*Quiscalus quiscula æneus*, Ridgw.

FAMILY FRINGILLIDÆ. FINCHES, SPARROWS, ETC.

GENUS COCCOTHAUSTES, BRISSON.

SUBGENUS HESPERIPHONA, BONAPARTE.

m Evening Grosbeak.—*Coccothraustes vespertina*, Coop.

GENUS PINICOLA, VIEILLOT.

m Pine Grosbeak.—*Pinicola enucleator*, Linn.

GENUS CARPODACUS, KAUP.

s Purple Finch.—*Carpodacus purpureus*, Gmel.

GENUS LOXIA, LINNÆUS.

s American Crossbill.—*Loxia curvirostra minor*, Brehm.
White-winged Crossbill.—*Loxia leucoptera*, Gmel.

GENUS ACANTHIS, BECHSTEIN.

Greenland Redpoll.—*Acanthis hornemannii*.Hoary Redpoll.—*Acanthis hornemannii exilipes*, Coues.s Redpoll.—*Acanthis linaria*, Linn.Holbœll's Redpoll.—*Acanthis linaria holbœllii*, Brehm.

GENUS SPINUS, KOCH.

m s American Goldfinch.—*Spinus tristis*, Linn.

GENUS PASSER, BRISSON.

s House Sparrow.—*Passer domesticus*, Linn.s Pine Siskin.—*Spinus pinus*, Wils.

GENUS PLECTROPHENAX, STEJNEGER.

m s Snowflake.—*Plectrophenax nivalis*, Linn.

GENUS CALCARIUS, BECHSTEIN.

s Lapland Longspur.—*Calcarius lapponicus*, Linn.

GENUS POOCAETES, BAIRD.

s Vesper Sparrow.—*Pooœetes gramineus*, Gmel.

GENUS AMMODRAMUS, SWAINSON.

SUBGENUS PASSERCULUS, BONAPARTE.

s Savanna Sparrow.—*Ammodramus sandwichensis savanna*,
Wils.

s Nelson's Sharp-tailed Sparrow.

SUBGENUS COTURNICULUS, BONAPARTE.

Grasshopper Sparrow.—*Ammodramus savannarum passeri-*
nus, Wils.

GENUS CHONDESTES, SWAINSON.

Lark Sparrow.—*Chondestes grammacus*, Say.

GENUS ZONOTRICHIA, SWAINSON.

m s White-crowned Sparrow.—*Zonotrichia leucophrys*, Forst.m s White-throated Sparrow.—*Zonotrichia albicollis*, Gmel.

GENUS SPIZELLA, BONAPARTE.

s Tree Sparrow.—*Spizella monticola*, Gmel.s Chipping Sparrow.—*Spizella socialis*, Wils.s Field Sparrow.—*Spizella pusilla*, Wils.

GENUS JUNCO, WAGLER.

m s Slate-colored Junco.—*Junco hyemalis*, Linn.

GENUS MELOSPIZA, BAIRD.

- s* Song Sparrow.—*Melospiza fasciata*, Gmel.
s Lincoln's Sparrow.—*Melospiza lincolni*, Aud.
s Swamp Sparrow.—*Passerella georgiana*, Lath.

GENUS PASSERELLA, SWAINSON.

m s Fox Sparrow.—*Passerella iliaca*, Merr.

GENUS PIPILO, VIEILLOT.

m s Towhee.—*Pipilo erythrophthalmus*, Linn.

GENUS CARDINALIS, BONAPARTE.

m Cardinal.—*Cardinalis cardinalis*, Linn.

GENUS HABIA, REICHENBACH.

m s Rose-breasted Grosbeak.—*Habia ludoviciana*, Linn.

GENUS PASSARINA, VIEILLOT.

m s Indigo Bunting.—*Passerina cyanea*, Linn.

GENUS SPIZA, Bonaparte.

Dickeissel.—*Spiza americana*, Gmel.

FAMILY TANAGRIDÆ. TANAGERS.

GENUS PIRANGA, Vieillot.

- m s* Scarlet Tanager.—*Piranga erythromelas*, Vieillot.
 Summer Tanager.—*Piranga rubra*, Linn.

FAMILY HIRUNDINIDÆ. SWALLOWS.

GENUS PROGNE, BOIE.

- s* Purple Martin.—*Progne subis*, Linn.

GENUS PETROCHELIDON, Cabanis.

- s* Cliff Swallow.—*Petrochelidon lunifrons*, Say.

GENUS CHELIDON, Forster.

- s* Barn Swallow.—*Chelidon erythrogaster*, Bodd.
s White-breasted Swallow.

GENUS TACHYGINETA, Cabanis.

Tree Swallow.—*Tachycineta bicolor*, Vieillot.

GENUS CLIVICOLA, Forster.

s Bank Swallow.—*Clivicola riparia*, Linn.

GENUS STELGIDOPTERYX, BAIRD.

Rough-winged Swallow.—*Stelgidopteryx serripennis*, Aud.

FAMILY AMEPLIDÆ. WAXWINGS, ETC.

SUBFAMILY AMPELINÆ. WAXWINGS.

GENUS AMPELIS, LINNÆUS.

m Bohemian Waxwing.—*Ampelis garrulus*, Linn.*m s* Cedar Waxwing.—*Ampelis cedrorum*, Vieillot.

FAMILY LANIIDÆ. SHRIKES.

GENUS LANIUS, LINNÆUS.

m s Northern Shrike.—*Lanius borealis*, Vieillot.*s* Loggerhead Shrike.—*Lanius ludovicianus*, Linn.White-rumped Shrike.—*Lanius ludovicianus excubitorides*, Swainson.

FAMILY VIREONIDÆ. VIREOS.

GENUS VIREO, VIEILLOT.

SUBGENUS VIREOSYLVA, Bonaparte.

s Red-eyed Vireo.—*Vireo olivaceus*, Linn.*s* Philadelphia Vireo.—*Vireo philadelphicus*, Cass.*s* Warbling Vireo.—*Vireo gilvus*, Vieillot.

SUBGENUS LANIVIREO, BAIRD.

s Yellow-throated Vireo.—*Vireo flavifrons*, Vieillot.*s* Blue-headed Vireo.—*Vireo solitarius*, Wilson.

FAMILY MNIOTILTIDÆ. WOOD-WARBLER.

GENUS MNIOTILTA, VIEILLOT.

m s Black and White Warbler.—*Mniotilta varia*, Linn.

GENUS PROTONOTARIA, BAIRD.

Prothonotary Warbler.—*Protonotaria citrea*, Budd.

GENUS HELMINTHOPHILA, RIDGWAY.

- Golden-winged Warbler.—*Helminthophila chrysoptera*, Linn
 * Nashville Warbler.—*Helminthophila ruficapilla*, Wils.
 * Orange-crowned Warbler.—*Helminthophila celata*, Say
 * Tennessee Warbler.—*Helminthophila peregrina*, Wils.

GENUS COMPSOTHTYPIS, CABANIS.

- m s* Parula Warbler.—*Compsothlypis americana*, Linn.

GENUS DENDROICA, GRAY.

SUBGENUS PERISSOGLOSSA, BAIRD.

- * Cape May Warbler.—*Dendroica tigrina*, Gmel.

SUBGENUS DENDROICA, GRAY.

- m s* Yellow Warbler.—*Dendroica aestiva*, Gmel.
m s Black-throated Blue Warbler.—*Dendroica caerulescens*, Gmel.
m s Myrtle Warbler.—*Dendroica coronata*, Linn.
m s Magnolia Warbler.—*Dendroica maculosa*, Gmel.
 Cerulean Warbler.—*Dendroica caerulea*, Wilson.
m s Chestnut-sided Warbler.—*Dendroica pensylvanica*, Linn.
m s Bay-breasted Warbler.—*Dendroica castenea*, Wilson.
 * Black-poll Warbler.—*Dendroica striata*, Forst.
m s Blackburnian Warbler.—*Dendroica blackburniæ*, Gmel.
 * Black-throated Green Warbler.—*Dendroica virens*, Gmel.
 Pine Warbler.—*Dendroica vigorsii*, Aud.
 * Palm Warbler.—*Dendroica palmarum*, Gmel.
 Yellow Palm Warbler.—*Dendroica palmarum hypochrysea*,
 Ridgw.

GENUS SEIURUS, SWAINSON.

- * Oven Bird.—*Seiurus aurocapillus*, Linn.
 * Water-thrush.—*Seiurus noveboracensis*, Gmel.
 * Louisiana Water-thrush.—*Seiurus motacilla*, Vieill.

GENUS GEOTHTYPIS, CABANIS

SUBGENUS OPORORNIS, BAIRD.

- Connecticut Warbler.—*Geothlypis agilis*, Wilson.
 * Mourning Warbler.—*Geothlypis philadelphia*, Wilson.
m s Maryland Yellow-throat.—*Geothlypis trichas*, Linn.

GENUS ICTERIA, VIEILLOT.

- Yellow-breasted Chat.—*Icteria virens*, Linn.

GENUS SYLVANIA, NUTTALL.

- Hooded Warbler.—*Sylvania mitrata*, Gmel.
m s Wilson's Warbler.—*Sylvania pusilla*, Wilson.
s Canadian Warbler.—*Sylvania canadensis*, Linn.

GENUS SETOPHAGA, SWAINSON.

- s* American Redstart.—*Setophaga ruticilla*, Linn.

FAMILY MOTACILLIDÆ. WAGTAILS.

GENUS ANTHUS, BECHSTEIN.

SUBGENUS ANTHUS

- s* American Pipit.—*Anthus pennsylvanicus*, Lath.

FAMILY TROGLODYTIDÆ. WRENS, THRASHERS, ETC.

SUBFAMILY MIMINÆ. THRASHERS.

GENUS MIMUS, BOIE.

- Mockingbird.—*Mimus polyglottos*, Linn.

GENUS GALEOSCOPTES, CABANIS.

- m s* Catbird.—*Galeoscoptes carolinensis*, Linn.

GENUS HARPORHYNCHUS, CABANIS.

SUBGENUS METHRIOPTERUS, REICHENBACH.

- m s* Brown Thrasher.—*Harporynchus rufus*, Linn.

GENUS THRYOTHORUS, VIEILLOT.

SUBGENUS THRYOTHORUS.

- Carolina Wren.—*Thryothorus ludovicianus*, Lath.
 House Wren.—*Troglodytes aedon*, Vieill.

SUBGENUS ANORTHURA, RENNIE.

- s* Winter Wren.—*Troglodytes hiemalis*, Vieill.

GENUS CISTOTHORUS, CABANIS.

SUBGENUS CISTOTHORUS.

- Short-billed Marsh Wren.—*Cistothorus stellaris*, Licht.

SUBGENUS TELMATODYTES, CABANIS.

- m s* Long-billed Marsh Wren.—*Cistothorus palustris*, Wils.

FAMILY CERTHIDÆ. CREEPERS.

GENUS CERTHIA, LINNÆUS.

- 8 Brown Creeper.—*Certhia familiaris americana*, Bonap.

FAMILY PARIDÆ. NUTHATCHES AND TITS.

SUBFAMILY SITTINÆ. NUTHATCHES.

GENUS SITTA, LINNÆUS.

- 8 White-breasted Nuthatch.—*Sitta carolinensis*, Lath.
8 Red-breasted Nuthatch.—*Sitta canadensis*, Linn.

SUBFAMILY PARIDÆ. TITMICE.

GENUS PARUS, LINNÆUS.

SUBGENUS PARUS, LINNÆUS.

- 8 Chickadee.—*Parus atricapillus*, Linn.
Hudsonian Chickadee.—*Parus hudsonicus*, Forst.

FAMILY SYLVIIDÆ. WARBLERS, KINGLETS, GNATCATCHERS.

SUBFAMILY RUGLINÆ. KINGLETS.

GENUS REGULUS, CUVIER.

- 8 Golden-crowned Kinglet.—*Regulus satrapa*, Licht.
8 Ruby-crowned Kinglet.—*Regulus calendula*, Linn.

SUBFAMILY POLIOPTILINÆ. GNATCATCHERS.

GENUS POLIOPTILA, SCLATER.

- 8 Blue-gray Gnatcatcher.—*Polioptila cærulea*, Linn.

FAMILY TURDIDÆ. THRUSHES, SOLITAIREIS, STONECHATS,
BLUEBIRDS, ETC.

SUBFAMILY TURDINÆ. THRUSHES.

GENUS TURDUS, LINNÆUS.

SUBGENUS HYLOCICHLA, BAIRD.

- 8 Wood Thrush.—*Turdus mustelinus*, Gmel.
m 8 Wilson's Thrush.—*Turdus fuscescens*, Steph.
8 Gray-cheeked Thrush.—*Turdus aliciae*, Baird.
8 Olive-backed Thrush.—*Turdus ustulatus* *ainsonii*, Cab.
8 Hermit Thrush.—*Turdus aonalaschkæ pallasii*, Cab.

GENUS MERULA, LEACH.

- s American Robin.—*Merula migratoria*, Linn.

GENUS SIALIA, SWAINSON.

- s Bluebird.—*Sialia sialis*, Linn.
Black-capped Petrel.—*Estrelata hasitata*, Kuhl.



