

3 1761 04277 3762

PROVINCE

DE



ST. BONIFACE BOARD  
OF TRADE

THE FOLLOWING INDUSTRIES  
ARE NOW LOCATED IN

# St. Boniface

## MANITOBA

Manitoba Iron Rolling Mills.

Manitoba Linseed Oil Mill.

Martin-Senour Paint Co.

Rice Malting Company.

Western Cut Stone Works.

Western Canada Flour Mills.

The largest in the British Empire.

Union Stock Markets Co., Ltd.

All railways have access to these Stock-  
yards. Will be chief cattle depot in  
Canada when completed.

Stanley Mineral Springs and Brewing Co.

Capitalized at \$1,000,000.

Consumers' Artificial Ice Co.

Capitalized at \$500,000.

Winnipeg Ceiling and Roofing Co.

Capitalized at \$250,000.

Winnipeg Steel Granary and Culvert Co.

Winnipeg Paint and Glass Co.

---

**There is Room for More—Come**

See pages 38, 42, and outside back cover.

Pamp  
HC.  
O.

Rampson  
J.C.  
O.

# Opportunities in Manitoba

1913



Provincial Booklet Series

Containing Extracts from  
Heaton's Annual

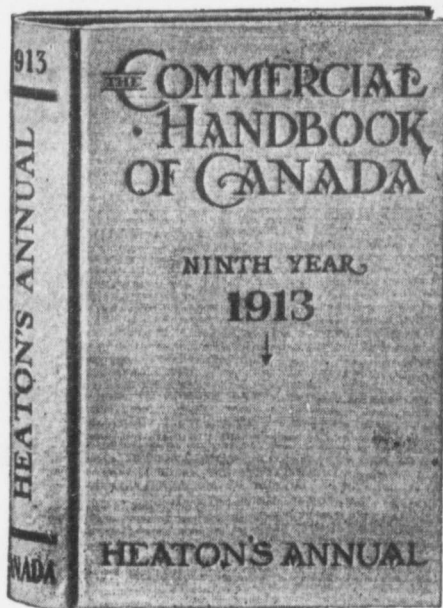


Heaton's Agency, Toronto

Copyright by Ernest Heaton

Toronto, 1913

**This Booklet contains Extracts from**



**Heaton's Annual contains similar information relating to all provinces in Canada.**

**Canadian Edition—One Dollar  
English Edition—Five Shillings**

**For Sale by all leading booksellers in Canada,  
Great Britain and the United States, or by**

**Heaton's Agency, Toronto, Canada**

**To secure Special Attention mention Heaton's Annual  
when writing to Local References**

# Opportunities in Manitoba

---

## General Information

**AGRICULTURAL COLLEGE.** The Manitoba Agricultural College at Winnipeg was first opened in 1906. The College confers the degree of Bachelor of Science in Agriculture on those who have successfully pursued the five winters' course in Agriculture. The cost per year is \$120, as follows: Registration fee \$10, laboratory fees \$3.50, dairy and shop suits \$3, books \$10, laundry \$5 to \$10 and board and room in the dormitories at \$4 per week for 20 weeks. The cost of the 5 months' course for women in Home Economics is \$99.50.

**AGRICULTURAL TRAINS.** In connection with the Manitoba Agricultural College the province has established a system of agricultural trains equipped with a special staff of instructors and lecturers, which are run over practically every line in the province.

**AREA.** Total area of Manitoba to-day is 251,832 sq. miles. In 1912 the province was extended northwest to the 60th parallel and eastward to a line drawn from the northeast angle to the original boundaries of the province to the most northeasterly portion of Island Lake, thence northeast to intersect the southern shores of Hudson Bay in longitude 89 degrees. This district is 178,000 sq. miles, *i.e.*, over 4,000 sq. miles larger than the old province of Manitoba.

**AREA CULTIVABLE.** The province, exclusive of the northern area added in 1912, has over 30 million acres of land that can be cultivated to advantage, about 5 million of which is under cultivation. Total acreage under grain was 5,821,864 acres and total grain crop 160,232,487 bushels in 1911. In 1912 total acreage was 6,235,557 acres (see Grain Crops, page 12).

**CLIMATE.** Climate conditions are uniform throughout the province. There is much sunshine. Summers are warm. Winter starts suddenly in November or December. The cold is steady, with a clear, dry atmosphere.

Snow on the prairie averages 1 ft. deep. Chief rainfall is in June. According to the table compiled for Heaton's Annual by the Meteorological Office at Toronto, the mean annual temperature at different points is as follows: Brandon, 33.9; Channel Island, 30.9; Elkhorn, 33.7; Emerson, 35.9; Hillview, 32.7; Minnedosa, 34.1; Portage la Prairie, 35.2; Russell, 31.3; Sourisford, 33.8; St. Albans, 34.8; Stony Mountain, 33.8; Treherne, 34.9; Winnipeg, 34.9. See under "Rainfall" below.

**COST OF LIVING.** The following are retail prices at Winnipeg in March, 1912, as given in the Dominion Labour Gazette: Bacon 25c., beef 14c., bread 5c., butter up to 45c., cheese 20c., coal per ton (2,000 lbs.) \$7.00, coal oil 30c., coffee 40c., eggs (per dozen) 35c., fish, fresh, 15c.-18c., flour 4c., lard 20c., milk (per quart) 12c., mutton, 22c.-25c., pork (salt) 20c., potatoes (per bushel) 75c., rice 5c., sugar 6½c., starch 10c., tea 40c., vinegar 15c., wood (per cord) \$8.50, rent varies greatly. Average rent of a house in Winnipeg of 4 to 6 rooms is \$12.00 to \$25.00.

**DOMINION HOMESTEADS—HOW TO MAKE SELECTION.** Homesteads in the Prairie Provinces are being rapidly taken up. It is, therefore, practically impossible to make a selection by correspondence. First visit in person the office of J. Bruce Walker, Commissioner of Immigration, near the C.P.R. Station at Winnipeg. Here maps can be consulted and definite information obtained of Dominion Lands unallotted to date, the character of the soil, and a description of any district. Choose a locality and make alternative selections of homesteads, then apply to the Dominion Lands Agent in that locality.

**DOMINION HOMESTEAD REGULATIONS.** The land is surveyed into townships 6 miles square, divided into 36 sections of 640 acres each. Sections 11 and 29 are reserved for school purposes; sections 8 and 26 belong to the Hudson's Bay. Other sections are available for homesteading. Any person who is sole head of a family, or any male over 18 years old, who is a British subject, or declares his intention to become a British subject, or a widow with minor children of her own dependent on her for support, may, on paying \$10, obtain entry for a quarter section (160 acres more or less) of Dominion Lands in Manitoba. Applicant must appear in person at the Dominion Lands Agency or sub-agency for the district. Entry by proxy may be made at any agency for a father, mother, son, daughter, brother or sister, if eligible, and when duly authorized by the prescribed form. Duties:

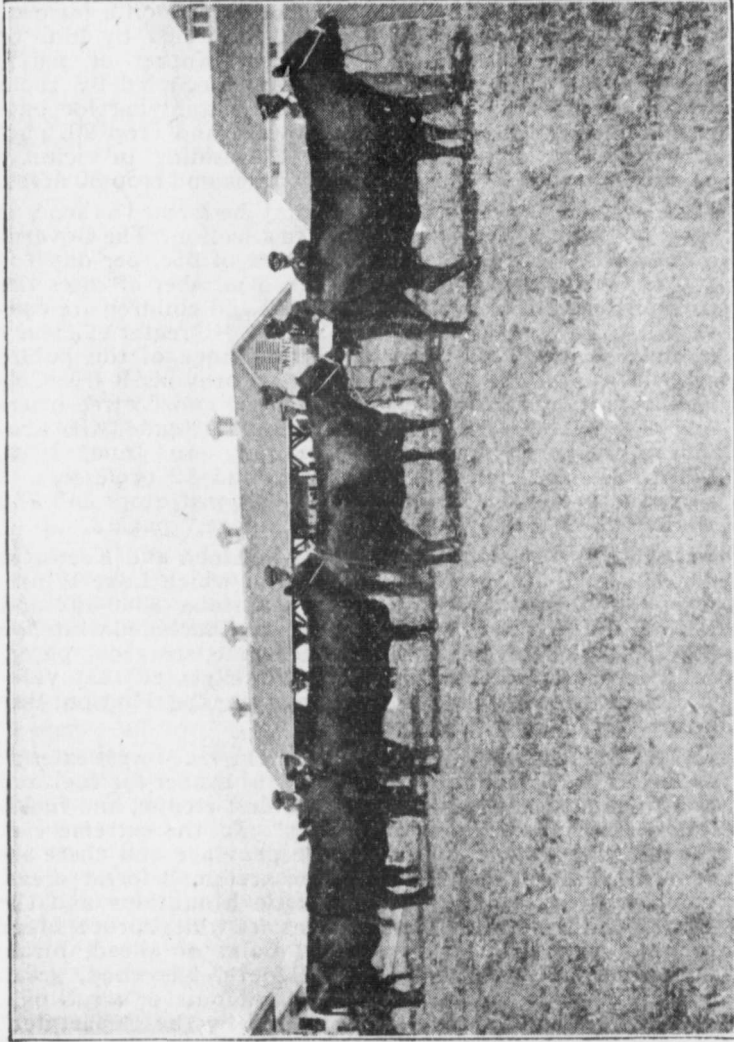
erection of a habitable house, 6 months' residence and cultivation of land in each of 3 years. A homesteader may live within 9 miles of his homestead on a farm of at least 80 acres solely owned and occupied by him or by his father, mother, son, daughter, brother or sister, or upon a homestead entered for and occupied by them within the prescribed distance. Before applying for patent, homesteader must break 30 acres and crop 20, part of work being done each year. If residing in vicinity, as stated above, he must break 50 acres and crop 30 acres.

**EDUCATION.** A School District may be formed as soon as there are ten children of school age in a section. The Government grants to public schools consist of 65c. per day for 200 days' operation each year. In a number of cases the rural districts have been consolidated and children are conveyed to the schools from their homes. Greater efficiency is thus secured. In 1911 the attendance of the public schools was 80,848. There are in the province 8 free Collegiate Institutes, 16 free High Schools and 53 free intermediate schools. In 1911 126 teachers attended the Provincial Normal School at Winnipeg. In June, 1912, Manitoba University at Winnipeg had 12 professors, 2 assistant professors, 9 lecturers, 3 demonstrators and 746 students. See also "Agricultural College," page 3.

**FISHERIES.** The total value of Manitoba and Keewatin fisheries in 1910-11 was \$1,302,779, of which Lake Winnipeg contributed \$537,071, Lake Manitoba \$360,302 and Lake Winnipegosis \$186,724. The catch included whitefish \$326,347, pickerel \$378,396, besides pike, sturgeon, perch, tullibee, catfish, goldeyes, etc. It is expected that valuable sea fisheries will be developed in the Hudson Bay lately acquired by the province.

**FORESTS.** In Northwest Manitoba the true forest extends as far as Duck Mountains. There is timber for fuel and building on the Eastern slope of the first steppe, and fuel is found skirting the rivers and lakes. In the extreme east the forest extends 80 miles into the province and there are some sawmills. In the west there are small forest areas. Timbered areas exist on the Turtle Mountains and the Brandon Hills. The principal trees are white spruce, black spruce, aspen (or white poplar), balm of gilead, birch, jack pine and tamarac, also sparingly, basswood, green ash, Manitoba maple, white elm and burr or scrub oak. The Dominion lands are administered by the Department of the Interior. Area of Dominion forest reserves, 357 square miles.

GENERAL INFORMATION



Manitoba Prize Cattle. See page 11

FR  
in  
A  
W  
of  
W  
B  
E  
L  
B  
1  
M  
2  
A  
C  
o  
GR  
4  
HU  
o  
B  
t  
V  
t  
C  
w  
f  
I  
f  
2  
P  
I  
C  
IM  
S  
V  
I  
a  
r  
4  
a



## GENERAL INFORMATION

**FREIGHT RATES.** The following table shows difference in 1912 between freight rates per 100 lbs. on wheat to Port Arthur from points in Manitoba and from points in the Western Provinces, with equivalent per acre on a crop of 20 bushels:

Winnipeg, Man.—10c.....	\$1.20 per acre
Boissevain, Man.—13c.....	1.56 per acre
Brandon, Man.—13c.....	1.56 per acre
Edmonton, Alta.—25c.....	3.00 per acre
Lethbridge, Alta.—23c.....	2.76 per acre
Battleford, Sask.—24c.....	2.96 per acre

The following figures show difference in freight rates per 100 lbs. on live stock between Western Provinces and Manitoba to Winnipeg Market:

Edmonton, Alta., 40c., Virden, Man., 19c., difference 21c. on an animal of 1,400 weight, \$2.94; Lethbridge, Alta., 43c., Deloraine, Man., 20c., difference \$3.22; Calgary, Alta., 45c., Melita, Man., 19c., difference 26c., or \$3.64.

**GRAIN CROP.** In 1912, 50,000 farmers garnered 182,357, - 494 bushels. For particulars see under "Agriculture."

**HUDSON BAY ROUTE.** From various expert opinions, optimistic and the reverse, it may be concluded that the Route is open for navigation from about the 15th July to about 15th Oct. The C.N.R. have built a line from Winnipeg to The Pas on the Saskatchewan River. From there the Dominion Government will build a line to Fort Churchill, 465 miles, or Port Nelson, 397 miles. This route will affect an average saving of 970 miles on the distance from the Western wheat fields to the Atlantic seaboard. Distance to Liverpool from Fort Churchill is 2,926 miles; from Montreal, via Belle Isle, 2,761, and via Cape Race, 2,927 miles; from New York, 3,079 miles. Write for pamphlet "Hudson Bay Route" to the Dept. of the Interior, Ottawa. See report Dept. of Railways and Canals, 1909.

### IMPORTATIONS OF AGRICULTURAL PRODUCE.

Statement showing value of importations from the United States into Manitoba as shown by Customs Returns at Winnipeg, for the fiscal year ending March 31st, 1912: Bacon and hams, shoulders and sides, \$573,569; vegetables and baked beans in cans and other air-tight packages, n.o.p., \$114,870; eggs, \$314,141; other meats, fresh, \$68,661; tomatoes and cooked corn in cans and other air-tight packages, \$8,343; mutton and lamb, fresh,

\$12,689; canned meats and canned poultry and game, \$21,712; other meats, salted, \$9,601; melons, \$8,502; butter, \$6,004; potatoes, n.o.p., \$28,092; dried and smoked meats preserved in other way than salted or pickled, n.o.p., \$3,216; sheep, \$61,262; cheese, \$1,996; tomatoes, fresh, \$30,093; horses, n.o.p., \$306,840; pork, barrelled, in brine, \$269; hogs, \$50; horned cattle, \$10,877; horses, over one year old, valued at \$50, or less, per head, \$2,311; extracts of beef and fluid extracts, not medicated, and soups of all kinds, \$17,905; poultry and game, n.o.p., \$67,452; vegetables, n.o.p., \$76,233. There is no record of interprovincial trade. All the above can be grown in Manitoba. The farmers have been too busy growing wheat.

**LAKES.** The larger lakes in the province in order of magnitude are: Winnipeg, part, 3,536,000 acres; Manitoba, 1,163,000; Winnipegosis, part, 836,000; Dauphin, 128,000; St. Martin, 80,000; Shoal, 65,000; Swan, 54,000; Waterhen, 53,000; Dog, 41,000; Lake of the Woods, part, 38,200; Ebb and Flow, 25,000 acres.

**MANUFACTURES.** According to 1912 returns of the Dominion Census office the value of Manufactures in Manitoba was \$12,927,439 in 1900, \$53,673,609 in 1910—an increase of 315.19 per cent.

**MINING.** Cement is being manufactured at Babcock, s.e. of Winnipeg, Gloucester County. Good brick clays in unlimited quantity are obtainable from the shales of the Pierre Series. Cement materials east of Lake Winnipeg and near Arnold. Several seams of lignite or brown coal have been found on the northern flank of Turtle Mt. in the southwestern part of the province, but no active mining has been undertaken. Large deposits of gypsum have been found in the townships lying north of Lake St. Martin. The deposits have been worked by the Manitoba Union Mining Company. The crude gypsum is shipped from the mines (Gypsumville) north of Lake Winnipeg, where it is ground and calcined and sold as wall plaster. Salt is found at Salt Creek west of Lake Dauphin, Salt Point, south end of Lake Winnipegosis, at mouth of Swan River and many other places.

**MOUNTAINS.** The mountain elevations are the Porcupine, the Duck and the Riding Ridges in the west; the Turtle and the Tiger Hills in the south. The highest point in Manitoba is in the Porcupine Mountains, 2,500 feet.

**NORTHERN MANITOBA.** The new District added to Manitoba (see under Area) contains Port Nelson and

Fort Churchill, the only two ports of Hudson Bay. It is practically unexplored, but is known to contain large areas of clay land where vegetables and barley do well and wheat can be grown, also merchantable timber, pulpwood, iron, gold, copper, and other minerals. Write for pamphlets, "The New Northwest" and "The Hudson Bay Route," to the Secretary of the Dept. of the Interior, Ottawa.

**POPULATION.** According to the Dominion census returns, the population of the province was: In 1881, 62,260; in 1891, 152,506; in 1901, 255,211; in 1911, 455,614. Between 1901 and 1911 the rural population increased 70,511; the urban 129,892.

**RAILWAY TRANSPORTATION.** Manitoba had 1,900 miles of railway in 1910, over 4,000 miles in 1912. It is crossed by three transcontinental lines: the C.P.R., C.N.R. and G.T.P. (See also under Hudson Bay Route).

**RAINFALL.** According to the table compiled for Heaton's Annual, 1913 edition, by the Meteorological Office in Toronto, the average annual rainfall in inches at different points is as follows: Brandon, 17; Channel Island, 17; Elkhorn, 17; Emerson, 22; Hillview, 22; Minnedosa, 15; Portage la Prairie, 17; Russell, 17; Sourisford, 18; St. Albans, 17; Treherne, 17; Winnipeg, 22.

**RIVERS.** The rivers all run from the eastern and western sides of the province to the lower levels in the middle, draining into Hudson Bay. The principal rivers are: Red, Assiniboine, Winnipeg, Pembina, all having several tributaries.

**SCHOOL LANDS.** These comprise Sections 11 and 29 in every township in Manitoba. They are administered by the Dominion Government in trust for the province and can only be disposed of by sale at public auction to the highest bidder, subject to a certain upset price. The sales are held yearly, provided the conditions are favorable, the lands being first inspected and valued to determine the upset price. Terms: One-tenth cash, and the balance in 9 equal annual instalments with interest at 5%. Scrip or warrants are not accepted in payment. There are no settlement conditions. Grazing permits for these lands are also granted annually at the rate of 6c. per acre in Manitoba. Leases for coal mining are issued for a term of 21 years at a rate of \$1 per acre and subject to a royalty of 5c. per ton. The revenue from these lands is invested in Dominion securities and the interest thereon paid to the province yearly to be

used for educational purposes. Approximate area of school lands in Manitoba sold to 1st April, 1910: 588,427.21 acres.

**SPORT.** Antelope, at one time common, are no longer found in Manitoba. The black bear is common in wooded parts. Coyotes are abundant generally. Virginia, or white deer, are found across Northern Manitoba, weight about 300 lbs. Mule deer are only occasionally found in the province, average weight 275. Wapiti, or elk, found in the northwestern portion of the province, are said to be more numerous now than at any time during the past fifty years. The full-grown buck weighs 600 lbs. and occasionally over 1,000 lbs. The woodland cariboo is found in wooded districts in the northeasterly portion. It is intermediate in size between the elk and the white tail deer. Lynx and wild cat are found throughout the wooded parts. Foxes are abundant. Wolves are common. The Canadian goose, the North or Brant goose and the Wavry or White goose are the most common breed. Of duck, mallard, canvas-back, widgeon, teal, blue-bill, red head, merganser, and spoon bill are found in White Water Lake, White Mud Lake, Plum Lake, Maple Lake, Oak Lake, Lake Manitoba and Lake Winnipeg, as well as other waters. Prairie chicken are common. Partridge (wood grouse) are found in the wooded districts.

**WAGES.** **Agricultural Laborers:** Receive \$25 to \$40 a month with board in the summer months; \$5 to \$20 in winter. In harvest time skilled harvest men receive \$30 to \$50 or \$2 to \$3 a day, subject to deduction on account of wet weather. **General Laborers:** \$2 to \$3 a day without board. **Lumbermen** in logging camps \$30 a month with board. **Mechanics:** At Winnipeg as follows: Bricklayers and masons 67½c. per hour, with a 7 or 8 months' season; plasterers, 50c.; carpenters, 35c. to 45c.; sheet metal workers, 41c.; tailors, \$17 per week; compositors, \$3 to \$3.33 a day. **Domestics:** Cook, general, \$15 to \$35 a month, with board and lodging.

## Agriculture

**ALFALFA.** The Department of Agriculture has established 13 demonstration plots of half an acre each and upward in various parts of the province, with satisfactory results in every case. Many farmers are making this crop one of their staple products. In 1911, 3,521 tons were obtained from 3,902 acres. Apart from its value as a cured fodder it forms a most desirable pasture. See Alfalfa under Western Canada.

BEF  
in  
br  
th  
D  
da  
th  
CA'  
A  
ra  
w  
B  
ca  
th  
CA'  
A  
ti  
J  
st  
DA  
sc  
l  
I  
p  
a  
\$  
4  
7  
b  
ir  
a  
FL  
r  
l  
a  
FO  
p  
a  
a  
a  
a  
FR  
S  
v

**BEEKEEPING.** The luxuriant vegetation, and the increasing cultivation of a number of varieties of clover, make bee culture easy and profitable. The market is large in the home cities. The highest record at the Provincial Department of Agriculture is 9 lbs. per day for 10 to 14 days, and 120 lbs. per year. The industry is largely on the increase.

**CATTLE.** There is an increasing demand for stockers. An immense crop of coarse grains and fodder is easily raised. With a greater supply of help greater attention will be paid to feeding fat cattle. The Manitoba Cattle Breeders' Association hold an annual sale of pure-bred cattle at Brandon. In 1911 there were 407,611 cattle in the province.

**CATTLE—CHAMPION STEER.** Glencarnock, the big Angus steer, declared the champion of the 1912 International Live Stock Exposition at Chicago, was reared by J. B. McGregor, of Brandon, Man.; weight 1,412 lbs. This steer was sold for 50c. per lb. on the hoof.

**DAIRYING.** Dairying is still on a comparatively small scale. In 1912 the output of creamery butter was 2,931,138 lbs.; value, \$820,718.64; average price per lb., 28c. Dairy butter, 4,333,905 lbs.; value, \$1,014,158.14; average price per lb., 23.4c. Cheese, 536,618 lbs.; value, \$69,760.34; average price per lb., 13c. Total value of dairy products, \$1,904,637.12. In 1911, the output of dairy butter was 4,547,827 lbs.; creamery butter, 3,090,579 lbs.; cheese, 560,725 lbs. The decrease in the 1912 output is accounted for by the increasing consumption of cream and milk, as such, in the city of Winnipeg, the value of which in 1912 was at least \$750,000.

**FLAX.** The high prices prevailing for flax have induced many farmers to sow more of it than in other years. In 1912, 196,315 acres were under crop as against 85,836 acres in 1911 and 41,002 acres in 1910.

**FODDER CROPS.** Of cultivated grasses the yield in the province in 1912 was: Brome, 47,337 tons from 25,152 acres, average 1.8; rye, 28,315 tons from 17,473 acres, average 1.6; timothy, 192,783 tons from 114,899 acres, average 1.6; clover or alfalfa, 13,806 tons from 6,572 acres, average 2.1.

**FRUIT GROWING.** Plums, currants, raspberries and strawberries do well. Crabapples are plentiful, and some varieties of larger apples have grown to maturity and do

well, producing good returns. Over 40 varieties are now grown at Nelson by A. P. Stevenson.

**GRAIN CROPS, 1912.** The estimate of the yield of the four principal grain crops of Manitoba, prepared from returns received by the Department of Agriculture of the province from about 770 correspondents, is as follows :

	Acres sown.	Bushels per acre.	Yield, bushels.
Wheat....	2,823,362	20.7	58,433,579
Oats.....	1,939,982	46.0	87,190,677
Barley....	962,928	35.1	33,795,191
Flax.....	196,315	13.6	2,671,729

In 1911 the total yields of the four grains were : Wheat, 61,058,786 bush., average per acre, 18.29. Oats, 73,786,683 bush., average 45.3. Barley, 23,999,239 bush., average 31.5. Flax, 1,205,727 bush., average 14.0. The total grain crop of 182,357,494 bushels in 1912 shows an increase of about 22,000,000 bushels over the total in 1911.

**HORSES.** The Clydesdale breed predominates. There are many Percherons, Shires and Standard Bred horses. Many horses are imported from Ontario. In 1911 the horses in the province numbered 251,572. Present prices rule high. A good pair of Clydesdales will fetch \$600.

**POULTRY.** In 1911 farmers disposed of 134,097 turkeys, 64,407 geese, and 743,277 chickens. Insufficient eggs are produced for home consumption; imports from Ontario and Minnesota are large. Some turkeys and chickens are imported from Ontario. Of hens, Plymouth Rocks, Wyandottes, Rhode Island Reds and Orpingtons are best adapted to withstand the Western winter; of ducks, the Pekin, Rouen and Indian Runner do best; of geese, the Embden and Toulouse, and of turkeys, the Mammoth Bronze are the most commonly raised.

**ROOTS AND VEGETABLES.** Potatoes, parsnips, carrots, cucumbers, cabbages and cauliflowers grow to a very large size. Root crops are not largely grown for feed. In 1912, 10,734,612 bush. of potatoes were grown from 51,878 acres, an average of 206 bush. to the acre. Of other roots, 3,895,118 bush. were grown from 14,109 acres, an average of 276 bushels to the acre. Crop is much neglected.

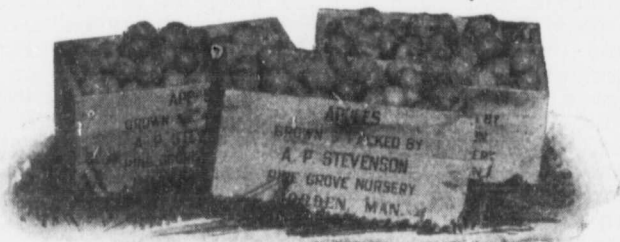
**SHEEP.** It is doubtful if there are more sheep in the province than there were 20 years ago. This is attributed to the loss from prairie wolves, and the expense of proper fencing, which necessitates the maintenance of large flocks. The Winnipeg market is supplied chiefly from the Western

ranches and New Brunswick, Shropshires and Leicesters are the popular breeds. Total sheep in province, 37,227 in 1911. Average annual wool clip, 135,500 lbs.

**SWINE.** With the development of mixed farming more hogs are being raised. In 1911 the number of hogs in the province was estimated at 192,386. The daily average received at Winnipeg is about one-sixth of the capacity of the four packing houses at Winnipeg, which partially supply the requirements of the province. The most common breeds are Berks, Yorkshires and Tamworths.

**THRESHING OUTFITS IN OPERATION.** In 1912, 3,686 threshing outfits were employed in the province, as compared with 3,193 in 1911.

**WHEAT.** The predominant variety is Red Fife, which grades hard, and is known as "Manitoba Hard Wheat." It fetches a higher price than any other variety grown. Fall wheat has been grown in some districts, but not to any great extent. The fall weather generally is too dry. For crop and acreage see Grain Crops. See also Western Canada, Winter Wheat, and Wheat Profit per acre.



## Travel Distances from Winnipeg

### Mileage by Nearest Route

Atlanta, Ga., 1,594	Montreal, 1,424
Berlin, Ger., 5,522	New Orleans, 1,704
Boston, 1,754	New York, 1,810
Buffalo, 1,390	Ottawa, 1,304
Chicago, 863	Paris, 5,141
Cleveland, 1,207	Pittsburg, 1,340
Constantinople, 8,756	Portland, Me., 1,721
Denver, Colo., 1,345	Quebec, 1,596
Detroit, 1,135	St. Louis, 1,034
Dublin, 4,436	St. Paul, Minn., 453
Duluth, 325	St. Petersburg, 6,538
Glasgow, 4,624	San Francisco, 2,318
Hong-Kong, 8,167	Seattle, Wash., 1,547
Liverpool, 4,659	Sydney, 9,326
London, Eng., 4,859	Toronto, 1,287
Minneapolis, Minn., 453	Washington, 1,838

### To Canadian Points West of Winnipeg

Banff, Alta., 919	Moose Jaw, Sask., 399
Brandon, Man., 133	Moosomin, Sask., 219
Calgary, Alta., 837	Morden, Man., 81
Camrose, Alta., 778	Nanaimo, B.C., 1,632
Canora, Sask., 302	Neepawa, Man., 116
Cardston, Alta., 824	Nelson, B.C., 1,095
Carman, Man., 52	N. Battleford, Sask., 572
Castor, Alta., 1,036	Phoenix, B.C., 1,213
Cranbrook, B.C., 958	Portage la Pr., Man., 54
Dauphin, Man., 178	Prince Albert, Sask., 541
Edmonton, Alta., 792	Red Deer, Alta., 931
Edson, Alta., 922	Regina, Sask., 357
Estevan, Sask., 298	Revelstoke, B.C., 1,104
Fernie, B.C., 895	Rossland, B.C., 1,150
Field, B.C., 974	Salmon Arm, B.C., 1,167
Grand Forks, B.C., 1,202	Saskatoon, Sask., 466
Greenwood, B.C., 1,225	Sicamous, B.C., 1,149
High River, Alta., 858	Souris, Man., 150
Hosmer, B.C., 888	Stettler, Alta., 1,000
Humboldt, Sask., 425	Swift Current, Sask., 509
Indian Head, Sask., 316	Taber, Alta., 726
Kamloops, B.C., 1,233	Vancouver, B.C., 1,483
Killarney, Man., 165	Vernon, B.C., 1,195
Lacombe, Alta., 950	Victoria, B.C., 1,560
Lethbridge, Alta., 758	Wainwright, Sask., 666
Macleod, Alta., 790	Watrous, Sask., 408
Medicine Hat, Alta., 657	Wetaskiwin, Alta., 978
Melville, Sask., 279	Weyburn, Sask., 314
Minnedosa, Man., 134	Yorkton, Sask., 278

Whe

The  
official  
author  
Infor  
serve  
resous  
obvior  
absolu  
rule,  
popul  
Whe  
suppi

AL  
m., 1  
1911;  
Altit  
nishe

PC  
West  
popu  
ures  
figura  
turn:

Ch  
To

ALE  
Gi  
5  
liv

W  
ALT  
ele  
2

Bl



## Boards of Trade Register

### When Writing to a Local Reference, Mention Should be Made of Heaton's Annual

*This Gazetteer is revised every year and includes certified official returns from local Boards of Trade and the municipal authorities of towns where no Board of Trade is established. Information is given generally as received. The Editors reserve the right to use information obtained from other reliable resources and to edit the returns made, but they cannot, for obvious reasons, from their own knowledge, vouch for the absolute accuracy of every detail in each case. As a general rule, entries in this Register are confined to towns over 400 population in the West. Exceptions are made in special cases. Where possible, a reliable local reference is given, who will supply further information upon request.*

**ABBREVIATIONS.**—Tel., Telegraph; Ex., Express; m., miles; Pop., Population according to Returns of Census, 1911; Pop.\*, estimate of Mayor or local Board of Trade. Alt., Altitude—ft. above the sea level. Altitudes are given as furnished by the Dominion Meteorological Office at Toronto.

**POPULATION STATISTICS.**—The rapid settlement of Western Canada makes it extremely difficult to give accurate population statistics. As a rule the last Dominion Census figures are given. If these are misleading, wherever possible the figures are taken from local estimates, based on Assessment Returns or a Special Civic Census.

Chief Town of County Judicial District marked ¶

Towns represented among Illus. Advertisements marked †

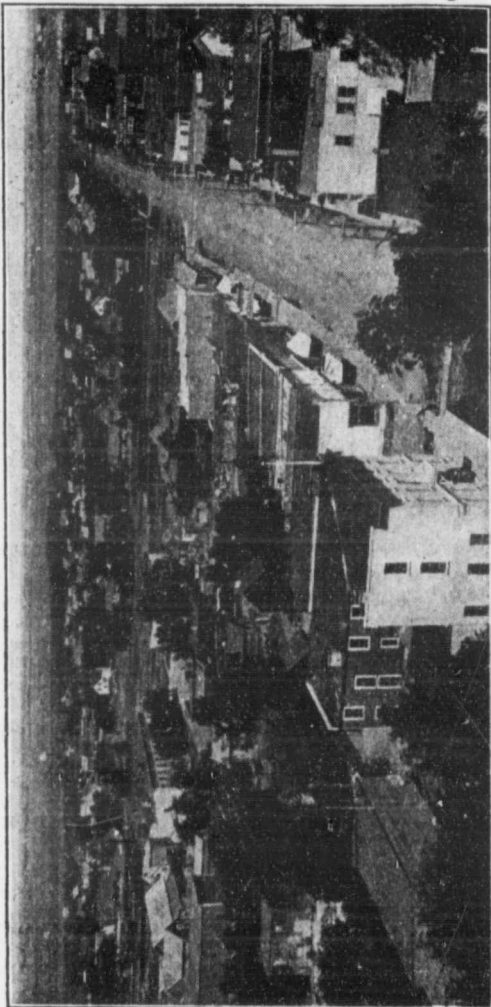
**ALEXANDER**, on C.P.R., 149 miles w. of Winnipeg. Hotel, Grandview \$2. 3 churches (Ang., Pres., Meth.), 1 school, 5 elevators (159 000 bushels), telephone, lumber yard, livery stable, several stores, 1 bank. Pop. \*500.

**SPECIAL OPPORTUNITIES.**—Grist mill, general store. Write Mgr. Bk. B.N.A.

**ALTONA**, on C.P.R. 64 miles from Winnipeg. Hotel, 4 elevators (151,000 bushels), flour mill, telephone, bank, 2 livery stables. Pop. \*450.

**SPECIAL OPPORTUNITIES.**—Laundry, tailor. Write Mgr. Bk. Montreal.

## CARMAN—A Growing Railway Centre



Carman, Looking North

Suitable factory sites are available contiguous to three railroads. Plenty of accommodation for working people. Living expenses are small. The Board of Trade will welcome any enquiries and will endeavour to obtain concessions, exemptions from taxation, etc., for new industries. See description of Carman on page 19, and of Dufferin Rural Municipality on page 54

Write for further information to

**SECRETARY, BOARD OF TRADE - - CARMAN, MANITOBA**

**BALDUR**, on C.N.R. branch line. C.N.R. Ex. Tel. C.N.R. 60 miles s.e. of Brandon. Hotel, Baldur. 4 churches, intermediate school, 1 bank, 3 elevators. Large shipments of cattle and horses. A local option town. Alt. 1,408. Pop. \*450.

**SPECIAL OPPORTUNITIES.**—Woollen factory, dairying, veterinary surgeon. Write Sec. Bd. Trade.

¶**BEAUSEJOUR**, on C.P.R. between Kenora and Winnipeg, 35 miles. Dom. Ex. Tel. C.P.R. Government telephones. Hotels, King Edward, Beausejour \$1.50. 4 churches (R.C., Luth., Ang. and Pres.), 1 public school, pressed brick co. and glass factory. A good farming country. Pop. 847. Write Mgr. Northern Crown Bk.

**BINSCARTH**, on C.P.R., 155 miles from Portage la Prairie. Dom. Ex. Tel. C.P.R. Hotel, Royal \$2 Bank, 4 elevators (116,000 bushels), 3 churches, 1 school, lumber yard, livery stable, 2 blacksmiths, garage, 2 general stores and 8 others. Pop. \*459.

**SPECIAL OPPORTUNITIES.**—Tailor. Write Agent C.P.R.

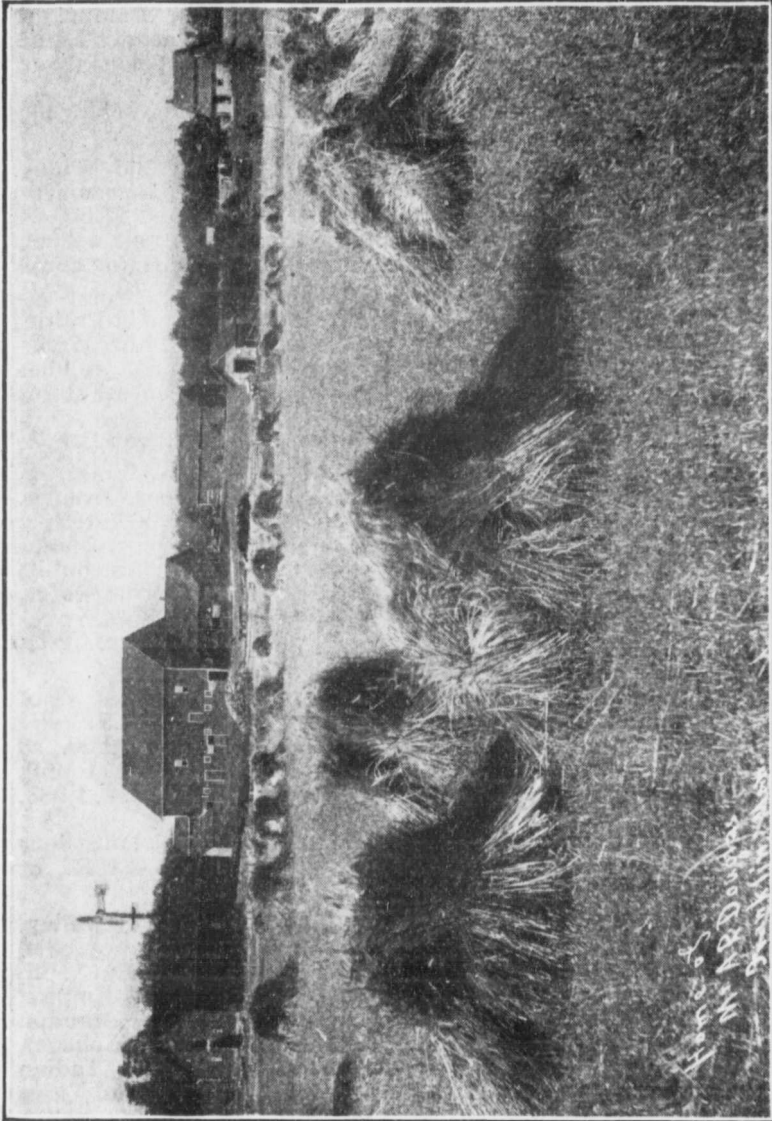
¶**BIRTLE**, on Bird Tail River, 195 miles w. of Winnipeg, on C.P.R., Man. N.W. Ry. and C.P.R. Hamiota branch. Dom. Ex. Local and long distance 'phone 2 hotels, 2 banks, 4 elevators, flour and grist mills, creamery, 2 lumber yards, newspaper, 3 livery stables, 4 churches, public schools, Indian School, town lighted by gas, spring water, no saloons. Good farming country. Pop. 456.

**SPECIAL OPPORTUNITIES.**—Strawboard factory, grist mill. Write Mgr. Union Bk. or Sec. Bd. Trade.

¶**BOISSEVAIN**, on C.P.R. and G.N.R., 48 miles s. of Brandon. Dom. Ex., G.N.R. Ex. Tel. C.P.R. and G.N.W. Hotels, Ryan House \$1.50, Queen's \$2.00. 5 churches, 2 banks, good high school, 5 elevators, 1 mill, electric light. A fine wheat-growing district. Alt. 1,683. Pop. 918.

**SPECIAL OPPORTUNITIES.**—Creamery, brick plant, flour mill (300 bbls. daily) for sale. Write Agent C.P.R., or Mgr. Dominion Bk.

¶**BRANDON**, on southern slope of Assiniboine River valley, on C.P.R., C.N.R., G.N.R., 133 miles w. of Winnipeg. 346 passenger trains weekly. Dom. Ex., C.N.R. Ex. Tel. C.P.R., C.N.R., G.N.W. Hotels, C.N.R., Cecil, Empire, Imperial, and 12 others. 16 churches, 3 colleges (Brandon Baptist, Clarke Hall and Wheat City Business College), collegiate institute, 6 district schools, 1 separate; Indian Industrial school; Normal school being built Land Titles



A Typical Farm in Manitoba. See pages 45 to 72

offic  
men  
ma  
stoc  
(ca  
gas  
incl  
men  
crea  
sad  
thro  
ing  
eng  
fac  
per  
mil  
far  
190  
N  
C.M  
ext  
Are  
ple  
S  
fac  
pag  
fac  
bric  
fac  
ger  
tan  
Wr  
¶C  
dor  
Ho  
sch  
mil  
ow  
far  
W  
¶C  
G.  
Te  
\$2  
tea

office, general hospital, 3 daily papers, motor fire department with pumping pressure 140 lbs., 27 miles water mains, 22 miles sewer, 45 miles granolithic sidewalks, stock yards accommodating 10 to 12 carloads, 6 elevators (capacity 530,000 bush.), 3 flour mills, electric light plant, gas and power plant, central heating plant. Industries include 2 stove fittings, 2 breweries, 2 brick yards, 2 cement block factories, 3 pump and windmill works, 2 creameries, 3 sash and door factories, wholesale firms in saddleries, fruit, grocery, hardware, carriages, etc.; 4 thresher companies, fanning mill factory, 1 tent and awning factory, 3 cigar factories, 2 marble works, gasoline engine plant, 2 confectionery factories, office furnishings factory, etc.; 10 agric. implement agencies. Building permits in 1911 over 1 million dollars. In radius of 60 miles there are 134 towns and villages, nearly 30,000 farmers, and elevator capacity of 19 million bush. Pop. 1901, 5,620; 1912 (assessment census), \*14,453.

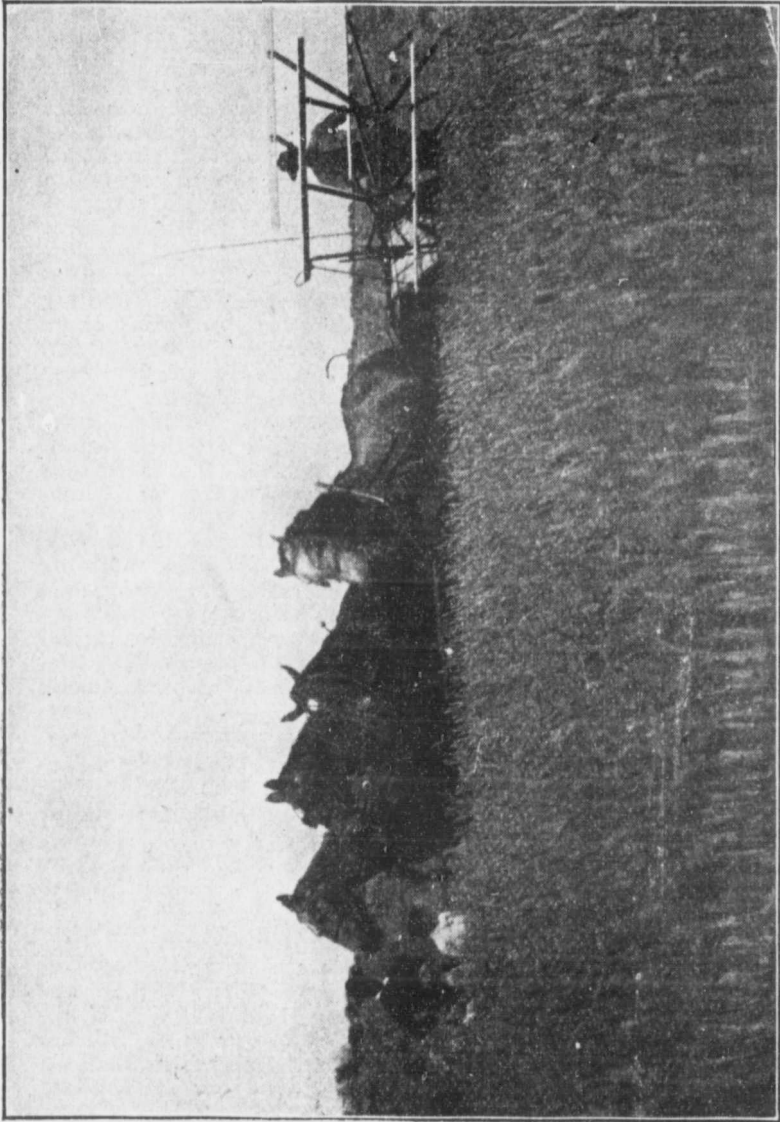
NOTE.—The G.T.P. expected to enter Brandon soon, C.N.R. will build a new passenger track to their depot, extend freight sheds, and build spur line to Winter Fair Arena (seating 6,000), which is under construction. Completion of street ry. expected in 1913.

SPECIAL OPPORTUNITIES.—Soap factory, boot and shoe factory, paper and wooden box factory, tar and building paper factory, implement works, carriage and automobile factories, taxidermists, shoe polish, paint, sewer pipe and brick plants, dressmakers, furriers, biscuit factories, cereal factories, canning factories, can manufacturers, well diggers, chore men, farm laborers, tent and awning factories, tanneries, strawboard. Openings in almost every line. Write Commissioner, Brandon Commercial Bureau.

¶**CARBERRY**, on C.P.R. and C.N.R., 28 miles e. of Brandon. Dom. Ex., C.N.R. Ex. Tel. C.P.R. and C.N.R. Hotels, Western, Royal, Alexandra 3 churches, public school, 7 elevators, flour mill (not operated), 2 planing mills, 2 newspapers, 4 livery stables, 3 banks. Town owns electric light plant and waterworks system. Good farming district. Alt. 1,258. Pop. 878.

SPECIAL OPPORTUNITIES.—150 bbl. flour mill for sale. Write Sec. Bd. Trade.

¶**CARMAN**, on Boyne River, and C.N.R., C.P.R. and G.N.R., 58 miles s.w. of Winnipeg. Dom. Ex., C.N.R. Ex. Tel. C.P.R. and C.N.R. Hotels, Victoria \$2.00, Starkey \$2.00. 5 churches, hospital, 3 banks, fine high school (10 teachers), opera house, dist. office Man. Govt., telephones



Reaping Wheat in Manitoba. See paragraph headed "Wallace Municipality—Elkhorn District—  
R. De W. Waller," on page 72.

Lan  
crea  
own  
Alt.  
St  
yard  
18 n  
facto  
cipa  
Wrie  
¶CAR  
Dom  
els),  
inter  
eral  
St  
ary,  
Toro  
CRYST  
Crys  
toba  
els),  
Lake  
St  
tist.  
CYPR  
Win  
3 ch  
news  
1,283  
¶DAU  
n.w.  
King  
oper  
saw  
and  
ness  
offic  
own  
grav  
first  
Dau  
cont  
by f  
St  
for c

Land Titles office, 4 elevators, flour mill, 2 newspapers, creamery, 4 livery stables, sash factory, fine park. Town owns waterworks, sewerage system and electric light plant. Alt. 872. Pop. \*1,500.

**SPECIAL OPPORTUNITIES.**—Wire fence factory, brick yard, steam laundry, cement works (large marl deposits 18 m.), paint works, foundry, town offers free sites for factories and exemption from taxes. See Dufferin Municipality under "Rural Municipalities" and illus. Advt. Write Sec. Bd. Trade.

†**CARTWRIGHT**, on C.P.R., 149 miles from Winnipeg. Dom. Ex. Tel. C.P.R. Hotel, 3 elevators (85,000 bushels), bank, newspaper, livery stable, laundry, 3 churches, intermediate school, automobile livery and garage, 3 general and 6 other stores. Pop. \*400.

**SPECIAL OPPORTUNITIES.**—Grist mill, dentist, veterinary, carpenter, tailor, shoemaker. Write Mgr. Bk. Toronto.

**CRYSTAL CITY**, on C.P.R., 130 miles s.w. of Winnipeg on Crystal Creek. Dom. Ex. Tel. C.P.R. Hotel, Manitoba \$2. 4 churches, 2 banks, 5 elevators (171,000 bushels), newspaper, livery stable. Duck shooting at Rock Lake, 12 miles. Alt. 1,513. Pop. \*630.

**SPECIAL OPPORTUNITIES.**—Brick and cement plant, dentist. Write Sec. Bd. Trade, or Mgr. Union Bk.

**CYPRESS RIVER**, on C.P.R. Souris branch, 95 miles w. of Winnipeg. Dom. Ex. Tel. C.P.R. Hotel, Clarendon. 3 churches, 5 elevators (150,000 bushels), lumber yard, newspaper, 2 livery stables, 1 bank, 1 high school. Alt. 1,282. Pop. \*500. Write Mgr. Union Bk.

†**DAUPHIN**, on Vermilion River and C.N.R., 178 miles n.w. of Winnipeg. C.N.R. Ex. Tel. C.N.R. Hotels, King's, Grand View, C.N.R. \$1.50, \$2.00. 7 churches, opera house, 2 moving picture theatres, 3 banks, flour mill, saw mill, 4 elevators, machine works, creamery, 2 sash and door factories, mineral water factory, hospital, Business College, Collegiate and 2 public schools, Land Titles office, Dom. Land office, 2 natural parks, rink. Town owns electric light (rate 8c. to 12c. to manufacturers), gravitation water system and sewerage. Building permits first 6 months 1912, \$80,485. Good fishing in Lakes Dauphin and Winnipegosis. Riding Mt. forest reserve contains moose, elk, and deer and wild fowl. Surrounded by fertile farming district. Pop. \*4,000.

**SPECIAL OPPORTUNITIES.**—Dauphin has raw material for cereal mills, biscuits, furniture, tannery, glue, binder

twine, cheese, butter, brewery, soap, strawboard, pulp, bricks, pickles, packing house, employment for farm help, dairyman, carpenter, bricklayer, teamsters, domestics. Write Sec. Bd. Trade.

†**DELORAINÉ**, on C.P.R., 202 miles s.w. of Winnipeg. Dom. Ex. Tel. C.P.R. Hotels, Palace \$1.50, Revere House \$1.50. 2 banks, 5 churches, newspaper, school, machine shop, shoe factory, gas co., 1 flour mill, 6 elevators. Alt. 1,644. Pop. 808.

SPECIAL OPPORTUNITIES.—Practical miller, with capital to operate fully equipped flour mill. Write Mgr. Dominion Bk. or Sec. Bd. Trade.

**DOMINION CITY**, on Rousseau River and C.P.R., 56 miles s. of Winnipeg. Hotel, Queen's \$1.50. 3 churches, school, opera house, 1 bank, 4 elevators (80,000 bushels), 1 flour mill, telephone, newspaper, 2 livery stables. Alt. 787. Pop. \*500.

SPECIAL OPPORTUNITIES.—Creamery, lawyer, baker, dentist.

**ELGIN**, on C.N.R., 167 miles s.w. of Winnipeg. C.N.R. Ex. Tel. C.N.R. Hotel, Elgin. 1 bank, 5 churches. Alt. 1,530. Pop. \*500.

†**ELKHORN**, on C.P.R. main line, 200 miles w. of Winnipeg. Dom. Ex. Tel. C.P.R. Abundant supply of good water, 8-roomed high school, large industrial school, county court, bank, 3 churches, printing office. Hotels, Rosebery \$1.50, Manitoba. 2 lumber yards, 3 implement agents, 2 livery stables, garage, drug store, municipal telephone, cement sidewalks, agricultural society, grist mill, 3 elevators, shipping 400,000 bushels in 1911-1912. A fine mixed farming district. A.F. & A.M., C.O.F. and I.O.O.F. societies. Race track, rifle association, lawn tennis and cricket clubs. \$50,000 new buildings being erected in 1912. Alt. 1,630. Pop. \*600. See Wallace Municipality under "Rural Municipalities" and illus. Advt. Write J. Mooney, Sec. Bd. Trade, Elkhorn.

NOTE.—Proposed main line of G.W.R. is shown to touch Elkhorn with branch from N. Dakota.

†**ELM CREEK**, on C.P.R. main line and branch to Carman, 46 miles from Winnipeg. Hotels, Grandview, Wayside. 3 churches (Ang., Pres., Meth.), 1 school, 3 elevators (70,000 bushels,) 1 bank, 2 livery stables. Pop. \*400.

NOTE.—\$10,000 C.P.R. station in construction.

†**EM**  
and  
C.N.  
\$1.  
dau  
2 li

†**GIL**  
mil  
Go  
me  
(ca  
1 c  
(13  
an  
bor  
Big  
\$  
tor  
Wr

†**GIN**  
nip  
Gin  
cre  
Do  
of  
re-  
\$  
lav

†**GL**  
Po  
4 c  
do  
cr  
88

†**GL**  
Dc  
ch  
bu  
on  
W

†**GR**  
D:  
00  
m  
gr



¶**EMERSON**, on Red River and C.P.R., C.N.R., G.N.R. and Soo line. Dom. and C.N.R. Ex. Tel. C.P.R., C.N.R. Hotels, Russell House \$1.50, Anglo-American \$1.50. 5 churches, 2 public schools, 1 elevator, farming, dairying and ranching, cement block plant, lumber yard, 2 livery stables, newspaper. Alt. 792. Pop. 1,043.

¶**GILBERT PLAINS**, on Valley River and C.N.R., 198 miles n.w. of Winnipeg. C.N.R. Ex. Tel. C.N.R. Govt. phone, long dist., local and rural. Hotels, Commercial, King Edward \$1.50. 3 churches, 1 brick yard (cap. 3½ millions), 1 newspaper, 1 consolidated school, 1 creamery, 1 lumber yard, 3 livery stables, 4 elevators (130,000 bushels), 2 banks. Plan is projected to make an artificial lake for power and picturesque resort. Neighborhood supplies marl brick clay, spruce, tamarack, poplar. Big and small game. Alt. 1,314. Pop. 542.

SPECIAL OPPORTUNITIES.—Flour mill, beet sugar factory. Abundant water power available, easily developed. Write Municipal Treasurer.

¶**GIMLI**, on Lake Winnipeg, on C.P.R., 59 miles n. of Winnipeg. Electric ry. to Selkirk, 7 miles. Hotels, Lakeview, Gimli. 2 churches (Luth., Unit.), 1 high school, 3 creameries, 10 lumber yards, newspaper, 3 livery stables. Dom. Ex. Tel. C.P.R. A nice park. Large quantities of wood from mills on the lake are brought here and re-shipped. Pop. 496.

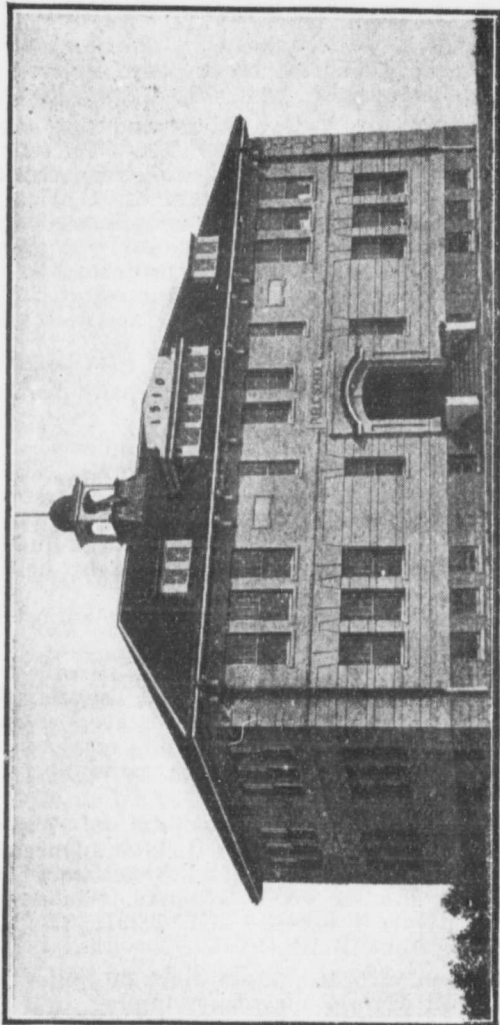
SPECIAL OPPORTUNITIES.—Saw mills, planing mills, lawyer, bank. Write Agent C.P.R.

¶**GLADSTONE**, on C.P.R. and C.N.R., 35 miles from Portage la Prairie. Hotel, Alhambra and Travelers \$1.50. 4 churches, public school, 2 banks, 3 elevators, sash and door factory, brick factory, flour mill, machine shop, creamery, telephone, 2 livery stables, newspaper. Alt. 884. Pop. 782.

¶**GLENBORO**, on C.P.R., 105 miles s.w. of Winnipeg. Dom. Ex. Tel. C.P.R. Hotels, Leland Queen's. 4 churches (Ang., Pres, Luth., Meth.), 3 elevators (90,000 bush.), telephone, lumber yard, 2 banks. Good fishing on Assiniboine River, 4 miles. Alt. 1,231. Pop. 400. Write Mgr. N. Crown Bank.

‡**GRANDVIEW**, on C.N.R. main line, 30 miles w. of Dauphin. C.N.R. Ex. 5 elevators, lumber mill (120,000 ft. per day), machine shop, 2 banks, hotel, intermediate schools, \$10,000 theatre, waterworks, sewers, granolithic sidewalks. Centre of fertile farming district.

## ELKHORN, IN THE FAMOUS HARD WHEAT BELT



Public School at Elkhorn

Elkhorn is situate in the famous hard wheat belt of Western Manitoba. Crop failures are unknown. A mixed farming district. Virgin lands can be bought at a reasonable figure near Elkhorn. Read descriptions of Elkhorn and Wallace Municipality on pages 22 and 70, and write

**SECRETARY, Board of Trade, ELKHORN, MAN.**

Du  
wit  
y  
s  
cre  
vie  
illu  
GR  
fro  
and  
6  
1  
tio  
Pop  
HA  
Bra  
bus  
pub  
ligh  
1,6  
M  
HA  
mi  
and  
sch  
tel  
fur  
ele  
cap  
Ha  
HO  
Ex  
flo  
pa  
br  
C  
KI  
of  
Gr  
an  
sta  
ce  
fac

Duck Mountains on north, heavily timbered, abounding with game. Alt. 1431. Pop. 637.

NOTE.—Water and sewer system to be extended in 1913.

SPECIAL OPPORTUNITIES.—Brick yard, grist mill, creamery, stave factory, box factory. See under Grandview Municipality, under "Rural Municipalities" and illus. Advt. Write Mayor or Sec. Bd. of Trade.

¶**GRETNA**, on C.P.R. and Midland div. G.N.R., 70 miles from Winnipeg. Dom. Ex., G.N.R. Ex. Tel. C.P.R. and G.N.R. Hotels. Queen's, Anglo-American \$1.50. 6 elevators (103,000 bushels), telephone, lumber yard, 1 bank, newspaper, livery stable, customs and immigration office, 3 churches (Pres., Luth., R.C.). Alt. 829. Pop. 510. Write Mgr. Bk. Montreal.

¶**HAMIOTA**, on C.P.R. Miniota branch, 50 miles n.w. of Brandon. Dom. Ex. Tel. C.P.R. 6 elevators (162,000 bushels), flour mill, hotel, 3 churches, 2 banks, large public school, telephone, acetylene gas for domestic light, 2 lumber yards, newspaper, 4 livery stables. Alt. 1,696. Pop. 565.

SPECIAL OPPORTUNITIES.—Butcher, restaurant. Write Mgr. Union Bank.

¶**HARTNEY**, on C.N.R. and C.P.R. Estevan branch, 40 miles from Brandon. Dom. Ex., C.N.R. Ex. Tel. C.P.R. and C.N.R. Hotels, Avondale, Imperial \$2. 4 churches, school, 2 banks, opera house, 6 elevators, brick plant, telephone, 2 lumber yards. Seven lakes within 20 miles furnish good goose and duck shooting. Pop. \*586.

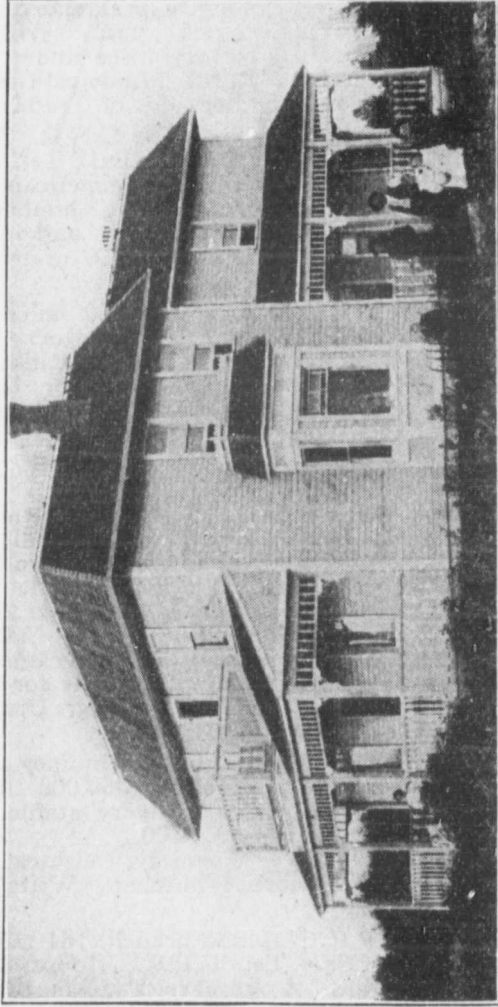
SPECIAL OPPORTUNITIES.—Creamery, development of electric power in Souris River, flour mill idle for lack of capital. Write Sec.-Treas. Bd. Trade, or Mgr. Union Bk., Hartney.

¶**HOLLAND**, on C.P.R., 86 miles w. of Winnipeg. Dom. Ex. Tel. C.P.R. Hotel, 5 elevators (330,000 bushels), flour mill, telephone, lumber yard, livery stable, newspaper, 1 bank. Alt. 1,237. Pop. \*500.

SPECIAL OPPORTUNITIES.—Creamery, electric light, brick plant, good clay nearby, butcher. Write Agent C.P.R.

¶**KILLARNEY**, on C.P.R. Napinka branch, 164 miles s.w. of Winnipeg. Dom. Ex. Tel. C.P.R. Hotels, Leland, Grand Central, Melville. 4 churches, 2 banks, town hall and opera house, 5 elevators (137,000 bushels), 2 livery stables, newspaper, gymnasium, flour mill, creamery, cement block plant, 2 lumber yards, 1 sash and door factory, 1 machine shop, telephone, electric light and power

# GRANDVIEW, MANITOBA



The home of a successful farmer who made all his money in the Grandview District. There are many such homes in this district.

There is no better district in Western Canada. Grain growing, stock raising and dairying are all carried on successfully in the Grandview Rural Municipality. Read descriptions on pages 23 and 61. For further information write

**J. F. ORR, SEC., BOARD OF TRADE, GRANDVIEW, MAN.**

pla  
exl  
a  
W  
M  
D  
di  
ch  
an  
de  
M  
E  
\$1  
co  
ho  
so  
a  
pa  
M  
B  
p  
B  
S  
st  
o  
a  
\*  
M  
MI  
o  
l  
d  
M  
t  
v  
J  
S  
L  
c  
c  
c

plant, public and high schools, a ladies' brass band. An exhibition held here annually. Fine lake here. Makes a good summer resort. Alt. 1,625. Pop. \*over 1,010.

**SPECIAL OPPORTUNITIES.**—Creamery, laundry, garage. Write Town Clerk.

¶**MACGREGOR**, on C.P.R. 78 miles w. of Winnipeg. Dom. Ex. Tel. C.P.R. Deer Station on G.T.P.,  $\frac{3}{4}$  mile distant. Hotels, Stanley \$1.50, Grandview \$1.50. 3 churches, bank, newspaper, 3 elevators, creamery, wheat and grist mills. Pop. \*700.

**SPECIAL OPPORTUNITIES.**—Flour mill, brick plant, dentist, good hotel. Write Agent C.P.R.

¶**MANITOU**, on C.P.R., 102 miles s.w. of Winnipeg. Dom. Ex. Tel. C.P.R. Hotels, Ellis House, Cassin House \$1.50. 5 churches, public and normal schools, newspaper, county court, flour mill, 5 elevators, creamery, opera house, 2 liverys, skating and curling rink, agricultural society, 2 banks. Pop. 639.

**SPECIAL OPPORTUNITIES.**—Oatmeal mill, creamery, aerated water plant, brick plant, photographer, pork packing. Write Sec. Bd. Trade.

¶**MELITA**, on Souris River and C.P.R., 67 miles from Brandon. Dom. Ex. Tel. C.P.R. Hotels, Metropolitan, Commercial \$1.50. 5 elevators (161,000 bushels), flour mill, brick plant, cement block plant, telephone, 2 lumber yards, 2 banks, 2 newspapers, creamery, 3 livery stables, 4 churches, collegiate and high school, Lands Title office, 3 parks, one on Souris River used for picnics. There are strong indications of natural gas, Alt. 1,410. Pop. \*750.

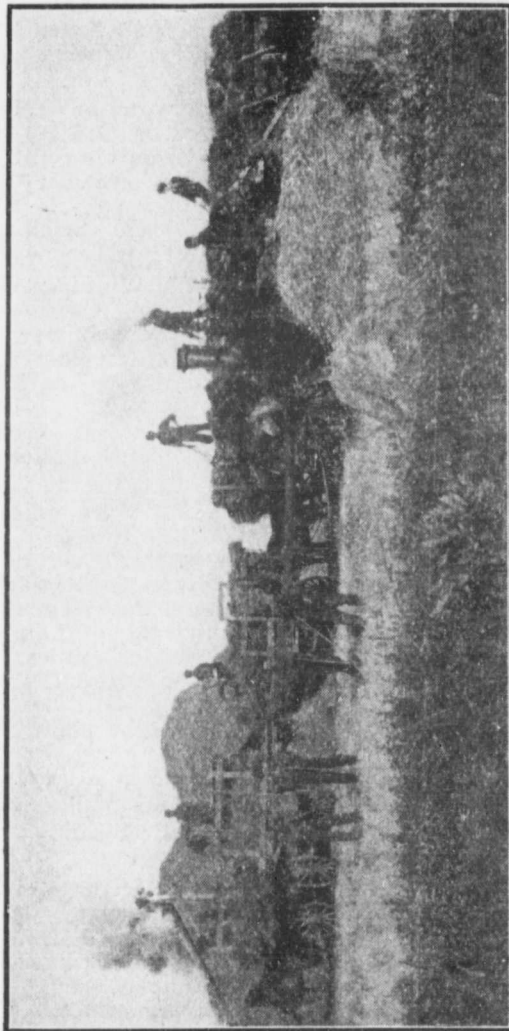
**SPECIAL OPPORTUNITIES.**—Electric light plant. Write Mgr. Union Bk. or Sec. Bd. Trade.

¶**MIAMI**, 80 miles s.w. of Winnipeg, at foot of Pembina Mts. on Miami-Somerset br. of C.N.R. 3 churches, 3 elevators, 1 lumber yard, several stores, 1 bank, 1 school. Good district for mixed farming.

¶**MINNEDOSA**, on Little Saskatchewan River, a div. and terminal point of C.P.R. Minnedosa branch. 79 miles w. of Portage la Prairie. Dom. Ex. Tel. C.P.R. Hotels, Tremont \$2, Manitoba \$1.50. 4 churches, 2 banks, 5 elevators (126,000 bushels), 2 lumber yards, electric light, telephone, 1 newspaper, 3 livery stables. Centre of Northern Judicial District. Alt. 1,671. Pop. \*1,600.

**SPECIAL OPPORTUNITIES.**—Power, 3,000 h.p. being developed, oatmeal mill, brick plant. Inducements offered to industries. Write Sec Bd. Trade.

## MORDEN VALLEY A Good Farming District



Threshing Scene at Morden

In Morden Valley the roads, markets, schools, churches of all denominations, banking facilities and railroad accommodation are all good. This is a great fruit belt. Standard apples grow to perfection, also small fruits. Mixed farming predominates, with good farm buildings. Grain, grasses and roots, including sugar beets, do well. Good opening for beet sugar factory. Read descriptions of Morden and Stanley Municipality on pages 29 and 57. Write to

**E. D. KERBY, Sec. Morden Dist. Board of Trade, MORDEN, MAN.**

¶MORDEN, on Cheval Creek, Midland Ry. connecting with G.N.R. to south, on C.P.R., 81 miles s.w. of Winnipeg. Dom. and G.N. Ex. Tel. C.P.R. and G.N.W. Hotels, Arlington \$2.00, Manitoba, Queen's. Large public and high schools, 2 banks, electric light plant owned by town, 3 elevators (90,000 bushels), chop mill, flour mill, cement block plant, telephone, 2 lumber yards, 1 newspaper, 3 livery stables, pump factory, court house and jail, 5 churches and synagogue, veterinary surgeon, garage, hospital (22 beds), nurses' home and isolation hospital. Good farming district. Cement deposits 14 miles distant. Alt. 988. Pop. \*1,500.

NOTE.—\$20,000 post office and customs house to be completed in 1913.

SPECIAL OPPORTUNITIES.—Dairying and mixed farming. See Stanley Municipality, under "Rural Municipalities" and illus. Advt. Write Sec. Bd. Trade.

¶MORRIS, on C.P.R., C.N.R., G.N.R. and N.P.R., 40 miles s. of Winnipeg, on Red River. Dom. Ex., C.N.R. Ex. Tel. C.P.R. and C.N.R. Hotels, Commercial, Cecil \$1.50. 7 churches, school, 1 bank, 4 elevators (120,000 bushels), brick plant (daily output 50,000), telephone (largest exchange in Man., except Winnipeg), 2 lumber yards, newspaper, 3 livery stables, 2 machine shops, mun. gas plant, 3 general stores. Alt. 773. Pop. \*700.

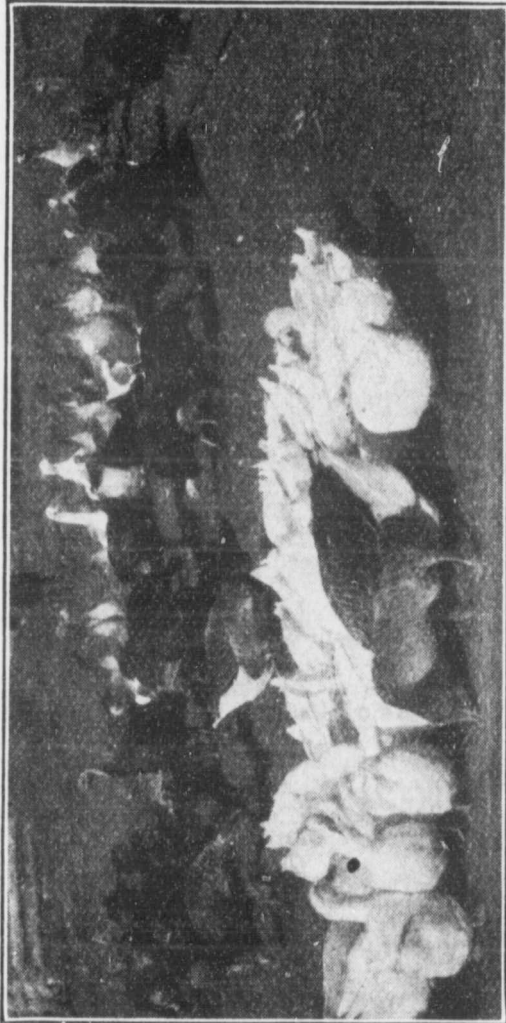
NOTE.—In 1913 will be built C.N.R. cut-off from Portage la Prairie to Vita, and bridge crossing Red River at Morris, and div. point ry. shops.

SPECIAL OPPORTUNITIES.—Flour mill, creamery, water-works, gents' furnishing, dentist, baker, beet sugar factory, flax mill, wagon maker, foundry, a second brick yard, cheese factory, wholesale distributing warehouse for farm machinery, another bank. See Morris Municipality, under "Rural Municipalities" and illus. Advt. Write the Sec. Treas. of Town of Morris.

NAPINKA, on C.P.R. Pembina br. and Estevan and Tilson br., 160 miles from Brandon. Hotels, Leland, Russell \$1.50. 3 churches (Ang., Pres., Meth.), 1 public school, 4 elevators (122,000 bushels), telephone, newspaper, 1 lumber yard, 2 livery stables, 1 garage, laundry, about 12 stores, 1 bank, machine shop. Pop. 326.

SPECIAL OPPORTUNITIES—Cereal mill, planing mill, flour and feed store, machine shop. Write Sec. Bd. Trade.

## MORRIS, MAN. 40 Miles from Winnipeg



Morris Farmers Have Plenty of Money  
Morris is situate in the famous Red River Valley. It is worth your while to read the description of the town on page 29 and of Morris Rural Municipality on page 55. Tell us what you want and we will place you.

**WRITE THE SEC.-TREAS. OF THE TOWN OF MORRIS, MANITOBA**



¶NEEPAWA, on White Mud River, on C.N.R. and C.P.R., 61 miles n.w. of Portage la Prairie. Dom. Ex. C.N.R. Ex. Tel. C.P.R. and C.N.R. Hotels, Hamilton, King Edward \$2. C.N.R. terminals and shops, oatmeal mill (300 bbls. capacity), 4 banks, 4 churches, 2 public schools and collegiate, 2 elevators, 1 machine shop, brick plant, sash and door factory, creamery, 2 newspapers, 3 livery stables, 2 garages, 1 match factory. Town owns electric light system and waterworks (under construction). Big game in Riding Mts. Summer Fair of the N.W. Agricultural and Art Association is held here. Alt. 1,209. Pop. \*2,200.

SPECIAL OPPORTUNITIES.—Steam laundry, cold storage, mortgage loans  $6\frac{1}{2}$  to 8%. Town gives free sites and special tax rates to industries. See Langford Municipality, under "Rural Municipalities" and illus. Advt. Write Sec. Bd. Trade.

‡NINGA, on Pembina br. of C.P.R., 175 miles w. of Winnipeg. Dom. Ex. Tel. C.P.R. Hotel, Turtle Mountain \$2.00. 4 churches, 2 schools, 5 elevators (127,000 bushels), 1 bank, telephone, newspaper, livery stable, skating rink, lumber yard, 2 implement warehouses, C.P.R. Demonstration Farm. Pop. \*300.

SPECIAL OPPORTUNITIES.—Photographer, lawyer, tailor, dressmaker, dentist, veterinary surgeon. See Turtle Mountain Municipality, under "Rural Municipalities" and illus. Advt. Write Sec. Bd. Trade.

OAK LAKE, on C.P.R., 32 miles w. of Brandon. Dom. Ex. Tel. C.P.R. Hotel, 4 churches, 1 bank, 4 elevators (129,000 bushels), flour mill, machine shop, 2 lumber yards, newspaper, 2 livery stables. Alt. 1,415. Pop. 449.

SPECIAL OPPORTUNITIES.—Dentist, lawyer, physician horse dealer, creamery. Write Mgr. Merchants Bk.

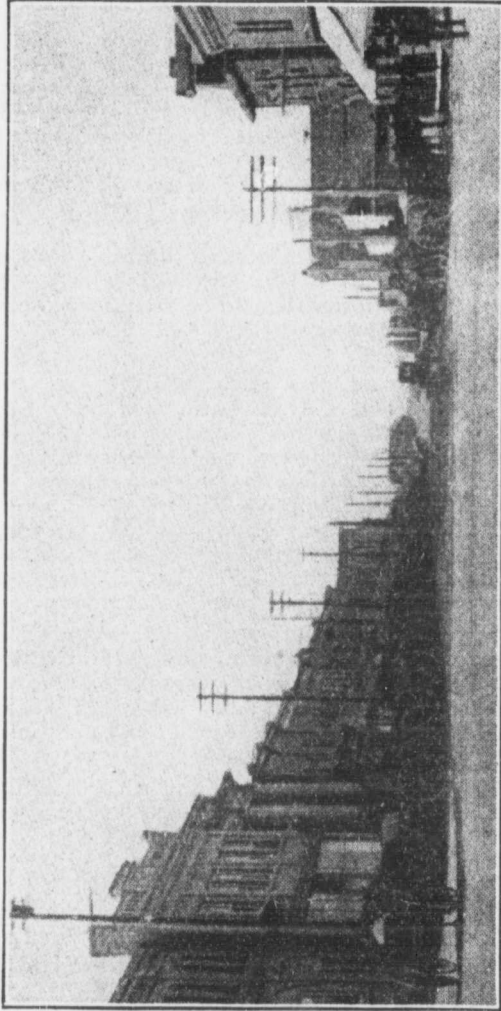
‡OCHRE RIVER, on Ochre River, on C.N.R. main line. C.N.R. Ex. Tel. C.N.R. 13 miles from Dauphin, 164 miles from Winnipeg. Government telephone. 2 schools, 2 churches, 2 elevators, 7 stores. Lake Dauphin 4 miles distant. Alt. 939. Pop. \*250.

¶PILOT MOUND, on C.P.R., 126 miles w. of Winnipeg. Dom. Ex. Tel. C.P.R. Hotels, Queen's \$1.50, Shore House \$1.50. 4 grain elevators (188,000 bushels), 5 churches, school, telephone, 2 lumber yards, creamery (closed at present). Alt. 1,551. Pop. 458.

SPECIAL OPPORTUNITIES.—Flour mill, creamery, dressmaker, laundry. Write Sec. Bd. Trade, or Mgr. Bk. Toronto.

# NEEPAWA, MAN.

Manufacturers Investigate  
Before Locating



Mountain Avenue, Neepawa. The Industrial Centre of North-Western Manitoba

**Seven Lines of Railways.** **Free Sites to New Industries**

For further information write

**SECRETARY, BOARD OF TRADE, NEEPAWA, MANITOBA**

PLU  
3  
st  
ce  
g  
W  
PLU  
M  
O  
te  
38  
W  
+P  
M  
st  
tr  
G  
E  
\$  
\$  
ce  
S  
tr  
L  
p  
b  
a  
h  
u  
b  
s  
p  
s  
I  
v  
f  
s  
o  
t  
h  
m

**PLUMAS**, on C.N.R., 107 miles from Winnipeg. 1 hotel, 3 boarding-houses, 3 churches, 2 grain elevators, 1 livery stable, 1 lumber yard, several stores, 1 newspaper, 1 bank, centre of farming district, making good progress.

**SPECIAL OPPORTUNITIES.**—Lawyer, real estate, barber, good painter, dentist, cheese and starch factories, garage. Write Mgr. Royal Bk.

**PLUM COULEE**, on C.P.R. and G.N.R. Midland br., 66 miles from Winnipeg. Dom. Ex. Tel. C.P.R. Hotels, Queen's, Union. 1 church, 1 school, 7 elevators, bank, telephone, lumber yard, 2 livery stables. Alt. 834. Pop. 380.

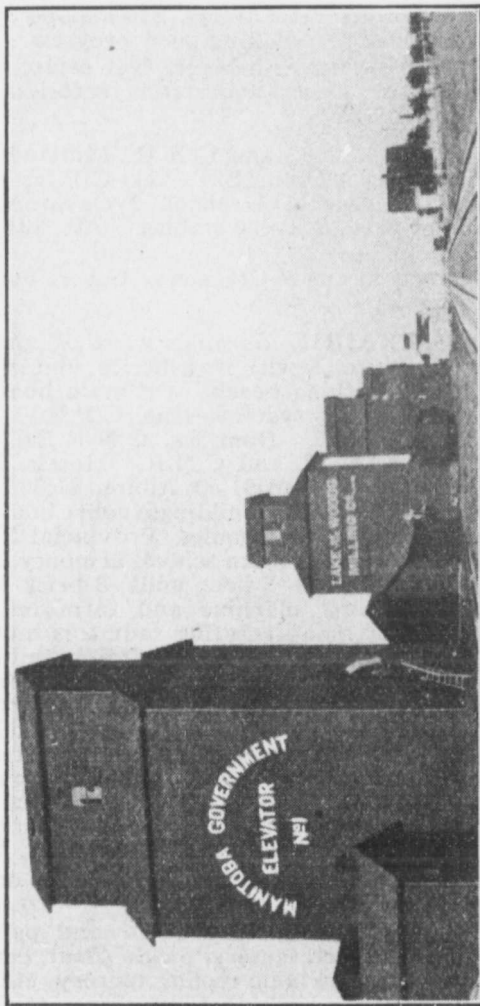
**SPECIAL OPPORTUNITIES**—Creamery, baker, flour mill. Write Agent C.P.R.

†**PORTAGE LA PRAIRIE**, 56 miles w. of Winnipeg, 15 miles s. of Lake Manitoba, with its fisheries, and in season, summer resort and bathing beach. On main lines of four transcontinental railway systems—the C.P.R., C.N.R., G.T.P. Ry and the G.N.R. Dom. Ex., C.N.R. Ex., G.N.R. Ex. Tel. C.P.R., G.N.W. and C.N.R. Hotels, Portage \$2, Merchants \$1.50, Leland \$1.50, Albion \$1.50, Empire \$1.50, Rossin \$1.50. County buildings, court house, General Hospital, Home for Incurables, Provincial Training School, Old Folks' Home, Indian school, armoury, 2 country clubs, 5 grain elevators, 2 flour mills, 3 brick yards, 3 lumber yards, threshing machine and farm implement plant, large plant for manufacturing radiators and steam beating supplies, plant for corrugated iron culverts, 3 automobile garages, steel grain bin factory, oatmeal mills, flour mills, pump factory, sash and door factory. The neighborhood supplies sand and clay for brick and cement blocks and rough wood. City owns up-to-date waterworks, sewerage plant and electric plant. Power supplied at prices according to quantity used. A popular summer resort. The city owns extensive, rich-wooded park lands. Island Park is most attractive. Alt. 854. Pop. \*6,500.

**NOTE.**—A gasoline engine factory and large drill hall will be completed in 1913.

**SPECIAL OPPORTUNITIES.**—Strawboard and paper box factory, biscuit and starch factory, pickle plant, canneries, gasoline engine works, metallic roofing factory, etc. City offers free factory sites adjoining 4 great rys., tax exemptions for fixed assessment for 20 years when 15 or more hands are employed. Several large firms have already moved from larger cities and put up substantial buildings

## NINGA Commands Attention Because



Grain Elevators at Ninga

Ninga and the surrounding district is settled by English, Scotch and Canadians, a progressive lot of people. We have opportunities for more of the same kind, both on the farm and in the town. Read description of Ninga on page 31, and of Turtle Mountain Rural Municipality on page 70. Write for further information to

**President, Board of Trade, Ninga, Manitoba**

here. Others propose doing so at an early date. See Portage la Prairie Municipality, under "Rural Municipalities" and illus. Advt. Write Sec. Bd. Trade, Portage la Prairie, for maps, booklets, etc.

**RAPID CITY**, on Little Saskatchewan River and C.P.R., a divisional point, 36 miles north of Brandon, C.N.R. Dom. Ex. Tel. C.P.R. Hotel, 5 churches, public school, 4 elevators, and one warehouse (120,000 bushels), flour mill, 2 lumber yards, newspaper, 2 livery stables, brick yard, 1 bank. Three water powers, total estimated 40,000 h.p. Alt. 1,580. Pop. \*750.

**SPECIAL OPPORTUNITIES.**—Oatmeal mill, sash and door factory, creamery, laundry. Write Mgr. Union Bk. or Sec. Bd. Trade.

**RESTON**, on C.P.R., 200 miles from Winnipeg. Dom. Ex. Tel. C.P.R. Boarding-house, 1 school, 4 churches, telephone, 4 elevators (112,000 bushels), 2 livery stables, newspaper, laundry, 2 lumber yards, county court office. Good fishing in Pipestone Creek, 2 miles. Pop. \*600.

**SPECIAL OPPORTUNITIES.**—Flour mill, creamery. Write Mgr. Bk. B.N. America.

**ROBLIN**, on C.N.R., 240 miles n.w. of Winnipeg. C.N.R. Ex. Tel. C.N.R. Hotel, 2 churches, high school, telephone, bank, fire hall, rink, 3 general stores, 2 livery stables, 3 lumber yards. An agricultural district. Game plentiful. Pop. \*200.

**SPECIAL OPPORTUNITIES.**—Creamery, small grist mill, newspaper, vet. surgeon. Large tracts of good land uncultivated. Write Sec. Bd. Trade.

**ROLAND**, on C.N.R. and G.N.R. (Midland), 55 miles s.w. of Winnipeg. C.N.R. Ex. Tel. C.N.R. Hotel, Commercial \$1.50. 4 churches, 1 bank, 1 lumber yard, 5 grain elevators, 3 farm implement warehouses, 2 restaurants, 6 stores. Alt. 855. Pop. \*600. Write Mgr. Bk. of Hamilton.

**ROSENFELD**, on C.P.R., 57 miles from Winnipeg. Dom. Ex. Tel. C.P.R. Hotel, 5 elevators (93,000 bushels), telephone, lumber yard, livery stable, 1 bank, 1 Pres. church. Write Mgr. Bk. Montreal.

**ROSSBURN**, 90 miles from Brandon, on Rossburn br. of C.N.R. C.N.R. Ex. and Tel. Hotels, Empire \$2.00, Queen's \$1.00. 1 school, 3 churches (Ang., Pres., Meth.), 1 elevator, 1 bank. Farm lands from \$10 to \$30. Pop. \*400.

**SPECIAL OPPORTUNITIES.**—Flour mill, jeweller, tailor. Write Sec. Bd. Trade, or Mgr. Bk. Toronto.

# WINNIPEG AND WEST

The Canadian Prairie Provinces, now attracting hundreds of thousands of settlers annually, offer the **GREATEST GROWING MARKET IN THE WORLD TO-DAY** for manufactured goods of nearly every description. WINNIPEG, railroad and business centre of the whole Canadian West, offers unparalleled **OPPORTUNITIES TO MEN, MONEY AND ENTERPRISE.**

Locate yo  
where yo  
ful supply  
called rail  
Special



In the Heart of the Business Section

**Manufacturers, Get Information Now about this**

**READ THE WONDERFUL STORY OF WINNIPEG**

<b>Population of Winnipeg</b>	<b>Business Growth Winnipeg Bank Clearings</b>	<b>Building Growth Winnipeg Building Permits</b>	<b>Total Assets Winnipeg Value</b>
1902..... 48,411	1902.. \$188,370,033	1903-5 \$26,264,500	1900.. \$ 2,000,000
1904..... 67,262	1904.. 294,601,437	1906-8 24,444,300	1902.. 2,000,000
1906..... 101,057	1906.. 504,585,914	1909... 9,226,325	1905.. 6,000,000
1908..... 128,000	1908.. 614,111,801	1910... 15,116,450	1906.. 8,000,000
1910..... 151,450	1910.. 953,415,281	1911... 17,550,000	1909.. 13,000,000
1911..... 172,000	1911.. 1,172,762,142	1912 (11 months) ..... \$20,004,900	1911.. 17,000,000
1912..... 200,000	1912 (11 months) .. \$1,370,391,110		1912.. 21,000,000
			1912 Tax Revenue

**Trade Turnover (annual), \$140,000,000**

**Wheat Ins**

Read description of Winnipeg on page 43

*Special Reports Furnished Free on A*

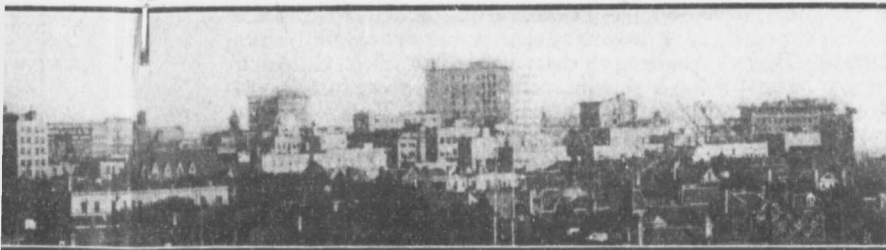
**CHARLES F. ROLAND, WINNIPEG INDUSTRIAL**

# ND WESTERN CANADA

ds of  
ROW-  
stured  
l busi-  
lleled  
RISE.

Locate your Canadian Factory in the Central City of Canada, where you can get *cheap power*, cheap sites, low taxation, plentiful supply of raw materials, best of labor conditions and unexcelled railway facilities.

Special Reports on Any Line of Industry



the Business Section, Winnipeg

ow about this Rich and Ever Increasing Market

## AL STORY OF WINNIPEG IN FIGURES

Growth Building Costs	Total Assessment Winnipeg Realty Values	Industrial Growth Increase in Winnipeg Factory Output	Progress in Schools No. of Tchr. Attendance
264,500	1900.. \$ 25,077,400	1900... \$ 8,606,248	1871... 1 35
444,300	1902.. 28,615,810	1905... 18,983,248	1886... 49 2,831
226,325	1905.. 62,727,680	1910... 39,400,608	1900... 119 7,500
116,450	1906.. 80,511,727	297 Factories.	1905... 192 11,675
550,000	1909.. 131,402,800	15,000 hands employed.	1910... 340 17,738
(Months)	1911.. 172,677,250	\$40,000,000 invested.	1911... 375 21,210
1,004,900	1912.. 214,360,440		
	1912 Tax Rate—12 mills		

000 Wheat Inspected, 1911, 101,326,250 bushels

Read description of Winnipeg District on page 72

s Furnished Free on Application to

INDUSTRIAL BUREAU, WINNIPEG, CANADA

¶**RUSSELL**, on C.P.R. and C.N.R. Dom. Ex., C.N.R. Ex. Tel. C.P.R., C.N.R. 166 miles n.w. of Portage la Prairie. Hotels, Queen's, Grand Central. 4 churches, 5 elevators, 1 pump factory, 2 banks, newspaper, 2 livery stables, cement block plant. Good farming land. Alt. 1,832. Pop. \*700.

SPECIAL OPPORTUNITIES.—Flour and feed mill. Write Mgr. Union Bk., or Sec. Bd. Trade.

¶**ST. BONIFACE**, on Red River, opposite Winnipeg, on C.P.R., G.T.P., G.N.R. and C.N.R. Dom. Ex., C.N.R. Ex., Can. Ex. Tel. C.P.R., G.N.W., G.T. and C.N. Electric railway to Winnipeg. Hotels, St. George, Stockyards, \$1.50, Norwood, Couture, Quebec, St. Boniface Can. Northern, \$1. 2 newspapers, 4 churches, 3 banks, Orphanage, Boys' Academy, convent, seat of R.C. Archbishop of Manitoba, 3 public schools, 1 Normal, 2 colleges, college, seminary, 2 hospitals, Old Folks' Home, 5 brick factories, 5 lumber yards and planing mills, rolling mills, quarry, linseed oil mills, 4 elevators, flour mill, 6 sash and door factories, 2 paint factories, malting, tar paper works, ceiling and roofing plant, Artificial Ice Co., Stanley Mineral Springs and Brewing Co. locating here. Union Stock Markets Co. have expended \$500,000 here this year and will expend as much next. City can grant tax exemptions under certain conditions. Good waterworks, electric lighting and very cheap power. Alt. 756. Pop. (Assessment Commissioner's returns, 1912), 9,992.

SPECIAL OPPORTUNITIES.—All industries connected with live stock trade: Abattoirs, meat packing, tanneries, etc. City is empowered to give fixed assessment on land for 20 years, and exemption from taxes. See illus. Advt. Write Sec. Bd. Trade.

**ST. CLAUDE**, on C.P.R., 62 miles from Winnipeg. Dom. Ex. Tel. C.P.R. Hotel, elevator (30,000 bushels), telephone, lumber yard, livery stable. Pop. \*300.

SPECIAL OPPORTUNITIES.—Shoemaker, tinsmith, doctor. Write Agent C.P.R.

¶**SELKIRK**, on Red River, head Lake Winnipeg navigation and seat of its fishing industry. Suburban and summer resort of Winnipeg. 22 miles n. of Winnipeg, on C.P.R. and Electric Railway. C.N.R. to East Selkirk. Dom. and C.N.R. Ex. Tel. C.P.R. Hotels, Merchants, Canada Pacific, Lisgar. 7 churches, 3 schools, bank, newspaper, 2 liveries, saw and planing mill, box factory, 1 wholesale merchandise, 2 navigation companies, 4 cold storage plants, hydro-electric power at very low rate. Splendid



agricultural, horticultural and dairying district contiguous to city market. Concentrating transshipment point for Lake Winnipeg fishing industry, handling 7,000,000 lbs. per annum. Pop. \*3,200.

**SPECIAL OPPORTUNITIES.**—Brick or pottery factory, motor boat factory, match factory, flour mill, market gardeners and dairying. Special inducements to manufacturers. See St. Andrew's Municipality, under "Rural Municipalities" and illus. Advt. Write Bruce Campbell, Publicity Commissioner.

¶ **SHOAL LAKE**, on C.P.R. Dom. Ex. Tel. C.P.R. 181 miles w. of Winnipeg. Hotels, Lakeview, Albion. 4 churches, 5 elevators, 1 block house (230,000 bushels), creamery, cement block plant, machine shop, telephone, lumber yard, newspaper, 3 livery stables. Boating, fishing and shooting. A summer resort. Alt. 1,793. Pop. 591.

**SPECIAL OPPORTUNITIES.**—Oatmeal mill, dentist, woodworker. Write Mgr. Union Bk.

¶ **SOMERSET**, on Carman-Virden br. C.N.R. C.N.R. Ex. Tel. C.N.R. 87 miles s.w. of Winnipeg. Public and high schools, 4 churches, 2 hotels, 1 bank, 3 elevators, farming and ranching. Alt. 1,565. Pop. \*400.

**SPECIAL OPPORTUNITIES.**—Flour mill, cheese factory and creamery, veterinary surgeon, another elevator. See Lorne Municipality, under "Rural Municipalities" and illus. Advt. Write Sec. Bd. Trade.

¶ **SOURIS**, on Souris River and C.P.R., 31 miles s.w. of Brandon, div. point. Dom. Ex. Tel. C.P.R. Hotels, King Edward, Crescent \$2, Glenwood \$1.25. 4 churches, 3 elevators, telephone, planing mill, public and high schools, flour mill, show case factory, foundry and machine shop, acetylene gas plant, which lights town, waterworks and sewerage system, a fine natural park with good fishing, boating and safe bathing, C.P.R. shops. Alt. 1,400. Pop. \*2,000.

**SPECIAL OPPORTUNITIES**—Electric light, brick plant, laundry, building houses to rent, plumbers and gasfitters, vegetable cannery. 800 h.p. can be developed. Write Sec. Bd. Trade.

¶ **STONEWALL**, on C.P.R., 21 miles n. of Winnipeg. Dom. Ex. Tel. C.P.R. 2 hotels, 2 banks, 4 churches, public school and collegiate institute with agricultural branch; 2 grain elevators, pickle factory, cement block plant, 2 newspapers, 3 livery stables, 4 stone quarries, 6 lime kilns. Alt. 826. Pop. \*1,200.



NOTE.—Winnipeg Elec. Ry. Co. is building car, light and power plant. Electric line to Winnipeg will be completed in 1913.

SPECIAL OPPORTUNITIES.—Market garden and milk for Winnipeg market. Write Pres. Bd. Trade.

¶**SWAN RIVER**, on Swan River and C.N.R., 275 miles n.w. of Winnipeg. C.N.R. Ex. Tel. C.N.R. Hotel, \$25,000 public and high school, 4 churches, 1 flour mill, 2 elevators, 2 banks. Extensive timber limits in vicinity—spruce, tamarack, birch, poplar. Fall wheat a feature of fine grain-growing and market-gardening district. Alt. 1,112. Pop. 517.

SPECIAL OPPORTUNITIES.—Planing mill plant for sale, blacksmith shop, dentist. Write Mgr. Bk. Commerce.

¶**TREHERNE**, on C.P.R. Souris br. Dom. Ex. Tel. C.P.R. 77 miles from Winnipeg. Hotel, Ontario. 4 elevators (144,000 bushels), 2 lumber yards, 2 banks, flour mill, creamery, electric light, newspaper, 1 machine shop, 5 churches (Ang., R.C., Pres., Bap., Meth.), public and high schools. Natural gas in small quantities. Alt. 1,211. Pop. \*650.

SPECIAL OPPORTUNITIES.—Cement works (marl found in quantities one mile distant). Good fruit-growing soil. Write Mgr. Bk. Commerce.

¶**VIRDEN**, on Gopher Creek, on C.P.R. main line and Pheasant Hills br., and C.N.R. terminus branch line, 48 miles w. of Brandon. Dom. Ex., C.N.R. Ex. Tel. C.P.R. and C.N.R. Hotels Balmoral and two others. 4 churches, flour mill, 2 machine shops, 6 elevators (190,000 bushels), 3 banks, opera house, town acetylene gas works, cement block plant, brick plant, newspaper, 4 livery stables, 1 pump factory, creamery, 1 foundry, Alt. 1,444. Pop. 1,550.

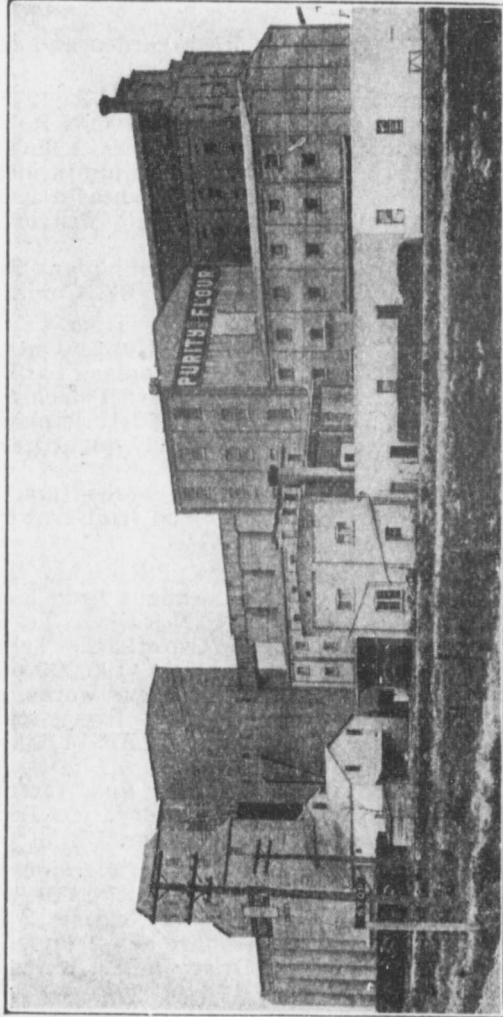
SPECIAL OPPORTUNITIES—Sash and door factory, cement works, waterworks, steam laundry, jeweller, pork packing. Write Sec. Bd. Trade, or Mgr. Bk. of Ottawa.

¶**WASKADA**, on C.P.R., 17 miles from Deloraine. Dom. Ex. Tel. C.P.R. 4 elevators (110,000 bushels), telephone, cement block plant, newspaper, livery stable, 2 lumber yards, bank, 1 school, 2 churches, fire hall. Pop. \*350.

SPECIAL OPPORTUNITIES.—Grist mill. Write Mgr. Union Bk.

¶**WAWANESA**, on Souris River and C.N.R., 25 miles s.e. of Brandon. C.N.R. Ex. Tel. C.N.R. and C.P.R. 3 churches, school, opera house, 1 flour mill, 1 machine shop,

## ST. BONIFACE The Cathedral City of Manitoba



Western Canada Flour Mills, St. Boniface — The Largest in the British Empire Separated from Winnipeg by 200 yards of Red River, which is spanned by six bridges. Manufacturers, Wholesalers and Capitalists will find here Exceptional Opportunities, Low Taxation, Cheap Water, Very Cheap Electric Power, Excellent Factory Sites available on Three Railways. Council offers inducements to Manufacturers and others locating here. Read description of St. Boniface on page 38. Write for further information to

**SECRETARY, BOARD OF TRADE, ST. BONIFACE, MANITOBA**

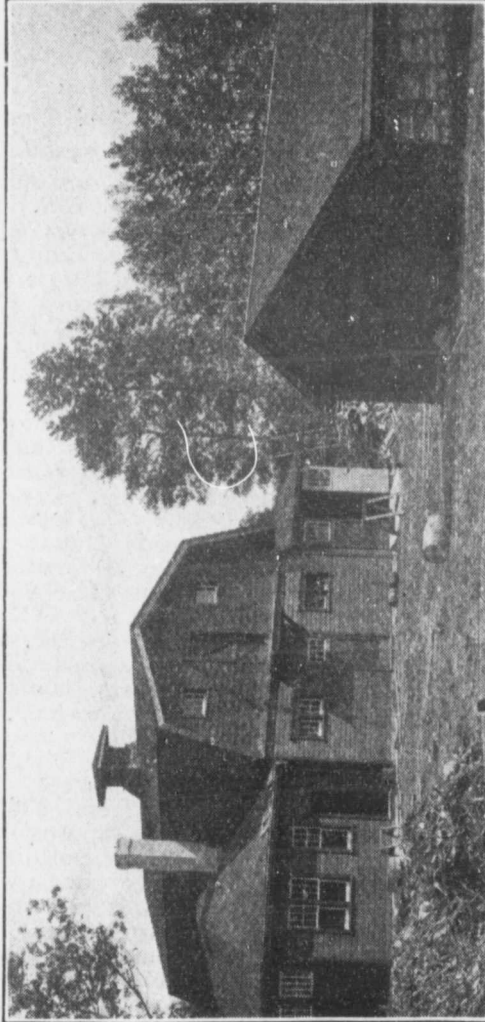
1 bank, intermediate school, H.O. of Occidental Ins. Co. and Wawanesa Mutual Ins. Co. Alt. 1,198. Pop. 350. Write Sec. Bd. Trade.

**WINKLER**, on C.P.R. branch line, 74 miles from Winnipeg. Dom. Ex. Tel. C.P.R. Hotel, Stanley. 6 elevators (193,000 bushels), flour mill, telephone, livery stable, 1 bank, 2 churches (Men. and Bergthaler), \$12,000 school. Alt. 888. Pop. 458. Write Mgr. Bk. Hamilton, Winkler.

**WWINNIPEG**, at confluence of Red River and Assiniboine River. Capital of Manitoba, 60 miles n. of U.S. boundary. Incorporated as a city 1874. Hotels, Royal Alexandra (C.P.R. hotel) \$3 up, Queen's \$2.50 up, Empire \$3 up, Mariaggi, Winnipeg, Leland House \$2, St. Regis \$1.50 up, Seymour \$1.50, Clarendon \$2 up, Strathcona \$1.50 up, and many others. On C.P.R., C.N.R., G.T.P., G.N.R. & N.P. Dom. Ex., Can. Ex., C.N.R. Ex. Tel. C.P.R., G.N.W. and C.N.R. Western headquarters of C.P.R., C.N.R. and G.T.P. Water transportation on Lake Winnipeg and Red River. The largest grain market in the world. The neighborhood supplies wheat and coarse grains, wool, flax, hides, brick clays, glass sands, spruce timber, gypsum, peat, salt, manganese. Civic power, electric, 60,000 h.p. developed, from ½c. per kilowatt. Winnipeg's wholesale turnover exceeds \$140,000,000 annually, and has an enormous mercantile territory under development. Clearing house returns \$106,956,720 in 1901; \$1,172,762,142 in 1911. C.P.R., C.N.R. and G.T.P. shops are located here. Winnipeg has over 300 factories, employing over 15,000 hands, including tents, boxes, cement, butter, carriages, cigars, confectionery, wire, flour mills, harness, iron works, jewellery, packing houses, soaps, clothing, wood fixtures, farm traction engines, steam boilers, structural steel works, planing mills, breakfast foods, rolling mills, cabinets, caskets. Value of annual output of manufactured products, \$39,400,608. Pop. 42,340 in 1901; 1912 civic census (approx.) 200,000.

**SPECIAL OPPORTUNITIES.**—Factories, clothing, food-stuffs, footwear, metal goods, hardware, woodenware, flax and jute goods, linen mills, agricultural implements and machinery, beet sugar works, chemical works, and all lines of industries; banking, loan companies, real estate. See Winnipeg District, under "Announcements," page 72, and illus. Advt. Write for free information to Chas. F. Roland, Commissioner, Permanent Exposition of Industries, Winnipeg, as to manufacturing possibilities in any line of industry.

# SELKIRK -- MANITOBA



View of part of the \$25,000 poultry plant maintained at Selkirk for profit by the manager of Canada's largest departmental store. It is one of several such institutions in this district. Any intelligent man or woman can make an independent living in the Selkirk district from poultry, truck raising, or intensive farming. Small capital only required. See description of Selkirk and St. Andrew's Municipality on pages 88 and 49.

Write to Secretary, Board of Trade - - - Selkirk, Manitoba

be  
in  
no  
by  
the  
S

C  
D  
de  
w  
S  
A  
ba  
A  
\$1  
A

B

## Rural Municipalities

The statistics and particulars in these descriptions have been supplied by the officials of the rural municipality in each case. The descriptions of a few municipalities have not been included where no returns have been received by the Editors. For statistical purposes the province is divided by the Government into crop districts known as the Eastern, North Central, South Central, North Western, and South Western. This division has been followed here.

### Eastern District

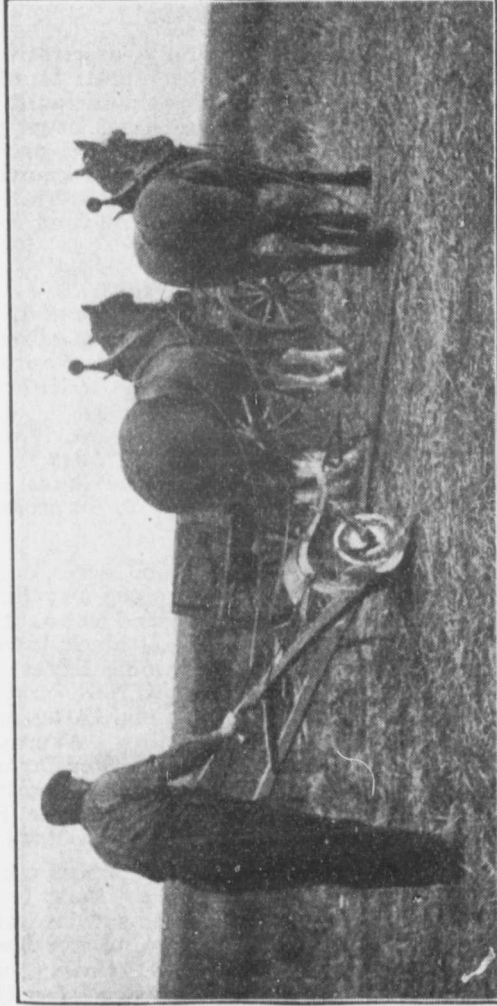
*Area 108 miles e. and w. by 120 miles n. and s. approx. Comprises municipalities of Assiniboia, Bifrost, Brokenhead, De Salaberry, Fort Garry, Franklin, Gimli, Hanover, Kildonan, La Broquerie, Macdonald (east half), Richot, Rockwood, Rosser, St Andrew's, St. Anne, St. Clement's, St. Paul's, St. Vital, Sprague, Springfield, Stuartburn, Tache, Whitemouth. Average crops per acre in 1912: Wheat, 23 bush.; oats, 48; barley, 38; flax, 13; roots, 225. Homestead lands available. Average price per acre of raw lands, \$4 to \$20; improved farms, \$15 to \$50.*

**ASSINIBOIA.** Area 54,950 acres, 8,000 acres cultivated. Extends 12 miles westerly from Winnipeg city limits and 8 miles north and south. Land is low and wet as it recedes from the river. Elsewhere rolling; soil black loam, 8 in., with clay subsoil. Watered by Assiniboia River, through centre. Served by Man. S.W. Ry., C.N.R. and G.T.P. Wells from 30 to 130 feet. Mixed farming. A large portion has been subdivided into building lots. Average price (not based on productive value) of improved farms, \$200. Electric cars to Headingly village. Pop. about 6,500, including English, Canadians (English and French) Write Treasurer of Municipality, Kirkfield Park P.O.

**BIFROST.** Area 571,775 acres, 7,542 acres cultivated. Situate on west side of Lake Winnipeg. Land is flat and marshy; about three-fifths covered with spruce, tamarack, birch and poplar. Stony ridges running northwest and southeast. Soil, black loam 3 to 12 inches on hard, greyish subsoil, stony in parts. Watered by Icelandic River and Lake Winnipeg in east. Served by C.P.R. Teulon branch, C.P.R. Gimli branch, and C.N.R. Rose

# SOMERSET

IT PAYS TO SETTLE IN A  
PROSPEROUS COMMUNITY



Somerset, situate 87 miles south-west of Winnipeg, in a rich mixed farming district with good transportation, churches and schools. For opportunities offering at Somerset, read description on page 59, and description of Lorne Municipality on page 54. Write for further information to

SECRETARY, BOARD OF TRADE - - SOMERSET, MANITOBA

B

I

I

I



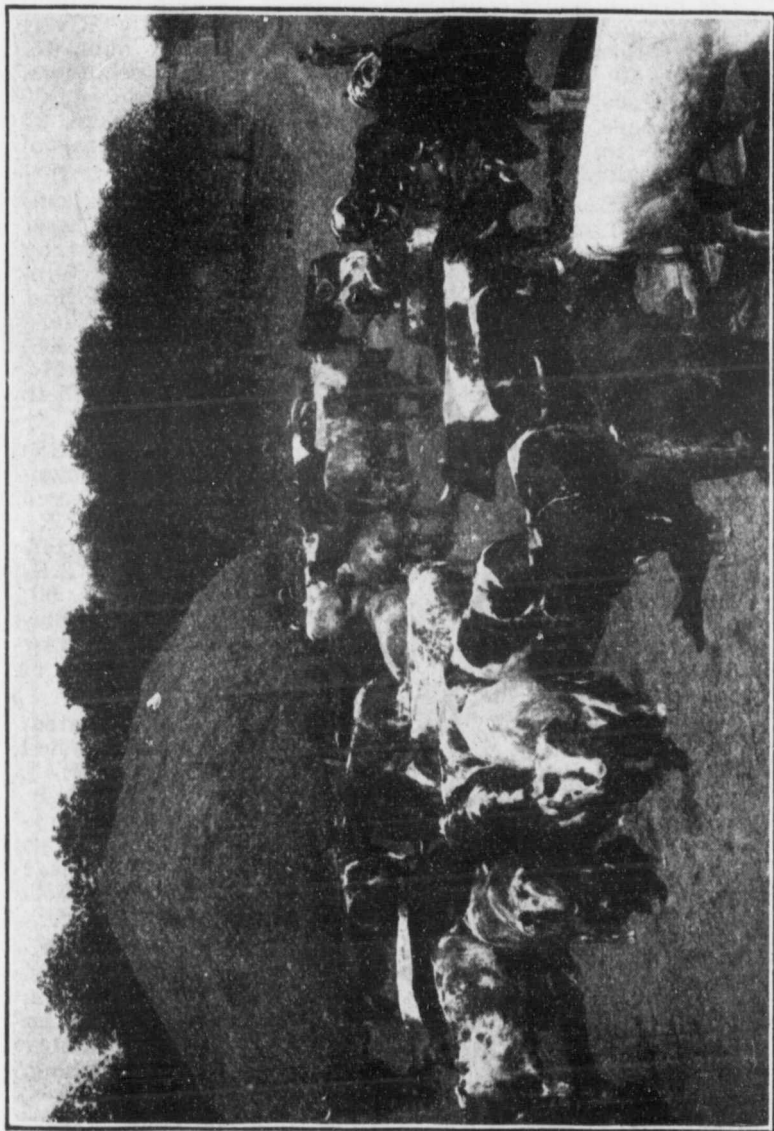
Isle branch under construction. Govt. 'phone to Winnipeg. Local markets at Arborg and Icelandic River. Mixed farming. Wheat averages 20 bush.; oats, 45; barley, 40; flax, 15. Pop. 3,500, including Icelanders, Ruthenians, Hungarians, and Canadians. About 1,000 homesteads available. Price of raw lands per acre, \$7 to \$20; improved, \$10 to \$30. Write Sec.-Treas. of Municipality, Knausa P.O.

**BROKENHEAD.** Area 180,480 acres, 30,000 acres cultivated. Land is rolling and good along rivers and near Beausejour, elsewhere sandy or blue clay. Watered by Brokenhead River. Wells 20 to 75 ft. Markets at Winnipeg and Kenora, Ont. Served by C.P.R. main line. Mixed farming and grain. Wheat crops of 35 bushels; oats, 80; barley, 45; flax, 18, are common. Pop. 5,000, including Poles and Germans. No homesteads available. Price per acre of raw lands, \$15 to \$20; improved, \$35 to \$60. Write Sec. Treas. of Municipality, Beausejour.

**DE SALABERRY.** Area comprises 158,444 acres, 24,359 acres cultivated. Land is flat and dry. Soil black loam, 2 feet deep, especially good land west of C.P.R. Watered by rivers. Wells 50 to 350 ft.; good water east of C.P.R., scarce westwards. Markets at Dufrost, Carey, Otterburne, St. Pierre and Winnipeg. Served by C.P.R. Mixed farming. Wheat averages 22 bushels; oats, 60; barley, 35; flax, 18. Pop. 1,770, including French Canadians, Americans and English. Price per acre of raw lands, \$20; improved, \$35 to \$40. Write Sec.-Treas. of Municipality, St. Pierre P.O.

**HANOVER.** Area 175,608 acres, 32,041 acres cultivated. Land is flat; marshy at e. corner; elsewhere dry. Soil in s.e. of 3 tps. is sandy; of 2 tps. sandy loam; Tp. 7, R. 42, is good land. Wells from 10 to 150 ft. Served by C.P.R. Soo Line and C.N.R. Farming mixed, grain and dairying. Markets at Otterburne, Niverville and Giroux. Crops average: Wheat, 15 bush.; oats, 40; barley, 30; average price per acre, \$4 to \$15; improved farms, \$8 to \$50. Pop. 6,060. Write Sec. of Municipality, Gruenthal P.O.

**LA BROQUERIE.** Area 132,577 acres, 5,430 acres cultivated. Land is rolling and marshy between the hills. Soil sandy loam, about 12 in. subsoil, clay to the north, gravelly to south. A very weedy district. Watered by wells 15 to 150 ft. Markets, Winnipeg in summer, lumber camps in winter. Served by C.N.R. Mixed farming. Wheat averages 15 bush.; oats, 45; barley, 40; flax, 8; roots 150. Pop. 1,500, French and Germans. Hud-



A Group of 60 Head, Average about 1,450 lbs. Each

son's Bay Co. and Western Trust Co. have lands for sale. Two townships available for homesteads. Price per acre of raw lands, \$5; improved, \$20. Write to Sec.-Treas. of Municipality, La Broquerie P.O.

**ROCKWOOD.** Area 344,940 acres, 43,272 acres cultivated. Land is slightly rolling and dry. Soil generally black and clay loam, 1 to 5 ft.; clay subsoil, but varies greatly. Wells 20 to 60 ft. Winnipeg, and local markets at Stonewall, Teulon, Stony Mountain. Served by C.P.R. Mixed farming and grain. Wheat averages 22 bush.; oats, 50; barley, 70; flax, 15; potatoes, 250. Pop. 4,610. Price per acre: Raw lands, \$10 to \$40; improved, \$20 to \$100. Some homesteads available. Write Sec.-Treas. of Municipality, Stonewall P.O.

**ROSSER.** Area 107,380 acres, 36,490 acres cultivated. Land is rolling. Soil black loam; clay subsoil. Watered by wells 45 to 90 ft. Market at Winnipeg. Served by C.P.R. and C.N.R. Mixed farming. Wheat averages 18 bush.; oats, 40; barley, 35; flax, 18; roots, 200. Pop. 2,500, of various nationalities. Price per acre of raw lands, \$25; improved, from \$50 up. No homesteads available. Write Sec.-Treas. of Municipality, Rosser P.O.

**ST. ANDREW'S.** Area, 171,062 acres; 12,319 acres cultivated. Land is rolling, with scrub. Soil, black loam, 10 in. clay subsoil. Watered by creeks and wells, 16 to 36 ft. Served by C.P.R. Markets, Winnipeg and local. Grain and mixed farming. Wheat averages 31 bush.; oats, 90; barley, 56; flax, 18. Pop. 2,077, including Canadians, English and Americans. No homesteads available. Average price per acre of raw lands, \$20; improved, \$35. Write Bruce Campbell, Publicity Commissioner, Selkirk.

**SPRAGUE.** Area 552,960 acres, 1,712 acres cultivated in s.e. corner of province. Land about half dry and rolling; balance marshy, with fall for drainage. Soil, part sandy loam; part clay loam, 12 to 18 in., with clay subsoil. Flowing wells from 65 to 100 ft. Served by C.N.R. Mixed farming. Crops average: Wheat, 30 bush.; oats, 50; barley, 35; flax, 18; roots, 400. Pop. about 1,200, including English, Americans, French, Scandinavians and Austrians. Homesteads land available. C.N.R. Land Co. and Hudson's Bay Co. have lands for sale. Local markets at Piney, Sprague, Vassar. Write Sec. of Municipality, Pine Valley P.O.

**WHITEMOUTH.** Area 166,331 acres, 8,323 acres cultivated. Land is generally rolling, with some hills at the

north. Soil, loamy clay 2 to 4 ft. deep, more suitable for grasses and hay; watered by Whitemouth and Winnipeg Rivers and several creeks. The former rising in Whitemouth Lake, twists for 80 miles through the district and abounds with fish. Good wells 20 to 60 ft. Served by C.P.R. and G.T.P., running parallel 6 miles apart. Mixed farming is general. Leading crops: Wheat and hay. Oats, barley, peas, timothy and clover do well. Markets at Winnipeg, Kenora and Port Arthur. District is admirably adapted for dairying. Pea vine and red top timothy is the natural growth of the meadow lands. The Government takes samples of timothy, hay and clover from this district for exhibitions. Spruce timber can be bought at saw mills near the Winnipeg River at from \$13 to \$14 per M ft. Settlers can take out cordwood in the winter and get \$3.00 to \$3.25 for spruce and \$3.75 for tamarack at railway stations. If four miles of drain were put in between Winnipeg River and the C.P.R. a very fine tract of land would be opened up close to developed water powers, supplying abundant electricity. Of homesteads 100,000 acres are available. Price of improved farms from \$20 to \$30. Pop. about 2,000, including British, Germans, Swedes, many of whom came poor and are now well off. Write M. N. Tobin, Reeve, Whitemouth P.O.

### North Central District

*Area 96 miles n. and s. by 48 miles e. and w. Comprises municipalities of Langford, Lansdowne, McCreary, North Cypress, North Norfolk, Ochre River, Portage la Prairie, Rosedale, St. Francois Xavier, St. Laurent, Ste. Rose, Westbourne, Woodlands. Average crops in 1912: Wheat, 22 bush.; oats, 53; barley, 41; flax, 11; roots, 275. Pop. mixed in north, with Ontario farmers in the south. Average price of raw lands per acre, \$10 to \$25; improved farms, \$25 to \$60. Some homesteads available.*

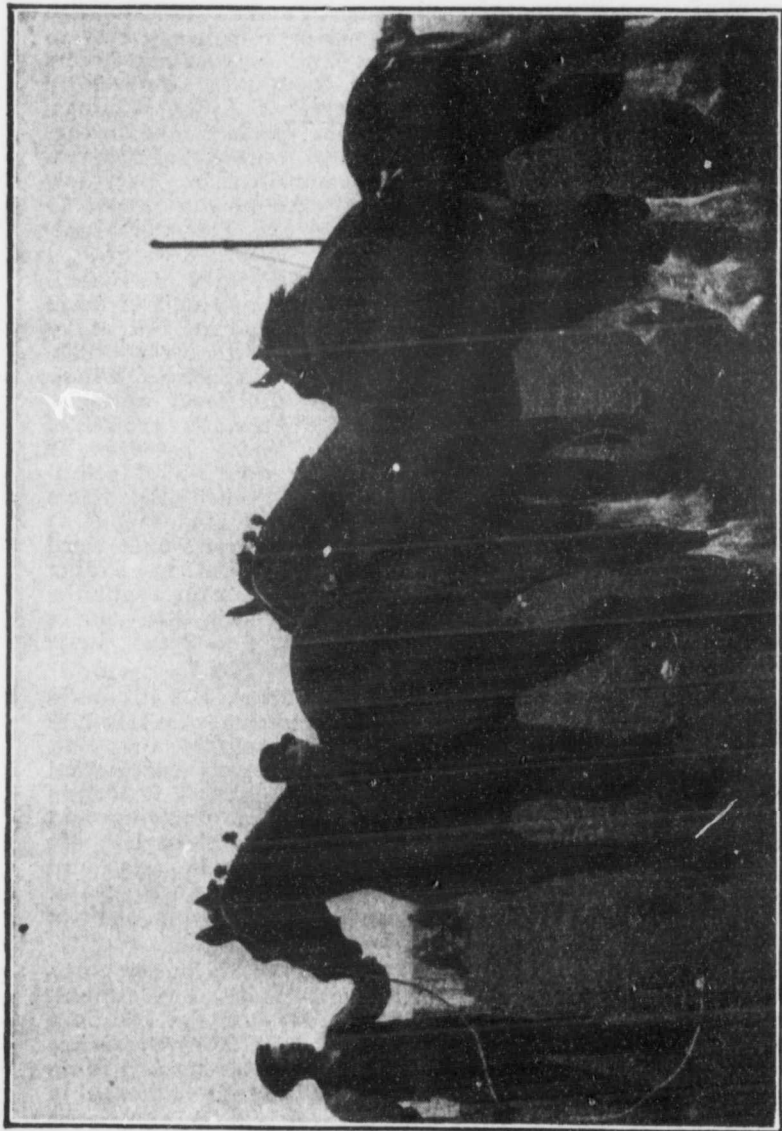
**LANGFORD.** Area 114,690 acres, 73,435 acres cultivated. Land is rolling prairie, situate on slopes approaching Riding Mts. Soil is black loam 16 to 30 in. deep. Exempt from frost. Wells 12 to 30 ft. Served by 7 lines of railway. Chiefly wheat growing. Dairying is being developed. Average crop 1911: Wheat, 22 bushels; oats, 40; barley, 35; flax, 18. Wood can be obtained from adjacent Mts. Pop. 1,250, practically all Anglo-Saxons. Few homesteads left. Average price per acre: Raw lands, \$18 to \$25; improved farms, \$25 to \$50. Write Sec. Board of Trade, Neepawa.

**LANSDOWNE.** Area 253,440 acres, 50,000 acres cultivated, comprising 11 townships. Land is rolling with lower lands well drained. Soil varies from heavy clay to sandy loam. Watered by White Mud and Grasse Rivers and smaller streams. Wells 10 to 100 ft. Served by C.P.R. and C.N.R. Local markets at Arden, Plumas, Glenella, Neepawa. Mixed farming, grain and dairying. Wheat averages 20 bushels; oats, 40; barley, 25; flax, 13. Pop. 2,600, Eastern Canadians and British. Very few homesteads available. Price per acre of raw lands, \$5 to \$40; improved, about \$40. Write Sec.-Treas. of Municipality, Arden P.O.

**McCREARY.** Area 230,400 acres, 57,600 acres cultivated. Land is level and well drained. Ranges 13 and 14 have shallow soil with stony ridges. Ranges 15 and 16 heavy black loam, 12 to 18 in. Clay subsoil, with much brush. Good water obtained at 12 to 18 ft. Markets at Winnipeg, Brandon, Neepawa, Dauphin and local markets. McCreary is a div. point on C.N.R. Abundant growth of feed makes mixed farming good. Wheat averages 22 bushels; oats, 55; barley, 43; flax, 18. Pop. 2,200, including English, Canadians, Americans and French Canadians. First prize for wheat (junior class) and gold medal at Brandon, 1911, won by McCreary district, and third for wheat (senior class). Timber plentiful in Riding Mts. Good scenery and sport. No homesteads available. Hudson's Bay Co. and C.N.R. have lands for sale. Price per acre of raw lands, \$18; improved, \$30 to \$60. Write Sec.-Treas. of Municipality, McCreary P.O.

**NORFOLK, NORTH.** Area 257,946 acres, 102,462 acres cultivated. Land varies from hilly to flat. Soil, sandy loam and clay loam. Watered by wells 10 to 70 ft. Winnipeg and local markets at Macgregor, Austin and Sidney. Served by C.P.R., C.N.R. and G.T.R., main and branch lines. Mixed farming, grain, dairying and stock. Wheat averages 18 bush.; oats, 40; barley, 30; flax, 15. Pop. 5,000, including English, Scotch, Irish and Canadians. Price per acre of raw lands, \$10 to \$15; improved, \$30 and up. No homesteads available. Write Sec.-Treas. of Municipality, Macgregor P.O.

**OCHRE RIVER.** Area 201,571 acres, 14,571 acres cultivated. Land is rolling or flat. Soil: S. of Lake Dauphin, black loam, 12 in.; clay subsoil. N. of Lake Dauphin soil is shallow and stony in places. Watered by Ochre and Turtle Rivers and streams fed by springs in Riding Mts. Wells, 20 ft. Markets at Winnipeg, Portage la



Come to Brandon and raise horses like these. See announcement on page 71 headed "Cornwallis Municipality—Brandon District—Robert E. Denny",

Prairie, Dauphin and local points. Served by C.N.R. main line and Ste. Rose branch. Mixed farming and grain growing. Wheat averages 18 bush.; oats, 55; barley, 35; flax, 12. Pop. 1,500, including Canadians and English, some French and Galicians. Hudson's Bay Co. and C.N.R. have lands for sale. Homesteads available in 8 townships. Price per acre of raw lands, \$10 to \$20; improved, \$12 to \$40. Write Sec.-Treas. of Municipality.

**PORTAGE LA PRAIRIE.** Area 432,497 acres, 190,742 acres cultivated. Land is level prairie. Soil, black loam on clay subsoil. Watered by wells 16 to 135 ft. Served by main lines and branches C.P.R., C.N.R., G.T.P., G.N.R., giving easy access to markets at Winnipeg and Fort William. Grain-growing district. Wheat averages 20 bush.; oats, 50; barley, 40; flax, 15; roots, 300. Pop. 3,665, including Canadians, Americans, English, Scotch, Irish. No homesteads available. Average price per acre of raw lands, \$10 to \$25; improved, \$45. Write Sec. Bd. of Trade, Portage la Prairie.

**ROSEDALE.** Area 207,360 acres, 60,991 acres cultivated. Land is rolling, traversed by Riding Mts. Soil, except s.e. corner, black loam, 12 in. or more; clay subsoil. Watered by streams. Wells, 10 to 50 ft. Neepawa and other local markets. Served by 50 miles of railway in the municipality. Farming, all kinds, chiefly grain. Wheat averages 20 bushels; oats, 45. Abundant fuel and timber in neighborhood. Pop. 3,000. English speaking, and Slavs in n.w. Price per acre of raw lands, \$15; improved, \$30 to \$40. Few homesteads available. C.N.R. and Hudson's Bay Co. have lands for sale. Write Sec. Bd. of Trade, Neepawa.

**WESTBOURNE.** Area 737,000 acres, 43,980 acres cultivated. Land is level, sloping gently, and well drained. Soil varies from sandy loam to heavy clay. Watered by Lake Winnipeg and several rivers. Wells 20 to 120 ft. and several rivers. Markets well served by C.N.R. main line and two branches and C.P.R. 18 stations in municipality. Mixed farming and stock raising. Wheat averages 20 bushels; oats, 60; barley, 30; flax, 16; roots yield heavily. Pop. 7,500 (increasing rapidly), including Canadians, British, Americans, Icelanders, Russians, Germans and Galicians. Big Point, on Lake Manitoba, is a summer resort. C.N.R., C.P.R., Hudson's Bay Co. and Canada N.W. Land Co. have lands for sale. A few homesteads available and more will be opened shortly. Price per acre:

Raw lands, \$8 to \$16; improved, \$30. Write Sec.-Treas. of Municipality, Gladstone P.O.

**WOODLANDS.** Area 330,472 acres, 21,984 acres cultivated. Land is flat and dry. Some good land in R. 22, elsewhere much shallow soil and stony. Watered by walls 15 to 100 ft. Markets at Winnipeg. Served by C.P.R. main line and C.N.R., 2 branches. All kinds of farming. Wheat averages 23 bushels; oats, 36; barley, 38; flax, 12. Pop. 1,850. No homesteads available. Price per acre: Raw lands, \$15 to \$20; improved, \$30 to \$50. Write Sec.-Treas. of Municipality, Woodlands P.O.

### South Central District

*Area 96 miles e. and w. by 54 miles n. and s. Comprises municipalities of Argyle, Dufferin, Grey, Lorne, Louise, Macdonald (west half), Montcalm, Morris, Pembina, Rhineland, Roblin, Roland, South Cypress, South Norfolk, Stanley, Strathcona, Thompson, Victoria. Settlement is fairly thick. Average crops in 1912: Wheat, 23 bushels; oats, 53; barley, 40; flax, 13; roots, 250. Practically no homesteads available. Average price per acre of raw lands, \$15 to \$40; improved farms, \$25 to \$50.*

**ARGYLE.** Area 186,058 acres, 85,485 acres cultivated. Land is rolling. Soil, 18 ins. of black loam with clay subsoil. Wells average 25 ft. Good railway transportation. Average crops in 1911: Wheat, 20 bush.; oats, 60; barley, 35; flax, 12. Local markets at Baldur, Greenway, Glenora and Malin. Pop. 3,300, including Canadians, English and Icelanders. Land mostly taken up. Very few homesteads available. Price of raw lands, \$20; improved farms, \$25 to \$30. Write Sec.-Treas. of Municipality, Baldur P.O.

**DUFFERIN.** Area 218,880 acres, 116,150 acres cultivated. Land is flat. Soil: Township 7 is sandy, elsewhere is black and clay loam, averaging 2 ft. with clay subsoil. Watered by Boyne River and Tobacco Creek. Wells 14 to 125 ft. Served by C.P.R., C.N.R. and G.N.R.; 3 trains to Winnipeg daily. Leading crops: Wheat, oats, barley, flax. Pop. about 7,000, including Canadians, Scotch and Americans. District won first prize for wheat in competition with the province in 1910. Write Sec. Bd. of Trade, Carman.

**LORNE.** Area 206,640 acres, 73,035 acres cultivated. Land is mostly rolling. Soil, black and clay loam, 18 ins. Watered by wells, 20 ft. Well wooded and picturesque,

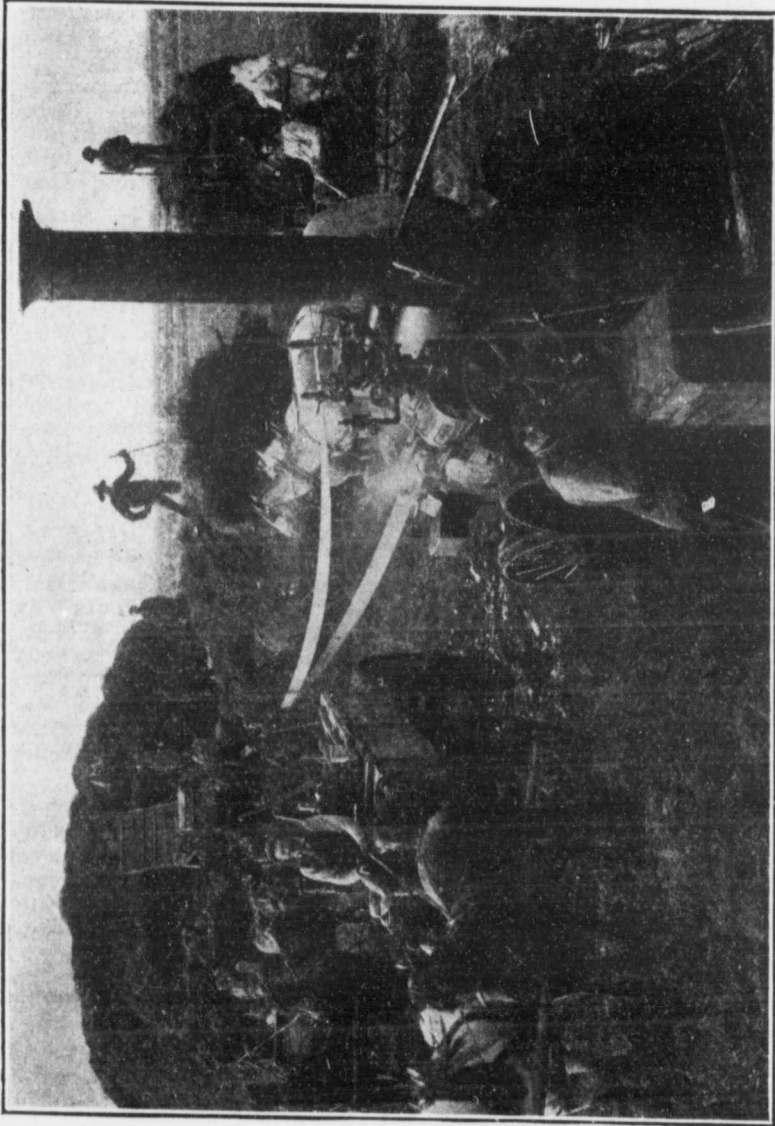


with several lakes. Markets at Winnipeg, 84 miles; Brandon, 87 miles, via C.N.R., and Somerset, Cardinal, Altamont and Swan Lake. Served by C.N.R. Farming—grain, cattle, hogs, dairying. Wheat averages 22 bush.; oats, 50; barley, 30. Pop. 6,000, including Canadians (English and French), British and Belgians. Price per acre: Raw lands, \$20; improved, \$30. No homesteads available. Provincial Govt. has lands for sale, also Hudson's Bay Co. and Canada N.W. Land Co., Winnipeg. Write Sec. Bd. Trade, Somerset.

**LOUISE.** Area 229,908 acres, 152,124 acres cultivated. Land is rolling. Soil, mostly black loam, 1½ to 2 ft. deep; clay subsoil; some light soil. Townships 1 and 2 have especially fine land and buildings. Watered by Pembina River and creeks. Wells 15 to 100 ft. Local markets at Pilot Mound, Crystal City and Clearwater. Mixed farming and grain; some stock raising. Wheat averages 20 bush.; oats, 40; barley, 20. Pop. 2,200, all British. Price per acre: Raw lands, \$23; improved, \$32. No homesteads available. Write Clerk of Municipality, Clearwater P.O.

**MACDONALD.** Area 273,853 acres, 135,718 acres cultivated. Land is level, or slightly rolling. Watered by La Salle and Scratching Rivers. Wells 20 to 30 ft. Soil is heavy clay, except along rivers, which is good black loam. Weeds are prevalent. Local markets at Winnipeg, La Salle and Starbuck. Served by C.N.R. and C.P.R. Farming—grain, cattle and dairying. Wheat averages 22 bush.; oats, 27; barley, 31; flax, 15. Pop. 3,000, including English, French, Germans and a few Scandinavians. Price per acre: Raw lands, \$25; improved, \$50. No homesteads available. Write Municipal Treasurer, Sanford P.O.

**MORRIS.** Area 246,049 acres, 103,525 acres cultivated. Land flat; soil, 18 inches of black loam on clay subsoil; very rich, but requires the right weather; no stone, rock or scrub. Watered by Morris and Red Rivers. Wells average 70 ft. Average crops: Wheat, 25 bush.; oats, 70; barley, 40; flax, 12; roots, 400. Stock raising and dairying. Served by C.P.R., G.N.R., and N.P.R. Markets, local and at Winnipeg, 40 miles. Less than half of the district is under cultivation, one-third of the land being held by non-residents. Pop. about 4,000, including English, Germans and French. Av. price per acre: Raw lands, \$20 to \$25; improved farms, \$25 to \$40. Write the Secretary-Treasurer, Town of Morris.



Threshing, West of Portage la Prairie. See description of district on page 53

NO  
cu  
sa  
he  
A  
by  
w  
ay  
to  
In  
la  
N  
C  
fo  
RH  
v  
s  
V  
S  
1  
3  
I  
f  
i  
ST

**NORFOLK, SOUTH.** Area 177,280 acres, 74,311 acres cultivated. Land is undulating. Soil varies, comprising sandy, black and clay loam. Excellent land near Treherne, well timbered, with good water. Watered by Assiniboine River and creeks. Wells about 14 ft. Served by C.P.R. and C.N.R. Local markets at Treherne, Rathwell, Notre Dame. Grain and mixed farming. Wheat averages 17 bush.; oats, 45; barley, 30; flax, 18; potatoes, 300. Pop. about 3,000, including English, Scotch, Irish, Canadians and a few French. Price per acre of raw lands (poor quality), \$5 to \$20; improved, \$20 to \$50. No homesteads available. C.P.R. Co., Hudson's Bay Co. and Canada N.W. Land Co., Winnipeg, have lands for sale. Write Sec.-Treas. of Municipality, Treherne P.O.

**RHINELAND.** Area 276,480 acres, 177,657 acres cultivated. Land flat and well drained. Soil, western part sandy black loam; eastern, black loam with clay subsoil. Watered by wells (average depth 16 ft.) and ponds. Served by C.P.R. Farming mostly grain. Wheat, in 1911 (a dry season), averaged 20 bush.; oats, 40; barley, 30; flax, 15. No dairy cattle. An excellent climate. Musk and water melons grow freely and are fed to pigs. Pop. about 8,000, including many Germans, Mennonites. Local markets at Gretna, Altona, Plum Coulee, Rosenfeld, Hasket, Winkler. Price per acre: Raw lands, \$20; improved farms, \$30 to \$50. No homesteads available. Write Sec.-Treas. of Municipality, Altona P.O.

**STANLEY.** Area 160,000 acres, 73,627 acres cultivated. Land partly wooded; about 10,000 acres prairie; some hilly, including Pembina Mts., which are interspersed with well-wooded valleys. Soil partly clay loam, partly sandy loam, mostly with clay subsoil. Watered by several creeks lined with trees. Served by C.P.R. and G.N.R., with C.N.R. 1 mile from north boundary. Excellent roads, good markets. Wells average 18 ft. Mixed farming. Cattle and hogs are purchased by buyers on the farms. Cream is shipped to Winnipeg. Average crops in 1911: Wheat, 18 bush; oats, 50; barley, 35; flax, 14; roots, 200. Corn for feeding does well. No summer frosts. Pop. 7,000, including Canadians, Scotch, Irish, English, Germans, Mennonites, Scandinavians, Icelanders. Most farms are protected by a bluff. Lands have been held by speculators and tenants. No raw lands available. Improved farms average \$30 per acre. Write Pres. Bd. Trade, Morden.

**STRATHCONA.** Area 111,068 acres, 45,816 acres cultivated. Land is rolling and dry. Soil black loam, 8 ins.; clay subsoil. Watered by small sloughs. Wells 10 to 30 ft. Local markets at Belmont, Hilton and Ninette. Served by C.N.R. Mixed farming. Wheat averages 18 bush.; oats, 24; barley, 28; flax, 10. Pop. 1,263, including Canadians, English and Scotch. Price per acre: Raw lands, \$10 to \$20; improved, \$25 to \$40. No homesteads available. Write Sec.-Treas. of Municipality, Belmont P.O.

**THOMPSON.** Area 126,720 acres, 7,200 acres cultivated. Land is rolling. Soil is vegetable mould washed down in past ages from the Pembina Mts., 2 miles from Miami. Watered by creeks. Wells 18 to 30 ft. Farming, mixed. Served by C.N.R. Crops average 20 bush.; oats, 40; barley, 35; flax, 18. Local markets at Miami and Rosebank. Pop. 3,230, chiefly Canadians. Average price of raw lands, \$25; improved farms, \$40. Write Sec. of Municipality, Miami P.O.

**VICTORIA.** Area 116,480 acres, 60,000 acres cultivated. Land is rolling. Soil, black loam, 12 ins. deep. Tps. 8 and 9, Rgs. 11 and 12, and most of Tp. 7, R. 12, are very sandy. The rest is very good land. Clay subsoil. Watered by Assiniboine River, small streams and lakes. Wells average 18 ft. Served by C.P.R. Grain and mixed farming. Wheat averages 18 bush.; oats, 50; barley, 45; flax, 15. Markets at Winnipeg, Holland and Cypress River. Pop. about 5,000, including English, French and Belgians. Price per acre: Raw lands, \$20; improved farms, \$30 to \$35. No homesteads available. Provincial Govt. has cheap lands for sale. Write Mgr. Union Bank, Holland P.O.

### North Western District

*Area 78 miles e. and w. by 144 miles n. and s. Comprises municipalities of Archie, Birtle, Blanchard, Boulton, Clanwilliam, Dauphin, Ellice, Gilbert Plains, Grandview, Hamiota, Harrison, Miniota, Minitonas, Minto, Mossey River, Odonah, Rossburn, Russell, Saskatchewan, Shell River, Shellmouth, Shoal Lake, Silver Creek, Strathclair, Swan River. Average crops in 1912: Wheat, 20 bush.; oats, 55; barley, 43; flax, 14; roots, 175. Well settled at south with Ontario farmers; in northern part chiefly English. Some homesteads available. Average price per acre of raw lands, \$8 to \$15; improved farms, \$15 to \$45.*

ARC

La

pa

lo

ru

de

C.

Lo

to

ra

So

ha

ta

C

in

W

BLA

v:

W

G

fa

b

p

o

V

R

CL

v

s:

V

b

v

fi

5

A

t

7

DA

t

l

f

i

c

t

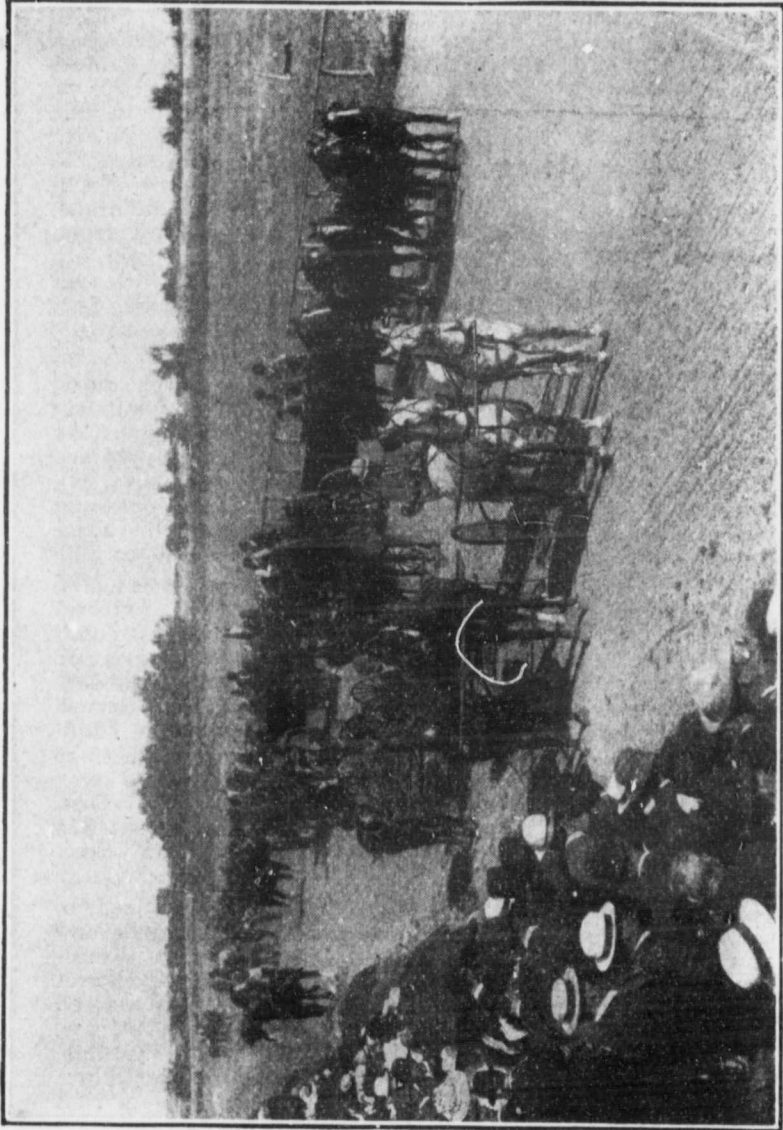
t

**ARCHIE.** Area 138,240 acres, 38,902 acres cultivated. Land is slightly rolling, with some hay sloughs. Soil in part of n.e. portion is sandy loam. All the remainder black loam 1 to 2½ ft. deep on clay subsoil, drained by coulees running into Assiniboine River. Wells 12 to 60 ft. deep. Served by Kirkella branch C.P.R., main line C.P.R., Virden-McAuley branch C.P.R. and G.T.P. Leading crops: Wheat averages 20 to 38 bush.; oats, 40 to 80; barley, 25 to 40; flax, 12 to 18. Some stock-raising and dairying. Pop. 850, including Canadians, Scotch, English, Irish and Swedes. Damage by frost, hail and drought is almost unknown. Water power obtainable from Assiniboine River, Birdtail Creek, Beaver Creek, Sisson's Creek. Price per acre: Raw lands, \$15; improved farms, \$25 to \$35. No homesteads available. Write Sec.-Treas. of Municipality, McAuley P.O.

**BLANCHARD.** Area 138,240 acres, 53,924 acres cultivated. Land is rolling. Soil black loam on clay subsoil. Watered by Oak River and wells 12 to 40 ft. Served by G.T.P., C.P.R. and C.N.R. Good local markets. Mixed farming and grain. Wheat averages 25 bush; oats, 60; barley, 50; flax, 25. Pop. 1,200, chiefly British; an old and prosperous settlement. No homesteads available. Price of raw lands per acre, \$15 to \$20; improved, \$30 to \$40. Write the Reeve of Municipality, Bank of B.N.A., Oak River.

**CLANWILLIAM.** Area 70,761 acres, 5,604 acres cultivated, comprising 4 townships. Land is rolling. Soil sandy loam and clay loam 9 to 18 in. Clay subsoil. Watered by streams and lakes. Wells 12 to 25 ft. Served by C.P.R. and C.N.R. Local markets at Erikson, Clanwilliam and Minnedosa. Mixed farming, subject to frosts, mostly oats grown. Wheat averages 20 bush.; oats, 50; barley, 30. Pop. about 1,000, chiefly Scandinavians. Average price per acre: Raw lands, \$12; improved, \$15 to \$20. Several homesteads available. Write Sec.-Treas. of Municipality, Minnedosa P.O.

**DAUPHIN.** Area 260,445 acres, 67,309 acres cultivated, in the northwest section between and round the Riding and Duck Mountains, skirting Lakes Winnipeg and Winnipegosis, and including Lake Dauphin. The whole district is more or less thickly timbered, varying from scattered clumps of willows bordering the Assiniboine in the s.w. to groves of poplar and coniferous forests on the mountains. The country is well drained by the Vermilion, the Ochre, the Turtle, the Valley and Wilson Rivers. Soil is rich



The Agricultural Show at Killarney. See page 25

all  
C.  
be  
wh  
du  
lar  
ex  
M  
(1  
mi  
ov  
pe  
bu  
W  
ELL  
La  
C  
is  
e.  
so  
sn  
La  
by  
ag  
1,  
ho  
an  
pe  
Se  
GIL  
cu  
la  
cl  
W  
an  
av  
ob  
to  
al  
A  
\$  
a  
P  
GR  
L  
L

alluvial loam. North of the Valley River and east of the C.N.R. it is apt to be shallow; along the rivers it is the very best. A fine and sure mixed farming district. Crops of wheat, barley, oats, maize, alfalfa and ordinary farm produce are abundant. Settlers having no timber on their lands may obtain permits to cut dry timber for fuel to the extent of 25 cords for 25c. in the forest reserves on Riding Mountains (1,535 sq. miles), and on Duck Mountains (1,450 sq. miles). In 1912 this district had over three million acres not under cultivation. Pop. about 36,000, over 6,000 homesteads open for entry, and average grain per acre: Wheat, 20.1 bush.; oats, 43.4 bush.; roots, 245 bush.;  $3\frac{1}{2}$  million pounds of fish were shipped to market. Write W. G. Langdon, Sec. Board of Trade, Dauphin.

**ELLICE.** Area 137,520 acres, 46,525 acres cultivated. Land is flat, partly rolling and dry. Soil n. of Beaver Creek and w. of Assiniboine is sandy, all e. of Assiniboine is good wheat land, especially free from summer frosts; on e. bank sandy loam and clay loam, 2 to 3 ft., on clay subsoil. Watered by Assiniboine and Qu'Appelle Rivers and small creeks. Wells average 12 ft. Local markets at St. Lazare, Foxwarren, Binscarth, Birtle, Welwyn. Served by G.T.P. and C.P.R. Mixed farming. Wheat averages 25 bush.; oats, 65; barley, 45; flax, 20. Pop. about 1,000, including English and French Canadians. Few homesteads available. Hudson's Bay Co., C.P.R. Co. and Canada N.W. Land Co. have lands for sale. Price per acre of raw lands, \$10; improved, \$25 to \$40. Write Sec.-Treas. of Municipality, St. Lazare P.O.

**GILBERT PLAINS.** Area 215,040 acres, 64,873 acres cultivated. Land is rolling. 90% good agricultural land. Soil varies. Sandy, black and clay loam; mostly clay subsoil. Watered by rivers and numerous creeks. Wells at 10 to 50 ft. Served by C.N. Ry. Mixed farming and dairying, subject to frost. An oat country. Wheat averages 22 bush.; oats, 45; barley, 35; flax, 15. Firewood obtainable at Riding Mts. to the south and Duck Mts. to the north. Water power on Valley River. Pop. about 4,000, including Canadians, English, Scotch, Irish, Americans and Galicians. Average per acre of raw lands, \$10 to \$20; improved farms, \$20 to \$50. Few homesteads available. Write Sec.-Treas. of Municipality, Gilbert Plains P.O.

**GRANDVIEW.** Area 276,480 acres, 54,000 acres cultivated. Land slightly rolling, and well drained. Soil black loam, 12 in.; clay subsoil. Watered by Valley River, Silver

Creek, Wilson Creek. Wells 20 ft. Served by C.N.R. main line. Local market at Grandview. Mixed farming, grain predominating. Wheat averages 22 bushels; oats, 60; barley, 40; flax, 15. Pop. 1,370, Canadians. Water power on Valley River. Few homesteads available. Price per acre of raw lands, \$15; improved, \$25. Write Sec. of Board of Trade, Grandview.

**HAMIOTA.** Area 137,600 acres, 82,515 acres cultivated. The soil is black loam, with heavy clay subsoil. All the land is taken up. There are no homesteads. Wheat averages 20 to 25 bush.; oats, 50 to 60 bush.; barley, 35 to 45 bush. per acre. Served by C.P.R. and C.N.R. Pop. 1,253. Price of unimproved land, \$20; improved land, \$25 to \$35 per acre. Write Mayor, Hamiota, Man.

**MINIOTA.** Area 199,680 acres, 72,790 acres cultivated. Land, rolling prairie. Soil, black loam and yellow clay subsoil. Watered by Assiniboine River and tributaries. Wells 20 to 50 ft. Stock farming and grain growing. Served by 4 railways. Average crops: Wheat, 25 bush.; oats, 50; barley, 40; flax, 20. Markets at Miniota, Crandell, Isabella, Beulah, and Arrow River. Few homesteads available. Price per acre: Improved farms, \$30 to \$40. Pop. 2,000, including English, Canadians, Scotch and Irish. Write Sec.-Treas. of Municipality, Miniota P.O.

**MINITONAS.** Area 291,840 acres, 17,412 acres cultivated. Land is rolling, with some patches of marsh. Soil sandy in places, some black loam, with clay subsoil. Some gravelly ridges. Watered by wells 8 to 12 ft. Served by C.N.R. Local markets. Crops chiefly grain, but district is better suited for mixed farming. Wheat averages 20 bush.; oats, 60; barley, 40; roots and hay do well. Pop. 1,100, including Canadians, English and Scotch. Many good homesteads available. Price per acre: Raw lands, \$5 to \$10; improved, \$10 to \$25. Write Municipal Clerk, Minitonas P.O.

**MINTO.** Area 92,160 acres, 16,985 acres cultivated. Land is rolling. Soil, black loam, 18 in. deep; clay subsoil. Wood plentiful. Watered by river, streams and small sloughs.. Wells from 15 to 100 ft. Mixed farming. Wheat averages 23 bush.; oats, 50; barley, 28. Price per acre of raw lands, \$18; improved, \$25. Pop. 825. No homesteads available. Write Sec.-Treas. of Municipality, Minnedosa P.O.

MOSS

vate

6 to

by

ft.

Win

grai

Few

Huc

age

che

or I

ODAI

Lan

blac

Loc

Cor

Mi:

bar

ing

stea

imp

Mi

ROSI

Lan

in e

lak

at

Gr

bu

oat

Au

ha

Pr

\$4

\$4

\$4

\$4

\$4

\$4

\$4

\$4

\$4

\$4

\$4

\$4

\$4

\$4

\$4

\$4

\$4

\$4

\$4

\$4

\$4

\$4

\$4



**MOSSEY RIVER.** Area 276,480 acres, 11,345 acres cultivated. Land is flat; in parts marshy. Soil, black loam, 6 to 8 in., on clay subsoil. Some gravelly ridges. Watered by Fishing, Fork and Mossey Rivers. Wells about 20 ft. Markets at Winnipeg and villages of Fork River and Winnipegosis. Served by C.N.R. Mixed farming and grain growing. Pop. about 2,000, English and Galicians. Few homesteads available; some may be opened later. Hudson's Bay Co. and C.N.R. have lands for sale. Average price per acre: Raw lands, \$12; improved farms cheap. Write Sec.-Treas. of Municipality, Fork River, or F. B. Lacey, Oak Brae.

**ODANAH.** Area 92,160 acres, 31,611 acres cultivated. Land is rolling, broken in places by small lakes. Soil, black loam. Watered by streams. Wells 20 to 150 ft. Local markets at Minnedosa, Franklin, Moore Park, Cordova and Rapid City. Served by C.N.R. and C.P.R. Mixed farming. Wheat averages 25 bush.; oats, 55; barley, 40; flax, 18; potatoes, 400. Pop. 1,300, including English, Scotch, Americans and Swedes. No homesteads available. Price per acre of raw lands, \$15 to \$20; improved, \$25 to \$50. Write Sec.-Treas. of Municipality, Minnedosa P.O.

**ROSSBURN.** Area 121,740 acres, 19,278 acres cultivated. Land is rolling. Soil, sandy loam, 10 in., on clay subsoil, in east, and black loam, heavy soil in west. Watered by small lakes and streams. Wells 10 to 100 ft. Local markets at Rosburn, Roach and Vista. Served by C.N.R. Grain growing and stock raising. Wheat averages 25 bush.; barley, 45; oats, 60; potatoes thrive; mostly oats grown. Pop. 2,500, including English, Irish, Scotch, Austrians and Galicians. C.N.R. and Hudson's Bay Co. have lands for sale. Very few homesteads available. Price per acre of raw lands, \$8 to \$25; improved, \$25 to \$40. Write Sec.-Treas. of Municipality, Rosburn P.O.

**SASKATCHEWAN.** Area 132,480 acres, 57,589 acres cultivated. Land is rolling. Soil, black loam, 1 to 2 ft.; clay subsoil. Watered by Little Saskatchewan River and ponds. Wells 20 to 100 ft. Local markets at Newdale, Basswood and Pettapiece, Rapid City and Minnedosa. Served by C.P.R. and C.N.R. Mixed farming. Specially good district for oats. Wheat averages 25 bush.; oats, 75. Pop. 1,350. Price per acre of raw lands, \$15 to \$20; improved, \$20 to \$30. No homesteads available. Write Sec.-Treas. of Municipality, Rapid City.

**SHELLMOUTH.** Area 138,240 acres, 22,696 acres cultivated. Land is rolling. Soil, principally clay, with a little gravel. Watered by Assiniboine and Shell Rivers. Wells 18 to 30 ft. Mixed farming. Crops average: Wheat, 30 bush.; oats, 65; barley, 40; flax, 24; roots, 300. Pop. 350, includes Canadians, with some Galicians. Few homesteads available. Water power at Shell River. Fine scenery on river banks. Write the Reeve of Municipality, Assessippi P.O.

**SHELL RIVER.** Area 190,720 acres. Land is flat or slightly rolling, lying in valley between Assiniboine and Shell Rivers. Watered by creeks, and wells 15 to 30 ft. Soil, black loam, 2 to 3 ft.; clay subsoil. Market at Winnipeg. Served by C.N.R. main line. Farming—grain, mixed, and dairying. Wheat averages 20 bush.; oats, 45; barley, 20; flax, 10. Pop. 4,000, including Canadians and Americans. About 400 quarter sections available for homesteads. Average price per acre of raw lands, \$10 to \$15; improved, \$15 to \$20. Write F. J. Newton, or Sec.-Treas. of Municipality, Roblin P.O.

**SHOAL LAKE.** Area 147,746 acres, 46,559 acres cultivated. Land is rolling. Soil, sandy loam, 12 in.; clay subsoil; very good oat land. Watered by lakes and creeks. Wells 30 to 100 ft. Local markets at Shoal Lake, Oakburn, and Kelloe. Served by C.P.R. and C.N.R. Mixed farming. Wheat averages 28 bush.; oats, 65; barley, 50; roots, 200. Price per acre of raw lands, \$15; improved, \$30. Pop. 1,500. No homesteads available. Write Sec.-Treas. of Municipality, Shoal Lake P.O.

**SILVER CREEK.** Area 120,229 acres, 31,766 acres cultivated. Land is rolling, with bluffs and sloughs. Soil, black loam 8 to 24 in. deep; clay subsoil. Watered by small streams and lakes. Wells 15 to 40 ft. Mixed farming and grain. Wheat averages 25 bush.; oats, 60; barley, 35. Subject to frosts, mostly oats grown; good cattle country. Served by C.N.R. and C.P.R. Local markets at Angusville and Silverton. Pop. about 1,000, including Canadians, British and Galicians. Price per acre: Raw lands, \$12 to \$20; improved, up to \$30. Hudson's Bay Co., Winnipeg, has lands for sale. No homesteads available. Write Sec.-Treas. of Municipality, Russell P.O.

**STRATHCLAIR.** Area 124,082 acres, 45,905 acres cultivated. Land is rolling. Townships 17 to 21 may be termed sandy; balance is black loam mixed with clay, 6 in. deep. Served by C.P.R. and C.N.R. Good wells at from

15  
O  
O  
S  
a  
fa  
E  
U  
SW  
vi  
lc  
21  
K  
C  
5  
st  
p  
R

A  
mu  
Dal  
ston  
hea  
191  
200  
frot  
pri  
to

AL

AF

15 to 20 ft. Some small lakes. Mixed farming is general. Owing to high altitude subject to frost. Leading crops: Oats, barley and potatoes. Markets at Strathclair, Shoal Lake, Newdale and Winnipeg. No homesteads available. Price of raw lands, \$15 to \$20; improved farms, \$25 to \$40. Pop. about 1,200, including Scotch, English, Irish, Galicians and Canadians. Write Jno. Underhill, Reeve, Strathclair P.O.

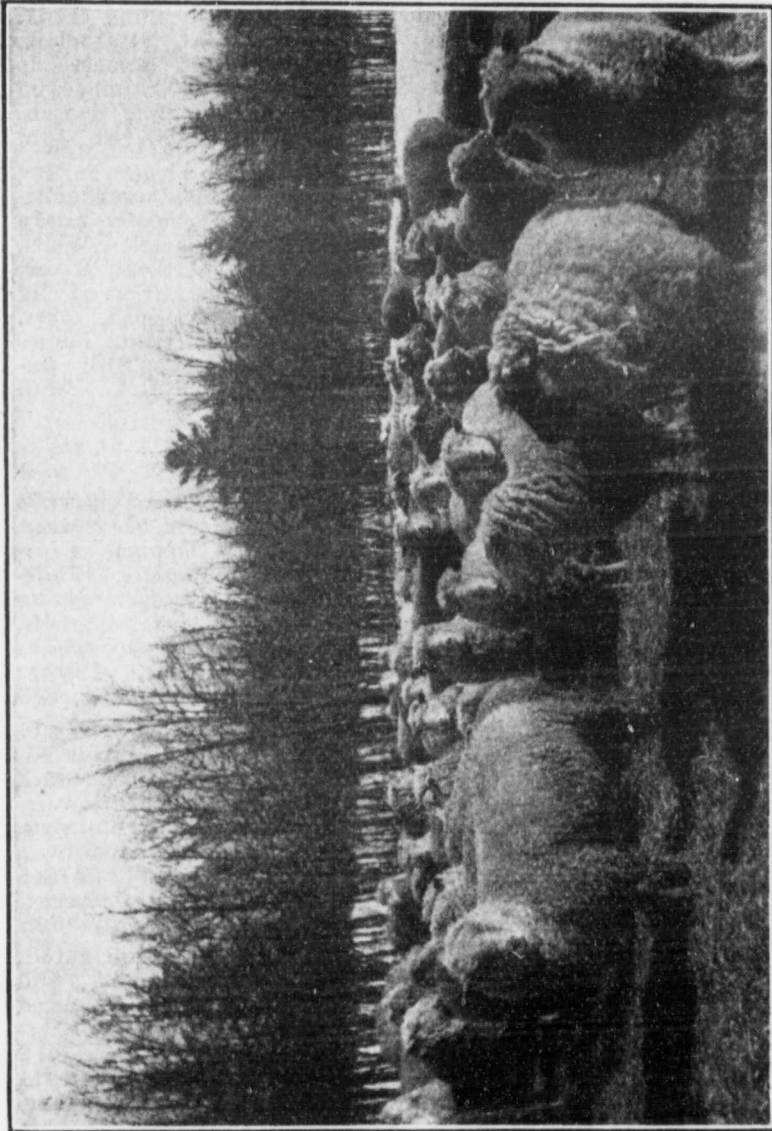
**SWAN RIVER.** Area 415,000 acres, 60,000 acres cultivated. Land is rolling. Soil varies, but mostly sandy loam. Watered by Swan and Woody Rivers. Wells, 20 ft. Mixed farming. Local markets at Swan River, Kenville and Durban. Subject to frost. Served by C.N.R. Crops, 1911: Wheat averaged 25 bush.; oats, 50; barley, 40; roots, 300. Pop. 2,500. Some homesteads available. Average price of raw lands, \$15; improved farms, \$30. Write H. R. Harley, B.L.A., Swan River P.O.

### South Western District

*Area 84 miles e. and w. by 72 miles n. and s. Comprises municipalities of Albert, Arthur, Brenda, Cameron, Cornwallis, Daly, Edward, Elton, Glenwood, Morton, Oakland, Pipestone, Riverside, Sifton, Turtle Mountain, Wallace, Whitehead, Whitewater, Winchester, Woodworth. Average crops in 1912: Wheat, 23 bush.; oats, 52; barley, 40; flax, 14; roots, 200. Settled fairly thickly, chiefly by good class of settlers from Ontario. Practically no homesteads available. Average price per acre of raw lands, \$12 to \$25; improved farms, \$20 to \$50.*

**ALBERT.** Area 184,320 acres, 78,408 acres cultivated. Situated in the southwest corner of province. Land dark loam; clay subsoil; especially adapted for wheat, averaging 20 bushels per acre. Abundant growth of grass. Good water plentiful. Pop. 850. Cultivated land from \$18 to \$25 per acre; uncultivated land from \$12 to \$18 per acre. Write Jas. McLaren, Reeve, Albert Crescent, Man.

**ARTHUR.** Area 184,320 acres, 117,502 acres cultivated. Land is flat, traversed by creeks, with steep banks. Soil varies from sandy loam to clay loam, 6 to 24 ins. Watered by Souris River, creeks and wells (average 25 ft.). Markets at Brandon and Winnipeg. Served by C.P.R., 2 branches. Mixed farming and grain growing. In 1911 (a poor season), wheat averaged 18 bush.; oats, 30; bar-



The Sheep Industry is not Developed as it Ought to Be. See page 12

ley,  
avail  
prov  
P.O.

### BREN

Land  
ins.;  
wells  
ural  
Subj  
Delc  
2 br  
ing  
barl  
Ang  
Pric  
\$40.  
Nap

### CAM

Land  
Soil  
Wel  
ing.  
ney  
mil  
bus  
hor  
acre  
Tre

### COR

vat  
bla  
are  
Ri  
cip  
34  
C.  
Mi  
oa  
the  
Th  
Ex  
un  
Br  
70  
W

ley, 20. Pop. about 1,200, Canadians. No homesteads available. Price per acre: Raw lands, \$12 to \$20; improved, \$40. Write Sec.-Treas. of Municipality, Melita P.O.

**BRENDA.** Area 184,320 acres, 138,240 acres cultivated. Land is rolling and nearly all dry. Soil, black loam, 12 ins.; clay subsoil. Tp. 4, R. 25, is sandy. Watered by wells 25 to 40 ft. In Tps. 1 and 2 water is scarce. Natural gas has been struck here and is used for lighting, etc. Subject to hail. Local markets at Napinka, Medora, Deloraine, Goodlands and Waskada. Served by C.P.R., 2 branches. Farming, chiefly grain, some mixed; dairying and cattle. Wheat averaged 18 bush.; oats, 40; barley, 35 in 1911 (a poor season). Pop. 2,700, including Anglo-Saxons and Danes. No homesteads available. Price per acre: Raw lands, \$28 to \$30; improved, \$32 to \$40. Write the Reeve, or Sec.-Treas. of the Municipality, Napinka.

**CAMERON.** Area 184,320 acres, 110,664 acres cultivated. Land chiefly rolling; in parts hilly; occasional marshes. Soil, sandy north of Souris River; black loam at south. Wells 10 to 180 ft. Farming, chiefly grain, some dairying. Served by C.P.R. and C.N.R., which meet at Hartney. Local markets at Winnipeg, 160 miles; Brandon, 40 miles, and local stations. Average crops: Wheat, 20 bush.; oats, 35; barley, 30; flax, 15; roots, 200. Few homesteads available. Pop. 1,300. Average price per acre: Raw lands, \$30; improved farms, \$45. Write Sec.-Treas. of Municipality, Hartney P.O.

**CORNWALLIS.** Area 118,970 acres, 62,716 acres cultivated. Six townships. Land is rolling. Soil, mostly black loam on clay subsoil. Townships 9 and 10, R. 17, are gravelly. Watered by Assiniboine and Little Souris Rivers and Willow Creek. Wells 18 to 40 ft. The municipality includes the city of Brandon (pop. 15,000), and 346 passenger and 478 freight trains weekly on C.P.R., C.N.R., G.N.R., and G.T.P., reach other markets. Mixed farming and grain. Wheat averages 20 bush.; oats, 60; barley, 40; flax, 15; potatoes, 300. Some of the best cattle and horses in the West are bred here. The champion steer of the 1912 International Live Stock Exposition at Chicago was reared in this district; see under "Agriculture." Pop. of district, 1,000 outside Brandon. No homesteads or raw lands available. Pop. 700. Price per acre of improved farms, \$30 to \$60. Write Sec.-Treas. of Municipality, Brandon P.O.

**DALY.** Area 137,193 acres, 80,000 acres cultivated; an old settlement. Land is rolling. Soil varies from light sandy loam to heaviest clay, depth 2 ft. Subsoil chiefly clay. Watered by Assiniboine, Oak and Little Saskatchewan Rivers, and numerous creeks and springs. Wells from 20 to 50 ft. Grain growing and mixed farming. Average crops: Wheat, 25 bush.; oats, 50; barley, 60. Very heavy root crops. The municipality is spending \$10,000 a year on roads. Local markets at Carnegie, Wheatland and Bradwardine. Numerous prizes have been won at exhibitions. No homesteads available. Price per acre: Raw lands, \$25; improved, \$35. Pop. 1,010, including Canadians, Scotch, English, Irish and a few Galicians. Write Sec.-Treas. of Municipality, Lothair P.O.

**EDWARD.** Area 184,320 acres, 85,886 acres cultivated. Land is rolling, with level stretches. Soil varies; sandy loam, black loam and clay loam is found, with clay subsoil; a few gravel streaks. Watered by creeks and wells from 12 to 40 ft. Farming, chiefly grain, some dairying. Served by three railways. Telephone system throughout. Local markets at Pierson, Lyleton, Elva and Tilston. Average crops: Wheat, 15 bush.; oats, 30; barley, 25; flax, 14; roots, 300. First prize for wheat at Chicago Exhibition. Pop. of 2,000, chiefly British or Canadians; a few Germans and Swedish-Americans. No homesteads. Price per acre: Raw lands, \$10 to \$20; improved farms, \$20 to \$40. Write Sec. of Municipality, Pierson P.O.

**ELTON, NORTH BRANDON DISTRICT.** Area 137,491 acres, 95,541 acres cultivated. Land is slightly rolling. Soil, clay loam 12 ins., clay subsoil. Watered by a few springs. Wells 12 to 90 ft. Markets at Brandon and Winnipeg. Served by G.T.P., C.P.R., C.N.R., main lines and branches. Mixed farming, grain and horses. Wheat averages 20 bush.; oats, 50; barley, 35. Prizes won at Brandon Exhibition, 1910-11, for horses and grain. Pop. 1,500, including Canadians, English and Scotch. No homesteads available. A little raw land for sale at \$20 to \$25 per acre; improved farms, \$30 to \$60. Write Sec.-Treas. of Municipality, Forrest Station P.O.

**MORTON.** Area 276,480 acres, 121,007 acres cultivated; an old settlement. Land is rolling. Soil, black loam, 6 to 12 ins., on clay subsoil. Watered by 5 streams from Turtle Mt. Township 1 in Turtle Mt. is hilly. Wells 18 to 40 ft. Served by C.P.R., C.N.R. and G.N.R. Leading crops: Wheat averages 18 bush.; oats, 40; bar-

ley  
lish  
is  
pe  
av  
M  
OAK  
La  
TI  
W  
cr  
an  
C  
in  
40  
di  
at  
\$  
B  
PIP  
L  
cl  
C  
a  
V  
P  
su  
la  
P  
V  
SIF  
L  
t  
s  
a  
V  
a  
c  
a  
t  
l  
:

ley, 35; flax, 15. Pop. 2,000, including Canadians, English, Scotch and Irish. Among the lakes of Turtle Mt. is a summer resort, with good fishing. Average price per acre of improved farms, \$25 to \$50. No homesteads available. No raw lands for sale. Write Sec.-Treas. of Municipality, Boissevain, P.O.

**OAKLAND.** Area 137,445 acres, 86,612 acres cultivated. Land is slightly rolling. Soil, sandy loam in n.e. corner. The rest, black loam, 1½ to 3 ft. Friable clay subsoil. Watered by Assiniboine and Souris Rivers and numerous creeks. Wells 15 to 70 ft. Local markets at Wawanesa and Rounthwaite on C.N.R., and Methven, Nesbitt and Carroll on C.P.R. Served also by G.N.R. Grain growing and horse raising. Wheat averages 20 bush.; oats, 40; barley, 28; flax, 21. Pop. 3,100, including Canadians, English, Scotch and Irish. No homesteads available. Price per acre: Raw lands, \$15 to \$30; improved, \$25 to \$40. Write Sec.-Treas. of Municipality, P.O. Box 26, Wawanesa.

**PIPESTONE.** Area 276,480 acres, 141,072 acres cultivated. Land varies from flat to hilly. Soil, from sandy loam to clay loam, on sand-clay subsoil. Watered by Pipestone Creek and others. Wells 8 to 100 ft. Served by C.P.R. and C.N.R. Local markets. Grain-growing district. Wheat averages 18 bush.; oats, 45; barley, 35; flax, 15. Pop. 2,190, including Canadians, Scotch, English. Hudson's Bay Co., Can. N.W. Lands Co. and C.P.R. have lands for sale. No homesteads available. Average price per acre: Raw lands, \$15 to \$20; improved, \$20 to \$35. Write Sec.-Treas. of Municipality, Reston.

**SIFTON.** Area 254,475 acres, 54,954 acres cultivated. Land, generally, is rolling; in parts hilly, with flats between the ridges. Soil is partly light loam with clay subsoil; in parts sandy. Served by C.P.R. main line and 2 branches, and C.N.R. 2 miles from Oak Lake. Watered by Assiniboine River and Oak Lake. Well adapted to general farming. Much wheat is grown and coarse grains. Stock-raising is very profitable. Wheat averages 20 bush.; oats, 30; barley, 30. At Oak Lake there is a flour mill (daily capacity 500 bbls.). Poplar, elm, ash, and maple are found in the valley of the Assiniboine River. Pop. about 2,100, including Canadians, Scotch, English, French Canadians. Price per acre: Raw lands, \$10 to \$14; improved, \$15 to \$45. No homesteads available. Good duck shooting near Oak Lake. Write R. H. Hockin, Oak Lake.

**TURTLE MOUNTAIN.** Area 257,359 acres, 113,135 acres cultivated. Land is rolling. Soil, black loam, clay subsoil. Watered by streams. Wells from 16 to 40 ft. No land is further than 8 miles from a railway station. Wheat is leading crop. Oats, barley, flax and roots do well. Pop. about 4,000, chiefly Canadians. Average price of raw lands, \$10 to \$20; improved farms, \$30. There is a beautiful summer resort at Killarney Lake. Write the Pres. Bd. of Trade, Ninga.

**WALLACE.** Area 276,190 acres, 100,000 acres cultivated. Land is rolling prairie, with poplar groves in some parts. Soil, black loam, 1 to 3 ft. deep, with clay subsoil. Watered by Assiniboine and Pipestone Rivers and tributary creeks. Wells 10 to 50 ft. Served by C.P.R. main line from s.e. to n.w. corner. C.P.R. branches running north from Virden and Kirkella; C.N.R. from south to Virden and C.P.R. branches. Mixed farming. There are 2 creameries. Local markets at Elkhorn, Virden, Hargrave and Kirkella. Well served with rural schools. Municipal 'phone system, 2,000 subscribers. A very reliable wheat-producing district. Pure-bred stock is a specialty of the district. Wheat averages 20 bush.; oats, 40; barley, 30; flax, 15. Root crops are heavy. Canadians, English and Scotch are represented. District won championship for wheat at Provincial Seed Fair. No homesteads available. Average price of raw lands, \$15 to \$25; improved farms, \$20 to \$40. See below under "Announcements." Write Sec. Bd. of Trade, Elkhorn.

**WHITEWATER.** Area 13,824 acres, 112,380 acres cultivated. Land is rolling. Soil, black loam on heavy clay subsoil. Watered by Souris River. Wells 40 ft. Served by C.N.R. and G.N.R. Local markets at Minto, Elgin and Fairfax. Grain growing and some stock. Wheat averages 20 bush.; oats, 45; barley, 50; flax, 12. Pop. about 1,800, mostly Ontario Canadians. A very rich district with good buildings. No homesteads available. Price per acre: Raw lands, \$25; improved, \$40. Write Clerk of the Municipality, Minto P.O.

**WINCHESTER.** Area 173,497 acres, 91,136 acres cultivated. Mostly rolling or flat land. Soil, clay loam, 12 to 18 in.; clay subsoil. Watered by wells 15 to 200 ft. Markets at Deloraine, Hartney, Elgin and Whitewater. Served by C.P.R. and C.N.R. Farming, chiefly grain. Wheat averages 18 bush.; oats, 40; barley, 37; flax, 16. Prizes won for wheat at Winnipeg, Brandon and World's Competition, New York. Pop. 1,157, including Can-

adi  
bee  
acu  
stea  
Del  
WOO  
vat  
gen  
hea  
Ass  
two  
the  
Wi

An  
respo  
the E  
ceived  
of the  
No  
anno  
CAN  
be  
ad  
th  
liv  
fo  
ac  
ob  
P

COR  
E  
th  
it  
r  
w  
1  
t  
e  
RE



adians, British and Belgians. An area of lignite coal has been temporarily abandoned owing to water. Price per acre: Scrub, \$10 to \$12; prairie, \$25 to \$30. No home-steads available. Write Sec.-Treas. of Municipality, Deloraine P.O.

**WOODWORTH.** Area 197,870 acres, 155,245 acres cultivated. Lying north of Sifton municipality. Land is generally rolling, broken by ravines in places. Soil is heavy clay loam; very good for wheat. Watered by Assiniboine River. Served by main line of C.P.R. and two other lines to the north. There is some timber in the River Valley in the south and north. Pop. 1,750. Write the Reeve, Kenton, Man.

#### ANNOUNCEMENTS

*Announcements concerning lands will be accepted only from responsible firms of recognized standing, personally known to the Editors. The Editors reserve the right to edit matter received. For descriptions of districts referred to in the headings of these Announcements, see above.*

**NOTE.**—The Government of Manitoba is not responsible for announcements under this heading.

**CANADIAN PACIFIC RAILWAY LANDS.** *Mixed farming may be carried on under ideal conditions in Manitoba, which, in addition to grain-growing lands of the richest quality, has all the important factors necessary to the successful raising of live stock. The Canadian Pacific Railway Company has for sale at very reasonable prices several hundred thousand acres of land in this province, and map and prices may be obtained on application to J. S. Dennis, Assistant to the President, C.P.R., Dept. of Nat. Resources, Calgary, Alta.*

**CORNWALLIS MUNICIPALITY—BRANDON DISTRICT—ROBERT E. DENNY.** *We have for sale at fair prices farm lands in the celebrated Brandon District, with its splendid possibilities for grain growing, mixed farming and horse and cattle raising. Fine scenery. Good market at Brandon, and a network of railways giving access to all points east and west. This district has won numerous prizes at Canadian and International Exhibitions. We have had several years' experience here and will furnish full information. Robt. E. Denny, P. O. Box 1014, Brandon, Man.*

**RED RIVER VALLEY.** *This famous district, 40 miles broad by 65 miles long, comprises the municipalities of St. Vitals, Macdonald, De Salaberry, Ritchot, Montcalm and Franklin. Write to Dept. Agriculture, Winnipeg, for pamphlets issued by the Southern Manitoba Red River Valley Association.*

**WALLACE MUNICIPALITY—ELKHORN DISTRICT—R. DE W. WALLER.** *I have raw lands for sale in this district at moderate prices and on easy terms, within 3 to 7 miles of Elkhorn town, on main line of C.P.R. Also improved farms, served by creamery. Elkhorn District has won numerous prizes for wheat in competition with the Province. My experience of 20 years in the district is at the disposal of intending farmers or investors. Correspondence invited. R. de W. Waller, Elkhorn, Man.*

**WINNIPEG DISTRICT.** *Free homesteads of 160 acres each may be had within 125 miles of Winnipeg, with government and school lands at from \$3 to \$6 per acre. Excellent mixed farming country, being the bed of a prehistoric ocean; the land is very fertile and produces large crops without fertilizer of any sort. Average yield of bushels per acre in 1911: Wheat, 21; oats, 47; barley, 31. Excellent grass for hay grows wild and costs about \$1.25 per ton to put up in stack. Winnipeg's 200,000 people, with 20,000 added in suburbs, affords excellent market for all produce. See under Descriptions of Towns. Maps and full information furnished free by Chas. F. Roland, Commissioner Winnipeg Development and Industrial Bureau, Permanent Exposition of Industries and Resources, Winnipeg, Man.*



# St. Boniface

---

## The Cathedral City of Manitoba

---

Manufacturers, Wholesalers, Capitalists will find here Exceptional Opportunities, Low Taxation, Cheap Water, Very Cheap Electric Power.

Excellent Factory Sites are Available on Three Railways.

The City Council Offers Liberal Inducements to Manufacturers and Others Locating Here.

---

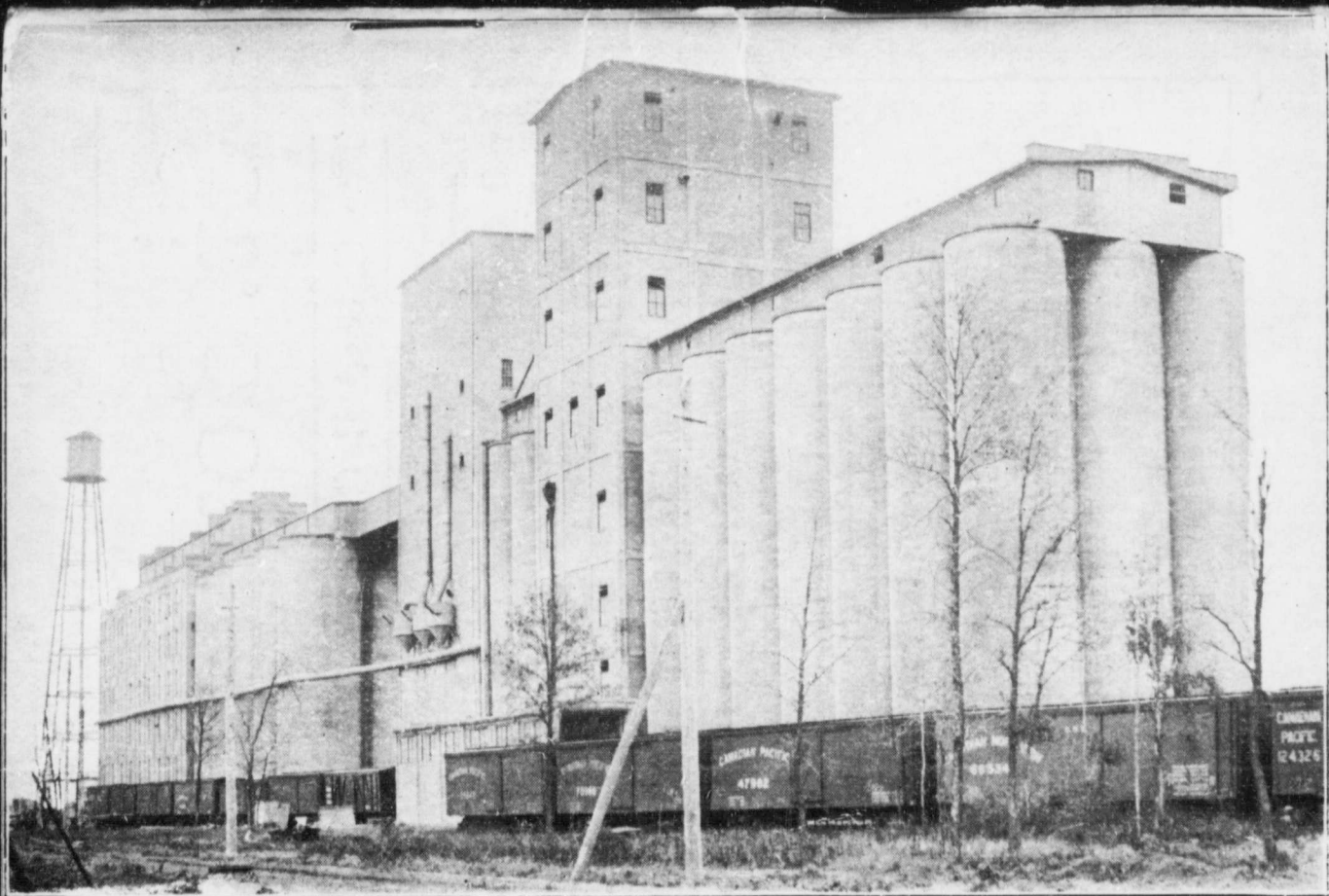
*Read description on page 38.  
See advertisement on page 42, and inside and  
outside back covers.*

---

Write for further Information to  
**Secretary, Board of Trade**  
St. Boniface, Manitoba

W.  
oder-  
horn  
erved  
rizes  
ience  
ding  
W.

may  
and  
ixed  
the  
lizer  
911:  
hay  
ack.  
rbs,  
rip-  
free  
nent  
ries



Western Canada Flour Mills, St. Boniface, Manitoba—the largest in the British Empire,  
Read description of St. Boniface on page 38 of this booklet.