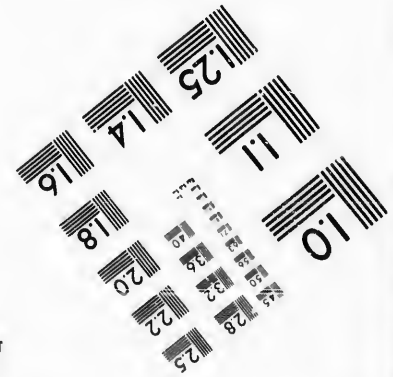
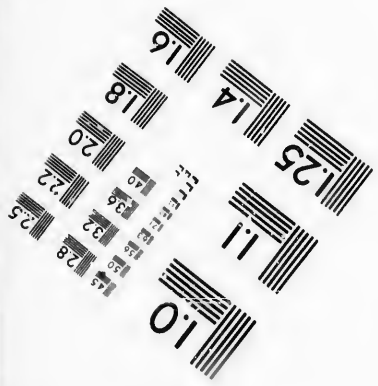
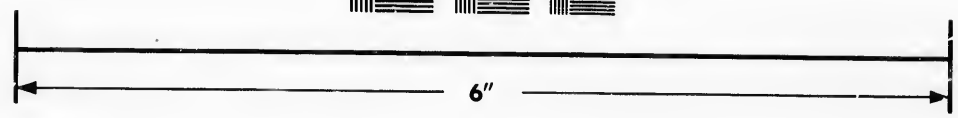
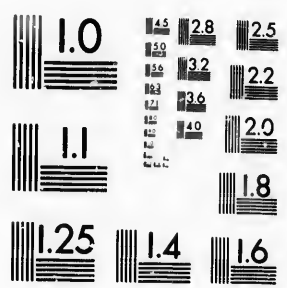


**IMAGE EVALUATION  
TEST TARGET (MT-3)**



**Photographic  
Sciences  
Corporation**

23 WEST MAIN STREET  
WEBSTER, N.Y. 14580  
(716) 872-4503

**CIHM/ICMH  
Microfiche  
Series.**

**CIHM/ICMH  
Collection de  
microfiches.**



Canadian Institute for Historical Microreproductions / Institut canadien de microreproductions historiques

**© 1986**

Technical and Bibliographic Notes/Notes techniques et bibliographiques

The Institute has attempted to obtain the best original copy available for filming. Features of this copy which may be bibliographically unique, which may alter any of the images in the reproduction, or which may significantly change the usual method of filming, are checked below.

L'Institut a microfilmé le meilleur exemplaire qu'il lui a été possible de se procurer. Les détails de cet exemplaire qui sont peut-être uniques du point de vue bibliographique, qui peuvent modifier une image reproduite, ou qui peuvent exiger une modification dans la méthode normale de filmage sont indiqués ci-dessous.

- |  |  |
|--|--|
| <input type="checkbox"/> Coloured covers/<br>Couverture de couleur   | <input type="checkbox"/> Coloured pages/<br>Pages de couleur   |
| <input type="checkbox"/> Covers damaged/<br>Couverture endommagée  | <input type="checkbox"/> Pages damaged/<br>Pages endommagées   |
| <input type="checkbox"/> Covers restored and/or laminated/<br>Couverture restaurée et/ou pelliculée  | <input type="checkbox"/> Pages restored and/or laminated/<br>Pages restaurées et/ou pelliculées  |
| <input type="checkbox"/> Cover title missing/<br>Le titre de couverture manque   | <input checked="" type="checkbox"/> Pages discoloured, stained or foxed/<br>Pages décolorées, tachetées ou piquées   |
| <input type="checkbox"/> Coloured maps/<br>Cartes géographiques en couleur   | <input checked="" type="checkbox"/> Pages detached/<br>Pages détachées   |
| <input type="checkbox"/> Coloured ink (i.e. other than blue or black)/<br>Encre de couleur (i.e. autre que bleue ou noire)   | <input checked="" type="checkbox"/> Showthrough/<br>Transparence   |
| <input type="checkbox"/> Coloured plates and/or illustrations/<br>Planches et/ou illustrations en couleur  | <input type="checkbox"/> Quality of print varies/<br>Qualité inégale de l'impression   |
| <input type="checkbox"/> Bound with other material/<br>Relié avec d'autres documents   | <input type="checkbox"/> Includes supplementary material/<br>Comprend du matériel supplémentaire   |
| <input type="checkbox"/> Tight binding may cause shadows or distortion<br>along interior margin/<br>La reliure serrée peut causer de l'ombre ou de la<br>distorsion le long de la marge intérieure   | <input type="checkbox"/> Only edition available/<br>Seule édition disponible   |
| <input type="checkbox"/> Blank leaves added during restoration may<br>appear within the text. Whenever possible, these<br>have been omitted from filming/<br>Il se peut que certaines pages blanches ajoutées<br>lors d'une restauration apparaissent dans le texte,<br>mais, lorsque cela était possible, ces pages n'ont<br>pas été filmées. | <input type="checkbox"/> Pages wholly or partially obscured by errata<br>slips, tissues, etc., have been refilmed to<br>ensure the best possible image/<br>Les pages totalement ou partiellement<br>obscurcies par un feuillet d'errata, une pelure,<br>etc., ont été filmées à nouveau de façon à<br>obtenir la meilleure image possible. |
| <input checked="" type="checkbox"/> Additional comments: /<br>Commentaires supplémentaires:  | Irregular pagination : [92] - 95, 202 - 203, 232 - 233 p.  |

This item is filmed at the reduction ratio checked below/  
Ce document est filmé au taux de réduction indiqué ci-dessous.

10X	12X	14X	16X	18X	20X	22X	24X	26X	28X	30X	32X
				✓							

The copy filmed here has been reproduced thanks to the generosity of:

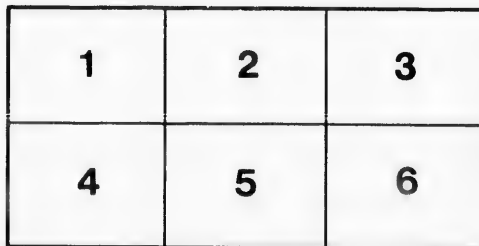
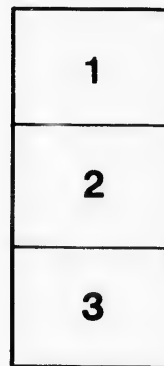
Library of the Public  
Archives of Canada

The images appearing here are the best quality possible considering the condition and legibility of the original copy and in keeping with the filming contract specifications.

Original copies in printed paper covers are filmed beginning with the front cover and ending on the last page with a printed or illustrated impression, or the back cover when appropriate. All other original copies are filmed beginning on the first page with a printed or illustrated impression, and ending on the last page with a printed or illustrated impression.

The last recorded frame on each microfiche shall contain the symbol  $\rightarrow$  (meaning "CONTINUED"), or the symbol  $\nabla$  (meaning "END"), whichever applies.

Maps, plates, charts, etc., may be filmed at different reduction ratios. Those too large to be entirely included in one exposure are filmed beginning in the upper left hand corner, left to right and top to bottom, as many frames as required. The following diagrams illustrate the method:



L'exemplaire filmé fut reproduit grâce à la générosité de:

La bibliothèque des Archives  
publiques du Canada

Les images suivantes ont été reproduites avec le plus grand soin, compte tenu de la condition et de la netteté de l'exemplaire filmé, et en conformité avec les conditions du contrat de filmage.

Les exemplaires originaux dont la couverture en papier est imprimée sont filmés en commençant par le premier plat et en terminant soit par la dernière page qui comporte une empreinte d'impression ou d'illustration, soit par le second plat, selon le cas. Tous les autres exemplaires originaux sont filmés en commençant par la première page qui comporte une empreinte d'impression ou d'illustration et en terminant par la dernière page qui comporte une telle empreinte.

Un des symboles suivants apparaîtra sur la dernière image de chaque microfiche, selon le cas: le symbole  $\rightarrow$  signifie "A SUIVRE", le symbole  $\nabla$  signifie "FIN".

Les cartes, planches, tableaux, etc., peuvent être filmés à des taux de réduction différents. Lorsque le document est trop grand pour être reproduit en un seul cliché, il est filmé à partir de l'angle supérieur gauche, de gauche à droite, et de haut en bas, en prenant le nombre d'images nécessaire. Les diagrammes suivants illustrent la méthode.

e  
détails  
s du  
modifier  
r une  
l'image

s

errata  
to

pelure,  
n à

32X

Now ready. Crown 8vo. 7s. 6d.

# ELECTRO-DYNAMICS

## *THE DIRECT-CURRENT MOTOR*

BY

CHARLES ASHLEY CARUS-WILSON

M.A. CANTAB.

MEMBER OF THE INSTITUTION OF ELECTRICAL ENGINEERS

PROFESSOR OF ELECTRICAL ENGINEERING AT

MCGILL UNIVERSITY, MONTREAL

### *CONTENTS*

CHAP.	CHAP.
I. The Induction Factor	VII. Acceleration
II. Conditions of Uniform Motion	VIII. The Force Factor
III. Equations for the Induction Factor	IX. Control
IV. Shunt-wound Motors	X. Time Curves
V. Series-wound Motors	XI. Design of Railway Motors
VI. Efficiency	XII. Armature Reaction Problems
	Index

LONGMANS, GREEN, AND CO.

39 PATERNOSTER ROW, LONDON

NEW YORK AND BOMBAY.

1898

# P R E F A C E



THE Electrical Engineer is now confronted with a variety of new problems for whose solution he must look to a full development of the science of electro-dynamics. This in the near future will stand in the same relation to the electric-motor that the science of thermo-dynamics stands in now to the steam engine. And since no branch of dynamics has a better claim to be called an exact science than electro-dynamics, it will be able to offer not only convincing but final solutions of these problems. To apply the principles of electro-dynamics to the direct-current motor is the aim of this book.

Writing for Electrical Engineers particularly, I take for granted a certain acquaintance with the use and design of motors, but, as the book is intended to be of service to engineers generally, unexplained technicalities have been avoided as far as possible.

There are now so many excellent text books on electricity and magnetism, that I offer no apology for omitting discussion of elementary principles here.

I have not considered it necessary to allude to the subject of self-induction, except in connection with the question of sparking. The advanced student will perceive the analogy between the law of acceleration given in Chapter VII. and that for the rise of current in an inductive circuit, and may be tempted to pursue the subject for himself.

The numerical accuracy attempted has been limited to that attainable with an ordinary ten-inch slide rule, on which all the examples have been worked out. Importance is attached to the graphic method of solution, and the diagrams are intended to serve as exercises for the student, who should work out similar problems with different data by the same methods.

I have to thank many friends for assistance, particularly Mr. H. S. Hering, for allowing me to use the results of his tests on electric cars; Mr. L. H. Parker, for providing me with particulars of the construction and performance of the electric locomotives on the Baltimore and Ohio Railroad; Mr. H. P. Curtiss, for placing at my disposal the outcome of his experiments on the Buffalo and Niagara Falls Electric Railway; and the Railway Department of the General Electric Company, for furnishing me with valuable information and data.

C. A. CARUS-WILSON.

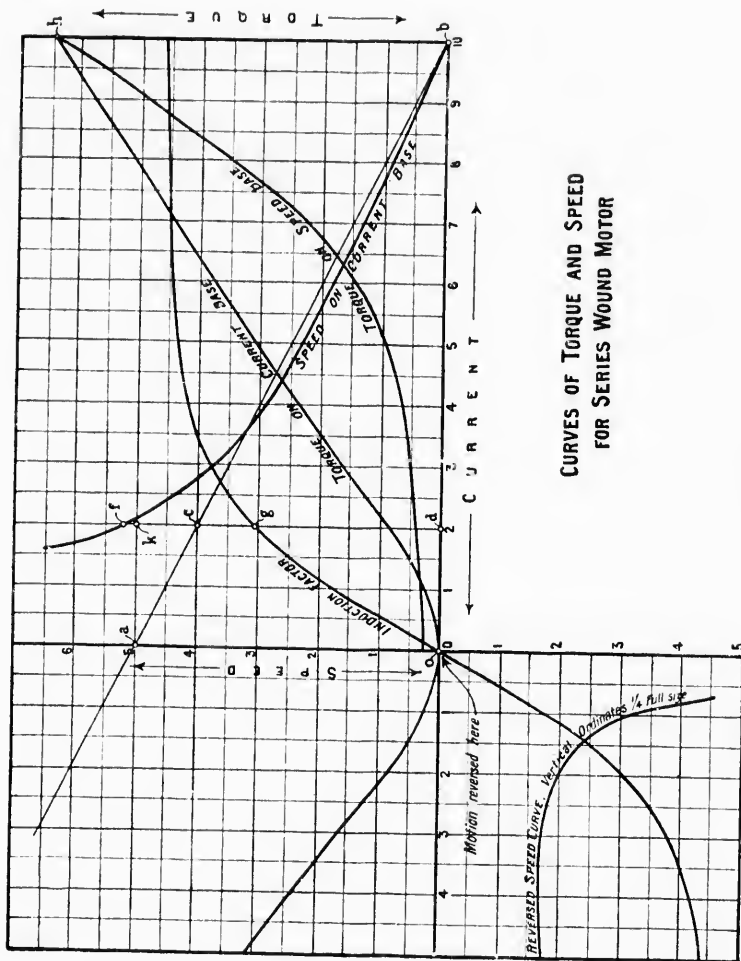
MCGILL UNIVERSITY, MONTREAL:  
*February 1898.*

## CHAPTER V

## SERIES-WOUND MOTORS

WHEN the **magnets** of a dynamo are **connected in series with the armature**, the induction factor will vary with the current. In Fig. 20 distances measured along  $ob$  represent current in the armature, and also in the magnets. We will take 500 volts as the tension of the line, 5 ohms as the resistance of the motor, the maximum current being thus smaller than 100 amperes. Let the distance  $Ol$  represent 100 volts, 10 amperes, 100 r.p.m., 1,500 inch-pounds of torque, and an induction factor of 15. Let  $oa$  represent the tension of the line,  $ob$  the maximum possible current. Join  $ba$ , and produce it. We shall call  $ba$  the loss line, since the intercept  $ke$  of any ordinate between it and a horizontal line through  $a$  gives the volts lost in heat. On  $ob$  construct the induction curve. Thus, if for a current of 70 amperes, the induction factor is 67.5, we must set up on the point representing 70 amperes in the armature, a vertical distance equal to 4.5 inches, and this will be a point on the induction curve.

If there is no residual magnetism the induction factor is nothing when the current is nothing. When the current is reversed the induction factor will also be



CURVES OF TORQUE AND SPEED  
FOR SERIES WOUND MOTOR

Fig. 20



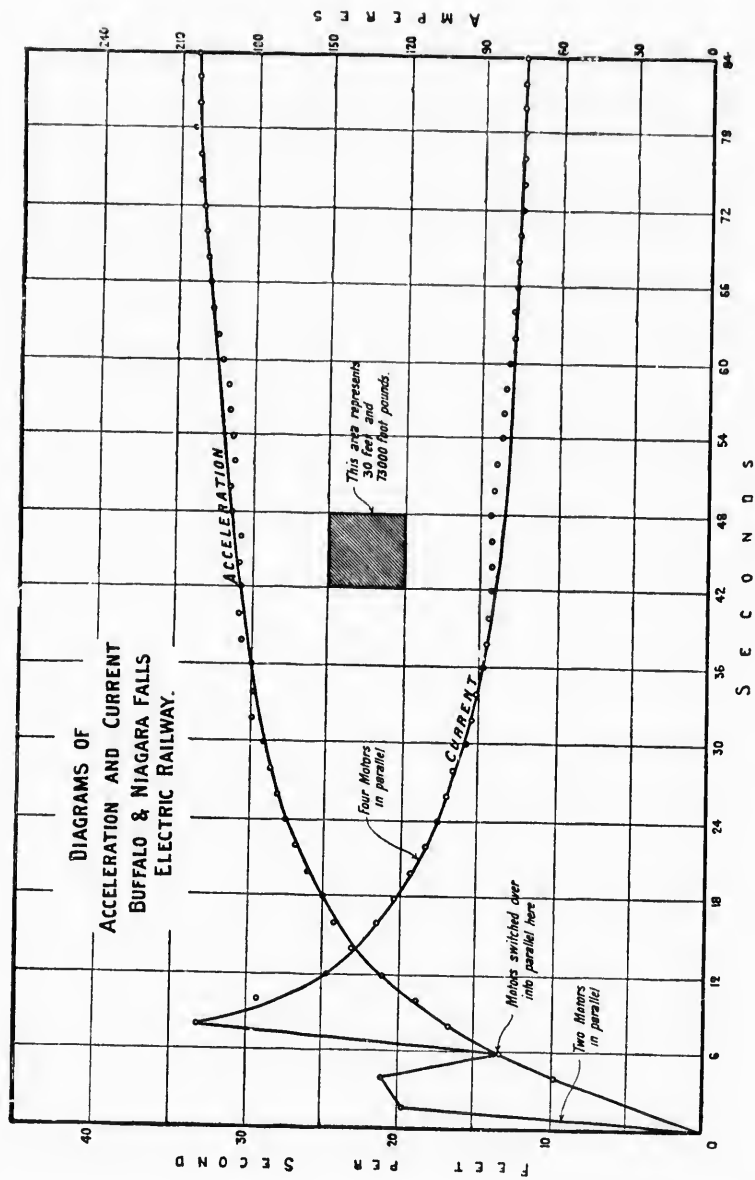


FIG. 51

speed up is well shown. The final current is 18 amperes per motor.

The mean current for the first four seconds from the moment when the circuit is made appears to be 7.5 amperes. This would give us a total torque per motor (see Fig. 21) of 2,430 inch-pounds. Deducting the frictional torque corresponding to a current of 18 amperes per motor—namely, 755 inch-pounds—we have 1,675 inch-pounds available for acceleration. Since the weight to be accelerated is 3.4 tons per motor, the acceleration is 2.05 f.p.s. per second. The acceleration curve has been drawn as if the acceleration were constant from the moment of making the current; this is not strictly correct. The curve should cut the time base about one second from the origin, but it gives a fairly accurate measure of the mean initial acceleration, which by measurement appears to be about 2.1 f.p.s. per second.

Fig. 52 is the record of a test in which the motors were allowed to speed up in series. The current taken does not appear to have been quite so much as in the case represented in Fig. 51. The form of the current curve is well shown, both with the series and with the parallel connection, and indicates the jerk experienced when the motors are thrown into parallel, the acceleration at this point being greater than at the moment of starting. The energy required to attain a speed of 35 f.p.s. is less than that required by the method illustrated in Fig. 51.

The diagrams show a considerable increase in the current taken from the line at the moment when the motors are thrown into parallel connection. It is instructive to inquire if this increase is necessary, and to

Let us take the case of a tramcar weighing 10 tons, driven by two motors working on a line having a tension of 500 volts. Suppose that we have to design an arrangement by which the car will start up from rest and travel 500 feet in 30 seconds. The motors are to be series wound.

First find the least possible accelerating current per motor by Equation 107, remembering that  $W=5$  tons. We get  $c_a=29.5$  amperes. Take 30 amperes to allow for the resistance of the motor. From Equation 103 we find that the best value of  $\frac{Mv}{d}$  is 5.15. For the present we may take  $v=4.78$  and  $d=33$  inches, giving  $M=35.5$ .

The maximum speed is 25 feet per second or 17 miles an hour. If the frictional and other resistances retarding the motion amount to 3,580 inch-pounds of torque on the car axle, the corresponding current will be 15 amperes, and the resistance of each motor must therefore be 0.6 ohm.

The initial acceleration will be 1.25 f.p s. per second, and the current of 45 amperes will be constant until the starting rheostat is all out, at which point the speed of the motor will be given by  $n = \frac{500 - 45 \times 0.6}{35.5} = 800$  r.p.m.

The speed of the car will therefore be 24.2 feet per second. Thus we see that if the induction factor is constant, the acceleration can be maintained constant up to a speed of 97 per cent. of final speed; after this point the motor will speed up according to the law already given in Chapter VII.; the error involved in assuming that the acceleration is constant up to full speed will be small, and

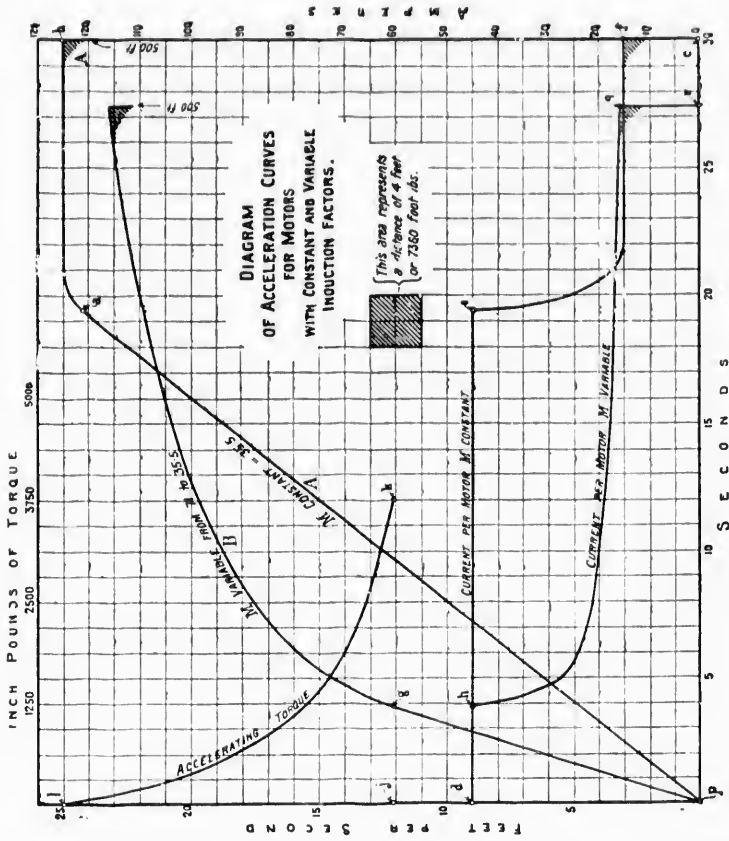


FIG. 56

