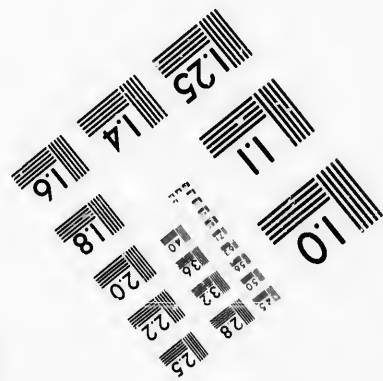
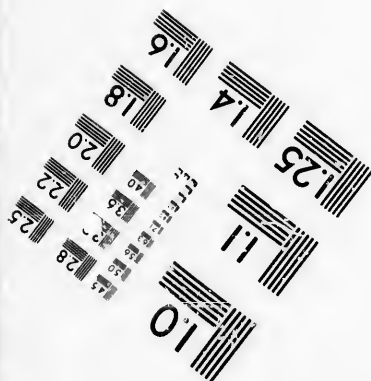
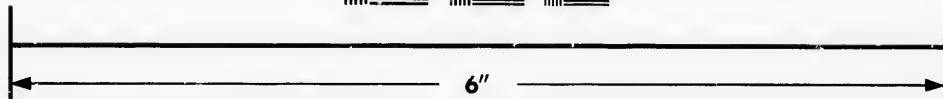
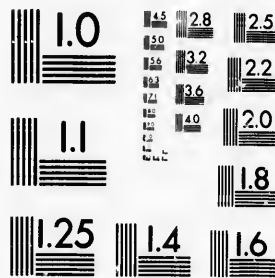


**IMAGE EVALUATION  
TEST TARGET (MT-3)**



**Photographic  
Sciences  
Corporation**

23 WEST MAIN STREET  
WEBSTER, N. Y. 14580  
(716) 872-4503



**CIHM/ICMH  
Microfiche  
Series.**

**CIHM/ICMH  
Collection de  
microfiches.**



Canadian Institute for Historical Microreproductions / Institut canadien de microreproductions historiques



**© 1986**

Technical and Bibliographic Notes/Notes techniques et bibliographiques

The Institute has attempted to obtain the best original copy available for filming. Features of this copy which may be bibliographically unique, which may alter any of the images in the reproduction, or which may significantly change the usual method of filming, are checked below.

L'Institut a microfilmé le meilleur exemplaire qu'il lui a été possible de se procurer. Les détails de cet exemplaire qui sont peut-être uniques du point de vue bibliographique, qui peuvent modifier une image reproduite, ou qui peuvent exiger une modification dans la méthode normale de filmage sont indiqués ci-dessous.

- |  |  |
|--|--|
| <input type="checkbox"/> Coloured covers/<br>Couverture de couleur   | <input type="checkbox"/> Coloured pages/<br>Pages de couleur   |
| <input type="checkbox"/> Covers damaged/<br>Couverture endommagée  | <input type="checkbox"/> Pages damaged/<br>Pages endommagées   |
| <input type="checkbox"/> Covers restored and/or laminated/<br>Couverture restaurée et/ou pelliculée  | <input type="checkbox"/> Pages restored and/or laminated/<br>Pages restaurées et/ou pelliculées  |
| <input type="checkbox"/> Cover title missing/<br>Le titre de couverture manque   | <input type="checkbox"/> Pages discoloured, stained or foxed/<br>Pages décolorées, tachetées ou piquées  |
| <input type="checkbox"/> Coloured maps/<br>Cartes géographiques en couleur   | <input type="checkbox"/> Pages detached/<br>Pages détachées  |
| <input type="checkbox"/> Coloured ink (i.e. other than blue or black)/<br>Encres de couleur (i.e. autre que bleue ou noire)  | <input type="checkbox"/> Showthrough/<br>Transparence  |
| <input type="checkbox"/> Coloured plates and/or illustrations/<br>Planches et/ou illustrations en couleur  | <input type="checkbox"/> Quality of print varies/<br>Qualité inégale de l'impression   |
| <input type="checkbox"/> Bound with other material/<br>Relié avec d'autres documents   | <input type="checkbox"/> Includes supplementary material/<br>Comprend du matériel supplémentaire   |
| <input type="checkbox"/> Tight binding may cause shadows or distortion<br>along interior margin/<br>La reliure serrée peut causer de l'ombre ou de la<br>distorsion le long de la marge intérieure   | <input type="checkbox"/> Only edition available/<br>Seule édition disponible   |
| <input type="checkbox"/> Blank leaves added during restoration may<br>appear within the text. Whenever possible, these<br>have been omitted from filming/<br>Il se peut que certaines pages blanches ajoutées<br>lors d'une restauration apparaissent dans le texte,<br>mais, lorsque cela était possible, ces pages n'ont<br>pas été filmées. | <input type="checkbox"/> Pages wholly or partially obscured by errata<br>slips, tissues, etc., have been refilmed to<br>ensure the best possible image/<br>Les pages totalement ou partiellement<br>obscurcies par un feuillet d'errata, une pelure,<br>etc., ont été filmées à nouveau de façon à<br>obtenir la meilleure image possible. |
- Additional comments: / [Printed ephemera] 1 sheet (verso blank) This copy is a photoreproduction.  
Commentaires supplémentaires:

This item is filmed at the reduction ratio checked below/  
Ce document est filmé au taux de réduction indiqué ci-dessous.

10X	14X	18X	22X	26X	30X
<input type="checkbox"/>	<input checked="" type="checkbox"/>	<input type="checkbox"/>	<input type="checkbox"/>	<input type="checkbox"/>	<input type="checkbox"/>
12X	16X	20X	24X	28X	32X

The copy filmed here has been reproduced thanks to the generosity of:

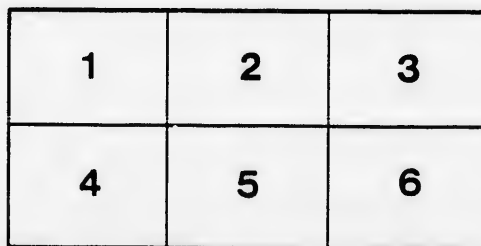
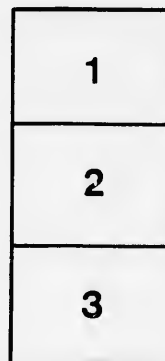
D. B. Weldon Library  
University of Western Ontario  
(Regional History Room)

The images appearing here are the best quality possible considering the condition and legibility of the original copy and in keeping with the filming contract specifications.

Original copies in printed paper covers are filmed beginning with the front cover and ending on the last page with a printed or illustrated impression, or the back cover when appropriate. All other original copies are filmed beginning on the first page with a printed or illustrated impression, and ending on the last page with a printed or illustrated impression.

The last recorded frame on each microfiche shall contain the symbol  $\rightarrow$  (meaning "CONTINUED"), or the symbol  $\nabla$  (meaning "END"), whichever applies.

Maps, plates, charts, etc., may be filmed at different reduction ratios. Those too large to be entirely included in one exposure are filmed beginning in the upper left hand corner, left to right and top to bottom, as many frames as required. The following diagrams illustrate the method:



L'exemplaire filmé fut reproduit grâce à la générosité de:

D. B. Weldon Library  
University of Western Ontario  
(Regional History Room)

Les images suivantes ont été reproduites avec le plus grand soin, compte tenu de la condition et de la netteté de l'exemplaire filmé, et en conformité avec les conditions du contrat de filmage.

Les exemplaires originaux dont la couverture en papier est imprimée sont filmés en commençant par le premier plat et en terminant soit par la dernière page qui comporte une empreinte d'impression ou d'illustration, soit par le second plat, selon le cas. Tous les autres exemplaires originaux sont filmés en commençant par la première page qui comporte une empreinte d'impression ou d'illustration et en terminant par la dernière page qui comporte une telle empreinte.

Un des symboles suivants apparaîtra sur la dernière image de chaque microfiche, selon le cas: le symbole  $\rightarrow$  signifie "A SUIVRE", le symbole  $\nabla$  signifie "FIN".

Les cartes, planches, tableaux, etc., peuvent être filmés à des taux de réduction différents. Lorsque le document est trop grand pour être reproduit en un seul cliché, il est filmé à partir de l'angle supérieur gauche, de gauche à droite, et de haut en bas, en prenant le nombre d'images nécessaire. Les diagrammes suivants illustrent la méthode.

## Directions for Con

---

1. Constables must comply with the directions given, and in cases of doubt apply to the J. P. or Reeve, or at Clerk Peace Office.—The High Constable of the County has the keys.—The Tariff of Constables' fees can be found with each Magistrate and at Clerk Peace Office.

2. All Constables' accounts to be made out in duplicate (two copies) plain and to have *their* accounts in same way,—and besides, they must have a certificate from their assistants.—All sums paid by Constables for teams, &c., should have a receipt count handy, the accounts can be *written* out in same form as the printed one and to which the mileage is reckoned,—and the number of miles to be stated.

3. In all inquests, there should be to the account, or attached, a certificate from the Constables attending Quarter Sessions and Assize Courts, should have a certificate from the J. P. and attach same to one of the copies of their Account, or get the certificate from the J. P. Accounts will be refused for such items, if not so certified.

4. The Accounts to be paid by the County, to be separate from accounts made out also separately.—All accounts to be in duplicate, and both copies sent to the Clerk Peace Office before each Court of Quarter Sessions meets.—Accounts payable to the County Treasurer, or to the Clerk Peace, before 1st January, 1st April, 1st July, and 1st October.

5. Accounts payable by the County are audited at Quarter Sessions, and at the Clerk Peace Office.—Accounts payable by the Government are audited by the three Government Auditors, and when orders therefor are returned, are paid by the County Treasurer, who is to be satisfied that the accounts are correct.

6. Constables need not be appointed yearly as heretofore, but may be appointed, remain so (after first year), till they resign, or are dismissed.—See the nearest J. P. or Reeve should be consulted in the matter.

7. Constables who have not been sworn, should immediately get sworn to at the Clerk Peace Office, *not* prepaying postage.

Clerk of Peace Office, }  
Stratford, C. W., Feb., 1864. }

## ions for Constables.

---

and in cases of doubt and for information, should apply to nearest Magistrate of the County has an oversight over all Constables, and he can also direct each Magistrate and Reeve, as well as printed copies of accounts in blank, or

ate (two copies) plainly written, and to be each sworn to.—*Assistant Constables* must have a certificate by a J. P. or Reeve that *their* services were needed as e., should have a receipt therefor attached.—If there is no *printed* form of account as the printed ones.—The mileage to be charged from the place from which r of miles to be stated.

r attached, a certificate by the Coroner that he employed the Constable.—, should have a *certificate* of attendance and of Mileage, from the Sheriff's Office, or get the certificate embodied, or the items certified, in the account itself.—ed.

arate from accounts payable by the Government.—The *latter* accounts to be ate, and both copies sworn to.—Accounts against the County to be sent to Clerk eets.—Accounts payable by the Government may be delivered to the County April, 1st July, and 1st October.

Quarter Sessions, and paid by orders of that Court, deliverable at Clerk Peace ed by the three Government Auditors in Stratford, and are sent to Government, County Treasurer, who keeps a list of the same.

retofore, but may be appointed or dismissed at any Quarter Sessions, and when r are dismissed.—See 23, Vict., Chap. 8, (1860), for particulars as to that; and tter.

diately get sworn to the Oath sent them, and send same to the Clerk of Peace

