

**CIHM
Microfiche
Series
(Monographs)**

**ICMH
Collection de
microfiches
(monographies)**



Canadian Institute for Historical Microreproductions / Institut canadien de microreproductions historiques

© 1994

The copy filmed here has been reproduced thanks to the generosity of:

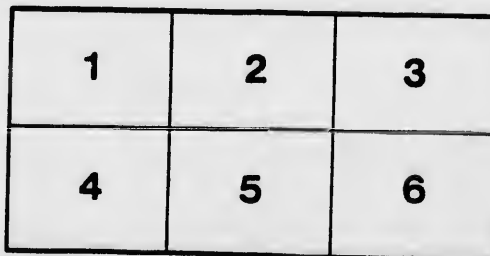
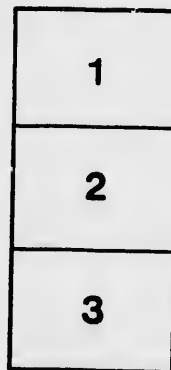
D.B. Weldon Library
University of Western Ontario

The images appearing here are the best quality possible considering the condition and legibility of the original copy and in keeping with the filming contract specifications.

Original copies in printed paper covers are filmed beginning with the front cover and ending on the last page with a printed or illustrated impression, or the back cover when appropriate. All other original copies are filmed beginning on the first page with a printed or illustrated impression, and ending on the last page with a printed or illustrated impression.

The last recorded frame on each microfiche shall contain the symbol \rightarrow (meaning "CONTINUED"), or the symbol ∇ (meaning "END"), whichever applies.

Maps, plates, charts, etc., may be filmed at different reduction ratios. Those too large to be entirely included in one exposure are filmed beginning in the upper left hand corner, left to right and top to bottom, as many frames as required. The following diagrams illustrate the method:



L'exemplaire filmé fut reproduit grâce à la générosité de:

D.B. Weldon Library
University of Western Ontario

Les images suivantes ont été reproduites avec le plus grand soin, compte tenu de la condition et de la netteté de l'exemplaire filmé, et en conformité avec les conditions du contrat de filmage.

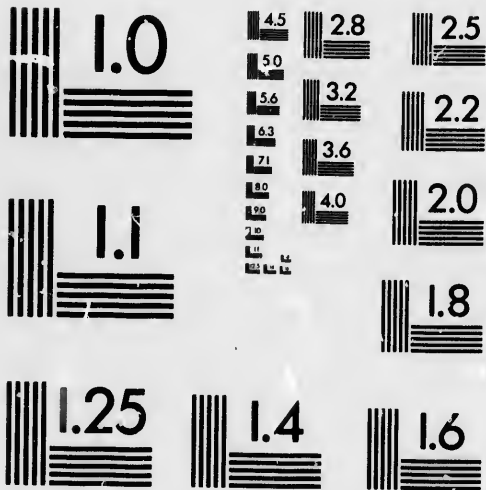
Les exemplaires originaux dont la couverture en papier est imprimée sont filmés en commençant par le premier plat et en terminant soit par la dernière page qui comporte une empreinte d'impression ou d'illustration, soit par le second plat, selon le cas. Tous les autres exemplaires originaux sont filmés en commençant par la première page qui comporte une empreinte d'impression ou d'illustration et en terminant par la dernière page qui comporte une telle empreinte.

Un des symboles suivants apparaîtra sur la dernière image de chaque microfiche, selon le cas: le symbole \rightarrow signifie "A SUIVRE", le symbole ∇ signifie "FIN".

Les cartes, planches, tableaux, etc., peuvent être filmés à des taux de réduction différents. Lorsque le document est trop grand pour être reproduit en un seul cliché, il est filmé à partir de l'angle supérieur gauche, de gauche à droite, et de haut en bas, en prenant le nombre d'images nécessaire. Les diagrammes suivants illustrent la méthode.



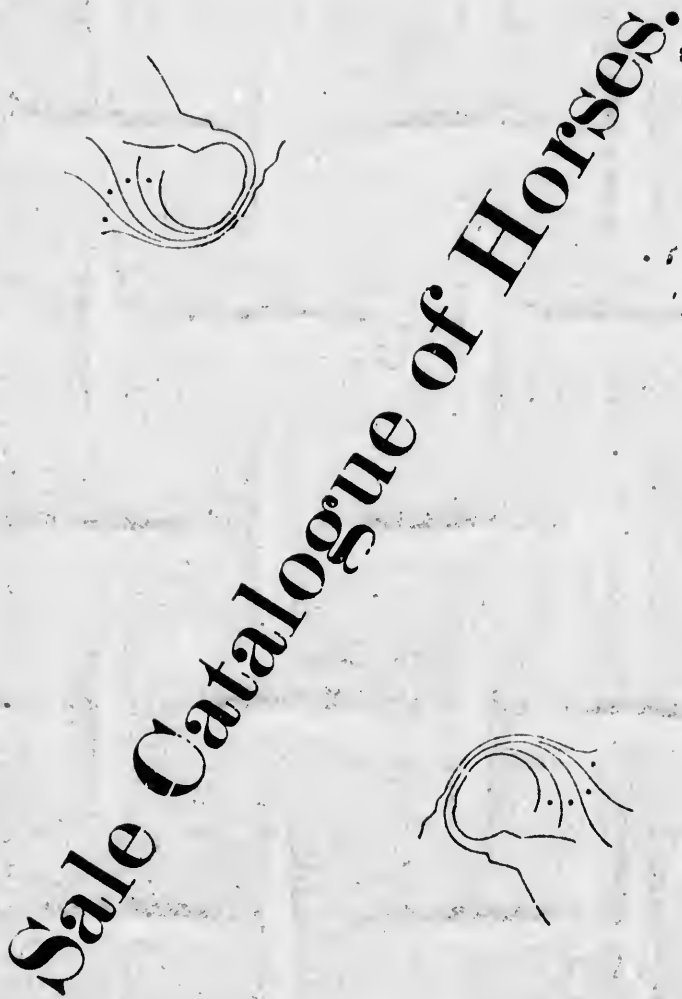
MICROCOPY RESOLUTION TEST CHART

(ANSI and ISO TEST CHART No. 2)



APPLIED IMAGE Inc

1653 East main Street
Rochester, New York 14609 USA
(716) 482 - 0300 - Phone
(716) 288 - 5989 - Fax



Sale Catalogue of Horses.

J. W. HEY, PR., AILSA CRAIG, ONT.



AUCTION SALE

—OF—

HAMBLETONIAN BRED HORSES,

TO BE SOLD BY

PUBLIC AUCTION

—ON—

Lot 24, Con. 13, Lobo,

(1½ miles West of Denfield on the L. H. & B. R'y)

—ON—

MONDAY, NOVEMBER 27, 1893,

SALE TO COMMENCE AT 1 P. M.

TERMS:—All sums at and under \$10.00 Cash. Over that amount 10 months credit on approved joint notes. 8 per cent. off for Cash.

R. H. SIDDAL & W. B. ROBSON,
DENFIELD P. O. PROPRIETORS.



No. 1. Bay Mare.

Sired by HIGHLAND.

1st. dam by a Thoroughbred.



No. 2. Brown Mare.

Sired by HIGHLAND.

1st. dam by a Thoroughbred.

No 3. Bay Mare.

(3 years old)

Sired by ST. REGULUS, 6265.

1st. dam by Champion.

This mare will register in the Canadian Clydesdale Stud Book, is a very fine mare and is in foal.



No. 4. Bay Mare.

(5 years old)

Sired by CHESTER, 2.43½.

1st. dam by Highland.

2nd. dam Thoroughbred.

No. 5. Brown Mare.

(6 years old)

Sired by RIDGEWOOD, 10358.

1st. dam by Highland.

2nd. dam Thoroughbred.



No. 6. Bay Mare.

(2 years old)

Sired by RIDGEWARD.
(Son of Ridgewood)

1st. dam by Highland.

2nd. dam Thoroughbred.

No. 7. Bay Mare.

(2 years old)

Sired by KENTUCKY POTEEN, 7131.

1st. dam by Highland.

2nd. dam Thoroughbred.



No 8. Black Colt.

(2 years old)

Sired by RIDGEWARD.

(Son of Ridgewood)

1st. dam by Highland.

2nd. dam Thoroughbred.

No. 9. Bay Filly.

(yearling)

Sired by RIDGEWARD.

1st. dam by Prince Tom.

Will make a fine carriage mare.



No. 10. Bay Filly.

(yearling)

Sired by GOLD FOX.

1st. dam by Highland.

2nd. dam Thoroughbred.

No. 11. Bay Colt.

Sired by **FOUR LINES**, 2.29½.

1st. dam by Highland.

1st. dam by a Thoroughbred.



No. 12. Brown Colt.

Sired by **FOUR LINES**, 2.29½.

1st. dam by Ridgewood.

2nd. dam by Highland.

No. 13. Bay Stallion.

Sired by TONTINE, 1827.

1st. dam by Clear Grit.



No 14. Bay Filly.

(2 years old)

Sired by BON TON.
(Son of Tontine)

1st. dam Thoroughbred.

No. 15. Bay Gelding.

(2 years old)

Sired by PROGRESS W., 12871.

1st. dam by Messenger.



No. 16.. Bay Foal.

Sired by BON TON.
(Son of Tontine)

1st. dam by Colonel Eddy.

No. 17. Bay Foal.

Sired by BON TON.
(Son of Tontine)

1st. dam by Colonel Eddy.



No. 18. Grey Foal.

Sired by BON TON.


1st. dam by Messenger.

No. 19. Bay Foal.

Sired by BON TON.

1st. dam by Bay George.



 These are a fine lot of young horses and well bred. Parties wanting this class of Stock will do well to attend the sale.

es
of

