

**CIHM
Microfiche
Series
(Monographs)**

**ICMH
Collection de
microfiches
(monographies)**



Canadian Institute for Historical Microreproductions / Institut canadien de microreproductions historiques

© 1996

Technical and Bibliographic Notes / Notes techniques et bibliographiques

The Institute has attempted to obtain the best original copy available for filming. Features of this copy which may be bibliographically unique, which may alter any of the images in the reproduction, or which may significantly change the usual method of filming, are checked below.

L'Institut a microfilmé le meilleur exemplaire qu'il lui a été possible de se procurer. Les détails de cet exemplaire qui sont peut-être uniques du point de vue bibliographique, qui peuvent modifier une image reproduite, ou qui peuvent exiger une modification dans la méthode normale de filmage sont indiqués ci-dessous.

- ☒ Coloured covers/
Couverture de couleur
- ☒ Covers damaged/
Couverture endommagée
- ☐ Covers restored and/or laminated/
Couverture restaurée et/ou pelliculée
- ☐ Cover title missing/
Le titre de couverture manque
- ☐ Coloured maps/
Cartes géographiques en couleur
- ☐ Coloured ink (i.e. other than blue or black)/
Encre de couleur (i.e. autre que bleue ou noire)
- ☐ Coloured plates and/or illustrations/
Planches et/ou illustrations en couleur
- ☐ Bound with other material/
Relié avec d'autres documents
- ☒ Tight binding may cause shadows or distortion
along interior margin/
La reliure serrée peut causer de l'ombre ou de la
distorsion le long de la marge intérieure
- ☐ Blank leaves added during restoration may appear
within the text. Whenever possible, these have
been omitted from filming/
Il se peut que certaines pages blanches ajoutées
lors d'une restauration apparaissent dans le texte,
mais, lorsque cela était possible, ces pages n'ont
pas été filmées.

- ☐ Coloured pages/
Pages de couleur
- ☐ Pages damaged/
Pages endommagées
- ☐ Pages restored and/or laminated/
Pages restaurées et/ou pelliculées
- ☒ Pages discoloured, stained or foxed/
Pages décolorées, tachetées ou piquées
- ☐ Pages detached/
Pages détachées
- ☒ Showthrough/
Transparence
- ☐ Quality of print varies/
Qualité inégale de l'impression
- ☐ Continuous pagination/
Pagination continue
- ☐ Includes index(es)/
Comprend un (des) index
- Title on header taken from: /
Le titre de l'en-tête provient
- ☐ Title page of issue/
Page de titre de la livraison
- ☐ Caption of issue/
Titre de départ de la livraison
- ☐ Masthead/
Générique (périodiques) de la livraison

Title on header taken from: /
Le titre de l'en-tête provient:

- ☒ Additional comments: / There are some creases in the middle of the pages.
 Commentaires supplémentaires:

This item is filmed at the reduction ratio checked below/
Ce document est filmé au taux de réduction indiqué ci-dessous

[illegible]

The copy filmed here has been reproduced thanks to the generosity of:

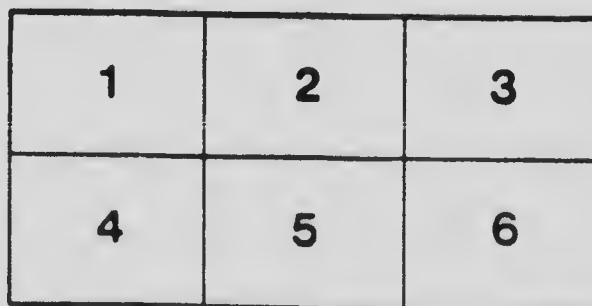
Canadiana department
North York Central Library

The images appearing here are the best quality possible considering the condition and legibility of the original copy and in keeping with the filming contract specifications.

Original copies in printed paper covers are filmed beginning with the front cover and ending on the last page with a printed or illustrated impression, or the back cover when appropriate. All other original copies are filmed beginning on the first page with a printed or illustrated impression, and ending on the last page with a printed or illustrated impression.

The last recorded frame on each microfiche shall contain the symbol ➡ (meaning "CONTINUED"), or the symbol ▼ (meaning "END"), whichever applies.

Maps, plates, charts, etc., may be filmed at different reduction ratios. Those too large to be entirely included in one exposure are filmed beginning in the upper left hand corner, left to right and top to bottom, as many frames as required. The following diagrams illustrate the method:



L'exemplaire filmé fut reproduit grâce à la générosité de:

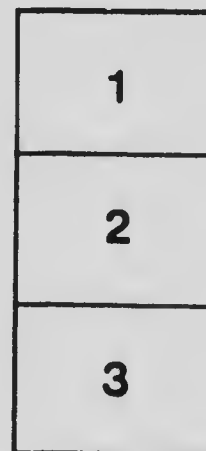
Canadiana department
North York Central Library

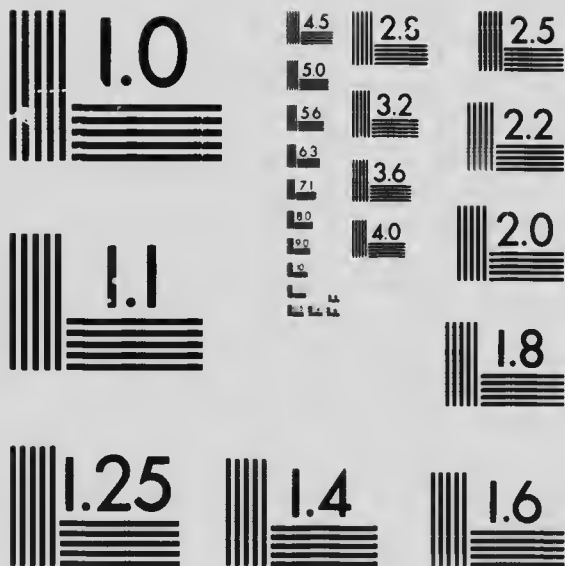
Les images suivantes ont été reproduites avec le plus grand soin, compte tenu de la condition et de la netteté de l'exemplaire filmé, et en conformité avec les conditions du contrat de filmage.

Les exemplaires originaux dont la couverture en papier est imprimée sont filmés en commençant par le premier plat et en terminant soit par la dernière page qui comporte une empreinte d'impression ou d'illustration, soit par le second plat, selon le cas. Tous les autres exemplaires originaux sont filmés en commençant par la première page qui comporte une empreinte d'impression ou d'illustration et en terminant par la dernière page qui comporte une telle empreinte.

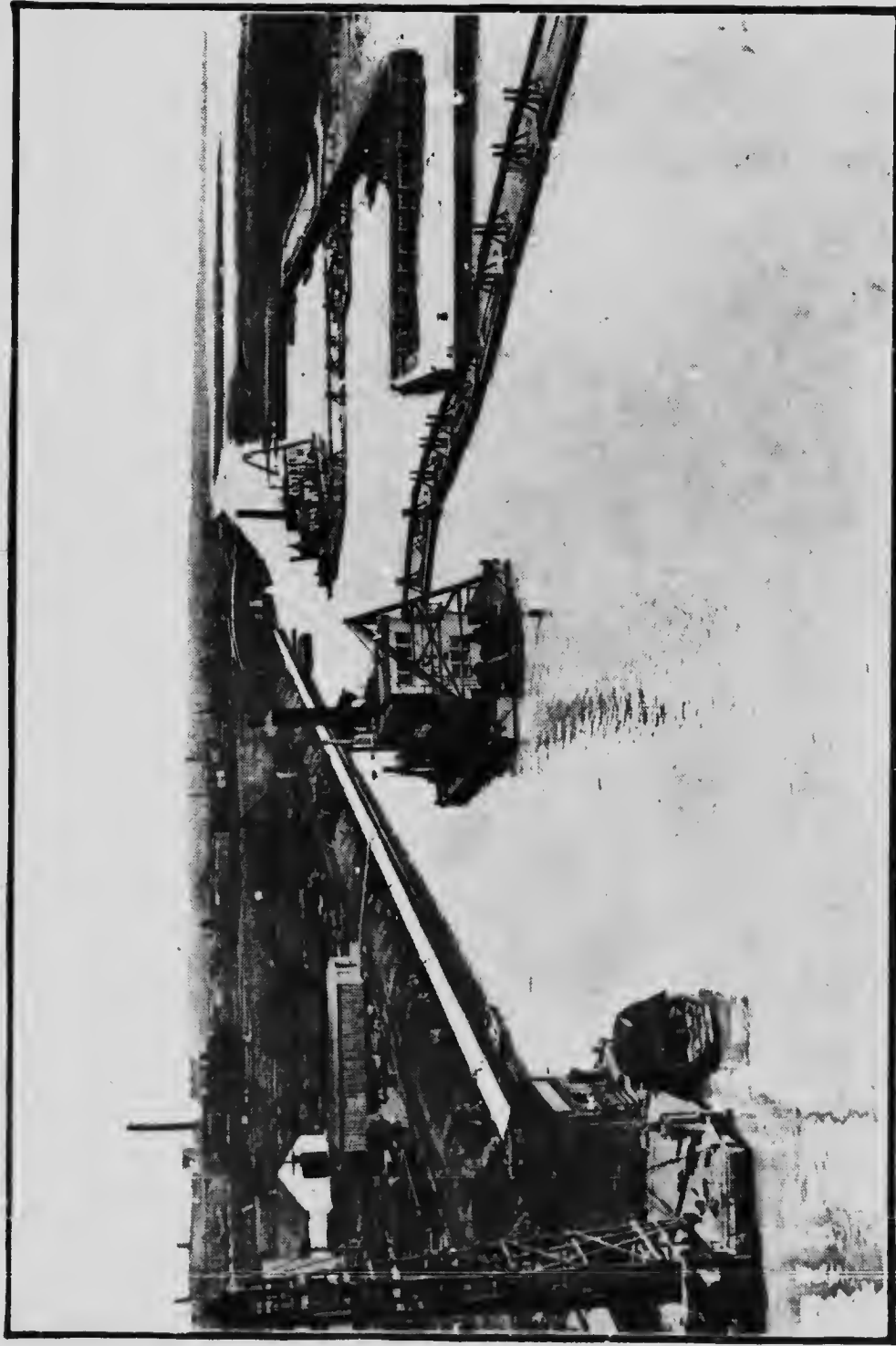
Un des symboles suivants apparaîtra sur la dernière image de chaque microfiche, selon le cas: le symbole ➡ signifie "A SUIVRE", le symbole ▼ signifie "FIN".

Les cartes, planches, tableaux, etc., peuvent être filmés à des taux de réduction différents. Lorsque le document est trop grand pour être reproduit en un seul cliché, il est filmé à partir de l'angle supérieur gauche, de gauche à droite, et de haut en bas, en prenant le nombre d'images nécessaire. Les diagrammes suivants illustrent la méthode.





MICROCOPY RESOLUTION TEST CHART
 NATIONAL BUREAU OF STANDARDS
 STANDARD REFERENCE MATERIAL 1010a
 (ANSI and ISO TEST CHART No. 2)



Toronto Waterfront Improvements—1,000 acres adjoining the harbour are being reclaimed for factory sites with free railway sidings, public docks, etc. See page 67. Write for literature to Sec. Toronto Harbour Commissioners, 50 Bay St., Toronto

Opportunities in Ontario

1916



Containing Extracts from
Heaton's Annual



The Provincial Booklet Series

(see over)

Copyright by Ernest Heaton
Toronto, 1916

Printed in Canada

Heaton's Standard Publications

HEATON'S PROVINCIAL BOOKLETS are revised every year, are published for the Canadian Provincial Governments, are absolutely reliable, contain no unnecessary words, have been designed to fit easily into a pocket or an envelope, can be mailed with ordinary correspondence and give precisely the information wanted by intending settlers, travellers, investors, manufacturers and others who wish to extend their business. *Together they form the only uniform series of publications covering each Province in Canada.* For free copies apply to the Agents of the Provinces in London or to the Minister of Agriculture of each Province as follows:

<i>Heaton's Alberta Booklet.....</i>	<i>at Edmonton, Alta.</i>
<i>" British Columbia Booklet</i>	<i>" Victoria, B.C.</i>
<i>" Manitoba Booklet.....</i>	<i>" Winnipeg, Man.</i>
<i>" New Brunswick Booklet..</i>	<i>" Fredericton, N.B.</i>
<i>" Nova Scotia Booklet.....</i>	<i>" Halifax, N.S.</i>
<i>" Ontario Booklet</i>	<i>" Toronto, Ont.</i>
<i>" New Ontario Booklet....</i>	<i>" Toronto, Ont.</i>
<i>" Prince Ed. Island Booklet</i>	<i>" Charlottetown, P.E.I.</i>
<i>" Quebec Booklet.....</i>	<i>" Quebec, Que.</i>
<i>" Saskatchewan Booklet... ..</i>	<i>" Regina, Sask.</i>

HEATON'S DIRECTORY OF CANADIAN RESOURCES is revised annually, is illustrated, contains complete descriptions of agricultural districts and all commercial towns in Canada with detailed concise summary of Canadian resources under headings Agriculture, Area, Commerce, Education, Finance, Fisheries, Forests, Fur Farming, Immigration, Mining, Sport, Water Powers, etc., etc., and a complete index, also an alphabetical guide to the contents of free Dominion and Provincial Government publications, and how to get them. **Invaluable to investors, travellers, intending settlers and all Canadians.** Price cloth-bound, One Dollar. For 1916 edition write to The Times Book Club, Oxford St., London. or to

Heaton's Agency, Toronto, Canada

Opportunities in Ontario

Agriculture

NOTE.—The agricultural conditions in the Northern part of the Province must be considered separately. Write to the Director of Colonization, Parliament Buildings, Toronto, or to the Ontario Government Agent, 163 Strand, London, W.C., England, or Heaton's New Ontario Booklet For general description of New Ontario see page 14.

BEEKEEPING. The Dominion census of 1911 gives the province a total of 124,237 colonies. This census however only took account of bees owned on farms, and as there are a number of persons making their living from beekeeping and residing in towns and cities, the total number of colonies is much greater than the census shows, being estimated at about 300,000. The majority of bees are wintered on their summer stands with special protection, those not so wintered being placed in cellars. Small apiaries of from 20 to 50 colonies on farms, properly cared for, give good returns, and specialists keeping from 200 to 500 colonies make a good living from bees. Numbers of farmers' wives and daughters make good money from a few hives. The Ontario Beekeepers' Association has about 1,250 members, the average annual crop report from these being from 50 to 60 lbs. of honey per colony.

CANNING FACTORIES. There are over 150 factories that put up fruits and vegetables in tins and in glass.

DAIRYING. The value of dairy products in 1914 is estimated at \$40,000,000. Considerably over half the cheese produced in Canada is made in Ontario. The province exports more cheese than the whole of the U.S. Of butter, the greater portion is made on the farm. The manufacture of condensed milk is becoming an important industry; four such factories established in recent years. In some districts casein is being manufactured. The furnishing of milk and cream for consumption as such in towns and cities is receiving more and more consideration, and the volume of raw material devoted to this trade is increasing rapidly from year to year. For openings for creameries, see Boards of Trade Register in this book.

OPPORTUNITIES IN ONTARIO

See under Fodder Crops, and write for pamphlet on Dairying to Department of Agriculture, Toronto.

NEW CANADIAN RECORD. A two-year-old Holstein-Friesian heifer, Netherland-Faforet, owned by W. H. Cherry, of Garnett, Ontario, gave the following results on a 30-day official test in 1913: In 7 days, 436 lbs. of milk and 21.65 lbs. of butter; in 14 days, 863 lbs. of milk and 42.70 lbs. of butter; in 30 days, 1,854 lbs. of milk and 89.65 lbs. of butter. This record has never been surpassed by any cow in Canada.

FARM VALUES.

	1901	1913
Land.....	\$585,354,294	\$782,993,853
Buildings.....	226,575,228	345,303,335
Implements.....	59,897,513	89,702,273
Live Stock.....	129,496,261	237,591,885
	<hr/>	<hr/>
	\$1,001,323,296	\$1,455,591,346

FLAX. The total area under cultivation in 1912 was about 9,000 acres; in 1914 a little over 5,000 acres.

LINSEED OIL. There are large oil mills in Western Ontario. The quantity of oil produced varies from 15,000 to 20,000 barrels yearly, all marketed in the Dominion.

FLAX FIBRE. There were once 60 flax mills in Ontario. In 1915 there were 9 working and 25 idle mills. The decline of this industry is attributed to a lack of expert flax men, want of grading, shortage of labor to pull the flax, and lack of the best seeds for fibre. The shortage of European flax, owing to the war, has drawn the attention of Irish linen manufacturers to the Canadian field. Several new processes have been invented, of which the best known is the Feuillette process, first established at Goderville, in Normandy. In 1915 the Canadian Flax Association was formed. President, Geo. H. Campbell, Toronto; Secretary, A. L. McCredie, Toronto.

FODDER CROPS. The area of pasture is about 3,082,671 acres. Write for pamphlet on Dairying to Department of Agriculture, Toronto. The figures quoted below are taken from the Dominion Government September estimate.

BARLEY. Formerly grown for malting, now grown for feeding. In 1915 the crop was 15,679,000 from 449,000 acres.

CLOVER. Red clover and alsike are grown extensively both for hay and for seed. Alfalfa or Lucerne is being more extensively grown than formerly.

HAY. The area of hay is about 3,428,800 acres, yielding on an average 1.14 tons per acre, and nearly 2 tons in more

favorable years. Hay forms in value about one-third of all the field crops.

INDIAN CORN. Most farmers grow a few acres of Indian corn which is stored in the silo. It grows from six to ten feet high. Crop averages 10 to 15 tons per acre, with occasionally much larger yields. Half of the corn produced is grown in the counties of Essex and Kent. It is used partly for distilling, partly for production of fat hogs.

OATS. Next to hay the most valuable field crop, worth thirty-five to forty millions annually. In 1915 122,810,000 were harvested from 3,095,000 acres. Write for pamphlet on Dairying to Department of Agriculture, Toronto

PEAS. In 1915, 169,000 acres of peas were grown, yielding 3,007,000 bushels. Ontario peas are considered the best in the world.

FRUIT GROWING. The total orchard acreage in 1912 was 306,767 acres; small fruits, 24,360 acres; vineyards, 11,136 acres. The bulk of the fruit is consumed by local consumption. The Western markets for Ontario tender fruits are of growing importance. Peaches, apples and pears are exported to Great Britain. An experimental fruit farm has been established in the Niagara District, one object being to develop varieties suitable for long shipment. Over 50 co-operative Fruit Growers' Associations do a good work in producing, packing and marketing fruits. The industry is rapidly developing. For descriptions and prices of fruit lands see under "Agric. and Fruit Districts." Write to Department of Agriculture, Toronto, for pamphlet on fruit growing, list of associations, and special bulletins on apples, grapes, peaches, etc.

APPLES. According to the Dominion Census of 1911, there were in Ontario 7,766,257 apple trees, with a total production of 6,305,462 bushels of fruit. These figures are low, as the year 1910 was one of comparative failure of the apple fruit. The province produces 60% of the total crop of apples in Canada. The bulk of the crop is sold within the Province. During the past 10 years Ontario has exported more apples to Great Britain than any other province or state on the continent. The Western Provinces take annually about 1,000,000 bushels. This market is growing. The principal commercial apples in order of ripening are: Duchess, Wealthy, Snow, Ribston-pippin, McIntosh, King, Greening, Baldwin, Golden Russett, Spy.

GRAPES. The counties Lincoln, Wentworth and Welland produce 95% of grapes grown. In these counties there were, in 1913, 8,889 acres of vineyard. The total output in 1913 was 36,000 short tons. The vine begins to bear

at four years, and continues a lifetime. A grower in Niagara District estimates maintenance and profit per acre as follows: Cost of bringing into bearing, \$75; annual outlay when bearing (pruning and tying, cultivation, spraying three times, packing and packages), \$58.50. Average yield 3 tons, or 700 baskets, at average price, 15c. \$112.50. Net returns, \$54. Markets, Toronto, Hamilton, and other neighboring cities; Western and Eastern Provinces. Wine manufacture absorbs about $\frac{1}{4}$ of crop. The bottling of unfermented grape juice has been started on a large scale. Good grape land costs from \$80 to \$125 per acre. See under Wine. Write to Department of Agriculture, Toronto, for Bulletin, Grape Growing in Ontario.

PEACHES. Trees begin to bear in four years and should last 15 years. An expert peach grower estimates cost of maintenance and profit per acre as follows: Spraying, manuring, pruning and cultivation, \$28; picking, packing and packages, \$53; hauling to station, say \$5; total cost, \$86. Returns, 700 baskets (11 quarts), at 50c.—\$350. Net return, \$264. The average orchard will yield less than the above figures. The best varieties are the Yellow St. John, Crawford, Elberta and New Pacific. Peach trees 100 to the acre produce fruit when 4 years old and yield profitably till about the 15th year. In 1913, 4,392 cases were exported to Great Britain.

PEARS. Pears net the grower from \$65 to \$100 per acre. The Bartlett, Anjou, Duchess and other varieties are grown. Pears are exported to Great Britain.

PLUMS. The Burbank, Bradshaw, Monarch and Anjou are the leading varieties. The average net profit is \$40 to \$75 per acre.

OTHER FRUITS. Cherries, strawberries, raspberries, blackberries, gooseberries and currants yield from \$60 or \$100 up to \$500 an acre in some cases. If the tree is well covered in winter, figs will ripen in the Niagara District. Melons and citrons do well in Southern Ontario.

GRAIN CROPS. In 1915 the total yield and average yield per acre by bushels, as shown by the Dominion January estimate, was as follows :

	Area	Per Acre	Total Yield
Spring Wheat	121,000	22 36	2,706,000
Winter Wheat	972,000	28 34	27,546,000
Oats	3,095,000	39.68	122,810,000
Barley	449,000	34.23	15,369,000
Rye	78,000	19.88	1,551,000
Peas	169,000	17 79	3,007,000
Buckwheat	169,000	21.81	3,686,000
Mixed Grains	345,000	39.91	13,769,000
Corn for husking	237,000	58.48	13,860,000

LIVE STOCK. The value of the live stock on the farms has increased by over \$80,000,000 in the past ten years.

CATTLE. Dominion returns for 1915 show that in Ontario there were 1,935,606 milch cows and 1,935,606 other cattle. For dairy cattle the Holstein, Ayrshire and Jersey are the favorites, yielding about one-third more milk than the corresponding grades. In Eastern Ontario a cow produces 24,000 lbs. of milk a year. The Shorthorn has its champions especially as a dual purpose cow. For beef cattle the Shorthorn, Hereford, Polled Angus and the Galloway are most popular. There is a large export trade with the North-West. Large shipments are made from Toronto to Great Britain. The remission of the duty upon cattle exported to the United States has resulted in large purchases of Canadian animals by U.S. buyers. The consequent depletion of promising young stock is regarded with apprehension. See under Ranching, page 8.

HORSES. Ontario is the leading province for the breeding of horses. Numbers are shipped from the province in every direction every week. Heavy draft horses, 1,600 lbs. upwards, bring from \$325 to \$350; the agricultural horse, 1,300 lbs. to 1,500, from \$225 to \$275; the general purpose horse, 1,175 lbs. to 1,350 lbs., from \$250 to \$300; the carriage horse brings from \$200 to \$500. Motor cars notwithstanding, the demand is good.

SHEEP. The climate and soil conditions of Ontario are particularly adapted to sheep raising. This has been demonstrated by Ontario breeders winning a large number of the prizes at the large American Expositions, such as the World's Fair at Chicago, the Pan-American at Buffalo, the Exposition at St. Louis, and the annual International Show at Chicago. According to Dominion returns for 1915 there were 611,789 sheep and lambs in the province. Of pure-bred sheep there are about 20,000 head in the province of the following breeds: Shropshire, Leicester, Oxford, Lincoln, Cotswold, Southdown, Dorset, Hampshire and Suffolk. On 25th Feb, 1916, good quality of mutton was selling on the Toronto market for from \$14.00 to \$16.00 per hundred weight, and spring lamb for from \$19.50 to \$21.00 per cwt. At the same time washed wool was quoted at 43c to 46c. per pound. The home consumption of mutton and lambs has greatly increased during the last few years. The American cities afford a profitable market for the surplus stock, especially if the animals are of high quality. The abolition of the duty on wool by the new U.S. Tariff Act will give an impetus to sheep breeding.

SWINE. There is a growing Canadian demand for hams and bacon, which, with the present export trade, will for the

next few years easily absorb any increase there will be of live hogs in the province. For the production of bacon the Yorkshire hog is considered best, though the Tamworth and Berkshire are also suitable. Pork factories are established at Toronto, Hamilton, Ingersoll, Stratford, Peterboro and Ottawa. From $1\frac{1}{2}$ to 2 million hogs are annually slaughtered in the province. The lumber companies use a large quantity of mess or fat pork, which is largely exported from the United States. In 1915 there were 1,469,573 swine in the province

MAPLE SUGAR AND SYRUP. The average annual sugar output of Canada was about 19,600,000 lbs. during the decade 1901-1911; of this, Ontario contributed 5,000,000 lbs. The average selling price has been about 10 cents per lb. Canada supplies three-sevenths of the world's output. The trees are generally tapped in the latter part of March and April. Moderately warm days followed by freezing nights are ideal conditions to promote flow. Seasons vary, but the cost of fitting up a modern sugar camp is a paying investment even at low market prices. A stringent Act has been passed by the Dominion Government to prevent adulterated imitations. Maple sugar is found on the Royal Table and in most hotels and large stores in London. For instructions, etc., write for Bulletin No. 1 B. to the Department of Agriculture, Ottawa.

POULTRY. The farmers of the province are each year realizing more and more the large profits that may be made from a flock of poultry. A large number of poultry associations have been organized throughout the province for the purpose of raising the standard of poultry breeding. Ontario breeders have for many years been winning a large number of the principal prizes at the leading American Shows. At the Provincial Winter Fair held at Guelph, Ontario, each December, there is one of the greatest annual poultry shows on the continent. Last year there were over 5,000 entries. Large quantities of poultry and eggs are shipped to the markets of Great Britain.

EGG CIRCLES have been established in some districts for the stimulation of production and efficient handling. By this means the farmer has been enabled to secure from 2c. to 6c. per dozen more for his eggs.

RANCHING. In Ontario, from a line drawn from Brockville to the mouth of the Severn River on Lake Huron, running north up to the National Trans-continental Railway, there lies an immense tract of practically waste rocky land covered with second growth

timber, interlaced by lakes and streams, peat bogs and beaver meadows, with here and there a pocket of arable land. Recent successful experiments have shown that this land can be used for cattle ranching. In summer the cattle browse through the scrub and second growth trees free from flies. In winter open shelters are provided for use as required. Beyond this the cattle do not require housing or care, as they feed around the hay-ricks and drink from dammed streams of running springs. Cattle averaging 500 lbs. will double their weight in a year at a minimum cost. In selecting a ranch the requisites are a never-freezing stream, beaver meadows from which hay can be cut and a rocky shelter for the barns in winter. The ranch may also serve as a big game and fishing preserve. Write to The Burleigh Ranching Co., Burleigh P.O., Ont.

ROOTS AND VEGETABLES. About 350,000 acres are devoted to root crops. The production of early vegetables under glass is increasing, especially near Toronto, Hamilton and in Essex County. Large tracts of market lands near the large cities have been taken up lately for city lots and the present growers cannot fill the demand. Around Toronto there are over 1000 vegetable gardens, averaging 7 to 8 acres each.

BEANS. Bean growing on a commercial scale is at present confined to Kent, and Elgin Counties. The crop in 1913 was 1,021,243 bushels, of which the total market value was estimated at \$1,738,900. The bulk is marketed at home, surplus in Great Britain, France and West Indies.

DESSICATED VEGETABLES. This industry has been greatly stimulated by the war. R. J. Graham Co., Belleville, have been handling contracts for the British and French War Offices. By 30th Oct., 1915, over 1 million pounds of this mixture had been shipped overseas.

ONIONS. The total acreage planted is over 1,000 acres. Average yield about 450 bushels per acre, chiefly the yellow variety. Importations from Egypt, Bermuda and Spain are large. From the U.S. about 78,000 bushels are imported annually over export trade. Write for Bulletin 199, to Department of Agriculture, Toronto.

POTATOES. The best potato growers average over \$100 per acre. Toronto alone consumes over 3,000 90-lb. bags per day, and other cities in proportion. About 80% of Toronto's potato supply comes from New Brunswick. An average crop is 200 bushels per acre.

SUGAR BEETS. The Dominion Sugar Co. owns the factories at Wallaceburg and Berlin, the only factories in Ontario.



The Growing of Tobacco in Ontario is chiefly localized in Essex and Kent Counties, which produced in 1913 about 7 million lbs. (See page 11).

The farmer's net profits per acre are estimated at from \$35 to \$100 in exceptional cases. The crop so effectually cleans the land or so well fits it for barley, oats or wheat. By-products of this industry are sugar beet meal, which takes well with the cattle raisers, also potash and mother liquor. Write for Bulletin to Census and Statistics Branch, Department of Agriculture, Ottawa.

TOMATOES. Average yield is 250 bushels per acre. As high as 500 bushels has been reached. Large quantities are grown for canning factories in Prince Edward County and the Niagara district. Leamington annually ships early tomatoes as far west as Calgary and east to Halifax.

CELERY. The demand is practically unlimited.

OTHER VEGETABLES AND ROOTS. Asparagus, cauliflower, peas, and rhubarb find a ready market in the canning factories. Cabbage average ten tons per acre, cucumbers (small), 5 tons; mangels, 432 bushels; carrots, 254 bushels; turnips, 394 bushels.

TOBACCO. The growing of tobacco in Ontario is chiefly localized in the counties of Essex and Kent, which produced in 1913 about 7 million lbs. It is also grown in Lambton and Prince Edward counties. The Burley variety predominates, which is suitable for the manufacture of chewing tobacco, and requires for curing the long summer and good fall found in Southern Ontario. Other varieties grown to a limited extent are the General Grant, Connecticut Seed Leaf and the Zimmer-Spanish, a few varieties of Havana Seed Leaf and the Brazilian variety. The yield per acre varies from 100 lbs. to one ton, safely averaging 1,200 lbs. Average price in 1916, 10½ to 13½ cents per pound. In 1910 prices ranged as high as 15 to 16 cents per pound. Cost of cultivation, including labor of grower, is estimated at \$50 per acre. Profits range from \$50 to \$75 an acre.

WINE. It is estimated one-third of annual vintage is manufactured into wine. Approximate annual output, 275,000 gals. Chief varieties made: Dry Catawba, Sweet Catawba (a communion wine), Isabella, St. Augustine, Port, Sherry, Claret, Golden Diana, Rhine Wines, Champagne. Chief manufacturers: T. G. Bright & Co., Niagara Falls; Pele Island Wine Co., Brantford; Hillrust Wine Mfg. Co., St. Catharines; Ontario Wine Co., St. Catharines; St. David's Wine Growers Co., Toronto; Niagara Falls Wine Co., Niagara Falls; S. Allen, Norwich; G. Girardot Wine Co., Sandwich; M. Guindon, Sandwich; La Compagnie Robinet Frères, Sandwich; A. Tournier, Sandwich; Marsh & Co., Sandwich. Market chiefly in Canada.

Agricultural and Fruit Districts

This chapter contains descriptions of some of the leading districts in Southern Ontario to which immigration is attracted and regulations affecting Provincial Lands. Accurate descriptions of districts will be received in future editions from the authorities of any county or district desiring to attract immigration.

ESSEX COUNTY. The most southerly portion of Ontario, situate between Lakes Erie and St. Clair, area about 46,000 acres. Land is slightly rolling at south; elsewhere flat, with a slight ridge running north and south. The soil is generally clay loam, with clay subsoil, well drained, and on ridges sandy loam, with gravelly subsoil, suitable for peaches. At base of point Pelee, near Leamington, are 2,800 acres of reclaimed marsh land, with black muck, 1 to 10 ft., and clay subsoil. County is well watered with rivers, creeks, and some artesian wells. Traversed by C.P.R. main line, M.C.R., Père Marquette and Wabash Rys., and 3 electric lines. Lake steamers call at Windsor, Kingsville and Leamington. There is a good supply of natural gas from wells in the county. Climate is mild, with long growing season free from early and late frosts. Leading crops are corn, oats, tobacco, winter wheat, hogs, sugar beets, peaches, apples, tomatoes, cucumbers, onions, the famous Petite Cote radishes and hot house vegetables. Many American families are migrating here from Ohio and buying up corn lands. Englishmen are acquiring fruit lands. Average price of land per acre: Good peach land, \$125 to \$150; peach land in bearing, \$500; apple land, about \$100; corn land, \$65 up; vegetable land, from \$100 to \$500; sugar beet land, \$65 up; tobacco land, \$100 up; mixed farming land, \$70 to \$125. See sugar beets, fruit farming, grain, tobacco, vegetables, under "Agriculture." See Descriptions of Amherstburg, Essex, Leamington, Sandwich, Walkerville and Windsor. Write to the Warden of Essex County, Walkerville, Ont.

FRUIT DISTRICTS. The commercial cultivation of peaches and grapes extends from Hamilton on Lake Ontario through the Niagara District to the Niagara River, thence westerly along Lake Erie, Lake St. Clair, the southern part of Lake Huron, a district embracing nine counties and over 300 miles in length. Pear and plum orchards are found everywhere in the counties bordering on the Great Lakes and the Georgian Bay. The belt in which apples and berries are grown for market extends

400 miles east and west and 50 to 150 miles north from the southern boundary. The following prices apply in the principal districts from east to west: (a) Along St. Lawrence River, \$40 to \$70 per acre; (b) Ottawa Valley from Prescott to Renfrew Counties, \$30 to \$70; (c) Prince Edward County, where there are 15 evaporators, \$50 to \$100; (d) Lake Ontario Counties, \$40 to \$90; (e) From Port Credit to Hamilton, \$150 to \$400; (f) Niagara District (see special description); (g) The counties bordering Lake Erie and southern part of Lake Huron. To Norfolk and Lambton Counties special attention has been drawn by successful fruit growers, co-operative associations and also land companies who are purchasing and planting large tracts of land for orchard purposes. \$25 to \$100; (h) Georgian Bay and Lake Huron, \$30 to \$70. These prices apply for farms of from 50 acres to 100 acres, and in most cases include buildings. For illustrated literature, write to the Dept. of Agriculture, Toronto.

IMPROVED FARMS. Fifty to a hundred acres can be purchased in the older portions of Ontario at from \$30 to \$100 per acre, the larger price including cost of buildings.

LIST OF FARMS for sale may be had on application to the Director of Colonization, Toronto.

KENT COUNTY. Land is mostly flat, with a little marshy ground in Dover, Tilbury and Chatham Townships. Soil varies from sandy to black loam and clay. Subsoil of various kinds. Good water supply from numerous springs and artesian wells, 60 to 140 ft. Natural gas is largely used. Good markets throughout the county, served by M.C.R., P.M.R., G.T.R., C.P.R. and Wallaceburg, Lake Erie & Chatham Elec. Ry. Corn is best crop, averaging 100 to 180 bush. per acre. Wheat averages 25 bush., oats 50 to 75 bush., barley 50 bush., roots 10 to 20 tons. Beans, tobacco, sugar beets and all kinds of fruits are grown. Kent Co. apples have won many prizes during the last 10 years, including 1st at Toronto Exhib. Pop. 55,995, comprising English, Scotch, Irish, French and a few Germans. Improved farms cost \$50 to \$150 per acre. Write Chairman Industrial Committee, Chatham, Ont.

LAMBTON COUNTY. Area 1,000 sq. miles, at the southern end of Lake Huron. Traversed by three railways, with branches running north and south. Population 4,500, of which half is urban. Apples, peaches, grapes and tender fruits are grown commercially, also corn, sugar beets and beans. Winter climate is mild owing to influence of waters of Lake Huron to the north. The land generally is level and watered by a number of streams. Soil, alluvial clay loam varying from friable to stiffer soils,

and overlaid in places by sandy loams, sand and gravel deposits. The county has been well advertised. For illustrated pamphlet, lists of farms for sale, etc., write Sec. Lambton Publicity Association, at Petrolia or Sarnia, Ont.

MIDDLESEX COUNTY. Area 757,683 acres, of which 87 per cent. is cleared. Watered by Thames River and smaller streams. Good soil prevails throughout, varying from deep clay loam, producing grain, to sandy soil, suitable for corn, fruit and vegetables, especially potatoes. Large numbers of horses, sheep, beef and dairy cattle, hogs and poultry are raised. Apples and all kinds of small fruits and vegetables thrive. Of grain, average crops per acre in 1912 were: Fall wheat, 21.3 bush.; oats, 41.5 bush.; barley, 30.9 bush.; peas, 17.2 bush.; corn for husking, 70.1 bush.; corn for silo, 9.96 tons. Bee-keeping is carried on extensively. At the Horticultural Exhibition, Toronto, 1912, all the comb honey put up by the Ontario Beekeepers' Assn. was produced in Middlesex. Several fox ranches have been established recently. The county is served by the C.P.R., G.T.R., Michigan Central, London and Port Stanley, Père Marquette and Wabash railways, and the London and Lake Erie Electric Line. There are good roads, telephones and rural mail delivery. The city of London and the towns of Strathroy and Parkhill afford good markets in the county. Write Industrial Commissioner, London, Ont.

NIAGARA DISTRICT. Lies along the southwestern shore of Lake Ontario, extending from Niagara to Hamilton, 44 miles. It varies in width from one mile at Hamilton to 14 miles from Niagara Falls to the mouth of the river. The winter climate is milder than in most other parts of Ontario. This is due to the low altitude above sea level (from 320 to 350 ft.), the shelter of the escarpment, which runs from end to end of the district, and the large body of water in Lake Ontario, open all the year round. There about 12,000 acres planted to grapes; 3,000 acres to apples and pears; 11,000 acres to peaches; 1,500 acres to plums and 3,000 acres to other fruits. There are about 50,000 acres of fruit land as yet unplanted. The district is traversed by the G.T.R., T.H. & B. Ry., and electric railways from Hamilton to Niagara Falls and from St. Catharines to Port Dalhousie, Niagara and Niagara Falls. A good country road suitable for autos and heavy traffic extends from Queenston and Niagara to Hamilton. Steamboat connections with Toronto at Hamilton, Grimsby, Port Dalhousie and Niagara. The Ontario Government has established an experimental farm at Vineland Station to develop new varieties of fruit. All fruits are successfully marketed in the North-west and apples

AGRICULTURAL AND FRUIT DISTRICTS 15

and pears in Europe. Peaches shipped to Great Britain have sold at from 30s. to 60s. a case of from 15 to 20 fruits. One-third of the grape crop is made into wine. There are 3 co-operative fruit growers' associations. Price per acre of peach orchards in bearing, according to age, from \$400 to \$1,000; apple orchards, from \$300 to \$500; vineyards, from \$150 to \$300; unplanted land, sandy loam with clay subsoil suitable for peaches, \$200 to \$400; unplanted apple land, \$100 to \$150; unplanted land suitable for grapes, \$100 to \$200. Social conditions are ideal. Write the Dept. of Agriculture, Toronto.

NORFOLK COUNTY. The land is undulating. Soil is similar to that in Niagara peach belt, sandy loam, some clay loam, generally clay or gravelly subsoil. Watered by numerous streams. Served by G.T.R. (3 lines), Wabash Ry., Michigan Central, T.H. & B. Ry. Leading products: Apples, some peaches, strawberries, small fruits, clover seed, vegetables, especially cucumbers, peppers, cauliflowers, etc., for local pickle factories and canneries. Markets at St. Thomas, London, Woodstock, Simcoe, Brantford, Hamilton, Toronto, all within 85 miles. Average price of improved farms, \$50 to \$150 per acre. Price of bearing apple and peach orchards, \$300 to \$500. This county has lately come into prominence as a fruit district. The Norfolk County Fruit Growers' Association has over 400 members. At the Provincial Fruit Show in Toronto, Norfolk County has on several occasions won first prize in sweepstakes for exhibit of boxes of apples, also a great number of first and second prizes. Chestnut, oak and pine are the prevailing commercial timber. Natural gas throughout county. On shores of Lake Erie are 2 famous duck and snipe preserves and good bass fishing. Write Jas. E. Johnson, Manager Norfolk Fruit Growers' Association, Simcoe, Ont., or J. E. Smith, District Representative Dept. of Agriculture, Simcoe, Ont.

New Ontario

NOTE.—Detailed descriptions of the resources: cities and towns and agricultural districts opened up for settlement in New Ontario will be found in the New Ontario Edition of Heaton's Provincial Booklet Series. Copies can be obtained from the Director of Colonization, Parliament Buildings, Toronto, or the Ontario Government Agent, 163 Strand London, W.C., England.

NEW ONTARIO. This name has been given to that part of Ontario lying north of the French River and Lakes Huron and Superior. Area 147,000 sq. miles of which

60 million acres is covered with spruce, black pine and poplar. The district has been made world-famous by the nickel deposits at Sudbury, the Cobalt Silver Mines and the Porcupine Gold Fields. It is an attractive field for prospecting (see under "Mining."). Only the fringe of the mineral belt has been touched. Moose, caribou, bear, beaver, wild duck and partridge are plentiful.

CITIES AND TOWNS. The principal cities and towns in New Ontario are Fort William, Port Arthur, Sudbury, North Bay, Cobalt, Porcupine, Sturgeon Falls, Sault Ste. Marie, Dryden, Fort Frances, Kenora, Englehart, Haileybury, New Liskeard, Charlton, Matheson and Cochrane.

GREAT CLAY BELT. From Lake Temagami westward, at the height of land, lies an area of rich agricultural land known as the Great Clay Belt, over 16 million acres in extent. The whole lies in latitude south of the Manitoba wheat fields, the most northerly point being south of Winnipeg.

CLIMATE. The winters here are cold, but the air is dry. There are no blizzards. Summer lasts from 1st May to October. Mean winter temperature varies from 10 above zero at Port Arthur to 0.4 below zero at Moose Factory; mean summer temperature from 64 at Kenora to 58.2 at White River. Seeding begins about 10 days later than in South Ontario, but the long period of sunshine per diem induces quicker growth. Late summer frosts are not much more frequent than in the Upper Ottawa Valley.

TRANSPORTATION. Easy transportation is afforded by a network of rivers and lakes which are full of fish. The region is traversed by the T. & N. O. R. and the C.P.R., while the C.N.R. and the G.T.P. are under construction. There are colonization roads in the districts which are open for settlement.

HOME MARKETS. Lumber and mining camps provide a market close at hand for all farm produce at high prices.

WINTER EMPLOYMENT. In winter money can be made in the lumber, mining and construction camps. The settler can pay for the labor of clearing by sale of pulpwood and lumber off the land.

FARM CROPS. Barley, oats and wheat are grown, for which early sowing is necessary. Potatoes, peas, parsnips, carrots and beets thrive everywhere. Cabbage does well. Tomatoes and pumpkins ripen in some parts. Fodder grasses, white and red clover do exceedingly well; alfalfa is cultivated.

FRUITS. Wild strawberries, raspberries, plums, currants, gooseberries, cranberries and blueberries grow profusely, Melons ripen, but occasionally need to be covered at night.

STOCK RAISING. The Clay belt is preeminently a stock raising country, but the industry has not yet been developed.

CROWN LANDS. Agricultural lands open for disposal in New Ontario may be obtained by:

- (1) **PURCHASE.**—160 acres may be sold to each applicant, who must be a male or sole female, head of a family, or a single man of 18 years. The price is 50c. an acre, payable $\frac{1}{4}$ cash, balance in three annual instalments with interest at 6%. Purchaser must go into actual residence within 6 months of date of purchase; erect a habitable house at least 16 x 20; clear and cultivate 10 per cent. of the area, and reside on the land for three years before patent issues. After the issue of patent another 160 acres may be purchased on like conditions. Proxy regulations permit a purchaser to place a representative on the land to perform settlement duties, but require double the amount of clearance and cultivation.
- (2) **FREE GRANT.**—Except in the Temiskaming District, certain lands considered suitable for cultivation and not valuable chiefly for pine timber or minerals may be located as Free Grants. A single man over 18, or head of a family, may locate 160 acres, and the latter may purchase an additional 80 acres at 50c. per acre each. In St. Joseph's Island and the Townships of Bonfield, Calvin, Cameron, Ferris, Mattawan and Papineau in Nipissing District, and Paipoonge in Thunder Bay, a single man may secure 100 acres free, a head of a family may locate 200 acres and buy an additional 100 acres; a single man may locate 100 acres and may swamp or rock and swamp up to 100 acres.

The conditions entitling a Locatee to patent are: (a) Clearing and cultivating 15 acres, of which at least 2 acres must be done each year; (b) erection of a habitable house at least 16 x 20 ft.; (c) continuous residence and cultivation for 3 years after location and thence to the issue of patent. Absence for not more than 6 months altogether in any one year may be allowed if sufficient reason is shown. For full information, forms, etc., write the Land Agents in the various districts.

Mining

MINERAL PRODUCTION. The annual Mineral Production of the Province of Ontario, for the past ten years as published by the Bureau of Mines, Ontario, is as follows:

1905.....	17,854,296	1910.....	39,313,895
1906.....	22,388,383	1911.....	41,976,797
1907.....	25,019,373	1912.....	47,607,063
1908.....	25,637,617	1913.....	53,331,647
1909.....	\$32,981,375	1914.....	46,295,959

Write for Bulletin, giving latest statistics of production, to Deputy Minister of Mines, Toronto.

PROSPECTING. There are tempting opportunities for acquiring wealth in the mineral lands situated in the eastern, northern and northwestern districts of Ontario. Discoveries are constantly being made of iron, nickel, cobalt, copper, silver, gold, and many other valuable substances, both metallic and non-metallic. The latest discoveries are of gold in the Porcupine and Kirkland districts. The mining laws require a prospector to take out a miner's license, the cost of which is \$5.00, which entitles him to stake out three mining claims of 40 acres each in every mining division. Usually two or more prospectors travel together. A birch-bark canoe costs from \$10 to \$20; a tent \$6 to \$8; cooking utensils, \$5; and blankets, \$4 to \$5 a pair. Provisions, such as flour, pork, tea, rice, etc., would cost about 35c. a day for each person. For mining laws, maps, reports, etc., apply to the Minister of Mines, Ontario.

ARSENIC. Refined arsenic is produced at the works of the Deloro Mining and Reduction Co., Deloro, and the Coniagas Reduction Co., Thorold, from the silver-cobalt ores of the Cobalt district. Arsenical ore is also found in the County of Hastings and the Temagami, Nipissing and Rainy River Districts.

CEMENT. The demand for Portland Cement is rapidly increasing. Beginning in 1891, the production has increased from 2,033 barrels, valued at \$5,082 to 2,665,650 barrels in 1914, worth \$2,931,190 with average cost of barrel at \$1.10 in 1914. Hitherto, marl has generally been used as one of the ingredients, but solid limestone of suitable composition is now taking its place. Write for Bulletin on Cement to Dept. Mines, Ottawa.

CLAY. All the decorative brick, terra cotta, roofing, tile, and sewer pipe made in the province, is from the Hudson River, Medina and other Devonian shales, which occur about Toronto, Hamilton, Beamsville, Milton, Brampton and Thedford. The Erie Clay, which is wide-

spread, yields a good class of white brick. An upper weathered band of this clay makes good red brick. Brick-making clays are abundant throughout the province, and many millions of brick are made every year. Write Deputy Minister of Mines, Toronto for Report on Clays and the Clay Industry of Ontario.

COBALT. The mineral occurs abundantly in the silver ores of Coleman Township (see under Silver). The chief use of cobalt is in the form of the oxide to produce the beautiful color known as cobalt blue. The Deloro Mining and Reduction Co., Deloro, and the Coniagas Reduction Co., Thorold, both manufacture, among other articles, cobalt oxide and metallic cobalt. The mines of the Cobalt district are now the chief source of the world's supply of cobalt.

COPPER. The principal source is the nickel copper mines (see under Nickel), but the sulphide deposits on the north shore of Lake Huron, which do not carry nickel, are of potential importance. The copper output in 1914 was 28,906,000 lbs.

CORUNDUM. Ontario has large deposits of corundum. The mineral is found in Renfrew and Hastings Counties. The Manufacturers' Corundum Company at Craigmont works these deposits. Write for Geological Reports to Deputy Minister of Mines, Toronto.

FELDSPAR. Quarries in Frontenac County are operated by Messrs. J. Richardson & Sons, Kingston, and McDonald Feldspar Company. The product is shipped to New Jersey and Ohio factories, for making enamelled ware. Total output in 1914 was 18,062 tons, valued at 55,686.

GOLD. The mines of the Porcupine district are now turning out gold, the yield of which in Ontario was formerly negligible. In 1914 the output was 268,942 ounces, worth \$5,529,767, the greater part of which came from two mines at Porcupine, the Hollinger and Dome. Other properties are now also producing gold. Rich ore has recently been found at Kirkland Lake, where the Tough-Oakes mine has been opened and equipped with a mill. Larder Lake, Swastika, Munro, West Shining Tree, Long Lake, and other camps in Northeastern Ontario are being prospected with fair promise of reward. There is also gold on Lake of the Woods, Seine River, Manitou Lake, Sturgeon Lake, and at many other points in the northwestern parts of the province. In August, 1915 a promising discovery was made at Kevkash Station, on the Transcontinental Railway, 297 miles from Cockrane.



Ontario's Dairy Products was estimated at \$40,000,000 in 1914. The Province exports more Cheese than the whole of the U.S. (See page 3)

GRANITE. In Hastings Co., near Bancroft, there are extensive beds of granite or gneiss, and dolomitic limestone of various tints, also a deep blue sodalite, suitable for inside decorative work. There are numerous occurrences of granite in the northern and eastern districts. See under Sodalite.

GRAPHITE. Refined graphite is produced in Renfrew and Haliburton Counties. Other important deposits occur in Halliburton, Hastings, Addington, Frontenac, Leeds and Lanark Counties, some of which have been worked.

GYP SUM. The principal deposits are along the Grand River, from which, in 1914, 74,300 tons of crude gypsum were mined. The Alabastine Co., of Paris, manufactures wall plasters, alabastine, and a variety of commodities. There are extensive beds on the James Bay slope, but as yet these are inaccessible.

IRON. The output of iron ore in 1914 was 240,059 tons, valued at mine at \$531,379. The bulk was hematite from the Helen Mine in Michipicoten, the remainder from Magpie and Moose Mountain and other deposits in Northern and Eastern Ontario. Iron ore is found in Wisner Township, north of Sudbury; at Burwash Lake, in Temagami Reserve, and east of Lake Nepigon and other localities. Write for Special Report, to Dept. Mines, Ottawa.

IRON PYRITES. In 1914 the output was 107,258 tons, worth \$264,722. Sulphur is dissociated from the iron by roasting and used in manufacture of sulphuric acid. See under Sulphur. Write for Report on Pyrites to Dept. Mines, Ottawa.

MARBLE. White crystalline limestone and variegated marbles, near Bancroft, are worked by the Ontario Marble Quarries Co., Ltd. Marble for the Parliament Buildings, Ottawa, was obtained from near Arnprior. Deposits are also being worked in Lanark County.

MICA. The production is principally in the hands of large operators, of which the General Electric Co., controlling the Loughborough Mining Co., is chief. They produce large quantities from the mines near Sydenham and Perth. The return for output 1914, chiefly of amber variety, was 349 tons rough cobbled mica, worth \$40,402. Canadian mica has a good reputation for flexibility, freedom from stains, etc. Export trade chiefly with U.S. and Great Britain. In Europe, Indian mica is a strong competitor. Write to Dept. Mines, Ottawa, for Special Report, "Mica, Its Uses, Occurrences, etc."

NATURAL GAS. In Haldimand Co., gas is piped from a large number of wells to Hamilton, Dundas, Brantford, Galt, Paris, and a number of other places. Welland County continues to produce much gas, supplying Welland and several towns and villages. Kent County supplies gas to Leamington, Chatham and other places, from the Tilbury, and Romney fields. The exportation of natural gas is prohibited.

NICKEL. Seventy per cent. of the world's output comes from the Sudbury district. Here ore is mined and treated by the Canadian Copper Co. and the Mond Nickel Co. It is first roasted in open air heaps to expel sulphur, then smelted into matte of nickel and copper, which is shipped, for final separation of the metals, by the Canadian Copper Co. to Constable Hook, N.J., and by the Mond Nickel Co. to Clydach, Wales. The Alexo Mine is being worked in Dundonald Township, on the T. & N O. Ry. The ore is a pyrrhotite similar to that of the Sudbury region and is being treated by the Mond Nickel Company at Victoria Mines. Returns of the industry for 1914 show: Ore smelted, 947,053 tons; Bessemer matte produced, 46,396 tons; nickel contents, 22,759 tons; value, \$5,108,997 Copper contents, 14,448 tons; value, \$2,080,034 Write for Report on Nickel Fields of Sudbury, with Geological Maps, to Deputy Minister of Mines, Toronto.

PEAT FUEL. The Dominion Government for a time operated an experimental plant at Alfred, Prescott Co., which is now being worked by private parties. Write for Report on Utilization of Peat Fuel to Dept. Mines, Ottawa.

PETROLEUM. The oil fields of Petrolia, Oil Springs and Tilbury East continue to produce, but at a diminishing rate. The demand for oil and oil products requires the importation of much more crude than is produced in the province. Returns for 1914 show crude oil produced, 7,437,356 imp. gals.; value, \$337,867.

PLATINUM AND PALLADIUM. These metals are found associated with the chalcopyrite in the nickel-copper ores of the Sudbury district. The latter is a silvery-white metal of the platinum group, which finds its chief use in the manufacture of astronomical instruments, watch-making and dental work.

SALT. The evaporating process is responsible for the total output of salt. The bulk comes from the wells of the Canadian Salt Company at Windsor. Other companies operate at Exeter, Goderich, Clinton, Wingham, Sarnia, Kincardine and Park Hill. The salt area extends through the counties of Middlesex, Huron, Bruce and Lambton. In 1914, output was 104,774 tons, worth \$498,383. At

present no rock salt is mined. A boring was made at the mouth of the Maitland River, at Goderich, by the late H. Y. Attrill, of 1,517 feet, in which six beds were passed through, with a total depth of 112 feet. The following analysis was made of the second bed, 25 feet thick, at a depth of 1,085 feet, by Mr. Sterry Hunt, LL.D., F.R.S.: Chloride of sodium, 99,687; Chloride of calcium, .032; chloride of magnesium, .095; sulphate of lime, .090; insoluble in water, .017; moisture, .079. This is said to be the purest salt in the world.

SILVER. The discovery of high-grade silver ores in the Cobalt District was made in 1903. Ores carry up to 3,000 and 4,000 ozs. of silver to the ton of 2,000 lbs. Some of the consignments have gone much higher. Carload lots of 30 tons have brought \$60,000, \$90,000 and \$110,000. A typical analysis gives silver 11%, cobalt 11%, nickel 4%, arsenic 44%. In 1914 shipments of ore from the Cobalt camp were 25,217,994 ounces, worth \$12,795,214. Valuable discoveries have been made on the Montreal River, at Miller and Gowganda Lakes, and south of Lorraine Township, where mines have been opened. Similar ores are also found on the north-west shore of Lake Superior. The intervening district offers many possibilities to prospectors. Write Deputy Minister of Mines, Toronto, for Report on Cobalt Silver District, with Geological Maps.

SODALITE. The Princess Quarries Co., near Bancroft, Hastings Co., quarry a stone of a beautiful blue color, highly esteemed for decorative work.

SULPHUR. Sulphur is found as a redundant ingredient of the nickel ores of Sudbury district. It occurs abundantly in the form of iron pyrites, and as such can be roasted by one of the processes employed in the manufacture of sulphuric acid. (See under Iron pyrites). The Nichols Chemical Co., of Canada, at Sulphide, manufacture sulphuric, nitric and mixed acids, using 5 carloads of pyrites a day. A large deposit of pyrite is being worked by the Northern Pyrites Co., near Lake Minnetakie, on the National Transcontinental Ry. For the opportunities for expansion in this industry in Canada, see Report Ontario Bureau of Mines, 1907.

TALC. Talc of first-rate quality is found near Madoc, where it is ground and exported in considerable quantities to the United States and Europe, for paper-making, cosmetics, etc. There were shipped, in 1914, 8,866 tons ground talc, value \$70,776.

ZINC. The Olden Mine, in Hastings County, raises a small quantity of ore yearly. There are unworked deposits on the main line of the Canadian Pacific Railway and elsewhere.

Boards of Trade Register for Southern Ontario

Extracts from the
Official Boards of Trade Register
Published in Heaton's Annual

NOTE.—Description of Towns in North Ontario will be found in Heaton's New Ontario Booklet. For copies write to the Director of Colonization; Parliament Buildings, Toronto; or the Ontario Government Agent, 163 Strand, London, W.C., England. For list of principal Cities and Towns see under New Ontario, page 15

Chief Town of County Judicial District marked ¶
Towns represented among Illus. Advertisements marked †

ACTON (Halton Co.), 35 miles w. of Toronto, on G.T.R. Hotels, Dominion, Station. 5 churches, public and high schools, park, 2 banks. Industries, 2 large tanneries, belting, gloves. Hydro-electric power. Alt. 1,198. Pop. 2,200.

NOTE.—Toronto Suburban Ry. under construction.

SPECIAL OPPORTUNITIES.—Cheap elec. power. Good sites with railway trackage. Liberal inducements on application. Write Sec. Bd. Trade.

¶ **ALEXANDRIA** (Glengarry Co.), on G.T.R. (C.P.R. at Green Valley Sta., 3 miles). Hotels, Ottawa, Grand Union \$2. County Registry Office, 2 banks. Waterworks and electric light. •Carriage factory, office furniture factory, coupling factory. Neighborhood supplies hardwood. Centre of fine dairy district. Alt. 256. Pop. 2,318.

SPECIAL OPPORTUNITIES.—Manufactures requiring hardwoods; foundry, land surveyor, feed store, baker and confectioner, butcher, first-class hotel. Exemption from taxes and other privileges to new industries according to payroll. Write the Mayor.

ALLISTON, (Simcoe Co.), on G.T.R., C.P.R., 40 miles n.w. of Toronto. Hotels, Windsor, Dominion. 4 churches, 2 chartered banks, 1 private. Industries, "silent salesman" factory, silverplate, woollen mill. Two flourmills. 2 machine shops, lumberyard, brickyard, electric light and waterworks. Alt. 723. Pop. 1,400.

SPECIAL OPPORTUNITIES.—Nursery garden. To manufacturers town offers free sites, free water, and fixed assessments. Write Pres. Bd. Trade.

ALMONTE (Lanark Co.), on Mississippi River, 30 miles w. of Ottawa, on C.P.R. Hotels, Davis, Belmont. 5 churches, town hall, 2 banks, park. Town owns elec. light system. Water power, 3,500 h.p. available. Industries include woollen, shoddy and knitting mills, soap works, stove and furnace co., iron works, Alt. 399. Pop. 2,500.

SPECIAL OPPORTUNITIES.—Textile factory. Inducements on application. Write Chairman Publicity Committee.

AMHERSTBURG (Essex Co.), on M.C.R., at head of Lake Erie, on Detroit River. D.B.I. ferries to Detroit, 18 miles. Hotels, Amherst, Lakeview, Union. Two banks, auto factory, knitting factory. Limestone quarries and soda ash plant in neighborhood. Alt. 593. Pop. *2,560.

SPECIAL OPPORTUNITIES.—Lumber and planing mill, dentist, manufactures of all kinds. Reasonable encouragement offered to new industries. Write Town Clerk.

ARNPRIOR (Renfrew Co.), on C.P.R., G.T.R., 37 miles w. of Ottawa, at confluence of the Madawaska and Ottawa Rivers. Hotels, Campbell, McPhee. Industries, 2 cheese factories, bricks and tiles, woollen mill, 2 lumber mills, builders' factory, 2 planing mills, mineral water factory, felt mill. Electric power. Good bass fishing on river known as Lac des Chats. Alt. 301. Pop. 4,450.

AURORA (York Co.), 25 miles n. of Toronto, on G.T.R. and Toronto and York Radial Ry., connecting with C.N.R. Hotels, Queen's \$2, Royal, Wellington. 5 churches, public and high schools, 1 , 2 chartered, 1 private. Town owns elec. light and r systems. Power from Niagara. Industries, planing , flour mil., cannery, boots and shoes (2), pulleys and clutches, agricultural implements, office furniture. Alt. 886. Pop. 2,500.

AYLMER (Elgin Co.), 25 miles from London, on G.T.R., Wabash, M.C.R. Hotels, Brown, Mansion, Central. 6 churches, public school, collegiate institute, 2 banks. Industries include canning factory, foundry, saw mills, bricks and tiles, butter and cheese, 3 builders' factories, condensed milk, shoes, pumps, and scales, machine shops, electric light, domestic water and fire plant owned by town. Surrounded by rich farming and fruit country. Alt. 2,300. Pop. 2,350.

SPECIAL OPPORTUNITIES.—Shoe factories, pork factories, cheese factories, creameries, woodenware, canning and

evaporating plants. Liberal inducements offered in taxation, water, light, etc. Natural gas, 10c. to factories, 23½c. to consumers. Write Sec. Bd. Trade.

BARRIE (Simcoe Co.), on n. side of Kempenfeldt Bay, Lake Simcoe, county town, on G.T.R. Steamboats to Orillia, Jackson's Point, etc. Hotels, Barrie, Simcoe, and 9 others, 11 churches, 4 public schools, 1 separate school, public library, 2 parks, 1 loan and savings co., 5 chartered banks, 1 private bank. Industries, 2 builders' factories, tannery, 3 machine shops and boiler works, bricks, carriages, flour mill, gas producers and gas engines, wicker works, shingle mill, boots and shoes, excelsior. Cheap hydro power. Surrounded by rich mixed farming and dairying district. Splendid summer resort. Sailing, boating, canoeing, bathing, etc. Alt. 726. Pop. 7,200.

SPECIAL OPPORTUNITIES.—First-class summer hotel, clothing, whitewear, furniture, woodenware, woollen mill. To bona-fide industries town offers free sites, free water and fixed assessments. Other liberal inducements on application. Write Sec. Bd. Trade.

BELLEVILLE (Hastings Co.), on Moira River, on n. shore of Bay of Quinte, Lake Ontario, on G.T.R., C.N.R. and C.P.R., on line of R. & O., Lake Ontario Nav. Co., and other lake S.S. Hotels, Quinte \$2.50 up, Anglo-American \$1.50, and others. 10 churches, high school and 6 others, business college, ladies' school. Public library, armories, 2 parks, 7 banks. City owns gas and waterworks. Elec. light and power by private co. Industries, 40, include cement works, locks and hardware specialties (2), nuts, bolts and horseshoes, canning, mining and hoisting machinery, foundry and boiler works (2), flour mills, stoneware, pottery, corsets, distilleries, shingle machines, soda water, shirts, furniture, paper, vinegar and jams, creameries, evaporator. Alt. 251. Pop. 11,893.

SPECIAL OPPORTUNITIES.—Smelter, concentrated milk products, rubber tires for commercial trucks, bricks, road materials. City offers to manufacturers free site and fixed assessment for ten years. Cheap power. Good labor conditions, cheap living. Write Sec. Bd. Trade.

BERLIN (Waterloo Co.), on G.T.R., 60 miles w. of Toronto, 35 miles from Hamilton. Elec. Ry. (freight and passenger) connects with C.P.R. at Galt (12 miles). Hotels, Walper, American, Bowman, Brunswick. 17 churches, 5 public schools, collegiate institute, R.C. college, library, hospital, court house, golf and country club, large park and ball grounds, 9 banks. City owns and operates street ry., water, sewerage, elec. light and gas. Industries,

over 135 factories, with annual output of \$10,000,000, including furniture, rubber goods, shirts, collars and whitewear, boots and shoes, wood working machinery, felt goods, buttons, trunks, furnaces, clocks, gasoline engines, baby carriages, bicycles, leather tanneries, 6 wholesale houses. An excellent agricultural district. Alt. 1,100. Pop. 18,000

NOTE.—Extension of Toronto Suburban Ry. line to Guelph has been constructed.

SPECIAL OPPORTUNITIES.—All industries employing male labor. Steady demand for all kinds of skilled mechanics. No labor troubles. Inducements offered new industries—free sites, exemptions, fixed assessments, etc., cheap hydro-electric power, etc. Write Sec. Bd. Trade.

BLENHEIM (Kent). Junction pt. of Père Marquette Ry. Coal distributing pt. for Rondeau Harbor on Lake Erie 5 m. U.S. and Dominion Ex. Hotel Sheldon \$2. 2 banks, elevators, bricks and tile. Nat. Gas 25c. per M. Hydro-electric power. Good boating, fishing and bathing at Rondeau Provincial Park, 10m. Surrounded by fine agricultural country producing tobacco, beans, seed corn, peaches, etc. See description of Kent Co. under Agric. and Fruit Districts. Alt. 681. Pop. 1,600.

BOBCAYGEON (on 2 islands between Pigeon Lake and Sturgeon Lake, in Victoria Co.), on C.P.R. Hotels, Rockland, Iroquois. 5 churches, 2 public schools, bank. Town owns elec. light system. Seat of Hillcroft School for small boys, Principal, W. T. Comber, B.A., Wadham College, Oxon. 2 trains and week-end special to and from Toronto, 85 miles. Industries, large flour mill, 2 lumber mills. Centre of summer tourist district. Alt. 854 (250 ft. higher than Georgian Bay). Pop. *900.

BOWMANVILLE (Durham Co.), on Lake Ontario, 42 miles e. of Toronto, on main lines of G.T.R., C.P.R., C.N.R., Terminus of Toronto and Eastern Elec. Ry. Hotels, Bowman, Balmoral \$2. 5 churches, 2 public schools, 1 high school, 3 banks. Gravity system supplies pure spring water. Sewerage plant. Industries include Goodyear Tire and Rubber Co. (750 hands), Dominion Piano and Organ Co. (200 hands), Bowmanville Foundry Co. (100 hands), glove factory, canning works, barley mill, flour mill, 2 cooperages. Fine natural harbor capable of accommodating largest lake vessels. The centre of a very rich apple-growing, mixed farming and dairying district. Splendid summer resort. Good boating of all kinds on lake and in harbor and lagoon, extending $\frac{3}{4}$ -mile inland. Good bathing; safe, sandy beach. Many fishing streams in vicinity. Alt. 150. Pop. 4,000.

NOTE.—Armouries under construction.

SPECIAL OPPORTUNITIES.—Automobile factory, brick yard, saw mill, contractors, real estate. Abundant elec. power available at \$12 to \$25 per h.p. Labor conditions excellent, low cost of living, cheap rents. Town offers liberal concessions to new industries. Write Sec. Bd. Trade.

BRACEBRIDGE (Muskoka District), on Muskoka River, 120 miles n. of Toronto, on G.T.R., daily boats from Gravenhurst in summer. Hotels, Queen's, Albion, British Lion, Dominion. Court house, library, 2 parks, 2 banks. Town owns light and water systems. Industries include tanneries (2), woollen mills, launches, sashes and doors (2), foundry, lumber mills (3). District supplies tanbark and all kinds of wood. Alt. 817. Pop. 3,000.

SPECIAL OPPORTUNITIES.—Boot factory, cloth factory (vacant factory building for sale suitable for either of these), furniture. Cheap elec. power. Town offers tax exemptions, and in some cases free sites. Write Town Clerk.

BRAMPTON (Peel Co.), 21 miles w. of Toronto, on G.T.R. and C.P.R. Hotels, Victoria, Queen's. 6 churches, high and public schools, public library, park, 3 banks. Town owns electric light, waterworks and sewerage. Hydro-electric power. All main streets paved with asphalt block. Industries include 4 cut-flower growing concerns—one covering 24 acres and employing 250 hands, boot and shoes (3), paper boxes, hosiery, loose leaf factory (largest in Canada), knitted goods, Pease Foundry Co. (furnaces), 2 planing mills, 2 flour mills, gummed paper, pressed brick. Neighborhood supplies brick clay and sand. The centre of a rich dairying and apple-growing district. Large horse, cattle and hog centre. Alt. 712. Pop. 4,000.

NOTE.—Electric Ry. to Toronto under construction.

SPECIAL OPPORTUNITIES.—Steel store-front foundry, automobiles, automobile tops and tires, bricks and tiles, boots and shoes, chairs, carriages, leather and woodworking industries, textiles, cigars. To manufacturers excellent shipping facilities. Town offers cheap water and power, tax exemptions and other liberal inducements on application. Write Sec. Bd. Trade.

BRANTFORD (Brant Co.), on Grand River, 60 miles s.w. of Toronto, 80 miles w. of Buffalo, N.Y. On G.T.R. main line and 3 branches; T.H. & B.R., connecting with C.P.R. and Mich. Cent. Ry.; L. Erie & N.R., operating with C.P.R. at Galt; Lakeport at Pt. Dover, on Lake Erie, 25 miles s. Elec. rys. to Hamilton (20 miles), Paris and Galt. Hotels, Kerby, Bodega, Belmont. County seat. 26 churches, 7 public schools, 2 separate, collegiate institute, blind school, Indian Institute, \$160,000 Y.M.C.A.

bldg., large parks, 11 banks. City owns hydro-electric system, water and sewerage works. 20,000 h.p. elec. power available at \$15 to \$28 per h.p. Nat. gas by private co. Industries, over 80 factories, including large agric. implement factories, iron and wooden industries, clothing, clay and cement products, automobiles, electrical fittings, etc., etc.; 22 wholesale houses. Centre of a mixed farming district. Neighborhood supplies shale, brick clay and sand. Social, golf and country clubs. Alt. 691. Pop., including immediate suburbs, 30,000.

NOTE.—Lake Erie and Northern Ry. to Pt. Dover to be operated by C.P.R.

SPECIAL OPPORTUNITIES.—Industries making goods to sell direct to consumer. Silk mills. Steady demand for mechanics, expert machinists, builders, domestic servants and laborers. Cheap elec. power. Special industrial water rate. Fixed tax rate for 10 years. Some free sites available. No labor troubles. Write Bd. Trade or Sec. Greater Brantford Bd.

BRIDGEBURG (Welland Co.), on Niagara River, opposite Buffalo, N.Y., on G.T.R., Mich. Central Ry., Wabash and N.Y. Central Rys. On route of all S.S. lines on Niagara River. Hotels, Spain's, Barnea, and 2 others. 4 churches (Epis., Meth., Pres., R.C.), park. Town owns water and sewerage systems. Elec. Light Co., Gas Co. Abundant elec. power. Nat. gas at 30c. per M., 2 banks. Industries include foundry, steel works, telephone construction co., display fixtures, skirt supporters, stretchers, account registers, stoves, varnish, shaving powder, hot-air registers, patent medicines. A fruit growing district. Good scenery and fishing. Alt. 587. Pop. 1,800.

BRIGHTON (Northumberland Co.), on Presque Isle Bay, on Lake Ontario, 24 miles e. of Cobourg, 20 miles w. of Belleville; on C.N.R., G.T.R., C.P.R. Steamers of R. & O. Nav. Co. and Lake Ontario and Bay of Quinte S.S. Co. to Toronto, Montreal, Rochester and principal U.S. and Canadian ports. Fine natural harbor, with 18 ft. of water. Hotels, Central, Clarendon \$2, Presque Isle (summer only) \$1.50. 5 churches, high and public schools, town hall, elec. light. Town owns gravity waterworks system. Abundant electric power, \$15 to \$20 per h.p. 2 banks. Industries include boats, canneries (3), sprays, foundry, machinery, evaporators (2), flour and feed mills (2), cooperage. Centre of an agricultural and fruit district. Neighborhood supplies pine, hemlock and spruce. Popular summer resort at Presque Isle Point, 3 miles across the bay, with good fishing, boating and bathing. Duck shooting in season. Alt. 303. Pop. 1,500.

NOTE.—New schools and large foundry under construction.

BROCKVILLE (Leeds Co.), on Lake Ontario, at outlet to St. Lawrence River, on G.T.R., C.P.R., C.N.R., 73 miles from Ottawa, 126 miles from Montreal. Hotels, Strathcona Hall, Revere, Grand Central. All S.S. lines going east and west call. 2 public wharves, 20 feet of water. 14 churches, court house, general hospital, St. Vincent de Paul hospital, insane asylum, opera house, public library; schools—5 public, 1 manual training, 1 domestic science, 1 collegiate institute, St. Alban's Boys' School; St. Lawrence Park, Victoria Park, Fulford Athletic Grounds. Headquarters Eastern Ontario Dairymen's Assn. 6 banks. Industries include stoves and hardware, carriages, paper boxes, automobiles, gloves and suspenders, agricultural implements, hats, biscuits and confectionery, engines, motor boats, 2 lumber companies, mineral waters. Local steamer plies several times daily to summer resorts on St. Lawrence River, where fishing, maskinonge, bass, pike, etc., is good. Bass and salmon trout fishing at Lakes Rideau, Charleston, Beverley, 2 hours by C.N.R. Pop. *9,372.

SPECIAL OPPORTUNITIES.—To new industries town offers tax exemptions and free sites, with cheap hydro-electric power, 1,000 h.p. Write Sec. Bd. Trade.

BURLINGTON (Halton Co.), at head of Lake Ontario, 30 miles w. of Toronto, on G.T.R., C.P.R. (freight only), electric ry. to Hamilton, 10 miles w.; Oakville, 12 miles e.; connection with Hamilton and Toronto Steamboat Co. at canal piers. Hotels, Brant, Queen's, Raymond. 5 churches, high and public schools, park. Electric light and power. Town owns waterworks. 2 banks. Industries include cannery, 2 basket factories, chemical works, 2 planing mills, evaporator. A rich fruit-growing district. Alt. 281. Pop. 2,100.

SPECIAL OPPORTUNITIES.—Industries of all kinds. Abundant elec. power. Inducements on application. Write Clerk of the Municipality.

CAMPBELLFORD (Northumberland Co.), 32 miles w. of Belleville, on G.T.R. and Trent Valley Canal. Hotels, Windsor, St. Lawrence. 5 churches, public and high schools, library, 2 banks. Town owns elec. light and power, water and sewerage systems. Industries include bridge works, woollen mills, shoes, pulp and paper mills, flour mills, elec. power co., sashes and doors (2). Surrounded by rich fruit and mixed farming district. Alt. 596. Pop. 2,900.

CARLETON PLACE (Lanark Co.), on C.P.R., 27 miles from Ottawa. Hotels, Mississippi \$1.50, Queen's \$1.50.

Industries include stoves, knitted goods, flour mills, lumber co.. C.P.R. shops, employing 150 men. Good fishing and hunting. Alt. 447. Pop. 4,000.

SPECIAL OPPORTUNITIES.—Furniture factory, foundry and machine shop, cigar factory, farm implements, woollen mill. Exemption from taxes and free sites offered to new industries. Write Sec. Bd. Trade.

CHATHAM (Kent Co.), on Thames River, 45 miles e. of Detroit, Mich., on G.T.R., C.P.R., Wabash, Père Marquette and Mich. Central Rys. Elec. ry. to Wallaceburg, 18 miles, and Lake Erie, 14 miles. Deep water navigation gives communication with Great Lakes. Hotels, Garner, Sanita (mineral baths), Rankin, and others. Churches of all denominations. 3 large public schools, collegiate institute, Ursuline Convent boarding school, business college. City and country buildings, market hall, armories, 2 large parks. Hydro-electric light and power, unlimited quantity. Water and sewerage systems. Nat. gas, 12c. per 1,000 ft. for power; \$3.00 per h.p. per year of 300 days for 10-hour service; 25c. for domestic use. 2 daily papers, 4 theatres, 5 banks. Industries, about 40 factories, including pad and textile works, bricks and tiles, wheels, malleable steel, machine shops, carriages, flour mills, woollen mills, lumber mills, reinforced concrete, springs and axles, etc. Centre of a very rich mixed farming and fruit district (peaches, grapes, apples, etc.). Numerous summer resorts with fine shooting, fishing, etc., easily reached by boat or electric ry. Moderate climate. Pop. 13,000.

SPECIAL OPPORTUNITIES.—Machine shop and foundry for sale. Cl ap power. To new industries city offers free sites with railway siding connections. Good labor conditions. No unions or strikes. Other inducements on application. Write Chairman Industrial Committee, or Pres. Bd. Trade.

CHESLEY (Bruce Co.), on north branch of Saugeen River, 122 miles n.w. from Toronto, on G.T.R. Hotels, Commercial, McDonald. 8 churches, public and high school, 2 banks. Industries include saw mill, flour mill, woollen mill, 2 furniture factories, iron and brass bedsteads, bricks and tiles, chairs, mattresses, church furniture, machine shop, butter factory. Alt. 980. Pop. 1,930.

SPECIAL OPPORTUNITIES.—Special lines of furniture, starch factory, shirt factory. Town offers tax exemptions, free sites. Write Town Clerk.

CLINTON (Huron Co.), 130 miles w. of Toronto, 50 miles n. of London, on G.T.R. Hotels, Rattenbury, Normandie.

8 churches, public and model schools, collegiate institute, town hall, library, park, 2 chartered banks, 1 private. Town owns light and water systems. Elec. power, 600 h.p. available, rate \$40. Industries, planing, flour and knitting mills, automobiles, pianos and organs, boys' clothing, salt. Good fishing and scenery. Alt. 582. Pop. 2,500.

SPECIAL OPPORTUNITIES.—Woodworking plant, creamery or cheese factory. Special inducements on application. Good labor conditions. Write Town Clerk or Sec. Bd. Trade.

COBOURG (Northumberland Co.), on Lake Ontario, 70 miles e. of Toronto, on G.T.R., C.N.R. and C.P.R. Fine deep-water harbor. Steamship connections with Rochester, 55 miles; Toronto, 60 miles; Montreal and principal U.S. and Canadian ports. Daily all-year ferry service to Rochester, carrying 28 loaded cars. Hotels, Dunham, British, Arlington, Columbian and Cedarvale (summer only), and others; 6 churches, public and separate schools, magnificent town hall containing opera house, jail, house of refuge, Provincial Asylum, 2 large parks, horse show grounds, 4 banks. Electric power (Seymour Power Co.). Electric light, water and sewerage systems. Industries include Crossen Car Works, John Dick Co. Woolen Mills, Cobourg Matting Factories (2), woodworking, wire fences, canning and smaller industries. Neighborhood supplies various kinds of lumber. Surrounded by very rich mixed farming, dairying and apple-growing district. Popular summer resort, frequented by families from U.S.A. and Canadian cities. Good fishing and shooting at Rice Lake, 12 miles north. Good boating and golf links. Alt. 295. Pop. 5,300.

SPECIAL OPPORTUNITIES.—Excellent shipping facilities, cheap electric power and cheap fuel (insured by ferry service to Rochester). Good factory sites on G.T.R., C.N.R., C.P.R. and lake front. Labor is cheap. Town offers liberal inducements on application. Write Sec. Bd. Trade.

COLLINGWOOD (Simcoe Co.), port on Georgian Bay, on G.T.R. Direct S.S. communication with all Canadian and U.S. ports. 20 feet of water in harbor, one of the best protected in chain of lakes. Hotels, Globe, Arlington and 5 others. Town owns waterworks, electric light, sewerage and hydro-electric power. 4 public schools and 1 separate school, collegiate institute, Carnegie library, Y.M.C.A., 2 parks, armoury, 2 skating and curling rinks. Govt. Rifle Range, Govt. Fish Hatchery, 4 banks, fine post office. Largest steel shipbuilding yards and dry docks in Canada—largest freight vessels in British Empire have been built here; wire nail and fencing works, \$1,000,000 meat pack-

ing and canning plant, 3 planing mills, ships' cabins and hardwood fittings, 2 foundries and machine shops, biscuits, brooms, 2 large saw mills, fruit and vegetable cannery, tinnery, bricks, apple evaporator, small wooden and metal boats, flour mill, grain elevator, cold storage and grocery warehouse, and the largest fruit and vegetable farm in Canada. Alt. 587. Pop. 8,000.

SPECIAL OPPORTUNITIES.—Steel mill for ship-plate, angle iron, fish plates, rails and rods. Fully equipped steel plant (Northern Iron and Steel Co.) which has never been operated, representing outlay of over \$250,000, is for sale at nominal figure, with 27½ acres of land very close to water front, with water front switch connection and siding. Also large saw mill with docking facilities. Town offers liberal assistance to purchaser. There is a very large local trade in rivets, rods, plates, angle iron, etc. Any industry, particularly those working in steel and wood. Grain elevator for distribution of grain to milling centres. To bona-fide industries town offers free site, fixed assessments and other liberal inducements. Cheap hydro power. Good openings for mechanics and their families. Write Sec. Bd. Trade.

CORNWALL (Stormont Co.), on St. Lawrence River, 67 miles w. of Montreal, 55 miles e. of Ottawa. On G.T.R. and Ottawa and N.Y. Ry. Terminus of Cornwall Canal. S.S. connection with principal ports. Hotels, King George \$2.50, New Windsor, and 2 others. 9 churches, public, separate and high schools, commercial college. Town hall, 3 parks. Elec. light and gas. Town owns water and sewerage systems. Elec. power, 200 h.p. available at \$20 per h.p. up. Water power, about 200 h.p. 4 banks. Industries, furniture, cotton, bedsteads, lacrosse, chairs, paper, pulp, and paper mill. A mixed farming and dairying district. Good supply of lumber. Fishing and hunting. Summer resort at Stanley Islands, 8 miles distant. Pop., with suburbs, 9,000.

NOTE.—Power transmission line carrying 60,000 h.p. under construction. Cornwall and Hawkesbury Ry. Co. building to connect with C.P.R. at St. Polycarpe Jct.

DESERONTO (Hastings Co.), on Bay of Quinte (Lake Ontario), 130 miles e. of Toronto, 200 miles w. of Montreal. On C.N.R. connecting with G.T.R. and C.P.R. Steamship connection with all Canadian and U.S. ports on St. Lawrence River and Great Lakes. Hotels, Arlington, Deseronto, Stewart \$1.50 4 churches, high and public schools. Public library, recreation park. Town owns gas, sewerage, and water systems. Electric light. Abundant electric power, cheap rates on sliding scale; 2 banks. In-

dustries include blast furnace, cannery, machine shop, saw mills, boxes, cars, matches, sashes and blinds. Safe, deep water harbor to full Welland Canal depth of future. Extensive water front. Centre of a rich fruit-growing district. Neighborhood supplies abundant lumber. An attractive summer resort. Good bathing, boating and fishing. Alt. 252. Pop. 3,200.

SPECIAL OPPORTUNITIES.—All industries, especially those requiring large supplies of raw materials in bulk. Steel and iron industries, pulp and paper mills, cement works, textiles, smallwares of all kinds. Cheap coal and elec. power. No labor troubles. Cheap labor, male and female. Cheap sites and other liberal inducements on application. Write Pres. Bd. Trade.

DRESDEN (Kent Co.), on Sydenham River, navigable, and Père Marquette Ry. Hotels, Wescott, Queen's. Industries, grist mill, foundry, builders' factory, bentwood, 2 flour mills, cannery, flax mill, bricks, and tiles, planing mill, 2 elevators, creamery. Good farming country, producing corn, tomatoes, potatoes, sugar beets, tobacco. Alt. 604. Pop. *1,551.

DUNDAS (Wentworth Co.), on G.T.R., T.H. & B. Ry., Electric Ry. from Hamilton, 5 miles, hourly service. Desjardines Canal connecting with Lake Ontario. Hotels, Collins, Melbourne, Osborne, Riley House. 5 churches, public, separate and high schools, armoury, public library, 25-acre park. Cataract Power Co. and hydro-electric power, nat. gas at 35c. per M ft., water system, 3 banks. Industries include quarry, tanneries, small tools, baskets, gloves, malt, clothing, hosiery, doors, yarns, machine tools, builders' factory, knitting factory, flour mill, cement brick, barber supplies, church and school furniture, willow furniture, gasoline engines. Alt. 316. Pop. *4,297.

SPECIAL OPPORTUNITIES.—Cheap manufacturing sites, with assessment fixed at cost of land. Write Chairman Industrial Committee.

DUNNVILLE (Haldimand Co.), on Grand River, 40 miles w. of Buffalo, N.Y.; 34 miles s.w. of Hamilton. On G.T.R., connected with Lake Erie (5 miles) by Grand River, navigable to Dunnville. Hotels, Victoria, Queen's. 5 churches, park town hall. Town owns sewerage system. Elec. light by private co. Elec. power at \$25. Nat. gas, 27c. to manufacturers; 25c. domestic. 3,000 h.p. water power available. 3 banks. Industries, knitting mills (2), hammocks, engines, foundry, bricks, woollen mills, ice, sewing machines, cannery, evaporator, planing mill, flour mills (2), machine shops (2), cement blocks and bricks,

boats. Neighborhood supplies lumber and stone. Good scenery, fishing and shooting. Gun club, tennis, etc. Pop. 3,500.

SPECIAL OPPORTUNITIES.—Manufacturers can develop power from nat. gas for \$7 per h.p. Liberal inducements to new industries. Write the Mayor.

DURHAM (Grey Co.), on Saugeen River, C.P.R. and G.T.R., 28 miles south of Owen Sound. Hotels, Hahn, Central, Middaugh. 5 churches, public school. Carnegie library, 2 banks. Industries include grist mill, woollen mill, planing mill, oatmeal mill, tannery, foundry, furniture factory, Portland cement works, saw mills. Pop. *1,579.

NOTE.—Hydro-Elec. power from Eugenia (25 miles) expected.

SPECIAL OPPORTUNITIES.—Sash and door, iron bedstead, mattress and bed spring factories. Tax exemptions, free sites, loans without interest and other inducements offered. Developed and undeveloped water power available, and some electricity. Low tax rate, cheap living. Write Mayor.

ELMIRA (Waterloo Co.), on C.P.R. and G.T.R., 12 miles n. of Berlin. Hotels, Zilliax House and 2 others. 7 churches, high and public schools, 1 free public library. Municipality owns electric light and waterworks. Hydro-electric power. 2 banks. Industries include furniture factory, foundry and machine shops, 2 felt hoot factories, transmission supplies (wood split pulleys, hangers, etc.), saw and planing mills, brick yard, 2 grain elevators (cap. 125,000 bushels). Surrounded by very rich general mixed farming district. Alt. 1,142. Pop. 2,250.

SPECIAL OPPORTUNITIES.—Excellent shipping facilities and labor conditions. Steady supply of local labor—both male and female; good openings for skilled mechanics. Factory sites on C.P.R. and G.T.R. Town offers free sites, tax exemptions, free water and other inducements. Write Sec. Bd. Trade.

ELORA (Wellington Co.), at confluence of Grand and Irvine Rivers, on C.P.R. and G.T.R., 13 miles n.w. of Guelph. Hotels, Commercial, Iroquois, Royal. 4 churches, high and public schools, Carnegie library, armoury, 2 banks, Hydro-Elec. power and light. Industries include cabinet, carriage, sash and door, and agricultural implement factories, saw mill, 2 furniture factories, tannery, textiles, white lime factory. Beautiful surrounding scenery. Alt. 1,270. Pop. 1,197.

LONDON—



COMMERCE—All civic records show progress, materially increased in the last few years, and maintained since the war started. Population 58,056. Home market 1,000,000 people. Dominion centre for economic distribution. Educational and ecclesiastical centre. Presents to-day unlimited opportunities for money and enterprise.



RESIDENTIAL—A City of Homes, where life is worth living. Has all the conveniences of a modern city, and attractions peculiarly its own. Picturesque surroundings. Farmers' market, three times a week. 80 per cent. of industrial workers own their homes.

Read description of London on page 47

Write for Free Report
and special offer reducing initial cost of

GORDON PHILIP, - INDUSTRIAL

CANADA'S ECONOMIC MANUFACTURING and DISTRIBUTING CENTRE



RECREATION—"The Forest City," famed for the beauty of its parks, avenues and boulevards and for its hospitality. A convenient convention centre, with 4 trunk and 7 branch lines, including city-owned road to London's harbour on Lake Erie—Port Stanley.



MANUFACTURES—Over 250 factories on full time and annually increasing plants. Unusual combined advantages for new industries, cheap power, (Hydro), cheap sites, plentiful labor, unsurpassed transportation, competitive water route, fixed assessment, nominal taxes and other inducements.

Read description of London on page 47

on any line of industry,
establishment of desirable new industries.

COMMISSIONER, LONDON, ONTARIO

SPECIAL OPPORTUNITIES.—Large factory with good water power for sale, suitable for furniture or pianos. Write Pres. Bd. Trade.

ESSEX (Essex Co.), on M.C.R., Electric Ry. to Kingsville, 12 miles; Windsor, 16 miles, and Leamington, 17 miles. Hotels, Aberdeen Grand Central. 5 churches, public and high schools, 1 bank. Industries, canning and preserving co., bricks and tiles, 3 grist and flour mills, lumber co. Natural gas 25c. per M ft. Alt. 643. Pop. 1,398.

SPECIAL OPPORTUNITIES.—Boring for oil, gas or petroleum, farm implements, tiles, automobile top factory. Town offers tax exemptions to new industries. Write Sec. Bd. Trade.

EXETER (Huron Co.), on G.T.R. Hotels, Central, Commercial. 4 churches, 2 parks, 2 banks. Town owns waterworks. Elec. light by private co. Industries, flour mill, road machinery, builder's supplies, canning, clothing, wholesale stationery. Alt. 872. Pop. 1,535.

FENELOE FALLS (Victoria Co.), on G.T.R. Steamboats to Coboconk and Rosedale. Hotels, Kawartha (summer only), Mansion, Brooks, McArthur. Churches of all denominations, public and high schools. Town owns elec. light and power plants. Water power close to timber supplies. 2 banks. Industries, 2 flour mills, saw and shingle mills, woollen mill, boats, 2 planing mills. Summer resort. Alt. 845. Pop. 1,300.

SPECIAL OPPORTUNITIES.—Tannery, knitting and woollen mills, woodenware, shoe factory. Cheap power. Free sites. Write Pres. Bd. Trade.

FERGUS (Wellington Co.), on Grand River, 13 miles n.w. of Guelph, on G.T.R. and C.P.R. Hotels, Commercial and 2 others. 5 churches, high and public schools, opera house, library. Town owns water systems and Hydro-Electric light, 2 banks. Industries, farm accessories (2), cereal mill, lime and building stone, marble works, saw mill. Pop. 1,600.

SPECIAL OPPORTUNITIES.—Town offers loans to new industries. Write the Mayor.

FOREST (Lambton Co.), on G.T.R. 3 banks. Industries include saw mill, flax mill, builders' factory, canning factory, stave mill, basket factory, flour mill, foundry, machine shop. Alt. 711. Pop. *1,444. Write Pres. Bd. Trade.

FORT ERIE (Welland Co.), on Niagara River, $\frac{1}{2}$ mile from Buffalo, N.Y., 100 miles s. of Toronto. On G.T.R.

and Mich. Central Ry. Hotels, King Edward \$2, Anglo-American, Queen's. 5 churches, public school, city hall, public library. Town owns elec. light and water systems. Abundant elec. power. Nat. gas at 30c. per thousand cub. ft. Bank. Planing mill and lumber yard, 5 stores. An agricultural and fruit-growing district. Summer resorts nearby with fishing, bathing, etc. Pop. 1,500.

SPECIAL OPPORTUNITIES.—Building houses to rent. To new industries town offers exemptions in tax and water rates. Write Town Clerk.

FORT WILLIAM (Thunder Bay Dist.), at head of lake navigation on Lake Superior, bulk-breaking point for all incoming and outgoing freight of Western Canada; lake terminus on C.P.R., G.T.P.; on C.N.R. and Mt. McKay and Kakabeka Falls Ry. Inter-city electric ry. to Port Arthur. 3 miles. All lines of passenger and freight boats on upper lakes call. Hotels, Avenue \$3.50 up, Victoria, St. Louis \$3 up, Empire \$2.50 up, and 9 others. 15 churches, 10 schools, collegiate institute, 12 parks, city hall, 3 fire halls, court house, 2 hospitals, library. Municipality owns 31 miles of street ry., telephone, light, water and sewerage systems. Hydro-electric power, 45,000 h.p. developed; 100,000 still available. Rate for 24-hour service, \$25 per h.p. per ann. 10 chartered banks, 19 elevators (capacity 28,150,000 bushels). Industries include Ogilvie Flour Mills (capacity 15,000 bbls. per day), Can. Car and Foundry Co., stove ranges, bricks (5), aerated water, sashes and doors, brooms, brewery, machine shop, car wheels, 5 cement blocks, shipbuilding, power co., 2 electric light cos., etc., etc. 50 wholesale houses. District supplies iron ore developed by Atikokan Iron Co. blast furnace; silver, copper and pulpwood. Good farming and lumbering country. Fine scenery, fishing and hunting. Alt. 607. Pop. 30,000.

SPECIAL OPPORTUNITIES.—Heavy iron and steel industries of all kinds, agric. implements and machinery, automobile factory, sashes and doors, interior finish plant. City offers liberal inducements in the way of sites, tax exemption, etc. Write Secy. Bd. Trade or City Clerk.

GALT (Waterloo Co.), on C.P.R., G.T.R., 25 miles from Hamilton, 60 miles from Toronto. Electric Ry. to Preston, 3 miles, Hespeler 5 miles, Paris 12 miles, Berlin 13 miles, Waterloo 14 miles, Brantford 15 miles. Hotels, Iroquois, Royal, Imperial. 9 churches, public library, Y.M.C.A., 4 large parks, 6 banks. 60 factories, including aerated waters, beds, boilers, boots, boxes, brass goods, builders' supplies, edge tools, engines, farm implements, hats, leather, lime, lumber, malt, pumps, safes, soap and

oils, stoves, nails, taps, underwear, wheels, silk and cotton labels, cement machinery, metal goods. Rich agricultural district. Neighborhood supplies lumber, limestone and sand. Alt. 927. Pop. 12,000.

SPECIAL OPPORTUNITIES.—Manufactures of all kinds. Sites with railway interswitching sidings obtainable. Tax exemption, loans and free sites. Natural gas 35c. per M ft. Hydro-electric power at 4c. per k.w. Write Sec. Bd. Trade.

GANANOQUE (Leeds Co.), at junction of Gananoque and St. Lawrence Rivers, on G.T.P. Direct S.S. communication with Toronto, Montreal, Rochester and principal Canadian and U.S. ports. Hotels, Gananoque Inn, Provincial, International. 7 churches, 1 high and 3 public schools, yacht and canoe clubs, park, 2 banks. Town owns water, sewerage and fire protection systems. Industries, 20, include elec. light and power plant, cheese factory, clothes wringers, hinges and nails, hammers, gasoline engines, carriage mountings, hardware, steel and wood hames, springs and axles, shovels, grist mill, carriage wheels, rivets, corset steels, bolt and carriage forgings, builders' factory, electric meters, 2 boat builders, 2 paving block granite quarries, felt goods, iron and brass foundries, 2 harness factories. A popular summer resort. Alt. 300. Pop. *3,764.

NOTE.—Elec. power from Kingston Mills will be installed shortly, providing 1,000 h.p. at low rates.

SPECIAL OPPORTUNITIES.—Cheese box factory, malleable iron works, a good \$1 a day boarding house, planing mill, brick yard. Water power from Gananoque River. Inducements offered on application. Write Sec. Bd. Trade.

GEORGETOWN (Halton Co.), on G.T.R. Hotels, Bennett House, Clark House. 5 churches, 2 banks. Industries include 3 paper mills, 2 knitting machine factories, boots and shoes, saw mill, gloves, acetylene gas machines, foundry and machine shop, carriages. Alt. 846. Pop. 1,720.

SPECIAL OPPORTUNITIES.—Building mechanics' houses. Write Town Clerk.

GODERICH (Huron Co.), county town, at mouth of Maitland River, on Lake Huron, 133 miles n.w. of Toronto, on C.P.R., G.T.R., boats to Detroit, Sarnia and South and Upper Lake ports. Hotels, Bedford, British and 4 others. Fine schools and churches. Niagara electric power. Industries, flour mill, foundry and machine shop, 2 elevators, knitting factory, lumber mill, organ and bath fixtures, furniture, builders' factory, salt works, clothing, apple evaporator, road machines, baby carriage factory,

grain door factory. The neighborhood supplies limestone, salt, lumber, sand suitable for glass or cement brick, clay suitable for tile and red or white brick. A favorite summer resort, with a wonderful climate. Alt. 729. Pop. 5,000. Write Sec. Bd. Trade.

GRAVENHURST (Muskoka Dist.), at foot of Muskoka Lake, on G.T.R. Hotels, Empress, Albion, Station. For summer boarders and tourists only, Fern Glen, Sunset Pt., Gull Lake, Pine Dale, besides many other boarding-houses and summer resorts. 3 sanitariums for consumptives 2 miles away on shore of Muskoka Bay. Waterworks and electric light, electric power. Industries include soda water, carriages, 2 boatbuilders' factories, 2 lumber and saw mills, interior fittings, foundry, crushed stone. Alt. 850. Pop. 2,200.

SPECIAL OPPORTUNITIES.—Manufactures using pine, hemlock and birch. Factory sites available near G.T.R. Water power, 750 available, 4,000 to 5,000 h.p. undeveloped. Electric power from South Falls. Town offers to new industries tax exemptions or fixed rate, site. Power rates \$15.00 per h.p. Opportunities for summer cottages on Gull Lake, 300 yards from centre of town. Write Sec. Bd. Trade.

GRIMSBY (Lincoln Co.), on Lake Ontario, 18 miles e. of Hamilton, 18 miles w. of St. Catharines, on G.T.R. Elec. Ry. to Hamilton. Hotels, The Village Inn and Grimsby. 5 churches, public and high school, park. Electric light. Village owns water system. 3 banks. Industries, canneries (2), electric fittings, stoves, planing mills (2), large printing works, 2 basket factories. A fruit-growing district, famous for peaches, grapes and apples. Alt. 287. Pop. 1,800.

GUELPH (Wellington Co.), on River Speed, 48 miles w. of Toronto, 28 miles n. of Hamilton, on C.P.R., G.T.R. Hotels, Wellington, King Edward, Royal, Commercial. 14 churches, 10 schools, collegiate institute. Seat of Ontario Agricultural College and Macdonald Institute (Domestic Science). Students in 1915, 1,184. This institution is visited annually by 50,000 farmers. Annual Fat Stock show held in December, visited by from 10,000 to 20,000 farmers and stock breeders. City owns 8 parks, city hall, light, water and sewerage systems, street ry., and Guelph Junction Ry. (15 miles). Elec. power from Niagara Falls, at \$22 to \$26 per h.p. per ann. Gas for manufacturing purposes, 75c per 1,000 cub. ft. 7 banks, 2 loan and savings cos., 4 wholesale houses. Industries about 80, including pianos, machinery, carpets, meat packing, clothing, carriages, woodworking, steel and wire goods.

†See illustrated advertisement on page 46.

food products, clean food counters, steel tubing, meta store fronts, caskets, ironware, brewing, etc., etc. Centre of a rich agricultural district. Trout fishing, shooting, tennis, golf, cricket, etc. Pop. about 17,400.

NOTE.—Toronto Suburban Ry. from Toronto under construction.

SPECIAL OPPORTUNITIES.—Any industry except the very heavy lines using coal and iron as raw materials. Radial railway. City offers free sites, low taxes, cash bonus and loans at low rate of interest. Labor conditions ideal. Cheap power, water, gas and elec. light. Write City Clerk.

THAMILTON (Wentworth Co.), on Burlington Bay, western extremity of Lake Ontario, founded about 1810, on G.T.R. T.H. & B.R., C.P.R. Electric Ry. to Grimsby 18 miles, Brantford 25 miles, Oakville 20 miles. S.S. lines to Montreal, Ft. William, Toronto. Hotels, Royal, Waldorf, and others. 75 churches, 40 schools, 28 banks. City owns water and sewerage systems. Power and light by Niagara Falls System, Cataract Power Co. and Nat. Gas Co. About 400 factories, including steel, iron, cotton and woollen goods, agricultural machinery, tobacco, electrical wires and cables, clothing, store fixtures, stoves, ploughs, elevators, boots, furniture and many other articles. 40 wholesale houses. Centre of fruit district. Beautiful scenery. Aquatic sports, golf, tennis, etc. Alt. 323. Pop. 101,344.

NOTE.—New \$1,000,000 hotel, hospital, 4 factories under construction.

SPECIAL OPPORTUNITIES.—Manufactures of iron and steel. Cheap power. Good labor conditions. Manufacturers' Annex set apart with special tax rate. For free pamphlet write Commissioner of Industries.

HANOVER (Grey Co.), on Saugeen River, G.T.R. and C.P.R. Hotels, Reid, Queen's, Scarboro. 9 churches, 3 schools, public library, 2 banks. Industries, 8 furniture factories, bricks, cement, woollen mill, flour mill, shirt factory. 600 h.p. water power available. Pop. 3,600.

NOTE.—Hydro-electric power from Eugenia Falls under construction.

SPECIAL OPPORTUNITIES.—Bedstead, whitewear and iron-working factories, boot and shoe factories, wollen mill. Write the Mayor.

HARRISTON (Wellington Co.), on Maitland River, on G.T.R., C.P.R. Hotels, Royal, and 3 others. 4 churches, high and public schools, library, park. 2 banks. Town

owns light and water systems. Industries include stoves, planing mill, furniture, wood novelties, grist mill casket co., cold storage plant. Alt. 1,256. Pop. 1,500.

HAWKESBURY (Prescott Co.), on Ottawa River, half way between Montreal and Ottawa, on G.T.R., and C.N.R. Hotels, Royal, King Edward, and 5 others. 3 churches, public, separate and high schools. Elec. light and power plant. Town owns water and sewerage systems. 2 banks. Industries include lumbermill, pulp and paper mills, sash and doors, clothing. Neighborhood supplies lumber and stone. Alt. 141. Pop. 4,600.

NOTE.—Inter-provincial bridge over Ottawa River expected in 1916.

SPECIAL OPPORTUNITIES.—Marble works, foundry, pianos, boot and shoe, carpet and furniture factory. Water power awaiting development. To new industries town offers exemption from taxes, free sites and other inducements. Labor conditions good. Write Sec. Bd. Trade.

HESPELER (Waterloo Co.) on River Speed, 9 miles s. of Guelph, 6 miles n.e. of Galt, 3 miles e. of Preston. On G.T.R., connection with C.P.R. at Galt by Galt, Preston and Hespeler Elec. Ry. Hotels, Queen's, Commercial. 8 churches, public schools, 2 parks. Niagara electric power, 400 h.p. available. Rates according to amount used. Water system, Municipal buildings. 2 banks. Industries, blacksmiths' tools, woodworking machinery, furniture (2), stoves and furnaces, woollen mill machinery, textiles, sashes and doors, enamelled iron, lightning rods. Good farming district. Alt. 943. Pop. 3,000.

SPECIAL OPPORTUNITIES.—Foundries, furniture factories, free sites, tax exemptions and loans to new industries. Good labor conditions. Write Sec. Bd. Trade.

HUNTSVILLE (Muskoka Dist.), 145 miles n. of Toronto, on G.T.R. Local steamboat service. Hotels, Kent, Dominion, Vernon and G.T.R. summer hotel "Wa-Wa." 6 churches, public and continuation schools, bank. Town owns light and water systems. Industries, tannery, planing mill, leather co., machine shop, 3 lumber mills. Timber, tan bark and minerals in neighborhood. A beautiful summer tourist country. Alt. 957. Pop. *2,358.

SPECIAL OPPORTUNITIES.—All wood working industries, summer cottages and hotels. Liberal inducements offered. Write Sec. Bd. Trade.

INGERSOLL (Oxford Co.), on Thames River, 20 miles e. of London, on G.T.R., C.P.R., T.L. and E. and P. Electric Railway to Woodstock. Hotels, Ingersoll Inn, Atlantic and 3 others. Industries, 35 factories, including tools, furniture, hay forks, pianos, nuts, machine screws, cheese, pork packing, mowers, hearses, reapers, 2 builders' factories, 2 shell factories, woollen mill, 2 grist mills, fruit machinery, condensed milk, agricultural implements, flour mill, saw mill, packing mill, grist mill, knitted underwear, fertilizer plant. Natural gas and Niagara electric power. Alt. 879. Pop. 5,500.

SPECIAL OPPORTUNITIES.—Manufacturers using agricultural products and wood. Factory sites on 2 railways. Inducements offered on application. Write Pres. Bd. Trade.

KEMPTVILLE (Grenville Co.), on s. branch Rideau River, on C.P.R., S.S. connection with Ottawa River ports. Hotels, McPherson, Kerr. 5 churches, public and high schools, library, park, 2 banks. Industries include planing mills, electric power plant concrete pipe works, foundry. A farming district. Alt. 297. Pop. 1,250.

SPECIAL OPPORTUNITIES.—Knitting mill, brick making. Elec. power at \$20 per h.p. Write the Reeve.

KINCARDINE (Bruce Co.), on e. shore of Lake Huron, directly opposite Alpena, Mich. (97 miles), 100 miles n. of London, 160 miles w. of Toronto. On G.T.R. Steamship connections with Cleveland and Sault Ste. Marie. Hotels, Royal, Queen's, and 2 others. 4 churches, light and public schools, Carnegie library, city hall, 2 parks. Town owns elec. light and water systems. Elec. power at 10c. per k.w. hour. 2 banks. Industries include bridge and boiler works, pork packing, sashes and doors (2), salt, chairs, furniture. Neighborhood supplies sand, clay, marl, limestone and salt. Rich mixed farming and fruit-growing district. Popular summer resort, with bathing, boating and fishing. Good summer cottages to rent. Alt. 587. Pop. 2,500.

NOTE.—Knitting factory under construction.

SPECIAL OPPORTUNITIES.—Iron industry, table factory. Steady supply of male and female labor. Town offers free sites and water, tax exemption and loan to new industries. Several factory buildings vacant which could be obtained free by bona-fide manufacturers. Write Sec. Bd. Trade.

KINGSTON (Frontenac Co.), at mouth of Cataraqui River, where St. Lawrence leaves Lake Ontario. Outlet of Rideau Canal. On G.T.R., C.P.R., C.N.R. On line of all river and lake S.S. Cos. Local elec. ry. Hotels,

Frontenac, British American, Randolph. Seat of Queen's University and Royal Military College. Numerous churches, good schools, 4 parks, 8 banks. City owns light, power, water and sewerage systems. 1,200 h.p. elec. power available. Industries include smelters (2), locomotives, textiles, hosiery, tiles (2), paper boxes, mouldings, iron pipes and tubes, pianos, boats, planing mill, breweries (2), broom factories (2), 4 elevators. Large feldspar mines nearby. Alt. 261. Pop. 21,000.

SPECIAL OPPORTUNITIES.—Manufacturing clay and feldspar products. Free sites and tax exemptions to new industries, Cheap coal. Write Sec. Bd. Trade or Chairman Industrial Committee.

KINGSVILLE (Essex Co.), on Lake Erie, on Père Marquette Ry. Elec. Ry. to Leamington, 8 miles; Windsor, 28 miles. S.S. to Pelee Island. Hotels, King's, Grovedale, Mittewas (summer). 3 churches, school, library, 2 parks, 2 banks. Town owns waterworks. Elec. light by private co. Nat. gas. Industries, woollen mill, cabinet shop, builders' factory, flour mill, 3 tobacco factories, cigars, stoves, metal weather strips. Alt. 608. Pop. 2,000.

SPECIAL OPPORTUNITIES.—Natural gas at 13c. per 1,000 ft. for manufacturers, free sites, loans and tax exemptions. Write Sec. Bd. Trade.

LAKEFIELD (Peterboro Co.), on the Otonabee River and Trent Valley Canal, 10 miles from Peterborough; on G.T.R. Terminus of Stoney Lake Nav. Co. Hotels, Lakefield, Commercial. 5 churches, public and continuation school, Lakefield Boys' School, 50 students. Town hall, park, elec. light co., bank, library, newspaper. Industries, Portland cement, 2 canoe factories, planing mill, saw mill, cheese factory, butter factory, elevator. Alt. 770. Pop. 1,411.

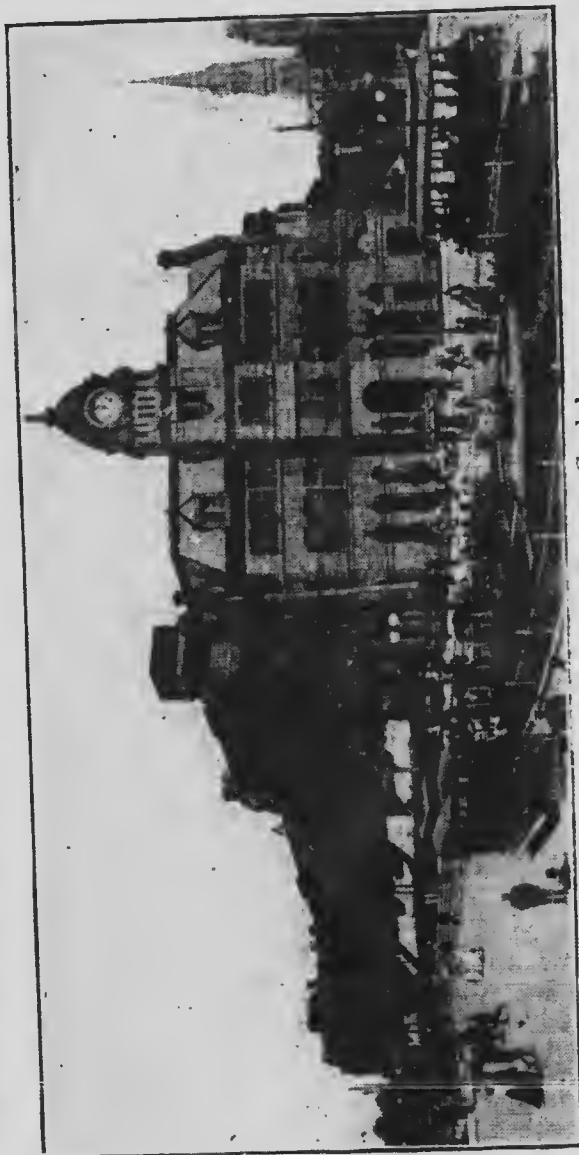
SPECIAL OPPORTUNITIES.—Woodworking factories, industries using Portland cement, flour and feed and general supply mills. 1,400 h.p. water power available. Write Pres. Bd. Trade.

LEAMINGTON (Essex Co.), on Lake Erie, on M.C.R., Père Marquette Ry., on electric line to Windsor, 35 miles. Steamer to Pelee Island. Hotels, Auto-Stop, Ryall, Deming. 5 churches, public and high schools, Carnegie library. 15 acre park on Lake Erie, 4 banks. Natural gas for domestic and commercial use. Elec. light and power. Town owns water system. Industries, grist mill, tobacco (2), baskets, veneer and handles, foundries (3), fruit canning, handles, catsup, cigars, sashes and doors, Heinz pickle factory, and largest early vegetable hothouse in Ontario. Neighborhood supplies tobacco*, early fruit and vegetables. Alt. 626. Pop. 2,880.

*See tobacco under Agriculture, page 11.

GUELPH

THE CITY FAMOUS FOR ITS MUNICIPAL OWNERSHIP



St. George's Square, Guelph

Good openings for industries in almost every line of manufacture. Guelph has many exceptional advantages. Special inducements by way of free sites, fixed assessment, cash bonuses, or loans at low rate of interest. Manufacturers, Capitalists, Financiers, Homeseekers and others will be furnished with further and more specific information promptly and gratuitously, upon request.

THE MAYOR OR CITY CLERK

GUELPH, CANADA

Read description of Guelph on page 41.

SPECIAL OPPORTUNITIES.—Manufactures using agricultural produce. Town offers tax exemptions and free water. Write Town Clerk.

†LINDSAY (Victoria Co.), on Scugog River, 69 miles n.e. of Toronto, on C.P.R., G.T.R. S.S. connection with Trent Valley Canal. Hotels, Benson, Simpson. 5 churches, 4 public schools, 1 separate, collegiate institute, convent. Abundant elec. power available; rate, \$18 to \$20 for 24-hour service. 5 banks, loan and savings co. One wholesale store, 75 retail, business college. Good scenery, fishing and hunting. Alt. 854. Pop. 8,000.

LISTOWEL (Perth Co.), on G.T.R., C.P.R. Hotels, Arlington, Grand Central, and 2 others. 7 churches, 2 schools, business college. Town owns waterworks and elec. light. 3 banks. Industries, 2 builders' factories, chairs, pianos, furniture, brewery, flour and oatmeal mill, creamery, knitting mill, cigar factory. Alt. 1,252. Pop. *2,289. Write Sec. Bd. Trade.

†LONDON (Middlesex Co.), on River Thames, on C.P.R., G.T.R., M.C.R., P.M.R., London and Port Stanley Ry. (owned by city) to Lake Erie. Electric ry. to St. Thomas (18 miles), and Port Stanley (23 miles), connects with steamers to Cleveland, Detroit, etc. Hotels, Tecumseh \$3 up, Grigg House, Dominion and others. Seat of Western University, about 350 students. Seat of Anglican and Roman Catholic bishops. Industries, 231 factories, including iron, wood, leather, brass, cigars, cigar boxes, furniture, engines, agricultural implements, tinware, biscuits and candies, stoves, boilers, brass working, paper boxes, chemicals, breweries. Alt. 809. Pop. about 60,000.

NOTE.—Four new schools under construction. New city hall, new post office, new customs building, and extensive improvements to London's harbour on Lake Erie form part of London's building programme.

SPECIAL OPPORTUNITIES. Manufactures of all kinds, especially iron and steel and textiles. Niagara power. Living is cheap. Loans, nominal taxation and cheap sites offered new industries. See Middlesex County under "Agric. and Fruit Districts," and illustrated advertisement. Write Industrial Commissioner for special offer, reducing cost of establishing desirable industries.

†L'ORIGNAL (Prescott Co.), county town, on C.N.R., half-way between Montreal and Ottawa, 50 miles; Caladonia Springs 6 miles. Ottawa River boats. Hotels, Grand Central, Ottawa. 4 churches, school, convent. †See illustrated advertisement, pages 36, 37.

Saw mills. Electric light. Lumber of all kinds obtainable. Pop. 1,500.

SPECIAL OPPORTUNITIES.—Any kind of woodworking. Inducements on application. Write the Reeve.

LUCKNOW (Bruce Co.), on G.T.R. Daily stage from Goderich. Hotels, Cain, McGarry. Churches, public school, 2 banks. Industries, apple evaporator, woollen mills, 3 saw mills, furniture, builders' factory, bag holder and machine co., flour mill. Alt. 908. Pop. 1,200. Write Town Clerk.

MATTAWA.—(Nipissing Dist.) at east end of Lake Temiskaming, at junction of Mattawa and Ottawa Rivers, 45 miles e. of North Bay, on C.P.R. main line and Kippawa br. Dom. Ex. Tel. C.P.R. Hotels, Victoria, Mattawa, Rosemount, Ottawa. 4 churches (Ang., Pres., Meth., R.C.), public and separate schools, court house, gaol, town and fire halls, electric light, bank. Shingle mill, saw mill. Large deposits of mica nearby. Good fishing and hunting. Alt 564. Pop. *1,523.

SPECIAL OPPORTUNITIES.—Lumbering, several good water powers awaiting development. Write the Mayor.

MEAFORD (Grey Co.), port on Georgian Bay, on G.T.R. Between Owen Sound and Collingwood (20 miles each). Fine harbor, 20 ft. of water. 5 boats weekly to West. Hotels, Paul's, Royal, Queen's. 5 churches, high and public schools, town hall, fire hall, armoury. Hydro-electric power. Two banks. Industries include bricks, hardwood floors, mantle, foundry and machine shop, flour mill, boxes, canning factory, furniture, wheelbarrows, blankets and yarns, flooring, 3 fruit evaporators, 2 builders' factories, tannery, 2 coopers' shops, 2 garages. Apple-growing district. Alt. 672. Pop. 3,300.

SPECIAL OPPORTUNITIES.—Chair, iron bed and wood-working factories, boat builder. Town offers free sites, free water, tax exemptions, and possibly free loan. Write Sec. Bd. Trade.

MERRITON (Lincoln Co.), on G.T.R., N., St. C. & T.R. and Welland Canal. Electric line from St. Catharines. Hotels, Mansion House, Union, Railway. Town owns elec. light and power plant, and gravity fire protection systems. Industries, bentwood, rubber, Presto-lite, 3 paper mills, carbide factory, foundry and wire rope works, planing mill, brass foundry, plaster mill. Alt. 389. Pop. 2,200.

SPECIAL OPPORTUNITIES.—To new industries town offers inducements, abundant water power and good railway facilities. Write Municipal Clerk.

MIDLAND (Simcoe Co.), on the Georgian Bay, 120 miles from Toronto, G.T.R. Northern Nav. Co. to Parry Sound. Hotels, Gladstone, Queen's, Hewis, American. 5 churches, 1 high, 4 public schools, 3 banks, 3 garages. Industries, 3 large elevators, 3 lumber mills, 3 planing mills, 2 sash and door factories, foundry and machine shop, box shoo factory, woollen mill, 1 blast furnace, 1 flour mill, whitewear factory, 2 engine works, 3 elevators, 2 coal docks, 1 ship-building yard, shell works. Government wireless station. Power from Severn River. Alt. 593. Pop. *4,660.

SPECIAL OPPORTUNITIES.—Stove factory, electrical works, dry dock, building mechanics' houses. Write Sec. Bd. Trade.

MILTON (Halton Co.), on C.P.R., G.T.R., 32 miles w. of Toronto. Hotels, McGibbon, New Royal, Commercial. 3 churches, 1 school, county buildings, 2 parks. Municipal electric light and waterworks, 3 banks. Industries, carpets, saw mill, creamery, wire nails, flour mill, 4 pressed brick works, planing mill, boots and shoes, crushed stone and lime, wood screws and rivets, nickel and silver plating, electric motors, foundry. Alt. 660. Pop. *1,825.

SPECIAL OPPORTUNITIES.—Basket factory. For manufacturers there are good shipping facilities. Factory sites adjacent to competitive railway lines, with tax exemption and free water. Write Sec. Bd. Trade.

MITCHELL (Perth Co.), on Thames River, on G.T.R., 12 miles w. of Stratford. Hotels, Hicks, Royal. 4 churches, public and high schools, 2 banks. Town owns light and water systems. Niagara electric power. Industries, knitting mill, flax mill, foundry, bricks and tiles, woollen mill, flour mill, planing mill, bridge works, evaporator, cold storage. Alt. 1,121. Pop. 1,900. Write the Mayor.

MORRISBURG (Dundas Co.), on St. Lawrence River, 90 miles w. of Montreal, on G.T.R. Connection with R. & O. Nav. Co. at Prescott. Hotels, St. Lawrence \$2. Windsor, Southern \$1.50. 5 churches, 2 banks. Town owns electric light and water system. 1,100 h.p. water power available. Industries, stone works, tack factory. Good scenery, fishing and boating. Pop. 1,800.

MOUNT FOREST (Wellington Co.), on C.P.R., G.T.R. Hotels, Queen's, Coyne, 5 churches, high, pub. and sep. schools, 2 banks. Industries include foundry, caskets, carriages, grist mill, woollen mill, brick yard. Alt. 1,348. Pop. 1,837.

SPECIAL OPPORTUNITIES.—Furniture or woodenware factory, organ and piano case factory. Write the Mayor

NAPANEE (Lennox and Addington Co.), on Napanee River, navigable to Bay of Quinte; 135 miles e. of Toronto, on G.T.R. and C.N.R., connecting with C.P.R. at Tweed. Hotels, Campbell, Paisley and 2 others. 5 churches, public school, collegiate institute, county municipal bldgs., park, race track, electric light, gas, water and sewerage systems. 3 banks. Industries include flour mills (2), foundry and machine shop, cannery, bricks and tiles (2), saw mill, furniture, planing mills and motor boat works, carriages. Water power available. Neighborhood supplies brick clay and cement clays. Centre of good farming district. Alt. 313. Pop. about 4,000.

SPECIAL OPPORTUNITIES.—Furniture and other factories. Power at \$12 per h.p. up. Free sites and fixed assessments offered. Write Town Clerk.

NEW HAMBURG (Waterloo Co.), on River Nith, 75 miles w. of Toronto, 14 miles from Berlin and Stratford, on G.T.R. Hotels, commercial, Imperial and 2 others. 7 churches, Hydro-electric light and power. 2 banks. Industries include silverware, felt boots, brass work, electric meters, furniture, bricks, flour mill, foundry, farm implements, trunks and bags. Pop. 1,800.

NEW LISKEARD, at head of Lake Temiskaming, on T. & N.O. Ry. Steamers to Temiskaming, connecting by short line with C.P.R. at Mattawa. Electric Ry. to Haileybury, 5 miles; Cobalt, 10 miles. Hotels, Grand Union, Canada, Windsor. 5 churches, separate, public and high schools, fire hall, public library, theatre, hospital. Municipal electric light and waterworks, 2 banks. Industries, 5 saw mills, bricks, foundry, grist mill. Cheap electric power. Neighborhood supplies pulpwood and clay. A good and largely settled agricultural district. Pop. 3,000.

SPECIAL OPPORTUNITIES.—Furniture factory, brick yards, pulp mill, wooden-ware, confectionery and biscuit factories, creamery, commission, produce merchant. Write Pres. Temiskaming Bd. Trade, or T. & N. O. Ry. Agent.

NIAGARA FALLS (Welland Co.), on G.T.R., M.C.R., C.P.R., Erie Ry., N.Y.C. and H.R.R., Lehigh Valley, Lake Shore, W. & O., Wabash, Père Marquette, International Traction (electric), N., St. C. & T. (electric). Hotels, Clifton, Savoy, Windsor, New Rosli, Lafayette, Hospice, Trennick. Power is supplied by natural gas and 3 electric companies generating 450,000 h.p. 8 banks. Industries include cereal foods, carborundum, graphite, cyanide, suspenders, neckwear, wire and steel chain,

silver ware, hats, hosiery, foot supports, carpet sweepers, automobile accessories, paper boxes, aluminum novelties, corsets, cannery, creamery, planing mill, 2 brick yards, 2 builders' factories, foundry and machine shop, electro-chemical industries, sanitary cans. In neighborhood is found Queenston limestone, brick clay, building sand, and gravel. Alt. 573. Pop. 11,850. See Niagara District under "Agric. and Fruit Districts."

SPECIAL OPPORTUNITIES.—Iron and steel industries, textile and other manufacturing industries, contractors, builders, real estate, building houses and business blocks for sale or rental. Power rates—electric, \$10 to \$17 per h.p.; natural gas, 40c. per M ft. Town offers manufacturers fixed assessment or exemption from taxation for a term of years, and free sites to all, dependent on nature of applicants' industry. Write Sec. Bd. Trade.

NORWICH (Oxford Co.), on Otter Creek and G.T.R., 16 miles s.e. of Woodstock. Hotel, Dake House. 6 churches public and high schools, 2 banks. Industries include brooms, cider and vinegar works, saw and planing mills, condenser, evaporator, flour mill. Alt. 846. Pop. 1,200.

SPECIAL OPPORTUNITIES.—Canning factory. Good factory available, with railway sidings. Niagara power. Free and fixed rate of taxation offered manufacturers. Write Sec. Bd. Trade.

OAKVILLE (Halton Co.), on Lake Ontario, 21 miles w. of Toronto, on G.T.R. Electric Ry. to Hamilton, 21 miles. Fair harbor. Hotels, Village Inn, Gibson, Oakville, Murray. 5 churches, public, separate and high schools, Appleby School, a first-class boys' school, J. H. Guest, Proprietor, is 1 mile out of town. Municipality owns waterworks and electric light. 3 banks. Industries include 2 planing mills, tanning, baskets, boat building, evaporator, aluminum ware. Alt. 329. Pop. 2,972, in summer 3,500.

NOTE.—Government cement road from Toronto to Hamilton via Oakville under construction.

ORANGEVILLE (Dufferin Co.), country seat. On C.P.R., 49 miles from Toronto. Hotels, Queens', Grand Central, and 2 others. 5 churches, public and high schools. Electric light and waterworks. Electric power. 3 banks. Industries include foundry and machine shop, furniture, cement, builder's factory, chop mill, flour mill. Alt. 1,395. Pop. 2,468.

SPECIAL OPPORTUNITIES.—Boot and shoe factory, carriage factory, stove works, woollen mill, knitting mill, 2 buildings available. Write Sec. Bd. Trade.

ORILLIA (Simcoe Co.), on Lake Couchiching, 86 miles n. of Toronto, on G.T.R., C.P.R. On route of projected Trent Valley Canal. Hotels, Orillia, Daly, Gladstone. 7 churches, 5 schools, collegiate institute. Municipal buildings, opera house, Y.M.C.A. Provincial Asylum for Feeble-minded, Carnegie library. 2 parks. Town owns light, water and sewerage systems. Elec. power, 2,000 h.p. available. Rate, \$18.40 per h.p. for 10-hour service, special rate for 24-hour service. 4 banks. Industries include clothing (2) refining and smelting, wood specialties, oxyoline apparatus, saw mill machinery, planing mills (2), boats and canoes (2), hoops, brewery, hardware, furniture, pumps, farm implements, automobiles, carriages, wagons, cement, bricks, 4 wholesale houses. A farming and fruit-growing country. Abundant timber. Popular summer resort. Good bathing and fishing. Golf links. Alt. 732. Pop. 7,800.

SPECIAL OPPORTUNITIES.—Auto tyre and rubber factory, whitewear, automobiles, furniture. To bona fide industries town offers fixed assessments and free sites. Cheap power. Good labor conditions. Write Sec. Bd. Trade.

OSHAWA (Ontario Co.), 2 miles from Lake Ontario, 34 miles e. of Toronto, on C.P.R., C.N.R., G.T.R., and Toronto and Eastern Elec. Ry. Local elec. ry. connects all factories with steam railways. Hotels, Commercial, Queen's, Oshawa, Central. 7 churches, high school, 5 public schools, Y.M.C.A., Carnegie library, armory, hospital, 2 parks. Electric light and power from Trent River. Town owns water and sewerage systems. Gas plant. 4 banks. Industries, steel ranges, foundry, whitewear, steam and gas fittings, carriages, automobiles, malleable iron, interior fittings, canning, textiles, metal work, leather, woollens, pianos, builders and contractors, 1 wholesale grocery. A good agricultural district. Alt. 331. Pop. 8,000.

SPECIAL OPPORTUNITIES.—Manufactures of all kinds. Good shipping facilities and labor conditions. Abundant electric power. Free sites and other liberal inducements offered. Write Sec. Publicity Committee.

OTTAWA, capital of the Dominion of Canada, on the Ottawa River, C.P.R., G.T.R., C.N.R., Ottawa and N.Y. (N.Y.C.). Suburban Electric Ry. to Hull, Aylmer, Britannia. Steamers to St. Lawrence River and the Great Lakes, through Rideau Canal. Hotels, Chateau Laurier \$2.00 up (Eur. plan), New Russell \$1.00 to \$3.50 (Eur. plan), Alexandra \$2.50, Carleton, Windsor \$2.00 to \$2.50. Official seat of Governor-General, seat of Federal

Government. National Victoria Museum, Parliamentary Library, National Art Gallery, Royal Observatory, Royal Mint, Central Canadian Experimental Farm, 460 acres, Govt. Fisheries Exhibit, Govt. Archives, Agricultural and Industrial Exhibition and Fat Stock Show of Central Canada. Anglican and Roman Catholic cathedrals, Ottawa University (500 students), Ashbury College for boys, Ottawa Ladies' College, La Salle Academy for boys, Provincial Normal School, collegiate and an excellent public school system. 30 miles of driveway, well laid out, and 2,000 acres beautiful park lands. Many attractive resorts in the district, with all kinds of winter and summer sports. Industries, about 180 factories, including wood products, paper mills, match factories, foundries, cement, carbide, marine gas buoys (only factory in the world), iron works and foundries, mica, clothing, etc., etc. Capital invested, over \$50,000,000; about 17,000 hands employed. Alt. 247. Pop. including suburbs, 100,500 approx.

NOTE.—Parliament buildings destroyed by fire 3 Feb., 1916, are being rebuilt.

SPECIAL OPPORTUNITIES.—Automobiles, boxes, bags, biscuits, barrels, bottles, clothing, cigars, confectionery, cereals, elevator and mill building machinery, furniture, flour, gloves, paper and kindred products, pottery, roller mill products, rubber and felt goods, shirts, shoes, steel castings, tiles, textiles, woodenware, etc. Water power available within a radius of 60 miles is estimated at 2,000,000 h.p., of which about 75,000 h.p. is at present utilized. Inducements on application. Write Sec. Bd. Trade.

TOWEN SOUND (Grey Co.), port on Georgian Bay, at mouth of Sydenham River, 122 miles n.w. of Toronto, on C.P.R. and G.T.R. S.S. lines to lake ports: Northern Navigation Co., C.P.R., Dominion Transportation Co., Owen Sound and Georgian Bay Co., Chicago, Duluth and Georgian Bay Transit Co. Fine, well-protected harbor. Sound is 12 miles long, navigable for largest vessels. Hotels, Queen's, Seldon, Patterson. Hotel and summer resort on the beach near town. Churches of all denominations. High and public schools, 2 theatres, public library, 5 banks. Industries, 2 Portland cement plants, chairs, bolts and screws, tables, 2 tanneries, woodenware, baskets, 3 mill machinery, turbine water wheels, wire fences, wire nails, 3 agricultural implements, brewery, 2 bricks, 2 lime stoves, 2 furniture, 5 saw mill, confectionery and biscuits, vinegar and pickles, 2 cold storage plants, 5 foundries (3 iron, 1 steel, 1 malleable iron), 2 sash and door factories, 2 flour mills, oatmeal mill, linseed oil mill, woollen mill. Alt. 585. Pop. 12,612.

SPECIAL OPPORTUNITIES. — Agricultural implements, organ and piano, carriage and furniture factories, ship-building, iron and woodworking industries of all kinds. Liberal inducements offered. See illus. Advt. Write Chairman Industrial Committee.

PALMERSTON (Wellington Co.), 78 miles from Toronto, a division point on G.T.R. Hotels, Queen's, Imperial, Hess. 5 churches, 1 school, Carnegie library, 2 banks. Industries include builders' factory, grist mill, woodenware. Alt. 1,313. Pop. 2,000. Write the Mayor.

PARIS (Brant Co.), on Grand River, on G.T.R., L. Erie & Northern Ry., and Grand Valley Elec. Ry. from Brantford, 7 miles; to Galt, 14 miles. Hotels, Arlington, New Royal. 7 churches, school, library, 3 banks. Town owns light, water and sewerage systems. Hydro-elec. power. Nat. gas at 50c., with 10% discount. Industries include alabastine works, flour mill, woollen cloth mill, knitting factory, brick yard. International Harvester Co., needles, shells. Neighborhood supplies gypsum and brick clay. Tennis, golf, etc. Alt. 843. Pop. 4,300.

PEMBROKE (Renfrew Co.), on Ottawa River, on C.P.R. main line, branch connections with G.T.R., C.N.R. main line. Steam ferry to Alouette island, steamer to Des Joachims. 8 hotels. 9 churches, 3 schools, 2 hospitals. Chief place in Upper Ottawa Valley. Good water supply. Electric power supplied by Pembroke Power Co. at \$12 per h.p., delivered. 3 banks. Industries include 3 lumber mills, 2 builders' factories, machine shop, stoves, carriages, lumbering tools, woollen mill, 4 saw mills, bricks, mocassins, gloves, leather tannery, incubator factory, shook mills, steel and equipment factory. The Central Military Camp is situated at Petawawa, 10 miles. Good trout fishing. Alt. 381. Pop. 8,000.

SPECIAL OPPORTUNITIES. — Woodenware, electrical supplies, hardwood specialties. Write the Mayor.

PENETANGUISHENE (Simcoe Co.), on inlet of Georgian Bay, on G.T.R. Hotels, Penetanguishene (in summer), Canada. and 3 others. A summer resort. 5 churches, public, separate and high schools, Carnegie library, hospital for insane, 2 parks, water system, hydro-elec. power, 2 banks. Industries include 1 tannery, 5 saw mills, launch engines, 2 box works, carriages, foundry, stoves, boat and canoe factory, fibre boards, shoe packs, 3 planing mills, pails, tubs, 2 machine shops, flour mills, 2 brick yards. Good harbor and docks. Gateway to 30,000 Islands of Georgian Bay. Bathing, boating, fishing and hunting. Alt. 589. Pop. 3,963.

SPECIAL OPPORTUNITIES.—Knitting mills, furniture, pulp mills, boots, iron and steel works, elevators ship yards. Town offers free sites, tax exemption, cheap power, shipment by rail and water. Write Sec. Bd. Trade.

PERTH (Lanark Co.), on Tay River, 40 miles from Ottawa, on C.P.R. Hotels, Revere, Hicks, and others. 6 churches public and separate schools, collegiate institute, library, athletic park, light and waterworks. 3 banks. Industries include 2 foundries, sashes and doors, medicines, aerated waters, felt factory, carpets, knitting mills, boots and shoes. Rideau Ferry Summer Resort, 8 miles, reached by stage and boat. Good farming district. 9-hole golf course. Alt. 433. Pop. 4,000. Write Sec. Bd. Trade.

PETERBOROUGH (Peterborough Co.), 75 miles n.e. of Toronto, on Otonabee River, on C.P.R., G.T.R. and branches, Trent Waterway. Hotels, Oriental, National and others. Electric power up to 30,000 h.p. developed. Seat of R.C. cathedral. 17 churches, 9 schools, normal training schools for teachers, collegiate institute, public library, 4 parks, 8 banks. City owns elec. light and power plant, water and sewerage systems. Industries, over 40 factories, including harness, cereal foods, electric machinery and supplies, mining and mill machinery, lumber mills, canoe factories, pork packing, locks, flour mills, shovels, agricultural implements, clothing, carpets, tents and sails, dairy machinery, yarn, steel sashes, marble products, bricks and tiles, butter, aerated waters, furniture, silk labels. (For details of lift lock here, the largest in the world, see under Canals and Waterways). Headquarters for Canadian General Electric and Quaker Oats Co. for Canada. The neighborhood supplies iron, gold, silver, lead, mica and various kinds of lumber. Centre of a rich mixed farming and dairying district. Alt. 949. Pop. 24,000.

SPECIAL OPPORTUNITIES.—Iron industries, industries using wood, tanneries, textiles. Good labor conditions. City offers to manufacturers free sites, with fixed assessment on land without improvements for 10 years. Write City Clerk.

PETROLIA (Lambton Co.), on G.T.R., Mich. Central Ry. Hotels, Iroquois, Tecumseh, Fletcher and 2 others. 4 churches, and Salvation Army, 5 schools, business college, hospital, 2 parks, banks (2 chartered, 1 private). Town owns water and sewerage systems. Elec. light and nat. gas by private co. Industries include nitroglycerine factory, 2 oil refineries, oil well supplies, 2 elevators, fruit and vegetable cannery, 2 boiler works and machine shops, wagons, automobiles, bridge co.,



The Abolition of Duty on Wool by the United States will give an impetus to Sheep Breeding in Ontario

fire extinguishers, large brick and tile works, large butter factory. Centre of oil district. A fine farming country. Alt. 667. Pop. 4,100.

SPECIAL OPPORTUNITIES.—Oil investments, oil prospecting, any kind of industry. Town offers free sites and exemptions from taxes. Write Sec. Bd. Trade.

PICTON (Prince Edward Co.,) on Bay of Quinte, 103 miles e. of Toronto. On C.N.R. Hotels, Royal, Globe, Queen's, Quinte. Daily steamers to Rochester, Kingston, Belleville and all lake ports, bi-weekly to Toronto, and Montreal. Public library, 2 parks, 7 churches. public and separate schools, collegiate institute, 4 banks. Industries include foundry, fruit canning, extracts, butter factory, saw and planing mill, boat building and bricks. Golf links. Alt. 322. Pop. *3,788. Write Sec. Bd. Trade.

PORT ARTHUR (Thunder Bay Dist.), on w. shore of Lake Superior, 1,700 miles from Atlantic, 1,900 miles from Pacific; head of lake navigation. Judicial centre of district. Customs port of entry. On C.N.P., C.P.R., P.A.D. & W.Ry. Inter-city electric railway to Fort William (3 miles). All lines of steamers on upper lakes call. Terminals of Inter-lake S.S. Line. Govt. wireless station. Hotels, Prince Arthur (C.N.R.), Eur. plan; Mariaggi \$2, Algoma \$2, and 13 others. Churches, all denominations; 7 divisional schools, 2 separate schools, collegiate institute, Y.M.C.A., armoury, sailors' institute, 4 theatres, public library. Streets all paved and well lighted. Municipally owned street ry., electric plant (hydro power), waterworks and telephone, banks. Industries include Dominion Govt., C.N.R. and 4 private elevators, total capacity 16,000,000 bushels. Atikokan blast furnaces, large shipbuilding co., C.N. coal and ore docks, 5 large lumber cos., wagon works, 3 cold storage plants, tents and awnings, 2 aerated water, brewery, hardwood finishing factory, sand, lime, bricks. The centre of a rich mixed farming district, which is being opened up by the Government roads. Health resort for asthma, etc. Assessment in 1906, \$5,000,000; in 1914, \$36,756,975. Alt. 608. Pop. 20,000.

SPECIAL OPPORTUNITIES.—City offers free factory sites and 75% concession on taxation. Steam coal costs about \$2.50 per ton. Atikokan Blast Furnace supplies pig iron. 3,000,000,000 tons of iron ore in vicinity. Write to Chairman Industrial Committee.

PORT COLBORNE (Welland Co.), on Lake Erie, at mouth of Welland Canal, on G.T.R. and N. St., C. & T.R.

(electric). Hotels, Commercial, McNeal's. Limestone found in neighborhood. Power, electric from Niagara, and natural gas. Good harbor, depth 22 ft., large docking facilities, 2 banks. Industries include planing mill, brewery and malting house, large flour mills, Govt. elevator, cork works, cement works, grist mill, pig iron factory, grain and feed mill. Humberston Summer Resort Club nearby. Alt. 580. Pop. 2,500.

SPECIAL OPPORTUNITIES.—Steel and iron industries. Write the Mayor.

PORT DALHOUSIE (Lincoln Co.), on s. side of Lake Ontario, at entrance to Welland Canal, 3½ miles from St. Catharines. On N., St. C. & T. Ry. and G.T.R. S.S. service every 3 hours in summer to Toronto. Hotels, Austin, Wellington, Lincoln, 3 churches, public and separate schools. Hydro-Electric power and light. Industries, rubber factory, 2 canneries, shipyard and dry dock, coal dock elevator, Government canal gate yard. Centre of Niagara peach belt. Pleasure resort, with beach park, bathing, boating on "Henley" course, tennis courts. Pop. 1,500; in summer 2,000.

PORT ELGIN (Bruce Co.), on Lake Huron, on G.T.R. Hotels, Queen's, Arlington, American. 2 banks. Industries, planing mill, bricks, grist mill, brush and broom factory, saw mill. A summer resort. Alt. 673. Pop. 1,235.

PORT HOPE (Durham Co.), on Lake Ontario, 60 miles e. of Toronto. On G.T.R., C.N.R., C.P.R. Steamer bi-weekly to Toronto and Montreal; Fine harbor. Hotels, Queen's, St. Lawrence Hall. Seat of Trinity College School for boys, 125 pupils; central and 2 primary schools, 6 churches, library, 2 parks, opera house. Town owns water and sewerage systems. Street lighting by private co. 3 banks, 1 loan co. Industries include preserving and canning, enamelware, lacquer and varnish, iron sewer pipe and connecting iron works, plumbers' supplies, tanneries, foundry, file factory, flour mills, pottery and red brick plant, planing mill, machine shops, large greenhouses, carriage and implement factories, trousers, wooden and steel mats, leather shoe laces. Good fruit-farming district. Alt. 265. Pop. *5,089.

SPECIAL OPPORTUNITIES.—Manufacture of brass goods, automobiles, malleable iron. Abundant elec. power at \$12 to \$25 per h.p. Erection of mechanics' houses. Town offers free sites and tax exemptions. Write Sec. Bd. Trade.

PORT PERRY (Ontario Co.), on Lake Scugog, 43 miles e. of Toronto, on G.T.R. Hotels, Sebert, St. Charles. Public and high schools, 5 churches, 2 banks. Town owns elec. light and water systems. Industries: Evaporator, lumber and flour mills, harness factory, wholesale harness hardware. Good duck and wild goose shooting and fishing. Alt. 829. Pop. 1,215.

PRESCOTT (Grenville Co.), on St. Lawrence River and C.P.R. and G.T.R., 12 miles e. of Brockville. Hotels, Daniels, Alexander, Revere. Foot of lake navigation on St. Lawrence River, and port of call of all boats, car ferry to N.Y. Cen. Ry., summer and winter, at Ogdensburg. 4 churches, public, high and separate schools, opera house and public library, 2 banks. Industries include emery wheels, caskets, creamery, distillery, grain elevator (cap. 1,000,000 bushels), planing mill, brewery, veneer paper, etc. Government marine works are situated here. Alt. 247. Pop. *2,801.

SPECIAL OPPORTUNITIES.—Branch factories of American firms. Town has direct car ferry connection all the year with U.S. railways, and large undeveloped power. Factory on C.P.R. track and brick yard plant for sale. Inducements on application. Write Sec. Bd. Trade.

PRESTON (Waterloo Co.), on G.T.R. and C.P.R. Visited for its mineral springs. Electric lines to Berlin and Galt, Hespeler, Paris, Brantford. Hotels, Kress, Del Monte, and 3 others. 5 churches, good schools, 3 parks, library. Town owns elec. light and power, water and sewerage systems. Industries, woodworking machinery, office, school and household furniture, cigars, stoves and furnaces, electric and steam cars, hay machinery, planing mill, metal shingles, brewery, rolling mill, woollens, brushes, agricultural implements, hockey sticks, wagons and sleighs, woollen mill, piano players, shoes. 16 factories in all. Alt. 925. Pop. 5,200.

SPECIAL OPPORTUNITIES.—Manufacturers are offered low taxation, good shipping facilities and hydro-electric power. 150 acres of factory sites between C.P.R. and G.T.R. Tax exemptions, loans offered to new industries. Write Commissioner of Industries.

RENFREW (Renfrew Co.), on Bonnechère River, 8 miles from confluence with Ottawa River. On G.T.R. and C.P.R. main lines. C.P.R. branches to Kingston and Eganville. Hotels, Renfrew, Dominion, Ottawa \$1.50. 6 churches, public and separate schools, collegiate institute, drill hall, exhib. bldgs., 2 banks. Municipal power house, water and sewerage systems. 2 private elec. light

DESCRIPTIONS OF TOWNS

plants. Industries, refrigerators, butter, flour mills, hosiery, machinery, sashes and doors (2), truck scales, bricks and tiles, lime, woollen mill, blankets, foundry, electric supplies. Alt. 416. Pop. 4,500.

SPECIAL OPPORTUNITIES—Woollen factories, foundry, woodenware factory, knitting mills. Tradesmen, carpenters, plumbers, masons, bricklayers, factory hands, domestic servants. 600 h.p. elec. power available at \$20 per h.p., 24-hour service. Abundant water power nearby. Town offers free sites and tax exemptions. Write Sec. Bd. Trade.

RIDGETOWN (Kent Co.), on M.C.R. and Père Marquette Ry. Hotels, Arlington, Anderson. 8 churches, public school, collegiate institute, library. Industries include planing mill, basket factory, cannery, bean packing plant, machinery works. Natural gas at 25c. per M feet, 12½c. to manufacturers. Alt. 657. Pop. *1,905.

SPECIAL OPPORTUNITIES.—Woodworking industries, shoe factory, pickle factory. Inducements on application. Write Sec.-Mgr. Royal Bank.

ROCKLAND (Russell Co.), on Ottawa River, 22 miles e. of Ottawa. On G.T.R., C.N.R. Steamboats on Ottawa River. Hotels, Rockland, Atlantic, and 2 others. 3 churches, public, high and 2 separate schools, bank. Light and water by private co. Industries, lumber mills (2), mica, sashes and doors, machine shop, planing mill. Popular tourist resort. Pop. 3,277.

SPECIAL OPPORTUNITIES.—Wood, brick, cement and lime industries, canning tomatoes and corn. Town offers tax exemptions. Write Town Clerk.

ST. CATHARINES (Lincoln Co.), on G.T.R. and Welland Canal. Niagara, St. C. and Toronto Ry. steamer to Toronto. Elec. ry. to Niagara Falls, Welland, Port Colborne, Niagara-on-the-Lake. Hotels, The Welland (combination hotel and sanitarium), Saline springs, \$2.50 up, New Murray \$2, etc. 15 churches, 10 schools, collegiate institute, business college. Seat of Bishop Ridley College (Church of England), 150 boys. County bldg., city hall, armories, library. City owns gas, water and sewerage systems, and Hydro-Electric Light & Power plant. Elec. light and power and nat. gas by private cos. 13 banks. Centre of Ontario fruit belt. Industries, about 80 in district, including 5 paper mills, flour mill, planing mill, hair cloth, wine, metal works, biscuits, 4 canning factories, incandescent lamps, baskets, saws, agricultural hand tools, knitting, shoe factory, brewery, mincemeat machines, knives, tannery, builders' fac-

tories, flax and silk mills, greenhouse manufactures. Canadian Henley Regatta held annually. Alt. 347. Pop. 14,741

NOTE.—G.T.Ry. will build new station and freight warehouse

SPECIAL OPPORTUNITIES.—Building workmen's houses. Any manufacturing industry. Cheap power. Liberal inducements offered. Write Industrial Commissioner or Sec. Bd. Trade.

¶ **ST. MARY'S** (Perth Co.), on Thames River, 100 miles w. of Toronto, on G.T.R. and C.P.R. Hotels, Windsor, Royal Edward, Ontario and C.P.R. 7 churches, 3 public schools, separate school, collegiate institute and public library, opera house, municipal buildings and large parks, 3 banks. Town owns waterworks and elec. light. Hydro-electric power 2 newspapers. 15 miles of granolithic walks. Industries include 2 builders' factor agricultural implements, fruit evaporator, creamery and wood specialties, \$250,000 cement works, cement producer 2 planing mills, 2 limestone quarries, lime kiln, storage hooks and eaves, flour mill. Neighbourhood supplies sand and stone, cement clay limestone and lumber. The centre of a very rich general mixed farming, fruit-growing and dairying district. Good boat on Thames River boat House, Boating Association and grounds. Beautiful scenery. Alt. 1,082. Pop. 800.

¶ **ST. THOMAS** (Essex Co.), on C.P.R., G.T.R., M.C.R., Wabash, 87 passenger trains daily. Elec. to Pt. Stanley 18 miles; London, 18 miles. S. connection by Pt. Stanley with Cleveland, Detroit, etc., and Upper Lakes. Hotels, Grand Central, 50, Columbia, Duke \$2, and 3 others. 10 churches, college, 1 high and 5 public schools, 2 daily papers, public (150 acres), 1 country, 2 social clubs, 10 public buildings, hospital, Old People's Home, 9 banks. Industries include brushes and brooms, shoes 13 biscuits, knitting, handles (2), woodenware (3), 1 steel, 1 brass and 3 iron foundries, 3 large railway shops, planing mills (3), flour mills (2). City owns all public utilities. Surrounded by rich agricultural and fruit belt. Alt. 754. Pop. 16,000.

SPECIAL OPPORTUNITIES.—Automobile factory, steel foundry. 20,000 h.p. electric power at cost. Town offers loans, free sites and tax exemptions. Write to Sec. Bd. Trade.

¶ **SANDWICH** (Essex Co.), adjoining city of Windsor, on Detroit River, opposite, Mich. On Essex Terminal Ry. (freight), connecting with C.P.R., G.T.R., Wabash, Pere Marquette, Michigan Central Rys. Electric rys.

DESCRIPTIONS OF TOWNS

to Windsor, Tecumseh (12 miles); Essex, Belle River, Kingsville and Leamington (40 miles). Direct S.S. connection with all lake ports. Hotels, Vendome, Royal, Oak, Dominion. 3 churches, public and separate schools, Assumption College for boys (R.C.), bank. Dominion fish hatchery. Electric power, \$30 per h.p. up. Natural gas. Town owns water and sewerage systems. Industries, fur robe factory, salt and heavy chemicals (only factory of its kind in Canada), canning, wine, bricks, lumber, 2 coaling docks for steamers. Neighborhood supplies salt. The centre of a rich mixed farming and tobacco-growing district. Many peach orchards and vineyards. A good golf and country club. Pop. about 3,000.

NOTE.—U.S. Steel Corporation buildings will cover over 1,000 acres, making Sandwich the second largest steel centre in America.

SPECIAL OPPORTUNITIES.—Any industry using steel and iron. To new industries excellent shipping facilities by rail and water, 2 miles of river front available for factory sites, tax exemptions and other liberal inducements. Cheap power, natural gas rates 10c. per M ft. up. Good labor conditions. Write Pres. Bd. Trade.

SARNIA (Lambton Co.), at mouth of St. Clair River, on Lake Huron, on G.T.R., Père Marquette Ry. Steamers to points on Lakes Huron and Superior. Hotels, Vendome, Belle Chambre. 12 churches, public and high schools. City owns water and sewerage systems. Elec. light and power by private co. Nat. gas. 5 banks and 2 loan cos. Industries include lumber mills, woodworking, stoves, bridge works, threshers, oil refinery, salt works, saw mill, cannery, jams, cream separators, brass goods, overalls, cigars, lubricants, wire fencing, dish washing machinery, etc. The city has two miles of water front, at any point of which boats can make dock safely. Neighborhood supplies petroleum and salt. Alt. 587. Pop. 12,000.

SPECIAL OPPORTUNITIES.—Iron or steel industries, shipbuilding, saw mills, elevators. Cheap freights to Northwest, and cheap coal. Write Sec. Bd. Trade.

SAULT STE. MARIE, on St. Mary's River, connecting Lakes Superior and Huron. 440 miles n.w. of Toronto; 350 miles n. of Detroit, Mich., on C.P.R. and Algoma Central and H.B. Ry. S.S. connection with all Great Lake ports. Hotels, International, Algonquin, Windsor, and 10 others. 7 churches, schools: 1 high, 1 technical, 6 public, 3 separate. Federal building, library, park. City owns sewerage, light and water systems.

* See wine, page 10.

Elec. power, 7 banks. Industries include Algoma Steel Corporation, bricks and tiles, Alg. Cent. Ry. car shops, wholesale produce, fish, tar and chemicals, paper, elec. power, foundry and machine shop, trap rock, brewery, 5 wholesale houses. Neighborhood supplies iron, copper, silver, gold and lumber. Good fishing and shooting. Golf and country club. Pop. 15,000. Pop. of adjoining municipality of Strelton, 4,200.

NOTE.—Dry dock and shipbuilding plant under construction.

SPECIAL OPPORTUNITIES.—Grain elevators, flour mills, tanneries, industries using iron ore, pig iron or steel, woodworking, boots and shoes, furniture, farm implements, saw mills, boxes, sashes and doors, cars, car wheels, machinery and tools. Good labor conditions. Inducements on applications. Write Sec. Bd. Trade.

SEAFORTH (Huron Co.), 113 miles n.w. of Toronto, on G.T.R. Hotels, Commercial, Queen's. 5 churches, separate and public schools, collegiate institute, public library, 3 parks, 2 banks. Industries include furniture, engines and threshers, leggings and gloves, staves and bolts, sashes and doors, saw mill, grist, flour, oatmeal and flax mills, cooperage, tannery, aerated waters, apple evaporator, creamery, pottery, brick and tile yards. Hydro-electric power. Neighborhood supplies salt, hardwood, sand and clay for brick and tiles works. The centre of a very rich mixed farming and fruit-growing district. Pop. (including suburbs) 3,500.

SPECIAL OPPORTUNITIES.—A medium-sized brick factory available, formerly operated as woollen mill, To bonafide industries town offers free sites, tax exemptions and other inducements on application. Write Sec. Bd. Trade.

SIMCOE (North Co.), on G.T.R. and Wabash Rys., connecting with C.P.R., also on L.E. & N. Elec. Ry. Hotels, Battersby, Melbourne, Norfolk, Queen's. 6 churches, high and public schools, Carnegie library, park. Nat. gas, Hydro-elec. power. Town owns water and sewerage systems. Industries include the largest canning factory in Canada, tin can plant, lithographing plant, evaporator, 2 pickle factories, tannery, steam warping tugs, saw mills, seeds, creamery, woollen mill, flour mill. The centre of a very rich fruit and dairy district. Good duck shooting. Pop. 4,000.

SPECIAL OPPORTUNITIES.—Industries using farm and dairy produce as raw material. excellent shipping facilities and cheap power from both Hydro-electric and

DESCRIPTIONS OF TOWNS

natural gas. Immunity from labor troubles. Liberal inducements. Write Sec. Bd. Trade.

SMITH'S FALLS (Lanark Co.), on Rideau River and Canal, 45 miles s. of Ottawa, 60 miles n.e. of Kingston, on C.P.R., C.N.R. Hotels, Rideau, Russell and 3 others. 7 churches, public and separate schools, collegiate institute, 2 hospitals, 2 theatres, town hall, free library, market, park, elec. light. Town owns water and sewerage systems. 800 h.p. elec. power, 1,000 h.p. water power available, 4 banks. Industries, farm implements, malleable castings, stoves, ploughs, bricks, sashes and doors, grist mill, 3 wholesale houses. Summer resort at Rideau Lake (7 miles), tennis, golf, etc. Alt. 423. Pop. 7,000.

SPECIAL OPPORTUNITIES.—Cigar factory, hardware store, any industry employing female labor. Liberal inducements on application. Write Sec. Bd. Trade.

SOUTHAMPTON (Bruce Co.), on e. shore Lake Huron, G.T.R. Hotels, Commercial, Central, Bank, park. Industries, builders' factory, 2 furniture factories, chairs, foundry, wood turning, electric power. Alt. 614. Pop. *1,681.

SPECIAL OPPORTUNITIES.—Woodworking industries, law-
yer. Write the Mayor.

SOUTH PORCUPINE (Temiskaming Dist.), 480 miles n. of Toronto, on T. & N.O. Ry. Can. Ex. Dom. Ex. Hotels, King George, \$2.50 to \$3.00, and three others. Four churches (R.C., Pres., Epis., Meth.), public school, court house and jail, electric light and power, fire hall, 3 banks. Gen. Electric Co., machinery co., stores of all kinds. The business centre of the gold mining district, employing 5,000 men. Customs house clearings, about \$250,000. Silver, platinum, nickel and iron also found. Fishing and hunting. Pop. *1,000. Write Pres. Bd. Trade.

STOUFFVILLE (York Co.), on G.T.R., 25 miles n.e. of Toronto. Hotels, Mansion House, Queen's. Public and high schools, park, 2 banks. Industries, saw mill, telephone company, rattan furniture, carriages, electric light, machine shop, vinegar and pickling plant, sash and door factory, chopping mills, large greenhouses. Good water-works. Alt. 802. Pop. *1,029. Write Pres. Bd. Trade.

STRATFORD (Perth Co.), 88 miles w. of Toronto, a div. point on G.T.R., 6 lines enter. Hotels, Queen's, Mansion, Commercial. 14 churches, 6 public schools, collegiate institute, Prov. Normal School, business college, 2 parks, 6 banks. City owns light, water and sewerage systems. Industries, 60, including G.T.R., locomotive repair shops,

wire fences, furniture, threshing machines, flour, biscuits and candy, bricks and tiles, chairs, music cabinets, wool-lens, agricultural implements, pork packing, ladders, hay forks, dairy supplies, brewery, rattan furniture, corrugated drain pipe, flour mill machinery, desks, bridge and iron works, clothing, office specialties, upholstered furniture, steel bed springs, harness specialties, grain picklers, knitted goods, traction engines, cigars, hoops and staves, furniture frames, brassware, davenport, Pop 17,000.

SPECIAL OPPORTUNITIES.—Furniture and all woodworking industries. Bonds of bona-fide industries guaranteed by city. Free sites and low fixed assessments. Niagara power. Labor conditions good. Steady supply of skilled iron and wood workers. Write Sec. Bd. Trade.

STRATHROY (Middlesex Co.), on Sydenham River and G.T.R., C.P.R. 6 miles south. Hotels, Queen's, American. 2 schools, collegiate institute, armoury, park, 3 banks, 2 builders' factories, 2 flour and grist mills, cannery, cheese and butter factory, 2 furniture factories, woollen mill, stoves, 2 egg packing establishments, 1 upholstering factory, 1 cold storage, 2 saw mills, pianos, handles. A first-class agricultural and dairy country. Neighborhood supplies hard and soft woods. Alt. 744. Pop. 2,821.

SPECIAL OPPORTUNITIES.—Town offers reduced taxes and loans to factories. Write the Mayor or Town Clerk.

THOROLD (Welland Co.), on Welland Canal, on G.T.R., Niagara, St. Cath. & T. Elec. Ry. to Niagara Falls (9 m.), St. Catharines (4 m.), Port Dalhousie (7 m.). Hotels, City, Welland, Summit. 4 churches, high, separate and 2 public schools, library, fire hall, 4 banks. Town owns electric light, water and sewerage systems. Abundant electric and water power, nat. gas. Industries include pulp board, paper mills, 2 flour mills, 4 pulp mills, road binder material, glass, asbestos pipe covering, foundry and machine shops, knitting factory. In the neighborhood are stone quarries and natural cement. Alt. 526. Pop. 5,000.

SPECIAL OPPORTUNITIES.—Cheap power. Town offers fixed assessment to new industries. Write Sec. Bd. Trade.

TILBURY (Kent Co.), on C.P.R., M.C.R. Hotels, International, Empire, Balmoral. 4 churches, public, separate and continuation schools, 2 banks, athletic field, public library. Town owns water and sewerage systems. Niagara electric power and light. Industries, handle factory, grist mill, planing mill, cannery, rubberized cloth, automobile tops, machine shop, foundry. A good farming district, which supplies timber, crude oil, flax,



Spraying an Ontario Apple Orchard. Ontario produces 60 per cent. of the Total Crop of Apples in Canada. (See page 5.)

tobacco, fruits and vegetables for canning. Alt. 586. Pop. 2,000.

SPECIAL OPPORTUNITIES.—Nat. gas at 15c. per M cubic ft. for industrial use. Inducements to new industries on application. Write Sec. Bd. Trade.

TILLSONBURG (Oxford Co.), on G.T.R., C.P.R., N.Y.C. (M.C. Div.), Wabash Rys. Hotels, Arlington, Imperial, Royal. 5 churches, public and high schools, 3 banks. Industries include robes and mitts, gasoline engines, machinery, grist mill, tannery, bricks, 2 foundries, hand harvest tools, flour mill, oatmeal mills, condensed milk, carriage works, show cases factory, planing mills, linen goods. Surrounded by rich dairying and fruit district, supplying timber and brick clay. Alt. 757. Pop. *2,758.

SPECIAL OPPORTUNITIES.—New industries can obtain very cheap coal and low freight rates, free sites, tax exemptions, and possibly loan. Write Sec. Bd. Trade.

TORONTO (York Co.), on Lake Ontario, incorporated as a city in 1834, on G.T.R., C.P.R. and C.N.R. Capital of Province of Ontario. Seat of Ontario Government and Parliament Buildings; Toronto University, about 4,000 students. Financial and commercial centre. Publishing centre of Canada. Hotels, King Edward, \$2.50 up, rooms \$1.50 up; Queen's \$3 up, Prince George \$3 up, rooms \$1.50 up; Arlington \$2.50 to \$3, Walker House \$2.50 up, rooms \$1.50; Palmer \$2 to \$3, Iroquois, Elliott House, Mossop's, rooms \$1.50. Industries, over 1,200 factories, including foundry products, wood products, leather, clothing, agricultural implements, distillery, breweries. Number of hands employed in factories, 78,000; capital invested in manufactures, \$170,000,000. Annual payroll of manufacturers, \$42,000,000. Electric power from Niagara. Area of city in 1915, 39½ sq. miles. Bank clearings, \$2,012,955,006. Assessment for 1915, \$576,444,520. Rate of taxation, 22 mills. exclusive of one mill war tax. Gross debt on 31st Dec., 1914, \$72,249,388. Net debt. \$60,564,385. Building permits, 1914, \$20,264,288. In 1914 the St. Ry. carried 152,966,153 persons. Alt. (at City Hall) 296. Pop. (Dom. Census, 1911), 376,240. (Assessors estimate, 1915) 470,114. For industrial opportunities write Assessment Commissioner.

NOTE.—In connection with the Toronto Harbor improvements (see under Canals and Waterways), 1,000 acres of waste land adjoining the harbor are being reclaimed to be used for factory sites, fully equipped with free railway sidings, broad streets, public docks, and a ship channel 400 yards wide through the centre. Write

the Secretary. Toronto Harbor Commissioners, 50 Bay Street, Toronto.

TRENTON (Hastings Co.), at head of Bay of Quinte, at mouth of Trent River, 100 miles e. of Toronto. Southern terminus of Trent Valley Canal. On C.N.R. (div. pt.), C.P.R. (div. pt.), G.T.R.; on Canada S.S. Lines, Ltd., and Quebec, and Bay of Quinte Navigation Cos. S.S. communication with all lake ports. Daily stage to Belleville. Hotels, Gilbert, King George, and 4 others. 6 churches, public (2), separate and high schools. Electric power, 3 banks. Industries include Trenton Water and Power Co., Weddell Dredging Co., Creosoting Co., iron concentrator, buttons, cooperage, account registers, foundry, cold storage, 2 clothing, 2 sashes and doors, paper mills, wholesale lumber, cannery, sprays, evaporators, beverages. The neighborhood supplies iron, limestone and many varieties of lumber. Good fishing. Pop. 5,000.

NOTE.—Trent Valley Canal will be operated and a Carnegie library will be opened in 1916.

SPECIAL OPPORTUNITIES.—Cereal and boot factories. Excellent transportation and power facilities. 45,000 h.p. electric power available, rates \$12 to \$20 per h.p. Good labor conditions. Free sites and fixed assessments to new industries. Write Sec. Bd. Trade.

TWEED (Hastings Co.), on Moira River, 55 miles e. of Peterboro, on C.P.R. and Bay of Quinte Ry. Hotels, Huyck's, Queen's. 4 churches, public, separate and continuation schools, 2 banks. Industries, builders' supplies, chemicals, 2 foundries, machine shop and garage, hubs and bent work, steel troughs, bricks, evaporator. Electric light. Pop. 1,320.

SPECIAL OPPORTUNITIES.—Electric power, 3c. per k.w. Tax exemptions and free sites offered. Write Sec. Bd. Trade.

UXBRIDGE (Ontario Co.), 40 miles n.e. of Toronto, on G.T.R., B.T. Co. Hotels, Mansion, Bascom, Arlington. 6 churches, high and public schools, 2 banks, public library, electric lighting, artesian wells. Industries include tannery, chopping mill, flour and oatmeal mills, elevator, planing mill, furniture factory, foundry. Alt. 886. Pop. 1,612.

NOTE.—Hydro-electric system and hydro-radial railway from Toronto will be completed in 1916.

VANKLEEK HILL (Prescott Co.), 57 miles e. of Ottawa, 63 miles w. of Montreal, on C.P.R., G.T.R. Hotels, (unlicensed) Dominion, Grand Central. 5 churches, public and separate schools, collegiate institute, agric. bldg., rink,

gymnasium, hospital. Elec. light, owned by private company, 2 banks. Industries, pumps, saw mills, sashes and doors, carriages, foundry, roller mill. Alt. 272. Pop. 1,700.

VICTORIA HARBOR (Simcoe Co.), on Georgian Bay, 100 miles n. of Toronto. on G.T.R. and C.P.R., connecting S.S. line with C.P.R. steamers for upper lake ports. Hotel, Royal Victoria. 4 churches, 2 public schools, park, 1 bank. Hydro-electric light and power from Severn River. Large lumber industry. Pop. 1,800. Write Clerk of Municipality.

WALKERTON (Bruce Co.), 120 miles w. of Toronto, on G.T.R. and C.P.R. Hotels, Hartley, Queen's, Central. 6 churches, public, separate and high schools, business college, Carnegie library. Elec. light and power, water and sewerage systems, 2 banks. Industries, furniture factories (2), biscuits, sashes and doors, bobbins, foundry and machine shop, roller mill, flour mill, egg and butter factory. Alt. 931. Pop. 3,000.

NOTE—Hydro-electric line from Eugenia Falls under construction.

WALKERVILLE (Essex Co.), on Detroit River, directly opposite Detroit, Mich., on G.T.R., Wabash, terminus of Pere Marquette, Essex Terminal Ry., connecting with C.P.R., Michigan Central and W.E. and L.S. Rys. Elec. rys. to Windsor (1½ miles), Sandwich (3 miles), Tecumseh (6 miles), and Amherstburg (15 miles). Ferry to Detroit. Direct S.S. connections with all lake ports. Hotels, Crown, Reid's, Exchange. 4 churches, public and separate schools, public library, 4 banks. Elec. light, waterworks and sewerage. Hydro-electric power, lighting rates 15c. per k.w., less 20%. Natural gas, domestic rates 30c. per M ft. Industries include Hiram Walker's distillery, Parke, Davis & Co., varnish and paints (2), automobiles (5), automobile bodies, automobile trimmings, engines and valves, bridge works, drop forgings, weather strips, roofing, polishes, hones, wire fences (3), furnaces, steam fire engines and fire appliances, fly paper, tobacco, clothing (2), cooperage, brewery, drugs, marine engines, asphalt blocks, carriage goods, crucible steel castings, concrete reinforcement, steel stamping works, overalls and shirts (2), dye works, metal stamping works, twist drills, electric welders, lubricators, cement tile machines, valves and hydrants, roofing. A rich district, supplying fruit, grain, vegetables and tobacco. Tennis, golf, bowling and yachting. Alt. 588. Pop. 4,700.

SPECIAL OPPORTUNITIES.—Iron and steel industries, automobiles and accessories, building employees' houses.

DESCRIPTIONS OF TOWNS

Hydro-electric power. Natural gas 12c. per M ft. Excellent labor conditions. Write Sec. Bd. Trade.

WALLACEBURG (Kent Co.), on Sydenham River, navigable to Wallaceburg for largest lake vessels. On Père Marquette Ry., and Chatham, Wallaceburg & L. Erie Ry. Passenger S.S. to Detroit and Port Huron. Hotels, Dupont, Empire, Tecumseh, and 2 others. 3 banks. Industries, sugar refinery, glass works (600 hands), brass goods, staves and hoops, flour mill, flax mill, knitting mill, planing mills, and machine shops, 2 dry docks. Pop. 5,000.

SPECIAL OPPORTUNITIES.—Fruit cannery. Good shipping facilities by rail and water. Niagara elec. power. Nat. gas at 12c. per M cubic ft. Inducements to new industries. Write Pres. Bd. Trade.

WATERLOO (Waterloo Co.), on C.P.R. & G.T.R. Hotels, Lewis, Commercial, Alexander. 6 churches, 2 public and 1 separate schools, 3 banks, loan co. Industries include threshing machines, furniture, brooms and brushes, boots and shoes, malt house, upholstery, office desks, distillery, buttons, mattress factory, flour mill, bricks, brick and tiles, cigars, washing machines, springs, combs, gloves, boxes, interior woodwork, shoddy, brick-making machinery, trunks and bags, barrels, cigar boxes, upholstered goods, brewery and malt factory, tannery. Fine farming district. Alt. 1,056. Pop. 4,360.

SPECIAL OPPORTUNITIES.—A good supply of skill labor is available for the manufacture of furniture (frames and upholstered goods, office, school and church), general interior fittings, planing mill, sash and door factory, boots and shoes, collars and shirts, and for general foundry. No strikes. Tax exemptions offered, sometimes free sites and loans. Write Sec. Bd. Trade.

WATFORD (Lambton Co.), on G.T.R., 30 miles from London. Hotels, Roche House, Rogers', McManus'. 6 churches, high and public schools, 2 banks, armoury. Industries, flour mill, wagons, wire, 2 lumber yards, 2 saw mills, chopping mill. wire works, apple evaporator. Pop. 1,300.

SPECIAL OPPORTUNITIES.—Sugar beet industry, canning factory.

WELLAND (Welland Co.), on Welland Ship Canal, on Welland River; 22 miles from Buffalo, 14 miles from Niagara Falls, 8 miles from Lake Erie; on M.C.R., Père Marquette, G.T.R., Wabash, T.H. & B.R., C.P.R., N. St. C. & T. Elec. Ry. connecting with Port Colborne,

Thorold, Niagara Falls and Port Weller; Niagara, Welland & Lake Erie Elec. Ry. (local). S.S. connection between tide water and Canadian Northwest, with daily freight service both ways; 2 Government docks and Turning Basin. Wireless Station. Hotels, Dexter \$2 up, Mansion House and 3 others \$1, 11 churches, 5 public and 1 high school, business colleges, County Court House, jail. Registry Office, Hospital and Industrial Home; Agricultural Park, Merritt Park. Hydro-electric system, Ontario Power Co., Dominion Power & Transmission. Town owns water and sewerage systems; unlimited elec. power at competitive rates. Nat. gas at 30c. to 40c., with special rate to manufacturers; 6 banks. Industries, M. Beatty & Son, Canadian Billings & Spencer, Chipman-Holton Mills, Canada Forge Co., 2 foundries, Can. Automatic Transportation Co., Dain Mfg. Co., cotton mills, Elec. Steel & Metal Co., electro metals, cannery, furniture, Imperial Mfg. Co., carbide, overalls, chemicals, cordage, pipe mills, beds, stoves, ice cream, marble, seeds, boilers, concrete stone, tires and rubber, milling co., 4 planing mills. Situated in centre of one of the finest fruit districts in Canada. Alt. 601. Pop. 8,000; with suburbs, 10,000.

SPECIAL OPPORTUNITIES.—All kinds of factories. Natural gas supplied at 25c. per M ft. to factories. Electricity, \$12 to \$15 per h.p. per annum, 24-hour service. A fine harbor, 20 ft of water. Write Industrial Commissioner.

¶ **WHITBY** (Ontario Co.), 30 miles e. of Toronto, on Lake Ontario, with harbor; on G.T.R., C.P.R. Hotels, Windsor, Royal. Seat of Ontario Ladies' College. 5 churches, public and high schools, 2 banks. Town owns water-works and elec. light. Industries include 2 elevators, horse blankets, whips, etc., tannery, saddlery and harness, hardware, planing mill, electric power, machine shop. Alt. 276. Pop. 2,429.

NOTE.—Provincial Asylum and sewerage system in course of construction. Toronto & Eastern Electric Ry. will enter in 1916.

¶ **WIARTON** (Bruce Co.), on Georgian Bay, 140 miles n.w. of Toronto, on G.T.R. S.S. of Northern Nav. Co. Hotels, Arlington, Pacific. 5 churches, public and high schools, 2 banks. Town owns water and sewerage systems. Elec. light by private co. Industries include planing mill, furniture (2), hardwood floors, caskets, bed frames, flour mill, lumber and saw mills (5), butter. Pop. 2,300.

SPECIAL OPPORTUNITIES.—Foundry and machine shop, knitting factory. Old sugar beet factory available. Electric power \$25 per h.p. Write Sec. Bd. Trade.

WINDSOR (Essex Co.), on Detroit River, immediately opposite Detroit, on C.P.R., M.C.R., G.T.R., Wabash, Père Marquette. Elec. Ry. to Leamington (39 miles), Tecumseh (7 miles), Amherstburg (18 miles). On line of all Canadian S.S. on Great Lakes. Hotels, Crawford, British American, King George. 14 churches, 7 public schools, 4 separate, collegiate institute, 9 banks. Town owns light, water and sewerage systems. Hydro-electric power. Industries include large salt works, wire fences, tobacco, cigars, brass goods, brewery, knitting factory, cabinet shop, asphalt blocks, flour mill, machine shop, duplicating machines, builders' factory, paint and varnish, machine works, cornmeal, brushes, paper boxes, bentwood, cement bricks, foundry, overall factory, manufacturing chemists, pearl button works, 4 automobile factories, cereals, electrical machinery, spring beds, stoves and saw mill machinery. Natural gas available for manufacturing purposes. Limestone and salt found in neighborhood. Alt. 580. Pop. 26,000.

SPECIAL OPPORTUNITIES.—Iron and steel industries, building houses and stores, automobile factories, foundry, salt works, hotel. Natural gas at 12c. per M ft. Electric power from 3c. to 5c. per k.w. Free switching service by Essex Terminal switch line connecting with all trunk lines. Dock owned by city. New industries offered free water and light, cheap sites, tax exemption. Write Sec. Bd. Trade.

WINGHAM (Huron Co.), on Maitland River, 129 miles w. of Toronto, on G.T.R., C.P.R. Hotels, Brunswick, Queen's. 6 churches, public and high schools, business college, hospital, town hall, park, library. Town owns light, water and sewerage systems. Banks, 3 chartered, 1 private. Industries include planing mill, salt works, flour mill, panel doors, saw mill, furniture, stoves and furnaces, tannery, bricks, gloves and glove leather, carriages, electric power. Alt. 1,044. Pop. about 3,000.

WOODSTOCK (Oxford Co.), on G.T.R., C.P.R. Electric railway to Ingersoll (10 miles). Hotels, Oxford and New Commercial \$2, Buckingham, New Dufferin \$2, Royal \$1.50. 12 churches, 5 public schools, R.C. schools, 1 collegiate institute, commercial college, public library, hospital. Seat of Woodstock College (150 students). Industries include wagons, 3 machine shops, biscuits, furniture, woven wire fence, wheel hubs, furniture castors, farms tool, flour mill, organs and pianos, planing mill, brewery, chopping mill, soaps, stoves, oatmeal, windmills, bentwood for brooms, knitting, shot guns, garden tools, braid edging. Good agricultural district, supplying cattle, hogs, cheese, butter, wool, hides, grain. Tennis and golf clubs, boating on Thames River. Alt. 958. Pop. 11,000.

Union Bank of Canada

Established 1865

Head Office, Winnipeg

PAID-UP CAPITAL.....	\$ 5,000,000
TOTAL ASSETS, OVER	\$90,000,000

BRANCHES IN ONTARIO

Alexandria	Essex	Melbourne	Plantagenet
Barrie	Fenwick	Merrickville	Portland
Belleville	Fisherville	Metcalf	Roseneath
Berlin	Fort William	Mimico	St. Catharines
Bourget	Galt	Mount	Shelburne
Brampton	Goderich	Brydges	Smith's Falls
Canboro	Grimsby	Newboro	Smithville
Canfield	Guelph	New Dundee	Springbrook
Carleton Pl.	Hagersville	New Liskeard	Stirling
Cayuga	Haileybury	North Gower	Stittsville
Cookstown	Hamilton	Norwood	Sydenham
Cooksville	(3 offices)	Orillia	Thornton
Curran	Hastings	Orton	Toledo
Crysler	Hepworth	Osgoode Sta.	Toronto
Dundalk	Hillsburg	Ottawa	(9 offices)
Dunnville	Islington	(4 offices)	Warkworth
Easton's	Kemptville	Owen Sound	West Lorne
Corners	Kinburn	Pakenham	Westport
Edwards	Kingsville	Peterborough	Wheatley
Englehart	Leamington	Pendleton	Warton
Erin	Manotick	Pictou	Winchester

LONDON, ENG., OFFICE

6 Prince's Street, E.C.

West End Branch: Haymarket, S.W.

Managers of the above branches will be pleased to answer enquiries regarding Ontario.

The London Offices transact every kind of banking business with Canada.

J. W. HAMILTON,
Superintendent of Eastern Branches,
Toronto.

