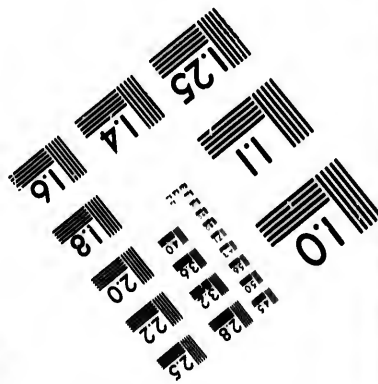
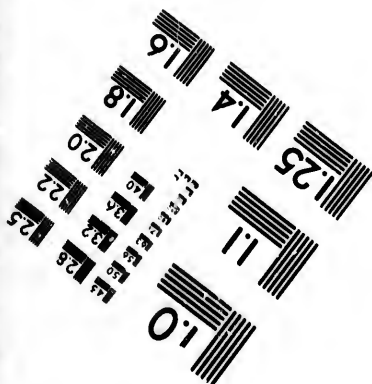
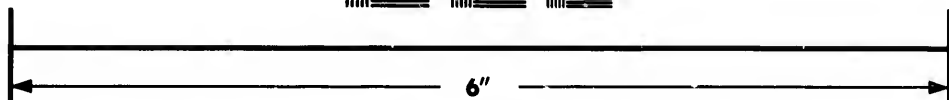
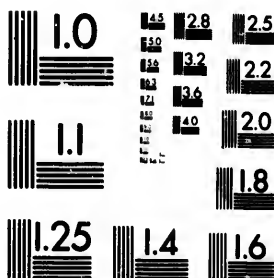


**IMAGE EVALUATION
TEST TARGET (MT-3)**



**Photographic
Sciences
Corporation**

23 WEST MAIN STREET
WEBSTER, N.Y. 14580
(716) 872-4503

15
12.8
13.2
22.5
22
20
18

**CIHM/ICMH
Microfiche
Series.**

**CIHM/ICMH
Collection de
microfiches.**



Canadian Institute for Historical Microreproductions / Institut canadien de microreproductions historiques

10

© 1985

Technical and Bibliographic Notes/Notes techniques et bibliographiques

The Institute has attempted to obtain the best original copy available for filming. Features of this copy which may be bibliographically unique, which may alter any of the images in the reproduction, or which may significantly change the usual method of filming, are checked below.

L'Institut a microfilmé le meilleur exemplaire qu'il lui a été possible de se procurer. Les détails de cet exemplaire qui sont peut-être uniques du point de vue bibliographique, qui peuvent modifier une image reproduite, ou qui peuvent exiger une modification dans la méthode normale de filmage sont indiqués ci-dessous.

- | | |
|--|--|
| <input type="checkbox"/> Coloured covers/
Couverture de couleur | <input type="checkbox"/> Coloured pages/
Pages de couleur |
| <input type="checkbox"/> Covers damaged/
Couverture endommagée | <input type="checkbox"/> Pages damaged/
Pages endommagées |
| <input type="checkbox"/> Covers restored and/or laminated/
Couverture restaurée et/ou pelliculée | <input type="checkbox"/> Pages restored and/or laminated/
Pages restaurées et/ou pelliculées |
| <input type="checkbox"/> Cover title missing/
Le titre de couverture manque | <input checked="" type="checkbox"/> Pages discoloured, stained or foxed/
Pages décolorées, tachetées ou piquées |
| <input type="checkbox"/> Coloured maps/
Cartes géographiques en couleur | <input type="checkbox"/> Pages detached/
Pages détachées |
| <input type="checkbox"/> Coloured ink (i.e. other than blue or black)/
Encre de couleur (i.e. autre que bleue ou noire) | <input checked="" type="checkbox"/> Showthrough/
Transparence |
| <input type="checkbox"/> Coloured plates and/or illustrations/
Planches et/ou illustrations en couleur | <input type="checkbox"/> Quality of print varies/
Qualité inégale de l'impression |
| <input type="checkbox"/> Bound with other material/
Relié avec d'autres documents | <input type="checkbox"/> Includes supplementary material/
Comprend du matériel supplémentaire |
| <input type="checkbox"/> Tight binding may cause shadows or distortion
along interior margin/
La reliure serrée peut causer de l'ombre ou de la
distorsion le long de la marge intérieure | <input type="checkbox"/> Only edition available/
Seule édition disponible |
| <input type="checkbox"/> Blank leaves added during restoration may
appear within the text. Whenever possible, these
have been omitted from filming/
Il se peut que certaines pages blanches ajoutées
lors d'une restauration apparaissent dans le texte,
mais, lorsque cela était possible, ces pages n'ont
pas été filmées. | <input type="checkbox"/> Pages wholly or partially obscured by errata
slips, tissues, etc., have been refilmed to
ensure the best possible image/
Les pages totalement ou partiellement
obscurcies par un feuillet d'errata, une pelure,
etc., ont été filmées à nouveau de façon à
obtenir la meilleure image possible. |
| <input type="checkbox"/> Additional comments:/
Commentaires supplémentaires: | |

This item is filmed at the reduction ratio checked below/
Ce document est filmé au taux de réduction indiqué ci-dessous.

10X	14X	18X	22X	26X	30X
<input type="checkbox"/>	<input type="checkbox"/>	<input type="checkbox"/>	<input checked="" type="checkbox"/>	<input type="checkbox"/>	<input type="checkbox"/>
12X	16X	20X	24X	28X	32X

The copy filmed here has been reproduced thanks to the generosity of:

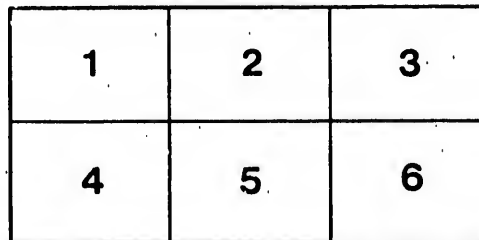
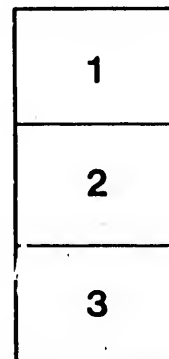
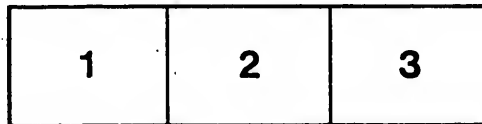
Seminary of Quebec
Library

The images appearing here are the best quality possible considering the condition and legibility of the original copy and in keeping with the filming contract specifications.

Original copies in printed paper covers are filmed beginning with the front cover and ending on the last page with a printed or illustrated impression, or the back cover when appropriate. All other original copies are filmed beginning on the first page with a printed or illustrated impression, and ending on the last page with a printed or illustrated impression.

The last recorded frame on each microfiche shell contain the symbol \rightarrow (meaning "CONTINUED"), or the symbol ∇ (meaning "END"), whichever applies.

Maps, plates, charts, etc., may be filmed at different reduction ratios. Those too large to be entirely included in one exposure are filmed beginning in the upper left hand corner, left to right and top to bottom, as many frames as required. The following diagrams illustrate the method:



L'exemplaire filmé fut reproduit grâce à la générosité de:

Séminaire de Québec
Bibliothèque

Les images suivantes ont été reproduites avec le plus grand soin, compte tenu de la condition et de la netteté de l'exemplaire filmé, et en conformité avec les conditions du contrat de filmage.

Les exemplaires originaux dont la couverture en papier est imprimée sont filmés en commençant par le premier plat et en terminant soit par la dernière page qui comporte une empreinte d'impression ou d'illustration, soit par le second plat, selon le cas. Tous les autres exemplaires originaux sont filmés en commençant par la première page qui comporte une empreinte d'impression ou d'illustration et en terminant par la dernière page qui comporte une telle empreinte.

Un des symboles suivants apparaîtra sur la dernière image de chaque microfiche, selon le cas: le symbole \rightarrow signifie "A SUIVRE", le symbole ∇ signifie "FIN".

Les cartes, planches, tableaux, etc., peuvent être filmés à des taux de réduction différents. Lorsque le document est trop grand pour être reproduit en un seul cliché, il est filmé à partir de l'angle supérieur gauche, de gauche à droite, et de haut en bas, en prenant le nombre d'images nécessaire. Les diagrammes suivants illustrent la méthode.

Bibliothèque,
Le Séminaire de Québec
 3, rue de l'Université,
 Québec 4, QUE.

From "The Canadian Journal" of November, 1869.

**ON THE CHANGES OF BAROMETRIC PRESSURE, AND
 PRESSURE OF VAPOUR THAT ACCOMPANY DIFFERENT
 WINDS, AT TORONTO,**

FROM OBSERVATIONS IN THE SEVEN YEARS, 1860-66 INCLUSIVE.

BY G. T. KINGSTON, M.A.,

DIRECTOR OF THE MAGNETIC OBSERVATORY, TORONTO.

The object in the following paper is to shew the connection which subsists between the direction of the wind and the rapidity of the changes, whether of increase or diminution, which take place in the pressure of air and of vapour.

The changes considered in the investigation are limited to those in which the direction of the wind did not vary between two consecutive observations by more than $22\frac{1}{2}^{\circ}$ on each side of one of the eight principal points; and as such comparative constancy in direction will usually occur only when the interval is short, it was found convenient to employ only the differences between 6 a.m. and 8 a.m., between 2 p.m. and 4 p.m., and between 10 p.m. and midnight.

The total change in the reading between two consecutive observations being first diminished by the change due to diurnal variation, the remainders were then classed according to the direction of the wind in the interval, and their averages in each class taken, for the year collectively as well as separately for the two half-years.

The average changes of barometric pressure which take place in two hours, and found in the manner just described, are given below for each of the principal eight point of the wind's direction.



CHANGES OF BAROMETRIC PRESSURE

APRIL TO SEPTEMBER.

N.	N.E.	E.	S.E.	S.	S.W.	W.	N.W.
+·0085	-·0043	-·0112	-·0057	-·0084	-·0041	+·0132	+·0150

OCTOBER TO MARCH.

N.	N.E.	E.	S.E.	S.	S.W.	W.	N.W.
+·0087	-·0160	-·0334	-·0313	-·0222	-·0007	+·0168	+·0209

THE YEAR.

N.	N.E.	E.	S.E.	S.	S.W.	W.	N.W.
+·0086	-·0103	-·0215	-·0164	-·0129	-·0039	+·0156	+·0180

The most probable values of the changes corresponding to intermediate directions of the wind are given by the following formulae, where Ψ_1 Ψ_2 Ψ_3 represent the changes for the two half years and year, and θ the angular distance of the point from which the wind blew, measured from the North towards the East, and expressed in degrees.

APRIL TO SEPTEMBER.

$$\Psi_1 = + \cdot 0004 + \cdot 0125 \sin(\theta + 141^\circ 29') + \cdot 0044 \sin(2\theta + 186^\circ 29') + \cdot 0025 \sin(3\theta + 14^\circ 2')$$

OCTOBER TO MARCH.

$$\Psi_2 = - \cdot 0075 + \cdot 0281 \sin(\theta + 148^\circ 14') + \cdot 0024 \sin(2\theta + 160^\circ 49') + \cdot 0014 \sin(3\theta + 30^\circ 15')$$

THE YEAR.

$$\Psi_3 = - \cdot 0028 + \cdot 0195 \sin(\theta + 148^\circ 2') + \cdot 0040 \sin(2\theta + 174^\circ 17') + \cdot 0021 \sin(3\theta + 10^\circ 47')$$

PRESSURE OF DRY AIR.

The average changes in the pressure of dry air in two hours with different winds, and the corresponding formulae of interpolation, are as follows.

APRIL TO SEPTEMBER.

N.	N.E.	E.	S.E.	S.	S.W.	W.	N.W.
+·0146	-·0009	-·0128	-·0088	-·0122	-·0046	+·0195	+·0219

OCTOBER TO MARCH

N.	N.E.	E.	S.E.	S.	S.W.	W.	N.W.
+·0110	-·0182	-·0371	-·0342	-·0240	-·0026	+·0195	+·0240

THE YEAR.

N.	N.E.	E.	S.E.	S.	S.W.	W.	N.W.
+·0128	-·0091	-·0243	-·0194	-·0160	-·0034	+·0195	+·0229

APRIL TO SEPTEMBER.

$$\Psi_1 = + \cdot 0021 + \cdot 0182 \sin(\theta + 135^\circ 13') + \cdot 0048 \sin(2\theta + 198^\circ 16') + \cdot 0034 \sin(3\theta + 10^\circ 18')$$

OCTOBER TO MARCH.

$$\Psi_2 = - \cdot 0077 + \cdot 0317 \sin(\theta + 149^\circ 4') + \cdot 0030 \sin(2\theta + 166^\circ 2') + \cdot 0016 \sin(3\theta + 217^\circ 29')$$

THE YEAR.

$$\Psi_3 = -\cdot0021 + \cdot0237 \sin(\theta + 144^\circ 46') + \cdot0040 \sin(2\theta + 174^\circ 17') \\ + \cdot0026 \sin(3\theta + 15^\circ 39')$$

PRESSURE OF VAPOUR.

The average changes in the pressure of vapour in two hours that accompany winds from the eight principal points, and the formulæ for finding the most probable change, with the wind blowing from any intermediate point, are given below :

APRIL TO SEPTEMBER.

N.	N.E.	E.	S.E.	S.	S.W.	W.	N.W.
-·0057	-·0034	+·0020	+·0035	+·0042	+·0001	-·0073	-·0069

OCTOBER TO MARCH.

N.	N.E.	E.	S.E.	S.	S.W.	W.	N.W.
-·0025	+·0009	+·0037	+·0031	+·0017	-·0013	-·0032	-·0039

THE YEAR.

N.	N.E.	E.	S.E.	S.	S.W.	W.	N.W.
-·0041	-·0012	+·0025	+·0034	+·0034	-·0007	-·0046	-·0054

APRIL TO SEPTEMBER.

$$\Psi_1 = -\cdot00169 + \cdot00607 \sin(\theta + 305^\circ 49') + \cdot00096 \sin(2\theta + 88^\circ 48') \\ + \cdot00110 \sin(3\theta + 181^\circ 2')$$

OCTOBER TO MARCH.

$$\Psi_2 = -\cdot00018 + \cdot00595 \sin(\theta + 330^\circ 26') + \cdot00034 \sin(2\theta + 287^\circ 6') \\ + \cdot00022 \sin(3\theta + 243^\circ 26')$$

THE YEAR.

$$\Psi_3 = -\cdot00084 + \cdot00479 \sin(\theta + 312^\circ 43') + \cdot00085 \sin(2\theta + 86^\circ 44') \\ + \cdot00087 \sin(3\theta + 216^\circ 15')$$

If in the nine foregoing formulæ, the variable angle (θ) be made equal in succession to 0, $11^\circ 15'$ ($11^\circ 15'$) $\times 2$, ($11^\circ 15'$) $\times 3$, &c. &c. ($11^\circ 15'$) $\times 31$, the changes of pressure will be found which would most probably occur if the wind were to blow steadily for two hours from each of the thirty-two points of the compass.

The results are given in the annexed Table.

CHANGES OF BAROMETRIC PRESSURE

Table shewing the changes in Barometric Pressure, Pressure of Dry Air and Pressure of Vapour, which take place in two hours, during winds from each of the Thirty-two points of the Compass.

	BAROMETRIC PRESSURE.			PRESSURE OF DRY AIR.			PRESSURE OF VAPOUR.		
	April to Sept.	Oct. to March.	Year.	April to Sept.	Oct. to March.	Year.	April to Sept.	Oct. to March.	Year.
North	+·0083	+·0088	+·0083	+·0144	+·0110	+·0127	-·0057	-·0026	-·0042
N b E	+·0058	+·0035	+·0044	+·0117	+·0055	+·0083	-·0056	-·0010	-·0037
N N E	+·0029	-·0026	-·0001	+·0082	-·0027	+·0032	-·0052	-·0010	-·0030
N E b N	-·0005	-·0092	-·0050	+·0040	-·0105	-·0027	-·0045	-·0000	-·0021
N E	-·0041	-·0158	-·0100	-·0007	-·0182	-·0088	-·0084	+·0010	-·0011
N E b E	-·0074	-·0220	-·0146	-·0054	-·0252	-·0146	-·0020	+·0019	-·0000
E N E	-·0099	-·0272	-·0184	-·0093	-·0300	-·0195	-·0005	+·0027	+·0009
E b N	-·0112	-·0310	-·0208	-·0120	-·0349	-·0228	+·0009	+·0083	+·0017
East	-·0113	-·0334	-·0213	-·0131	-·0372	-·0244	+·0020	+·0036	+·0024
E b S	-·0103	-·0343	-·0214	-·0127	-·0379	-·0243	+·0028	+·0037	+·0028
E S E	-·0086	-·0340	-·0199	-·0114	-·0373	-·0230	+·0032	+·0037	+·0032
S E b E	-·0068	-·0320	-·0180	-·0098	-·0359	-·0211	+·0034	+·0035	+·0034
S E	-·0055	-·0312	-·0160	-·0086	-·0341	-·0192	+·0035	+·0032	+·0036
S E b S	-·0052	-·0298	-·0147	-·0084	-·0321	-·0178	+·0036	+·0029	+·0037
S S E	-·0058	-·0273	-·0132	-·0093	-·0298	-·0170	+·0039	+·0025	+·0037
S b E	-·0071	-·0250	-·0134	-·0109	-·0272	-·0166	+·0041	+·0021	+·0036
South	-·0085	-·0222	-·0131	-·0124	-·0239	-·0161	+·0042	+·0016	+·0033
S b W	-·0093	-·0187	-·0123	-·0131	-·0199	-·0149	+·0040	+·0010	+·0027
S S W	-·0090	-·0145	-·0106	-·0122	-·0149	-·0124	+·0032	+·0003	+·0018
S W b S	-·0071	-·0094	-·0077	-·0093	-·0090	-·0086	+·0019	-·0004	+·0007
S W	-·0038	-·0037	-·0036	-·0044	-·0027	-·0033	+·0001	-·0012	-·0006
S W b W	+·0005	+·0022	+·0014	+·0018	+·0038	+·0028	-·0021	-·0019	-·0019
W S W	+·0052	+·0079	+·0066	+·0084	+·0099	+·0091	-·0042	-·0025	-·0030
W b S	+·0096	+·0120	+·0115	+·0146	+·0152	+·0148	-·0060	-·0029	-·0040
West	+·0131	+·0168	+·0154	+·0195	+·0194	+·0194	-·0073	-·0033	-·0047
W b N	+·0153	+·0196	+·0131	+·0225	+·0223	+·0224	-·0070	-·0085	-·0052
W N W	+·0162	+·0211	+·0194	+·0237	+·0241	+·0239	-·0079	-·0037	-·0054
N W b W	+·0160	+·0214	+·0194	+·0234	+·0247	+·0239	-·0075	-·0038	-·0054
N W	+·0151	+·0203	+·0184	+·0222	+·0242	+·0230	-·0069	-·0033	-·0053
N W b N	+·0137	+·0191	+·0167	+·0204	+·0227	+·0213	-·0063	-·0037	-·0051
N N W	+·0121	+·0166	+·0144	+·0186	+·0200	+·0190	-·0059	-·0035	-·0049
N b W	+·0103	+·0132	+·0113	+·0166	+·0161	+·0162	-·0057	-·0031	-·0046

By examining the table it will be seen that on the average of the year the barometer rises with a wind from any point between S W b W (measured from left to right) to N b E, and that it falls with winds

from NNE to SW. The same rule also holds (within a point) in summer and winter separately, and is true also with respect to the changes in the pressure of dry air. The pressure of vapour increases with a wind between E N E to SW b S and diminishes with a wind between SW and NE.

On the average of the year, and during the winter half-year, both the rise and fall have an uninterrupted progression; and the same is true in every case where the change is an increase; but in the summer half-year, besides the maximum rate of barometric fall which occurs with a wind from E, there is a second inferior maximum fall when the wind is from S b W. There are also two maxima in the rate with which the pressure of dry air diminishes during the summer. They are of equal magnitude — .0131 and also occur with winds from E and S b W.

The most rapid changes, together with the winds that accompany them, are shewn in the following tables :

BAROMETRIC PRESSURE.

	SUMMER.		WINTER.		YEAR.	
	Change in 2 hours.	Wind.	Change in 2 hours.	Wind.	Change in 2 hours.	Wind.
Most rapid rise	+ .0162	WNW	+ .0214	NWbW	+ .0194	NWbW½W
Most rapid fall	— .0113	E	— .0343	Ebs	— .0218	E
	— .0093	SbW				

PRESSURE OF DRY AIR.

	SUMMER.		WINTER.		YEAR.	
	Change in 2 hours.	Wind.	Change in 2 hours.	Wind.	Change in 2 hours.	Wind.
Most rapid rise	+ .0237	WNW	+ .0247	NWbW	+ .0239	NWbW½W
most rapid fall	— .0131	E	— .0379	Ebs	— .0244	E
	— .0131	SbW				

PRESSURE OF VAPOUR.

	SUMMER.		WINTER.		YEAR.	
	Change in 2 hours.	Wind.	Change in 2 hours.	Wind.	Change in 2 hours.	Wind.
Most rapid rise	+ .0042	S	+ .0037	Ebs½S	+ .0037	SSE½E
Most rapid fall	— .0079	WbN½N	— .0038	NW½W	— .0054	NWbW½W

