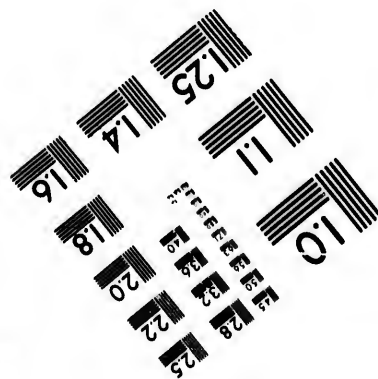
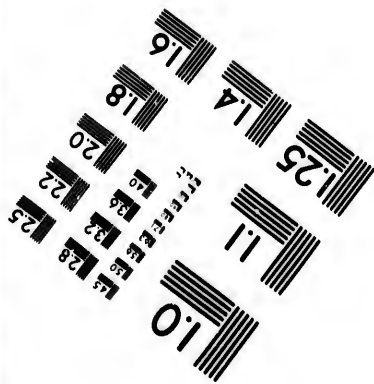
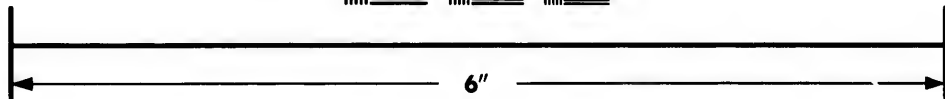
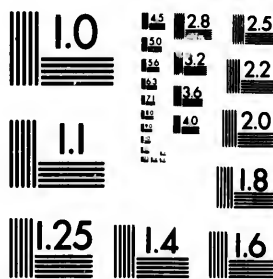


**IMAGE EVALUATION
TEST TARGET (MT-3)**



**Photographic
Sciences
Corporation**

23 WEST MAIN STREET
WEBSTER, N.Y. 14580
(716) 872-4503

25
28
32
22
20
8

**CIHM/ICMH
Microfiche
Series.**

**CIHM/ICMH
Collection de
microfiches.**



Canadian Institute for Historical Microreproductions / Institut canadien de microreproductions historiques

01

© 1982

Technical and Bibliographic Notes/Notes techniques et bibliographiques

The Institute has attempted to obtain the best original copy available for filming. Features of this copy which may be bibliographically unique, which may alter any of the images in the reproduction, or which may significantly change the usual method of filming, are checked below.

L'Institut a microfilmé le meilleur exemplaire qu'il lui a été possible de se procurer. Les détails de cet exemplaire qui sont peut-être uniques du point de vue bibliographique, qui peuvent modifier une image reproduite, ou qui peuvent exiger une modification dans la méthode normale de filmage sont indiqués ci-dessous.

- | | |
|--|--|
| <input type="checkbox"/> Coloured covers/
Couverture de couleur | <input type="checkbox"/> Coloured pages/
Pages de couleur |
| <input type="checkbox"/> Covers damaged/
Couverture endommagée | <input type="checkbox"/> Pages damaged/
Pages endommagées |
| <input type="checkbox"/> Covers restored and/or laminated/
Couverture restaurée et/ou pelliculée | <input type="checkbox"/> Pages restored and/or laminated/
Pages restaurées et/ou pelliculées |
| <input type="checkbox"/> Cover title missing/
Le titre de couverture manque | <input checked="" type="checkbox"/> Pages discoloured, stained or foxed/
Pages décolorées, tachetées ou piquées |
| <input type="checkbox"/> Coloured maps/
Cartes géographiques en couleur | <input type="checkbox"/> Pages detached/
Pages détachées |
| <input type="checkbox"/> Coloured ink (i.e. other than blue or black)/
Encre de couleur (i.e. autre que bleue ou noire) | <input checked="" type="checkbox"/> Showthrough/
Transparence |
| <input type="checkbox"/> Coloured plates and/or illustrations/
Planches et/ou illustrations en couleur | <input type="checkbox"/> Quality of print varies/
Qualité inégale de l'impression |
| <input type="checkbox"/> Bound with other material/
Relié avec d'autres documents | <input type="checkbox"/> Includes supplementary material/
Comprend du matériel supplémentaire |
| <input type="checkbox"/> Tight binding may cause shadows or distortion
along interior margin/
La reliure serrée peut causer de l'ombre ou de la
distortion le long de la marge intérieure | <input type="checkbox"/> Only edition available/
Seule édition disponible |
| <input type="checkbox"/> Blank leaves added during restoration may
appear within the text. Whenever possible, these
have been omitted from filming/
Il se peut que certaines pages blanches ajoutées
lors d'une restauration apparaissent dans le texte,
mais, lorsque cela était possible, ces pages n'ont
pas été filmées. | <input type="checkbox"/> Pages wholly or partially obscured by errata
slips, tissues, etc., have been refilmed to
ensure the best possible image/
Les pages totalement ou partiellement
obscurcies par un feuillet d'errata, une pelure,
etc., ont été filmées à nouveau de façon à
obtenir la meilleure image possible. |
| <input type="checkbox"/> Additional comments:/
Commentaires supplémentaires: | |

This item is filmed at the reduction ratio checked below/
Ce document est filmé au taux de réduction indiqué ci-dessous.

10X	12X	14X	16X	18X	20X	22X	24X	26X	28X	30X	32X
					✓						

The copy filmed here has been reproduced thanks to the generosity of:

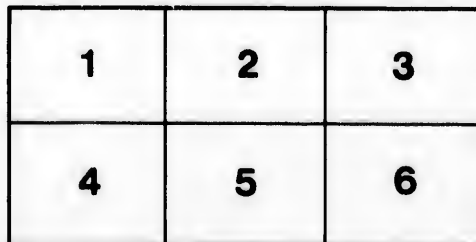
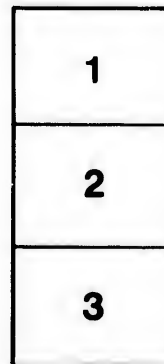
University of British Columbia Library

The images appearing here are the best quality possible considering the condition and legibility of the original copy and in keeping with the filming contract specifications.

Original copies in printed paper covers are filmed beginning with the front cover and ending on the last page with a printed or illustrated impression, or the back cover when appropriate. All other original copies are filmed beginning on the first page with a printed or illustrated impression, and ending on the last page with a printed or illustrated impression.

The last recorded frame on each microfiche shall contain the symbol \rightarrow (meaning "CONTINUED"), or the symbol ∇ (meaning "END"), whichever applies.

Maps, plates, charts, etc., may be filmed at different reduction ratios. Those too large to be entirely included in one exposure are filmed beginning in the upper left hand corner, left to right and top to bottom, as many frames as required. The following diagrams illustrate the method:



L'exemplaire filmé fut reproduit grâce à la générosité de:

University of British Columbia Library

Les images suivantes ont été reproduites avec le plus grand soin, compte tenu de la condition et de la netteté de l'exemplaire filmé, et en conformité avec les conditions du contrat de filmage.

Les exemplaires originaux dont la couverture en papier est imprimée sont filmés en commençant par le premier plat et en terminant soit par la dernière page qui comporte une empreinte d'impression ou d'illustration, soit par le second plat, selon le cas. Tous les autres exemplaires originaux sont filmés en commençant par la première page qui comporte une empreinte d'impression ou d'illustration et en terminant par la dernière page qui comporte une telle empreinte.

Un des symboles suivants apparaîtra sur la dernière image de chaque microfiche, selon le cas: le symbole \rightarrow signifie "A SUIVRE", le symbole ∇ signifie "FIN".

Les cartes, planches, tableaux, etc., peuvent être filmés à des taux de réduction différents. Lorsque le document est trop grand pour être reproduit en un seul cliché, il est filmé à partir de l'angle supérieur gauche, de gauche à droite, et de haut en bas, en prenant le nombre d'images nécessaire. Les diagrammes suivants illustrent la méthode.

ails
du
odifier
une
page

rrata
o

elure,
n à

32X

Received January 15, 1772.

XVIII. *An Account of some curious Fishes, sent from Hudson's Bay; by Mr. John Reinhold Forster, F. R. S. in a Letter to Thomas Pennant, Esq; F. R. S.*

DEAR SIR,

Read Jan. 28, 1773. **T**HE Governor and Committee of the Hudson's Bay Company presented the Royal Society with a choice collection of skins of quadrupeds, many fine birds, and some fish, collected by their servants at the several ports in Hudson's Bay; the Committee of the Royal Society, for examining and describing these curiosities, did me the honour to refer them to me for examination. I wish the following observations on the fish, which I take the liberty to address to you, as a lover of Natural History, and my remarks on the birds and quadrupeds, may convey such informations concerning the zoology of North America, in the study of which you have made such vast progress; and so particularize the animals of the *Arctic* part of that vast continent, that nothing further may prevent
 your

your favouring the public with the result of your studies on that subject.

The four kinds of Hudson's Bay fish are the *Sturgeon*, the *Burbot*, the *Gwiniad*, and a new fish called the *Sucker* at Hudson's Bay.

The Sturgeon was about fourteen inches long, and therefore seems to be a young fish; as it is likewise observed in the list, written by the Gentleman who sent this fish from York Fort.

DESCRIPTION.

Its nose is very long and slender, terminating in a point; the eyes are small; under the projecting snout, before the mouth, are four beards or *cirri*, placed nearly in the same line, and not by pairs, as in some other species of Sturgeon. The mouth is beneath, nearly opposite the eyes, toothless, cartilaginous, semilunar when in its natural position, but round when open; on each side are two nostrils. The whole head is depressed, and very nearly quadrangular; the whole body pentagonal, and tapering towards the tail; the whole skin tough, covered with five rows of uncinated scales; the dorsal series consists of fourteen large roundish scales, and a single one behind the dorsal fin; each of the lateral rows has 35 oblique scales; in the two ventral rows are nine roundish strong scales between the pectoral and ventral fins; one scale is behind the vent, and still another behind the anal fin.

The fish, according to this description, seems to come the nearest to that species of Sturgeon which
I de-

I described in the Philof. Transactions, Vol. LVII. in my *Specimen Historiæ Naturalis Volgenfis*, N° 10. under the name of *Acipenser Ruthenus major, rostro elongato acuminato, paululum fupino*, and which the Ruffians call *Sevruga*. Kramer, in his *Elenchus Vegetabilium & Animalium Auftriæ*, p. 383. is the only writer that I know who takes notice of this fpecies; he calls it *Acipenser rostro acuto, corpore tuberculis spinofis aspero*: the inhabitants of Auftria call it *Shirk*, a name they have no doubt borrowed from the Slavonian name *Sevruga*. The famous painter and traveller Cornelys de Bruyn mentions this kind of fish, but in fo superficial a manner, that one plainly fees he was little, if at all, ufed to discussions in points of Natural History. He fays, * “ the *Sterlet* is the “ beft fish in Ruffia; there are two fpecies of it; “ but, upon the whole, it is nearly related to the “ Sturgeon. The *Severukas* differ in nothing from “ the Sturgeon, which the Ruffians call *Afsetrina*. “ The Caviar is made from the *Beluga*, the *Af-* “ *setrina*, and the *Severuka*.” Had de Bruyn examined the *Sevruga*, he would certainly have found it materially different from the *Osetr* or *Afsetrina*, i. e. the common blunt-nofed Sturgeon of Germany and the Baltick. I fuppofe the Englifh Sturgeon, from your own defcription †, and the drawing in the British Zoology, illustrated by plates, tab. LXXXIX. to be the fame with this kind from Hudfon’s Bay, and with the *Sevruga* of the Ruffians, and the *Shirk* of the Auftrians. The true Sturgeon, which gave

* De Bruyn’s Voyage, Tom. I. &c. Amfterd. fol. p. 93.

† Br. Zool. octavo, Vol. III. p. 99.

the name to the whole genus *, I think to be an unknown fish in England. The species of Sturgeons are more numerous than one is at first aware of; and it would therefore be of some utility, that persons, who have an opportunity of examining all the various kinds at Vienna, and in Ruffia, might do it with more care than has hitherto been done. Some of the sorts which I have seen, I have so described that they may be known again; some I did not see, and gave their characters from books, and from the reports of such persons as had examined them. Mr. Klein, a very ingenious naturalist, has enumerated ten Sturgeons, in his 4th *Missus Piscium*, p. 11—16. and Count Marfigli, in his splendid work about the Danube, Tom. IV. gives the names of at least six Sturgeons, but the characters are not sufficiently settled in both these works. Klein saw but two kinds of Sturgeons, and a third in spirits; and Count Marfigli was not enough of a naturalist to give adequate descriptions of these fish. Therefore it is certain that a careful examination and accurate account of the several species of Sturgeons would greatly illustrate the Natural History of this genus.

The second of the Hudson's Bay fish, is called, by the wild natives of that country, *Marthy*, and is nothing else than our common Burbot, *Gadus Lota*, Linn. only vastly superior in size. The descriptions

* The Germans call this fish *Stoer*, from the old Teutonic word *Stor* or *Stubr*, which signifies *great*, as this fish grows to a very large size. Thus likewise the Scotch call the *Tunny*, Mackerel *Sture*. Vide Mr. Pennant's *Tour in Scotland*, p. 192.

you have given of this fish, in the British Zoology, is entirely corresponding with this specimen, so that it would be superfluous to presume to make any additions to it. I must, however, observe, that, after a most minute examination, I could find no more than six branchiostegous rays in the two specimens from Hudson's Bay, of which you mention seven in the English Burbot, and Artedi as many in his specimens. This great naturalist seems likewise to be right, when he observes that the *cirri*, or beards on the end of the nose, are the valves to one of the nostrils; for I found that these beards, on their under-side, opened into a hole, corresponding with the lower nostril. Mr. Andrew Graham, the collector of the Natural History specimens at Severn River in Hudson's Bay, observes, that these fish constantly swim close to the ground, and are extremely voracious; for he represents them as not content with devouring every fish * they can overcome, but likewise feeding on putrefying deer, or other carrion that comes in their way; even stones are sometimes swallowed to satisfy their insatiable appetite, of which Mr. Graham was himself a witness, having taken a stone of a pound weight out of the stomach of this fish. The pike is often obliged to fall a victim, together with the trout, *Tickomeg*, and others, to this rapacious fish. After sunset, it is caught by a night-hook. It does not masticate its food before deglutition. Its roe and liver are reckoned a delicacy, when fresh caught; but they turn rancid and

* This too is the fish that makes such havock in the Lake of Geneva. P.

oily in a few days, though kept frozen solid all the time. At Hudson's Bay this fish is thought to be dry and insipid; its weight is from one to eight pounds.

The third species of fish, from this cold climate, is by the natives called *Tickomeg*, and is our *Gwiniad* or *Salmo Lavaretus*, Linn.; only the size is somewhat bigger, for the greatest specimen sent over measures 18 inches from the head to the tip of the tail, is $4\frac{1}{3}$ inches deep, and not above an inch and $\frac{1}{4}$ thick. This fish differs in no circumstance from our *Gwiniad*, but the length. You mentioned in your British Zoology (Vol. III. p. 269.) a *Ferra* or *Gwiniad* from Switzerland 15 inches long, as an uncommon size*; the Hudson's Bay fish, as I have before observed, is 18 inches long, and $4\frac{1}{3}$ inches its greatest depth. The great abundance of food, and the small number of inhabitants, who let the fish grow up undisturbed, are perhaps the causes of their uncommonness. They weigh from $1\frac{1}{2}$ pound to 3 pounds, says Mr. Graham; but, I am sure, the fish I examined must, when fresh, have weighed more. These fish abound in the River Severn in Hudson's Bay, from its origin in the great lakes to its mouth, where it empties itself into the bay. The natives catch five or six hundred a day, by means of weirs which they contrive in the river: they will not take bait, and are poor at the breaking of the ice in the river. In the middle of the summer, after a gale of wind,

* However, the *Gwiniads* of Lapland, a similar climate to that of the Hudson's Bay, are vastly large. Brit. Zool. III. 267. note.

they are often found thrown up into the marshes, and on the shoals, where they remain at the recess of the water and abating of the wind, and serve as food to numbers of crows. The inhabitants of Hudson's Bay think this fish very sweet, and good to eat, contrary to the opinion of many Europeans.

The fourth and last fish brought from Hudson's Bay is there called a *Sucker*, because it lives by suction, according to Mr. Graham's account, who likewise says, that there are two varieties of this fish, both of a whitish colour, but one distinguished by a mixture of beautiful red. In the smallest of two specimens brought over, a broad stripe of red could be observed all along the *linea lateralis*. They are very numerous in the creeks and rivers, and troublesome in overburdening the nets. They are not deemed a palatable food, being very soft, and full of small bones. They weigh from one half to $2\frac{1}{2}$ pounds.

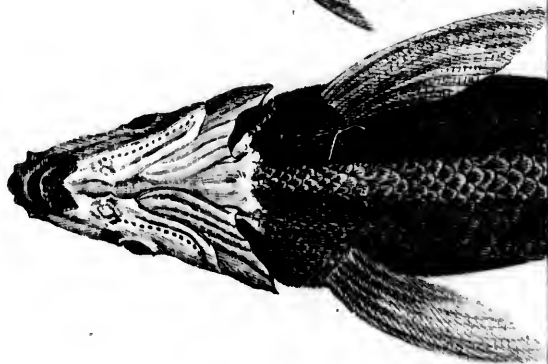
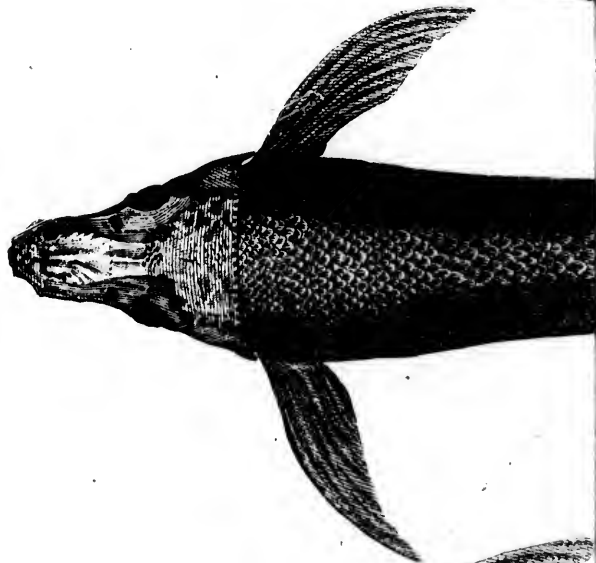
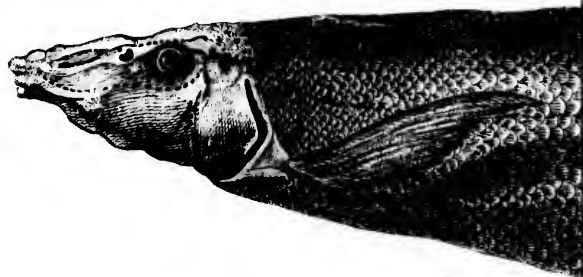
The above is literally what Mr. Graham says of this fish, and all that is known of its natural history. Examining it carefully, I found it was a new species of the genus of *Cyprinus*, or *Carp*.

The head is broader than the body, gradually decreasing towards the nose, full of elevations and tubercles, nearly quadrangular, and not scaly. The mouth is quite under the head, as in the *Loricaria*, when shut, semilunar; when open, round; not far from the extremity of the snout, and included in small round lips. To the under-lip is fixed a bilobated, beard-like, papillose caruncula; it has no teeth. The

eyes are large, but the colour of the iris could not be determined. The number of the branchiostegous rays is three. The body is flat, tapering towards the tail, and scaly. The greater specimen measures very near 15 inches from the nose to the extremity of the tail; next to the head it is nearly two inches thick, about the dorsal fin $1\frac{1}{4}$ inch; its greatest depth before the ventral fins is $2\frac{1}{4}$ inches. On the snout are about five round prominent tubercles; two nostrils are found on each side, the biggest next before the eye is kidney-shaped. The covers of the gills are double, and divided; the head has several sutures; over each eye, in a cavity, are two longitudinal ones, joined opposite the nostrils by a still shorter transverse one; on the covers of the gills are two, on each side one, beginning near the lobes of the caruncula of the under-lip, and going up arched towards the eye. Near the extremity of the snout begins on each side a longitudinal one; it passes under the eye, and mounts in a curvature behind it, then it goes on straight to the end of the head, where it again gets downwards, and joins the lateral line. Where the head joins to the body, these two sutures are connected by a transversal one, which, as it were, separates the head from the body. The lateral line at first descends from the head, but then runs on straight, rather nearer the back than the body, to the beginning of the tail. The scales are small near the head and back, increasing in size towards the middle and tail, close to which they are again smaller. The dorsal fin is placed somewhat behind the equilibrium of the fish, rhomboidal, and consisting of twelve strong branched rays. The pectoral fins are lanceo-

ot
as.
ls.
es
y
s.
h.
t
o
t
e
l
-
l
e
E
k
e

Cyprinus Catostomus



lanceolated, fixed under the covers of the gills, and have 17 rays. The ventral fins have 10 or 11 rays, and are placed in the middle of the belly, and under the dorsal fin. The anal fin consists of eight branched strong rays. The tail is somewhat forked or concave, and consists of seventeen rays.

I have been as circumstantial as possible in describing this new species, and join here, together with a drawing [See TAB. VI.], a Latin scientific description of the same.

I am,

With the truest regard,

DEAR SIR,

Your most obedient,

humble servants,

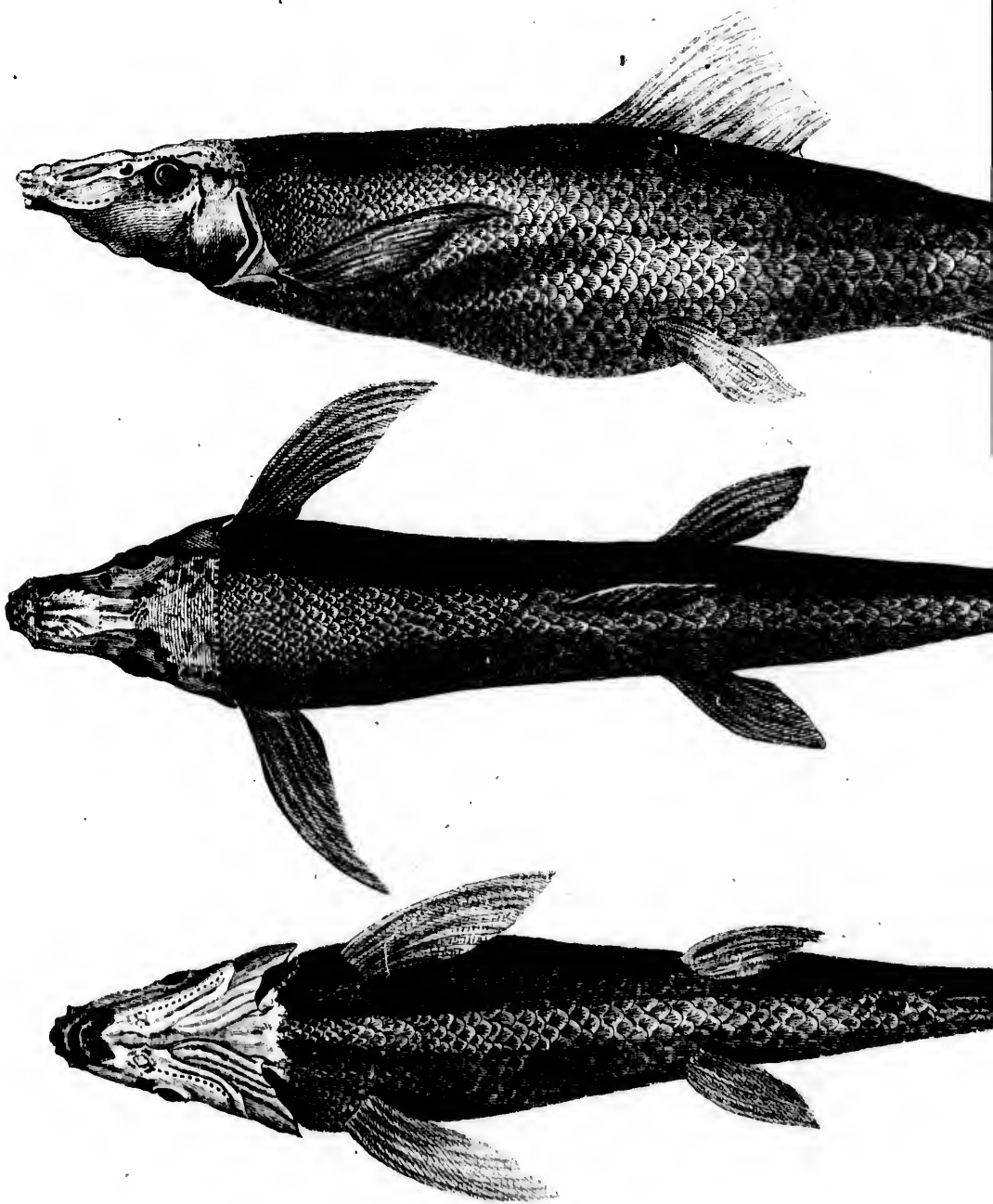
Jn^o Reinhold Forster.

N^o 2. Somerfet Stable-yard, Strand,
January 12, 1772.

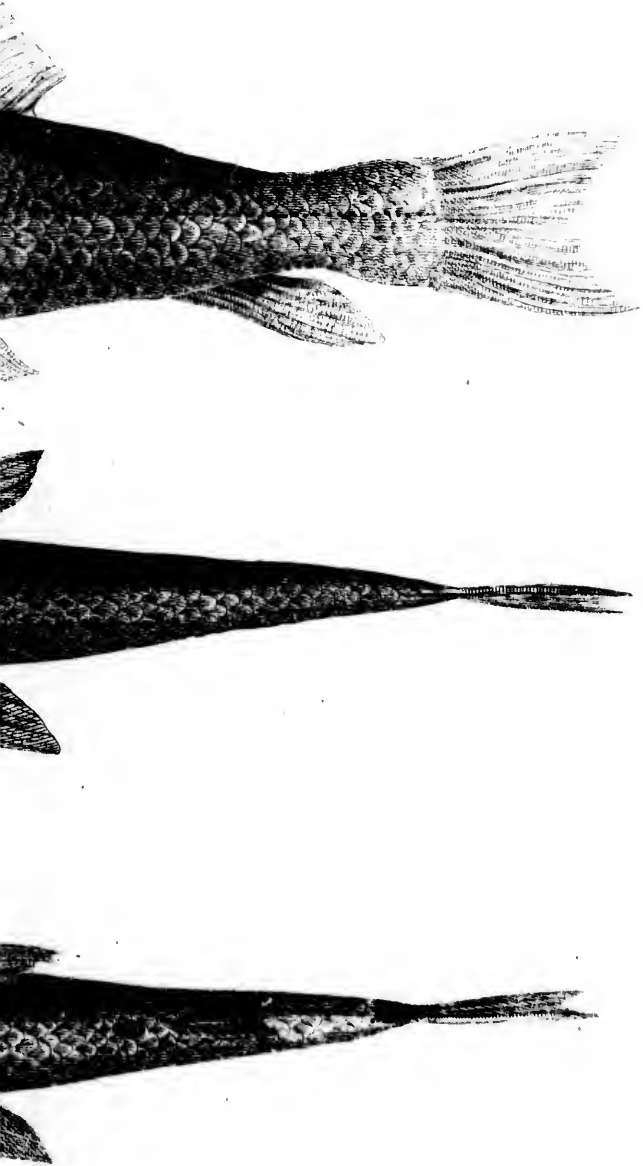
Kato

Cyprinus Catostomus.

The



The Sucker.



Κατω }
 infra } CYPRINUS Catoſtomus.
 Στομαος.

CYPRINUS pinna ani radiis VIII. labio imo caruncula bilobata papilloſa, cauda bifida. Pinnæ D. 12. P. 17. V. 10.—11. A. 8. C. 17.
 Habitat in Sinus Hudſonis fluminibus copioſe, ſurgendo paſcitur. Anglis, the *Sucker*.

DESCR. *Caput* ſubtetragonum, verſus apicem ſenſim attenuatum, obtuſiuſculum, corpore fere craſſius, & minus latum.
Tubercula globoſa, confertiora in apice roſtri, circiter quinque; carinata & acuminata, in vertice ſparſa.
Foramina (ſive nares) gemina, quorum alterum minus, alterum oculis proximum, majus, reniforme.
Oculi magni, ad marginem ſuperficieſ verticalis capitis ſiti, fere in medio inter apicem & baſin. *Irides*
Opercula branchiarum magna, nuda; at ſub oculis opercula ſpuria, primo intuitu pro radiis membranæ branchioſtegæ facile ſumenda.
Suturae in capite plures catenulatæ; una utrinque brevis, ſupra oculos, naresque, nec baſin nec apicem capitis attingens, è regione narium juncta per ſuturam tranſverſalem breviffimam; ſecunda utrinque incipiens ad angulum loborum carunculæ,

carunculæ, imo labio adnata, in operculo spurio recurvatur, & prope oculos definit: tertia utrinque incipiens prope rostri apicem, linea recta sub oculis ducta, dein curvatur & ascendit versus verticem; ibi rursus curvatur & jungitur lineæ laterali, pone aperturam branchialem descendenti: connectuntur hæ duæ lineæ laterales sutura transversa, quæ caput à reliquo corpore distinguit.

Membrana Branchiostega, radiis tribus brevibus, validis.

Rictus inferus, lunulatus, seu semiorbicularis, labiis inclusus tenuibus, superiore (ore scilicet clauso) concavo, inferiore convexo.

Caruncula lata, labio inferiori adnata, crassiuscula, carnosa, papillis tecta, oris angulos ambiens, medio in lobos binos profunde divisa.

CORPUS lateribus compressiusculum, at versus abdomen magis compressum, cuneiforme, capite ad caudam sensim attenuatum, tectum squamis minoribus, ovatis, striatis versus caput minimis, pallide argenteis, in quibusdam circa lineam lateralem aureo-rubris.

Linea lateralis recta, dorso parallela, ad caput super aperturam branchialem ascendens.

Anus.

Anus parvus, caudæ multo propior quam capiti.

Pinna dorsi pone æquilibrium nonnihil posita, rhomboidalis, radiis validis, ramosis duodecim.

Pinnæ pectorales lanceolatæ, infra opercula sitæ radiis 17 longitudine partem quartam totius piscis (exclusis capite & caudâ) æquant.

Pinnæ ventrales radiis 10 vel 11 oblongæ, in medio ventris, sub pinna dorsali posita, pinna pectorali dimidio breviores.

Pinna ani caudæ propinqua, longitudine fere pinnæ pectoralis, radiis octo validis, ramosis.

Cauda leviter bifurca, pinnam pectoralem longitudine & numero radiorum æquans.

Longitudo totius piscis unciarum 15 pedis Anglicani.

Latitudo unciarum circiter 3 ante pinnas ventrales.

Crassities corporis prope caput unciarum fere 2, ante pinnam dorsalem uncia & quadrantis.

P. S. Besides the above-mentioned fish, the servants of the Hudson's Bay Company have likewise sent over from thence the common *River Crayfish* (*Cancer Astacus*, *Linn.*), which, in every particular, corresponds with the English one.

Received

