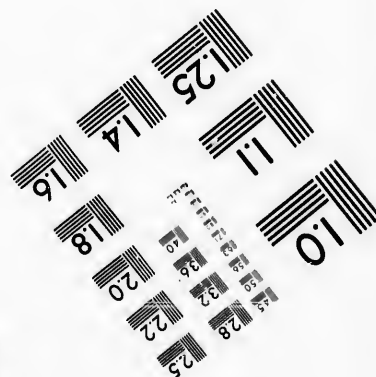
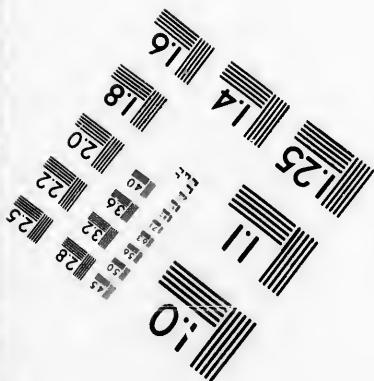
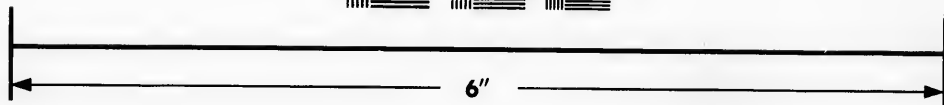
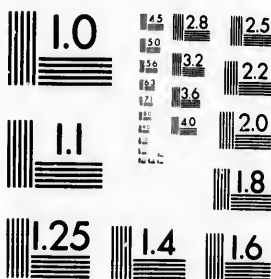


**IMAGE EVALUATION
TEST TARGET (MT-3)**



**Photographic
Sciences
Corporation**

23 WEST MAIN STREET
WEBSTER, N.Y. 14580
(716) 872-4503

**CIHM
Microfiche
Series
(Monographs)**

**ICMH
Collection de
microfiches
(monographies)**



Canadian Institute for Historical Microreproductions / Institut canadien de microreproductions historiques

© 1992

The Institute has attempted to obtain the best original copy available for filming. Features of this copy which may be bibliographically unique, which may alter any of the images in the reproduction, or which may significantly change the usual method of filming, are checked below.

- Coloured covers/
Couverture de couleur
- Covers damaged/
Couverture endommagée
- Covers restored and/or laminated/
Couverture restaurée et/ou pelliculée
- Cover title missing/
Le titre de couverture manque
- Coloured maps/
Cartes géographiques en couleur
- Coloured ink (i.e. other than blue or black)/
Encre de couleur (i.e. autre que bleue ou noire)
- Coloured plates and/or illustrations/
Planches et/ou illustrations en couleur
- Bound with other material/
Relié avec d'autres documents
- Tight binding may cause shadows or distortion
along interior margin/
La reliure serrée peut causer de l'ombre ou de la
distorsion le long de la marge intérieure
- Blank leaves added during restoration may appear
within the text. Whenever possible, these have
been omitted from filming/
Il se peut que certaines pages blanches ajoutées
lors d'une restauration apparaissent dans le texte,
mais, lorsque cela était possible, ces pages n'ont
pas été filmées.
- Additional comments: /
Commentaires supplémentaires:

This item is filmed at the reduction ratio checked below/
Ce document est filmé au taux de réduction indiqué ci-dessous.

10X	14X	18X	22X
<input type="checkbox"/>	<input type="checkbox"/>	<input type="checkbox"/>	<input checked="" type="checkbox"/>
12X	16X	20X	

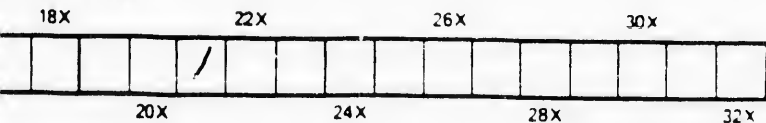
and Bibliographic Notes / Notes techniques et bibliographiques

best original
is copy which
may alter any
ch may
filming, are

L'Institut a microfilmé le meilleur exemplaire qu'il lui a été possible de se procurer. Les détails de cet exemplaire qui sont peut-être uniques du point de vue bibliographique, qui peuvent modifier une image reproduite, ou qui peuvent exiger une modification dans la méthode normale de filmage sont indiqués ci-dessous.

- Coloured pages/
Pages de couleur
 - Pages damaged/
Pages endommagées
 - Pages restored and/or laminated/
Pages restaurées et/ou pelliculées
 - Pages discoloured, stained or foxed/
Pages décolorées, tachetées ou piquées
 - Pages detached/
Pages détachées
 - Showthrough/
Transparence
 - Quality of print varies/
Qualité inégale de l'impression
 - Continuous pagination/
Pagination continue
 - Includes index(es)/
Comprend un (des) index
- Title on header taken from: /
Le titre de l'en-tête provient:
- Title page of issue/
Page de titre de la livraison
 - Caption of issue/
Titre de départ de la livraison
 - Masthead/
Générique (périodiques) de la livraison

checked below/
on indiqué ci-dessous.



The copy filmed here has been reproduced thanks to the generosity of:

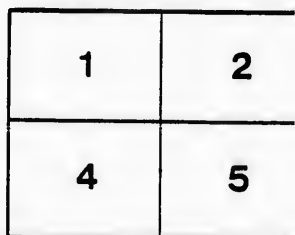
Department of Rare Books
and Special Collections,
McGill University, Montreal.

The images appearing here are the best quality possible considering the condition and legibility of the original copy and in keeping with the filming contract specifications.

Original copies in printed paper covers are filmed beginning with the front cover and ending on the last page with a printed or illustrated impression, or the back cover when appropriate. All other original copies are filmed beginning on the first page with a printed or illustrated impression, and ending on the last page with a printed or illustrated impression.

The last recorded frame on each microfiche shall contain the symbol \rightarrow (meaning "CONTINUED"), or the symbol ∇ (meaning "END"), whichever applies.

Maps, plates, charts, etc., may be filmed at different reduction ratios. Those too large to be entirely included in one exposure are filmed beginning in the upper left hand corner, left to right and top to bottom, as many frames as required. The following diagrams illustrate the method:



reproduced thanks

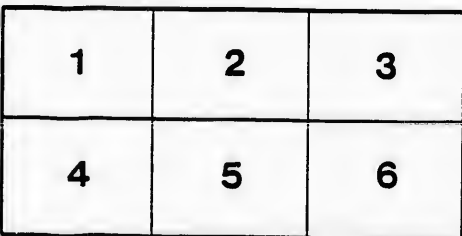
s
al.

the best quality
on and legibility
ing with the

covers are filmed
and ending on
illustrated impres-
appropriate. All
beginning on the
trated impres-
e with a printed

microfiche
meaning "CON-
aining "END").

be filmed at
too large to be
e are filmed
corner, left to
y frames as
s illustrate the



L'exemplaire filmé fut reproduit grâce à la
générosité de:

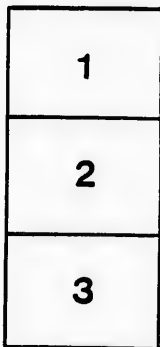
Department of Rare Books
and Special Collections,
McGill University, Montreal.

Les images suivantes ont été reproduites avec le
plus grand soin, compte tenu de la condition et
de la netteté de l'exemplaire filmé, et en
conformité avec les conditions du contrat de
filimage.

Les exemplaires originaux dont la couverture en
papier est imprimée sont filmés en commençant
par le premier plat et en terminant soit par la
dernière page qui comporte une empreinte
d'impression ou d'illustration, soit par le second
plat, selon le cas. Tous les autres exemplaires
originaux sont filmés en commençant par la
première page qui comporte une empreinte
d'impression ou d'illustration et en terminant par
la dernière page qui comporte une telle
empreinte.

Un des symboles suivants apparaîtra sur la
dernière image de chaque microfiche, selon le
cas: le symbole \rightarrow signifie "A SUIVRE", le
symbole ∇ signifie "FIN".

Les cartes, planches, tableaux, etc., peuvent être
filmés à des taux de réduction différents.
Lorsque le document est trop grand pour être
reproduit en un seul cliché, il est filmé à partir
de l'angle supérieur gauche, de gauche à droite,
et de haut en bas, en prenant le nombre
d'images nécessaire. Les diagrammes suivants
illustrent la méthode.



H. L. Blodgett

BROWNLEE'S

INDEXED

RAILWAY AND GUIDE

Map of Manitoba

PUBLISHED BY AUTHORITY OF THE
PROVINCIAL GOVERNMENT.

A COMPLETE ENCYCLOPÆDIA

— OF —

THE PRAIRIE PROVINCE.

FOR SALE BY ALL NEWSDEALERS AND BOOKSELLERS.

PRICE 25c.

PUBLISHED BY J. H. BROWNLEE, BRANCOON, MAN.

NORTHWEST AGENT FOR

"The Dominion Illustrated."

INTENDING SETTLERS

In Manitoba and the Northwest Territories will find it to their advantage to call at the Northwest head office of the Massey Manufacturing Co., Market Square, Winnipeg, or at their permanent local offices throughout the country, where they will in a few hours gain more reliable information about the surrounding district than they could learn in weeks by ordinary methods.

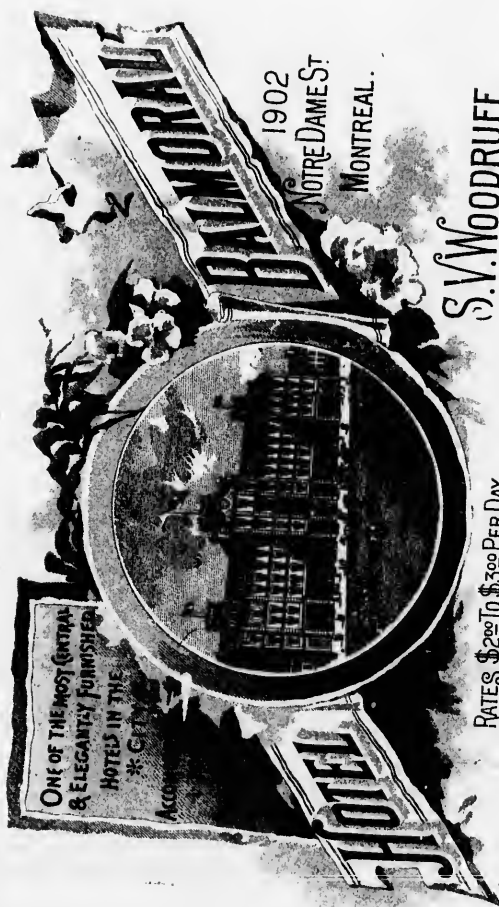
Wherever you Pitch your Tent

Look up the Massey Agent. He can tell you all about the settlers, the kind of soil, wood, water, proximity to schools and churches, the average price of land per acre, where the

Free Grant Government Lands

Are located, the average price of horses, Oxen, Cows, Lumber, &c., &c., and if you don't like his Plows, Harrows, Seeders, Drills, Wagons, Mowers, Horse Rakes, Self Binding Harvesters, &c., profit by his experience.

SEE THE BACK COVER.



ONE OF THE MOST CENTRAL
& ELEGANTLY FURNISHED
HOTELS IN THE
* CITY *

Accommodations

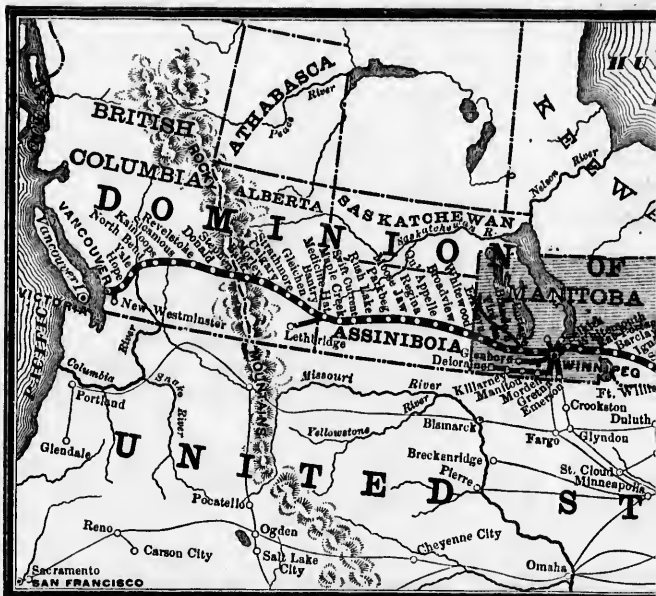
1902
NOTRE DAME ST.
MONTREAL.

S.V. WOODRUFF,
Manager.

RATES \$2.00 TO \$3.00 PER DAY.

The Burdick & Co. Co.

Consult Sectional MAP OF MANITOBA

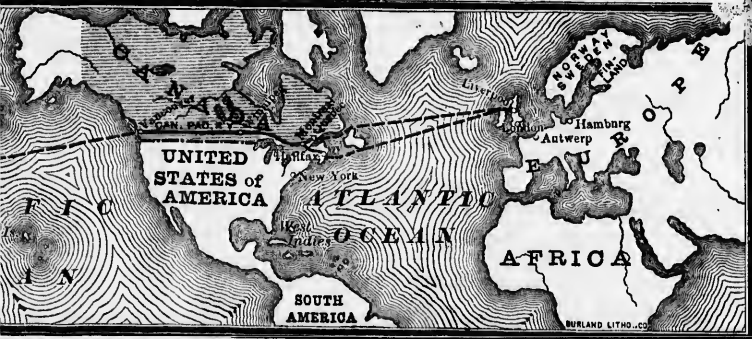
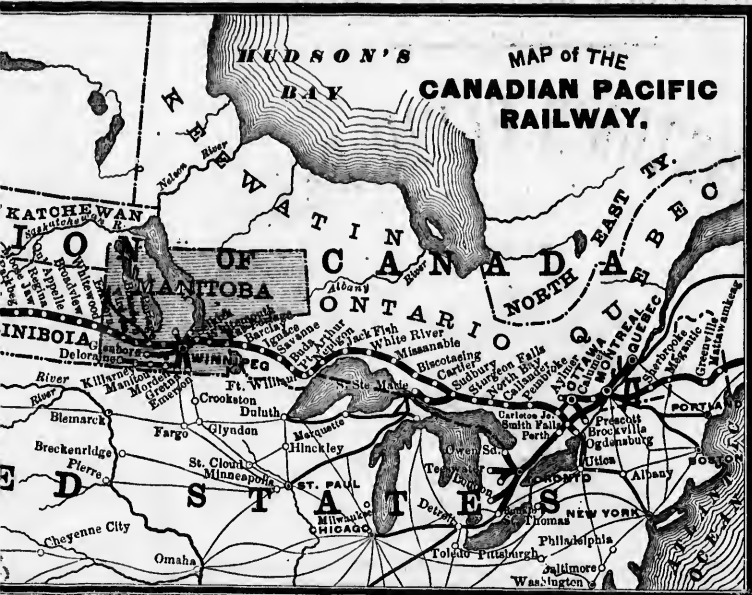


MAP SHOWING STEAM-SHIP ROUTES CONNECTING WITH



If your friends cannot get this GUIDE from the supply it by mail on receipt of 25 cts.

1 MAP OF MANITOBA in Back of Guide.



Get this **GUIDE** from the news-dealers, the Publisher will
 of 25 cts.

J. H. BROWNLEE, Brandon, Man.

The Glory of a Man is his Strength !

JOHNSTON'S FLUID BEEF

—IS—



The Great Strength Giver !

It is not a mere Extract of
Meat, but contains
all the nutritious and life giving
elements of Meat.

A PERFECT FOOD FOR THE SICK.

A WARMING
AND NUTRITIOUS BEVERAGE.

A POWERFUL INVIGORATOR !

his Strength !

WID BEEF

h Giver !

Extract of
ntafns
nd life giving
Meat.

THE SICK.

G
VERAGE.

VIGORATOR !

MANITOBA ADVERTISEMENTS.

Hudson's Bay Company WINNIPEG,

<u>Portage la Prairie,</u>	<u>Kamloops, B. C.,</u>
<u>Fort Qu'Appelle,</u>	<u>Yale, B.C.,</u>
<u>Calgary,</u>	<u>Victoria, B.C.,</u>
<u>Fort McLeod,</u>	<u>Morden,</u>
<u>Deloraine,</u>	<u>Manitou.</u>

The Company beg to call the attention of the travelling public and intending settlers to their

GENERAL STORES

Established at the above points on the Canadian Pacific Railway. All these stores are supplied with

**A WELL ASSORTED STOCK OF
GENERAL MERCHANDISE.**

The quality of all articles, as also the prices, will be found eminently satisfactory, and patronage is solicited.

HUDSON'S BAY COMPANY

INDEX TO ADVERTISERS.

MANITOBA.

ADVERTISING MAPS—J. H. Brownlee.....	Page 8
ALLOWAY & CHAMPION—Bankers, Winnipeg.....	" 8
CANADIAN PACIFIC RAILWAY—Land Dept.—Winnipeg...	" 27
CLARENDON HOTEL, Winnipeg.....	" 10
EMERSON & McNEIL, Brandon.....	" 16
HENDERSON'S POCKET GAZETTEER, Winnipeg.....	" 28
HOPE & Co.—Tents, etc., Winnipeg.....	" 8
HUDSONS BAY Co., Winnipeg.....	" 67
IMPERIAL BANK OF CANADA, Winnipeg.....	" 99
KELLY, T. E., Livery, Brandon.....	" 16
LANGHAM HOTEL, Brandon.....	" 10
MASSEY M'F'G Co.—Implements.....	Outside Back Cover
MASSEY M'F'G Co.—Hints to Settlers.....	Inside Front Cover
MANITOBA LANDS FOR SALE—P. S. Stevenson, Montreal, Page 14	
MANITOBA LOAN COLLEGE.....	" 30
NORTHERN PACIFIC AND MANITOBA RAILWAY.....	" 4
NORTHERN PACIFIC RY.....	" 6
PLAXTON, C. & W., Furnaces, Winnipeg.....	" 20
SUN LIFE INSURANCE Co.—Thos. Gilroy, Mgr., Winnipeg.....	" 24
WHITLA, R. J. & Co.—Wholesale Dry Goods, Winnipeg.....	" 12
WINNIPEG DISTRICT MAP—R. E. Young, D.L.S.....	" 2
WESTERN HOTEL, Carberry—T. Huckell, Prop.....	" 70
WILSON & SMYTH, Furniture, Brandon.....	" 19

MONTREAL.

BENNY, MACPIERSON & Co.—Wholesale Hardware.....	" 18
BALMORAL HOTEL—S. V. Woodruff, Mgr.....	Front C. P. R. Map
BURLAND LITHOGRAPHING Co.....	Page 20
CANADA BANK NOTE Co.....	Back of Manitoba Map
DOMINION ILLUSTRATED, THE—G. E. Desberrats, Mgr.....	Back of Manitoba Map
EDISON SYSTEM OF ELECTRIC LIGHTING.....	Page 22 and Back of Manitoba Map
GOLDIE & McCULLOCH—Safes (Montreal Agency).....	Back of Manitoba Map
JOHNSTON'S FLUID BEEF—The Great Strength Giver.....	Back of C. P. R. Map
LYMAN, KNOX & Co.—Wholesale Druggists.....	Back of Manitoba Map
MORRIS, A. W. & Co.—Binder Twine.....	Back of Manitoba Map
MACINTYRE DUNCAN S., Metal Broker.....	Page 13
PECK, BENNY & Co.—Nails, etc.....	" 24
SUN LIFE INSURANCE Co.....	" 24
TEES & Co.—Desks, Revolving Book Cases, etc.....	Back of Manitoba Map
THE WILLIAM JOHNSTON Co.—Prepared Paints.....	Back of Manitoba Map

OTTAWA.

AUTOMATIC REFRIGERATOR Co.....	Back of Manitoba Map
HARRIS & CAMPBELL—Art Furniture.....	Page 26
MASON & JONES.....	" 30

INDEX

—TO—

BROWNLEE'S MAP OF MANITOBA

CITIES, TOWNS, POST OFFICES
AND MUNICIPALITIES

ALPHABETICALLY ARRANGED.

Towns, etc.,pages 5, 7, 9, 11 and 13
Municipalities..... " 15, 17, 19, 21 and 23
Homestead Regulations.....page 25
Government Land Offices and Addresses. " 27

NOTE.—The **LETTERS** after the names correspond to those in the outer borders of the Map and indicate the square or township in which the name will be found.

The names in large capitals are the more important grain centres in the Province. Those in italics are Railway Stations.

ABBREVIATIONS.

C. P. R.—Canadian Pacific Ry.
M. & N. W.—Manitoba & North Western Ry.
C. N. W. C.—Great Northwest Central Ry.
N. P. & M.—Northern Pacific & Manitoba Ry.
S. & W.—Saskatchewan & Western Ry.
H. B.—Hudson Bay Ry.

USE JOHNSTON'S FLUID BEEF

The Great Strength Giver.

ERS.

Page 2
" 8
" 27
" 70
" 16
" 28
" 8
" 27
" 29
" 16
" 10
Back Cover
Front Cover
Pl. 2 Page 14
" 30
" 4
" 6
" 29
" 24
" 12
" 2
" 10
" 19
" 18
R. Map
Page 20
toba Map
toba Map
toba Map
R. Map
toba Map
toba Map
Page 13
" 24
" 24
toba Map
toba Map
toba Map
Page 26
" 30

THE VACANT LANDS AROUND WINNIPEG.

Intending purchasers and absentee owners requiring reliable information about the VACANT LANDS should purchase

YOUNG & BROWNLEE'S WINNIPEG DISTRICT MAP,

In neat Cloth Cover, Price \$1.00.

ADDRESS

R. E. YOUNG, D.L.S.,
WINNIPEG, MAN.

TO ADVERTISERS.

The publisher of this Guide is prepared to furnish close estimates for

SHEET MAPS

for any Province in or part of the

DOMINION OF CANADA.

J. H. BROWNLEE, D.L.S.

BRANDON, MAN.

Asses
Adelp
Ardp
Arrow
Aiker
Arro
Awer
Alces
.Ulex
.Urde
Aust
Alma
Ash G
Assin
Arch
Argyl
Agath
Aubig
Arma
Anne
Andr
Alph
Arnes

Butte
Balm
Binsc
BIN
N.
Bellev
Benla
BIR
BOIS
C.I
Bassa
BRA
& C
Brand
Brook
Bradw
Brierv
Burnh

ENTS.

LANDS

EG.

s requiring re-
LANDS

EE'S

MAP,

.00.

L.S.,

PEC, MAN.

RS.

furnish close

APS

ADA.

L.S.

N, MAN.

INDEX TO MAP OF MANITOBA.

A.

Assessippi.....B f
 Adelpha.....K b^t
 Ardpatrik.....A b
 Arrow River.....D p
 Aikenside.....L q
 Arrowton, G.N.W.C.E o
 Aweme.....N u
 Alester.....K y
 Alexander, C.P.R....I s
 Arden, M.&N.W....P s
 Austin, C.P.R.....S r
 Almassippi.....X w
 Ash Creek.....P x
 Assiniboine.....Y q
 Archibald.....V z
 Argyle.....C¹ o
 Agathe, St.....E¹ v
 Aubigny.....E¹ w
 Arnaud, br'nch C.P.R.F¹ z
 Anne, St.....I¹ u
 Andrews, St.....F¹ q
 Alphonse, St.....R x
 Arnes.....G¹ h

B.

Butterfield.....A b^t
 Balmerino.....B k
 Binscarth Farm.....B j
 BINS-CARTH, M.&
 N.W. Ry. Junc....B j
 Belleview.....E v
 Beulah, G.N.W.C....D n
 BIRTLE, M.&N.W.D l
 BOISSEVAIN, br'cn
 C.P.R.....J z
 Basswood.....K n
 BRANDON, C.P.R.
 & G.N.W.C.....K s
 Brandon Hills.....L t
 Brookdale.....N q
 Bradwardine.....G q
 Brierwood.....G r
 Burnbank.....C p

Bridge Creek, M.&
 N.W.....N n
 Blake.....R n
 Beaver Creek.....T q
 Bagot, C.P.R.....U r
 Beaconsfield.....U w
 Burnside, C.P.R....V r
 Barnsley, C.P.R. br..Z v
 Bonnie Doon.....A¹ o
 Blumenort.....B¹ b^t
 Jaie St. Paul.....B¹ q
 Blythfield.....C¹ u
 Balmoral.....E¹ n
 Bergen, C.P.R.....E¹ r
 BONIFACE, ST.,
 C.P.R.....F¹ r
 Bird's Hill, C.P.R....G¹ r
 Beausejour, C.P.R....J¹ p
 Brokenhead.....K¹ o
 Broquerie, La.....K¹ w
 Balsam Bay.....J¹ l
 Beaver Rapids.....A m

C.

Castlevery.....A e
 Crewe.....B l
 Carlingville.....E p
 Chumah, G.N.W.C...F o
 Cadurcis.....K n
 Carrolton.....K v
 Chater, C.P.P.....L s
 Clan William.....M m
 Creeford.....M p
 Craigilea.....O x
 CARTWRIGHT,
 C.P.R. branch....P a¹
 CARBERRY, C.P.R.P s
 CLEARWATER,
 C.P.R. branch....R a¹
 CRYSTAL CITY,
 C.P.R. branch....R a¹
 CYPRESS RIVER,
 C.P.R. branch....R v
 Camille.....S u
 Calf Mountain.....W a¹

USE JOHNSTON'S FLUID BEEF
 The Great Strength Giver.

Northern Pacific & Manitoba RAILWAY.

The only Daily Line running
THROUGH VESTIBULED TRAINS

Pullman Sleepers and Dining Cars

—FROM—

WINNIPEG TO THE SOUTH.

THROUGH TICKETS

—SOLD—

TO ALL POINTS IN CANADA,

Including British Columbia and the United States,
making close connection at all Union Depots.

All Baggage destined for points in Canada checked
through, doing away with Customs troubles.

OCEAN PASSAGE AND BERTHS SECURED

TO AND FROM GREAT BRITAIN AND EUROPE.

All First-Class Steamship Lines represented.

Round Trip Excursion Tickets to the Pacific Coast,
GOOD FOR SIX MONTHS.

For full information, call on or write to any of the
Company's Agents.

H. J. BELCH, City Ticket Agent, 285 Main St., Wpg.

HERBERT SWINFORD, General Agent,

457 Main St., Winnipeg.

J. M. GRAHAM,
Gen'l Manager.

Clarkleigh.....Y k	Fort Ellice, H. B. Post. B m
Campbellville.....Y w	<i>Fox Warren, M.&</i>
CARMAN.....Y w	N.W.....C k
Charles, St.....E ¹ s	Florenta.....Q m
Clandeboye.....G ¹ n	Fairburn.....K z
Chortitz.....H ¹ v	Fortier.....A ¹ r
Cook's Creek.....H ¹ q	Foxton.....E ¹ m
Clearsprings.....I ¹ v	François Xavier, St...C ¹ r

D.

DARLINGFORD,
C.P.R. branch.....W z

De Clare, G.N.W.C. C n

D E I O R A I N E,
C.P.R. branch.....G z

Dalton.....H s

Desford.....J a¹

Drumconnor.....V q

Douglas, C.P.R. M r

Dry River.....R y

Donore, R.R.V.R. D¹ v

Dufrost, C.P.R. br. F¹ x

Dynevor.....H¹ o

Dundee.....I¹ r

DOMINION CITY,
C.P.R. branch.....F¹ a¹

E.

Elm Valley, C.P.R. br. B u

ELKHORN, C.P.R. B q

Elton.....L r

Eden.....O m

E L M C R E E K,
C.P.R. branch.....Z u

Elphinstone.....H k

EMERSON.....C¹ m

EMERSON, C.P.R.
branch.....E¹ b¹

East Selkirk, C.P.R. H¹ p

F.

Fort Alexander.....L¹ j

Fort Ellice, G.N.W.C. B m

G.

Gristwold, C.P.R. G t

Glendenning.....O z

Grund.....P w

GLENBORO, C.P.R.
branch.....P v

Glenora.....Q z

Grange.....R w

GLADSTONE, M.&
N.W.....S o

Golden Stream.....S p

GRETNA, C.P.R. br. C¹ b¹

Greenwood.....E¹ n

Gauthier.....E¹ a¹

Gimli.....G¹ j

Green Ridge.....G¹ a¹

Gonor, C.P.R. H q

Giroux.....J¹ v

Glendale.....N p

H.

Harrowby, M.&N.W. A i

Hargrave, C.P.R. C i

Hernesfield.....E b¹

Hamiota.....G o

Hillview.....G r

Hartney.....G w

Hazelwold.....K u

Hayfield.....K u

Heaslip.....K x

Holmesfield.....N a¹

Hun's Valley.....N m

HOLLAND, C.P.R.
branch.....S v

High Bluff, C.P.R. X q

USE JOHNSTON'S FLUID BEEF
The Great Strength Giver.

6 MANITOBA ADVERTISEMENTS.

SUPERB TRAIN SERVICE,
Good Connections, Fast Time,

—AND—

NO DELAYS,

Can all be secured by taking the

**NORTHERN
PACIFIC R. R.**

BETWEEN THE EAST AND

Dakota, Manitoba, Montana, Idaho,
Washington Territory, Oregon,
British Columbia and California.

THIS IS THE

Yellowstone Park and Dining Car Route.

The NORTHERN PACIFIC is the SHORT LINE to HELENA, TACOMA, SEATTLE and PORTLAND, Ore., is the ONLY LINE running Pullman Sleeping Cars to Fergus Falls, Grand Forks, Grafton, Winnipeg, Fargo, Helena and Butte City, and is the only line reaching Jamestown, Bismarck, Miles City, Billings, Bozeman, Missoula, Spokane Falls, Tacoma and Seattle.

PULLMAN SLEEPERS, DINING CARS

—AND—

FREE COLONIST SLEEPERS

ON EXPRESS TRAINS DAILY.

**This Line offers Special Attractions to
California Tourists.**

For full information concerning rates, time, etc., call on or address your nearest ticket agent, any travelling passenger agent of this company, or

CHAS. S. FEE,

Gen. Pass. and Ticket Agt. N.P.R.R.,

St. Paul, Minn.

Hochstadt.....H¹ w
 Haviland.....J y

I.

Indian Ford.....U t
 Icelandic River.....G¹ f

J.

Jolys.....G¹ x
 Jean Baptiste, St.....D¹ y
 James, St.....F¹ r

K.

Kinesota.....S g
 Kola.....A s
 Kelloe, M.&N.W.....F l
 KILLARNEY,
 C.P.R. branch.....M z
 Kingsley.....T y
 Kildonan, C.P.R. br.....F¹ r
 Kenney, C.P.R.....J s
 Hanlan.....C¹ p
 Headingly, C.P.R.....D¹ s

L.

Lake Francis.....Z n
 Landsburn.....D k
 Lucas.....E o
 Lippentott.....A r
 Lennox.....F b¹
 Lagoch.....F p
 Lothair.....H q
 La Riviere, C.P.R. br.T z
 Leon, St.....U x
 Lorne.....V y
 Lintrathen.....X x
 Lundyville.....X i
 Lowestoft.....Z y
 Laurent, St.....Z l
 Letellier.....D¹ a¹
 Letellier Station, R.R.
 V.R.....E¹ a¹

La Salle.....E¹ u
 Lower Fort Garry.....G¹ p
 Lorette.....H¹ t
 La Broquerie.....K¹ w
 Langvale.....L w
 Little Pembina, C.P.R.
 branch.....L z

M.

Manda.....C u
 Melita.....C z
 Menota.....D y
 Michie.....E r
 Montefiore.....F a¹
 Melgund.....F x
 Maskawata.....G s
 Monteith.....H v
 Marney.....H m
 Moline.....J o
 Minnewawa.....K v
 MINNEDOSA, M.&
 N.W. Ry. Junction.L n
 Medora.....E z
 Minniska.....C h
 Murchison.....M m
 Millford.....N u
 Montrose.....O r
 Moropano.....P y
 Midway.....Q n
 Mekiwin.....Q o
 Melbourne, C.P.R.....Q s
 Maringhurst.....R z
 Mowbray.....V b¹
 MANITOU, C.P.R.
 branch.....U z
 Musselborough.....V x
 Macdonald.....V q
 Mountain City.....X a¹
 Miami.....X x
 Minnewakan.....X j
 MORDEN, C.P.R.
 branch.....Y z
 Maryland.....Z u

USE JOHNSTON'S FLUID BEEF
 The Great Strength Giver.

8 MANITOBA ADVERTISEMENTS.

ALLOWAY & CHAMPION,
Bankers and Brokers.

Scrip,

Bonds,

Stocks

BOUGHT AND SOLD.

DO NOT PAY CASH

For GOVERNMENT, C.P.R., or C.N.W. Co. LANDS,
A large saving can be made by paying in Scrip,
Bonds or Stock, through us.

WRITE FOR PARTICULARS. FARMERS' NOTES DISCOUNTED.

WINNIPEG AND PORTAGE LA PRAIRIE.

HOPE'S
Tent, Awning and Mattress
FACTORY.

HOPE & CO.
9 McWILLIAM ST. EAST,
WINNIPEG, MAN.

Marquette.....B¹ p
 Meadow Lea.....B¹ p
Meadows.....C¹ q
Morris, C.P.R. and
 N.P.&M.....D¹ x
 Middlechurch.....G¹ q
 Millbrook.....I¹ s
McGregor, C.P.R.....T r
MILLWOOD, M.&
 N.W. Ry.....A i

N.

Napinka.....E¹ y
 Ninga.....L a¹
 Ninette.....N x
NEEPAWA, M.&
 N.W.....O n
 Norquay.....T w
 New Haven.....V y
NEWDALE, M.&
 N.W.....J m
NIVERVILLE, C.P.
 R. branch.....F¹ v
NORBERT, ST.,
 N.P.&M.....F¹ t
 Nelson.....X z

O.

Orwold.....E n
OAK LAKE, C.P.R. F t
 Oakburn.....G k
Oak River, G.N.W.C.H o
 Osprey.....O p
 Oberon.....O p
 Orange Ridge.....P m
 Otenaw.....Q x
 Olive.....T u
 Oakland.....W p
 Opawaka.....W y
 Ossowo.....Z p
 Oak Point.....Z k
Osborne, C.P.R. br...D¹ v

Otterburn, C.P.R. br.F¹ w
 Oak bank.....H¹ r

P.

Peguis.....H n
 Parkisimo.....C p
 Pipestone.....D v
 Penrith.....E q
 Pendennis.....I q
 Petrel.....P r
PILOT MOUND,
 C.P.R. branch.....S z
 Pomeroy.....Z x
POPLAR POINT,
 C.P.R.....Z p
 Pigeon Lake.....B¹ r
 Pleasant Home.....E¹ l
 Pic, St.....E¹ at
Parkdale, C.P.R. br..G¹ q
 Prairie Grove.....G¹ s
 Plympton.....H¹ s
PORTAGE LA
PRAIRIE, C.P.R.
 and M.&N.W.....W q
PLUM COULIE,
 C.P.R. branch.....A¹ z

R.

RUSSELL, M.&
 N.W.....B h
 Rossburn.....E j
 Ralphton.....F q
 Roden.....H r
 Riding Mount'n House.I k
 Roseland.....J t
 Ravensglen.....J n
 Raven Lake.....G m
 Rayfield.....K z
 Rowland.....L y
 Roundthwaite.....L u
 Roseberry.....P z
 Richmond.....R m
 Ruttanville.....T at

USE JOHNSTON'S FLUID BEEF
 The Great Strength Giver.

Manitoba Hotels.

THE CLARENDON HOTEL,
WINNIPEG.

The Building cost \$140,000 ; solid Brick and Fire-
Proof with Vaults, Elevators, Steam
Heated throughout.

SPACIOUS DINING HALL.

Sample Room with Plate-Glass Front.

Terms, ranging from \$1.50 to \$3.50 per day.

BENNETT & CO., Props.

Late of the New Douglas House.

LANGHAM HOTEL
BRANDON.

Situated on 12th St. Newly furnished and fitted
throughout. Every room heated by steam;
Hot and Cold baths.

SAMPLE ROOMS FOR COMMERCIAL TRAVELLERS.

FREE 'BUS MEETS ALL TRAINS.

The Langham is the most comfortable hotel west of Winnipeg
Charges moderate.

J. W. NEALON,

Prop.

A. W. LEFLAR,

Mgr.

WESTERN HOTEL
CARBERRY.

Always First-class in every respect. Large addi-
tion just completed; newly furnished.

LARGE SAMPLE ROOMS AND BILLIARD ROOM.

LIVERY IN CONNECTION.

THOS. HUCKELL, Prop.

Roseisle.....W w
 Rhineland.....Z b¹
Reaburn, C.P.R.....A¹ p
 ROSENFELD, C.P.
 R. br. Ry. Junct.....C¹ z
Rosser, C.P.R.....D¹ q
 Royal.....F¹ u
 Ridgeville.....G¹ b¹
 Riehländ.....J¹ s
 RAPID CITYS.&W.J p
Rathwell, C.P.R. br. V u

S.

Shellmouth.....A g
 Silver Creek.....C i
Silver Plain, N.P.&M.E¹ w
 Seamo.....Z j
 Suthwin.....G¹ r
 Sourisford.....C a u
 Seeburn.....D j
 Snake Creek.....D i
Solsgrith, M.&N.W.. E 1
 SHOALLAKE, M.&
 N.W.....G l
 Strathclair P.O.....H l
 STRATHCLAIR,
 M.&N.W.....H m
 SOURIS (Plum Cre'k). I v
 Sheppardville.....J x
 Scandinavia.....M k
 Stratherne.....M u
 SOURIS CITY.....M v
Sewell, C.P.R.....N r
 STOCKTON.....O w
 Salisbury.....P n
 Sittaka.....Q v
Sidney, C.P.R.....R r
 Silver Spring.....T z
 Swan Lake.....T x
 Somerset.....U x
 Snowflake.....U b¹
 Shadeland.....X a¹
 Stephenfield.....X w

Stodderville.....Y a¹
 Schanzenfelt.....Z a¹
 Saltville.....Z w
 STARBUCK, C.P.R.
 branch.....B¹ t
 Strathewen.....C¹ o
 STONEWALL, C.P.
 R. branch.....D¹ p
 STONY MOUNTAIN
 TALV, C.P.R. br..E¹ p
 SPRINGFIELD.....G¹ r
 SHELL RIVER.....B h
 SUNNYSIDE.....H¹ s
 SELKIRK EAST,
 C.P.R.....H¹ p
 SELKIRK WEST,
 C.P.R. branch.....H¹ o
 Steinbach.....I¹ w
 Stuartburn.....I¹ a¹
 St. Alphonse.....R x
 St. Leon.....U x
 St. Laurent.....Z l
 St. François Xavier...C¹ r
 St. Jean Baptiste.....D¹ z
 St. Charles.....E¹ s
 ST. AGATHE, N.P.
 &M.....E¹ r
 ST. NORBERT, N.P.
 &M.....F¹ t
 St. Vital.....F¹ s
 ST. BONIFACE,
 C.P.R.....F¹ r
St. James, C.P.R. br. F¹ r
 St. Anne.....I¹ u
 St. Andrews.....H¹ q
 ST. JEAN, N.P.&M.D z

T.

Tumbell.....B d
 Toddburn.....E k
 Turtle Mountain.....I z
 Totonka.....I o
 Two Rivers.....N u

USE JOHNSTON'S FLUID BEEF
 The Great Strength Giver.

R. J. WHITLA & CO.,

WHOLESALE

Dry : Goods : Importers,

COR.

MCDONALD & ALBERT STS.,

WINNIPEG.

<i>TRÉHERNE</i> , C.P. R. branch.....T u	West Lynn.....E ^l b ^l Wavy Bank.....E ^l o
<i>THORNEHILL</i> , C. P.R. branch.....X z	Woonona.....B ^l o WOODLANDS.....B ^l o
<i>Tyndall</i> , C.P.R.....I ^l p	Warrington.....Z y
U.	<i>WESTBOURNE</i> , M.&N.W.....U p
Upton.....C j	<i>Woodside</i> , M.&N.W.....T o
V.	Wellington.....T p Wood Bay.....T y
<i>VIRDEN</i> , C.P.R....D s	Wellwood.....P q
Viola Dale.....G o	Wakopa.....L b ^l
<i>Victoria Park</i> , C.P.R. branch.....G ^l p	<i>WHITE WATER</i> , C.P.R. branch....I z
W.	Wapaha.....I y
<i>WINNIPEG</i>F ^l r	Wheatland.....H p
C.P.R., Main Line, E. and W., five branches; N.P. &M., two lines, and H. B. Ry.	Waneche.....H x West Hall.....H x Warleigh.....E m
<i>WEST SELKIRK</i> , C.P.R. branch.....H ^l o	Waskada.....D a ^l Wattsview.....C M Woodworth.....C t
	<i>WHITEMOUTH</i> , C.P.R.....O ^l r
	Wassewa.....J a ^l

DUNCAN S. MACINTYRE,
Hardware; and; Metal; Broker,
RAILWAY AND CONTRACTORS' SUPPLIES.

AGENT

ONTARIO ROLLING MILLS CO.,
HAMILTON, ONT.

154 ST. JAMES ST.,

Telephone No. 921 A. }
 P. O. Box 1235.

MONTREAL.

100. Bralmites.

**THE
Calgary & Medicine Hat Land Co.**

(LIMITED).

The following list of

MANITOBA LANDS

Are all advantageously situated in the thriving
Counties of

BRANDON AND DENNIS,

On the main line of the Canadian Pacific Railway,
and distant only two to five miles from

PROSPEROUS GRAIN CENTRES.

Section 13,	Township 10,	Range 21,	
" 33,	" "	9,	" 22,
" 13,	" "	10,	" 22,
" 21,	" "	9,	" 23,
" 21,	" "	9,	" 24,
" 33,	" "	9,	" 25,
" 33,	" "	10,	" 26.

For particulars regarding quality of land apply to

J. H. BROWNLEE,
BRANDON.

For prices, terms, &c., apply to

P. S. STEVENSON,
13 JOHN ST., MONTREAL.

and Co.
 IDS
 ving
 NIS,
 ilway,
 RES.
 ly to
 DON.
 NTREAL.

INDEX TO MUNICIPALITIES IN MANITOBA.

Municipality	Location of Municipality on Map.	County.	Clerks and Treasurers, with P. O. Addresses.	Reeves and Mayors.
Argyle.....	Q x	Rock Lake.....	W. Stack, Ck-Tr.....	Peter Strange.....
Archie.....	B o	Shoal Lake.....	H. Chipperfield, Ck; Hy. Aycard, Tr; Declan	John Longueur.....
Arthur.....	B a'	Souris River.....	W. F. Thomas, Ck-Tr.....	John Campbell.....
Assiniboia.....	E' r	Selkirk.....	Frank Ness, Ck-Tr.....	St. Charles J. Williams.....
Brandon City.....	K s	Brandon.....	Ino. Kerr, Ck; D. M. McMillan, Tr; Brandon	A. C. Fraser.....
Belcourt.....	Z t	Marquette.....	T. H. Brown, Ck-Tr.....	Poplar Point J. A. Ross.....
Blanchard.....	I o	Minnedosa.....	J. H. Stewart, Ck; Wm. Miller, Tr; Oak River	James W. Lloyd.....
Boulton.....	E f	Russel.....	Edwin Armstrong, Ck-Tr.....	Assessipi
Birtle.....	D l	Shoal Lake.....	Alfred Merton, Ck-Tr.....	Birtle William Watt.....
Brenda.....	D m	Souris River.....	J. M. Lawrie, Ck-Tr.....	William Watt.....
Coventry.....	E x	Brandon.....	George R. Halse, Ck-Tr.....	Brandon Rev. G. Roddick; Brandon Hills
Carleton Place.....	E t	Dufferin.....	Joseph Lemay, Ck-Tr.....	St. Norbert Joseph Hamlin.....
Carleton Place.....	Y t	Minnedosa.....	C. F. Collins, Nelson; S. Umphrey, Miami	Benjamin Megill.....
Cypress North.....	M l	Norfolk.....	W. T. Bielby, Ck-Tr.....	Clanwilliam Andrew Cook.....
Cypress South.....	P r	Brandon.....	W. Collins, Sec-Tr.....	Carberry John A. Smith.....
Daly.....	P u	Brandon.....	F. T. Westwood, Ck-Tr; Pendennis,	James Davidson.....
DeSalaberry.....	G y	Carillon.....	L. M. P. Noel, Ck-Tr.....	Lothar Richard Graham.....
Derby.....	P a'	Rock Lake.....	F. D. Coates, Ck-Tr.....	Joys J. G. Labarrie.....
Deloraine.....	H a'	Turtle Mountain.....	James Rae, Ck-Tr.....	Cartwright A. C. Clark.....

Use JOHNSTON'S FLUID BEEF—The great Strength Giver.

16 MANITOBA ADVERTISEMENTS.

WILSON & SMYTH,
WHOLESALE
FURNITURE,
BRANDON, MAN.

Our Stock is the largest and best assorted in the
Province, and prices the lowest.

If you want to furnish, get our estimates.

Our Wholesale Price List sent to the trade on
application.

T. E. KELLY,
Livery, Feed and Sale Stables,
9th St., BRANDON, MAN.

Good horses and rigs. Special rates to Commercial men.
Open day and night. Telephone No. 45

THE BRANDON
Tent, Awning, Overall and Mattress
FACTORY.
EMERSON & McNEIL,
BRANDON, MAN.

Estimates given for Tent and Awning work on application.

INDEX TO MUNICIPALITIES IN MANITOBA—Continued.

Municipality.	Location of Municipality on Map.	County.	Clerks and Treasurers, with P. O. Addresses.	Reeves and Mayors.
Douglas.....	P 14	Manchester	F. Kiewer, Ck-Tr.	Peter Bergen..... Gretna
Dufferin North.....	A 1 x	Dufferin.....	D. Campbell, Clerk, Campbellville; J. H. Haverson, Treasurer, Carman	Robert McDonald..... Lovestoff Shadland
Dufferin South.....	W 14	Dufferin.....	Wm. Connor, Ck-Tr.	Alfred Peterson..... Douglas
Elton.....	L 14	Manchester	M. G. Alvey, Ck-Tr.	Chatter T. J. Peuland..... Emerson
Emerson, town.....	E 14	Manchester	J. C. Phillip, Ck-Tr.	Emerson C. H. McFaiden..... Emerson
Elm River.....	X u	Port la Prairie	T. C. Forles, Clerk, Brantton; J. W. Bridge	Carman Nor. Morrison..... Almasippi
Ellice.....	B m	Shoal Lake	J. C. Williamson, Ck-Tr.	George Wilson..... Beaver Rapids
Fairford.....	V 5	Fairford	Not organized.	
Franklin.....	I 1	Manchester	Thomas Coulter, Ck-Tr.	Dom. City J. A. Lang..... Dominion City
Glenwood.....	L u	Brandon	J. Dolmage, Ck-Tr.	Souris William Smith..... Souris
Glenvale.....	N P	Beaufort Plain	R. Dunsmore, Sec-Tr.	Bridge Creek James Holland..... Glendale
Gimli.....	E 1	Gimli	G. Thorsteinsson, Ck-Tr.	Gimli Job. Magnusson..... Arnes
Gladstone, town.....	S o	Westbourne	G. Claxton, Receiver	Gladstone No Council.....
Hanover.....	H w	Carillon	Cornelius Epp.	Chortitz Peter Tows..... Chortitz
Hespeler.....	H v	La Verandrye	Cornelius Epp, Ck-Tr.	Chortitz Peter Tows..... Chortitz
Harrison.....	J 1	Minnedosa	Albert R. Fanning, Ck-Tr.	Newdale E. McGill..... Passwood
Inchiquin.....	E x	Souris River	Not organized.	
Kildonan.....	E 1	Saskatoon	J. F. Nutroo, Ck-Tr.	Box 418, Winnipeg William Fraser..... Kildonan
La Broquerie.....	O w	Carillon	J. F. Nutroo, Ck-Tr.	LaBroquerie P. A. St. Laurent..... LaBroquerie
Lansdowne.....	Q k	Beaufort Plains	M. E. Doughton, Sec-Tr.	Arden Station K. A. Vanhulst..... Orange Rg

Use JOHNSTON'S FLUID BEEF—The great Strength Giver.

18 MONTREAL ADVERTISEMENTS.

Benny, Macpherson & Co.

WHOLESALE

Hardware

& Merchants

IMPORTERS OF

Builders' Hardware and Joiners' Tools, House
Furnishings, Cutlery and Plated Ware,
Guns, Rifles, Revolvers, Ammu-
nition, Game Traps and

ALL KINDS OF SPORTING GOODS.

Bar, Band, Hoop and Sheet Iron, Swedes and
Norway Iron, Steel, Tin Plates, Wire,
Galvanized Sheets, Zinc, Cut Nails,
Horse Nails, Horse Shoes,
and a complete
stock of

SHELF AND HEAVY HARDWARE.

—ALSO—

Railway Supplies of Every Description, viz:
Shovels, Picks, Crowbars, Wheelbarrows, Scrapers,
Steel Hammers, Handles, &c., &c.

388-390-392 ST. PAUL ST.,
MONTREAL.

Co.

nts

House
re,

OODS.

des and
ire,

ARE.

viz:
crapers,

ST.,

INDEX TO MUNICIPALITIES IN MANITOBA—Continued.

Municipality.	Location of Municipality on Map.	County.	Clerks and Treasurers, with P.O. Addresses.	Reeves and Mayors.
Lorne	T x S a 1	Rock Lake	George Crawford, Ck-Tr. M. Young, Clerk, Manitou	R. G. O'Malley.....Sumerset
Louise	E 1 u	Rock Lake	R. Rollins, Treasurer, Crystal City	W. H. Greenway.....Crystal City
Macdonald	F a 1	D'Iberville	A. Wilson, Donmore; J. Bureau, Winnipeg	W. Parker.....Elythefield
Medora	L n	Souris River	W. R. David, Ck-Tr.	Lemox E. Attidge.....Waskata
Minnedosa, town	E o	Minnedosa	W. Howard, Clerk, Arrow River;	Minnedosa No Council
Minota		Shoal Lake	W. D. Paynter, Treasurer, Beulah	William Taylor.....Parkisiro
Morris	C x	Morris	D. M. Ure, Ck-Tr.	William Taylor.....Parkisiro
Morris, town	D 1 v	Morris	Morris	J. S. Campbell.....Morris
Montclair	E 1 v	Morris	Morris	No Council
Neepawa, town	O n	Beautiful Plains	Joseph Haril, Ck-Tr. W. Currie, Sec-Tr.	St. Jean Baptiste Adolph Fortier.....St. Pie
Nelson, town	X z	Dufferin	Neepawa E. R. Hamilton	Neepawa
Norfolk North	T r	Norfolk	T. R. Varden, Sec-Tr.	Nelson No Council
Norfolk South	T u	Norfolk	W. S. Moody, Ck-Tr.	McGregor
Oakland	L v	Brandon	M. G. Gordon, Treasurer, Holburn	McGregor
Oak River	F o	Shoal Lake	W. S. Moody, Ck-Tr.	Holliday R. J. W.....St. Olive
Odsanah	M o	Minnedosa	Joseph Andrews, Ck-Tr.	Ronndthwaite E. J. James Nichol.....St. John's City
Osprey	Q p	Beautiful Plains	John Cumming, Ck-Tr.	Minnedosa, John Forsyth.....Minnedosa
Pipestone	B u	Dennis	J. W. Drysdale, Ck-Tr.	Minnedosa, Samuel E. Barr.....Neepawa
Posen	Z i	Fairford	A. P. Power, Clerk, Virden; Benson Peters, Treasurer, Elma Valley	John McKinnon.....Pipestone
			Tom Seamon, Sec-Tr.	John Todd.....Seamo

Use JOHNSTON'S FLUID BEEF—The great Strength Giver.

A
MAP OR PLAN

Of your Municipality or Town accompanied by a letter press description of its advantages is one of the best means of advertising it to the world.

The Burland Lithographic Co.

MONTREAL,

Make a specialty of Map Work of every kind, whether engraved on stone or copper, or reproduced by Photo-lithography, or the admirable

WAX PROCESS.

Write for information and estimates.

THE BURLAND LITHOGRAPHIC CO.,
Engravers and Fine Color Printers,
MONTREAL.

INDEX TO MUNICIPALITIES IN MANITOBA—Continued.

Municipality.	Location of Municipality on Map.	County.	Clerks and Treasurers, with P. O. Addresses.	Reeves and Mayors.
Plessis	P l o	Plessis	Not organized	
Ptla Prar, town	X q 1	Port, la Prairie	R. C. Brown, Sec-Tr.	J. P. Young, Portage la Prairie
Port, la Prairie.	X q 1	Port, la Prairie	J. W. Jackson, Sec-Tr.	W. F. Smith, Portage la Prairie
Pt. Mound, town	S z	Rock Lake		
Rosedale	N j	Beautiful Plains	W. F. Young, Sec-Tr.	Robert Campbell, Bridge Creek
Rapid City, town	J p	Minnedosa	J. Rogerson, Ck-Tr.	R. J. Samp, J. Head
Rockwood	E m	Lisgar	F. Frankland, T. McFarlane	Rapid City
Rhineland	Z a 1	Dufferin	Wilhelm Kempel, Ck-Tr.	Reinwald, A. K. Mitchell
Riverside	L x	Turtle Mountain	William Gordon, Ck-Tr.	Rheinland
Riding Mount, tn	J f	Riding Mountain	Not organized	Henslip James Johnson
Rosburn	E i	Russell	John Brodie, Ck-Tr.	Alcester
Russell	E i	Russell	John Brown, Ck-Tr.	Thomas V. Rossburn
Sifters	E u	Dennis	Chk-Tr.	Alexander H. Callin
Saskatchewan	E s	Minnedosa		Robert Sutcliffe
Silver Creek	E s	Russell	M. Turriff, Ck-Tr.	Oak Lake
Selkirk W. town	G 1	Lisgar	Wm. McKay, Ck-Tr.	G. McGregor
Selkirk E. town	H 1	Lisgar	J. McDougall, Ck-Tr.	Silver Creek
Shoal Lake	G y	Shoal Lake	Charles C. Stewart, Ck-Tr.	W. S. Creagar
Sheel River.	B d	Selkirk	H. G. Chambers, Ck-Tr.	Selkirk F. W. Coleclough
Springfield	J r	Selkirk	W. S. Wallace, Ck-Tr.	East Selkirk
Strathclair	H 1	Minnedosa	W. Goodridge, Ck-Tr.	Sheel River
St. Anne	N t	La Verandrye	Stuart Creeke	Alexander Stewart
		La Verandrye	Eugene Parndt, Ck-Tr.	R. S. Conklin
				St. Anne
				Strathclair
				St. Anne

Use JOHNSTON'S FLUID BEEF—The great Strength Giver.

EDISON ELECTRIC LIGHT SYSTEM

Sprague Electric Motors.

REPORT JANUARY 1st, 1889.

Two Thousand (2,000) Isolated Plants in successful operation.

Two Hundred and Fifty (250) Central Station Plants installed.

More than One Million, Five Hundred Thousand (1,500,000) Edison Lamps in use.

Edison Patents cover entire system of Incandescent Lighting.

The Edison System, the best for all Incandescent Lighting, both Street and Interior.

Plants for Hotels, Theatres, Public Buildings, Asylums, Hospitals, Banks, Office Buildings, Cotton and Woolen Mills, Distilleries, Oil and Sugar Refineries, Paper Mills, Central Stations for Towns and Villages. Arc and Gas Light Companies have special opportunities for investing in Incandescent Lighting on large dividend paying basis, with the Edison Incandescent System.

GUARANTEE.—Twelve Sixteen Candle Power Lamps to the Mechanical Horse Power. Highest efficiency, durability, best mechanical construction, economy of power, perfect regulation, longest life of lamps, steadiness of lights and lowest cost in operation. Estimates promptly furnished for isolated Plants and Central Stations.

Sales and Supply Department:

M. D. BARR & CO., GENERAL SELLING AGENTS,

726 CRAIG ST., MONTREAL.

TEM

39.
ts in suc-
al Station
ed Thou-
Of Incan-
ncandes-
Buildings,
Buildings,
Oil and
Stations
as Light
or invest-
dividend
ndescent
le Power
High-
ical con-
gulation,
ghts and
promptly
Stations.
AGENTS,

INDEX TO MUNICIPALITIES IN MANITOBA—Continued.

Municipality.	Location of Municipality on Map.	County.	Clerks and Treasurers, with P.O. Addresses.	Reeves and Mayors.
St. Andrews	G h	Lisgar	J. McDougall, S. E. Smalley, Tr., St. Andrews	Thomas Norquay, St. Andrews
St. Boniface	G s	Town	E. R. Lloyd, Ck. Tr.	St. Boniface
St. Boniface	G s	Selkirk	P. F. Soney, Ck.; Ed. Lloyd, Tr., St. Boniface	Tredenn, St. Boniface
St. Clement	J s	Lisgar	W. R. Young, Ck.; J. Gunn, Tr.	R. Marion, St. Boniface
St. Fr. Xavier	J s	Marquette	P. Lavallee, Ck.; Tr.	Conor Robert Hay, St. Andrews
St. Laurent	A m	Fairford	M. Dunklee, Ck.; A. McLeod, Tr., St. Laurent	C. A. Thibier, St. Fr. Xavier
St. Norbert	E t	Dufferin	G. T. Landry, Ck.; Tr.	Royal Joseph Kiel, St. Laurent
St. Paul	H q	Selkirk	W. J. Lagimodiere, Ck.; Tr.	Lorette Agenor Dubac, Middle Church
Taché	H v	Varenes	J. R. Sturt, Ck.; Tr.	Alciphal K. Monteith, Killarney
Turtle Mountain	L v	Turtle Mountain	A. G. Hammett	
Varenes	O v	Dennis	J. A. McFarlane, Ck.; A. Austin, Tr., Varden	J. F. Frame, Varden
Wallace	C t	Westbourne	Ino Mason, Ck.; T. W. Horton, Tr., Gladstone	A. E. Smalley, Westbourne
Westbourne	T l	Town	W. W. Urwin, Ck.; Tr.	John Molloy, West Lynne
West Lynne	E l	City	C. J. Brown, Ck.; W. G. Scott, Tr.	John Thomas Ryan, Winnipeg
Winnipeg	E l	Brandon	George Armstrong, Ck.; Tr.	John Alexander Mihal, Winnipeg
Whitehead	J s	Turtle Mountain	Ed. Hammond, Ck.; Tr.	Sheppardville, Albert Henry, Wauneta
Whitewater	J s	Dennis	T. R. Todd, Clerk, Hillview;	
Woodworth	F r	Marquette	J. Parr, Treasurer, Broadwaine, W. J. Helliwell	Ralphton
Woodlands	E o	Morris	J. A. McFarlane, Ck.; J. Proctor, Tr., Woodlands	Charles Stewart, Meadowlea
Yauville	E s	Morris	Alfred Dazois, Clerk, Morris;	
			A. Bienbien, Treasurer, St. Jean Baptiste	Joseph Clement, Morris

Use JOHNSTON'S FLUID BEEF—The great Strength Giver.

SUN

Life Assurance Comp'ny
OF CANADA.
Head Office: St. James St. - - Montreal.

PRESIDENT:
THOMAS WORKMAN, Esq.
VICE-PRESIDENT:
HON. A. W. OGILVIE.
CHIEF MEDICAL OFFICER:
GEO. WILKINS, M.D., M.R.C.S., ENG.

ACTUARY:
T. B. MACAULAY.

MANAGING DIRECTOR:
R. MACAULAY.

THOS. GILROY, General Agent,
WINNIPEG, MAN.

PECK, BENNY & CO.

—MANUFACTURERS OF—

Horse Shoe Nails, Horse Shoes, Rail-
way and Ship Spikes,

IRON AND STEEL CUT NAILS

Patent Pressed and Clinch Nails, Cut Tacks
and Small Nails of every description,
also Wire Nails.

PROPRIETORS OF THE
CANADA ROLLING MILLS & HORSESHOE WORKS

THOMAS PECK. JAS. H. PECK.

OFFICE: LACHINE CANAL. WORKS: 391 ST. PAUL ST.

HOMESTEAD REGULATIONS.

All even numbered sections excepting 8 and 26 are open for homestead and pre-emption entry.

ENTRY.

Entry may be made personally at the local land office in which the land to be taken is situate or if the homesteader desires, he may, on application to the Minister of the Interior, Ottawa, or the Commissioner of Dominion Lands, Winnipeg, receive authority for some one near the local office to make the entry for him.

DUTIES.

Under the present law homestead duties may be performed in three ways :

1. Three years' cultivation and residence, during which period the settler may not be absent for more than six months in any one year without forfeiting the entry.
2. Residence for three years within two miles of the homestead quarter section and afterwards next prior to application for patent residing for 3 months in a habitable house erected upon it. Ten acres must be broken the first year after entry, 15 acres additional in the second, and 15 in the third year ; 10 acres to be in crop the second year, and 25 acres the third year.
3. A settler may reside anywhere for the first two years, in the first year breaking 5, in the second cropping said 5 and breaking additional 10, also building a habitable house. The entry is forfeited if residence is not commenced at the expiration of 2 years from date of entry. Thereafter the settler must reside upon and cultivate his homestead for at least six months in each year for three years.

APPLICATION FOR PATENT

may be made before the local agent, any homestead inspector, or the intelligence officer at Medicine Hat or Qu'Appelle station.

SIX MONTHS' NOTICE MUST BE GIVEN IN WRITING TO THE COMMISSIONER OF DOMINION LANDS BY A SETTLER OF HIS INTENTION PRIOR TO MAKING APPLICATION FOR PATENT.

INTELLIGENCE OFFICES are situate at Winnipeg, Qu'Appelle Station and Medicine Hat. Newly arrived immigrants will receive at any of these offices information as to the lands that are open for entry, and from the officers in charge, free of expense, advice and assistance in securing lands to suit them.

A SECOND HOMESTEAD.

may be taken by anyone who has received a homestead patent or a certificate of recommendation countersigned by the Commissioner of Dominion Lands upon application for patent made by him prior to the second day of June, 1887.

All communications having reference to lands under control of the Dominion Government, lying between the eastern boundary of Manitoba and the Pacific coast should be addressed to

H. H. SMITH,

Commissioner of Dominion Lands,

Winnipeg, Man.

CALL AT
HARRIS & CAMPBELL'S



FURNITURE WAREROOMS
WHEN IN OTTAWA,
AND SEE THEIR LINES OF
PARLOR, DINING & LIBRARY
FURNITURE.

BLOCK:
COR. QUEEN & O'CONNOR STS.

DEPARTMENT OF THE INTERIOR

DOMINION LANDS BRANCH.

Minister of the Interior—Hon. E. Dewdney.
 Minister's Private Secretary—Lyndwode Pereira.
 Deputy of the Minister of the Interior—A. M. Burgess.
 Secretary of the Department of the Interior—John R. Hall.
 Assistant Secretary—P. B. Douglas.
 Surveyor General—Edward Deville.
 Chief Clerk of the Patent Office—William M. Goodeve.
 Chief Clerk, Accountant—J. A. Pinard.

OUTSIDE SERVICE

Land Board. { Commissioner—H. H. Smith, Winnipeg.
 Supt. of Mines—Wm. Pearce, Calgary.
 Inspector of Agencies—J. M. Gordon, Winnipeg.
 Agt. Brit. Columbia—H. B. W. Aikman, New Westminster.
 Secretary of the Land Board—T. R. Burpe, Winnipeg.
 Assistant Secretary—R. A. Ruttan, Winnipeg.
 Accountant—E. H. Taylor, Winnipeg.

DOMINION LANDS OFFICES.

(Figures are inclusive.)

Winnipeg District—All surveyed e 1st Mer., West bndry, tp 1, east line r 1e, tp 2-3 Mer. line, tp 4, 5, 6 & 7, r 4w, tp north of & incl. 8 to r 8w; A. H. Whitcher, Winnipeg.

Dufferin District—tp 1, r 1e to 14w, tp 2, 3, r 1 to 14, tp 4, r 5 to 14w, tp 5, 6, 7 r 5 to 12w; George Young, Manitou.

Souris District—tp 2, r 13-r 8, tp 6, 7, r 13 to 2nd Mer, tp 8-12, r 9 to 2nd Mer; W. H. Hiam, Brandon.

Turtle Mountain District—tp 1-4, r 15 to 2nd Mer, tp 5, r 19 to 2nd Mer; John Flesher, Deloraine.

Little Saskatchewan District—tps north of and includ. 13, r 9 to 22 west; W. M. Hilliard, Minnedosa.

Birtle District—tps north of and including 13, r 23 to 2nd Mer.; W. G. Pentland, Birtle.

Land Companies other than Dominion Government.

C. P. R. and Man. S. W. Col. Ry. Co.

For full particulars as to prices, terms, etc., apply to L. A. HAMILTON, Land Commissioner, Winnipeg,

Or to any station agent of the C. P. R. Co., or Manitoba South Western Col. Ry. Co.

M. & Nor. W. R. Co.

A. F. EDEN, Land Commissioner. Offices: 622 Main St., Winnipeg.

Hudson's Bay Co.—208 Main St. See Advertisement.

Canada Nor'-West Land Co.—W. B. Scarth, Managing Director,
 624 Main street, Winnipeg.

Ontario & Qu'Appelle Land Co.—Osler, Hammond & Nanton, 396
 Main street.

28 MANITOBA ADVERTISEMENTS.

HENDERSON'S
POCKET GAZETTEER.

◆
SHIPPERS' & TRAVELLERS'
A B C GUIDE,
—FOR—
MANITOBA AND THE NORTHWEST.

◆
Express Offices,
Railway Stations,
Post Offices,
Money Order Offices,
Telegraph Offices,
Banking Towns,
Fares, Distances,
Connections and
Stage Routes.

◆
RAILWAY TIME SCHEDULES.

◆
PUBLISHED MONTHLY.

For Sale on all Trains and News Agents. At

IMPERIAL BANK OF CANADA.

CAPITAL (paid up)..... \$1,500,000.00
 RESERVE..... \$600,000.00

H. S. HOWLAND, President. T. R. MERRITT, Vice-President.

HEAD OFFICE, TORONTO..... D. R. WILKIE, Cashier

BRANCHES IN THE NORTH-WEST.

Winnipeg..... C. S. Hoare, Manager
 Brandon..... A. Jukes, "
 Calgary..... S. Barber, "
 Portage la Prairie..... N. G. Leslie, "

BRANCHES IN ONTARIO.

Essex Centre,	Niagara Falls,	Ingersoll,	St. Thomas,
Fergus,	Port Colborne,	Yonge St.	Welland,
Galt,	St. Catharines,	Toronto,	Woodstock.

Deposits received and interest allowed at current rates.

Drafts and letters of credit issued available in Canada, Great Britain, United States, France, China, India, Australia and New Zealand.

Municipal and other Debentures Purchased.

Agents in Great Britain—Lloyds Barnetts & Bosanquet's Bank (Limited), 72 Lombard St., London, England, and Branches.
 Correspondents—London & Southwestern Bank, Manchester & Liverpool District Banking Co. (Limited). E. W. Yates & Co., Liverpool.

C & W. PLAXTON

INVENTORS OF

P PLAXTON'S SECTIONAL HOT WATER BOILER.

Steam Fitters and Plumbers.

HOT WATER HEATING

A SPECIALTY.

88 FORT STREET, - - - WINNIPEG.

LOAN COMPANIES AND BROKERS.

Dominion of Canada Mortgage Co'y L'd. Money loaned on first mortgage real estate security. Debentures purchased. A few choice farms for sale on easy terms. WM. J. AKIN, Manager, 357 Main street, Winnipeg.

Western Canada Loan and Savings Co. Fixed and permanent capital (subscribed) \$2,500,000. Money to loan at lowest current rates. Favorable terms for repayment of principal. WALTER S. TEE, Managing Director, Toronto. W. M. FISHER, Winnipeg.

London & Canadian Loan and Agency Company, L'd. Capital subscribed, four million dollars. Money to lend on improved real estate. Municipal and school debentures purchased. G. J. MAULSON, Local Manager, Winnipeg.

The Trust and Loan Co. of Canada. Established 1851. Money advanced on security of improved farms. Interest 3 per cent. No commission. Expenses greatly reduced. Loans completed in Winnipeg. A. M. PATTON, Manager, Winnipeg.

Canada Permanent Loan and Savings Co. Incorporated 1955. Money advanced on real estate security. Mortgages and debentures bought. Some improved farms and city property for sale at low prices. CARRUTHERS & BROCK, 453 Main street, Winnipeg.

The Dundee Investment Company (Ld). Farm and city property (improved and unimproved) for sale on easy terms of payment. DRUMMOND BROS. & MOFFAT, Dundee Block, 398 Main St., Winnipeg.

Manitoba Mortgage and Investment Co. Ld. of London. Capital \$2,500,000. Chairman, Sir Ed. Stafford. Loans made at current rates on terms to suit borrowers. Mortgages and debentures purchased. Farm lands for sale. L. M. LEWIS.

Alloway & Champion, Bankers and brokers, 362 Main street, Winnipeg, transact a general banking business. Specialties: Purchase and sale of scrip, school debentures, railway and municipal bonds, stocks, and New York and Sterling Exchange.

W. T. MASON.

T. J. JONES.

MASON & JONES,

BOOK AND GENERAL JOB PRINTERS

(CITIZEN JOB DEPARTMENT)

48 & 50 QUEEN ST.,

- - - OTTAWA.

ERS.

loan and
ted 1955.
al estate
and de.
ome im-
property

BROCK,
peg.

ent Com-
and city
and unin-
sy terms
IMOND
Dundee
innipeg.

and In-
London.
hairman,
ns made
is to suit
and de-
rm lands
S.

a, Bank-
2 Main
nsact a
s. Spe-
sale of
es, rail-
s, stocks,
ling Ex-

JONES.

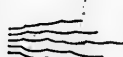
TERS

AWA.

A. W. Morris & Bro.

MONTREAL

ARE THE MANUFACTURERS OF THE
CELEBRATED

"RED CAP" 

BRAND OF MANILLA

 **Binder Twine**

THEY ALSO MAKE

JUTE  COTTON BAGS,

CORDAGE, Etc.

NORTH WEST AGENTS:

MERRICK, ANDERSON & CO.,

Winnipeg, Man.

AUTOMATIC REFRIGERATOR CO.

MANUFACTURERS OF

Hanrahan's Patent Refrigerator

SPECIALLY ADAPTED

FOR THE PRESERVATION OF

Fresh Meats, Fish, Milk, Butter

And other Perishable Articles.

*A thorough Circulation of Dry Cold Air.
No one Article will take Taste from another.
All are kept in the same Chamber.*



STOCK SIZES.

No. 00	35 x 37 x 18, Ash
No. 0	42 x 32 x 18, "
No. 1	48 x 34 x 21, "
No. 2	48 x 40 x 27, "
No. 3	72 x 54 x 30, "

*Special Sizes for Grocers, Butchers,
Hotels, etc., made to order.*

All doors in the above sizes are of wood,
unless otherwise ordered.

333-335 WELLINGTON ST., OTTAWA, CANADA.

JOHN BLACK, JR., Agent,

BRANDON, MANITOBA.



GOLDIE & McCULLOCH'S

GOLD MEDAL BANK BURGLAR PROOF
 * * * GOLD MEDAL FIRE P
 * * * GOLD I

AND ALL HIGHEST PRIZES WHEREV

ALFRED BEI
 293 ST. JAMES ST. M

See Catalogue, Prices, &c., at J. H. BROWN

SAFES

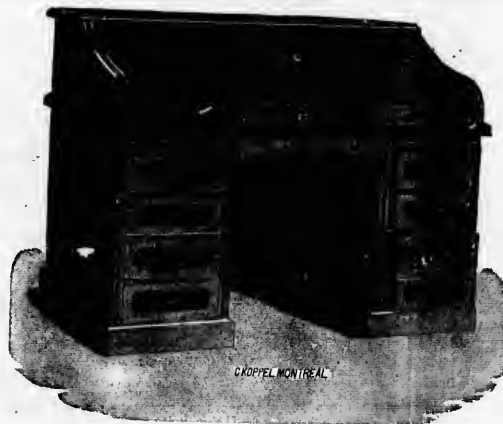
McCULLOCH'S ARE THE BEST!

ANK BURGLAR PROOF
GOLD MEDAL FIRE PROOF
GOLD MEDAL VAULT DOORS

HIGHEST PRIZES WHEREVER EXHIBITED.

ALFRED BENN,
S ST. MANAGER AT MONTREAL.

Prices, &c., at J. H. BROWNLEE'S Office, Brandon.



CROPPÉL MONTREAL

THE VANCOUVER ROLL TOP DESK.



LEGAL REVOLVING CASE.

TEES & CO. MONTREAL

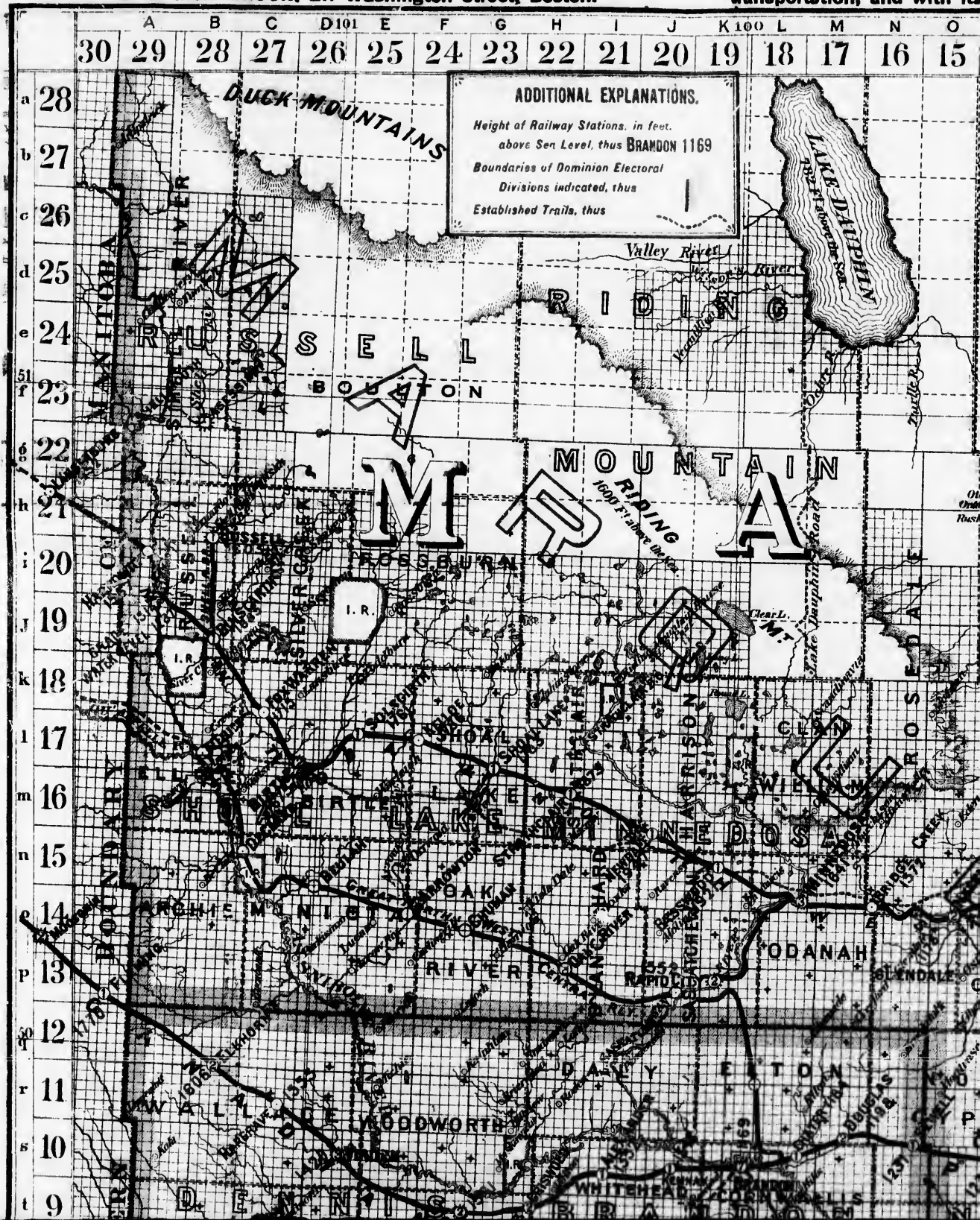
*See Sample of our Desk in J. H. BROWNLEE'S Office.
Send for Illustrated Catalogue.*

THE DESKMAKERS OF CANADA.

The following General Agents will cheerfully answer all applications for information as to rates, &c.:

W. R. CALLAWAY, 210 King Street West, Toronto.
A. B. CHAFFEE, Jr., 288 St. James Street, Montreal.
J. W. RYDER, St. Louis Hotel, Quebec.
E. V. SKINNER, 363 Broadway, New York.
C. E. McPHERSON, 211 Washington Street, Boston.

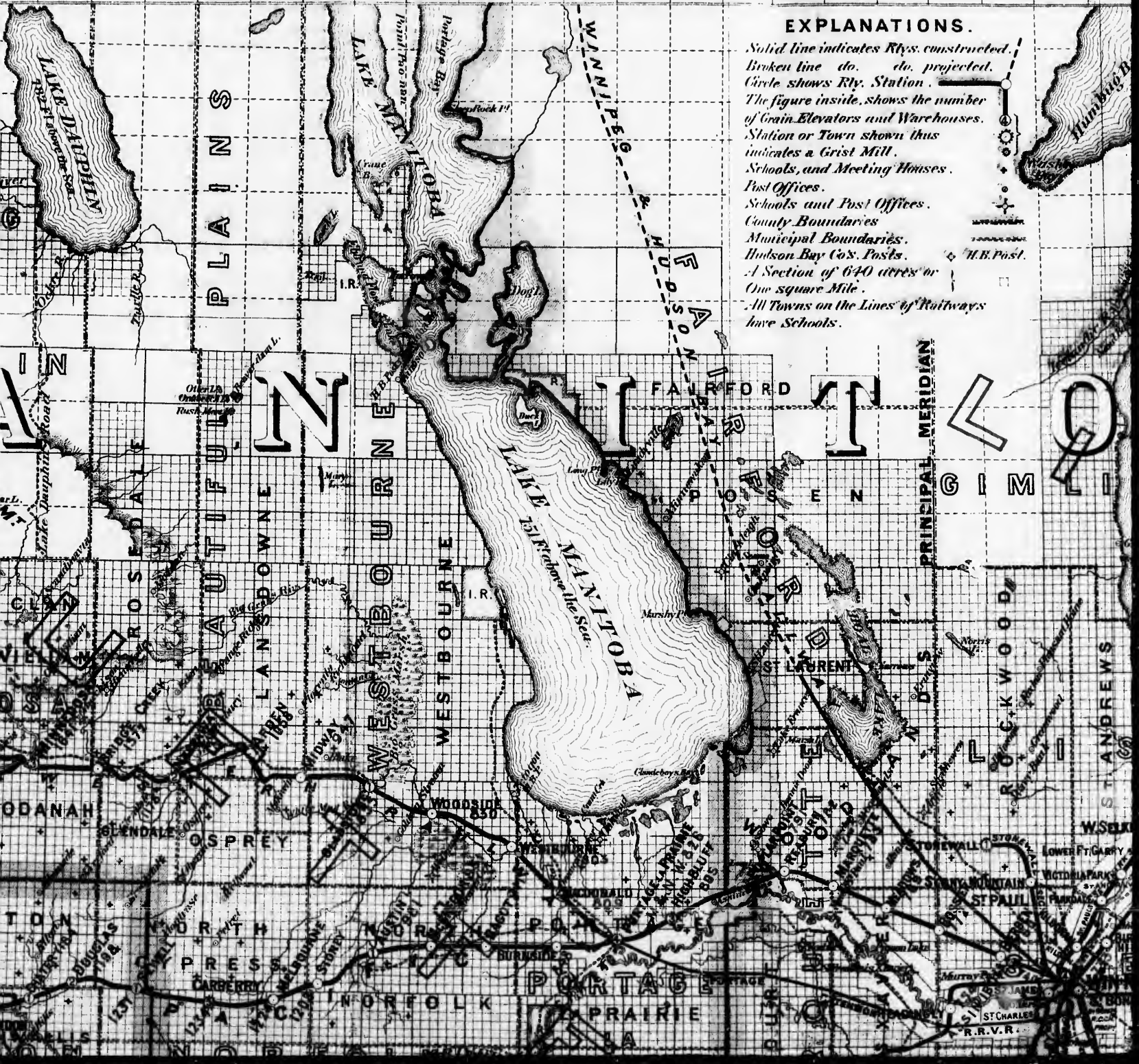
IS THE ONLY DIRECT
 transportation, and with its



THE CANADIAN PACIFIC RAILWAY

THE ONLY DIRECT ROUTE from all parts of EASTERN CANADA to MANITOBA, the NORTHWEST TERRITORIES and BRITISH COLUMBIA. Intending Settlers will find it for their interest to consult with Canadian Pacific Railway Agent, and with its Land Commissioner, L. A. HAMILTON, at Winnipeg, as to the selections of lands for settlement.

L	M	N	O	P	Q	R	S	T	U	V	W	X	Y	Z	A	B	C	D	E	F	G
18	17	16	15	14	13	12	11	10	9	8	7	6	5	4	3	2	1	1E	2E	3E	4E



EXPLANATIONS.

- Solid line indicates Rlys. constructed.
- Broken line do. do. projected.
- Circle shows Rly. Station.
- The figure inside, shows the number of Grain Elevators and Warehouses.
- Station or Town shown thus indicates a Grist Mill.
- Schools, and Meeting Houses.
- Post Offices.
- Schools and Post Offices.
- County Boundaries.
- Municipal Boundaries.
- Hudson Bay Co's. Posts.
- A Section of 640 acres or One square Mile.
- All Towns on the Lines of Railways have Schools.

LONGITUDE WEST FROM GREENWICH

PRINCIPAL MERIDIAN

PLAINS

Winnipeg

Brandon

Selkirk

Fairford

St. Laurent

Rockwood

St. Andrews

Winnipeg

ROSEDALE

BEAUFORT

LANDSDOWNE

WESTBOURNE

WESTBOURNE

WESTBOURNE

WESTBOURNE

WESTBOURNE

WESTBOURNE

WESTBOURNE

WESTBOURNE

WESTBOURNE

WESTBOURNE

WESTBOURNE

WESTBOURNE

WESTBOURNE

WESTBOURNE

WESTBOURNE

WESTBOURNE

WESTBOURNE

WESTBOURNE

WESTBOURNE

ODANAH

OSPREY

OSPREY

OSPREY

OSPREY

OSPREY

OSPREY

OSPREY

OSPREY

OSPREY

OSPREY

OSPREY

OSPREY

OSPREY

OSPREY

OSPREY

OSPREY

OSPREY

OSPREY

OSPREY

OSPREY

OSPREY

OSPREY

OSPREY

OSPREY

OSPREY

OSPREY

OSPREY

OSPREY

OSPREY

OSPREY

OSPREY

OSPREY

OSPREY

OSPREY

OSPREY

OSPREY

OSPREY

OSPREY

OSPREY

OSPREY

OSPREY

OSPREY

OSPREY

OSPREY

OSPREY

OSPREY

OSPREY

OSPREY

OSPREY

OSPREY

OSPREY

OSPREY

OSPREY

OSPREY

OSPREY

OSPREY

OSPREY

OSPREY

OSPREY

OSPREY

OSPREY

OSPREY

OSPREY

OSPREY

OSPREY

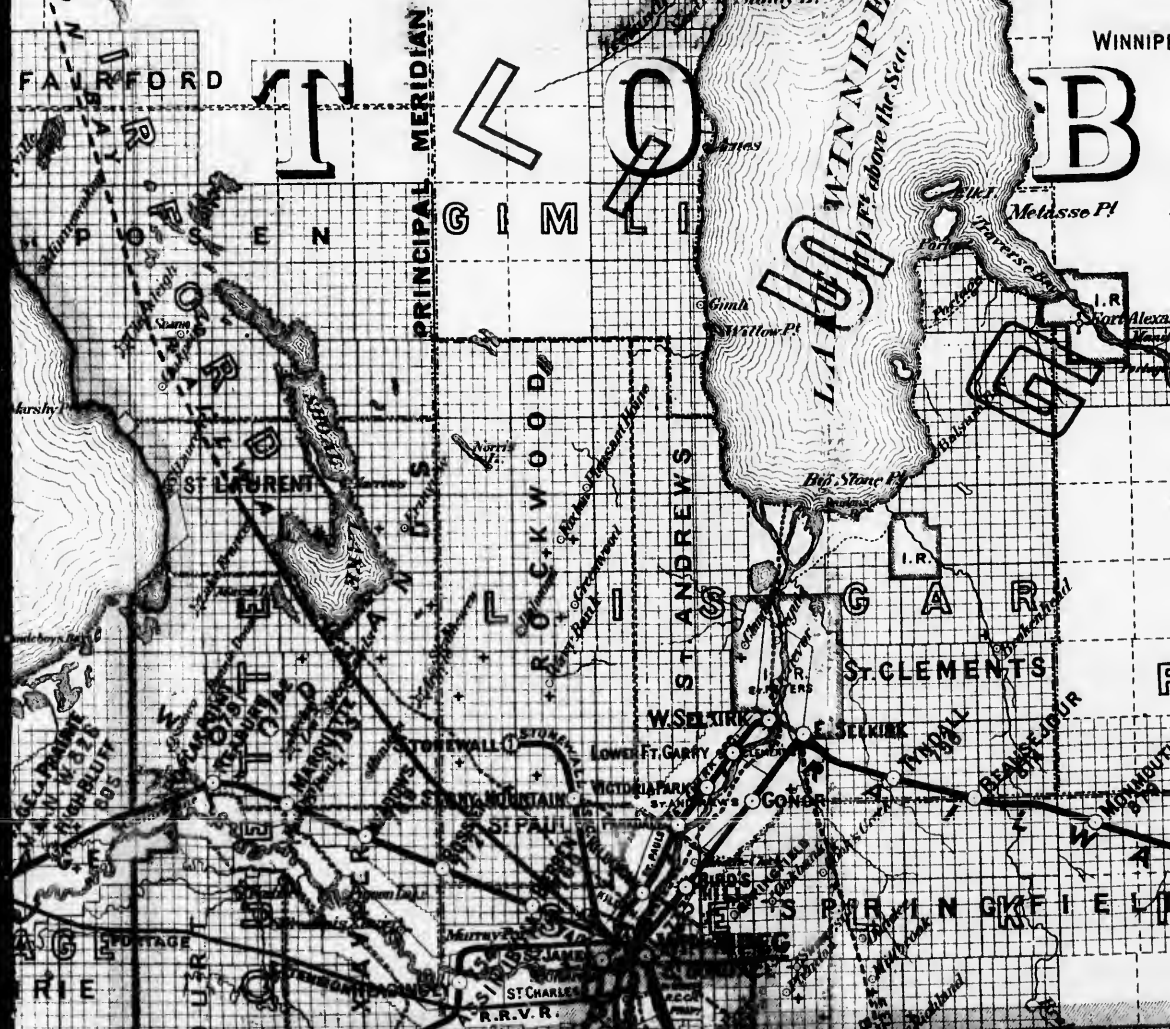
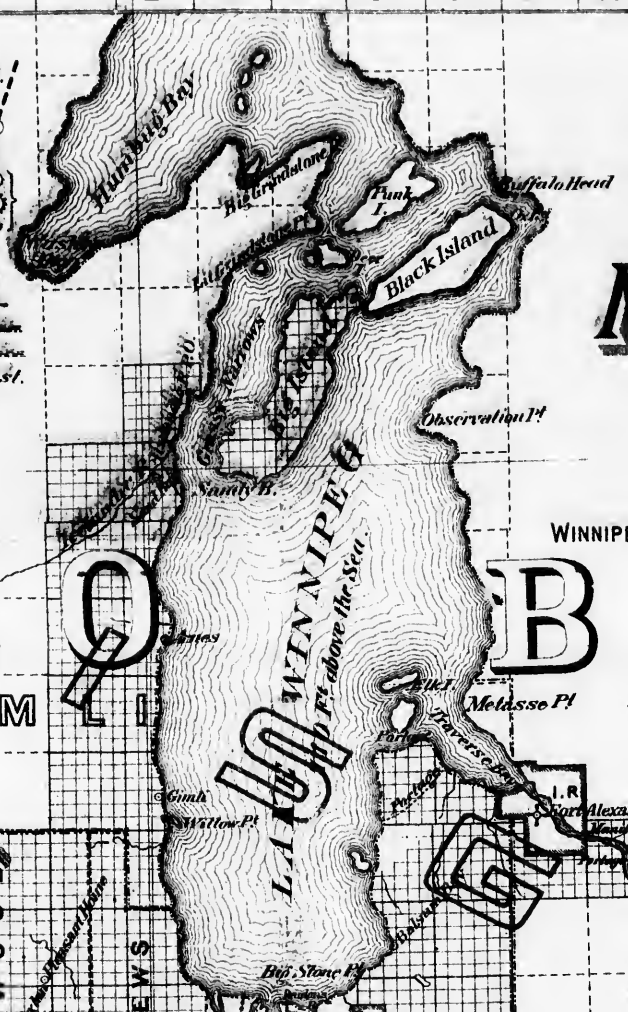
PACIFIC RAILWAY

MANITOBA, the NORTHWEST TERRITORIES and BRITISH COLUMBIA. Tourists or Interest to consult with Canadian Pacific Railway Agents concerning all matters of g, as to the selections of lands for settlement.

Y	90	Z	A	B	C	D	E	F	97	G	H	I	J	K	L	M
5	4	3	2	1	1 ^E	2 ^E	3 ^E	4 ^E	5 ^E	6 ^E	7 ^E	8 ^E	9 ^E	10		

EXPLANATIONS.

Solid line indicates Rlys. constructed.
 Broken line do. do. projected.
 Circle shows Rly. Station.
 The figure inside, shows the number of Grain Elevators and Warehouses.
 Station or Town shown thus indicates a Grist Mill.
 Schools, and Meeting Houses.
 Post Offices.
 Schools and Post Offices.
 County Boundaries
 Municipal Boundaries.
 Hudson Bay Co's. Posts.
 A Section of 640 acres or One square Mile.
 All Towns on the Lines of Railways have Schools.



The following General Agents will cheerfully answer all applications for information as to rates, &c.:

J. F. LEE, 232 Clark Street, Chicago.
 C. H. CAMPBELL, 471 Main Street, Winnipeg, Man.
 D. E. BROWN, Vancouver, B. C.
 ARCHER BAKER, 17 James Street, Liverpool, Eng.
 G. P. R. HEAD, OFFICES at Montreal, Canada.

IA. Tourists or
 g all matters of

J' K' L' M' 96N' O' P' Q' R' S' T' 95U'
 7E 8E 9E 10E 11E 12E 13E 14E 15E 16E 17E 18E

Brownlee's INDEXED RAILWAY & GUIDE MAP OF MANITOBA

PUBLISHED BY AUTHORITY OF THE
Provincial Government.

WINNIPEG, MARCH 1889.

McFinnay

A

Minister of Agriculture.

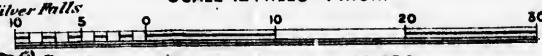
Compiled by

J.H. Brownlee, D.L.S.

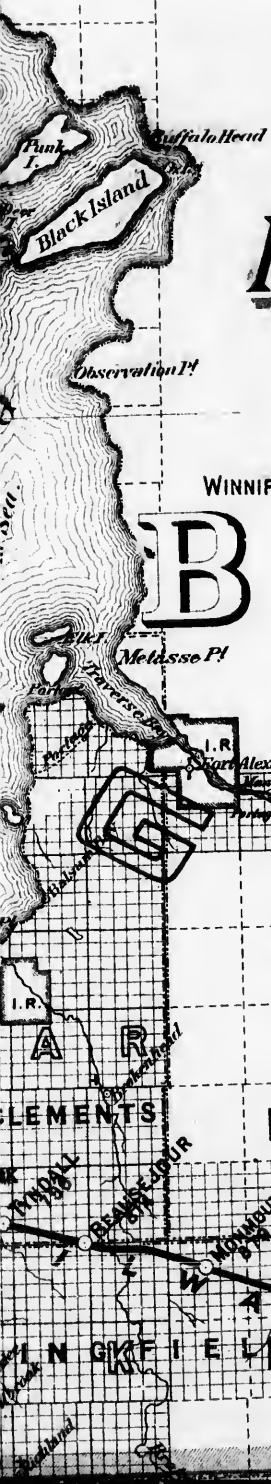
Surveyor and Map Publisher,

Brandon, Manitoba.

SCALE 1/2 MILES - 1 INCH.



NATURAL SCALE 1: 130,320.
 The Canada Bank Note Co. Lith. Montreal



28 a
 27 b
 26 c
 25 d
 24 e
 51
 23 f
 22 g
 21 h
 20 i
 19 J
 18 k
 17 l
 16 m
 15 n
 14 o
 13 P
 12 50
 q
 11 r
 10 s
 9

B

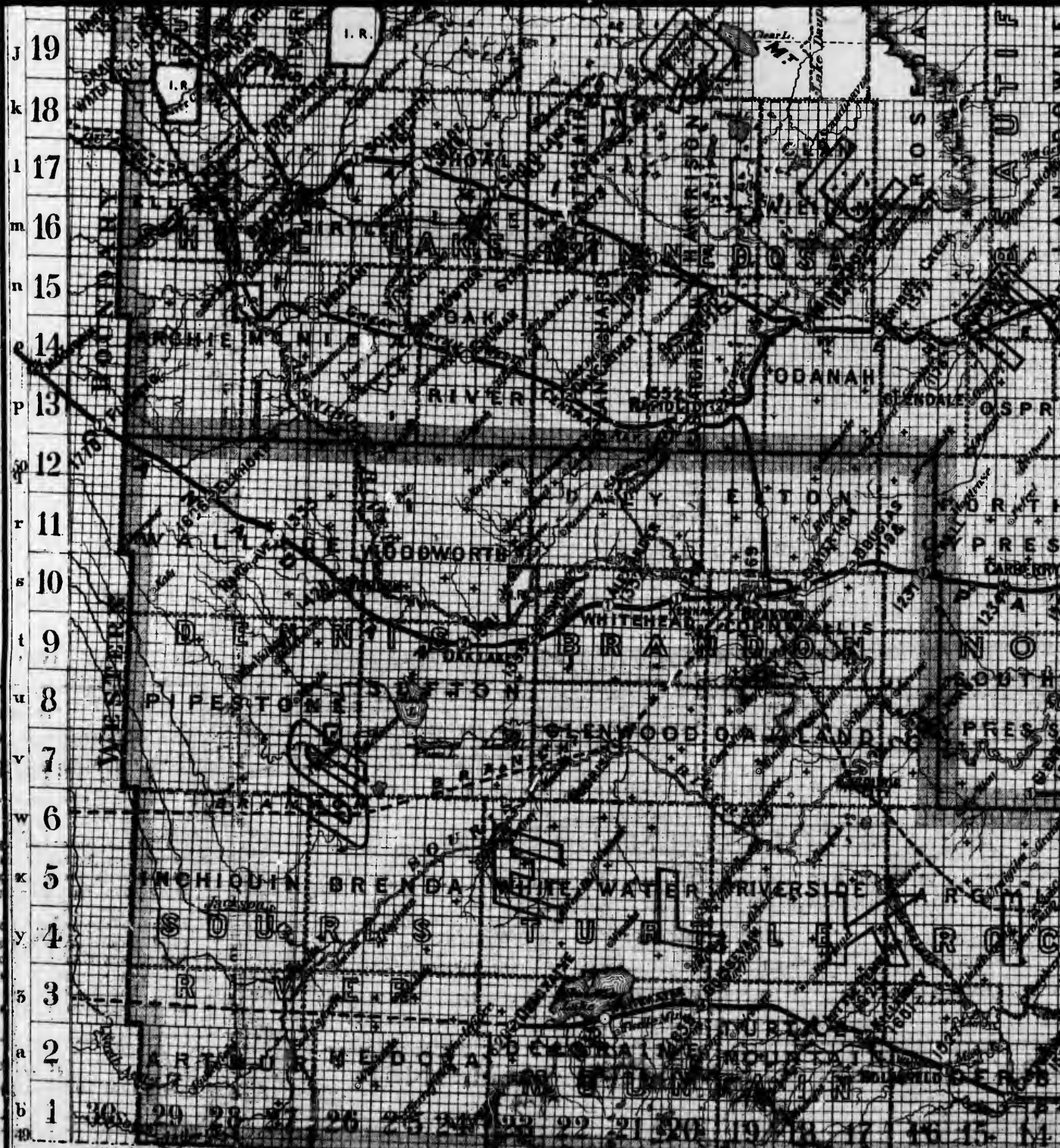


Plan of a Township,
 shewing numbers of Sections.

G

A

Winnipeg
 Brandon
 Varennes
 All Points East
 Lake



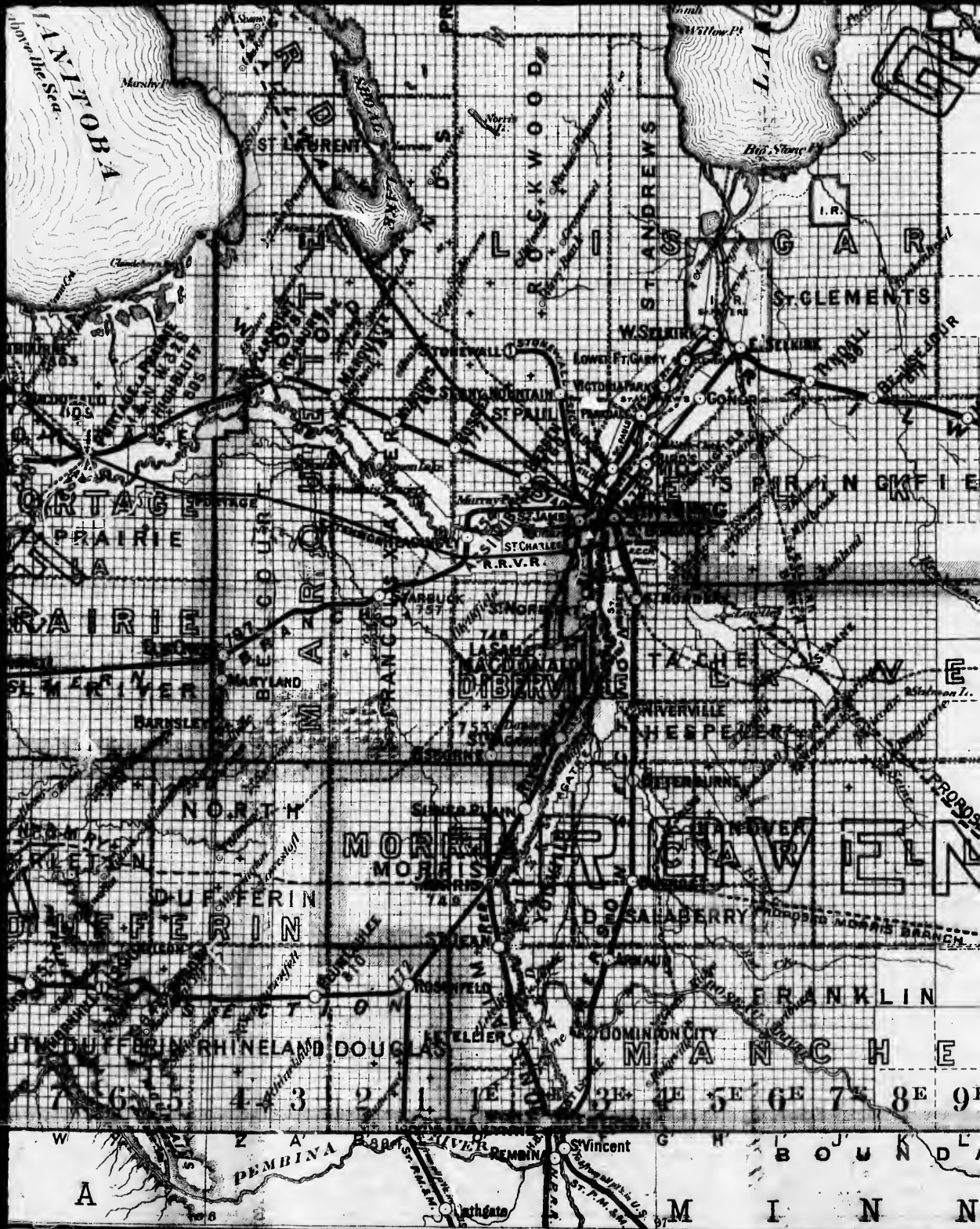
J 19
k 18
l 17
m 16
n 15
o 14
p 13
q 12
r 11
s 10
t 9
u 8
v 7
w 6
x 5
y 4
z 3
aa 2
ab 1

30 29 28 27 26 25 24 23 22 21 20 19 18 17 16 15 14

A B C D E F G H I J K L M N O P
INTERNATIONAL
TURTLE MOUNTAIN



Entered according to Act of Parliament of Canada, in the year 1889, by J. H. Brown, of the Department of Agriculture.



Map of the year 1889, by J. H. Brownlee, of the Department of Agriculture.

Brandon, Manitoba.

SCALE 12 MILES - 1 INCH.

NATURAL SCALE 1: 760,320.

The Canada Bank Note Co. Ltd. Lith. Montreal



18 k
 17 l
 16 m
 15 n
 14 o
 13 p
 12 50 q
 11 r
 10 s
 9 t
 8 u
 7 v
 6 w

6E 7E 8E 9E 10E 11E 12E 13E 14E 15E 16E

BOUNDARY OF P. Q. R. S.
 I N N E S S O T A

The

Dominion Illustrated

THE NATIONAL PICTORIAL WEEKLY
OF CANADA.

WITH the object of facilitating correspondence and securing the most interesting views in **MANITOBA AND THE NORTH WEST** for publication in the **DOMINION ILLUSTRATED**, we have appointed **J. H. BROWNLEE, OF BRANDON**, special agent for this work, to whom photographs and sketches should be submitted.

Our friends in the West can assist this enterprise very materially and help to develop and advertise their splendid country by communicating to Mr. Brownlee their ideas of the class of illustrations that will be of the greatest public interest.

The Dominion Illustrated Publishing Co.

G. E. DESBARATS, GENERAL MANAGER,
MONTREAL.

CANADA BANK

MONTREAL

ENGRAVERS AND

OF
BANK NOTES, BONDS & DEBENTURES
DRAFTS, MAPS, STATUES
SHOW CARDS

The Celebrated Photo-p

ARTOTY

Is exclusively owned in Canada

THE WITHIN MAP WAS ENGRAVED AND PRINTED IN THE A

BANK NOTE CO. LIM.

MONTREAL.

ERS AND PRINTERS

OF

S & DEBENTURES, STOCK CERTIFICATES,
MAPS, STATIONERY, LABELS,
SHOW CARDS.

Celebrated Photo-printing Process



ARTOTYPE 

owned in Canada by this Company.

ED AND PRINTED IN THE ATELIERS OF THE CANADA BANK NOTE CO.

LYMAN, KNOX & Co.

IMPORTERS AND

Wholesale 
Druggists 

374 & 376 St. Paul St., **MONTREAL.**

(CORRESPONDENCE SOLICITED.)

WHOLESALE AGENTS FOR

FIG SYRUP

IDEAL FELT TOOTH POLISHERS



4711 (BRAND) SOAP AND COLOGNE

CRAB-APPLE BLOSSOM PERFUME



RIO CHEMICAL CO., Etc., Etc.

LYMAN, KNOX & Co.

IMPORTERS AND

Wholesale Druggists

374 & 376 St. Paul St., **MONTREAL.**

(CORRESPONDENCE SOLICITED.)

WHOLESALE AGENTS FOR

FIG SYRUP



IDEAL FELT TOOTH POLISHERS

4711 (BRAND) SOAP AND COLOGNE



CRAB-APPLE BLOSSOM PERFUME

RIO CHEMICAL CO., Etc., Etc.

EDISON SYSTEM ELECTRIC

REPORT, JANUARY

Two Thousand (2000) Isolated Plants in success
Two Hundred and Fifty (250) Central Stations
More than One Million, Five Hundred Thousand
EDISON Patents cover entire system of Incandescence
The EDISON System, the best for all Incandescence
Plants for Hotels, Theatres, Public Buildings,
Cotton and Woolen Mills, Distilleries, Oil and Sugar
Towns and Villages. Arc and Gas Light Comparisons
Incandescence Lighting on large dividend-paying basis
GUARANTEE:—Twelve Sixteen Candle Power
Highest efficiency, durability, best mechanical construction,
longest life of lamps, steadiness of lights, and
furnished for Isolated Plants and Central Stations.



Canadian Agents for SPRAGUE ELECTRIC

SALE AND SUPPLY DEPARTMENT

M. D. BARR & CO., General Carriers
726 CRAIG STREET, MONTREAL

SYSTEM OF ELECTRIC LIGHTING

REPORT, JANUARY 1st, 1889.

100) Isolated Plants in successful operation.
Fifty (250) Central Station Plants Installed.
Million, Five Hundred Thousand (1,500,000) EDISON Lamps in use.
Over entire system of Incandescent Lighting.
In, the best for all Incandescent Lighting, both Street and Interior.
Theatres, Public Buildings, Asylums, Hospitals, Banks, Office Buildings,
Distilleries, Oil and Sugar Refineries, Paper Mills, Central Stations for
Arc and Gas Light Companies have special opportunities for investing in
on large dividend-paying basis, with the EDISON INCANDESCENT SYSTEM.
Twelve Sixteen Candle Power Lamps to the Mechanical Horse Power.
Stability, best mechanical construction, economy of power, perfect regula-
tion, steadiness of lights, and lowest cost in operation. Estimates promptly
for plants and Central Stations.

For SPRAGUE ELECTRIC MOTORS.

AND SUPPLY DEPARTMENT:

General Canadian Selling Agents,
110 KING STREET, MONTREAL.

COLORS

THE

WM. JOHNSON CO.

(INCORPORATED)

MONTREAL

MANUFACTURERS OF

PAINTS AND COLORS

SPECIALTIES:

JOHNSON'S Superfine Coach and Car Colors

JOHNSON'S Pure Colors in Oil

JOHNSON'S Evergreen

JOHNSON'S French Permanent Green

JOHNSON'S Magnetic Iron Paints

JOHNSON'S Liquid Paints

JOHNSON'S Kalsomine

JOHNSON'S Decorators' Pure White Lead

The fact cannot be too forcibly impressed upon the minds of all users of paint, that good results can be produced only by the use of good materials. The main expense in painting is not in the cost of the paint, but in the cost of LABOR and OIL, and it requires more labor and more oil to apply inferior paint than to apply the best that can be obtained.

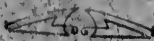
The above Brands are the acknowledged standard by which all other paints in the market may be judged.

LEAD

VARNISHES

* PAINTS *

MASSEY M'FG CO.



Harvesting : Machinery

—AND SHUTTLE—

COMPLETE OUTFITS.

BINDERS, RAKES, THRESHERS AND ENGINES	SEEDERS, MOWERS, PLOWS, HARROWS, WAGONS.	BUGGIES, CARTS, STRAW & WOOD BURNING STOVES, &c. &c.
--	---	---



Factory: Toronto, Ontario, Canada. Established 1847.

We have PERMANENT WAREHOUSES AND AGENTS at all leading centres in Manitoba and the Northwest. See our NEAREST AGENT or write to Winnipeg for Catalogue and Prices.

P.S.—All our Agents sell the goods imported by VANALLEN & AGUR.

SEE INSIDE OF FRONT COVER.

