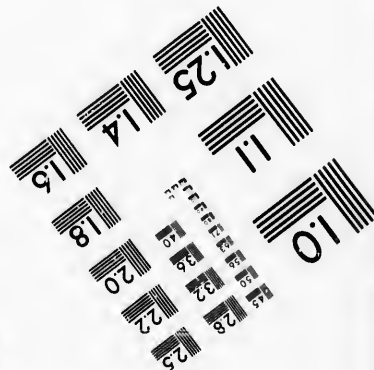
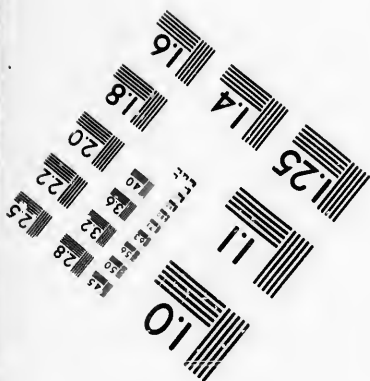
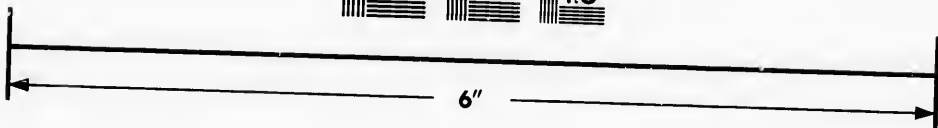
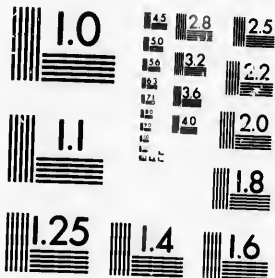


**IMAGE EVALUATION  
TEST TARGET (MT-3)**



**Photographic  
Sciences  
Corporation**

23 WEST MAIN STREET  
WEBSTER, N.Y. 14580  
(716) 872-4503

10  
12  
14  
16  
18  
20  
22  
24  
26  
28  
30  
32  
34  
36  
38  
40

**CIHM/ICMH  
Microfiche  
Series.**

**CIHM/ICMH  
Collection de  
microfiches.**



Canadian Institute for Historical Microreproductions / Institut canadien de microreproductions historiques

10  
12  
14  
16  
18  
20  
22  
24  
26  
28  
30  
32  
34  
36  
38  
40

**© 1987**

Technical and Bibliographic Notes/Notes techniques et bibliographiques

The Institute has attempted to obtain the best original copy available for filming. Features of this copy which may be bibliographically unique, which may alter any of the images in the reproduction, or which may significantly change the usual method of filming, are checked below.

L'Institut a microfilmé le meilleur exemplaire qu'il lui a été possible de se procurer. Les détails de cet exemplaire qui sont peut-être uniques du point de vue bibliographique, qui peuvent modifier une image reproduite, ou qui peuvent exiger une modification dans la méthode normale de filmage sont indiqués ci-dessous.

- |  |  |
|--|--|
| <input type="checkbox"/> Coloured covers/<br>Couverture de couleur   | <input checked="" type="checkbox"/> Coloured pages/<br>Pages de couleur  |
| <input type="checkbox"/> Covers damaged/<br>Couverture endommagée  | <input type="checkbox"/> Pages damaged/<br>Pages endommagées   |
| <input type="checkbox"/> Covers restored and/or laminated/<br>Couverture restaurée et/ou pelliculée  | <input type="checkbox"/> Pages restored and/or laminated/<br>Pages restaurées et/ou pelliculées  |
| <input type="checkbox"/> Cover title missing/<br>Le titre de couverture manque   | <input checked="" type="checkbox"/> Pages discoloured, stained or foxed/<br>Pages décolorées, tachetées ou piquées   |
| <input type="checkbox"/> Coloured maps/<br>Cartes géographiques en couleur   | <input type="checkbox"/> Pages detached/<br>Pages détachées  |
| <input type="checkbox"/> Coloured ink (i.e. other than blue or black)/<br>Encre de couleur (i.e. autre que bleue ou noire)   | <input checked="" type="checkbox"/> Showthrough/<br>Transparence   |
| <input type="checkbox"/> Coloured plates and/or illustrations/<br>Planches et/ou illustrations en couleur  | <input type="checkbox"/> Quality of print varies/<br>Qualité inégale de l'impression   |
| <input type="checkbox"/> Bound with other material/<br>Relié avec d'autres documents   | <input type="checkbox"/> Includes supplementary material/<br>Comprend du matériel supplémentaire   |
| <input type="checkbox"/> Tight binding may cause shadows or distortion<br>along interior margin.<br>La reliure serrée peut causer de l'ombre ou de la<br>distorsion le long de la marge intérieure   | <input type="checkbox"/> Only edition available/<br>Seule édition disponible   |
| <input type="checkbox"/> Blank leaves added during restoration may<br>appear within the text. Whenever possible, these<br>have been omitted from filming.<br>Il se peut que certaines pages blanches ajoutées<br>lors d'une restauration apparaissent dans le texte,<br>mais, lorsque cela était possible, ces pages n'ont<br>pas été filmées. | <input type="checkbox"/> Pages wholly or partially obscured by errata<br>slips, tissues, etc., have been refilmed to<br>ensure the best possible image/<br>Les pages totalement ou partiellement<br>obscurcies par un feuillet d'errata, une pelure,<br>etc., ont été filmées à nouveau de façon à<br>obtenir la meilleure image possible. |
| <input checked="" type="checkbox"/> Additional comments: [Printed ephemera] [3] p.<br>Commentaires supplémentaires:  |  |

This item is filmed at the reduction ratio checked below/  
Ce document est filmé au taux de réduction indiqué ci-dessous.

10X	14X	18X	22X	26X	30X
<input type="checkbox"/>	<input type="checkbox"/>	<input type="checkbox"/>	<input checked="" type="checkbox"/>	<input type="checkbox"/>	<input type="checkbox"/>
12X	16X	20X	24X	28X	32X

The copy filmed here has been reproduced thanks to the generosity of:

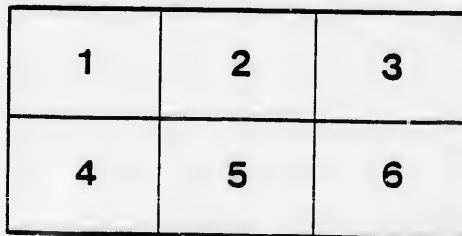
Musée du Château Ramezay,  
Montréal

The images appearing here are the best quality possible considering the condition and legibility of the original copy and in keeping with the filming contract specifications.

Original copies in printed paper covers are filmed beginning with the front cover and ending on the last page with a printed or illustrated impression, or the back cover when appropriate. All other original copies are filmed beginning on the first page with a printed or illustrated impression, and ending on the last page with a printed or illustrated impression.

The last recorded frame on each microfiche shall contain the symbol  $\rightarrow$  (meaning "CONTINUED"), or the symbol  $\nabla$  (meaning "END"), whichever applies.

Maps, plates, charts, etc., may be filmed at different reduction ratios. Those too large to be entirely included in one exposure are filmed beginning in the upper left hand corner, left to right and top to bottom, as many frames as required. The following diagrams illustrate the method:



L'exemplaire filmé fut reproduit grâce à la générosité de:

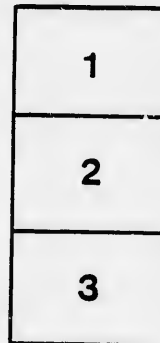
Musée du Château Ramezay,  
Montréal

Les images suivantes ont été reproduites avec le plus grand soin, compte tenu de la condition et de la netteté de l'exemplaire filmé, et en conformité avec les conditions du contrat de filmage.

Les exemplaires originaux dont la couverture en papier est imprimée sont filmés en commençant par le premier plat et en terminant soit par la dernière page qui comporte une empreinte d'impression ou d'illustration, soit par le second plat, selon le cas. Tous les autres exemplaires originaux sont filmés en commençant par la première page qui comporte une empreinte d'impression ou d'illustration et en terminant par la dernière page qui comporte une telle empreinte.

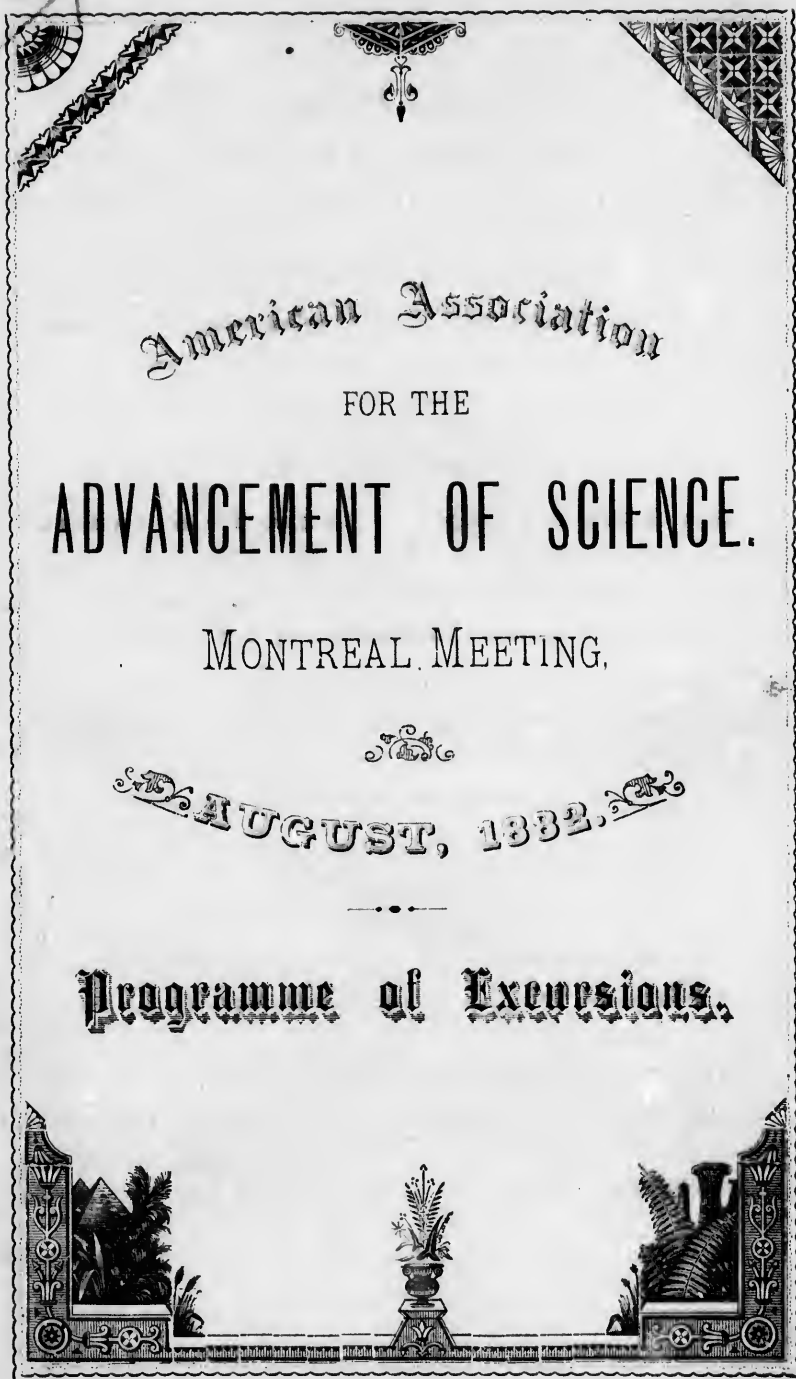
Un des symboles suivants apparaîtra sur la dernière image de chaque microfiche, selon le cas: le symbole  $\rightarrow$  signifie "A SUIVRE", le symbole  $\nabla$  signifie "FIN".

Les cartes, planches, tableaux, etc., peuvent être filmés à des taux de réduction différents. Lorsque le document est trop grand pour être reproduit en un seul cliché, il est filmé à partir de l'angle supérieur gauche, de gauche à droite, et de haut en bas, en prenant le nombre d'images nécessaire. Les diagrammes suivants illustrent la méthode.



*110A*

*6.39*



American Association

FOR THE

ADVANCEMENT OF SCIENCE.

MONTREAL MEETING.



AUGUST, 1882.

Programme of Excursions.

### EXCURSION TO LACHINE AND DOWN THE RAPIDS.

Persons desiring to make this trip may leave the Bonaventure Depot either at 7 a.m., 7.55 a.m., or at 5 p.m. on any week day from the 23rd to the 30th inst.

The ticket, with which each will be provided by application at the office in McGill College, must be given up on board the steamer at Lachine.

---

### EXCURSION TO QUEBEC.

Persons desiring to participate in this excursion will leave in the Str. *Canada*, of the Richelieu & Ontario Navigation Co., at the Jacques Cartier Wharf, on Friday, the 25th inst. at 7.45 p.m., *sharp*.

Breakfast will be provided on board after 7 a.m. on the following morning.

The return will be made by train leaving the Quebec depot of the North Shore Railway at 6.45 p.m., *sharp*, on Saturday.

Sleeping berths and tickets may be secured at the office.

---

### EXCURSION TO OTTAWA.

Persons desiring to participate in this excursion will leave the Mile End Station, of the Canadian Pacific Railway, on Saturday the 26th inst., at 7.30 a.m., *sharp*.

The return train will leave Ottawa at 6 p.m., *sharp*.

For the accomodation of a limited number who may wish to remain in the Capital for a longer time, the Canadian Pacific Railway Co. have kindly offered to make special provision by the ordinary train on Monday.

## EXCURSION TO NEWPORT.

Persons desiring to participate in this excursion will leave the Bonaventure Depot on Thursday, the 31st inst., at 8 a.m, sharp. The S. E. R. will entertain the excursionists at dinner at the Memphremagog House, Newport. The Steamer *Lady of the Lake* will then leave for a trip on the lake. The train will leave for Montreal at 6.30 p.m., *sharp*.

---

## EXCURSION TO HARBOUR, VICTORIA BRIDGE AND GRAND TRUNK WORKSHOPS.

The Harbour Commissioners steamer will leave the Island wharf at 2 p.m., *sharp*, reaching the Canal Basin about 3 p.m., when the members of the excursion will enter the train provided by the G.T.R., and visit the Victoria Bridge, Workshops, etc.

---

The Excursions to Lachine by the Grand Trunk Railway, to Quebec by the Richelieu and Ontario Navigation Co.'s steamer, and return by the North Shore Railway, to Ottawa, by the Canadian Pacific Railway, to Newport by the South Eastern Railway are given by these companies free of cost.

The excursion to the Harbour, Victoria Bridge, and Grand Trunk Workshops is due to the courtesy of the Harbour Commissioners and the Grand Trunk Railway Co.

