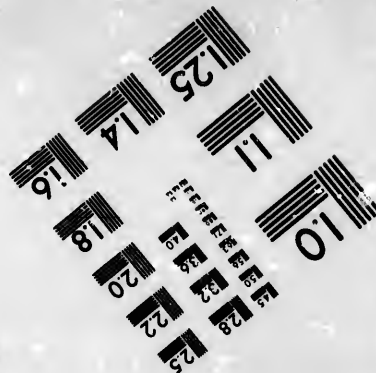
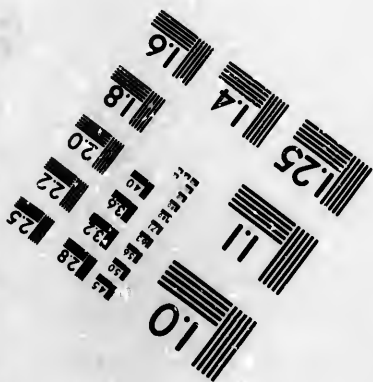
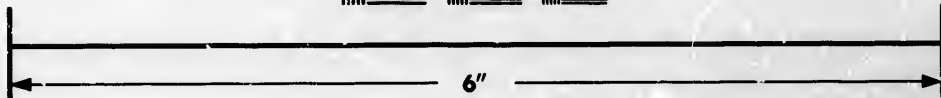
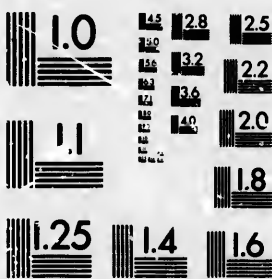


**IMAGE EVALUATION
TEST TARGET (MT-3)**



**Photographic
Sciences
Corporation**

23 WEST MAIN STREET
WEBSTER, N.Y. 14580
(716) 872-4503

1.5 12.8 12.5
1.2 12.2
1.0 2.0
0.8

**CIHM/ICMH
Microfiche
Series.**

**CIHM/ICMH
Collection de
microfiches.**



Canadian Institute for Historical Microreproductions / Institut canadien de microreproductions historiques

1.0

© 1982

Technical and Bibliographic Notes/Notes techniques et bibliographiques

The Institute has attempted to obtain the best original copy available for filming. Features of this copy which may be bibliographically unique, which may alter any of the images in the reproduction, or which may significantly change the usual method of filming, are checked below.

L'institut a microfilmé le meilleur exemplaire qu'il lui a été possible de se procurer. Les détails de cet exemplaire qui sont peut-être uniques du point de vue bibliographique, qui peuvent modifier une image reproduite, ou qui peuvent exiger une modification dans la méthode normale de filmage sont indiqués ci-dessous.

- Coloured covers/
Couverture de couleur
- Covers damaged/
Couverture endommagée
- Covers restored and/or laminated/
Couverture restaurée et/ou pelliculée
- Cover title missing/
Le titre de couverture manque
- Coloured maps/
Cartes géographiques en couleur
- Coloured ink (i.e. other than blue or black)/
Encre de couleur (i.e. autre que bleue ou noire)
- Coloured plates and/or illustrations/
Planches et/ou illustrations en couleur
- Bound with other material/
Relié avec d'autres documents
- Tight binding may cause shadows or distortion
along interior margin/
La reliure serrée peut causer de l'ombre ou de la
distortion le long de la marge intérieure
- Blank leaves added during restoration may
appear within the text. Whenever possible, these
have been omitted from filming/
Il se peut que certaines pages blanches ajoutées
lors d'une restauration apparaissent dans le texte,
mais, lorsque cela était possible, ces pages n'ont
pas été filmées.
- Additional comments:/
Commentaires supplémentaires:

- Coloured pages/
Pages de couleur
- Pages damaged/
Pages endommagées
- Pages restored and/or laminated/
Pages restaurées et/ou pelliculées
- Pages discoloured, stained or foxed/
Pages décolorées, tachetées ou piquées
- Pages detached/
Pages détachées
- Showthrough/
Transparence
- Quality of print varies/
Qualité inégale de l'impression
- Includes supplementary material/
Comprend du matériel supplémentaire
- Only edition available/
Seule édition disponible
- Pages wholly or partially obscured by errata
slips, tissues, etc., have been refilmed to
ensure the best possible image/
Les pages totalement ou partiellement
obscurcies par un feuillet d'errata, une pelure,
etc., ont été filmées à nouveau de façon à
obtenir la meilleure image possible.

This item is filmed at the reduction ratio checked below/
Ce document est filmé au taux de réduction indiqué ci-dessous.

10X	12X	14X	16X	18X	20X	22X	24X	26X	28X	30X	32X
<input type="checkbox"/>	<input type="checkbox"/>	<input type="checkbox"/>	<input type="checkbox"/>	<input type="checkbox"/>	<input type="checkbox"/>	<input checked="" type="checkbox"/>	<input type="checkbox"/>	<input type="checkbox"/>	<input type="checkbox"/>	<input type="checkbox"/>	<input type="checkbox"/>

The copy filmed here has been reproduced thanks to the generosity of:

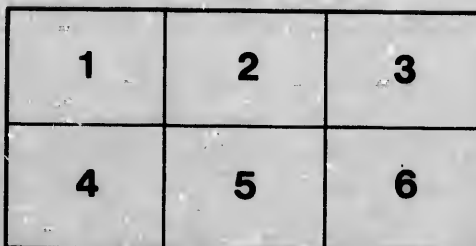
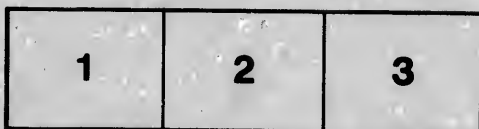
Harold Campbell Vaughan Memorial Library
Acadia University

The images appearing here are the best quality possible considering the condition and legibility of the original copy and in keeping with the filming contract specifications.

Original copies in printed paper covers are filmed beginning with the front cover and ending on the last page with a printed or illustrated impression, or the back cover when appropriate. All other original copies are filmed beginning on the first page with a printed or illustrated impression, and ending on the last page with a printed or illustrated impression.

The last recorded frame on each microfiche shall contain the symbol \rightarrow (meaning "CONTINUED"), or the symbol ∇ (meaning "END"), whichever applies.

Maps, plates, charts, etc., may be filmed at different reduction ratios. Those too large to be entirely included in one exposure are filmed beginning in the upper left hand corner, left to right and top to bottom, as many frames as required. The following diagrams illustrate the method:



L'exemplaire filmé fut reproduit grâce à la générosité de:

Harold Campbell Vaughan Memorial Library
Acadia University

Les images suivantes ont été reproduites avec le plus grand soin, compte tenu de la condition et de la netteté de l'exemplaire filmé, et en conformité avec les conditions du contrat de filmage.

Les exemplaires originaux dont la couverture en papier est imprimée sont filmés en commençant par le premier plat et en terminant soit par la dernière page qui comporte une empreinte d'impression ou d'illustration, soit par le second plat, selon le cas. Tous les autres exemplaires originaux sont filmés en commençant par la première page qui comporte une empreinte d'impression ou d'illustration et en terminant par la dernière page qui comporte une telle empreinte.

Un des symboles suivants apparaîtra sur la dernière image de chaque microfiche, selon le cas: le symbole \rightarrow signifie "A SUIVRE", le symbole ∇ signifie "FIN".

Les cartes, planches, tableaux, etc., peuvent être filmés à des taux de réduction différents. Lorsque le document est trop grand pour être reproduit en un seul cliché, il est filmé à partir de l'angle supérieur gauche, de gauche à droite, et de haut en bas, en prenant le nombre d'images nécessaire. Les diagrammes suivants illustrent la méthode.

rata
o

elure,
à

A 361,971
H 132

RULES

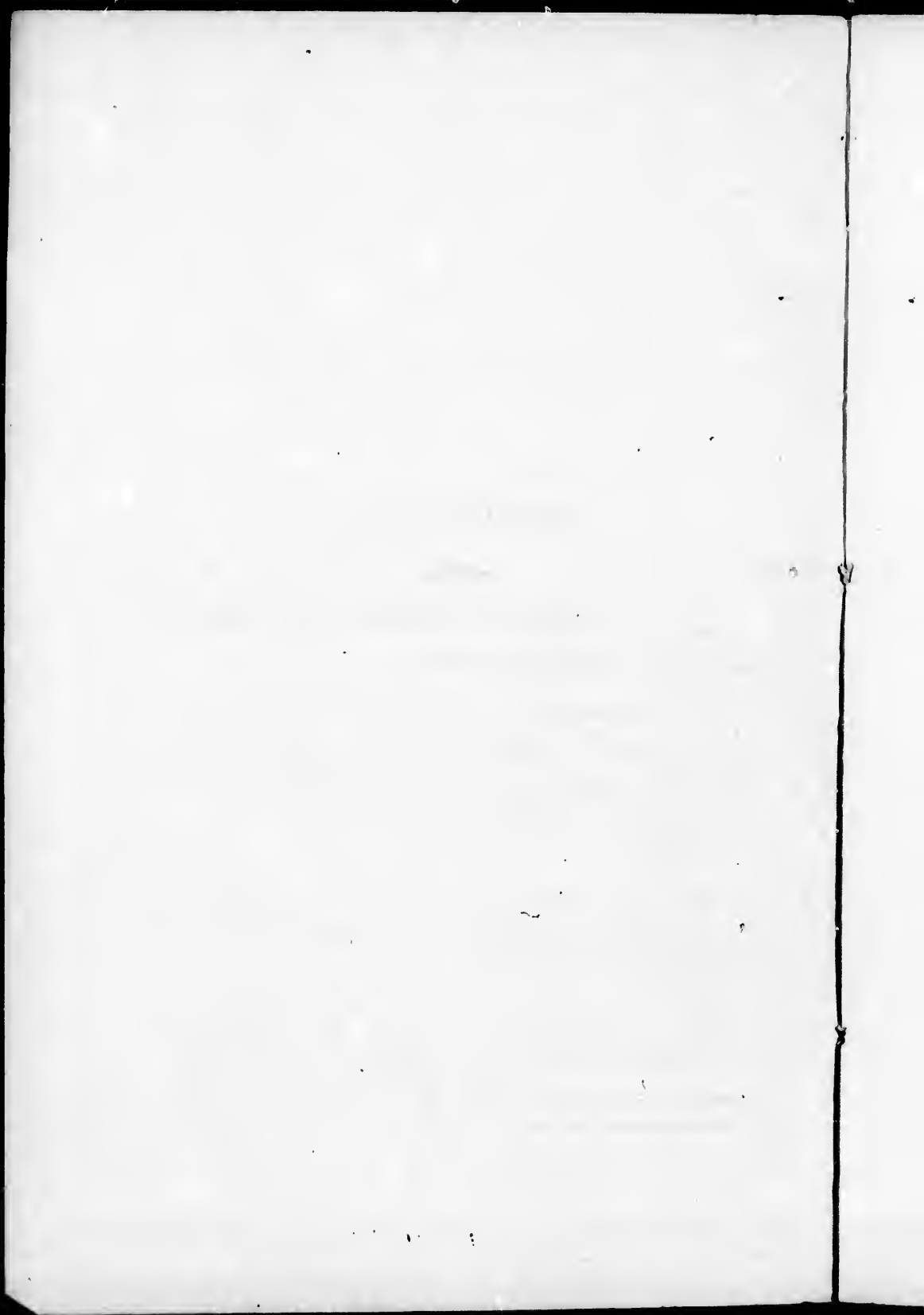
AND REGULATIONS

OF THE

INFANT SCHOOL SOCIETY,

CONSTITUTED IN MAY, 1833.

PRINTED AT THE NOVA SCOTIAN OFFICE.



CONSTITUTION.



Article 1st.—This Society shall be called “THE INFANT SCHOOL SOCIETY OF HALIFAX.”

Article 2d.—The object of this Society shall be to establish a School, where the Infant children of the poor may be taught various branches of useful knowledge, especially to instil into their tender minds, moral and religious instruction.

Article 3rd.—This Society shall be supported by annual subscriptions, and donations, collected by the Managers and friends of the Institution.

Article 4th.—This Society shall consist of a Patroness, Vice Patroness, Treasurer, Secretary, and a Committee of twelve married ladies, who shall each appoint two other ladies to assist them in their duties.

Article 5th.—The Patroness, and in her absence the Vice Patroness, shall preside in all Meetings of the Board, and appoint special Meetings when necessary.

Article 6th.—It shall be the duty of the Treasurer to keep a register of names of Subscribers and Donors, see that all monies are collected, and render a statement of receipts and expenditures, at the Annual Meeting.

Article 7th.—It shall be the duty of the Secretary to notify all Meetings of the Society, keep a report of their proceedings, write and answer all letters relative to the business of the Society, and take a general interest in the concerns of the School.

Article 8th.—It shall be the duty of the Committee to superintend the concerns of the School, solicit funds, engage Scholars, visit the School daily during their respective months, and meet once a month with the other Officers for the transaction of business.

Article 9th.—The Annual Meeting to be held the first Tuesday in June, the Monthly, first Tuesday in each month at 12 o'clock, at the School Room.

Article 10th.—Annual Subscribers shall be entitled to the privilege of sending one of their children to the School, if it does not interfere with the children of the Poor, at 10s per quarter.

Article 11th.—The Officers to be chosen at the Annual Meeting.

MANAGERS.

- MRS. ALMON, *Patroness.*
 MRS. R. UNIACKE, *Vice Patroness.*
 MRS. RUSSELL, *Treasurer.*
 MRS. JAMES JOHNSTON, *Secretary.*

COMMITTEE.

- Jan.—Mrs. Leishman, Miss Leishman, Miss Donaldson.
 Feb.—Mrs. Tidmarsh, Miss Greenwood, Miss Tidmarsh.
 March.—Mrs. C. Twining, Miss E. Tremain, Miss Binney.
 April.—Mrs. Austen, Mrs. Joseph Howe, Mrs. Foster.
 May.—Mrs. Crawley, Mrs. John Johnston.
 June.—Mrs. Tremain, Misses Tremain, Miss C. Foreman.
 July.—Mrs. Hume, Mrs. Gray, Miss S. Grant.
 August.—Mrs. Harvie.
 Sept.—Mrs. Marshall, Miss M'Lean, Miss Twining.
 Oct.—Mrs. J. W. Morris, Misses Morris.
 Nov.—Mrs. M. Almon, Mrs. L. Johnston, Miss Lawson.
 Dec.—*Mrs. J. Allison,*

