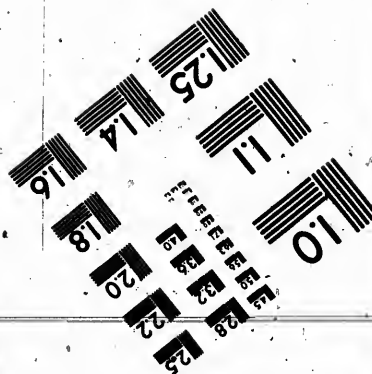
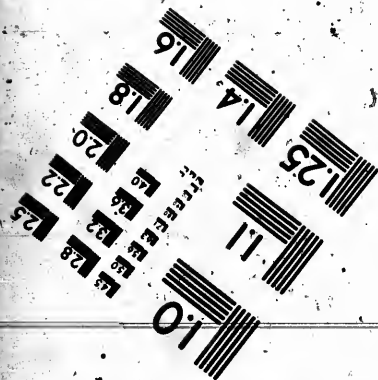
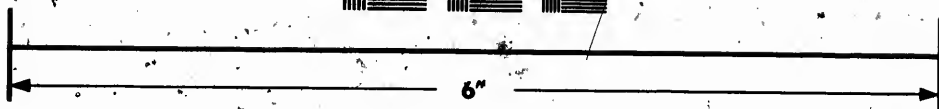
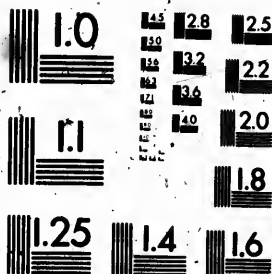


**IMAGE EVALUATION
TEST TARGET (MT-3)**



**Photographic
Sciences
Corporation**

23 WEST MAIN STREET
WEBSTER, N.Y. 14580.
(716) 872-4503

128
125
122
120
118

**CIHM/ICMH
Microfiche
Series.**

**CIHM/ICMH
Collection de
microfiches.**



Canadian Institute for Historical Microreproductions / Institut canadien de microreproductions historiques

117
110
107

© 1987

The copy filmed here has been reproduced thanks to the generosity of:

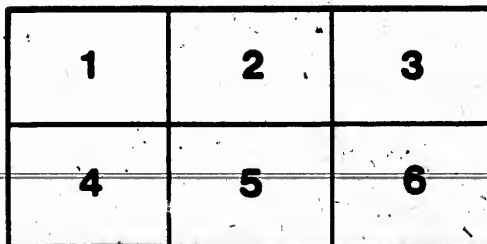
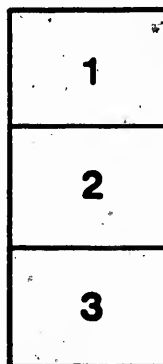
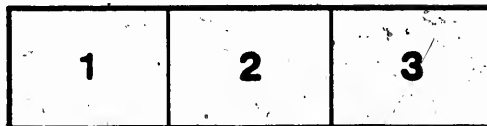
Stratford Perth Archives
Stratford, Ontario

The images appearing here are the best quality possible considering the condition and legibility of the original copy and in keeping with the filming contract specifications.

Original copies in printed paper covers are filmed beginning with the front cover and ending on the last page with a printed or illustrated impression, or the back cover when appropriate. All other original copies are filmed beginning on the first page with a printed or illustrated impression, and ending on the last page with a printed or illustrated impression.

The last recorded frame on each microfiche shall contain the symbol \rightarrow (meaning "CONTINUED"), or the symbol ∇ (meaning "END"), whichever applies.

Maps, plates, charts, etc., may be filmed at different reduction ratios. Those too large to be entirely included in one exposure are filmed beginning in the upper left hand corner, left to right and top to bottom, as many frames as required. The following diagrams illustrate the method:



L'exemplaire filmé fut reproduit grâce à la générosité de:

Stratford Perth Archives
Stratford, Ontario

Les images suivantes ont été reproduites avec le plus grand soin, compte tenu de la condition et de la netteté de l'exemplaire filmé, et en conformité avec les conditions du contrat de filmage.

Les exemplaires originaux dont la couverture en papier est imprimée sont filmés en commençant par le premier plat et en terminant soit par la dernière page qui comporte une empreinte d'impression ou d'illustration, soit par le second plat, selon le cas. Tous les autres exemplaires originaux sont filmés en commençant par la première page qui comporte une empreinte d'impression ou d'illustration et en terminant par la dernière page qui comporte une telle empreinte.

Un des symboles suivants apparaîtra sur la dernière image de chaque microfiche, selon le cas: le symbole \rightarrow signifie "A SUIVRE", le symbole ∇ signifie "FIN".

Les cartes, planches, tableaux, etc., peuvent être filmés à des taux de réduction différents. Lorsque le document est trop grand pour être reproduit en un seul cliché, il est filmé à partir de l'angle supérieur gauche, de gauche à droite, et de haut en bas, en prenant le nombre d'images nécessaires. Les diagrammes suivants illustrent la méthode.

Revd. - CAT - 3C

PRICE LIST



EVERY GENUINE
DODGE PULLEY
HAS THIS STAMP
ON THE HUB



EVERY PULLEY
A SEPARABLE
OR SPLIT
PULLEY

WOOD SPLIT PULLEYS
WITH PATENT BUSHING SYSTEM

(GUARANTEED TO SAVE FROM 50 TO 60 PER CENT OF POWER)

"NO LICENSEES"

SOLE MANUFACTURERS IN CANADA

DODGE

Wood Split Pulley Co.

OFFICE

74 YORK STREET, TORONTO, ONT.

NOTICE.

1916

We challenge the World with our Patent
WIND POWER PULLEY and Patent Hoisting
System on the following points of merit:

Perfect Balance

Best Hoist-System in the World

The Hoisting System is

The Hoisting System is

The Hoisting System is

The Hoisting System is

The Hoisting System is

The Hoisting System is

The Hoisting System is

The Hoisting System is

The Hoisting System is

The Hoisting System is

The Hoisting System is

The Hoisting System is

The Hoisting System is

The Hoisting System is

The Hoisting System is

The Hoisting System is

The Hoisting System is

The Hoisting System is

The Hoisting System is

To Our

GEN

custom

inform

of wo

Doc

cessfu

by cor

bore v

and th

made

with p

pulley

Up

imitat

in ma

but th

we as

posall

caref

TORONTO, ONT., August 1st, 1897.

To Our Agents and Customers:

GENTLEMEN:—In justice to ourselves as well as agents and customers, we deem it proper to impart to you the following information in order that none may be deceived in the purchase of wood split pulleys with patent bushing system.

Dodge & Phillion were the original inventors of the first successful wood split pulley. The pulley included, 1st, fastening by compression, without set-screw or key; 2d, standard hub bore with system of standardized interchangeable bushings, and they were the first to introduce it to the public. We have made many improvements and have carefully covered our rights with patents, of which we have twenty-one referring to wood pulleys.

Up to this time no one has made wood split pulleys without imitating us, and no one has made pulleys of equal excellence in material and workmanship. This makes it unsafe to buy any but the original and best, patent "Independence" pulley, which we assure you is offered at a price as reasonable and low as is possible for first-class work. Please examine the following carefully.

Yours truly,

Dodge Wood Split Pulley Co.

Our Special Guarantee

Under Which Every Pulley is Sold.

We Guarantee every Pulley made by us shall be, in every respect, as represented.

We Guarantee the Poplar Face Pulley in every case, to transmit from 25 to 60 per cent. more power with the same belt than any Iron Pulley made with like tension of Belt.

We Guarantee the Compression Fastening in every case to be perfect and to hold firmly upon the shaft.

We Guarantee the Compression of Wood on Iron to hold stronger than set screws in any case, and to be the most perfect fastening ever invented.

To Summarize:—We guarantee satisfaction entire.

Any Pulley found defective and not as represented, may be returned at our expense.

We will allow any party who is skeptical as to the merits of our Wood Split Pulley, and who means business, a trial of 30 days, and if not satisfactory, to be returned at our expense.

We solicit your orders, knowing we have the best and handiest Pulley ever made.

DODGE WOOD SPLIT PULLEY CO.

OFFICE, 74 YORK ST.

TORONTO, ONT.

POINTERS

ON THE

Dodge Patent Wood Split Pulleys

WITH PATENT

Standardized Bushing System.

It is becoming more and more an acknowledged fact that the Wood Split Pulley will largely take the place of the iron, both on account of its lightness and fine belt surface, and because in these days of progression, a split pulley has become a necessity. The Wood Split Pulley will be found much cheaper than the split iron one, less cumbersome, and of one-third the weight.



Every Genuine Dodge Pulley bears this
Trade Mark.

The Dodge Pulley is the pioneer Wood Split Pulley in the field as well as the best and strongest made, and all others are inferior to it in many respects. The following are the leading points, which can only be imitated by infringement.

- 1st. The compression fastening.
- 2d. The standardized interchangeable bushing system.

3d. The anchoring of the ends of the arms in the rim, which, if not properly done, will inevitably cause it to go to pieces if in any of the joints there is the slightest motion. This has been overcome in the Independence by the interlocking dovetail with the wedge, and is patented.

4th. The interlocking joint in the ends of the rim is so that when the pulley is bolted together it becomes the same as a solid rim. This is patented.

5th. They are put together without nails. The rim may swell and shrink without being affected. When nails are used, slight swelling draws the nails and slight shrinking splits the pulley, because the nails will not go back again. This is patented.

6th. The Dodge Independence Pulley has all the open spaces around the head of the arms filled with a plastic material which hardens without shrinking and gives a perfect support to the rim over the ends of the arms.

These points are all covered by letters patent.

The general superiority of workmanship of the Independence Wood Split Pulley is apparent to the eye, and this is a good indication of careful and good construction inside, where all the weak points of a pulley are hidden.

The success of the Dodge Independence Pulley has, as is always the case, brought many imitations of it in the market, constructed on the same general principles as the Independence, and an infringement of our patents.

The business public can afford to tie to a good thing, but can ill afford to buy an inferior article. We are compelled to defend our rights and we have endeavored to caution the public against inferior and infringing pulleys. For that purpose we issue this circular and endeavor to interpret our rights as granted by the Can. Government, that all may understand and respect them.

Wh

A
the
line
ingT
By i
the
be o
whi
notT
the
thorT
segrcent
halv
and
endsho
the
or h
tionadh
is osegr
seenB
roun
theT
wel
Tcoh
tha

M

pov
trooof p
taksar
dencan
sav
way
tur

Why Our Patent Independence Wooden Pulleys Are Better Than Any Other.

A Wooden Pulley of our make is better than an iron one from the fact that it can be made lighter and thus save weight on the line shaft and bearings, thereby saving in expense from a saving in friction.

The Advantages of the separable pulley are very apparent. By its use the necessity of taking down shafting already up for the purpose of putting on additional pulleys when needed, or to be changed, is avoided, thus saving time, trouble and expense, while their first cost is much less than any other pulley made not having these advantages.

The Advantage of a Split Pulley frequently saves ten times the cost of the Pulleys. We use only carefully selected timber, thoroughly seasoned, then kiln-dried and tempered.

The Rim is constructed by building up a series of rings of segments being glued with insoluble glue. This ring forms the central part of the pulley, and after being turned it is cut in halves transversely. The spoke or hub bars are fitted together and hand sawed. These parts are secured at their ends to the ends of the ring segments by means of a dovetail and wedge, as shown in cut on page 24, the parts of the bar are so placed in the ring segments that they will not touch each other at the axis or hub of the wheel when the ring segments are placed in position, thus when bolted or made fast to the shaft, a much stronger adhesion is gained than is possible where the area of the contact is confined to the point of a set screw on one side, and a small segment of the hub on the opposite side. Thus it will be readily seen that our pulley has the most perfect fastening ever made.

Being made as above described, they will not wear out of round, as wood does not shrink or swell perceptibly in the line of the length of the grain, it is impossible to get out of shape.

These Pulleys Average Not Over 30 per Cent. of the weight of iron pulleys of similar dimensions.

They are Turned over their entire surface in lathes specially constructed for the purpose and are in more perfect balance than is possible for any iron pulley to be made.

Waste of Power.

Mechanical men the world over appreciate the great loss of power due to excessive weights sustained on shafting. The introduction of the "Independence" pulley has reduced the weight of pulleys fully seventy per cent. Any manufacturer who will take the pains to investigate the loss of power due to unnecessary weight on shafting, and compare the weights of "Independence" pulleys with the iron ones in use, will readily see what can be saved and what others are saving in power annually. A saving of power acts through the coal pile, and in many other ways manifests itself toward a more economical plant, which in turn increases dividends and renders higher wages possible.

**Order One Pulley to Replace Some Iron Pulley Giving
You Trouble by Slipping Belts.**

Miscellaneous Notes.

Haswell, an Acknowledged Authority and most quoted by American mechanics, summarizes thus: The ratio of friction to pressure for leather belts when worn over wooden pulleys is 47, over turned cast iron pulleys 24. Thus showing the average advantage of a wood pulley over iron to be about 50 per cent.

The Compression Fastening, whether used with keys in iron center or compression alone, keeps the pulley always in balance, as the compression on the shaft and key is always towards the center.

The Most Perfectly balanced iron pulley fastened with set screws or key, is invariably out of balance by being thrown from the center. This fact is obvious to all mechanics.

When the Shaft is Very Small and a large amount of power is required and the area of surface in contact is not sufficient, we make the pulley with a keyseat and key the pulley to the shaft, and then by compression on the key and shaft, it is not thrown out of balance as by the use of set screws and keys as commonly fitted.

We Guarantee the Compression of Wood on Iron to hold stronger than steel set screws in any case, and on shafts above $\frac{3}{4}$ inches in diameter, stronger than keys as ordinarily fitted.

The Method of Fastening does not mar or injure the shafting in the slightest degree. No weakening of shafts as from key ways or burrs, or rings on small shafting, as in the use of set screws. No delays from broken set screws or rusted keys, or taking down of shafting to change a pulley. This advantage alone frequently saves more than ten times the cost of a pulley

The Advantages of Our Mode of Fastening over any other are:

First:—It is the only absolutely true fastening for a pulley. A pulley once properly balanced cannot be thrown out of balance in being secured with this fastening. A pulley fastened with key or set screw in the ordinary way, cannot be screwed without lifting the pulley from the shaft at that point where key or set screw is placed, thus throwing the pulley out of balance.

It is a More Secure Fastening than a set screw in any case, and more so than an ordinary key as usually fitted.

The Shaft Where the Pulley is to be fastened should be cleaned or wiped off with shavings or waste.

All Pulleys Should be Examined after running a day or two and set up tighter if possible, and should you wish to use a pulley you have on hand of our make that is bored for a size or two larger shafting, it may be bushed successfully with paper or leather and drawn up perfectly tight and used successfully on smaller shafting until you order a new bushing, thus not delaying you for want of a proper size bushing.

Note Carefully Our Bushing System. It is cheaper to buy a new Split Pulley any time than to take down a line of shafting and shift pulleys.

**Dodge Patent Independence Wood Split Pulley
with Patent Standardized Bush-
ing System.**



oted by
friction
illeya is
verage
cent.

keys in
ways in
always

with set
thrown

of power
efficient,
y to the
It is not
keys as

a to hold
ts above
fitted.

ne shaft-
rom key
se of set
keys, or
vantage
a pulley
over any

a pulley.
t of bal-
fastened
screwed
here key
balance.
any case,

should be

a day or
sh to use
for a size
th paper
cessfully
thus not

er to buy
of shaft-

Small Wood Split Pulleys.

(Patented.)



Our small Wood Split Pulley embodies simplicity and strength; it is manufactured of specially selected material and every care taken in construction. This pulley consists of two principal parts, there being no loose caps or other pieces fastened on to give trouble. The irregular line in the rim at the junction of the halves (patented) insures a constantly true running and concentric periphery, as in our regular two and four arm pulleys. We use special refined iron bolts with pointed ends and slotted heads, the nuts being imbedded solidly in the rim and brimstoned, also a flat steel wrench attachment, made to fit in any wrench, which greatly facilitates mounting pulley on shaft and without the assistance of any special tools whatever. Our Patent Standardized Wood Split Bushing System is used in connection with these small pulleys, one bushing being furnished free of charge with each pulley. Owing to the small diameter of these pulleys, and the fact that nearly all are used on light shafting, we bore these pulleys to a smaller standard, 27-16 inches, and furnish bushings of same standard outside diameter.

Our small pulleys are subject to our special guarantee on page 2.

EVERY PULLEY A SPLIT PULLEY.

In Comparing Prices on Pulleys, Please Note Carefully the Following.

- 1st. Every Pulley is a Split Pulley.
- 2d. Every Pulley is guaranteed to transmit from 25 to 60 per cent. more power than iron with the same tension of belt.
- 3d. They are 70 per cent. lighter than iron pulleys.
- 4th. The fastening does not mar the shaft.
- 5th. Can be used on different sizes of shaft.
- 6th. They are in perfect balance.
- 7th. They are the most thoroughly made Wood Pulleys in the world.
- 8th. Are the handsomest pulleys on the shaft ever made.
- 9th. No chances to take, every pulley guaranteed as represented or no sale. Order a sample pulley.

All our Wood Split Pulleys are sufficiently strong for the heaviest double leather belts made.

Please refer to our special guarantee, page 2, under which every pulley is sold.

If what we claim is true, no manufacturer can afford to use any other pulley.

No dealer can afford to carry a stock of pulleys such as is required by any other system.

eyes.

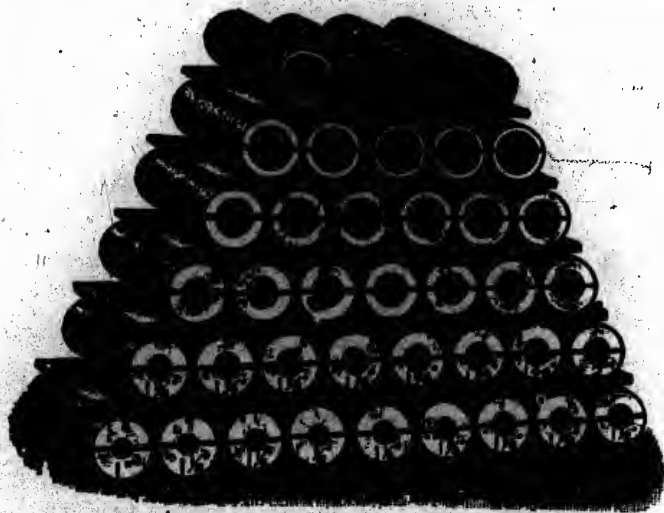


simplicity
y selected
on. This
e being no
e trouble.
ion of the
e running
r two and
iron bolts
uts being
ed, also a
t in any
g pulley
y special
ed Wood
ion with
shed free
he small
at nearly
e pulleys
furnish
ial guar-

THE DODGE PATENT STANDARDIZED
Wood Split Bushing System.

Consists in boring all of our Wood Split Pulleys to a large standard bore and then with our patent Standardized Wood Bushing System, all pulleys may be utilized to fit shafts of various sizes.

This system of Standardized Wood Bushings, made from elastic materials which readily allow the bushing to conform to the irregularities commonly found in commercial shafting, is original with us, and is patented in both the United States and Canada. The patents are owned and controlled by us exclusively.



Illustrating the range of shaft sizes to which a standard $3\frac{1}{2}$ -inch bore pulley may be applied—advancing from 1-inch shaft by sixteenths, to 37-16 inches.

Ex
sto
pul
24
up
for
all
in.
3 in
ing
lar
qui
ley
wi
bus
size
thu
ufa
cha
line
ano
ent.
the
han
ling
selv
fill o
men
size
can
man
enat
nary
and
pulle
ante

6 to
10 to
14 to
18 to

Sub
on ap

The Dodge Patent Standardized Wood Split Bushing System.

EXPLANATION--For stock, we make all pulleys in size from 24 in. diameter and upwards with bore for 3 1/4 in. shaft, and all pulleys below 24 in. in diameter for 3 in. shaft (excepting cases where larger bore is required). Each pulley is furnished with one wood bushing to fit any size shaft wanted, thus enabling manufacturers to make changes from one line of shafting to another of different size, and utilize the pulleys on hand; also enabling dealers (ourselves as well) to fill orders promptly by simply carrying in stock a full assortment of bushings. Can make any one pulley fit forty or more sizes of shafting. Thus, with a moderate stock of pulleys, orders can be filled at once and without delay, which frequently costs many times more than the pulleys themselves. This system enables a dealer (with say one-fortieth of the stock of the ordinary pulleys bored to fit one size of shaft) to fill more orders and with greater dispatch, thereby saving a large investment in pulleys and a large amount of storage room.



NOTE.—This system is also subject to our special guarantee on page 2

Price List for Extra Wood Bushings.

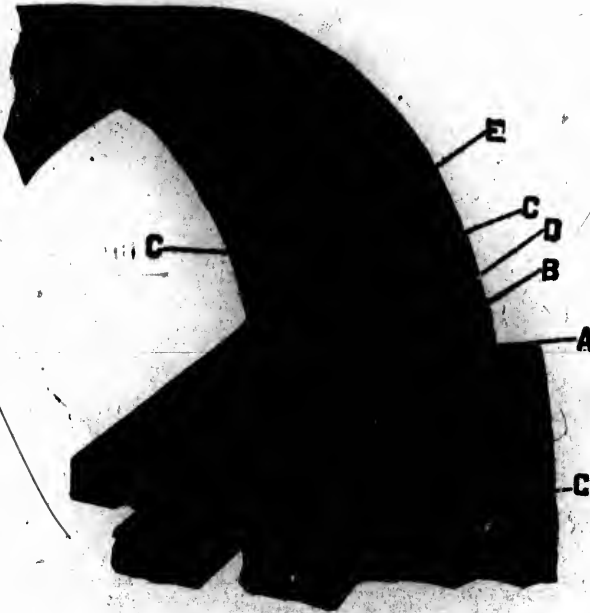
LENGTH.	OUTSIDE DIAMETER IN INCHES.				
	2 & 27-16	3	3 1/2	4	4 1/2
6 to 8 inches	25	30	35	45	60
10 to 12 inches	30	35	40	50	70
14 to 16 inches	35	40	45	60	80
18 to 20 inches		45	55	70	90

Subject to same discount as pulleys. Net prices will be quoted on application for bushings of larger dimensions.

STANDARDIZED
stem.

ys to a large
dized Wood
afts of vari-
e from elas-
to form to the
ng, is origi-
es and Can-
clusively.

Standard 3 1/2-
ch shaft



Every Pulley a Split Pulley.

- A. Bandsawed joint in the rim to act as a guide in clamping pulley.
 - B. Wedge for the purpose of securing the dovetail joint.
 - C, C, C. Anchor bolts between arms and rim, to prevent motion at joint D.
 - D. Dovetail joint where end of arm enters rim.
 - E. Concealed nut of anchor bolt.
- Order a sample pulley, after which you will have no other make.

Give d

Do not
to be use
a non-shi

Give ex
of an inc

Do not
not order
under star
the exact



How to Order Pulleys.

Give diameter of Pulley.

Do not order a certain face, but give width of belt to be used, and state whether it is to be a shifting or a non-shifting belt.

Give exact bore, and if it is not in odd sixteenths of an inch state it to be net.

Do not write 2 inches if 1 15-16 is meant, and do not order it "full" or "scant." If it is to be over or under standard, send a nail or a piece of wire filed to the exact size.

Example of Order.

One 36 inch pulley for 6 inch shifting belt, 27-16 bore.

One 36 inch pulley for 6 inch non-shifting belt, 2½ inch bore, net, say crown or straight.

When ordered as above we will furnish for a non-shifting belt a round faced pulley from ¼ to ¾ of an inch wider than the belt, or for a shifting belt, a flat faced pulley from ¼ to ¾ of an inch wider than double the width of the belt.

If, instead of ordering by the belt a certain face is called for, it will probably necessitate cutting a wider face down to the size ordered, in which case the wider face will be charged for.

If any bore not in odd sixteenths of an inch is ordered, and is not stated to be net or for cold rolled shafting, we shall have to write for further particulars before finishing the work.

The Dodge Independence Wood Split Pulley is patented—Great Britain and Canada.

Patented in the United States. July 4, 1862; April 17, 1863; April 24, 1863; August 31, 1866; August 31, 1866, October 19, 1866; December 21, 1866; March 15, 1867; March 29, 1867; August 16, 1867; August 23, 1867; August 23, 1867; August 23, 1867; September 27, 1867

Package.

Our Wood Split Pulleys are all nicely wrapped with thin lumber sawed for the purpose, which protects the face perfectly. We make no charge for package unless boxed, and then we charge package at cost to us.

Freights.

We always contract for the lowest rates possible. In shipping by express, the expressage is less than one-half that on any other pulley; freight likewise, as weights average 70 per cent. less than iron.

The

Diam.
Inches.

3

4

5

6

7

8

Price List of Wood Split Pulleys.

The following prices will be found lower than any other published.

Diam. Inches.	Face Inches.	Price.	Diam. Inches.	Face Inches.	Price.	Diam. Inches.	Face Inches.	Price.	Diam. Inches.	Face Inches.	Price.
3	2	\$1 80	8	4	\$2 55	13	11	\$5 20	17	11	\$ 7 10
	3	1 90		5	2 80		12	5 60		12	7 50
	4	2 00		6	3 00	14	3	3 00		13	7 85
	5	2 10		7	3 15		4	3 25		14	8 25
	6	2 25		8	3 30		5	3 65		15	9 05
	7	2 40		9	3 45		6	4 10			
	8	2 55	9	10	3 60		7	4 40	18	3	3 70
	9	2 70		3	2 50		8	4 70		4	4 05
	10	2 85		4	2 65		9	5 05		5	4 55
4	2	1 90		5	2 80		10	5 35		6	5 10
	3	2 00		6	3 15		11	5 65		7	5 65
	4	2 10		7	3 25		12	6 00		8	6 20
	5	2 20		8	3 40		13	6 30		9	6 65
	6	2 40	10	3	2 60		14	6 60		10	7 10
	7	2 55		4	2 75	15	3	3 10		11	7 55
	8	2 70		5	3 00		4	3 45		12	8 00
	9	2 85		6	3 25		5	3 85		13	8 50
	10	3 00		7	3 40		6	4 35		14	9 00
5	2	2 00		8	3 55		7	4 75		15	9 80
	3	2 10		9	3 72		8	5 10		16	10 70
	4	2 20		10	3 90		9	5 45		17	11 75
	5	2 35	11	3	2 70		10	5 85		18	13 00
	6	2 55		4	2 85		11	6 18			
	7	2 70		5	3 10		12	6 50	19	4	4 25
	8	2 85		6	3 35		13	6 85		5	4 80
	9	3 00		7	3 65		14	7 20		6	5 50
	10	3 15		8	3 70	16	3	3 30		7	6 13
6	2	2 10		9	3 90		4	3 65		8	6 75
	3	2 20		10	4 10		5	4 05		9	7 15
	4	2 30	12	3	2 80		6	4 60		10	7 50
	5	2 50		4	2 95		7	5 05		11	8 05
	6	2 70		5	3 20		8	5 50		12	8 60
	7	2 85		6	3 55		9	5 90		13	9 20
	8	3 00		7	3 70		10	6 30		14	9 80
	9	3 15		8	3 85		11	6 65		15	10 70
	10	3 30		9	4 05		12	7 00		16	11 70
7	2	2 20		10	4 30		13	7 35		17	12 75
	3	2 30		11	4 70		14	7 70		18	13 80
	4	2 40		12	5 10		15	8 35			
	5	2 65	13	3	2 90	17	3	3 50	20	4	4 45
	6	2 85		4	3 10		4	3 85		5	5 20
	7	3 00		5	3 40		5	4 25		6	6 00
	8	3 15		6	3 75		6	4 85		7	6 80
	9	3 30		7	4 00		7	5 35		8	7 15
	10	3 45		8	4 25		8	5 85		9	7 80
8	2	2 30		9	4 53		9	6 30		10	8 00
	3	2 40		10	4 80		10	6 70		11	8 75

inch bore,
 lifting bolt
 r than the
 % of an
 called for,
 n to the
 yed for.
 ered, and
 hall have
 rk.
 atented—
 17, 1863;
 r 19, 1886;
 ugust 16,
 eptember
 thin lum-
 perfectly.
 then we
 shipping.
 t on any
 per cent.

PRICE LIST—Continued.

Diam. Inches.	Face Inches.	Price.	Diam. Inches.	Face Inches.	Price.	Diam. Inches.	Face Inches.	Price.	Diam. Inches.	Face Inches.	Price.
20	12	\$ 9 80	23	11	\$11 06	25	24	\$30 00	28	7	\$ 9 46
	13	10 25		12	12 00		25	42 50		8	10 30
	14	11 00		13	13 00					9	11 20
	15	11 80		14	14 00	26	4	6 35		10	12 10
	16	12 60		15	15 10		5	7 00		11	13 70
	17	13 60		16	16 20		6	7 95		12	15 25
	18	14 70		17	17 00		7	8 80		13	17 10
				18	18 50		8	9 60		14	19 00
							9	10 05		15	21 00
21	4	4 70	24	4	5 40		10	11 40		16	23 00
	5	5 60		5	6 35		11	12 80		17	24 95
	6	6 40		6	7 30		12	14 20		18	26 90
	7	6 85		7	8 05		13	15 55		20	33 00
	8	7 50		8	8 80		14	17 50		21	35 00
	9	8 10		9	9 65		15	19 15		22	37 00
	10	8 65		10	10 45		16	20 80		23	39 00
	11	9 55		11	11 55		17	22 45		24	41 50
	12	10 40		12	12 70		18	24 10		25	44 50
	13	11 30		13	13 90		20	31 50			
	14	12 00		14	15 10		21	33 50	29	4	7 60
	15	12 85		15	16 30		22	35 50		5	8 20
	16	13 70		16	17 50		23	37 50		6	9 00
	17	14 70		17	18 75		24	40 00		7	9 95
	18	15 80		18	20 00		25	43 50		8	10 90
				20	23 60					9	11 80
				21	30 50	27	4	6 78		10	12 67
22	4	4 95		22	32 50		5	7 40		11	14 20
	5	5 90		23	35 00		6	8 27		12	15 87
	6	6 85		24	37 50		7	9 18		13	17 92
	7	7 45		25	41 00		8	9 95		14	20 00
	8	8 00					9	10 63		15	22 10
	9	8 70	25	4	5 80		10	11 75		16	24 20
	10	9 40		5	6 65		11	13 25		17	26 32
	11	10 30		6	7 60		12	14 72		18	28 45
	12	11 20		7	8 40		13	16 47		20	33 75
	13	12 10		8	9 20		14	18 25		21	35 62
	14	13 00		9	9 85		15	20 00		22	37 62
	15	13 60		10	10 90		16	21 70		23	39 62
	16	14 20		11	12 15		17	23 70		24	41 87
	17	15 60		12	13 40		18	25 60		25	45 00
	18	17 00		13	14 80		20	32 35			
				14	16 25		21	34 25	30	4	8 00
				15	17 70		22	36 25		5	8 80
				16	19 10		23	38 25		6	9 40
				17	20 55		24	40 75		7	10 45
				18	22 00		25	44 00		8	11 50
				20	30 00					9	12 40
				21	32 00	28	4	7 20		10	13 25
				22	34 00		5	7 80		11	14 80
				23	36 50		6	8 60		12	16 50

Diam.
Inches.
30

31

32

PRICE LIST—Continued.

Diam. Inches.	Face. Inches.	Price.	Diam. Inches.	Face. Inches.	Price.	Diam. Inches.	Face. Inches.	Price.	Diam. Inches.	Face. Inches.	Price.		
7	9	45	30	13	18 75	32	20	36 25	34	24	46 75		
8	10	30	14	21 00		21	38 25		25	49 00	38	9	19 15
9	11	20	15	23 20		22	40 25					10	20 70
10	12	10	16	25 40		23	42 25					11	22 70
11	13	70	17	27 70		24	44 25	35	4	10 10		12	24 75
12	15	25	18	30 00		25	46 50		5	11 20		13	26 00
13	17	10	20	34 50					6	12 25		14	28 50
14	19	00	21	36 25					7	13 75		15	31 50
15	21	00	22	38 25	33	4	9 20		8	15 25		16	34 50
16	23	00	23	40 25		5	9 85		9	16 65		17	36 90
17	24	95	24	42 25		6	10 90		10	18 05		18	39 25
18	26	90	25	45 50		7	12 30		11	19 62		20	45 00
20	33	00				8	13 70		12	21 25		21	47 00
21	35	00	31	4	8 40	9	14 85		13	23 50		22	49 00
22	37	00	5	9 00		10	16 00		14	25 50		23	51 50
23	39	00	6	9 85		11	17 47		15	28 35		24	54 00
24	41	50	7	11 02		12	18 95		16	31 20		25	58 00
25	44	50	8	12 20		13	21 45		17	33 47			
			9	13 17		14	23 62		18	35 75	40	6	16 00
4	7	60	10	14 13		15	26 25		20	40 12		7	17 50
5	8	20	11	15 08		16	28 57		21	42 12		8	19 00
6	9	00	12	17 20		17	31 12		22	44 12		9	20 75
7	9	95	13	19 52		18	33 37		23	46 12		10	22 50
8	10	90	14	21 87		20	37 00		24	48 12		11	24 65
9	11	80	15	24 22		21	39 50		25	51 00		12	26 75
10	12	67	16	26 57		22	41 50	36	4	10 60		13	28 85
11	14	20	17	28 85		23	43 50		5	11 90		14	31 00
12	15	87	18	31 12		24	45 50		6	13 00		15	33 65
13	17	92	20	35 37		25	47 75		7	14 50		16	36 25
14	20	00	21	37 25					8	16 00		17	38 85
15	22	10	22	39 25					9	17 55		18	41 50
16	24	20	23	41 25	34	4	9 60		10	19 10		20	48 00
17	26	33	24	43 25		5	10 50		11	20 80		21	50 50
18	28	45	25	46 00		6	11 50		12	22 50		22	52 50
20	33	75				7	13 00		13	24 50		23	55 00
21	35	62	32	4	8 80	8	14 50		14	26 50		24	58 00
22	37	62	5	9 40		9	15 75		15	29 45		25	63 00
23	39	62	6	10 30		10	17 00		16	32 40			
24	41	87	7	11 60		11	18 50		17	34 70	42	6	17 50
25	45	00	8	12 90		12	20 00		18	37 00		7	19 50
			9	13 95		13	22 50		20	41 50		8	21 50
4	8	00	10	15 00		14	24 50		21	43 50		9	23 25
5	8	50	11	16 45		15	27 25		22	45 50		10	25 00
6	9	40	12	17 90		16	30 00		23	47 50		11	27 00
7	10	45	13	20 30		17	32 25		24	49 50		12	29 00
8	11	50	14	22 75		18	34 50		25	53 00		13	31 25
9	12	40	15	25 25		20	38 75					14	33 50
10	13	25	16	27 75		21	40 75	38	6	14 50		15	36 00
11	14	90	17	30 00		22	42 75		7	16 05		16	38 50
1	16	50	18	32 25		23	44 75		8	17 00		17	41 10

DODGE WOOD SPLIT PULLEY CO.

PRICE LIST—Continued.

42			44			46			48			50			52			54			56			58			60			62			64			66			68			70																																																																																						
Diam. Inches	Face Inches	Price.	Diam. Inches	Face Inches	Price.	Diam. Inches	Face Inches	Price.	Diam. Inches	Face Inches	Price.	Diam. Inches	Face Inches	Price.	Diam. Inches	Face Inches	Price.	Diam. Inches	Face Inches	Price.	Diam. Inches	Face Inches	Price.	Diam. Inches	Face Inches	Price.	Diam. Inches	Face Inches	Price.	Diam. Inches	Face Inches	Price.	Diam. Inches	Face Inches	Price.	Diam. Inches	Face Inches	Price.																																																																																										
18	43	75	6	19	50	6	22	00	8	31	50	8	22	00	8	24	00	8	26	00	8	28	00	8	30	00	8	32	00	8	34	00	8	36	00	8	38	00	8	40	00	8	42	00	8	44	00	8	46	00	8	48	00	8	50	00	8	52	00	8	54	00	8	56	00	8	58	00	8	60	00	8	62	00	8	64	00	8	66	00	8	68	00	8	70	00																																										
20	51	00	7	21	65	7	24	00	9	33	50	9	24	00	9	26	00	9	28	00	9	30	00	9	32	00	9	34	00	9	36	00	9	38	00	9	40	00	9	42	00	9	44	00	9	46	00	9	48	00	9	50	00	9	52	00	9	54	00	9	56	00	9	58	00	9	60	00	9	62	00	9	64	00	9	66	00	9	68	00	9	70	00	9	72	00	9	74	00	9	76	00	9	78	00	9	80	00	9	82	00	9	84	00	9	86	00	9	88	00	9	90	00	9	92	00	9	94	00	9	96	00	9	98	00	9	100	00
21	53	50	8	23	75	8	26	00	10	35	50	10	26	00	10	28	00	10	30	00	10	32	00	10	34	00	10	36	00	10	38	00	10	40	00	10	42	00	10	44	00	10	46	00	10	48	00	10	50	00	10	52	00	10	54	00	10	56	00	10	58	00	10	60	00	10	62	00	10	64	00	10	66	00	10	68	00	10	70	00	10	72	00	10	74	00	10	76	00	10	78	00	10	80	00	10	82	00	10	84	00	10	86	00	10	88	00	10	90	00	10	92	00	10	94	00	10	96	00	10	98	00	10	100	00			
22	55	00	9	25	80	9	28	00	11	37	25	11	28	00	11	30	00	11	32	00	11	34	00	11	36	00	11	38	00	11	40	00	11	42	00	11	44	00	11	46	00	11	48	00	11	50	00	11	52	00	11	54	00	11	56	00	11	58	00	11	60	00	11	62	00	11	64	00	11	66	00	11	68	00	11	70	00	11	72	00	11	74	00	11	76	00	11	78	00	11	80	00	11	82	00	11	84	00	11	86	00	11	88	00	11	90	00	11	92	00	11	94	00	11	96	00	11	98	00	11	100	00						
23	56	00	10	27	80	10	30	00	12	39	00	12	30	00	12	32	00	12	34	00	12	36	00	12	38	00	12	40	00	12	42	00	12	44	00	12	46	00	12	48	00	12	50	00	12	52	00	12	54	00	12	56	00	12	58	00	12	60	00	12	62	00	12	64	00	12	66	00	12	68	00	12	70	00	12	72	00	12	74	00	12	76	00	12	78	00	12	80	00	12	82	00	12	84	00	12	86	00	12	88	00	12	90	00	12	92	00	12	94	00	12	96	00	12	98	00	12	100	00									
24	58	00	11	29	50	11	32	00	13	41	50	13	32	00	13	34	00	13	36	00	13	38	00	13	40	00	13	42	00	13	44	00	13	46	00	13	48	00	13	50	00	13	52	00	13	54	00	13	56	00	13	58	00	13	60	00	13	62	00	13	64	00	13	66	00	13	68	00	13	70	00	13	72	00	13	74	00	13	76	00	13	78	00	13	80	00	13	82	00	13	84	00	13	86	00	13	88	00	13	90	00	13	92	00	13	94	00	13	96	00	13	98	00	13	100	00												
25	63	00	12	31	50	12	34	00	14	44	00	14	34	00	14	36	00	14	38	00	14	40	00	14	42	00	14	44	00	14	46	00	14	48	00	14	50	00	14	52	00	14	54	00	14	56	00	14	58	00	14	60	00	14	62	00	14	64	00	14	66	00	14	68	00	14	70	00	14	72	00	14	74	00	14	76	00	14	78	00	14	80	00	14	82	00	14	84	00	14	86	00	14	88	00	14	90	00	14	92	00	14	94	00	14	96	00	14	98	00	14	100	00															
25	68	00	13	33	75	13	36	00	15	47	00	15	36	00	15	38	00	15	40	00	15	42	00	15	44	00	15	46	00	15	48	00	15	50	00	15	52	00	15	54	00	15	56	00	15	58	00	15	60	00	15	62	00	15	64	00	15	66	00	15	68	00	15	70	00	15	72	00	15	74	00	15	76	00	15	78	00	15	80	00	15	82	00	15	84	00	15	86	00	15	88	00	15	90	00	15	92	00	15	94	00	15	96	00	15	98	00	15	100	00																		
			14	35	75	14	38	00	16	50	00	16	38	00	16	40	00	16	42	00	16	44	00	16	46	00	16	48	00	16	50	00	16	52	00	16	54	00	16	56	00	16	58	00	16	60	00	16	62	00	16	64	00	16	66	00	16	68	00	16	70	00	16	72	00	16	74	00	16	76	00	16	78	00	16	80	00	16	82	00	16	84	00	16	86	00	16	88	00	16	90	00	16	92	00	16	94	00	16	96	00	16	98	00	16	100	00																					
			15	37	75	15	40	00	17	53	00	17	40	00	17	42	00	17	44	00	17	46	00	17	48	00	17	50	00	17	52	00	17	54	00	17	56	00	17	58	00	17	60	00	17	62	00	17	64	00	17	66	00	17	68	00	17	70	00	17	72	00	17	74	00	17	76	00	17	78	00	17	80	00	17	82	00	17	84	00	17	86	00	17	88	00	17	90	00	17	92	00	17	94	00	17	96	00	17	98	00	17	100	00																								
			16	39	75	16	42	00	18	56	00	18	42	00	18	44	00	18	46	00	18	48	00	18	50	00	18	52	00	18	54	00	18	56	00	18	58	00	18	60	00	18	62	00	18	64	00	18	66	00	18	68	00	18	70	00	18	72	00	18	74	00	18	76	00	18	78	00	18	80	00	18	82	00	18	84	00	18	86	00	18	88	00	18	90	00	18	92	00	18	94	00	18	96	00	18	98	00	18	100	00																											
			17	41	00	17	44	00	19	60	00	19	44	00	19	46	00	19	48	00	19	50	00	19	52	00	19	54	00	19	56	00	19	58	00	19	60	00	19	62	00	19	64	00	19	66	00	19	68	00	19	70	00	19	72	00	19	74	00	19	76	00	19	78	00	19	80	00	19	82	00	19	84	00	19	86	00	19	88	00	19	90	00	19	92	00	19	94	00	19	96	00	19	98	00	19	100	00																														
			18	43	25	18	46	00	20	65	00	20	46	00	20	48	00	20	50	00	20	52	00	20	54	00	20	56	00	20	58	00	20	60	00	20	62	00	20	64	00	20	66	00	20	68	00	20	70	00	20	72	00	20	74	00	20	76	00	20	78	00	20	80	00	20	82	00	20	84	00	20	86	00	20	88	00	20	90	00	20	92	00	20	94	00	20	96	00	20	98	00	20	100	00																																	
			19	45	00	19	48	00	21	68	75	21	48	00	21	50	00	21	52	00	21	54	00	21	56	00	21	58	00	21	60	00	21	62	00	21	64	00	21	66	00	21	68	00	21	70	00	21	72	00	21	74	00	21	76	00	21	78	00	21	80	00	21	82	00	21	84	00	21	86	00	21	88	00	21	90	00	21	92	00	21	94	00	21	96	00	21	98	00	21	100	00																																				
			20	47	00	20	50	00	22	71	50	22	50	00	22	52	00	22	54	00	22	56	00	22	58	00	22	60	00	22	62	00	22	64	00	22	66	00	22	68	00	22	70	00	22	72	00	22	74	00	22	76	00	22	78	00	22	80	00	22	82	00	22	84	00	22	86	00	22	88	00	22	90	00	22																																																					

PRICE LIST—Continued.

Diam. Inches.	Face Inches.	Price.
11	80	80 00
12	82	82 25
13	85	85 00
14	87	87 75
15	91	91 00
16	94	94 25
17	98	98 50
18	102	102 75
20	108	108 00
22	114	114 25
24	120	120 50
25	125	125 00
8	47	47 00
9	49	49 25
10	51	51 50
11	53	53 75
12	56	56 00
13	59	59 00
14	62	62 00
15	65	65 25
16	68	68 50
17	73	73 25
18	78	78 00
20	91	91 00
21	96	96 00
22	101	101 00
23	106	106 00
24	111	111 00
25	116	116 00
0	57	57 00
1	60	60 00
2	63	63 50
3	67	67 50
4	71	71 50
5	75	75 50
6	80	80 00
7	84	84 50
8	89	89 00
9	103	103 00
10	109	109 00

Diam. Inches.	Face Inches.	Price.	Diam. Inches.	Face Inches.	Price.	Diam. Inches.	Face Inches.	Price.	Diam. Inches.	Face Inches.	Price.
63	22	\$115 00	84	12	\$110 00	98	22	\$212 00	108	22	\$427 00
	23	122 50		13	114 00		23	224 00		23	451 00
	24	130 00		14	119 00		24	237 00		24	478 00
	25	137 50		15	124 00		25	250 00		25	500 00
72	10	64 00		16	129 00					36	525 00
	11	67 50		17	134 00					40	
	12	71 50		18	139 00					8	159 00
	13	75 50		19	144 00					9	179 00
	14	80 00		20	149 00					10	199 00
	15	85 00		21	154 00	102	8	130 00		11	198 00
	16	90 00		22	160 00		9	140 00		12	205 00
	17	95 00		23	165 00		10	150 00		14	228 00
	18	100 00		24	170 00		11	160 00		16	252 00
	20	115 00		25	175 00		12	171 00		18	277 00
	21	127 00			205 00		14	192 00		20	303 00
	22	131 00					16	213 00		22	329 00
	23	136 00					18	233 00		24	356 00
	24	145 00					20	256 00		26	382 00
	25	155 00					22	279 00		28	408 00
			90	12	125 00		24	302 00		30	435 00
				13	129 00		26	324 00		32	462 00
				14	134 00		28	347 00		34	488 00
				15	139 00		30	370 00		36	515 00
				16	144 00		32	394 00		38	541 00
				17	149 00		34	417 00		40	568 00
				18	154 00		36	440 00			
				19	159 00		38	463 00			
				20	164 00		40	486 00			
				21	169 00				120	8	172 00
				22	174 00					9	184 00
				23	179 00					10	196 00
78	12	95 00		24	184 00					11	208 00
	13	99 00		25	189 00					12	221 00
	14	104 00			200 00					14	246 00
	15	109 00								16	271 00
	16	114 00								18	296 00
	17	119 00								20	321 00
	18	124 00								22	346 00
	20	134 00								24	371 00
	21	140 00								26	396 00
	22	146 00								28	421 00
	23	152 00								30	446 00
	24	158 00								32	471 00
	25	164 00								34	496 00
			96	12	140 00		8	144 00		16	271 00
				13	145 00		9	154 00		18	296 00
				14	150 00		10	165 00		20	321 00
				15	155 00		11	176 00		22	346 00
				16	160 00		12	187 00		24	371 00
				17	165 00		14	209 00		26	410 00
				18	170 00		16	232 00		28	439 00
				19	175 00		18	256 00		30	467 00
				20	180 00		20	280 00		32	496 00
				21	185 00		22	304 00		34	524 00
							24	329 00		36	552 00
							26	353 00		38	581 00
							28	377 00		40	609 00
							30	402 00			

Pulleys built for any power within the limits of belt speed and capacity of shaft.

Tight and Loose Pulleys.



The Loose Pulley is furnished with and iron sleeve, accurately bored and may be fitted with any style of grease or oil cups desired. Should there be any wear, it is a very simple and inexpensive operation to babbitt the sleeve or replace with a new one.

Wood Pulleys used in this way may be used for other purposes in connection with our Patent Bushing System.

Price List of Iron Sleeves.

Face of Pulley Inches.	Bore.	Price.	Face of Pulley Inches.	Bore.	Price.
3	1 3-16	\$1 85	5	1 15-16	3 20
3	1 7-16	2 00	5	2 3-16	3 50
3	1 11-16	2 20	6	1 7-16	3 50
3	1 15-16	2 35	6	1 11-16	3 35
4	1 3-16	2 20	6	1 15-16	3 70
4	1 7-16	2 35	6	2 3-16	4 15
4	1 11-16	2 50	8	1 7-16	3 85
4	1 15-16	2 70	8	1 11-16	4 15
4	1 3-16	2 50	8	1 15-16	4 70
4	1 7-16	2 70	8	2 3-16	5 35
4	1 11-16	2 85			
4	1 15-16	2 85			

Subject to same discount as pulleys with which they are furnished.

Special

Our Special Dy number of years, and manufacturer merits and popula

1. Best belt tr
2. Reduces be
3. Runs nearl
4. Perfectly b
5. Extra stren
6. Will not "f
7. Constructio
8. It more tha

The only special
Lumbian Expositio

Better lights, m
long lasting belts
using this pulley.

We make also a
pulley of the same
pulley shown abov

During the past f
special dynamo pu
some of the largest
this country. In e

SE

...pulleys.

DODGE Special Dynamo Pulleys.



sleeve, accu-
grease or oil
ry simple and
place with a

for other pur-
m.

Our Special Dynamo Pulley has been on the market for a number of years, and its general adoption by the electricians and manufacturers of generators is sufficient evidence of its merits and popularity. We claim:

1. Best belt transmission surface.
2. Reduces belt tension and journal friction to a minimum.
3. Runs nearly noiselessly.
4. Perfectly balanced.
5. Extra strength. (All made for double belt.)
6. Will not "fly to pieces."
7. Construction is of highest order.
8. It more than "fills the bill."

The only special pulley awarded a medal at the World's Columbian Exposition. Order a sample.

Better lights, more steady speed, no delays from hot boxes, long lasting belts, immunity from accidents are assured by using this pulley.

We make also a double armed, iron center, wood rim split pulley of the same general pattern as the smaller single armed pulley shown above.

During the past few years we have supplied a large number of special dynamo pulleys up to 71 inch diameter, 52 inch face, to some of the largest manufacturers of electrical generators in this country. In every case they have given entire satisfaction.

SEE PRICE LIST PAGE 22

Price.

- 23 20
- 2 50
- 3 35
- 3 70
- 4 15
- 3 85
- 4 15
- 4 70
- 5 35

...are fur

Price List of Dodge Special Dynamo Pulleys.

Diameter, Inches	Face, Inches													
	3	4	5	6	7	8	9	10	11	12	13	14	15	16
9	5 20	5 60	6 00	6 50	7 00	7 50	8 00	8 60	9 30	10 00	10 80	11 00	12 40	13 20
10	5 60	6 00	6 50	7 00	7 50	8 00	8 60	9 30	10 00	10 80	11 00	12 40	13 20	14 00
11	6 00	6 50	7 00	7 50	8 00	8 60	9 30	10 00	10 80	11 00	12 40	13 20	14 00	15 00
12	6 30	6 80	7 30	7 80	8 40	9 10	9 80	10 60	11 40	12 20	13 00	13 80	14 80	15 80
14	6 90	7 40	8 00	8 70	9 40	10 20	11 10	12 00	12 90	13 80	14 80	15 80	16 80	17 80
16	7 60	8 20	8 80	9 50	10 40	11 30	12 30	13 40	14 60	15 80	17 00	18 20	19 40	20 60
17	8 00	8 80	9 60	10 60	11 60	12 60	13 60	14 80	16 00	17 40	18 80	20 20	21 60	23 00
18	8 40	9 40	10 40	11 40	12 40	13 40	14 40	15 60	16 80	18 20	19 60	21 00	22 40	23 80
19	8 80	9 80	10 80	11 80	12 80	13 80	14 80	16 00	17 40	18 80	20 20	21 60	23 00	24 40
20	9 20	10 40	11 60	12 60	14 00	15 20	16 40	18 00	19 40	20 80	22 40	24 00	25 60	27 00
21	9 60	10 80	12 00	13 20	14 60	16 00	17 40	18 80	20 40	22 00	23 60	25 40	27 00	28 60
22	10 00	11 20	12 60	14 00	15 40	16 80	18 40	20 00	21 60	23 40	25 20	27 00	28 80	30 60
23	10 40	11 60	13 00	14 40	16 00	17 40	19 00	20 60	22 40	24 20	26 00	27 80	29 60	31 40
24	11 00	12 40	14 00	15 60	17 20	18 80	20 60	22 40	24 20	26 00	27 80	29 60	31 40	33 20

For Pulleys smaller than 9 inches in diameter, use list for 9-inch Pulley.

Over
for c
and
ance
style
mech
built
order

Iron Center Wood Rim Pulleys



**SINGLE OR
DOUBLE
SPIDER.
FOR
SEVERE
SERVICE
AND
HIGH SPEED**

Owing to the demand for a special, strong, compact pulley for certain service, we have placed this pulley on the market and have met with most flattering results; none of the annoyances or weak points in Iron Pulleys are found in this special style of construction. There are no shrinkage strains nor mechanical connections between arms and rim, the rim being built solidly around the arms. These pulleys are made only to order and according to specifications.

SEND FOR NET PRICES.

For Pulleys smaller than 9 inches in diameter, use list for 9-inch Pulley.

O.

35 40

33 00

30 00

25 00

20 00

15 00

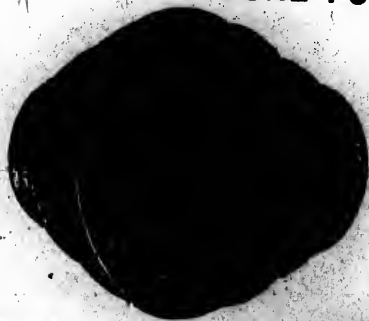
10 00

5 00

0 00

Special Pulleys.

CONE PULLEYS.



We are prepared to make Cone Pulleys with any number of steps of any diameter and width of face desired.

Prices will be the same as for a number of separate pulleys of the same diameter and width of face as the

several steps of the cone, plus fifty per cent., subject to the usual discount.

In ordering, state whether the cone should be solid or split.



FLANGE PULLEYS.



Pulleys are furnished with one, two, three or any number of flanges.

For prices of Flange Pulleys, add 15 per cent to list for one flange, 20 per cent for two flanges, 25 per cent for three flanges, and discount in the regular manner.

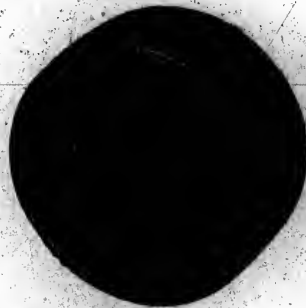
For
places
with f
the acc
rial sh
ally ad
flour m
ing a
leather

Manu
ity. Th
have n
drums
and str
Price

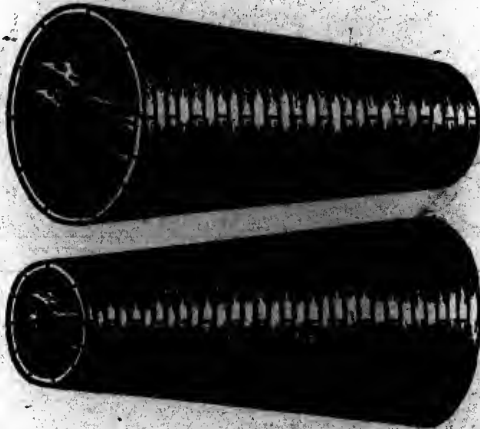
Special Pulleys.

DISC PULLEYS.

For use in dusty rooms and places where the air is filled with fibre, lint, etc., and where the accumulation of such material should be avoided. Specially adapted for laundries and flour mills as well as for polishing and buffing wheels in leather-working establishments.



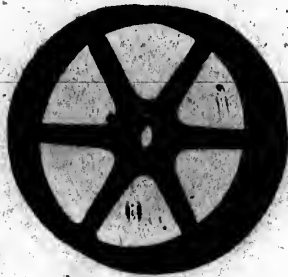
TAPER CONE PULLEYS.



Manufactured to order only and in any proportion and capacity. These cones are used largely in paper mills, for which we have manufactured a large number. We also furnish long drums for sanding and friction driving as well as for winding and stretching purposes.

Prices made on application.

Special Textile Mill Pulleys.



SOLID.



SPLIT.

Appreciating the demand for a special pulley for use in textile mills, we have taken great pains in establishing the pulley shown above and known as the Textile Mill Pulley.

This pulley has an iron spider and embraces all the advantages of both the iron and wood types. The superior belt traction of the wood rim over the iron rim is a fact beyond dispute. The light rims and spiders used in the construction of those sizes where narrow shifting belts are intended, as on looms, spinning frames, etc., make a pulley particularly neat in design. The iron spider reduces to a minimum surfaces liable to collect lint.

During the past few years we have placed thousands of these pulleys in textile mill service and always with the same result—perfect satisfaction to the user.

PRICES QUOTED ON APPLICATION.
READ OUR PULLEY GUARANTEE.

Wood Rim Fly Wheels.



ANY SIZE OR WEIGHT—FOR EITHER BELTS OR ROPES.

Our Wood Rim Fly Wheels are so constructed that shrinkage strains do not exist in the completed structure. They are suitable for high speed and are safe. Mechanical engineers are recommending this style of construction and endorse the wheel as satisfactory and soundly constructed.

SEND FOR PARTICULARS.

APPROXIMATE WEIGHTS OF THE Dodge Patent Wood Split Pulleys

The weights of our Pulleys range about as follows :

Diam.	Face.	Weight.	Diam.	Face.	Weight.	Diam.	Face.	Weight.	Diam.	Face.	Weight.
12	3	7	22	4	17	34	6	46	48	6	72
	4	8		5	21		8	58		8	94
	5	9		6	24		10	69		10	109
	7	13		8	28		12	73		12	173
	8	14		11	44		14	185		14	185
14	12	19	24	4	19	36	6	42	52	10	113
	3	8		6	27		8	60		12	152
	4	10		8	36		10	71		18	198
	6	13		10	44		12	83		20	251
	9	17		12	54		18	101			
15	10	22	26	5	26	38	6	44	54	10	127
	4	11		9	40		8	67		12	139
	5	12		12	55		10	71		18	197
	6	15		14	60		12	94		21	305
16	8	17	28	5	25	40	8	59	54	12	139
	4	12		6	34		10	71		16	197
	5	14		8	43		12	94		18	273
	6	18		10	50					21	305
	9	23		12	57						
18			30	4	23	42	8	68	60	10	147
	4	14		5	29		12	117		12	157
	5	17		6	33		18	117		18	290
	6	19		8	44		24			24	354
20	9	25	32	9	50	44	18	117	72	10	206
	3	11		10	58		7	63		12	271
	4	12		6	42		8	71		16	332
	6	21		8	51		10	73		18	354
	8	28		10	64		12	97			
20	10	35	32	12	71	46	7	63	72	10	206
	8	28		8	51		8	71		12	271
	12	41		10	64		10	73		16	332
										18	354

From any diameter up we increase size by any part of an inch in diameter or width of face and make any size up to 30 feet diameter.

DODGE PATENT SPLIT FRICTION CLUTCHES

FOR PULLEYS, SHEAVES, SPROCKETS, GEARS, ETC.

Pulleys

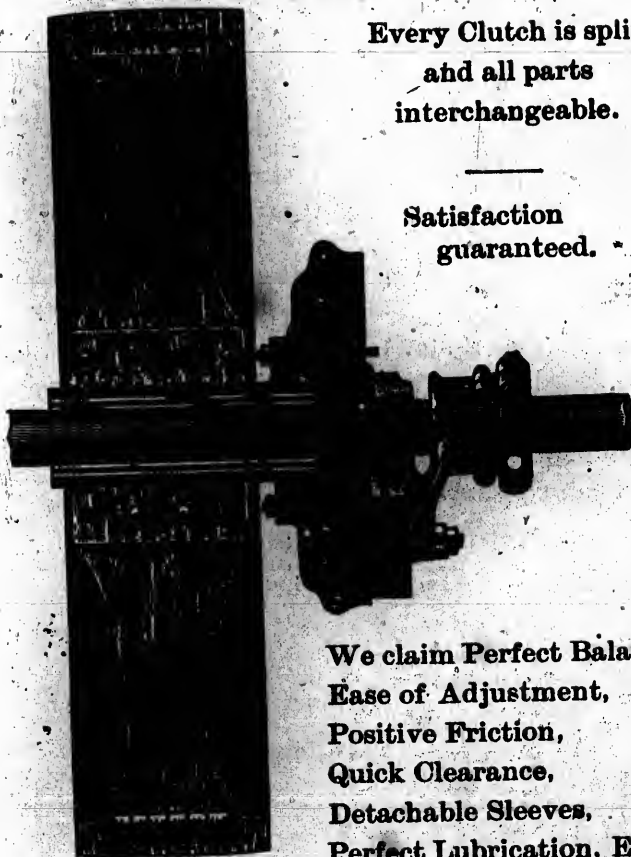
follows:

Face.	Weight.
6	72
8	94
10	109
12	173
14	185
18	205
10	113
12	152
18	198
20	251
10	127
12	139
16	197
18	273
21	305
10	147
12	157
18	290
24	354
10	206
12	271
16	332
18	354

any part of
any size

Every Clutch is split
and all parts
interchangeable.

Satisfaction
guaranteed.



We claim Perfect Balance,
Ease of Adjustment,
Positive Friction,
Quick Clearance,
Detachable Sleeves,
Perfect Lubrication, Etc.

SEND FOR PRICE.

The Friction Clutch

is fast superseding tight and loose pulleys for general line shaft service. They do away with noisy, troublesome shifters, wear and tear on belts, and save much power, owing to the fact that the belt movement is stopped at the line shaft. Belts run with Clutch Pulleys last much longer than where shifted. Our Clutch is the **only Split Clutch** on the market, and many special features included make it a strictly first-class and satisfactory Clutch. There are no trappy parts, but they are so simple that any ordinary workman can easily adjust and operate them.

By having a Split Clutch, no removals or changes are necessary to erect one on a shaft, and repairs are quickly and easily made.

We manufacture them with removable babbitted sleeves for pulleys, gears, sheaves, etc.

We guarantee complete satisfaction,

In ordering or requesting prices, state

1. Speed of Shaft.
2. Power to be transmitted.
3. Size of Pulley.
4. Size of Shaft.
5. Space obtainable on Shaft.



SEND FOR SPECIAL CLUTCH CIRCULAR.

In.

1
1 1/4
1 1/2
1 3/4
2
2 1/4
2 1/2
2 3/4
3
3 1/2
4
4 1/2
5
5 1/2
6
7
8
9
10



Leather Belting Price List.

In.	Single.	Double.	In.	Single.	Double.
1	\$0 10	\$0 20	11	\$1 42	\$2 84
1½	13	26	12	1 55	3 10
1¾	17	34	13	1 68	3 36
1½	20	40	14	1 82	3 64
2	23	46	15	1 98	3 96
2¼	26	52	16	2 14	4 28
2½	30	60	18	2 49	4 98
2¾	33	66	20	2 84	5 68
3	36	72	22	3 20	6 40
3½	43	86	24	3 54	7 08
4	50	1 00	26	3 92	7 84
4½	56	1 12	28	4 30	8 60
5	63	1 26	30	4 64	9 28
5½	70	1 40	32	5 00	10 00
6	76	1 52	34	5 35	10 70
7	90	1 80	36	5 70	11 40
8	1 02	2 04	40	6 40	12 80
9	1 15	2 30	44	7 10	14 20
10	1 29	2 58	48	7 80	15 60

Telegraph Cipher for Ordering Pulleys, Etc., by Wire.

DIAMETER.	DIAMETER.	DIAMETER.	FACE.
3 Morton.	33 Missouri.	76 Collins	9 Babbitt.
4 Rattle.	34 Fleet.	78 Carlton.	10 Tin
5 May.	35 Black.	80 Matthews.	11 Brass.
6 June.	36 White.	82 Beemer.	12 Steel.
7 July.	37 Rater.	84 Reed.	13 Banca.
8 August.	38 Shine.	86 Shively.	14 Krupp.
9 Planter.	39 Morse.	88 Lyons.	15 Antimony.
10 Hamlet.	40 Phillion.	90 Irvin.	16 Platina.
11 Southern.	41 Roy.	92 Woods.	17 Steam.
12 Fly.	42 Slate.	94 Fonda.	18 Water.
13 Trip.	43 Long.	96 Tridle.	19 Vapor.
14 Hudson.	44 Lesh.	100 Berry.	20 Glue.
15 Indus.	45 Smith.	102 London.	21 Turp.
16 Orton.	46 Grise.	104 Cooke.	22 Naphtha.
17 Lake.	47 Brown.	106 Cannon.	23 Alcohol.
18 Miami.	48 Bliss.	108 Taylor.	24 Maple.
19 Niles.	49 Thayer.	114 Fairbanks.	25 Walnut.
20 Osage.	50 Endlich.	120. Keno.	26 Sycamore.
21 Potomac.	52 Wallon.	1/2 Dun.	27 Ash.
22 Rhine.	54 Ward.		28 Oak.
23 Morgan.	56 Gore.		30 Elm.
24 Tweed.	58 Bright.		32 Butternut.
25 Front.	60 Crocker.		34 Hickory.
26 Bass.	62 Morley.	2 Oil	36 Chestnut.
27 Sash.	64 West.	3 Lead.	38 Cherry.
28 Flake.	66 Calif.	4 Gold.	40 Cypress.
29 Blast.	68 Kimball.	5 Silver.	42 Cedar.
30 Judd.	70 Tang.	6 Copper.	44 Beech.
31 Johnson.	72 Wadhams.	7 Iron.	48 Rose.
32 Salem.	74 Reynolds.	8 Vesey.	1/2 Simon.

FACE.

SPECIAL ITEMS.

Crown face	David.
Straight face	Solomon.
One pair tight and loose	Cleveland.
Loose pulley with iron sleeve	Washington.
Pulleys with discs	Disc.
Dynamo pulleys	Dynamo.
Extra heavy and strong	Sampson.
Single flange	Ruth.
Double flange	Rebecca.

BUSHINGS.

OUTSIDE DIAMETER.		LENGTH.
2 inch	Mary.	5 Wilson.
2 7-16 inch	Edna.	6 Wheeler.
3 inch	Ida.	7 Singer.
3 1/2 inch	Nora.	8 Hoeford.
4 inch	Carrie.	10 Fry.
		12 Bissell.
		14 Pine.
		16 Milton.
		18 Enterprise.
		20 Gazette.

Telegra

15-16 K	
1	P
1 1-16 T	
1 1-8 R	
1 3-16 N	
1-4 B	
1 5-16 N	
1 3-8 N	
1 7-16 M	
1 1-2 H	
1 9-16 N	
1 5-8 D	
1 11-16 B	
1 3-4 A	
1 13-16 B	
1 7-8 C	
1 15-16 D	
2	Eg
2 1-16 F	
2 1-8 F	
2 3-16 G	
2 1-4 H	
2 5-16 S	
2 3-8 I	
2 7-16 J	
2 1-2 K	
2 9-16 S	
2 5-8 M	
2 11-16 N	
2 3-4 O	
2 13-16 P	
2 7-8 R	

14 Hu
5-16 Isa
3-8 Jac
7-16 Job
1-2 Ber
9-16 Zell
5-8 Han
11-16 Hur
3-4 Ker
13-16 Edi

IRO

Solid, Sing
Split, Sing
Use Wood

Telegraph Cipher for Ordering Pulleys, Etc., by Wire—Con.

FOR BORE OR SIZE OF SHAFT.

FACE.

Babbitt.
Tin
Brass.
Steel.
Banca.
Krupp.
Antimony.
Platina.
Steam.
Water.
Vapor.
Glue.
Gurp.
Naphtha.
Alcohol.
Maple.
Walnut.
Sycamore.
Ash.
Oak.
Elm.
Butternut.
Hickory.
Chestnut.
Cherry.
Spruce.
Pedar.
Peech.
Pine.
Limon.

15-16 Kepler.
1 Peck.
1 1-16 Twain.
1 1-8 Read.
1 3-16 Nye.
1-1-4 Burdett.
1 5-16 Nest.
1 3-8 Nally.
1 7-16 Moran.
1 1-2 Haswell.
1 9-16 Newman.
1 5-8 Dennis.
1 11-16 Butler.
1 3-4 Asia.
1 13-16 Belgium.
1 7-8 Chili.
1 15-16 Denmark.
2 Egypt.
2 1-16 Freeman.
2 1-8 France.
2 3-16 Germany.
2 1-4 Holland.
2 5-16 Scotland.
2 3-8 Ireland.
2 7-16 Japan.
2 1-2 Kentucky.
2 9-16 Siberia.
2 5-8 Maine.
2 11-16 Nevada.
2 3-4 Ohio.
2 13-16 Peru.
2 7-8 Russia.

2 15-16 Spain.
3 Texas.
3 1-16 Honduras.
3 1-8 Alleghany.
3 3-16 Baltimore.
3 1-4 Camden.
3 5-16 Boston.
3 3-8 Warner.
3 7-16 Detroit.
3 1-2 Erie.
3 9-16 Fairmont.
3 5-8 Parkside.
3 11-16 Galena.
3 3-4 Harrisburg.
3 13-16 Ithica.
3 7-8 Jamestown.
3 15-16 Kensington.
4 Lancaster.
4 1-16 Woodlawn.
4 1-8 Macon.
4 3-16 Quincy.
4 1-4 Newark.
4 5-16 Oneida.
4 3-8 Rome.
4 7-16 Paris.
4 1-2 Reading.
4 9-16 Lisbon.
4 5-8 Madrid.
4 11-16 Florence.
4 3-4 Troy.
4 13-16 Amazon.
4 7-8 Bay.

4 15-16 Colorado.
5 Danube.
5 1-16 Milan.
5 1-8 Metz.
5 3-16 Moscow.
5 1-4 Elbe.
5 5-16 Glasgow.
5 3-8 Quebec.
5 7-16 Ottawa.
5 1-2 Kingston.
5 9-16 Montreal.
5 5-8 Manitoba.
5 11-16 Winnipeg.
5 3-4 Alaska.
5 13-16 Toronto.
5 7-8 Portland.
5 15-16 Norway.
6 Sweden.
6 1-4 China.
6 1-2 India.
6 3-4 Australia.
7 Burmah.
7 1-4 Arabia.
7 1-2 Muscovy.
7 3-4 Siam.
8 Palestine.
8 1-2 Tunis.
9 Morocco.
1-32 in. Addit'nal Cain
1-64 in. Addit'nal Abel
3-64 in. Addit'nal Eve.

KEY WAYS.

1-4 Hugo.
5-16 Isaac.
3-8 Jacob.
7-16 John.
1-2 Bertha.
9-16 Zella.
5-8 Hanna.
11-16 Hunt.
3-4 Kenyon.
13-16 Edith.

7-8 George.
15-16 Jesse.
1 Allen.
1 1-16 Thomas.
1 1-8 Stephen.
1 3-16 Grace.
1 1-4 Fred.
1 5-16 Walter.
1 3-8 Quigg.
1 7-16 Charles.

1 1-2 Frank.
1 9-16 Horace.
1 5-8 Barnes.
1 11-16 Helen.
1 3-4 Lena.
1 13-16 Luke.
1 7-8 Mark.
1 15-16 Edward.
2 Henry.

IRON CENTER WOOD RIM PULLEYS.

Code Word Solid, Single Spider. Category | *Code Word* Solid, Double Spider. Constical
Split, Single Spider. Cathedral | Split, Double Spider. Cavern
Use Wood Pulley Cipher for diameter, face bore and key-seat.

WEIGHT AND STRENGTH OF MANILA ROPE.

Size Diam. Inches.	Weight of 100 Fathoms Manila in Lbs.	Strain Borne by New Rope Pounds.	Feet in a Pound.
$\frac{3}{8}$ in.	12	540	50 feet.
$\frac{1}{2}$ "	18	780	33 " 4 in.
$\frac{5}{8}$ "	24	1,000	25 " "
$\frac{3}{4}$ "	30	1,280	20 " "
$\frac{7}{8}$ "	37	1,562	17 " 8 "
1 "	46	2,250	13 " "
$1\frac{1}{8}$ "	65	3,062	9 " 3 "
$1\frac{1}{4}$ "	80	4,000	7 " 6 "
$1\frac{3}{8}$ "	98	5,000	6 " "
$1\frac{1}{2}$ "	120	6,250	5 " "
$1\frac{5}{8}$ "	142	7,500	4 " 8 "
1 1/8 "	170	9,000	3 " 6 "
$1\frac{3}{4}$ "	200	10,500	3 " "
$1\frac{7}{8}$ "	230	12,250	2 " 7 "
$1\frac{1}{2}$ "	271	14,000	2 " 3 "
$1\frac{5}{8}$ "	310	16,000	1 " 11 "
$1\frac{3}{4}$ "	346	18,062	1 " 8 "
$1\frac{7}{8}$ "	390	20,250	1 " 6 "
$1\frac{1}{2}$ "	435	22,500	1 " 5 "
$1\frac{5}{8}$ "	480	25,000	1 " 3 "
$1\frac{3}{4}$ "	581	30,250	1 " "
2 "	678	36,000	$10\frac{2}{3}$ "

Rules for Calculating the Speed of Drums or Pulleys.

PROBLEM I.—The diameter of the Driver and Driven being given, to find the number of revolutions of the Driven:

RULE.—Multiply the diameter of the Driver by the number of revolutions, and divide the product by the diameter of the Driven; the quotient will be the number of revolutions of the Driven.

PROBLEM II.—The diameter and revolutions of the Driver being given to find the diameter of the Driven, that shall make any given number of revolutions the same time:

RULE.—Multiply the diameter of the Driver by its number of revolutions, and divide the product by the number of revolutions of the Driven; the quotient will be the diameter of the Driven.

PROBLEM III.—To ascertain the size of the Driver:

RULE.—Multiply the diameter of the Driven by the number of revolutions you wish it to make, and divide the product by the revolutions of the Driver; the quotient will be the size of the Driver.

ROPE.

In a
nd.

et.
4 in.

8 "

3 "

6 "

8 "

6 "

7 "

3 "

11 "

8 "

6 "

5 "

3 "

0²/₃ "

ulleys.

Driven
riven :
umber
of the
s of the

Driver
t shall

umber of
t revo-
of the

umber
uct by
size of

DODGE MANUFACTURING CO.

Power Transmission Specialties and Power Drive Applications

Among the most important and valuable specialties are

INDUSTRIAL POWER TRANSMISSIONS — **DRIVING WITH FLEXIBILITY**

DRIVING WITH FLEXIBILITY — **DRIVING WITH FLEXIBILITY**

DRIVING WITH FLEXIBILITY — **DRIVING WITH FLEXIBILITY**

DRIVING WITH FLEXIBILITY — **DRIVING WITH FLEXIBILITY**

DRIVING WITH FLEXIBILITY — **DRIVING WITH FLEXIBILITY**

DODGE MANUFACTURING CO.

DRIVING WITH FLEXIBILITY — **DRIVING WITH FLEXIBILITY**

DRIVING WITH FLEXIBILITY — **DRIVING WITH FLEXIBILITY**

DRIVING WITH FLEXIBILITY — **DRIVING WITH FLEXIBILITY**

DRIVING WITH FLEXIBILITY — **DRIVING WITH FLEXIBILITY**

DRIVING WITH FLEXIBILITY — **DRIVING WITH FLEXIBILITY**

DRIVING WITH FLEXIBILITY — **DRIVING WITH FLEXIBILITY**

DRIVING WITH FLEXIBILITY — **DRIVING WITH FLEXIBILITY**

DRIVING WITH FLEXIBILITY — **DRIVING WITH FLEXIBILITY**

DRIVING WITH FLEXIBILITY — **DRIVING WITH FLEXIBILITY**

DRIVING WITH FLEXIBILITY — **DRIVING WITH FLEXIBILITY**

DRIVING WITH FLEXIBILITY — **DRIVING WITH FLEXIBILITY**

DRIVING WITH FLEXIBILITY — **DRIVING WITH FLEXIBILITY**

DRIVING WITH FLEXIBILITY — **DRIVING WITH FLEXIBILITY**

DRIVING WITH FLEXIBILITY — **DRIVING WITH FLEXIBILITY**

DRIVING WITH FLEXIBILITY — **DRIVING WITH FLEXIBILITY**

DRIVING WITH FLEXIBILITY — **DRIVING WITH FLEXIBILITY**

DRIVING WITH FLEXIBILITY — **DRIVING WITH FLEXIBILITY**

DRIVING WITH FLEXIBILITY — **DRIVING WITH FLEXIBILITY**

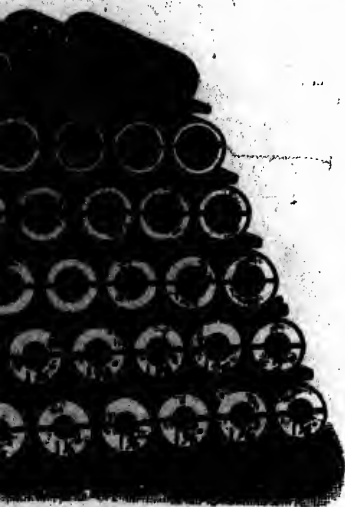
DRIVING WITH FLEXIBILITY — **DRIVING WITH FLEXIBILITY**

DRIVING WITH FLEXIBILITY — **DRIVING WITH FLEXIBILITY**

**TENT STANDARDIZED
Bushings System.**

our Wood Split Pulleys to a large
th our patent Standardized Wood
may be utilized to fit shafts of vari-

ed Wood Bushings, made from elas-
allow the bushing to conform to the
nd in commercial shafting, is origi-
in both the United States and Can-
and controlled by us exclusively.



ft sizes to which a standard 3/4-
d—advancing from 1-inch shaft

**The Dodge Patent Standardized Wood Split
Bushings System.**

EXPLANATION—For stock, we make all pulleys in size from 24 in. diameter and upwards with bore for 3 1/2 in. shaft, and all pulleys below 24 in. in diameter for 3 in. shaft (excepting cases where larger bore is required). Each pulley is furnished with one wood bushing to fit any size shaft wanted, thus enabling manufacturers to make changes from one line of shafting to another of different size, and utilize the pulleys on hand; also enabling dealers (ourselves as well) to fill orders promptly by simply carrying in stock a full assortment of bushings. Can make any one pulley fit forty or more sizes of shafting. Thus, with a moderate stock of pulleys, orders can be filled at once and without delay, which frequently costs many times more than the pulleys themselves. This system enables a dealer (with say one-fortieth of the stock of the ordinary pulleys bored to fit one size of shaft) to fill more orders and with greater dispatch, thereby saving a large investment in pulleys and a large amount of storage room.



NOTE.—This system is also subject to our special guarantee on page 2

Price List for Extra Wood Bushings.

LENGTH.	OUTSIDE DIAMETER IN INCHES.				
	2 & 2 7-16	3	3 1/2	4	4 1/2
6 to 8 inches	25	30	35	45	60
10 to 12 inches	30	35	40	50	70
14 to 16 inches	35	40	45	60	80
18 to 20 inches		45	55	70	90

Subject to same discount as pulleys. Net prices will be quoted on application for bushings of larger dimensions.

WORLD'S GREATEST JUNCTION.

