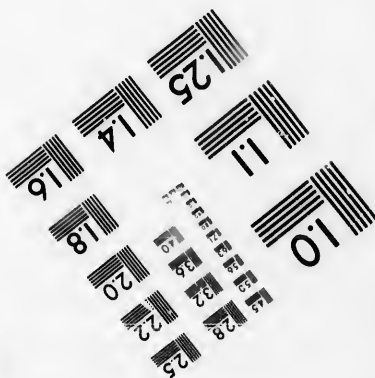
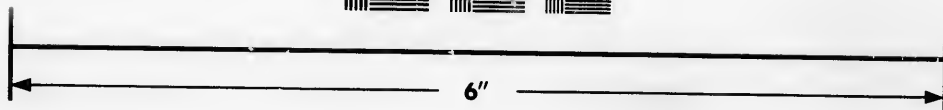
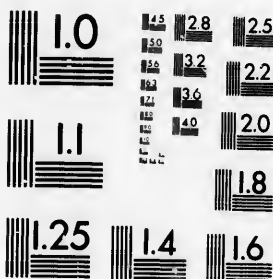


**IMAGE EVALUATION
TEST TARGET (MT-3)**



**Photographic
Sciences
Corporation**

23 WEST MAIN STREET
WEBSTER, N.Y. 14580
(716) 872-4503

28
25
22
20
18

**CIHM/ICMH
Microfiche
Series.**

**CIHM/ICMH
Collection de
microfiches.**



Canadian Institute for Historical Microreproductions / Institut canadien de microreproductions historiques

10

© 1986

Technical and Bibliographic Notes/Notes techniques et bibliographiques

The Institute has attempted to obtain the best original copy available for filming. Features of this copy which may be bibliographically unique, which may alter any of the images in the reproduction, or which may significantly change the usual method of filming, are checked below.

L'Institut a microfilmé le meilleur exemplaire qu'il lui a été possible de se procurer. Les détails de cet exemplaire qui sont peut-être uniques du point de vue bibliographique, qui peuvent modifier une image reproduite, ou qui peuvent exiger une modification dans la méthode normale de filmage sont indiqués ci-dessous.

- | | |
|--|--|
| <input type="checkbox"/> Coloured covers/
Couverture de couleur | <input checked="" type="checkbox"/> Coloured pages/
Pages de couleur |
| <input type="checkbox"/> Covers damaged/
Couverture endommagée | <input type="checkbox"/> Pages damaged/
Pages endommagées |
| <input type="checkbox"/> Covers restored and/or laminated/
Couverture restaurée et/ou pelliculée | <input type="checkbox"/> Pages restored and/or laminated/
Pages restaurées et/ou pelliculées |
| <input type="checkbox"/> Cover title missing/
Le titre de couverture manque | <input type="checkbox"/> Pages discoloured, stained or foxed/
Pages décolorées, tachetées ou piquées |
| <input type="checkbox"/> Coloured maps/
Cartes géographiques en couleur | <input type="checkbox"/> Pages detached/
Pages détachées |
| <input type="checkbox"/> Coloured ink (i.e. other than blue or black)/
Encre de couleur (i.e. autre que bleue ou noire) | <input checked="" type="checkbox"/> Showthrough/
Transparence |
| <input type="checkbox"/> Coloured plates and/or illustrations/
Planches et/ou illustrations en couleur | <input type="checkbox"/> Quality of print varies/
Qualité inégale de l'impression |
| <input type="checkbox"/> Bound with other material/
Relié avec d'autres documents | <input type="checkbox"/> Includes supplementary material/
Comprend du matériel supplémentaire |
| <input type="checkbox"/> Tight binding may cause shadows or distortion
along interior margin/
La reliure serrée peut causer de l'ombre ou de la
distorsion le long de la marge intérieure | <input type="checkbox"/> Only edition available/
Seule édition disponible |
| <input type="checkbox"/> Blank leaves added during restoration may
appear within the text. Whenever possible, these
have been omitted from filming/
il se peut que certaines pages blanches ajoutées
lors d'une restauration apparaissent dans le texte,
mais, lorsque cela était possible, ces pages n'ont
pas été filmées. | <input type="checkbox"/> Pages wholly or partially obscured by errata
slips, tissues, etc., have been refilmed to
ensure the best possible image/
Les pages totalement ou partiellement
obscurcies par un feuillet d'errata, une pelure,
etc., ont été filmées à nouveau de façon à
obtenir la meilleure image possible. |
| <input checked="" type="checkbox"/> Additional comments:/ [Printed ephemera] 1 sheet (verso blank)
Commentaires supplémentaires: | |

This item is filmed at the reduction ratio checked below/
Ce document est filmé au taux de réduction indiqué ci-dessous.

10X	14X	18X	22X	26X	30X
<input type="checkbox"/>	<input type="checkbox"/>	<input type="checkbox"/>	<input checked="" type="checkbox"/>	<input type="checkbox"/>	<input type="checkbox"/>
12X	16X	20X	24X	28X	32X

The copy filmed here has been reproduced thanks to the generosity of:

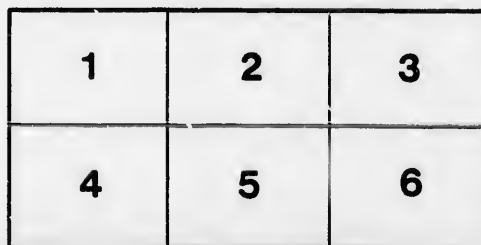
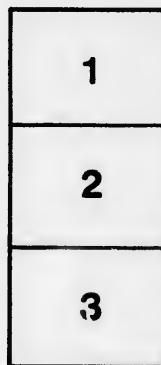
Seminary of Quebec
Library

The images appearing here are the best quality possible considering the condition and legibility of the original copy and in keeping with the filming contract specifications.

Original copies in printed paper covers are filmed beginning with the front cover and ending on the last page with a printed or illustrated impression, or the back cover when appropriate. All other original copies are filmed beginning on the first page with a printed or illustrated impression, and ending on the last page with a printed or illustrated impression.

The last recorded frame on each microfiche shall contain the symbol \rightarrow (meaning "CONTINUED"), or the symbol ∇ (meaning "END"), whichever applies.

Maps, plates, charts, etc., may be filmed at different reduction ratios. Those too large to be entirely included in one exposure are filmed beginning in the upper left hand corner, left to right and top to bottom, as many frames as required. The following diagrams illustrate the method:



L'exemplaire filmé fut reproduit grâce à la générosité de:

Séminaire de Québec
Bibliothèque

Les images suivantes ont été reproduites avec le plus grand soin, compte tenu de la condition et de la netteté de l'exemplaire filmé, et en conformité avec les conditions du contrat de filmage.

Les exemplaires originaux dont la couverture en papier est imprimée sont filmés en commençant par le premier plat et en terminant soit par la dernière page qui comporte une empreinte d'impression ou d'illustration, soit par le second plat, selon le cas. Tous les autres exemplaires originaux sont filmés en commençant par la première page qui comporte une empreinte d'impression ou d'illustration et en terminant par la dernière page qui comporte une telle empreinte.

Un des symboles suivants apparaîtra sur la dernière image de chaque microfiche, selon le cas: le symbole \rightarrow signifie "A SUIVRE", le symbole ∇ signifie "FIN".

Les cartes, planches, tableaux, etc., peuvent être filmés à des taux de réduction différents. Lorsque le document est trop grand pour être reproduit en un seul cliché, il est filmé à partir de l'angle supérieur gauche, de gauche à droite, et de haut en bas, en prenant le nombre d'images nécessaire. Les diagrammes suivants illustrent la méthode.

1 Nov 1860

PASTORAL LETTER.

JOHN JOSEPH LYNCH, BY THE GRACE OF GOD AND THE APPOINTMENT OF THE HOLY SEE, BISHOP OF TORONTO:

TO THE VENERABLE CLERGY AND BELOVED LAITY OF THE DIOCESE,

GRACE AND BENEDICTION:

Whilst the heart of the whole Catholic world beats with profound sympathy for our Holy Father, in the recent outrages heaped on him as Head of the Church and Guardian of its Patrimony, and whilst the Faithful run with signal unanimity to deposit at his feet noble offerings to alleviate his pecuniary embarrassments, You, Beloved Brethren, We are sure, are also eager to join in their pious demonstrations. If We have thus far delayed giving you an opportunity of doing so, it was that you might be enabled, after an abundant harvest, to make your offerings more worthy of your pious generosity, and more in keeping with their august object.

The recent evils which have swept in a destructive tide over the Patrimony of St. Peter, and have stirred all generous hearts with just indignation against their infamous authors, make the present an appropriate occasion to come to the aid of our Holy Father, and imperatively require us to give a substantial proof of our affection to him. It is enough for us to know that our dear and Holy Father is in distress, to cause us to offer him the little assistance in our power. Some noble souls have magnanimously given up their lives in his holy and just cause, and shall not we hasten to give some of our worldly goods for the same end?

The sacrilegious and unjust plundering invasion of the Pontifical territory has been carried on by an excommunicated Royal filibuster and vile mercenary followers, who have everything to gain by war, and nothing to lose, aided and abetted by a false friend, the worthy nephew of the persecutor and betrayer of Popes. He, whilst holding out vain hopes of protection, wilfully flattered the Catholic world into the belief that the Patrimony of St. Peter was safe, until the alien banditti of his accomplice had actually got possession of provinces which might have been saved from their sacrilegious grasp had the Catholic Powers suspected the danger.

We hoped that at least Napoleon III. had read history and the fate of sacrilege with profit, and that he would have been restrained from prosecuting his Italian programme, by even a love of perpetuating his name on the French throne in the one slender hope vouchsafed to him by a benign Providence, as an encouragement for his good beginnings. But, alas! ambition—the fatal star of his uncle—has thrown already a dark, lurid glare over the horizon of this self-doomed and vacillant dynasty.

The dejected Italians are experiencing already that their wild hunt after liberty and fortune is ending in bitter disappointment. Exorbitant taxations and the mob rule of vicious men will soon make them long to be received as servants in their Father's house.

Reverend Pastors will please form Committees to take up Subscriptions, which will be sent to Us as soon as possible, together with the names of the donors, that they may be enregistered and sent to Rome.

The Faithful will likewise continue to pray fervently for our Holy Father; and the Rev. Pastors will also continue the prayer *Pro Papa* at Mass, till otherwise directed, together with the three *Paters* and *Aves* after Parochial Mass on Sundays.

This Pastoral shall be read by the Rev. Clergy to their respective Flocks on the first Sunday after its reception.

Given at St. Michael's, on the Octave Day of All Saints, 1860.

† JOHN JOSEPH,

Bishop of Toronto.

By order of His Lordship,

GEORGE R. NORTHGRAVES, Pr.,

Secretary.

