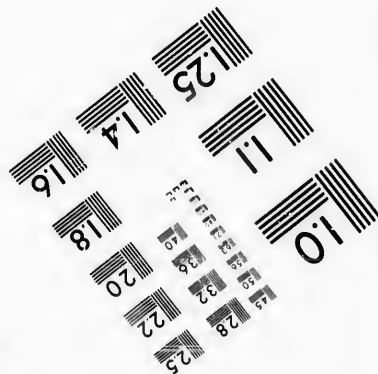
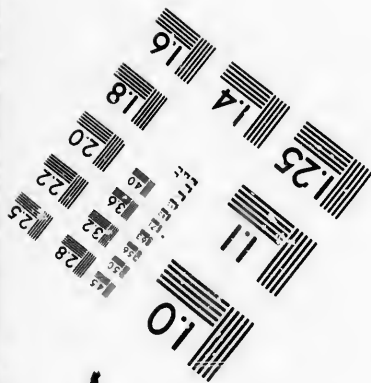
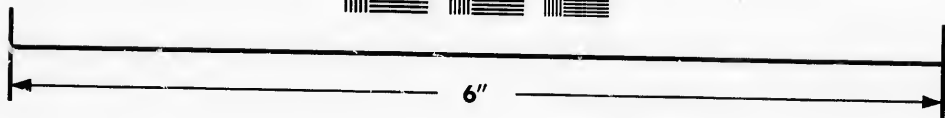
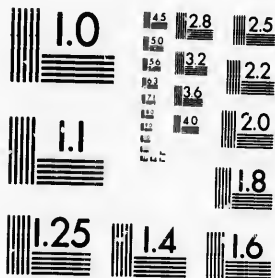


**IMAGE EVALUATION  
TEST TARGET (MT-3)**



**Photographic  
Sciences  
Corporation**

23 WEST MAIN STREET  
WEBSTER, N.Y. 14580  
(716) 872-4503

**CIHM/ICMH  
Microfiche  
Series.**

**CIHM/ICMH  
Collection de  
microfiches.**



Canadian Institute for Historical Microreproductions / Institut canadien de microreproductions historiques

**© 1986**

Technical and Bibliographic Notes/Notes techniques et bibliographiques

The Institute has attempted to obtain the best original copy available for filming. Features of this copy which may be bibliographically unique, which may alter any of the images in the reproduction, or which may significantly change the usual method of filming, are checked below.

L'Institut a microfilmé le meilleur exemplaire qu'il lui a été possible de se procurer. Les détails de cet exemplaire qui sont peut-être uniques du point de vue bibliographique, qui peuvent modifier une image reproduite, ou qui peuvent exiger une modification dans la méthode normale de filmage sont indiqués ci-dessous.

- |  |  |
|--|--|
| <input type="checkbox"/> Coloured covers/<br>Couverture de couleur   | <input type="checkbox"/> Coloured pages/<br>Pages de couleur   |
| <input type="checkbox"/> Covers damaged/<br>Couverture endommagée  | <input type="checkbox"/> Pages damaged/<br>Pages endommagées   |
| <input type="checkbox"/> Covers restored and/or laminated/<br>Couverture restaurée et/ou pelliculée  | <input type="checkbox"/> Pages restored and/or laminated/<br>Pages restaurées et/ou pelliculées  |
| <input type="checkbox"/> Cover title missing/<br>Le titre de couverture manque   | <input checked="" type="checkbox"/> Pages discoloured, stained or foxed/<br>Pages décolorées, tachetées ou piquées   |
| <input type="checkbox"/> Coloured maps/<br>Cartes géographiques en couleur   | <input type="checkbox"/> Pages detached/<br>Pages détachées  |
| <input type="checkbox"/> Coloured ink (i.e. other than blue or black)/<br>Encre de couleur (i.e. autre que bleue ou noire)   | <input checked="" type="checkbox"/> Showthrough/<br>Transparence   |
| <input type="checkbox"/> Coloured plates and/or illustrations/<br>Planches et/ou illustrations en couleur  | <input type="checkbox"/> Quality of print varies/<br>Qualité inégale de l'impression   |
| <input type="checkbox"/> Bound with other material/<br>Relié avec d'autres documents   | <input type="checkbox"/> Includes supplementary material/<br>Comprend du matériel supplémentaire   |
| <input type="checkbox"/> Tight binding may cause shadows or distortion<br>along interior margin/<br>La reliure serrée peut causer de l'ombre ou de la<br>distorsion le long de la marge intérieure   | <input type="checkbox"/> Only edition available/<br>Seule édition disponible   |
| <input type="checkbox"/> Blank leaves added during restoration may<br>appear within the text. Whenever possible, these<br>have been omitted from filming/<br>Il se peut que certaines pages blanches ajoutées<br>lors d'une restauration apparaissent dans le texte,<br>mais, lorsque cela était possible, ces pages n'ont<br>pas été filmées. | <input type="checkbox"/> Pages wholly or partially obscured by errata<br>slips, tissues, etc., have been refilmed to<br>ensure the best possible image/<br>Les pages totalement ou partiellement<br>obscurcies par un feuillet d'errata, une pelure,<br>etc., ont été filmées à nouveau de façon à<br>obtenir la meilleure image possible. |
| <input checked="" type="checkbox"/> Additional comments:/ [Printed ephemera] [4] p.<br>Commentaires supplémentaires:   |  |

This item is filmed at the reduction ratio checked below/  
Ce document est filmé au taux de réduction indiqué ci-dessous.

|                          |                          |                          |                          |                                     |                          |
|--------------------------|--------------------------|--------------------------|--------------------------|-------------------------------------|--------------------------|
| 10X                      | 14X                      | 18X                      | 22X                      | 26X                                 | 30X                      |
| <input type="checkbox"/> | <input type="checkbox"/> | <input type="checkbox"/> | <input type="checkbox"/> | <input checked="" type="checkbox"/> | <input type="checkbox"/> |
| 12X                      | 16X                      | 20X                      | 24X                      | 28X                                 | 32X                      |

The copy filmed here has been reproduced thanks to the generosity of:

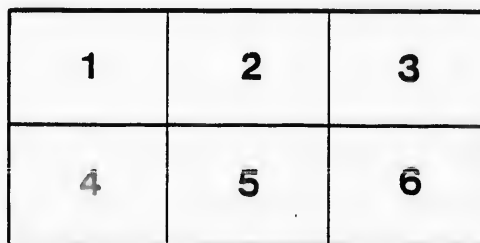
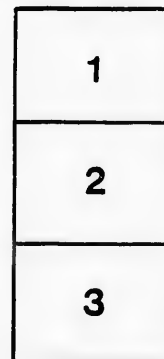
D. B. Weldon Library  
University of Western Ontario  
(Regional History Room)

The images appearing here are the best quality possible considering the condition and legibility of the original copy and in keeping with the filming contract specifications.

Original copies in printed paper covers are filmed beginning with the front cover and ending on the last page with a printed or illustrated impression, or the back cover when appropriate. All other original copies are filmed beginning on the first page with a printed or illustrated impression, and ending on the last page with a printed or illustrated impression.

The last recorded frame on each microfiche shall contain the symbol  $\rightarrow$  (meaning "CONTINUED"), or the symbol  $\nabla$  (meaning "END"), whichever applies.

Maps, plates, charts, etc., may be filmed at different reduction ratios. Those too large to be entirely included in one exposure are filmed beginning in the upper left hand corner, left to right and top to bottom, as many frames as required. The following diagrams illustrate the method:



L'exemplaire filmé fut reproduit grâce à la générosité de:

D. B. Weldon Library  
University of Western Ontario  
(Regional History Room)

Les images suivantes ont été reproduites avec le plus grand soin, compte tenu de la condition et de la netteté de l'exemplaire filmé, et en conformité avec les conditions du contrat de filmage.

Les exemplaires originaux dont la couverture en papier est imprimée sont filmés en commençant par le premier plat et en terminant soit par la dernière page qui comporte une empreinte d'impression ou d'illustration, soit par le second plat, selon le cas. Tous les autres exemplaires originaux sont filmés en commençant par la première page qui comporte une empreinte d'impression ou d'illustration et en terminant par la dernière page qui comporte une telle empreinte.

Un des symboles suivants apparaîtra sur la dernière image de chaque microfiche, selon le cas: le symbole  $\rightarrow$  signifie "A SUIVRE", le symbole  $\nabla$  signifie "FIN".

Les cartes, planches, tableaux, etc., peuvent être filmés à des taux de réduction différents. Lorsque le document est trop grand pour être reproduit en un seul cliché, il est filmé à partir de l'angle supérieur gauche, de gauche à droite, et de haut en bas, en prenant le nombre d'images nécessaire. Les diagrammes suivants illustrent la méthode.

MICHIGAN, OHIO  
 CANADIAN CIRCUIT  
 EIGHTEEN  
 THEATRES

CLEVELAND, CINCINNATI, BUFFALO,  
 DETROIT, TORONTO,  
 TOLEDO, LONDON, HAMILTON,  
 WOODSTOCK, BAGINAW,  
 GRAND RAPIDS, BAY CITY AND  
 JACKSON.



**Grand**  
**OPERA HOUSE**  
**London.**

C. J. WHITNEY. A. E. ROOTE. ONTARIO.  
 LESSEE. MANAGER.



W. SMITH.

E. HOLLAND.

W. S. PARTRIDGE.

**SMITH & BROS.**

THE  
 LEADING  
 SANITARY  
 PLUMBERS  
 AND  
 HEATING  
 ENGINEERS  
 OF  
 WESTERN  
 ONTARIO.

376  
 RICHMOND STREET,

**LONDON.**

OPPOSITE GRAND OPERA HOUSE BUILDING.

A full stock of Supplies always on hand.

TELEPHONE 538.

LADIES! THE ONLY WAY TO GET HELP IS THROUGH THE "FREE PRESS" WANT COLUMN.



**Parisian  
Steam  
Laundry**

73 & 75 DUNDAS STREET.

BRANCH OFFICES:

226 Dundas St. 753 Waterloo. 410 Hamilton Rd.  
480 " " 577 Full Mall. 211 Wellington.  
310 " " 396 Richmond. 338 Ridout.  
632 " " 485

J. K. SPRY, Manager.

**HUESTON'S**

**LIVERY,  
Goupe & Cab Stables**  
WELLINGTON STREET.

Finest Horses and Carriages in the City.  
OPEN DAY AND NIGHT. TELEPHONE 441.

**ROBT. HUESTON,**  
Proprietor.

**H. McKENNA,**

—FOR—  
**Choice Cigars, Tobaccos**  
AND PIPES.

ALWAYS OPEN .....  
..... AFTER THE OPERA.

225 DUNDAS STREET.

**SPRING**



1894.

WE have just received the finest assortment of Spring Hats ever shown in the city. We are leaders for correct shapes, try us. A pleasure to show goods.

**Rivard**

LONDON'S FASHIONABLE HATTER AND FURRIER .....  
**400 RICHMOND STREET.**

**WILLIAMS' Pianos** CANADA'S FAVORITE

Cannot be excelled for touch, singing quality, delicacy and great power of tone, with highest excellence of workmanship.

ALL THE LATEST VOCAL AND INSTRUMENTAL MUSIC RECEIVED AS PUBLISHED.

Musical Instruments of all kinds, Strings and Fittings AT LOWEST PRICES.

**R. S. WILLIAMS & SON,** 171 DUNDAS STREET, LONDON, ONT.  
J. A. CRODEN, Manager.

**PROGRAMME**

Monday, April 2nd.

The New York, London, and Paris success,

**GLORIANA**

WITH

**Emily Bancker**

AND COMPANY OF  
COMEDIANS

Under the direction of THOS. W. RYLEY.

The Performance will commence with the One-Act Play,

**SWEET  
WILL**

By Henry Arthur Jones,

Author of "The Middleman," "The Dancing Girl," "Saints and Sinners."

(Programme continued on next page.)

**SOMETHING NEW.**

Opera English & Canadian  
Caramels. Chocolate Creams.

VERY FINEST French Crystalized FRUITS. Olives in Bulk.  
.. Fresh Roquefort Cheese..

**FITZGERALD, SCANDRETT & CO.**  
169 Dundas Street.

ESTABLISHED 1831.

**H. DAVIS & SON,  
WATCHMAKERS  
AND  
JEWELLERS**

DEALERS IN  
Watches, Clocks, Jewellery, Spectacles,  
Silver Plated Ware, &c.

170 DUNDAS ST., LONDON, ONT.

**W. T. STRONG**

Dispensing  
Chemist,

184 Dundas Street,  
LONDON, - ONTARIO.

**BROWN,**



145 Dundas Street.

OUR aim has been to steadily increase our business by the excellence of our goods and the low price at which we sell them; and we are pleased to tell our patrons that we have succeeded beyond our highest expectations. The reputation enjoyed by Brown's Shoe Store as the leader in .....

First-Class, Stylish, Fine Footwear  
..... has been well earned.

Our 1894 Spring and Summer Stock will contain all the Latest Designs from the leading American and Canadian Houses, and will combine the Novel with the Serviceable.

THE FOLLOWING ARE SOME OF OUR NEWEST—  
FOR LADIES:

"The Prince Edna," "Lapelle," "Eugene"  
"Jacquette," "Eulalia," "Summer" (six large buttons), "Blucerette,"  
"White Stitched Oxford, with French Heel" (very pretty).

FOR GENTLEMEN:

"New York Razor Toe Wing Tip,"  
IN PATENT AND TAN.  
"Abington," Turned Sole Bal.  
(A VERY NICE DRESS SHOE.)  
"Harvard," Calf Bal.,  
IN TAN AND BLACK.  
"Opera," "Bon-Ton," "Old London."

We have also full lines of staple goods of the highest grade, and in our Heavy Boot Department we sell ten per cent. cheaper than similar goods can be bought for elsewhere. In Boys', Girls' and Babies' Shoes, we carry a great variety in all grades, calculated to meet every requirement for school, play and dress.

See our Windows. Inspect our Goods. Ascertain our Prices.

**BROWN.**  
TELEPHONE 881.

IF YOU WANT THE BEST TAKE THE "FREE PRESS." ALL THE NEWS!

— TRY —  
**SOUTHCOTT'S**  
 FOR Nice Suit  
 Fancy Vest  
 .. on Trousers  
 NEAT LINE OF LIGHT-WEIGHT OVERCOATINGS IN STOCK.  
 Satisfaction Assured. Prices Right.  
**361 RICHMOND STREET.**

I-I-I-I-I-I-I-I-I-I

PRINTERS  
 LITHOGRAPHERS  
 ENGRAVERS

The  
**London**  
 Printing and  
 Lithographing  
 Co'y,

SUBSCRIBERS TO FREE PRESS  
 PRINTING AND LITHO.  
 DEPARTMENTS.

OFFICE,  
 "FREE PRESS"  
 BUILDING.

BEST WORK  
 AT MODERATE  
 PRICES.

I-I-I-I-I-I-I-I-I-I

**TECUMSEH HOUSE**  
 LONDON.



Directly opposite G.T.R depot;  
 street railway past the doors;  
 convenient to all the wholesale  
 and retail business houses of  
 city, making it the most desir-  
 able hotel in the city; elevator,  
 and heated throughout with  
 steam.

Porter in attendance on  
 arrival of all trains.

**RATES, \$2.00 AND \$2.50  
 PER DAY,**

ACCORDING TO LOCATION.

No Extra Charge For Baggage.

**C. W. DAVIS, PROP.**

**Gentlemen:**  
 SEE OUR LEADING  
**SPRING HAT**

**For \$2.00.**

In Colored and Black.

**GRAHAM BROS.,**

LEADING HATTERS  
 AND FURNISHERS, / 159 DUNDAS  
 ST.

«Programme Continued.»

**CAST OF CHARACTERS.**

Mrs. Darbyshire, Will's mother. . . . . Miss Christiana Deschor  
 Mary Darbyshire, Will's sister. . . . . Miss Juliette Downs  
 Barker. . . . . Mr. Philip H. Ryley  
 Will Darbyshire. . . . . Mr. George Webster Parsons  
 JUDITH LOVELESS . . . . . EMILY BANCKER

**TO BE FOLLOWED BY**

**GLORIANA,**

A Farce-Comedy in Three Acts, by JAMES MORTIMER.

**CAST OF CHARACTERS.**

Leopold Fitz Jocelyn, of the Foreign Office . . . . .  
 . . . . . Mr. George Webster Parsons  
 Timothy Chadwick, a retired tanner. . . . . Mr. Eugene F. Eberle  
 Count Evertoff, a Russian diplomat. . . . . Mr. George W. Barnum  
 Baron Kronikoff. . . . . Of the . . . . . Mr. Charles E. Warren  
 Major Stonidoff. . . . . (Russian Army) . . . . . Mr. G. C. Phillips  
 Spinks, Fitz Jocelyn's valet. . . . . Mr. Philip H. Ryley  
 Richard, a servant. . . . . J. G. Glenney  
 Jessie Chadwick, Chadwick's Daughter. . . . . Miss Juliette Downs  
 Kitty, a maid. . . . . Miss Tillie Barnum

**AND**

Mrs. Lovering (Gloriana), a charming young widow. . . . .  
 . . . . . EMILY BANCKER

**SYNOPSIS.**

ACT I.—Fitz Jocelyn's Chambers. ACT II.—Mrs.  
 Lovering's Flat, Piccadilly ACT III.—Chadwick's House,  
 Birmingham. TIME.—The Summer of 1891.

NOTE.—"Gloriana" is produced this year under the  
 direction of the author James E. Mortimer, of London, Eng-  
 land, who made the voyage to America expressly to give this  
 production his personal attention.

**EXECUTIVE STAFF.**

Thos. W. Ryley. . . . . Manager.  
 Walter Butterfield. . . . . Treasurer.  
 J. G. Glenney . . . . . Stage Manager.

(Programme continued on last page.)

**McLEAN'S HARDWARE**

— FOR —

**Bissell's Carpet Sweepers.**

WE CAN SHOW YOU TWELVE DIFFERENT STYLES SAME  
 AS ARE NOW DISPLAYED BY THE BISSELL COM-  
 PANY AT THE WORLD'S FAIR.

CALL AND SEE THESE GOODS

— AT —

**McLEAN'S HARDWARE,**  
 151 Dundas Street.

**Wm. Stevely & Son,**  
 — THE LEADING DEALERS IN —  
**STOVES, RANGES,**  
 .. AND ..  
**HOUSE FURNISHING GOODS.**

OUR STOCK IS THE LARGEST.  
 OUR PRICES THE LOWEST.

362 RICHMOND STREET.  
 'PHONE 452.

**W. T. STRONG,**

Dispensing

— Chemist,

184 DUNDAS ST.,  
 LONDON, ONT.

.. FOR ..

**Fine Etchings....**

— AND —

**Engravings**

— TRY —

**O. B. GRAVES,**  
 222 DUNDAS STREET.

**A WONDER-  
 WORKING**

**Quarter!**

— IS A —

**25 CENT PIECE**

INVESTED IN **3 Elegant**

**GROTTO**

**BOUQUET**

**CIGARS**

OF QUALITY AND AROMA, MADE OF  
 EXCELLENT

HABANA FILLER,

Very Mild and Delicious.

**BRENER BROS.**

### OLD STAMPS WANTED

All kinds of Canadian, Nova Scotia, New Brunswick, Prince Edward Island, British Columbia, Newfoundland and United States postage stamps 1899 are valuable. We desire to purchase promptly cash. I want to buy according to are in or a left on original. Do not send up your old stamps until you have recently paid for a lot of stamps obtained in this manner. It will pay you. Send all you can find to us on approval, and we will remit highest price by return of mail. Common stamps now in use are not wanted. If you have no old letters you may have some friends that have. You will confer a favor on both them and us by calling their attention to this. Write now; do not delay.



**L. M. STAEBLER,**  
185 1/2 Dundas Street, - - LONDON, CANADA.  
(Mention this paper.)

At the Opera Box Office.  
MRS. NEWGOLD (at the box office).—Are opera seats on sale here?  
TICKET SELLER.—Yes, Ma'am.  
MRS. NEWGOLD.—Well, what night do Lahengrin and Carmen sing together?  
*Chicago Record.*  
As He Liked It.  
UNSOPHISTICATED YOUTH (at the box office).—"I'll take two seats for to-morrow night. What are they going to play?"  
TREASURER WALTERS.—"As You Like It."  
U. Y.—"As I Like It? Well, if it's all the same, you can put me down for Romeo and Joolyut."—*St. Louis Republican.*

### FIND YOUR FORTUNE IN LUCKY SANTO DOMINGO

INVESTMENT BONDS guaranteed by the **SANTO DOMINGO GUARANTY CO.**

Allotments take place monthly, and are payable in U. S. gold coin in sums of \$160,000, \$40,000, \$20,000, etc.  
5,692 Bonds paid monthly, aggregating \$574,880. Subscription fees, \$10, \$5, \$2, \$1, 50c. and 25c.

Apply to Local Agents, or address,  
**ANTONIO MORA,** CITY OF SANTO DOMINGO, SANTO DOMINGO.

## EDY BROS.

The Artistic Photographers,

—RECEIVED—

**Three First Prizes**

—AND—

**DIPLOMA**

For Finest Display of Photography  
AT WESTERN FAIR, 1893.

Cabinet Photos, \$3 per doz.

**EDY BROS.,**

214 DUNDAS STREET.

#### THE FICKLE PUBLIC.

When melodrama holds the stage,  
The people for the minstrels rage.

And when the troubadours are starred,  
Their fancy turns to Avon's bard.

But when the house with Shakespeare's filled,  
They want to see the opera billed.

Then when the opera fills the house,  
They call for farce "mit Saus und Braus."

And so it goes; and it's a race  
'Twixt manager and populace.

For, spite of broad and varied range  
The fickle people always change.

And always quit the best to see  
Some stupid meeting, billed as "Free."

### «Programme Concluded.»

During the evening, incidental to the stage performance, the ORCHESTRA of the Grand Opera House, under the direction of MR. FRED. L. EVANS, will perform the following selections

OVERTURE—"Martha," ..... *Flotow*  
RUSSIAN MAZURKA—"La Czarine," ..... *Ganne*  
VISIONS IN A DREAM—(Descriptive), ..... *Lumbye*  
GALOP—"Tarif," ..... *Schacht*  
The above programme subject to transposition

N. B.—The Orchestra of the Grand Opera House may be secured for engagements outside the theatre, by applying at or addressing the Box Office.

The Furniture used on stage is supplied by JOHN FERGUSON & SON, Furniture Manufacturers.

## NEXT \* ATTRACTION.

WEDNESDAY, APRIL 4th.

THE PICTURESQUE IRISH  
COMEDY DRAMA,

# True Irish Hearts

.. BY ..

**DAN McCARTHY.**

Under the management of ED. W. ROWLAND.

A play full of Comedy, Sentiment, Dainty Dancing and Sweet Singing.

Produced by a company of unusual excellence, and staged in a superb manner with Elaborate Scenic and Mechanical effects.

PRICES: 25c., 50c. and 75c.

PLAN NOW OPEN.

### COMING ATTRACTIONS

Are always a source of interest,—theatrical or otherwise. Our attraction just now is the new coal we are receiving daily. It comes direct from the mines, in box cars; is clean, dry, and strictly first-class. All orders, large or small, will receive our prompt and careful attention. Offices, 421 Richmond St., and 316 Burwell St. A. D. Cameron & Son.

WE call the attention of our business men to the PROGRAM as an advertising medium. It reaches the class of people whose trade you want, and the way to get that trade is to make yourself known.

## BELTON & ROOTE, BILL POSTING,

DISTRIBUTING

...AND...

GENERAL ADVERTISING AGENTS

Control all the Bill Boards and Dead Walls throughout the City. Population of City, 40,000

All orders for Bill Posting, Distributing Card Tacking, and General Advertising for Western Ontario will receive prompt attention.

OFFICE: BOX OFFICE, OPERA HOUSE.

**Roses, Carnations,  
Palms,**

**Ferns, Bulbs,**

**J. GAMMAGE & SONS,**

213 Dundas Street.

INDIAN... CEYLON TEA IMPORTING HOUSE.

NEW BLENDS, DELICIOUS AND ECONOMICAL, AT MODERATE PRICES.

"English Breakfast," "Five o'clock Tea," & "Club House" Blends.  
60c. 50c. 45c.

These Blends are standard selections of choice Teas. Highly recommended to families for their fine quality and economical properties.

**S. FUGE,** —IMPORTER OF—  
CHOICE TEAS 212 Dundas St.  
TELEPHONE 858. LONDON.



