

**CIHM  
Microfiche  
Series  
(Monographs)**

**ICMH  
Collection de  
microfiches  
(monographies)**



**Canadian Institute for Historical Microreproductions / Institut canadien de microreproductions historiques**

**© 1998**

## Technical and Bibliographic Notes / Notes techniques et bibliographiques

The Institute has attempted to obtain the best original copy available for filming. Features of this copy which may be bibliographically unique, which may alter any of the images in the reproduction, or which may significantly change the usual method of filming are checked below.

- Coloured covers / Couverture de couleur
- Covers damaged / Couverture endommagée
- Covers restored and/or laminated / Couverture restaurée et/ou pelliculée
- Cover title missing / Le titre de couverture manque
- Coloured maps / Cartes géographiques en couleur
- Coloured ink (i.e. other than blue or black) / Encre de couleur (i.e. autre que bleue ou noire)
- Coloured plates and/or illustrations / Planches et/ou illustrations en couleur
- Bound with other material / Relié avec d'autres documents
- Only edition available / Seule édition disponible
- Tight binding may cause shadows or distortion along interior margin / La reliure serrée peut causer de l'ombre ou de la distorsion le long de la marge intérieure.
- Blank leaves added during restorations may appear within the text. Whenever possible, these have been omitted from filming / Il se peut que certaines pages blanches ajoutées lors d'une restauration apparaissent dans le texte, mais, lorsque cela était possible, ces pages n'ont pas été filmées.
- Additional comments / Commentaires supplémentaires:

L'Institut a microfilmé le meilleur exemplaire qu'il lui a été possible de se procurer. Les détails de cet exemplaire qui sont peut-être uniques du point de vue bibliographique, qui peuvent modifier une image reproduite, ou qui peuvent exiger une modification dans la méthode normale de filmage sont indiqués ci-dessous.

- Coloured pages / Pages de couleur
- Pages damaged / Pages endommagées
- Pages restored and/or laminated / Pages restaurées et/ou pelliculées
- Pages discoloured, stained or foxed / Pages décolorées, tachetées ou piquées
- Pages detached / Pages détachées
- Showthrough / Transparence
- Quality of print varies / Qualité inégale de l'impression
- Includes supplementary material / Comprend du matériel supplémentaire
- Pages wholly or partially obscured by errata slips, tissues, etc., have been refilmed to ensure the best possible image / Les pages totalement ou partiellement obscurcies par un feuillet d'errata, une pelure, etc., ont été filmées à nouveau de façon à obtenir la meilleure image possible.
- Opposing pages with varying colouration or discolourations are filmed twice to ensure the best possible image / Les pages s'opposant ayant des colorations variables ou des décolorations sont filmées deux fois afin d'obtenir la meilleure image possible.

This item is filmed at the reduction ratio checked below /  
Ce document est filmé au taux de réduction indiqué ci-dessous.

	10x		14x		18x		22x		26x		30x	
	12x			16x		20x		24x		28x		32x

The copy filmed here has been reproduced thanks to the generosity of:

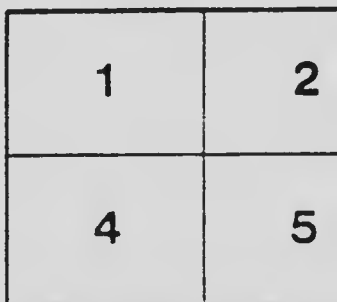
National Library of Canada

The images appearing here are the best quality possible considering the condition and legibility of the original copy and in keeping with the filming contract specifications.

Original copies in printed paper covers are filmed beginning with the front cover and ending on the last page with a printed or illustrated impression, or the back cover when appropriate. All other original copies are filmed beginning on the first page with a printed or illustrated impression, and ending on the last page with a printed or illustrated impression.

The last recorded frame on each microfiche shell contains the symbol  $\rightarrow$  (meaning "CONTINUED"), or the symbol  $\nabla$  (meaning "END"), whichever applies.

Maps, plates, charts, etc., may be filmed at different reduction ratios. Those too large to be entirely included in one exposure are filmed beginning in the upper left hand corner, left to right and top to bottom, as many frames as required. The following diagrams illustrate the method:



L'exemplaire filmé fut reproduit grâce à la générosité de:

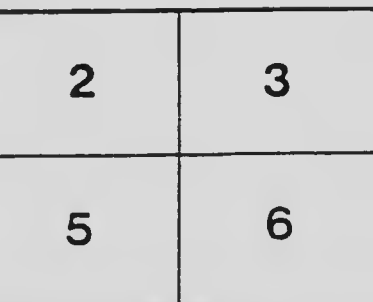
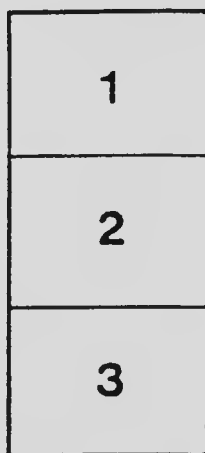
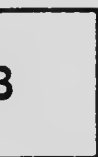
Bibliothèque nationale du Canada

Les images suivantes ont été reproduites avec le plus grand soin, compte tenu de la condition et de la netteté de l'exemplaire filmé, et en conformité avec les conditions du contrat de filmage.

Les exemplaires originaux dont la couverture en papier est imprimée sont filmés en commençant par le premier plat et en terminant soit par la dernière page qui comporte une empreinte d'impression ou d'illustration, soit par le second plat, selon le cas. Tous les autres exemplaires originaux sont filmés en commençant par la première page qui comporte une empreinte d'impression ou d'illustration et en terminant par la dernière page qui comporte une telle empreinte.

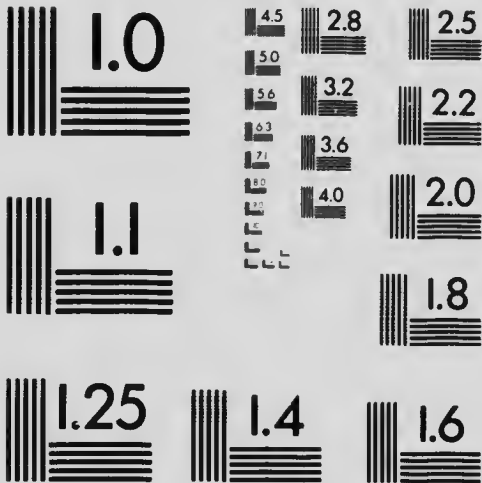
Un des symboles suivants apparaîtra sur la dernière image de chaque microfiche, selon le cas: le symbole  $\rightarrow$  signifie "A SUIVRE", le symbole  $\nabla$  signifie "FIN".

Les cartes, planches, tableaux, etc., peuvent être filmés à des taux de réduction différents. Lorsque le document est trop grand pour être reproduit en un seul cliché, il est filmé à partir de l'angle supérieur gauche, de gauche à droite, et de haut en bas, en prenant le nombre d'images nécessaire. Les diagrammes suivants illustrent la méthode.



# MICROCOPY RESOLUTION TEST CHART

(ANSI and ISO TEST CHART No. 2)



**APPLIED IMAGE Inc**

1653 East Main Street  
Rochester, New York 14609 USA  
(716) 482 - 0300 - Phone  
(716) 288 - 5989 - Fax

"*Thy Kingdom  
Come*"

"IN THE LAST DAYS IT SHALL COME TO PASS, THAT THE MOUNTAIN OF THE LORD'S HOUSE SHALL BE ESTABLISHED IN THE TOP OF THE MOUNTAINS, AND IT SHALL BE EXALTED ABOVE THE HILLS; AND ALL NATIONS SHALL FLOW UNTO IT."

"AND I, IF I BE LIFTED UP FROM THE EARTH, WILL DRAW ALL MEN UNTO ME."



Issued by  
The Board of Finance of  
The Presbyterian Church in Canada

AC901

A7

1920

no. 0014

P\*\*\*



National Library of Canada

Bibliothèque nationale du Canada

# "THY KINGDOM COME"

## The Budget Folder for 1920.

"After we have prayed there are other things we can do; but until we have prayed there is nothing else so important to do." That is the reason we preface the account of our Church's work with a prayer. Firstly, we are on our knees before God; secondly, we are on our feet among men, with hands reaching out to Him our gifts.

An old Greek poet in the mouth of one of his heroes: "I too, will cast a spear, and leave the rest to Jove." We, too, cast our spear, and leave the rest to God. But we can only come to His reservoir of good things with shoes off our feet, in profound reverence, and with a resolute mind and ready hand. We use forces of instruction, appeal, knowledge, but first we use the prayer force. "May Thy Kingdom come in our own hearts, in our own Church, in our own Canada, and in the wide world!"

\* \* \* \* \*

Budget receipts for 1918 amounted to \$1,005,436, our topmost mark. But they did not meet the need, and pressing work was left undone. The Assembly asks for \$1,300,000 in 1919, and \$1,400,000 in 1920.

Even these amounts will not enable the Church to rise to the challenge of the New Era, and the Forward Movement calls for the doubling of the Annual Budget for **Maintenance** in the next five years. The National Peace Thank-Offering of \$4,000,000 is for **Equipment and Extension** and the earnest plea is made that, in addition to the raising of it, every effort be put forth to assure an adequate annual revenue.

The Assembly recommends that Budget givings be sent to the Treasurers of the Church unallocated, to be allocated by them to the various Funds according to the percentages fixed in the Estimates. Re-mit promptly and save interest charges.

1997

852107

## THE KINGDOM IN CANADA

### Home Missions and Social Service

#### Extent of Field.

Beginning with January 1st, with the exception of Missions to the Chinese, all Home Mission and Social Service Work of the Presbyterian Church, from rock-girt Newfoundland to the shores of the Pacific, will be under the care of one Board.

#### Variety of Activities:

1. *Augmented Charges* 270, *Mission Fields* 739—Total 1,019. Of the above, 26 are French, 58 New Canadian (in 12 languages) 20 Indian.

2. *Department of the Stranger.* (a) Maintains Port Chaplains, (b) By "follow-up" work holds present church membership, (c) Secures visitation of hospitals.

3. *Five Evangelical Settlements.* Minister in a score of ways to 1,884 families of 28 nationalities.

4. *Seven Redemptive Homes* shelter 221 girls.

5. *Evangelism.* Five teams conduct missions throughout Canada.

6. *Fresh Air Work.* Poor children are given two weeks' outing.

7. *Eight Hospitals and Twelve School Homes* serve largely the non-English speaking.

8. *Deaconesses* are supplied at strategic centres.

**The New Minimum.** The Assembly has increased the minimum stipend by \$300. This is essential to the Church's success and to her self-respect. Ministers and Ministers' wives in many an isolated outpost have waited too long for this token of the Church's appreciation. The task assigned Presbyteries of adjusting congregations to this new scale will, in many instances, prove difficult and perplexing. Over 700 charges, formerly self-sustaining, have been contributing less than the proposed minimum. How many will reach the new line of self-support?

**Missionaries.** During the past summer, 94 Mission Fields were left without supply; but the outlook is hopeful. Scores of young men, many of whom served overseas, are now training for the ministry.



**Financial Requirements.** If the new minimum is to be realized, if our students are to have a sphere of service, if closed Fields are to be re-opened, if new ground is to be broken, if the call of our cities is not to go unheard, there must be increased financial support. The revenue of past years will not suffice for the task that awaits.

**The Present Time Crucial.** We have entered an era of peace. A new world greets our eyes. The present surely is a crucial period for the Church and our young Dominion. During the war, "We called upon everything within us to stand upon its feet and make its contribution to the great cause." It is possible that those, who for a time displayed rare self-forgetfulness, may slip back into former ways. Peace requires all the virtues demanded by war. There is "no discharge" for those enlisted in the Army of the Lord and who have learned His prayer "Thy Kingdom Come."

#### **Pointe-aux-Trembles Schools.**

In seventy-eight years 7,000 boys and girls have had the opportunity of Christian education in Pointe-aux-Trembles Schools. They are to be found in every part of the Dominion, and bear living testimony to the faith of the founders of the Schools.

Last year nearly 300 were enrolled. To every person or organization giving \$100 a pupil will be assigned, as the annual average cost of education of a pupil is now \$100, in addition to fees paid. The beginning of similar work in Quebec and Hull will open new doors and perpetuate the spirit of Pointe-aux-Trembles.

---

## **THE KINGDOM AND THE WORLD FIELD**

### **Foreign Missions**

**The Outlook?** A new era has dawned. The Orient has touched the West. They fought and bled together and understand each other as never before.

**The Churches?** The Forward Movement is the Church's response. It aims at large gifts and with the gifts will come a new consecration of life. The

Church is awakening to the importance of putting forth her strength.

**Our Share?** Our Missions are distributed over the world. They are in Central India, in North China, in South China, in Shanghai, Middle China, in Formosa, in Korea, in Trinidad, in British Guiana, and amongst Chinese in Canada. There is practically unlimited scope for expansion in each field.

**Our Staff?** In all our Fields there are 114 men. 87 single ladies, and in all, including wives, 303. There are besides 37 ordained and 1,112 unordained native workers. The opportunities far exceed the staff. They cry out for more men.

**Results?** There is Progress, Evangelistically, Educationally, and Medically. Heathen religions are decaying and Christian civilization steadily advancing. The Kingdom is coming.

**Estimates?** For mere maintenance of existing work, without provision for buildings or expansion, the estimates of the Board for 1920 are \$521,000. The General Assembly has allowed only \$425,000. Hence the Board must either cut down the work or get increased revenue. Estimates have been cut to the quick in the Field before being sent home and cut yet more deeply by the Board after they have come home.

**Why the Increase?** Three reasons: (1) Increased cost of living. (2) Increased cost of transportation. (3) Increased cost of exchange.

## THE KINGDOM AND YOUTH

### Sabbath Schools and Young People's Societies

The Forward Movement policy of the Board includes the following out-standing points:

Putting into effect the best plans to help the Home take its primary place in religious training.

Promoting Church Attendance plans to provide for all our children adequate Training in Worship.

Providing Sunday School Extension plans to enlist the 50% not now regularly in attendance at the Church and Sunday School and organizing hundreds of new Sunday Schools until the last boy and girl for whom our Church is responsible is reached with the Gospel message.

**Training Leaders** in sufficient numbers to win our boys and girls to Christ; securing **Recruits for the Ministry and Special Christian Service.**

Seeking to realize the Forward Movement objectives for the Young People ; one-sixth of the Budget and one-tenth of the Peace Thank Offering, and the dedication of their lives to Christian Service.

The Budget allocation for 1920 for all this work is \$28,300. This whole amount can easily be reached if every Sunday School and Congregation will see that a fair appropriation is made either by Rally Day Offering, or from congregational givings.

---

## THE MESSENGERS OF THE KINGDOM

**The Theological Colleges.** The coming of Peace has been marked by thousands of our young men thronging our University Halls. Because of what they and their brothers saw overseas, life service has a deeper meaning than before. Unique is the opportunity thus offered to our Theological Colleges to seek, to find and to train men for the Ministry.

The New Era is exacting in its demands. The supreme claim is that of spiritual leadership. Nothing must be left undone to maintain the high standard of ministerial character and training ever cherished by the Presbyterian Churches. At eight great student centres our Colleges are at work, eager to win and equip our youth for this high calling. But they will be powerless without sympathetic, loyal support in home and school and church. Let us see to it that every college is furnished with the men and means to keep pace with the urgency of the time.

### Missionary and Deaconess Training Home

Trained womanhood will prove a powerful factor in the remaking of the world, as it did in winning the war. In surroundings, equipment and staff, the Home is finely adapted for training young women for Christian service.

One sure result of the Forward Movement will be an increasing demand for trained women workers in the Mission Field at home and abroad, in the Social Settlements, as Ministers' Assistants and in other spheres. Shall we not give our young women full opportunity for this larger life service?

## THE VETERANS OF THE KINGDOM

**Does the Church Care?** Individual members devised generous things but the whole Church in 1918 gave for its aged and disabled ministers and the widows of those who had fallen at the rate of twelve cents per communicant or one cent per month. The meagre annuities provided are inadequate and unjust. This neglect has been described as the "Economic crime of the Protestant Church." For the suffering incident thereto the Church is responsible and has the power to bring welcome relief.

**The Aged and Infirm Ministers' Fund.** The Assembly asked for this Fund in 1918, \$28,500, and received \$23,795. A serious deficit was reported. The demands upon the Fund are justly heavier each year. Much larger gifts are imperative if annuities are to be provided in keeping with the services rendered and the greatly increased cost of living. For 1920, \$37,500 is required.

**The Widows' and Orphans' Fund.** The receipts from Congregations for 1918 were \$20,728, an increase of \$4,901. But, with the help of interest from the modest endowment, provision had to be made for 182 annuitants. It is time that the Church kept faith with the men who gave up all for the Kingdom by lifting the annuities of their widows far beyond \$200 per year.

## Ottawa Ladies College

This residential college is owned and administered by the Presbyterian Church. It offers a good general education, with special provision for music, household arts and physical culture, and its attractiveness is enhanced by its modern building and highly qualified staff.

## THE ESTIMATES FOR 1920

The General Assembly fixed the Budget Estimates for 1920, at \$1,400,000, as follows :

### WESTERN SECTION

	Amount Required	Per- centage
Home Missions and Social Service . . . . .	\$692,000	55.4
Foreign Missions . . . . .	350,000	28.0
Montreal College . . . . .	10,000	
Queen's College . . . . .	9,000	
Knox College . . . . .	19,000	
Manitoba College . . . . .	12,000	
Saskatoon College . . . . .	12,000	
Robertson College . . . . .	10,000	
Westminster Hall . . . . .	12,000	
Missionary and Deaconess Training Home . . . . .	8,000	.6
Pointe-aux-Trembles Schools . . . . .	26,000	2.1
Sabbath Schools and Young People's Societies . . . . .	25,000	2.0
Aged and Infirm Ministers' Fund . . . . .	33,000	2.6
Ministers' Widows' and Orphans' Fund . . . . .	30,000	2.4
Ottawa Ladies' College . . . . .	2,000	.2
	<b>\$1,250,000</b>	<b>100%</b>

### EASTERN SECTION

Home Missions and Social Service . . . . .	\$48,000	32.0
Foreign Missions . . . . .	75,000	50.0
Halifax College . . . . .	15,000	10.0
Pointe-aux-Trembles Schools . . . . .	1,700	1.1
Sabbath Schools and Young People's Societies . . . . .	3,300	2.2
Aged and Infirm Ministers' Fund . . . . .	4,500	3.0
Ministers' Widows' and Orphans' Fund . . . . .	500	.3
Bursary . . . . .	2,000	1.4
	<b>\$150,000</b>	<b>100%</b>

### APPORTIONMENTS TO SYNODS

Maritime Provinces . . . . .	\$150,000
Montreal and Ottawa . . . . .	250,000
Toronto and Kingston . . . . .	390,000
Hamilton and London . . . . .	295,000
Manitoba . . . . .	120,000
Saskatchewan . . . . .	90,000
Alberta . . . . .	50,000
British Columbia . . . . .	55,000
	<b>\$1,400,000</b>



