

**CIHM
Microfiche
Series
(Monographs)**

**ICMH
Collection de
microfiches
(monographies)**



Canadian Institute for Historical Microreproductions / Institut canadien de microreproductions historiques

© 1994

Technical and Bibliographic Notes / Notes techniques et bibliographiques

The Institute has attempted to obtain the best original copy available for filming. Features of this copy which may be bibliographically unique, which may alter any of the images in the reproduction, or which may significantly change the usual method of filming, are checked below.

L'Institut a microfilmé le meilleur exemplaire qu'il lui a été possible de se procurer. Les détails de cet exemplaire qui sont peut-être uniques du point de vue bibliographique, qui peuvent modifier une image reproduite, ou qui peuvent exiger une modification dans la méthode normale de filmage sont indiqués ci-dessous.

Coloured covers/
Couverture de couleur

Covers damaged/
Couverture endommagée

Covers restored and/or laminated/
Couverture restaurée et/ou pelliculée

Cover title missing/
Le titre de couverture manque

Coloured maps/
Cartes géographiques en couleur

Coloured ink (i.e. other than blue or black)/
Encre de couleur (i.e. autre que bleue ou noire)

Coloured plates and/or illustrations/
Planches et/ou illustrations en couleur

Bound with other material/
Relié avec d'autres documents

Tight binding may cause shadows or distortion
along interior margin/
La reliure serrée peut causer de l'ombre ou de la
distorsion le long de la marge intérieure

Blank leaves added during restoration may appear
within the text. Whenever possible, these have
been omitted from filming/
Il se peut que certaines pages blanches ajoutées
lors d'une restauration apparaissent dans le texte,
mais, lorsque cela était possible, ces pages n'ont
pas été filmées.

Additional comments:/
Commentaires supplémentaires:

There are some creases in the middle of pages.
Pagination is unnumbered.
Addenda sheets affixed to back cover or tipped in.

Coloured pages/
Pages de couleur

Pages damaged/
Pages endommagées

Pages restored and/or laminated/
Pages restaurées et/ou pelliculées

Pages discoloured, stained or foxed/
Pages décolorées, tachetées ou piquées

Pages detached/
Pages détachées

Showthrough/
Transparence

Quality of print varies/
Qualité inégale de l'impression

Continuous pagination/
Pagination continue

Includes index(es)/
Comprend un (des) index

Title on header taken from:/
Le titre de l'en-tête provient:

Title page of issue/
Page de titre de la livraison

Caption of issue/
Titre de départ de la livraison

Masthead/
Générique (périodiques) de la livraison

This item is filmed at the reduction ratio checked below/
Ce document est filmé au taux de réduction indiqué ci-dessous.

10X	12X	14X	16X	18X	20X	22X	24X	26X	28X	30X	32X
					✓						

The copy filmed here has been reproduced thanks to the generosity of:

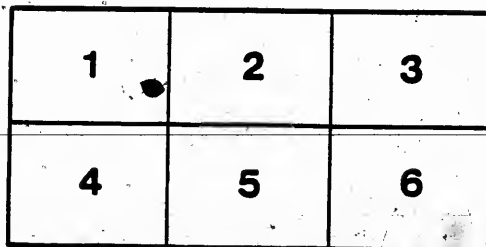
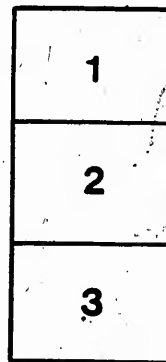
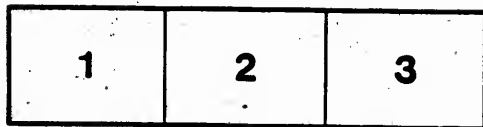
Archives of Ontario
Toronto

The images appearing here are the best quality possible considering the condition and legibility of the original copy and in keeping with the filming contract specifications.

Original copies in printed paper covers are filmed beginning with the front cover and ending on the last page with a printed or illustrated impression, or the back cover when appropriate. All other original copies are filmed beginning on the first page with a printed or illustrated impression, and ending on the last page with a printed or illustrated impression.

The last recorded frame on each microfiche shall contain the symbol \rightarrow (meaning "CONTINUED"), or the symbol ∇ (meaning "END"), whichever applies.

Maps, plates, charts, etc., may be filmed at different reduction ratios. Those too large to be entirely included in one exposure are filmed beginning in the upper left hand corner, left to right and top to bottom, as many frames as required. The following diagrams illustrate the method:



L'exemplaire filmé fut reproduit grâce à la générosité de:

Archives of Ontario
Toronto

Les images suivantes ont été reproduites avec le plus grand soin, compte tenu de la condition et de la netteté de l'exemplaire filmé, et en conformité avec les conditions du contrat de filmage.

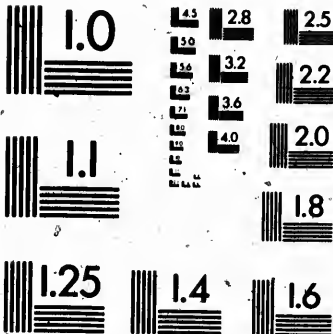
Les exemplaires originaux dont la couverture en papier est imprimée sont filmés en commençant par le premier plat et en terminant soit par la dernière page qui comporte une empreinte d'impression ou d'illustration, soit par le second plat, selon le cas. Tous les autres exemplaires originaux sont filmés en commençant par la première page qui comporte une empreinte d'impression ou d'illustration et en terminant par la dernière page qui comporte une telle empreinte.

Un des symboles suivants apparaîtra sur la dernière image de chaque microfiche, selon le cas: le symbole \rightarrow signifie "A SUIVRE", le symbole ∇ signifie "FIN".

Les cartes, planches, tableaux, etc., peuvent être filmés à des taux de réduction différents. Lorsque le document est trop grand pour être reproduit en un seul cliché, il est filmé à partir de l'angle supérieur gauche, de gauche à droite, et de haut en bas, en prenant le nombre d'images nécessaire. Les diagrammes suivants illustrent la méthode.

MICROCOPY RESOLUTION TEST CHART

(ANSI and ISO TEST CHART No. 2)



APPLIED IMAGE Inc

1653 East Main Street
Rochester, New York 14609 USA
(716) 482 - 0300 - Phone
(716) 288 - 5989 - Fax

VOTERS' LIST

FOR THE

MUNICIPALITY

VILLAGE OF NEWBORO

FOR THE YEAR

1890,



STANDARD JOB PRINT, NEWBORO, ONT.

1890.

Newboro Nov 1/90

Dear Judge, Enclosed I send
list of complaints. Letters List -
List was first posted up 14th
Oct. and this is rather early.
but there will be no more
complaints for we had to
hunt up these — I have
advertised in the "Standard"
your Court to be held 7th.
Nov at 7 P.M. it will then
will have had 9 days pubⁿ.

Yours ve
J. S. Lewis

In his Honor the Judge of the County Court
 of the County of Leeds

The Clerk of the Municipality of the Village
 of Newboro, states and reports that the
 several persons mentioned in Column 1
 of the schedule below, and no others have
 each given to him written notice complaining
 of errors or omissions in the voters list for
 the said Municipality for 1890, on the grounds
 mentioned in Column 2 of the said schedule
 and that such notices were received respectively
 at dates set down in Column 3 of the said schedule
 dated at Newboro
 18th Nov - 1890

P. S. Lewis
 Clerk of Newboro

Name of Complainant	Errors or omissions Complained of	Date when received
Douglas H Cole	Thos Cameron, 8 th be. Thos Cannon Geo Sanderson, 8 th be Geo Sanderson Harriet Barker, 8 th be Harriet Baker	Oct 18 th
Wm J Fitze	Tenant to Mrs Green, Cedar St	Oct 20 th

List No 1

Names of persons

Grounds or Wholes entitled to be on Voters list.

~~John~~

Samuel G Stuart

John R Kerr

tenant to J. R. Dargavel of t. 2 By Street

tenant to J. R. Gallagher - Drumminal St

Account
— 1824

Thomas Cameron
George Sanderson
Harriet Barker
William J. Fitz ^{6u} 72

List No 2. ◆

names Party Date Part of list

The errors in statement corrected

rown
son
arker

1

Should be Thomas Cannon

1

Should be George Sanderson

2

Should be Harriet Baker

Summs

e Parent of W. Green of Stevens Sts

William
R. H.

In

of

J. P.

Elect

the

State

Fourth

State

list

a

the

State

D.C.

The Clerk of the Municipality of the Village
Newtown

Douglas Harrington Cole a voter for the
Electoral District of Leeds in which
said Municipality is situated. complains
that the several persons whose names are set
forth in the subjoined list No 2. are wrongly
placed in said Voters List as shown in said
list No 2.

and take notice that I intend to apply to
Judge in respect thereof pursuant to the
statute in that behalf

Dated this 16th day of October 1890

Douglas H. Cole
Newtown

VOTERS' LIST, 1890.

MUNICIPALITY OF NEWBORO



SCHEDULE OF POST OFFICES

- 1 Newboro. 8 Winnipeg. 5 Westport. 7 Lyndhurst.
 2 Brockville. 4 Elgin. 6 Chicago, Ill. 8 Portland,

PART I.—Persons entitled to vote at both Municipal Elections and Elections to the Legislative Assembly.

Jurors Number on Roll.	NAME	LOT	Concession or Street.	Description	P.C. ADDRESS
8	Ackland George		Drummond	t m f	1
47	Allen James		Brock	t m f	1
61	Abernathy Alfred		Main	t m f	1
j 4	Blake Richard		Drummond	o m f	12
5	Bell Robert		Carleton	o m f	1
6	Bell William		Carleton	o m f	1
j 8	Butler Thomas		Drummond	o m f	1
9	Butler Joseph H.		Stevens	o m f	1
j 10	Bolton George		Main	o m f	1
j 11	Bolton Henry		Main	oo m f	1
j 12	Bolton Henry J.		Main	o m f	1
18	Brines Daniel		By	t m f	1
j 15	Barker Robert			o m f	1
17	Bilton William sr.		Village lot	M o m f	1
j 16	Bilton William jr.		Village lot	M t m f	1
18	Bilton George			f s m f	1
72	Bishop Henry		Drummond	t m f	1
21	Cameron Thomas		Bay	o m f	1
22	Campbell Daniel		Water	o m f	1
24	Campbell John		By	oc m f	1
26	Chaffey Elswood			o m f	3
29	Cole D. H.		Drummond	o m f	1
81	Dier, John E.		Carleton	o m f	1
86	Draffin, William		New	oo m f	1
87	Denby, William		Main	o m f	1
88	Dargavel, John		By	o m f	4
41	Elliott, Thomas		Bay	o m f	1
j 88	Fifield Eugene		Carleton	t m f	1
44	Foley, James		Bay	t m f	1
45	Fahey Patrick		Brock	o m f	1

Jurors Number on Roll	MAME	LOT	Concession or Street	Description	
46	Frodenburgh, W. H.		Brock	o m f	5
48	Foster Thomas		Main	o m f	1
49	Freeman, F. C.		New	t m f	1
66	Fifield Franklin		Carleton	t m f	1
50	Graham, John jr.		Drummond	o m f	1
51	Graham John sr.		Bay	o m f	1
59	Gallagher, John H.		Drummond	o m f	1
54	Grothier, Richard		Carleton	o m f	1
55	Gallagher, J. T.		Drummond	o m f	1
111	Graham William		Bay	t m f	1
184	Gorsline Wm. H.		Main	t m f	1
63	Houghton Daniel		Bay	o m f	1
64	Harrison William		Drummond	o m f	1
67	Hopkins, E. J.		Drummond	o m f	1
68	Haizlett, John		Drummond	o m f	1
69	Hart, John		Drummond	o m f	1
70	Hart Edward		Drummond	o m f	1
71	Heron Hugh		Drummond	o m f	6
180	Houghton, Mark		Drummond	o m f	1
75	Knellar, James		Bay	t m f	1
77	Kilborn, Horace		Carleton	o m f	1
78	Kelley, Michael		Lot N	o m f	1
79	Kelley, Thomas		Lot N	o m f	1
62	Layng, Herbert		Main	t m f	1
80	Lyons, James		Stevens	o m f	1
82	Leggett, William		Stevens	o m f	1
88	Leggett R. O.		Drummond	o m f	1
84	Leggett Henry		Main	o m f	1
85	Leggett, Wm. H.		Drummond	o m f	1
86	Lyons, George		Drummond	o m f	1
87	Lewis, L. S.		Drummond	o m f	1
119	Leech Richard		Drummond	o m f	1
88	Mackley, Stephen		Bay	o m f	1
93	Moriarity, Dennis		Brock	o m f	1
95	McNally, Henry		Main	t m f	1
96	McNally, Bernard		Main	t m f	1
97	McKian, Patrick		Main	o m f	1
98	McDonald, Robert L.		4th con line	t m f	1
27	Monahon, John		Lot 26	t m f	1
107	Moriarity Michael		Con. 6	t m f	1
60	Newman Joseph		Main	t m f	1

Jurors
Number
on Roll

100

50

10

10

10

10

10

10

11

8

11

1

1

1

1

1

1

1

1

1

1

1

1

1

1

1

1

1

1

1

1

1

1

1

1

1

1

1

1

1

1

1

1

1

1

1

1

1

1

1

1

1

Number on Roll	NAME	LOT	Concession or Street.	Description	Area
100	O'Neil Thomas		Simeoe		1
50	Preston, T. R.		Drummond	t m f	1
101	Preston, J. W.		Main	o m f	1
108	Paul, William		By	o m f	1
104	Paul, John		By	o m f	1
105	Pielow, William		Simeoe	o m f	1
106	Peer Charles		Simeoe	t m f	1
108	Preston R. H.		Drummond	o m f	1
110	Quigley Peter		Bay	o m f	1
80	Robeson Horath		Drummond	t m f	1
115	Spicer, Joel		Bay	o m f	1
116	Shaw, John		Drummond	o m f	1
117	Shaver, John A.		Carleton	o m f	1
118	Shaver, J. W.		Drummond	o m f	1
120	Sturgeon, W. H.		Drummond	o m f	1
121	Spicer, William		Bay	o m f	7
122	Singleton T. C.		Drummond	o m f	1
124	Sullivan, John		Con. 6	o m f	1
127	Sunderson Geo.		By	t m f	1
128	Simmons Wm.		Carleton	o m f	1
73	Thompson, John		Drummond	t m f	1
81	Tracy, Hart		Stevens	t m f	1
102	Trousdell, James		Main	t m f	1
129	Tackaberry Hy.		Drummond	o m f	1
181	Thompson Robt.		Main	o m f	1
182	Tett, J. P.		By	o m f	1
186	Tett, Benjamin		Drummond	o m f	1
187	Taylor, Thomas		6 Con.	o m f	1
138	Vickery, Sanford		Main	o m f	1
58	Webster, J. L.		Drummond	t m f	1
76	Whaley, George		Carleton	oc m f	1
90	Wight, J. R.		Drummond	o m f	1
94	Whitmarsh, Noah		Main	o m f	1
189	Wright, Edward Jr.		Water	o m f	1
141	Wright, Edward Sr.		Water	o m f	1
143	Wiltse Eli		Bay	o m f	1
145	Wallace, Arthur		Brook	o m f	1

PART II.—Persons entitled to vote at Municipal Elections only.

Jurors Number on Roll	NAME	LOT	Concession or Street	Description	
1	Allen, Eliza.....		Drummond	o	1
19	Bresce, Melinda.....		Drummond	o	1
5	Barker, Ann.....		Stevens	o	1
57	Barker, Harriet.....		Drummond	t	1
23	Campbell, Catherine.....		By.....	o	1
25	Camm, Susan.....		Main.....	o	1
32	Donahoe, Elizabeth.....		Carleton...	o	1
40	Dunham, Sarah.....		Drummond	o	1
43	Ewing, Isabella.....		4 Con Line	o	1
52	Green, Lydia.....		Stevens ...	o	1
65	Hanna, Ann.....		Carleton....	o	1
59	Moulton, Matilda.....		Carleton....	t	1
89	McDonald, G. Anna.....		Drummond	o	1
92	McDonald, Sarah G.....		Drummond	o	1
91	Preston, Jane.....		Drummond	t	1
112	Richards, Anna.....		New.....	o	1
126	Stapleton, Ellen.....		By.....	o	1
135	Tett, Julyanna.....		Main.....	o	1
143	Wright, Catherine.....		Drummond	o	1

PART III.—Persons entitled to vote at Elections to the Legislative Assembly only.

7	Bousfield, Geo.....		Carleton ..	w f e m f	1
34	DeWolf, Samuel.....		Drummond	o	8
35	Dargavel, William.....			w e m f	1
42	Eaves, William.....		Drummond	o m f	1]
125	Stewart, J. H.....		Carleton ...	w e m f	1

PART II - Persons entitled to vote at Municipal Election only.

Jurors Number on Roll	NAME	LOT	Concession or Street	Description	
1	Allen, Eliza		Drummond	o	1
19	Bresce, Melinda		Drummond	o	1
5	Barker, Ann		Stevens	o	1
57	Barker, Harriet		Drummond	t	1
23	Campbell, Catherine		By	o	1
25	Camm, Susan		Main	o	1
32	Donahoe, Elizabeth		Carleton	o	1
40	Dunham, Sarah		Drummond	o	1
43	Ewing, Isabella		Con Line	o	1
52	Green, Lydia		Stevens	o	1
65	Hanna, Ann		Carleton	o	1
59	Moulton, Ma. Ida		Carleton	t	1
89	McDonald, C. Anna		Drummond	o	1
92	McDonald, Sarah G.		Drummond	o	1
91	Preston, Jane		Drummond	t	1
112	Richards, Anna		New	o	1
126	Stapleton, Ellen		By	o	1
135	Tett, Juliana		Main	o	1
143	Wright, Catherine		Drummond	o	1

PART III - Persons entitled to vote at Elections to the Legislative Assembly only.

7	Bousfield, Geo.		Carleton	w e m f	1
31	De-Wolf, Samuel		Drummond	o	8
35	Dargavel, William			w e m f	1
42	Eaves, William		Drummond	o m f	1
125	Stewart, J. H.		Carleton	w e m f	1

I, J. A. Sidney do hereby certify that the year 1890, of all Municipalities, to and that parts of the said roll. I hereby call up errors are perceived according

Dated this

L. S. Mosey Lewis, Clerk of the Municipality of Newboro, in the County of Essex, do hereby certify that parts one and three of the within list constitutes a correct list for the year 1890, of all persons appearing by the last Revised Assessment Roll of the said Municipality, to be entitled to vote at elections for members of the Legislative Assembly; and that parts one and two constitute a correct list for said year of all persons appearing on the said roll as being entitled to vote at Municipal Elections in said Municipality; and I hereby call upon all electors to examine the said list, and if any omissions or other errors are perceived therein, to take immediate proceedings to have the said errors corrected according to law.

L. S. LEWIS,

Clerk of said Municipality,

Newboro Post Office.

Dated this first day of October, 1890.

CERTIFICATE OF JUDGE.

I, *James Reynolds junior*, Judge of the County Court of the United Counties of Leeds and Grenville, pursuant to ~~the twelfth~~ ¹⁷ Section of "THE VOTERS' LISTS ACT," 1889 do hereby certify that the annexed is a corrected copy of the List of Voters for the year 1890 received by me from the Clerk of the Municipality of the *Wiliage* of *Neuboro* in the said United Counties, according to my revision and correction thereof pursuant to the provisions of the said Act.

Dated at the Town of Brockville, this

thirteenth

day of

December

A.D. 1890

James Reynolds

JUDGE.





