

PLAYGROUNDS



HAUNTS OF FISH & GAME

Grand Trunk Hotels

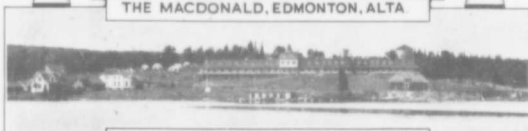


THE CHATEAU
LAURIER,
OTTAWA
ONT.

THE FORT
GARRY,
WINNIPEG
MAN.



THE MACDONALD, EDMONTON, ALTA.



THE HIGHLAND INN, ALGONQUIN PARK



CAMP NOMINIGAN, SMOKE LAKE, ALGONQUIN PARK

RATES AND ACCOMMODATION

The Chateau Laurier—Three hundred and fifty rooms—Rates \$2.50 and upwards per day. European Plan. Angus Gordon, Resident Manager.

The Fort Garry—Three hundred rooms. Rates \$2.00 and upwards per day. European Plan. W. P. Hutchison, Resident Manager.

The Macdonald—Two hundred rooms. Rates \$2.00 and upwards per day. European Plan. J. Venn Henderson, Resident Manager.

The Highland Inn, Nominigan Camp, Camp Minnesing. For rates and other information see Algonquin Park section of this booklet. Miss Jean Lindsay, Manager.

Playgrounds

A Booklet of Information
Regarding

THE

Tourist, Fishing and Hunting Resorts

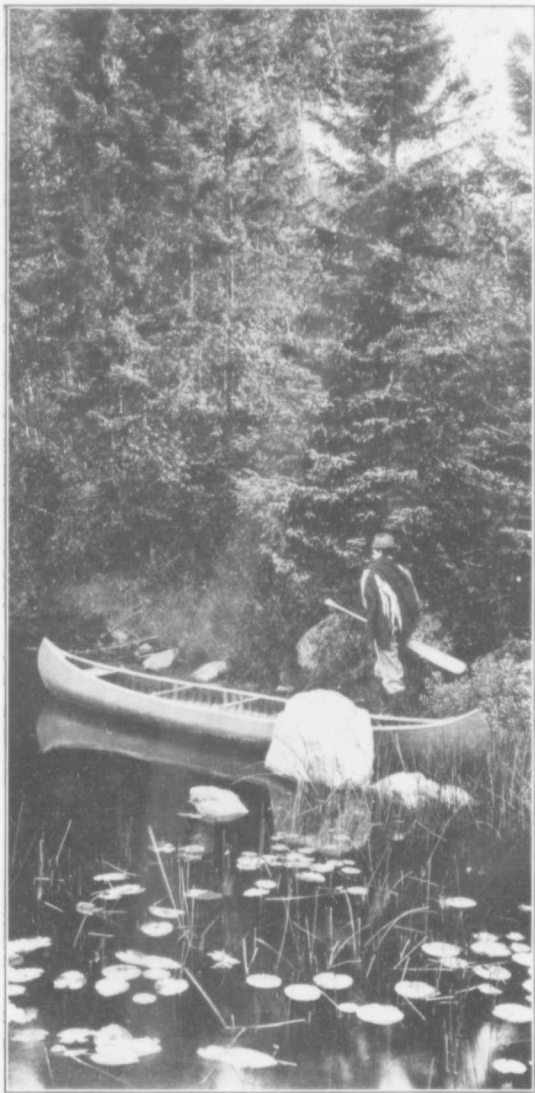
REACHED BY THE
GRAND TRUNK RAILWAY
SYSTEM

F
5020
G73



814495

Issued by the
PASSENGER TRAFFIC DEPARTMENT
1918



The Lover of Out-of-door Life Finds in Canada's Great Province of Ontario an Ideal Vacation Territory.

PLAYGROUNDS

THE lines of the Grand Trunk Railway System reach all the famous resort districts of Eastern Canada, Maine, New Hampshire, Vermont and Michigan. In the wonderful territory served by this railway are scores of summer playgrounds, offering the traveller the widest choice of holidays—vacations by the shores of tranquil, tree-fringed lakes, at the mountain resorts, by the sea coast or in historic cities.

Fishing, hunting, boating, bathing, golf, etc., can be enjoyed under delightful conditions, while the cool, bracing, summer airs, general at these resorts, even in the height of midsummer, are a tonic for tired men and women. The accommodation provided for the visitor is of the highest order, ranging from modera hotels to modest country boarding-houses, while the camper, canoeist and sportsman can rent outfits and secure everything requisite for a trip.

This publication deals in a general manner only with these many resorts, but any Grand Trunk agent (see list on page 56) will gladly assist you in mapping out your tour and supply you with copies of other attractive publications issued by the Grand Trunk Railway System, including, "Muskoka Lakes", "Algonquin Park", "Portland, Casco Bay and Maine Resorts", and "Lake of Bays".

INDEX.

	Page.
Algonquin Park of Ontario	4
Muskoka Lakes	6
Lake of Bays	9
Thirty Thousand Islands of Georgian Bay	11
Timagami Region	15
Kawartha Lakes	17
Lakes Couchiching and Simcoe	20
Maganetawan River	21
Severn River	22
Lake Nipissing and French River	23
Thousand Islands and Lake Ontario	25
Lake Erie Resorts	26
Lake Huron and St. Clair River	27
Ottawa, Montreal, Toronto and Quebec	29
Maine and New Hampshire	30
Vermont and Lake Champlain	31
Michigan and Indiana Lake Resorts	32
Big Game Hunting	34
Camping Club Vacations	36
Hunting and Fishing Locations	42
Golf Courses	44
Fish and Game Laws	45
Hotels and Boarding Houses	50
Baggage, Customs Regulations, etc.	55
Grand Trunk System Agencies	56

ALGONQUIN PARK.

The Algonquin Park of Ontario is a great reserve of nearly four thousand square miles. It is on the very ridge of the famed "Highlands of Ontario". Its altitude above sea level averages 1,700 feet, while some of the lakes in the Park are 2,000 feet above the sea. Its tonic air filters through millions of acres of pine and balsam and spruce. The days are unusually long in this region, with warm, balmy sunshine, and in the evening coats and warm wraps are required out of doors. The fragrant bush, through which roads and trails are constantly being extended, the tree-fringed lakes, disturbed only by sportive bass or trout or the swish of the paddle, the serenity, the impressiveness, and the beauty of it all combine to place the visitor under the spell of this wonderful natural domain.

The park makes an especially strong appeal to the fisherman and canoeist. There are more than 1,500 lakes in the park, and the excellence of the sport draws anglers from every part of the Dominion and from every State in the Union. Among the special varieties to be caught are the genuine square-tailed brook trout, red-spotted or speckled;

the gamey black bass of the small-mouthed variety, ranging from half a pound to four pounds, and the black-spotted salmon, or its near relative, the grey trout.

The accommodation in the park is such that the most varied tastes can be pleased. There are hotels, including the well-known "Highland Inn", for those who want to be in the wilderness, yet enjoy all the comforts of good service and social companionship. There are log cabin camps, Nominigan Camp and Camp Minnesing, comfortably furnished and ideal for family parties, with central lodges, containing recreation and dining-rooms, where you will find everything ready for you on your



11-1b. Algonquin Park Salmon Trout.

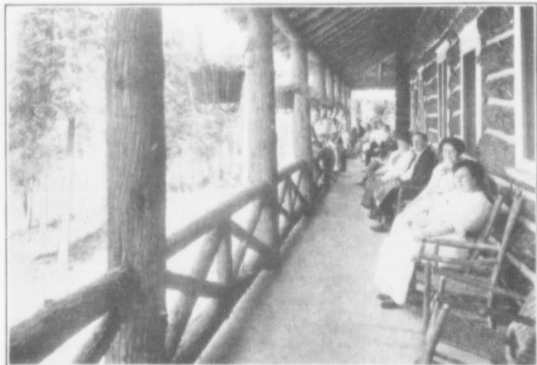


The Highland Inn, on Cache Lake.

return from fishing excursion or tramp. If you have planned to camp under your own canvas you may step into a canoe at one of the little railway stations, and after a short paddle find a site unmarred by the hand of man, yet within easy reach of the park outfitting stores. Many families go into the park expressly for the camping, making their headquarters at the hotels long enough to get supplies and camping outfit ready for the trip.

The park is easily accessible by the Grand Trunk Railway from all parts of the United States and Canada. It is about two hundred miles north of Toronto and one hundred and sixty-nine miles west of Ottawa, the Capital of the Dominion. It is about six hundred miles from New York City, a little less from Boston, Mass., about seven hundred miles from Chicago, Ill., and about nine hundred miles from St. Louis, Mo.

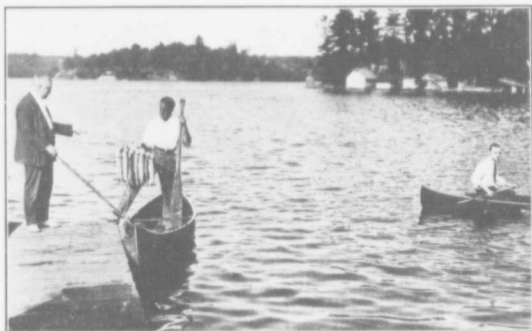
For reservations at the Highland Inn, Nominigan Camp and Camp Minnesing apply to Miss Jean Lindsay, Manager, care of the Chateau Laurier, Ottawa, up to June 1st. After that date, care Algonquin Park Station, Ontario. The Highland Inn opens for the reception of guests on June 15th and closes September 30th. Camps open June 29th, and close August 31st. For more detailed information, maps, routes, etc., write to or call on any agent of the Grand Trunk Railway System, who will gladly supply you with illustrated booklet, "The Algonquin Provincial (Ontario) Park". See also hotel list in this booklet.



At Camp Minnesing, Algonquin Park.

THE MUSKOKA LAKES.

This most famous of Canadian resort districts is reached through Muskoka Wharf Station (112 miles north of Toronto and 212 miles from Buffalo, N.Y.), and to this point run the through Muskoka trains. Connecting with these trains are the steamboats which serve all the resorts on the three lovely lakes, Muskoka, Rosseau and Joseph, which are known to travellers as "The Muskoka Lakes". The Muskoka region's popularity is an enduring one and its charms are never forgotten by the visitor. When you enter the district you are amazed at the extent of the lakes, which appear so small on the map. Then the multitude of islands and the diversified shore line cause you to wonder how the captains of the lake steamships pilot their vessels so swiftly and safely through the maze. Against the steep woodlands nestle pretty cottages, hotels and summer villas, and these charming summer homes harmonize with their surroundings of blue waters and leafy woods. In Muskoka there is absolute immunity from hay fever. This is a paradise for any man or woman fond of



A Fine String of Muskoka Trout.

a canoe or a launch, while everywhere in these lakes there is good fishing and bathing in safe waters, and fine opportunities for a game of golf or tennis.

Some years ago it was found that the fishing in the Muskoka Lakes was running out and a system of re-stocking was commenced. The Provincial Government have from year to year deposited several thousand of bass fry, while the Dominion Government deposited several thousand of Atlantic salmon fry. There is now in operation each season at Port Carling a pickerel hatchery, from which the lakes receive several millions of pickerel fry. As a result, the fishing in Muskoka Lakes has been very much improved within the last few years, and many fine catches are now made. There are many small lakes, tributary to the Muskoka Lakes, that have good fishing. Near Beaumaris, Leonard Lake and Brandy Lake contain black bass and pickerel. Near the Royal Muskoka Hotel there is Sucker Lake, Bruce Lake, Watson Lake and Bass Lake, where there is good bass fishing. In Lake Joseph the finest specimens of trout are caught, deep water trolling. Tributary to Lake Joseph are Clear Lake, White Fish Lake, Trout Lake, Long Lake, Black Lake, Turtle Lake and Blackstone Lake, in all of which will be found lake trout and small-mouth bass. Good fishing in the Moon River, near Bala.



On Lake Muskoka.

Muskoka has more than seventy places at which the visitor can stay, so that it offers a wide variety of accommodation. (Hotel list on page 50).

One of the most interesting and picturesque eighteen-hole golf courses in Canada is situated at Beaumaris, on the Muskoka Lakes, within an hour's sail of Muskoka Wharf and the through trains of the Grand Trunk. The scenic surroundings are superb—Lake Muskoka on one side and Milford Bay on the other, with beautiful stretches of woodland. The course is kept in splendid condition by the Beaumaris Golf and Tennis Association, and is in the centre of a district of magnificent summer homes. Very reasonable fees are charged by the Association for playing privileges, and hotel accommodation is had right at the links, where the Beaumaris Hotel is situated. The general layout of the course is admirable. There are five one-shot holes, a couple of long ones, respectively 467 and 476 yards, with a good sprinkling of 300-yard holes. The bogey of the course is 72.

The newly improved golf links at the Royal Muskoka Hotel represent the last word in a nine-hole course. Every green is well watered and in perfect condition. After beginning



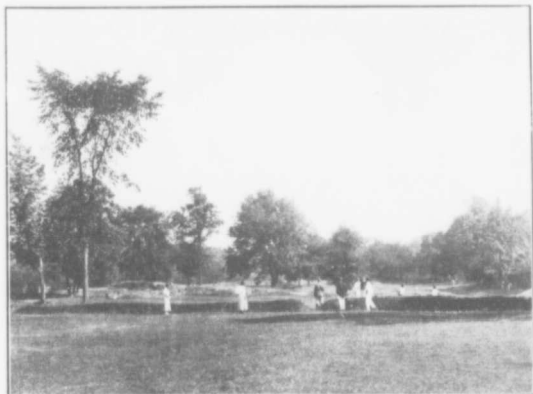
The Royal Muskoka Hotel.



Monteith House, Muskoka Lakes.

his play at No. 1 tee, now directly in front of the hotel, the observant golfer as he pursues his ball is charmed by the ever-changing aspect of lake and island view. Several hundred yards have been added to the old course and the natural hazards make it as sporty a course as a critic ever played over. In addition, it possesses rare charm, because of its picturesque location. It occupies a rolling plateau which commands extensive and splendid views. The turf is all that can be desired by the most exacting golfer, and no expense is spared in proper up-keep of the course. When you finish at No. 9 green you are back at the hotel, where a rest room and refreshments are at the golfers' disposal. A competent instructor is present throughout the season. The bogey for the new links is 38, and the total 2,850 yards.

Within a short distance of the Monteith House, at Rosseau, Muskoka Lakes, a first-class nine-hole golf course has been laid out. It is now in its fifth season, and improvements and additions have made it very popular with visitors to Muskoka. It is a course of 2,150 yards, and is under skilled and careful management.



Golf Course at Beaumaris, Muskoka Lakes.

LAKE OF BAYS.

Huntsville, Ontario, 146 miles north of Toronto, is the gateway to the Lake of Bays region. This territory is surpassingly beautiful, comprising some of the loveliest water stretches in this country of lakes. The Grand Trunk trains connect with a flotilla of lake steamboats serving all the territory.

Those in search of health will find the purity of air and general surroundings most beneficial. Being at an altitude of 1,000 feet above the sea level, there is no hay fever and sufferers from that complaint find immunity here. Perfumed breezes blow across the lake at all hours of the day and night. You may bathe in its cool waters, enjoy a game of golf, take boating excursions to the various points along its shore line and catch its fine bass and trout. The murmur of gentle waters is everywhere interwoven with a whispering of trees. Speckled trout, salmon trout and back bass are plentiful in these waters, while whitefish, salmon trout and speckled trout are found in great quantities in the waters of the surrounding lakes.



Golfing at Norway Point, Lake of Bays.

The Wawa, at Norway Point, Lake of Bays, is one of the best known summer hotels in Canada, and a still larger enterprise, the Bigwin Inn, has recently been completed and will open at the end of the war. On attractive points on the lakes are many well-conducted resort houses.

Golfing on links swept by the pine-scented breezes of the Northland is one of the attractions which is yearly drawing an increasing number of visitors from all parts of the continent to the territory served by the Grand Trunk Railway, and in the Lake of Bays district are the Norway Point golf links. The fifty acres of cleared hills, sloping down to the lake, are entirely free of rocks, and make an excellent nine-hole golf course, even in the dampest of seasons, while the views from the links are beautiful. The gorgeous blue of the lake, with its green points and islands, is spread out below, and at every



The Wawa Hotel, on Lake of Bays.

hole one gets a different and more delightful view. From the second tee there is a charming glimpse of the "WAWA", splendidly situated at Norway Point, just half a mile away, and at the fourth tee even the most speedy golfer stops to draw a long breath of satisfaction as he looks down on a little lake set round with pines on one side of him, and the blue Lake-of-Bays on the other. The services of the club professional are always available, and visitors may have playing privileges on payment of a moderate fee.

In the same territory the Lake-of-Bays Golf Club has delightfully situated links at Clovelly. It is a nine-hole course of 3,325 yards, overlooking the waters of the lake. The links were laid out by Mr. George Cumming, professional for the Toronto Golf Club. From every green there are charming views. There is a nine-hole course at the Britannia Resort, Lake-of-Bays.

Complete description of this exceptional region may be found in the Lake of Bays folder issued by the Grand Trunk Railway System. (For list of boarding-houses and hotels see page 51 of this booklet).



Norway Point, Lake of Bays.

THE 30,000 ISLANDS OF GEORGIAN BAY.

Penetang, Ontario (101 miles north of Toronto and 201 miles from Buffalo, N.Y.), is the chief gateway to the 30,000 Islands of the Georgian Bay—an all around vacation territory, and one of the best fishing districts on the continent. The Grand Trunk trains connect with the steel steamer "Waubic" of the Northern Navigation Company's fleet, which calls at all the important points in the region between Penetang and Parry Sound.

The whole journey through the Georgian Bay is one of panoramic variety, including shaded nooks, wave-lashed shores, with rocky forest depths. The Archipelago, which is an arm of Lake Huron, consists of something like thirty-two thousand islands, ranging in size from several square miles down to the size of a dining-table. The territory abounds with good fishing grounds and game sites. There are hotels which accommodate varying numbers of guests, and the food served at these island hotels includes all of the wild game and fish native to these regions.



Steamer Waubic at Minnecog.

PENETANG itself is a most interesting point and the scene of many historic events. It has a beautiful harbor, surrounded by terraced banks, and is much frequented by those planning vacations on the islands of the bay. Penetang is also a good location for the angler, the fishing grounds being easy of access. Camping supplies of all kinds, boats and launches may be obtained at moderate rates.

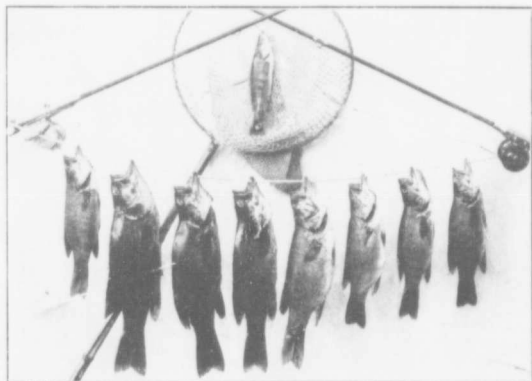
HONEY HARBOR is the first call after leaving Penetang on the tour through the 30,000 Islands. It is in the heart of one of the finest fishing grounds where bass, pickerel and maskinonge are plentiful, and lake trout are caught weighing from ten to fifteen pounds. The hotels furnish first-class accommodation at moderate rates, and include "The Royal", with accommodation for two hundred people, and "The Victoria", with accommodation for ninety guests, both hotels having a high reputation. Among the attractions other than fishing, this district offers fine canoe routes for long and short trips among the many islands and amid fascinating scenery. Speedy motor launches, sail boats and all kinds of craft make aquatics a dominating pastime for those who love this branch of sport. Excellent bathing beaches and fine tennis courts



The Royal Hotel, Honey Harbor.

are also provided. Indian guides to pilot you to the best fishing grounds are available, and all fishing requisites, etc., can be had at local stores.

AT MINNECOG, the next call after Honey Harbor, is the Minnecoganashene summer resort. This wooded island has a shore line of about three miles. It may modestly be called beautiful. The main house of the resort is situated on the highest point of the island and commands splendid views in every direction. The group of buildings includes a number of cottages where the visitor may enjoy the quiet of a cottage home, and at the same time join in the social life of a well-furnished hotel. The resort is in every respect high-class. The fishing is excellent, and the sailing, boating and canoeing are all that can be desired. In addition to a number of sailing, rowboats and canoes, two gasoline launches are kept for picnics, fishing parties and excursions. The bathing is perfect. There is a sandy beach where the children are safe, also deep water for swimmers, and from June to September the temperature of the water is delightful. There is a large octagonal dancing-room to afford amusement for the guests



An Early Evening Catch, Honey Harbor.

in the evening. As a health resort, the air is invigorating and conducive to health and refreshing sleep.

After leaving Minnecog the steamer enters a labyrinth of islands and follows channels that wind sinuously between rocks. These channels again expand into lakes studded with islands. Calls are made at Whalen's, Go-Home Bay, Wah-wahtaysse, Manitou, Copperhead, Sans Souci and Rose Point.

SANS SOUCI is situated at the mouth of the Moon River, and the waters in the vicinity are considered among the finest fishing grounds in Ontario. There is an excellent hotel. Sans Souci is the headquarters for those wishing to do the Moon River, where famous hunting and fishing grounds are found. Black bass, pickerel and lake trout are plentiful, while there is an abundance of deer, bear, muskrat, partridge and duck.

ROSE POINT Summer Resort is beautifully situated on the inside channel. The hotel has been rebuilt this season and has accommodation for sixty people, with hot and cold water in every room. It is operated on the European plan, with restaurant in connection. Desirable cottage sites can be obtained at Rose Point at reasonable terms. For reserva-



The Capstan Inn, Wasago Beach.

tions at the hotel and further information regarding cottage sites, etc., write W. F. Thomson, Rose Point, Ontario.

PARRY SOUND is a town built upon the granite hills where the Sequin River empties into the Sound. There is excellent hotel accommodation here, and many beautiful side-trips can be made to points within easy reach by steamer.

From Rose Point and Parry Sound, connection is made with the Grand Trunk Railway System for Maple Lake Station (a distance of fifteen miles), and thence by stage line (eight miles) to Port Cockburn, at the head of Lake Joseph, or by stage line (twelve miles) to Rosseau, at the head of Lake Rosseau. From Rosseau the traveller may proceed by steamer through the Muskoka Lakes, one of the most magnificent districts in the "Highlands of Ontario", to Muskoka Wharf, and thence by Grand Trunk Railway System to starting point.

WAUBAUSHENE is one of the most popular points in the Georgian Bay district, although not a port of call on the steamship route between Penetang and Parry Sound. It is on the line of the Grand Trunk between Orillia and Midland, and is within four hours' ride from Toronto. Hundreds of discriminating anglers go to this point each year for the

black bass, maskinonge and salmon trout fishing. It is particularly favored by clubs from Buffalo, Pittsburg, Columbus and Chicago, as well as the larger Canadian centres. There are a number of resort houses offering good accommodation, and trips may be made from this centre into a sporting district that is not excelled in the "Highlands of Ontario".

WASAGO BEACH is another favored spot in the Georgian Bay district, and is reached through Collingwood, ninety-four miles from Toronto and one hundred and ninety-four miles from Buffalo, on the Grand Trunk. Wasago Beach is renowned for its magnificent sandy beach, which is about one hundred feet wide and eight miles long. Here motorists can enjoy a driveway unexcelled in Canada. Parties leaving Toronto in motors at week-ends reach this resort over an excellent road in five hours, without exceeding the speed limit. You can leave Toronto also on the G.T.R. for Collingwood, and make the trip in about four hours, thence by motor car to the beach in half an hour. Wasago Beach has three good hotels, with moderate rates, and excellent opportunities are



Hunting Prizes, Georgian Bay Region.

afforded for bathing, boating and fishing. Those desiring accommodation during June, July and August would do well to secure reservations as early as possible. Special arrangements can be made for furnished cottages by communicating with M. P. Byrnes, Chairman Transportation Committee, Board of Trade, Collingwood, Ontario.

STAYNER, eighty-five miles from Toronto, is another tourist centre in this region. A four-mile drive along a well-gravelled country road brings one to the shore of the Nottawasaga Bay. Two miles and a half farther down the beach is the first of three resorts which are fast becoming prominent among the most attractive summer resorts in Canada, viz.: Oakview, Pine Grove and Wasaga Beach. Three motors run between the Central Hotel in Stayner and the Russell House at Pine Grove, two large touring cars serve the patrons of Capstan Inn at Wasaga Beach, while several private cars with licensed chauffeurs are always available for any destination. These several conveyances meet all trains.

THE TIMAGAMI REGION.

This beautiful region is reached through Timagami Station, 300 miles north of Toronto and 400 miles from Buffalo, N.Y. Timagami (pronounced Te-mog-a-me) has an average elevation of one thousand feet above sea level, gives absolute immunity from hay fever, and ranks as one of the loveliest portions of the famed "Highlands of Ontario". It is one of the great Canadian reserves that have been set aside for all time as playgrounds for the people. It contains 3,750,000 acres of lakes, rivers and wooded lands. In the centre of this territory is wonderful Lake Timagami, with its shore line of 1,132 miles, while there are hundreds of other lakes to invite the angler and canoeist.



50 lbs. of Lunge, Cochrane Camp, Timagami.

In Timagami, the lover of nature may still find the "unspoiled" wilderness. No lumberman's axe has touched its giant pines, no sawmill refuse has polluted its crystal waters. The disciple of Isaac Walton makes a Mecca of this northern lakeland. In Timagami, and the innumerable surrounding lakelets, are game fish without end. Many of its pools have never given back the reflection of a white man's face, felt the kiss of angler's line, or shivered at the passing of the whirling spoon. Here, it is easily possible to take the day's quota of speckled trout, small-mouthed black bass, grey lake trout, wall-eyed pike and common pike. If you go to Timagami you can get fish, and get them "good and plenty".

The Timagami region can also be confidently recommended to the hunter, this being the land of the moose, caribou and red deer, while there is an excellent supply of game birds.

On the arrival of the trains at Timagami Station, steamer or gasoline launch is ready to carry the passenger to the principal points on Lake Timagami. There is also a daily mail service to the principal points.

Bear Island is the centre of Lake Timagami, which spreads like some gigantic octopus out over this pristine wilderness, stretching its one hundred and one different legs and arms and feelers into the interminable pine forests in every direction. At Bear Island is the Hudson's Bay Company Post, an up-to-date general store, at which you can supply your every need, including fresh vegetables, fruits, etc. From the Hudson's Bay Post fishing tackle, tourist supplies, canoes and guides can also be obtained. Mr. R. D. Fraser, the factor, is always ready to plan for the visitor an itinerary that assures a pleasant trip and good fishing. Canoes, skiffs and camping



28¾-lb. Timagami Lake Trout.

outfits can be rented at the following rates: Canoes, 60c per day, or \$3.50 per week; skiffs, 75c per day, or \$4.00 per week; tents, 25c to 50c per day; blankets, 10c to 15c per day; cooking outfit, \$1.00 to \$3.00 per week; guides, \$3.00 per day. Those planning a canoeing or fishing vacation in Timagami should write in advance to R. D. Fraser, Bear Island post-office, Ontario, Canada.

There are permanent camps in Timagami where visitors may enjoy floored tents, comfortable dining halls, and all the novelty and freedom of camp life. Among these is Wabi-Kon, a picturesque summer resort, controlled by the Wabi-Kon Camping Club. It is situated on Temagami Island, some three miles from Bear Island. Two of the famous boys' camps of the continent are also situated in Timagami. The Keewaydin Camp, on Devil's Island, and Camp Timagami (generally known as Cochrane Camp), in the south arm of Lake Timagami. The Lake View House, on Bear Island, has accommodation for fifty guests.



Homeward Bound from the Fishing Trip.

THE KAWARTHA LAKES.

The Kawartha Lakes lie north and east of Lindsay and Peterboro, Ontario, (sixty-eight and ninety-one miles respectively from Toronto), and are also reached through Lakefield Station. The chain comprises Lakes Katchewanooka, Clear, Stoney, Buckhorn, Chemong, Pigeon, Bald, Sturgeon, Cameron and Balsam. There is good steamboat service to the various points on the lakes.

The district combines the wildest primeval granite, mountain and forest scenery, with lovely, grassy, shrub and vine-clad shores. Many of the lakes are dotted with islands, on which pretty and comfortable homes and hotels have been erected, and throughout the chain the tourist is at no point remote from town or village, and yet in comparative seclusion. As for the canoeist, this midland district of Ontario is one broad continuous network of lakes extending to James Bay.

PETERBOROUGH is a charming city, where all requisite supplies for campers may be secured. Hotel accommodation is good. A line of steamers is operated on the Otonabee River and Rice Lake, connecting with the trains of the Grand Trunk Railway System.

BEWDLEY, located on Rice Lake, is reached through Campbellcroft, a station on the Grand Trunk Railway, twenty-one miles south of Peterborough. Good lunge fishing and duck shooting.

HASTINGS, Ont., twenty-two miles south of Peterborough, a village of about 1,000 inhabitants, has many attractions as a summer resort, affording splendid facilities for boating, etc. Many excellent sites for summer cottages may be obtained at reasonable prices.

LAKEFIELD, a pretty village nine miles north of Peterborough, beautifully situated at the eastern extremity of the Kawartha Lakes, is one of the northern termini of the Grand Trunk Railway System. Its hotels are modern and comfortable. The steamers of the Stoney Lake Navigation Company make this point their headquarters, and make frequent trips to Stoney Lake and its island-studded waters. Excellent bass and maskinonge fishing may be had here.

"VIAMEDE"—At a romantic point on Stoney Lake, known as Burleigh Shore, rises stately Mount Julian, clothed in ver-

ture and studded with clumps of trees. Its summit commands a magnificent view of this picturesque district. In the shadow of Mount Julian is "beautiful Viamede", a resort house surrounded by groves of giant trees. "Viamede" has accommodation for about eight-five guests, and is a first-class hotel in all respects.

YOUNG'S POINT is situated at the southern end of Clear Lake, and is the first call of the Stoney Lake steamer from Lakefield. Here are located three hotels. Bathing is excellent and fishing good, bass and lunge being plentiful.

BURLEIGH FALLS.—At this point is situated the Park Hotel, which has accommodation for 150 guests.

BUCKHORN is a most enjoyable summering place. The fishing here is excellent. In the fall this is a favorite resort of the deer hunter.



Getting Ready for Lunch.

BRIDGENORTH.—Here is situated Chemong Park, reached from Peterborough (six miles) by the regular stage line which connects with the Grand Trunk trains. Chemong Lake is 560 feet above Lake Ontario, or nearly 900 feet above sea level.

BOBCAYGEON is situated on an island in the river between Sturgeon and Pigeon Lakes. It can be reached either via Lindsay, from which place a well-appointed mail steamer makes daily trips, or from Lakefield, and the westbound steamer route, or from Coboconk, at the extreme western end of the chain of lakes, to Sturgeon Point, where connection is made with steamer. Good hotels and boarding-houses.

LINDSAY is a favorite distributing point for Kawartha Lakes district, for it is here the tourist takes the steamer for

Sturgeon Point, Bobcaygeon, Fenelon Falls, Rosedale, Cobocok, and all intermediate resorts and camps on the shores of Sturgeon, Pigeon, Cameron and Balsam Lakes. Tourists may also outfit here for long or short canoe trips into the north country.

KINMOUNT, the most northerly point in the Kawartha Lakes district, lies thirty miles from Lindsay. The town is becoming more popular each year as a tourist centre and is the point of ingress to a number of charming lakes noted for their scenic beauty and excellent trout and bass fishing.

PORT PERRY is justly noted for three things: shooting, boating and picturesque scenery. It is located on Lake Scugog, at the head waters of the Kawartha Lakes. It has some of the best wild duck and goose shooting in Ontario.

FENELON FALLS.—This thriving village of about 1,500 inhabitants is situated between Cameron and Sturgeon Lakes, two of the most beautiful lakes. The very best of fishing, duck and partridge shooting, each in its season, are to be had here.

ROSEDALE is a charming place, situated on the shore of Balsam Lake, at the entrance of the Rosedale River. It is an ideal camping place. The rivers, together with the lake, afford opportunities for fishing in any weather. Sylvan Lodge, F. J. Goodman, proprietor, is situated in a beautiful grove on the shore of Balsam Lake, and is noted for good fishing. Accommodation for fifty people. Cottages may also be obtained.

KIRKFIELD is located four and one-half miles from Balsam Lake, and three-quarters of a mile from the Trent Canal. For the accommodation of visitors there is one of the finest village inns in Canada, built on the same scale as the Old Country inns. It has 24 single rooms, hot and cold baths, electric lights, etc.

COBOCONK, on Gull Lake, situated between Balsam Lake and the Mud Turtle Lakes, furnishes good accommodation for tourists, and good fishing.

Excellent guides and cooks may be obtained in Lindsay, Peterborough, Lakefield, Fenelon Falls, Cobocok, Bobcaygeon—in short, at all points along the route. See hotel list on page 56.



Bring Your Camera to the "Highlands of Ontario."

LAKES COUCHICHING AND SIMCOE.

The town of Barrie, Ontario, sixty-four miles north of Toronto, is the centre from which the resorts on Lake Simcoe are reached. Steamboats serving the various points on the lake meet the trains of the Grand Trunk in the summer season. Lake Simcoe is thirty-five miles in length, and fifteen in breadth. It has a shore line of over 200 miles, and there are many resorts of especial charm, picturesquely situated overlooking its waters, including Jackson's Point, Big Bay Point, De Grassi Point, Morton's Park, Beaverton and Strawberry Island. The big lake offers opportunities for splendid yachting, fishing and cruising trips.

Lake Couchiching, immediately to the north of Lake Simcoe, is a very gem among inland waters, and has been styled "The Geneva of Canada". The lake is about twelve miles long and about five miles broad. The town of Orillia, eighty-six miles north of Toronto, is situated on the western shore of the picturesque lake. Within town limits are no less than thirteen miles of lake front, and along this are built many artistic and



Ideal Camping Spots on the Lakes.

cozy summer homes and cottages. One of the principal attractions of the town, from a summer resort standpoint, is its beautiful fifteen-acre lakeside recreation ground, Couchiching Beach Park. The park beach supplies a very desirable bathing spot for children, and the town has erected modern and well fitted bathing houses for the use of the boys and girls respectively, and here the young people amuse themselves playing in the clean sand and in the water. Lakes Couchiching and Simcoe are connected by the Narrows, a beautiful strait about a mile long. On this strait are three summer hotels and several boarding-houses, including the well-known Orchard Point Inn.

Many of the waters around Orillia afford capital angling for the speckled or brook trout. In addition to the many open waters, there is, a short distance from the town, a trout preserve, which is restocked every spring, where for a small fee the angler can make certain of capital sport. Hotel list for Lakes Couchiching and Simcoe on page 53.



On the Maganetawan River.

THE MAGANETAWAN RIVER.

Burk's Falls and Maganetawan Wharf, Ontario (170 miles north of Toronto), are points of embarkation for the trip up the Maganetawan River, which drains a territory of about four thousand square miles and offers ideal canoe trips. The Maganetawan River is just equidistant between the Muskoka Lakes and Lake Nipissing. This is a splendid sporting territory, with the wild and rugged scenery. There is a good steamboat service to the various points on the river. Great are the possibilities for canoeing opened up by the ramifications of the numerous tributaries and their connected lake enlargements. These streams can be ascended and descended in canoes amid the best of sport, while the eye is fascinated by the forest haunts. Hunting parties will be found in the Maganetawan River district every fall from every section of Canada and the United States.

KATRINE, on the Grand Trunk, four miles south of Burk's Falls, is also a favored point in this very attractive district. It is situated about one-quarter of a mile from Doe Lake, an enlargement of the Maganetawan River. Doe Lake is nine miles long and from one-half to two miles wide. The lake is a beautiful sheet of water, sheltered on all sides by gently sloping wooded hills, with good sandy beaches for bathing. There are three small islands in the lake, covered with spruce, fir and birch, ideal spots for summer homes. Black bass, pickerel and perch are plentiful, and there is good speckled trout fishing in the tributaries emptying into this lake. Good deer hunting in season. There is a boat landing for gasoline launches within 100 yards of Katrine Station. There are also ten motor boats and an ample supply of canoes on the lake which can be rented. Good boarding-houses are available. Communicate with any of the following: Mr. W. M. Roehl, Mr. Thomas Langland, Mr. Frank Nellis. Address, Katrine, Ontario. The nearest telegraph office is Burk's Falls, Ontario. (For list of hotels in Maganetawan district see page 51).

THE SEVERN RIVER.

Orillia, 86 miles north of Toronto, is the starting point for the splendid canoe trip down the Severn River, by which the waters of Lakes Couchiching and Simcoe find their way to the Georgian Bay. The Severn is about sixty miles long. Its navigation is neither very difficult nor very dangerous, yet the rapids along its course (some of them amounting almost to falls) add a spice of excitement, and when passed by portaging or by "shooting", as the case may call for, give the satisfying sense of a difficulty surmounted. Many small streams empty into the Severn, so that by the time the river has run half its course it has swelled to noble proportions, and, in its lower reaches, is in places nearly half a mile wide. One of its earlier expansions is Sparrow Lake, a favorite resort, the shores of which are lined with summer cottages and boarding-houses. Beyond this point the river passes through a wild and uninhabited region, until it empties its waters into Georgian Bay at Port Severn, near the village of



Result of Week's Hunt, Maganetawan River District.

Waubaushe. The trip from Orillia to the Bay occupies from two to six days, according to the energy with which it is pushed and the time spent in fishing, etc., by the way. The return trip is usually made by rail from Waubaushe. Canoes are the craft best suited to its navigation because of their lightness and handiness. These can be bought or rented at Orillia, where all other necessities can also be procured.

Ninety-eight miles from Toronto, on the Severn River, is Washago, which affords some of the most delightful river scenery to be found anywhere in "The Highlands". Short canoe trips, that occupy four or five hours, amid delightful scenery and in waters providing finest fishing, can be made from Washago. Riverdale Hall, located on the Severn River, about two and one-half miles from the village of Washago, is one of the most popular resorts in that district. Motor transportation is furnished guests between Washago Station and Riverdale Hall, when notice is given in advance. Address Riverdale Hall, Washago, Ont.

LAKE NIPISSING AND THE FRENCH RIVER.

Wild and rugged scenery, bracing atmosphere, splendid fishing and hunting attract large numbers of canoeists, campers and sportsmen to the Lake Nipissing and French River district of Ontario.

This region is reached through North Bay, 227 miles north of Toronto, on the Grand Trunk Railway. The steamer "Northern Belle" takes the visitor from North Bay across Lake Nipissing to the mouth of the French River, a delightful sail of two hours, and then steams down the river to Chaudiere Falls, a distance of about fifteen miles, making stops at the various camps and resorts en route.

The French River is a fascinating stream. It connects Lake Nipissing with the Georgian Bay and has a total length of more than fifty miles. There are two main channels in the river, known as the Little and Big French, and almost countless minor ones. There are scores of rapids, most of which can be run by canoeists of ordinary skill, while many small lakes can be reached and fished after short portages, the whole trip, which is one of exceptional beauty, being made with perfect safety.



House-boat Holiday, French River.

The numerous islands in the river are beautifully wooded and offer excellent camping sites. The fishing may be truly termed excellent, with maskinonge ranging from fifteen to thirty pounds, black bass running up to six pounds, and pickerel tipping the scales at fifteen pounds. During the hunting season deer, moose and other large game abound, so that the attractions of the territory are not confined to the summer season. Those who do not care for the gaieties of the usual summer resorts, but prefer the free life of the open in a virgin wilderness could find no better place.

Chaudiere Falls is one of the most favored spots in the territory of the French River and Lake Nipissing. In addition to first-class accommodation, canoes, launches and all supplies may be obtained from this resort. For reservations, rates and other particulars communicate with Mr. J. A. Clark, Sturgeon Falls, Ontario.

On Lake Nipissing, within a few miles of North Bay, is Kervin Beach, with splendid bathing, boating and fishing facilities. At this point cottages are located where home-like accommodation is available.

The French River is one of the few Canadian resorts where



Island-studded French River.

you may spend your holiday on a modern house-boat. Full particulars regarding these boats may be had on application to Mr. John Kerwin, Callender, Ontario, who will also arrange for guides, boats, launches, tents, camping outfits, etc.

Supplies of all kinds can be obtained at North Bay, many of the local merchants making a specialty of this line of business. Supplies ordered one day are delivered at your camp on the next trip of the steamboat. Camp sites may be obtained from Banner & Ostrom, or from Mr. John Ferguson, North Bay, Ontario.

The North Bay and French River Navigation Company will operate the steamer "Northern Belle" during July and August, 1918, as follows: On Mondays and Thursdays steamer will leave North Bay for French River and Chaudiere Falls at 9.30 a.m., returning to North Bay at 6.30 p.m. On Wednesdays and Saturdays steamer will leave North Bay at 1.30 p.m. and run as far as the Solid Comfort Club, on the French River, returning to North Bay at 8.30 p.m.

HAY FEVER—HOW TO AVOID AND CURE.

Thousands of people suffer annually from that most distressing ailment, hay fever, known also as "autumn catarrh", "hay asthma", and "rose catarrh". In some cases the attack comes on in June with the advent of the roses; in others, with the new-mown hay; but with the majority during the month of August. The complaint usually continues until frosty weather, and is aggravated by dust, riding in street cars, and by the pollen of hay or flowers.

Few are aware that within a few hours' journey of their own doors lie regions rich in beautiful scenery, replete with historic interest, where health and pleasure go hand-in-hand and where perfect immunity from hay fever is assured. These regions are the Muskoka Lakes District, the Georgian Bay District, the Lake of Bays District, the Temigami Region, Algonquin Park, Lake Nipissing and French River, and the Kawartha Lakes District. They are all situated in the "Highlands of Ontario", and are described in this publication.

THE THOUSAND ISLANDS AND LAKE ONTARIO.

The main line of the Grand Trunk Railway between Toronto and Montreal skirts the north shores of Lake Ontario and the St. Lawrence River and provides ready access to the many fine resort districts in that great territory. Of these the Thousand Islands district is, of course, the best known, enjoying a world-wide reputation. The Thousand Islands are reached through Kingston, Gananoque, Brockville and Prescott. From these points you may reach, by the various launch and boat services, all the portions of this summer playground.

The Thousand Islands begin near Kingston, at the outlet of Lake Ontario, and extend some forty miles down the river to Brockville. They present everything conceivable in the way of an island, from a bare rock a yard across, to islands covering many acres, some heavily wooded, some covered merely with grass, some cultivated as farms, some containing beautiful summer residences and hotels. Many islands are hilly, while others scarcely rise above the water's surface.

In a region of such a nature, boating and fishing are naturally the leading recreations, and the wide channel of the St. Lawrence River, with a current of less than two miles in the vicinity of Round Island, offers every opportunity for a



Handsome Summer Homes among the 1000 Islands of the St. Lawrence.

thorough enjoyment of these pastimes. The stream teems with the gamest of fish, such as black bass, pickerel, maskinonge, etc. Connected with the hotels are boats with experienced oarsmen. These "St. Lawrence River Skiffs", as they are called, have beauty of line, strength, comfort, lightness, ease of handling and swift sailing qualities. They seat two persons and the oarsman, and are equipped with all the appurtenances for fishing and cooking, the oarsmen being adept at both arts. (Hotel list on page 53).

THE BAY OF QUINTE.—The picturesque Bay of Quinte is one of the finest fishing grounds in Lake Ontario, and is also renowned for its bathing and swimming facilities. It is reached through Trenton and Belleville, on the main line of the Grand Trunk, and there is good hotel accommodation at these points. It has been estimated that thirty species of fish may be caught in the Bay, two of these are by common consent "game fish", the maskinonge and the black bass. Maskinonge weighing as much as fifty-four pounds have been taken here, but the usual weight runs between ten and thirty pounds. Good fish of this class are caught in consider-

able numbers. The greatest weight ever attained by the small-mouth black bass in this section is six pounds, but occasionally large-mouth black bass are taken weighing eight or nine pounds. Pike, perch or dore also provide good sport.

ST. ANNE DE BELLEVUE.—Twenty miles by the Grand Trunk Railway from the City of Montreal lies the charming village of Ste. Anne de Bellevue, on the banks of the Ottawa River, and within a short distance of the confluence of the Ottawa and St. Lawrence Rivers. Fishing in the waters at and in very close proximity to Ste. Anne's is exceptionally good. Black bass and wall-eyed pike (locally known as "dore"—meaning in French, "the golden") are the most plentiful, while the lordly maskinonge, the prince of game fish, is found in abundance during the open season; in fact, the maskinonge grounds, which lie something like seven miles below Ste. Anne's, and easy access from the village, are believed to be the very best in Canadian waters. Good hotel accommodation may be had at moderate rates.

COBOURG.—Among the resorts on Lake Ontario is Cobourg, a town of between 5,000 and 6,000 people. It is here the well-known Car Ferry Line of the Grand Trunk Railway System has its Canadian terminus, and many tourists from the United States use this route to enter the Dominion. Back from Cobourg, on Rice Lake, is Harwood and Gore Landing, 15 and 12 miles stage journey, respectively, both of which places have good hotel accommodation and afford fine fishing and shooting in season.

RESORTS ON LAKE ERIE.

PORT DOVER (eighty miles from Toronto, and seventy-four miles from Buffalo), is beautifully situated on Long Point Bay, Lake Erie, and is the summer home of hundreds of people from the cities and towns of Central Ontario, besides a goodly number from the Southern States who migrate to the North regularly every summer. The bathing beach for miles is excellent and safe. Good fishing for bass and other varieties is obtainable.

PORT ROWAN is situated at the head of Long Point Bay, one of the best bass fishing grounds of America. Here the Ontario Provincial Government obtains annually large quantities of parent bass for deposit in the lakes in the interior of the Province.

ST. WILLIAMS, situated on the Simcoe-Port Rowan branch of the Grand Trunk, is another location favored by the fisherman and sportsman in the Long Point Bay district.

PORT STANLEY, situated on Lake Erie, and reached by the Grand Trunk through St. Thomas, Ont., is the summer home of citizens of the cities of London and St. Thomas, as well as many people from Western and Central Ontario. It is an ideal spot, affording all summer resort requisites, fine beach and bathing, good fishing and boating.

AMERICAN TOURISTS DO NOT NEED PASS- PORTS TO ENTER OR LEAVE CANADA.

Eona fide tourists, being American citizens or citizens or subjects of Allied or Neutral countries, do not require passports to enter or permits to leave Canada and are assured of courteous treatment and a hearty welcome.

To facilitate departure from Canada, males between 18 and 45 entering Canada for a temporary purpose, may secure, on application to the Canadian Immigration Officer where they enter Canada, a card showing that they are not residents of Canada. Women and children do not require any identification card.

LAKE HURON AND ST. CLAIR RIVER.

The eastern and southern coasts of Lake Huron have developed wonderfully in recent years and afford ideal conditions to the tourist. The attractions in these districts appeal to families and those desiring rest and recreation in the quietude of a lakeside town or village. The bathing beaches are perfect, sandy and quite safe for children; the air is pure, the boating is capital, and in most of the places good fishing may be had.

GODERICH stands 120 feet above the level of Lake Huron, and affords fine fishing and good hotel accommodation—black



Bathing is a Delight in These Clear Waters.

bass and pickerel are plentiful. Mineral springs of medicinal value are also to be found here.

KINCARDINE is one of the most delightful locations on the shores of Lake Huron. The accommodation for summer tourists is good. Cottages may be obtained. The beach is a very fine, hard, sandy stretch, providing good bathing, absolutely safe for children.

PORT ELGIN has a population of 1,500. The beach for miles is level, hard and sandy, forming a perfect pathway for pedestrians or vehicles. There are five good hotels, one of which, Paradise Grove, is a commodious hostelry on the beach and is devoted exclusively to summer tourists. Paradise Grove is the home of the famous Paradise Mineral Water Spring nearly 2,000 feet deep.

SOUTHAMPTON each season sees newcomers who have been attracted here by its natural beauty. There is capital fishing and boating, salmon trout and whitefish predominating. The bathing beach is safe, with a fine sandy bottom. The hotel accommodation is very good. In addition to the hotels there are a large number of cottages, some connected with the hotels, others owned privately, all located on the beach and hidden among the cedars which line the shore.

OLIPHANT is fast becoming one of the most popular summer resorts on the Great Lakes. It is situated about seven miles from Wiarton, and from the latter place is easily accessible by stage or motor-car. There are in all about thirty islands in the Oliphant group within a radius of three miles, all of which are occupied by cottages and camps during the summer months. There are in addition about 75 furnished cottages situated on the mainland, many of which can be obtained at reasonable rates. Unsurpassed bathing beaches.

Five miles north from Oliphant is Golden Valley. A large boarding-house and a few cottages are situated here. For information, communicate with Mrs. John Ashcroft, Howden Vale P.O. Pike Bay, five miles north, is one of the best places on the Lake Huron shore for bass and perch fishing. Good accommodation is obtainable, boat livery, etc. Apply to Dan Stewart, Pike Bay P.O. No guides required, as the fishing-grounds are close at hand. All this district is rich in historic interest and scenic beauty, and is a veritable fisherman's paradise. Black bass, pike, lunge and lake trout are abundant. Inland lakes in this vicinity also furnish splendid fishing, including mountain and speckled trout. All necessary supplies may be obtained.

GRAND BEND, situated sixteen miles from Exeter and fourteen miles from Park Hill. Seventy-five cottages, augmented by three hotels.

SARNIA, ONT., and BEACHES—Sarnia, with its interesting surroundings, has many attractions as a summer resort, having the shipping of America's fresh-water seas passing in full view. Many delightful trips can be made from Sarnia by water. Palace steamers ply twice daily by the beautiful St. Clair River route through the St. Clair Flats, "Venice of America", and Lake St. Clair and the Detroit River to Detroit. A delightful and popular afternoon trip is to sail down the river thirty miles to Algonac, returning on the upbound steamer from Detroit. The steamers of the Northern Navigation Company give regular service to Sault Ste. Marie, Port Arthur, Fort William and Duluth, a veritable "fresh-water sea voyage" of 1,500 miles. The steamers are fast and thoroughly modern in every particular.

Lake Huron Beach is situated three miles above Sarnia, and is reached by trolley car. The Lake Huron Hotel is here located. Directly in front of the hotel is a magnificent bathing beach. Contiguous to the hotel is a large dancing pavilion. Near by is a well-kept golf course.

Lake Huron Park is an ideal camping place. Adjoining Lake Huron Park is Wees Beach, where the Grand View Hotel offers accommodation for one hundred guests. A number of cottages are also available. Woodrowe Beach, one and one-half miles north of the town of Sarnia, and accessible by trolley cars, is largely a family resort. There are thirty cottages located at this beach, with a commodious dining hall. The cottages are rented furnished at from \$125 to \$200 for the season. This is a convenient place for a summer home, with pure air, good safe bathing, fine fishing and the best of boating. The cottages are lighted by electric light and have every convenience. The golf grounds, croquet lawns, tennis court and bowling greens are free to the cottagers.



Ottawa's Great Central Architectural Group.

FOUR GREAT CANADIAN CITIES.

Montreal, Toronto, Ottawa and Quebec are among the most attractive of cities, and a splendid tour can be planned to take in these points, visiting the Dominion's summer resorts en route.

OTTAWA.—Considered with its charming surroundings, Ottawa is one of the most beautiful capitals in the world. The Ottawa River, having plunged over the Chaudiere Falls, settles and sweeps majestically past the Parliament Buildings to join the great St. Lawrence on its way to the sea. There are miles upon miles of beautiful drives, which take one to the interesting Experimental Farm, Government House and many noteworthy points. Within a short railway journey of Ottawa is the wonderful Algonquin Park of Ontario. The "Chateau Laurier", at Ottawa, built by the Grand Trunk Railway System, is undoubtedly one of the finest hotels on this continent, not only architecturally, but also in regard to its general appointments. Ask Grand Trunk agents for a copy of "Ottawa", a handsomely illustrated book, telling you all about the Capital of the Dominion of Canada.

TORONTO is the hub of all the districts in the "Highlands of Ontario". Tourists bound for "the Highlands" from the Southern, Middle and Western States all reach their destination through Toronto, either by rail from the border gateways or by the many boat lines that ply the waters of Lake Ontario. In itself, Toronto is full of interest to the sight-seer.

MONTREAL, the commercial metropolis of the Dominion of Canada, is situated on the south shore of the island bearing the same name, and at the base of a beautiful eminence known as Mount Royal, from which both the city and island derive their name. The population to-day is about 700,000. Montreal offers unlimited attractions for sight-seeing and visiting the districts that are part of the history of the American continent.

QUEBEC.—Thousands of visitors make the journey to the historic City of Quebec each year. Its history dates back to the times of Jacques Cartier, who discovered Canada in 1535, and to the regime of the great Champlain, who founded the city in 1608, and there are on every hand landmarks of the stormy days when two nations battled for supremacy. Many of the noted litterateurs of the world have written volumes descriptive of this garrison city.



On the Maine Coast at Portland.

MAINE AND NEW HAMPSHIRE.

The main line of the Grand Trunk Railway System between Montreal and Portland, Maine, penetrates the heart of the White Mountains, and serves many lovely districts. The famed Dixville Notch region of the White Mountains is reached through North Stratford Station, and is a resort of much beauty and romantic interest. "The Balsams", at Dixville Notch, is one of the best known resorts on the continent.

Gorham, N.H., is another point of great beauty. It nestles in the valley formed by the confluence of the Androscoggin and Peabody Rivers, and is commonly known as "The Gateway to the White Mountains". This region offers many attractions to the fisherman and hunter. Good hotel accommodation may be had here.

Two miles southwesterly of the main line of the Grand Trunk, connected with South Paris Station by a branch line, lies Norway, the centre of a magnificent sporting and fishing region. There are good hotels. Lake Penneesseewassee, at Norway, is a beautiful sheet of water six miles long. The lake is well stocked with land-locked salmon (averaging three to four pounds) and speckled trout. Good black bass fishing in July and August. Reliable guides can be obtained at any time. Some of the best bass fishing in Maine is at Sand Point, another small stretch of water in the vicinity of Norway.

The Rangeley Lakes, of Maine, are reached through Bethel Station by stage and steamer. They are among the most celebrated resorts of America. Good hotel accommodation can be had at Bethel, the Bethel Inn being one of the most attractive hostelries in the New England mountain country. A good nine-hole golf course is maintained in connection with Bethel Inn. It is an all-year-round resort, as is also Maple Inn, at Bethel.

At Danville Junction automobiles meet the trains to carry passengers to the famous Poland Springs House, five miles distant, this being the favored route for reaching this resort. The Poland Springs House is built on one of the most commanding sites for sixty miles around, and stands at an altitude of 800 feet above sea level. The grounds surrounding this magnificent summer hotel contain expansive lawns, beau-



The Bethel Inn, Maine.

tiful pine groves and over 1,500 acres of the most picturesque territory in the East, while the Poland Springs water has world-wide fame.

PORTLAND and CASCO BAY.—Portland is the eastern terminus of the Grand Trunk System. This "beautiful city by the sea", as Longfellow so poetically called it, is the gateway to innumerable natural beauties and cool retreats. Seldom has a city such surroundings of sea and shore.

Portland and Casco Bay form the Utopia of those with moderate means; nowhere will a dollar procure more of seaside pleasures. Hotels in city and on the islands in the bay are numerous, and there are large numbers of boarding-houses. Old Orchard, Kennebunkport and other resorts are reached through Portland, being linked up with the city by electric car service and steam railroad.

Write to any of the Grand Trunk agencies mentioned in this book for a copy of "Portland, Casco Bay and Maine Resorts", which gives full information regarding the mountain and sea coast territory of Maine and New Hampshire, including hotels, rates, etc.

VERMONT AND LAKE CHAMPLAIN RESORTS.

The summer resorts among the Green Mountains of Vermont and along the shores of Lake Champlain are among the most popular of the summer resorts of New England.

The Green Mountain Range extends the whole length of the State of Vermont, and at least one hundred of its peaks exceed 2,000 feet in height. There are in Vermont approximately four hundred lakes and ponds, most of them in beautiful mountain settlements. Along the western border of the State is Champlain, the queen of American lakes, lying in a valley between the Green and Adirondack Mountains. Nothing in America surpasses in scenic loveliness Lake Champlain and its mountain backgrounds. With the exception of the Great Lakes it is the largest navigable body of fresh water in the United States, being 118 miles long, and no lake in the western hemisphere equals in historic associations Lake Champlain and its tributary, Lake George.

Vermont is void of the extreme heat of the semi-tropical parts of the country, the nights are always cool and the scenery is unexcelled. There are numerous first-class hotels at

reasonable prices, and numerous farms and village homes where city people are entertained every year. Vermont is particularly well qualified to furnish charming sites for summer homes at very moderate prices.

There is also excellent trout fishing in the numerous mountain streams, and the best of bass and other game fish in Lake Champlain. In the days when the Indians were masters of all this country, what is now Vermont was a famous fishing and hunting region for the control of which various tribes contended. It still remains one of the best fishing and hunting sections of the country. Brook trout, black bass, pike, perch, pickerel, pout, maskinonge, land-locked salmon, lake trout and whitefish are some of the principal varieties. Many deer are shot every fall during the open season. The State Fish and Game Commissioner has estimated the annual value of the fish and game taken in Vermont at a sum exceeding half a million dollars.



Lake Pennesseewassee, Norway, Me.

Complete information in regard to all of the resorts in Vermont and along the shores of Lake Champlain, on or adjacent to the Central Vermont Railway, is given in "SUMMER HOMES" publication, issued by the Central Vermont Railway. It can be had for the asking at the principal ticket agencies of either the Grand Trunk or Central Vermont Railway, or it will be mailed to any address on receipt of four cents postage for mailing.

LAKE RESORTS OF MICHIGAN AND INDIANA.

Michigan, like Canada's beautiful Province of Ontario, is a veritable "Land 'o Lakes". Surrounded on three sides by a part of the chain of the "great lakes", it also has within its borders lesser bodies of water, among the most attractive of which is Diamond Lake, one mile from Cassopolis, a station on the Grand Trunk, 125 miles east of Chicago, 25 miles east of South Bend, and 50 miles west of Battle Creek. It has a shore line of nearly ten miles. A considerable portion of its frontage is well wooded with substantial trees.

The waters of the lake are well stocked with fish, comprising large and small-mouthed black bass, pickerel, blue gills, wall-eyed pike, perch and a large variety of the smaller fish.

Sail and rowboats are at the service of guests of the hotels, and several steamers make regular trips between the various resorts on the lake. The hotel accommodation is good.



You may Paddle from Lake to Lake without a Portage.

THE BEACHES, Port Huron. Easily reached from Canadian as well as United States points, the Beaches, Port Huron, comprise, Edison, La Salle, Holland, Lakeside, Huronia Beach Camp, Cratiot, Keewahdin and Lakeland beaches, with upwards of 300 cottages, both public and private. There are also commodious hotels, including Windermere, the Four Gables, and the new Gratiot Inn. The Gratiot Inn is located about half a mile north of the popular Windermere Hotel, on Gratiot Beach, has 125 large airy rooms, the major portion of these giving a full view of Lake Huron, which is only a stone-throw from the hotel.

All cottages and hotels at the Beaches front directly on the lake, and there is a broad sandy beach where the children can romp and play, bathing and boating with perfect safety. Golf, tennis, baseball and dancing are among the other attractions offered. Many cottages can be rented completely furnished. Further information regarding any of the resorts at Port Huron can be obtained by addressing Secretary, Port Huron Summer Resort Association, Port Huron, Mich.

STAG ISLAND, the children's paradise, is one of the most delightful and beautiful summer resorts on the St. Clair River, situated six miles below Port Huron and Sarnia. All the large and small steamers en route between Lake Erie and Lake Huron pass Stag Island. Twenty-one cottages and two hotels, facing the river, will accommodate 250 guests.

CANADIAN NATIONAL EXHIBITION.

The city of Toronto is the objective point for all traffic for the "Highlands of Ontario"—a beautiful city full of interest to the tourist and sightseer. Each year, during the latter part of the summer, Canada's National Exhibition, which is considered to be the best annual affair on the continent, is held here, and is well worth a visit. In 1918 the Exhibition will be held from August 26th to September 7th.

BIG GAME HUNTING.

The extension of railway lines develops new fields for the hunter, the fisherman and tourist. With the construction of the Transcontinental Railway from Quebec west to Winnipeg, and the Grand Trunk Pacific from Winnipeg to the Pacific Coast, vast new districts have been opened up where game is found in abundance. There is excellent moose hunting along the line of the Canadian Government Railways, in Quebec, Ontario and Manitoba. The prairie portions of Manitoba, Saskatchewan and Alberta do not provide big game hunting, but marvellously good shooting will be found for wild duck, geese, prairie chicken and partridge.

Jasper National Park is situated on the eastern slope of the Rocky Mountains in Alberta, its western boundary being the Province of British Columbia. The Park itself is, of course, a game reserve. Hunting parties go out from Jasper and the guides bring them without fail to grizzly, black bears, moose, caribou, mountain sheep and goats. Jasper is a great mountain resort for tourists, and is usually headquarters for those undertaking Alpine climbing or exploration trips into the mountains.

It is the boast of British Columbia that with the exception of musk ox and antelope, that Province contains every species of game that exists on the continent.



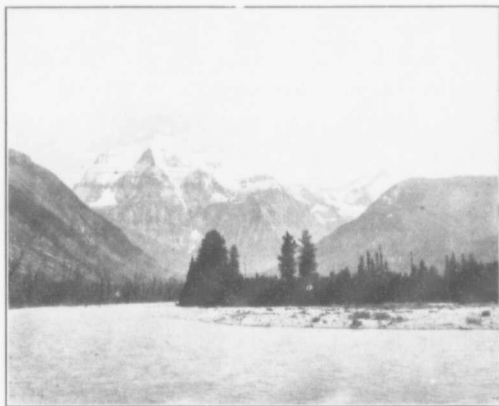
Canadian Rockies Mountain Goat, Yellowhead Pass District.

Adjacent to Jasper National Park is the Mount Robson Park, owned and controlled by the Province of British Columbia, and outside the park is a similar game country to that existing on the Alberta side of the mountains. Mount Robson is the headquarters for hunters who go into this territory largely for grizzly bear, mountain sheep and goats. On the main line of the railroad through to Prince Rupert there are many other great game districts. A sportsman who desires to hunt in this territory should make his arrangements as far in advance as possible. Write to R. C. W. Lett, Tourist Agent, Grand Trunk Pacific Railway, Winnipeg, Man., for full particulars; also see "North American Alps" publication, obtainable on request from Grand Trunk agents.

One of the most famous big game districts of British Columbia is the Cassiar. This is reached by way of Grand Trunk Pacific Railway to Prince Rupert, thence steamboat to Wrangell, Alaska. From Wrangell, launch service is available up the Stikine River to Telegraph Creek, the headquarters for the district. In the Cassiar district, the mountain sheep offer great trophies and the region is also noted for Osborn's caribou. Moose reach a great size and are plentiful, as are black and grizzly bear. A hunting trip into the Cassiar country requires a longer time and entails greater expense than to the districts nearer the main line of the Grand Trunk Pacific Railway.

The Atlin district, in the extreme northwest of the Province, in the angle between Alaska and the Yukon, has some splendid sheep ranges, and moose and bear are plentiful. Atlin is reached by way of Grand Trunk Pacific Steamships to Skagway, thence White Pass & Yukon Route Service.

On Vancouver Island, deer are plentiful, and there is excellent grouse, quail and pheasant shooting. One of the novelties in hunting, to be obtained here, is cougar. Excellent shooting is easily obtained within a short distance of Victoria, the capital of the Province and the chief tourist centre of the North Pacific Coast. The Grand Trunk Pacific Railway and Steamships offer frequent service to Victoria.



Mount Robson (13,068 feet), Highest Peak in Canadian Rockies.



Camp Wabi-kon Summer Resort, Timagami.

VACATIONS WITH THE CAMPING CLUBS.

To those who love outdoor life there can be no better way of spending a vacation than in one of the summer camps which have been established in the resort territory served by the Grand Trunk in the "Highlands of Ontario" and in the State of Maine. There are camps for adults, for boys and for girls. They are admirably situated and directed. Under careful guidance trips are made from headquarters through river and lake regions teeming with game fish, and the guests are placed in touch with Nature in the truest sense of the term. Reference, necessarily brief, is made here to these camps:

THE KEEWAYDIN CAMP, Timagami, Ontario.—One of the most famous, as well as one of the oldest camps on the continent, is Keewaydin, an American camp in the heart of a Canadian wilderness. This camp, which was founded in 1893, is on Devil's Island, in Lake Timagami, in the middle of Timagami Forest Reserve. To this camp come every year a large number of American boys—principally young fellows in the preparatory schools—from a dozen large cities and from smaller cities as far west as Minnesota and as far south as Florida. The camp is under the management of Judge A. S. Gregg Clarke, Harvard, 1893, and he is assisted by a staff composed of instructors in a dozen or more of the leading eastern preparatory schools—men who have had long experience in the care and training of boys and who are thorough campers. The boys learn how to pitch a camp, how to cook over a camp-fire, how to travel, sleep and take care of themselves in the woods. Illustrated booklets, giving all particulars, may be had from the Director, Hon. A. S. Gregg Clarke, M.N.G.S., the Gunnery School, Washington, Conn.

WABI-KON CAMPING CLUB, Timagami, Ontario, appeals particularly to adult guests who can here enjoy floored tents, comfortable dining-halls, and all the novelty and freedom of camp life. It is controlled by the Wabi-Kon Camping Club and is situated on Timagami Island, some three miles from Bear Island. It occupies the historic site of the old Hudson's Bay Post, where over a hundred years ago the dusky Ojibways bartered their furs for the "Fire Sticks" and "Long Knives" of the white man. With the exception of the main building, the camp is entirely under canvas, and consists of the following: Large club-tent where guests are provided

with amusement when not engaged with the pleasures of the canoe and the fishing rod; a well-furnished dining tent with an open stone fireplace, well-equipped cooking quarters and a village of sleeping tents. Walled and floored tents only are used, and all are fitted up with a view to the comfort of guests. Acetylene gas is used for lighting purposes. Guides, rowboats, canoes and gasoline launches are supplied. The camp is in close proximity to the best fishing grounds on the lake, and is situated on a very fine sandy bathing beach. It is conducted so as to maintain a high standard of excellence in cuisine and service. For terms, reservations and illustrated booklet apply to Miss L. A. Orr (before July 5th), 250 Wright Avenue, Toronto; (after July 5th) Wabi-Kon Summer Resort, Timagami P.O., Ontario, Canada.

CAMP TIMAGAMI is situated in the south arm of Lake Timagami, Ontario, upon an island known to the Indians as "Mitawanga", "the island with sandy beaches", and is more generally known as Cochrane Camp. This camp, which was established in 1900, has accommodation for fifty boys. Younger boys form a separate division and are looked after with special care. The camp has some accommodation for adult friends or relations of the boys, who prefer the freedom of camping to the more conventional hotel life. Tents for adults are pitched away from the boys' quarters, ensuring privacy and quietness. All tents have board floors, with outer fly, and are thus comfortable in all weathers. Outfits for side-trips, skiffs or canoes, fishing accessories, etc., are provided from the camp stock. A daily mail service is conducted by the camp launch "Nancy". This camp had the honor of accommodating and entertaining Their Excellencies the Duke and Duchess of Devonshire, with members of their family and retinue during the visit of the vice-regal party to Timagami in 1917. An illustrated prospectus containing detailed information may be had upon application to A. L. Cochrane, Upper Canada College, Toronto, or (after June 25th) Timagami P.O., Ontario.

THE PATHFINDER CAMPS FOR BOYS, Source Lake, Algonquin Park of Ontario, have a staff composed of men



The Mid-day Rest on the Portage.



Camp Oxford Boys, Oxford, Me.

who are making the training of boys their life-work, assisted by a physician, college students and guides. There is a trained man in charge of every five boys. The encampment is divided into two distinct camps, the "Bucks" for the older boys, and the "Beavers" for the younger boys. Descriptive booklet, with list of patrons, from Franklin J. Gray, B.P.E., Director, West High School, Rochester, N.Y.

CAMP MINNE-WAWA FOR BOYS, is located on the Lake of Two Rivers, in Algonquin Park of Ontario. Its elevation and an abundance of pine and balsam combine to make it healthful to the highest degree. A commodious building has been built for dining-room and congregating purposes. A boat-house and a couple of open camps are much used. Mr. W. L. Wise, Ph.B., head of the English Department of the Bordentown Military Institute, Bordentown, N.J., is owner and director of the camp. He will be glad to send to anyone requesting it a copy of an illustrated booklet describing the camp and its method of operation.

CAMP WAUBUNO, Algonquin Park of Ontario, is a boys' summer camp, which has its headquarters on a rocky, well-wooded island in beautiful Cache Lake. From Camp Waubuno frequent short and long canoeing and camping trips are taken to various parts of the park under the careful guidance of men who have made the training of boys their life-work. The Grand Trunk Railway System penetrates this region and crosses the water routes so frequently that communication is readily obtained with the outside world. Camp Waubuno is under the personal direction of George G. Brower, A.M., Instructor in Mathematics, State Model School, Trenton, N.J., to whom letters of inquiry may be addressed.

CAMP ON-DA-DA-WAKS, on Golden Lake, Ontario, on the Ottawa Division of the Grand Trunk, is a summer camp for boys, 12 to 19 years of age, conducted during the month of July by the Boys' Division of the Young Men's Christian Association of Ottawa. Excellent leaders are secured and placed in charge of each tent of seven boys. Canoe trips and over-night camps, hikes and trips through the surrounding country are taken each week. Track and field athletics are

part of the day's programme. Every boy is given an opportunity to take up courses in First Aid, Signalling, Camp Craft, Canoeing, Swimming, Diving, Life-Saving, etc. Illustrated booklet may be secured from the Camp Director, Y. M. C. A., Ottawa, Ontario.

CAMP MAC, for boys, is situated on the southern arm of beautiful Georgian Bay, Ontario, about four miles from the historic town of Penetang. It is under the personal direction of Mr. Henry J. Baker, of Toronto, who established this camp in 1887. The applications of boys between the ages of ten and fifteen will be accepted. Boys who are not known to the director must present satisfactory references. Personal conference with parents is desired whenever possible. A booklet may be had by addressing the Director, Mr. Henry J. Baker, Brown School, Toronto, Canada. After June 25th address Mr. Baker at Camp Mac, Penetang, Ontario.

CAMP KAGAWONG, for boys, is situated on Balsam Lake, Ontario, which is the highest of all the beautiful Kawartha Lakes, being 300 feet above Georgian Bay. The camp lies on a 380-acre tract of land, part of which is farmed, the rest remaining a natural woods of balsam, spruce and pine. The camp is affiliated with the Royal Life-Saving Society. Special attention is given to all forms of swimming and instruction in the life-saving methods of the Society. Two experienced Physical Directors are constantly on hand to give advice and personal instruction. The camp is under the direct supervision of Mr. E. A. Chapman. A booklet will be mailed upon addressing Mr. E. A. Chapman, St. Andrew's College, Toronto.

CAMP OTTER, Lake of Bays, Ontario, is a camp for boys which has been in operation since 1909. It is situated on Otter Lake, a small and very picturesque lake about two miles from Dorset. The boys (number limited to thirty) sleep in tents with projecting flies and board floors. A log cabin, with wide verandahs (one of which is screened-in for eating purposes), is the centre of camp activities. A converted lumber camp building affords facilities for a gymnasium and indoor games when the weather is inclement. The Director, C. V. P. Young, is Professor of Physical Education at Cornell University, and has associated with him as camp physician, Dr. A. T. Kerr, who is in charge of the Cornell Medical College, at Ithaca. For full information address C. V. P. Young, Ithaca, N.Y.



From Camp Minne-wawa, Algonquin Park.



Camp Otter, Lake of Bays.

RAYNOR ISLAND CAMP is beautifully situated on an island of thirty-five acres in the Lake of Bays, Ontario. It is a camp accommodating fifteen or twenty adult visitors. The camp consists of a main house, and sleeping quarters are under canvas, or in small comfortable bungalows, as found preferable. Elevation 1,000 feet; good fishing, boating, bathing, etc. Guides readily available. Apply for rates, etc., to Miss M. Spaulding, 226 Central Park West, New York City.

CAMP BILLIE BEAR.—Eighteen miles from Huntsville, on Bella Lake, Lake of Bays region of Ontario, is situated this comfortable log cabin camp, with accommodation for twelve people. Some of the finest black bass fishing is offered in this locality, as well as salmon trout fishing. For further information write to Mrs. D. A. Jackson, Antioch P.O., Muskoka, Ontario.

PUKWANA LODGE is situated on a thirty-acre island on the French River, in Ontario, about 250 miles directly north of Toronto, in a region offering the best of sport. A physician and swimming instructor are always located at camp. The camp membership is restricted to fifty, made up of young men and boys not under fourteen years of age. Write to Mr. F. W. Breimier, Wharton School, University of Pennsylvania, Philadelphia, Pa., for camp book.

KAMP KIWASSA, Oxford, Maine, is a health resort for business and professional men. It is situated on Pleasant Lake, eight miles from Oxford Station, on the Grand Trunk. Guests dress in the most simple style in order to enjoy more fully rest and freedom from care. Fine boating, canoeing, tennis, fishing, motor-boating and excellent table. Camp opens July 1st, 1918. Rates, \$50.00 per week. Address, A. Schatzell, 246 West 12 Street, New York City. After June 15th, Kamp Kiwassa, Oxford, Maine.

KAMP KOHUT, Oxford, Maine, is a summer school for boys, situated on Lake Thompson. The camp property covers about 350 acres, with a frontage on the lake of about one and one-half miles. It is excellently equipped and can accommodate 150 boys in its large tent colony, while it has a group of buildings for indoor amusements, including a large recreation hall and a hospital building in case of illness. Its athletic field compares favorably with those of the leading colleges, organized athletics forming the main feature of the camp's work. Long tramps and canoe excursions through the beautiful New Hampshire and Maine territory are encouraged. Part of each morning is devoted to studies under capable

teachers. A competent physician and trained nurse are in constant attendance. The camp season extends from the first of July to the second week in September. The boys range from ten to eighteen years of age. For further particulars write to Dr. G. E. Kohut, 302 West 87th Street, New York City, N.Y.

CAMP OXFORD, Oxford, Maine, a summer camp for boys, is situated on beautiful Lake Whitney, seven miles from the famous Poland Springs. The season opens June 30th and closes August 30th. Camp Oxford has one hundred acres of land, with attractive buildings and varied equipment. Camp Oxford may be reached through Portland or Montreal, via the Grand Trunk Railway System. Arrangements are made for meeting boys either in Portland or Boston. Boys from the West may take the Grand Trunk at Chicago, with baggage checked direct to Oxford. Inquiries regarding further details and application for membership should be addressed to Adelbert F. Caldwell, A.M., Oxford, Maine.

PLEASANT LAKE CAMP, Oxford, Maine, is a camp for boys, and lies in one of the most picturesque parts of Maine. It is a short distance from Oxford Station and within easy reach of the world-famous Poland Springs House and the well-known Summit House. Pleasant Lake Camp contains an area of one hundred acres. There are over sixty acres of woodland. The camp has a fine sandy beach, which stretches for a third of a mile along Pleasant Lake. For particulars apply to Dr. M. Thorner, 305 East 161st St., New York City.

CAMP TRUDA, Oxford, Maine, is a camp for girls. It is under the personal care of Mrs. Thorner. For particulars apply to Mrs. M. Thorner, 2672 Boulevard, Jersey City, N.J.

MOREDOLPHTON CAMP, the largest of the many Pittsburg-Canadian camps, lies on the north side of Gloucester Pool, in the Severn River, about seven miles north of the town of Port Severn, Ontario. The camp is an offshoot of the old Keystone Camp, and originally was a small family party. More and more friends, however, kept coming into the camp and finally a permanent association was formed and the camp opened to a limited number of guests. The Moredolphtons live pretty close to Nature, but each year have added to the comfort and equipment of the camp. Most of the campers live in tents, while the main building, with the whole first floor open, but screened, serves as a dining-room. The sports are practically just the natural ones, fishing, boating and canoeing; thus far the fishing has held out remarkably well. For further particulars apply to Robbin B. Wolf, 424 Frick Building, Pittsburg, Pa.

CLUB VISITORS' SHOOTING AND FISHING OUTFITS.

Any organized Shooting or Fishing Club, which has duly obtained shooting or fishing privileges in any Province in Canada, may deposit with the Department of Customs at Ottawa, a guarantee, as security for the due exportation or payment of duty on the sporting outfits brought into Canada temporarily, for their own use, and not for gain or hire, by members of the club resident outside of Canada.

A special Ticket of Membership, signed by the Secretary of the Club, and dated within one year from the time of its presentation to the Customs Officer, may be accepted by such officer as evidence that the person presenting the ticket is a visiting member of such club, resident outside of Canada.

Visiting members (non-resident in Canada) of any Shooting or Fishing Club which has deposited a guarantee approved by the Minister of Customs, as provided, may bring with them such guns, fishing rods and sporting outfit, as they require for their own use and not for gain or hire, conditional on exportation within ninety days from the time of entrance, upon depositing a Ticket of Membership signed as before mentioned, and furnishing to the Customs Officer at the Port of Entry in Canada a report (in duplicate) signed by him and containing a description of the articles comprised in his outfit, and giving the value thereof. Provided, however, that DUTY SHALL BE PAID ON AMMUNITIONS AND PROVISIONS brought in with such outfit.

GOOD FISHING AND H

PLACE See Hotel List, pages 51-55	STREAMS AND LAKES
a. Barry's Bay, Ont.	Madawaska River, Lakes Carson and Kaminiske
c. Barrie, Ont.	Little Lake
e. Belleville, Ont.	Bay of Quinte
d. Bracebridge, Ont.	Muskoka River
e. Brule Lake, Ont.	Lakes Brule, Macintosh, Wolf and White Trout. Petewa Rivers
e. Callander, Ont.	Lakes Nipissing, Stormy, Clear, Bass and Rentouce
c. Chatham, Ont.	Mitchell Bay and Rondeau
e. Cobourg, Ont.	Rice Lake
c. Coboconk, Ont.	Lakes Mud Turtle, Four Mile, Moore's, and Balsam and St. Lawrence Rivers
c. Cornwall, Ont.	Burnt and Gull Rivers, also numerous lakes
d. Fenelon Falls, Ont.	
e. Gananoque, Ont.	Lakes Gananoque, South and Charleston, and St. Lawrence
c. Goderich, Ont.	Lake Huron, Maitland River
e. Haliburton, Ont.	Gull River, Burnt River, also numerous small lakes in v
c. Island Pond, Vt.	Island Pond and Seymour Lakes
c. Iroquois, Ont.	St. Lawrence River
d. Kearney, Ont.	Sand Lake and Maganetawan River
c. Kincardine, Ont.	Lake Huron
d. Kinmount, Ont.	Gull Lake, Miners Bay and Swamp Lake
a. Kingston, Ont.	Lakes Loughboro, Cranberry, Dog, Hart, Round, Rock
(Battersen, Ont.)	Round Pond, North Pond and South Pond
c. Loches Mills, Me.	Lake St. Francis and St. Lawrence River
a. Lancaster, Ont.	Otonabee River, Kitchenooka and Kawartha Lakes
e. Lakefield, Ont.	
c. Lindsay, Ont.	Seugog River, also near Lakes Cameron, Balsam, S
	Buckhorn
c. Gravenhurst, Ont.	Muskoka Lake, Pine Lake, Pidgeon Lake and River con
a. Madawaska, Ont.	Madawaska and Opeongo Rivers and Aylen Lake
e. Midland, Ont.	Georgian Bay, Sturgeon Bay, Little Lake and Wye River
a. Mille Roches, Ont.	St. Lawrence River
e. Norway, Me.	Lake Pemessuna
c. Norton Mills, Vt.	Big and Little Averill, Least and Wallis
e. Orillia, Ont.	Lakes Couchiching, Simcoe, St. John and Bass
c. Owen Sound, Ont.	Georgian Bay and Sydenham River
e. Oxford, Me.	Lakes Thompson, Whitney, Hogan and Pleasant, Mead and Minister Brooks and Little Androscoggin River
d. Port Dover, Ont.	Lake Erie
d. Port Elgin, Ont.	Saugeen River and Chesley Lake
d. Port Perry, Ont.	Seugog Lake
a. Port Rowan, Ont.	Long Point Bay
a. Ravenworth, Ont.	Cashman River
a. River Beaudette, Que.	River Beaudette and Lake St. Francis
c. Rockland, Ont.	Ottawa River
b. Royal Muskoka, Ont.	Lakes Rosseau, Joseph, Bruce Bass Skelton, and river co
b. Rosseau, Ont.	Lakes Rosseau, Joseph, Blackstone, Turtle, and river co
c. Rouses Pt., N.Y.	Lake Champlain
a. Severn, Ont.	Severn River and Sparrow Lake
b. South River, Ont.	Lakes Couchie, South, Trout and Round
d. Southampton, Ont.	Lake Huron and Saugeen Rivers
d. Sprucedale, Ont.	Doe Lake
a. Stayner, Ont.	Nottawasaga Bay and River
d. Stark, N.H.	Christine Lake, South Pond, Mill Brook and Nash Stre
e. Ste. Annes, Que.	St. Lawrence and Ottawa Rivers
c. Summerstown, Ont.	St. Lawrence River
d. Sutton, Ont.	Lake Simcoe
a. Vaudreuil, Que.	Ottawa River
d. Whitney, Ont.	Lakes Long, Hay, Poverty, Opeongo and Madawaska R
d. Warton, Ont.	Georgian Bay and numerous inland lakes

- a. Parties should take necessary camping equipment.
- b. Guides and canoes can be obtained on advance notice.
- c. All camping equipment, including tents, provisions, blankets, cooking utensils, can be rented or purchased.

HUNTING LOCATIONS

FISHING AND HUNTING

See pages 58-66 for open seasons, etc.

	Bass and Trout. Deer and Partridge. Bass and Cat Fish. Rabbits and Partridge. Maskinonge, Pike, Black and Rock Bass, Ducks, Snipe and Plover. Pickerel. Deer.
Petewawa and Pine	Speckled Salmon, Black and Grey Trout. Bass, Speckled and Salmon Trout, Lunge. Ducks, Partridge and Deer. Black Bass, Pickerel and Pike. Ducks.
and Gull River	Black Bass. Ducks. Black Bass and Maskinonge. Deer and Partridge. Black Bass, Sturgeon, Dore, Pickerel, Perch. Black Bass—small and large mouth, Maskinonge. Ducks and Partridge.
Lawrence River	Black Bass, Pike, Oswego Bass, Perch and Maskinonge. Duck, Plover, Snipe, Blue Rail and Marsh Chicken. Black Bass, Perch, Pickerel.
es in vicinity	Speckled Trout and Bass. Bear, Deer and Partridge. Black Bass, Trout and Lunge. Deer and Partridge. Bass, Pickerel, Perch and Pike. Speckled and Salmon Trout. Deer. Perch and Lake Trout.
Rock and others	Bass and Trout. Ducks, Deer. Black Bass and Lake Trout. Speckled Trout, Black Bass and Pickerel. Deer, Moose, Bear. Bass, Pike, Perch and Sturgeon. Duck, Snipe and Partridge. Maskinonge, Bass, Salmon and Mountain Trout. Deer, Bear, Fox, Hare, Muskrat, Coon, Ducks and Partridge.
am, Sturgeon and er connections	Bass and Maskinonge. Bass, Lake Trout, Pickerel and Brook Trout
e River	Black Bass, Speckled Trout, and Gray Trout. Red Deer, Partridge White Fish, Pike, Bass, Gray and Speckled Trout. Ducks and Rabbits.
	Bass and Pickerel. Speckled Trout, Black Bass, Perch and Pickerel. Partridge and Woodcock. Trout.
	Trout, Bass, Herring, Pickerel and Perch. Ducks and Partridge. Bass and Trout.
Meadow, Greeley River	Salmon and Lake Trout, Togue, Pickerel, Black Bass, White Perch, Fresh Water Cuck and Brook Trout. Deer, Partridge and Woodcock.
	Bass, Herring, Pickerel and Perch. Salmon Trout, Pike and Bass. Partridge, Ducks and Rabbits. Bass and Maskinonge. Ducks. Bass and Pike. Ducks. Speckled Trout.
river connections ver connections	Maskinonge, Dore, Bass, Pike. Ducks, Partridge, Plover and Hare. Speckled Trout and Black Bass. Ducks. Bass, Lake Trout, Pickerel and Brook Trout. Bass, Pickerel, Salmon Trout and Brook Trout. Pike, Pickerel, Black Bass and Maskinonge. Snipe, Ducks, Plover Bass, Pickerel and Maskinonge. Speckled and Lake Trout. Deer and oMose.
a Stream	Black Bass and Perch. Partridge, Ducks and Rabbits. Bass, Pickerel. Deer. Bass, Pickerel and Pike. Ducks, Partridge and Hares. Trout, Black Bass and Togue. Partridge, Bear, Fox and Deer. Maskinonge, Dore, Black Bass, Perch and Pike. Ducks, Partridge and Rabbits.
aska River	Black Bass and Perch. Ducks. Maskinonge, Trout, White Fish and Bass. Speckled Trout, Black Bass, Pickerel and Maskinonge. Deer and Hare. Grey Trout. Deer and Wild Ducks. Black Bass.

- d. All camping equipment except tents can be rented or purchased.
e. Obtain all provisions at Algonquin Park.
f. Obtain boats from Fenelon Falls.

GOLF COURSES

Located on the Grand Trunk Railway System, at points dealt with in this publication.

Name of Resort	Name of Golf Course or Club	Number of Holes	TOTAL Length in Yards	Bogey	Par.	Distance in Miles from Centre of Town or Leading Hotel	Means of Conveyance between Hotel and Links	Nearest Railway Station
Beumaris, Ont.	Beumaris Golf Club	18	4600	75	68	$\frac{1}{4}$ mile	Walk	Muskoka Wharf, Ont.
Barrie, Ont.	Barrie Golf Club	9	2535	38		$\frac{3}{4}$ "	Walk or drive	Barrie, Ont.
Britannia, Ont.	Britannia Golf Club							
Cobourg, Ont.	Cobourg Golf Club	9				$\frac{1}{4}$ "	Walk or drive	Cobourg, Ont.
Collingwood, Ont.	Georgian Bay Golf Club	9	3026	42	38	1 "	"	Collingwood, Ont.
Eastbourne, Ont.	Eastbourne Golf Club	9	2010	38	35	6 "	Radial Railway	Jackson Pt., Ont.
Lake of Bays, Ont.	Lake of Bays Golf Club	9	3325			1 "	Boat	Huntsville, Ont.
Muskoka Lakes, Ont.	Royal Muskoka Golf Club	9	2850	38		$\frac{1}{8}$ "	Walk	Muskoka Wharf
Norway Point, Ont.	Norway Point Golf Club	9	2299	37		$\frac{1}{2}$ "	Walk or boat	Huntsville, Ont.
Orillia, Ont.	Couchiching Country Club	9				$\frac{1}{2}$ "	Walk or drive	Orillia, Ont.
Port Huron, Mich.	Port Huron Golf and Country Club	9	3350	45		$\frac{1}{4}$ "	Street Railway	Port Huron, Mich.
Rosseau, Ont.	Rosseau Golf Club	9	2150			$\frac{3}{4}$ "	Walk	Muskoka Wharf
Sarnia, Ont.	Sarnia Golf Club	9	2865	39	35	1 "	Street Railway	Sarnia, Ont.

FISH AND GAME LAWS.

The Laws Summarized Here are Subject to Change without notice.

PROVINCE OF ONTARIO

Any non-resident of the Province of Ontario desiring to angle in the waters of the Province must first obtain an angling permit, the fee for which shall be \$2.00 per rod, said permits to be good until the 31st of December of the calendar year and must be produced by the person angling when required to do so by the Overseer or other official authority. When remaining on their own boats and not temporarily residing at hotels or boarding-houses, or living in their own cottages, the fee is \$5.00 per rod. The holder of such permit shall be entitled to take with him, when leaving the Province, the lawful catch of two days' fishing, when the coupon accompanying the permit is attached to the receptacle containing the fish, otherwise the fish will be liable to confiscation. These regulations do not apply to the following waters: Niagara River, Detroit River, River St. Clair and St. Mary's River opposite the State of Michigan. Non-residents fishing in these waters will be charged a fee of \$2.00 per rod; whether residing in the Province or fishing from their own boats or yachts.

Permits may be obtained from officers of Game and Fisheries or from the Deputy Minister of Game and Fisheries, Toronto, Ont. Persons acting as guides for hunting or fishing parties must take out licenses.

FISHING—OPEN SEASON.

Bass.—June 16th to December 31st (vicinity of Point Pelee, July 16th to May 23rd following year), both days inclusive. Under ten inches must be returned to the water uninjured. Not more than eight may be caught in any one day by any person.

Salmon Trout.—November 6th to October 4th following year, in waters where fishing with gill nets is not permitted, but in waters other than those of the Great Lakes, Georgian Bay, North Channel, where commercial fishing with gill nets is permitted, the open season is from December 1st to October 4th of the following year, both days inclusive. All salmon trout under two pounds must be returned to the water uninjured.

Lake Trout and Gray Trout.—December 1st to October 31st in waters where fishing with gill nets is not permitted, but in waters other than those of the Great Lakes, Georgian Bay, North Channel, where commercial fishing with gill nets is permitted, the open season is from December 1st to October of the following year. All lake trout under two pounds must be returned to the water unharmed.

Maskinonge.—June 16th to December 31st, both days inclusive. Only four may be taken in one day by any person. Under twenty-four inches must be returned to the water uninjured.

Pickereel (Dore).—May 16th to April 14th following year, both days inclusive. Only twelve pickereel (dore) may be caught in one day by one person, and all under fifteen inches must be returned to the water uninjured.

Brook Trout.—May 1st to September 14th, both days inclusive. This open season also applies to brown trout, rainbow and other Pacific trout. Thirty only may be caught in one day by any person. Under six inches must be returned to the water. Not more than ten pounds may be taken in one day, though the number may be less than thirty.

Whitefish.—In waters where fishing with gill nets is not permitted, but in waters other than those of the Great Lakes, Georgian Bay, North Channel, where commercial fishing with gill nets is permitted, the open season is from December 1st to October 4th of the following year, both days inclusive. Under two pounds may not be caught.

HUNTING—OPEN SEASON.

LICENSE.—Non-residents may not hunt any bird or animal without a license, and such license must have endorsed on it the signature of the person to whom it is granted. Such license is for one season only, and the fee is \$25 to hunt deer, moose, caribou and all other kinds of game in season. License may be secured on application to the Deputy Minister of Game and Fisheries Toronto, Ontario. Resident deer hunter's license is \$3.00.

Deer.—November 1st to November 15th, both days inclusive. Only two deer may be taken in one season by one person who is a resident of the Province. Non-residents of the Province may take only one deer.

Moose, Reindeer or Caribou.—In the Highlands of Ontario, November 1st to November 15th, both days inclusive. In some of the Northern Districts of Ontario, including the Timiskaming, Timagami and the territory north and south of the Canadian Government Railways in Ontario, the open season has been extended, and shall be from October 1st to November 30th, both days inclusive. Only one moose, reindeer, or caribou may be taken in one season by one person. No cow moose, or young moose, reindeer or caribou, under the age of one year, may be killed. No elk or wapiti shall be hunted, taken or killed at any time in Ontario. No person may transport, or have in possession for that purpose during the closed season therefore, any wild deer, moose, reindeer, or caribou, or head, raw skin or other part thereof, unless accompanied by affidavit that same was taken during the open season. Deer, moose, reindeer or caribou may not be carried or transported unless a license shipping coupon is attached.

Duck, Plover, Rail and Snipe.—Duck of all kinds or any other water-

fowl, and snipe, rail, plover, or any other birds known as shore birds or waders in the Province of Ontario, the 1st day of September to the 15th day of December, both days inclusive.

Geese.—September 15th to December 31st, in any year, both days inclusive.

Swans.—Close season until 1928.

Grouse and Partridge.—Close season until 1920.

Hare.—October 15th to November 15th, both days inclusive, and from December 23rd to January 2nd.

Capercailzie.—May not be taken or killed before September 15th, 1920.

Pheasants.—Close season until 1920.

Prairie Fowl.—October 15th to November 15th, both days inclusive.

Quail.—Close season will likely be extended.

Wild Turkeys.—November 1st to November 15th, both days inclusive.

Woodcock.—October 15th to November 15th, both days inclusive.

Insectivorous Birds.—May not be caught, killed or sold, or had in possession without a permit, except hawks, crows, blackbirds and English sparrows.

Squirrels (Black and Grey).—November 1st to November 15th, both days inclusive.

Band-tailed pigeons, little brown cranes, sandhill cranes, and whooping cranes, swans, curlews, protected until the 15th day of September, 1928.

Black-breasted and golden plover, Wilson or Jack snipe, and the greater and lesser yellow-legs, 15th day of September to the 15th day of December, both days inclusive.

THE PROVINCE OF QUEBEC

FISHING—OPEN SEASON.

Salmon.—May 1st to July 31st. Fly fishing, May 1st to August 15th, both days inclusive.

Salmon Trout.—December 2nd to October 14th, following year.

Ouananiche.—December 1st to September 30th, following year, both days inclusive.

Speckled Trout.—May 1st to September 30th, both days inclusive.

Large Gray Trout.—December 2nd to October 14th following year, both days inclusive.

Pickeral.—April 15th to May 14th, both days inclusive. Under 15 inches in length must be returned to the water uninjured.

Bass.—June 16th to March 31st following year, both days inclusive. Under 9 inches in length must be returned to the water uninjured.

Maskinonge.—June 16th to April 14th following year, both days inclusive. Under 24 inches in length must be returned to the water uninjured.

Whitefish.—December 1st to November 9th following year, both days inclusive.

Smelt.—July 1st to March 31st.

Dore.—May 16th to April 14th following year, both days inclusive. (15 inches is minimum length).

Sturgeon.—1st July to May 31st following year, both days inclusive. Under 36 inches in length must be returned to the water uninjured.

No person who is not domiciled in the Province of Quebec can fish in the lakes and rivers under control of the Government of this Province, not actually under lease, without previously having obtained a permit to that effect. Such permit is only valid to the person therein indicated.

The fee required is \$10.00 for all non-residents and non-members of any club, or \$5.00 for any non-resident member of a duly incorporated club, lessee of fishing rights.

For salmon fishing the fee is \$25.00 for all non-residents, whether members or non-members of a club leasing a salmon river or part thereof.

HUNTING—OPEN SEASON.

Caribou.—September 1st to January 31st, following year, both days inclusive. Only two caribou may be taken in one season by one person. It is forbidden to hunt, kill or take at any time, fawns or any young up to the age of one year.

Deer and Moose.—September 1st to December 31st, both days inclusive. Only one moose and two deer may be taken in one season by one person. It is forbidden to hunt, kill or take at any time a cow moose, or fawns or any young up to the age of one year.

Beaver.—From November 1st to April 1st, in each year.

Mink, Martin, Pekan, Skunk and Lynx.—November 1st to March 31st, both days inclusive.

Otter.—November 1st to March 31st, both days inclusive.

Hare.—October 15th to January 31st following year, both days inclusive.

Bear.—August 20th to June 30th following year, both days inclusive.

Muskrat.—November 1st to April 1st, both days inclusive.

Woodcock, Snipe, Plover, Curlew, Tatler and Sandpiper.—October 1st to January 31st following year, both days inclusive.

Birch or Spruce Partridge.—September 1st to December 15th, both days inclusive.

Ducks.—Sheldrake, loon and grills, widgeon, teal, September 1st to February 28th the following year, both days inclusive.

Non-residents cannot hunt in this Province without having previously obtained a license to that effect. For each license the fee is \$25.00 for the whole season, and is not transferable. Fee for members of incorporated clubs, \$10.00.

STATE OF NEW HAMPSHIRE

FISHING—OPEN SEASON.

Lake Trout, Land-Locked Salmon, Whitefish, Shad and Blue Pans.—January 1st to September 1st, both days inclusive. Two first named in Lake Winnepesaukee, Pampus and Lake Winnisquam, January 1st to June 30th; and Newfound-Lake, May 1st to September 15th, both days inclusive.

Brook or Speckled Trout.—April 5th to September 1st, except that in Lake Sunapee and in the lakes and ponds of Coos, Grafton and Carroll counties they may be taken in August, and in the three counties named during the first fourteen days of September, in ponds only, but not during the month of April. Limit, ten pounds any one day. Minimum length, from brooks, five inches. Special acts for length in certain ponds.

Black Bass.—July 1st to January 1st.

Maskinonge.—June 1st to April 1st.

In Lake Sunapee pickerel may be taken at any time; in Winnepesaukee, Winnisquam, Asquam and Wentworth, June 1st to March 31st following year.

Pike-Perch and White-Perch.—June 1st to March 1st.

Pickerel.—June 1st to February 1st.

HUNTING—OPEN SEASON.

Moose, Caribou and Elk.—Protected, no open season.

Deer.—October 15th to December 15th, both days inclusive, and then only in county of Coos; Carroll and Grafton counties, November 1st to December 15th, both days inclusive. Sullivan, Cheshire, Hillsboro, Merrimack, Belknap, Stafford and Rockingham, December 1st to December 15th, both days inclusive. One deer only may be taken in last seven counties mentioned above, or two in the counties of Coos, Carroll and Grafton, but no more than two may be taken within the state. Hunting with dogs not allowed.

Sable, Otter, Fisher, Mink, Martin, Muskrat, Skunk, Raccoon or Fox.—November 1st to March 1st following year.

Beaver.—No open season.

Gray Squirrel.—No open season.

Hare and Rabbits.—October 1st to March 1st following year, both days inclusive.

European Partridge, Pheasant, Upland Plover and Wood Duck.—No open season.

Ducks and Geese.—September 1st to December 16th (in Rockingham county, July 15th to January 30th), both days inclusive.

Woodcock, Ruffed Grouse or Partridge and Quail.—October 1st to November 30th, both days inclusive.

Black Breasted and Golden Plover, Yellow Legs, Wilson or Jack Snipe and Rail.—August 15th to December 1st.

Insectivorous Birds.—Must not be caught, killed or sold, except English sparrows, crows, hawks, starling and owls.

Non-residents of New Hampshire and aliens shall not, at any time, engage in hunting or pursuing any wild animal, wild fowl or bird within the limits of the State without first having procured of the Fish and Game Commissioners a license, for which a fee of \$15.00 shall be exacted; fee for residents of the State, \$1.00; and no license shall be valid unless the signature of the person to whom it is issued is thereon.

Coupons attached to license permit the shipping of two deer, and taking, open to view, ten game birds.

STATE OF MICHIGAN

FISHING—OPEN SEASON.

Speckled Trout, Land-Locked Salmon, Grayling or California, Loch Leven and Steelhead Trout.—May 15th to September 1st, both days inclusive. Minimum size, seven inches. Unlawful to sell any kind of trout or grayling, large or small-mouth black bass, strawberry, calico or white bass. Unlawful to take from stocked streams for four years after stocking or take more than 35 in one day or have more than 50 in possession at any one time. In lower peninsula of Michigan open season for speckled trout, etc., is May 1st to September 1st.

Small-mouthed Black Bass.—Open season, July 1st to March 1st. Big-mouthed Black Bass.—Open season, June 16th to February 28th, both days inclusive. Small-mouthed black bass or big-mouthed black bass unlawful to take under ten inches in length, or to take more than ten in one day, or have more than ten in possession at any one time.

Blue Gills, Sunfish, Perch, White Bass, Calico Bass, Rock Bass, Crappies and Wall-eyed Pike.—Unlawful to take or have in possession more than twenty-five. Provided that such fish when taken from the Great Lakes may be transported and sold when of a legal size.

NON-RESIDENT ANGLER'S LICENSE. Applies to non-residents of the State only. Non-resident males over twenty-one years required to procure a license to fish. Fee for license to take all kinds of fish except trout, \$1.00. Fee for license to take all kinds of fish, including trout, \$3.00.

HUNTING—OPEN SEASON.

Deer.—November 10th to November 30th, both days inclusive. Only one deer may be taken in one season by one person. Unlawful to kill on Bois Blanc Island until 1918. No person may hunt, kill or capture any deer when it is in the red coat, or any fawn in the spotted coat. No person may kill or capture any deer while it is in the water. Dogs not allowed. Non-resident license, \$25. Resident hunter's license, \$1.50. Non-resident licensed hunter may take one deer out of the State when lawfully killed.

Moose, Elk and Caribou.—Protected.

Beaver.—November 1st to May 15th following year with special license.

Bear, Otter, Fisher, Martin, Fox, Mink or Raccoon.—November 1st to March 31st, both days inclusive.

Muskrat.—November 1st to April 15th following year, both days inclusive.

Pigeons.—Unlawful to kill mourning doves and Antwerp or homing pigeons.

Prairie Chickens.—Unlawful to kill at any time.

Quail.—Protected until 1920.

Woodcock.—September 1st to December 15th, both days inclusive.

Partridge.—October 15th to November 30th, inclusive. Unlawful to kill more than six in one day. Unlawful to have more than 15 in possession.

Ducks, Geese and Wild Water Fowls.—September 1st to December 15th, both days inclusive. Season fixed by federal regulations in accordance with 25 limit for one day or in possession at any one time.

Federal law opens season on ducks, geese, coot and gallinules September 15th, and close season December 15th.

Insectivorous Birds.—May not be caught, killed or sold, or had in possession without a permit, except blackbirds, English sparrows and crows.

HUNTER'S LICENSE.—Residents hunting protected game birds or animals or fur-bearing animals, other than deer or beaver, must procure a license—fee, \$1.00. Persons hunting on their own lands upon which they are regularly domiciled and their minor children, exempt. Deer hunters' license fee, \$1.50. Non-residents' license fee to hunt or kill protected game birds or animals and fur-bearing animals, other than deer and beaver, \$10.00. Deer license fee, \$25.00. Alien residents of this State who have not declared their intentions to become citizens, and who hunt protected birds or animals or fur-bearing animals, other than deer and beaver, must secure a license—fee, \$10.00. Deer license fee, \$25.00.

SPECIAL BEAVER LICENSE.—Fee, \$10.00, which permits holder to take fifteen beaver.

STATE OF MAINE

GAME LAWS.

Moose and Caribou.—Protected.

Deer.—Open season in Aroostook, Penobscot, Washington, Hancock, Piscataquis, Somerset, Franklin and Oxford counties, October 1st to December 15th, both days inclusive; limit in these counties, two deer to a person in one season.

Special Deer Laws.—Open season in counties of Androscoggin, York, Cumberland, Sagadahoc, Lincoln, Waldo, Kennebec and Knox during the month of November. Limit in these counties, one deer to a person in one season.

Close season on certain islands on sea coast.

One person can kill only two deer in all in this State in one season.

Deer cannot be sold or given away to be taken out of the State.

All hunting prohibited on Kineo Point, Moosehead Lake; in certain territory in town of Eden (Bar Harbor) and on Prout's Neck, Cumberland county; town of Perkins, and on Richmond's Island and certain territory in Cape Elizabeth, Cumberland county.

Sunday is closed season on all wild birds and wild animals.

It is a closed season on wild birds from sunset to sunrise of the following morning; and on wild animals from one hour after sunset until one hour before sunrise of the following morning.

Partridge and Woodcock.—October 1st to November 30th, both days inclusive. Ducks, Brant, Geese, Coots, Gallinules and Jacksnipe or Wilson Snipe.—September 16th to December 31st, both days inclusive. Black-breasted and Golden Plover and Greater and Lesser Yellowlegs.—Open season August 16th to November 30th, both days inclusive. Rails (except Coots and Gallinules).—Open season September 1st to November 30th, both days inclusive. Perpetual closed season on Hungarian, partridge, capercaillie, black game, all species of pheasant (except ruffed grouse or partridge), curlew, wood duck, swans and all shore birds (except black-breasted and golden plover, Wilson or jacksnipe, woodcock and greater and lesser yellowlegs), and on all other wild birds (except crows,

hawks, owls, English sparrows, mudhens, kingfishers, loons and blue herons, which may be killed at any time).

Daily Limit on Game Birds.—No person can kill, have in possession or transport in any one day more than five partridges, ten woodcock, ten ducks, ten snipe and five plover.

Game birds cannot be sold or purchased at any time. Motor boats cannot be used for hunting sea birds, ducks or waterfowl, in any inland or tidal waters in Maine. The laws protecting migratory birds in Maine now conform to the Federal laws. Dogs must not be used in hunting deer. Unlawful to use silencers on firearms.

HUNTING LICENSES.

Fee for non-resident to hunt in any county up to the time the deer season opens in that county, \$5.00; to hunt deer during season, \$15.00; a \$5.00 license may be exchanged for a \$15.00 license upon payment of \$10.00 and return of the five-dollar license.

(Note.—In Androscoggin, Kennebec, Cumberland, York, Knox, Sagadahoc, Lincoln and Waldo counties, a \$5.00 license may be used also during the month of December, after the deer season closes in these counties.)

FISHING LICENSES.

Non-residents, fourteen years of age and over, must procure a fishing license before they can legally fish for any kind of fish in any inland waters. Fee, \$2.00.

GENERAL FISH LAWS.

Lakes and Ponds.—Land-locked Salmon, Trout and Togue.—Open season is from time ice is out of the pond or lake fished in the spring until September 30th. White Perch and Black Bass.—Open season, in lakes and ponds, from June 20th until September 30th. The law provides however, that it shall be lawful to take black bass, with unbaited artificial flies only, from the time the ice is out of the lake or pond fished in the spring until June 20th following.

Special Law.—Land-locked Salmon, Trout and Black Bass.—Open season in Sebago Lake and Long Pond, Cumberland county, is from April 1st to September 30th, both days inclusive.

Rivers and Streams.—Land-locked Salmon, Trout and (Sea) Salmon.—Open season in brooks, streams and rivers is from the time the ice is out of the brook, stream or river fished in the spring until September 15th; on black bass and white perch, from June 20th until September 15th.

Legal Length of Fish.—No land-locked salmon less than twelve inches in length, or trout less than six inches in length, or black bass less than ten inches in length, or white perch less than six inches in length, can be caught, killed or had in possession by any person; provided, further, that in Great, Long, East, North, Ellis, McGraw and Snow ponds, said ponds being part of the Belgrade Chain of Lakes, no trout less than ten inches or black bass less than twelve inches in length can be caught and killed at any time; provided, further, that no person shall take, catch and kill in any one day more than six black bass in either of the above named ponds, or in Lake Kezar, or in Lower Kezar pond in Oxford county.

It is unlawful for any person or party, or the occupants of any one boat, canoe, raft or other vessel or conveyance propelled by steam, electricity, hand or other power, to catch by still or plug fishing, so-called, more than four trout and land-locked salmon, in any one day, collectively, nor more than two trout and land-locked salmon, in any one day, individually, in Richardson, Mooselucmeguntic and Cusuptic Lakes, in Franklin and Oxford counties; still or plug fishing prohibited in Rangeley Lake, Franklin county.

Daily limit on protected fish under the general law.—Fifteen pounds (or not more than twenty-five fish, provided they do not exceed fifteen pounds in weight) or one fish.

Sale and purchase of land-locked salmon, trout, togue, white perch and black bass is prohibited.

CANADIAN EXPRESS COMPANY.

Operating Over: Grand Trunk Railway System, Grand Trunk Pacific Railway, Grand Trunk Pacific Coast Steamship Company, and the Transcontinental Line.

General Forwarders to All Parts of the World.

Money Orders, Foreign Drafts and Travellers' Cheques issued—Payable Everywhere at Par—Safe, Economical, Convenient.

General Offices, Montreal, Que., John Pullen, President.

GRAND TRUNK SYSTEM PUBLICATIONS.

Copies of the following publications, which are beautifully illustrated, may be obtained on application to any of the Grand Trunk agents named on page 56: "Algonquin Park", "Lake of Bays", "Muskoka Lakes", "Playgrounds", "Across the Continent", "Portland, Casco Bay and Maine Resorts", "Ottawa", "Grand Trunk Pacific Hotels", "North American Alps", "Notes by the Way", "Alaska", "Scenic Features between Edmonton and Prince Rupert", "Prairie Lands of Western Canada", "Plateau and Valley Lands".

LIST OF HOTELS AND BOARDING HOUSES

MUSKOKA LAKES DISTRICT

P. O. Address	Hotel or Resort	Accommodates	Rates	
			Per Day	Per Week
LAKE MUSKOKA				
Bala.....	Windsor Hotel.....	157	\$2.00-3.00	\$12.00-20.00
".....	The Swastika.....	100	2.00-2.50	10.00-14.00
".....	Jackson House.....	40	1.50-2.00	8.00-14.00
".....	Moon Shute House.....	30	1.50	7.00 up
".....	Musquash Lodge.....	30	1.50	8.00 up
Beumaris.....	Beumaris Hotel.....	150	3.00 up	14.00 up
".....	Roseneath.....	20	2.00	9.00-12.00
Torrance.....	Brighton Beach.....	60	1.50	6.00-10.00
Dudley.....	Rocky House.....	20	1.50	8.00
".....	Cape May.....	35	\$1.00 up	7.00 up
Whiteside.....	American House.....	50	2.00	10.00-12.00
".....	Acton Island.....	30	2.00	10.00
Hutton House.....	Hutton House.....	50	2.00	10.00-12.00
".....	Searcliff.....	40	2.00	8.00-12.00
Millford Bay.....	Millford Bay House.....	100	2.00-2.50	9.00-14.00
".....	Cedar Wild.....	100	2.50	12.00-15.00
Mortimer's Point.....	Winberry House.....	50	2.00	8.00 up
".....	Pleasant View.....	30	1.50	8.00-12.00
Rossclair.....	Rossclair.....	60	2.00	8.00-12.00
Gravenhurst.....	*Albion.....	50	2.00-3.00	10.00-18.00
".....	Fern Glen.....	20	1.50	8.00-12.00
".....	Pinedale (on Gull Lk.).....	100	2.00-3.00	12.00-18.00
".....	Camso Cottage.....	50	2.00	10.00
MUSKOKA RIVER				
Bracebridge.....	*Albion Hotel.....	75	2.00-2.50	Special
".....	*Queen's Hotel.....	75		
LAKE JOSEPH				
Pinelands.....	Belmont House.....	100	2.00	11.00 up
".....	Pinelands.....	50	2.00	10.00-12.00
Elgin House.....	Elgin House.....	300	2.50 up	15.00 up
Redwood.....	Bay Leaf.....	30	1.50	7.00-10.00
Hamil's Point.....	Hamil's Hotel.....	75	2.00	9.00-14.00
Staney Braes.....	Staney Braes.....	35	2.00	8.00-12.00
Craigie Lea.....	Craigie Lea House.....	50	2.00 up	10.00-15.00
".....	Carlingford House.....	50	2.00	9.00-12.00
Barnsdale.....	Barnsdale House.....	60	1.50	8.00
Gordon Bay.....	Island View.....	50	1.50-2.00	10.00-12.00
".....	Gordon Bay House.....	60	2.00-2.50	9.00-12.00
Stanley House.....	Stanley House.....	90	2.00 up	11.00-15.00
Dudley.....	Dudley House.....	25	2.00	10.00
LAKE ROUSSEAU				
Windermere.....	Windermere House.....	200	2.00-2.50	10.00-16.00
".....	Fife House.....	60	2.00	8.00-10.00
".....	Ingliside House.....	50	1.25	7.00- 8.00
".....	Maple Leaf.....	60	1.50	6.00-10.00
".....	Waskada.....	120	1.75-2.00	8.00-12.00
".....	King's Park.....	75	2.00	11.00 up
Royal Muskoka.....	Royal Muskoka.....	300	3.50 up	18.00 up
Judd Haven.....	Ernscliffe.....	100	2.00-3.00	10.00-18.00
".....	Rest Harbor.....	25	2.50	8.00-11.00
".....	The Bluff.....	50	1.50-2.00	9.00-12.00
Maplehurst.....	Maplehurst Hotel.....	30	2.25 up	14.00-18.00
Rosseau.....	*Monteith House.....	250	3.00-5.00	17.50-30.00
".....	Rossmoyne.....	50	1.50-2.00	10.00-14.00
".....	Bay View.....	30	1.25	8.00
".....	Lakeview.....	20	1.50-2.00	10.00-12.00
".....	Bide-a-Wee.....	30	1.00	8.00-10.00
".....	The Retreat.....	25		8.00-10.00
Morinus.....	Morinus House.....	100	1.50-2.00	9.00-12.00
".....	Cleveland House.....	150	2.50	14.00-18.00
Minett.....	Paignton House.....	55	2.00-2.50	8.00-10.00
".....	Thorel House.....	60	2.00	10.00-14.00
Woodington.....	Woodington House.....	125	2.00-3.00	13.00-20.00
Gregory.....	Nepahwin.....	100	2.50	12.00-16.00
Port Sandfield.....	Shardlow.....	20		
".....	Edgewood.....	30		
".....	Shottery.....	25	2.00	10.00-12.00
".....	Ferndale.....	100	2.50	10.00-15.00

*Open all year. All rates American Plan. Where rates are not shown may be obtained on application.

LIST OF HOTELS AND BOARDING HOUSES

MUSKOKA LAKES DISTRICT—Continued

P. O. Address	Hotel or Resort	Accommodates	Rates	
			Per Day	Per Week
INDIAN RIVER (between Lakes Muskoka and Port Carling)	en Lakes Muskoka and Rosseau)			
Port Carling	Port Carling House	50	\$1.50-2.50	\$10.00-14.00
"	Bay View House	40		
"	Trouten House	50		
"	Oak Crest	25	1.50	8.00-10.00
"	Havington Farm	40	1.50-2.00	8.00
"	Riverdale			
"	Endiang	70	2.50	8.00-12.00
"	Beverly Lodge	60	2.00	10.00-14.00

MAGANETAWAN RIVER DISTRICT

Ahmie Harbor	Lakeview Hotel	50	1.50 up	8.00-12.00
"	Chikopi	40	1.50-2.00	6.00-12.00
Ahmie Lake	Forest Nook	60	1.50-2.00	6.00-10.00
"	Cedar Croft	75	1.50-2.00	8.00-12.00
Burk's Falls	Hotel Central	50	2.50	8.00-12.00
Cecebe Lake	Rockwyn	60	1.50 up	8.00-12.00
Lake of Many Islds.	Schmefel House	60	1.50	10.50
Magnetawan...	Klondyke	50	1.00	4.00- 6.00

LAKE OF BAYS DISTRICT

Allansville	Boarding House	10		
Antioch	Camp Billie Bear	12	2.00	
Baysville	White House	40		9.00
"	Point Pleasant	75		6.00-10.00
"	Idlwyld	20		8.00-10.00
"	Langton House	20		
"	Rosebank Farm	15		
Birkendale	The Hemlocks	30		
"	Birkendale Summer Resort	20		7.00-12.00
"	Sea Breeze Cottage	30		
Brown's Brae	Fairview Farm	30		
"	Grandview Resort	35		10.00-14.00
"	Glen Mount	20		
Dorset	Ganoseyo	60		10.00-12.00
"	Garryowen Lodge	20		15.00
"	Boarding House	30		7.00
"	Bay View Farm	15		7.00-10.00
"	The Maples	15		8.00-10.00
"	Mountain Trout House	40		
"	Bunny Lodge			12.00
"	Angle's Retreat, (Hollow Lake)			10.50-12.00
Dwight	Gouldie House	75		8.00-12.00
"	Dwight House	40		
"	Nor Loch Lodge	35		
"	Pine Grove Inn	50		7.00-10.00
Fox Point	Park Place	15		
"	Island View Cottage	15		8.00-12.00
"	Port Cunningham	60		12.00
"	Port Ideal	80		12.00-16.00
"	Ronville	125		10.00-14.00
Hillside	Wequash Resort	25		6.00-7.00
Huntsville	Malvern House (Peninsular Lake)	15		9.00
"	Haverland	40		9.00-11.00
"	Riverside	20		
"	Hollingshead	25		
"	Deerhurst	75		
"	Grand View	65		8.00-10.00
"	Hotel Kent	50		
"	Sandanona	40		14.00
Kingsway, P.O.	Britannia Hotel	250		12.00-25.00
Norway Point (via Huntsville)	The "Wawa"	300	3.50-5.00	21.00-30.00
	The "Wawa" Tent Annex		3.00-4.50	16.00-20.00

LIST OF HOTELS AND BOARDING HOUSES

LAKE OF BAYS DISTRICT—Continued

P. O. Address	Hotel or Resort	Accommodates	Rates	
			Per Day	Per Week
Port Sydney	The Balsams	35		6.00-8.00
"	Chester House	25		8.00
"	River View	20		8.00
"	The Bellevue	50		10.00-14.00
"	Clyffe House	90		6.00-8.00
"	Lake View	35		6.00-8.00

ALGONQUIN PROVINCIAL (Ont.) PARK

Algonquin Park	Highland Inn	150	\$4.50-5.50	\$21.00-35.00
"	Nominigan Camp	75	4.50	21.00-35.00
"	Camp Minnesing	75	4.50	21.00-25.00
Mowat P.O.	Mowat Lodge	35	2.00	On request
Mowat P.O.	Hotel Algonquin	50	3.00 3.50	16.00-20.00

KAWARTHA LAKES DISTRICT

Fenelon Falls	Brooks House	35	\$1.50-2.00	\$8.00-10.00
"	Mansion House	20	1.50	7.00- 9.00
"	McArthur House	50	1.50	7.00- 9.00
Kirkfield	The Inn	24	3.00	Special
Lindsay	Benson House	55 rooms	2.00	Spl.wk.rate
"	Simpson House	35 rooms	2.00	Spl.wk.rate
"	Butler House	30 rooms	1.50	7.00
"	Elsmure Hotel	40 rooms	European Plan	
Young's Point	Lakeview	75	1.50	9.00
"	Carlton	50	1.50	9.00
"	South Beach	100	2.00	8.00-10.00
Kawartha Park	Kawartha Park	50	1.50-2.00	8.00-10.00
"	Maple Leaf	75	1.50-2.00	8.00-10.00
Juniper Island	Glenwood	60	1.50	9.00
"	Kilkenny	40	1.50	9.00
McCracken's	Victoria	75	1.50	9.00
Clarina	Belleviere	60	1.50	9.00
Mount Julian	Mount Julian	50	1.50	9.00
"	Viamede	125	2.00-2.50	10.00-15.00
Burleigh Falls	Park Hotel	100	2.00-2.50	10.00-15.00
Buckhorn	Buckhorn	100	1.50	9.00
Hall's Bridge	Windsor	60	1.50	9.00
Oak Orchard	Oak Orchard	100	2.00-2.50	10.00-15.00
Lakefield	Lakefield	75	1.50-2.00	9.00
"	Midland	50	1.50-2.00	9.00
"	Commercial	50	1.50-2.00	9.00

GEORGIAN BAY DISTRICT

Collingwood	Globe	100	\$3.00	\$14.00-17.50
Copperhead Island	Campbell House	55	2.20-2.50	1.500-17.00
Honey Harbor	Royal	200	3.50	15.00 up
"	Victoria	90	2.00	8.00-10.00
Minneog	The Minnecoganashene	200	2.50-3.50	15.00 up
Parry Sound	Belvidere	200	1.00	Eur. Plan
"	Mansion	75	2.00	10.00-12.00
"	Victoria House	25	2.00	9.00
"	Kipling	50	2.50	15.00-20.00
Penetang	Canada House	50	2.50 up	
"	Palmer House	50	2.00	
"	Georgian Bay Hotel	50	2.00	
Whalen's Landing	Boarding House	25	2.00	
Rose Point	Rose Point			
"	Summer Resort	60	2.50 up	Eur. Plan
Sans Souci	Sans Souci	50	2.50	14.00
Sarnia	Vendome	150	3.00 up	12.00 up
"	Arlington	50	2.00 up	11.00 up
Stayner	Captain Inn	150	2.50 up	12.00-18.00
Waubushene	Bay View House	30	1.50-2.00	up
"	Jordon House	50	2.00	10.00-12.00
"	Bonnie View	35	2.00	10.00-12.00
"	Lake View	15	1.50-2.00	
"	The Alexandria	20	1.50-2.00	

LIST OF HOTELS AND BOARDING HOUSES

SEVERN LAKE DISTRICT

P. O. Address	Hotel or Resort	Accommodates	Rates	
			Per Day	Per Week
Washago	Riverdale Hall		2.00	\$14.00

LAKE SIMCOE DISTRICT

Jackson's Point	Pine Plaza		\$1.50-2.00	\$8.00-12.00
"	Lake View		1.50-2.00	8.00-10.00
"	Trolley Rest		2.00	8.00-10.00
"	Jackson's Point Hotel		2.00	9.00-16.00
"	Glenboro		2.00	9.00-11.00
"	Glenwoodland		2.00	8.00-10.00
"	Glensibold		2.00	8.00-10.00
Orillia	Orillia House	75	2.50	Special
"	Gladstone House	30	2.00	10.00-12.00
"	Royal	60	2.50	Special
"	Orchard Point Inn	125	2.00 up	10.00 up
"	Fern Cottage	60	2.00 up	8.00 up
"	Simcoe Lodge	60	2.50	12.00-15.00
"	Lakeview Cottage	70	2.50 up	10.00-14.00

LAKE ERIE RESORTS

Port Dover	Commercial	30	\$2.00	\$9.00
"	Dominion	75	2.00-2.50	Special
"	Nurfolk House	30	1.50	5.00- 8.00
"	Orchard Beach House	100	2.00	8.00-12.00
"	Duneden	25		8.00-10.00
Port Rowan	St. Charles Hotel	42 rooms	2.00-2.50	
"	Bayside Hotel			
Port Stanley	Invererie	100	2.50	10.00
"	Hill Crest Inn	65		

LAKE ONTARIO RESORTS

Belleville	Hotel Quinte	100	\$3.50 up	
Burlington Beach	The Queens	30	2.50-3.00	\$14.00
"	The Raymond	10	2.50-3.00	14.00
Cobourg	Arlington	200	2.50	10.00-14.00
"	Cedarmere	225	2.50-3.00	12.00 up
"	Columbia	100	2.50	10.00-12.00
Grimsby Beach	Lakeview House		2.00-3.00	12.00-16.00
"	Park House		2.00-3.00	12.00-16.00
Long Branch	Loug Branch Hotel	50	2.00	10.00-15.00
Oakville	Murray House		2.00 up	
"	Village Inn			
Port Hope	Queen's Hotel	50	2.50	
Trenton	Gilbert House		2.50-3.00	

THOUSAND ISLANDS AND ST. LAWRENCE RIVER RESORTS

Alexandria Bay, N.Y.	Crossman House	300	\$5.00 up	
"	Thousand Islands House	400	3.00-5.00	
"	Marsden House	250	3.50 up	\$21.00 up
"	Westminster Hotel	300	3.50-6.00	21.00-35.00
Brockville, Ont.	The Revere House	60 rooms	3.00 up	12.50
"	Grand Central Hotel	55 rooms	2.50 up	
"	Garbutt's Hotel	17 rooms	3.00 up	
Clayton, N.Y.	The Hubbard House	50	3.00-5.00	
"	The Herald House	60	3.00-4.00	17.50-28.00
"	Clayton House	50	3.00 up	17.50 up
"	Walton House	100	4.00 up	25.00 up
Gananoque, Ont.	Gananoque Inn	100	3.00-4.00	17.00-27.00
"	International Hotel	20	2.50-3.00	14.00
"	Provincial Hotel	30	2.50-3.00	14.00
"	Thousand Islands Inn	70	2.00	11.00 up
"	Hay Island House	70	2.00	11.00
Kingston, Ont.	Randolph	60	3.00-4.00	17.50-28.00
"	Frontenac	60	3.00-4.00	21.00-28.00
Ivy Lea, Ont.	Ivy Lea Hotel	25 rooms	2.00	10.00 up
"	Point Comfort Summer Resort	50		9.00 up
"	Glen House	40	2.00	10.00
"	Echo Lodge	40	1.00	10.00-12.00

LIST OF HOTELS AND BOARDING HOUSES

THOUSAND ISLANDS AND ST. LAWRENCE RIVER RESORTS—Continued

P. O. Address	Hotel or Resort	Accommodates	Rates	
			Per Day	Per Week
"	Visger House.....	40	1.00	10.00-12.00
"	Cragmere.....	50	2.50	11.00-15.00
Lakeside, Que.	Bay View Hotel.....	25	1.50	10.00
"	Chateau St. Louis.....	150		
Valois, Que.	Landsdowne Riverview House.....	45	1.50	9.00-10.00
Rockport, Ont.	The Island View.....	75	2.00	10.00-12.00
Summerstown, Ont.	Stanley Isl. Pk. Hotel	60 rooms	2.50	14.00 up
Ste. Anne de Bellevue Que.	Clarendon Hotel.....	60	2.50-5.00	20.00-30.00
"	Raymond Hotel.....	20	2.00-3.00	12.00
"	Bellevue Hotel.....	10	2.50	10.00-12.00
"	Canada Hotel.....	12	2.00	12.00
"	St. Anne's Hotel.....	12	2.00	10.00-12.00
Thousand Island Park, N.Y.	The Wellesley House	150	2.75-3.00	

TIMAGAMI REGION

Bear Island P. O. . . .	Lake View House.....	25	\$2.50-3.00	\$15.00
Timagami, P.O. . . .	Wabi-Kon Camp Summer Resort....	100	2.50	14.00

MISCELLANEOUS RESORTS

Kearney, Ont.	Lakeview House.....		\$1.25	
Harwood, Ont.	Lakeview Hotel.....		2.00	\$12.00
Gore's Landing, Ont.	Rice Lake House.....		2.00	12.00
Port Frank, Ont.	The Idlwyld.....	50	1.50	15.00



Ladies' Writing-room, Highland Inn, Algonquin Park.

HOW TO PLAN YOUR TOUR.

From points in the South, passengers reach the Grand Trunk Railway either by way of Buffalo and Niagara Falls, or by way of Detroit, thence to Toronto. From Chicago and points in the Western States passengers are carried over the main line of this great system by way of Port Huron to Toronto, passing through some of the principal cities of the United States and the western part of Ontario.

From points in the East—Quebec and New England points—the route is via the Grand Trunk Railway System and Montreal, and from all points in the New England States and Eastern Provinces the resorts in the "Highlands of Ontario" are reached by the Grand Trunk Railway System through Montreal.

CUSTOMS ARRANGEMENTS.—Persons visiting Canada for a limited period may bring with them guns, fishing tackle, tents, camp equipment, cameras, bicycles, etc., required for personal use, and such articles must be reported to Canada Customs Inspector when baggage is inspected, and an amount equal to the duty deposited thereon, which amount will be refunded, if the articles are exported from Canada within six months, providing the articles are reported to the Canada Customs Inspector at the time of exportation.

The Customs examination should be attended to at the first port of entry to Canada, but baggage may be bonded to stations in Canada where a Customs Officer is located regularly, and for the convenience of passengers, Customs Inspectors are located at Muskoka Wharf, Huntsville and Burk's Falls during the summer season.

There is also a Canada Customs Inspector stationed at Dearborn Station, Chicago; Portland, Me., and at the Lehigh Valley Station in Buffalo, during the summer season to examine baggage for Canada. U. S. Customs Inspectors for the examination of baggage for the United States are located at Toronto, Montreal, Ottawa, London, Collingwood, Quebec, Levis and Muskoka Wharf during the summer season.

BAGGAGE ARRANGEMENTS.—Sportsmen—For sportsmen and campers, singly or in parties, hunting or fishing expeditions, one hundred and fifty (150) pounds of baggage and camping outfits will be checked free of charge on each full ticket, and seventy-five (75) pounds on each half ticket, provided it consists of wearing apparel, sportsmen's and campers' outfits, such as tents, small bundles of bedding, camp utensils and provisions in small quantities, packed in proper receptacles, such as boxes with handles, or trunks, so that they can be checked, piled and handled as ordinary baggage.

Furniture, barrels, bags of flour, or like bulky articles of that nature, also articles containing liquids of any kind, will not be checked as baggage, but must be sent by express or freight.

Guns in wooden, canvas or leather case may be taken into passenger cars, but if not protected, they must be conveyed in the baggage car at owner's risk. Canoes, not exceeding eighteen feet in length, when accompanied by sportsmen or campers, will be checked subject to same charges as for one hundred (100) pounds excess baggage—minimum charge \$1.00. Campers' outfits, etc., carried only at owner's risk.

The foregoing arrangements apply to a limited district, including Algonquin Park and certain other points north of Toronto, and do not apply to points in United States.

DOGS—The charge for the transportation of each dog (not exceeding \$25 in value), when accompanied by the owner and provided with collar and chain, is the same as for 100 pounds excess baggage, with a minimum charge of 25 cents.

When presented for transportation, properly crated or boxed, accompanied by the owner, dogs will be checked through at regular excess baggage rate for gross weight; minimum weight to be 100 pounds, with a minimum charge of 25 cents. All dogs will be carried at owner's risk.

GRAND TRUNK SYSTEM AGENCIES

Alexandria Bay, N.Y.	CORNWALL BROS., Market St.
Battle Creek, Mich.	L. J. BUSH, Passenger Agent, G.T. Ry. Station.
Boston, Mass.	W. R. EASTMAN, G.A.P.D., Rooms 707-9 Old South Building, 294 Washington St.
Brantford, Ont.	T. J. NELSON, City Pass. and Ticket Agent, 153 Colborne St.
Brockville, Ont.	JOHN W. RIDGEWAY, Ticket Agent, 8 Court House Ave.
Buffalo, N.Y.	H. M. MORGAN, City Pass. and Ticket Agent, 5 So. Div. St. near Main St. (Ellicott Square Building).
Calgary, Alta.	R. H. Merritt, City Pass. and Tkt. Agt. 811 First St. West.
Chicago, Ill.	C. G. ORTTENBURGER, City Pass. Agt. 301 South Clark St.
Chicago, Ill.	GEO. W. WATSON, City Tkt. Agt. cor. Jackson Boulevard.
Detroit, Mich.	R. McC. SMITH, City P. & T. Agt., 118 Woodward Ave.
Edmonton, Alta.	J. F. PHILP, City Pass. and Ticket Agt., 153 Jasper Ave. E.
Flint, Mich.	V. A. BOVEE, Passenger Agent, G.T. Ry. Station.
Gananoque, Ont.	H. F. WARD, Ticket Agent.
Grand Rapids, Mich.	C. A. JUSTIN, City P. and T. Agt., G.T. Ry. Station.
Guelph, Ont.	G. E. WALKER, City Pass. and Tkt. Agt., Wellington Hotel Block.
Hamilton, Ont.	JAS. ANDERSON, City Pass. & Tkt. Agt., 11 James St. N.
Kansas City, Mo.	G. L. BRYSON, Trav. Pass. Agt., 340-342 N.Y. Life Bldg.
Kingston, Ont.	J. P. HANLEY, City Pass. and Ticket Agent, corner Johnston and Ontario Sts.
Lansing, Mich.	F. H. POTTER, Passenger Agent, G.T. Ry. Station.
Lewiston, Me.	F. P. CHANDLER, Passenger Agent, G.T. Ry. Station.
London, Ont.	R. E. RUSE, City Passenger and Ticket Agent, corner Richmond and Dundas Sts.
Los Angeles, Cal.	W. H. BULLEN, Pacific Coast Agent, 202 Security Bldg.
Milwaukee, Wis.	CROSBY TRANS. Co. Dock, 7 Bridge Street.
Moncton, N.B.	J. H. CONCORAN, Travelling Passenger Agent, 8 Wyse Bldg., Main St.
Montreal, Que.	J. QUINLAN, District Pass. Agt., Bonaventure Station.
Montreal, Que.	M. O. DAFOE, City Pass. & Tkt. Agt., 122 St. James St. cor. St. Francois Xavier.
Moose Jaw, Sask.	A. W. IRWIN, City Pass. and Tkt. Agt., cor. Main and High Sts.
Mt. Clemens, Mich.	H. G. SMITH, City Pass. and Ticket Agt., 45 Cass Ave.
New York, N.Y.	F. P. DWYER, Gen. Agt., Pass. Dept., 1270 Broadway, cor. 33rd St.
Niagara Falls, N.Y.	W. B. PRESCOTT, City Pass. and Ticket Agt., 1 Falls St.
Ogdensburg, N.Y.	GEO. S. MEAGHER, Ticket Agent, 55 State St.
Ottawa, Ont.	PERCY M. BUTTLER, Gen. Agent, Pass. Dept., Russell House Bldg., cor. Sparks and Elgin Streets.
Peterboro, Ont.	J. B. DORAN, City Pass. and Tkt. Agt., 324 George St.
Pittsburgh, Pa.	A. B. CHOWN, Trav. Passenger Agt., 505-6 Park Bldg.
Port Arthur, Ont.	S. W. RAY, 12 Cumberland Street.
Port Huron, Mich.	T. C. MANN, Ticket Agent, G.T. Ry. Station.
Portland, Me.	G. A. HARRISON, Passenger Agent, G.T. Ry. Station.
Portland, Ore.	DORSEY B. SMITH, City Pass. and Tkt. Agt., 116 Third St., cor. Washington.
Prescott, Ont.	J. C. CARRUTHERS, Ticket Agent, Centre Street.
Prince Rupert, B.C.	G. F. JOHNSTON, C.P. & T.A., 526 Third Avenue.
Quebec, Que.	GEO. H. STOTT, City Pass. and Tkt. Agt., cor. St. Anne and DuFort Sts. and Ferry Landing, Dalhousie St.
Regina, Sask.	S. M. GREENE, City Pass. and Tkt. Agt., 1829 Searth St.
Saginaw, Mich.	HUGH E. QUICK, Passenger Agent, G.T. Ry. Station.
San Francisco, Cal.	F. W. HOPPER, Gen. Agent, Pass. Dept., 681 Market St.
Saskatoon, Sask.	A. F. LENON, City Pass. and Tkt. Agt., 117 Second Ave.
Seattle, Wash.	J. H. BURGESS, General Agt., Pass. Dept., 917 Second Ave.
Sherbrooke, Que.	A. M. STEVENS, City Pass. & Tkt. Agt., 2 Wellington St.
South Bend, Ind.	C. A. McNUTT, Passenger Agent, G.T. Ry. Station.
St. Catharines, Ont.	C. J. HARRIS, City Pass. and Tkt. Agt., 106 St. Paul St.
St. Paul, Minn.	W. J. GILKERSON, Gen. Agt., Pass. Dept., 400 Robert St.
Toronto, Ont.	C. E. HORNING, Dist. Pass. Agent, Union Station.
Toronto, Ont.	W. J. MOFFATT, City Pass. Agt., (N.W. cor. King
Toronto, Ont.	C. E. TENNY, City Tkt. Agt., and Yonge Sts.
Vancouver, B.C.	C. E. JENNY, Gen. Agt., Pass. Dept., 527 Granville St.
Victoria, B.C.	C. F. EARLE, City Pass. and Tkt. Agt., G.T.P. Dock.
Winnipeg, Man.	W. J. QUINLAN, District Pass. Agt., Union Station.

EUROPEAN TRAFFIC DEPARTMENT

F. C. Salter, European Traffic Manager, 17-19 Cockspur St.
London, S.W., Eng.

G. T. BELL,

Passenger Traffic Manager,
MONTREAL, QUE.

W. S. COOKSON,

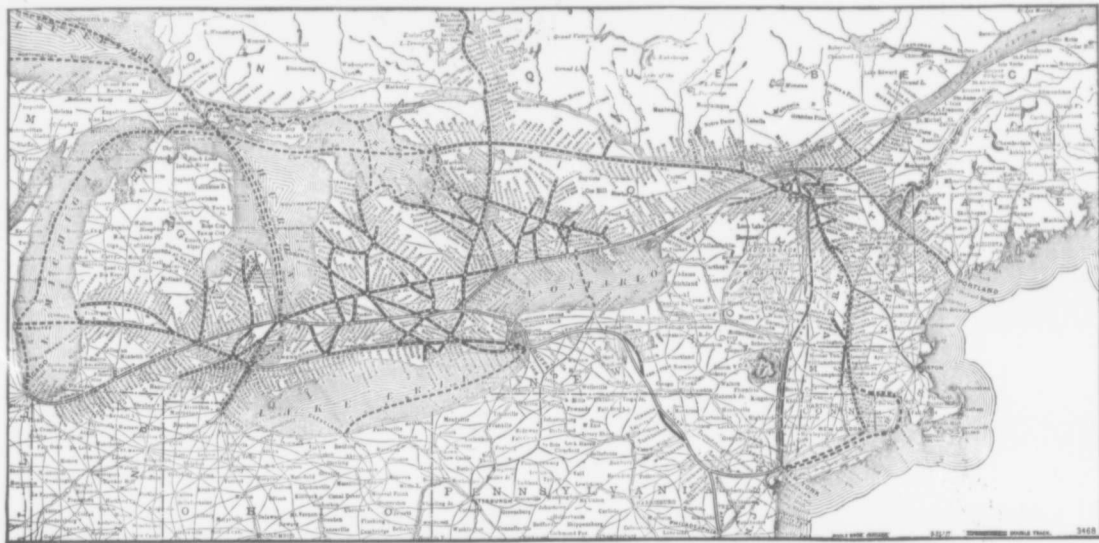
General Passenger Agent,
MONTREAL, QUE.

J. D. McDONALD,

Assistant General Passenger Agent,
CHICAGO, ILL.

C. W. JOHNSTON,

Assistant General Passenger Agent,
MONTREAL, QUE.



Map of Grand Trunk Railway System and connections.

GRAND
TRUNK
RAILWAY
SYSTEM

