

**CIHM  
Microfiche  
Series  
(Monographs)**

**ICMH  
Collection de  
microfiches  
(monographies)**



**Canadian Institute for Historical Microreproductions / Institut canadien de microreproductions historiques**

**© 1996**

## Technical and Bibliographic Notes / Notes technique et bibliographiques

The Institute has attempted to obtain the best original copy available for filming. Features of this copy which may be bibliographically unique, which may alter any of the images in the reproduction, or which may significantly change the usual method of filming are checked below.

- Coloured covers /  
Couverture de couleur
- Covers damaged /  
Couverture endommagée
- Covers restored and/or laminated /  
Couverture restaurée et/ou pelliculée
- Cover title missing / Le titre de couverture manque
- Coloured maps / Cartes géographiques en couleur
- Coloured ink (i.e. other than blue or black) /  
Encre de couleur (i.e. autre que bleue ou noire)
- Coloured plates and/or illustrations /  
Planches et/ou illustrations en couleur
- Bound with other material /  
Relié avec d'autres documents
- Only edition available /  
Seule édition disponible
- Tight binding may cause shadows or distortion  
along interior margin / La reliure serrée peut  
causer de l'ombre ou de la distorsion le long de  
la marge intérieure.
- Blank leaves added during restorations may appear  
within the text. Whenever possible, these have  
been omitted from filming / Il se peut que certaines  
pages blanches ajoutées lors d'une restauration  
apparaissent dans le texte, mais, lorsque cela était  
possible, ces pages n'ont pas été filmées.
- Additional comments /  
Commentaires supplémentaires:

L'Institut a microfilmé le meilleur exemplaire qu'il lui a été possible de se procurer. Les détails de cet exemplaire qui sont peut-être uniques du point de vue bibliographique, qui peuvent modifier une image reproduite, ou qui peuvent exiger une modifications dans la méthode normale de filmage sont indiqués ci-dessous.

- Coloured pages / Pages de couleur
- Pages damaged / Pages endommagées
- Pages restored and/or laminated /  
Pages restaurées et/ou pelliculées
- Pages discoloured, stained or foxed /  
Pages décolorées, tachetées ou piquées
- Pages detached / Pages détachées
- Showthrough / Transparence
- Quality of print varies /  
Qualité inégale de l'impression
- Includes supplementary material /  
Comprend du matériel supplémentaire
- Pages wholly or partially obscured by errata  
slips, tissues, etc., have been refilmed to  
ensure the best possible image / Les pages  
totalement ou partiellement obscurcies par un  
feuilleton d'errata, une pelure, etc., ont été filmées  
à nouveau de façon à obtenir la meilleure  
image possible.
- Opposing pages with varying colouration or  
discolourations are filmed twice to ensure the  
best possible image / Les pages s'opposant  
ayant des colorations variables ou des décolorations  
sont filmées deux fois afin d'obtenir la  
meilleure image possible.

This item is filmed at the reduction ratio checked below/  
Ce document est filmé au taux de réduction indiqué ci-dessous.

	10X		14X		18X		22X		26X		30X
							<input checked="" type="checkbox"/>				
	12X		16X		20X		24X		28X		32X

The copy filmed here has been reproduced thanks to the generosity of:

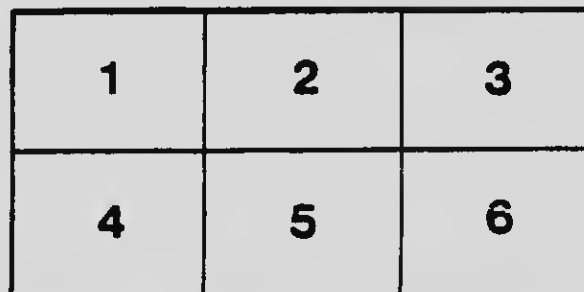
National Library of Canada

The images appearing here are the best quality possible considering the condition and legibility of the original copy and in keeping with the filming contract specifications.

Original copies in printed paper covers are filmed beginning with the front cover and ending on the last page with a printed or illustrated impression, or the back cover when appropriate. All other original copies are filmed beginning on the first page with a printed or illustrated impression, and ending on the last page with a printed or illustrated impression.

The last recorded frame on each microfiche shell contains the symbol  $\rightarrow$  (meaning "CONTINUED"), or the symbol  $\nabla$  (meaning "END"), whichever applies.

Maps, plates, charts, etc., may be filmed at different reduction ratios. Those too large to be entirely included in one exposure are filmed beginning in the upper left hand corner, left to right and top to bottom, as many frames as required. The following diagrams illustrate the method:



L'exemplaire filmé fut reproduit grâce à la générosité de:

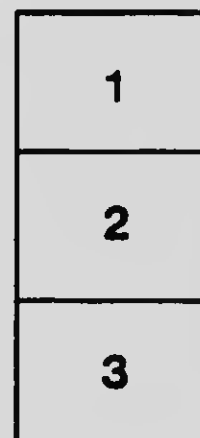
Bibliothèque nationale du Canada

Les images suivantes ont été reproduites avec le plus grand soin, compte tenu de la condition et de la netteté de l'exemplaire filmé, et en conformité avec les conditions du contrat de filmage.

Les exemplaires originaux dont la couverture en papier est imprimée sont filmés en commençant par le premier plat et en terminant soit par la dernière page qui comporte une empreinte d'impression ou d'illustration, soit par le second plat, selon le cas. Tous les autres exemplaires originaux sont filmés en commençant par la première page qui comporte une empreinte d'impression ou d'illustration et en terminant par la dernière page qui comporte une telle empreinte.

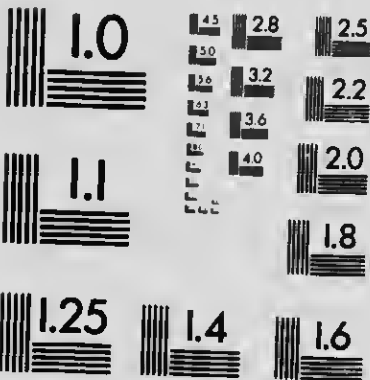
Un des symboles suivants apparaît sur la dernière image de chaque microfiche, selon le cas: le symbole  $\rightarrow$  signifie "À SUIVRE", le symbole  $\nabla$  signifie "FIN".

Les cartes, planches, tableaux, etc., peuvent être filmés à des taux de réduction différents. Lorsque le document est trop grand pour être reproduit en un seul cliché, il est filmé à partir de l'angle supérieur gauche, de gauche à droite, et de haut en bas, en prenant le nombre d'images nécessaire. Les diagrammes suivants illustrent la méthode.



# MICROCOPY RESOLUTION TEST CHART

(ANSI and ISO TEST CHART No. 2)



APPLIED IMAGE Inc

1653 East Main Street  
Rochester, New York 14609 USA  
(716) 482 - 0300 - Phone  
(716) 288 - 5989 - Fax

# Official Programme



CITY O QU BEC



## RECEPTION

...TO...

**H. S. M. Prince Louis  
of Battenberg**

**Officers and Men**

**Second Cruiser Squadron**



**11th August to 2nd September  
1905**

FD 7  
.35  
2  
175  
XX

# Quebec's Welcome



THE VISIT of the most powerful fleet ever seen in Quebec water, while it arouses patriotic feelings of

pride in the strong right arm of the Empire, inspires at the same time a desire to make the stay of our visitors as pleasant to them as possible, and we hope that when they leave us their feelings of regret at departure, will be equal to our own. With

this view, the Mayor and Citizens of Quebec have arranged a series of

sports and entertainments which they trust will be to the taste of our gallant sailors, and help them to spend their time on shore in a pleasant manner, and of which the following is the official programme :—



National Library  
of Canada

Bibliothèque nationale  
du Canada

# PROGRAMME

AUGUST 11th

Arrival of Second Cruiser Squadron

AUGUST 14th

4 P.M.

*Afternoon Tea and Reception*

*at the Quebec Tennis Courts*

9 30 P.M.

*The Premier of the Province of Quebec  
and the*

*Members of the Executive Council  
have issued invitations*

*to a Ball*

*at the Parliament House*

8.30 and 8.30 P.M.—VAUDEVILLE PERFORMANCE at  
Rustie Theatre, Montmorency Falls.

AUGUST 15th

8 P.M.—(SPECIAL)

**Grand Pyrotechnic Display**

**ON THE CITY WALLS**

**General Illuminations**



**Programme—CONTINUED**

**AUGUST 15th**

**3 P.M.**

Civic Holiday and **PRESENTATION** of **CIVIC ADDRESS** at the Esplanade.

**3 P.M.**

*Unveiling of the* **Quebec Soldiers' Monument**  
*by His Excellency the Governor General.*

Troops consisting of the 1st Field Battery, 10th Hussars, Royal Canadian Garrison Artillery, Royal Canadian Regiment, 8th Royal Rifles, 9th Voltigeurs, Bearer Company and Field Hospital, besides detachments from the various ships of the 2nd Cruiser Squadron, will be formed up around the Monument.



Six Trumpeters facing the West, immediately upon the unveiling by His Excellency, will sound the . . .

***Last Post***

A Firing Party, consisting of 100 men of the R. C. G. A., will fire three volleys, and after which all the troops present will

***Present Arms***

The **COUNTESS GREY** will place 2 wreaths at the base of Statue, one for the Quebec Branches of the Daughters of the Empire, and one for the President of the Society.

**3 30 P M.**

**VAUDEVILLE PERFORMANCE** at Rustic Theatre  
Montmorency Falls

**4 P.M.**

*Garden Party and Reception at the Garrison Club.*

**8.30 P. . .**

**VAUDEVILLE PERFORMANCE** at Rustic Theatre  
Montmorency Falls



Programme - CONTINUED



10 A.M.

AUGUST 16th



## Cricket Match

on the

Q. N. A. A. Grounds

Grande Allée

MARYLEBONE C. C.

vs.

QUEBEC C. C.

Admission **FREE** to members of the Royal Navy.

3.30 P.M.

Vaudeville Performance at Rustic Theatre  
Montmorency Falls

8.30 P. .

Vaudeville Performance at Rustic Theatre  
Montmorency Falls

9.30 P.M.

*The Excellencies the Governor-General  
and the Countess Grey  
have issued invitations to a Ball  
at the Citadel*



**Programme—CONTINUED**

10 A.M.                   AUGUST 17th  
***Cricke<sup>t</sup> Match***

*on the*  
***Q. A. A. A. Grounds***

**MARYLEBONE C. C vs. QUEBEC C. C.**

**Admission FREE to Members of the Royal Navy**

3.30 P.M.

**Vaudeville Performance at Rustic Theatre  
Montmorency Falls**

8 P.M.

***Smoking Concert and Reception***  
*at the*  
***Drill Hall***

**PROGRAMME**

The Programme will include Popular Selections by R. C. G. A. Band, Single Stick Competitions, Boxing Contests, and various items from members of the Fleet and professional talent.

*See* See daily papers for detail.

**Admission FREE to Members of the Royal Navy  
and all Soldiers in uniform.**

8.30 P.M.

**Vaudeville Performance at Rustic Theatre  
Montmorency Falls**

Programme—CONTINUED



AUGUST 18th

3.30 P.M.

Vaudeville Performance at Rustic Theatre  
Montmorency Falls

8 P.M.

## Naval & Military Tournament

### Quebec Skating Rink

¼ Mile Race.

1 Mile Race.

Sack Race.

Human Wheelbarrow Race.

Relief Race.

Tug of War, teams of 10 men, weight limit 1750 lbs.

Single Stick Competition. —Bayonet vs Sword.

Tent Pitching, teams of 1 N. C. O. and 5 men.

Balaclava Melee.

Bayonet Fighting, teams, leader and 6 men

Hop, Step, and Jump.

Exhibition, Quarter Staff members R. C. R.

Knights of Malta,—Mop competition.

Exhibition Drill by Sailors. Dismounting Gun, Sailors.

**All events open to R. N. and Quebec Garrison.**

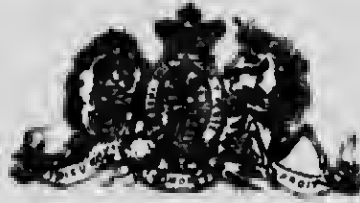
ADMISSION . . . . . 25c

GALLERIES . . . . . 10c extra

ADMISSION FREE TO ALL MEMBERS OF THE ROYAL NAVY.

8.30 P.M.

Vaudeville Performance at Rustic Theatre  
Montmorency Falls



Patronized by H. R. H. the Princess Louise

# **G. SEIFERT & Sons**

**Jewellers and . . . .  
Diamond Merchants**

**16, Fabrique St., Quebec**



HALL MARKED SILVER WARES  
FINE GOLD JEWELLERY  
ANTIQUÉ SILVER  
ANTIQUÉ CLOCKS

---

**Quebec Fresh Water Pearls. Souvenirs  
of the City of Quebec in Solid Gold.  
Sterling Silver and Porcelaine**

---

**Expert Watch Repairers**

Programme—CONTINUED



AUGUST 19th

2.30 P.M.

*Grand Regatta and Races*

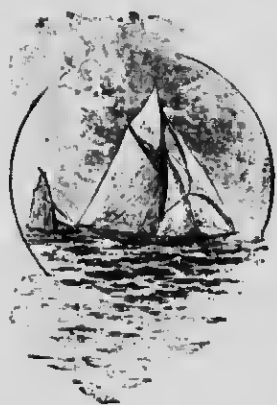
ON THE RIVER

UNDER THE AUSPICES OF THE

*QUEBEC YACHT CLUB*

\$500 IN MONEY PRIZES

PROGRAMME



- 1st. 16-oared Pinnaces, 36 feet.
- 2nd. 14-oared Barges, 32 feet.
- 3rd. 6-oared Gigs, 28 and 32 feet.
- 4th. 5-oared Whalers, 27 feet.
- 5th. Steam Picket Boats, 6 or 7 men.
- 6th. 3-paddle Canoe Race (amateurs.)
- 7th. Market Boat Race.
- 8th. Log Rolling Competition.

3 P.M.

**Championship Lacrosse Match**

Q. A. A. Grounds

**Sherbrooke vs. Montcalm**

(of Sherbrooke)

(of Quebec)

2 hours' play rain or shine

Admission FREE to all members of the Royal Navy.



---

Programme—CONTINUED

---

AUGUST 19th

3 P.M.

*Cricket Match*

**The Fleet vs. Quebec C. C.**

At the Kent House Grounds, Montmorency Falls.

3.30 P.M.

Vaudeville performance at Rustic Theatre  
Montmorency Falls

8.30 P.M.

Vaudeville performance at Rustic Theatre  
Montmorency Falls.

---

AUGUST 20th

3 30 P.M.

Vaudeville Performance at Rustic Theatre  
Montmorency Falls

4 P.M.

**AUDITORIUM**

**Naval Service** conducted by the Quebec Sailors' Institute under the auspices of the Protestant Ministerial Association and the Y. M. C. A., assisted by a choir of 150 voices under Mr. Chas. Thorn.

8.30 P.M.

Vaudeville Performance at Rustic Theatre  
Montmorency Falls

---

**Programme—CONTINUED**

---



**AUGUST 22nd.**

**3.30 P.M.**

Vaudeville Performance at Rustic Theatre  
Montmorency Falls

**8.30 P.M.**

Vaudeville Performance at Rustic Theatre  
Montmorency Falls

---

**AUGUST 24th**

**3.30 P.M.**

Vaudeville Performance at Rustic Theatre  
Montmorency Falls

**8 P. M.**

**Y. M. C. A.**

**SAILORS' CONCERT** under the management  
of the Quebec Sailors' Institute, Y. M. C. A. and  
Ladies.

**REFRESHMENTS**

**8.30 P.M.**

Vaudeville Performance at Rustic Theatre  
Montmorency Falls



When you want a

## GOOD DRINK

One that will satisfy you from the ground up, just step into the nearest club, hotel, café or restaurant and order a bottle of

## TIMMONS' Ginger Ale

or better still, order a supply from your dealer and enjoy solid comfort at home. The satisfaction of getting the best that money can buy, or knowledge can produce, goes with every bottle.

**Sold on its merits everywhere**

**Drink**

**IRON BREW  
THE IDEAL TONIC**



Programme—CONTINUED



AUGUST 26 h

1.45 P.M.

*Regatta and Fete de Nuit*

At LAKE ST. JOSEPH

INCLUDING

*Indian Canoe Racing*

See Q. & L. St. J. R. folders for time of departure and arrival  
of trains.

3.30 P.M.

Vaudeville Performance at Rustic Theatre  
Montmorency Falls

*Cricket Match, Q.A.A.A. Grounds*

THE FLEET vs. QUEBEC C. C.

ADMISSION FREE

8.30 P.M.

Vaudeville Performance at Rustic Theatre  
Montmorency Falls



---

**Programme—CONTINUED**

**AUGUST 27th**

**3.30 P.M.**

VAUDEVILLE PERFORMANCE AT RUSTIC THEATRE  
Montmorency Falls

**4 P.M.**

**AUDITORIUM**

NAVAL SERVICE as on previous Sunday.

**8.30 P.M.**

VAUDEVILLE PERFORMANCE at RUSTIC THEATRE  
Montmorency Falls

---

**AUGUST 30th**

**3.30 P.M.**

VAUDEVILLE PERFORMANCE at RUSTIC THEATRE  
Montmorency Falls

**8 P.M.**

**Y. M. C. A. HALL**

SAILORS' CONCERT under the management of the Quebec  
Sailors' Institute, Y. M. C. A. and Ladies.

**8.30 P.M.**

VAUDEVILLE PERFORMANCE at RUSTIC THEATRE  
Montmorency Falls



AUGUST 3<sup>rd</sup>

2.30 P.M.



First Day

Turf Club Races on the Exhibition Grounds

Including the "King's Plate"

PROGRAMME

THE MAIDEN.—One mile.

THE WOLFSFIELD.—One and a half miles.

THE KING'S PLATE.—One and a quarter miles.

LOCAL RACE.—One mile.

SELLING RACE.—Three quarter mile.

ST. LOUIS HURDLE RACE.—Two miles.



3.30 and 8.30 P.M.—VAUDEVILE PERFORMANCE at  
Rustic Theatre, Montmorency Falls

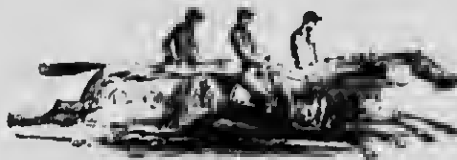


---

**Programme—CONTINUED**

---

**SEPT. 2nd**



**Second Day**

**Turf Club Races on the Exhibition Grounds**

**PROGRAMME**

**MERCHANTS' PURSE.—One mile.**

**THE BEAUVOIR HANDICAP.—One and a half miles.**

**TOWN PLATE.—Three quarter mile.**

**LOCAL RACE.—One mile.**

**ST. FOYE HURDLE.—Two miles**

**CONSOLATION RACE.—Three quarter mile.**

---

The President and Officers of the Quebec Tennis Club have kindly placed the Courts of the Club at the disposal of the Officers of the Fleet during their visit.

The General Manager of the Quebec Ry. L. & P. Co., Mr. E. A. Evans, has kindly fixed a half-fare rate for all members of the Royal Navy over the line of the Q. R. L. & P. Co. during their visit. A trip to Montmorency Falls and the Shrine of Ste. Anne de Beaupré is recommended.

The General Manager of the Jacques Cartier Water Power Coy., Mr. J. M. McCarthy, has kindly offered to illuminate the Soldiers' Monument during the visit of the Fleet.

The Rifle Ranges are open to visitors daily.  
A Cup valued at \$75 has been put up for a team competition.

