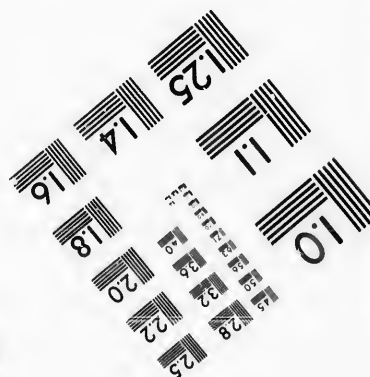
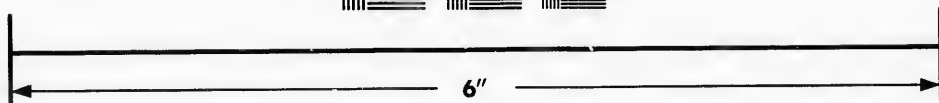
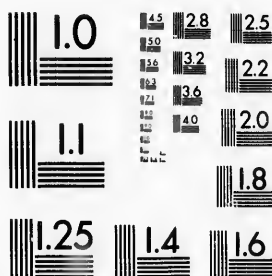


**IMAGE EVALUATION
TEST TARGET (MT-3)**



**Photographic
Sciences
Corporation**

23 WEST MAIN STREET
WEBSTER, N.Y. 14580
(716) 872-4503

15 28
16 32
18 22
20
18

**CIHM/ICMH
Microfiche
Series.**

**CIHM/ICMH
Collection de
microfiches.**



Canadian Institute for Historical Microreproductions / Institut canadien de microreproductions historiques

10
15

© 1987

The copy filmed here has been reproduced thanks to the generosity of:

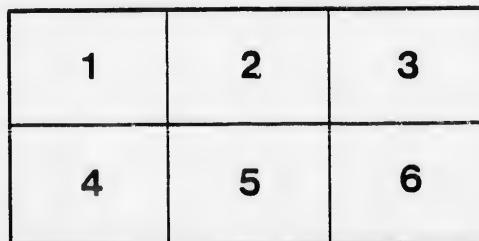
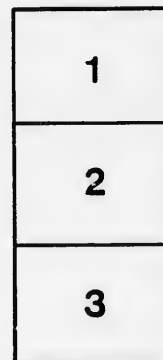
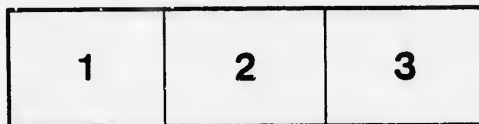
D. B. Weldon Library
University of Western Ontario
(Regional History Room)

The images appearing here are the best quality possible considering the condition and legibility of the original copy and in keeping with the filming contract specifications.

Original copies in printed paper covers are filmed beginning with the front cover and ending on the last page with a printed or illustrated impression, or the back cover when appropriate. All other original copies are filmed beginning on the first page with a printed or illustrated impression, and ending on the last page with a printed or illustrated impression.

The last recorded frame on each microfiche shall contain the symbol \rightarrow (meaning "CONTINUED"), or the symbol ∇ (meaning "END"), whichever applies.

Maps, plates, charts, etc., may be filmed at different reduction ratios. Those too large to be entirely included in one exposure are filmed beginning in the upper left hand corner, left to right and top to bottom, as many frames as required. The following diagrams illustrate the method:



L'exemplaire filmé fut reproduit grâce à la générosité de:

D. B. Weldon Library
University of Western Ontario
(Regional History Room)

Les images suivantes ont été reproduites avec le plus grand soin, compte tenu de la condition et de la netteté de l'exemplaire filmé, et en conformité avec les conditions du contrat de filmage.

Les exemplaires originaux dont la couverture en papier est imprimée sont filmés en commençant par le premier plat et en terminant soit par la dernière page qui comporte une empreinte d'impression ou d'illustration, soit par le second plat, selon le cas. Tous les autres exemplaires originaux sont filmés en commençant par la première page qui comporte une empreinte d'impression ou d'illustration et en terminant par la dernière page qui comporte une telle empreinte.

Un des symboles suivants apparaîtra sur la dernière image de chaque microfiche, selon le cas: le symbole \rightarrow signifie "A SUIVRE", le symbole ∇ signifie "FIN".

Les cartes, planches, tableaux, etc., peuvent être filmés à des taux de réduction différents. Lorsque le document est trop grand pour être reproduit en un seul cliché, il est filmé à partir de l'angle supérieur gauche, de gauche à droite, et de haut en bas, en prenant le nombre d'images nécessaire. Les diagrammes suivants illustrent la méthode.

ails
du
modifier
une
page

rrata
o

belure,
n à

32X

NOTICE

Brethern who wish to change
ought to do so prior to the 1st of the
when made, cannot be altered until t

Brethern, pay to Local Agent, a
will be sent, those sending direct to th
lower part of the notice with am

NO Post Cards Wanted.

Notify Secretary of changes of

Brethren requiring change of
will be required to furnish doctor's c

No. 2 assessment expires April 16th, 1886.

NOTICE.

to change the amount of insurance,
1st of the month, as the assessment
is deferred until the following month.

Local Agent, as before, to whom receipts
should be sent direct to the Head Office, send only
the amount sent marked on it.
Noted.

Changes of P. O. or Lodge address.

Change of Insurance after this date
requires a doctor's certificate.

1886.

H. A. BAXTER, Sec.

FOLIO.....

ASSESSMENT No. 3, for 1886.

LONDON MASONIC MUTUAL B

Secretary's Office Room D, Temple Buil

LONDON

No. Policy	NAME.	Age	Lodge and No.	Residence
1716	C. Dawes.	54	Composite 50	Port Perry
4208	J. W. Alford	47	Peterboro, 55	Peterboro
1923	J. W. Imlay	57	Dalhousie, 52	Ottawa

Dear Sir & Brother: The above deaths having been
 an assessment of \$ ^{1.96}100 is due within 30

No. 1152 grade C on \$ 1000

Remit per instructions to local agents, or to H

P.

Date of Issue	Assessment		To your		To your	
	No. 3		Debt Previously		Credit Previous	
	\$	c.	\$	c.	\$	c.
March.	9	196	 		1	98

amt of - Apr 3/86

36.

DEATHS 7 8 & 9 for 1886.**MUTUAL BENEFIT ASSOCIATION.****D, Temple Building, Richmond Street.****LONDON, ONT. March, 15th, 1886.**

No.	Residence	Cause of Death.	Date of	
			Joining.	Death.
	Port Perry	Cerebritis	July 3 '73	Feb. 8 '86
	Peterboro	Syncope	June 12 '83	Feb. 12 '86
	Ottawa	Tumour	Oct. 28 '73	Feb. 14 '86

Deaths having been reported, and passed the Board,
 due within 30 days from date hereof on your

1000

agents, or to **H. A. BAXTER, Secretary.**

P. O. Drawer 514, London, Ontario.

To your		DUE		To your Credit	
Credit Previously		Within 30 days.		in advance at date.	
\$	c.	\$	c.	\$	c.
1	98	—	88	—	—

