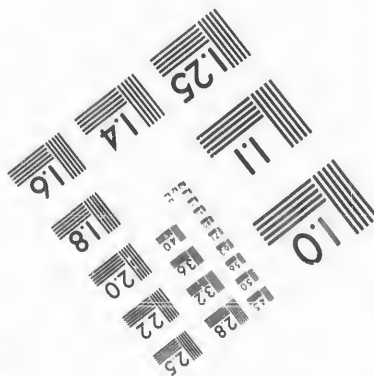
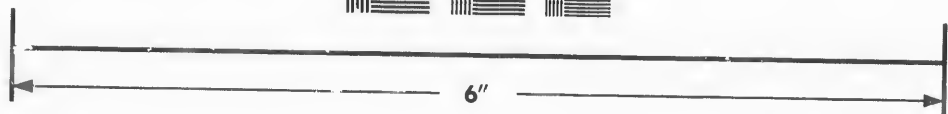
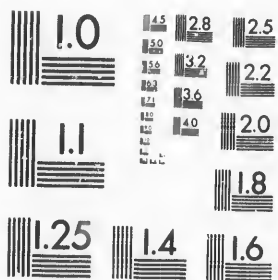


IMAGE EVALUATION
TEST TARGET (MT-3)



Photographic
Sciences
Corporation

23 WEST MAIN STREET
WEBSTER, N.Y. 14580
(716) 872-4503

**CIHM/ICMH
Microfiche
Series.**

**CIHM/ICMH
Collection de
microfiches.**



Canadian Institute for Historical Microreproductions / Institut canadien de microreproductions historiques

© 1986

Technical and Bibliographic Notes/Notes techniques et bibliographiques

The Institute has attempted to obtain the best original copy available for filming. Features of this copy which may be bibliographically unique, which may alter any of the images in the reproduction, or which may significantly change the usual method of filming, are checked below.

L'Institut a microfilmé le meilleur exemplaire qu'il lui a été possible de se procurer. Les détails de cet exemplaire qui sont peut-être uniques du point de vue bibliographique, qui peuvent modifier une image reproduite, ou qui peuvent exiger une modification dans la méthode normale de filmage sont indiqués ci-dessous.

- Coloured covers/
Couverture de couleur
- Covers damaged/
Couverture endommagée
- Covers restored and/or laminated/
Couverture restaurée et/ou pelliculée
- Cover title missing/
Le titre de couverture manque
- Coloured maps/
Cartes géographiques en couleur
- Coloured ink (i.e. other than blue or black)/
Encre de couleur (i.e. autre que bleue ou noire)
- Coloured plates and/or illustrations/
Planches et/ou illustrations en couleur
- Bound with other material/
Relié avec d'autres documents
- Tight binding may cause shadows or distortion along interior margin/
La reliure serrée peut causer de l'ombre ou de la distorsion le long de la marge intérieure
- Blank leaves added during restoration may appear within the text. Whenever possible, these have been omitted from filming/
Il se peut que certaines pages blanches ajoutées lors d'une restauration apparaissent dans le texte, mais, lorsque cela était possible, ces pages n'ont pas été filmées.
- Additional comments:
Commentaires supplémentaires:
- Coloured pages/
Pages de couleur
- Pages damaged/
Pages endommagées
- Pages restored and/or laminated/
Pages restaurées et/ou pelliculées
- Pages discoloured, stained or foxed/
Pages décolorées, tachetées ou piquées
- Pages detached/
Pages détachées
- Showthrough/
Transparence
- Quality of print varies/
Qualité inégale de l'impression
- Includes supplementary material/
Comprend du matériel supplémentaire
- Only edition available/
Seule édition disponible
- Pages wholly or partially obscured by errata slips, tissues, etc., have been refilmed to ensure the best possible image/
Les pages totalement ou partiellement obscurcies par un feuillet d'errata, une pelure, etc., ont été filmées à nouveau de façon à obtenir la meilleure image possible.

This item is filmed at the reduction ratio checked below/
Ce document est filmé au taux de réduction indiqué ci-dessous.

10X	12X	14X	16X	18X	20X	22X	24X	25X	28X	30X	32X
						/					

The copy filmed here has been reproduced thanks to the generosity of:

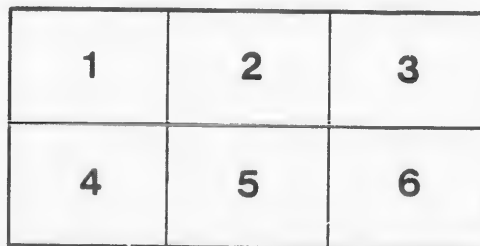
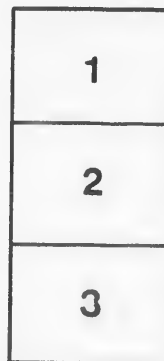
D. B. Weldon Library
University of Western Ontario
(Regional History Room)

The images appearing here are the best quality possible considering the condition and legibility of the original copy and in keeping with the filming contract specifications.

Original copies in printed paper covers are filmed beginning with the front cover and ending on the last page with a printed or illustrated impression, or the back cover when appropriate. All other original copies are filmed beginning on the first page with a printed or illustrated impression, and ending on the last page with a printed or illustrated impression.

The last recorded frame on each microfiche shall contain the symbol \rightarrow (meaning "CONTINUED"), or the symbol ∇ (meaning "END"), whichever applies.

Maps, plates, charts, etc., may be filmed at different reduction ratios. Those too large to be entirely included in one exposure are filmed beginning in the upper left hand corner, left to right and top to bottom, as many frames as required. The following diagrams illustrate the method:



L'exemplaire filmé fut reproduit grâce à la générosité de:

D. B. Weldon Library
University of Western Ontario
(Regional History Room)

Les images suivantes ont été reproduites avec le plus grand soin, compte tenu de la condition et de la netteté de l'exemplaire filmé, et en conformité avec les conditions du contrat de filmage.

Les exemplaires originaux dont la couverture en papier est imprimée sont filmés en commençant par le premier plat et en terminant soit par la dernière page qui comporte une empreinte d'impression ou d'illustration, soit par le second plat, selon le cas. Tous les autres exemplaires originaux sont filmés en commençant par la première page qui comporte une empreinte d'impression ou d'illustration et en terminant par la dernière page qui comporte une telle empreinte.

Un des symboles suivants apparaîtra sur la dernière image de chaque microfiche, selon le cas: le symbole \rightarrow signifie "A SUIVRE", le symbole ∇ signifie "FIN".

Les cartes, planches, tableaux, etc., peuvent être filmés à des taux de réduction différents. Lorsque le document est trop grand pour être reproduit en un seul cliché, il est filmé à partir de l'angle supérieur gauche, de gauche à droite, et de haut en bas, en prenant le nombre d'images nécessaire. Les diagrammes suivants illustrent la méthode.

THE CROWNING
OF MUSIC



GRAND
OPERA HOUSE,
LONDON, ONT.
SEASON
1899-1900.

Anderson Musical Co

No. 27-29 / 99

SMITH BROS.,

TELEPHONE
538

LEADING PLUMBERS.

265 DUNDAS STREET, - LONDON, ONT.

Advertiser Job Dept.

WHERE PEOPLE CONGREGATE, THERE ADVERTISE.

THE
PROGRAMME...

The primary idea of this Programme is, of course, to enlighten the audience as to the personnel of the artists taking part in the performances, incidentally to serve as a guide to the plot of the piece, and generally to give such information as will tend to the enjoyment of the auditor.

But there is a fund of information in the advertisements that may be seriously considered with profit.

The publishers are prepared to attend to all business in the way of general and special advertising.

Respectfully,

BELTON & ROOT,
Advertising Agents.

HARRY MCKENNA,

DEALER IN...

CHOICE TOBACCONIST'S GOODS,

Always Open after the Opera.

Retail and Wholesale.

225 DUNDAS STREET.

Read and Reflect.

The management reserves the right to refuse admission to anyone.

DOORS open for matinees at 2 p. m. ; curtain rises at 2.30 p. m.
Evenings.—Doors open at 7.30, and curtain rises at 8.15 p. m. sharp.
Tickets can be reserved two days in advance without extra charge.
Office open from 9 a. m. to 5 p. m.

Seats can be secured by mail, telegraph or telephone. Telephone 732.

Seats ordered by Telephone or in Person, and not called for by 7.30 o'clock on the night of performance, will then be sold to avoid loss to the Theatre.

Physicians are requested to register at the Box Office, leaving seat number as this will enable Ushers to find them, if called for, without disturbing the audience.

Children in arms not admitted to evening performances. Children three years old or over, full price.

Patrons will confer a favor by reporting to the management any incivility or inattention on the part of the employees, and annoyances of any nature.

If the individual members of an audience would stop to think for just an instant, they would undoubtedly appreciate the fact that the habit of rising from their seat and leaving the theatre before the curtain falls, is a most annoying one, and one that should be stopped. We therefore beg our audiences to kindly remain in their seats until the close of the performance.

Carriages can be ordered at the Box Office or of the Chief Usher.

For all lost articles, apply at Box Office.

It is strange, but there is a class of people that seem to take an intense delight in bespattering the floor with tobacco juice, and in being boisterous and using profane language. These people should know at once that the courts authorize their immediate expulsion, should the management seem fit to exercise its rights.

Slater Bros

...TAILORS...

Telephone 844.

399 Richmond St., LONDON.

Grand Opera House

LONDON, ONT.

C. J. WHITNEY, Lessee.

SEASON 1899-1900.

A. E. ROOT, Manager.

PROGRAMME.

MONDAY, NOVEMBER 27th.

Anderson Theatre Co.

In the Great Play,

The World

CAST OF CHARACTERS.

Harry Ellison.....	Clyde B. Callicotte	Krigger.....	Royce Alton
Dovereaux Powers.....	Cliff Storch	Bill Bowlin.....	Wm. Ellis
Dennis.....	Ed. Anderson	Jack Salt.....	John Bell
Moses Abrams.....	Tot Young	Sam Seabright..	Walter Stevens
Captain Dickson.....	Van Bert Adams	Rose Ellison.....	Kathryn Browne
Jim Dalton.....	Asylum } James Evans	Jennie Graham.....	Mae Dudley
Dan. Mason.....	Keepers } Lee Holton	Mrs. Vincent.....	Bertha Davidson

Programme continued on next page.

BELTON
AND
ROOT

Bill Posting, Distributing and General Advertising Agents

Control all the Bill Boards and Dead Walls throughout the City. Population of City, 40,000. All orders for Bill Posting, Distributing, Card Tacking, and General Advertising for Western Ontario will receive prompt attention.

OFFICE:—BOX OFFICE OPERA HOUSE

The London Daily News has the largest sworn cir-

SMOKE THE 



VETERAN

10c. Cigar.



MANUFACTURED BY:

W. C. ROSS, London.

PROGRAMME.

SYNOPSIS.

ACT 1.—The shipping dock. The rescue. The fight. Escape on the tug boat.
ACT 2.—The steamship. The storm. The sinking ship.
ACT 3.—The raft in mid-ocean. "A sail! A sail!" We are saved! We are saved!
ACT 4.—The Vincent villa.
ACT 5.—Dungeon in the asylum. The tables turned.
ACT 6.—Parlor in Grand Hotel, Boston. The settlement. The accusation. The wages of sin is death.

LIZZIE SMITH, Musical Director.

Specialties Between Acts.

Fanchette, the Parisian dancer, in the Kaleidoscope dance.
The Victorellis, English shadowgraph artists.
Ed. Anderson, up-to-date monologist.
Tot Young, the banjo wizard.
Mae Dudley, soubrette.

ED. ANDERSON, Manager.

MATINEE WEDNESDAY, 2 P.M.

The Great Moral Play, **EAST LYNNE.**

Programme continued on next page.

Buy your DIAMONDS and WATCHES, at
WARD'S JEWELRY, 374 Richmond Street.

—Coming Soon—

Otis..

Skinner



Primrose & Dockstader's

MINSTRELS.

circulation in Canada, Toronto and Montreal excepted.

High Grade

Toilet Soaps,

Perfumes and

Toilet Powders.

A NEW
IMPORTATION
...JUST RECEIVED...

W. T. STRONG & CO.

Dispensing Chemists,
184 DUNDAS STREET,
LONDON.

PROGRAMME.

TUESDAY, NOVEMBER 28th.

MYSTIC MOUNTAIN

Cast of Characters.

Milton Ashley, a tourist		Clyde B. Callicotte
Zeke Killicut, Marshal of Pinyville		Cliff Storch
Dick Craddock, a reformed drunkard		Ed. Anderson
Colonel Baxter, Mayor of Pinyville		Van Bert Adams
Hickery, an Arkansas negro		Tot Young
John Hefford, a minister		Royce Alton
Hank White	} Moonshiners {	Will Wise
Bill Dawson		Jack Wildes
Lize Williams		A. G. Double
Jim Hankins		James Evans
Tib Craddock, a mountain girl		Mae Dudley
Mother Staplejohn, a fortune teller		Bertha Davidson
Mrs. Hefford, a true wife		Kathryn Browne

Programme continued on next page.

....Free Admission to this Theatre may be made by buying....

GAS

GOKE

Now \$4.00 per Ton.

Will Advance Later On.

• • •

Equal in every respect
to Hard Coal

FOR.....

Furnaces, Base Burners,
Ranges and Grates.

CITY GAS COMPANY, 401 Clarence Street.

Smoke David Harum Cigar.

A. WOLF,

Tobacconist

Has an assortment of Imported Cigars that is worth considering.

366 Richmond Street.
202½ Dundas Street.

WM. STEVELY & SON,

—DEALERS IN—

Cooking and Heating Stoves and Ranges for Coal or Wood, Lamp Goods, Cutlery and General House Furnishings.

362 RICHMOND STREET.

F. N. Harvey, L.D.S.

DENTIST

204 DUNDAS STREET.

OFFICE RESTAURANT

Opposite the Richmond Street exit of Opera House.

Choice Wines, Liquors and Cigars.
Dining Parlors Upstairs.

—D. SARE.

PROGRAMME.

SYNOPSIS.

ACT 1.—Pinyville, Arkansas. The plot. The murder. Hiokery and the kodak.
ACT 2.—The moonshiners' still. The fortune teller. Ashley in peril. The rescue.
ACT 3.—Exterior of Baxter's home. Killicut's offer. The telegram from Little Rock.
ACT 4.—Interior of Baxter's home. Back from Little Rock. The tell-tale photograph. The kodak proves the real murderer.

Specialties Between Acts.

Tot Young, the banjo wizard.
Mac Dudley, rag-time singer.

Ed. Anderson, up-to-date monologist.
The Victorellis, in dissolving views.

MATINEE, WEDNESDAY, 2 P.M.

The Great Moral Play, **EAST LYNNE.**

Programme continued on next page.

"MATCHLESS BELL PIANOS" Take the Lead.

Used exclusively at Grand Opera House.

SANBORN & TREBILCOCK, Sole Agents for London, 183 Dundas Street.

Charlie, please take me to the Fashionable Restaurant, No. 357 Richmond St., to have some Oysters after the Show.

Smoke Uneeda Cigar.

High-toned Instruments for
Cultured People

The MASON & BISCH PIANO

Is the acme of Musical Perfection—The Crowned
King of Stringed Harmony.

LONDON WAREROOMS—213 Dundas Street.

Wednesday, November 29th.

CANON BALL EXPRESS

CAST OF CHARACTERS.

Old Tom, a Boatman, formerly known as Frank Dalton.....	Ed. Anderson
Gordon Chumley, Captain in the Light Dragoons.....	Clyde B. Callicott
Sir George Medhurst, under the assumed name of Hayward.....	Van Bert Adams
Richard Knatchbull, alias Chandos Bellingham, a man about town.....	Cliff Storch
Dacey Morris, a Jew, proprietor of the Silver Gambling Den and Elysium Concert Hall....	Tot Young
Poynter, on the force.....	Royce Alton
Area Jack.....	Jim Holton
The Barge.....	Jas. Evans
Jemmy.....	Will. Wise
Eliza, Sir George's wife.....	Kathryn Browne
Rose Edgerton, of Medhurst Grange.....	Mae Dudley
Mother Josie, keeper of a cheap lodging house.....	Bertha Davidson

SYNOPSIS.

ACT 1.—Outside the railroad station. The lost heir. George and Eliza. The escape. The gambling den. The gamblers raided.

ACT 2.—London at night (showing the River Thames and St. Paul's Cathedral). Old Tom and Chumley. The attempted suicide. Old Tom to the rescue.

ACT 3.—Old Tom's home. Tom and Eliza. The story. The drunkard's child. The lilacs. The interrupted wedding. Who is this then? My wife.

ACT 4.—Elysium music hall. The drug. The railroad tunnel. Insensible on the track. The Cannon Ball Express. Old Tom the hero. Saved! Saved! Thank God.

ACT 5.—The lilacs. The arrest. Father and child. The hand of justice.

SPECIALTIES BETWEEN ACTS.

Fanchette, the Parisian dancer, in the Kaleidoscope Dance. Tot Young, the banjo wizard. The Victorellis, English shadowgraph artists. Ed. Anderson, up-to-date monologist.

For Latest Styles.....
Nobby, Well Made Clothes,


GO TO

FAIRBAIRN

...The Tailor

Opposite City Hall, Richmond St.

A good advertiser recognizes the value of a good medium. Theatres are the attractions, Programmes the medium. Try them.

T. CONNOR
 Wholesale and Retail
 Butcher. 
 Stralls, 6 & 7 Covent Garden Market.

The Original Swiss Electro Chemical Ring

ESTABLISHED 1878
 None genuine without Trade-Mark in each ring. The first introduced in America. All others are imitations.

Rheumatism
 in all its various forms. **Neuralgia, Gout, Lumbago, Diabetes, Bright's Disease, Asthma** are all caused by **Uric Acid in the blood.** The Metals of which this ring is composed, in connection with the acid create an **Electro-Chemical** action, removing the acid and curing the disease.

123 California St.
 San Francisco, Cal. Just 1200-49

Price \$2
SILVER COVERED \$3
GOLD COVERED \$4

Sent by mail or C.O. Express. For size cut hole in card that fits finger or jeweler's measure money refunded if not satisfactory after wearing 30 days.

THE SWISS-AMERICAN RING CO.
 EXPRESS BUILDING 4 OPERA BLUCK
 WINDSOR, ONT., CANADA DUKETT DETROIT, MICH. U.S.A.

Advertising is the foundation of all successful enterprises. If your advertisement was here it would be read by every visitor to this theatre.

Established 1892. The Monroe Improved Gold Cure! No bad after effects. Safe and Reliable Treatment for the cure of Alcohol, Morphine, Cocaine and Tobacco Habits. Send for pamphlet. H. J. McKAY, Prop., Windsor, Ont. 46-48 Pitt Street W. P. O. Box 446. Telephone 175.



