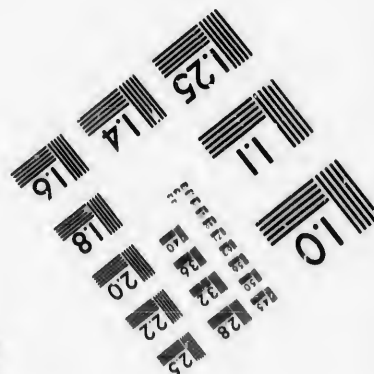
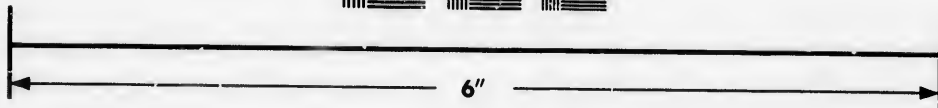
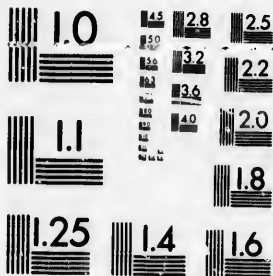


**IMAGE EVALUATION
TEST TARGET (MT-3)**



**Photographic
Sciences
Corporation**

23 WEST MAIN STREET
WEBSTER, N.Y. 14580
(716) 872-4503

1.8
2.0
2.2
2.5
2.8
3.2
3.6
4.0

**CIHM/ICMH
Microfiche
Series.**

**CIHM/ICMH
Collection de
microfiches.**



Canadian Institute for Historical Microreproductions / Institut canadien de microreproductions historiques

1.8
2.0
2.2
2.5
2.8
3.2
3.6
4.0

© 1986

Technical and Bibliographic Notes/Notes techniques at bibliographiques

The Institute has attempted to obtain the best original copy available for filming. Features of this copy which may be bibliographically unique, which may alter any of the images in the reproduction, or which may significantly change the usual method of filming, are checked below.

L'Institut a microfilmé le meilleur exemplaire qu'il lui a été possible de se procurer. Les détails de cet exemplaire qui sont peut-être uniques du point de vue bibliographique, qui peuvent modifier une image reproduite, ou qui peuvent exiger une modification dans la méthode normale de filmage sont indiqués ci-dessous.

- Coloured covers/
Couverture de couleur
- Covers damaged/
Couverture endommagée
- Covers restored and/or laminated/
Couverture restaurée et/ou pelliculée
- Cover title missing/
Le titre de couverture manque
- Coloured maps/
Cartes géographiques en couleur
- Coloured ink (i.e. other than blue or black)/
Encre de couleur (i.e. autre que bleue ou noire)
- Coloured plates and/or illustrations/
Planches et/ou illustrations en couleur
- Bound with other material/
Relié avec d'autres documents
- Tight binding may cause shadows or distortion along interior margin/
La reliure serrée peut causer de l'ombre ou de la distorsion le long de la marge intérieure
- Blank leaves added during restoration may appear within the text. Whenever possible, these have been omitted from filming/
Il se peut que certaines pages blanches ajoutées lors d'une restauration apparaissent dans le texte, mais, lorsque cela était possible, ces pages n'ont pas été filmées.
- Additional comments: [Printed ephemera] 1 sheet (verso blank)
Commentaires supplémentaires:

- Coloured pages/
Pages de couleur
- Pages damaged/
Pages endommagées
- Pages restored and/or laminated/
Pages restaurées et/ou pelliculées
- Pages discoloured, stained or foxed/
Pages décolorées, tachetées ou piquées
- Pages detached/
Pages détachées
- Showthrough/
Transparence
- Quality of print varies/
Qualité inégale de l'impression
- Includes supplementary material/
Comprend du matériel supplémentaire
- Only edition available/
Seule édition disponible
- Pages wholly or partially obscured by errata slips, tissues, etc., have been refilmed to ensure the best possible image/
Les pages totalement ou partiellement obscurcies par un feuillet d'errata, une pelure, etc., ont été filmées à nouveau de façon à obtenir la meilleure image possible.

This item is filmed at the reduction ratio checked below/
Ce document est filmé au taux de réduction indiqué ci-dessous.

10X	12X	14X	16X	18X	20X	22X	24X	26X	28X	30X	32X
<input type="checkbox"/>	<input type="checkbox"/>	<input type="checkbox"/>	<input type="checkbox"/>	<input type="checkbox"/>	<input type="checkbox"/>	<input type="checkbox"/>	<input type="checkbox"/>	<input checked="" type="checkbox"/>	<input type="checkbox"/>	<input type="checkbox"/>	<input type="checkbox"/>

The copy filmed here has been reproduced thanks to the generosity of:

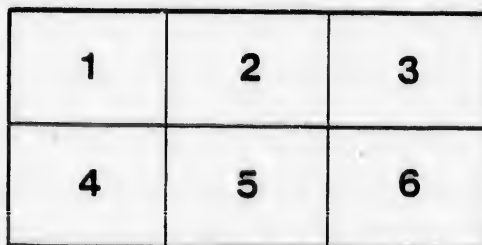
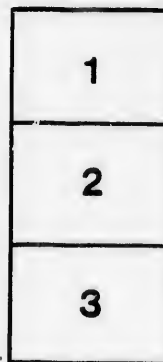
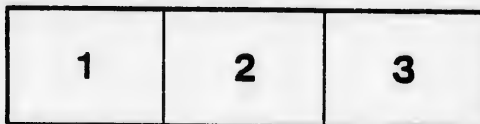
Manuscript Division
Public Archives of Canada

The images appearing here are the best quality possible considering the condition and legibility of the original copy and in keeping with the filming contract specifications.

Original copies in printed paper covers are filmed beginning with the front cover and ending on the last page with a printed or illustrated impression, or the back cover when appropriate. All other original copies are filmed beginning on the first page with a printed or illustrated impression, and ending on the last page with a printed or illustrated impression.

The last recorded frame on each microfiche shall contain the symbol \rightarrow (meaning "CONTINUED"), or the symbol ∇ (meaning "END"), whichever applies.

Maps, plates, charts, etc., may be filmed at different reduction ratios. Those too large to be entirely included in one exposure are filmed beginning in the upper left hand corner, left to right and top to bottom, as many frames as required. The following diagrams illustrate the method:



L'exemplaire filmé fut reproduit grâce à la générosité de:

Division des manuscrits
Archives publiques du Canada

Les images suivantes ont été reproduites avec le plus grand soin, compte tenu de la condition et de la netteté de l'exemplaire filmé, et en conformité avec les conditions du contrat de filmage.

Les exemplaires originaux dont la couverture en papier est imprimée sont filmés en commençant par le premier plat et en terminant soit par la dernière page qui comporte une empreinte d'impression ou d'illustration, soit par le second plat, selon le cas. Tous les autres exemplaires originaux sont filmés en commençant par la première page qui comporte une empreinte d'impression ou d'illustration et en terminant par la dernière page qui comporte une telle empreinte.

Un des symboles suivants apparaîtra sur la dernière image de chaque microfiche, selon le cas: le symbole \rightarrow signifie "A SUIVRE", le symbole ∇ signifie "FIN".

Les cartes, planches, tableaux, etc., peuvent être filmés à des taux de réduction différents. Lorsque le document est trop grand pour être reproduit en un seul cliché, il est filmé à partir de l'angle supérieur gauche, de gauche à droite, et de haut en bas, en prenant le nombre d'images nécessaire. Les diagrammes suivants illustrent la méthode.

*Wm. C. ...
Thos. W. ...*

3514

PROCLAMATION



COUNTIES OF ESSEX ELECTORAL DIVISIONS

**Public Notice is hereby given to
Essex and Kent,**

ELECTORAL DIVISIONS

That in obedience to Her Majesty's Writ, to me directed, I require the presence of the said Electors in front of the Court House, No. 19, Bedford street, in the Town of London, on the West side of Bedford street, in the Town of London, on the

AMATION!



**OF ESSEX AND KENT,
DIVISION, WESTERN:
*To Wit.***

given to the Electors of the Counties of

DIVISION OF WESTERN,

to me directed, and bearing date the Fifteenth day of August inst.
in front of the Old Grammar School House, situate on Lot Number
the Town of SANDWICH, in the said County of Essex,

I require the presence of the said Electors in front of the
nine on the West side of Bedford street, in the Town of

ON TUESDAY

The 2d day of SEPTEMBER

At twelve o'clock noon, for the purpose of electing a person
Province; and that in case a Poll be demanded and all
opened on the **ELEVENTH** day of the month of **SEPTEMBER**

COUNTY OF

Township of Anderdon, at the Town Hall.
Town of Amherstburg, at the Town Hall.
Township of Colchester, at the Town Hall.
Township of Rochester, at the School House in the se-
cond concession.
Township of Gosfield, at the Town Hall, Kingsville.
Township of Maidstone, at the house of Michael McAuliffe, Lot No. 16, Middle Road.
Township of Mersea, at the Town Hall, Leamington.
Township of Malden, at the Town Hall.

COUNTY OF

Town of Chatham—

Chrysler's Ward, at the Central School House.
Ebert's Ward, at the Town Hall.
Northwood's Ward, at the School House, Chatham North.

Township of Chatham, at the School House in Louisville.

Township of Camden, at the Town Hall.
Township of Dover East and West, at the School House, Pain Court.

Of which every person is hereby required to take Notice and to

Given under my hand, at the Town of Sandwich, in the
August, in the year of our Lord One Thousand Eight Hundred

(Record Job Print, Windsor.)

...to the directed and bearing date the Twentieth day of August last
...s in front of the Old Grammar School House, situate on Lot Number
...n the Town of SANDWICH, in the said County of Essex,

TUESDAY, 10th of September Next,

...electing a person to represent them in the Legislative Council of this
...anded and allowed in the manner by law prescribed, such Poll will be
...month of SEPTEMBER next, at the following places, namely:

COUNTY OF ESSEX.

- Township of Sandwich East, at the Town Hall.
- Township of Sandwich West, at the Town Hall.
- Town of Sandwich, at the Town Hall.
- Township of Tilbury West, at the Town Hall.
- Town of Windsor—
 - First Ward—At the Brick School House.
 - Second Ward—At the Town Hall.
 - Third Ward—At the house of John McCrae.

COUNTY OF KENT.

- Township of Howard, at the Town Hall, Ridgetown.
- Township of Harwich, at the School House, Blenheim.
- Township of Orford, at the School House, Kilmarnock.
- Township of Raleigh, at the School House near Stephen White's.
- Township of Romney, at Renwick's School House.
- Township of Tilbury East, at the Town Hall.
- Township of Zone, at the School House, Bothwell.

...e Notice and to govern himself accordingly.

...sandwich, in the County of Essex, this Twentieth day of the month of
...usand Eight Hundred and Sixty-two.

JOHN McEWAN,
Returning Officer.

