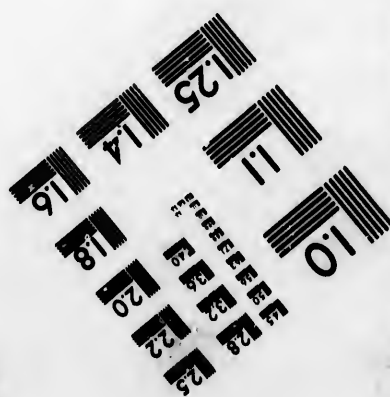
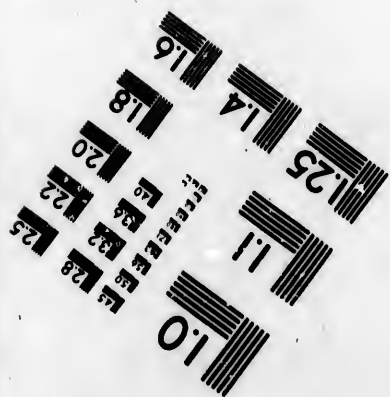
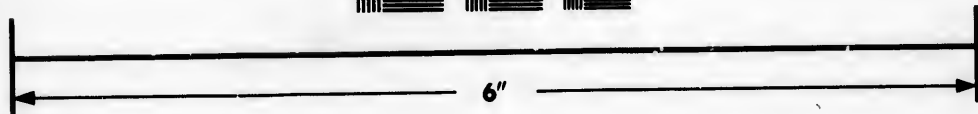
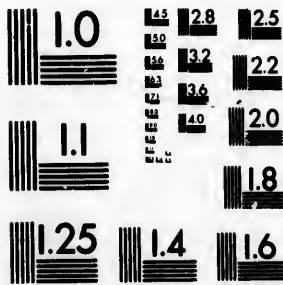


**IMAGE EVALUATION
TEST TARGET (MT-3)**



**Photographic
Sciences
Corporation**

23 WEST MAIN STREET
WEBSTER, N.Y. 14580
(716) 872-4503

28 2.5
22
2

**CIHM/ICMH
Microfiche
Series.**

**CIHM/ICMH
Collection de
microfiches.**



Canadian Institute for Historical Microreproductions / Institut canadien de microreproductions historiques

01

© 1983

Technical and Bibliographic Notes/Notes techniques et bibliographiques

The Institute has attempted to obtain the best original copy available for filming. Features of this copy which may be bibliographically unique, which may alter any of the images in the reproduction, or which may significantly change the usual method of filming, are checked below.

L'Institut a microfilmé le meilleur exemplaire qu'il lui a été possible de se procurer. Les détails de cet exemplaire qui sont peut-être uniques du point de vue bibliographique, qui peuvent modifier une image reproduite, ou qui peuvent exiger une modification dans la méthode normale de filmage sont indiqués ci-dessous.

- Coloured covers/
Couverture de couleur
- Covers damaged/
Couverture endommagée
- Covers restored and/or laminated/
Couverture restaurée et/ou pelliculée
- Cover title missing/
Le titre de couverture manque
- Coloured maps/
Cartes géographiques en couleur
- Coloured ink (i.e. other than blue or black)/
Encre de couleur (i.e. autre que bleue ou noire)
- Coloured plates and/or illustrations/
Planches et/ou illustrations en couleur
- Bound with other material/
Relié avec d'autres documents
- Tight binding may cause shadows or distortion
along interior margin/
La reliure serrée peut causer de l'ombre ou de la
distortion le long de la marge intérieure
- Blank leaves added during restoration may
appear within the text. Whenever possible, these
have been omitted from filming/
Il se peut que certaines pages blanches ajoutées
lors d'une restauration apparaissent dans le texte,
mais, lorsque cela était possible, ces pages n'ont
pas été filmées.
- Additional comments:/
Commentaires supplémentaires:

- Coloured pages/
Pages de couleur
- Pages damaged/
Pages endommagées
- Pages restored and/or laminated/
Pages restaurées et/ou pelliculées
- Pages discoloured, stained or foxed/
Pages décolorées, tachetées ou piquées
- Pages detached/
Pages détachées
- Showthrough/
Transparence
- Quality of print varies/
Qualité Inégale de l'Impression
- Includes supplementary material/
Comprend du matériel supplémentaire
- Only edition available/
Seule édition disponible
- Pages wholly or partially obscured by errata
slips, tissues, etc., have been refilmed to
ensure the best possible image/
Les pages totalement ou partiellement
obscurcies par un feuillet d'errata, une pelure,
etc., ont été filmées à nouveau de façon à
obtenir la meilleure image possible.

This item is filmed at the reduction ratio checked below/
Ce document est filmé au taux de réduction indiqué ci-dessous.

10X	14X	18X	22X	26X	30X
<input type="checkbox"/>	<input type="checkbox"/>	<input type="checkbox"/>	<input type="checkbox"/>	<input checked="" type="checkbox"/>	<input type="checkbox"/>
12X	16X	20X	24X	28X	32X

The copy filmed here has been reproduced thanks to the generosity of:

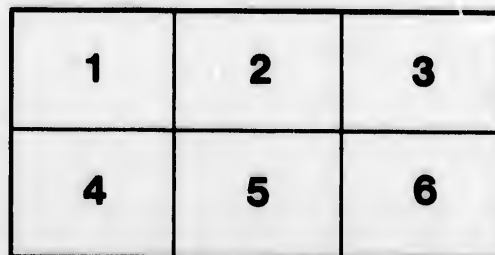
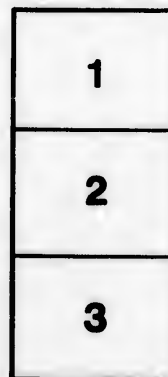
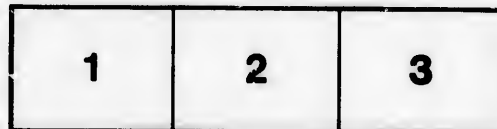
Library of Congress
Photoduplication Service

The images appearing here are the best quality possible considering the condition and legibility of the original copy and in keeping with the filming contract specifications.

Original copies in printed paper covers are filmed beginning with the front cover and ending on the last page with a printed or illustrated impression, or the back cover when appropriate. All other original copies are filmed beginning on the first page with a printed or illustrated impression, and ending on the last page with a printed or illustrated impression.

The last recorded frame on each microfiche shall contain the symbol \rightarrow (meaning "CONTINUED"), or the symbol ∇ (meaning "END"), whichever applies.

Maps, plates, charts, etc., may be filmed at different reduction ratios. Those too large to be entirely included in one exposure are filmed beginning in the upper left hand corner, left to right and top to bottom, as many frames as required. The following diagrams illustrate the method:



L'exemplaire filmé fut reproduit grâce à la générosité de:

Library of Congress
Photoduplication Service

Les images suivantes ont été reproduites avec le plus grand soin, compte tenu de la condition et de la netteté de l'exemplaire filmé, et en conformité avec les conditions du contrat de filmage.

Les exemplaires originaux dont la couverture en papier est imprimée sont filmés en commençant par le premier plat et en terminant soit par la dernière page qui comporte une empreinte d'impression ou d'illustration, soit par le second plat, selon le cas. Tous les autres exemplaires originaux sont filmés en commençant par la première page qui comporte une empreinte d'impression ou d'illustration et en terminant par la dernière page qui comporte une telle empreinte.

Un des symboles suivants apparaîtra sur la dernière image de chaque microfiche, selon le cas: le symbole \rightarrow signifie "A SUIVRE", le symbole ∇ signifie "FIN".

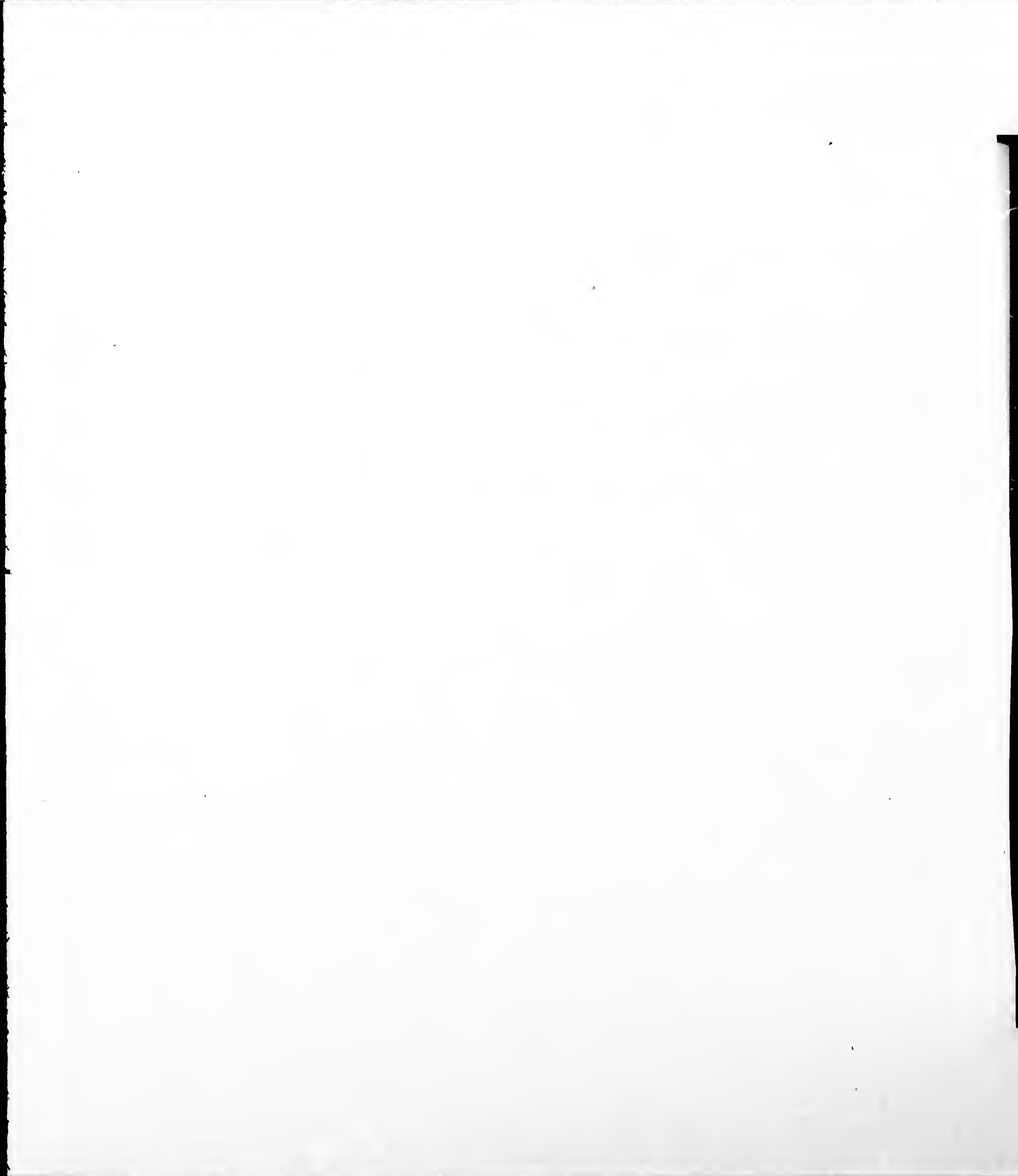
Les cartes, planches, tableaux, etc., peuvent être filmés à des taux de réduction différents. Lorsque le document est trop grand pour être reproduit en un seul cliché, il est filmé à partir de l'angle supérieur gauche, de gauche à droite, et de haut en bas, en prenant le nombre d'images nécessaire. Les diagrammes suivants illustrent la méthode.

ails
du
difier
ne
age

rata
o

elure,
à

32X



ARTICLE VI.—*A Partial Bibliography of the Phalanginæ of North America.* By CLARENCE M. WEED, M. Sc.

It is believed that there are included below most of the references to this group in our American literature. I have placed an interrogation point after the genus of several species of *Phalangium* of which I have seen no specimens, but which probably do not belong to that genus as now restricted.

GENERAL ARTICLES.

1821. SAY, THOMAS. An account of Arachnides of the United States. Jour. Phil. Acad. Nat. Sci., Vol. II., (*Phalanginæ*, pp. 65-68). Complete Writings, Vol. II., pp. 13-15.

The first descriptive paper treating of the group. Four species of *Phalangium* described; viz., *dorsatum*, *vittatum*, *nigrum*, and *grandis*.

1808. WOOD, HORATIO C., JR., M. D. On the Phalangæ of the United States of America. Communications of the Essex Institute, Vol. VI., pp. 10-40.

An elaborate paper on the family as a whole. Anatomy and habits discussed. 15 species of *Phalanginæ* described under genus *Phalangium*, 11 being new. Fair wood-cuts illustrate most of the species.

1885. UNDERWOOD, LUCIEN M., Ph.D. A Preliminary List of the Arthrogastra of North America (excluding Mexico). Canadian Entomologist, Vol. XVII. (*Phalanginæ*, pp. 167-169).

An enumeration of the described species with bibliographical references.

1887. WEED, CLARENCE M. The Genera of North American Phalanginæ. American Naturalist, Vol. XXI., p. 985 (October, 1887).

Attention is called to the proper generic position of several species. Method of extruding the genital organs of *Phalanginæ* described.

1889. WEED, CLARENCE M. A Descriptive Catalogue of the Phalanginae of Illinois. Bulletin Illinois State Laboratory of Natural History, Vol. III., Article V., pp. 79-97.

Extended descriptions of ten species, two being new. Notes on distribution, life history, and habits.

REFERENCES TO SPECIES.

1. *LIOBUNUM DORSATUM*, (Say).

Phalangium dorsatum. Say, Jour. Phil. Acad. Nat. Sci., Vol. II., p. 66 (1821). Complete Writings, Vol. II., p. 13.

Original descriptions from specimens in the cabinet of the Academy. "Inhabits the United States."

Phalangium dorsatum, Say. Wood, Commun. Essex Institute, Vol. VI., pp. 18-19, 21, 39, figures 1a-1c. (1868).

Extended descriptions and measurements of both sexes. Collected in N. Y., D. C., and Penn. An out-door species. Supposed young are whitish. Compared with *P. vittatum*, of which it is supposed to be the northern representative.

Phalangium dorsatum, Say. Packard, Guide to the Study of Insects, pp. 656-657, fig. 632 (1869).

Mention of its distribution. Common at Salem, Mass.

Phalangium dorsatum, Say. Gratacap, American Naturalist, Vol. XVI., p. 120.

Experiments on influence of oxygen on harvest-men. Specimens placed in the gas were somewhat excited, and lived twenty-four hours.

Phalangium dorsatum. Kingsley, Standard Natural History, Vol. II., p. 122 (1884).

Mention.

Phalangium dorsatum, Say. Underwood, Canadian Entomologist, Vol. XVII., p. 168 (1885).

Bibliographical references.

Liobunum dorsatum, (Say). Weed, American Naturalist, Vol. XXI., p. 935 (October, 1887).

Referred from *Phalangium* of previous authors to *Liobunum* of C. Koch, as defined by Simon.

Gift

Author

7 Ja '05

Liobunum dorsatum, (Say). Weed, Bull. Ill. St. Lab. Nat. Hist., Vol. III., pp. 83-85 (1889).

Elaborate description and measurements. Taken in northern and central Illinois and Michigan. Developed largely in fields and woods, and migrates to houses and barns. Commonest species in northern Illinois. Compared with *L. vittatum*, which is considered its southern representative.

2. *LIOBUNUM VITTATUM*, (Say).

Phalangium vittatum. Say, Jour. Phil. Acad. Nat. Sci., Vol. II., p. 65 (1821). Complete Writings Vol. II., p. 13.

Original description from specimens in the cabinet of the Academy. "Inhabits the Southern States."

Phalangium vittatum, Say. Wood, Commun. Essex Institute, Vol. VI., pp. 20-21, 39, figs. 2a-2d. (1868).

Extended description and measurements. Taken in Texas and Nebraska. Compared with *P. dorsatum*, which is supposed to be its northern representative.

Phalangium vittatum, Say. Underwood, Canadian Entomologist, Vol. XVII., p. 168 (1885).

Bibliographical references.

Liobunum vittatum, (Say). Weed, American Naturalist, Vol. XXI., p. 935 (October, 1887).

Referred from *Phalangium* of previous authors to *Liobunum* of C. Koch, as defined by Simon.

Liobunum vittatum, (Say). Weed, Bull. Ill. St. Lab. Nat. Hist., Vol. III., pp. 85-87. (1889).

Elaborate description and measurements. Common in southern Illinois where it frequents rocky ledges. Taken also in Kentucky. Compared with *L. dorsatum*, which it closely resembles, and of which it is supposed to be the southern representative.

3. *LIOBUNUM NIGROPALPI*, (Wood).

Phalangium nigropalpi. Wood, Commun. Essex Institute, Vol. VI., pp. 22-23, 39, figs. 3a-3c. (1868).

Original description from specimens taken in woods in Huntingdon Co., Penn. Males six times as numerous as females.

Phalangium nigropalpi, Wood. Underwood, Canadian Entomologist, Vol. XVII., p. 168 (1885).

Bibliographical references.

Liobunum nigropalpi, (Wood). Weed, American Naturalist, Vol. XXI., p. 935 (October, 1887).

Referred from *Phalangium* of previous authors to *Liobunum* of C. Koch.

Liobunum nigropalpi, (Wood). Weed, Bull. Ill. St. Lab. Nat. Hist., Vol. III., pp. 87-88 (1889).

Elaborate description and measurements. Taken in southern Illinois about rocky ledges. Males much more numerous than females. Remarkable for length of legs.

4. *LIOBUNUM VERRUCOSUM*, (Wood).

Phalangium verrucosum. Wood, Commun. Essex Institute, Vol. VI., pp. 29-30, 40 (1868).

Original description of some males of unknown locality in the Essex Institute Collection.

Phalangium verrucosum, Wood. Underwood, Canadian Entomologist, Vol. XVII., p. 168 (1885).

Bibliographical reference.

Liobunum verrucosum, (Wood). Weed, American Naturalist, Vol. XXI., p. 935 (October, 1887).

Referred from *Phalangium* of previous authors to *Liobunum* of C. Koch.

Liobunum verrucosum, (Wood). Weed, Bull. Ill. St. Lab. Nat. Hist., Vol. III., p. 88-89 (1889).

Extended description of male from specimens collected in Champaign Co., Ill.

5. *LIOBUNUM ELEGANS*, Weed.

Liobunum elegans. Weed, Bull. Ill. St. Lab. Nat. Hist., Vol. III., p. 89 (1889).

Original description from males taken in Champaign Co., Ill.

6. *LIOBUNUM POLITUS*, Weed.

Liobunum politus. Weed, Bull. Ill. St. Lab. Nat. Hist., Vol. III., pp. 89-90 (1889).

Original description from males collected at Champaign, Ill.

7. *LIOBUNUM (?) CALCAR*, (Wood).

Phalangium calcar. Wood, Commun. Essex Institute, Vol. VI., pp. 26-27, 30, figs. 6a-6b. (1868).

Original description of male collected in mountains of southwestern Virginia. Two females that are conjectured to belong to same species also described.

Phalangium calcar, Wood. Underwood, Canadian Entomologist, Vol. XVII., p. 168 (1885).

Bibliographical reference.

Liobunum (?) *calcar*, (Wood). Weed, American Naturalist, Vol. XXI., p. 935 (October, 1887).

Taken from *Phalangium* of previous authors and provisionally referred to *Liobunum*, although the palpal spur renders its generic position doubtful.

Liobunum (?) *calcar*, (Wood). Weed, Bull. Ill. St. Lab. Nat. Hist., Vol. III., pp. 90-91 (1889).

Extended description of males collected in Champaign Co., Ill. Provisionally retained in *Liobunum*.

8. *LIOBUNUM* (?) *FORMOSUM*, (Wood).

Phalangium formosum. Wood, Commun. Essex Institute, Vol. VI., pp. 30, 40 (1868).

Original description of females collected in the District of Columbia.

Phalangium formosum, Wood. Underwood, Canadian Entomologist, Vol. XVII., p. 168.

Bibliographical reference.

Liobunum (?) *formosum*, (Wood). Weed, American Naturalist, Vol. XXI., p. 935 (October, 1887).

Taken from *Phalangium* of previous authors and provisionally referred to *Liobunum*, although on account of palpal angle it does not strictly belong there.

Liobunum (?) *formosum*, (Wood). Weed, Bull. Ill. St. Lab. Nat. Hist., Vol. III., pp. 91-92 (1889).

Extended description of both sexes. Unlike other species, it hibernates as an adult. Provisionally retained in *Liobunum*.

9. *LIOBUNUM* (?) *BICOLOR*, (Wood).

Phalangium bicolor. Wood, Commun. Essex Institute, Vol. VI., pp. 28, 39, fig. (1868).

Original description from two females taken in Delaware county, Penn.

Phalangium bicolor, Wood. Underwood, Canadian Entomologist, Vol. XVII., p. 168 (1885).

Bibliographical reference.

Liobunum (?) *bicolor*, (Wood). Weed, American Naturalist, Vol. XXI., p. 935 (October, 1887).

In absence of specimens, it is conjectured that the species may belong to *Liobunum* rather than *Phalangium*.

10. LIOBUNUM (?) VENTRICOSUM, (Wood).

Phalangium ventricosum. Wood, Commun. Essex Institute, Vol. VI., pp. 32-33, 39, fig. 7 (1868).

Original description of female and supposed male. Taken in Penn. and Neb.

Phalangium ventricosum, Wood. Packard, Guide to the Study of Insects, p. 657, fig. 633 (1869).

Mention. Said to be widely distributed in United States.

Phalangium ventricosum, Wood. Underwood, Canadian Entomologist, Vol. XVII., p. 169 (1885).

Bibliographical reference.

Liobunum (?) ventricosum, (Wood). Weed, American Naturalist, Vol. XXI., p. 935 (October, 1887).

In absence of specimens, it is conjectured that this species belongs to *Liobunum* rather than *Phalangium*.

11. PHALANGIUM CINEREUM, Wood.

Phalangium cinereum. Wood, Commun. Essex Institute, Vol. VI., pp. 25-26, 39 (1868).

Original description from specimens taken in northern New York.

Phalangium cinereum, Wood. Underwood, Canadian Entomologist, Vol. XVII., p. 168 (1885).

Bibliographical reference.

Phalangium cinereum, Wood. Weed, American Naturalist, Vol. XXI., p. 935 (October, 1887).

Said to belong to the genus *Phalangium*, as restricted by Simon.

Phalangium cinereum, Wood. Weed, Bull. Ill. St. Lab. Nat. Hist., Vol. III., pp. 93-94. (1880).

Extended descriptions of both sexes. Taken in Champaign Co., Ill., and at Lansing, Mich.

12. PHALANGIUM (?) MACULOSUM, Wood.

Phalangium maculosum. Wood, Commun. Essex Institute, Vol. VI., pp. 31-32, 40, fig. (1868).

Original description of both sexes from specimens collected in Penn. and W. Va.

Phalangium maculosum, Wood. Underwood, Canadian Entomologist, Vol. XVII., p. 168 (1885).

Bibliographical reference.

13. PHALANGIUM (?) FAVOSUM, Wood.
Phalangium favosum. Wood, Commun. Essex Institute, Vol. VI., pp. 28-29, 40 (1868).
Original description from a single female collected in Nebraska.
Phalangium favosum, Wood. Underwood, Canadian Entomologist, Vol. XVII., p. 168 (1885).
Bibliographical reference.
14. PHALANGIUM NIGRUM, Say.
Phalangium nigrum. Say, Jour. Phil. Acad. Nat. Sci., Vol. II., pp. 66-67 (1821). Complete Writings, Vol. II., p. 14.
Original description. "Not uncommon in the Carolinas and Georgia."
Phalangium nigrum, Say. Wood, Commun. Essex Institute, Vol. VI., pp. 34-35, 40 (1868).
Form from Texas and Nebraska, supposed to be same as Say's species described. Say's description also quoted.
Phalangium nigrum, Say. Underwood, Canadian Entomologist, Vol. XVII., p. 168 (1885).
Bibliographical references.
15. PHALANGIUM (?) GRANDE, Say.
Phalangium grande. Say, Jour. Phil. Acad. Nat. Sci., Vol. II., pp. 67-68 (1821). Complete Writings, Vol. II., p. 14.
Original description. "Inhabits the Southern States."
Phalangium grande, Say. Wood, Commun. Essex Institute, Vol. VI., pp. 34, 40 (1868).
Simple quotation of Say's description. Had seen no specimens.
Phalangium grande, Say. Underwood, Canadian Entomologist, Vol. XVII., p. 168 (1885).
Bibliographical references.
16. PHALANGIUM (?) EXILIPES, Wood.
Phalangium exilipes. Wood, Commun. Essex Institute, Vol. VI., pp. 23-24, 39 (1868).
Original description from three specimens collected in California and Nevada.
Phalangium exilipes, Wood. Underwood, Canadian Entomologist, Vol. XVII., p. 168 (1885).
Bibliographical reference.

17. *OLIGOLOPHUS PICTUS*, (Wood).

Phalangium pictum, Wood, Commun. Essex Institute, Vol. VI., pp. 30-31, 40.

Original description from a single female, taken near Salem, Mass.

Phalangium pictum, Wood. Underwood, Canadian Entomologist, Vol. XVII., p. 189 (1885).

Bibliographical reference.

Oligolophus pictus, (Wood). Weed, American Naturalist, Vol. XXI., p. 935 (October, 1887).

Referred from *Phalangium* of previous authors to *Oligolophus*.

Oligolophus pictus, (Wood). Weed, Bull. Ill. St. Lab. Nat. Hist., Vol. III., pp. 95-97 (1889).

Extended descriptions of both sexes, collected in Champaign Co., Ill.

l History.

sex Institute, Vol.

n near Salem, Mass.

, Canadian Ento-

erican Naturalist,

o *Oligolophus*.

ull. Ill. St. Lab.

Champaign Co., Ill.



