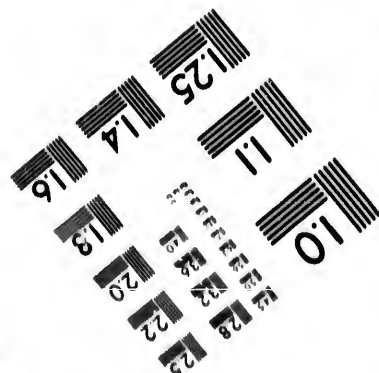
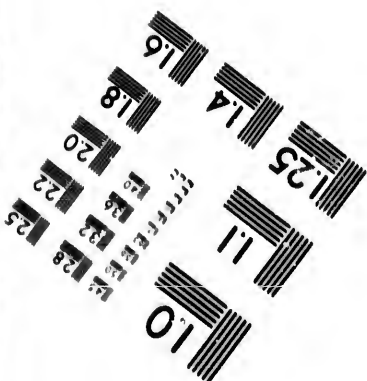
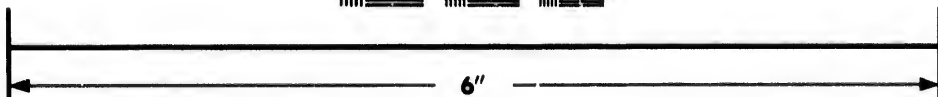
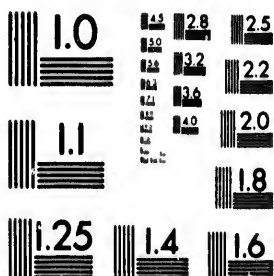


**IMAGE EVALUATION  
TEST TARGET (MT-3)**



**Photographic  
Sciences  
Corporation**

23 WEST MAIN STREET  
WEBSTER, N.Y. 14580  
(716) 872-4503

15 28 25  
16 32 22  
18 20

**CIHM/ICMH  
Microfiche  
Series.**

**CIHM/ICMH  
Collection de  
microfiches.**



Canadian Institute for Historical Microreproductions / Institut canadien de microreproductions historiques

10  
01

**© 1987**

Technical and Bibliographic Notes/Notes techniques et bibliographiques

The Institute has attempted to obtain the best original copy available for filming. Features of this copy which may be bibliographically unique, which may alter any of the images in the reproduction, or which may significantly change the usual method of filming, are checked below.

L'Institut a microfilmé le meilleur exemplaire qu'il lui a été possible de se procurer. Les détails de cet exemplaire qui sont peut-être uniques du point de vue bibliographique, qui peuvent modifier une image reproduite, ou qui peuvent exiger une modification dans la méthode normale de filmage sont indiqués ci-dessous.

- Coloured covers/  
Couverture de couleur
- Covers damaged/  
Couverture endommagée
- Covers restored and/or laminated/  
Couverture restaurée et/ou pelliculée
- Cover title missing/  
Le titre de couverture manque
- Coloured maps/  
Cartes géographiques en couleur
- Coloured ink (i.e. other than blue or black)/  
Encre de couleur (i.e. autre que bleue ou noire)
- Coloured plates and/or illustrations/  
Planches et/ou illustrations en couleur
- Bound with other material/  
Relié avec d'autres documents
- Tight binding may cause shadows or distortion  
along interior margin/  
La reliure serrée peut causer de l'ombre ou de la  
distorsion le long de la marge intérieure
- Blank leaves added during restoration may  
appear within the text. Whenever possible, these  
have been omitted from filming/  
Il se peut que certaines pages blanches ajoutées  
lors d'une restauration apparaissent dans le texte,  
mais, lorsque cela était possible, ces pages n'ont  
pas été filmées.
- Additional comments:/  
Commentaires supplémentaires:

- Coloured pages/  
Pages de couleur
- Pages damaged/  
Pages endommagées
- Pages restored and/or laminated/  
Pages restaurées et/ou pelliculées
- Pages discoloured, stained or foxed/  
Pages décolorées, tachetées ou piquées
- Pages detached/  
Pages détachées
- Showthrough/  
Transparence
- Quality of print varies/  
Qualité inégale de l'impression
- Includes supplementary material/  
Comprend du matériel supplémentaire
- Only edition available/  
Seule édition disponible
- Pages wholly or partially obscured by errata  
slips, tissues, etc., have been refilmed to  
ensure the best possible image/  
Les pages totalement ou partiellement  
obscurcies par un feuillet d'errata, une pelure,  
etc., ont été filmées à nouveau de façon à  
obtenir la meilleure image possible.

This item is filmed at the reduction ratio checked below/  
Ce document est filmé au taux de réduction indiqué ci-dessous.

10X	14X	18X	22X	26X	30X
<input type="checkbox"/>	<input type="checkbox"/>	<input type="checkbox"/>	<input checked="" type="checkbox"/>	<input type="checkbox"/>	<input type="checkbox"/>
12X	16X	20X	24X	28X	32X

The copy filmed here has been reproduced thanks to the generosity of:

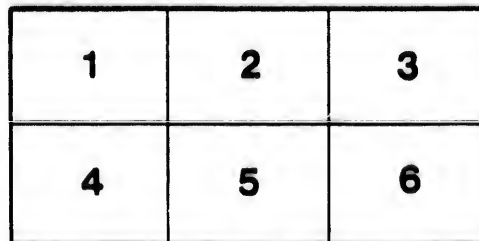
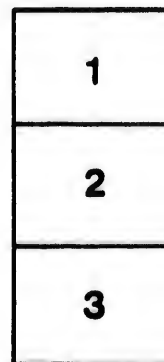
D. B. Weldon Library  
University of Western Ontario  
(Regional History Room)

The images appearing here are the best quality possible considering the condition and legibility of the original copy and in keeping with the filming contract specifications.

Original copies in printed paper covers are filmed beginning with the front cover and ending on the last page with a printed or illustrated impression, or the back cover when appropriate. All other original copies are filmed beginning on the first page with a printed or illustrated impression, and ending on the last page with a printed or illustrated impression.

The last recorded frame on each microfiche shall contain the symbol  $\rightarrow$  (meaning "CONTINUED"), or the symbol  $\nabla$  (meaning "END"), whichever applies.

Maps, plates, charts, etc., may be filmed at different reduction ratios. Those too large to be entirely included in one exposure are filmed beginning in the upper left hand corner, left to right and top to bottom, as many frames as required. The following diagrams illustrate the method:



L'exemplaire filmé fut reproduit grâce à la générosité de:

D. B. Weldon Library  
University of Western Ontario  
(Regional History Room)

Les images suivantes ont été reproduites avec le plus grand soin, compte tenu de la condition et de la netteté de l'exemplaire filmé, et en conformité avec les conditions du contrat de filmage.

Les exemplaires originaux dont la couverture en papier est imprimée sont filmés en commençant par le premier plat et en terminant soit par la dernière page qui comporte une empreinte d'impression ou d'illustration, soit par le second plat, selon le cas. Tous les autres exemplaires originaux sont filmés en commençant par la première page qui comporte une empreinte d'impression ou d'illustration et en terminant par la dernière page qui comporte une telle empreinte.

Un des symboles suivants apparaît sur la dernière image de chaque microfiche, selon le cas: le symbole  $\rightarrow$  signifie "A SUIVRE", le symbole  $\nabla$  signifie "FIN".

Les cartes, planches, tableaux, etc., peuvent être filmés à des taux de réduction différents. Lorsque le document est trop grand pour être reproduit en un seul cliché, il est filmé à partir de l'angle supérieur gauche, de gauche à droite, et de haut en bas, en prenant le nombre d'images nécessaire. Les diagrammes suivants illustrent la méthode.

Voters List  
OF THE Township of  
Biddulph

FOR THE YEAR 1898.

The Sheriff shall, immediately upon the receipt of his copies, cause one of them to be posted up in a conspicuous place in the Court House. The Clerk of the Peace upon the receipt of his copies shall cause one of them to be posted up in a conspicuous place in his office. Every Public or Separate School Head, Master or Mistress shall in like manner post up one of his or her copies on the door of his school house, and every Postmaster shall post up one of his copies in the postoffice.—Veterans' List Act, 1898, Chap. 3, Sec. 3.

1  
2  
3  
4

T  
fr  
S  
C  
S  
In

P

Jurors

# Voters' List, Township of Biddulph, 1898

## SCHEDULE OF POSTOFFICES

1—CLANDEBOYE      2—LUCAN      3—DENFIELD      4—MOORESVILLE  
 5—GRANTON      6—WHALEN      7—ELGINFIELD      8—CENTRALIA  
 9—PROSPECT HILL      10—SAINTSBURY

## ABBREVIATIONS

V I shall mean Village of Ireland. V G, Village of Granton. V A, Village of Awmick  
 N B, North Boundary. S B, South Boundary. N L R, North of the London Road.  
 S L R, South of the London Road. M st, Main street. K st, King street. Qn or Q  
 st, Queen street. Flan or F st, Flannigan st. Brad st, Bradley st. C S R, Centre  
 Side Road.

## POLLING SUB-DIVISION No. 1

To be composed of Con. 1, from South Boundary to lot 27, inclusive; Con. 2 and 3,  
 from S B to lot 25, inclusive; Con. 4 and 5, from S B to lot 26 inclusive; North and  
 South of the London Road, from Lot No. 1 to the Corporation of Lucan, and from the  
 Corporation of Lucan to Ryan's Corners; Lots 26, 27, 28, 29, 30, 31, 36, and 37, Con.  
 6; Lots 31, 32, 33, Con. 7, and all South of the Centre Sideroad in the Village of  
 Ireland.

## PART I—Persons entitled to vote at both Municipal Elections and elections to the Legislative Assembly.

Jurors	No. on Roll	NAME	No. of Lot	Con. or St.	Description of Voter	P. O.	Occupation
	321	Atkinson, James	29	5	oc, m f	2	farmer
	771	Benn, Hugh	pt 8	s l r	fs, m f	3	farmer
	770	Benn, Thomas	pt 8	s l r	fs, m f	2	farmer
j	769	Benn, Thomas	pt 8	s l r	f, m f	2	farmer
	773	Brabison, Robt sr	pt 11	s l r	f, m f	7	farmer
j	772	Brabison, Robt jr	pt 11	s l r	f, m f	2	farmer
j	323	Brownlee, William	36	5	f, m f	2	farmer
	777	Blake, William	pt 11	s l r	oc, mf	7	farmer
j	53	Carter, George	27	1	f, m f	1	farmer

## LIST OF VOTERS

Jurors	No. on Roll	NAME	No. of Lot	Con. or St.	Description of Voter	P. O.	Occupation
	767	Collison, Thomas	pt 11	s l r	fs, m f	7	farmer
	54	Carter, Gilbert J.	27	1	fs, m f	1	farmer
	55	Carter, Levi	27	1	fs, m f	1	farmer
	60	Clifford, Patrick	30	1	f, m f	1	farmer
j	123	Coursey, James	s half 32	2	f, m f	2	farmer
j	141	Coursey, John	37	2	f, m f	2	farmer
j	143	Coursey, Richard	n half 38	2	f, m f	2	farmer
	144	Coursey, John A.	n half 38	2	fs, m f	2	farmer
j	135	Coursey, Richard	n half 32	2	f, m f	2	farmer
	136	Coursey, Thos. Walter	n half 32	2	fs, m f	2	farmer
j	781	Cunningham, Wm.	pt 3 4 5	R 2, V 1	f, m f	1	farmer
j	210	Coursey, Thomas H.	37	3	f, m f	2	farmer
j	212	Coursey, Thomas	38, pt 38	3, 4	f, m f	2	farmer
	213	Coursey, C. H.	38	3	fs, m f	2	farmer
j	259	Clatterham, Samuel	w pt 27	4	f, m f	2	farmer
j	738	Collison, Martin	pt 10, s 1/2 31	n l r, 6	f, m f	7	farmer
j	764	Collison, Wm.	pt 9, 10	s l r	f, m f	7	farmer
	766	Collison, John T. F.	pt 11	s l r	fs, m f	7	farmer
j	761	Cooper, Joseph	34	1	f, m f	1	farmer
j	70	Cooper, Richard	34	1	f, m f	1	farmer
	137	Coursey, Richard	n half 32	3	fs, m f	2	farmer
j	729	Casey, John	pt 3	n l r	f, m f	2	farmer
	730	Casey, Thomas	pt 3	n l r	f, m f	2	farmer
j	736	Donnelly, James	pt 8 and 9	n l r	t, m f	2	farmer
j	325	Donnelly, James	n half 37, 38	5	f, m f	2	farmer
j	73	Daney, Tassel	36	1	f, m f	3	farmer
	322	Daley, Alexander	n half 35	5	oc, m f	2	farmer
j	58	Egan, Patrick	29	1	t, m f	1	farmer



## TOWNSHIP OF BIDDULPH

3

Jurors	No. on Roll	NAME	No. of Lot	Con. or St.	Description of Voter	O. P.	Occupation
	752	Ferguson, John A.	pt 2	s l r	t, m f	2	peddler
	779	Farrell, Patrick	pt 2	B 2, V I	f, m f	1	farmer
	68	Gibson, Michael	32	1	f, m f	1	farmer
j	316	Guilfoil, Thomas	n half 34	5	f, m f	2	farmer
j	317	Guilfoil, William	s half 34	5	f, m f	2	farmer
j	318	Guilfoil, Simon	35	5	f, m f	2	farmer
	320	Guilfoil, Malcolm	s half 35	5	fs, m f	2	farmer
j	324	Gleeson, Michael	n half 37	5	f, m f	2	farmer
j	782	Guilfoil, Edward	pt 7, pt 7	s l r, s l r	t, m f	2	farmer
j	372	Guilfoil, Stearn	37	6	t, m f	2	farmer
	733	Guilfoil, Christopher	pt 7	n l r	fs, m f	2	farmer
	734	Guilfoil, Oliver	pt 7	n l r	fs, m f	2	farmer
	56	Hodgins, John	26, o p	1	f, m f	1	farmer
	57	Hodgins, W. J.	28	1	fs, m f	1	farmer
j	72	Haskett, Benjamin	35	1	f, m f	2	farmer
j	74	Henry, Andrew	38, 37	1	f, m f	2	farmer
j	77	Henry, Alexander	n half 39	1	f, m f	2	farmer
j	271	Howard, John	35, n half 37	4	f, m f	2	farmer
	272	Howard, Casper	n half 37	4	fs, m f	2	farmer
j	124	Hodgins, Eli	33	2	f, m f	2	farmer
j	127	Hodgins, C. C.	s half 34, 34	2, 3	f, m f	2	farmer
j	132	Hodgins, Albert O.	35	2	f, m f	2	farmer
	139	Hodgins, John H.	36, 31	2	f, m f	2	farmer
j	191	Hodgins, John	25, pt 2, 3	3, n l r	f, m f	2	farmer
j	214	Hodgins, Ulrich	39	3	f, m f	2	farmer
j	128	Hodgins, John A.	s half 34	3	f, m f	2	farmer

## LIST OF VOTERS

Jurors	No. on Roll	NAME	No. of Lot	Con. or St.	Description of Voter	Age	Occupation
	129	Hodgins, Edward	34	3	oo, m f	2	farmer
j	192	Hodgins, Leopold	pt 1	n l r	f, m f	2	farmer
j	203	Hodgins, Christopher	ej 32, 33, n j 32	3, 2	f, m f	2	farmer
j	205	Hodgins, F. W., M. D.	33	3	f, m f	2	farmer
	191	Hodgins, John, J. P.	n half 34	3	f, m f	2	farmer
	309	Hamilton, Gustavus	26, s half 26	5, 4	f, m f	2	farmer
	310	Hamilton, George	26	5	f, m f	2	farmer
j	311	Hodgins, Ensley	27	5	f, m f	2	farmer
	313	Hodgins, George	28	5	f, m f	2	farmer
j	315	Hodgins, Walter G.	n pt 29	5	f, m f	2	farmer
	314	Hodgins, Irwin	28	5	fs, m f	2	farmer
j	208	Hodgins, Alfred	35	3	f, m f	2	farmer
j	413	Hogan, Martin	31, pt 31	7, 6	f, m f	2	farmer
j	728	Hodgins, James M.	pt 2, o p	n l r	f, m f	2	farmer
j	198	Hodgins, Thomas	36	2	oo, m f	2	farmer
j	206	Hodgins, A. G., M. D.	33	3	f, m f	2	farmer
	412	Hogan, John	31	7	fs, m f	2	farmer
j	731	Hall, Thomas	pt 4	n l r	oo, m f	2	farmer
j	369	Heenan, James	29	6	f, m f	2	farmer
	414	Hogan, Michael	31	7	fs, m f	2	farmer
	140	Hodgins, Walter J.	36	1	fs, m f	2	farmer
	265	Hodgins, Henry	n half 32	4	oo, m f	2	farmer
	274	Hodgins, Fred	35	4	oo, m f	2	farmer
o	275	Hodgins, Christopher	n half 32	4	oo, m f	2	farmer
j	63	Lumby, Thomas	s half 31	1	oo, m f	1	farmer
j	198	Langford, Benj	pt 30	3	f, m f	2	manf'r
j	253	Lewis, Jeremiah	n half 26	4	f, m f	2	farmer
j	266	Lewis, George	s half 32	4	f, m f	2	farmer
j	273	McRoberts, Robt.	pt 38	4	f, m f	2	farmer

TOWNSHIP OF BIDDULPH

Jurors	No. on Roll	NAME	No. of Lot	Con. or St.	Description of Voter	P. O.	Occupation
i	864	McLoughlin, Edward	pt 26	6	f, m f	2	farmer
	763	McIlhargy, Joseph	pt 7	s l r	fs, m f	2	farmer
	796	McWilliams, James	1	s l r	fs, m f	1	farmer
	797	McWilliams, John	1	s l r	fs, m f	1	student
	791	Morley, Thomas	21, 14	R 2, V I	oc, m f	1	laborer
	792	McMahon, John	pt 7, pt 8, pt 11	n l r	f, m f	2	farmer
	751	Meads, Melvin	pt 2	s l r	fs, m f	2	farmer
	791	McIlhargy, John	pt 11	n l r	f, m f	7	farmer
	762	McIlhargy, Patrick	w pt 7	s l r	f, m f	2	farmer
	744	McCormick, Stephen	pt 11	s l r	f, m f	7	merchant
j	778	McIlhargy, Joseph	1, 2, 5, 6	R 2, E F at, V I	oc, m f	1	farmer
	793	McWilliams, Andrew	1, 28, o p	s l r, 2	t, m f	1	farmer
	794	McWilliams, Alex.	1	s l r	fs, m f	1	farmer
	795	McWilliams, Wm.	1	s l r	fs, m f	1	farmer
	793	McMahon, Charles	pt 7	n l r	fs, m f	2	farmer
	368	Morkin, James	pt 28	6	fs, m f	2	farmer
	367	Morkin, Patrick	pt 28	6	fs, m f	2	farmer
	256	McCartv, David	pt 27	4	oc, m f	2	farmer
	369	Morkin, Thomas	pt 28	6	fs, m f	2	farmer
<i>Ed. McMartin Dunean - pt 29 - 5 - - L. m. f. 2</i>							
j	739	Noonan, Rev. Thomas	pt 10	n l r	oc, m f	7	clergyman
	415	Nangle, Patrick	32, pt 33	7	f, m f	2	farmer
	416	Nangle, Joseph	32	7	fs, m f	2	farmer
	417	Nangle, John	32	7	fs, m f	2	farmer
	61	Patton, Andrew	n half 31	1	oc, m f	1	farmer
	62	Patton, Albert	n half 31	1	oc, m f	1	laborer
	71	Patton, John	pt 26	1	oc, m f	1	farmer
j	776	Quigley, Patrick	pt 11, 15	s l r, 5	f, m f	7	farmer

## LIST OF VOTERS

Jurors	No. on Roll	NAME	No. of Lot	Con. on St.	Description of Voter	A. C.	Occupation
j	374	Ryan, John	36	6	f, m f	2	farmer
j	193	Rollins, Wm.	pt 30, pt 3, pt 4	3, s l r	t, m f	2	farmer
j	199	Ryan, Nathaniel A.	pt 31	3	f, m f	2	farmer
j	202	Ryan, Francis A.	n half 32	3	f, m f	2	farmer
j	267	Ryan, Caleb	33	4	f, m f	2	farmer
j	263	Ryan, George	34	4	f, m f	2	farmer
j	744	Ryan, George	n w pt 12	n l r	f, m f	7	farmer
j	745	Ryan, David	e pt 12, n $\frac{1}{2}$ 3	n l r, s b	f, m f	7	farmer
	746	Ryan, W. H., J. P.	e pt 12	n l r	f, m f	7	farmer
	194	Rollins, Wellington J.	pt 30	3	fs, m f	2	farmer
	195	Rollins, Victor	pt 30	3	fs, m f	2	farmer
	735	Ryder, Daniel	pt 8	n l r	f, m f	2	farmer
	749	Reid, William	pt 7	n l r	oc, m f	2	farmer
j	121	Scell, W. H.	n $\frac{1}{2}$ 31, 29, 30	1, 2	f, m f	2	farmer
j	78	Stephenson, James	pt 40	1	f, m f	3	farmer
j	145	Stanley, Henry	s half 38	2	f, m f	2	farmer
j	146	Stanley, Bernard W.	39	2	f, m f	2	farmer
	270	Sadleir, Francis	36	4	f, m f	2	farmer
j	269	Sadleir, Wellington	36	4	f, m f	2	farmer
	785	Simpson, Richard	10, 11	R 2, V I	f, m f	1	farmer
j	196	Stanley, Charles	pt 30	3	f, m f	2	merchant
	309	Steeper, Wm.	pt 3	s l r	oc, m f	2	farmer
j	370	Thompson, John	30	6	f, m f	2	farmer
	66	Thompson, William	32	1	fs, m f	1	farmer
j	65	Thompson, Hiram	32	1	t, m f	1	farmer
j	755	Turner, Elijah	pt 3	s l r	f, m f	2	farmer
	371	Thompson, Thomas	30	6	fs, m f	2	farmer

TOWNSHIP OF BIDDULPH

Jurors	No. on Roll	NAME	No. of Lot	Con. or St.	Description of Voter	P. O.	Occupation
		67 Thompson, Hiram E.	32	1	fs, m f	3	farmer
j	261	Whalen, James	n half 32	4	t, m f	2	farmer
j	787	Westle, James	12, 13, 29, 30	R 2, R 3, V I	f, m f	1	gentleman
	790	Westle, Richard	21	R 2, V I	f, m f	1	gentleman
	262	Whalen, Daniel	n half 32	4	fs, m f	2	farmer
	260	Whalen, James	n half 32	4	fs, m f	2	farmer
	<del>263</del>	<del>Whalen, Jeremiah</del>	<del>n half 32</del>	<del>4</del>	<del>fs, m f</del>	<del>2</del>	<del>farmer</del>

PART 2—Persons entitled to vote at Municipal Elections only

780'	Brown, Fred	pt 3	R 2, V I	f	2	shoemaker
768	Butler, Peter E.	pt 2, pt 3	s l r, n l r	f	2	farmer
773	Bice, Mrs. C.	8, 9	R 2, V I	f	1	widow
749	Burnett, James	pt 4, pt 3	s l r	f	2	farmer
757	Butler, Peter	pt 3	s l r	f	2	farmer
765	Collison, Mrs. C.	pt 10, pt 11	s l r	f	7	widow
373	Cain, John F.	37	6	f	2	farmer
326	Donnelly, James	s half 37	5	f	2	farmer
788	Friers, Margaret	19, 20, o p	R 2, V I	f	1	spinster
748	Fox, John	pt 7, pt 29	n l r, 5	f	2	banker
737	Fox, George	pt 8, 9	n l r	f	2	farmer
819	Guilfoil, Robert	s half 35	5	f	2	farmer
75	Henry, William	37	1	f	2	farmer
204	Hodgins, Mrs. Ann	33	3	f	2	widow
259	Hodgins, George	pt 27	4	f	2	farmer
923	Hodgins, George W.	pt 26	R 2, V I	f	1	farmer

## LIST OF VOTERS

Jurors	No. on Roll	NAME	No. of Lot	Con. or St.	Description of Voter	P. O.	Occupation
	126	Hodgins, Jane	33	2	f	2	widow
	133	Hodgins, Mrs. James	35	2	f	2	widow
	759	King, Mrs. Jane	pt 3	s l r	f	2	widow
	792	Lewis, Maria	22, 23, o p	R 2, V I	f	1	widow
	64	Lumby, Ashley	pt 31	1	f	1	farmer
	418	McGrath, Miss Ann.	pt 33	7	f	2	spinster
	750	Meads, Sarah A.	pt 2	s l r	f	2	widow
	59	McMahon, James	29	1	f	1	farmer
	365	Morkin, Mrs. Margaret	pt 28, n half 29	6, 8	f	2	widow
	761	Parker, Mary	pt 4	s l r	f	2	widow
	789	Patrick, William	18	R 2, V I	f	1	gentleman
	184	Park, John	pt 31	2	f	2	farmer
	76	Rosser, John W.	s half 30	1	f	3	farmer
	201	Ryan, Mrs. Catherine	pt 31	3	f	2	
	122	Soell, Robert	30	2	f	2	farmer
	753	Stanley, B.	pt 2	c l r	f	2	gentleman
	209	Stanley, James	36	3	f	2	farmer
	754	Stanley, Albert	pt 2	s l r	f	2	
	264	Thompson, Richard	n half 32	4	f	2	farmer
	768	Tennant, E.	pt 3	s l r	f	2	vet. surg'n
	758	Turner, Sarah	pt 3	s l r	f	2	
	254	Ward, John	pt 27	4	f	2	farmer
	255	Ward, William	pt 27	4	f	2	farmer

## TOWNSHIP OF BIDDULPH

9

Jurors	No. on Roll.	NAME	No. of Lot	Con. or St.	Description of Voter	O. P.	Occupation
--------	--------------	------	------------	-------------	----------------------	-------	------------

## PART 3—Persons entitled to vote at Elections to the Legislative Assembly only

	312	Boyce, William	27	5	m f	2	farmer
	740	Benn, Richard	pt 10	n l r	m f	7	farmer
	142	Cathcart, Wm.	37	2	m f	2	farmer
	258	Clatterham, Charles	pt 27	4	m f	2	farmer
	782	Cunningham, William	pt 3, 4, 5	R2, V I	m f	1	laborer
	783	Cunningham, Uriah	pt 3, 4	R2, V I	m f	1	laborer
	784	Cunningham, Albert	pt 3, 4, 5	R2, V I	m f	1	laborer
	200	Deacon, William H.	31	3	m f	2	farmer
	207	Deacon, Matthew	33	3	m f	2	farmer
	130	Guilfoyl, Christopher	a half 34	2	m f	2	farmer
	747	Gillillan, John	pt 12	n l r	m f	7	farmer
	211	Handford, Herbert	37	3	m f	2	laborer
	775	McCormick, Charles	pt 11	s l r	m f	2	merchant
	125	Pitt, Ernest	33	2	m f	2	farmer
	926	Ryan, Caleb	31	3	m f	2	farmer

## POLLING SUB-DIVISION No. 2

To be composed of Con. 1 from North Boundary to Lot 25, inclusive ; Cons. 2 and 3 from N. B. to lot 24, inclusive ; and all the Village of Ireland north of the C. S. R.

### PART I—Persons entitled to vote at both Municipal Elections and elections to the Legislative Assembly.

Jurors	No. on Roll	NAME	No. of Lot	Con. on St.	Description of Voter	Age	Occupation
j	177	Atkinson, James	s half 16	3	f, m f	4	farmer
	28	Aikens, Johnston	pt 15	1	t, m f	4	farmer
j	100	Atkinson, W. H.	n half 12	2	f, m f	4	farmer
j	101	Atkinson, Robert	s half 12	2	f, m f	4	farmer
j	105	Atkinson, Thomas	s half 14	2	f, m f	4	farmer
j	104	Atkinson, Richard	n half 14	2	f, m f	4	farmer
j	158	Atkinson, Marshall	s pt 5	3	t, m f	10	farmer
j	176	Atkinson, William	n half 16	3	f, m f	4	farmer
j	81	Atkinson, James	3	2	f, m f	8	farmer
j	153	Atkinson, W. R.	3	3	f, m f	8	farmer
j	159	Atkinson, James	s pt 5	3	f, m f	8	farmer
j	45	Barry, James	n half 21	1	f, m f	1	farmer
j	165	Blackwell, Richard	s half 10	3	f, m f	4	farmer
j	79	Blair, James	1	2	f, m f	8	farmer
	80	Blair, William	1	2	fs, m f	8	farmer
j	29	Bloomfield, John	pt 15	1	t, m f		4 merchant
j	37	Bloomfield, John	pt 16	1	f, m f	4	gentleman
	187	Colby, Robert	22	3	oc, m f	4	peddler
j	11	Colwell, William T.	6	1	f, m f	8	farmer



TOWNSHIP OF BIDDULPH

Jurors	No. on Roll	NAME	No. of Lot	Con. or St.	Description of Voter	O. P.	Occupation
j	809	Carter, James	pt 1	E F at, V I	f, m f		lmerchant
j	118	Crawley, George E.	21	2	f, m f	4	farmer
j	19	Curtain, Patrick	10, 11	1	f, m f	4	farmer
j	48	Collins, David	22, o p	1	t, m f	1	farmer
	50	Collins, Thomas	22	1	f, m f	1	farmer
j	18	Carey, Patrick	s half 9	1	f, m f	4	farmer
j	113	Gulbert, Richard	19	2	f, m f	2	farmer
j	119	Cooper, Robert	22	2	f, m f	2	farmer
	120	Cooper, Jonathan	22	2	fs, m t	2	farmer
	813	Collins, Joseph	pt 1	E F at, V I	f, m f	1	farmer
	49	Collins, Edsell	pt 25	1	f, m f	1	farmer
	44	Clark, Robert	19	1	oc, m f	1	farmer
j	99	Carey, Patrick	11	2	f, m f	4	farmer
	821	Clark, J. C.	pt 24	1	oc, m f	1	farmer
	166	Dancy, William	n half 11	3	f, m f	4	farmer
j	47	Dixon, Joseph	s half 21	1	f, m f	1	farmer
	803	Down, John	21	R 3, V I	f, m f	1	gentleman
j	8	Down, W. R.	4	1	t, m f	8	farmer
	801	Dickey, James	24	3	oc, m f	1	laborer
	51	Elliott, W. H.	23, 24	1	t, m f	1	farmer
	148	Elston, Richard	1	3	f, m f	8	farmer
	149	Elston, Jesse	1	3	fs, m f	8	farmer
	150	Elston, Richard	1	3	fs, m f	8	farmer
j	142	Flynn, Robert	20	3	f, m f	2	farmer
	38	Fraser, William	pt 15	1	f, m f	4	farmer
	183	Flynn, William	20	3	fs, m f	2	farmer

2 and 3 S. R.

Elec-

Occupation

farmer  
farmer  
farmer  
farmer  
farmer  
farmer  
farmer  
farmer  
farmer  
farmer  
farmer

farmer  
farmer  
farmer  
farmer  
merchant  
gentleman

peddler  
farmer

## LIST OF VOTERS

Jurors	No. on Roll	NAME	No. of Lot	Con. or St.	Description of Voter	Age	Occupation
j	14	Glavin, Edward	8	i	f, m f	8	farmer
	804	Gilmore, John	19	R 3, V I	f, m f	1	carpenter
	41	Gilmore, John	s pt 16	1	oc, m f	4	laborer
	<del>81</del>	<del>Cowan, James</del>	<del>pt 15</del>	<del>1</del>	<del>oc, m f</del>	<del>1</del>	<del>laborer</del>
	35	Hodgins, Moses	pt 15, n pt 16	1	f, m f	4	farmer
	36	Hodgins, Williams J.	pt 15	1	fs, m f	4	farmer
j	91	Hodgins, William D.	8	2	f, m f	10	farmer
j	102	Hodgins, Joseph	n half 13	2	f, m f	4	farmer
j	103	Hodgins, Charles C.	s half 13	2	f, m f	4	farmer
	155	Hennessey, James	4, n pt 5	3	f, m f	8	farmer
j	167	Hodgins, Steward	s half 11	3	f, m f	4	farmer
j	171	Hodgins, George	13	3	f, m f	4	farmer
j	172	Hodgins, Alexander	13	3	f, m f	4	farmer
j	173	Hodgins, Samuel H.	14	3	f, m f	4	farmer
j	718	Herbert, James	18, w pt 18	3, 4	f, m f	4	farmer
j	180	Herbert, William	19	3	f, m f	4	farmer
j	185	Hodgins, A. K.	22, 23	3, 2	f, m f	2	farmer
	814	Harleton, Robert	pt 2	E F at, V I	oc, m f	1	farmer
	186	Hodgins, Richard	22	3	oc, m f	2	farmer
	157	Hennessey, James	4	3	fs, m f	8	farmer
	152	Hennessey, Thomas A.	4	3	fs, m f	8	farmer
	<del>84</del>	<del>Hennessey, Charles</del>	<del>pt 15</del>	<del>1</del>	<del>oc, m f</del>	<del>1</del>	<del>laborer</del>
	156	Hennessey, Gustavus	4	3	oc, m f	8	farmer
	160	Isaac, Andrew	7	3	oc, m f	10	farmer
j	43	Jones, E. O.	19, 20	1	f, m f	1	farmer
j	82	Jamison, Alexander	4	2	f, m f	8	farmer
j	807	Jones, W. A., M.D.	3 to 6, o p	R 3, V I	f, m f	1	physician

## TOWNSHIP OF BIDDULPH

13

Occupation	Jurors	No. on Roll	NAME	No. of Lot	Con. or St.	Description of Voter	P. O.	Occupation
farmer	j	26	Kelly, Joseph	14, pt 15	1	f, m f	4	farmer
pen-ter	j	23	Kelly, Wm.	13	1	f, m f	4	farmer
laborer	j	188	Kent, William	23	3	f, m f	2	farmer
	j	190	Kent, Francis	24	3	f, m f	2	farmer
		25	Kelly, Wm. J.	13	1	fs, m f	4	farmer
		24	Kelly, Lawrence	13	1	fs, m f	4	farmer
farmer								
farmer								
farmer	j	21	Lewis, James	12	1	f, m f	4	farmer
farmer		22	Lewis, Walter	12	1	fs, m f	4	farmer
farmer	j	164	Lewis, William	n half 10	3	f, m f	4	farmer
farmer		14	Lewis, John J	pt 9	1	oc, m f	4	blacksmith
farmer	j	109	Lewis, Thomas A.	17	2	t, m f	4	farmer
farmer		15	Lewis, William	n half 9	1	t, m f	4	farmer
farmer								
farmer								
farmer								
farmer	j	84	McFalls, Steward A.	6	2	f, m f	8	farmer
farmer	j	83	McFalls, John	5	2	f, m f	8	farmer
farmer		85	McFalls, Archibald	6	2	fs, m f	8	farmer
farmer		86	McFalls, Andrew	6	2	fs, m f	8	farmer
farmer		88	McFalls, Alexander	7	2	f, m f	8	farmer
farmer		89	McFalls, James	7	2	fs, m f	8	farmer
farmer	j	93	McFalls, Robert	9	2	f, m f	10	farmer
farmer		162	McFalls, John	8	3	f, m f	10	farmer
farmer		90	McFalls, William John	7	2	fs, m f	8	farmer
farmer	j	163	McFalls, Oscar	9	3	f, m f	10	farmer
farmer	j	161	McFalls, Albert	8	3	f, m f	10	farmer
farmer	j	168	McFalls, John	12	3	t, m f	4	farmer
farmer	j	114	Morkin, Thomas	20, n half 31	2, 8	f, m f	2	farmer
farmer		115	Morkin, Hugh	20	2	fs, m f	2	farmer
farmer	j	151	Mitchell, Thomas	2, 2	3, 2	f, m f	8	farmer
farmer	j	152	Mitchell, John H.	n half 9	3	f, m f	8	farmer
farmer	j	174	Moneton, Mitchell	n half 15	3	f, m f	4	farmer
musician		87	McFalls, Henry	6	2	fs, m f	8	farmer

## LIST OF VOTERS

Jurors	No. on Roll	NAME	No. of Lot	Con. on St.	Description of Voter	O. #	Occupation
	96	McFalls, Marshall	9	2	fa, m f	8	farmer
	111	McCann, Thomas	15	2	oc, m f	4	farmer
	170	McFalls, Charles	12	3	fa, m f	4	farmer
	799	Mulland, John	25	R 3, V I	f, m f	1	gardener
	105	McCann, Thomas	15	2	oc, m f	4	farmer
	116	Morkin, William	20	2	fa, m f	2	farmer
	94	McFalls, Wilbert	9	2	fa, m f	2	farmer
	117	Morkin, John	20	2	fa, m f	2	farmer
	806	McFadden, John W	pt 11	R 3, V I	f, m f	1	laborer
j	83	McFalls, John	5	2	fa, m f	8	farmer
	95	McFalls, John	9	2	fa, m f	10	farmer
	815	McDougall, John	pt 2	E 1 <sup>st</sup> St, V I	oc, m f	1	farmer
j	1	Niven, Anthony	1	1	f, m f	8	farmer
	7	Neil, Richard	3	1	f, m f	8	farmer
j	5	Neil, Thomas	3, a half 2	1	t, m f	8	farmer
j	6	Neil, James	a half 2	1	t, m f	8	farmer
j	42	O'Dwyre, Anthony	18	1	f, m f	4	farmer
j	13	Oke, James	7	1	f, m f	8	farmer
j	98	Ryley, Thomas	10	2	f, m f	4	farmer
	97	Ryley, Philip	16	2	f, m f	4	farmer
j	106	Revington, W. W.	15, 16	2	f, m f	4	farmer
	107	Revington, W. W.	16	2	fa, m f	4	farmer
	108	Revington, Benj.	16	2	fa, m f	4	farmer
j	10	Rowland, William	5	1	f, m f	8	farmer
	33	Simpson, Thomas	pt 13	1	oc, m f	4	farmer
j	39	Simpson, W. H.	a half 16, 17	1	f, m f	4	farmer

TOWNSHIP OF BIDDULPH

No.	Occupation	No. on Roll	NAME	No. of Lot	Con. or St.	Description of Voter	Sex	Occupation
8	farmer	j 52	Sutton, James	23	1	f, m f	4	farmer
4	farmer	j 40	Simpson, John	17	1	f, m f	4	farmer
4	farmer	j 82	Sellars, George	pt 1	E F st, V I	f, m f	1	hotelkeeper
1	gardener	816	Simpson, Thomas	pt 2, pt 3, 13	E F st, V I	f, m f	1	farmer
4	farmer	29	Simpson, Moses	pt 15		f, m f	4	farmer
2	farmer	j 175	Thompson, Wm. J.	s half 15	3	f, m f	4	farmer
2	farmer	32	Webb, Richard	pt 15	1	oo, m f	4	farmer
1	laborer	j 819	Wilson, Joseph	17, 19	E F st, V I	f, m f	1	farmer

PART 2—Persons entitled to vote at Municipal Elections only

8	farmer	817	Bastard, Mrs. James	pt 13, o p	E F st, V I	f	1	widow
3	farmer	27	Boleyn, Mrs. Sarah	pt 15		f	4	widow
3	farmer	111	Crawley, Susan	17	2	f	4	widow
1	farmer	12	Colwell, John	6	1	f	8	farmer
		111	Crawley, W. H.	17	2	f	4	farmer
		198	Clark, Andrew	31, 35	R 3, V I	f	1	farmer
farmer		46	Dixon, Mrs. Joseph	s hf 21	1	f	1	widow
farmer		17	Glavin, Patrick	n hf 9	1	f	4	farmer
farmer		805	Herbert, Mrs. Charlotte	12, 13, 14, 15, o p, R3, R2, V I	f		1	
farmer		824	Hodgson, Robert	pt 3, 13-19	E F st, V I	2 f	1	
farmer		818	Hodgins, Robert	pt 24	1	f	1	farmer
farmer		9	Hanford, Thomas	4	1	f	8	farmer
farmer		802	Hodgins, R. C.	24	R 3, V I	f	1	laborer
		825	Hodgson, E.	18	2	f	1	farmer
farmer		808	Lintott, George	2	R 3, V I	f	1	laborer

## LIST OF VOTERS

JURORS	No. on Roll	NAME	No. of Lot	Con. or St.	Description of Voter	Occupation
	2	McCoy, Samuel	1	1	f	8 farmer
	179	McLeod, Robert	17	3	f	2 farmer
	139	McFalls, Alex.	12	3	f	2 farmer
	4	Mitchell, James	n half 2	1	f	8 farmer
<i>ll</i>	152	<i>Mitchell, John A.</i>	<i>1/2 2 - - 2 - -</i>	<i>1 - -</i>	<i>f - -</i>	<i>8 farmer</i>
	823	Shoff, Daniel	pt 13	E F st, V I	f	1 Inspector
	822	Williams, William	pt 24, o p	1	f	1 farmer

## PART 3—Persons entitled to vote at Elections to the Legislative Assembly only

	92	Crick, James	8	2	m f	10 laborer
	811	Carter, A. E.	pt 1	E F st, V I	m f	1 merchant
<i>ll</i>	<del>810</del>	<del>Carter, C. E.</del>	<del>pt 1</del>	<del>E F st, V I</del>	<del>m f</del>	<del>1 merchant</del>
	189	Dishman, Henry	23	3	m f	2 laborer
	181	Holloran, William	19	3	m f	2 farmer
<i>ll</i>	<del>154</del>	<del>Hild, John</del>	<del>2</del>	<del>3</del>	<del>m f</del>	<del>8 farmer</del>
	800	Mulland, James	25	3	m f	1 laborer
	184	Neil, John	22	3	m f	2 farmer
	820	Williams, Joseph	17, 18	E F st, V I	m f	1 farmer
	3	Wright, John	1	1	m f	8 farmer
	20	Willis, Frederick	11	1	m f	4 farmer

Occupation

## POLLING SUB-DIVISION No. 3

Comprising Cons. 4 and 5 from Lot 5 to Lot 25, inclusive; Con. 6 from Lot 6 to Lot 25, inclusive, and Lots 5, 6, 7 and 8, North Boundary.

## PART I—Persons entitled to vote at both Municipal Elections and elections to the Legislative Assembly.

farmer  
farmer  
farmer  
farmer  
*farmer*  
Inspector  
farmer  
Legis-  
laborer  
merchant  
~~merchant~~  
laborer  
farmer  
farmer  
laborer  
farmer  
farmer  
farmer

Jurors	No. on Roll	NAME	No. of Lot	Con. or St.	Description of Voter	P. O.	Occupation
j	228	Abbott, F. G.	12, 14, 10	4, 5	f, m f	2	farmer
	230	Abbott, Ernest	12	4	fs, m f	2	farmer
	237	Armitage, William	14	4	f, m f	2	farmer
j	236	Armitage, Joseph A.	14	4	f, m f	2	farmer
j	238	Armitage, Michael	n hf 15	4	f, m f	2	farmer
j	240	Atkinson, John S.	16	4	f, m f	2	farmer
j	246	Abbott, John	20	4	f, m f	2	farmer
	285	Armitage, George	n hf 12	5	oc, m f	2	farmer
j	287	Armitage, Thomas	n hf 13	5	f, m f	2	farmer
j	289	Abbott, Thomas	n hf 21, 21	5, 6	f, m f	2	farmer
j	595	Atkinson, William	n hf 6	n b	f, m f	10	farmer
j	591	Atkinson, John	s hf 6, e pt 5	n b	f, m f	10	farmer
	592	Atkinson, James A.	s hf 6	n b	fs, m f	10	farmer
	597	Atkinson, George	n hf 6	n b	fs, m f	10	farmer
	231	Abbott, Alonzo	12	4	fs, m f	2	farmer
	596	Atkinson, Henry	n hf 6	n b	fs, m f	10	farmer
	593	Atkinson, Alex.	s hf 6	n b	fs, m f	10	farmer
	300	Abbott, Clarence	n hf 21	5	fs, m f	2	farmer
	<del>229</del>	<del>Abbott, William</del>	<del>10</del>	<del>4</del>	<del>fs, m f</del>	<del>10</del>	<del>farmer</del>
	<del>220</del>	<del>Abbott, Henry</del>	<del>10</del>	<del>4</del>	<del>fs, m f</del>	<del>10</del>	<del>farmer</del>
	594	Atkinson, Milton	s hf 6	n b	fs, m f	10	farmer
j	282	Blackwell, Robert	10	5	f, m f	10	farmer
	281	Blackwell, George	10	5	f, m f	10	farmer
j	297	Blackwell, Freeman	18	5	f, m f	2	farmer

## LIST OF VOTERS

Jurors	No. on Roll	NAME	No. of Lot	Con. on St.	Description of Voter	O. A.	Occupation
j	347	Bennett, Thomas	16, 19, o p	6	f, m f	2	farmer
	348	Bennett, John	19	6	fs, m f	2	farmer
	349	Bennett, James	19	6	fs, m f	2	farmer
	350	Bennett, Joseph	19	6	fs, m f	2	farmer
	353	Bennett, Thomas	19	6	fs, m f	2	farmer
j	277	Brown, James	8	5	f, m f	10	farmer
	351	Bennett, Antony	19	6	fs, m f	2	farmer
	352	Bennett, Edward	19	6	fs, m f	2	farmer
j	215	Carroll, Hugh L.	5	4	f, m f	10	farmer
j	216	Carroll, Elijah	5	4	f, m f	10	farmer
j	226	Culbert, William	11	4	f, m f	2	farmer
	227	Culbert, Wilson W.	11	4	fs, m f	2	farmer
j	346	Cain, John	a hf 18, n pt 20	6, 7	f, m f	6	farmer
	357	Casey, William	23, 24	6	f, m f	2	farmer
	359	Casey, William	24	6	fs, m f	2	farmer
	359	Casey, James	24	6	fs, m f	2	farmer
	360	Casey, John	24	6	fs, m f	2	farmer
j	356	Carroll, Michael	20	6	f, m f	2	farmer
j	341	Carroll, John	15	6	f, m f	6	farmer
	342	Conway, Patrick	15	6	oc, m f	6	farmer
	348	Conway, Martin	15	6	oc, m f	6	farmer
j	223	Dickens, Thomas	9, 10	4	f, m f	10	farmer
	<del>224</del>	<del>Dickens, Richard</del>	<del>10</del>	<del>4</del>	<del>fs, m f</del>	<del>10</del>	<del>farmer</del>
j	284	Dobbs, Joseph	11, n hf 12	5	f, m f	2	farmer
j	286	Dobbs, W. B.	a hf 12	5	f, m f	2	farmer
j	607	Davis, Wm.	pt 7, pt 8	n b	f, m f	10	farmer
	598	Davis, Francis	n hf 6, pt 7, pt 8	4, n b	f, m f	10	farmer
	599	Davis, Nassau	pt 8	n b	fs, m f	10	farmer
	<del>225</del>	<del>Dickens, Butler</del>	<del>10</del>	<del>4</del>	<del>fs, m f</del>	<del>10</del>	<del>farmer</del>



## TOWNSHIP OF BIDDULPH

19

		Jurors	No. on Roll	NAME	No. of Lot	Con. or St.	Description of Voter	Age	Occupation
2	farmer		660	Davis, Frederick	pt 8	n b	fs, m f	10	farmer
2	farmer	j	<del>290</del>	<del>Davis, Aaron</del>	<del>17</del>	<del>5</del>	<del>f, m f</del>	<del>2</del>	<del>farmer</del>
2	farmer		602	Davis, W. J.	n pt 8	n b	fs, m f	10	farmer
2	farmer		601	Davis, Francis J.	n pt 8	n b	fs, m f	10	farmer
2	farmer								
0	farmer								
2	farmer		222	Hodgins, H. W.	8	4	fs, m f	10	farmer
2	farmer	j	220	Hodgins, Richard	8	4	f, m f	10	farmer
		j	233	Hodgins, Thomas D.	n hf 13	4	f, m f	2	farmer
		j	249	Haskett, Samuel	23	4	f, m f	2	farmer
		j	252	Hodgins, Wellington	25	4	f, m f	2	farmer
0	farmer	j	302	Harleton, John	n hf 22, e hf 22	5, 6	f, m f	2	farmer
0	farmer		303	Harleton, Thomas	s hf 22, w hf 22	5, 6	f, m f	2	farmer
2	farmer	j	304	Haskett, Wellington	23	5	f, m f	2	farmer
2	farmer		305	Haskett, Walter	23	5	fs, m f	2	farmer
6	farmer	j	308	Haskett, George	s hf 25, w pt 25	5, 6	f, m f	2	farmer
2	farmer		221	Hodgins, William J.	8	4	fs, m f	10	farmer
2	farmer	j	234	Hodgins, Samuel	s hf 13	4	f, m f	2	farmer
2	farmer	j	247	Hodgins, Henry	21	4	f, m f	2	farmer
2	farmer	j	291	Hodgins, W. E.	19	5	t, m f	2	farmer
2	farmer		235	Hodgins, Sidney	s half 13	4	fs, m f	2	farmer
2	farmer		925	Haskett, Mitchell	23	4	fs, m f	2	farmer
2	farmer		<del>296</del>	<del>Hodgins, Wellington</del>	<del>20</del>	<del>5</del>	<del>fs, m f</del>	<del>9</del>	<del>farmer</del>
		j	217	Isaac, James	6, 7, 7	3, 4	f, m f	10	farmer
0	farmer		218	Isaac, Ardu Jamec	7	4	fs, m f	10	farmer
			219	Isaac, William	7	4	fs, m f	10	farmer
	farmer								
	farmer								
0	farmer		337	Keeffe, Robert	14, s hf 12	6, 7	f, m f	2	farmer
0	farmer		338	Keeffe, Robert J.	14	6	fs, m f	2	farmer
	farmer		339	Keeffe, James T.	14	6	fs, m f	2	farmer
	farmer		340	Keeffe, Michael	14	6	fs, m f	2	farmer

## LIST OF VOTERS

Jurors	No. on Roll	NAME	No. of Lot	Con. or St.	Description of Voter	P. O.	Occupation
<i>OK</i>	j 299	Luker, Richard	w pt 5	n b	f, m f	8	farmer
	<del>300</del>	<del>Luker, William</del>	<del>w pt 7</del>	<del>n b</del>	<del>f, m f</del>	<del>10</del>	<del>farmer</del>
	j 332	Meagher, James	12, s hf 19	6, 7	f, m f	6	farmer
	j 328	McLaughlin, John	s hf 10	6	f, m f	6	farmer
	334	Meagher, John	12	6	fs, m f	6	farmer
	335	Meagher, Patriok	12	6	fs, m f	6	farmer
	j 301	Morgan, Wellington	s hf 21	5	f, m f	2	farmer
<i>OK</i>	336	Meagher, Edward	12	6	fs, m f	6	farmer
<i>OK</i>	<del>207</del>	<del>McGinty, Angus</del>	<del>24</del>	<del>5</del>	<del>oc, m f</del>	<del>2</del>	<del>farmer</del>
	<del>222</del>	<del>Meagher, James</del>	<del>10</del>	<del>6</del>	<del>f, m f</del>	<del>6</del>	<del>farmer</del>
	j 242	Neil, Richard	17	4	f, m f	2	farmer
	j 244	Neil, F. H.	19	4	f, m f	2	farmer
	245	Neil, Daniel	c hf 19	4	f, m f	2	farmer
	j 278	Ogden, Thomas	9, 8	5	t, m f	10	farmer
	j 239	Phillips, Daniel	s hf 15	4	f, m f	2	farmer
	j 243	Powe, William N.	e hf 18	4	f, m f	2	farmer
<i>i</i>	j 289	Quigley, Daniel	16	5	f, m f	3	farmer
	j 361	Quigley, John	e pt 25	6	f, m f	2	farmer
	363	Quigley, Thomas	e pt 25	6	fs, m f	2	farmer
	362	Quigley, John	e pt 25	6	fs, m f	2	farmer
<i>OK</i>	j 329	Ryder, James	11	6	f, m f	2	farmer
	330	Ryder, Patrick	11	6	fs, m f	2	farmer

TOWNSHIP OF BIDDULPH

Jurors	No. on Roll	NAME	No. of Lot	Con. or St.	Description of Voter	P. O.	Occupation
j	606	Smith, William J.	s hf 6, o p	4	f, m f	10	farmer
j	250	Seeli, Thomas	n hf 25, 24	5, 4	f, m f	2	farmer
j	251	Seeli, Alexander	24	4	f, m f	2	farmer
j	276	Turner, William	7	5	f, m f	10	farmer
j	243	Thompson, Joseph	22	4	oc, m f	2	farmer
j	344	Thompson, William	17	6	f, m f	2	farmer

PART 2—Persons entitled to vote at Municipal Elections only

288	Armitage, J. R.	s hf 13	5	f	2	
283	Dobbs, Mrs. Henry	11	5	f	2	widow
354	Donnelly, Patrick	n hf 18	6	f		
355	Donnelly, Robert	n hf 18	6	f		
280	Dereham, Mrs. Wm.	9	5	f	10	widow
293	Hodgins, John	19	5	f	2	farmer
295	Hodgins, Mrs. T. C.	20	5	f	2	widow
306	Haskett, Wm.	24	5	f	2	farmer
294	Hodgins, Wm. H.	19	5	f	2	farmer
292	Hodgins, Thomas	19	5	f	2	farmer
327	Keeffe, James	n hf 10, s hf 9	6	f	6	farmer
331	Keeffe, Thomas	13, 13	6, 7	f	6	farmer
590	Luker, Robert	w pt 5	n b	f	8	farmer

PART 3—Persons entitled to vote at Elections to the Legislative Assembly only

241	Armitage, Fred	5	4	m f	2	farmer
298	Armitage, Elijah	18	5	m f	2	farmer
345	Penny, Henry	17	6	m f	2	laborer
<del>579</del>	<del>Gabland, Charles</del>	<del>0</del>	<del>6</del>	<del>m f</del>	<del>10</del>	<del>farmer</del>

## POLLING SUB-DIVISION No. 4

Comprising Con. 7 from Lots 11 to 30, inclusive ; Cons. 8 and 9 from Lot 13 to Lot 33, inclusive ; Con. 10 from Lot 17 to Lot 32, inclusive ; Lots numbered 1 to 7, inclusive, S. B. ; Lots numbered 9 to 16, inclusive, North Boundary.

### PART I—Persons entitled to vote at both Municipal Elections and elections to the Legislative Assembly.

Jurors	No. on Roll	NAME	No. of Lot	Con. or St.	Description of Voter	P. O.	Occupation
j	389	Brown, Edward	16	7	t, m f	6	farmer
j	411	Breen, Michael	s hf 30, s hf 29	7, 11	f, m f	2	farmer
	452	Breen, John	30	8	fs, m f	2	farmer
	453	Breen, George	30	8	fs, m f	2	farmer
j	455	Blake, Michael	33	8	f, m f	7	farmer
j	483	Breen, Patrick	30, 30	9, 10	f, m f	7	farmer
j	492	Bryan, James B.	19, 20	10, n b	f, m f	5	farmer
j	500	Beatson, Joseph	24, s pt 25	10, 11	f, m f	5	farmer
j	631	Brooks, Philip	16	n b	f, m f	6	farmer
	632	Brooks, William A.	16	n b	fs, m f	6	farmer
	484	Breen, George	30	9	fs, m f	7	farmer
j	672	Blake, Elias D.	pt 2	s b	f, m f	7	tilem'k'r
	<del>501</del>	<del>Beatson, John W.</del>	<del>24</del>	<del>10</del>	<del>fs, m f</del>	<del>5</del>	<del>farmer</del>
	477	Barrett, Patrick	27	9	cc, m f	5	farmer
	493	Bryan, W. D.	19	10	fs, m f	5	farmer
	499	Beatson, Albert	s pt 22	10	f, m f	5	farmer
	673	Blake, Thomas H	pt 2	s b	fs, m f	7	tilem'k'r
j	379	Carroll, James	15	7	f, m f	6	farmer
j	434	Carrigan, John	21	8	f, m f	2	farmer
j	481	Carrigan, James	29	9	f, m f	5	farmer
j	450	Carrigan, William	32	8	f, m f	2	farmer
	482	Carrigan, Edward	29	9	fs, m f	5	farmer
	498	Carty, Dennis	w hf, n hf 21	10	f, m f	5	farmer

TOWNSHIP OF BIDDULPH

Jurors	No. on Roll	NAME	No. of Lot	Con. or St.	Description of Voter	P. O.	Occupation
	447	Dewan, James	28	8	fs, m f	2	farmer
	439	Dewan, John	pt 25	8	oc, m f	2	farmer
j	446	Dewan, William J.	s hf 27	10	f, m f	2	cheesem'r
	448	Dewan, Patrick	28	8	fs, m f	2	farmer
	623	Dengham, Wm.	pt 15	n b	oc, m f	6	farmer
j	512	Flood, John	32	10	f, m f	5	farmer
j	431	Grace, Michael	19	8	f, m f	6	farmer
j	470	Galliher, William	24	9	oc, m f	6	farmer
	469	Galliher, Thomas	24	9	fs, m f	6	farmer
	471	Galliher, John	24	9	fs, m f	6	farmer
	460	Heenan, James	20, 20, s hf 20	8, 9, 10	f, m f	6	farmer
	461	Heenan, Anthony	20	9	fs, m f	6	farmer
	462	Heenan, Patrick	20	9	fs, m f	6	farmer
	463	Heenan, Dennis	20	9	fs, m f	6	farmer
j	465	Heenan, Dennis	21, n hf 22	9	f, m f	6	farmer
j	466	Heenan, Michael	21	9	f, m f	6	farmer
	495	Hodgins, William	n hf 20, pt 22	10	f, m f	5	farmer
	496	Hodgins, William	n hf 20	10	fs, m f	5	farmer
	497	Hodgins, Edward	n hf 20	10	fs, m f	5	farmer
j	503	Hanson, George	28, 27	10, 9	f, m f	5	farmer
j	504	Hanson, Thomas	27	9	f, m f	5	farmer
j	474	Jackson, William	e hf 25, pt 26, 27	9, 10	f, m f	2	farmer
	475	Jackson, Michael	e hf 25	9	fs, m f	6	farmer
	425	Kelly, James	n hf 15	8	fs, m f	6	farmer
j	608	Kelly, James	9, 16	n b, 9	f, m f	6	farmer

lot 13 to Lot 33,  
to 7, inclusive,  
y.

ipal Elec-  
ly.

P. O.	Occupation
6	farmer
2	farmer
2	farmer
2	farmer
7	farmer
7	farmer
5	farmer
5	farmer
6	farmer
6	farmer
7	farmer
7	tilem'k'r
5	farmer
5	farmer
5	farmer
7	tilem'k'r
6	farmer
2	farmer
5	farmer
2	farmer
5	farmer
5	farmer

## LIST OF VOTERS

Jurors	No. on Roll	NAME	No. of Lot	Con. on St.	Description of Voter	A. O.	Occupation
	604	Kelly, Jeremiah	9	n b	fs, m f	6	farmer
j	618	Kensella, Thomas	12	u b	f, m f	6	farmer
	605	Kelly, Joseph	9	n b	fs, m f	6	farmer
j	424	Kelly, John	19	9	t, m f	6	farmer
	430	Lamphier, James	18	8	f, m f	6	farmer
j	458	Lamphier, Anthony jr.	18	9	f, m f	6	farmer
	459	Lamphier, Anthony sr.	18	9	f, m f	6	farmer
j	681	Langford, Elijah	6, o p	s b	f, m f	7	farmer
j	682	Langford, W. D.	7	s b	f, m f	7	farmer
	683	Langford, Isaac	7	s b	f, m f	7	farmer
j	511	Langford, Robert	31	10	f, m f	5	farmer
	375	McGee, James	s hf 11	7	f, m f	6	farmer
j	390	McLaughlin, John	24	7	f, m f	2	farmer
	406	McGee, William	s hf 29, n hf 30 7		f, m f	2	farmer
	469	McGee, Martin	s hf 29, n hf 30 7		fs, m f	2	farmer
	407	McGee, Michael	s hf 29, n hf 30 7		fs, m f	2	farmer
	408	McGee, Edward	s hf 29, n hf 30 7		fs, m f	2	farmer
j	420	McLaughlin, Martin	14	8	f, m f	6	farmer
	421	McLaughlin, Ambrose	14	8	fs, m f	6	farmer
	435	Mitchell, Patrick	23, 17, o p	8, 9	f, m f	6	farmer
	392	McLaughlin, Joseph	24	7	fs, m f	6	farmer
	616	McGee, James	e pt 13	n b	fs, m f	6	farmer
	436	Mitchell, Thomas	23	8	fs, m f	2	farmer
	454	McDonadd, Jeremiah	s hf 31	8	f, m f	2	farmer
	391	McLaughlin, Thomas	24	7	fs, m f	2	farmer
j	456	McCarthy, Joseph	n hf 15	9	f, m f	6	farmer
j	488	Mara, Michael	pt 17, pt 19	10, n b	f, m f	5	farmer
j	502	MacKey, Timothy	s hf 25, n hf 26 10		f, m f	5	farmer
j	610	Mellhargy, Dennis	s pt 10, n hf 9	n b, 6	f, m f	6	farmer
j	654	McGee, Patrick	n w pt 13, n hf 11	n b, 7	f, m f	6	farmer

## TOWNSHIP OF BIDDULPH

25

P. O.	Occupation	Jurors	No. on Roll	NAME	No. of Lot	Con. or St.	Description of Voter	Age	Occupation
6	farmer		615	McGee, Patrick sr.	se pt 13	n b	f, m f	6	farmer
6	farmer		617	McGee, Jeremiah	pt 13	n b	fs, m f	6	farmer
6	farmer	j	618	Morley, Joseph	n pt 14	n b	f, m f	6	farmer
6	farmer		619	Morley, Thomas	pt 14	n b	fs, m f	6	farmer
		j	630	Milson, Jabez	pt 15	n b	f, m f	6	farmer
			621	Milson, John H.	pt 15	n b	f, m f	6	farmer
6	farmer	j	676	McIlhargy, John	4	s b	f, m f	7	farmer
6	farmer		678	McIlhargy, Daniel	4	s b	fs, m f	7	farmer
6	farmer		629	Milson, George H.	pt 15	n b	oc, m f	6	farmer
7	farmer		677	McIlhargy, Archibald	4	s b	fs, m f	7	farmer
7	farmer		626	Morkin, Timothy	s e pt 14	n b	fs, m f	6	farmer
7	farmer		627	Morkin, John	s o pt 14	n b	fs, m f	6	farmer
5	farmer	j	480	Madigen, Timothy	28	9	t, m f	5	farmer
			394	McLaughlin, Thomas	pt 25	7	fs, m f	2	farmer
			437	Mitchell, Patrick	23	8	fs, m f	2	farmer
			395	McLaughlin, William	pt 25	7	fs, m f	2	farmer
6	farmer		422	McLaughlin, Martin	14	8	fs, m f	2	farmer
2	farmer		410	McGee, John	s hf 29	7	fs, m f	2	farmer
2	farmer		438	Mitchell, Joseph	23	8	fs, m f	6	farmer
2	farmer		628	Morkin, Thomas	pt 14	n b	fs, m f	6	farmer
2	farmer								
2	farmer								
6	farmer	j	485	Nangle, John T.	31	9	f, m f	7	farmer
6	farmer		620	Nairn, William	n pt 14	n b	oc, m f	6	farmer
6	farmer	j	671	Nangle, William	pt 2	s b	f, m f	7	farmer
6	farmer								
6	farmer								
2	farmer		622	Ogden, William	pt 15	n b	f, m f	6	blacksmith
2	farmer	j	609	Ogden, John	n pt 10	n b	oc, m f	6	farmer
2	farmer								
6	farmer								
5	farmer								
5	farmer		377	Patton, James	s hf 12	7	fs, m f	6	farmer
6	farmer	j	428	Powe, Michael	17, o p	8	f, m f	6	farmer
6	farmer		429	Powe, W. C.	17	8	fs, m f	6	farmer

## LIST OF VOTERS

Jurors	No. on Roll	NAME	No. of Lot	Con. or St.	Description of Voter	P. O.	Occupation
j	489	Powe, James	18	10	f, m f	5	farmer
	490	Powe, Joseph	18	10	fs, m f	5	farmer
	491	Powe, Daniel	18	10	fs, m f	5	farmer
j	398	Ryder, Joseph	26	7	f, m f	2	farmer
j	399	Ryder, William	26	7	f, m f	2	farmer
j	395	Ryder, James	pt 20	7	f, m f	2	farmer
j	396	Ryder, James	26, pt 27 & 25, o p	7	f, m f	2	farmer
	401	Ryder, James	w hf 27	7	fs, m f	2	farmer
j	397	Ryder, John	26	7	f, m f	2	farmer
j	400	Ryder, John	s hf 27, w hf 27, o p	6, 7	f, m f	2	farmer
j	441	Ryder, William	s e pt 26, pt 27, n hf	21 8	f, m f	2	farmer
j	457	Ryan, Martin	s hf 15, pt 15	9, 8	f, m f	6	farmer
	449	Ryder, W. H.	pt 26	8	fs, m f	2	farmer
j	382	Ryder, Patrick jr.	pt 17, pt 18	7	f, m f	6	farmer
	442	Ryder, Joseph	pt 26	8	fs, m f	2	farmer
	<del>675</del>	<del>Ryan, Seymour</del>	<del>pt 2</del>	<del>8</del>	<del>f, m f</del>	<del>7</del>	<del>farmer</del>
j	378	Sullivan, Edward	14	7	f, m f	6	farmer
	443	Sullivan, Owen	n pt 27	8	f, m f	2	farmer
	507	Shea, Michael	n hf 29	10	fs, m f	5	farmer
	444	Sullivan, Daniel	n pt 27	8	fs, m f	2	farmer
	505	Shea, James	29, 28, o p	10, 11	f, m f	5	farmer
	508	Shea, Thomas	n hf 29	10	fs, m f	5	farmer
	509	Shea, Patrick	n hf 29	10	fs, m f	5	farmer
	<del>404</del>	<del>Toohy, Dennis</del>	<del>n hf 29</del>	<del>7</del>	<del>fs, m f</del>	<del>2</del>	<del>farmer</del>
j	388	Toohy, William	22	7	f, m f	2	farmer
j	389	Toohy, Patrick	22	7	f, m f	2	farmer
j	402	Toohy, James	n pt 20, 28, 29	7	f, m f	2	farmer
	432	Toohy, Timothy	22	8	f, m f	2	farmer



## TOWNSHIP OF BIDDULPH

27

Jurors	No. on Roll	NAME	No. of Lot	Con. or St.	Description of Voter	C. P.	Occupation
5	farmer	409 Toohy, John	n hf 29	7	fs, m f	6	farmer
5	farmer	433 Toohy, Cornelius	22	8	fs, m f	2	farmer
5	farmer	j 468 Toohy, Dennis	23	9	f, m f	2	farmer
		j 387 Toohy, Thomas	21	7	f, m f	7	farmer
2	farmer	j 383 Whalen, John	a hf 18, n hf 19	7	f, m f	6	farmer
2	farmer	384 Whalen, Joseph	a hf 18	7	fs, m f	6	farmer
2	farmer	j 473 Whalen, W. H.	w hf 25	9	f, m f	5	farmer
2	farmer	j 611 Whelihan, Patrick	11	n b	f, m f	6	farmer
2	farmer	j 612 Whelihan, Thomas	11	n b	f, m f	6	farmer

## PART 2—Persons entitled to vote at Municipal Elections only

	farmer	426 Bruin, John	a hf 15	8	f	6	farmer
	farmer	451 Breen, Bridget	30, a hf 29	8	f	2	widow
	farmer	486 Benn, Hugh	32	9	f	7	farmer
	farmer	679 Crunnigan, Michael	5	a b	f	7	farmer
	farmer	680 Crunnigan, John	5	a b	f	7	farmer
	farmer	445 Dewan, Mrs. Mary	28, o p	8	f	2	widow
	farmer	472 Dignam, James	24	9	f	4	
	farmer	513 Flood, Daniel	32	10	f	5	farmer
	farmer	476 Harrigan, Mrs. Mary	pt 26, pt 25	9, 8	f	2	widow
	farmer	423 Kelly, Mrs. Catherine	n pt 15	8	f	6	widow
	farmer	427 Lamphier, Honorah	16	8	f	6	widow
	farmer	393 McLaughlin, Mrs. T.	w pt 25, pt 26	7, 6	f	2	widow

## LIST OF VOTERS

Jurors	No. on Roll	NAME	No. of Lot	Con. on St.	Description of Voter	A. O.	Occupation
	625	Morkin, Mrs. Catherine	13, s e pt 14	8, n h	f	6	widow
	467	Morkin, Edward	s hf 23	9	f	6	farmer
	464	McDonald, Andrew	19	9	f	6	farmer
	376	Patton, Mrs. Mary	s hf 12	7	f	6	widow
	670	Phinn, George E.	1	s b	f	7	tilem'k'r
	147	Ryan, John	s hf 3	s b	f	2	farmer
	381	Ryder, Patrick	16	7	f	6	farmer
	506	Shea, Daniel	s hf 29	10	f	2	
	624	Sutherby, Maria	pt 15	n b	f	6	widow
	886	Toohy, Mrs. Margaret	21, 22	7	f	2	widow

PART 3—Persons entitled to vote at Elections to the Legislative Assembly only

<i>42</i>	<del>478</del>	<del>Barrett, William</del>	<del>27</del>	<del>9</del>	<del>m f</del>	<del>5</del>	<del>farmer</del>
	479	Barrett, Patrick jr.	27	9	m f	5	farmer
	494	Hennings, William	19	10	m f	5	farmer
	405	O'Shea, Patrick J.	n hf 29	7	m f	2	farmer
	674	Ryan, John	pt 2	s b	m f	7	laborer
	487	Whalen, William	30	9	m f	7	farmer

Occupation  
 6 widow  
 6 farmer  
 6 farmer  
 6 widow  
 7 tilem'k'r  
 2 farmer  
 6 farmer  
 2  
 6 widow  
 2 widow  
 Legis-  
 farmer  
 5 farmer  
 farmer  
 farmer  
 laborer  
 828  
 farmer  
 521  
 j 520

### POLLING SUB-DIVISION No. 5

Comprising Cons. 11, 12, 13, 14 and 15; Lots 17 to 31, inclusive, N. B.; Lots No. 8 to 24, inclusive, S. B., and the Villages of Granton and Awmick.

#### PART I—Persons entitled to vote at both Municipal Elections and elections to the Legislative Assembly.

Jurors	No. on Roll	NAME	No. of Lot	Con. or St.	Description of Voter	A.	Occupation
	842	Arnold, Fred J.	8	w m st V G	f, m f	5	tinsmith
	701	Beason, George	28	12	t, m f	5	farmer
	528	Barry, John	pt 26, pt 25, o p 11		f, m f	5	farmer
j	636	Brook, John	e pt 17	n b	f, m f	6	farmer
j	645	Brown, John Y.	22	n b	f, m f	5	farmer
j	658	Blatchford, William	w hf 28	n b	oc, m f	5	farmer
	<del>808</del>	<del>Becker, James H.</del>	<del>10, pt 11</del>	<del>e k st V G</del>	<del>f, m f</del>	<del>5</del>	<del>carpenter</del>
j	849	Brooks, F. L.	pt 12, o p	w m st V G	f, m f	5	carpenter
j	852	Bernard, Walter	10	w m st V G	f, m f	5	blacksmith
j	877	Branion, George	w hf 28, 5, 6, 7 n b,	e q st V G	f, m f	5	gentleman
	873	Baker, Henry	15, o p	e m st V G	f, m f	5	gentleman
j	859	Baynes, William	pt 2	e m st V G	f, m f	5	merchant
	846	Beatson, Albert	8, 28	e k st V G,	12 f, m f	5	farmer
	888	Butler, William	pt 1	w q st V G	f, m f	5	livery
	876	Brownlee, Rev. W. F.	8	e q st V G	t, m f	5	clergyman
	827	Baynes, Charles	18, 19, 18, 19	w m, e k st V G	oc, m f	5	gentleman
	820	Baynes, Fred	18, 19, 18, 19	w m, e k st V G	t, m f	5	laborer
	828	Baynes, David	18, 19, 18, 19	w m, e k st V G	t, m f	5	laborer
	<del>827</del>	<del>Brook, Alfred</del>	<del>e pt 17</del>	<del>n b</del>	<del>f, m f</del>	<del>5</del>	<del>farmer</del>
	521	Carty, Albert	23	11	fs, m f	5	farmer
j	520	Casey, Joseph	24, pt 25	11	f, m f	5	farmer

## LIST OF VOTERS

Juro	No. on Roll	NAME	No. of Lot	Con. or St.	Description of Voter	P. O.	Occupation
j	853	Coxon, Samuel	pt 14, 15	w m st V G	f, m f	5	painter
	866	Cameron, Hugh	7, 7	em, wq st V G	f, m f	5	gentleman
	891	Cook, Charles	5	w k st V G	f, m f	5	laborer
	894	Carter, Gilbert	12, 13	w k st V G	f, m f	5	gentleman
	885	Dann, Alex.	pt 1, o p	w q st V G	f, m f	5	blacksmith
	724	Dykes, James	n e pt 24	s b	f, m f	9	farmer
j	727	Draper, William	pt 24	s b	t, m f	9	farmer
	857	Dann, William	pt 8	w q st V G	f, m f	5	V. S.
	875	Davis, Richard	11	w q st V G	f, m f	5	gentleman
j	562	Dinsmore, Edward	n hf 29	13	f, m f	5	farmer
	725	Dykes, James	n e pt 24	s b	fs, m f	9	farmer
j	862	Dinsmore, George	12, 13, 14, 15	e k st V G	f, m f	5	agent
	698	Eedy, John	13	e m st V G	f, m f	5	gentleman
j	697	Eedy, Fred	s hf 13	s b	f, m f	5	farmer
j	543	Fulton, John E.	23	12	t, m f	5	farmer
	642	Foster, Albert	23	n b	oc, m f	5	farmer
j	665	Ferris, John	n pt 30	n b	f, m f	5	farmer
j	713	Foreman, William	w pt 19	s b	f, m f	5	farmer
j	544	Foster, James	pt 25	12	t, m f	5	farmer
j	863	Foster, Charles	pt 4, 14	e m st V G	f, m f	5	butcher
	918	Ford, George	4	n levitt st V A	f, m f	5	laborer
	908	Foreman, Fred	3	w m st V A	f, m f	5	laborer
	847	Fotheringham, T.	1	w m st V G	t, m f	5	hotelkeeper
	904	Fletcher, John	1	w m st V A	t, m f	5	laborer
j	555	Foster, George	23, pt 23	13, n b	f, m f	5	farmer
	545	Fitzgerald, George E.	pt 26	12	f, m f	5	gentleman
j	546	Fitzgerald, George jr.	pt 26	12	f, m f	5	gentleman
	905	Fletcher, James	1	w m st V A	t, m f	5	gentleman

## TOWNSHIP OF BIDDULPH

31

Occupation	Jurors	No. on Roll	NAME	No. of Lot	Con. or St.	Description of Voter	P. O.	Occupation
painter		540	Grant, William	22, s hf 21, o p 12		f, m f	5	farmer
gentleman		541	Grant, William	22	12	fs, m f	5	farmer
laborer	j	553	Gibson, Arthur	30	12	t, m f	5	farmer
gentleman	j	565	Gibson, W. H.	27	13	t, m f	5	farmer
	j	692	Garrett, Gilbert	11, o p	s b	f, m f	5	farmer
	j	576	Gowan, Nassau	n h' 28	14	f, m f	5	farmer
blacksmith	j	706	Gowan, Joseph H.	pt 17	s b	f, m f	5	farmer
farmer	j	705	Gowan, F. W.	pt 17	s b	f, m f	5	farmer
farmer	j	707	Gowan, Benj.	pt 17	s b	f, m f	5	farmer
V. S.		833	Grant, James, J. P.	4, 4	w m, ek st	VG f, m f	5	postmaster
gentleman	j	837	Grant, Joseph	pt 6, 1, o p	w m, ek st	VG f, m f	5	merchant
farmer	j	867	German, James	8	e m st	VG t, m f	5	blacksmith
farmer	j	638	Gunning, Robt.	18, n e pt 17	n b, 10	t, m f	6	farmer
agent	j	830	German, Horace	3	w m st	VG t, m f	5	butcher
gentleman		634	Hodgson, David	pt 17	n b	fs, m f	6	student
farmer	j	557	Hodgson, James	pt 25	13	t, m f	6	farmer
	j	563	Hobbs, Richard S.	30	13	f, m f	5	farmer
		633	Hodgson, John W.	pt 17	n b	t, m f	6	farmer
farmer		<del>671</del>	<del>Hobbs, James</del>	<del>pt 11, 10</del>	<del>e m st</del>	<del>VG f, m f</del>	<del>5</del>	<del>gentleman</del>
farmer	j	714	Hudson, W. H.	e hf 19	s b	f, m f	5	farmer
farmer	j	851	Harriston, Rev. T. E.	13	w m st	VG oc, m f	5	clergyman
farmer		927	Hodgson, Thomas	pt 17	n b	fs, m f	6	farmer
farmer								
butcher								
laborer								
laborer	j	560	Jermyn, David S.	28	13	f, m f	5	farmer
keeper		581	Jermyn, John	30	14	f, m f	5	farmer
laborer		700	Jackson, Richard	14, 15	s b	f, m f	5	farmer
farmer	j	550	Jermyn, Richard	27, 5 6 7	12, eq st	VG f, m f	5	farmer
eman	j	699	Jackson, R. T.	14, 15	s b	f, m f	5	farmer
eman		860	Jamieson, George	pt 11	w m st	VG t, m f	5	pumpmaker
eman		832	Jamieson, David	pt 1	w m st	VG f, m f	5	baker

## LIST OF VOTERS

Jurors	No. on Roll	NAME	No. of Lot	Con. on St.	Description of Voter	Age	Occupation
j	516	Kelly, James	20	11	f, m f	5	farmer
j	517	Kennedy, John	21	11	f, m f	5	farmer
	518	Kennedy, Jos-ph	21	11	fs, m f	5	farmer
	579	Lindsay, Warner	a hf 28	14	fs, m f	5	farmer
j	529	Langford, Alex. A.	s hf 26	11	f, m f	5	farmer
	536	Langford, Edward	30	11	fs, m f	5	farmer
	911	Levitt, Wm.	5, 7	s levitt st VA	f, m f	5	gentleman
	530	Langford, Everets	s hf 26	11	fs, m f	5	farmer
	919	Langford, James	5, 6	w m st V A	oc, m f	5	engineer
	577	Lindsay, Joseph	s hf 28, n hf 29, 28 14, 15		f, m f	5	farmer
j	585	Lindsay, Mark	s hf 28	15	f, m f	5	farmer
	578	Lindsay, W. A.	s hf 28	14	fs, m f	5	farmer
j	582	Langford, Nelson	n hf 27	15	f, m f	5	farmer
j	711	Langford, Ephriam	e pt 18	s b	f, m f	5	farmer
j	586	Langford, Ezra	w pt 29	15	f, m f	5	farmer
	901	Langford, John	A	John at V A	f, m f	5	sawyer
j	684	Langford, Isaac A.	8	s b	f, m f	5	farmer
j	892	Langford, William A.	6, e hf 31	wk st VG, 12	f, m f	5	farmer
j	709	Langford, Ernest	w pt 18, pt 29	e h, 15	f, m f	5	farmer
	820	Langford, Elias	2, 2	ek, w m st VG	f, m f	5	laborer
j	834	Lang, Hugh, M. D	5, 5	w m, ek at VG	f, m f	5	druggist
	835	Lang, Charles A, M. B.	5	w m st VG	f, m f	5	student
j	861	Laukin, John	pt 3, pt 4, o p	e m st VG	f, m f	5	hotelkeeper
	878	Laukin, Albert	5	w qu st VG	f, m f	5	laborer
	685	Langford, Harold	8	a b	fs, m f	5	student
j	723	Little, Thomas D.	pt 24	a b	oc, m f	9	farmer
j	907	Lambourne, William	pt 10, pt 11	w m st VG	f, m f	5	laborer
j	903	Langford, Abner	R K A	Jn st, em st VA	f, m f	5	sawyer
	<del>700</del>	<del>Langford, Elud</del>	<del>e pt 18</del>	<del>s b</del>	<del>fs, m f</del>	<del>5</del>	<del>farmer</del>
	691	Lawrence, George	10	s b	oc, m f	5	laborer
	710	Langford, Albert	e pt 18	s b	fs, m f	5	student

*Ch*

## TOWNSHIP OF BIDDULPH

33

Jurors	No. on Roll	NAME	No. of Lot	Con. or St.	Description of Voter	Age	Occupation
j	659	Mossey, J. E.	e pt 28	n b	f, m f	9	farmer
	527	Mackey, Valentine	pt 25	11	f, m f	5	farmer
	531	Meagher, Edward	27	11	f, m f	5	farmer
	532	Meagher, John	27	11	fs, m f	5	farmer
	533	Meagher, James	27	11	fs, m f	5	farmer
	644	Mowbray, Harvey	21	n b	fs, m f	5	farmer
	664	McConuel, John	e hf 29	n b	fs, m f	5	farmer
	643	Mowbray, Philip	21	n b	f, m f	5	farmer
	663	McConnel, Andrew	e hf 29	n b	f, m f	9	farmer
j	686	McRoberts, Andrew	10, 9	s b	f, m f	5	farmer
	687	McRoberts, Charles	9	s b	fs, m f	5	farmer
	688	McRoberts, Alfred	9	s b	fs, m f	5	farmer
j	718	McLaughlin, Alex.	22	s b	f, m f	9	farmer
j	865	Murray, John E.	5, C, 6	em, wq st V G	f, m f	5	merchant
	889	Mack, W. J.	1	w k st V G	f, m f	6	laborer
	522	McCarthy, Michael	23, 23	11, 10	f, m f	5	farmer
	523	McCarthy, Jeremiah	23	11	fs, m f	5	farmer
	524	McCarthy, James	23	11	fs, m f	5	farmer
j	583	McAdams, John	s hf 27	15	t, m f	5	farmer
	848	Middleton, William	9, pt 10	w m st V G	f, m f	5	hotelkeeper
j	556	Nesbitt, George	26, w hf 31	13, 12	oc, m f	5	farmer
	916	Norton, James	1	e m st V A	f, m f	5	laborer
	510	O'Donnell, Daniel	n hf 29	11	oc, m f	5	laborer
j	717	Perrin, Ed.	21	s b	f, m f	9	farmer
	850	Pidd, Layton	pt 12	w m st V G	f, m f	5	builder
j	890	Pullybank, Edwin	2 3 4	w k st V G	f, m f	5	mason
	567	Parr, Samuel	25	14	fs, m f	5	farmer

## LIST OF VOTERS

Jurors	No. on Roll	NAME	No. of Lot	Con. or St.	Description of Voter	P. O.	Occupation
j	647	Rigney, Thomas	24	n b	f, m f	5	farmer
	648	Rigney, James E.	24	n b	fa, m f	5	farmer
	656	Radcliffe, Robert	pt 27	n b	f, m f	5	farmer
j	655	Radcliffe, R. H.	n pt 27	n b	f, m f	5	farmer
	657	Radcliffe, W. D.	27	n b	fs, m f	5	farmer
	666	Robinson, Andrew	pt 31	n b	f, m f	5	farmer
	902	Robinson, Robert	B C J K L	Jn st V A	f, m f	5	laborer
j	597	Raycroft, Richard jr.	n hf 21	12	t, m f	5	farmer
j	551	Rathburn, George	29	12	oc, m f	5	farmer
j	696	Rowell, John	n hf 13	s b	f, m f	5	farmer
j	646	Shiple, Thomas	22	n b	t, m f	5	farmer
j	900	Shiple, A. L.	G T R station	V G	oc, m f	5	GTR agent
	690	Shaw, Ithamar	9	s b	oc, m f	5	laborer
	651	Stanley, T. H.	n hf 26	n b	fs, m f	5	farmer
j	650	Stanley, R. D.	n hf 26, pt 25	n b	f, m f	5	farmer
j	652	Stanley, W. D.	s hf 26, s pt 25	n b	f, m f	5	farmer
	654	Stanley, J. R.	s hf 26	n b	fs, m f	5	student
	715	Smith, Robert	20, e pt 29	s b, 15	f, m f	5	farmer
j	895	Squires, Thomas	14, w pt 24	wk st VG, 12	f, m f	5	farmer
	896	Squires, Stephen	pt 24	12	fs, m f	5	farmer
	881	Sandburn, Henry	2, pt 3	w q st V G	t, m f	5	laborer
	898	Shiple, John T.	7	w k st V G	oc, m f	5	laborer
	880	Shoebottom, H.	pt 4	w qu st V G	f, m f	5	mailcarrier
	653	Stanley, V. M.	s hf 26	n b	fs, m f	5	farmer
	869	Switzer, H. A.	8	e m st V G	t, m f	5	harnessm'r
	870	Smith, Rev. E.F.M., B.A.	9	e m st V G	oc, m f	5	clergyman
j	889	Thompson, G. W., M. B.	1, 2, pt 3	e q st V G	t, m f	5	physician



TOWNSHIP OF BIDDULPH

Jurors	No. on Roll	NAME	No. of Lot	Con. or St.	Description of Voter	Age	Occupation
j	641	Westman, S. J.	e pt 19	n b	oc, m f	5	farmer
	514	Westman James	19, o p	11	f, m f	5	farmer
	515	Westman, A. H.	19	11	fs, m f	5	farmer
j	561	Westman, William	28	13	t, m f	5	farmer
	548	Westman, Charles E.	pt 26	12	fs, m f	5	farmer
j	549	Westman, George	26	12	f, m f	5	farmer
	572	Westman, Alex.	27	14	fs, m f	5	farmer
	571	Westman, Isaac	27	14	f, m f	5	farmer
	<del>574</del>	<del>Westman, Werner</del>	<del>27</del>	<del>14</del>	<del>f, m f</del>	<del>5</del>	<del>farmer</del>
	573	Westman, Isaac F.	27	14	fs, m f	5	farmer
j	702	Westman, Douglas	16	s b	f, m f	5	farmer
	704	Westman, Henry sr.	16	a b	f, m f	5	farmer
	879	Westman, Cornelius	pt 3, 4	e q st V, G	f, m f	5	barber
j	558	Wilson, John	27	13	f, m f	5	farmer
j	667	Wilson, Ridgeway	pt 31, pt 30	n b	f, m f	9	farmer
j	668	Wilson, William	pt 29	n b	f, m f	9	farmer
	569	Wallis, James	26	14	f, m f	5	farmer
	570	Wallis, John E.	26	14	fs, m f	5	farmer
j	594	Webb, Archibald	12	s b	f, m f	5	farmer
	722	White, Samuel	pt 23	s b	f, m f	9	farmer
	720	White, S. W.	pt 23	s b	fs, m f	9	farmer
	695	Webb, Isaac	12	s b	fs, m f	5	student
	927	Westman, J. P.	19	11	fs, m f	5	student
	922	Waddell, John	8, 9	e m st V A	t, n f	5	laborer
	872	Weir, George	13	e m st V G	t, m f	5	laborer
	721	White, Thomas W.	pt 23	s b	fs, m f	9	farmer
	575	Westman, Cameron	27	14	fs, m f	5	farmer
j	726	Wright, Joseph	s pt 24	s b	f, m f	9	farmer
j	839	Webb, C. M. jr.	1, 7, 7	w m, ek st VG	oc, m f	5	merchan.
	914	White, D. G.	2	e m st V A	t, m f	5	shoemaker
j	580	Wallis, Cicero	s hf 29	14	f, m f	5	farmer
	843	Wreford, Aaron	pt 2	e m st V G	f, m f	5	tailor
	915	White, Charles	2	e m st V A	f, m f	5	laborer

No. on Poll	NAME	No. of Lot	Con. on St.	Description of Voter	P. O.		
					P.	O.	
<b>PART 2—Persons entitled to vote at Municipal Elections only</b>							
542	Brown, W. J	23	12	f	5	farmer	
897	Brooks, Mrs. M.	10, 11	e k st V G	f	5	widow	
854	Beamish, Mrs. M.	17	w m st V G	f	5	widow	
566	Crawford, David	25	14	f	5	farmer	
520	Carty, Mrs. Sarah	22	11	f	5	widow	
924	Cartor, J. W.	grain storehouse	V G	f	5		
538	Dearness, Mrs. John	n hf 21	12	f	5	widow	
539	Dearness, John	n hf 21	12	f		I. P. S.	
855	Fuller, Channcey	18, 19, 18 19	w m. ek st V G	f		gentleman	
708	Finch, Hugh	pt 17, 29	s b, 15	f			
912	Foreman, Mrs. Jessie	7, 8	w m st V A	f	5	widow	
913	Foreman, John	25	12	f		gentleman	
689	Garrett, W. A.	10	s b	f	5	merchant	
639	Gunning, James	18	n b	t	6		
635	Hodgson, William	pt 17	n b	f			
564	Ironsides, Alfred	s hf 29	13	f			
925	Jermyn, Mrs. E.	w hf 6	w q st V G	f	5	widow	
662	Keith, Robt.	w hf 29	n b	f	9	farmer	
661	Keith, George S.	w hf 29	n b	f	5	farmer	
884	Levitt, John	1, 2, pt 3	e q st V G	f		baggage man	
587	Langford, Mrs. Ann	s w pt 29	15	f	5	widow	
649	Lawton, Robert	pt 25	n b	f	5	farmer	
584	Langford, Samuel	s hf 27	15	f			
588	Langford, George	pt 29	15	f			
535	Langford, Mrs. A	30	11	f	5	widow	
909	Lankin, James	1	w m st V A	f		laborer	
917	Leslie, James	8, 9	e m st V A	f		laborer	

## TOWNSHIP OF BIDDULPH

37

Jurors	No.	NAME	No. of Lot	Con. or St.	Description of Voter	P.	Occupation
	on Roll						
	660	Mossey, Joseph	e pt 28	n b	f		9
	906	McBride, Henry	1	w m st V A	f		
	719	McLaughlin, Letitia	22	s b	f	9	widow
	838	Murray, Mrs. Matthew	pt 6	w m st V G	f	5	widow
	534	Patterson, William	31	11	f	5	farmer
	874	Parke, Mrs. James	16	e m st V G	f	5	widow
	928	Patterson, Alfred	31	11	f		
	929	Patterson, Clement	31	11	f		
	552	Rathburn, Ezra	29	12	f		
	910	Radcliffe, Mrs. Margaret	5, 6	w m st V A	f	5	widow
	640	Raycraft, R.	pt 1 <sup>A</sup>	n b	f		
	831	Richards, William	3	w m st V G	f		
	856	Stewart, Mrs. Marion	pt 23	12	f	5	widow
	868	Stewart, W. B.	8	e m st V G	f		harnessmaker
	669	Wilson, Mrs. Sarah	pt 30	n b	f	9	widow
	559	Wilson, Mrs. E.	27	13	f	5	widow
	882	Wood, Benjamin	2, pt 3	w q st V G	f		farmer
	840	Webb, C. M. sr.	7, o p	w m st V G	f		merchant
	703	Westman, Henry	e hf 16	s b	f		
	693	Walden, George	s e pt 11	s b	f	5	farmer
	554	Wass, Mrs. Noah	pt 24	13	f	5	widow
	921	Waddell, Mrs. Elizabeth	8, 9	e m st V A	t	5	widow

Jurors	No. on Roll	NAME	No. of Lot	Con. or St.	Description of Voter	P. O.	Occupation
	887	Butler, R. H.	1	w q	st V G	m f	5 laborer
	525	Carroll, John	23	11		m f	5 laborer
	841	Foster, W. V.	7	w m	st V G	m f	5 clerk
	<del>884</del>	<del>Foster, P. J.</del>	<del>14</del>	<del>e m</del>	<del>st V G</del>	<del>m f</del>	<del>5 clerk</del>
	547	Gowan, William	pt 3, 4	e q	st V G	m f	5 laborer
	858	Jermyn, G. S.	pt 8	w q	st V G	m f	5 student
	<del>896</del>	<del>John, John</del>	<del>pt 1</del>	<del>w q</del>	<del>st V G</del>	<del>m f</del>	<del>5 blacksmith</del>
	920	Langford, W. E.	5, 6	w m	st V A	m f	5 laborer
	716	Morfit, John	20	s h		m f	9 farmer
	836	Mossip, H. B.	5	w m	st V G	m f	5 druggist
	844	Wreford, Charles	pt 2	e m	st V G	m f	5 tailor
	845	Wreford, Henry	pt 2	e m	st V G	m f	5 tailor

I, W. D. Stanley, Clerk of the Municipality of the Township of Biddulph, in the County of Middlesex, do hereby certify that Parts One and Three (1 and 3) of the within Voters' List for the year 1898 constitute a correct list of all persons appearing by the last Revised Assessment Roll of the said Municipality to be entitled to vote at Elections for Members of the Legislative Assembly; and that parts One and Two (1 and 2) constitute a correct list for the same year of all persons appearing by the said Roll to be entitled to vote at Municipal Elections in the said Municipality. And I also certify that the aggregate number of names of persons on the said list who are qualified to serve as Jurors, is three hundred and sixty-one (361). And I hereby call upon all electors to examine the said list, and if any omission or other errors are perceived therein, to take immediate proceedings to have the said errors corrected according to law.

Dated at my office this 4th day of July, 1898.

This said list was first posted up in my office on the 1st day of August, 1898.

W. D. STANLEY,  
Clerk Township of Biddulph, Granton, Ont.

21 CANTON BIDDULPH V54 DE

Occupation

Legis-

laborer

laborer

clerk

clerk

laborer

student

smith

laborer

farmer

suggist

tailor

tailor

n the  
of the  
earing  
rote at  
Two  
e said  
And I  
o are  
y call  
e per-  
oord.

, Ont.

Q. CAYTON, D. Q. 18 V 54 - O.E.S.

