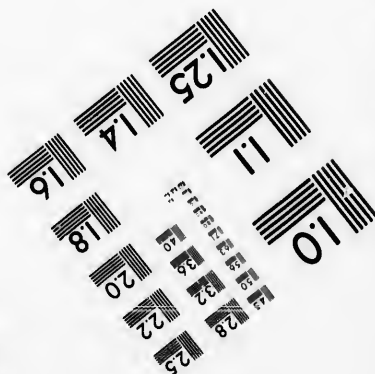
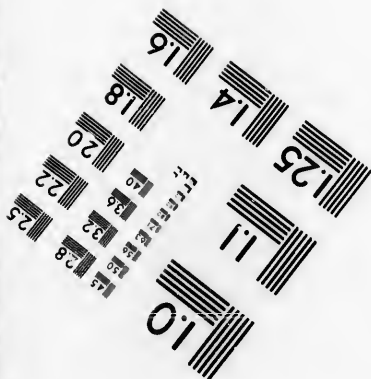
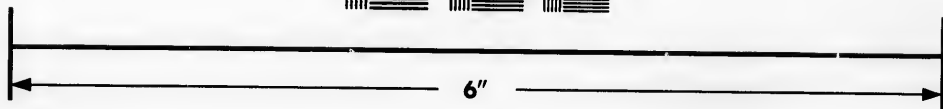
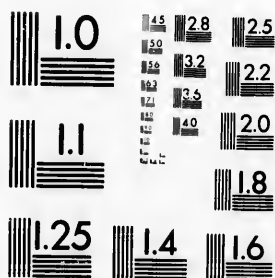


**IMAGE EVALUATION
TEST TARGET (MT-3)**



**Photographic
Sciences
Corporation**

23 WEST MAIN STREET
WEBSTER, N. Y. 14580
(716) 872-4503



**CIHM
Microfiche
Series
(Monographs)**

**ICMH
Collection de
microfiches
(monographies)**



Canadian Institute for Historical Microreproductions / Institut canadien de microreproductions historiques



© 1992

Technical and Bibliographic Notes / Notes techniques et bibliographiques

The Institute has attempted to obtain the best original copy available for filming. Features of this copy which may be bibliographically unique, which may alter any of the images in the reproduction, or which may significantly change the usual method of filming, are checked below.

L'Institut a microfilmé le meilleur exemplaire qu'il lui a été possible de se procurer. Les détails de cet exemplaire qui sont peut-être uniques du point de vue bibliographique, qui peuvent modifier une image reproduite, ou qui peuvent exiger une modification dans la méthode normale de filmage sont indiqués ci-dessous.

Coloured covers/
Couverture de couleur

Covers damaged/
Couverture endommagée

Covers restored and/or laminated/
Couverture restaurée et/ou pelliculée

Cover title missing/
Le titre de couverture manque

Coloured maps/
Cartes géographiques en couleur

Coloured ink (i.e. other than blue or black)/
Encre de couleur (i.e. autre que bleue ou noire)

Coloured plates and/or illustrations/
Planches et/ou illustrations en couleur

Bound with other material/
Relié avec d'autres documents

Tight binding may cause shadows or distortion along interior margin/
La reliure serrée peut causer de l'ombre ou de la distorsion le long de la marge intérieure

Blank leaves added during restoration may appear within the text. Whenever possible, these have been omitted from filming/
Il se peut que certaines pages blanches ajoutées lors d'une restauration apparaissent dans le texte, mais, lorsque cela était possible, ces pages n'ont pas été filmées.

Additional comments:/
Commentaires supplémentaires:

Coloured pages/
Pages de couleur

Pages damaged/
Pages endommagées

Pages restored and/or laminated/
Pages restaurées et/ou pelliculées

Pages discoloured, stained or foxed/
Pages décolorées, tachetées ou piquées

Pages detached/
Pages détachées

Showthrough/
Transparence

Quality of print varies/
Qualité inégale de l'impression

Continuous pagination/
Pagination continue

Includes index(es)/
Comprend un (des) index

Title on header taken from:/
Le titre de l'en-tête provient:

Title page of issue/
Page de titre de la livraison

Caption of issue/
Titre de départ de la livraison

Masthead/
Générique (périodiques) de la livraison

This item is filmed at the reduction ratio checked below/
Ce document est filmé au taux de réduction indiqué ci-dessous.

10X	14X	18X	22X	26X	30X
<input type="checkbox"/>	<input type="checkbox"/>	<input type="checkbox"/>	<input type="checkbox"/>	<input checked="" type="checkbox"/>	<input type="checkbox"/>
12X	16X	20X	24X	28X	32X

The copy filmed here has been reproduced thanks to the generosity of:

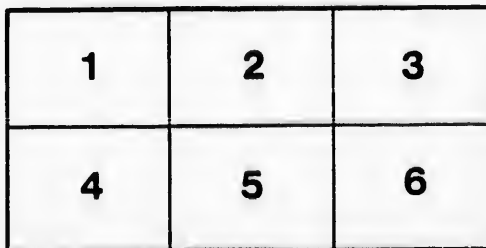
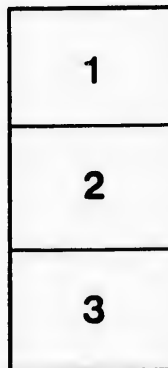
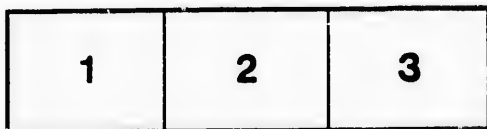
D.B. Weldon Library,
Regional History Room,
University of Western Ontario.

The images appearing here are the best quality possible considering the condition and legibility of the original copy and in keeping with the filming contract specifications.

Original copies in printed paper covers are filmed beginning with the front cover and ending on the last page with a printed or illustrated impression, or the back cover when appropriate. All other original copies are filmed beginning on the first page with a printed or illustrated impression, and ending on the last page with a printed or illustrated impression.

The last recorded frame on each microfiche shall contain the symbol \rightarrow (meaning "CONTINUED"), or the symbol ∇ (meaning "END"), whichever applies.

Maps, plates, charts, etc., may be filmed at different reduction ratios. Those too large to be entirely included in one exposure are filmed beginning in the upper left hand corner, left to right and top to bottom, as many frames as required. The following diagrams illustrate the method:



L'exemplaire filmé fut reproduit grâce à la générosité de:

D.B. Weldon Library,
Regional History Room,
University of Western Ontario.

Les images suivantes ont été reproduites avec le plus grand soin, compte tenu de la condition et de la netteté de l'exemplaire filmé, et en conformité avec les conditions du contrat de filmage.

Les exemplaires originaux dont la couverture en papier est imprimée sont filmés en commençant par le premier plat et en terminant soit par la dernière page qui comporte une empreinte d'impression ou d'illustration, soit par le second plat, selon le cas. Tous les autres exemplaires originaux sont filmés en commençant par la première page qui comporte une empreinte d'impression ou d'illustration et en terminant par la dernière page qui comporte une telle empreinte.

Un des symboles suivants apparaîtra sur la dernière image de chaque microfiche, selon le cas: le symbole \rightarrow signifie "A SUIVRE", le symbole ∇ signifie "FIN".

Les cartes, planches, tableaux, etc., peuvent être filmés à des taux de réduction différents. Lorsque le document est trop grand pour être reproduit en un seul cliché, il est filmé à partir de l'angle supérieur gauche, de gauche à droite, et de haut en bas, en prenant le nombre d'images nécessaire. Les diagrammes suivants illustrent la méthode.

QUESTIONS sent to

of

at

Post Office, to which replies are requested by the Joint Committee of the Legislative Council and Assembly of Canada, appointed to inquire and report what measures can be adopted for the advancement of Agriculture in the Province.

QUEBEC, 1st June, 1864.

QUESTION I.

Can you make any suggestions, calculated to promote the interests of Agriculture, for extending or changing the functions of the Bureau of Agriculture?

- 1.—Could the Bureau be made serviceable in the importation of seeds from foreign countries, and in their distribution over the Province?
- 2.—Could it be made serviceable in inducing experiments advantageous to the agricultural interest, and in recording and communicating to the public the results of such experiments?
- 3.—Could it be made serviceable by obtaining from month to month returns of the state of the crops, and annual returns of the farm products of the Province, and by communicating these and other valuable statistics officially to the public?
- 4.—Could it be made serviceable by offering premiums for essays on special subjects on which reliable information may be needed, or towards which it may be deemed desirable to direct the public mind?

QUESTION II.

Can you make any suggestions calculated to secure reliable Agricultural Statistics annually throughout the Province?

- 1.—Could the Municipal assessors obtain such reliable statistical returns, while going their annual rounds in their several Municipalities?
- 2.—Would the assessors require additional payment beyond the amounts now paid them for the discharge of their ordinary duties?—and if so, what would be the probable extra cost of taking up annually such Agricultural Statistics in your Municipality?
- 3.—If you think the ordinary Municipal machinery unfitted for securing the end in view—can you suggest any other?

QUESTION III.

Can you suggest any measures that can be adopted by the Legislature or Government of the Province, for promoting a general system of drainage?

- 1.—Are there portions of your Municipality unsettled from the want of general drains? and if so, to what extent?
- 2.—Are there portions of the settled land in your Municipality untilled from the want of general drains? and if so, to what extent?
- 3.—Are there portions of the tilled land in your Municipality, the productiveness of which is seriously affected by the want of general drains? and if so, to what extent?
- 4.—Has the existing system of drainage under local authority been made available in your Municipality? and if so, to what extent?
- 5.—Can you make any suggestions for rendering the existing system more effective or more acceptable to the people?
- 6.—Can you suggest a more effective system for securing general drainage throughout the Country than that which now exists?
- 7.—Has tile drainage by individual proprietors been introduced into your Municipality? and if so, to what extent? What has been the cost per acre? What has been the effect on the crops? Have the cash returns compensated for the outlay?

QUESTION IV.

Do you think the time has arrived when a Special Provincial Tax should be imposed on Non-Resident Wild Lands, so as to promote their Early Settlement and Cultivation?

- 1.—How many acres of non-resident wild land are there in your Municipality?
- 2.—How many acres of resident wild land are there in your Municipality?
- 3.—How many acres of cultivated land are there in your Municipality?
- 4.—At what average value are the non-resident wild lands in your Municipality assessed?—and what is the average rate of assessment per dollar for all purposes?
- 5.—At what average value are the resident wild lands assessed?
- 6.—At what average value are the cultivated lands assessed—and what is the average rate per dollar of assessment for all purposes?
- 7.—Do the non-resident wild lands in your Municipality exercise an injurious influence on its progress?—and if so, in what manner and to what extent?
- 8.—What amount, if any, of special Provincial taxation per acre or per dollar on the valuation, on non-resident wild lands, would be just to the owners, and yet tend to the early settlement of such lands?

QUESTION V.

Can measures be adopted to induce such a change in the Husbandry of the Country as would increase the fertility of the soil and largely augment the farm products of Canada?

- 1.—What proportion of the cultivated land in your Municipality is usually devoted to hay and pasture?
- 2.—What proportion of it is usually devoted to wheat?—and how many bushels of wheat per acre are usually obtained?
- 3.—What proportion of it is usually devoted to other grain crops?
- 4.—What proportion of it is usually devoted to potatoes, turnips, carrots and mangold-wurzel?
- 5.—Has the average product per acre of grain in your Municipality increased or diminished during the past five or ten years?—and if so, to what do you ascribe this increase or diminution?
- 6.—Is there much land in your Municipality that has ceased to yield as large crops as in former years?—and if so, how much?
- 7.—Is there much land in your Municipality that has become so exhausted as to render its cultivation unprofitable?—and if so, from what cause has this exhaustion arisen?
- 8.—Do your farmers adopt any systematic rotation of crops?—and if so, what rotation?
- 9.—What quantity of live stock would you say is kept on an average for one hundred acres of cleared land in your Municipality?
- 10.—Would an increase of the live stock tend to increase the fertility of the soil and augment the value of the annual farm products?
- 11.—Is Plaster (Gypsum) much used as a fertilizer in your Municipality?—and has its application been found profitable?
- 12.—Is Lime much used as a fertilizer in your Municipality?—and has its application been found profitable?
- 13.—Are Bones much used as a fertilizer in your Municipality?—and have their application been found profitable?
- 14.—Has Superphosphate been much used in your Municipality?—and has its application been found profitable?
- 15.—Has Guano been much used in your Municipality?—and has its application been found profitable?
- 16.—Have leached and unleached ashes been used in your Municipality?—and has their application been found profitable?

QUESTION VI.

Would the extension of Dairy-Farming more generally throughout the Province, and the Improvement of the existing system, tend to increase the Fertility of the Soil, and the profits of the Farmer?

- 1.—What number of milch cows are there in your Municipality?
- 2.—Have you many farms systematically conducted with a view to the production of butter and cheese?—and what number of cows is usually kept on such farms?

3.—Are butter and cheese manufactured in your Municipality beyond the consumption of the people residing in it? and if so, to what extent?

4.—What quantity of pasture land is usually thought to be required in your Municipality for the feed of a cow during the summer months? What quantities of Hay, Straw, Grain and Roots are usually thought to be required for each cow during the winter months? and what is the average value in your Municipality of the whole year's feed?

5.—What number of Imperial gallons of milk is obtained annually, from a good ordinary cow, in your Municipality? What weight of good cheese would that quantity of milk produce, if all made into cheese? What weight of butter would that quantity of milk produce, if all made into butter?

6.—What is the average wholesale price of good cheese in your Municipality? What is the average wholesale price of butter?

7.—Are there any Dairy-Farmers in your Municipality who keep their cows within doors throughout the year, and carry the green feed from the fields to the barn?—and if so, how is this system found to answer?

8.—Is there a cheese factory in your Municipality, the farmers carrying their milk night and morning to the factory to be made into cheese?—and if so, will you please state what success has attended its operations?

9.—If a Cheese Factory were established in your Municipality by competent parties prepared to pay a fair price, in cash, for all the milk brought to their place throughout the season, would many farmers be induced to go extensively into the business? And if so, what would be a fair remunerative price for the milk, per Imperial gallon?

10.—If a cheese factory were established in your Municipality by competent parties, agreeing to manufacture all the milk brought them into cheese of the best quality, for one cent, or one and a quarter cents per lb. of cheese, would that induce many farmers to go extensively into the business?

11.—What breed of cattle is in highest esteem in your Municipality for dairy purposes?

QUESTION VII.

Would the extension of sheep-farming, more generally throughout the Province, tend to increase the fertility of the soil and the profits of the Farmer?

1.—What number of sheep is there in your Municipality?

2.—Have you many Farmers who make sheep-raising the chief feature of their operations? What is the extent of the largest flocks kept in your Municipality?

3.—Into what sized divisions are such flocks usually put; for summer and winter respectively?

4.—Are sheep usually kept under cover in your Municipality during winter? What is their usual winter food? How many sheep are usually allowed to an acre of ordinary pasture during the summer months?—and at what value per head do you estimate the keep of an ordinary flock of sheep throughout the year?

5.—What weight of wool is usually clipped from Shearlings in your Municipality? What from older sheep.

6.—What breed of sheep stands in highest repute in your Municipality?—and for what reason has it the preference?

QUESTION VIII.

Are the Soil and Climate of Canada well adapted to the growth of Flax? and would its extensive cultivation tend to the advantage of the Farming interest?

1.—Has Flax been cultivated to any extent in your Municipality? Have many Farmers engaged in its cultivation? To what extent have they grown it? Have they grown it for the seed, or for the fibre, or for both? Have they found it profitable? How much does this crop usually yield per acre?

2.—What kind of soil has been found best adapted for raising Flax? What is the average cost per acre in raising it? Does it require much skill or experience to raise it? Is it a precarious crop? Does it suffer from extreme heat or cold? Is it an exhausting crop?

3.—If Oil Mills and Scutching Mills were established in your Municipality by responsible persons, so as to secure to the Farmer a fair cash price for the article, would Flax be much more extensively cultivated in your Municipality than at present?

QUESTION IX.

Would the interests of Agriculture be generally promoted were a sum of public money applied to the importation of thorough-bred domestic animals, to be sold for cash at public auction, under condition of their retention in Canada for a certain number of years?

1.—How many thorough-bred Cows and Heifers are there in your Municipality?—and of what breeds?

- 2.—How many thorough-bred Bulls, and of what breeds?
- 3.—How many thorough-bred Mares, and of what breeds?
- 4.—How many thorough-bred Stallions, and of what breeds?
- 5.—How many thorough-bred Leicester Sheep?
- 6.—How many thorough-bred South Down Sheep?
- 7.—How many thorough-bred Cotswold Sheep?
- 8.—How many thorough-bred Merino Sheep?
- 9.—How many thorough-bred Sows, and of what breeds?
- 10.—How many thorough-bred Boars, and of what breeds?
- 11.—Has it been found as the almost certain result of a first cross between a thorough-bred male domestic animal and a native female that the progeny are greatly improved in quality and value, arrive sooner at maturity, and fatten easier?
- 12.—Would not the annual profits of farming in Canada be greatly increased were the Domestic Animals on our farms of an improved class? Would not the increased remuneration from Stock-raising induce a larger quantity to be kept? And would not the quantity of manure thereby obtained enable larger crops of Grain to be raised and the fertility of the soil to be maintained?
- 13.—Would not a vigorous movement to raise the character of the Domestic Animals on our farms, if successful, have a most salutary effect on every branch of farming industry in Canada?
- 14.—Would the appropriation of a sum of Public Money—say \$100,000 to \$200,000—to be placed in the hands of Commissioners for the purchase, in other countries, and the importation into Canada of first-class thorough-bred Stock, be attended with very desirable results? The animals on arrival to be sold for cash to the highest bidder, under bonds to be kept in the Province for certain number of years, and the money so obtained to be applied and re-applied in the same manner, to the purchase and importation of more stock, until the money was exhausted?
- 15.—Can you suggest any other mode of instituting a general and effective movement for the improvement of the Farm Stock of Canada?

QUESTION X.

Could the Prizo System of the Provincial, County and Township Agricultural Societies be amended and improved?

- 1.—Is it better to offer a large number of small prizes than a smaller number of large ones?
- 2.—Would it have a beneficial effect if large sums (such as in the instance of the Canada Company's Prize, or more) were offered for the best 25 or 50, or even 100 bushels of our chief staple farm products, under the condition that the Provincial Association should retain, at a full rate, all the samples offered for competition, and offer them for sale by public auction for seed?
- 3.—Would Premiums for the best managed Farms exercise a beneficial influence?

QUESTION XI.

Would Model Farms, where Agricultural and Veterinary instruction could be obtained, and where the best modes of Agriculture, and the best breeds of Stock could be seen, and where needful Agricultural experiments could be conducted, be so sustained as to render them of public advantage?

QUESTION XII.

Can you suggest any other direction in which the Government and Legislature of the Province can lend their aid towards the advancement of Agriculture in the Province.

By order of the Joint Committee,

GEORGE BROWN,
Chairman.

Answers to the foregoing queries to be addressed to the "Chairman of the Joint Committee on the Advancement of Agriculture, Quebec."

