

T. EATON CO. LIMITED
190 Yonge St. Canada's Greatest Store. Toronto.
Store Closes to-day at 5 o'clock.

A Busy August!
No room here for dull days. We're not standing still by any means but forging ahead—learning your wants and needs better.

Immense Variety
Here in all the stocks. Nothing pinched—nothing overlooked. We have what travellers want, what hotel-keepers want, what housekeepers want, what everybody wants.

Furniture Sale!
Of course you're interested. Every man and woman in Canada enjoys the good things of life, and a cosy, comfortable home ranks first in interest.

- Bedroom Suite, solid oak, well-finished, large square three-drawer bureau, wash table, bedstead, 6 feet high, 4 feet 2 inches wide. Regular price \$16.00, sale price \$13.95.
Dining Room Chairs, solid oak, high fancy carved back, turned spindles, extra well made. Regular price \$1.50, sale price \$1.00.
Bedroom Suite, solid oak, heavily carved, oval bureau, 18 x 36 inch level plate mirror, large bedstead and washstand. Sale price \$16.75.
Women's Wire Spring Mattress, double weave, with 4 copper wire spring supports. Regular price \$1.75, sale price \$1.25.
Mixed Mattress, double size, good horse ticks, wool both sides. Sale price \$2.25.
Feather Pillows, covered with linen ticking, size 21 x 27 inches, mixed goose and duck feathers. Regular price \$2.50 a pair, sale price \$1.90.
Sideboards, solid oak, strongly made, well finished, 48 inches wide, with bevel plate mirror, size 14 x 24 inches. Regular price \$14.50, August sale price \$10.75.
Sideboard, solid oak, polished, hand-carved and fluted pillars, 78 inches high, 50 inches wide, 32 inches deep, fancy shaped top, 18 x 28 inch level plate mirror. Regular price \$22.75, sale price \$17.50.
Extension Tables, solid oak, polished, 6 fancy turned legs, 4 leaves, extend to 8 feet long. Regular price \$10, August sale price \$6.75.
Large Arm Chairs, to match. Regular price \$2.25, sale price \$1.65.

T. EATON CO. LIMITED
190 YONGE ST., TORONTO.

THE TORONTO WORLD
ONE CENT MORNING PAPER.
NO. 33 YONGE STREET, TORONTO.
Branch Office: No. 18 Arcade, Hamilton.

THE OUTLOOK.
The citizen of Toronto is to-day in a more hopeful mood than he has been at any time during the past seven or eight years. We do not say that the boom days have returned. We do not say positively that they are returning. What we do say is that there is a general feeling among the people of a more decided confidence in the future of the Dominion.

OUR NEIGHBORS CANNOT SEE DAYLIGHT
The situation on the other side is thus described by Henry Clay, who has been a resident in the city of Wall-street. He says: "There is still some difference of opinion as to the outcome of the election, and political conditions vary from day to day with the facility of the market."

HAPPENINGS OF A DAY.
Items of Passing Interest Gathered in and Around this Busy City.
Norris Bros' famous dogs and ponies arrived in the city yesterday morning. The circus will be at the Grand Hotel only 14 patients in the wards. Of this number, 10 were diphtheria and 2 of scarlatina.

THE WORLD AND THE AQUEDUCT.
An evening contemporary makes the statement that The World, after having bitterly and contemptuously opposed the aqueduct project, has now become converted to the scheme. The journal in question will search our files in vain for any criticism hostile to the idea of generating electricity from the water power running to waste in the Humber Valley.

Guinane Brothers' Guinane Brothers
214 Yonge Street.
NOW GIRLS' SHOES
It's your turn to be surprised. We have always been good to you—but there's a better and best to match every good.

YOUR SHOES
must needs be neat, light, natty and strong, with the dash of style that is always welcome—WHAT GIRL DOES NOT LOVE STYLE?
14,000 Pairs of Girls' Shoes,
Sizes 11 to 2.
go on sale to-morrow at 55 cents a pair. These are the same shoes that many of you girls have looked at and longed for during the early summer—with this difference, they were sold at \$1.25 before we decided to Dissolve Partnership and Discontinue Business at 214 Yonge Street.

GUINANE BROTHERS
LAST MONTH AT
214 Yonge Street.
The Celebrated Girdle Waxed "Slator Shoe" can be purchased only at 89 King Street West—it is the best shoe in the world.

THE IMPERIAL GOLD MINING COMPANY, LTD.
ROSSLAND, BRITISH COLUMBIA.
CAPITAL \$1,000,000.
Shares are fully paid and non-assessable, 250,000 of which are held as treasury stock.

CLARE BROS. & CO.
PRESTON, ONT.
We make a SPECIALTY OF HEATING
by warm air or combination (warm air and hot water), and send free catalogue, estimates and specification upon application.

Personal.
A. E. Nichols of London is in the city.
Mrs. J. H. Wilson of London spent Sunday in the city.
W. G. Wignate of Hamilton was in the city yesterday.

It Hurts
nothing that can be washed or cleaned—Pearline. The purest soap is no safer—the poorest soap is no cheaper. It is more effective than the strongest—it is more convenient than the best. Pearline saves labor and wear in washing clothes or cleaning house. A few cents will let you try it; common sense will make you use it.

THE GREAT GORGE ROUTE.
Niagara's Short Route—Lawson to Niagara Falls—through the historic gorge at water's edge.

NIAGARA FALLS LINE
DOUBLE TRIPS
EMPRESS OF INDIA and G.T.R.
Daily from Young's Street Wharf at 7.45 a.m. and 2.30 p.m. for St. Catharines, Buffalo, Buffalo, N. York and all points east.

HAMILTON STEAMBOAT CO.
SPECIAL EXCURSIONS
SATURDAY AND WEDNESDAY AFTERNOONS
Return 50 Cents.
The large Steamer Modjoko now takes these trips on with a schedule of 2000 to 2500 passengers.

STR. QUEEN CITY
city wharf, Yonge-street.
Daily at 9 a.m.
Saturday 2 p.m. Grimsby Fall only. Six hours in Grimsby Fall, three hours at Burlington Beach—return 50c.

NIAGARA NAVIGATION COMPANY
BOOK TICKETS
ON SALE
A. F. WEBSTER
N. E. Corner King and Yonge-streets.

NIAGARA RIVER LINE
Niagara Navigation Co.
4 TRIPS DAILY (Except Sunday), on after MONDAY, JUNE 8th.

WHITE STAR LINE.
NEW YORK TO LIVERPOOL—CALLING AT QUEENSTOWN.
S. S. Germanic, August 5th, noon.
S. S. Teutonic, " 12th, "
S. S. Britannic, " 25th, "

Indapo
Made a well Man of Me!
INDAPO THE GREAT HINDOO REMEDY
RESULTS IN 30 DAYS. Cure all skin diseases, itching, eruptions, pimples, etc.

It Hurts
nothing that can be washed or cleaned—Pearline. The purest soap is no safer—the poorest soap is no cheaper. It is more effective than the strongest—it is more convenient than the best. Pearline saves labor and wear in washing clothes or cleaning house. A few cents will let you try it; common sense will make you use it.

EXCURSIONS!
Return to Toronto, August 30, 1896.
PERSIA AND OCEAN
Tuesday, Saturday, and Monday, return, \$14, meals and berths included.

RICHELIEU & ONTARIO STEAMERS
daily, except Sunday, 9 a.m., 1000 Islands, Montreal, Quebec, Saginaw.
Berths Reserved Through.
BARLOW CUMBERLAND,
Agent, 78 Yonge-street, Toronto.

NIAGARA FALLS PARK & RIVER RAILWAY
The Best Electric Railway in the World.
Queenston to Chippewa, along the Niagara Gorge, Victoria Park and past the Falls and Rapids, connecting at one end with steamers for Toronto, and at the other with steamers for Buffalo.

STR. LAKE SIDE
Daily from Young's Street wharf (east side) at 3.40 p.m., for ST. CATHARINES, Niagara Falls, Hamilton, and Toronto, via Port Hope and the Welland Division.
Prospect Park, Oshawa.
STR. A. J. TYMON
Will leave Young's Street wharf (east side) Saturday, August 1, at 7.30 a.m.

Beaver Line to Europe
Leave Montreal.
Lake Ontario, July 15, daylight.
Huron, " 22, "
Superior, " 29, "
Washington, August 11th, to all good ports on the Atlantic.

QUEBEC STEAMSHIP CO.
Summer Cruises in Cool Waters.
River and Gulf of St. Lawrence.
The Iron Twin-screw steamer CAMPANA, with all modern accommodations, is leaving Montreal at 2 p.m. on Monday, Aug. 11th, 31st, Sept. 14th, for Pictou, N.S., St. John's, Halifax, St. Peter's, St. John's, and New York.

CANADIAN PACIFIC RY.
TORONTO CIVIC HOLIDAY
Will Issue Round Trip Tickets to ALL STATIONS IN CANADA
Single First-Class Fare
Good going P.M. Trains AUGUST 9 and 10.
Good for return until August 11.

DETROIT, Mich.
Annual Excursion
NEWS ATHLETIC ASSOCIATION.
Fare for the Round Trip:
Children half fare. Tickets good going 4.00 p.m. train, August 3; 7.30 a.m. train, August 4; and on special train leaving Union Station 11.00 a.m., August 5. All tickets good for return until August 7, at 11.00 a.m.

GRAND TRUNK RAILWAY SYSTEM
TORONTO TO DETROIT
-- and RETURN
\$4.40
CHOICE OF FOUR TRAINS.
Good going 1 p.m., 2 p.m., 10.30 p.m. Trains AUGUST 3rd and 4th, and 9.5 a.m., AUGUST 4th.
Valid for return on or before AUGUST 7th.
Full information at City Ticket Office 1 King-street East.

TRAFFIC DIRECTIONS!

Rate \$1.50... D OCEAN... MARIO STEAMERS... UMBERLAND... CHICORA... KEYS... & HEALTH... UDAY AFTERNOON... GOLD MINES... KATHARINES... T. TYMON... Europe... New York Lines... ELVILLE... Europe... to Europe



MICHIE'S SUPPLIES

The best of everything in -Provisions -Beverages -Cigars

Price Lists mailed on Application.

MICHIE & CO., 111 and 113 King St. West, 466 and 468 Spadina Ave

WHO IS THIS MAN?

It is supposed to have jumped off a Klondike steamer—Was His Name Schamhorn? ... Stoke's Bay, Ont., Aug. 1.—The man drowned at Stoke's Bay yesterday...

LIVE STOCK EXPORT.

Some Interesting Figures Showing the Condition of Canada's Trade From the Port of Montreal. Montreal, Aug. 2.—(Special.)—The shipments from the port of Montreal...

TO LIBEL THE SULLER.

Colored Cook Spencer Wants Something for Bringing the Marquetaine into Port. Halifax, N.S., Aug. 2.—Whether the barquentine Herbert Fuller will proceed from here to Boston is an open question...

DRYDESSA OR INDIGESTION IS OCCASIONED BY

It's the Way of the World. Chatham Banner. How things do change—Here are the Liberals preparing to displace the Conservatives...

ATTO DRY GOODS ONLY

Half-Day Sensations. Blouse Waists, 50c, 75c, \$1. Parasols, \$2. Washing Machines, 12 1/2c. Silks, 30c, 50c, 75c, \$1.

AT ONE O'CLOCK WE CLOSE MAIL ORDERS to be filled at 8 o'clock Monday Morning. JOHN CATTO & SON, King-st., Opposite the Postoffice.

TEN PETITIONS FILED.

All Against Conservatives Returned For Ontario Constituencies.

HON. WILLIAM PATERSON NOMINATED.

Several Petitions Filed in Quebec-West, Toronto, East York, London, North Ontario, East Northumberland, East Durham, North Bruce, East Simcoe, South Brant and North Perth Attacked in This Province.

The following election petitions were presented on Saturday. In each case the member sought to be unseated is a Conservative. To-day is the last day for entering protests.

W. T. R. Preston (taxpayer) petitions against the return of E. B. Osler and E. P. Clark. The usual grounds are alleged. Messrs. Denton & Dods are the petitioner's agents.

H. R. Frankland, in person, petitions against the return of W. F. Maclean. He demands a scrutiny and claims to have had a majority of the lawful votes, thus reopening the question of the ballot papers, which were marked outside the dice, and he claims the seat. Thomas Parker is agent for the petitioner.

George Fawcings of London, gentleman, petitions against the return of Thomas Denton. He alleges the ordinary allegations, it is asserted that the respondent and his agents were guilty of undue pressure on voters and were parties to the abduction of voters on election day. Messrs. Macbeth & Macpherson of London and Messrs. Moss, Aylesworth & Armour are the agents.

North Ontario. The petitioner is Duncan Graham of the Township of Mara, farmer, who has been elected to the Ontario Legislature and seeks to unseat Major John A. McMillan, and demands a recount and claims the seat. The special charges made are the hire of carriages, the payment of traveling expenses for voters and the hiring of persons who had been employed for reward, and the substitution of fraudulent ballot papers. The agents are H. M. Noble, Cannington, and Kerr, Macdonald, Davidson & Paterson in Toronto.

East Northumberland. Andrew S. Dickson protests against the election of Edward Cochrane. The petitioner's agents are Webb, Hooley & Hunter of the Canada Life Building, Toronto.

East Durham. Edward Allan, of Port Hope, gentleman, petitions against the election of Thomas Dixon Craig. Messrs. Kerr, Macdonald & Co. are the agents.

North Bruce. Richard James Lilliole of the village of Chesley protests the election of Alexander McNeill, through his agents, Messrs. Kerr, Macdonald & Co. East Simcoe. John Pye of the Township of South Orillia petitions against the return of William H. Bennett. The petitioner alleges that many of the voters in his riding were induced to vote by means of a letter to the deputy returning officers were inaccurate. Messrs. McCarthy, Oster & Co are the agent.

South Brant. John Dunn of Brantford is the petitioner and Robert Henry, respondent. Messrs. McCarthy, Oster & Co. are the agents for the petitioner. In alleging that some of the voters gave on a ballot before the opening of the polls, which were to be fraudulently put in the boxes, and that D.R.O.'s in many instances violated the secrecy of the ballot by opening ballot papers.

It is understood that numerous petitions were to be filed by Conservatives on Monday. Eleven petitions in all have now been filed in Ontario, including North Perth on Friday.

Other Protests. Montreal, Aug. 1.—Election protests have been filed in Joliette, L'Assomption, Montreal and Trois Rivieres and St. Maurice. Waterloo, Aug. 1.—The protest which was filed to protest the North Waterloo riding against the election of J. J. Seagrave on Friday is causing a great stir here. Great excitement prevails here now, and the Conservatives claim they will carry the riding with a far greater majority next time.

Halifax, N.S., Aug. 2.—Election protests were filed in Colchester, Victoria and Richmond, Nova Scotia. All were entered by Liberals.

Many in New Brunswick. St. John, N.B., Aug. 2.—Election protests were filed in all the constituencies in New Brunswick except Gloucester and Northumberland.

Owen Sound, Ont., Aug. 1.—A large and representative meeting of the Executive Committee of the New Grey Liberal Association was held here this afternoon. Hon. Wm. Paterson of Great Canada was unanimously nominated of the committee. No other local candidate was mentioned. It was decided to hold a convention here Friday next, at 4 p.m., and have the candidate address and other prominent local Liberals spoke very feelingly of the death of John Clark and in recognition of condolence was carried and ordered to be presented to his widow and family.

They Descend in Clouds on a Bicycle Club and Forced Them to Abandon a Run. Arlington, N.J., Aug. 2.—Mosquitoes routed 35 members of the Arlington Bicycle Club while the riders were on the way last evening to take part in the Wheelmen's convention at Elizabethtown. The wheelmen started from Arlington at 7 o'clock and had got as far as Freehold when they were met by the mosquitoes. They were forced to give up. Several of them were almost blinded by the vicious pests, and when they sturged to Arlington their faces and hands were swollen to almost twice their natural size. The wheelmen say that the mosquitoes came down upon them in thick clouds. The club members had decorated their bicycles with flags and lanterns, and one of the prizes offered by the club.

No for Detroit! To-night at 11 o'clock the special excursion train leaves for Detroit. It will be accepted on the C.P.R. train and will leave at 7:30 o'clock. The tickets are on sale at all stations. Passengers may return on any regular train from Detroit on Friday night.

J. S. says: "I was in a dreadfully weak and nervous condition, unable to get out of bed. I was unable to do any work, and my health was very poor. I was told that Miller's Compound Iron Pills would help me, and I bought a box. I took a few pills, and I was surprised to find that I was getting better. I was able to get out of bed, and I was able to do my work. I was very much pleased with the result, and I would recommend Miller's Compound Iron Pills to all who are suffering from weakness and nervousness."

DAILY SURPRISES



Telling the simple truth is a wise policy at all times. We praise this store because we know it deserves it—you know that. We praise our goods when we know they deserve it—but we never tell all the good points. We prefer that results shall be greater than your anticipations; that what you see will prove to be better than what we claim for it. You like a store of this kind—full of surprises.

SPECIALS IN SUNDRIES FOR TUESDAY.

Forgetting for the moment staple departments, we might easily fill many columns telling of the special departments that find their place, some in one part of the store and again in another part. We might take you to the basement and talk interestingly all day of the variety and character of the goods seen there—so much that it is useful to every housekeeper. Then—a visit to the toilet counters on the main floor is more than interesting, and you are astonished to learn that you can buy jewelry that has the best guarantee; clocks that go, watches that are worthy for you to carry—at prices easily one-half and two-thirds less than these things have sold for. It is a way this great departmental store has of serving in the fullest manner, the interests of Canadian shoppers:

Refrigerators. Clearing out the balance of our Refrigerators: The celebrated Labrador, \$14. for \$10.50; \$17 for \$12.75; \$20 for \$15.50; \$30 for \$21.00. Soap Bargains. Old Honors Turkish Bath, Amber, Glycerine, Japanese Bouquet, Toilet and Honey, all regular toilet soaps. Tuesday, two for \$1.47. A Watch for \$1.47. American Lever Watches, nickel case, fully guaranteed for one year against wind and patent set, worth \$2.50. Tuesday \$1.47. Window Screens. Window Screens, size 38, extending to 42 inches, rug, 45c to clear. Tuesday \$1.47.

CHOICE OF THOUSANDS OF YARDS of Canadian Tweeds for Suitings. A big purchase of goods sold by the manufacturer at from 80c to \$1.00. Our price . . . 47 1/2

Picture Gallery. The Picture Gallery on the third floor gives you an opportunity to rest, and at the same time to see many beautiful pictures. It is a pleasant place where you can always spend a pleasant half-hour, and likely some profit in it.

Always think of this store as a delightful spot to visit, a pleasant place to rest and look around, a store where you can lunch at the best lunch parlors in Toronto. If you cannot come to the store remember there is nothing the store sells that you cannot order by mail.

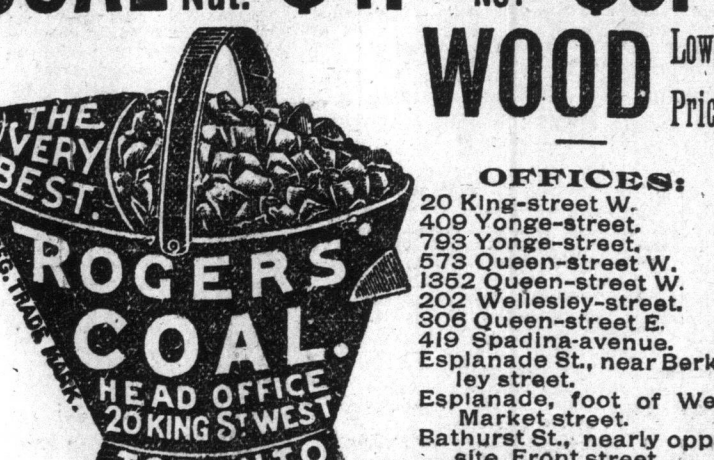
THE ROBERT SIMPSON CO. LTD.

S.W. Corner Yonge and Queen-sts. 178-179-174-176-178 Yonge-street. 1 and 3 Queen-st. West.

COAL AND WOOD.

GRATE EGG STOVE NUT PEA \$4.25 PER TON CONGER COAL CO., LIMITED.

BEST QUALITY No. 2 \$4.25 NUT EGG STOVE \$5.50



ELIAS ROGERS & CO

Blaze at the Falls. Niagara Falls, N.Y., Aug. 2.—Dobbe & Stuart's iron factory was destroyed by fire early this morning. Loss about \$50,000. The fire was caused by a spark from a furnace. A force of 50 men is thrown out of employment. The firm, which came from Thorold, Ont., is a very enterprising one, and had built up a large and profitable business.

AT JAMIESONS Prospectus

49 CENTS BUYS PALO ALTO GOLD MINING CO. OF VICTORIA, B.C. Limited Liability.

75 CENTS BUYS Men's White Duck Vests such as are usually sold for \$1.25 and \$1.50.

99 CENTS BUYS Men's Black Serge Coats such as are regularly sold for \$1.75 and \$2.

15 CENTS BUYS Children's Straw Hats, elegant shapes, ribboned with silk, usually selling for 85, 50 and 60c.

29 CENTS BUYS Boys' Cashmere and Worsted Stockings, double knit at heels and knees, such as are usually sold for 45 cents.

49 CENTS BUYS Men's Blazer Coats such as are usually sold for one dollar elsewhere.

PHILIP JAMIESON

Cor. Yonge and Queen Sts.



DR. W. A. GRAHAM 386 KING-ST. WEST, TORONTO, ONT. Treats Chronic Diseases and Special Attention to Skin Diseases. As Plumped Up, etc. FRUIT DISEASES—Such as Diabetes, Stenosis, Varicose, Nervous Debility, etc. Office hours, 9 a.m. to 3 p.m. Sunday, 1 p.m. to 3 p.m.

BIRD BREAD

Pat. 1891-1896. Reg. 1896. Bird with Cottam's Seed it restores birds that have been given improper food and keeps them in health and song. Sales nearly doubled in last six months.

Do You Wish Your Canary to Be in Song and Beauty?

NICHOLSON & BROCK 81 Colborne-st. TORONTO. Telephone 767.

CURE YOURSELF!

Use Big 6 for Gonorrhoea, Gleet, Stricture, etc. Sold by Pharmacies.

Prospectus

PALO ALTO GOLD MINING CO. OF VICTORIA, B.C. Limited Liability.

CAPITAL - - - \$1,000,000 IN SHARES OF \$1.00 EACH.

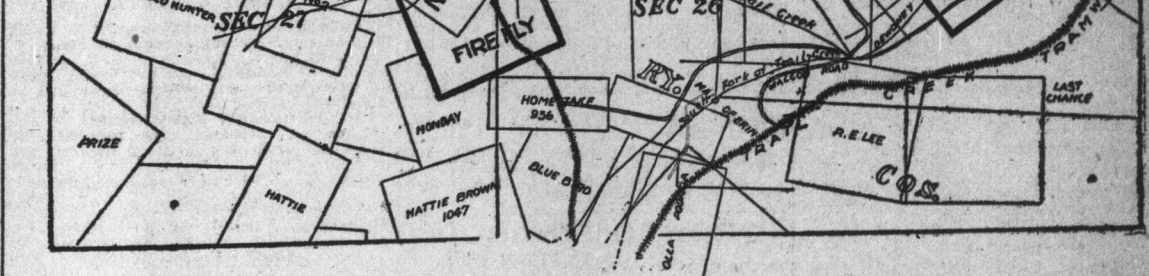
Trustees: The Hon. D. W. Higgins, B. C. Nicholes, W. G. Estep and P. A. O'Farrell. Leonard H. Selly.

ALSO NEST EGG MINING COMPANY LIMITED LIABILITY.

CAPITAL - - - \$500,000 IN SHARES OF \$1.00 EACH.

Head Office, Victoria, B. C. Mines, Trail Creek, W. Kootenay

Trustees: G. A. Kirk, President; A. B. Erskine and P. A. O'Farrell.



The control and management of these well-known mines in the Trail Creek is vested in the leading citizens of British Columbia, Lieut.-Governor Dewdney, the Hon. H. Turner, Premier of British Columbia, R. P. Mitchell, M. L. A., Hon. D. W. Higgins, Speaker of the Provincial Legislature, Capt. John Irving, A. J. McColl, Q.C., E. V. Bowdell, William Wilson, Simon Leiser, C. Holland and other well-known citizens of Victoria. The Nest Egg Mining Company was formed to acquire and operate the famous Nest Egg mine in the Trail Creek of the Province of British Columbia. It is a 100-foot location and covers 40 acres. The mine is worked by the Nest Egg Mining Company, which has three well-defined ledges, all trending in an easterly and westerly direction, like the other features of the camp. The main ledge on the Nest Egg is one of the strongest and best defined ledges of the district, and has been traced from the Sunset and Gold Hunter on the west to the Commander on the east. A shaft that has been sunk for 50 feet on this main ledge, and this shaft is all in ore and ledge matter from top to bottom. On the central vein three shafts have been sunk, and the vein traced for the entire length. The central shaft is 16 feet deep and the ore in this shaft assays from \$7 to \$48 in gold and four per cent copper. The central shaft is down 40 feet, and the clean ore taken out of this shaft averages over \$20 in gold. Number 1 shaft on this vein is about 300 feet east of No. 2 and is down 30 feet, with 9 feet of solid clean ore in the bottom of the shaft that assays \$35 to the ton. The cost of mining, smelting and treatment for this ore averages \$15 so that the Nest Egg is now mining ore that will net it a profit from the \$15 to \$20 a ton. The Nest Egg Company has purchased the adjoining mineral claim, the Fire Fly. The Fire Fly has a fine, strong, well-defined ledge running through the entire claim, and development work is now being done on this ledge. The railroad from the Trail smelter to the Nest Egg mine is a fine, well-defined ledge running through the entire claim, and development work is now being done on this ledge. The company has placed upon the market 50,000 shares of stock in the Nest Egg Mining Company, which are to be sold at 25 cents a share, and the proceeds are to be devoted to the development work on the mine and the purchase of machinery. An additional 50,000 shares will be placed subsequently upon the market at an advanced price should further money be required for the development of the property. These claims were purchased by the Victoria Company on reports made by Col. John M. Burks and W. Clayton Miller. Mr. Miller is an eminent mining engineer. In his report, he says: "After careful examination of the Nest Egg mine and the fine ledge that are exposed on this claim, and the development work that has been done upon the Fire Fly, I believe that the Nest Egg mine should develop into one of the rich mines of Trail Creek." Alto, in which he was personally interested. On his return to Victoria, The Colonist of May 30 published an interview, in which Gov. Dewdney spoke about the Palo Alto as follows: "The Nest Egg, with its great surface showing and mineral ore, with its fine development and with the rich ore in sight, has all the earmarks of a big mine." The universal impression is that the Palo Alto mine is a shaft 30 feet deep, with very fine looking ore upon the dump. I had this ore sampled and assayed at the Trail Creek smelter, and found it to be good shipping ore. About 200 feet west of the main shaft is another about 16 feet deep, and the bottom of this shaft is all in ore. 40 feet further west the vein has been stripped and the cuts made exposed the fine ore. You can see for me that I am more than thoroughly pleased with my inspection of the Palo Alto, and I believe the Victorians have got a very valuable property in this mine. The property is paid for in full, and 100,000 shares of stock are to be sold immediately at 15 cents a share for the development of this mine. Another 100,000 shares is reserved in the treasury, to be afterwards sold as the needs of the company require. These two mining properties, owned and controlled and operated by the leading business men and the best known citizens of the Province of British Columbia, is a fine opportunity for investors in these two mines have great chances of realizing big profits for a small investment. These mines have been recommended and reported on by excellent mining men and by the best mining engineers of the Trail Creek country, and I have an excellent recommendation in these properties as among the safest in that country. For this reason, myself and others have made a contract with the management of the Nest Egg and the Palo Alto companies for the entire treasury stock of both mines, and I cheerfully recommend the purchase of this treasury stock by the investors of Canada who desire to share in the extraordinary rich promise of the Trail Creek mines. It is come to the conclusion that British Columbia, and Trail Creek in particular is about to develop into the greatest gold producer that this continent has ever known, and that Trail Creek is about to develop into the richest gold fields of South Africa. English capitalists have already begun to find out the wealth of this favored region, and they have already begun to buy some of the mines in Trail Creek. When these mines have once fairly started to buy these mines, it is situated in one of the best mineral belts that has ever been known in the world. The Palo Alto, judging it from the work that has been done on the croppings that come to the surface, and the fact that it is situated in one of the best mineral belts that has ever been known in the world, is a mine that is certain to make a good paying mine. The claim lies on low ground, where it would be impossible for it to be a mine, and must be in its original position and a true ledge. The latest assay values in the vein of the Palo Alto are \$48 in gold, and these values were the best ever taken out of any of the veins in the Trail Creek country at this depth. At the end of May, Lieutenant-Governor Dewdney visited Royal Assent made a careful inspection of the Palo Alto mine, and he reported that it was one of the richest mines in the world.

To the Trade: CORSETS. CORSETS. CORSETS. We are now showing three special lines in CORSETS, two low lines and a new number in Thomson's Glove-Fitting, at a popular price.

John Macdonald & Co. Wellington and Front-Sts. East, Toronto. Filling Letter Orders a Specialty.

Crushed Rock Salt. Is much better for Ice Cream Freezing than the common salt.

For the Bowling Tournament. We have just received a stock of TAYLOR & SON, Glasgow.

RICE LEWIS & SON. Corner King and Victoria-streets Toronto.

JOHN STARK & CO. Tel. 880, 26 Toronto-Street.

THE KEITH & FITZSIMONS CO., LTD. Phone 565 - Toronto.

A. E. AMES & CO. (Member Toronto Stock Exchange)

A. E. Webb (Member Toronto Stock Exchange)

OSLER & HAMMOND. 15 King Street West, Toronto.

THE CANADIAN MUTUAL LOAN AND INVESTMENT CO.

DOUGH MIXERS DOUGH BRAKES. G. T. PENDRITH.

WHEAT MARKETS WEAKER.

HIDDEN SKINS AND WOOL. Hides in unchanged, with some quoted at 50c to 70c...

ROSSLAND MINES.

RU. Cochran - 23 Colborne-st. CHICAGO GOSSIP.

FERGUSON & BLAIKIE.

FINANCIAL. The gold in the United States Treasury now amounts to \$119,916,000.

WHEAT MARKETS.

Chicago. Cash. Sept. 57 1/2. St. Louis. 57 1/2. Toledo. 57 1/2.

LOCAL BREADSTUFF MARKETS.

Flour. The market is quiet and prices unchanged.

TORONTO FINANCIAL CORPORATION.

THE FARMERS' MARKETS. Receipts of grain to-day were only two bushels less than yesterday.

GRAIN AND PRODUCE.

Wheat, white, bushel, \$1.07 to \$1.08. HAY AND STRAW.

PROVISIONS AND POULTRY.

HAMS. Beef, forequarters, per lb. 80c to 81c.

BUILDERS' SUPPLIES.

McCabe's Parlor Door Hangers. Aikenhead Hardware Co.

BUSINESS CENTRE TO LEASE.

King-street premises, lately occupied by J. D. King & Co. boots and shoes.

CHICAGO MARKETS.

Henry A. King & Co. report the following fluctuations on the Chicago Board of Trade to-day:

RUSSIAN MARKETS.

Liverpool. 1-Wholesale, 52 1/2 to 54 1/2. 2-Wholesale, 52 1/2 to 54 1/2.

TORONTO'S GREATEST TAILORING STORE.

August 3, 1896, 77 King-St. W. We are determined to do all that we can during this month...

STOCKS, BONDS & DEBENTURES BOUGHT AND SOLD.

JOHN STARK & CO. Tel. 880, 26 Toronto-Street.

Now Later.

THE KEITH & FITZSIMONS CO., LTD. Phone 565 - Toronto.

A. E. AMES & CO. (Member Toronto Stock Exchange)

A. E. Webb (Member Toronto Stock Exchange)

OSLER & HAMMOND. 15 King Street West, Toronto.

THE CANADIAN MUTUAL LOAN AND INVESTMENT CO.

DOUGH MIXERS DOUGH BRAKES. G. T. PENDRITH.

STOCKS, BONDS & DEBENTURES BOUGHT AND SOLD.

JOHN STARK & CO. Tel. 880, 26 Toronto-Street.

ESTABLISHED 1815. ROSS & CO. OF THE BIG THREE GOLD MINING COMPANY.

CAPITAL - \$3,500,000. 3,500,000 Shares of the Par Value of \$1.00 Each.

THE BIG THREE MINERAL CLAIMS.

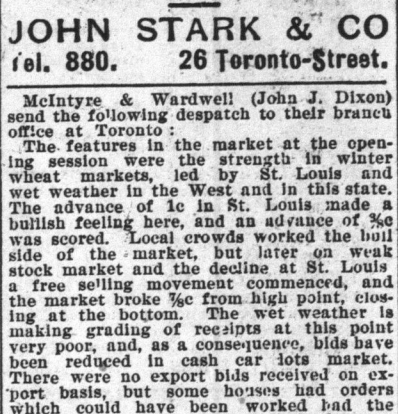
TRAIL CREEK GOLD MINING DISTRICT OF BRITISH COLUMBIA.

OFFICERS: RUFUS H. POPE, M.P., Cookshire, Que. Vice-President.

TRUSTEES: W. A. McDONALD, Spokane, Wash.

THE management of the development work will be conservative and under an able and experienced Mining Engineer.

MAP: SHEWING LOCATIONS OF ELDOORADO, SOUTHERN BELLE AND SNOW SHOE CLAIMS.



TRAIL CREEK MINING DISTRICT. Of all the mining districts in the Great Northwestern Territory none seem to be so full of surprises and none have been more prominently brought before the country...

War Eagle. The War Eagle lies adjoining the Le Roi. This property was purchased by American citizens in October, 1884.

View. This mine lies on the east side of Red Mountain and in same vein as Monte Cristo.

View. This mine lies on the east side of Red Mountain and in same vein as Monte Cristo.

View. This mine lies on the east side of Red Mountain and in same vein as Monte Cristo.

View. This mine lies on the east side of Red Mountain and in same vein as Monte Cristo.

View. This mine lies on the east side of Red Mountain and in same vein as Monte Cristo.

View. This mine lies on the east side of Red Mountain and in same vein as Monte Cristo.

PROSPECTUS OF THE BIG THREE GOLD MINING COMPANY.

CAPITAL - \$3,500,000. 3,500,000 Shares of the Par Value of \$1.00 Each.

THE BIG THREE MINERAL CLAIMS.

TRAIL CREEK GOLD MINING DISTRICT OF BRITISH COLUMBIA.

OFFICERS: RUFUS H. POPE, M.P., Cookshire, Que. Vice-President.

TRUSTEES: W. A. McDONALD, Spokane, Wash.

THE management of the development work will be conservative and under an able and experienced Mining Engineer.

MAP: SHEWING LOCATIONS OF ELDOORADO, SOUTHERN BELLE AND SNOW SHOE CLAIMS.



TRAIL CREEK MINING DISTRICT. Of all the mining districts in the Great Northwestern Territory none seem to be so full of surprises and none have been more prominently brought before the country...

War Eagle. The War Eagle lies adjoining the Le Roi. This property was purchased by American citizens in October, 1884.

View. This mine lies on the east side of Red Mountain and in same vein as Monte Cristo.

View. This mine lies on the east side of Red Mountain and in same vein as Monte Cristo.

View. This mine lies on the east side of Red Mountain and in same vein as Monte Cristo.

View. This mine lies on the east side of Red Mountain and in same vein as Monte Cristo.

View. This mine lies on the east side of Red Mountain and in same vein as Monte Cristo.

View. This mine lies on the east side of Red Mountain and in same vein as Monte Cristo.

PROSPECTUS OF THE BIG THREE GOLD MINING COMPANY.

CAPITAL - \$3,500,000. 3,500,000 Shares of the Par Value of \$1.00 Each.

THE BIG THREE MINERAL CLAIMS.

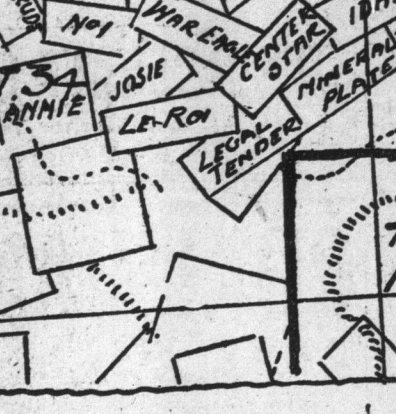
TRAIL CREEK GOLD MINING DISTRICT OF BRITISH COLUMBIA.

OFFICERS: RUFUS H. POPE, M.P., Cookshire, Que. Vice-President.

TRUSTEES: W. A. McDONALD, Spokane, Wash.

THE management of the development work will be conservative and under an able and experienced Mining Engineer.

MAP: SHEWING LOCATIONS OF ELDOORADO, SOUTHERN BELLE AND SNOW SHOE CLAIMS.



TRAIL CREEK MINING DISTRICT. Of all the mining districts in the Great Northwestern Territory none seem to be so full of surprises and none have been more prominently brought before the country...

War Eagle. The War Eagle lies adjoining the Le Roi. This property was purchased by American citizens in October, 1884.

View. This mine lies on the east side of Red Mountain and in same vein as Monte Cristo.

View. This mine lies on the east side of Red Mountain and in same vein as Monte Cristo.

View. This mine lies on the east side of Red Mountain and in same vein as Monte Cristo.

View. This mine lies on the east side of Red Mountain and in same vein as Monte Cristo.

View. This mine lies on the east side of Red Mountain and in same vein as Monte Cristo.

View. This mine lies on the east side of Red Mountain and in same vein as Monte Cristo.

PROSPECTUS OF THE BIG THREE GOLD MINING COMPANY.

CAPITAL - \$3,500,000. 3,500,000 Shares of the Par Value of \$1.00 Each.

THE BIG THREE MINERAL CLAIMS.

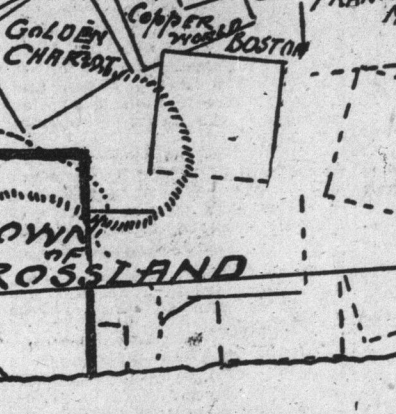
TRAIL CREEK GOLD MINING DISTRICT OF BRITISH COLUMBIA.

OFFICERS: RUFUS H. POPE, M.P., Cookshire, Que. Vice-President.

TRUSTEES: W. A. McDONALD, Spokane, Wash.

THE management of the development work will be conservative and under an able and experienced Mining Engineer.

MAP: SHEWING LOCATIONS OF ELDOORADO, SOUTHERN BELLE AND SNOW SHOE CLAIMS.



TRAIL CREEK MINING DISTRICT. Of all the mining districts in the Great Northwestern Territory none seem to be so full of surprises and none have been more prominently brought before the country...

War Eagle. The War Eagle lies adjoining the Le Roi. This property was purchased by American citizens in October, 1884.

View. This mine lies on the east side of Red Mountain and in same vein as Monte Cristo.

View. This mine lies on the east side of Red Mountain and in same vein as Monte Cristo.

View. This mine lies on the east side of Red Mountain and in same vein as Monte Cristo.

View. This mine lies on the east side of Red Mountain and in same vein as Monte Cristo.

View. This mine lies on the east side of Red Mountain and in same vein as Monte Cristo.

View. This mine lies on the east side of Red Mountain and in same vein as Monte Cristo.

PROSPECTUS OF THE BIG THREE GOLD MINING COMPANY.

CAPITAL - \$3,500,000. 3,500,000 Shares of the Par Value of \$1.00 Each.

THE BIG THREE MINERAL CLAIMS.

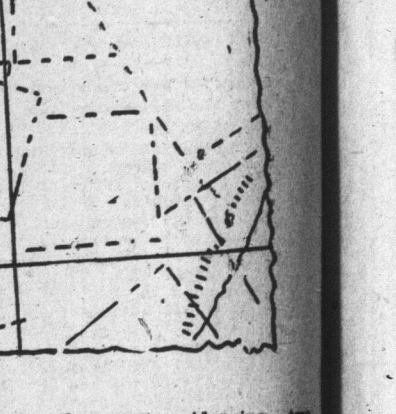
TRAIL CREEK GOLD MINING DISTRICT OF BRITISH COLUMBIA.

OFFICERS: RUFUS H. POPE, M.P., Cookshire, Que. Vice-President.

TRUSTEES: W. A. McDONALD, Spokane, Wash.

THE management of the development work will be conservative and under an able and experienced Mining Engineer.

MAP: SHEWING LOCATIONS OF ELDOORADO, SOUTHERN BELLE AND SNOW SHOE CLAIMS.



TRAIL CREEK MINING DISTRICT. Of all the mining districts in the Great Northwestern Territory none seem to be so full of surprises and none have been more prominently brought before the country...

War Eagle. The War Eagle lies adjoining the Le Roi. This property was purchased by American citizens in October, 1884.

View. This mine lies on the east side of Red Mountain and in same vein as Monte Cristo.

View. This mine lies on the east side of Red Mountain and in same vein as Monte Cristo.

View. This mine lies on the east side of Red Mountain and in same vein as Monte Cristo.

View. This mine lies on the east side of Red Mountain and in same vein as Monte Cristo.

View. This mine lies on the east side of Red Mountain and in same vein as Monte Cristo.

View. This mine lies on the east side of Red Mountain and in same vein as Monte Cristo.