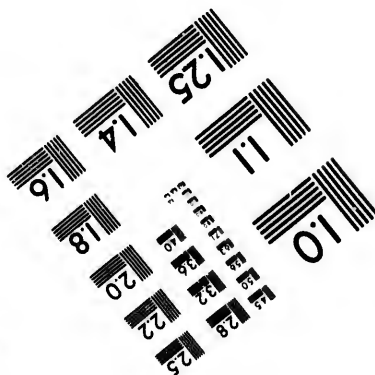
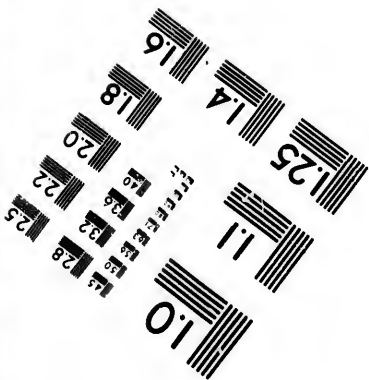
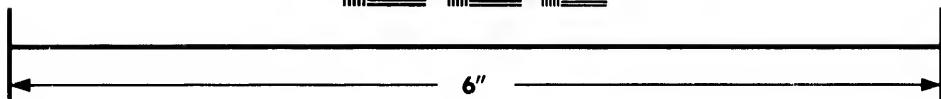
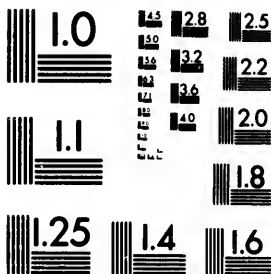


**IMAGE EVALUATION
TEST TARGET (MT-3)**



**Photographic
Sciences
Corporation**

23 WEST MAIN STREET
WEBSTER, N.Y. 14580
(716) 872-4503

**CIHM/ICMH
Microfiche
Series.**

**CIHM/ICMH
Collection de
microfiches.**



Canadian Institute for Historical Microreproductions / Institut canadien de microreproductions historiques

© 1982

Technical and Bibliographic Notes/Notes techniques et bibliographiques

The Institute has attempted to obtain the best original copy available for filming. Features of this copy which may be bibliographically unique, which may alter any of the images in the reproduction, or which may significantly change the usual method of filming, are checked below.

L'Institut a microfilmé le meilleur exemplaire qu'il lui a été possible de se procurer. Les détails de cet exemplaire qui sont peut-être uniques du point de vue bibliographique, qui peuvent modifier une image reproduite, ou qui peuvent exiger une modification dans la méthode normale de filmage sont indiqués ci-dessous.

- Coloured covers/
Couverture de couleur
- Covers damaged/
Couverture endommagée
- Covers restored and/or laminated/
Couverture restaurée et/ou pelliculée
- Cover title missing/
Le titre de couverture manque
- Coloured maps/
Cartes géographiques en couleur
- Coloured ink (i.e. other than blue or black)/
Encre de couleur (i.e. autre que bleue ou noire)
- Coloured plates and/or illustrations/
Planches et/ou illustrations en couleur
- Bound with other material/
Relié avec d'autres documents
- Tight binding may cause shadows or distortion along interior margin/
La reliure serrée peut causer de l'ombre ou de la distorsion le long de la marge intérieure
- Blank leaves added during restoration may appear within the text. Whenever possible, these have been omitted from filming/
Il se peut que certaines pages blanches ajoutées lors d'une restauration apparaissent dans le texte, mais, lorsque cela était possible, ces pages n'ont pas été filmées.
- Additional comments:/
Commentaires supplémentaires:

- Coloured pages/
Pages de couleur
- Pages damaged/
Pages endommagées
- Pages restored and/or laminated/
Pages restaurées et/ou pelliculées
- Pages discoloured, stained or foxed/
Pages décolorées, tachetées ou piquées
- Pages detached/
Pages détachées
- Showthrough/
Transparence
- Quality of print varies/
Qualité inégale de l'impression
- Includes supplementary material/
Comprend du matériel supplémentaire
- Only edition available/
Seule édition disponible
- Pages wholly or partially obscured by errata slips, tissues, etc., have been refilmed to ensure the best possible image/
Les pages totalement ou partiellement obscurcies par un feuillet d'errata, une pelure, etc., ont été filmées à nouveau de façon à obtenir la meilleure image possible.

This item is filmed at the reduction ratio checked below/
Ce document est filmé au taux de réduction indiqué ci-dessous.

10X	14X	18X	22X	26X	30X
<input type="checkbox"/>	<input type="checkbox"/>	<input checked="" type="checkbox"/>	<input type="checkbox"/>	<input type="checkbox"/>	<input type="checkbox"/>
12X	16X	20X	24X	28X	32X

The copy filmed here has been reproduced thanks to the generosity of:

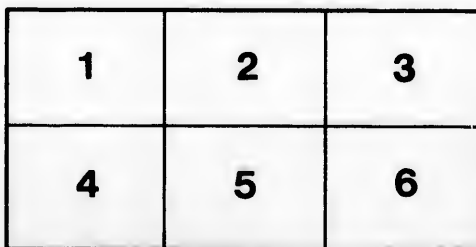
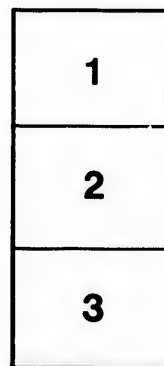
National Library of Canada

The images appearing here are the best quality possible considering the condition and legibility of the original copy and in keeping with the filming contract specifications.

Original copies in printed paper covers are filmed beginning with the front cover and ending on the last page with a printed or illustrated impression, or the back cover when appropriate. All other original copies are filmed beginning on the first page with a printed or illustrated impression, and ending on the last page with a printed or illustrated impression.

The last recorded frame on each microfiche shall contain the symbol \rightarrow (meaning "CONTINUED"), or the symbol ∇ (meaning "END"), whichever applies.

Maps, plates, charts, etc., may be filmed at different reduction ratios. Those too large to be entirely included in one exposure are filmed beginning in the upper left hand corner, left to right and top to bottom, as many frames as required. The following diagrams illustrate the method:



L'exemplaire filmé fut reproduit grâce à la générosité de:

Bibliothèque nationale du Canada

Les images suivantes ont été reproduites avec le plus grand soin, compte tenu de la condition et de la netteté de l'exemplaire filmé, et en conformité avec les conditions du contrat de filmage.

Les exemplaires originaux dont la couverture en papier est imprimée sont filmés en commençant par le premier plat et en terminant soit par la dernière page qui comporte une empreinte d'impression ou d'illustration, soit par le second plat, selon le cas. Tous les autres exemplaires originaux sont filmés en commençant par la première page qui comporte une empreinte d'impression ou d'illustration et en terminant par la dernière page qui comporte une telle empreinte.

Un des symboles suivants apparaîtra sur la dernière image de chaque microfiche, selon le cas: le symbole \rightarrow signifie "A SUIVRE", le symbole ∇ signifie "FIN".

Les cartes, planches, tableaux, etc., peuvent être filmés à des taux de réduction différents. Lorsque le document est trop grand pour être reproduit en un seul cliché, il est filmé à partir de l'angle supérieur gauche, de gauche à droite, et de haut en bas, en prenant le nombre d'images nécessaire. Les diagrammes suivants illustrent la méthode.

ire
détails
es du
modifier
er une
filmage

es

e

y errata
d to

nt
ne pelure,
çon à



32X

RARE

SABIN 73502

(PUB. TO ACCOMPANY DAVISON'S
TRAVELLER'S GUIDE).

BY G. M. DAVISON

ROUTES
AND
TABLES OF DISTANCES
EMBRACED IN THE
TRAVELLER'S GUIDE
THROUGH THE
NORTHERN AND MIDDLE STATES
AND
THE CANADAS.

Saratoga Springs:

PUBLISHED BY G. M. DAVISON.

1833.

Routes and Tables

OF

INTERMEDIATE DISTANCES.

From Savannah, Geo. to Charleston, S. C.

BY WATER—110 miles.

	<i>Miles.</i>		<i>Miles.</i>
From Savannah to		North Edisto Sound,..	10
Tybee Sound,.....	12	Light House,.....	25
Port Republican,.....	25	Charleston Bar,.....	3
Beaufort,.....	10	Charleston,.....	7
South Edisto,.....	18		

BY LAND—118 miles.

From Savannah to		Thompson's Tavern,..	9
Beck's Ferry, on		Pompon P. Office,....	11
the Savannah r.....	25	Jackson Borough,....	3
Fitch's, Echan road,..	19	Hick's Tavern,.....	10
Coosauhatchie,.....	4	Green's Tavern,.....	10
Pocotaligo,.....	6	Ashly River,.....	8
Saltketcher Church,..	7	Charleston,.....	6

From Charleston to New-York.

BY WATER—670 miles.

From Charleston to		Off Barnegat Inlet,....	70
Cape Fear,.....	120	The Bar,.....	45
Off Cape Look Out,..	75	Sandy Hook,.....	3
Cape Hatteras,....	78	The Narrows,.....	11
Capes of Virginia,..	140	New-York,.....	8
Cape May,.....	120		

From Charleston to Norfolk, Va.

BY THE COAST—419 miles.

	<i>Miles.</i>		<i>Miles.</i>
<i>By land.</i>		Rhode's,	24
From Charleston to		Trenton,	11
Greenwich,	4	Newbern,	20
Wapetan Church,	15	Washington,	35
Tweedden Cottons,	17	Plymouth,	35
Santee R., S. Branch, ..	10	Mouth of Roanoake R. 8	
N. Branch, ..	2	<i>By steam-boat.</i>	
Georgetown,	14	Wade's Point, Albe-	
On the Sands,	20	marle Sound,	45
Varenes, N. C.	13	Elizabeth City,	17
Smithville,	26	<i>By land.</i>	
Brunswick,	12	Pasquotank River,	12
Wilmington,	18	N. Carolina state line, 10	
Hermitage,	6	Portsmouth,	20
S. Washington,	24	Norfolk,	1

From Norfolk to Washington City.

BY WATER—195 miles.

From Norfolk to the		Off Outlet St. Mary's	
Mouth of Elizabeth		river,	42
river,	9	Off Port Tobacco,	38
Mouth of James river, 6		Mouth of Potomac riv-	
Mouth of York river,		er,	15
Old Point Comfort, ..	20	Mount Vernon,	25
New Point Comfort, ..	10	Alexandria,	9
Rappahannock river, ..	15	Washington,	6

From Norfolk to Baltimore, Md.

BY WATER—191 miles.

From Norfolk to the		Smith's Point,	25
mouth of the Rappa-		Outlet of Potomac,	10
hannock, as in the		Outlet of Pautuxent	
preceding table,	60	river,	18

<i>Miles.</i>	<i>Miles.</i>
Cone Point,..... 5	Sandy Point,..... 6
Sharp's Island,..... 15	Mouth of the Pataps-
Three Sisters,..... 16	co river,..... 11
Annapolis, 10	Baltimore,..... 15

From Norfolk to Richmond, Va.

BY WATER—122 miles.	BY LAND—110 miles.
From Norfolk to the	Mouth of Elizabeth r.. 9
mouth of Elizabeth r. 9	Cross Hampton Roads
Day's Point,..... 10	to Hampton..... 8
Hog Island,..... 16	Half-way House,.... 11
Swan's Point,..... 9	York,..... 10
Chickahomany r..... 4	Williamsburgh,..... 12
Fort Powhatan,..... 21	Chiswell,..... 14
Eppe's Island,..... 17	Cumberland,..... 16
Chesterfield,..... 23	Chickahomany river,.. 16
Richmond,..... 13	Richmond,..... 14

From Richmond to Monticello, Va.

BY LAND—80 miles.

From Richmond to	Gordonsville,..... 12
Goochland county	Milton, on the Rivanna
line,..... 20	river,..... 12
Fluvanna county line, 33	Monticello,..... 3

From Monticello to the Warm Springs, Va.

BY LAND—91 miles.

From Monticello to	Staunton,..... 12
Charlottesville,.... 2	Cloverdale,..... 28
Rockfish Gap,..... 24	Green Valley,..... 10
Waynesboro',..... 2	Warm Springs,..... 13

From Richmond to Washington City.

120 miles.

	<i>Miles.</i>		<i>Miles.</i>
<i>By stage.</i>		Vileboro',	8
From Richmond to		Fredericksburgh,	14
Chickahomany riv-		Mouth of Potomac	
er,	10	Creek,	9
Hanover Court House,	10	<i>By steam-boat.</i>	
White Chimneys,	10	Mount Vernon,	30
Mattapony river,	8	Alexandria,	9
Bowling Green,	6	Washington,	6

From Washington to Baltimore, Md.

BY LAND—38 miles.

Bladensburgh,	6	Patapsco river,	9
Vansville,	8	Gwinn's Falls,	5
Patuxent r. w. branch,	3	Baltimore,	3
do e. branch,	4		

From Baltimore to Philadelphia, Penn.

STAGE ROUTE—101 miles.

From Baltimore to		Elkton,	8
Herring's Run,	4	Big Elk Creek,	1
Bird's Run,	8	Delaware state line, ..	2
Great Gunpowder		Christiana Creek,	3
Falls,	3	Christiana,	5
Little do.	2	Newport,	5
Winter's Run,	4	Wilmington,	4
Hartford,	4	Brandywine Creek, ...	1
Havre de Grace,	11	Chester,	13
Susquehannah river, ..	1	Darby,	8
Charleston,	5	Schuylkill river,	6
North East river,	2	Philadelphia,	1

STEAM BOAT AND RAIL ROAD ROUTE—115½ miles.

<i>Miles.</i>		<i>Miles.</i>	
<i>By steam boat.</i>		<i>By rail road.</i>	
From Baltimore to		From French Town,	
Fort M'Henry,	3	Md. to New Castle,	
Sparrow's Point,	6	Del.	16½
North Point,	4	<i>By steam boat.</i>	
Miller's Island,	8	Christiana Creek, Del.	5
Pool's Island,	8	Marcus Hook, Penn.	8
Grove Point,	16	Chester,	4
Turkey Point,	6	Lazaretto,	5
French Town,	13	Fort Mifflin,	5
		Philadelphia,	8

From Philadelphia to the Schuylkill and Lehigh Coal Mines—123 miles.

<i>By rail road.</i>		Birdsboro',	6
From Philadelphia to		Reading,	10
Germantown,	6	Hamburgh,	23
Norristown,	9	Port Clinton,	4
<i>By stage or canal.</i>		Schuylkill Haven,	12
Phenixville,	13	Pottsville,	5
Pottstown,	14	Port Carbon,	2
Unionsville,	4	Mauch Chunk,	15

From Lehigh to Easton, Penn.—26 miles.

From Lehigh to the		Bethlehem,	11
Water Gap,	3	Easton,	12

From Easton to Schooly's Mountain, N. J. and thence to New-York—71 miles.

From Easton to Phil-		Morristown,	6
ipsburgh,	1	Passaic river,	7
Top of Schooly's		Newark,	11
Mountain,	24	New-York,	10
Mendham,	12		

From Philadelphia to New-York.

STEAM BOAT AND RAIL ROAD ROUTE—85 miles.

<i>By steam boat.</i>		<i>Miles.</i>	<i>By rail road.</i>		<i>Miles.</i>
From Philadelphia to			Hightstown,.....	14	
Burlington, N. J....	18		Amboy,	20	
Bristol, Penn.....	1		<i>By steam boat.</i>		
Bordentown, N. J....	9		New-York,	23	

STEAM BOAT AND STAGE ROUTE—97 miles.

<i>By steam boat.</i>			<i>By stage.</i>		
From Philadelphia to			Princeton,.....	11	
Burlington, N. J....	18		Kingston,	3	
Bristol, Penn.....	1		New-Brunswick,....	12	
Bordentown, N. J. ...	9		<i>By steam boat.</i>		
Trenton,.....	7		Perth Amboy,	13	
			Elizabethtown Point, .	13	
			New-York,	10	

LAND ROUTE—94 miles.

From Philadelphia to		Cross the Delaware to	
Rising Sun,	4	Lambertsville, N. J.	1
Milestown,.....	3	New Meeting,.....	3
Tacony creek,	2	Old Ringos,	3
Jenkintown,.....	2	Raritan Bridge,	14
Abington,.....	1	Somerville,.....	4
Willowgrove,	2	Roundbrook,	4
Hatborough,	2	Plainfield,.....	6
Cross Roads,	4	Scotch Plains,	3
Neshaminy Bridge,..	3	Springfield,	6
Greenville,.....	5	Camptown,	4
Great Spring,	3	Newark,.....	3
New Hope,	2	New-York,	10

From New-York to Boston, via Providence.

227 miles.

<i>Miles.</i>	<i>Miles.</i>	
<i>By steam boat.</i>		
Hell or Hurl Gate, N. Y.	Point Judith, R. I. 9	
6	Brenton's Point, 10	
Frog Point, 9	Newport, 2	
Sands Point, 5	Prudence I. S. end, ... 6	
Norwalk Island, Ct. .. 20	Canonicut Point, 9	
Stratford Point, 15	Pawtucket River, 5	
New-Haven Lt. Ho... 13	Providence, 6	
Faulkner's Island, 14	<i>By land.</i>	
Saybrook Lt. House, mouth of Con. R.... 16	Pawtucket Falls, 4	
Off New-London, 14	Attleboro' Mass. 8	
Fisher's I. west end, .. 1	Foxboro'. 6	
Watch Hill Lt. Ho.... 21	Walpole, 2	
	Dedham, 11	
	Boston, 10	

From New-York to Boston, via Norwich, Ct.

221 miles.

<i>By steam boat.</i>	<i>By stage.</i>
Connecticut River, as in the above table, ..103	Jewitt's City, 8
Mouth of Thames R.. 14	Plainfield, 7
New-London, 4	Sterling, 4
Gales' Ferry, 5	Scituate, R. I. 11
Norwich Landing, ... 9	Johnson, 7
	Providence, 8
	Boston, Mass. as be- fore, 41

From New-York to Boston, via Hartford, Ct.

254 miles.

<i>By steam boat.</i>	Haddam, 10
Mouth of Connecti- cut River as before, 103	Middletown, 12
Saybrook, 2	Wethersfield, 11
Lyme, 5	Hartford, 5

*2

	<i>Miles.</i>		<i>Miles.</i>
		<i>By stage.</i>	
Vernon,	11	Douglass, Mass.	11
Tolland,	7	Mendon,	12
Ashford,	10	Medway,	13
Pomfret,	12	Dedham,	12
Thompson	8	Boston,	10

*From New-York to Boston, via New-Haven and
Hartford—217 miles.*

<i>By steam boat.</i>		<i>By stage.</i>	
New-Haven Light Ho.		Wallingford,	12
Ct. as before,	73	Meriden,	5
New-Haven,	4	Berlin,	7
		Hartford,	10
		Boston, Mass. as bef...	106

*From New-York to New-Haven, via Norwalk,
Fairfield, &c.—85 miles.*

<i>By steam boat.</i>		<i>By stage.</i>	
Hurl Gate, N. Y.	6	Sagatuck,	3
Sawpits,	28	Fairfield,	5
Horseneck, Ct.	4	Bridgeport,	4
Stamford,	6	Stratford,	4
Norwalk,	11	Milford,	4
		New-Haven,	10

From New-York to Albany.

BY WATER—144 miles.

	DISTANCE FROM		
	place to place.	New-York.	Albany.
New-York,			144
Weehawken,	6	6	138
Palisadoes, southern termination,	2	8	136
Fort Washington,	4	12	132
Tappan Bay, southern extremity,	12	24	120
Sing Sing,	8	32	112
Haverstraw Bay,	2	34	110
Stoney Point,	5	39	105
Verplanck's Point,	1	40	104
Horse Race, (Highlands,)	2	42	102
Anthony's Nose,	3	45	99
West Point,	5	50	94
Pollopel Island,	6	56	88
Newburgh,	4	60	84
Milton,	11	71	73
Poughkeepsie,	4	75	68
Hyde Park,	5	80	63
Rhinebeck,	10	90	53
Redhook, lower landing,	7	97	46
Redhook, upper do.	3	100	43
Catskill,	11	111	32
Hudson,	5	116	27
Coxsackie,	8	124	19
Kinderhook,	1	125	18
New-Baltimore,	5	130	13
Schodack,	4	134	10
Albany,	10	144	0

From Albany to Saratoga Springs.

BY RAIL ROAD—36½ miles.

<i>Miles.</i>			<i>Miles.</i>
From Albany to Buel's		Ballston Lake,.....	10
Farm,	3	Ballston Spa,.....	5
Schenec'ady,	12	Saratoga Springs,....	6½

From Saratoga Springs to the Battle Ground, and from thence to Schuylerville—22 miles.

From the Springs to		Smith's House,	2
Saratoga Lake,	4	Schuylerville,	8
Bemus' Heights,	8		

From Saratoga Springs to Lake George, and from thence to Ticonderoga—66 miles.

<i>By stage.</i>			<i>By steam boat.</i>
From the Springs to		From Caldwell to the	
Glen's Falls,	18	out-let of L. George, 36	
Lake George,	9	<i>By stage.</i>	
		Ticonderoga,	3

 S
 E
 S
 A
 S
 C
 P
 E
 E
 L
 H
 E
 U
 N
 M
 V
 O
 L
 G
 C
 M
 J
 C
 O
 M
 S
 A

From Saratoga Springs to Buffalo.

RAIL ROAD AND STAGE ROUTE—300 miles.

Distance from

	place to place.	Saratoga Sp.	Schenectady.	Utica.	Auburn.	Buffalo.
Saratoga Springs,	0	0	21	97	172	300
Ballston Spa,	6½	6½	14½	90½	165½	293½
Schenectady,	14½	21	0	76	151	279
Amsterdam,	16	37	16	60	135	263
Schoharie Creek,	7	44	23	53	128	256
Caughnawaga,	4	48	27	49	124	252
Palatine,	12	60	39	37	112	240
Fort Plain,	3	63	42	34	109	237
East Canada Creek, ...	4	67	46	30	105	233
Little Falls,	7	74	53	23	98	226
Herkimer,	8	82	61	15	90	218
Frankfort,	6	88	67	9	84	212
Utica,	9	97	76	0	75	203
New Hartford,	4	101	80	4	71	199
Manchester,	5	106	85	9	66	194
Vernon,	8	114	93	17	58	186
Oneida Castle,	5	119	98	22	53	181
Lenox,	3	122	101	25	50	178
Quality Hill,	3	125	104	28	47	175
Chittenango,	5	130	109	33	42	170
Manlius,	8	138	117	41	34	162
Jamesville,	6	144	123	47	28	156
Onondaga Hollow, ...	4	148	127	51	24	152
Onondaga Hill,	3	151	130	54	21	149
Marcellus,	8	159	138	62	13	141
Skaneateles,	6	165	144	68	7	135
Auburn,	7	172	151	75	0	128

	<i>Distance from</i>					
	<i>place to place.</i>	<i>Saratoga Sp.</i>	<i>Schenectady.</i>	<i>Utica.</i>	<i>Auburn.</i>	<i>Buffalo.</i>
Cayuga,	8	180	159	83	8	120
Seneca Falls,	4	184	163	87	12	116
Waterloo,	4	188	167	91	16	112
Geneva,	7	195	174	98	23	105
Canandaigua,	16	211	190	114	39	89
East Bloomfield,	9	220	199	123	48	80
West Bloomfield,	5	225	204	128	53	75
Lima,	4	229	208	132	57	71
East Avon,	5	234	213	137	62	66
Avon Post Office,	2	236	215	139	64	64
Caledonia,	8	244	223	147	72	56
Leroy,	6	250	229	153	78	50
Batavia,	10	260	239	163	88	40
Pembroke,	14	274	253	177	102	26
Clarence,	8	282	261	185	110	18
Williamsville,	8	290	269	193	118	10
Buffalo,	10	300	279	203	128	0

Fr
 Alt
 Tro
 Jun
 Sch
 Am
 Sch
 Cau
 Spr
 Can
 Bow
 Litt
 Her
 Ger
 Fra
 Uti
 Wh
 Ori
 Rom
 Nev
 Loc
 One
 Len
 Can
 Nev
 Chit
 Kir
 Mar
 Orv
 Syra
 Ged
 Nin
 Cam

From Albany to Buffalo.—CANAL ROUTE—363 miles.

Distance from

	place to place	Albany.	Schenectady.	Utica.	Syracuse.	Port Byron.	Rochester.	Lockport.	Buffalo.
Albany.....	0	0	30	110	171	200	270	333	363
Troy	7	7	23	103	164	193	263	326	356
Junction	2	9	21	101	162	191	261	324	354
Schenectady	21	30	0	80	141	170	240	303	333
Amsterdam.....	16	46	16	64	125	154	224	287	317
Schoharie Creek..	7	53	23	57	118	147	217	280	310
Caughnawaga....	4	57	27	53	114	143	213	276	306
Spraker's Basin ..	9	66	36	44	105	134	204	267	297
Canajoharie.....	3	69	39	41	102	131	201	264	294
Bowman's Creek..	3	72	42	38	99	128	198	261	291
Little Falls	16	88	58	22	83	112	182	245	275
Herkimer	7	95	65	15	76	105	175	238	268
German Flats....	2	97	67	13	74	103	173	236	266
Frankfort	3	100	70	10	71	100	170	233	263
Utica.	10	110	80	0	61	90	160	223	253
Whitesboro'	3	114	84	4	57	86	156	219	249
Oriskany.....	4	117	87	7	54	83	153	216	246
Rome.....	8	125	95	15	46	75	145	208	238
New-Iondon	7	132	102	22	39	68	138	201	231
Loomis.....	6	138	108	28	33	62	132	195	225
Oneida Creek....	3	141	111	31	30	59	129	192	222
Lenox Basin	3	144	114	34	27	56	126	189	219
Canastota.....	2	146	116	36	25	54	124	187	217
New Boston.....	4	150	120	40	21	50	120	183	213
Chitteningo	4	154	124	44	17	46	116	179	209
Kirkville	4	158	128	48	13	42	112	175	205
Manlius	4	162	132	52	9	38	108	171	201
Syracuse	3	165	135	55	6	35	105	168	198
Syracuse	6	171	141	61	0	29	99	162	192
Geddes	2	173	143	63	2	27	97	160	190
Nine Mile Creek..	6	179	149	69	8	21	91	154	184
Camillus.....	1	180	150	70	9	20	90	153	183

Distance from

	place to place.	Albany.	Schenectady.	Utica.	Syracuse.	Port Byron.	Rochester.	Lockport.	Buffalo.
Canton	5	185	155	75	14	15	85	148	178
Jordan.....	6	191	161	81	20	9	79	142	172
Weed's Port.....	6	197	167	87	26	3	73	136	166
Centre Port.....	1	198	168	88	27	2	72	135	165
Port Byron.....	2	200	170	90	29	0	70	133	163
Lakeport.....	6	206	176	96	35	6	64	127	157
Clyde.....	11	217	187	107	46	17	53	116	146
Lyons.....	9	226	196	116	55	26	44	107	137
Lockville.....	6	232	202	122	61	32	38	101	131
Newark.....	1	233	203	123	62	33	37	100	130
Port Gibson.....	3	236	206	126	65	36	34	97	127
Palmyra.....	5	241	211	131	70	41	29	92	122
Fair Port.....	11	252	222	142	81	52	18	81	111
Fullom's Basin...	2	254	224	144	83	54	16	79	109
Pittsford.....	6	260	230	150	89	60	10	73	103
Rochester.....	10	270	240	160	99	70	0	63	93
Spencer's Basin..	10	280	250	170	109	80	10	53	83
Ogden.....	2	282	252	172	111	82	12	51	81
Adams' Basin....	3	285	255	175	114	85	15	48	78
Brockport.....	5	290	260	180	119	90	20	43	73
Holley.....	5	295	265	185	124	95	25	38	68
Murray.....	2	297	267	187	126	97	27	36	66
Albion.....	8	305	275	195	134	105	35	28	58
Portville.....	4	309	279	199	138	109	39	24	54
Oak Orchard.....	5	314	284	204	143	114	44	19	49
Medina.....	1	315	285	205	144	115	45	18	48
Middleport.....	6	321	291	211	150	121	51	12	42
Lockport.....	12	333	303	225	162	133	63	0	30
Pendleton.....	7	340	310	230	169	140	70	7	23
Tonawanda.....	12	352	322	262	181	152	82	19	11
Black Rock.....	8	360	330	250	189	160	90	27	3
Buffalo.....	3	363	333	253	192	163	93	30	0

From Buffalo to Niagara Falls.

—BY STAGE.

<i>Miles.</i>	<i>On the American side—</i>	<i>Miles.</i>	<i>On the Canada side—</i>
	23 miles.		22 miles.
	From Buffalo to Black		From Buffalo to Black
	Rock,..... 3		Rock,..... 3
	Tonawanda,..... 9		Cross the Niagara to
	Niagara Falls,..... 11		Waterloo,..... 1
			Chippewa battle gr'nd, 15
			Chippewa village,..... 1
			Niagara Falls,..... 2

From Niagara Falls to Montreal.

BRITISH SIDE—404 miles.

	<i>By stage.</i>		<i>By steam boat.</i>
	From the Falls to Ni-		Cornwall to Coteau du
	agara,..... 14		Lac,..... 4 1/2
	<i>By steam boat.</i>		<i>By stage.</i>
	From the mouth of the		Coteau du Lac to Cas-
	Niagara to Prescott, 250		cades,..... 16
	<i>By stage.</i>		<i>By steam boat.</i>
	From Prescott to Corn-		Cascades to Lachine,.. 24
	wall, 50		<i>By stage.</i>
			Lachine to Montreal,.. 9

AMERICAN SIDE—385 miles.

	<i>By steam boat.</i>		Morristown,..... 50
	From Lewiston to Fort		<i>By stage.</i>
	Niagara,..... 7		Ogdensburg,..... 12
	Genesee River,..... 74		Gallop Islands,..... 5
	Great Sodus Bay,..... 35		Hamilton,..... 19
	Oswego River,..... 28		St. Regis,..... 35
	Sacket's Harbor, 40		La Chine,..... 53
	Cape Vincent,..... 20		Montreal,..... 7

From Kingston, Canada, through the Rideau Canal, to Montreal—250 miles.

<i>Miles.</i>	<i>Miles.</i>
From the junction of the canal with Lake Ontario to its junction with the Ottawa river,.....	From the latter place, <i>via</i> the Ottawa or Grand river to Montreal,.....
130	120

From Montreal to Quebec.

BY STEAM BOAT—170 miles.

From Montreal to William Henry,.....	Richlieu Rapids,.....	7
Three Rivers,.....	Quebec,.....	63
60		

From Montreal to Whitehall—181 miles.

<i>By stage.</i>			
From Montreal to Longueuil,.....	2	Plattsburgh,.....	15
Chambly,.....	13	Port Kent,.....	15
St. Johns,.....	12	Burlington,.....	11
<i>By steam boat.</i>		Split Rock,.....	12
Isle Aux Noix,.....	14	Essex,.....	2
Rouse's Point,.....	10	Basin Harbor,.....	12
Chazy,.....	12	Crown Point,.....	12
		Ticonderoga,.....	15
		Whitehall,.....	24

From Whitehall to Albany.

BY STAGE AND RAIL ROAD—75½ miles.

<i>By stage.</i>		<i>By rail road.</i>	
From Whitehall to Ft. Ann,.....	11	Ballston Spa,.....	6½
Sandy Hill,.....	10	Ballston Lake,.....	5
Fort Ville,.....	7	Schenectady,.....	10
Wilton,.....	4	Buel's Farm,.....	12
Saratoga Springs,....	7	Albany,.....	3

BY CANAL—71 miles.

		<i>Miles.</i>			<i>Miles.</i>
From Whitehall to Ft.			Bemus' Heights,	12	
Ann,	12		Stillwater V.	3	
Sandy Hill,	8		Mechanics Ville,	3	
Fort Edward,	2		Waterford,	8	
Fort Miller Falls,	8		Watervliet,	2	
Saratoga Falls,	3		Gibbon's Ville,	2	
Schuylerville,	2		Albany,	6	

From Albany to Boston.

BY STAGE—164 miles.

Schodack,	5	Belchertown,	10
Nassau,	12	Ware,	9
New-Lebanon,	8	Brookfield,	8
Pittsfield,	9	Spencer,	7
Dalston,	6	Leicester,	5
Peru,	7	Worcester,	6
Worthington,	8	Framingham,	20
Chesterfield,	9	Weston,	5
Northampton,	13	Watertown,	5
Hadley,	2	Boston,	10

From Saratoga Springs to Boston.

BY STAGE—161 miles.

From Saratoga Springs		Marlborough,	5
to Schuyler-Ville,	12	Jeffrey,	5
Union Village,	5	New Ipswich,	10
Cambridge,	8	Townsend,	12
Arlington, Vt.	12	Pepperel, Mass.	6
Manchester,	12	Groton,	3
Landsgrove,	15	Littleton,	8
Chester,	15	Acton,	3
Bellows Falls,	14	Concord,	7
Walpole Village, N. H.	4	Lexington,	7
Walpole,	4	Cambridge,	7
Keene,	14	Boston,	3

From Whitehall, N. Y. to Boston, Mass.

BY STAGE—178 miles.

	<i>Miles.</i>		<i>Miles.</i>
From Whitehall to		Chester,.....	40
Fairhaven, Vt.....	9	From Chester to Bos-	
Castleton,	5	ton as in preceding	
Rutland,	10	table,.....	114

From Burlington, Vt. to Boston, through Windsor, Vt.

BY STAGE—206 miles.

From Burlington to		Claremont, N. H.....	9
Williston,	8	Lempster,.....	12
Richmond,.....	9	Washington,	7
Bolton,.....	2	Hillsborough,.....	9
Waterbury,.....	8	Francistown,	9
Moretown,.....	4	Mount Vernon,	9
Montpelier,.....	7	Amherst,	6
Williamstown,.....	10	Merrimack,.....	3
Brookfield,	8	Dunstable,	7
Randoloh,.....	12	Tyngsborough,	6
Royalton,	3	Chelmsford,.....	7
Barnard,	6	Billerica,	4
Woodstock,.....	8	Woburn,.....	9
Windsor,.....	14	Boston,.....	10

From Burlington to Boston, by way of the White Mountains and Concord, N. H.—275 miles.

<i>By stage.</i>			
From Burlington to		Notch House,.....	2
Montpelier,	38	Crawford's Farm,	6
Littleton, N. H.....	40	Bartlett,	7
E. A. Crawford's,.....	18	Conway,	10
Notch of the White		Six Mile Pond,.....	11
Mountains,.....	5	Centre Harbor,	24
		Guilford,.....	13

Uni
Win
Con
Hoc
Am
Pisc

Cap
Port
Port
Bath
Aug
Hal

From
Sale
New
Port

From
Y
Free
Brun
Bow
Hall
Aug
Sidn
Wa
Fair

	<i>Miles.</i>		<i>Miles.</i>
Union Bridge,.....	7	Merrimack,.....	10
Winnepiseogee Bridge	4	Nashua,.....	6
Concord,.....	17	Tyngsborough,.....	8
Hookset,.....	8	Lowell,.....	7
Amoskeag,.....	7	<i>By rail road.</i>	
Piscataqua,.....	2	Boston,.....	25

From Boston to Eastport, Maine.

BY STEAM BOAT—518 miles.

Cape Ann, Mass.....	45	Gardiner,.....	3
Portsmouth, N. H.....	36	Boothbay,.....	54
Portland, Me.....	64	Owls Head,.....	48
Bath,.....	45	Belfast,.....	30
Augusta,.....	36	Castine,.....	12
Hallowell,.....	5	Eastport,.....	140

From Boston to Portland, Maine.

BY STAGE—120 miles.

From Boston to Lynn,	9	York, Me.....	9
Salem,.....	5	Kennebunk,.....	24
Newburyport,.....	24	Saco,.....	10
Portsmouth, N. H. ...	24	Portland,.....	15

From Portland to Quebec.

BY STAGE—258 miles.

From Portland to North		Bloomfield,.....	7
Yarmouth,.....	12	Norridgework,.....	5
Freeport,.....	6	Anson,.....	11
Brunswick,.....	9	Dead River,.....	20
Bowdoin town,.....	13	Forks of Kennebeck	
Hallowell,.....	15	River,.....	15
Augusta,.....	3	Moose River,.....	24
Sidney,.....	12	Chaudiere River,....	37
Waterville,.....	5	Quebec,.....	60
Fairfield,.....	4		

From Portland to Eastport, Me.

BY STAGE—287 miles.

<i>Miles.</i>		<i>Miles.</i>	
From Portland to North		Castine,.....	4
Yarmouth,.....	12	Blue Hill,.....	10
Freeport,.....	6	Surry,.....	8
Brunswick,.....	9	Trenton,.....	12
Bath,.....	7	Sullivan,.....	9
Wiscasset,.....	15	Steuben,.....	14
Newcastle,.....	11	Harrison,.....	8
Waldoborough,.....	12	Columbia,.....	12
Warren,.....	8	Jonesborough,.....	9
Thomastown,.....	5	Machias,.....	9
Camden,.....	11	E. Falls of Machias, ..	6
Lincolnton,.....	7	Denneysville,.....	23
Belfast,.....	11	Eastport Ferry,.....	14
Buckstown,.....	18	Eastport,.....	4
Penobscot,.....	13		

From Boston to Providence, R. I.

BY STAGE—40 miles.

From Boston to Rox-		Wrentham,.....	4
bury,.....	2	Pawtucket,.....	9
Dedham,.....	8	Providence,.....	7
Walpole,.....	10		

From Providence to Newport, R. I.

BY STAGE—30 miles.

From Providence to	
Bristol,.....	15
Newport,.....	15

BY STEAM BOAT—26 miles.

From Providence to	
Pawtucket river, ...	6
Canonicut Point,.....	5
Prudence Island,.....	9
Newport,.....	6

From Providence to New-London, Conn.

BY STAGE—56 miles.

<i>Miles.</i>		<i>Miles.</i>
From Providence to	Hopkinton,.....	15
Centreville,..... 11	Stonington,.....	11
West Greenwich,.... 2		

From New London to Norwich, Conn.

BY STEAM-BOAT—14 miles.

From New-London to	Trading Cove,.....	1
Mohegan,..... 9	Norwich,.....	4

From Norwich to Hartford, Conn.

BY STAGE—39 miles.

From Norwich to	Bolton,.....	4
Bozrah,..... 5	East Hartford,.....	13
Lebanon,..... 4	Hartford,.....	1
Coventry,..... 12		

From Hartford to New-Haven, Conn.

BY STAGE—40 miles.

From Hartford to	Durham,.....	7
Wethersfield,..... 4	Northford,.....	8
Rocky Hill,..... 3	New-Haven,.....	10
Middletown,..... 8		

From New-Haven to New-York.

BY STAGE—86 miles.

Stratford,..... 13	Stamford,.....	11
Bridgeport,..... 3	Greenwich,.....	6
Fairfield,..... 5	Harlæm,.....	30
Norwalk,..... 10	New-York,.....	8

From New-Haven to Litchfield, Conn.

BY STAGE—38 miles.

	<i>Miles.</i>	<i>Miles.</i>
From New-Haven to		Watertown,..... 12
West Rock,..... 2		Litchfield,..... 12
Beacon Mountain,.... 12		

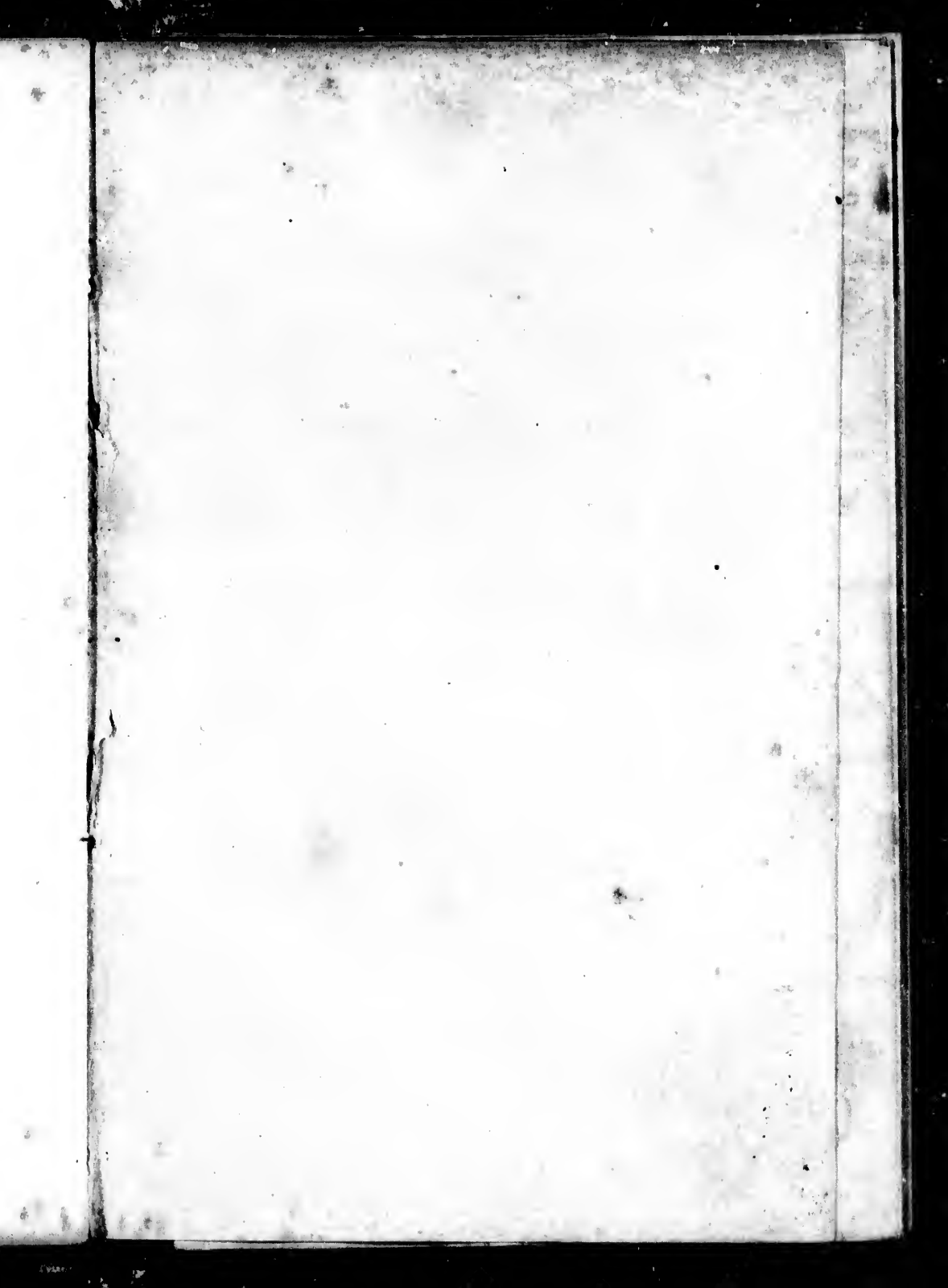
From Litchfield to Hartford, Conn.

BY STAGE—30 miles.

From Litchfield to		Farmington,..... 6
Hawintown,..... 7		Hartford,..... 10
Burlington,..... 7		

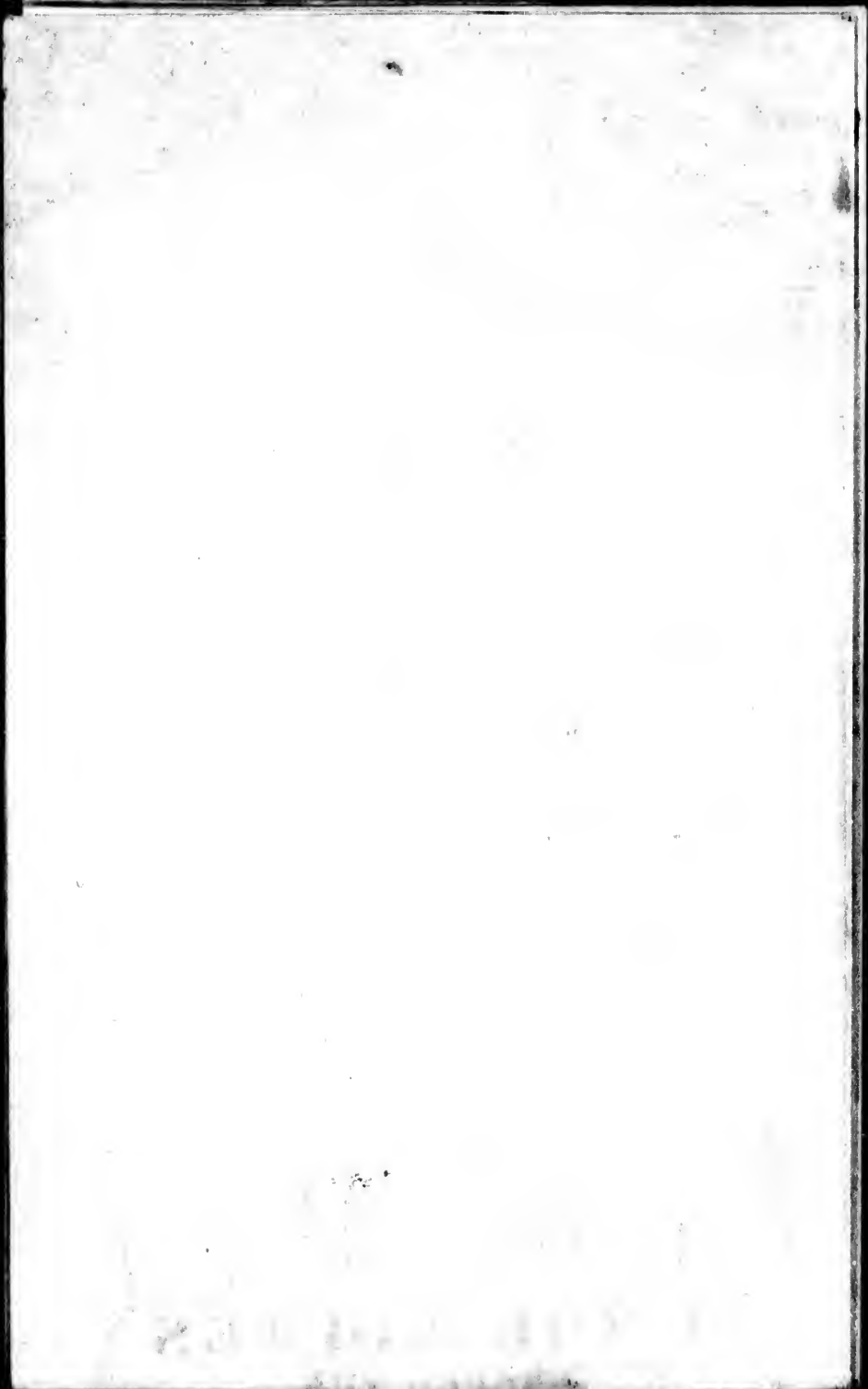
Route up the Valley of the Connecticut River.

From Hartford to		Guilford,..... 5
Windsor, Conn..... 7		Brattleborough,..... 6
Enfield,..... 9		Dummerston,..... 5
Suffield, Mass..... 1		Putney,..... 5
West Springfield,.... 9		Westminster,..... 5
Springfield,..... 1		Bellows Falls,..... 4
South Hadley Falls,.. 12		Charlestown, N. H.... 8
Northampton,..... 5		Springfield, Vt..... 5
Hadley,..... 2		Weathersfield,..... 6
Hatfield,..... 5		Windsor,..... 7
Deerfield,..... 3		Hartland,..... 7
Greenfield,..... 4		Hartford,..... 7
Bernardstown,..... 5		Hanover, N. H..... 1
Vernon, Vt..... 6		



Landa 12/62

F 106
D 2042
Reo



LOWE

46

45

44

43

42

41

UPPER

CANADA

LAKE ONTARIO

LAKE ERIE

NE

PENNSYLVANIA





LOWER

CANADA

MAINE

VERMONT

NEW HAMPSHIRE

MASSACHUSETTS

CONNECTICUT

RHODE ISLAND

Quebec

Three Rivers

St. Peter

St. Henry

Grand River

LaSalle

La Prairie

Chamby

St. Lawrence

St. Johns

St. John

Chazy

Rhattsburg

Burlington

Richmond

Montpelier

Vergennes

Middlebury

St. Albans

Windsor

Whitehall

Saratoga

Albany

Troy

Greenbush

N. Lebanon

Rindershook

Hudson

Pine Orchard

Kingston

Hyde Park

Putnam

West Point

Sing Sing

Watkins

Watson

Quebec

St. Charles

R. St. Francis

Kennerly R.

Penobscot River

Norridgewock

Waterbury

Augusta

Hallowell

Brunswick

Standish

Portland

Shrewsbury

Kennebunk

Fortune

Paris

Paris

Paris

Paris

Paris

Paris

Paris

Paris

Paris

Paris

Paris

Paris

Paris

Paris

Paris

46

45

44

43

42

41



P E N N S Y L V A N I A

M A R Y L A N D

D E L A W A R E

V I R G I N I A



MAP
OF THE ROUTES
THROUGH THE
MIDDLE & NORTHERN
((STATES))
PROVINCES OF CANADA

Designed to Accompany
THE TRAVELERS GUIDE.

Published by G.M. Davidson Saratoga Springs
1833

- Explanations*
- The Capitals of States thus* □
 - Principal towns and Cities* ○
 - Canals* ———
 - Rail Roads* ———
 - Routes particularly described in the Travelers Guide* ———

41
40
39
38
37
36

1 2 3 4 5 6

