

**CIHM  
Microfiche  
Series  
(Monographs)**

**ICMH  
Collection de  
microfiches  
(monographies)**



**Canadian Institute for Historical Microreproductions / Institut canadien de microreproductions historiques**

**© 1997**



The copy filmed here has been reproduced thanks to the generosity of:

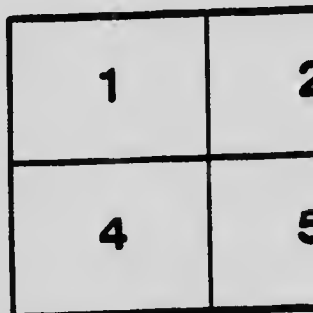
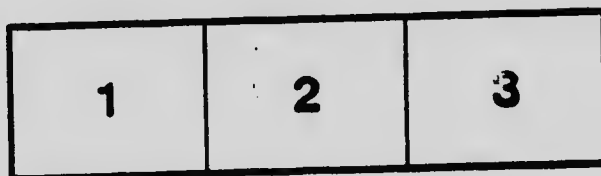
National Library of Canada

The images appearing here are the best quality possible considering the condition and legibility of the original copy and in keeping with the filming contract specifications.

Original copies in printed paper covers are filmed beginning with the front cover and ending on the last page with a printed or illustrated impression, or the back cover when appropriate. All other original copies are filmed beginning on the first page with a printed or illustrated impression, and ending on the last page with a printed or illustrated impression.

The last recorded frame on each microfiche shall contain the symbol  $\rightarrow$  (meaning "CONTINUED"), or the symbol  $\nabla$  (meaning "END"), whichever applies.

Maps, plates, charts, etc., may be filmed at different reduction ratios. Those too large to be entirely included in one exposure are filmed beginning in the upper left hand corner, left to right and top to bottom, as many frames as required. The following diagrams illustrate the method:



L'exemplaire filmé fut reproduit grâce à la générosité de:

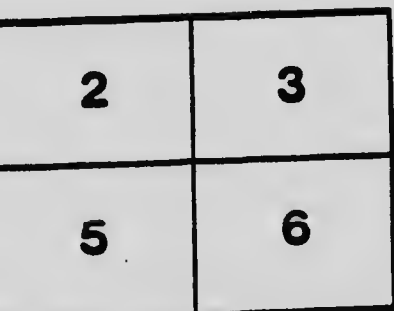
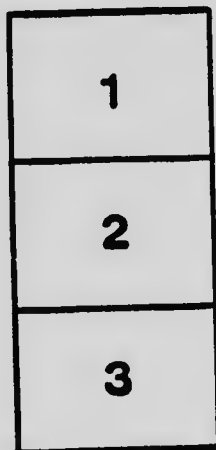
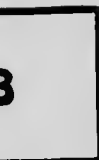
Bibliothèque nationale du Canada

Les images suivantes ont été reproduites avec le plus grand soin, compte tenu de la condition et de la netteté de l'exemplaire filmé, et en conformité avec les conditions du contrat de filmage.

Les exemplaires originaux dont la couverture en papier est imprimée sont filmés en commençant par le premier plat et en terminant soit par le dernière page qui comporte une empreinte d'impression ou d'illustration, soit par le second plat, selon le cas. Tous les autres exemplaires originaux sont filmés en commençant par le première page qui comporte une empreinte d'impression ou d'illustration et en terminant par le dernière page qui comporte une telle empreinte.

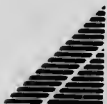
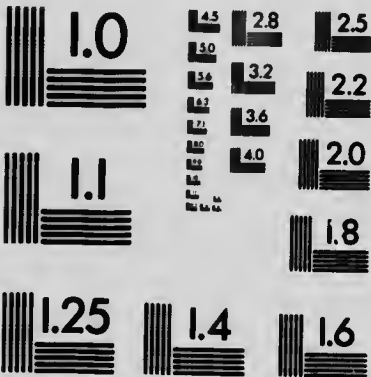
Un des symboles suivants apparaître sur le dernière image de chaque microfiche, selon le cas: le symbole  $\rightarrow$  signifie "A SUIVRE", le symbole  $\nabla$  signifie "FIN".

Les cartes, planches, tableaux, etc., peuvent être filmés à des taux de réduction différents. Lorsque le document est trop grand pour être reproduit en un seul cliché, il est filmé à partir de l'angle supérieur gauche, de gauche à droite, et de haut en bas, en prenant le nombre d'images nécessaire. Les diagrammes suivants illustrent la méthode.



# MICROCOPY RESOLUTION TEST CHART

(ANSI and ISO TEST CHART No. 2)



**APPLIED IMAGE Inc**

1653 East Main Street  
Rochester, New York 14609 USA  
(716) 482 - 0300 - Phone  
(716) 298 - 5989 - Fax



DEPARTMENT OF AGRICULTURE.

OFFICE OF THE

DAIRY AND COLD STORAGE COMMISSIONER

OTTAWA, February 27, 1912.

RE CREAMERY COLD STORAGE BONUSES.

*To Creamery Owners:*

I am authorized to announce that Creamery Cold Storage Bonuses will be paid in 1912, and until further notice, on the following terms and conditions:—

The full bonus of \$100 will be paid *only* for creamery cold storages constructed on what is known as the Circulation System, the plans and specifications for which are contained in Bulletin No. 10 of the Dairy and Cold Storage Series. Blue prints of these plans on a working scale are furnished on application.

The Cylinder System which has been recognized in the past, has proved to be unsatisfactory, for the reason that we rarely find that the filling of the cylinders is properly attended to, and there is often insufficient salt used to make that system effective. The Circulation System, while costing more to install than the Cylinder System, is cheaper in the end if the labour of filling the cylinders every day is taken into account.

A bonus, not to exceed 50 per cent of the invoice price, will be paid to creamery owners who install "Eureka," or other refrigerators of similar construction, but in no case will the amount of the bonus paid for such refrigerators be more than \$100.

Applications for bonuses must be made before the first of May, in order to secure payment that year. Forms of application will be supplied on request to the Dairy and Cold Storage Commissioner, Ottawa. Monthly temperature record blanks will also be supplied, on which a daily record of temperature must be made. These temperature reports are to be sent to the Department regularly at the end of each month, beginning with the month of May.

Creamery owners who make application for bonuses on the "Eureka" or other similar refrigerators, will be required to furnish a copy of the invoice, certified correct by the refrigerator manufacturer and also by the applicant for the bonus.

An inspector will examine all cold storages for which bonuses are asked some time during the season, and if they are found to have been constructed according to the plans and specifications and to have been properly maintained during the warm weather, the bonus will be paid at the end of the manufacturing season.

J. A. RUDDICK,

*Dairy and Cold Storage Commissioner.*





