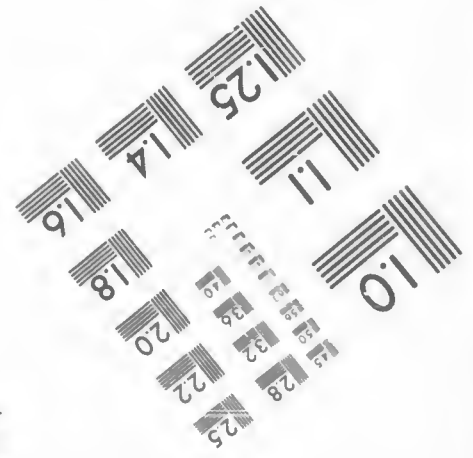
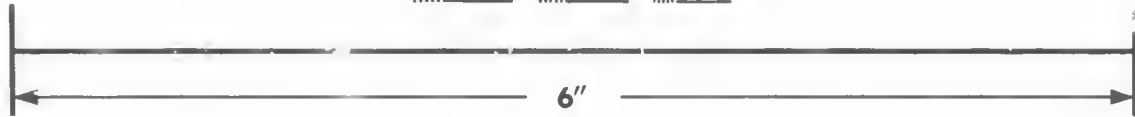
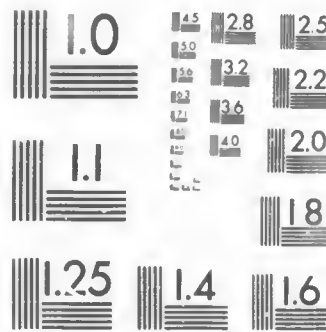


**IMAGE EVALUATION
TEST TARGET (MT-3)**



Photographic
Sciences
Corporation

23 WEST MAIN STREET
WEBSTER, N.Y. 14580
(716) 872-4503

2.5
22

**CIHM/ICMH
Microfiche
Series.**

**CIHM/ICMH
Collection de
microfiches.**



Canadian Institute for Historical Microreproductions / Institut canadien de microreproductions historiques

© 1987

Technical and Bibliographic Notes/Notes techniques et bibliographiques

The Institute has attempted to obtain the best original copy available for filming. Features of this copy which may be bibliographically unique, which may alter any of the images in the reproduction, or which may significantly change the usual method of filming, are checked below.

L'Institut a microfilmé le meilleur exemplaire qu'il lui a été possible de se procurer. Les détails de cet exemplaire qui sont peut-être uniques du point de vue bibliographique, qui peuvent modifier une image reproduite, ou qui peuvent exiger une modification dans la méthode normale de filmage sont indiqués ci-dessous.

- Coloured covers/
Couverture de couleur
- Covers damaged/
Couverture endommagée
- Covers restored and/or laminated/
Couverture restaurée et/ou pelliculée
- Cover title missing/
Le titre de couverture manque
- Coloured maps/
Cartes géographiques en couleur
- Coloured ink (i.e. other than blue or black)/
Encre de couleur (i.e. autre que bleue ou noire)
- Coloured plates and/or illustrations/
Planches et/ou illustrations en couleur
- Bound with other material/
Relié avec d'autres documents
- Tight binding may cause shadows or distortion
along interior margin/
La reliure serrée peut causer de l'ombre ou de la
distorsion le long de la marge intérieure
- Blank leaves added during restoration may
appear within the text. Whenever possible, these
have been omitted from filming/
Il se peut que certaines pages blanches ajoutées
lors d'une restauration apparaissent dans le texte,
mais, lorsque cela était possible, ces pages n'ont
pas été filmées.
- Additional comments:/
Commentaires supplémentaires:

- Coloured pages/
Pages de couleur
- Pages damaged/
Pages endommagées
- Pages restored and/or laminated/
Pages restaurées et/ou pelliculées
- Pages discoloured, stained or foxed/
Pages décolorées, tachetées ou piquées
- Pages detached/
Pages détachées
- Showthrough/
Transparence
- Quality of print varies/
Qualité inégale de l'impression
- Includes supplementary material/
Comprend du matériel supplémentaire
- Only edition available/
Seule édition disponible
- Pages wholly or partially obscured by errata
slips, tissues, etc., have been refilmed to
ensure the best possible image/
Les pages totalement ou partiellement
obscurcies par un feuillet d'errata, une pelure,
etc., ont été filmées à nouveau de façon à
obtenir la meilleure image possible.

This item is filmed at the reduction ratio checked below/
Ce document est filmé au taux de réduction indiqué ci-dessous.

10X	14X	18X	22X	26X	30X
<input type="checkbox"/>	<input type="checkbox"/>	<input checked="" type="checkbox"/>	<input type="checkbox"/>	<input type="checkbox"/>	<input type="checkbox"/>
12X	16X	20X	24X	28X	32X

The copy filmed here has been reproduced thanks to the generosity of:

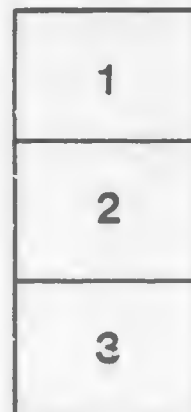
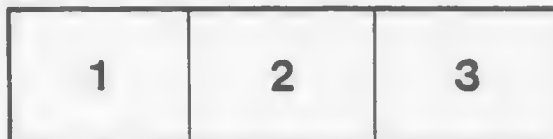
Harold Campbell Vaughan Memorial Library
Acadia University.

The images appearing here are the best quality possible considering the condition and legibility of the original copy and in keeping with the filming contract specifications.

Original copies in printed paper covers are filmed beginning with the front cover and ending on the last page with a printed or illustrated impression, or the back cover when appropriate. All other original copies are filmed beginning on the first page with a printed or illustrated impression, and ending on the last page with a printed or illustrated impression.

The last recorded frame on each microfiche shall contain the symbol \rightarrow (meaning "CONTINUED"), or the symbol ∇ (meaning "END"), whichever applies.

Maps, plates, charts, etc., may be filmed at different reduction ratios. Those too large to be entirely included in one exposure are filmed beginning in the upper left hand corner, left to right and top to bottom, as many frames as required. The following diagrams illustrate the method:



L'exemplaire filmé fut reproduit grâce à la générosité de:

Harold Campbell Vaughan Memorial Library
Acadia University.

Les images suivantes ont été reproduites avec le plus grand soin, compte tenu de la condition et de la netteté de l'exemplaire filmé, et en conformité avec les conditions du contrat de filmage.

Les exemplaires originaux dont la couverture en papier est imprimée sont filmés en commençant par le premier plat et en terminant soit par la dernière page qui comporte une empreinte d'impression ou d'illustration, soit par le second plat, selon le cas. Tous les autres exemplaires originaux sont filmés en commençant par la première page qui comporte une empreinte d'impression ou d'illustration et en terminant par la dernière page qui comporte une telle empreinte.

Un des symboles suivants apparaîtra sur la dernière image de chaque microfiche, selon le cas: le symbole \rightarrow signifie "A SUIVRE", le symbole ∇ signifie "FIN".

Les cartes, planches, tableaux, etc., peuvent être filmés à des taux de réduction différents. Lorsque le document est trop grand pour être reproduit en un seul cliché, il est filmé à partir de l'angle supérieur gauche, de gauche à droite, et de haut en bas, en prenant le nombre d'images nécessaire. Les diagrammes suivants illustrent la méthode.

Not in series list

REGULATIONS

FOR THE

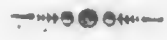
GOVERNMENT

OF THE

Collegiate Grammar School
//

AT

FREDERICTON.



FREDERICTON :

*Printed by John Simpson, Printer to the King's Most
Excellent Majesty.*

1829.

A
LE5
.C655

REGULATIONS.



AT a Meeting of the College Council, at Fredericton, held the 19th day of November, 1829, the following regulations were adopted for the Government of both Departments of the Collegiate Grammar School in Fredericton.

I.

That the Grammar and English Schools be henceforth considered as one Academy under the superintendence of the Principal Preceptor of the Grammar School.

II.

That the Principal Preceptor do not hold any Church Preferment, nor engage in any Clerical Function, which may in the opinion of the Council interfere with his Scholastic duties.

III.

That it be his Office to instruct his Pupils with strict Grammatical precision in such branches of Classical learning as may be required of Candidates for Matriculation; and to avail himself of the assistance of the English Master in his Department.

IV.

That it be the duty of the English Master to teach the pupils under his charge Reading, Writing, the rudiments of English Grammar, Geography and History, together with Arithmetic, Practical Geometry and Book keeping; and also to instruct the Classical Pupils in such of the foregoing branches and at such of the School hours as the Principal Preceptor shall consider necessary.

V.

That all the Classical Pupils shall attend the instruction of the English Master at such times and to such extent as the Principal Preceptor shall direct ; except in cases in which on the request of a Parent or Guardian the visiting Committee shall otherwise appoint.

VI.

That the Tuition money of the Classical Pupils be £6 per Annum ; £1 of which be paid over to the English Master for every Scholar, who from the higher department of the Seminary may attend his instructions ; and that the rate of tuition for such Pupils as do not attend the Classical Master be £4 per Annum.

VII.

That the Pupils in both departments be regularly divided into Classes according to their proficiency ; and that these Classes be all regularly seated at proper forms, there to pursue their studies and exercises till called on to attend the Preceptor for

recitation or examination ; and that proper books of exercises in the different branches be duly and regularly kept by all the Scholars of the different Classes.

VIII.

That there be two Public Examinations in each year of all the Pupils of the Academy held in the Library of King's College in the presence of the Council there to be assembled for that purpose ; the first to be held in the last week of Trinity Term, and the second in the last week of Michaelmas Term ; at which examinations the Council shall require an account of the work of the preceding half year to be submitted to them, and the books of exercises of all the Pupils of the several classes to be exhibited for inspection.

IX.

That there be two Vacations in the year to commence the day after the Semi-annual Examinations : the Summer vacation to be four weeks, and the Winter vacation to be a fortnight.

X.

That the School hours be from 8 to 12 in the forenoon and from 2 to 5 in the afternoon, from the 21st of March to the 23d of September, and from 9 to 12 in the forenoon and from 1 to 4 in the afternoon throughout the rest of the year ; Saturdays excepted, when there will be no afternoon School : and that the strictest punctuality of attendance be exemplified and enforced by the Preceptor.

XI.

That the duties of every day be commenced and concluded with Prayers, to be used by the Principal Preceptor according to the form hitherto employed in the Seminary.

XII.

That every Scholar appear in his Class clean and properly clad.

XIII.

That no injury by cutting, staining or

otherwise be done to the tables, desks, forms or any part of the Building.

XIV.

That the Visiting Committee of the School for the time being shall have power to admit free Scholars, so that there shall not be more than six in the School at any one time.

XV.

That no Scholar be hereafter admitted into the School (except the above mentioned free Scholars) who cannot pay the full amount of Tuition money ; and that no other qualification be required for admittance than that the Candidate be prepared to read a chapter in the Bible.

At the same meeting of the Council, the Professors of the College were appointed the Visiting Committee of the School for the ensuing year.

