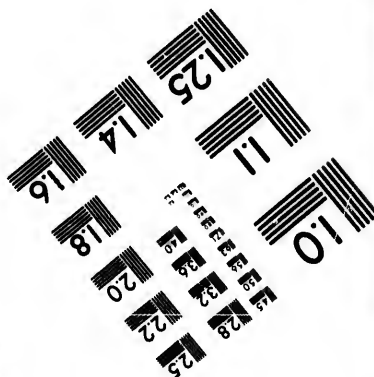
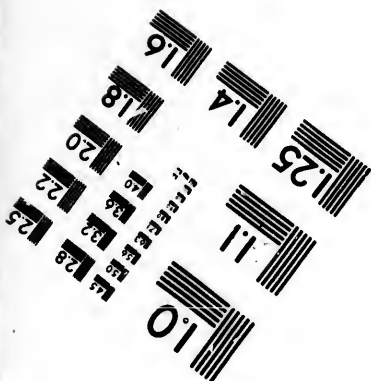
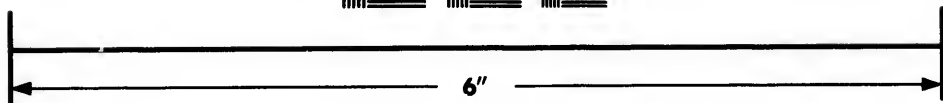
[illegible]

Photographic Sciences Corporation

**23 WEST MAIN STREET
WEBSTER, N.Y. 14580
(716) 872-4503**

**CIHM/ICMH
Microfiche
Series.**

**CIHM/ICMH
Collection de
microfiches.**



Canadian Institute for Historical Microreproductions / Institut canadien de microreproductions historiques

© 1986

Technical and Bibliographic Notes/Notes techniques et bibliographiques

The Institute has attempted to obtain the best original copy available for filming. Features of this copy which may be bibliographically unique, which may alter any of the images in the reproduction, or which may significantly change the usual method of filming, are checked below.

- ☐ Coloured covers/
Couverture de couleur
- ☐ Covers damaged/
Couverture endommagée
- ☐ Covers restored and/or laminated/
Couverture restaurée et/ou pelliculée
- ☐ Cover title missing/
Le titre de couverture manque
- ☐ Coloured maps/
Cartes géographiques en couleur
- ☒ Coloured ink (i.e. other than blue or black)/
Encre de couleur (i.e. autre que bleue ou noire)
- ☒ Coloured plates and/or illustrations/
Planches et/ou illustrations en couleur
- ☐ Bound with other material/
Relié avec d'autres documents
- ☐ Tight binding may cause shadows or distortion along interior margin/
La reliure serrée peut causer de l'ombre ou de la distorsion le long de la marge intérieure
- ☐ Blank leaves added during restoration may appear within the text. Whenever possible, these have been omitted from filming/
Il se peut que certaines pages blanches ajoutées lors d'une restauration apparaissent dans le texte, mais, lorsque cela était possible, ces pages n'ont pas été filmées.
- ☐ Additional comments:/
Commentaires supplémentaires:

L'Institut a microfilmé le meilleur exemplaire qu'il lui a été possible de se procurer. Les détails de cet exemplaire qui sont peut-être uniques du point de vue bibliographique, qui peuvent modifier une image reproduite, ou qui peuvent exiger une modification dans la méthode normale de filmage sont indiqués ci-dessous.

- ☐ Coloured pages/
Pages de couleur
- ☐ Pages damaged/
Pages endommagées
- ☐ Pages restored and/or laminated/
Pages restaurées et/ou pelliculées
- ☒ Pages discoloured, stained or foxed/
Pages décolorées, tachetées ou piquées
- ☒ Pages detached/
Pages détachées
- ☒ Showthrough/
Transparence
- ☐ Quality of print varies/
Qualité inégale de l'impression
- ☐ Includes supplementary material/
Comprend du matériel supplémentaire
- ☐ Only edition available/
Seule édition disponible
- ☐ Pages wholly or partially obscured by errata slips, tissues, etc., have been refiled to ensure the best possible image/
Les pages totalement ou partiellement obscurcies par un feuillet d'errata, une pelure, etc., ont été filmées à nouveau de façon à obtenir la meilleure image possible.

This item is filmed at the reduction ratio checked below/
Ce document est filmé au taux de réduction indiqué ci-dessous.

10X	14X	18X	22X	26X	30X
<input type="checkbox"/>	<input type="checkbox"/>	<input checked="" type="checkbox"/>	<input type="checkbox"/>	<input type="checkbox"/>	<input type="checkbox"/>
12X	16X	20X	24X	28X	32X

The copy filmed here has been reproduced thanks to the generosity of:

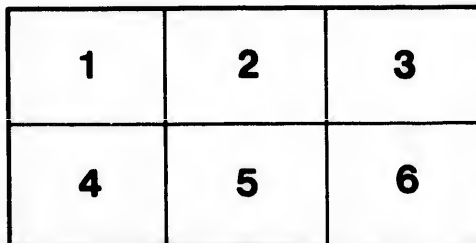
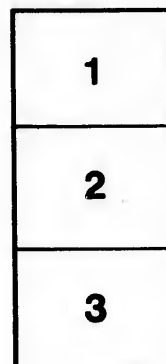
Douglas Library
Queen's University

The images appearing here are the best quality possible considering the condition and legibility of the original copy and in keeping with the filming contract specifications.

Original copies in printed paper covers are filmed beginning with the front cover and ending on the last page with a printed or illustrated impression, or the back cover when appropriate. All other original copies are filmed beginning on the first page with a printed or illustrated impression, and ending on the last page with a printed or illustrated impression.

The last recorded frame on each microfiche shall contain the symbol \longrightarrow (meaning "CONTINUED"), or the symbol ∇ (meaning "END"), whichever applies.

Maps, plates, charts, etc., may be filmed at different reduction ratios. Those too large to be entirely included in one exposure are filmed beginning in the upper left hand corner, left to right and top to bottom, as many frames as required. The following diagrams illustrate the method:



L'exemplaire filmé fut reproduit grâce à la générosité de:

Douglas Library
Queen's University

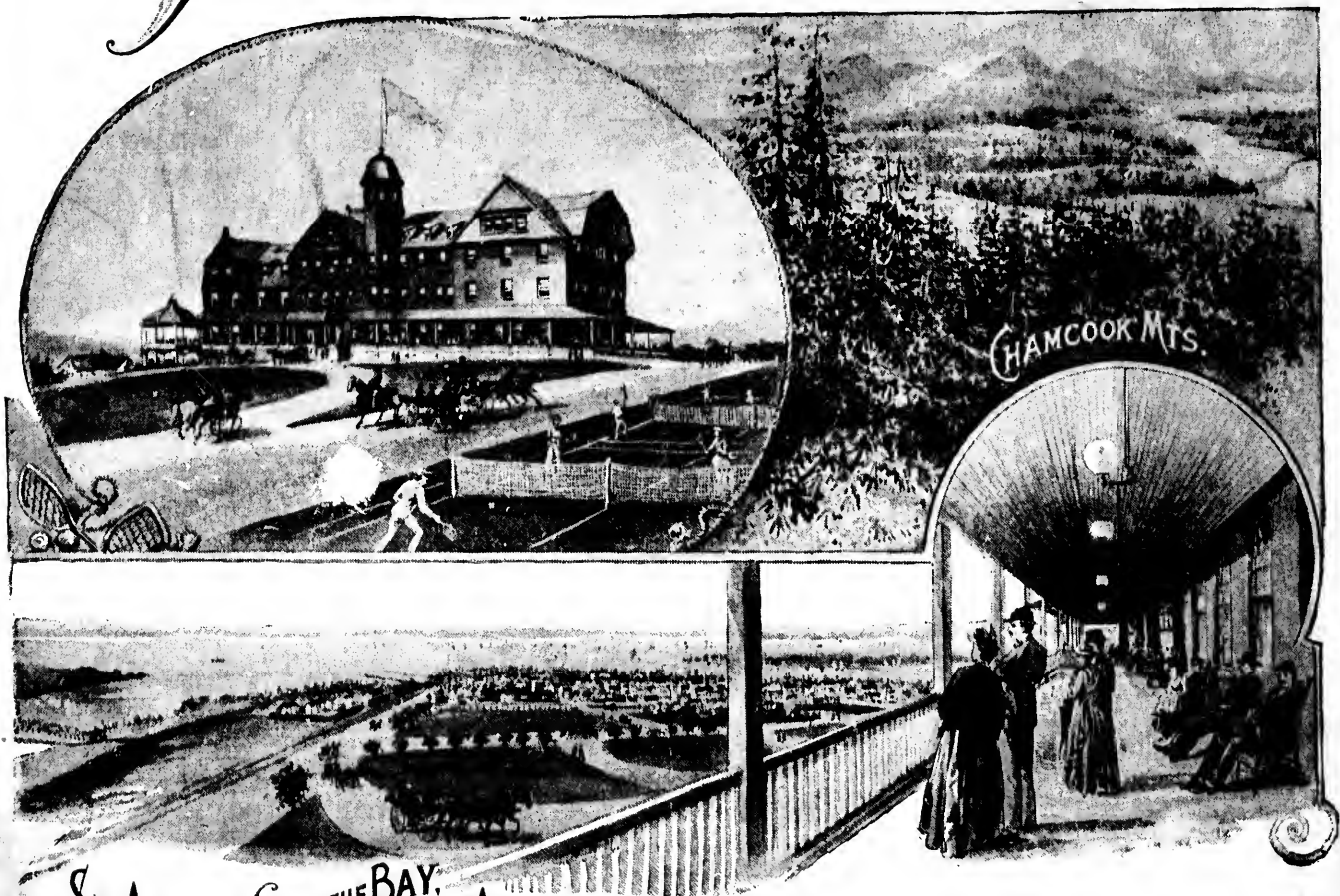
Les images suivantes ont été reproduites avec le plus grand soin, compte tenu de la condition et de la netteté de l'exemplaire filmé, et en conformité avec les conditions du contrat de filmage.

Les exemplaires originaux dont la couverture en papier est imprimée sont filmés en commençant par le premier plat et en terminant soit par la dernière page qui comporte une empreinte d'impression ou d'illustration, soit par le second plat, selon le cas. Tous les autres exemplaires originaux sont filmés en commençant par la première page qui comporte une empreinte d'impression ou d'illustration et en terminant par la dernière page qui comporte une telle empreinte.

Un des symboles suivants apparaîtra sur la dernière image de chaque microfiche, selon le cas: le symbole \longrightarrow signifie "A SUIVRE", le symbole ∇ signifie "FIN".

Les cartes, planches, tableaux, etc., peuvent être filmés à des taux de réduction différents. Lorsque le document est trop grand pour être reproduit en un seul cliché, il est filmé à partir de l'angle supérieur gauche, de gauche à droite, et de haut en bas, en prenant le nombre d'images nécessaire. Les diagrammes suivants illustrent la méthode.

The Algonquin St. Andrews, N.B.



ST. ANDREWS AND THE BAY,
FROM THE ALGONQUIN.

F5012. 1895. A396

The EDITH and LORNE PIERCE
COLLECTION of CANADIANA



Queen's University at Kingston

1 Summer Hours.

An idle sort of place, where all day long
It seems like evening with the day's work done,
Where men haste not, because there is no haste,
And toil but little, for they've little need;
A restful corner, where the August breeze,
From softly listening, finger on the lip,
At length from listlessness falls fast asleep,
Till there is no sound heard save, now and then,
Low thunder of a wagon on the bridge,
Some shrill cicada from his citadel
Beneath a thistle, challenging the noon,
The whet of scythe and heavy hoist of sail.
The dip of unseen oars, monotonous,
And softly breathing waves that doze below,
Too weak to more than turn themselves, complain,
And doze again.

The Algonquin,

ST. ANDREWS, N.B.,

Opens its Fourth Season

ON

JULY 1, 1892,

Under the continued management of

Mr. ALBERT MILLER,

for four years manager of "The Kushaqua," near
Albany, N. Y., and previously connected
with leading summer hotels
of the country.

4,000 GUESTS

In the past three seasons accord The Algonquin the
reputation it claims, of a

FIRST-CLASS HOTEL

IN A

FIRST-CLASS LOCATION.

RATES PER DAY - - - - - \$3.00 TO \$5.00.

RATES PER WEEK - - - - - \$15.00 AND UPWARD.

SPECIAL TERMS FOR EARLY JULY AND SEPTEMBER, AND FOR LONG
PERIODS OR FOR FAMILIES.

Address

ALBERT MILLER, Manager,

OR, UNTIL JUNE 15,

ST. ANDREWS, N.B.

BOX 147, BOSTON, MASS.

"The Algonquin."

OPEN JULY, AUGUST AND SEPTEMBER.

Its Attractions and Advantages.

Location. — Facing the bay and 150 ft. above it; the
land on all sides slopes sharply to the sea, giv-
ing absolutely perfect drainage; sewage carried
2,000 ft. to the ocean.

Rooms. — Every one has a salt-water outlook, wire-
spring beds and finest hair mattresses.

Verandas. — Two hundred and forty ft. long and
fourteen ft. wide; views covering seventy-five
miles in extent.

Parlor and Dining-Room. — Windows on three sides
views unobstructed.

Steam Elevator. — To all the floors.

Three Stairways. — Seventy ft. apart, for safe egress.

Water Supply. — Absolutely pure; drawn through
solid rock from a depth of 120 ft., and forced
to hotel, a distance of 1,700 ft.

Open Fireplaces. — In all public rooms and many of
the guests' rooms.

Steam Heat. — Radiators on each floor.

Bath and Toilet Rooms. — Throughout the house
Choice of fresh and salt water baths. Closets
flushed with salt water.

Fine Sea-Bathing. — In Katy's Cove, within 1,700
feet of the Algonquin, special bathing-houses
and beach.

Observatory. — On roof of house. In 75 miles of
Mountain, River, Bay and Island scenery is
presented a panorama of unexcelled beauty.

Livery. — All varieties of vehicles and saddle-horses.

Telegraph. — Western Union office in hotel rotunda.

Orchestra. — Day and evening.

Cuisine and Service. — Of the highest order.

Accessories. — Gas, electric bells, writing and smoking
rooms, billiards, lawn tennis, croquet, steam
laundry.

3051165

HOW TO REACH ST. ANDREWS.

Based on latest information obtainable at time of going to press regarding summer schedules of 1892.

ALL PRINCIPAL LINES HAVE EXCURSION TICKETS TO ST. ANDREWS ON SALE, AND BAGGAGE CAN BE CHECKED THROUGH TO DESTINATION.

FROM WASHINGTON. Penn. R.R. 7.50 a.m., Baltimore 8.50 a.m., Philadelphia 11.00 a.m., Jersey City 1.15 p.m. by the Colonial Express (Pullman Vestibule Train), avoiding change in New York, connecting in Boston with 9.45 p.m. train, except Saturdays, via Boston & Maine and Maine Central Railroads, reaching St. Andrews next noon.

FROM WASHINGTON. 2.50 p.m. by B. & O. R.R. (Poughkeepsie Bridge Route), Baltimore 3.40 p.m., Philadelphia 6.45 p.m. Arrive Boston 8.20 a.m., taking Boston & Maine evening trains for St. Andrews, except Saturdays.

FROM THE WEST. Refer to summer time-tables of Canadian Pacific, Chicago & Grand Trunk, Michigan Central, Lake Shore, Bee Line and Wabash routes, regarding trains reaching Montreal, Buffalo, and Niagara Falls, at which points connections are made with the lines named below.

FROM CHICAGO. In through Wagner Palace cars, via the Niagara Falls, White Mountains and Bar Harbor Line, leaving Chicago from Michigan Central Depot at 10.10 p.m., via Buffalo, Niagara Falls, White Mountains and Portland, arriving in Bangor, Me., the second morning, St. Andrews noon same day.

FROM NEW YORK AND THE SOUTH. Passengers via Fall River Line, Stonington Line, Springfield Line, Shore Line, and New York & New England Line, connect in Boston as below.

FROM NEW YORK. Maine S.S. Co., Pier 38, East River, at 5 p.m. Mondays, Wednesdays and Saturdays, connecting at Portland with Maine Central R.R.; and also with International steamers leaving Portland Wednesdays and Saturdays at 5 p.m. Single fare, all steamer, \$9.00; Round trip, all steamer, \$15.00; Single fare, steamer and rail, \$11.50; Round trip, steamer and rail, \$18.00.

FROM NEW YORK VIA BAR HARBOR AND EASTPORT. Mallory S.S. Lines, Pier 21, East River, Steamer "Winthrop," Saturdays 5 p.m., touching at Bar Harbor and Eastport; arriving St. Andrews Mondays. Returning, leave St. Andrews Wednesdays, Bar Harbor same evening; arrive New York Friday. Fare to St. Andrews, \$10.00; round trip, \$19.00.

FROM NEW YORK, BY THROUGH RAIL AND SOUND LINES to Boston, there connecting as follows: —

FROM BOSTON, BY BOSTON & MAINE R.R.

At 8.00 a.m. (by through Pullman cars, via Maine Central and Canadian Pacific Railways), St. Andrews same evening.

Single fare, \$8.00; Round trip, \$13.00.

At 7 p.m. (except Saturdays) by Boston & Maine R.R., arriving St. Andrews noon next day.

At 9.45 p.m. (except Saturdays) by Boston & Maine R.R., arriving St. Andrews noon next day.

At 1.00 p.m. Wednesdays and Saturdays by Boston & Maine R.R.; connect at Portland with International Steamers, arriving St. Andrews noon next day. Single fare, \$6.00; Round trip, \$11.00.

FROM BOSTON, DIRECT FOR EASTPORT, by the International Line Steamers. At 5 p.m. Mondays, Tuesdays, Thursdays and Fridays, arriving St. Andrews, twelve miles distant, at noon next day. Single fare, \$4.50; Round trip, \$8.00.

FROM THE WHITE MOUNTAINS, BAR HARBOR, POLAND SPRINGS, ETC., by Maine Central R.R.; arrive St. Andrews same day.

FROM MONTREAL, OTTAWA, KINGSTON AND TORONTO, with Soo Line connections from Minneapolis, St. Paul and the West, Canadian Pacific Short Line through trains, with Parlor and Sleeping cars, reach St. Andrews in twelve hours.

FROM MONTREAL AND THE WEST, through the White Mountains, by Canadian Pacific and Maine Central R.R.'s, connecting at Portland with Pullman trains for St. Andrews.

FROM MONTREAL AND THE WEST. The Grand Trunk Railway Pullman cars connect at Portland with Maine Central R.R. trains for St. Andrews.

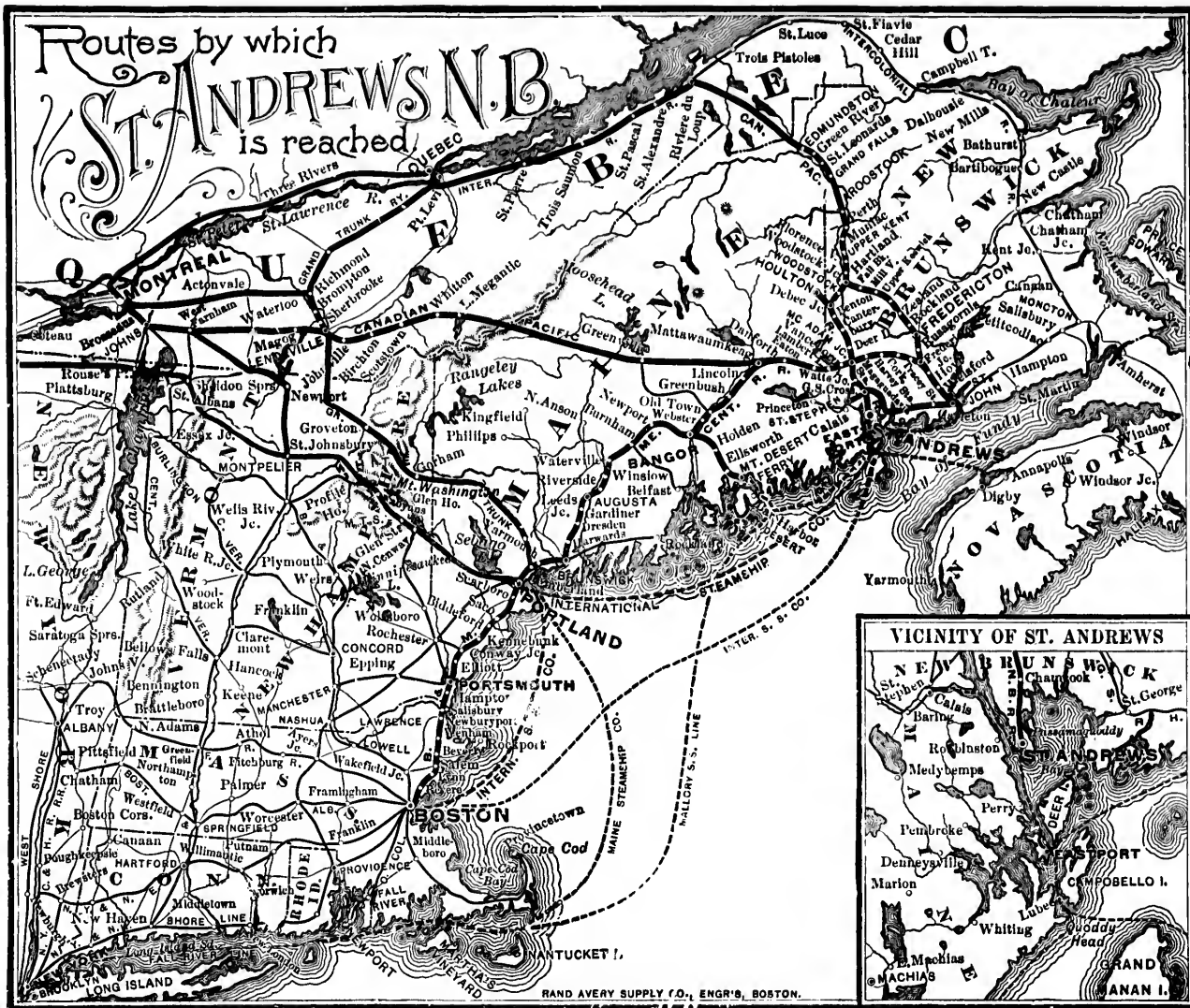
FROM ST. JOHN. All Canadian Pacific trains connect at McAdam Junction for St. Andrews.

FROM ST. JOHN. All Steamers of the International, Maine S.S. Co. and Mallory S.S. Co. Lines touch at Eastport. Arrive St. Andrews at noon same day.

BETWEEN EASTPORT, ST. ANDREWS AND CALAIS, ME. The Frontier Steamboat Co. runs a daily boat (Sundays included), touching morning and afternoon at St. Andrews.

BETWEEN CALAIS, ST. ANDREWS, DEER ISLAND AND EASTPORT. The Excursion Steamer "Arbutus" will make frequent trips, and can be chartered for special trips.

Routes by which ST. ANDREWS N.B. is reached





ST. CROIX RIVER.
SEPARATING MAINE FROM NEW BRUNSWICK.

St. Andrews,
NEW BRUNSWICK.
The ideal Sea-Side Resort
and Health Elysium.



❁ ST. ANDREWS, N. B. ❁

A glance at the accompanying map shows St. Andrews to be situated on a peninsula five miles in length, extending into Passamaquoddy Bay, which is seventeen miles long by six $\frac{1}{2}$ width, and in point of attraction has but few rivals, with strong points in common and being often compared with the Bay of Naples.

The outer edge of the bay is encircled by mountainous island ranges, which serve to guard both the bay and peninsula from the objectionable fogs of the eastern coast. During the summer months cool breezes prevail, the thermometer seldom reaching 85 degrees Fahrenheit. The town lies on a gentle slope, rising to an altitude of 150 feet in a distance of 2,000 feet from high-water mark. Beyond the town, and for a distance of two miles, sloping hills, attaining 250 feet in height, form an amphitheatre overlooking the town, St. Croix River, coast of Maine, and island-studded bay.

The entire vicinity is traversed by the finest roads. Salt and fresh water fishing is had within an hour's sail or ride, while the bay and lakes afford unsurpassed yachting and boating facilities.

The curative properties of the balsam-laden atmosphere, the general air of restfulness, together with the entire absence of mosquitoes and malaria, have made St. Andrews long and extensively known as *an elysium for the hay fever patient*, jaded tourist, pleasure seeker and sportsman.

The town, of 1700 population, has numerous hotels and boarding-houses, five excellent churches, schools, livery stables, stores, markets, telegraph office, and a weekly newspaper, "The St. Andrews Beacon," while yachts in charge of reliable captains, canoes with or without their Indian owners, and row boats can be hired on very reasonable terms.

— TO — HAY FEVER SUFFERERS.

Experience has shown that few places possess the elements of situation, atmosphere and surroundings required to afford complete exemption to the majority of hay fever patients, and, therefore, he who boldly asserts that any one place possesses all these attributes must, to carry conviction, bring corroborative evidence of an unquestioned character from persons who have fully tested the merits of the locality, and will put themselves on record in that regard. For years previous to 1889 the hay fever sufferers who sought St. Andrews were confined to those who by chance or the advice of preceding acquaintances were led thither. It was by such asserted that entire relief was found there, but until the season of 1889 no effort was made to certify the favorable reports which existed.

The completion of "The Algonquin" induced many hay fever sufferers — some of them cases of five to forty years' standing — to visit the place for the first time. Their cases were watched very closely, and we can truthfully say that of the many persons afflicted with hay fever who visited St. Andrews during the hay fever term there was *not a single instance* among those who arrived previous to an attack where the disease made its appearance, and those suffering from it upon arrival were freed from it within forty-eight hours.

From the numerous certificates bearing upon this point a sufficient number of names as references, representing various sections of the country, are herewith presented.

The month of September at St. Andrews is one of the most delightful of the year, balmy, pleasant days being the rule; and while the mornings and evenings may be cool, that fact causes no discomfort at "The Algonquin," with its steam heat and numerous open fire-places.

SUMMER HOMES.

Probably no point along the coast of Maine and New Brunswick has a more favored location than St. Andrews. The old place has been a sort of "Sleeping Beauty" of the seaside for generations. It was marked and admired long before it was dreamed of as a possible summer resort, and always has had a certain patronage of pleasure-seekers, even in times when summer excursions, trips, or vacations had little or no plan or part in the life of any class.

Its marked characteristics led to the formation of the St. Andrews Land Company, and their purchase of property in the choicest locations, with a view of securing for those desiring summer homes selected spots from every one of which panoramic views are had. Close to the water in Indian Point Park (30 feet above sea level), and scattered along the rising ridge of Barrack Hill (150 feet high), until reaching the amphitheatre of encircling hills (220 to 250 feet above tide water), stretching across the peninsula from Passamaquoddy Bay on the east to the St. Croix River on the west, are presented building sites which are adapted to meet the most diversified tastes, and can be purchased subject to reasonable and proper restrictions.

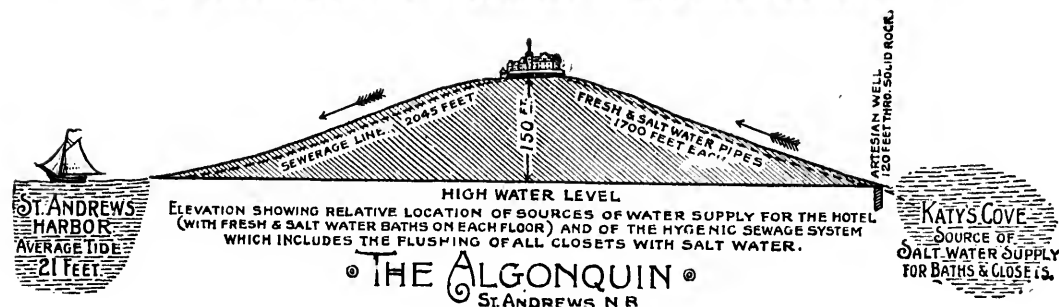
Plans of the properties may be seen at the Company's offices in Boston and St. Andrews, and correspondence relating thereto should be addressed to

EUGENE F. FAY, Secretary,
117 Franklin Street,
Boston, Mass.

REFERENCES.

Dr. EGBERT GUERNSEY, 528 5th Avenue . . .	New York.
JOHN ABENDROTH, Esq., Abendroth & Root Mfg. Co.	"
A. G. BIGELOW, Esq., 11 Pine St.	"
CHAS. M. MARSH, Esq., 111 Broadway . . .	"
H. J. STORRS, Esq., Comptroller's Office . .	"
GEO. B. RAYMOND, Mutual Life Insurance Co.	Morristown, N.J.
U. C. CROSBY, Esq., Phenix Insurance Co. .	Boston.
JASPER N. KELLER, Manager N. E. Tel. and Tel. Co.	"
Rev. JOHN P. LUNDY, D.D., 245 South 18th St.,	Philadelphia.
CHAS. J. BONAPARTE, Atty., 216 St. Paul St. .	Baltimore.
FRANK J. LEWIS, Esq., 1307 L St., N. W. . .	Washington, D.C.
W. C. WHITTEMORE, Esq., 1300 17th St. . .	"
JOHN L. WOODCOCK, Clifton House	Chicago.
FRANK H. PEAVEY, Esq.	Minneapolis, Minn.
GEO. H. NETTLETON, Esq., President K. C., F. S. & M. R.R.	Kansas City, Mo.
WM. STEVENS PERRY, Bishop of Iowa . . .	Davenport, Iowa.
EDWARD C. ELIOT, Esq., 421 Olive St. . . .	St. Louis, Mo.
Dr. GEO. B. ORR, Dean and Prof. of Surgery .	Cincinnati, O.
Hon. EMORY SPEER, U.S. Judge and Vice- President U. S. Hay Fever Association .	Macon, Ga.
HENRY BANKS, Jr.	La Grange, Ga.
Hon. JOHN W. GWYNNE, Judge Supreme Court,	Ottawa.
Sir DONALD A. SMITH	Montreal, Can.
JOHN HOPE, Esq.	"
THOS. R. MERRITT, Esq.	St. Catharine, Ont.
Sir S. LEONARD TILLEY	St. John, N.B.
THISBET ROBERTSON, Esq.	"

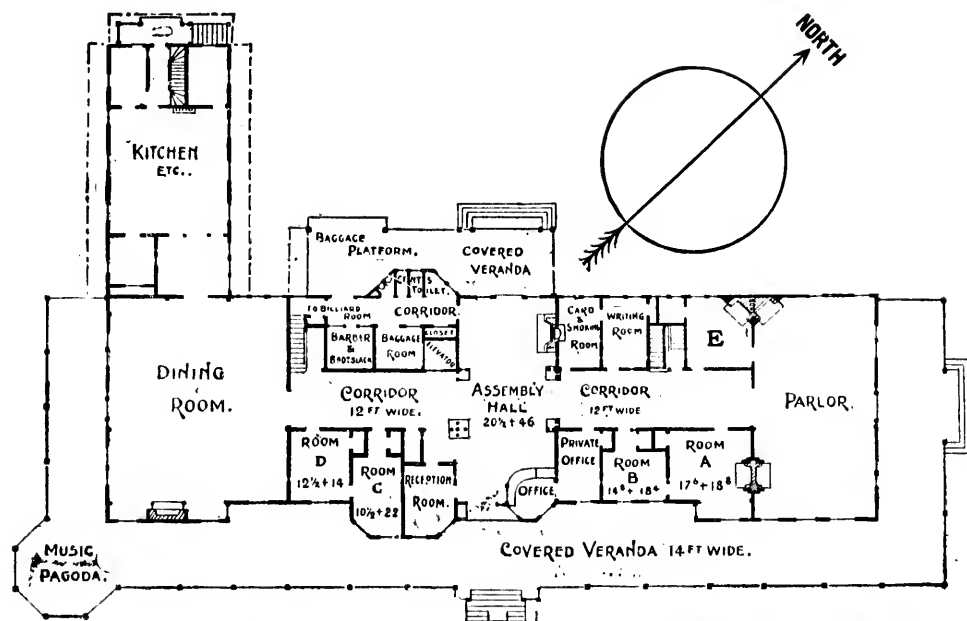
DRAINAGE AND WATER SUPPLY THE VITAL SAFEGUARDS.
An Unanswerable Argument of Hygienic Excellence.



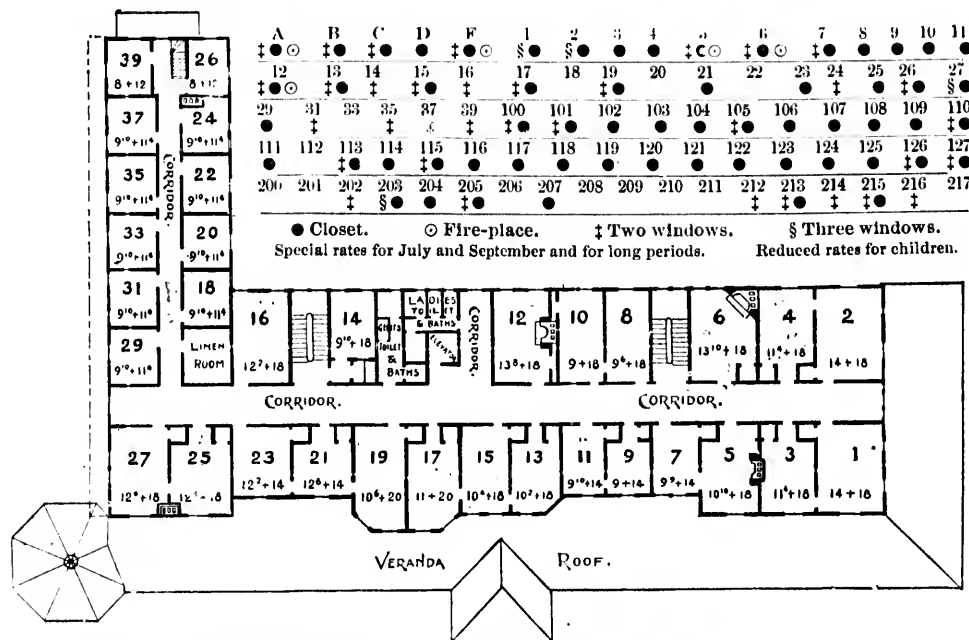
Special attention is called to the above elevation as presenting features too often neglected in choosing a summer home, or place in which to spend one's vacation.

By this sanitary system, all sewage is carried over a third of a mile away from the Hotel, through a perfect series of safety traps to tide water, while all the closets in the Hotel are flushed with salt water, a feature unknown at any other summer resort.

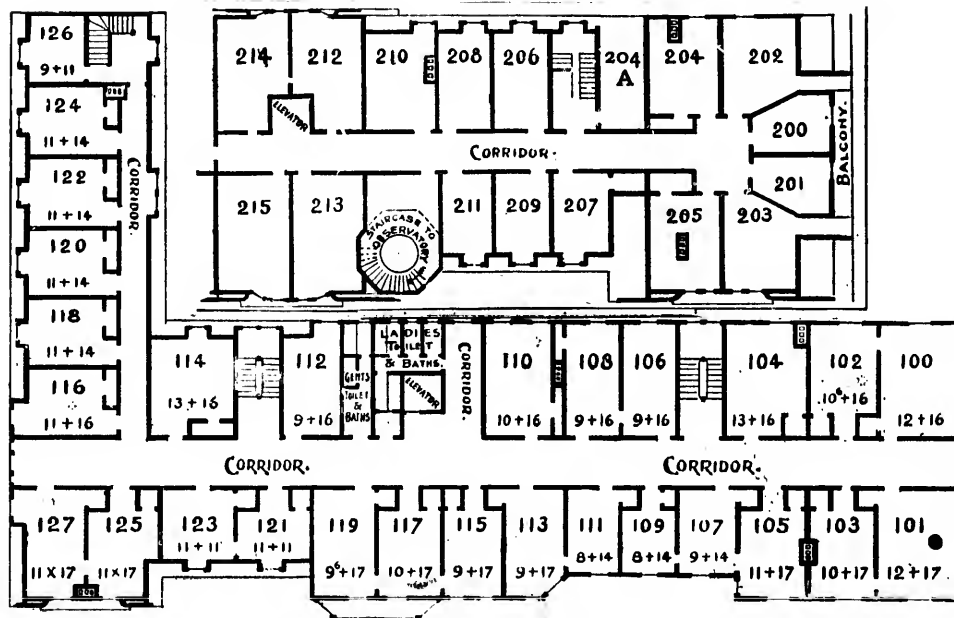
The spring water used in the house has attained a reputation for absolute purity, its analysis showing healthful and curative properties equal to many waters now being bottled and sold throughout the country.



*First Floor,
The Algonquin*



Second floor
The Algonquin



Fourth Floor,
The Algonquin

Third Floor
The Algonquin



