

# CANADIAN Contract Record

*A Weekly Journal of Public Works, Tenders,  
Advance Information and Municipal Progress*

This Paper Reaches Every Week the Town and City Clerks, Town and City Engineers, County Clerks and County Engineers, Purchasers of Municipal Debentures and Leading Contractors in All Lines Throughout Canada

VOL. 15.

TORONTO AND MONTREAL, MAY 18, 1904

No. 14.

## THE CANADIAN CONTRACT RECORD

PUBLISHED EVERY WEDNESDAY

As an Intermediate Edition of the Canadian Architect and Builder.

Subscription Price, \$2 per annum, payable in advance.

## THE C. H. MORTIMER PUBLISHING COMPANY

of Toronto, Limited,  
CONFEDERATION LIFE BUILDING, TORONTO.  
Telephone Main 2562.

Branch Offices:

38 Alliance Building, Montreal,  
Telephone Main 2999.

310 McIntyre Block, Winnipeg.

21 Great St. Helen's, London, England.

Advertising Rates on application.

Subscribers who may change their address should give prompt notice of same. In doing so give both old and new address. Notify the publishers of any irregularity in delivery of paper.

## SEALED TENDERS

Will be received by the Council of the Village of Beaverton, up to SATURDAY, JUNE 4TH, 1904, for constructing Granolithic Sidewalks; parties tendering are required to supply all material.

C. A. PATERSON, Clerk.

## TENDERS WANTED

Tenders will be received, addressed to the undersigned, up till 6 o'clock WEDNESDAY, MAY 25TH, 1904, for the several trades required in remodelling Separate School Building in City of St. Thomas, Ont., including Masonry, Carpenter work, Painting, Plumbing and Low Pressure Steam or Hot Water Heating. Plans and specifications and all information can be received at the office of N. E. Darrach, Architect, St. Thomas, Ont. The lowest or any tender not necessarily accepted.

JAMES EGAN,  
Chairman Separate School Board,  
St. Thomas, Ont.

## TENDERS WANTED

FOR

## Drainage Work.

Sealed tenders marked "Tenders for Drainage Work" will be received by the undersigned Clerk of the Township of Mountain up to the hour of twelve o'clock, noon, of SATURDAY, THE 4TH DAY OF JUNE, 1904, for the construction of the Castore Extension and Right Concession Drains. The estimated amount of excavation required is as follows:

Castore extension	53,272 yards.
Highway bridges	
Eight Concession Drain	23,540 yards.
Culverts	1

Plans and specifications and form of contract to be entered into for the construction of the work may be seen and form of tender obtained at the office of Dunn & Fullerton Township Engineers, Winchester, Ont.

Dated this 4th of May, A. D., 1904.

HUGH MARTIN,  
Hillville, Ont.,  
Township Clerk.

## NOTICE

Sealed tenders, addressed to the undersigned, will be received up to 2 o'clock p.m. on FRIDAY, THE 27TH DAY OF MAY NEXT, for Cement Concrete Flooring for the Grand River Bridge at Conestogo, 110 feet long, and 18 feet in the clear, for either expanded metal or buckeyed plating cement flooring, 6 inches thick in centre, and 4 inches at sides.

The Council do not bind themselves to accept the lowest or any tender. Parties tendering must name responsible surety, or make a deposit as may be agreed upon.

By order of the Council.

JOHN L. WIDHMAN,  
Clerk of the Township of Woolwich.

Clerks Office, St. Jacobs, Ont.,  
May 6th, 1904.

## BRIDGE

### Tenders for a

### Steel Bridge and Concrete Abutments

Will be received by Magnus Henderson, Township Clerk of Peel, Gleadow P. O., up till the evening of WEDNESDAY, MAY 25TH, 1904.

The bridge spans the Conestoga River about 8 miles west of the town of Elmira and is 155 feet in length.

Plans and specifications may be seen at the Township Clerk's office or at the office of the engineer.

A deposit in the form of a marked cheque for the sum of \$100 must accompany each tender. The lowest or any offer not necessarily accepted.

J. HUTCHEON Engineer,  
Guelph, Ont.

May 17th, 1904.

### CONTRACTS OPEN.

NEWCASTLE, N.B.—J.O. Anderson has commenced work on a three-storey furniture factory.

IBERVILLE, QUE.—It is reported that the C. P. R. purpose establishing shops here.

WINGHAM, ONT.—Walker & Clegg have just commenced work on a new furniture factory.

PFTERBORO, ONT.—There will be five miles of granolithic walks built in town this year.

WALKERVILLE, ONT.—Kerr Bros. are having plans prepared for enlargement of their plant.

FREDERICTON, N. B.—The City Council have decided to purchase a chemical fire engine.

HUNTSVILLE, ONT.—New tenders on revised plans have been asked for erection of school building.

BARRIE, ONT.—F. Marr will receive tenders up to 28th inst. for steam heating of public school in West Ward.

BEAVERTON, ONT.—Bids desired by C. A. Patterson up to June 4th for constructing granolithic sidewalks.

COBOURG, ONT.—Tenders are wanted by 20th inst. for construction of a rifle range. Plans at office of N. F. Mac-Nachlan.

THESSALON, ONT.—A by-law to raise \$1,500 for building a steel bridge over the Thessalon river will be voted on May 23rd.

HUNTSVILLE, ONT.—Bids wanted by Thomas N. Cullon, Town Clerk, up to June 1st for \$15,000 5 per cent. debentures.

NIAGARA FALLS, ONT.—H. G. Robb is this week taking tenders on building a residence, from plans by L. A. Dietrick.

GUELPH, ONT.—The C. P. R. will commence work at once on the building

## TOWN OF OSHAWA

## WATER WORKS AND SEWERAGE SYSTEM

Sealed tenders will be received by the Board of Water Commissioners, addressed to the Chairman, until 7 p.m. on THURSDAY, MAY 27TH, 1904, for the construction of a system of waterworks, subdivided into the following contracts:

- A (1)—Trenching, etc.
- B—Pump House.
- C (1)—Water Tower.
- C (2)—Foundation.
- D—Cast Iron Pipes.
- E—Hydrants, Valves, etc.
- G—Pumping Machinery.
- H—Boilers.

Sealed tenders will also be received at the same date by the Mayor for the construction of a system of sewers, the contractor to furnish all labor and materials therefor.

Plans, specifications, etc., may be examined at the office of the Town Clerk, Oshawa, or at the office of the Chief Engineer, No. 103 Bay street, Toronto, on and after May 10th, 1904.

W. F. COWAN, Esq., Chairman Board of Water Com.

F. L. FOWKE, Esq., Mayor.

THOS. MORRIS, Esq., Town Clerk.

WILLIS CHIPMAN, C.E., Chief Engineer.

## TO CONTRACTORS.

Tenders will be received by the Corporation of the Town of Orillia up to 2 p.m. on the 25TH DAY OF MAY, INSTANT, for Constructing and Boring a tunnel through granite rock at their power plant at the Severn River. The tunnel will be 12 x 12 and about 1,500 feet long.

Plans and specifications may be seen at the office of C. E. Grant, Town Clerk, Orillia. The lowest or any tender not necessarily accepted.

May 11, 1904.

JOHN McCOSH,  
Mayor.

of their extension from this city to Goderich.

**HALIFAX, N. S.**—Plans have been prepared and tenders invited for new Young street school. W. J. Busch is architect.

**LONDON, ONT.**—The City Engineer has presented a report on the construction of a permanent breakwater for West London.

**REGINA, N.W.T.**—P. McAra, jr., desires bids for 25th inst. for erection of Presbyterian church, of hollow cement block construction.

**NEW WESTMINSTER, B. C.**—The Grand Jury has recommended that proper heating apparatus be installed in the provincial jail.

**ATHENS, ONT.**—B. Dillon, architect, Brockville, has been commissioned to prepare plans for an \$80,000 town hall to be built here.

**ST. MARYS, ONT.**—A by-law guaranteeing the bonds of the Church & Watt Co. to establish a factory here was carried last week.

**AYR, ONT.**—Tenders received by Joseph Wrigley up to 28th inst. for building a bridge 400 feet in length across the Grand river 3 miles below Galt.

**RICHMOND, QUE.**—R. D. McConnell, hydraulic engineer, Montreal, will report to the Council upon the construction of a system of fire protection.

**BRANTFORD, ONT.**—A. K. Bunnell will receive tenders up to 26th inst. for erection of Oak street school. Plans by Stewart, Stewart & Taylor.

**CALGARY, N. W. T.**—The City Council have decided to submit a by-law to the ratepayers to raise \$20,000 for purchase of site for new city hall.

**SOURIS, MAN.**—Bids received by S. S. Smith, secretary-treasurer of the corporation, up to June 15, for purchase of \$12,500 4½ per cent. debentures.

**NELSON, B. C.**—Clark Bros., of Seattle, are preparing plans for the saw mill which the McGolderick Lumber Co., of Minneapolis, purpose building here.

**PARIS, ONT.**—John Penman desires tenders by 21st inst. for masonry, carpentry, structural ironwork, plastering and painting and glazing of a Y.M.C.A. building.

**PORTAGE LA PRAIRIE, MAN.**—Willis Chipman, C. E., of Toronto, has been engaged to prepare plans for waterworks and sewerage system for this town.

**BRANDON, MAN.**—The City Council have authorized the issue of \$90,000 of debentures for moving the pumping station and extending the waterworks system.

**ST. JOHN, QUE.**—The Central Vermont Railway are having plans prepared for a combined railway and vehicular bridge across the Richelieu river at this point.

**ORILLIA, ONT.**—Bids invited by John McCosh, mayor, up to 25th inst. for constructing a tunnel through granite rock at the power plant at Ragged Rapids.

**WOODSTOCK, ONT.**—The late W. M. Grey bequeathed a large sum of money to St. Paul's church to be devoted to installing a set of chimes and the erection of a new building.

**EAST TORONTO, ONT.**—The proposed waterworks system for this village will, according to the estimate of Joan Galt, C.E., cost \$55,000. Electric pumping is recommended.

**ST. CATHARINES, ONT.**—The Department of Railways and Canals at Ottawa will receive tenders up to 25th inst. for power and telephone submarine cables for the Welland canal.

**KINGSTON, ONT.**—R. A. Ross, E. E., Montreal, has been engaged by the city to estimate the cost of necessary improvements to the plant of the Light, Heat & Power Co., now owned by the city.

**PEMEROKE, ONT.**—B. Leacy desires tenders by June 2nd for construction of wooden bridge over Hale's creek.—H. A. Thibodeau will build a business block on Pembroke street.

**GALT, ONT.**—The Galt Down Draught Furnace Co. has applied for a charter. It is proposed to build a one-storey factory 60x150 feet. T. Montague will be manager.

**PERTH, ONT.**—J. R. Mitchell will receive tenders up to 28th inst. for excavating and walling of a fire tank for the town.—Tenders close this week for construction of 4,500 square feet of granolithic sidewalks.

**GODERICH, ONT.**—H. W. Thomson will build a residence.—H. A. Grey, C.E., Toronto, has prepared plans for the proposed breakwater in the harbor here and tenders will shortly be invited. A concrete superstructure is stipulated.

**GUELPH, ONT.**—McPhie & Mahoney, architects, have prepared plans for a fruit warehouse for Hugh Walker & Sons; main building 100x50 feet, two stories and basement, pressed brick, plate glass front, elevators, cost \$10,000.

**FORT FRANCES, ONT.**—W. F. Brooks states that plans for the large dam to be built by the Backus-Brooks Co., of Minneapolis, are about completed and work is expected to commence in July; estimated cost of power development, \$3,000,000.

**VICTORIA, B.C.**—R. Marpole, superintendent C. P. R., Vancouver, has invited tenders for construction of new wharves and warehouse in this city.—It is likely that the city council will this week authorize the construction of septic tanks.

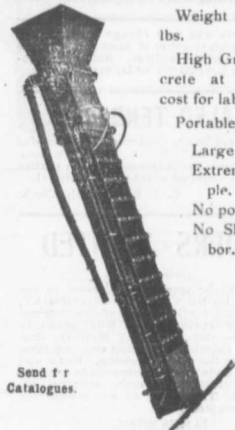
**ST. FRANCIS, QUE.**—The St. Francis Water Power Co. are seeking amendments to their charter to obtain power to borrow \$150,000, to utilize the waters of several lakes, and to extend their operations within a radius of thirty miles of d'Israeli.

**STRATFORD, ONT.**—The G. T. R. will install their own waterworks system, obtaining their supply from a lake about two miles distant.—W. J. Ireland, architect, has prepared plans for residence for George Fink and for alterations to residence for R. Burritt, on corner of Vincent and Norman streets.

**PORT ARTHUR, ONT.**—Plans are being prepared for a general hospital.—The new Methodist church to be built here this year will be stone, seating capacity 800, cost \$30,000.—Plans are being prepared for a new R. C. church, cost \$25,000.—A. G. Seaman has had plans prepared for a fine residence to be built on Dawson ave.

**WINDSOR, ONT.**—Tenders have been asked for erection of new school for Separate School Board.—Dr. Merwin will build a two-storey double house on Victoria ave., from plans from Architect Varney, of Detroit.—Plans have been

## THE PORTABLE GRAVITY CONCRETE MIXER



Weight about 500 lbs.

High Grade Concrete at very low cost for labor.

Portable.

Large capacity. Extremely Simple.

No power used. No Skilled Labor.

Continuous in action.

Send for Catalogues.

Other Mixers and Concrete Mixing Machinery  
**E. F. Dartnell, Montreal**

# The Logomotive and Machine Company OF MONTREAL, LIMITED

NEW YORK OFFICE:  
25 BROAD STREET  
N.Y.

## Structural Steel

FOR ALL PURPOSES

WORKS:  
LONG POINT  
MONTREAL

Principal Office: Imperial Bank Building, MONTREAL

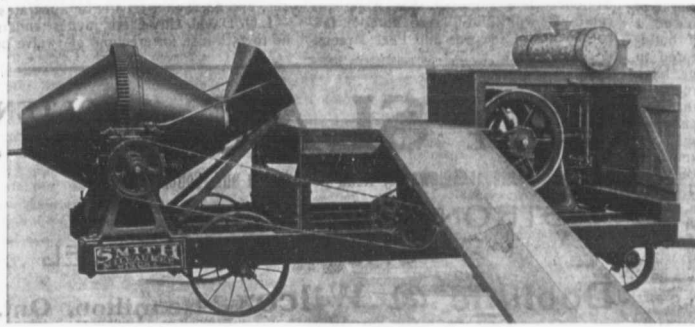
The St. seeking to obtain utilize the o extend of thirty

G. T. R. s system. ke about nd, archi- dence for is to resi- of Vincent

Plans are ospital.— be built ting capa- are being rch, cost ad plans o be built

lers have school for Merwin house on Architect have been

# NEW MODEL STREET CONCRETE MIXER



The New Model **Smith Street Machine** has been designed to meet the demand for a Portable Self-Contained Mixer for street and sidewalk work— Can be had in several sizes equipped with Steam, Gasoline or Electric Power—Write us for further details.

**W. H. C. MUSSEN & CO., Montreal, P. Q.**

prepared for new church for Windsor ave. Methodist congregation, of which Rev. A. Brown is pastor.

**BROCKVILLE, ONT.**—Hon. Clifford Sifton, Minister of the Interior, was here last week en route up the river to locate the sites for the new international docks and pavilions between here and Gananoque, after which work will be started at once.—W. H. Comstock has purchased the property on south-west corner of King and Mill streets and will, it is said, build a three-storey brick structure thereon.

**HAMILTON, ONT.** — T. Beasley, City Clerk, wants tenders by 20th inst. for repairing Trinidad asphalt pavements.—Laurence Munro, architect, has completed plans for a school at Van Wagner's Beach.—George F. Webb has purchased 300 feet frontage on Copeland avenue and will likely build.—D. B. Pratt has purchased a site for a dwelling on South Hewson street, between Young and Maria streets.—The Eagle Knitting Co. will likely erect a new factory.

**OTTAWA, ONT.** — It is rumored that the Dominion Government may acquire the block between Bank, Kent, Wellington, and Cliff streets, and erect a modern supreme court building thereon.—Chief Powell has returned from New York, where he consulted with capitalists who have been negotiating for the purchase of the Clemow property on Rideau street on which to build a large hotel, plans for which have been prepared. It has not been definitely decided to proceed with the project.

**TORONTO JUNCTION, ONT.** — Permits were granted last week as follows: James Bryce, pair dwellings, Mulock avenue; O. Bonham, dwelling, Mulock avenue; T. Wright, dwelling, Clendennan avenue; A. Peters, house, Gilmour avenue; R. J. Nichols, residence, Lakeview avenue; W. Irvine, house, Western avenue; T. J. Lennox, dwelling, Humberside avenue; J. Marr, three dwellings, Union street; Charles Proctor, six dwellings, Union street.—The Public School Board have instructed J. A. Ellis, architect, to advertise for tenders for four room addition to Western ave. school.

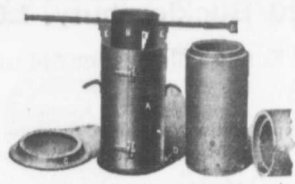
**VANCOUVER, B. C.** — J. Edward Bird and Phillip & Woods intend building on the road from North Vancouver to Moodyville.—The congregation of Mount Pleasant Presbyterian church (Rev. George A. Wilson, pastor) have purchased a lot at corner of Ninth ave. and Quebec

## Portland Cements

**Highest Grade**  
Canadian, German, English and Belgian  
DRAIN PIPES and Connections of all kinds.  
PAVING BRICKS, ENAMELLED BRICKS,  
FIRE BRICKS, FIRE CLAY, Etc., Etc.

### F. HYDE & CO.,

31 Wellington Street - - - MONTREAL



Moulds and the Tile they make.

#### STEEL MOULDS

Latest Improved Making 4" to 36"

#### CONCRETE TILE

All kinds of ROAD MAKING MACHINERY and CONTRACTORS' SUPPLIES.

**SAWYER & MASSEY CO., Limited**  
Hamilton, Canada.

## Portland Cement...

HIGH GRADE GERMAN BRANDS FOR GRANOLITHIC AND ARTIFICIAL STONE SIDEWALKS.

**Sewer Pipes,** Best English Cements. Best Belgian Cements  
**Culvert Pipes, &c.** **W. McNALLY & CO., Montreal**

MOUNTED ON TRUCKS	<p>THE <b>RANSOME MIXER</b></p> <p>Gives the Best Results</p> <p>Send for Circular R.</p> <p><b>JAMES COOPER</b> MONTREAL</p>	WORKS QUICKLY
OR SKIDS WITH AND WITHOUT POWER		MIXES THOROUGHLY
MECHANICALLY PERFECT		NO PARTS TO GET OUT OF ORDER
		SIMPLE OPERATION



street on which to build a new church this summer. — Charles Harrison, of Seattle, is having plans prepared for a five-storey hotel to be built on corner of Pender and Seymour streets, cost \$75,000.

WINNIPEG, MAN.—The Church of England authorities have purchased a site for a new college, the present building which is inconveniently located to be used as a boys' school.—Plans have been prepared for the new Broadway Methodist church.—F. R. Evans has just taken tenders on a double house on stone foundation on Dufferin ave. for J. P. Jones.—V. W. Horwood has taken tenders on a frame hotel of 54 rooms on Maple street, near Fonseca.—J. H. G. Russell is taking tenders on a three-storey and basement stone and brick business block on Portage ave. for McDonald & Wright.—A. & W. Melville, architects, are this week taking bids on a six-storey brick and stone warehouse, corner of King and James streets, for A. C. McRae.—The International Harvester Co. are about to build a four-storey and basement warehouse, 50 x 200 feet, corner of Main and Sutherland streets.—At a meeting of the congregation of St. Luke's church, held last week, plans for a new church were adopted.—The School Board will erect a new building on corner of Burrows and McGregor streets.—H. F. Griffiths, architect, is asking for tenders up to 20th inst. for erection of hotel for James Rae, of Minnedosa.

MONTREAL, QUE.—The Board of Catholic School Commissioners will build a new school at corner of St. Margaret and Lagauchetiere streets.—The Sisters of Providence will build a home for old men at Maisonneuve, plans for which have been prepared by Mr. Bergeron.—As soon as a site is selected for the proposed Montreal Exposition, the work of building will be proceeded with.

—The Allan Steamship Co. have decided to build a large addition to their office building, corner St. Peter and Youville streets.—The cost of rebuilding the cattle sheds at the Eastern Abattoir, according to plans prepared, will be \$14,000.—It is rumored that American capitalists will build a large hotel on the corner of St. Catharine and Peel streets.

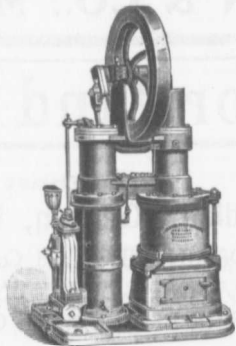
—The supplementary estimates of the Fire & Light Committee call for \$40,000 to replace No. 5 station, \$5,000 for hose and salvage covers, \$4,000 for repairing old water tower, \$10,000 for hydrant valves, \$24,829 for new apparatus, and \$6,165 for repairs to apparatus.—L.O. David, City Clerk, invites tenders up to 25th inst. for erection of twelve or

**BLAST . . FURNACE SLAG A MOLTEN ROCK . . .**

Cement Sidewalks, Road Foundation and Concrete Work

**STRONG AS STONE  
CHEAP AS GRAVEL**

**Doolittle & Wilcox, Hamilton, Ont.**



GENERAL PUMPING CONTRACTORS For All Kinds of Waterworks

—AGENTS FOR—

**BLAKE STEAM PUMPS**

Boiler Feeding, Tanks, Underwriters, etc.  
Also Stovers, Gas and Gasoline Engines.

**RIDER ERICSSON HOT AIR PUMPS**

For Schools, Convents, Hotels, Club Houses, Farms, Country Residences, etc. Water Tanks of all Sizes.  
Towers from 20 to 100 feet high, erected with Tanks complete.

**R. H. BUCHANAN & CO.**

692 CRAIC ST., MONTREAL

**PORTLAND CEMENT, HYDRAULIC LIME, CHINA CLAY**

**E. FREEMAN, 20 Bucklersbury, LONDON, ENG.**



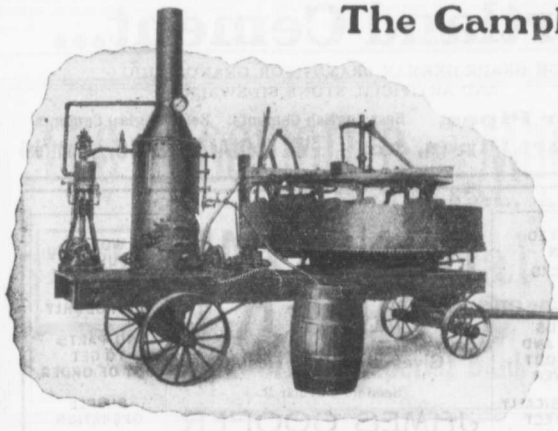
Sole Agent for U.K. and Colonies for Oldest Continental Works



Supplying to Contracts on the Principal Railways, Large Sewage and Sea Defence Works, etc., in England. Will be Pleased to Quote to the Wholesale Trade Only.

CORRESPONDENCE INVITED FOR CONTROL OF BRANDS

**The Campbell Concrete Mixer**



1/4 YARD SIZE MOUNTED ON TRUCKS.

For Mixing Concrete, Cement, Mortar, Plaster and any similar material. The only machine in which material is always in plain sight; that mixes a batch in less than two minutes; that makes a perfect mixture, no matter what class of work is being done.

**Good Roads Machinery Co.  
HAMILTON, ONT.**

more landing sheds at the Eastern cattle market. Plans by L.R. Montbriant.—The Board of Governors of McGill University are considering plans for an extension to the Science building.

TORONTO, ONT.—F. J. Dunbar is having plans prepared for a residence on Roxborough street east.—Ryrie Bros. have recently purchased the property at the north-east corner of Yonge and Shuter streets, and on termination of present leases will erect thereon new buildings.—C. J. Gibson, architect, has prepared plans for a Y.M.C.A. building at Paris, Ont.—It is stated that preliminary plans have been prepared for remodelling and enlarging the Union Station.—Specifications of power and telephone submarine cables for the

Welland canal may be seen at the office of R. J. Parke, E. E., Janes building.—The Office Specialty Co. have purchased the lot adjoining the Toronto Club on south side of Wellington street, and will erect a fine warehouse and office building. The architect is C. J. Gibson, who has prepared plans also for the W. J. Gage

The Best Sand to withstand Fire is the Sand that is all Sand, namely, **Water Washed Sand.** It is the Best. It is the Cheapest.

**SAND & DREDGING, Limited**  
Tel. M. 4507 John Street Dock, TORONTO

**THE BITULITHIC PAVEMENT IS THE TWENTIETH CENTURY PAVEMENT FOR CITIES**

It has been laid in London, Chatham, Montreal and Glace Bay and contracts have been awarded to us for 16,000 sq. yds. in Walkerville, Ont., also for the Driveways around the Dominion Parliament Buildings in Ottawa. Write for particulars and estimates to

**The Warren Bituminous Paving Co., Limited**  
Head Office: 164 Bay Street, TORONTO.



**Iron Clad Portland Cement**

MANUFACTURED AT GLENS FALLS, N.Y., U.S.A.

Highest Grade Artificial Portland Cement. Most finely Ground and Strongest. HAS TEN YEARS RECORD.

Sold by Canadian Dealers, Montreal, Ottawa.

*W. A. COOK, Representative for Canada*  
Street Railway Chambers, MONTREAL.

EDWARD B. MERRILL  
ELECTRICAL & MECHANICAL  
ENGINEER  
16 KING ST. W. TORONTO

**CEMENT TESTING**

**Dr. J. T. Donald**  
Official Analyst to the Dominion Government.  
Established 1880.

Physical and Chemical Tests on all kinds of CEMENTS and RAW MATERIALS. Prompt returns and lowest rates consistent with accurate work.  
112 St. Francois Xavier Street, Montreal, Canada.

**THE PHOENIX BRIDGE & IRON WORKS, LIMITED**  
MONTREAL

**GENERAL STEEL CONTRACTORS**

Large Stock I BEAMS, CHANNELS, ANGLES, TEES, ZEES and PLATES always on hand.

**THE GREY AND BRUCE PORTLAND CEMENT COMPANY**  
of Shallow Lake, Limited

Manufacturers of  
**"HERCULES" BRAND OF PORTLAND CEMENT**

Very finely ground. Unsurpassed for side walks, floors and all work requiring the Highest Grade of Portland Cement. For prices address.

A. D. CREASOR, Sec'y-Treas.  
Head Office, Owen Sound, Ont.

**THE LAKEFIELD PORTLAND CEMENT CO., LIMITED**

Manufacturers and Sales Agents of

**MONARCH BRAND PORTLAND CEMENT**

One grade only—Straight Portland. Unexcelled for Strength, Color and Uniformity.

The Recognized Standard Canadian Brand

Used by the Dominion Government, large Corporations and leading Contractors throughout Canada

Phone, wire or write for prices to

**THE LAKEFIELD PORTLAND CEMENT CO. Limited,** Lakefield, Ont.  
Long distance phone No. 29.

**PORTLAND CEMENT**

SEWER PIPES

FIRE BRICKS

FIRE CLAY

ALEX. BREMNER

50 Bleury Street, MONTREAL



**Be up-to-date**

Be independent. Do not ask a friend to go on your bond. Write to

**The United States Fidelity & Guaranty Co.**

KIRKPATRICK & KENNARD, Mgrs. for Canada.

6 COLBORNE STREET, TORONTO, ONT.

**PORTLAND CEMENT**

**T. M. Morgan**

Manufactures the

**CRESCENT & DIAMOND BRANDS**

AS GOOD AS THE BEST FOR ANY PURPOSE

Office and Works: Longue Point, MONTREAL, QUE.

Long Distance Phone R. 436 Ring 2.

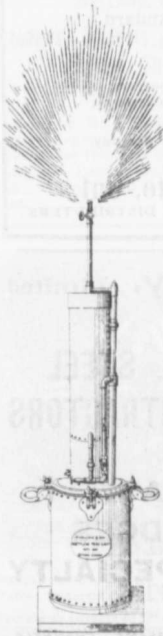


THE BEST LIGHT  
For Contractors,  
Railways, Mines,  
Steamboat Lines,  
Etc.

is the  
**HOLLAND  
PORTABLE  
LIGHT**

Cheaper to operate and cheaper to buy than any other gives 300 candle-power of light and costs less than 3 cents an hour to operate. Suitable for any cut-of-door work in any weather. Delivered at any railroad station in Canada for \$42.00.

**HOLLAND  
PORTABLE  
LIGHT WORKS**  
17-19 Busby Lane,  
Montreal, P. Q.  
Phone Main 2399.  
P. O. Box No. 229



s of the  
call for  
1, \$5,000  
4,000 for  
v appa-  
ratus.  
s tenders  
twelve or

TEN

Ont.

Kinda of  
irka

MPS

s, etc.  
gines.

PUMPS

Farms,  
II Sizes,  
d with

& CO.

CLAY

etc., in

ixer

ment,  
milar  
e in  
plain  
less  
akes  
what

U GO.

Co's new building to be built on the old site.—The Parisian Laundry Co. have purchased the property at north-west corner of King and Portland streets and will build a pressed brick structure four stories high.—Gordon, Mackay & Co. purpose proceeding immediately with the reconstruction of their building on corner of Bay and Front streets.—E. J. Lennox, architect, has completed plans for a large addition to the Western Hospital, Bathurst street, and has plans under way for a hospital to accommodate at least 400 beds, a portion of which will be erected from time to time.—Bond & Smith, architects, want tenders by 21st inst. for erection of a residence on Rosehill avenue.—The congregation of Trinity church, King street east, will build a new parsonage.—The Robert Simpson Co. have purchased a site opposite the Union Station on which to build a factory and warehouse.—Sproatt & Rolph, architects, are making plans for the interior decoration of a city hall now being built at Cape Town, South Africa, estimated to cost \$1,500,000.—The Property Committee of the city council has recommended that the proposed public library be built on the block bounded by University avenue on the west and Edward street on the south.—It is the intention of the Toronto Hotel Co. to purchase two pumping engines for fire protection purposes.—The City Engineer has recommended construction of the following pavements: Kendall avenue, from Wells to Dupont, asphalt, \$7,764; Bleecker street, from Wellesley to Howard, tar macadam, \$6,871; Vanauley street, from Queen to Grange avenue, \$4,364; Avenue road, from Davenport to Toronto Railway tracks, bitulithic, cost \$16,369; Palmerston boulevard, from College to Bloor, cost \$27,039. A number of cement concrete sidewalks and the construction of four underground lavatories in different parts of the city are also recommended.

### DEBENTURES

Municipalities contemplating the issue of Debentures will find it to their advantage to communicate with

**G. A. STIMSON & CO.**  
Investment Dealers

34 And 36 King St. W. TORONTO

### THE CANADIAN INSPECTION COMPANY, LIMITED

Main Office and Laboratories:  
146 St. James Street, MONTREAL  
SPECIALTIES: Inspection of RAILS and all material for BRIDGES, BUILDINGS, and other structures, cast iron pipe, wood and steel railroad cars.  
MANUFACTURE AND ERECTION.  
Expert examination and reports, chemical analyses and physical tests of all kinds.  
Cement Testing.

## THE ONTARIO ASPHALT BLOCK CO., L'T'D.

MANUFACTURERS OF  
**ASPHALT BLOCK PAVING**

Information and samples furnished municipalities on application.

Main Office: WINDSOR, ONT. Works: WALKERVILLE, ONT.

## McGREGOR & McINTYRE, LIMITED

67 to 91 Pearl Street, Toronto, Ont.

### STRUCTURAL IRON WORKS

Fire Escapes, Library Racks, Sidewalk Door, Jail Cells, Iron Stairs, Railings, Etc Etc.

WRITE FOR ESTIMATES.

## Dominion Bridge Co., Ltd.

P. O. Address, MONTREAL, P.Q.  
Works at LACHINE LOCKS, P.Q.

## STEEL BRIDGES

For Railways and Highways  
Piers, Trestles, Water Towers  
Tanks, Buildings, Roofs, Girders,  
Beams and Columns

Toronto Agent: GEO. E. EVANS,  
38 Canada Life Bldg., TORONTO, ONT

## THE Canadian Casualty and Boiler Insurance Co.

Head Office: N.E. Cor. Adelaide and Victoria Streets, TORONTO.

The Steam Boilers of Civic and Municipal Steam Plants, and Corporation and Public Works, Power and Electric Light Plants regularly inspected.

### A STEAM BOILER POLICY

in the Canadian Casualty and Boiler Insurance Company, includes the services of Consulting Engineers free of cost. Write for book to Steam Users.

ALEXANDER SUTHERLAND, D.D., President.  
H. N. BAYE W. S. DINNICK, Vice-Presidents

A. G. C. DINNICK, Managing Director  
A. M. WICKENS, Chief Engineer



## VULCANITE PORTLAND CEMENT

The Recognized Standard  
for Sidewalks

A strictly High-Grade Portland Cement. Pronounced by prominent contractors to be the most Uniform Portland Cement on the market.

One Quality Only. Capacity 5,000 bbls. per day.

**TORONTO POTTERY CO., Toronto, Ont.**

Long Distance Phone North 1787.

DISTRIBUTERS

## The Hamilton Bridge Works Company, Limited

HAMILTON, CANADA



## GENERAL STEEL CONTRACTORS

## HIGHWAY BRIDGES A SPECIALTY

Large Stock I BEAMS, CHANNELS, ANGLES and PLATES always on hand



Established 1898.  
**The Hanover Portland Cement Co., Ltd**  
 Hanover, Ontario.

Manufacturers of the Celebrated  
 "SAUGEEN" Brand of **PORTLAND CEMENT**  
 Prices on application.

**Paving Granite**

Granite Sets for Street Paving.—CURBING cut to any shape ordered.—Fine Rich Colors for Building and Monumental Purposes.  
 Quarries, St. Philippe d'Argenteuil, P.Q.

Address all communications to

**JOS. BRUNET - POTE NES NEIGES, MONTREAL**

**TUNNEL CITY BRIDGE & IRON WORKS**

Steel Bridges and Structural Work.  
 Works: Port Huron, Mich., and Sarnia, Ont.

**HIGHWAY BRIDGES**

Roofs, Steel Buildings and Structural Iron Work of all Descriptions.

**ARTIFICIAL STONE PAVEMENTS**

**SIDEWALKS A SPECIALTY**  
 CORPORATIONS Will do well to consider our work and prices before letting contracts.  
 The Silica Barytic Stone Company of Ontario, Limited.

WALTER MILLS Head Office: General Manager. INGERSOLL, ONT.

**Road Machinery**  
 Fire Appliances  
 Contractor's Plant  
 Stone Crushers, all sizes  
 Steam Road Rollers  
 Road Graders  
 Steam and Gasoline Fire Engines, Etc.

**T. A. MORRISON & CO.**  
 9 Mechanics' Bldg. MONTREAL

**M. BEATTY & SONS**  
 WELLAND, ONT.

Dredges, Ditchers, Derricks and Steam Shovels of various styles and sizes to suit any work.

Submarine Rock Drilling Machinery, Hoisting Engines, Suspension Cableways, Horse-Power Hoisters, Gang Stone Saw's, Centrifugal Pumps for Water, Sand and Gold Mining, and other Contractors' Plant.

**PORTLAND CEMENT**  
 SAMSON BRAND MAGNET BRAND

MANUFACTURED BY

**THE OWEN SOUND PORTLAND CEMENT COMPANY, Limited, Owen Sound, Ont.**  
 Works at SHALLOW LAKE, ONT. Write us for prices

**THE CANADIAN PORTLAND CEMENT COMPANY, LIMITED**

Manufacture "RATHBUN'S STAR" Brand

The Leading Canadian Portland Cement.

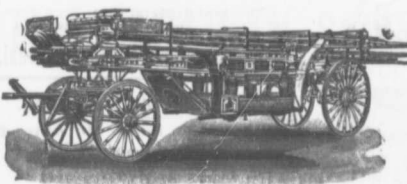
Capacity of Works: 500,000 Barrels Per Year.

SALES AGENTS

**The RATHBUN CO.** St. Lawrence Portland Cement Co.  
 310-312 Front Street West, TORONTO, ONT. 202-203 Board of Trade Building, MONTREAL.

**LIGHTNESS, STRENGTH AND ECONOMY**

Seagrave Patent Trussed Ladders, Trussed Aerial, City Service and Village Hook and Ladder Trucks, Combination Hook and Ladder Trucks and Chemical Engines, Trussed Trucks and Hand Pumps, Combination Hose Wagons and Chemical Engines, Hose Wagons, Combination Hook and Ladder Trucks and Hose Wagons, Chemical Engines, Fire Extinguishers, Hose Reels, Patrol Wagons, Ambulances, Specialty Wagons, Patent Sleigh Runners, and other Modern Fire Fighting Tools.

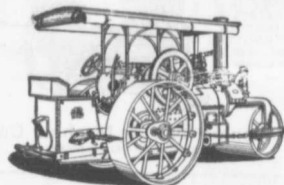


Prompt attention given all inquiries. All goods built to order.

Long Distance Phones 686 and 684 **W. E. SEAGRAVE, WALKERVILLE ONT.**

"WATEROUS"

**ROAD MACHINERY AND FIRE APPARATUS**



FIRE ENGINES in five sizes, with a full line of fire-fighting goods

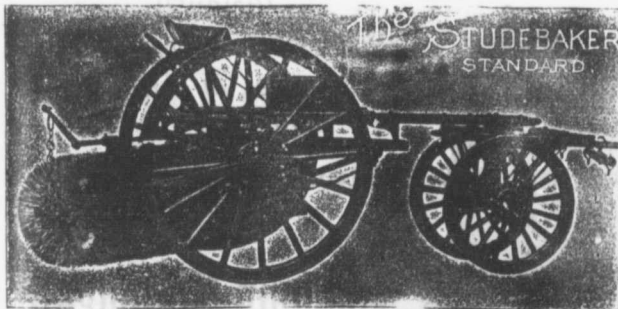
We Rebuild other makes of Fire Engines with our patent Boiler.

**BRANTFORD PITTS DOUBLE ENGINE STEAM ROAD ROLLER**

IN THREE SIZES—10, 12 and 15 ton.

CORRESPONDENCE SOLICITED.

**HUGH CAMERON & CO.,** Selling Agents, 72 Queen St. West, Manning Chambers, TORONTO



**Studebaker Sprinkler**

(PATENT IMPROVED.)

Does not clog or get out of order. Greatest width of spray Can be graded from driver's seat to any volume.

We also make an . . .

**IMPROVED VERTICAL SPRAY**

for Pavements.

**Geo. Heaman, Mfr., London, Ont.**

Stackpole Patent Improved **Street Sweeping Machine** is the Standard of Perfection

Because no sweeper so effectually does the work for which it is designed as "The Studebaker." It Sweeps Clean. No sweeper is constructed with the same degree of care and mechanical precision. It Wears Well. "The Studebaker" has the smallest number of working parts, and has less gearing than any other sweeper made. It is free from all unnecessary complications. With reasonable care it does not get out of order. Send for complete descriptive catalogue

LTD.  
 VILLE, ONT.  
 ITED  
 ells. Iron  
 GES  
 hways  
 Towers  
 Girders,  
 ONTO, ONT  
 and  
 Co.  
 TO.  
 ging Director  
 engineer  
 NT  
 t.  
 UTTERS  
 imited  
 EEL  
 CTORS  
 S  
 ALTY  
 CHANNELS,  
 ys on hand

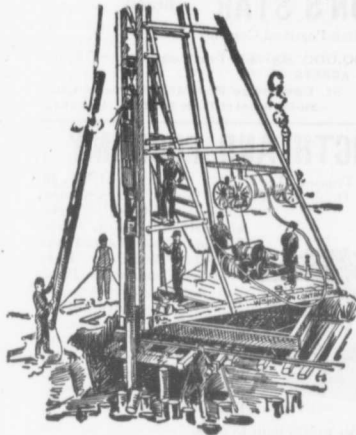
# The Canadian Bridge Co., Limited

WALKERVILLE, ONT.

MANUFACTURERS OF

## RAILWAY AND HIGHWAY BRIDGES

Locomotive Turn Tables,  
Roofs, Steel Buildings and  
Structural Iron Work of all descriptions



### PILE DRIVING

on land or water by Steam Pile Drivers or Drop Hammers.

Portable Boilers  
Hoisting Engines  
Pumping Machinery  
**TO LET**

Bridge Building, Trestle Work, Wharves,  
Dams, Diving Submarine Work and  
General Contracting.

**WM. HOOD & SON**  
10 Richmond Sq. MONTREAL

### THE DELANO-OSBORN ENGINEERING CO., LIMITED

MANNING CHAMBERS TORONTO

CONSULTING, CIVIL, MECHANICAL AND  
ELECTRICAL ENGINEERS.

### MANGANESE Anti-Friction Metal

The Babbitt Metal that  
has become famous.

Syracuse Smelting Works, Montreal.

#### Notice to Contractors.

The Niagara Falls Machine &  
Foundry Co., Limited,

Niagara Falls, Ont.,

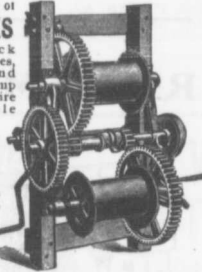
are making a specialty of Improved

**HOISTING AND BUILDING ENGINES.**

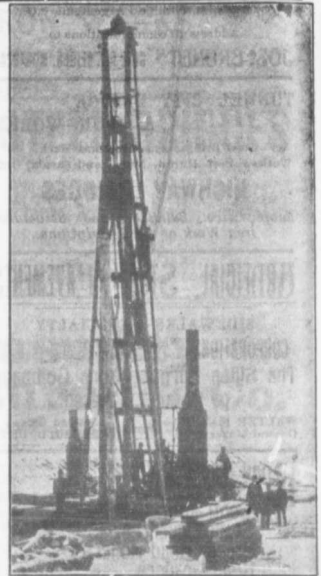
Write for Prices.

Manufacturers of

**DERRICKS**  
and Derrick  
Irons, Sheaves,  
Hooks and  
Chains, Stump  
Pullers, Wire  
and Cable  
Stretchers,  
Tackle Blocks  
Material Ele-  
vators, and  
Dealers in  
HOISTING  
ENGINES  
and Con-  
tractors' sup-  
plies.



**National Hoist & Machine Co**  
423 West 21st Street, Chicago



### PILE DRIVING

and Foundation Work.

By 5-ton Automatic Steam Pile Hammer,  
Water Jet or Drop Hammers, Dock Build-  
ing, Submarine Work and Dredging.

**BUILDING MOVER AND WRECKER**

General Contracting.

**JNO. E. RUSSELL, - Toronto**  
908 Queen St. E.—Phone M. 207.

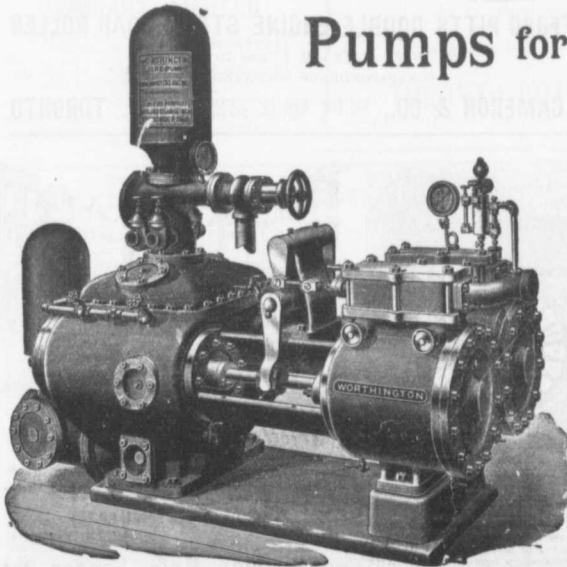
## Pumps for Waterworks

Waterworks Systems  
Installed

Steam, Hydraulic, Electric,  
Gasoline, Air Lift and  
Automatic Rams.

**Steam Boilers and  
Filters**

Write for Prices and Particulars



## The John McDougall

GALEDONIAN IRON WORKS CO., LIMITED

MONTREAL, P.O.



MUNICIPAL ENGINEERS, CONTRACTORS AND MATERIALS

**WILLIS CHIPMAN**

Hon. Grad. McGill University.  
M. Can. Soc. C. E. M. Am. Soc. C. E.  
Mem. Am. W. W. Ass'n.  
**WATERWORKS, SEWERAGE WORKS, GAS  
WORKS, ELECTRIC LIGHT AND  
POWER PLANTS**  
Reports, Surveys, Construction, Valuations  
**103 BAY STREET - TORONTO**

**R. E. SPEAKMAN, C.E.**

A. M. Inst. C. E., 1875.  
**CONSULTING ENGINEER**

Waterworks, Sewerage and Sewage Disposal.  
Municipal Improvements.  
Granolithic Pavements.  
Electric Light Plants.  
Drainage and Irrigation of Land.  
Coal Handling Plant and Machinery.  
Plans, Specifications and Estimates.  
Construction and Valuations.

Canada Life Building - TORONTO

**WM. H. BREITHAUP, C.E.**

M. AM. SOC. C. E., M. CAN. SOC. C. E.  
**CONSULTING STRUCTURAL ENGINEER**

Foundations, Bridges, Buildings.  
BERLIN, ONT.

**JAMES C. KENNEDY,**  
MEM. CAN. SOC. C. E.

**Civil and Hydraulic Engineer**  
Examinations, Reports, Plans, Estimates,  
Supervision of Construction of Water  
Powers, Waterworks, Sewerage, etc.  
P. O. Box 131, HAWKESBURY, ONT., and  
877 Dorchester Street, MONTREAL, QUE.

**ROSS & HOLGATE**

**Consulting and  
Supervising Engineers**

Water Powers, Electric Light and Power  
Plants, Structural Work, Reports,  
Estimates, Arbitrations.  
80, ST. FRANCOIS XAVIER ST. - MONTREAL

**E. VON DER OSTEN & CO.,**

**Consulting Engineers**  
Industrial Plants, Waterworks,  
Lighting and Power Plants  
Sewerage and Sewage Disposal  
Garbage Reduction Plants  
Municipal Improvements  
73 Queen Street West,  
507 Manning Chambers, TORONTO, ONT.

Cable: Ackcoll

**J. J. COLLINS**

**B.A.S., C.E., M.E., E.E.**  
Ottawa, Ont., Canada

**RAILS** for Contractors, Switches, Gir-  
dars, &c.  
New and Second Hand  
**LOCOMOTIVES AND CARS**

**John J. Gartshore**  
85 Front St. West,  
(Opposite Queen's Hotel.) TORONTO

**FIREMEN'S LADDERS**

—AND—  
**LADDER TRUCKS**

We make the lightest, quickest,  
strongest and cheapest. Every Town  
and Village needs them and can afford  
them. They will save 50 times their  
price in insurance premiums. Write  
for circulars and quotations.

**THE WAGGONER LADDER CO., Limited**  
LONDON - ONT.

**John H. Jackson**

**CIVIL ENGINEER**  
WATER POWER, ELECTRIC RAIL-  
WAYS, STRUCTURAL STEEL.  
**Niagara Falls, Canada**  
Associated with Charles H. Mitchell,  
C. E., Hydraulic Engineer.

**CHARLES BRANDEIS**

A. M. Can. Soc. C. E., A. M. Amer. Inst. E. E.  
Mem. Amer. Electro-Chemical Soc., Etc.  
**CONSULTING ENGINEER**  
Estimates, Plans and Supervision of Hydraulic  
and Steam-Electric Light, Power and Railroad  
Plants, Specifications, Reports, Switchboard  
Designs, Complete Factory Installations, Elec-  
tric Equipment of Mines and Electro-Chemical  
Plants.  
Long Distance Telephone Main 32-6.  
Cable Address: Brandeis-Montreal.  
W. U. Code, Univ. Edition.  
Liverpool & London MONTREAL  
& Globe Building.

**"IMPERIAL BRAND" PORTLAND CEMENT**

You will surely admit that the best is none too good, and if you are  
requiring Cement give "IMPERIAL BRAND" a trial. We guarantee  
our product and can ship a quantity at once. Write for prices, etc., to  
**The Imperial Cement Company, Limited**  
OWEN SOUND, ONT.

**THE CANADIAN SEWER PIPE CO.**



MANUFACTURERS OF  
**FOR**  
**Sewers, Culverts and Water Pipes**  
*Inverts for Brick Sewers*  
WRITE FOR DISCOUNTS  
**ST. JOHNS, P.Q. HAMILTON, ONT. TORONTO, ONT.**

**The Greatest Concrete Mixer Yet Made**

WRITE FOR OUR NEW CATALOGUE F  
This is only one of 30  
or more styles of ma-  
chines that we make  
for different kinds of  
concrete work. 10 pa-  
tents allowed, others  
pending  
**NUMBER OF PATENTS**  
35,664  
672,934  
675,035  
675,036  
675,037  
698,182  
698,910  
699,667  
699,668  
701,312



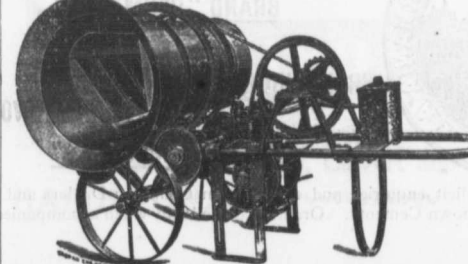
Also  
Mortar and  
Asphalt Mixers

**DRAKE STANDARD MACHINE WORKS**  
Factory, 79-11-13 Garden Street, Chicago.  
Office and Salesroom, 208-302 W. Jackson Boul.  
Chicago, Ill., U. S. A.  
Eastern Agent, Walter S. King, 27 St. John's Place, Brooklyn, N. Y.

Please mention THE CONTRACT RECORD when corresponding with advertisers.

**THE McKELVEY CONCRETE MIXERS**

MANUFACTURED BY **W. A. McKELVEY,** McKinnon Building,  
TORONTO.



These machines  
are made to mix  
either continu-  
ously or in  
batches, and can  
be operated  
either by Hand  
Steam or Gas-  
oline Power.

## CONTRACTS AWARDED.

VANCOUVER, B. C.—School building in Fairview West: James Layfield, successful tenderer, \$6,100.

ST. THOMAS, ONT. — \$17,075.87 city debentures: W. C. Brent, Toronto, purchaser, \$16,564 and accrued interest.

LUNENBURG, N. S.—Construction of sewerage system: Snow & Barbour, Tremont Building, Boston, successful tenderers.

WOODSTOCK, ONT.—Administration building at asylum for epileptics: William Griffin, this city, contractor, \$16,000.

HOPEWELL HILL, N. B. — New court house: H. Copp & Co., Sackville, contractor, \$4,495. W. E. Reid, of Riverside, architect.

STRATFORD, ONT.—W. J. Ireland, architect, has let contracts for alterations to residence on Douro street for Home Memorial Church.

OTTAWA EAST, ONT. — Waterworks system for Ottawa East Water

**Speight & Van Nostrand**  
LAND SURVEYORS, ETC.

Room 405 Temple Building, TORONTO, CAN.  
Field Notes of the late F. F. Passmore.

Co: Murphy & Lowrey, Ottawa, successful tenderers, price about \$25,000.

PORTAGE LA PRAIRIE, MAN.—I. O. O. F. Hall: Masonry, C. Jeffries; carpentry, D. Winton; roofing and tin-smithing, O. W. Hamber; cost \$9,000.

STOUFFVILLE, ONT.—Granolithic walks: Clement, Seal & Co., Marmora, successful tenderers, 11½ cents per square foot for walks, 13¼ cents for crossings.

WINNIPEG, MAN. — Three-storey block for P. A. Crump: Manitoba Construction Co., contractors.—Abattoir for Gallagher, Holman, LaFrance Co; Masonry, Davidson Bros; carpentry, James Neil; tin-smithing and galvanized iron, J. W. Wright; painting and glazing, F. J. Auley; electric wiring, Hudson Electric Co. S. Hooper is architect.

MONTREAL, QUE.—The Montreal Terra Cotta Lumber Co. have contracted to supply porous terra cotta fireproofing a number of important buildings in course of erection, including the Metropolitan Bank, McGill University Y.M. C.A. building, new Coristine building, City & District Savings Bank, extension to Court House, Bank of Montreal at Hochelaga, and new court house at Sherbrooke.—McGill Y. M. C. A. building: Charles Thackery & Co., Montreal and Ottawa, contractors.

**JOHN GALT, C.E. & M.E.**

MEM. CAN. SOC. C.E. AND C.E.A., ETC.  
**CONSULTING ENGINEER and EXPERT**  
National Trust Building  
20 King Street East Toronto  
Specialties—Water Supply and Sewerage.

**JOSSON CEMENT** .. Manufactured at  
**NIEL ON RUPELL**

Is the Highest Grade Artificial Portland Cement and the Best for High Class Work. Has been used largely for Government and Municipal Works.

TO BE HAD FROM ALL CANADIAN DEALERS

**C. I. de Sola, Manager in Canada** .. 180 St. James Street, MONTREAL

THE  
**Mathew's**  
Fire  
Hydrant



Is the recognized Standard Hydrant, and is the easiest Hydrant to keep in order.

Our Hydrants are thoroughly tested before shipment, and are of substantial proportions and weight.

Have your Engineer specify "The Mathew's" and get our tender.

**THE KERR ENGINE CO., LIMITED**  
Walkerville - Ont.

**"Lehigh"**  
Portland Cement



Capacity 11,000 Barrels every Day in the Year.

For Sidewalks and all other work requiring the highest quality Portland Cement Used by the U.S. Government and the largest contractors and users of Portland Cements in the United States.

Absolutely the most popular Cement in Canada on account of its merits.

For Prices, etc., address  
**THORN CEMENT CO. - Buffalo, N. Y.**

**Portland Cement..**

ALL GRADES.

Write or Telegraph to  
**BELLHOUSE, DILLON & CO.**  
201-203 Coristine Building, St. Nicholas Street, Montreal



for prices—Large stock constantly on hand.

Largest Makers in the World.

**SIEVERS & RAVENBORG, HAMBURG, GERMANY**



Sole Export Agents of the Famous  
**PORTLAND CEMENT WORKS, GERMANIA**

Largest Cement Works in Europe

**BRAND "GERMANIA"**

Also of the  
**BREITENBURGER PORTLAND CEMENT WORKS**

**BRAND "HERCULES"**



We solicit enquiries and orders from Canadian Dealers and Contractors on these well known Cements. Orders accepted only when accompanied by letters of credit.

# CANADA FOUNDRY COMPANY, LIMITED

Head Office and Works: TORONTO, ONT.



## DRINKING FOUNTAINS

For Man or Beast

INEXPENSIVE AND DURABLE

District Offices: MONTREAL HALIFAX OTTAWA WINNIPEG VANCOUVER VICTORIA ROSSLAND

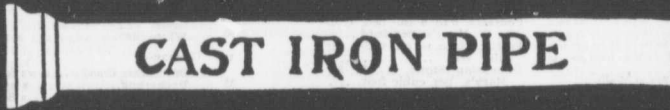
THOS. J. DRUMMOND, President

JAMES T. McCALL, Secretary-Treasurer

C. ED. GUEWILL, Vice-President

# Montreal Pipe Foundry Co., Limited

Special Castings  
Flange Pipe  
Branches  
Hydrants  
Valves



### CAST IRON PIPE

Valve Boxes  
and  
general  
Water  
Works  
Supplies

Works at: { LACHINE, QUE.  
THREE RIVERS, QUE.  
LONDONDERRY, N. S.

Combined daily capacity:  
175 Tons Pipes and Castings.

HEAD OFFICE CANADA LIFE BUILDING, MONTREAL

ALEX. GARTSHORE, President. J. G. ALLAN, Secretary and Treasurer. JAS. THOMSON, Vice-President and General Man.

# THE GARTSHORE-THOMSON PIPE & FOUNDRY CO. LIMITED.

Manufacturers of:::



### CAST IRON PIPE

Flexible and Flange Pipe,  
Special Castings and all kinds of  
Waterworks Supplies

3 inches to 60 inches diameter.

For Water, Gas, Culvert and Sewer

~~~~~ HAMILTON, ONT ~~~~~



**THE GOOD ROADS MACHINERY COMPANY, LIMITED**

144 York St., HAMILTON, CANADA

**THE REVERSIBLE STEEL  
'Champion'**  
Is the KING OF GRADERS.

**SIMPLE, STRONG AND DURABLE**

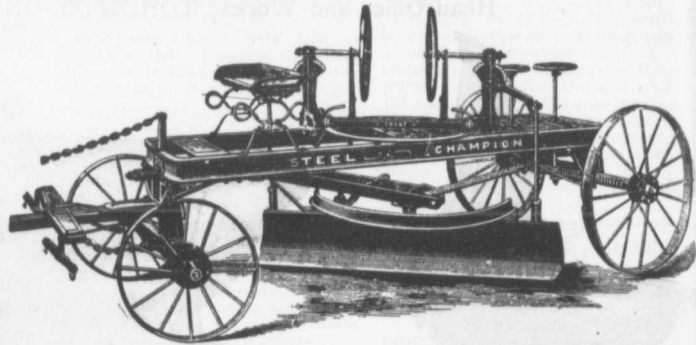
**—READ—**

One Record of a Thousand:  
Magog, Que., Aug. 21, 1903.  
Good Roads Machinery Co.,  
Hamilton, Ont.

GENTLEMEN—Our Steel CHAMPION  
is giving very good satisfaction; requires  
very little repairs though often used with  
six heavy horses on our rough and  
stoney roads.

L. A. AUDET, Secty.-Treas

AGENCIES—The Waterous Engine  
Works Co., Vancouver, B.C., and Winni-  
peg, Man.; T. A. Morrison, Montreal, 204  
St. James St.; J. Clark & Son, Frederic-  
ton, N. B.; G. A. Lounsbury Co., New-  
castle, N. B.; Elgh & France, Trois, P. S.



**Prices of Building Materials.  
PRESSED BRICK, Per M.**

| MILTON PRESSED BRICK AND SEWER PIPE CO. |                   |
|-----------------------------------------|-------------------|
|                                         | F. O. B. Montreal |
| Red No. 1                               | \$18 00           |
| " 2                                     | 16 00             |
| " 3                                     | 14 00             |
| Buff No. 1                              | 20 00             |
| " 2                                     | 18 50             |
| Brown                                   | 25 50             |
| Roman Red                               | 30 50             |
| " Buff                                  | 33 50             |
| " Brown                                 | 40 50             |
| Hard Building                           | 12 00             |
| Sewers                                  | 12 00             |
| Backing                                 | 11 50             |

Don Valley PRESSED BRICK WORKS.

|                                                     |       |
|-----------------------------------------------------|-------|
| Nos. 1, 2 and 3, Red Pressed Bricks                 | 18 00 |
| No. 1 and 2, Buff Pressed Brick                     | 16 00 |
| No. 1 Brown Pressed Brick                           | 14 00 |
| Pompeian Red, Buff and Brown Pressed Bricks         | 15 00 |
| Ornamental Bricks of all kinds for Mantel purposes  | 13 00 |
| Porous Terra Cotta Fireproofing of all Descriptions | 12 00 |
| Vitrified Street-Paving Bricks                      | 10 50 |
| Semi-Vitrified Foundation Bricks                    | 9 50  |
| Common Stock Red and Grey Bricks                    | 8 50  |
| Sewer Bricks                                        | 7 50  |
| Stone for Macadamized Roadways                      | 6 00  |

TORONTO PRESSED BRICK AND TERRA COTTA WORKS

| Milton, Ont. Montreal.                                                  |          |
|-------------------------------------------------------------------------|----------|
|                                                                         | F. O. B. |
| Red No. 1                                                               | 12 50    |
| " 2                                                                     | 10 50    |
| " 3                                                                     | 8 50     |
| Buff No. 1                                                              | 15 00    |
| " 2                                                                     | 13 00    |
| Brown                                                                   | 20 00    |
| Roman Red                                                               | 20 00    |
| " Buff                                                                  | 30 00    |
| " Brown                                                                 | 35 00    |
| Hard Building                                                           | 6 50     |
| " Sewers                                                                | 6 50     |
| " Backing                                                               | 6 00     |
| Moulded and Ornamental from \$2.00 to \$5.00 per 100.                   |          |
| Terra Cotta String Courses and Finials, from 50c. to \$2.00 per ft. run |          |
| Roofing Tiles, \$20.00 per 1,000, \$25.00 Montreal.                     |          |

BEAMSVILLE BRICK AND TERRA COTTA CO.

| Beamsville, Montreal.                                |          |
|------------------------------------------------------|----------|
|                                                      | F. O. B. |
| Red Peerless Facing                                  | \$15 50  |
| " No. 1                                              | 13 00    |
| " No. 2                                              | 11 00    |
| " No. 3                                              | 9 50     |
| Brown Peerless Facing                                | 20 00    |
| " No. 1                                              | 18 00    |
| Buff Peerless                                        | 20 00    |
| " No. 1                                              | 18 00    |
| " No. 2                                              | 15 00    |
| Moulded and Ornamental Brick from \$3 to \$10 per C. |          |
| Roman Red (Size 12 x 4 1/4 in.), 25 c                | 33 50    |
| " Buff                                               | 33 50    |
| " Brown                                              | 34 00    |
| Vitrified Paving Brick No. 1                         | 18 00    |
| " No. 2                                              | 15 00    |
| Sewer                                                | 12 00    |
| Roofing Tile                                         | 22 00    |

**FIRE BRICK**

| TORONTO POTTERY CO. |                   |
|---------------------|-------------------|
|                     | F. O. B. Toronto  |
| Boyd                | 21 00 M. 26 00 M. |
| W. W. Co.           | 24 50 M. 28 50 M. |
| Savage Crown        | 28 50 M. 32 00 M. |

| STONE.                                                                                        |                   |
|-----------------------------------------------------------------------------------------------|-------------------|
|                                                                                               | Toronto. Montreal |
| Common Rubble, per ton, delivered at building                                                 | 13 50 11 00       |
| Large flat Rubble, per ton, delivered                                                         | 14 00 18 00       |
| Foundation Blocks, per c. ft. Granite (Stanstead) Ashlar, 6 in. to 12 in. rise 9 in., per ft. | 41 50             |
| Amherst Red Sandstone, N. S., per cub. ft.                                                    | 85 70             |
| Sackville, N. B. brown or red stone f. o. b. Quarries                                         | 45 45             |
| Maillon                                                                                       | 30 60             |

**W. & F. P. CURRIE & CO.**

345 St. James St., Montreal

Importers of

SEWER PIPES,  
CULVERT PIPES, ETC.  
VENT LININGS,  
FLUE COVERS,  
FIRE BRICKS,  
FIRE CLAY,  
WHITING.



PORTLAND CEMENTS,  
HIGH GRADE ENGLISH  
" " " GERMAN  
" " " BELGIAN  
PLASTER OF PARIS  
BORAX,  
CHINA CLAY.

| Toronto.                                                                                                                   | Montreal. | Portland Cement                                              | Toronto. | Montreal |
|----------------------------------------------------------------------------------------------------------------------------|-----------|--------------------------------------------------------------|----------|----------|
| Stanstead granite paving blocks 12 in. x 12 in. x 6 in. 2 1/2 lb. per M.                                                   | 50 00     | English—Br. ok's Shoobridge Am hor                           | 2 35     | 2 40     |
| Granite curbing stone, 6x 12 in. per lineal foot                                                                           | 85        | Lucasior Brand                                               | 2 00     | 2 10     |
| Buctouche Olive Freestone Olive Sandstone (Indian-town, N. B.)                                                             | 80        | Belgian—                                                     |          |          |
| Brown Sandstone (Sackville, N. B.)                                                                                         | 80        | "Castle" Brand                                               | 2 10     | 2 15     |
| Moat red sandstone, per cu. ft.                                                                                            | 60        | "Tosson" Brand                                               | 2 50     | 2 30     |
| Black Pasture buff stone per cu. ft.                                                                                       | 50        | "North's Condor                                              | 1 90     | 2 00     |
| Nova Scotia blue grey, per cu. ft. Courses, 6 to 8 in. bed f. o. b. St. Mary's, per cord                                   | 7 00      | Cathedral                                                    | 2 35     | 2 50     |
| Footing, 6 to 10 in. wide, per cubic foot                                                                                  | 15        | "White Cross"                                                | 1 75     | 1 85     |
| St. Mary's, per cubic foot                                                                                                 | 35        | Atlas                                                        | 2 00     | 2 10     |
| Granite (Laurentian Pink) Ashlar, 6 to 2 in. rise 9 in., per c. ft.                                                        | 25        | Hammer                                                       | 1 80     | 1 90     |
| Do., for polishing purposes, up to 2 tons weight, per cubic foot                                                           | 40        | Red Cross Brand                                              | 1 95     | 2 05     |
| Dimension stock granite for building purposes, per cu. ft. Do., for polishing purposes, up to 2 tons weight, per cubic ft. | 60 00     | Waterloo                                                     | 1 50     | 1 55     |
| Paving sets, per thousand block                                                                                            | 60 00     | Raevel's 396 lb. bbl.                                        | 2 50     | 2 50     |
|                                                                                                                            |           | L. r. le S.                                                  | 2 25     | 2 55     |
|                                                                                                                            |           | White Star                                                   | 1 90     | 2 50     |
|                                                                                                                            |           | German—                                                      |          |          |
|                                                                                                                            |           | Offenbacher Brand                                            | 2 80     | 2 90     |
|                                                                                                                            |           | Dyckerhoff                                                   | 2 05     | 2 15     |
|                                                                                                                            |           | Karlstadt                                                    | 2 80     | 2 90     |
|                                                                                                                            |           | Heenmoor                                                     | 2 30     | 2 40     |
|                                                                                                                            |           | Cannon                                                       | 1 65     | 1 99     |
|                                                                                                                            |           | Heideberg                                                    | 2 50     | 2 40     |
|                                                                                                                            |           | Hercules                                                     | 2 10     | 2 20     |
|                                                                                                                            |           | Canadian—                                                    |          |          |
|                                                                                                                            |           | Rathbun's Star                                               | 1 90     | 2 25     |
|                                                                                                                            |           | Snign                                                        | 1 70     | 2 05     |
|                                                                                                                            |           | Cladell                                                      | 2 00     | 2 00     |
|                                                                                                                            |           | Trowel                                                       | 1 75     | 1 80     |
|                                                                                                                            |           | Sanson Brand                                                 | 2 00     | 2 05     |
|                                                                                                                            |           | Magnet                                                       | 1 60     | 1 80     |
|                                                                                                                            |           | Monarch                                                      | 1 90     | 2 00     |
|                                                                                                                            |           | Hercules                                                     | 2 00     | 2 00     |
|                                                                                                                            |           | Lion Brand                                                   | 1 75     | 1 75     |
|                                                                                                                            |           | Imperial                                                     | 2 00     | 2 00     |
|                                                                                                                            |           | Crescent 375 lbs. gross                                      | 2 30     | 2 40     |
|                                                                                                                            |           | Diamond 250 "                                                | 2 20     | 2 30     |
|                                                                                                                            |           | American—                                                    |          |          |
|                                                                                                                            |           | "Alba Brand                                                  | 1 75     | 1 80     |
|                                                                                                                            |           | Allen's                                                      | 2 00     | 2 00     |
|                                                                                                                            |           | Lenigh, in bbls., 375 lbs.                                   | 2 50     | 2 50     |
|                                                                                                                            |           | " cotton sacks, 250 net                                      | 2 10     | 2 25     |
|                                                                                                                            |           | " vapor bags                                                 | 2 10     | 2 25     |
|                                                                                                                            |           | "Iron Clad" in bags 350 lbs.                                 | 1 90     | 1 95     |
|                                                                                                                            |           | "Invicta" "                                                  | 1 75     | 1 80     |
|                                                                                                                            |           | "Adirondack" "                                               | 1 60     | 1 70     |
|                                                                                                                            |           | Keene's Superfine "Whites" 10 00 12 00                       | 8 50     | 9 00     |
|                                                                                                                            |           | Keene's Coarse "Whites" 6 50 7 00                            | 4 50     | 5 00     |
|                                                                                                                            |           | Fire Bricks, Newcastle, per M 27 00 33 00                    | 18 00    | 22 00    |
|                                                                                                                            |           | " Scotch                                                     | 25 00    | 33 00    |
|                                                                                                                            |           | " Canadian N. B.                                             | 19 00    | 23 00    |
|                                                                                                                            |           | Vulcanite (350 lbs. per bbl) by Toronto Pottery Co., Agents. | 1 90     | 1 90     |
|                                                                                                                            |           | "In paper bags                                               | 2 10     | 2 10     |
|                                                                                                                            |           | " wooden bbls.                                               | 2 10     | 2 10     |
|                                                                                                                            |           | " cotton bags                                                | 2 30     | 2 30     |

(CORRECTED UP TO MAY 17TH)