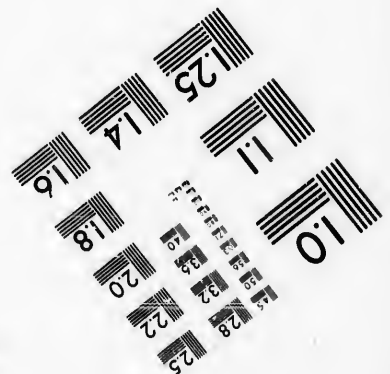
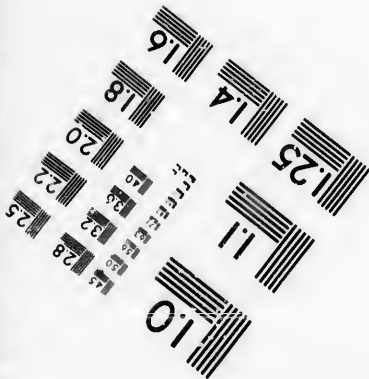
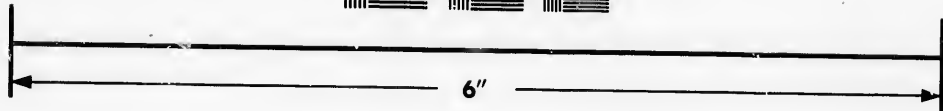
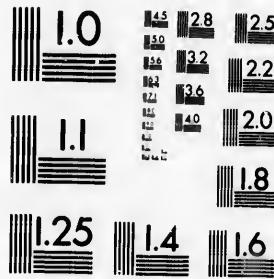


**IMAGE EVALUATION
TEST TARGET (MT-3)**



**Photographic
Sciences
Corporation**

23 WEST MAIN STREET
WFBSTER, N.Y. 14580
(716) 872-4503



**CIHM/ICMH
Microfiche
Series.**

**CIHM/ICMH
Collection de
microfiches.**



Canadian Institute for Historical Microreproductions / Institut canadien de microreproductions historiques



© 1986

Technical and Bibliographic Notes/Notes techniques et bibliographiques

The Institute has attempted to obtain the best original copy available for filming. Features of this copy which may be bibliographically unique, which may alter any of the images in the reproduction, or which may significantly change the usual method of filming, are checked below.

L'Institut a microfilmé le meilleur exemplaire qu'il lui a été possible de se procurer. Les détails de cet exemplaire qui sont peut-être uniques du point de vue bibliographique, qui peuvent modifier une image reproduite, ou qui peuvent exiger une modification dans la méthode normale de filmage sont indiqués ci-dessous.

- Coloured covers/
Couverture de couleur
- Covers damaged/
Couverture endommagée
- Covers restored and/or laminated/
Couverture restaurée et/ou pelliculée
- Cover title missing/
Le titre de couverture manque
- Coloured maps/
Cartes géographiques en couleur
- Coloured ink (i.e. other than blue or black)/
Encre de couleur (i.e. autre que bleue ou noire)
- Coloured plates and/or illustrations/
Planches et/ou illustrations en couleur
- Bound with other material/
Relié avec d'autres documents
- Tight binding may cause shadows or distortion
along interior margin/
La reliure serrée peut causer de l'ombre ou de la
distorsion le long de la marge intérieure
- Blank leaves added during restoration may
appear within the text. Whenever possible, these
have been omitted from filming/
Il se peut que certaines pages blanches ajoutées
lors d'une restauration apparaissent dans le texte,
mais, lorsque cela était possible, ces pages n'ont
pas été filmées.
- Additional comments:/ [Printed ephemera] [20] p.
Commentaires supplémentaires:

- Coloured pages/
Pages de couleur
- Pages damaged/
Pages endommagées
- Pages restored and/or laminated/
Pages restaurées et/ou pelliculées
- Pages discoloured, stained or foxed/
Pages décolorées, tachetées ou piquées
- Pages detached/
Pages détachées
- Showthrough/
Transparence
- Quality of print varies/
Qualité inégale de l'impression
- Includes supplementary material/
Comprend du matériel supplémentaire
- Only edition available/
Seule édition disponible
- Pages wholly or partially obscured by errata
slips, tissues, etc., have been refilmed to
ensure the best possible image/
Les pages totalement ou partiellement
obscurcies par un feuillet d'errata, une pelure,
etc., ont été filmées à nouveau de façon à
obtenir la meilleure image possible.

This item is filmed at the reduction ratio checked below/
Ce document est filmé au taux de réduction indiqué ci-dessous.

10X	12X	14X	16X	18X	20X	22X	24X	26X	28X	30X	32X
			/								

The copy filmed here has been reproduced thanks to the generosity of:

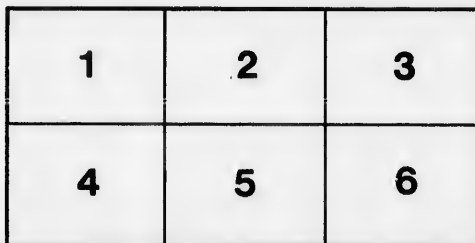
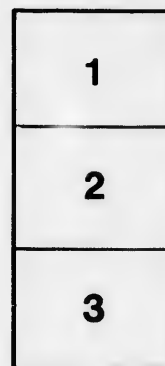
Douglas Library
Queen's University

The images appearing here are the best quality possible considering the condition and legibility of the original copy and in keeping with the filming contract specifications.

Original copies in printed paper covers are filmed beginning with the front cover and ending on the last page with a printed or illustrated impression, or the back cover when appropriate. All other original copies are filmed beginning on the first page with a printed or illustrated impression, and ending on the last page with a printed or illustrated impression.

The last recorded frame on each microfiche shall contain the symbol \rightarrow (meaning "CONTINUED"), or the symbol ∇ (meaning "END"), whichever applies.

Maps, plates, charts, etc., may be filmed at different reduction ratios. Those too large to be entirely included in one exposure are filmed beginning in the upper left hand corner, left to right and top to bottom, as many frames as required. The following diagrams illustrate the method:



L'exemplaire filmé fut reproduit grâce à la générosité de:

Douglas Library
Queen's University

Les images suivantes ont été reproduites avec le plus grand soin, compte tenu de la condition et de la netteté de l'exemplaire filmé, et en conformité avec les conditions du contrat de filmage.

Les exemplaires originaux dont la couverture en papier est imprimée sont filmés en commençant par le premier plat et en terminant soit par la dernière page qui comporte une empreinte d'impression ou d'illustration, soit par le second plat, selon le cas. Tous les autres exemplaires originaux sont filmés en commençant par la première page qui comporte une empreinte d'impression ou d'illustration et en terminant par la dernière page qui comporte une telle empreinte.

Un des symboles suivants apparaîtra sur la dernière image de chaque microfiche, selon le cas: le symbole \rightarrow signifie "A SUIVRE", le symbole ∇ signifie "FIN".

Les cartes, planches, tableaux, etc., peuvent être filmés à des taux de réduction différents. Lorsque le document est trop grand pour être reproduit en un seul cliché, il est filmé à partir de l'angle supérieur gauche, de gauche à droite, et de haut en bas, en prenant le nombre d'images nécessaire. Les diagrammes suivants illustrent la méthode.

JULY 20. 1882.

EASTERN Sea Coast



INTERNATIONAL
STEAMSHIP
COMPANY. 1882



F5012.1882.161E



ORGANIZED IN 1859.

COMPANY'S OFFICE,
40 EXCHANGE STREET, PORTLAND, ME.

T. C. HERSEY, President and Manager
H. J. LIBBY, Treasurer.
CAPT. J. B. COYLE, Engineer-in-charge

LOCAL OFFICES.

BOSTON, END OF COMMERCIAL WHARF

W. H. KILBY, Agent.

ST. JOHN, N.B., REED'S POINT WHARF.

H. W. CHISHOLM, Agent.

EASTPORT, ME., INTERNATIONAL WHARF

GEO. HAYES, Agent.

PORTLAND, ME., RAILROAD WHARF.

H. P. C. HERSEY, Freight Agent.

V. L. LEAVITT, TRAVELING AGENT.

THE
Favorite and Superior Sea-Going

OF THIS LINE:

“NEW YORK

1,100 TONS,

“CITY OF PORTLAND

1,100 TONS,

“FALMOUTH

1,200 TONS,

“STATE OF MAINE

(NEW), 1,500 TONS. (On and after)

Leave the END OF COMMERCIAL WHARF
A.M., and RAILROAD WHARF, Portland,
EASTPORT and ST. JOHN, N.B., with their
connections, every Monday, Tuesday, Wednesday,
Friday, through July, and August, as
notified.

The morning and noon trains of the Eastern
& Maine Railroads connect with Steamers

RETURNING

A Steamer will leave St. John at 8.00 A.M.
at 1.00 P.M., for Portland and Boston
Wednesday and Friday, and on and after
Sunday from St. John at 8.00 A.M., and Eastport
for Boston direct, not touching at Portland.

THE

Superior Sea-Going Steamers

OF THIS LINE:

NEW YORK,"

1,100 TONS,

OF PORTLAND,"

1,100 TONS,

ALMOUTH,"

1,200 TONS,

OF MAINE,"

1,200 TONS. (On and after Aug. 1.)

COMMERCIAL WHARF, Boston, at 8.30
AD WHARF, Portland, at 6.00 P.M., for
ST. JOHN, N.B., with the usual connec-
tion, Monday, Tuesday, Wednesday and
Thursday, July, and August, and until further

noon trains of the Eastern and Boston
connect with Steamers at Portland.

RETURNING, ————

leave St. John at 8.00 A.M., and Eastport
at 1.00 P.M., for Portland and Boston every Monday,
Wednesday, and on and after July 16th, every
Friday at 8.00 A.M., and Eastport at 1.00 P.M.,
not touching at Portland.

CONNECTIONS

AT EASTPORT

With Steamers to **CAMPOBELLO, GRAND MANAN** and Lubec. Daily Stages to Penabroke, Dennyville and Machias, and Steamer "Chas. Houghton" in regular connection to Robbinston and **CALAIS, Me.**, and **ST. ANDREWS** and St. Stephen, N. B., and from the latter places the New Brunswick & Canada R. R. runs Northward to **HOULTON** and other points in Aroostook County, Me.

FOR BAR HARBOR (MT. DESERT).

There will be steam communication between Campobello, Eastport and Bar Harbor twice a week, beginning early in July.

AT ST. JOHN

Passengers are forwarded by Steamers and Railway to Digby, **ANNAPOLIS**, Kentville, Wolfeville, **WINDSOR** and **HALIFAX, N.S.**, from Digby by Western Counties Railway to **YARMOUTH**, and from Annapolis by Kilcup's Stage Line to **LIVERPOOL, N.S.**

Steamers run daily up the River **ST. JOHN**, to **FREDERICTON**; and from thence connect with the New Brunswick R.R. to Woodstock, **FT. FAIRFIELD, GRAND FALLS**, and the other places on the Upper St. John River, and in Aroostook County.

The Trains of the Intercolonial Railway connect to Moncton, **SHEDIAC**, and Point du Chene, **MIRAMICHI** (New Castle), **BATHURST, DALHOUSIE** and **CAMPBELLTON, N. B.**, and to all stations to **RIVER DU LOUP** and **QUEBEC**, to Sackville, **AMHERST**, Londonderry, **TRURO**, New Glasgow, **PICTOU** and **HALIFAX, N.S.**; and from Point du Chene the Steamers "Princess of Wales" and "St. Lawrence" run to Summerside and connect with Railway to **CHARLOTTETOWN, P.E.I.** At **NEW GLASGOW** Railway connects to **ANTIGONISH**, Straits of Canso, with connections to **HAWKESBURY** and Sidney, C.B., and in summer there are also Steamers to places on the North Shore of New Brunswick, and to Quebec and Montreal.

Passengers for Halifax can leave St. John on evening after arrival, all rail, via Moncton and Truro, or next morning by same route, or by boat to Annapolis, and rail thence to Halifax. Passengers for Summerside and Charlottetown leave by morning train from St. John. Time from St. John to Halifax, twelve hours, St. John to Charlottetown, twelve hours.

RATES OF FARE

Subject to change.

	FROM BOSTON.		FROM PORTLAND.	
	Regular Fare.	Limited Ticket.	Regular Fare.	Limited Ticket.
AMHERST, N.S.	\$8.25	7.75
ANNAPOLIS, N.S.	6.50	\$5.00	\$6.00	\$5.00
ANTIGONISH, N.S.	10.75	10.25	10.25	9.75
AYLESFORD, N.S.	7.30	6.00	6.80	6.00
BATHURST, N.B.	9.50	9.00
BOSTON, MASS.	1.25
CALAIS, ME.	5.50	4.50	4.50	4.00
CAMPBELLTON.	10.50	10.00
CAMPOBELLO.	5.25	4.25	4.25	3.75
CARIBOU, ME.	9.50	9.00
CHARLOTTETOWN, P.E.I.	9.50	9.00
CHATHAM, N.B.	9.00	8.50
DALHOUSIE, N.B.	10.25	9.75
DIGBY, N.S.	6.00	5.00	5.50	5.00
EASTPORT, ME.	5.00	4.00	4.00	3.50
FORT FAIRFIELD, ME.	9.20	8.70
FREDERICTON, N.B.	5.50	5.00
GRAND FALLS, N.B.	9.50	9.00
GRAND MANAN	6.00	5.00	5.00	4.50
HALIFAX, via ANNAPOLIS	8.50	8.00	8.00	8.00
" via TRURO	9.50	9.00	9.00	8.50
HANTSPORT, N.S.	8.25	6.50	7.75	6.50
HOULTON, ME.	6.50	6.00
KENTVILLE, N.S.	7.75	6.00	7.25	6.00
KINGSTON, N.S.	7.05	5.75	6.55	5.75
LIVERPOOL, N.S.	10.50	9.00	10.00	9.00
LONDONDERRY, N.S.	9.25	9.00	8.75	8.50
MIDDLETON, N.S.	6.85	5.75	6.35	5.75
MONCTON, N.B.	7.00	6.50
NEWCASTLE, N.B.	8.75	8.50	8.25	8.00
NEW GLASGOW, N.S.	9.50	9.00	9.00	8.50
PICTOU, N.S.	9.50	9.00	9.00	8.50
PORTLAND, ME.	1.25
PORT HAWKESBURY, C.B.	11.70	11.20	11.20	10.70
SACKVILLE, N.B.	8.00	7.50
SHEDIAC, N.B.	7.00	6.50
SPRING HILL	8.50	8.00
ST. ANDREWS, N.B.	5.50	4.50	4.50	4.00
ST. JOHN, N.B.	5.50	4.50	4.50	4.00
SYDNEY C.B.	17.70	17.20	17.20	16.70
STRAITS CANSO, N.S.	11.90	11.40	11.40	10.90
SUMMERSIDE, P.E.I.	8.25	7.75
TRURO, N.S.	9.50	9.00	9.00	8.50
WENTWORTH	9.00	8.50
WINDSOR, N.S.	8.50	6.50	8.00	6.50
WOLFVILLE	8.00	6.25	7.50	6.25
WOODSTOCK, N.B.	6.50	6.00
YARMOUTH, N.S.	8.00	6.75	7.50	6.75

And many other Stations on Intercolonial and Windsor & Annapolis Railways.

ST. JOHN TO EASTPORT.....	\$1.50
" TO CALAIS AND ST. ANDREWS.....	1.75

Children between Five and Twelve Years, Half-Price.

Staterooms and Meals Extra.

For further information apply at the Company's and Agent's Offices, or of Clerks on board the Steamers, where

THROUGH TICKETS AND STATEROOMS

CAN BE SECURED.

Special attention is called list of attractive Excursions

Which excepting No. 2 are unlimited and a
over along the route.

No. 1. PORTLAND OCEAN EXCURSION

Leave Boston at 8.30 A.M., by International reach Portland about 4 P.M.; leave Portland 7 P.M., or by International Steamship Co. on arrival from St. John, not earlier than

No. 2. PORTLAND OCEAN and LANSDOWNE

Leave Boston at 8.30 A.M., by International and take 6.00 P.M. train of Eastern or from Portland, reaching Boston at 10.00 next day.

No. 3. EASTPORT EXCURSION

to Eastport, and return, by International Steamship Co.
From Portland, \$6.50.

No. 4. CALAIS EXCURSION

to Eastport by International Steamship Co. Calais by River Steamer; return same route.
From Portland, \$7.50.

No. 5. ST. JOHN EXCURSION

to Eastport and St. John, and return, by International Steamship Co.'s Steamers.
From Portland, \$7.50.

No. 6. FORT FAIRFIELD EXCURSION

(Including CARIBOU and GRAND MANAN)
to St. John by International Steamship Co. Fredericton by River Steamers; Fredericton New Brunswick Railroad; return same route.
From Portland, \$15.00.

No. 7. MIRAMICHI EXCURSION

to St. John by International Steamship Co. Miramichi by Intercolonial Railway; return same route.
From Portland, \$13.88.

No. 8. SUMMERSIDE EXCURSION

to St. John by International Steamship Co. Shediac by Intercolonial Railway; Shediac P.E.I. Steamers; return same route.
From Portland, \$13.50.

No. 9. CHARLOTTETOWN EXCURSION

to St. John by International Steamship Co. Shediac by Intercolonial Railway; Shediac P.E.I. Steamers; Summerside to Charlottetown by Intercolonial Railway; return same route.
From Portland, \$15.75.

No. 10. ANNAPOLIS EXCURSION

to St. John by International Steamship Co. Annapolis by Bay of Fundy Steamers; return same route.
From Portland, \$10.50.

Attention is called to the following
of attractive Excursion Trips:

g No. 2 are unlimited and allow the passengers to stop
over along the route.

PORTLAND OCEAN EXCURSION. \$2.00

8.30 A.M., by International Steamship Co.'s Steamer;
and about 4 P.M.; leave Portland by night steamer at
International Steamship Co.'s Steamer next morning
om St. John, not earlier than 5.00 A.M.

LAND OCEAN and LAND EXCURSION. \$3.25

8.30 A.M., by International Steamship Co.'s Steamer,
0 P.M. train of Eastern or Boston & Maine Railroads
nd, reaching Boston at 10.00 P.M., or take any train

No. 3. EASTPORT EXCURSION,

and return, by International Steamship Co.'s Steamers.
and, \$6.50. From Boston, \$7.50

No. 4. CALAIS EXCURSION,

International Steamship Co.'s Steamers; Eastport to
ver Steamer; return same route.
and, \$7.50. From Boston, \$8.50

No. 5. ST. JOHN EXCURSION,

St. John, and return, by International Steamship
rs.
and, \$7.50. From Boston, \$8.50

No. 6. FORT FAIRFIELD EXCURSION,

Including CARIBOU and GRAND FALLS,
International Steamship Co.'s Steamers; St. John to
by River Steamers; Fredericton to Fort Fairfield by
rick Railroad; return same route.
and, \$15.00. From Boston, \$16.00

No. 7. MIRAMICHI EXCURSION,

International Steamship Co.'s Steamers; St. John to
Intercolonial Railway; return same route.
and, \$13.88. From Boston, \$14.88

No. 8. SUMMERSIDE EXCURSION,

International Steamship Co.'s Steamers; St. John to
Intercolonial Railway; Shediac to Summerside by
ers; return same route.
and, \$13.50. From Boston, \$14.50

CHARLOTTETOWN EXCURSION.

International Steamship Co.'s Steamers; St. John to
Intercolonial Railway; Shediac to Summerside by
ers; Summerside to Charlottetown by P.E.I. Rail-
same route.
and, \$15.75. From Boston, \$16.75

No. 10. ANNAPOLIS EXCURSION.

International Steamship Co.'s Steamers; St. John to
Bay of Fundy Steamers; return same route.
and, \$10.50. From Boston, \$11.50

No. 10 A. KENTVILLE EXCURSION,

to St. John by International Steamship Co.'s Steamers; St. John to
Annapolis by Bay of Fundy Steamers; Annapolis to Kentville by
W. & A. Railway; return same route
From Portland, \$12.95. From Boston, \$13.95

No. 11. WINDSOR EXCURSION,

to St. John by International Steamship Co.'s Steamers; St. John to
Annapolis by Bay of Fundy Steamers; Annapolis to Windsor
by W. & A. Railway; return same route.
From Portland, \$13.55. From Boston, \$14.55

No. 12. HALIFAX W. & A. RAILWAY EXCURSION,

to St. John by International Steamship Co.'s Steamers; St. John to
Annapolis by Bay of Fundy Steamers; Annapolis to Halifax by
W. & A. Railway; return same route.
From Portland, \$15.00. From Boston, \$16.00

No. 13. HALIFAX INTERCOLONIAL R'Y EXCURSION,

to St. John by International Steamship Co.'s Steamers; St. John to
Halifax by Intercolonial Railway; return same route.
From Portland, \$15.00. From Boston, \$16.00

No. 14. HALIFAX ROUND TRIP EXCURSION.

to St. John by International Steamship Co.'s Steamers; St. John to
Annapolis by Bay of Fundy Steamers; Annapolis to Halifax by
W. & A. Railway; Halifax to St. John by Intercolonial Railway;
St. John to Boston by International Steamship Co.'s Steamers.
From Portland, \$17.00. From Boston, \$18.00

No. 15. HALIFAX EXCURSION.

Route No. 14 reversed.
From Portland, \$17.00. From Boston, \$18.00

No. 16. THREE PROVINCES EXCURSION,

to St. John by International Steamship Co.'s Steamers; St. John to
Annapolis by Bay of Fundy Steamers; Annapolis to Halifax by
W. & A. Railway; Halifax to Pictou by Intercolonial Railway;
Pictou to Charlottetown by P. E. I. Steamers; Charlottetown to
Summerside by P. E. I. Railway; Summerside to Shediac by
P. E. I. Steamers; Shediac to St. John by Intercolonial Railway;
St. John to Boston by International Steamship Co.'s Steamers.
From Portland, \$21.00. From Boston, \$22.00

No. 17. THREE PROVINCES EXCURSION.

Route No. 16 reversed.
From Portland, \$21.00. From Boston, \$22.00

No. 18 A. TRURO EXCURSION.

to St. John by International Steamship Co.'s Steamers; St. John to
Truro by Intercolonial Railway; return same route.
From Portland, \$15.00. From Boston, \$16.00

No. 19. PICTOU EXCURSION.

to St. John by International Steamship Co.'s Steamers; St. John to
Pictou by Intercolonial Railway; return same route.
From Portland, \$15.00. From Boston, \$16.00

No. 20. CAMPOBELLO EXCURSION,

to Eastport by International Steamship Co.'s Steamers; Eastport to Campobello by Steamer; return same route.

From Portland, \$7.00.

From Boston, \$8.00

No. 21. BAR HARBOR EXCURSION,

to Portland by International Steamship Co.'s Steamers; Portland to Bar Harbor by Mt. Desert Steamer; Bar Harbor to Eastport and Campobello by Steamer Admiral; Eastport to Boston by International Steamship Co.'s Steamers.

From Boston, \$10.75.

No. 22. ST. JOHN EXCURSION, (Rail.)

to St. John by International Steamship Co.'s Steamers; return via all rail.

From Portland, \$10.50.

From Boston, \$12.50

No. 23. YARMOUTH EXCURSION,

to St. John by International Steamship Co.'s Steamers; St. John to Digby by N. S. S.S. Co.'s Steamers; Digby to Yarmouth by Western Counties Railway; Yarmouth to Boston by N. S. S.S. Co.'s Steamers.

From Portland or Boston, \$11.75.

No. 24. HALIFAX AND YARMOUTH EXCURSION,

to St. John via International Steamship Co.'s Steamers; St. John to Annapolis by N. S. S.S. Co.'s Steamers; Annapolis to Halifax and return to Annapolis via Windsor and Annapolis Railway; Annapolis to Digby by N. S. S.S. Co.; Digby to Yarmouth by Western Counties Railway; Yarmouth to Boston by N. S. S.S. Co.'s Steamers.

From Portland or Boston, \$17.75.

No. 25. LOWER PROVINCES EXCURSION, (N.S.S. Co.)

to St. John by International Steamship Co.'s Steamers; St. John to Point du Chene by Intercolonial Railway; Point du Chene to Summerside by P. E. I. Steam Nav. Co.'s Steamers; Summerside to Charlottetown by P. E. I. Railway; Charlottetown to Pictou by P. E. I. Steamers; Pictou to Halifax by Intercolonial Railway; Halifax to Annapolis by Windsor & Annapolis Railway; Annapolis to Digby by N. S. S.S. Co.'s Steamers; Digby to Yarmouth by Western Counties Railway; Yarmouth to Boston by N. S. S.S. Co.'s Steamers.

From Portland or Boston, \$23.25.

No. 26. HALIFAX EXCURSION, (N.S.S. Co.)

to St. John by International Steamship Co.'s Steamers; St. John to Halifax by Intercolonial Railway; Halifax to Annapolis by Windsor & Annapolis Railway; Annapolis to Digby by N. S. S.S. Co.'s Steamers; Digby to Yarmouth by Western Counties Railway; Yarmouth to Boston by N. S. S.S. Co.

From Portland or Boston, \$19.15.

—◆◆— DISTANCES —◆◆—

	Miles
Boston to Portland.....	110
Portland to Eastport.....	190
Eastport to Campobello 2, Lubec 3, Pembroke 11, Dennysville 16, St. Andrews 15, Robbinston 17, Calais 30, Grand Manan 18, St. John 60, Bar Harbor 80.	
St. John to Fredericton 86, Digby 43, Annapolis 61, Kentville 120, Windsor 145, Halifax via Windsor 190, Shediac 106, Moncton 89, Miramichi 167, Bathurst 211, Dalhousie 265, Amherst 138, Truro 215, Pictou 267, Halifax, via Truro 276.	
Shediac to Summerside.....	35
Summerside to Charlottetown.....	49
Charlottetown to Pictou.....	53
Pictou to Halifax.....	113
Usual running time between Boston and Portland, eight hours; Portland and Eastport, fifteen hours; Eastport and St. John, four hours.	

—TICKETS.—

TICKETS sold at the principal Railroad and Steamboat Offices of connecting Lines at New York and intervening points between Boston and New York; also at Philadelphia, Baltimore, Washington, Albany, Buffalo, Cleveland, Pittsburg, Cincinnati, Chicago, and principal points South and West; also in the EAST at all stations on the Intercolonial Railway and connections in New Brunswick, Nova Scotia and Prince Edward Island; also on Windsor & Annapolis, and Western Counties Railways.

Passengers desiring to take the Steamers at Portland instead of Boston, can purchase tickets at the Agent's Office, end of Commercial Wharf, Boston, or at the Railroad Stations, at rates which, with a few exceptions are \$1.50 higher than by steamer direct from Boston; also, at Stations of Boston & Maine and Eastern Railroads between Boston and Portland.

Ocean Day Route to Portland.**+ SPECIAL ATTENTION IS CALLED +**

To this attractive DAY-ROUTE between Boston and Portland. During the season of Summer travel the Steamers leave Boston every MONDAY, TUESDAY, WEDNESDAY and FRIDAY, at 8.30 A.M., in July and August, and [until] further notice, reaching Portland at 4.30 P.M. affording opportunity of seeing the interesting scenery of the harbors of both cities, and the intervening coast, and giving a fine ocean trip.

DINNER IS SERVED ON BOARD.

Many travelers make it a part of their route to Mt. Desert and the White Mountains. The Mt. Desert Steamers leave the same wharf at Portland the evening after arrival, and passengers can take the late trains to Conway and other points in the White Mountain region, as well as to Old Orchard Beach and other stations on the railroads leading out of Portland.

Fare, Boston to Portland.....	\$1.25
“ “ “ Old Orchard Beach.....	1.50
“ “ “ North Conway.....	3.25
“ “ “ Glen Station.....	3.50
“ “ “ Crawford House.....	4.25
“ “ “ Fabyan's.....	4.50

Notice Portland Excursion Rates

30 29150



West Quoddy Head and Sail Rock, Lubec, Me., the extreme eastern point of land in the United States.

TO SUMMER TRAVELERS

The attractions of this eastern sea-coast route are numerous and varied and to those who wish to escape the heat and dust, and the enervating influence of midsummer, it affords ready access to places where comfortable nights, clear bracing air, and all the invigorating influences of a cooler climate prevail,

AND SPORTSMEN

Find in these regions unrivalled opportunities. The bay about Eastport and Campobello is famous for its deep-sea fishing; and the same is true of other harbors. The clear streams of these sections are well stocked with trout; the Schoodic Lakes, above Calais, are the homes of the land-locked salmon; there is excellent salmon fishing at Denysville, Me., near Eastport, and the salmon fisheries of the Miramichi, Nepisiquit and other rivers of Northern New Brunswick are unsurpassed. Along the Bay of Fundy and on the shores of Prince Edward Island and the Bay of Chaleur wild fowl abound and the moose and caribou are still found in the forests of ancient Acadia.

Persons liable to the inflictions of Hay Fever or Autumnal Catarrh can readily escape its pains and torments by going to Eastport, Campobello, Grand Manan, St. John, or other places on the shores of the Bay of Fundy, or Prince Edward Island, as has been proved by the experience of numerous sufferers who make that region their annual place of refuge, and the passage by steamer is free from the heat and dust of railway travel, so trying to sensitive nerves.

THE FRONTIER R

THE attractions which Eastport and the place the large islands on the other side of the summer resort are getting to be widely known.

EASTPORT

Has a hotel, the Passamaquoddy House, with a being among the best in the State, and the Island West Quoddy Head, in Lubec, which was formed the easternmost point of land in the United States juts up just outside is the very apex of the Republic up the St. Croix River, lives a portion of the Indians, and just above is the pleasant village on the British side of the river, lies the old town

ST. ANDRE

Occupying a most lovely situation, looking out sloping upward toward the high Chamcook Hill new and spacious hotel, is well patronized. A stands the busy Provincial town of St. Stephen American city of

CALAIS

The St. Croix River below Calais is very picturesque relic of the early French discovery, for on the embraced in the lower ward of the city, was on the coast, by De Monts, Champlain and the winter of 1604-5, sixteen years before the pilgr



PASSAMAQUODDY HOUSE, EASTPORT

FRONTIER RESORTS.

which Eastport and the places in its vicinity, especially those on the other side of the boundary line, offer for getting to be widely known.

EASTPORT

Passamaquoddy House, with a well-earned reputation as the best in the State, and the Island House is less expensive. Lubec, in Lubec, which was formerly a part of Eastport, is the largest town in the United States, and Sall Rock, which is the very apex of the Republic. At Pleasant Point, on the river, lives a portion of the Passamaquoddy tribe of Indians. Above is the pleasant village of Robinston. Opposite, on the other side of the river, lies the old town of Eastport.

T. ANDREWS

A lovely situation, looking out upon the broad bay, and toward the high Chancook Hills. The Argyll House, a hotel, is well patronized. At the head of navigation is the provincial town of St. Stephen, and the enterprising town of Calais.

CALAIS.

Below Calais is very picturesque; its name is a French discovery, for on Doucett's or Neutral Island, toward the city, was made the first settlement by the Monts, Champlain and their party, who spent here for sixteen years before the pilgrims landed at Plymouth.



PASSAMAQUODDY HOUSE, EASTPORT, ME.



TYN-Y-COED. CAMPOBELLO ISLAND

CAMPOBELLO

Is a large and picturesque island, opposite Eastport, a mile and a half distant, on the Dominion side of the line.

Its superior capabilities as a place of summer resort have at length been recognized, and in the hands of recent purchasers offers increasing attractions to visitors and summer residents. It is nine miles long, with a great variety of scenery; bold headlands and pebbly beaches on the ocean side, while within are winding coves, shady nooks and sloping fields looking out upon the sheltered bay, and across the border up long vistas among the Islands and headlands of Eastern Maine. A marked figure in the landscape is that of the "Old Friar," standing guard at the foot of the headland which bears his name. There are charming drives about the island; and from here, as well as from Eastport, there are opportunities for a great variety of excursions, fishing in the bay, making chowder upon the rocks, and sailing among the islands and up the neighboring rivers.

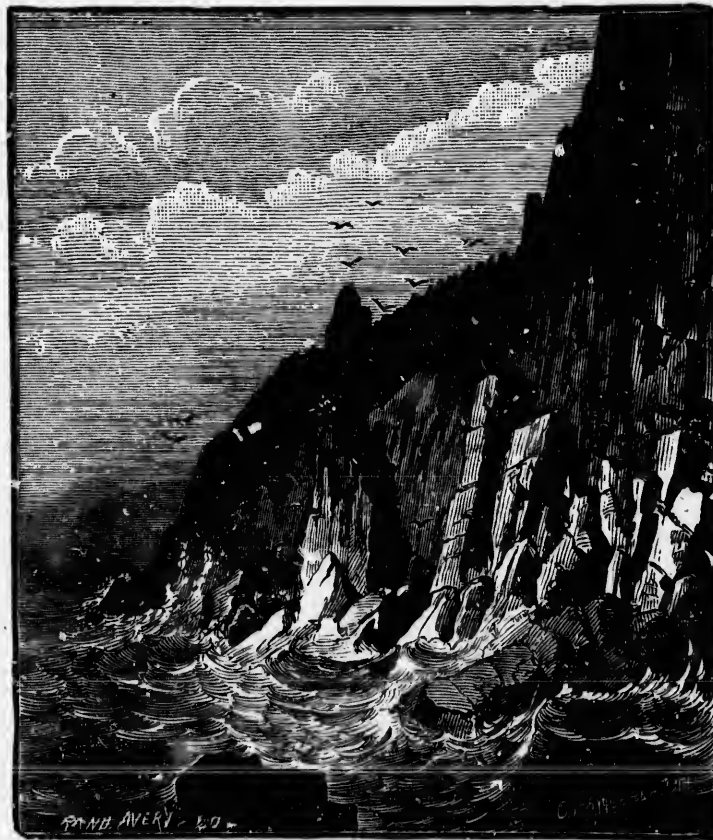
Two new and beautiful hotels, the "OWEN" and "TYN-Y-COED," will be open to summer visitors.

Prof. N. S. SHALER of Harvard College, than whom there is no better authority in such matters, says in his preliminary report,—"The Island is singularly well placed for the summer resident, in that it affords excellent opportunities for an out-door life. Passamaquoddy Bay, as before remarked, has several hundred miles of inland waters connected with it that are safely navigable in small boats. The shores of these waters are very attractive,—many excellent trout and salmon streams flow into them, and the waters of the Bay and its inlets afford the widest range of sea-fishing. It has been my good fortune to see in a careful way the Eastern Coast of North America from Georgia to Labrador. There are few persons who have had such opportunities for knowing the relative advantages of the several parts of this coast. Every one of my many visits to Passamaquoddy Bay has served to reaffirm my conviction that this region presents the best combination of desirable features to those who seek a place for a summer resort. The island of Campobello is not only the best place of all the islands in this bay, but the plan of administration that has been adopted will certainly make it the most attractive resort on the Atlantic Coast."

GRAND MANAN.

At the entrance of the Bay of Fundy is the large Island of Grand Manan. It belongs to the Dominion of Canada, and is nine miles distant from the extreme eastern coast of Maine. This western shore is about twenty miles long of massive perpendicular cliffs. On the eastern side are several villages lying upon pleasant coves and beaches with wharves and landings, and fringed with numerous smaller islands. For grand and rugged coast scenery the place is unsurpassed. The towering cliffs rise in sheer ascent three or four hundred feet from the surf-beaten base, at one point stratified with geometric lines of perfect masonry, and at others displaying the richest laves. The bold promontories take on strange giant-shapes. One of marked peculiarity is recognized as the Bishop, while to another the artists have given the appropriate name of Southern Cross, of which an illustration is given.

This picturesque region has long been a favorite resort for artists and naturalists, and with improved modes of access is visited by increasing numbers of tourists. Steamers connect with Eastport, making the passage across in about two hours. Two hotels have been opened near Northern Head, where travellers are comfortably cared for at moderate prices; and board can be had at private houses. The roads of the island are excellent; and good horses for drives are abundant at very low prices; the same may be said of boats and boatmen. There are good facilities for fishing and shooting, and those who find attraction in grand and beautiful scenery will be well repaid by a visit to this cliff-girt isle of the north.



SOUTHERN CROSS, GRAND MANAN.



ARGYLL HOUSE, ST. ANDREWS, N.B.

LIST OF SOME OF THE
PRINCIPAL HOTELS
 IN
 EASTERN MAINE AND NEW BRUNSWICK.

PASSAMAQUODDY HOUSE,	Eastport, Me.,	T. H. Bucknam, Prop'r.
ISLAND HOUSE,	" "	E. S. Kenney, "
ST. CROIX EXCHANGE,	Calais, "	W. H. Young, "
AMERICAN HOUSE,	" "	D. M. Gardner, "
QUEEN'S HOTEL,	St. Stephen, N. B.,	W. D. Simpson, "
COMMERCIAL HOTEL,	" "	P. Finley, "
ARGYLL HOTEL,	St. Andrews, "	W. H. Herbert, "
THE OWEN,	Campobello, "	T. A. Barker, Manager.
TYN-Y-COED,		
MARBLE RIDGE HOUSE,	Gr'd Manan, "	James A. Pettes, Prop'r.
SEA VIEW HOUSE,	" "	Edmund Daggett, "
HOTEL DUFFERIN,	St. John, "	F. A. Jones, "
ROYAL HOTEL,	" "	T. F. Raymond, "
WAVERLY HOUSE,	" "	John Guthrie, "
PARK HOTEL,	" "	Edwards & Phillips, "
INTERNATIONAL HOTEL,	" "	R. S. Hyke, "
NEW VICTORIA HOTEL,	" "	D. W. McCormack, "
CLIFTON HOUSE,	" "	A. N. Peters, "
GLOBE HOTEL,	" "	John McCoskry, "
ST. JOHN HOTEL,	" "	J. A. Burns, "
QUEEN HOTEL,	Fredericton, N. B.,	Edwards & Wheeler "
BARKER HOUSE,	" "	Robert Orr, "

Passengers from South & West

WILL PLEASE NOTE THE FOLLOWING:

Leave **CHICAGO** by Mich. Central & Lake Shore, and Mich. Southern R'ys at 5.15 P.M., arriving in Boston the second morning, and Portland at 5 P.M., connecting with I. S. S. Co.'s Steamers; or, leave Chicago by same lines, 9 A.M., arriving at Boston the second evening, taking the I. S. S. Co.'s Steamers next morning for the East.

Leave **CHICAGO** via Pittsburg, Ft. Wnyne & Chicago Railway, by 7 5.00 P.M. Train, arriving in Boston by All-Rail from New York, second morning.

Leave **CHICAGO** by Night Trains of Pittsburg, Ft. Wnyne & Chicago Railway, arriving at Boston by Sound lines from New York, the third morning.

Leave **CHICAGO** via Baltimore & Ohio R.R. Night Express, arriving at New York the second afternoon, and Boston by Rail or Sound lines the next morning.

Leave **CHICAGO** by Chicago & Grand Trunk Railway, by Morning Train, arriving at Portland the third noon, connecting with International Steamship Co.'s Steamer that evening for St. John.

REMEMBER: The Route via International Steamship Co. from Boston or Portland is 100 Miles shorter than by All-Rail to the Maritime Provinces.

Leave **WASHINGTON** by Morning Trains of Baltimore & Potomac, or Baltimore & Ohio R.R., arriving in New York same afternoon, taking the Sound lines or All-Rail lines to Boston.

Leave **BALTIMORE** by the Washington Through Line, arriving at Boston same time as given in Table from Washington.

Leave **PHILADELPHIA** by Afternoon Train, arriving in Boston next morning by Sound lines or All-Rail.

Leave **NEW YORK** by Sound lines or All-Rail at night, arriving next morning at Boston.

All the above-named Trains and Sound Line Steamers are due in Boston (unless otherwise noted) in time to connect with the International Steamship Co.'s Steamers for the East.

Passengers going through to Maritime Provinces should always see that the Coupon on their Ticket reads:

FROM BOSTON OR PORTLAND

BY

"INTERNATIONAL STEAMSHIP CO."

The Steamers of this Company leave Boston at 8.30 A.M., affording a delightful Day-Trip on the ocean between Boston and Portland.

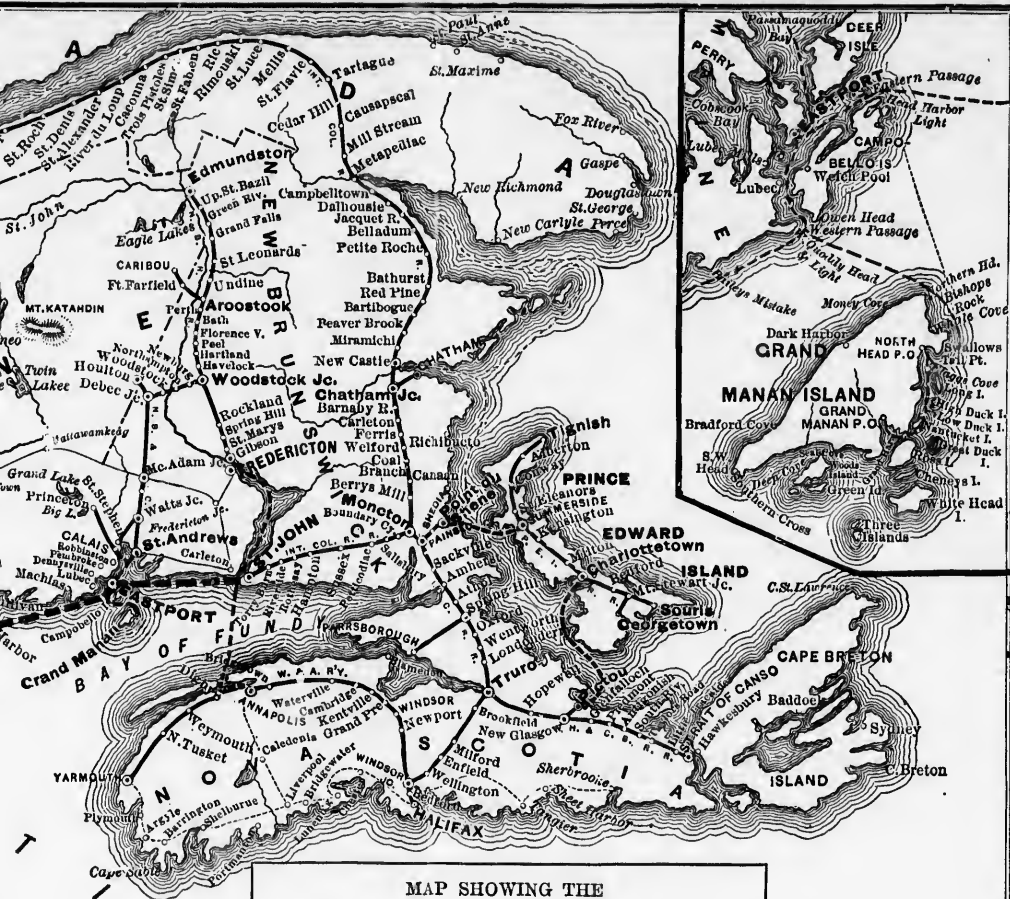
100 Miles Shorter and Several Dollars the Cheaper Route

TO ALL PARTS OF

MARITIME PROVINCES.



Rand, Avery & Co., Engr's, Boston.



MAP SHOWING THE
INTERNATIONAL STEAMSHIP CO.
ROUTE,
 AND ITS CONNECTIONS.

Avery & Co., Engr's, Boston.



HOTEL DUFFERIN, ST. JOHN, N.B.

Special attention is called to the
**Bar Harbor, Campobello, Eastport and
 Grand Manan Division**
 —OF—
INTERNATIONAL STEAMSHIP CO.
 —OF—
THE STEAMER ADMIRAL

Will leave Bar Harbor every Tuesday for Campobello, Eastport and Grand Manan, and every Friday for Campobello and Eastport, connecting with Steamer for St. Andrews and Calais.

RETURNING

Leave Eastport and Campobello every Monday, for Bar Harbor, and leave Grand Manan every Wednesday, for Eastport, Campobello and Bar Harbor, connecting at Eastport with Steamers for St. John, Portland and Boston, and with River Steamer for St. Andrews and Calais.





OLD-ESTABLISHED LINE OF STEAMERS

— BETWEEN —

BOSTON,

PORTLAND, EASTPORT,

— AND —

ST. JOHN, N.B.

WITH CONNECTIONS TO

CALAIS, ME., CAMPOBELLO, N.B.,

HALIFAX, N.S.

CHARLOTTETOWN, P.E.I.,

AND ALL PARTS OF THE

MARITIME PROVINCES

OF THE DOMINION OF CANADA.

JULY, 1882.

