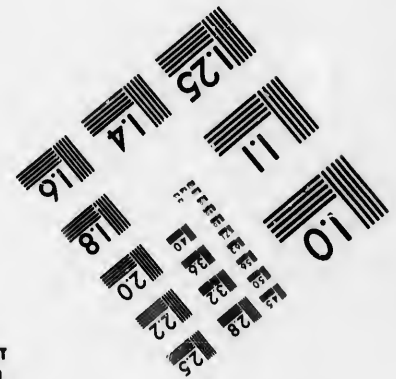
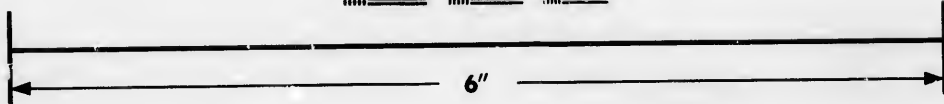
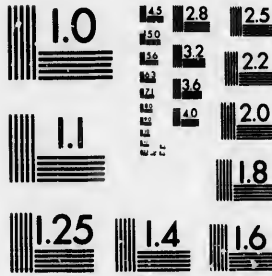


**IMAGE EVALUATION
TEST TARGET (MT-3)**



**Photographic
Sciences
Corporation**

23 WEST MAIN STREET
WEBSTER, N.Y. 14580
(716) 872-4503

25
**CIHM/ICMH
Microfiche
Series.**

**CIHM/ICMH
Collection de
microfiches.**



Canadian Institute for Historical Microreproductions / Institut canadien de microreproductions historiques

© 1986

Technical and Bibliographic Notes/Notes techniques et bibliographiques

The Institute has attempted to obtain the best original copy available for filming. Features of this copy which may be bibliographically unique, which may alter any of the images in the reproduction, or which may significantly change the usual method of filming, are checked below.

L'Institut a microfilmé le meilleur exemplaire qu'il lui a été possible de se procurer. Les détails de cet exemplaire qui sont peut-être uniques du point de vue bibliographique, qui peuvent modifier une image reproduite, ou qui peuvent exiger une modification dans la méthode normale de filmage sont indiqués ci-dessous.

- | | |
|--|--|
| <input type="checkbox"/> Coloured covers/
Couverture de couleur | <input type="checkbox"/> Coloured pages/
Pages de couleur |
| <input type="checkbox"/> Covers damaged/
Couverture endommagée | <input type="checkbox"/> Pages damaged/
Pages endommagées |
| <input type="checkbox"/> Covers restored and/or laminated/
Couverture restaurée et/ou pelliculée | <input type="checkbox"/> Pages restored and/or laminated/
Pages restaurées et/ou pelliculées |
| <input type="checkbox"/> Cover title missing/
Le titre de couverture manque | <input checked="" type="checkbox"/> Pages discoloured, stained or foxed/
Pages décolorées, tachetées ou piquées |
| <input type="checkbox"/> Coloured maps/
Cartes géographiques en couleur | <input type="checkbox"/> Pages detached/
Pages détachées |
| <input type="checkbox"/> Coloured ink (i.e. other than blue or black)/
Encre de couleur (i.e. autre que bleue ou noire) | <input checked="" type="checkbox"/> Showthrough/
Transparence |
| <input type="checkbox"/> Coloured plates and/or illustrations/
Planches et/ou illustrations en couleur | <input checked="" type="checkbox"/> Quality of print varies/
Qualité inégale de l'impression |
| <input type="checkbox"/> Bound with other material/
Relié avec d'autres documents | <input type="checkbox"/> Includes supplementary material/
Comprend du matériel supplémentaire |
| <input type="checkbox"/> Tight binding may cause shadows or distortion
along interior margin/
La reliure serrée peut causer de l'ombre ou de la
distorsion le long de la marge intérieure | <input type="checkbox"/> Only edition available/
Seule édition disponible |
| <input type="checkbox"/> Blank leaves added during restoration may
appear within the text. Whenever possible, these
have been omitted from filming/
Il se peut que certaines pages blanches ajoutées
lors d'une restauration apparaissent dans le texte,
mais, lorsque cela était possible, ces pages n'ont
pas été filmées. | <input type="checkbox"/> Pages wholly or partially obscured by errata
slips, tissues, etc., have been refilmed to
ensure the best possible image/
Les pages totalement ou partiellement
obscurcies par un feuillet d'errata, une pelure,
etc., ont été filmées à nouveau de façon à
obtenir la meilleure image possible. |
| <input checked="" type="checkbox"/> Additional comments:/ [Printed ephemera] 1 sheet (verso blank)
Commentaires supplémentaires: | |

This item is filmed at the reduction ratio checked below/
Ce document est filmé au taux de réduction indiqué ci-dessous.

10X	12X	14X	16X	18X	20X	22X	24X	26X	28X	30X	32X
					/						

The copy filmed here has been reproduced thanks to the generosity of:

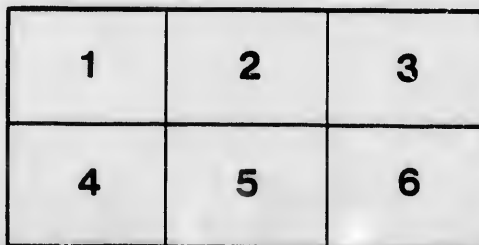
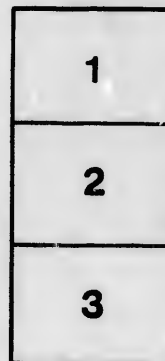
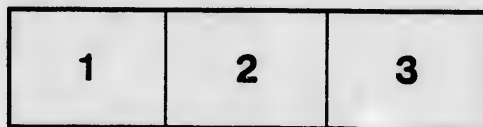
Seminary of Quebec
Library

The images appearing here are the best quality possible considering the condition and legibility of the original copy and in keeping with the filming contract specifications.

Original copies in printed paper covers are filmed beginning with the front cover and ending on the last page with a printed or illustrated impression, or the back cover when appropriate. All other original copies are filmed beginning on the first page with a printed or illustrated impression, and ending on the last page with a printed or illustrated impression.

The last recorded frame on each microfiche shall contain the symbol \rightarrow (meaning "CONTINUED"), or the symbol ∇ (meaning "END"), whichever applies.

Maps, plates, charts, etc., may be filmed at different reduction ratios. Those too large to be entirely included in one exposure are filmed beginning in the upper left hand corner, left to right and top to bottom, as many frames as required. The following diagrams illustrate the method:



L'exemplaire filmé fut reproduit grâce à la générosité de:

Séminaire de Québec
Bibliothèque

Les images suivantes ont été reproduites avec le plus grand soin, compte tenu de la condition et de la netteté de l'exemplaire filmé, et en conformité avec les conditions du contrat de filmage.

Les exemplaires originaux dont la couverture en papier est imprimée sont filmés en commençant par le premier plat et en terminant soit par la dernière page qui comporte une empreinte d'impression ou d'illustration, soit par le second plat, selon le cas. Tous les autres exemplaires originaux sont filmés en commençant par la première page qui comporte une empreinte d'impression ou d'illustration et en terminant par la dernière page qui comporte une telle empreinte.

Un des symboles suivants apparaîtra sur la dernière image de chaque microfiche, selon le cas: le symbole \rightarrow signifie "A SUIVRE", le symbole ∇ signifie "FIN".

Les cartes, planches, tableaux, etc., peuvent être filmés à des taux de réduction différents. Lorsque le document est trop grand pour être reproduit en un seul cliché, il est filmé à partir de l'angle supérieur gauche, de gauche à droite, et de haut en bas, en prenant le nombre d'images nécessaire. Les diagrammes suivants illustrent la méthode.

GRAND EXHIBITION OF ILLUMINATED DIORAMAS.

Mr. M. R. HARRISON, ARTIST,

Begs most respectfully to inform the Ladies and Gentlemen of
and its vicinity, that he will Exhibit his

ILLUMINATED CHEMICAL DIORAMAS,

(IN THE STYLE OF DAGUERRE.)

On Monday Evening,

Quebec
June 8, 1846

and continue during the week.

at the Hotel de la Ville

Mr. H., as a Canadian Artist, confidently anticipates the patronage of those who foster and encourage the Fine Arts. He has for many months devoted his whole time, and an immense outlay, to the study and perfecting of this beautiful style of painting.

Each Painting covers a surface of canvass nearly 200 square feet, representing two distinct Pictures, which, from the peculiar style of execution, and the varied nature and combination of the illuminating-powers employed, produce changes the most astonishing, and at the same time the most natural, in the power of the Artist to effect.

View of Orleans Cathedral.

This Picture represents the grand front of Orleans Cathedral, which was founded by St. Altin, in the sixty-ninth year of the Christian Era, and was enlarged by St. Eubert, and his successors. It was afterwards partly destroyed by the Northmen, and was re-constructed the third time by Robert De Corsiæ and Gillas Pastay, his successor, in 1287, and in the year 1567, it was again partly destroyed by the Calvinists, by springing of mines in the principal portals.

The present Cathedral was constructed by Henry IVth, King of France, and Pope Clement the VIII. The interior is decorated with divers statues of great beauty, by the celebrated Dargoullan and Bourdin. This Cathedral is built in Gothic or pointed style, and is considered one of the best specimens on the Continent of Europe.

This Picture after passing through all the gradations of light, from day to night, will appear as though illuminated by the silver beams of the rising moon; producing a surprising change in the sky. The several windows of the surrounding buildings will be lit, and discover numerous figures passing to and entering the Cathedral, which will appear as when lit up for the celebration of Midnight Mass, displaying the Gothic painted windows, and part of the interior.

View of the City of Jerusalem and the Crucifixion.

This Picture, taken from the celebrated Painting by Martin, represents a distant view of

View of the City of Jerusalem and the Crucifixion.

This Picture, taken from the celebrated Painting by Martin, represents a distant view of

View of the City of Jerusalem and the Crucifixion.

This Picture, taken from the celebrated Painting by Martin, represents a distant view of the far-famed city. On the right will be perceived the crosses erected on Mount Calvary; in the centre, the gates of entrance through the walls to the city, which, together with the Mount and the adjacent country, will appear buried in repose, no figure at this time being seen;—a gradual change will take place over the whole face of the Picture, displaying the gorgeous tints of the eastern sunset, until the sky assumes an awful and terrific aspect, occasionally illumined by vivid flashes of lightning. The heavens will now appear to burst with a lurid light, gradually displaying the figures on the crosses, and the various groups composing the subject of the Crucifixion. After a while, all will appear to recede and die away, giving place to the beautiful, calm and quiet appearance of the break of day.

THE CITY OF RAMESSES, AND THE Departure of the Israelites!

This Picture represents the City of Rameses, the rendezvous of the children of Israel, from whence they took their departure from the land of Egypt.

Rameses was a city supposed to have been situated in the Eastern part of Egypt, called the land of Goshen, which was also hence termed the land of Rameses—it was one of the cities built by the Israelites as a treasure city, probably a store city, or as some translate it, a fortress for the Egyptians. Its position may be fixed about six or eight miles above the modern Cairo, a little to the south of the modern Babylon of the Persians. The ancient Letopolis, as Josephus says, that the children of Israel after quitting this place in their march to Succoth, passed by the latter city.—This Picture is a copy from a celebrated painting by Roberts, and is considered one of the most beautiful specimens of Architectural design. In the foreground to the left is the magnificent Palace of Pharaoh, which combined with the altars of the heathen Gods, the Pyramids, &c., compose a picture of inconceivable beauty. During the first part of the representation, not a figure will be seen, gradually the changes from noon to night come on when Pharaoh and his court are discovered assembled in front of the royal palace, to witness the departure of the Israelites, with their camels, elephants, &c., swelling into a countless multitude. The figure of Moses will be seen to occupy a position on the right, as if giving command.

Interior of Rheims Cathedral, AND ENTHRONIZATION OF CHARLES X., KING OF FRANCE.

This Cathedral was built in the 12th Century, and is regarded as an exceedingly grand and imposing structure. It is rendered still further remarkable as the building long dedicated to the ceremony of Anointing and Consecrating the Kings of France. The picture represents the Choir, the floor of which, is much admired, being composed of Lozenges of different colored marble—in the centre stands the Throne on which the Kings of France for ages have taken their successive seats. The picture will undergo the usual gradations of light, and will again appear, when the Enthronization of Charles X. King of France will be presented. The Cathedral will appear illuminated by innumerable wax candles, and decorated in a style of the most gorgeous magnificence. On the Throne will be discovered the King in the attitude of delivering his speech to the assembled Nobles and Clergy. The figures will then recede, giving place to the calm appearance of daybreak.

Doors open at half-past seven; Exhibition to commence at eight o'clock precisely.
Tickets, 2s. 6d.: Children half price—to be had at







