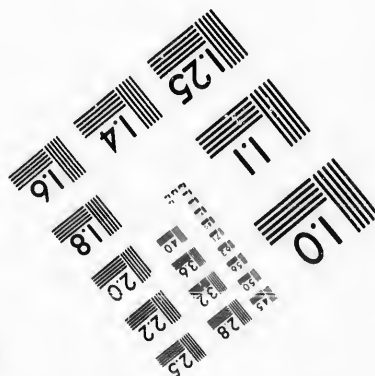
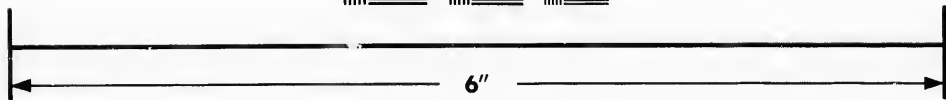
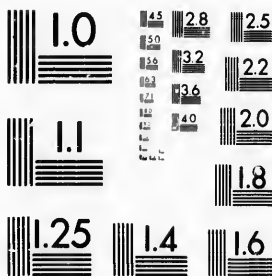


**IMAGE EVALUATION  
TEST TARGET (MT-3)**



**Photographic  
Sciences  
Corporation**

23 WEST MAIN STREET  
WEBSTER, N.Y. 14580  
(716) 872-4503

15  
16  
18  
19  
20  
22  
28  
32  
35

**CIHM/ICMH  
Microfiche  
Series.**

**CIHM/ICMH  
Collection de  
microfiches.**



Canadian Institute for Historical Microreproductions / Institut canadien de microreproductions historiques

10  
11  
12  
13  
14

**© 1987**

Technical and Bibliographic Notes/Notes techniques et bibliographiques

The Institute has attempted to obtain the best original copy available for filming. Features of this copy which may be bibliographically unique, which may alter any of the images in the reproduction, or which may significantly change the usual method of filming, are checked below.

L'Institut a microfilmé le meilleur exemplaire qu'il lui a été possible de se procurer. Les détails de cet exemplaire qui sont peut-être uniques du point de vue bibliographique, qui peuvent modifier une image reproduite, ou qui peuvent exiger une modification dans la méthode normale de filmage sont indiqués ci-dessous.

- |  |  |
|--|--|
| <input type="checkbox"/> Coloured covers/<br>Couverture de couleur   | <input type="checkbox"/> Coloured pages/<br>Pages de couleur   |
| <input type="checkbox"/> Covers damaged/<br>Couverture endommagée  | <input type="checkbox"/> Pages damaged/<br>Pages endommagées   |
| <input type="checkbox"/> Covers restored and/or laminated/<br>Couverture restaurée et/ou pelliculée  | <input type="checkbox"/> Pages restored and/or laminated/<br>Pages restaurées et/ou pelliculées  |
| <input type="checkbox"/> Cover title missing/<br>Le titre de couverture manque   | <input checked="" type="checkbox"/> Pages discoloured, stained or foxed/<br>Pages décolorées, tachetées ou piquées   |
| <input type="checkbox"/> Coloured maps/<br>Cartes géographiques en couleur   | <input type="checkbox"/> Pages detached/<br>Pages détachées  |
| <input type="checkbox"/> Coloured ink (i.e. other than blue or black)/<br>Encre de couleur (i.e. autre que bleue ou noire)   | <input checked="" type="checkbox"/> Showthrough/<br>Transparence   |
| <input type="checkbox"/> Coloured plates and/or illustrations/<br>Planches et/ou illustrations en couleur  | <input type="checkbox"/> Quality of print varies/<br>Qualité inégale de l'impression   |
| <input type="checkbox"/> Bound with other material/<br>Relié avec d'autres documents   | <input type="checkbox"/> Includes supplementary material/<br>Comprend du matériel supplémentaire   |
| <input type="checkbox"/> Tight binding may cause shadows or distortion<br>along interior margin/<br>La reliure serrée peut causer de l'ombre ou de la<br>distorsion le long de la marge intérieure   | <input type="checkbox"/> Only edition available/<br>Seule édition disponible   |
| <input type="checkbox"/> Blank leaves added during restoration may<br>appear within the text. Whenever possible, these<br>have been omitted from filming/<br>Il se peut que certaines pages blanches ajoutées<br>lors d'une restauration apparaissent dans le texte,<br>mais, lorsque cela était possible, ces pages n'ont<br>pas été filmées. | <input type="checkbox"/> Pages wholly or partially obscured by errata<br>slips, tissues, etc., have been refilmed to<br>ensure the best possible image/<br>Les pages totalement ou partiellement<br>obscurcies par un feuillet d'errata, une pelure,<br>etc., ont été filmées à nouveau de façon à<br>obtenir la meilleure image possible. |
| <input checked="" type="checkbox"/> Additional comments:/<br>Commentaires supplémentaires:   | [Printed ephemera] [4] p.  |

This item is filmed at the reduction ratio checked below/  
Ce document est filmé au taux de réduction indiqué ci-dessous.

10X	14X	18X	22X	26X	30X
<input type="checkbox"/>	<input type="checkbox"/>	<input checked="" type="checkbox"/>	<input type="checkbox"/>	<input type="checkbox"/>	<input type="checkbox"/>
12X	16X	20X	24X	28X	32X

The copy filmed here has been reproduced thanks to the generosity of:

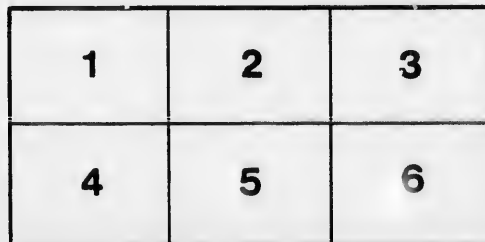
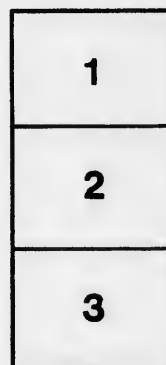
New Brunswick Museum  
Saint John

The images appearing here are the best quality possible considering the condition and legibility of the original copy and in keeping with the filming contract specifications.

Original copies in printed paper covers are filmed beginning with the front cover and ending on the last page with a printed or illustrated impression, or the back cover when appropriate. All other original copies are filmed beginning on the first page with a printed or illustrated impression, and ending on the last page with a printed or illustrated impression.

The last recorded frame on each microfiche shall contain the symbol  $\rightarrow$  (meaning "CONTINUED"), or the symbol  $\nabla$  (meaning "END"), whichever applies.

Maps, plates, charts, etc., may be filmed at different reduction ratios. Those too large to be entirely included in one exposure are filmed beginning in the upper left hand corner, left to right and top to bottom, as many frames as required. The following diagrams illustrate the method:



L'exemplaire filmé fut reproduit grâce à la générosité de:

New Brunswick Museum  
Saint John

Les images suivantes ont été reproduites avec le plus grand soin, compte tenu de la condition et de la netteté de l'exemplaire filmé, et en conformité avec les conditions du contrat de filmage.

Les exemplaires originaux dont la couverture en papier est imprimée sont filmés en commençant par le premier plat et en terminant soit par la dernière page qui comporte une empreinte d'impression ou d'illustration, soit par le second plat, selon le cas. Tous les autres exemplaires originaux sont filmés en commençant par la première page qui comporte une empreinte d'impression ou d'illustration et en terminant par la dernière page qui comporte une telle empreinte.

Un des symboles suivants apparaîtra sur la dernière image de chaque microfiche, selon le cas: le symbole  $\rightarrow$  signifie "A SUIVRE", le symbole  $\nabla$  signifie "FIN".

Les cartes, planches, tableaux, etc., peuvent être filmés à des taux de réduction différents. Lorsque le document est trop grand pour être reproduit en un seul cliché, il est filmé à partir de l'angle supérieur gauche, de gauche à droite, et de haut en bas, en prenant le nombre d'images nécessaire. Les diagrammes suivants illustrent la méthode.

ails  
du  
odifier  
une  
image

rrata  
to

pelure,  
n à



32X

5159

# Jubilee Entertainment

OF THE

NEW BRUNSWICK

S. P.

C. A.



BANDS OF MERCY.

JUNE, 1887.



## JUBILEE HYMN.

[Tune, "Old Hundredth."]

**O** GOD, our Father's God and ours,  
Before Thy throns we bow the knee:  
Pour down Thy mercy's richest showers  
Upon Our Sovereign's Jubilee.

We bless Thee for her blessed past,  
For holy thoughts of things that were;  
For love that must for ever last,  
And all Thy love to us in her.

For years of sunshine, calm and bright,  
And storm clouds always rainbow spann'd:  
For her sweet home, which sheds its light  
On all homes of our fatherland.

And with our praises one strong prayer  
From morn till night, from night till morn,  
Breathes on the universal air,  
And to the Throne of thrones is borne;—

God save the Queen, save, bless, defend  
The Mother Queen of land and sea,  
God save the Queen, world without end,  
Till earth keep Heaven's great Jubilee.

## HYMN II.

[Tune, "Austria."]

**L**ORD of heaven, earth and ocean,  
Hear us from Thy bright abode,  
While our hearts with deep devotion  
Supplicate their gracious God:  
That among our hills and mountains,  
And in every lowly vale  
Of our land, the power of kindness  
May o'er all our hearts prevail.

Health and every needful blessing  
Are Thy bounteous gifts alone,  
Comforts undeserved possessing,  
Low we bend before Thy throne:  
Grant that beasts that roam the forest,  
And the birds in green wood tree,  
And the meanest thing that creepeth,  
Should most kindly treated be.

Teach us, Lord, this noble lesson;  
Do Thou aid us in the strife,  
Do Thou make us brave and gentle  
On the battlefield of life.  
Children then shall stand before Thee  
Songs of ceaseless praise to sing.  
Lord of life and light and glory  
Bless our Bands and bless our Queen.

### HYMN III.

[*Tune Adapted.*]

WE are marching from the mountains,  
We are marching o'er the plain,  
To undo the heavy burdens  
Where such want and sorrow reign!  
'Midst the teeming life of millions,  
In the busy marts of trade,  
We are breaking off the fetters  
On the dumb and weary laid.

*Cho.*—Who will join our Bands of Mercy  
To undo the weary chain?  
We will join your Bands of Mercy,  
Send the answer back again.

You may see our peaceful banners,  
They are floating near and far,  
With a pledge of Love and Mercy  
To each gold and silver star.  
From the stately homes of England  
Comes the greeting o'er the main;  
And the wide plains of Columbia  
Sound the watchword back again.

*Cho.*—Who will join, etc., etc.

From each city and each village  
In our broad Canadian land,  
Let us send the happy summons  
Far and wide, from every Band.  
Come and march beneath our banners,  
They are everywhere unfurled,  
That sweet Love and Peace and Mercy  
May encircle all the world.

*Cho.*—Who will join, etc., etc.

### HYMN IV.

#### NATIONAL ANTHEM.

GOD save our gracious Queen,  
Long live our noble Queen,  
God save the Queen.  
Send her victorious,  
Happy and glorious,  
Long to reign over us;  
God save the Queen.

Before *Thy* throne we bend,  
To Thee our thanks ascend,  
All praise to Thee;  
That Thou hast been her stay,  
Been with her all her way,  
Brought her to this glad day—  
Her Jubilee.

Such blessings from Thy hand,  
Scattered upon *our* land,  
Have ne'er been seen;  
Thy word so full and free,  
Thy dower of land and sea,  
This gladsome Jubilee  
Of England's Queen.

When health and strength decay,  
Be Thou, O Lord, her stay,  
God save our Queen;  
Ever her people's friend,  
Be with her to the end,  
Till grace with glory blend,  
God save the Queen.

# BAND OF MERCY.



## MEMBERS' DECLARATION.

We agree to be kind to Animals,  
and to do all in our power to protect  
them from cruelty and promote their  
humane treatment.



