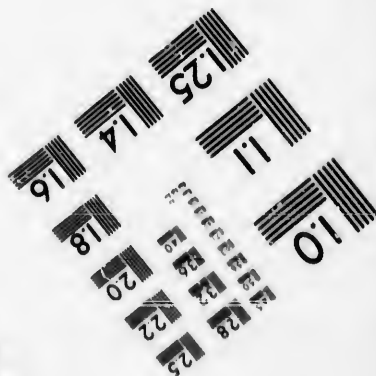
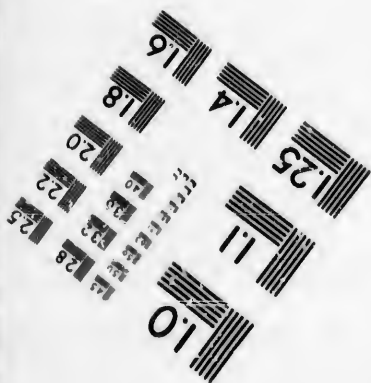
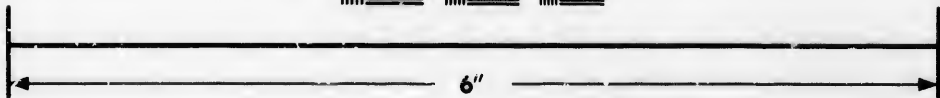
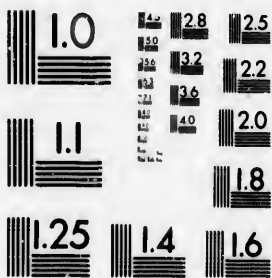


**IMAGE EVALUATION
TEST TARGET (MT-3)**



**Photographic
Sciences
Corporation**

23 WEST MAIN STREET
WEBSTER, N.Y. 14580
(716) 872-4503

**CIHM/ICMH
Microfiche
Series.**

**CIHM/ICMH
Collection de
microfiches.**



Canadian Institute for Historical Microreproductions / Institut canadien de microreproductions historiques

© 1985

Technical and Bibliographic Notes/Notes techniques et bibliographiques

The Institute has attempted to obtain the best original copy available for filming. Features of this copy which may be bibliographically unique, which may alter any of the images in the reproduction, or which may significantly change the usual method of filming, are checked below.

L'Institut a microfilmé le meilleur exemplaire qu'il lui a été possible de se procurer. Les détails de cet exemplaire qui sont peut-être uniques du point de vue bibliographique, qui peuvent modifier une image reproduite, ou qui peuvent exiger une modification dans la méthode normale de filmage sont indiqués ci-dessous.

- | | |
|--|--|
| <input type="checkbox"/> Coloured covers/
Couverture de couleur | <input type="checkbox"/> Coloured pages/
Pages de couleur |
| <input type="checkbox"/> Covers damaged/
Couverture endommagée | <input type="checkbox"/> Pages damaged/
Pages endommagées |
| <input type="checkbox"/> Covers restored and/or laminated/
Couverture restaurée et/ou pelliculée | <input type="checkbox"/> Pages restored and/or laminated/
Pages restaurées et/ou pelliculées |
| <input type="checkbox"/> Cover title missing/
Le titre de couverture manque | <input checked="" type="checkbox"/> Pages discoloured, stained or foxed/
Pages décolorées, tachetées ou piquées |
| <input type="checkbox"/> Coloured maps/
Cartes géographiques en couleur | <input type="checkbox"/> Pages detached/
Pages détachées |
| <input type="checkbox"/> Coloured ink (i.e. other than blue or black)/
Encre de couleur (i.e. autre que bleue ou noire) | <input checked="" type="checkbox"/> Showthrough/
Transparence |
| <input type="checkbox"/> Coloured plates and/or illustrations/
Planches et/ou illustrations en couleur | <input type="checkbox"/> Quality of print varies/
Qualité inégale de l'impression |
| <input type="checkbox"/> Bound with other material/
Relié avec d'autres documents | <input type="checkbox"/> Includes supplementary material/
Comprend du matériel supplémentaire |
| <input type="checkbox"/> Tight binding may cause shadows or distortion
along interior margin/
La liure serrée peut causer de l'ombre ou de la
distorsion le long de la marge intérieure | <input type="checkbox"/> Only edition available/
Seule édition disponible |
| <input type="checkbox"/> Blank leaves added during restoration may
appear within the text. Whenever possible, these
have been omitted from filming/
Il se peut que certaines pages blanches ajoutées
lors d'une restauration apparaissent dans le texte,
mais, lorsque cela était possible, ces pages n'ont
pas été filmées. | <input type="checkbox"/> Pages wholly or partially obscured by errata
slips, tissues, etc., have been refilmed to
ensure the best possible image/
Les pages totalement ou partiellement
obscurcies par un feuillet d'errata, une pelure,
etc., ont été filmées à nouveau de façon à
obtenir la meilleure image possible. |
| <input checked="" type="checkbox"/> Additional comments: [Printed ephemera] 1 sheet (verso blank)
Commentaires supplémentaires: | |

This item is filmed at the reduction ratio checked below/
Ce document est filmé au taux de réduction indiqué ci-dessous.

10X	14X	18X	22X	26X	30X
<input type="checkbox"/>	<input type="checkbox"/>	<input type="checkbox"/>	<input type="checkbox"/>	<input checked="" type="checkbox"/>	<input type="checkbox"/>
12X	16X	20X	24X	28X	32X

The copy filmed here has been reproduced thanks to the generosity of:

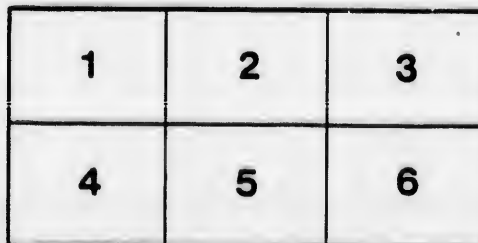
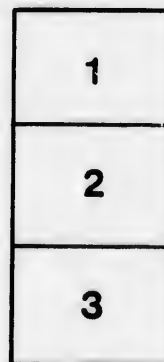
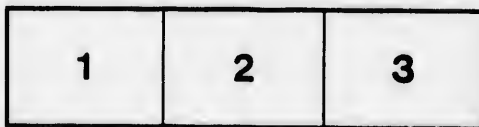
D. B. Weldon Library
University of Western Ontario
(Regional History Room)

The images appearing here are the best quality possible considering the condition and legibility of the original copy and in keeping with the filming contract specifications.

Original copies in printed paper covers are filmed beginning with the front cover and ending on the last page with a printed or illustrated impression, or the back cover when appropriate. All other original copies are filmed beginning on the first page with a printed or illustrated impression, and ending on the last page with a printed or illustrated impression.

The last recorded frame on each microfiche shall contain the symbol \rightarrow (meaning "CONTINUED"), or the symbol ∇ (meaning "END"), whichever applies.

Maps, plates, charts, etc., may be filmed at different reduction ratios. Those too large to be entirely included in one exposure are filmed beginning in the upper left hand corner, left to right and top to bottom, as many frames as required. The following diagrams illustrate the method:



L'exemplaire filmé fut reproduit grâce à la générosité de:

D. B. Weldon Library
University of Western Ontario
(Regional History Room)

Les images suivantes ont été reproduites avec le plus grand soin, compte tenu de la condition et de la netteté de l'exemplaire filmé, et en conformité avec les conditions du contrat de filmage.

Les exemplaires originaux dont la couverture en papier est imprimée sont filmés en commençant par le premier plat et en terminant soit par la dernière page qui comporte une empreinte d'impression ou d'illustration, soit par le second plat, selon le cas. Tous les autres exemplaires originaux sont filmés en commençant par la première page qui comporte une empreinte d'impression ou d'illustration et en terminant par la dernière page qui comporte une telle empreinte.

Un des symboles suivants apparaîtra sur la dernière image de chaque microfiche, selon le cas: le symbole \rightarrow signifie "A SUIVRE", le symbole ∇ signifie "FIN".

Les cartes, planches, tableaux, etc., peuvent être filmés à des taux de réduction différents. Lorsque le document est trop grand pour être reproduit en un seul cliché, il est filmé à partir de l'angle supérieur gauche, de gauche à droite, et de haut en bas, en prenant le nombre d'images nécessaires. Les diagrammes suivants illustrent la méthode.

rrata
to

pelure,
n à

The Canadian Farmer.

A WEEKLY PAPER, ESTABLISHED 1878.

PUBLISHED IN WELLAND,

ONT., BY THE

WELLAND PRINTING & PUBLISHING CO.



THE CANADIAN FARMER is the **only** farm journal in the Dominion **issued every week**, and no words can speak stronger for its usefulness than to say, that although only started in 1878 it now has a circulation of nearly **10,000 COPIES**.

It is illustrated in all its Departments,

Which comprise the Farm, Agriculture, Horticulture, the Orchard, the Dairy, the Forest, Apiary, Poultry, Ladies, Household, and special attention to the Young Folks' columns. In fact it contains everything pertaining to **Farmers and their Homes**.



It is the *Acknowledged Organ of the*
Bee-Keepers' Association,
of Ontario.



ITS RELIABLE CROP REPORTS are invaluable, and the latest Home and Foreign Markets each week enable the producer to watch the prices paid by the consumer both at home and abroad.



OUR STAFF.

In addition to our regular staff of able writers, the following are among our constant contributors on different subjects:



Horticulture—C. J. Whitney, Muskegon, Mich.

Grape Culture—Dr. Joy, Tilsenburgh; P. H. Hendershot, Stevensville.

Poultry—Geo. Elliott, Pt. Robinson.

Apiary—Hon. L. Wallbridge, Belleville; D. A. Jones, Beeton; R. McKnight, Owen Sound; M. Richardson, Port Colborne.

General Farm Subjects—The following in the different Provinces: Ontario—M. McQuade, Egmondville; S. T. Pettit, Belmont; Thos. Chisholm, Mansewood; John Robinson, Sandfield, Manitoulin Island; Jabel



Robinson, Middlemarch; R. F. Hathaway, Union; B. Losee, Cobourg. Quebec—Levi B. Whitman, Knowlton. Nova Scotia—E. S. Creed, Newport; Geo. Creed, South Rawdon; Col. Sarratt, Paradise; S. T. R. Hill, M.P., Liverpool; W. M. Biall, M.P. P., Truro. New Brunswick—Capt. Wm. Milner, Sackville. British Columbia—Col. Miller, Chilliwack; Alex Peers, New Westminster; John Wilson, Sumas. Manitoba—Judge Miller, Winnipeg. North West Territory—S. Burgess, Minnedosa;

Besides occasional correspondence from all parts of the Dominion and United States, and from friends of the proprietors who are travelling in all parts of the world, thus making the **Canadian Farmer** a thorough

HOME MAGAZINE.

The size of this valuable journal is 16 pages, (each 10 x 13½) folded, pasted, and the leaves cut by machinery, so that it is very convenient for reading and binding.

Published every Wednesday
to any address, (Postage
per year

\$1

throughout the year, and sent
Prepaid) for One Dollar
in advance.

Send for Sample Copies which are sent free to any address.

It is the Best Advertising Medium in Canada.

W. F. Page, Toronto
S. W. Hill, Ridgeville } Editors.

N. B. COLOCOCK,
General Manager.

Address—Welland Printing and Publishing Company, Welland, Ont.

