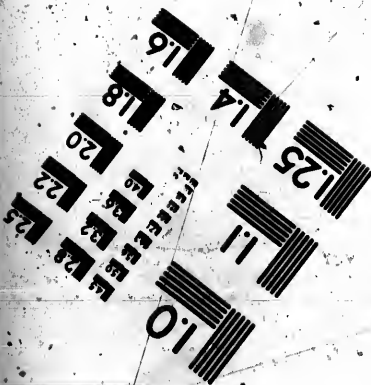
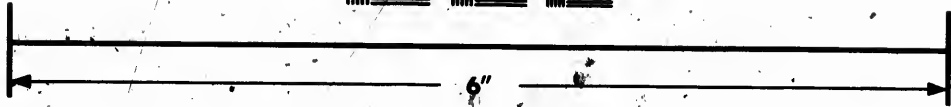
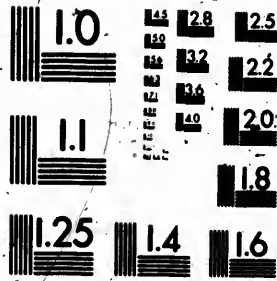


**IMAGE EVALUATION  
TEST TARGET (MT-3)**



**Photographic  
Sciences  
Corporation**

23 WEST MAIN STREET  
WEBSTER, N.Y. 14580  
(716) 872-4508

**CIHM  
Microfiche  
Series  
(Monographs)**

**ICMH  
Collection de  
microfiches  
(monographies)**



**Canadian Institute for Historical Microreproductions / Institut canadien de microreproductions historiques**

**© 1991**



The copy filmed here has been reproduced thanks to the generosity of:

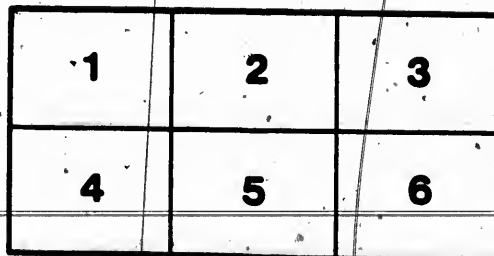
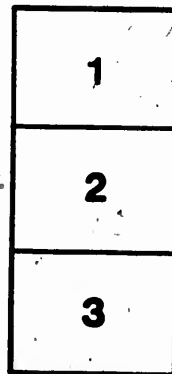
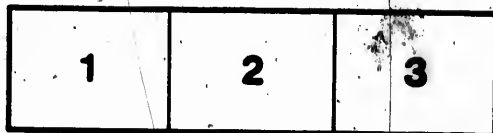
Library of the National Archives of Canada

The images appearing here are the best quality possible considering the condition and legibility of the original copy and in keeping with the filming contract specifications.

Original copies in printed paper covers are filmed beginning with the front cover and ending on the last page with a printed or illustrated impression, or the back cover when appropriate. All other original copies are filmed beginning on the first page with a printed or illustrated impression, and ending on the last page with a printed or illustrated impression.

The last recorded frame on each microfiche shall contain the symbol  $\rightarrow$  (meaning "CONTINUED"), or the symbol  $\nabla$  (meaning "END"), whichever applies.

Maps, plates, charts, etc., may be filmed at different reduction ratios. Those too large to be entirely included in one exposure are filmed beginning in the upper left hand corner, left to right and top to bottom, as many frames as required. The following diagrams illustrate the method:



L'exemplaire filmé fut reproduit grâce à la générosité de:

La bibliothèque des Archives nationales du Canada

Les images suivantes ont été reproduites avec le plus grand soin, compte tenu de la condition et de la netteté de l'exemplaire filmé, et en conformité avec les conditions du contrat de filmage.

Les exemplaires originaux dont la couverture en papier est imprimée sont filmés en commençant par le premier plat et en terminant soit par la dernière page qui comporte une empreinte d'impression ou d'illustration, soit par le second plat, selon le cas. Tous les autres exemplaires originaux sont filmés en commençant par la première page qui comporte une empreinte d'impression ou d'illustration et en terminant par la dernière page qui comporte une telle empreinte.

Un des symboles suivants apparaîtra sur la dernière image de chaque microfiche, selon le cas: le symbole  $\rightarrow$  signifie "A SUIVRE", le symbole  $\nabla$  signifie "FIN".

Les cartes, planches, tableaux, etc., peuvent être filmés à des taux de réduction différents. Lorsque le document est trop grand pour être reproduit en un seul cliché, il est filmé à partir de l'angle supérieur gauche, de gauche à droite, et de haut en bas, en prenant le nombre d'images nécessaire. Les diagrammes suivants illustrent la méthode.

1882

1882

# GALT MACHINE WORKS

(FOUNDRY AND MACHINE SHOP—Established 1872.)

## CANT, GOURLAY & CO.

PROPRIETORS.

### WOOD WORKING MACHINERY

A SPECIALTY.

And for this line of manufacture, as a specialty, the firm have received the only awards of GOLD MEDALS hitherto made at Provincial Exhibitions in Canada, besides Diplomas and other Prizes too numerous to recapitulate.

### GOLD MEDALS.

Provincial Exhibition—held at Ottawa.	.. .. .	1875
Do. Do. —held at Hamilton,	.. .. .	1876
Do. Do. —held at Toronto,	.. .. .	1878
Dominion—under auspices of Princess Louise and His Excellency the Governor-General—held at Ottawa,	.. .. .	1879

Press of orders in 1880 and 1881 debarred us putting in any appearance at the Exhibitions of those years.

:0:

OFFICE AND WORKSHOPS:

CLOSE TO GREAT WESTERN RAILWAY STATION,

GALT, ONTARIO.

# GALT MACHINE WORKS

---

1882. ○ PRICE LIST. ○ 1882.

(APPENDIX.)

---

## CONDITIONS OF SALE.

AT FIGURES given on Detail Price List, the following are the CONDITIONS upon which we wish our customers to understand that orders will be booked, unless otherwise arranged by special contract.—The order to be filled in or recapitulated upon a printed form which we supply:—

On Sales amounting to \$100 or over, one third cash; balance in equal instalments at three and six months.

On Sales under \$100 and not less than \$30, one third cash; balance at four months.

On either of the above class of Sales, if paid cash in full, 5 per cent. off.

All orders for Repairs, or for any article Catalogued, and which does not amount to \$30—Terms: *Nett Cash*; and on these, shipments, as a rule, will be made C. O. D.

---

N. B.—We are thus particular in specifying conditions in order to avoid misunderstandings, and that owing to the fact that our Manufactures are now so well known throughout all the Provinces of the Dominion, it is mainly by correspondence, and not by strenuous personal canvass; that our contracts are arranged. Proprietors of Planing Mills, Furniture Factories, &c., are requested to correspond regarding Machines wanted, even if not on our List, as we are constantly in process of adding new Machines to it.

CANT, GOURLAY & CO.

GALT, 1882.

