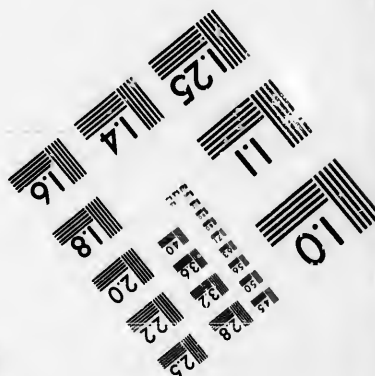
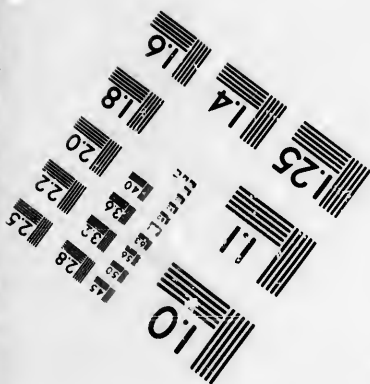
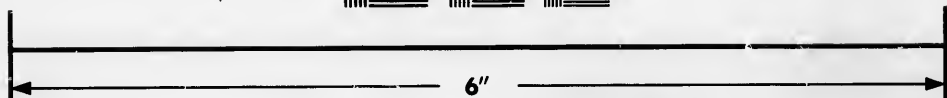
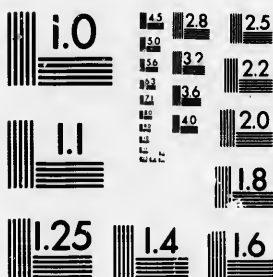


**IMAGE EVALUATION
TEST TARGET (MT-3)**



**Photographic
Sciences
Corporation**

23 WEST MAIN STREET
WEBSTER, N.Y. 14580
(716) 872-4503

1.5 1.8 2.0 2.2 2.5
2.8 3.2 3.6 4.0

**CIHM/ICMH
Microfiche
Series.**

**CIHM/ICMH
Collection de
microfiches.**



Canadian Institute for Historical Microreproductions / Institut canadien de microreproductions historiques

10
11
12
13
14
15
16
17
18
19
20
21
22
23
24
25
26
27
28
29
30
31
32
33
34
35
36
37
38
39
40

© 1985

Technical and Bibliographic Notes/Notes techniques et bibliographiques

The Institute has attempted to obtain the best original copy available for filming. Features of this copy which may be bibliographically unique, which may alter any of the images in the reproduction, or which may significantly change the usual method of filming, are checked below.

L'Institut a microfilmé le meilleur exemplaire qu'il lui a été possible de se procurer. Les détails de cet exemplaire qui sont peut-être uniques du point de vue bibliographique, qui peuvent modifier une image reproduite, ou qui peuvent exiger une modification dans la méthode normale de filmage sont indiqués ci-dessous.

- | | |
|--|--|
| <input type="checkbox"/> Coloured covers/
Couverture de couleur | <input type="checkbox"/> Coloured pages/
Pages de couleur |
| <input type="checkbox"/> Covers damaged/
Couverture endommagée | <input type="checkbox"/> Pages damaged/
Pages endommagées |
| <input type="checkbox"/> Covers restored and/or laminated/
Couverture restaurée et/ou pelliculée | <input type="checkbox"/> Pages restored and/or laminated/
Pages restaurées et/ou pelliculées |
| <input type="checkbox"/> Cover title missing/
Le titre de couverture manque | <input checked="" type="checkbox"/> Pages discoloured, stained or foxed/
Pages décolorées, tachetées ou piquées |
| <input type="checkbox"/> Coloured maps/
Cartes géographiques en couleur | <input checked="" type="checkbox"/> Pages detached/
Pages détachées |
| <input type="checkbox"/> Coloured ink (i.e. other than blue or black)/
Encre de couleur (i.e. autre que bleue ou noire) | <input checked="" type="checkbox"/> Showthrough/
Transparence |
| <input type="checkbox"/> Coloured plates and/or illustrations/
Planches et/ou illustrations en couleur | <input type="checkbox"/> Quality of print varies/
Qualité inégale de l'impression |
| <input type="checkbox"/> Bound with other material/
Relié avec d'autres documents | <input type="checkbox"/> Includes supplementary material/
Comprend du matériel supplémentaire |
| <input type="checkbox"/> Tight binding may cause shadows or distortion
along interior margin/
La reliure serrée peut causer de l'ombre ou de la
distorsion le long de la marge intérieure | <input type="checkbox"/> Only edition available/
Seule édition disponible |
| <input type="checkbox"/> Blank leaves added during restoration may
appear within the text. Whenever possible, these
have been omitted from filming/
Il se peut que certaines pages blanches ajoutées
lors d'une restauration apparaissent dans le texte,
mais, lorsque cela était possible, ces pages n'ont
pas été filmées. | <input type="checkbox"/> Pages wholly or partially obscured by errata
slips, tissues, etc., have been refilmed to
ensure the best possible image/
Les pages totalement ou partiellement
obscurcies par un feuillet d'errata, une pelure,
etc., ont été filmées à nouveau de façon à
obtenir la meilleure image possible. |
- Additional comments:/ Commentaires supplémentaires: Pagination as follows : [29] - 51 p.

This item is filmed at the reduction ratio checked below/
Ce document est filmé au taux de réduction indiqué ci-dessous.

10X	14X	18X	22X	26X	30X
<input type="checkbox"/>	<input type="checkbox"/>	<input type="checkbox"/>	<input checked="" type="checkbox"/>	<input type="checkbox"/>	<input type="checkbox"/>
12X	16X	20X	24X	28X	32X

The copy filmed here has been reproduced thanks to the generosity of:

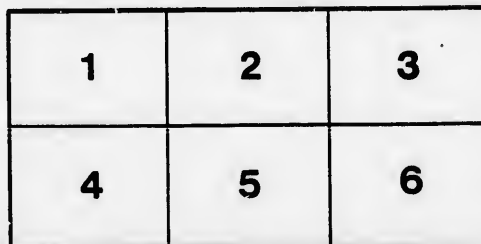
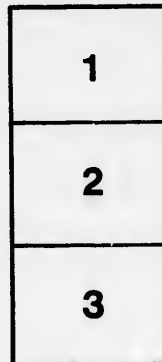
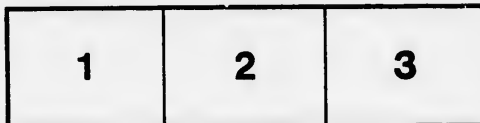
Législature d' Québec
Québec

The images appearing here are the best quality possible considering the condition and legibility of the original copy and in keeping with the filming contract specifications.

Original copies in printed paper covers are filmed beginning with the front cover and ending on the last page with a printed or illustrated impression, or the back cover when appropriate. All other original copies are filmed beginning on the first page with a printed or illustrated impression, and ending on the last page with a printed or illustrated impression.

The last recorded frame on each microfiche shall contain the symbol \rightarrow (meaning "CONTINUED"), or the symbol ∇ (meaning "END"), whichever applies.

Maps, plates, charts, etc., may be filmed at different reduction ratios. Those too large to be entirely included in one exposure are filmed beginning in the upper left hand corner, left to right and top to bottom, as many frames as required. The following diagrams illustrate the method:



L'exemplaire filmé fut reproduit grâce à la générosité de:

Législature du Québec
Québec

Les images suivantes ont été reproduites avec le plus grand soin, compte tenu de la condition et de la netteté de l'exemplaire filmé, et en conformité avec les conditions du contrat de filmage.

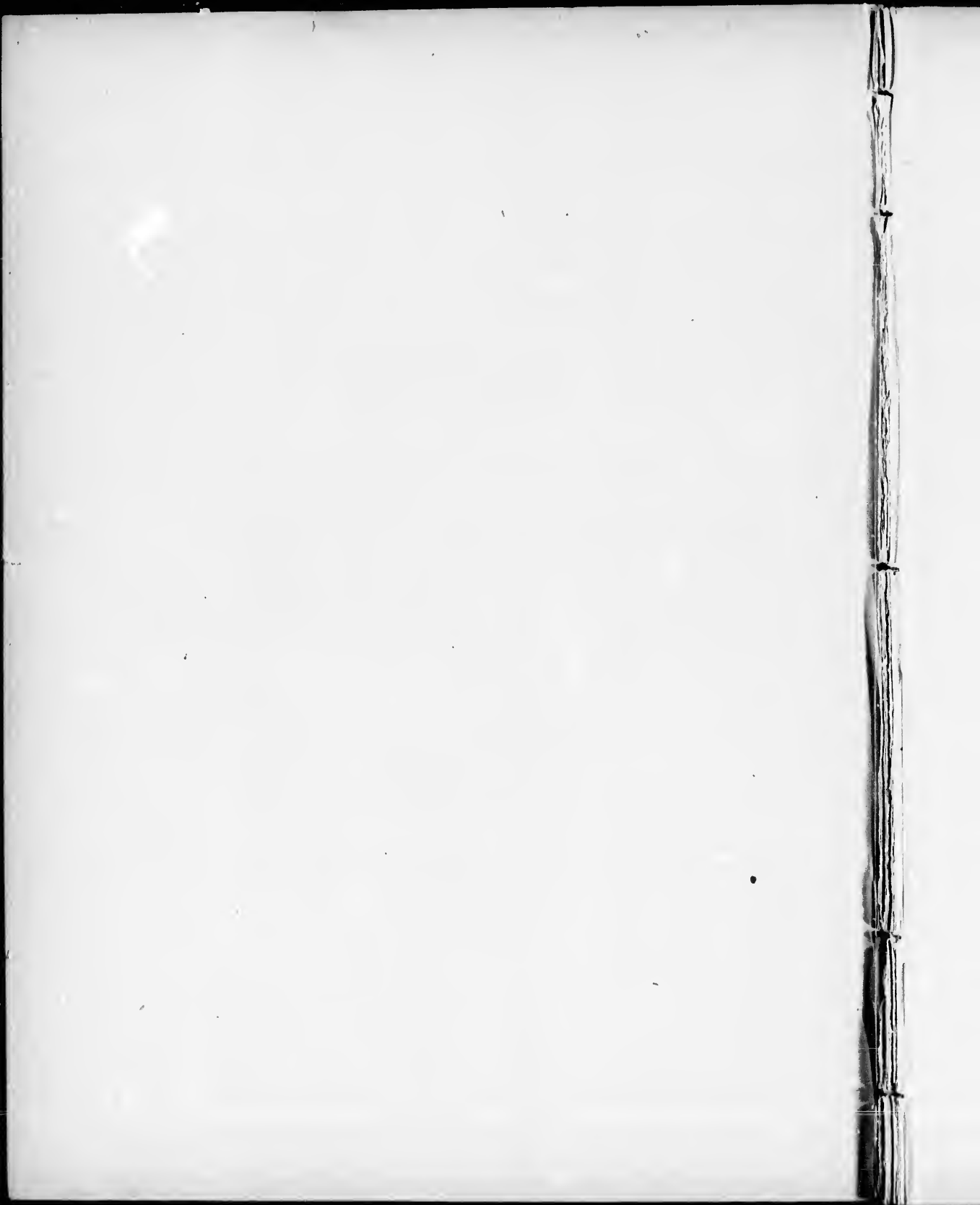
Les exemplaires originaux dont la couverture en papier est imprimée sont filmés en commençant par le premier plat et en terminant soit par la dernière page qui comporte une empreinte d'impression ou d'illustration, soit par le second plat, selon le cas. Tous les autres exemplaires originaux sont filmés en commençant par la première page qui comporte une empreinte d'impression ou d'illustration et en terminant par la dernière page qui comporte une telle empreinte.

Un des symboles suivants apparaît sur la dernière image de chaque microfiche, selon le cas: le symbole \rightarrow signifie "A SUIVRE", le symbole ∇ signifie "FIN".

Les cartes, planches, tableaux, etc., peuvent être filmés à des taux de réduction différents. Lorsque le document est trop grand pour être reproduit en un seul cliché, il est filmé à partir de l'angle supérieur gauche, de gauche à droite, et de haut en bas, en prenant le nombre d'images nécessaire. Les diagrammes suivants illustrent la méthode.

5

BUYER'S DIRECTORY



STOP!

Before reading further examine this sheet of paper. It is CANADIAN MANUFACTURE, and is better than any paper of the same grade that can be imported. :- :- :- :- :- :-

KEEP IT IN STOCK, YOU ARE SURE TO
BE ASKED FOR IT.

See that the Water-Mark, "SUPERFINE LINEN RECORD" is in each sheet. Imitations have already been offered for sale, which, in itself, is a guarantee that this Paper is FIRST-CLASS. Get Samples and Prices from

THE BARBER & ELLIS COMPANY, TORONTO



MANUFACTURED BY

—≡≡ROLLAND PAPER COMPANY≡≡—

E^s

MO

OU

C

■

I

f

ESTIMATES
FURNISHED

ESTABLISHED 1830

ORDERS
PROMPTLY
FILLED

DOMINION TYPE FOUNDRY

MONTREAL: 780 Craig Street
P. A. CROSSBY, MANAGER

TYPE FOUNDERS

NEWSPAPER DRESSES * JOB OFFICE OUTFITS

OUR BOOK AND
NEWSPAPER

TYPE

Cast from the best
Quality of Durable Metal

For Wear, Accuracy and Finish, EXCELLED BY NONE

Cast on our own or the "Point System."

Type of other Founders furnished when desired

Printing Presses, Printing Inks, Paper Cutters, etc.

SOLE AGENTS FOR CANADA

Orders for Type and
Material from this famous
foundry filled daily from
Philadelphia by *Express*, at
LIST PRICES.. *Special Dis-*
counts.

TYPE TELEGRAPHED FOR WITHOUT
EXTRA CHARGE

MacKellar,
Smiths & *
Jordan Co.

THE JOHNSON TYPE FOUNDRY, PHILADELPHIA

THE LINOTYPE

The Linotype is now employed in setting these papers and new machines are being sent out from the factories every week:

In Great Britain:—*Scottish Leader*, Edinburgh; *Mercury*, Leeds; *Daily Chronicle*, Newcastle; *Daily Telegraph*, Sheffield; *Guardian*, Nottingham, and in the office of the Economic Printing Company, London.

In the United States:—*Tribune*, *Herald*, *Commercial Bulletin*, *Morning Journal*, *Voice*, New York; *Standard Union*, Brooklyn; *Courier Journal*, Louisville; *Journal and Bulletin*, Providence, R.I.; the *Press*, Troy, N.Y.; *Journal*, Albany, N.Y.; *Commercial*, Toledo. Machines are being completed for the *Toledo Bee*, *St. Louis Star-Sayings*, *Oil City Derrick*, *Cincinnati Commercial Gazette*, *New Orleans Times-Democrat*, *New York Morning News*, *New York Staats-Zeitung*. The Linotype is also used for book and job work in the office of the Rapid Printing Co., New York.

CANADA:—The Government Printing Bureau, Ottawa.

Every Linotype is giving satisfaction.

The average rate of composition in the *Standard Union* office for week ending March 21st was 3,667 ems an hour, including all delays through waiting for copy or any other cause.

The Linotype saves the cost of type.

Papers set with the Linotype present a fresh face every day.

FACTS SWORN TO

In the case of the Linotype Company against the makers of the Rogers machine, through which the latter were restrained from putting their machine on the market, these facts were sworn to by witnesses:

"It would be more economical for the *New York Tribune* to pay \$2,000 a year for the use of each machine than to be deprived of their use. Their durability cannot now be questioned. The machines that have been in daily use for over four years do not show any appreciable wear (except in matrices, which have been renewed but once, at an expense of about \$60 per machine, and are still good) and show no diminution of efficiency, and from the present indications they will retain their efficiency for ten years or more, and then not fifteen per cent. of each machine will need replacing for another equal period."

(Signed) G. W. SHAFER, FOREMAN

Sworn to before me this 6th day of February, 1891

THOMAS N. WILLIAMS, Notary Public, (183), N.Y. Co.

"My observation and experience has been that they (the Linotypes) do not need the services of a machinist more than do an equal number of sewing or knitting machines run by steam power, * * * For three years past I have operated the same machine day by day, and it has not been out of good working condition an average of thirty minutes a month during that time.

I have no pecuniary interest in the machine, excepting I find their use a more attractive way of earning a livelihood than by manual typesetting."

(Signed) THOMAS MILLER

Sworn to before me this 4th day of February, 1891

ROBERT H. PATTEN TIGHE, Notary Public, City and County of N.Y.

"For eight consecutive months, commencing in the summer of 1887, and continuing to the spring of 1888, I worked six days every week, on the same machine, and produced from 225,000 to 250,000 corrected ems of matter per week. During this entire eight months I have no recollection, and do not believe that a machinist ever touched that machine.

All the editorial matter in the New York *Tribune* is set in brevier, and for more than two years past I have set it on one and the same machine. It is, and was then, the only brevier machine in the establishment, and exclusively relied upon to set up editorial matter. It has not needed, and so far as I have any knowledge or information, has not had the services of any machinist for a moment. My experience of more than four and a half years of continuous personal use of the Linotype machine and my observation of others operating it convinces me, and I have no hesitation in saying that it is very rare for the Linotype Machines to get out of working condition excepting by reason of the carelessness of the operator.

I am a printer and have never worked at any mechanical trade, and have no pecuniary interest in the Linotype machine, excepting as it makes life as a printer more attractive and lucrative."

(Signed) CHARLES E. RUDOLPH

Sworn to before me this 4th day of February, 1891

WM. M. GAGE, Notary Public, Kings County Court in New York County

"There are, and have been since I entered upon the work first aforesaid, (machinist in care of Linotypes in New York *Tribune* Office) forty-two Linotype machines in said composing room, and I say from personal knowledge that not one per cent. of time is lost in the use of them by reason of anything that requires the service of a machinist; that they run regularly, and while I make it a rule to examine each machine once in three months, I find that not one-fifth of them then need the attention of a machinist. * * * The machine is so constructed that if anything irregular happens that might work injury to it, the machine is stopped by automatic devices. This so seldom happens that it can hardly be taken into consideration."

(Signed) CHARLES WALTHER

Sworn to before me this 6th day of February, 1891

THOMAS N. WILLIAMS, Notary Public (183)

"There have been no typesetting contests but the men have often 'pulled out' to beat each others 'strings.' They do not, however, consider that any real records have been made. One man has set in sixty-one hours 309,000 ems, an average of about 5,100 per hour."—From the *Louisville Courier Journal*, Jan. 1, 1891

Mr. Charles P. Young in his evidence in the case mentioned above, swears that he began dictating from his shorthand notes to Mr. Underwood, an operator on the New Linotype, in February, 1890, and that in less than ten days the Linotype operator attained a speed of about 6,400 ems an hour, and that in October 1890, when Mr. Young ceased to use Mr. Underwood's services, "some of the work was done at the rate of over 8,000 ems an hour or 50 words a minute, which is about ten times the speed of hand composition of type."

After this Mr. Young adopted the phonograph and, working from it, Mr. Bailey, a young man of 21 years, began at a speed of 4,000 ems on the Linotype, "and continued to increase his speed until he has reached above 6,000 ems from the dictation of the phonograph, and has at times gone above 8,000 ems."

These machines are now being manufactured in Canada, as well as in Brooklyn, New York and Baltimore, in the United States, and Manchester, England.

For terms and other information address,

LINOTYPE COMPANY

OFFICE: "WITNESS" BUILDING

FACTORY: 25 BLEURY STREET

MONTREAL, P. Q.

THE HAMILTON MFG. CO.

MANUFACTURERS OF

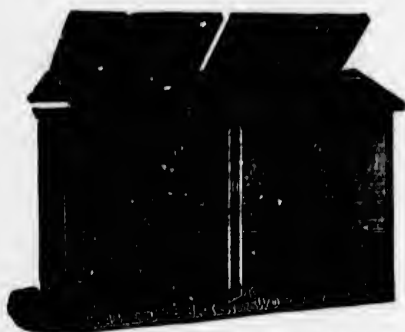
WOOD TYPE AND PRINTERS' WOOD GOODS

AND DEALERS IN

Printers' Machinery and Supplies

327 AND 329 DEARBORN ST.,

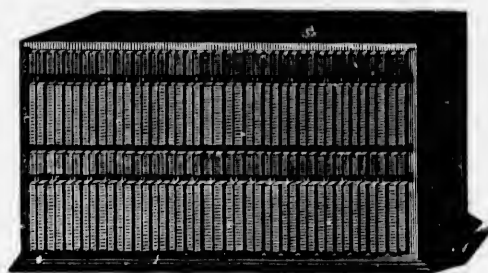
CHICAGO, ILLS.



Double Polhemus Cabinet, \$75.00

This Cabinet has 18 full sized Italic Cases, 20 $\frac{3}{4}$ Job Cases and 2 pairs News Cases on top. Cherry finish.

Send for descriptive Circular.



No. 3 Reglet Case, - \$15.00

This Reglet Case contains 4,200 pieces of Reglet half pica and half nonpareil. The pieces run from 10 to 51 ems long, 100 pieces of each length, varying by one pica only. This is a very convenient case for the compositor, as he has within reach any length desired without cutting and wasting Reglet for each job.

The No. 4 Reglet Case is the same as No. 3, with 50 pieces of each length instead of 100. Price \$8.00

Cases,
Cabinets,
Stands,
Galleys,
Galley Racks,
Galley Cabinets,

Engravers' Wood,
Sort Cabinets,
Imposing Stone Frames,
Newspaper Files,
Roller Frames and Stocks,
Standing Galleys,

Cutting Sticks,
Drying Racks,
Electrotype Backing,
Mail List Cabinets,
Reglet and Furniture,
Planers and Mallets,
Etc., Etc., Etc.

Job Sticks,
Labor Saving Furniture Cases
Labor Saving Reglet Cases,
Press Boards,
Wood Quoins,
Book Binders' Cabinets.

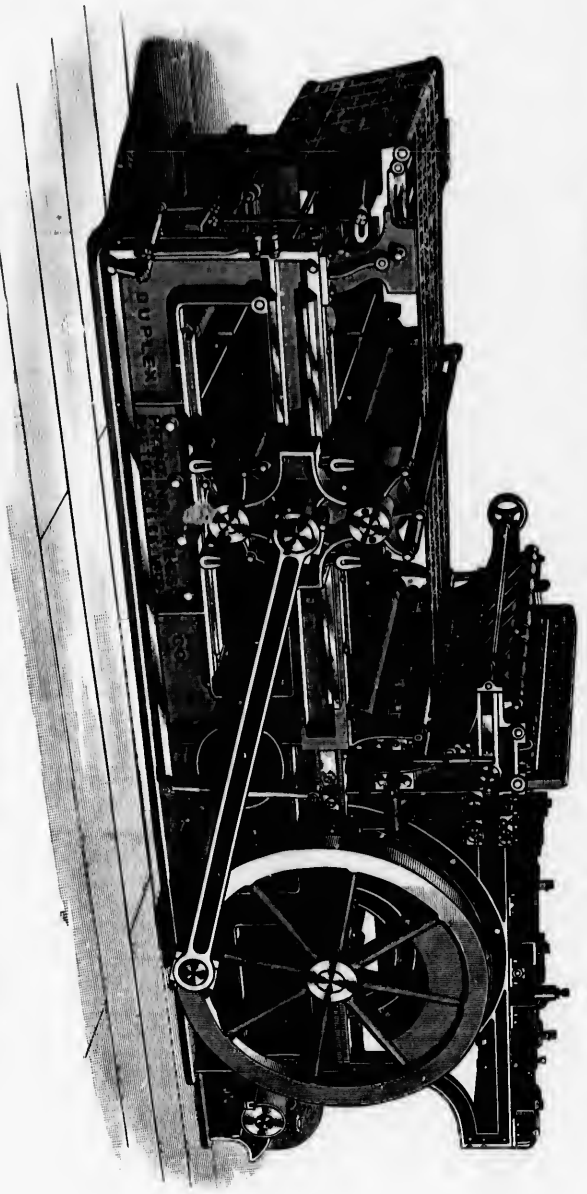
Having purchased the business of The Wm. H. Page Wood Type Co., Norwich, Conn., we take pleasure in informing our patrons and the trade in general that with our increased facilities in the acquirement of new designs and patterns and all the latest improved methods of manufacture we are enabled to fill the largest orders for Wood Type, Borders, Engravers' Wood, and all Printers' Wood Goods in the most prompt and satisfactory manner.

We will gladly furnish estimates on **Special Cabinets**, or any article of **Printers' Furniture** that may be desired. We are the manufacturers of the new **Hamilton-Boss Lower Case**. In this Case the thin spaces are brought down directly under the hand of the compositor, which arrangement enables him to set up or distribute from 10 to 25 per cent. more matter in the same length of time than with the old Case. We also manufacture **Hamilton's Patent Cutting Stick** for Paper Cutters, the most economical and convenient article ever offered to the trade. We can sell you Job Presses, Cylinder Presses, Paper Cutters, Etc., at bottom prices.

Send for our Specimen Book of Wood Type and Catalogue of Wood Goods, and for figures on any Machinery that you need.

Factories, TWO RIVERS, WIS.

THE NEW FAST TYPE-PRINTING WEB PERFECTING PRESS
DELIVERS 3,500 TO 4,000 PERFECT PAPERS, FOLDED, PER HOUR



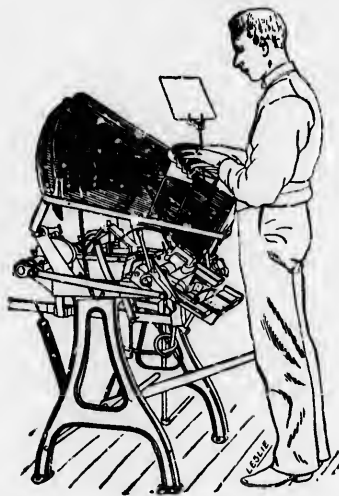
THE NEW GOX DUPLEX PRESS AND FOLDER

This is what has been so long desired—a simple, rapid, TYPE-PRINTING PRESS. It will print, cut, paste and fold, at equal speed, either four, six, or eight page papers. Any good pressman can operate it. Send for descriptive Circulars and Testimonials.

DUPLEX PRINTING PRESS CO.

BATTLE CREEK, - - - - - MICH.

THE
Dominion Typograph Co., Ltd.



(Assembling matrices, in effect setting type.)

MANUFACTURERS OF THE

ROGERS TYPOGRAPH

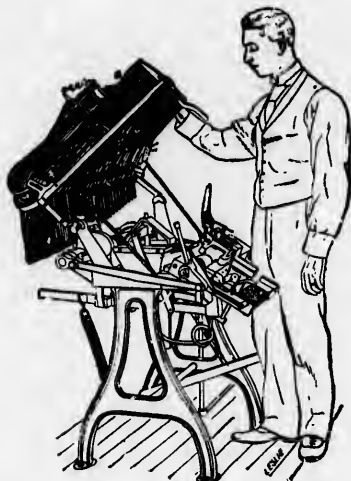
WINDSOR, ONTARIO

This is a sample of our Extended Minion face and can be furnished on any machine from 12 to 16 ems pica. All our faces are arranged on the point system and to the Benton-Waldo standard.

Machines can be ordered with this type on minion or brevier body, as desired.

This is a sample of our Condensed Minion face and can be furnished on any machine from 12 to 16 ems pica. All our faces are arranged on the point system and to the Benton-Waldo standard.

Machines can be ordered with this type on minion or brevier body, as desired.



(Releasing matrices, in effect distributing type.)

This is a sample of our Extended Nonpareil face and can be furnished on any machine from 12 to 16 ems pica. All our faces are arranged on the point system and to the Benton-Waldo standard.

Machines can be ordered with this type on minion or nonpareil body, as desired.

This is a sample of our Condensed Nonpareil face and can be furnished on any machine from 12 to 16 ems pica. All our faces are arranged on the point system and to the Benton-Waldo standard.

Machines can be ordered with this type on minion or nonpareil body, as desired.

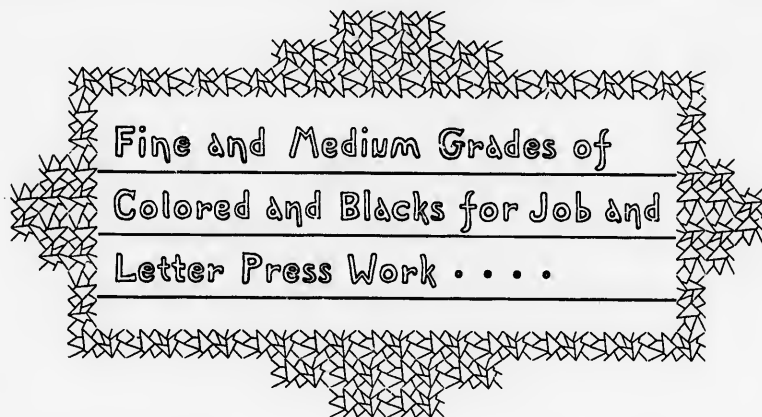
**We are now prepared to furnish Type Faces
as above shown**

* Buffalo Printing Ink Works *

MANUFACTURERS OF

Fine Colored and Black Printing and
Lithographic Inks

ART TONES FOR PHOTO-TONE CUTS A SPECIALTY



ALL GRADES OF CUT, BOOK, JOB, AND NEWS INKS

Duplicates Guaranteed



Send for Specimen Book

BUFFALO PRINTING INK WORKS

20 TO 30 BRACE ST., - - - BUFFALO, N.Y.



HALF-TONE ENGRAVING

DIRECT FROM PHOTOGRAPH

A. ZEESE & CO.

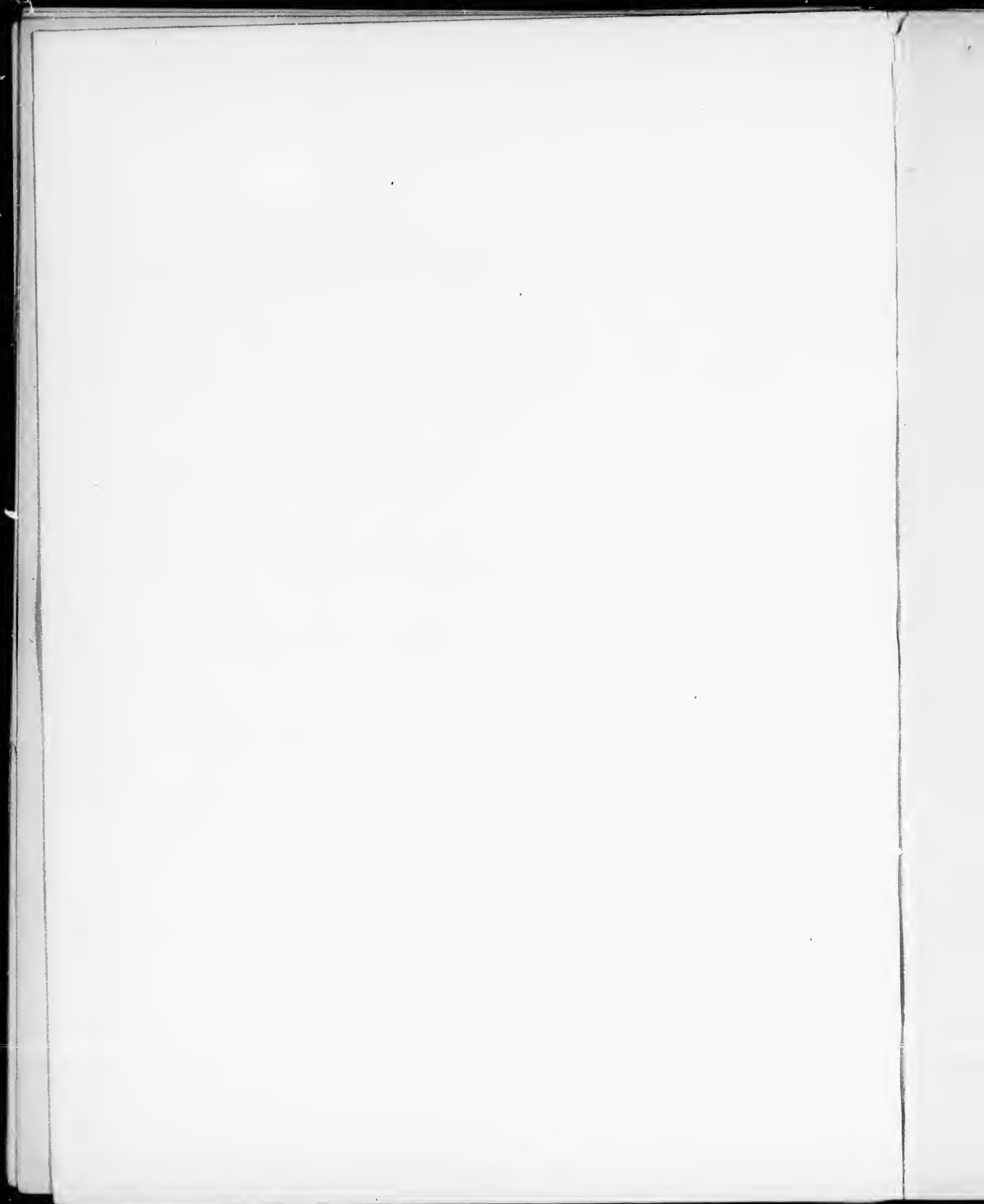
Photo-Process Engravers,

341 DEARBORN STREET, CHICAGO.

CUTS OF EVERY DESCRIPTION

Professly and Neatly Executed.

SEND FOR ESTIMATES AND SAMPLES.



GEO. MATHER'S SONS

MANUFACTURERS OF

BLACK and COLORED PRINTING INKS

VARNISHES, ETC.

Wood-Cut, Book, Job, News, and Extra News Ink

LITHOGRAPHIC INK
PLATE PRINTING INK
PHOTOTYPE INK

HELIOTYPE INK
ARTOTYPE INK
ALBERTYPE INK

LICHTRUCH INK
INDOTYPE INK
PHOTOGRAVURE INK

ESTABLISHED IN 1816 AND IN CONTINUOUS OPERATION TO THIS DATE

60 JOHN STREET, NEW YORK

Estate of S. TALMAGE MATHER

R. N. PERLEE

WE REFER TO THE FOLLOWING ART PUBLICATIONS FOR QUALITY AND
PERMANENCY OF COLOR

Printed with GEO. MATHER'S SONS Fine Wood-Cut Ink

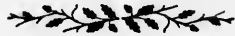
PICTURESQUE AMERICA. D. APPLETON & Co.
PICTURESQUE EUROPE. D. APPLETON & Co.
PICTURESQUE PALESTINE, SINAI AND EGYPT. D. APPLETON & Co.
THE ALDINE. SUTTON & Co.
WORLD OF ART. SUTTON & Co.
ANCIENT MARINER. HARPER & BROS.
PASTORAL D'Y. HARPER & BROS.

THE AMERICAN ART PRINTER. C. E. BARTHOLOMEW & Co.
SCRIBNER'S MAGAZINE
BELFORD'S MAGAZINE
JENNESS-MILLER MAGAZINE
SCIENTIFIC AMERICAN. MUNN & Co.
AMERICAN MAIL AND EXPORT JOURNAL. H. LOCKWOOD
PICTURESQUE CANADA. ART PUBLICATION Co., TORONTO

AS WELL AS MANY PICTORIAL WORKS AND MAGAZINES

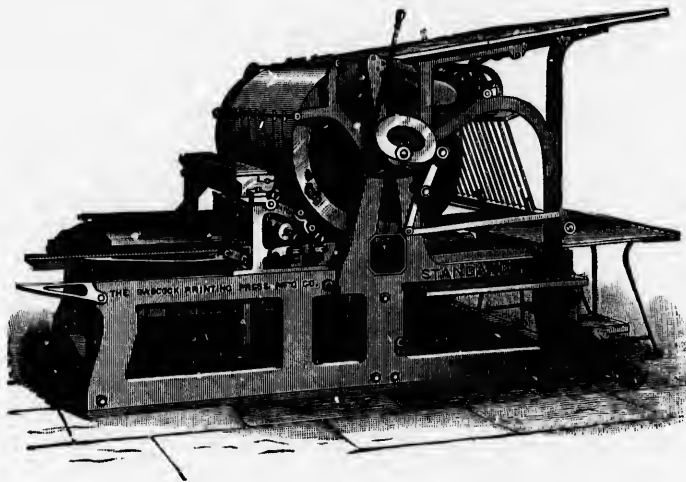
PRICE LIST SENT ON APPLICATION

The Babcock Printing Press M'f'g Co.



MAIN OFFICE AND WORKS

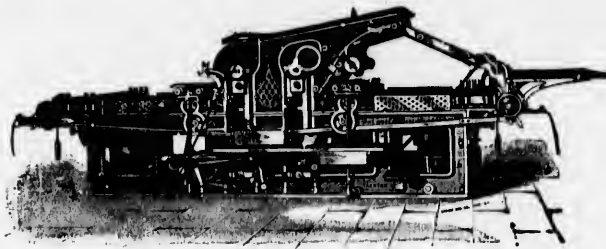
NEW LONDON, = = = CONN.



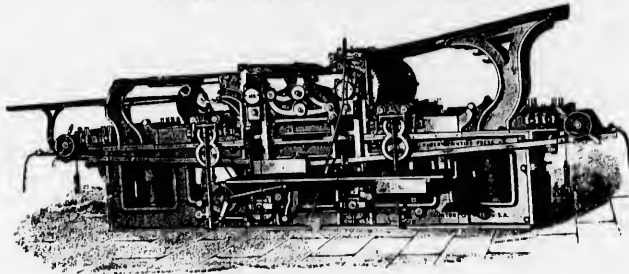
New York Office: 9 and 10 Tribune Building



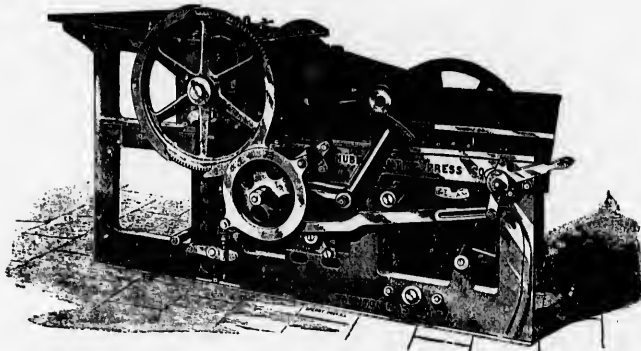
*We manufacture a large variety of
Printing Machinery; and would be pleased
to correspond with, or call upon, anyone wishing
to purchase a Press.*



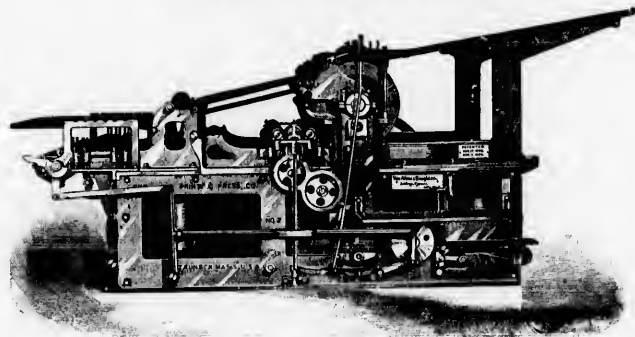
SHEET PERFECTING PRESS



TWO COLOR



"MUSTANG" SUPER ROYAL



TWO REVOLUTION

HUBER = = PRESSES



OVER 300 IN USE



We take care of the offset,
you do the rest.



Send for Circulars
and any information
needed in reference to
Huber Presses



Van Allens & Boughton

59 ANN STREET

AND

17 to 23 Rose Street

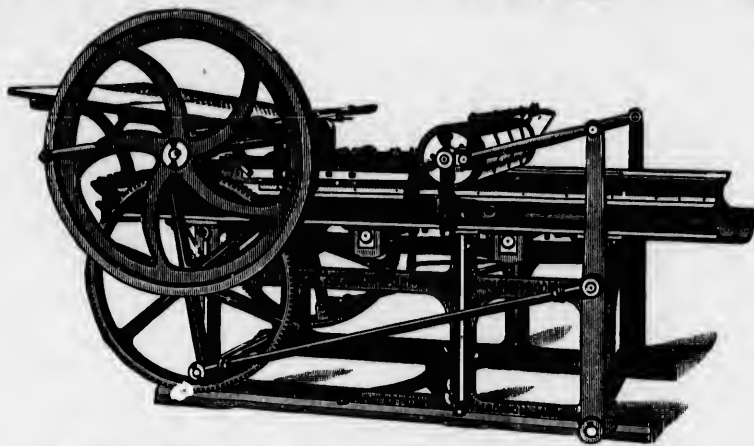
NEW YORK

CHICAGO BRANCH:

301 DEARBORN STREET

H. W. THORNTON, - WESTERN MGR.

The **BEST** Country **PRESS** in the **WORLD** for the **MONEY**



Give us a **CHANCE** and we will **PROVE** this assertion to be

 **TRUE** 

Either write to *H. P. MOORE, of Acton, Ont.*, or go and see his **PROUTY**. He has bought **TWO** off us. See the **BEAUTIFUL** work he does and ask his opinion. He is a **PRINTER** and **KNOWS A GOOD THING**. Ask the other Canadian printers who have bought off us and see what they say; then you will be anxious to write us and see what **YOU** can do for a **PROUTY**.

We propose to sell a few Presses **DELIVERED** at your R. R. Depot, **FREIGHT AND DUTY PREPAID**, at prices that will make you **HAPPY**.

To the **FIRST PRINTER** in Canada who orders of us an **IMPROVED COUNTRY PROUTY POWER PRESS** after this advertisement appears we will send as a **PRESENT** a few fonts of **BEAUTIFUL NEW JOB TYPE**.

To the **FIRST PRINTER** of a country paper in Canada who sends us his name and address and a copy of his last paper *and mentions this ad.*, we will send as a **PRESENT** a Font of New Job Type. We want to see if printers read this Journal.

W. G. WALKER & CO.

SOLE PROPRIETORS

MADISON, WISCONSIN, U.S.A.

D. J. REILLY & CO.

324 AND 326 PEARL STREET

NEW YORK CITY

MANUFACTURERS OF

PRINTERS' ROLLERS * * *

AND

* * ROLLER COMPOSITION



The Leading House in its line in the United
States. Composition manufactured with especial
reference to the Climate of the Dominion of
Canada. All goods warranted.

SEND FOR SAMPLES

PRICES LOW

CORRESPONDENCE SOLICITED

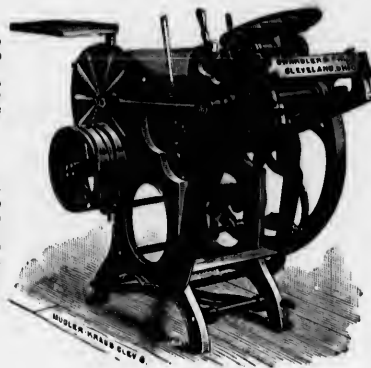
The Chandler & Price Old Style Gordon Press

WITH THROW-OFF AND DEPRESSIBLE GRIPPERS

Eighth Medium, 7 x 11	\$150
Eighth Medium, 8 x 12	165
Quarto Medium, 10 x 15	250
Half Medium, 14 x 20	400
Half Medium, 14½ x 22	450
Steam Fixtures	15

Chandler & Price Fountain, for either size Press \$20
 Buckeye Fountain 10

With each Press there are three Chases, one Brayer, two sets of Roller Stocks, two Wrenches and one Roller Mould. No charge for boxing and shipping.



THE BUCKEYE COMPOSING STICK



6 in. x 2, 2½ or 2¾ in. deep....	\$0 90
8 in. x 2, 2½ or 2¾ in. deep....	1 00
10 in. x 2, 2½ or 2¾ in. deep....	1 20
12 in. x 2, 2½ or 2¾ in. deep....	1 40
14 in. x 2, 2½ or 2¾ in. deep....	1 60
16 in. x 2, 2½ or 2¾ in. deep....	1 80
18 in. x 2, 2½ or 2¾ in. deep....	2 00
20 in. x 2, 2½ or 2¾ in. deep....	2 20

FOR SALE BY DEALERS ONLY. WRITE TO YOUR DEALER FOR PRICES AND TERMS

MANUFACTURED BY
CHANDLER & PRICE

EAST PROSPECT ST. AND C. & P. R. R. CROSSING

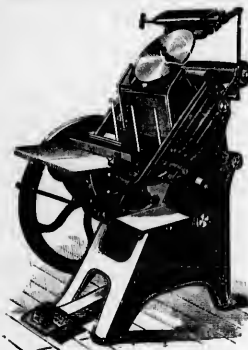
CLEVELAND, O., U. S. A.



We manufacture only the most efficient Electrical Apparatus, including Incandescent or Arc Lighting Dynamos and Lamps, Electric Railway Motors and equipments, Electric Power Generators and Motors, Electric Drills, Fans, Hoists, etc., etc.

The Ball Electric Light Co., Ltd.

TORONTO, ONT.



THE PERFECTED PROUTY PRESS

SWIFTEST, STRONGEST, HEAVIEST, SMOOTHEST RUNNING, MOST DURABLE, EASIEST TO MAKE READY, THOROUGH DISTRIBUTION

THE OPINION OF AN EXPERT

GEO. W. PROUTY & CO., 620 Atlantic Ave.

BOSTON, MASS., May 21st, 1890.

GENTLEMEN:—Within the past three years the writer has had under his charge eight No. 1, seven No. 2, and one No. 4 Perfected Prouty Presses (sixteen in all). I can truly say from that experience that I consider them the BEST job presses made, and the best made job presses. It is THE PRESS which will pay the printer most in "THE LONG RUN." I have had a large experience with other makes of presses, and, in my opinion, none of them come up to the Perfected Prouty as an all-round job press. It can be driven at a higher rate of speed, and with better results, than any other press I have ever seen.

Yours truly,

FRANK W. HAWES,
 Mink Mfg. Co., 119 and 121 Summer St.

SEND FOR DESCRIPTIVE PAMPHLET

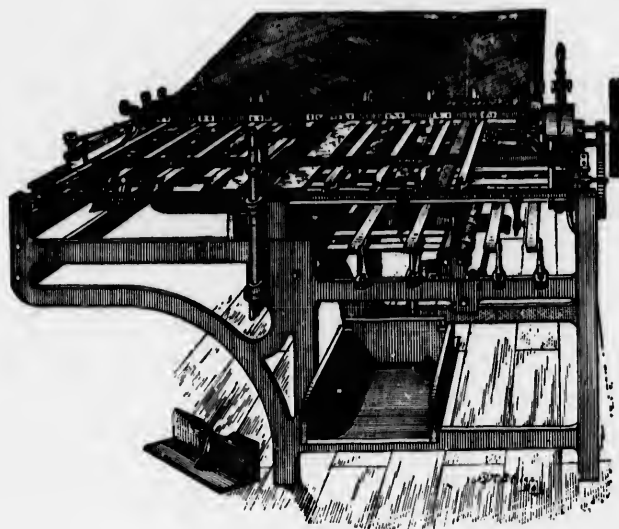
GEO. W. PROUTY & CO.

620 ATLANTIC AVENUE,

BOSTON, MASS.

◆ DEXTER FOLDING MACHINES ◆

ESTABLISHED 1880



We make these Machines for Hand Feed, or for attaching
to any Make or Style of Press

Write for Prices and Descriptive Catalogue

DEXTER FOLDER CO.

SUCCESSORS TO

DEXTER MFG. CO.,

Des Moines, Iowa

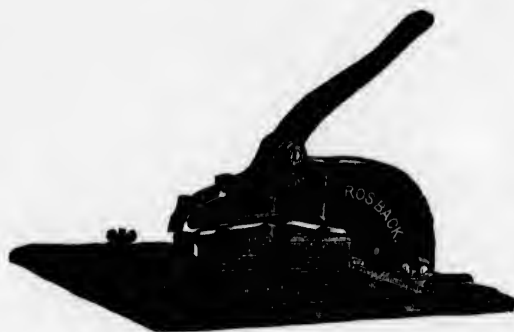
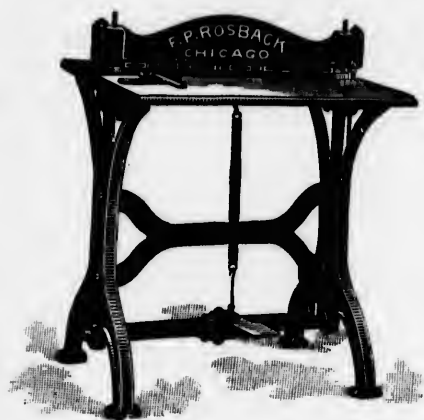
FULTON, N.Y., U.S.A.,

THE IMPROVED ROSBACK PERFORATORS

ARE USED IN ALL

- First-Class Printing Offices and Bookbinderies -

THEY WANT NO OTHERS



"A WORD TO THE WISE IS SUFFICIENT"

If you contemplate buying a Perforator, ask
for a "ROSBACK"



Send for Descriptive Circular and Price List to

F. P. ROSBACK

MANUFACTURER

Successor to **ROSBACK & REED**

39 S. CANAL ST., - - CHICAGO, ILL.



WOOD ENGRAVING, PHOTO-ENGRAVING, IVES (half-tone)
PROCESS ENGRAVING

Bill and Letter Heading, Show Cards and all kinds of Commercial Work. Portraits,
Landscapes, Buildings and Fine Art Engraving. Book, Catalogue,
Magazine and NEWSPAPER ILLUSTRATING.

THE CROSSCUP & WEST ENGRAVING CO.
911 Filbert Street, Philadelphia, Pa.





THE BLACK & CLAWSON CO.'S
IMPROVED PERFORATOR

MADE IN THREE SIZES

20 Inch, 24 Inch and 28 Inch

Descriptive Circular and Prices furnished on application to

THE BLACK & CLAWSON CO.

HAMILTON, OHIO

The Only Practical Stereotype Outfit.

In the manufacture of the late improved outfit I have employed the finest machinery and mechanics obtainable and now GUARANTEE EVERY OUTFIT SOLD AS PERFECT for all practical purposes claimed.

Large numbers of printers are now purchasing the outfit because the COMBINATION OF THE FURNACE AND HOT WATER HOLLOW BED CASTING BOX is a sure preventive against the injury of type in the Mould-Drying operation. Also better results are secured in casting. It is thoroughly endorsed by hundreds.

Send for illustrated descriptive circulars setting forth the claims of various patented devices with a positive warning to the purchaser to beware of unprincipled dealers and infringers, who will be prosecuted to the full extent of the law.

M. J. HUGHES

INVENTOR AND MANUFACTURER

18 Spruce Street, New York, N.Y.

THE PLATE SERVICE

OF THE

* AMERICAN PRESS ASSOCIATION *

Is broad in scope and unrivalled in excellence. It covers every field of newspaper enterprise. There is no legitimate demand which it does not satisfy.

THE A. P. A. IS ABREAST OF THE TIMES

And is continually adding to and improving its service.

Its Writers are accomplished and experienced Journalists of established reputation; its Staff of Artists is complete and excellent.

CANADIAN PUBLISHERS

Will find our service of particular value. Its present utility in the Dominion is hampered by the excessive Tariff. When this impediment is removed we shall offer some extra inducements to our Canadian friends.

Proofs and Particulars on Application.

AMERICAN PRESS ASSOCIATION

36 AND 38 EXCHANGE STREET,

BUFFALO, N.Y.

CENTRAL PRESS AGENCY

10, 12 and 14 Melinda Street, - Toronto

ELECTROTYPERS

STEREOTYPERS

ENGRAVERS ON WOOD AND METAL

PHOTO ETCHERS ON ZINC IN LINE OR HALF-TONE

Ready Set Plates for Newspapers

Draughtsmen

Illustrators



Manufacturers of

Patent Shaved Leads and Slugs

Metal Furniture

QUICK ILLUSTRATIONS

WE USE THE ELECTRIC LIGHT, SO NO DELAY

TELEPHONE 1871

F. DIVER,

MANAGING DIRECTOR

CANADA PAPER CO.

PAPER MAKERS, ENVELOPE MANUFACTURERS

AND

WHOLESALE STATIONERS

Our facilities for making Envelopes are now unsurpassed. We make our own Paper and employ the most modern Envelope Machinery, turning out an excellent Envelope at first cost. Write for Samples and Prices.

CANADA PAPER CO.

DEALERS IN

Printers', Bookbinders' and Boxmakers' Supplies

15 FRONT STREET WEST, - - - TORONTO

ALSO MONTREAL

