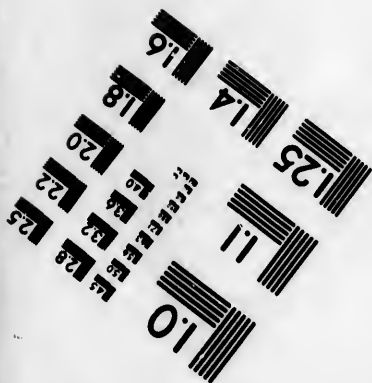
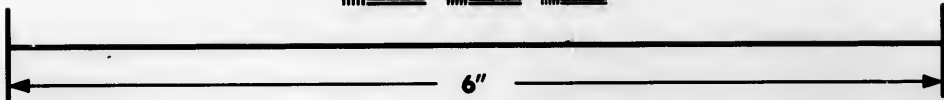
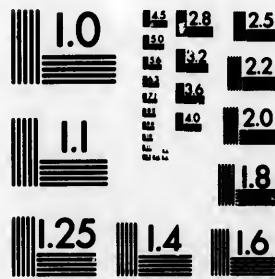


**IMAGE EVALUATION
TEST TARGET (MT-3)**



**Photographic
Sciences
Corporation**

23 WEST MAIN STREET
WEBSTER, N.Y. 14590
(716) 872-4503

**CIHM/ICMH
Microfiche
Series.**

**CIHM/ICMH
Collection de
microfiches.**



Canadian Institute for Historical Microreproductions / Institut canadien de microreproductions historiques

© 1984

Technical and Bibliographic Notes/Notes techniques et bibliographiques

The Institute has attempted to obtain the best original copy available for filming. Features of this copy which may be bibliographically unique, which may alter any of the images in the reproduction, or which may significantly change the usual method of filming, are checked below.

L'Institut a microfilmé le meilleur exemplaire qu'il lui a été possible de se procurer. Les détails de cet exemplaire qui sont peut-être uniques du point de vue bibliographique, qui peuvent modifier une image reproduite, ou qui peuvent exiger une modification dans la méthode normale de filmage sont indiqués ci-dessous.

- | | |
|--|--|
| <input type="checkbox"/> Coloured covers/
Couverture de couleur | <input type="checkbox"/> Coloured pages/
Pages de couleur |
| <input type="checkbox"/> Covers damaged/
Couverture endommagée | <input type="checkbox"/> Pages damaged/
Pages endommagées |
| <input type="checkbox"/> Covers restored and/or laminated/
Couverture restaurée et/ou pelliculée | <input type="checkbox"/> Pages restored and/or laminated/
Pages restaurées et/ou pelliculées |
| <input type="checkbox"/> Cover title missing/
Le titre de couverture manque | <input checked="" type="checkbox"/> Pages discoloured, stained or foxed/
Pages décolorées, tachetées ou piquées |
| <input type="checkbox"/> Coloured maps/
Cartes géographiques en couleur | <input type="checkbox"/> Pages detached/
Pages détachées |
| <input type="checkbox"/> Coloured ink (i.e. other than blue or black)/
Encre de couleur (i.e. autre que bleue ou noire) | <input checked="" type="checkbox"/> Showthrough/
Transparence |
| <input type="checkbox"/> Coloured plates and/or illustrations/
Planches et/ou illustrations en couleur | <input type="checkbox"/> Quality of print varies/
Qualité inégale de l'impression |
| <input type="checkbox"/> Bound with other material/
Relié avec d'autres documents | <input type="checkbox"/> Includes supplementary material/
Comprend du matériel supplémentaire |
| <input type="checkbox"/> Tight binding may cause shadows or distortion
along interior margin/
La reliure serrée peut causer de l'ombre ou de la
distortion le long de la marge intérieure | <input type="checkbox"/> Only edition available/
Seule édition disponible |
| <input type="checkbox"/> Blank leaves added during restoration may
appear within the text. Whenever possible, these
have been omitted from filming/
Il se peut que certaines pages blanches ajoutées
lors d'une restauration apparaissent dans le texte,
mais, lorsque cela était possible, ces pages n'ont
pas été filmées. | <input type="checkbox"/> Pages wholly or partially obscured by errata
slips, tissues, etc., have been refilmed to
ensure the best possible image/
Les pages totalement ou partiellement
obscurcies par un feuillet d'errata, une pelure,
etc., ont été filmées à nouveau de façon à
obtenir la meilleure image possible. |
| <input type="checkbox"/> Additional comments:/
Commentaires supplémentaires: | |

This item is filmed at the reduction ratio checked below/
Ce document est filmé au taux de réduction indiqué ci-dessous.

10X	12X	14X	16X	18X	20X	22X	24X	26X	28X	30X	32X
						✓					

The copy filmed here has been reproduced thanks to the generosity of:

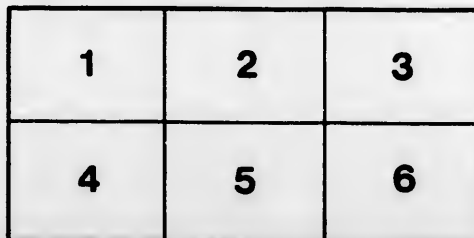
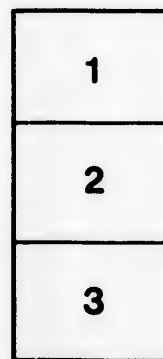
Seminary of Quebec
Library

The images appearing here are the best quality possible considering the condition and legibility of the original copy and in keeping with the filming contract specifications.

Original copies in printed paper covers are filmed beginning with the front cover and ending on the last page with a printed or illustrated impression, or the back cover when appropriate. All other original copies are filmed beginning on the first page with a printed or illustrated impression, and ending on the last page with a printed or illustrated impression.

The last recorded frame on each microfiche shall contain the symbol \rightarrow (meaning "CONTINUED"), or the symbol ∇ (meaning "END"), whichever applies.

Maps, plates, charts, etc., may be filmed at different reduction ratios. Those too large to be entirely included in one exposure are filmed beginning in the upper left hand corner, left to right and top to bottom, as many frames as required. The following diagrams illustrate the method:



L'exemplaire filmé fut reproduit grâce à la générosité de:

Séminaire de Québec
Bibliothèque

Les images suivantes ont été reproduites avec le plus grand soin, compte tenu de la condition et de la netteté de l'exemplaire filmé, et en conformité avec les conditions du contrat de filmage.

Les exemplaires originaux dont la couverture en papier est imprimée sont filmés en commençant par le premier plat et en terminant soit par la dernière page qui comporte une empreinte d'impression ou d'illustration, soit par le second plat, selon le cas. Tous les autres exemplaires originaux sont filmés en commençant par la première page qui comporte une empreinte d'impression ou d'illustration et en terminant par la dernière page qui comporte une telle empreinte.

Un des symboles suivants apparaîtra sur la dernière image de chaque microfiche, selon le cas: le symbole \rightarrow signifie "A SUIVRE", le symbole ∇ signifie "FIN".

Les cartes, planches, tableaux, etc., peuvent être filmés à des taux de réduction différents. Lorsque le document est trop grand pour être reproduit en un seul cliché, il est filmé à partir de l'angle supérieur gauche, de gauche à droite, et de haut en bas, en prenant le nombre d'images nécessaire. Les diagrammes suivants illustrent la méthode.

re
détails
es du
modifier
er une
image

es

errata
to

pelure,
on à

32X

*200 Zoologie Invertebrés nos
N° de l'Inventaire*

LIST

OF

COLEOPTERA

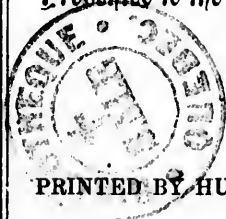
TAKEN AT

QUEBEC AND OTHER PARTS OF LOWER CANADA.

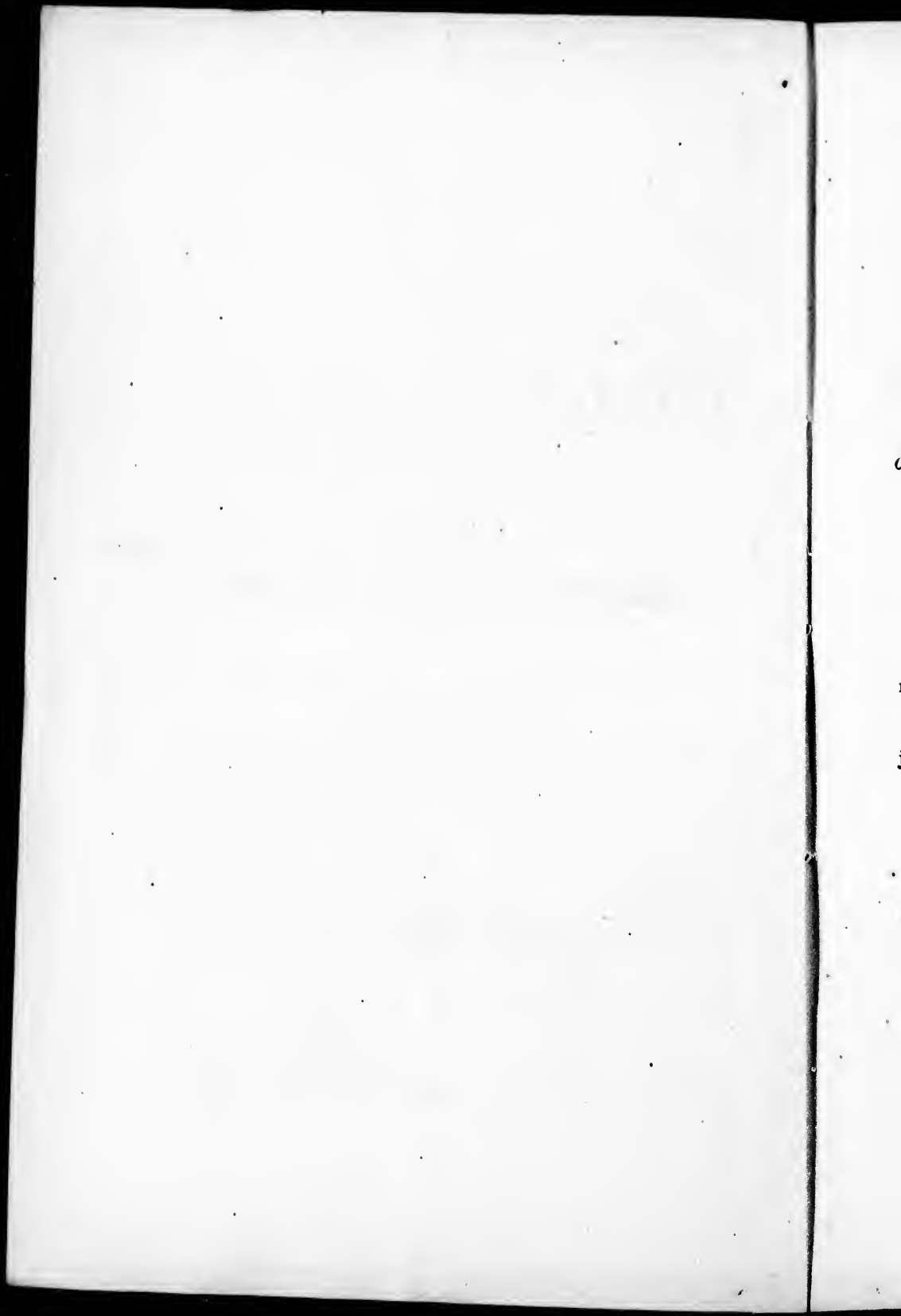
BY WILLIAM COUPER,

CURATOR, QUEBEC BRANCH ENT. SOC. OF CANADA; COR. MEM. ENT. SOC.,
PHILADELPHIA; NAT. HIST. SOC., MONTREAL; ASSIST. SEC.,
LIT. AND HIST. SOC., QUEBEC.

.....
Presented to the Literary and Historical Society, Quebec.
.....



QUEBEC:
PRINTED BY HUNTER, ROSE & CO., ST. URSULE STREET.
1865.



LIST OF
COLEOPTERA

TAKEN AT

QUEBEC AND OTHER PARTS OF LOWER CANADA.

BY WILLIAM COUPER,

Curator, Quebec Branch Ent. Soc. of Canada; Cor. Mem. Ent. Soc., Philad.;
Nat. Hist. Soc., Montreal; Assist. Sec., Lit. & Hist. Soc., Quebec.

[For former Lists, &c., see Transactions of Literary and Historical Society,
Quebec, Now Series, Part II, 1863-4.]

(Presented to the Society, January 18, 1865.)

CICINDELA *Linn.*

repanda Dej. Collected by Mr. A. L. Russell, Quebec.

BLETHISA *Bon.*

julii Lec. Rare. Found under stones, &c., in marshy places near
Quebec. Dr. LeConte lately described it from a
specimen taken in Nova Scotia by Julius Ulke, Esq.,
of Washington, D. C.

NEBRIA *Fabr.*

moesta Lec. Collected at Gaspé by Mr. Denis Gale. It also
occurs at Lake Superior, Saskatchewan river and
Russian America. Lec. *Procecd. Acad. Nat. Sci.*,
Philad., 1860, p. 318.

LEBIA *Latr.*

tricolor Say. Collected at Portneuf *en haut*, by the Rev. Mr.
Provancher. Mr. Krieghoff had a specimen taken at
Lake St. Laurent.

PTEROSTICHUS *Bon.*

luctuosus Dej.; *abjectus Lec.* Beauport. Uncommon. Placed by Mr. LeConte in § *OMASEUS Ziegl.*

AMARA *Bon.*

pygmea Couper, Canadian Naturalist, Vol. II, No. 2, New Series.
subænea Lec. Quebec.

obesa Say. Percosia ob. *Hald.* Quebec.

indistincta. Mann. Quebec.

interstitialis Dej., var. *splendida Hald.* Occurs at Quebec and Fort Simpson, Mackenzie river.

masculus Say. Quebec. The above are now classed by Mr. LeConte under § *CELIA Zimm.*

CHLÆNIUS *Bon.*

**lithophilus Say.* *viridanus Dej.* Banks of Montmorency river.
Rarc.

HAPLOCHILE *Lec.*

pygmea Lec. Quebec. Rarc.

AGONODERUS *Dej.*

pallipes Dej. Quebec. Rarc.

BRADYCELLUS *Er.*

quadricollis Lec. Quebec.

cognatus Schödt. *Acupalpus longiuseculus Mann.* The Quebec specimens are identical with the Russian American form.

HARPALUS *Latr.*

laticeps Lec. Quebec.

PATROBUS *Dej.*

tenuis Lec. Very Rare.

BEMBIDIUM *Latr.*

**inpressum Gyll.*

lucidum Lec. Banks of the Montmorency river.

bimaculatum (Kirby) Portneuf *en bas*.

rupestre (Fabr.)

transversale Dej. § *PERYPHUS* Mey.

patruale Dej.

incrematum Lec. Quebec and Russian America. § *NOTAPHUS* Meg.

simplex Lec.

dilatatum Lec. § *EUDROMUS* Kirby.

versicolor Lec. § *NOTAPHUS* Meg.

AGABUS Leach.

tristis Aubé. Quebec, rare. Russian America.

punctulatus Aubé. Quebec, uncommon.

COPTOTOMUS Say.

interrogatus Aubé.

HYDROBIUS Leach.

tumidus Lec. Quebec. Rare.

GYRINUS Linn.

fraternus Couper, Can. Nat., Vol. II, No. 2, New Series.

HELOPHORUS Fabr.

lacustris Lec. Quebec. Very common.

CATOPS Fabr.

opacus Say. Common.

BOLETOBIUS Leach.

bimaculatus Couper, Can. Nat., Vol. II, No. 2, New Series.

STAPHYLINUS Linn.

**cinnamopterus* Grav. I described this insect on page 80 of the last series of the Lit. and Hist. Soc. Trans. It is the last on the page.

**violaceus* Grav. Also described as No. 2 on the above page.

No. 1 is *S. badipes*, a new species lately described by Dr. LeConte.

NECROPHORUS *Fabr.*

- lunatus* *Lec.* Quebec. Rare.
orbicollis *Say.* *Hallii* *Kirby.* Quebec. Rare. "This species occurs in the N. W. Territory." *Say*, *Jour. Acad. Nat. Sci.*, Philad. 5, p. 178.
confosor *Lec.* Quebec. Very rare. This species also occurs at Lake Superior and Oregon. *N. mortuorum* *Fabr.*, given in my former list, is found in Russian America.

OXYPORUS *Fabr.*

- stygicus* *Say.* Quebec. Uncommon.
vittatus *Grav.* var. *cinctus* *Grav.* Quebec. Rare.

SCAPHIDIUM *Oliv.*

- quadripustulatum* *Say.* Quebec; very rare.
piceum *Mels.* Quebec; very rare.

MYCETOCHARES *Latr.*

- bicolor* *Couper*, *Can. Nat.*, Vol. II, No. 2, New Series.

CISTELA *Fabr.*

- quadristriata* *Couper.* *Can. Nat.*, Vol. II, New Series.

IPS *Fabr.*

- quadrisignatus* *Say.* Quebec. Uncommon.

TRIPLAX *Payk.*

- flavicollis* *Lac.*

EPURAEA *Er.*

- convexiuscula* *Mann.* Quebec and Russian America.

PSEPHENUS *Hald.*

- LeContei* *Hald.* Quebec. Rare.

LIST OF COLEOPTERA.

7

APHODIUS *Ill.*

inquinatus *Fabr.* Quebec. Introduced from Europe.
vittatus *Say.*

DICHELONYCHA *Kirby.*

linearis *Burm.* Collected by Mr. A. L. Russell, Quebec.

DICERCA *Esch.*

lacustris *Lec.* Quebec, very rare.
tuberculata *Fitch.* Quebec. Uncommon.

ANCYLOCHIRA *Esch.*

rusticorum *Lec.* Trans. Am. Philosophical Soc., Nov. 1859, p. 208 ;
Anoplis rusticorum *Kirby*, Fauna Bor. Am. 151.
Quebec, very rare. Collected by Mr. A. L. Russell.
This species is also found in Oregon and California

PÆCILONOTA *Esch.*

cyanipes *Say.* Quebec. Rare.

ANTHRAXIA *Esch.*

subænea *Lec.* Quebec. Rare.

CHRYSOBOTHRIS *Esch.*

trinervia *Kirby.* Quebec. Uncommon.
femorata *Fabr.* Quebec. Race ♂. Uncommon.

AGRILUS *Sol.*

gravis *Lec.* Taken at the Hermitage. Rare.
fulgens *ib.* " " "

DRASTERIUS *Esch.*

dorsalis *Say.* Quebec.

CAMPYLUS *Fischer.*

denticornis *Kirby.*

ATHOUS *Esch.*

affinis *Couper*, Can. Nat. Vol. II, No. 2, New Series.
rufifrons *Lec.*

ibed by

species
Acad.

urs at
Fabr.,
merica.

PITYOBIUS *Lec.*

Billingsii? *Bland*. *Proceed. Ent. Soc. Philad.* Vol. III, p. 60.
 Taken by the Rev. Mr. Hamel at Cap Tourmente. The differences pointed out by Mr. Bland are not sufficient to separate it from *P. anguinus Lec.* This can be verified when a number are placed side by side. I have examined several fine specimens in the cabinet of Dr. LeConte and Mr. Ulke, and compared a specimen taken at Cap Tourmente, but cannot see good grounds for separating them. Dr. LeConte will probably carry me out in this statement.

CORYMBITES *Latr.*

apressifrons Randall. Quebec. Rare.
triundulatus ib. “

TELEPHORUS *Geoff.*

armiger Couper, *Can. Nat.* Vol. II, No. 2, New Series.
scitulus Say.

SILIS? *Charpentier.*

luteicollis Germ.

PODABRUS *Fischer.*

simplex Couper, *Canadian Nat.*, Vol. II, No. 2, New Series.
punctulatus Lec.

DICTYOPTERA *Latr.*

perfaecta Say.

HYLOBIUS *Germ.*

pinicola Couper, *Transactions Lit. and Hist. Soc., Quebec.* New Series, part II, p. 85.

I remarked when the above was published that another of the same size was found in Western Canada, but with marked difference of elytral characters. I had not the western insect to compare with my Quebec specimen. However, I sent the latter to Dr.

LeCoute, who informs me that "it is a good species allied to *H. arcticus* of the other continent." He says "he had it previously from Lake Superior, and it appears as *H. heros* (MS.) in my report on Coleoptera of Lake Superior, in Agassiz's Work."

This insect is therefore *H. heros* of Dr. LeCoute's manuscript, and *H. pinicola* as cited above. However, I now leave it in the hands of the talented author of the Catalogue of N. A. Coleoptera.

CENTRINUS Sch.

scutellum album Say.

POLYDROSUS Sch.

elegans Couper, Can. Nat., Vol. II, New Series.

GRYPIDIUS.

vittatus Couper, Can. Nat. Vol. II, No. 2, New Series.

OTIORHYNCHUS Germ.

sulcatus (Fabr.) Germ. Introduced from Europe.

ASEMUM Serv.

moestum Hald.

SPONDYLUS Fabr.

upiformis Mann. Quebec. Rare.

CALLIDIUM Fabr.

sanguinicollis Horn. Quebec. Uncommon.

TETROPIUM Kirby.

cinnamopterum Kirby. Quebec. Rare.

CLYTUS Fabr.

erythrocephalus Oliv. Quebec. Very rare.

PSENO CERUS Lec.

supernotatus (Say.) Lec.

SAPERDA *Fabr.*

moesta *Lec.* Quebec. Rare.

GAUROTUS *Lec.*

cyanipennis *Say.* Collected by Mr. A. L. Russell.

ACMLEOPS *Lec.*

proteus *Kirby.* Quebec.

TOXOTUS *Serv.*

vittiger *Randall.* Montmorency. June.

LEPTURA *Linn.*

mutabilis *Newman.*

nigrella *Say.*

biforis *Newman.*

DONACIA *Fabr.*

piscatrix *Lac.* Lake St. Joachim. Common.

SYNETA *Esch.*

tripla *Say.*

PHYLLOBROTICA *Dej.*

discoidea *Fabr.* *decorata* *Say.* Quebec. August, on the Mad-dog Scull-cap (*Scutellaria latiflora.*)

HALTICA *Fabr.*

alternata *Ill.* *5-vittata* *Say.* On Willows near the Hermitage.

CRYPTOCEPHALUS *Geoffr.*

formosus *Mels.* Hermitage, June; Gomin woods, July.

CHRYSOMELO (LINA) *Fabr.*

interrupta *Fabr.* var. 5.

scalaris *Lec.* var.

MYSIA *Muls.*

subvittata *Muls.* St. Louis road. Rare.

HYPERASPIS *Redt.*

maculifera (*Muls*) *Lec.* Hermitage. Rare.

MORDELLISTENA *Lec*

fuscipennis *Mels.*

ENDOMYCHUS *Payk.*

biguttatus *Say.*

NACERDES *Steven.*

melanura *Linn.*

ASCLERA *Schm.*

puncticollis *Say.*

SERROPALPUS *Hellerius.*

substriatus *Hald.*

PHLOEOTRYA ? *Lec.*

sericca *Hald.* Seminary Garden, Quebec. Rare.

DITYLUS *Fisch.*

coeruleus *Randall.* Collected by Mr. D. Gale.

SCHIZOTUS *Newm.*

cervicollis *Newman.*

STENOTRACHELUS *Lec.*

arctatus *Say.* St. Foy Road from 20th to 24th September. I found four specimens of this rare insect between the above dates. Its rarity may be attributed to the lateness of its occurrence. Few entomological excursions are made at this season, which may account for its being heretofore overlooked. Dr. LeConte, in a letter says: "I am glad to learn that you have found two more specimens of *S. arctatus*; it is a very interesting insect, and was known to me previous to receiving your specimen, only by fragments which I cut out of a dead tree at Lake Superior. The subsequent reception

of a specimen from Russian America enabled me to establish the synonymy which is as follows:—

Stenotrachelus arctatus *Lec.* Class. Col. North America, 252.
Helops arctatus *Say.* Long's Expedition. St. Peters, 2, 283.
Steno. obscurus *Mann.* Bull. Mosc. 1852, 347."

DACNE *Latr.*

fasciatus *Fabr.* Quebec, under bark, rare. *D. heros* *Say.*, occurs in Upper Canada.

MICRORHOPALA.

interrupta *Couper.* Can. Nat., Vol. II., No. 2, New Series.

