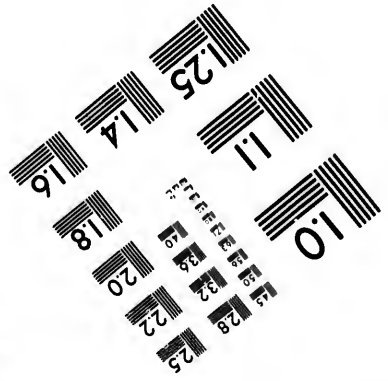
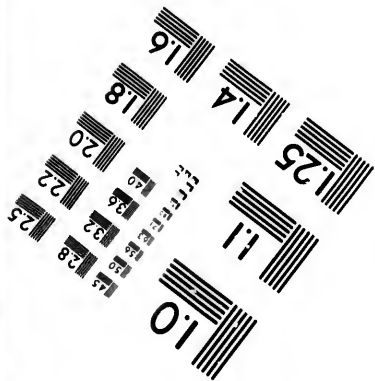
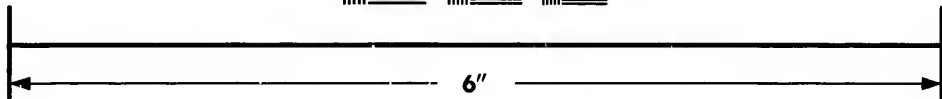
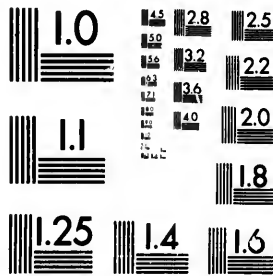


**IMAGE EVALUATION  
TEST TARGET (MT-3)**



**Photographic  
Sciences  
Corporation**

23 WEST MAIN STREET  
WEBSTER, N.Y. 14580  
(716) 872-4503

28 25  
22  
20

**CIHM/ICMH  
Microfiche  
Series.**

**CIHM/ICMH  
Collection de  
microfiches.**



Canadian Institute for Historical Microreproductions / Institut canadien de microreproductions historiques

10

**© 1985**

Technical and Bibliographic Notes/Notes techniques et bibliographiques

The Institute has attempted to obtain the best original copy available for filming. Features of this copy which may be bibliographically unique, which may alter any of the images in the reproduction, or which may significantly change the usual method of filming, are checked below.

L'Institut a microfilmé le meilleur exemplaire qu'il lui a été possible de se procurer. Les détails de cet exemplaire qui sont peut-être uniques du point de vue bibliographique, qui peuvent modifier une image reproduite, ou qui peuvent exiger une modification dans la méthode normale de filmage sont indiqués ci-dessous.

- Coloured covers/  
Couverture de couleur
- Covers damaged/  
Couverture endommagée
- Covers restored and/or laminated/  
Couverture restaurée et/ou pelliculée
- Cover title missing/  
Le titre de couverture manque
- Coloured maps/  
Cartes géographiques en couleur
- Coloured ink (i.e. other than blue or black)/  
Encre de couleur (i.e. autre que bleue ou noire)
- Coloured plates and/or illustrations/  
Planches et/ou illustrations en couleur
- Bound with other material/  
Relié avec d'autres documents
- Tight binding may cause shadows or distortion along interior margin/  
La reliure serrée peut causer de l'ombre ou de la distorsion le long de la marge intérieure
- Blank leaves added during restoration may appear within the text. Whenever possible, these have been omitted from filming/  
Il se peut que certaines pages blanches ajoutées lors d'une restauration apparaissent dans le texte, mais, lorsque cela était possible, ces pages n'ont pas été filmées.
- Additional comments:/  
Commentaires supplémentaires:

- Coloured pages/  
Pages de couleur
- Pages damaged/  
Pages endommagées
- Pages restored and/or laminated/  
Pages restaurées et/ou pelliculées
- Pages discoloured, stained or foxed/  
Pages décolorées, tachetées ou piquées
- Pages detached/  
Pages détachées
- Showthrough/  
Transparence
- Quality of print varies/  
Qualité inégale de l'impression
- Includes supplementary material/  
Comprend du matériel supplémentaire
- Only edition available/  
Seule édition disponible
- Pages wholly or partially obscured by errata slips, tissues, etc., have been refilmed to ensure the best possible image/  
Les pages totalement ou partiellement obscurcies par un feuillet d'errata, une pelure, etc., ont été filmées à nouveau de façon à obtenir la meilleure image possible.

This item is filmed at the reduction ratio checked below/  
Ce document est filmé au taux de réduction indiqué ci-dessous.

10X	12X	14X	16X	18X	20X	22X	24X	26X	28X	30X	32X
			✓								

The copy filmed here has been reproduced thanks to the generosity of:

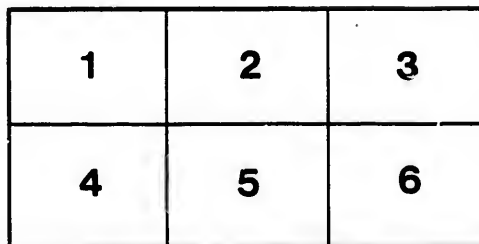
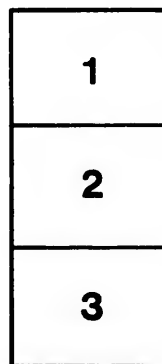
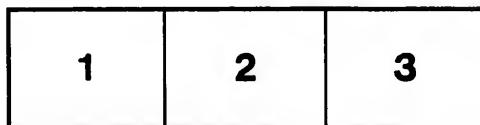
Medical Library  
McGill University  
Montreal

The images appearing here are the best quality possible considering the condition and legibility of the original copy and in keeping with the filming contract specifications.

Original copies in printed paper covers are filmed beginning with the front cover and ending on the last page with a printed or illustrated impression, or the back cover when appropriate. All other original copies are filmed beginning on the first page with a printed or illustrated impression, and ending on the last page with a printed or illustrated impression.

The last recorded frame on each microfiche shall contain the symbol  $\rightarrow$  (meaning "CONTINUED"), or the symbol  $\nabla$  (meaning "END"), whichever applies.

Maps, plates, charts, etc., may be filmed at different reduction ratios. Those too large to be entirely included in one exposure are filmed beginning in the upper left hand corner, left to right and top to bottom, as many frames as required. The following diagrams illustrate the method:



L'exemplaire filmé fut reproduit grâce à la générosité de:

Medical Library  
McGill University  
Montreal

Les images suivantes ont été reproduites avec le plus grand soin, compte tenu de la condition et de la netteté de l'exemplaire filmé, et en conformité avec les conditions du contrat de filmage.

Les exemplaires originaux dont la couverture en papier est imprimée sont filmés en commençant par le premier plat et en terminant soit par la dernière page qui comporte une empreinte d'impression ou d'illustration, soit par le second plat, selon le cas. Tous les autres exemplaires originaux sont filmés en commençant par la première page qui comporte une empreinte d'impression ou d'illustration et en terminant par la dernière page qui comporte une telle empreinte.

Un des symboles suivants apparaîtra sur la dernière image de chaque microfiche, selon le cas: le symbole  $\rightarrow$  signifie "A SUIVRE", le symbole  $\nabla$  signifie "FIN".

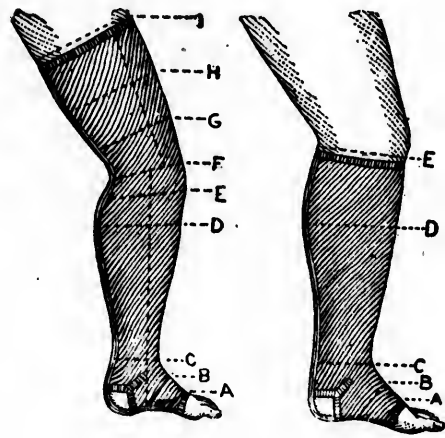
Les cartes, planches, tableaux, etc., peuvent être filmés à des taux de réduction différents. Lorsque le document est trop grand pour être reproduit en un seul cliché, il est filmé à partir de l'angle supérieur gauche, de gauche à droite, et de haut en bas, en prenant le nombre d'images nécessaire. Les diagrammes suivants illustrent la méthode.

# THE OTTAWA TRUSS AND SURGICAL MA

OTTAWA, CA

## MEASURES AND EXPLANATION LETTERS.

- ..... Upper Part of Thigh at top of Crotch.
- H..... Middle of Thigh.
- G..... A little above Knee-Cap.
- F..... Bend of Knee, over Knee-Cap, while standing.
- E..... Garter.
- D..... Largest part of Calf.
- C..... Smallest part of Ankle, just above Joint.
- B..... Instep—Not Heel.
- A..... Ball of Foot.



If a Garter, Stocking on Legging, give Length to E.  
 If above Knee, give Length bottom to F.....  
 F to top .....

Length Measures to be taken on INNER side of Limb always.

**DIRECTIONS FOR**  
 Take the *exact* circumference at points indicated by letters, and g extends above the knee, *always* div is important to locate knee exactly

WE ALLOW FOR COMPRESSION. 

MS

MEASUREMENTS SHOULD BE TAKEN IN THE

Send us by .....

Ottawa Standard Elastic.....

Name.....

Addr.....



# Ottawa Standard

---

We particularly wish to call the attention of the  
the fact that we are making Silk Elastic Hosiery. A  
Elastic Hosiery know how essential it is to have it m  
measurements of the limb. Stock goods are usually  
are made mostly in Europe, and nothing is known of  
quality of the material used. They may last one mor  
made to order of the best quality of heavy rubber and  
a year or longer. There is also a great difference in  
stocking made to order, and stock goods made accor  
measure by the man making them. No two lines of  
from entirely different measurements. The result is  
to the wearer. Stockings made to order cost a trifle  
to the patient and the length of time they last, the  
stock goods.

EVERY STOCKING OF OUR MAKE IS LABELLED “

---

**The Ottawa Truss and Surgical M**

**OTTAWA, CA**

624/2

# Standard Elastic Hosiery.

attention of the Medical Profession and Drug Trade to  
Elastic Hosiery. All who have had experience in the use of  
this is to have it made fresh and new according to correct  
standards are usually made of light rubber and cheap silk ; they  
soon are known of the time they have been made or of the  
day last one month, seldom more than three. A stocking  
made of heavy rubber and stout silk will stand with careful usage  
at a great difference in the benefit derived from a perfectly fitting  
stockings made according to the idea of what the limb should  
be. No two lines of imported goods are made alike ; all are  
made alike. The result is imperfect fitting goods and little benefit  
where they cost a trifle more, but when you consider the benefit  
they last, they are much cheaper than the imported

IS LABELLED "OTTAWA STANDARD."

**Surgical Manufacturing Co., Limited,**  
**OTTAWA, CANADA.**

*Ottawa Standard*

*1902*



