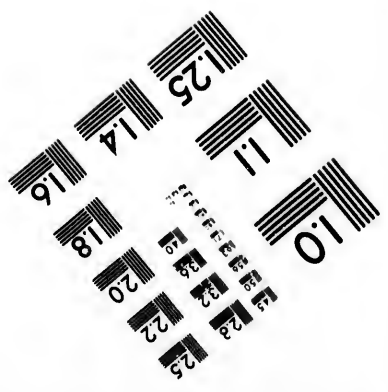
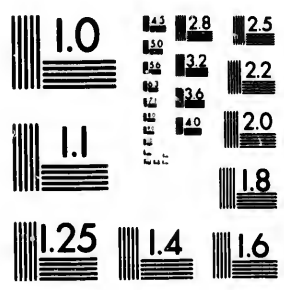


**IMAGE EVALUATION
TEST TARGET (MT-3)**



24 28 25
22 20

**CIHM/ICMH
Microfiche
Series.**

**CIHM/ICMH
Collection de
microfiches.**

10



Canadian Institute for Historical Microreproductions

Institut canadien de microreproductions historiques

1980

Technical and Bibliographic Notes/Notes techniques et bibliographiques

The Institute has attempted to obtain the best original copy available for filming. Features of this copy which may be bibliographically unique, which may alter any of the images in the reproduction, or which may significantly change the usual method of filming, are checked below.

L'Institut a microfilmé le meilleur exemplaire qu'il lui a été possible de se procurer. Les détails de cet exemplaire qui sont peut-être uniques du point de vue bibliographique, qui peuvent modifier une image reproduite, ou qui peuvent exiger une modification dans la méthode normale de filmage sont indiqués ci-dessous.

Coloured covers/
Couverture de couleur

Coloured pages/
Pages de couleur

Covers damaged/
Couverture endommagée

Pages damaged/
Pages endommagées

Covers restored and/or laminated/
Couverture restaurée et/ou pelliculée

Pages restored and/or laminated/
Pages restaurées et/ou pelliculées

Cover title missing/
Le titre de couverture manque

Pages discoloured, stained or foxed/
Pages décolorées, tachetées ou piquées

Coloured maps/
Cartes géographiques en couleur

Pages detached/
Pages détachées

Coloured ink (i.e. other than blue or black)/
Encre de couleur (i.e. autre que bleue ou noire)

Showthrough/
Transparence

Coloured plates and/or illustrations/
Planches et/ou illustrations en couleur

Quality of print varies/
Qualité inégale de l'impression

Bound with other material/
Relié avec d'autres documents

Includes supplementary material/
Comprend du matériel supplémentaire

Tight binding may cause shadows or distortion along interior margin/
La reliure serrée peut causer de l'ombre ou de la distortion le long de la marge intérieure

Only edition available/
Seule édition disponible

Blank leaves added during restoration may appear within the text. Whenever possible, these have been omitted from filming/
Il se peut que certaines pages blanches ajoutées lors d'une restauration apparaissent dans le texte, mais, lorsque cela était possible, ces pages n'ont pas été filmées.

Pages wholly or partially obscured by errata slips, tissues, etc., have been refilmed to ensure the best possible image/
Les pages totalement ou partiellement obscurcies par un feuillet d'errata, une pelure, etc., ont été filmées à nouveau de façon à obtenir la meilleure image possible.

Additional comments:/
Commentaires supplémentaires:

This item is filmed at the reduction ratio checked below/
Ce document est filmé au taux de réduction indiqué ci-dessous.

10X	14X	18X	22X	26X	30X
<input type="checkbox"/>	<input type="checkbox"/>	<input checked="" type="checkbox"/>	<input type="checkbox"/>	<input type="checkbox"/>	<input type="checkbox"/>
12X	16X	20X	24X	28X	32X

The copy filmed here has been reproduced thanks to the generosity of:

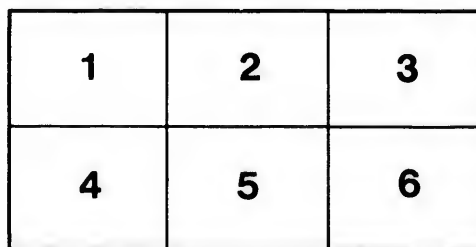
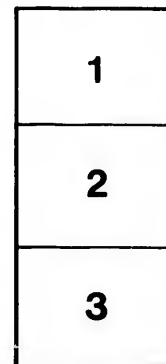
Harold Campbell Vaughan Memorial Library
Acadia University

The images appearing here are the best quality possible considering the condition and legibility of the original copy and in keeping with the filming contract specifications.

Original copies in printed paper covers are filmed beginning with the front cover and ending on the last page with a printed or illustrated impression, or the back cover when appropriate. All other original copies are filmed beginning on the first page with a printed or illustrated impression, and ending on the last page with a printed or illustrated impression.

The last recorded frame on each microfiche shall contain the symbol \rightarrow (meaning "CONTINUED"), or the symbol ∇ (meaning "END"), whichever applies.

Maps, plates, charts, etc., may be filmed at different reduction ratios. Those too large to be entirely included in one exposure are filmed beginning in the upper left hand corner, left to right and top to bottom, as many frames as required. The following diagrams illustrate the method:



L'exemplaire filmé fut reproduit grâce à la générosité de:

Harold Campbell Vaughan Memorial Library
Acadia University

Les images suivantes ont été reproduites avec le plus grand soin, compte tenu de la condition et de la netteté de l'exemplaire filmé, et en conformité avec les conditions du contrat de filmage.

Les exemplaires originaux dont la couverture en papier est imprimée sont filmés en commençant par le premier plat et en terminant soit par la dernière page qui comporte une empreinte d'impression ou d'illustration, soit par le second plat, selon le cas. Tous les autres exemplaires originaux sont filmés en commençant par la première page qui comporte une empreinte d'impression ou d'illustration et en terminant par la dernière page qui comporte une telle empreinte.

Un des symboles suivants apparaîtra sur la dernière image de chaque microfiche, selon le cas: le symbole \rightarrow signifie "A SUIVRE", le symbole ∇ signifie "FIN".

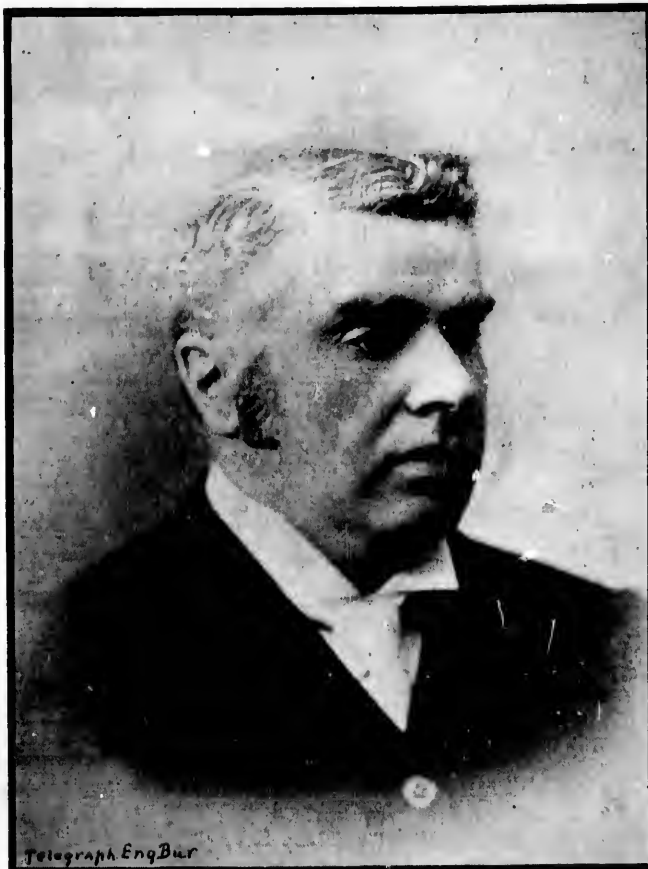
Les cartes, planches, tableaux, etc., peuvent être filmés à des taux de réduction différents. Lorsque le document est trop grand pour être reproduit en un seul cliché, il est filmé à partir de l'angle supérieur gauche, de gauche à droite, et de haut en bas, en prenant le nombre d'images nécessaire. Les diagrammes suivants illustrent la méthode.

errata
to

pelure,
on à



In the Logan collection ^{A 319.1}
B415
A. M. Belding



SIR JOHN THOMPSON,
PREMIER OF CANADA.

Sir John Thompson.

(Died at Windsor Castle on December 12th, 1894; his remains were borne in state to Canada by H. M. S. Blenheim, and were interred on January 3rd, 1895, with national honors, in his native city of Halifax.)

THE darkness came while yet the sun was high,
And dimmed forever that unfaltering eye,
Whose vision pierced the passing clouds of strife,
And marked in honor's paths his way of life.
No dreams of glory dwarfed his loftier aim,
To whom his country's good was more than fame ;
No sheen of gold obscured his clearer view,
Who saw the right, and held the balance true.
His life went out within the storied walls
Of ancient Windsor's animated halls,
Where England's sons for ages o'er the foam
From flood and field have borne their trophies home
To lay at England's feet. Alas ! that one,
The Greater Britain's great and loyal son,
Whose eagle vision swept a wider sky,
Should pass the stately portals but to die.
Fame's laurel wreaths are dust and ashes now,
The seal of Death upon that lofty brow
Proclaims a more imperial sovereignty
Than hers who holds the empire of the sea.
His country mourns—and yet—was fate unkind ?
The onward look of that untrammelled mind

Saw closer drawn the loving ties that hold
These kindred nations in their sacred fold.
Love kindles hearts by kindred sorrow thrilled
—Was not his dream of life in death fulfilled?
When England's empress-mother to her breast,
With soothing words an orphaned maiden pressed,
And kissed the cheek that streamed with hopeless tears,
Not all the statecraft of a thousand years,
With all its mastery of designing arts,
Could strike so deep a chord in loyal hearts.
The solemn tolling of the minster bells
To all the world the tale of sorrow tells;
The funeral pomp, the pageantry of state,
Declare that England mourns the fallen great.
Across the wintry ocean's tossing breast
They bear his body to its final rest,
And ocean's mistress trains her dogs of war
To guard the passage of his funeral car.
His own loved city claims that sacred dust,
But wider realms will share the solemn trust,
That fell unguarded from the nerveless hand
Of one who well had served his native land.
The matchless mind, the heights his genius won,
Shed lustre on the state that calls him son,
—A man who lived in honor, died in fame,
And left on memory's page a stainless name.



