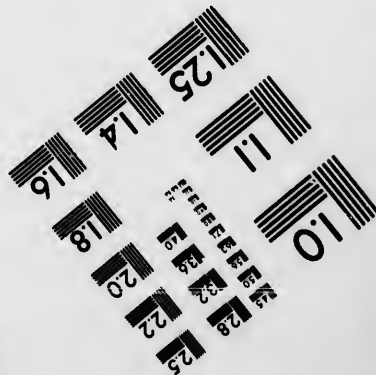
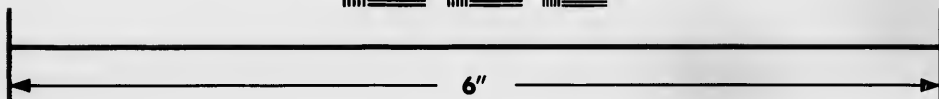
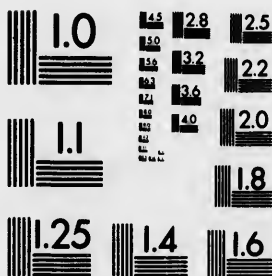


**IMAGE EVALUATION  
TEST TARGET (MT-3)**



**Photographic  
Sciences  
Corporation**

23 WEST MAIN STREET  
WEBSTER, N.Y. 14580  
(716) 872-4503

**CIHM  
Microfiche  
Series  
(Monographs)**

**ICMH  
Collection de  
microfiches  
(monographies)**



**Canadian Institute for Historical Microreproductions / Institut canadien de microreproductions historiques**

**© 1993**

Technical and Bibliographic Notes / Notes techniques et bibliographiques

The Institute has attempted to obtain the best original copy available for filming. Features of this copy which may be bibliographically unique, which may alter any of the images in the reproduction, or which may significantly change the usual method of filming, are checked below.

L'Institut a microfilmé le meilleur exemplaire qu'il lui a été possible de se procurer. Les détails de cet exemplaire qui sont peut-être uniques du point de vue bibliographique, qui peuvent modifier une image reproduite, ou qui peuvent exiger une modification dans la méthode normale de filmage sont indiqués ci-dessous.

Coloured covers/  
Couverture de couleur

Covers damaged/  
Couverture endommagée

Covers restored and/or laminated/  
Couverture restaurée et/ou pelliculée

Cover title missing/  
Le titre de couverture manque

Coloured maps/  
Cartes géographiques en couleur

Coloured ink (i.e. other than blue or black)/  
Encre de couleur (i.e. autre que bleue ou noire)

Coloured plates and/or illustrations/  
Planches et/ou illustrations en couleur

Bound with other material/  
Relié avec d'autres documents

Tight binding may cause shadows or distortion along interior margin/  
La reliure serrée peut causer de l'ombre ou de la distorsion le long de la marge intérieure

Blank leaves added during restoration may appear within the text. Whenever possible, these have been omitted from filming/  
Il se peut que certaines pages blanches ajoutées lors d'une restauration apparaissent dans le texte, mais, lorsque cela était possible, ces pages n'ont pas été filmées.

Additional comments:/  
Commentaires supplémentaires:

Coloured pages/  
Pages de couleur

Pages damaged/  
Pages endommagées

Pages restored and/or laminated/  
Pages restaurées et/ou pelliculées

Pages discoloured, stained or foxed/  
Pages décolorées, tachetées ou piquées

Pages detached/  
Pages détachées

Showthrough/  
Transparence

Quality of print varies/  
Qualité inégale de l'impression

Continuous pagination/  
Pagination continue

Includes index(es)/  
Comprend un (des) index

Title on header taken from:/  
Le titre de l'en-tête provient:

Title page of issue/  
Page de titre de la livraison

Caption of issue/  
Titre de départ de la livraison

Masthead/  
Générique (périodiques) de la livraison

This item is filmed at the reduction ratio checked below/  
Ce document est filmé au taux de réduction indiqué ci-dessous.

10X	12X	14X	16X	18X	20X	22X	24X	26X	28X	30X	32X
<input type="checkbox"/>	<input type="checkbox"/>	<input type="checkbox"/>	<input type="checkbox"/>	<input type="checkbox"/>	<input type="checkbox"/>	<input checked="" type="checkbox"/>	<input type="checkbox"/>	<input type="checkbox"/>	<input type="checkbox"/>	<input type="checkbox"/>	<input type="checkbox"/>

The copy filmed here has been reproduced thanks to the generosity of:

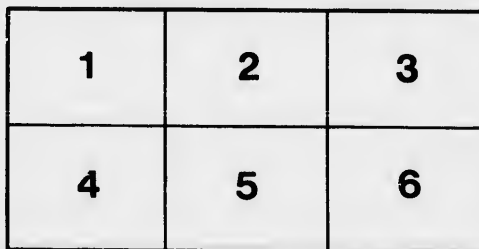
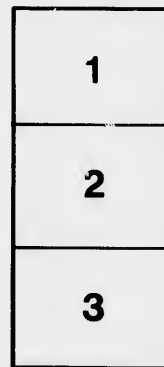
Izaak Walton Killam Memorial Library  
Dalhousie University

The images appearing here are the best quality possible considering the condition and legibility of the original copy and in keeping with the filming contract specifications.

Original copies in printed paper covers are filmed beginning with the front cover and ending on the last page with a printed or illustrated impression, or the back cover when appropriate. All other original copies are filmed beginning on the first page with a printed or illustrated impression, and ending on the last page with a printed or illustrated impression.

The last recorded frame on each microfiche shall contain the symbol  $\rightarrow$  (meaning "CONTINUED"), or the symbol  $\nabla$  (meaning "END"), whichever applies.

Maps, plates, charts, etc., may be filmed at different reduction ratios. Those too large to be entirely included in one exposure are filmed beginning in the upper left hand corner, left to right and top to bottom, as many frames as required. The following diagrams illustrate the method:



L'exemplaire filmé fut reproduit grâce à la générosité de:

Izaak Walton Killam Memorial Library  
Dalhousie University

Les images suivantes ont été reproduites avec le plus grand soin, compte tenu de la condition et de la netteté de l'exemplaire filmé, et en conformité avec les conditions du contrat de filmage.

Les exemplaires originaux dont la couverture en papier est imprimée sont filmés en commençant par le premier plat et en terminant soit par la dernière page qui comporte une empreinte d'impression ou d'illustration, soit par le second plat, selon le cas. Tous les autres exemplaires originaux sont filmés en commençant par la première page qui comporte une empreinte d'impression ou d'illustration et en terminant par la dernière page qui comporte une telle empreinte.

Un des symboles suivants apparaîtra sur la dernière image de chaque microfiche, selon le cas: le symbole  $\rightarrow$  signifie "A SUIVRE", le symbole  $\nabla$  signifie "FIN".

Les cartes, planches, tableaux, etc., peuvent être filmés à des taux de réduction différents. Lorsque le document est trop grand pour être reproduit en un seul cliché, il est filmé à partir de l'angle supérieur gauche, de gauche à droite, et de haut en bas, en prenant le nombre d'images nécessaire. Les diagrammes suivants illustrent la méthode.

DALHOUSIE COLLEGE.

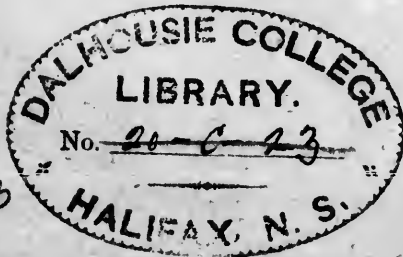
CATALOGUE

OF

.....Zoological Department.....

OF

The Museum.



DAL  
QLT1  
.D14

# 23



CATALOGUE  
OF  
THE ZOOLOGICAL DEPARTMENT  
OF  
Dalhousie university. Museum  
THE MUSEUM  
OF  
DALHOUSIE COLLEGE.

---

PREPARED BY DR. A. <sup>Andrew</sup> HALLIDAY, ✓  
*Lecturer on Zoology.*

---

1900.

---

HALIFAX :  
NOVA SCOTIA PRINTING CO , COR. SACKVILLE AND GRANVILLE STS.  
1900.

NOTE.

---

THIS Catalogue has been prepared in order to enable the students of the Zoology Class to have ready access to such collections in their department of study as the Museum affords. It may, however, serve a second purpose, viz., to draw the attention of the friends of the College to the defects in its equipment for the study of this important subject. The section of Birds, in which the McCulloch collection provides many valuable specimens, is fairly well represented; but no other section is illustrated by more than a few isolated specimens. Blank pages have been left for the manuscript insertion of additions. It is hoped that former students of the Class and friends of the College may help us to fill them at an early date, and that a second edition of the Catalogue, more creditable to the College, may thus be rendered necessary.

We are indebted to the Alumni Association for defraying the expense of printing the Catalogue as well as for funds to provide a few additions to the collections.

A. H.

A  
D  
G



# CATALOGUE.

---

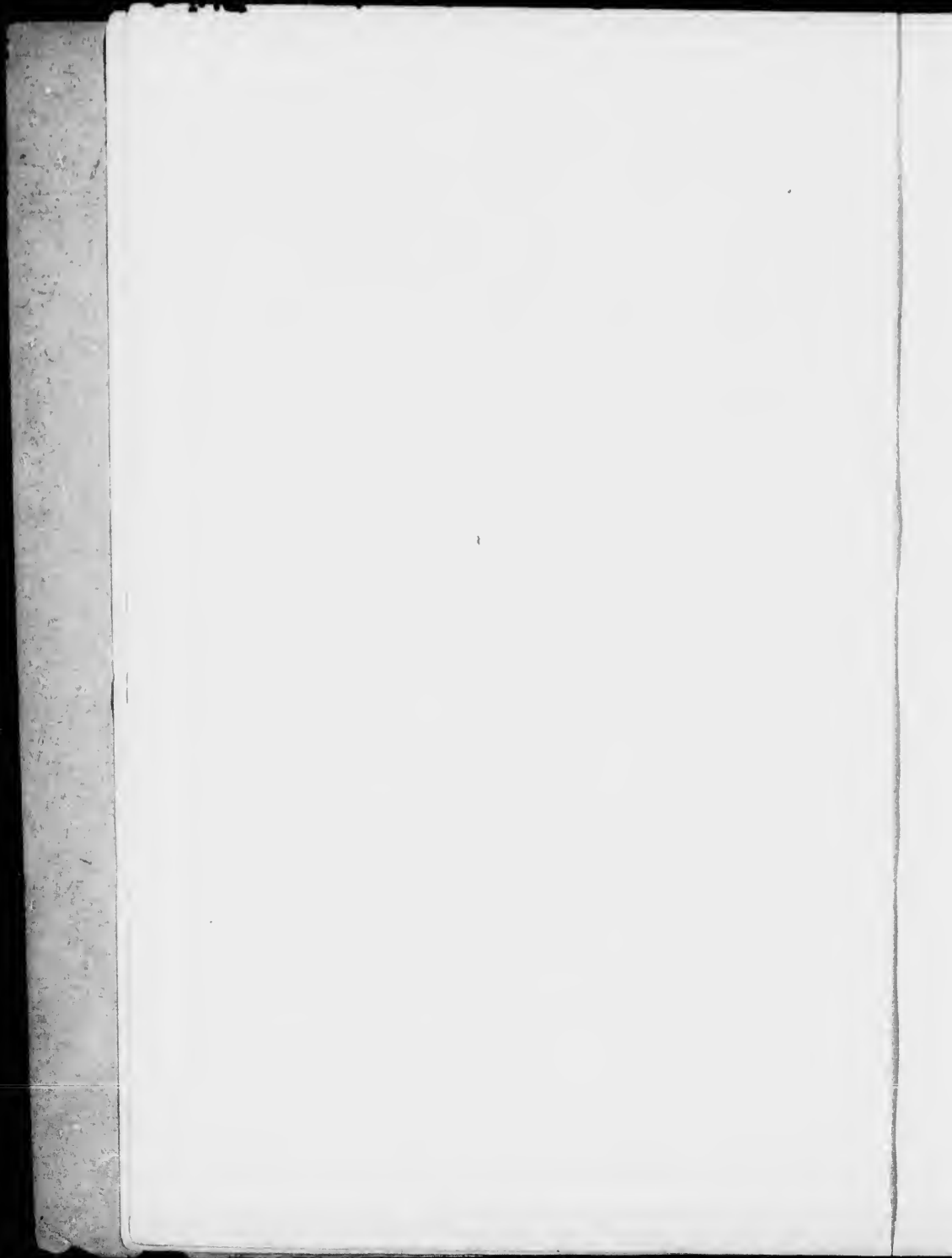
## GROUP I.

- |        |   |
|--------|---|
| No. 1. | Foraminifera from West Indies.                |
| No. 2. | " " " "                                       |
| No. 3. | " " " "                                       |
| No. 4. | " " " "                                       |
| No. 5. | " " Atlantic,—2540 fathoms.                   |
| No. 6. | " " Barbadoes,— <i>Polycystina calcinea</i> . |
| No. 7. | " <i>Polycystina</i> .                        |

able the stu-  
cess to such  
affords. It  
attention of  
ment for the  
in which the  
ens, is fairly  
more than a  
for the manu-  
students of  
fill them at  
atalogue, more  
ecessary.  
lefraying the  
unds to pro-

A. H.

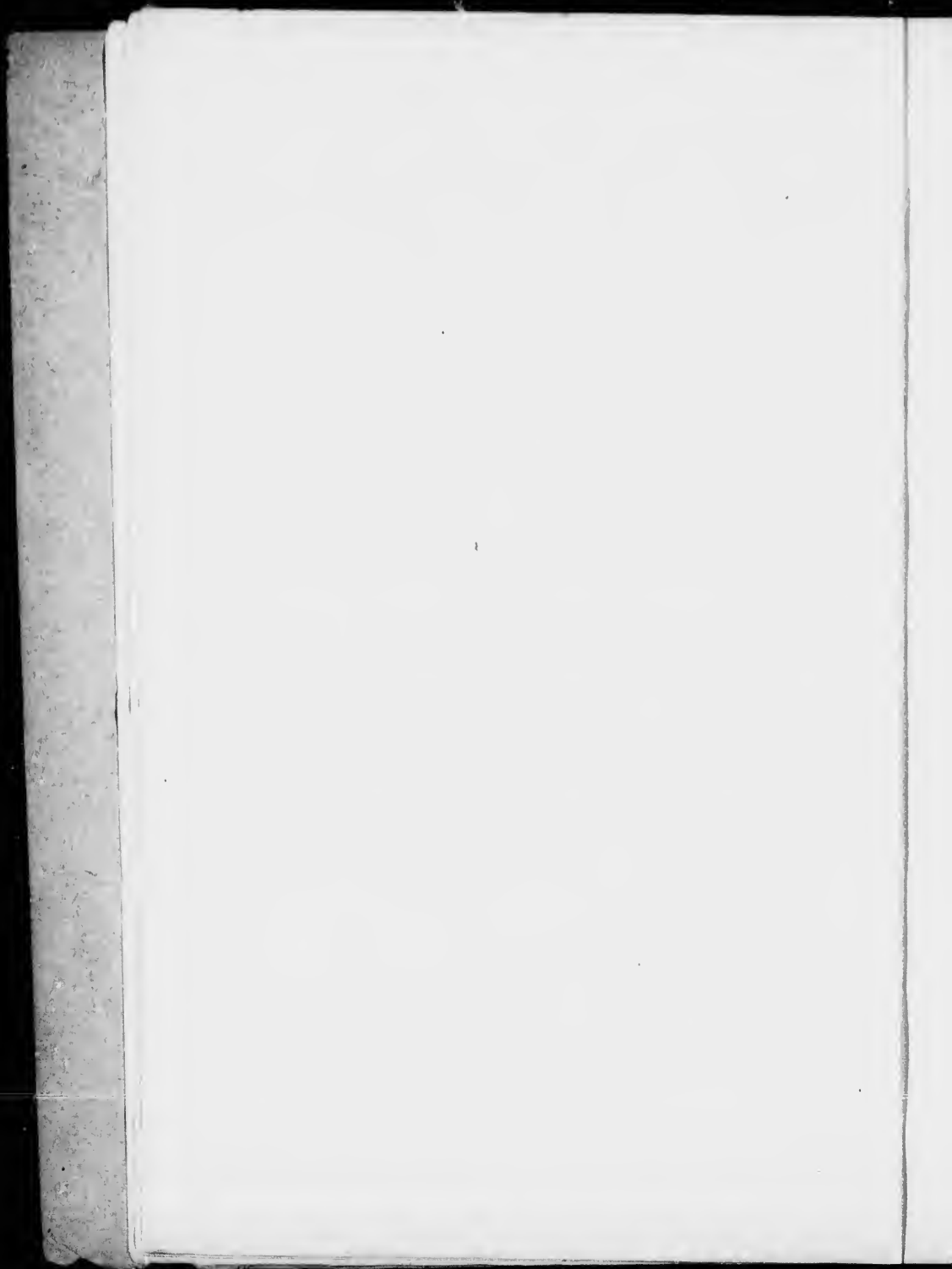
DAV  
DGL  
DIA



**GROUP II.**

No. 1. Porifera.

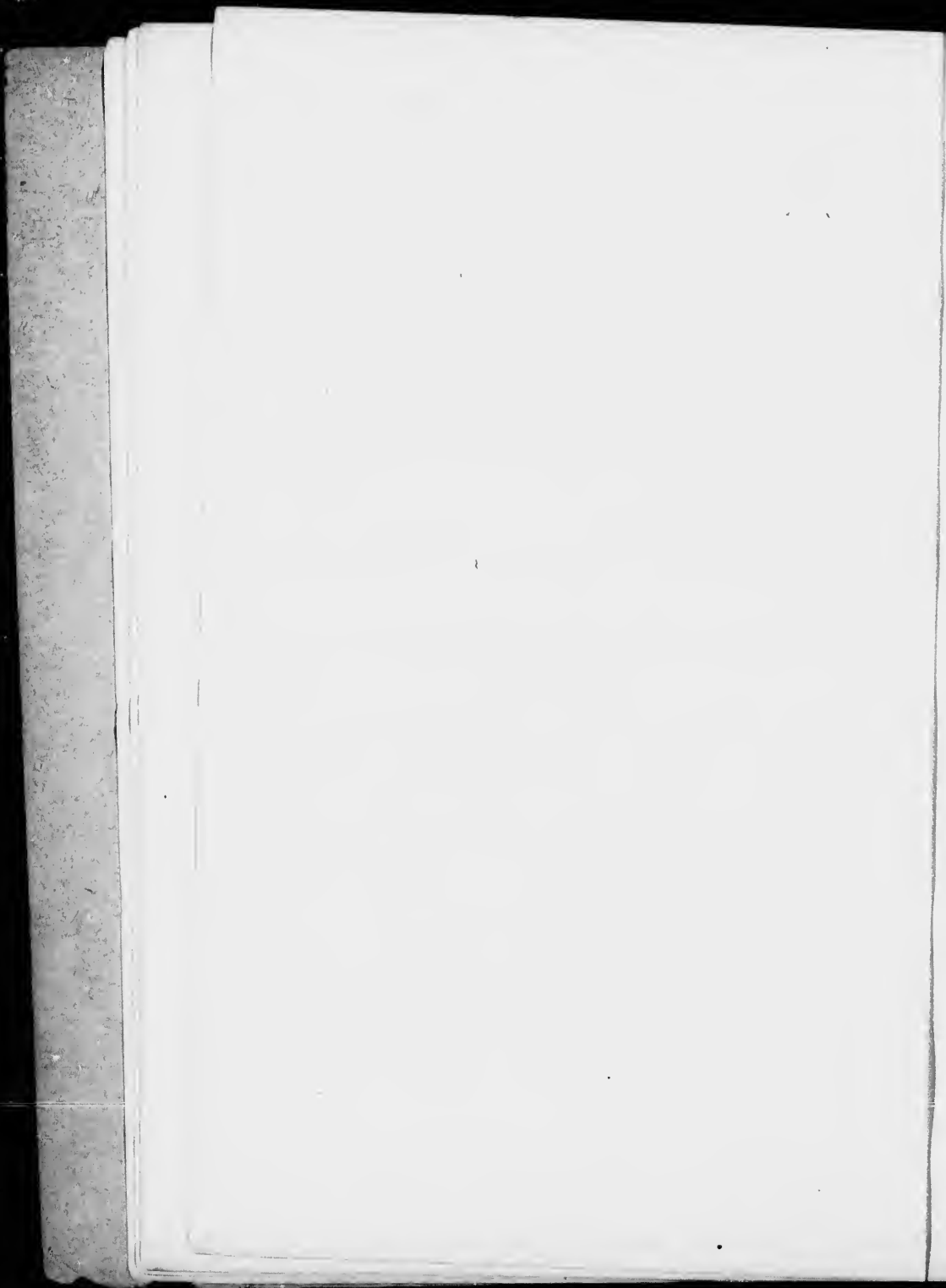
*Order* : Carneospongiae.



**GROUP III.****COELENTERATA.**

- No. 1. Actinia (Sea Anemone).  
*Order* : Zoantharia.  
*Class* : Actinozoa.
- No. 2. Aurelia (Jelly-fish).  
*Order* : Discophora.  
*Class* : Hydrozoa.
- No. 3. Madrepora Verucosa (Coral).  
No. 4. Tubipora Musica (Organ pipe Coral).  
No. 5. Corallium Rubrum.  
No. 6. Oculina.  
No. 7. Meandrina (Brain Corals).  
No. 8. Gorgonia flabellum (Sea-fan).  
No. 9-10. Spicules from Sea-fan.

The Corals belong to the orders Zoantharia and Aleyonaria,  
class Actinozoa.



**GROUP IV.****ECHINODERMATA.**

- No. 1 Echinus Vulgaris (Sea Urchin).  
*Order* : Echinus.  
*Class* : Echinoidea.
- No. 2 Asterias Forbesii (Star-fish).  
*Order* : Asterias.  
*Class* : Asteroidea.





**GROUP V.**

## VERMES.

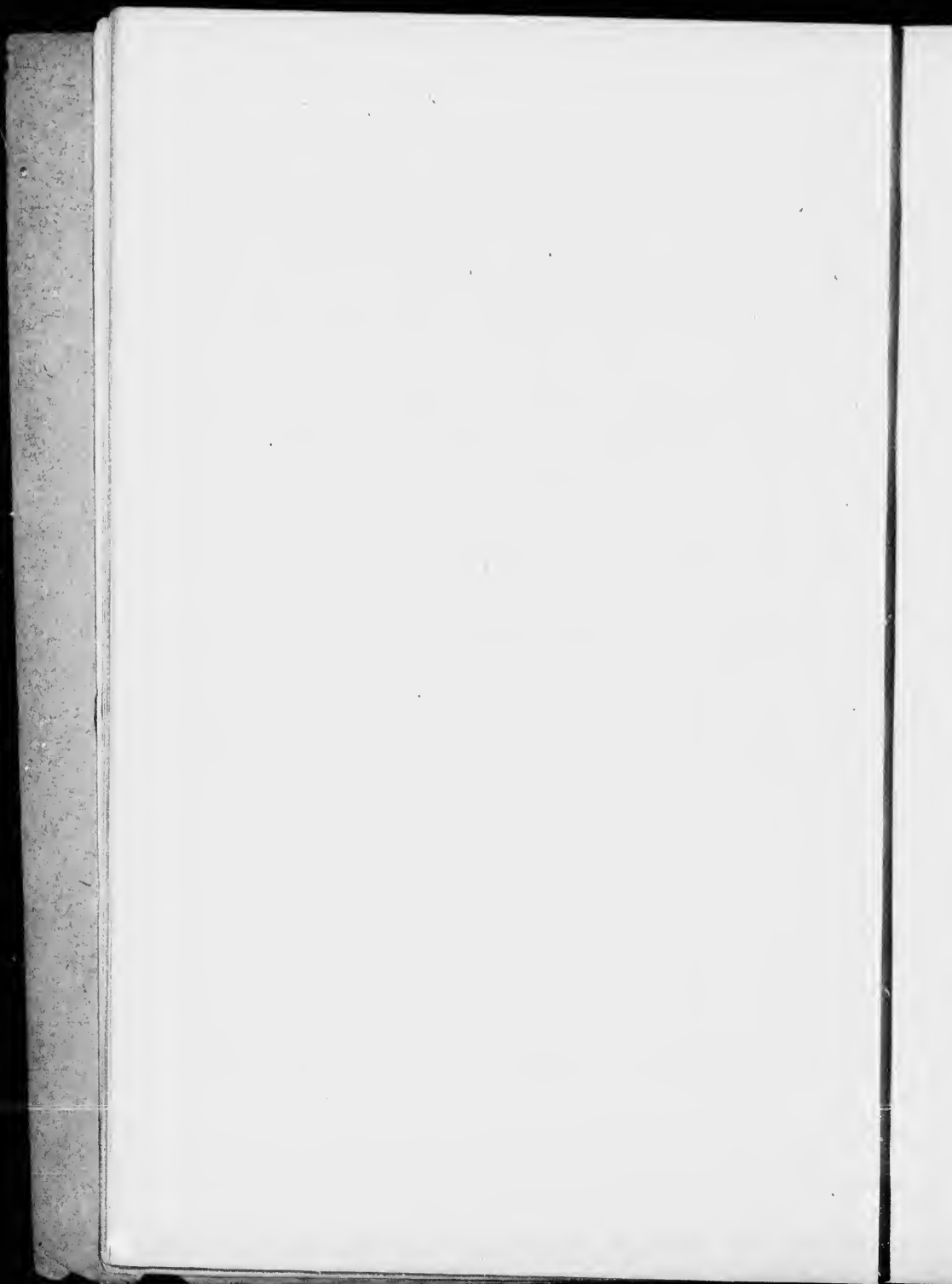
- No. 1. Hirudo (Leech).  
*Order* : Hirudinea.  
*Class* : Annulata.
- No. 2. Tinea Solium (Tape worm).  
*Class* : Cestodes.  
*Order* : Platyhelminthes.
- No. 3. Ascaris Lumbricoides (Round worm).  
*Order* : Nematodes.  
*Class* : Nematelminthes.
- No. 4. Echinorhynchus (Parasite in intestine of fish).  
*Order* : Acanthocephali.  
*Class* : Nematelminthes.



## GROUP VI.

## CRUSTACEA.

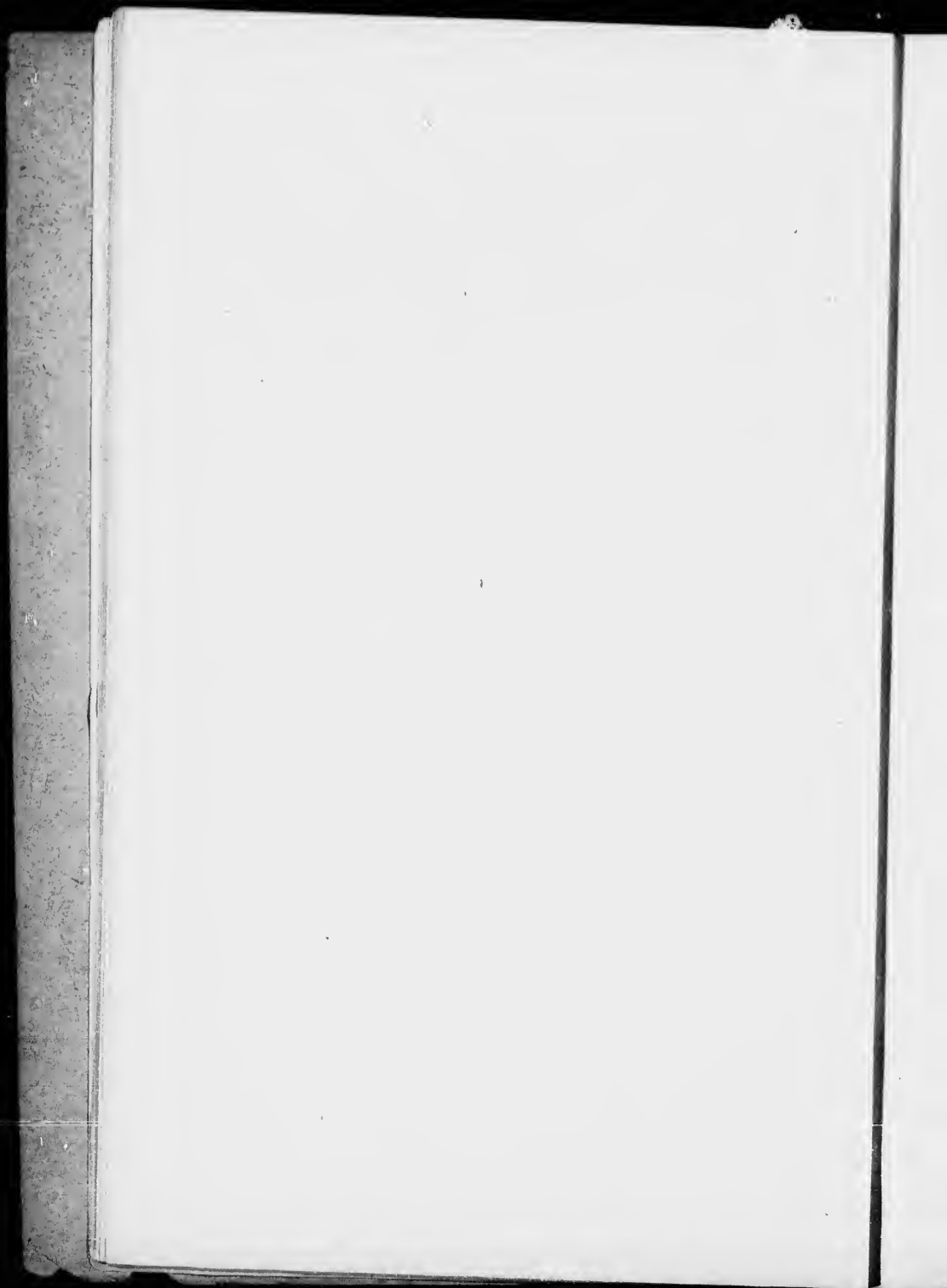
- No. 1. Balanus ("Acorn Shells").  
*Order* : Cirripedia.  
*Class* : Crustacea.
- No. 2. Pagurus (Hermit Crab).  
*Tribe* : Anomura.  
*Sub-order* : Decapoda.  
*Order* : Thoracostraca.  
*Class* : Crustacea.  
This specimen is inhabiting the shell of  
Buccinum undatum (The long whelk).
- No. 3. Cancer (The Common Crab).  
*Tribe* : Brachyura.  
*Sub-order* : Decapoda.  
*Order* : Thoracostraca.
- No. 4. Homarus Americanus.  
*Tribe* : Macrura.  
*Sub order* : Decapoda.  
*Order* : Thoracostraea.
- No. 5. Limulus.  
*Tribe* : Xiphosura.  
*Order* : Merostomata.  
*Sub-class* : Podostomata.



**GROUP VII.**

**MYRIOPODA.**

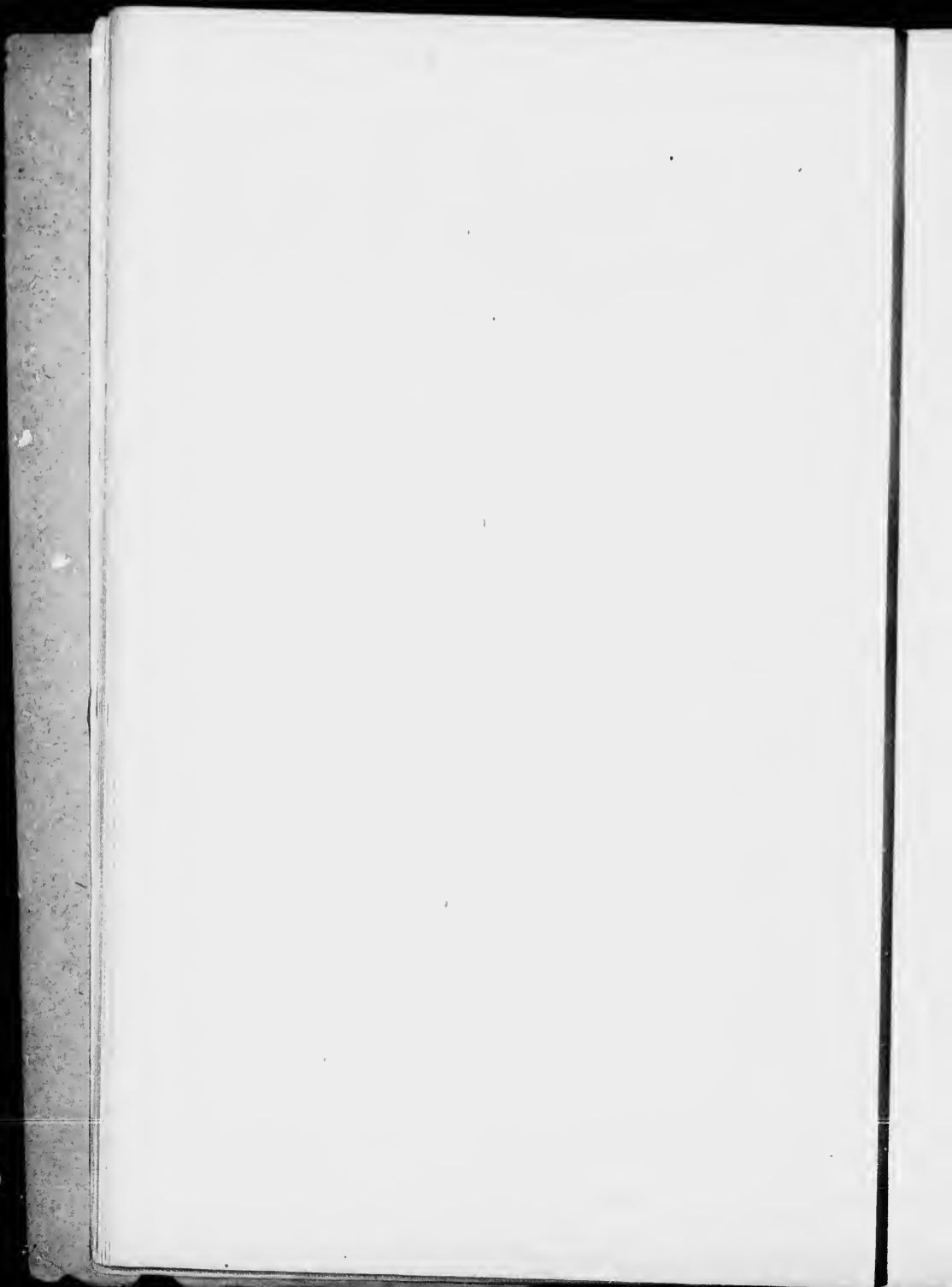
- No. 1. Scolopendra (Centipede).  
*Order* : Chilopoda.  
*Class* : Myriopoda.



**GROUP VIII.**

**ARACHNIDA.**

- No. 1. Scorpio (Scorpions).  
*Order* : Arthrogastra.  
*Class* : Arachnida.





**GROUP IX.****INSECTA.**

- Order 1. Lepidoptera.
- Order 2. Neuroptera.
- Order 3. Orthoptera.
- Order 4. Hymenoptera.
- Order 5. Hemiptera.
- Order 6. Coleoptera.

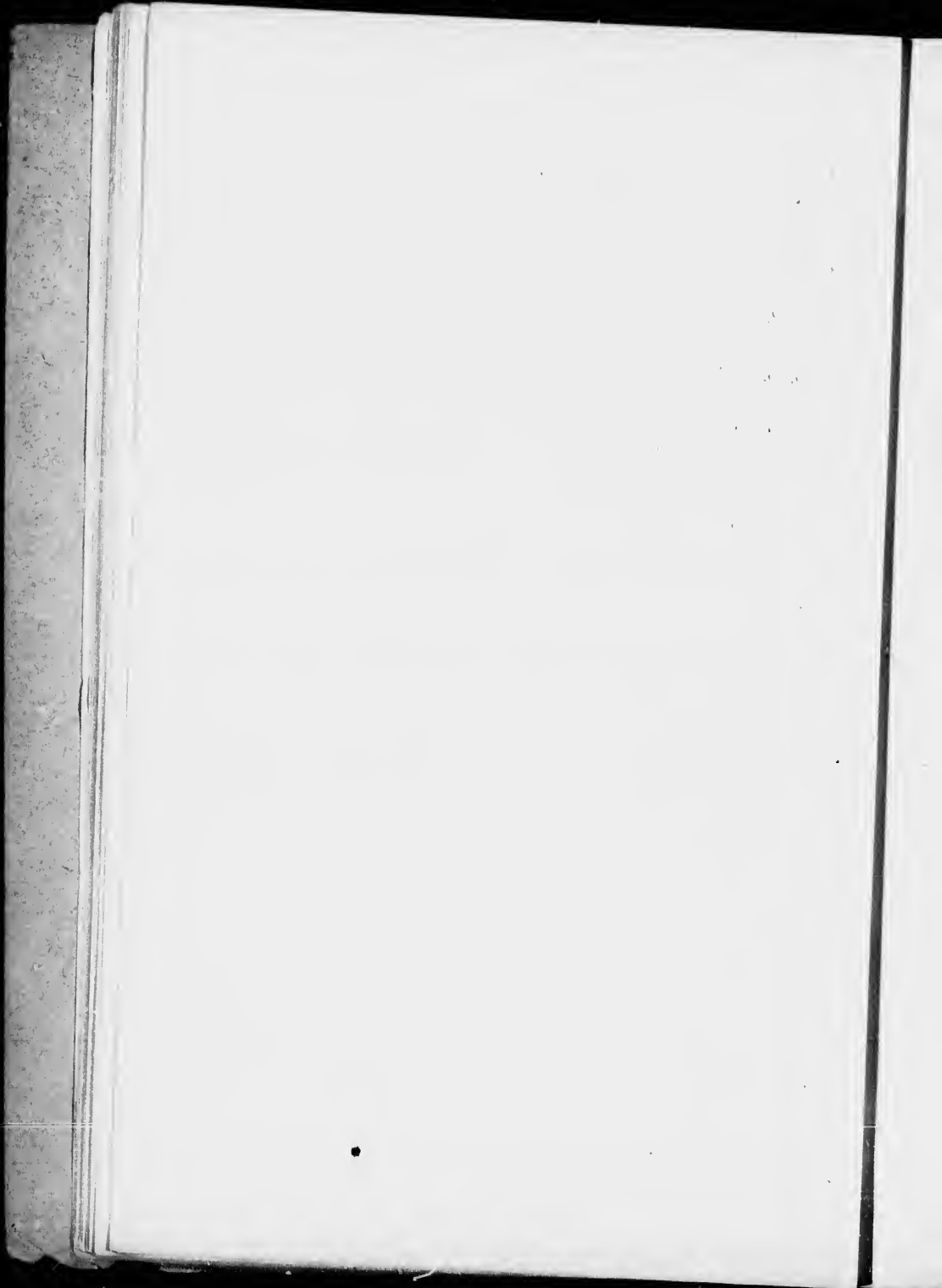
The Insecta are arranged in the various orders but not catalogued.



## GROUP X.

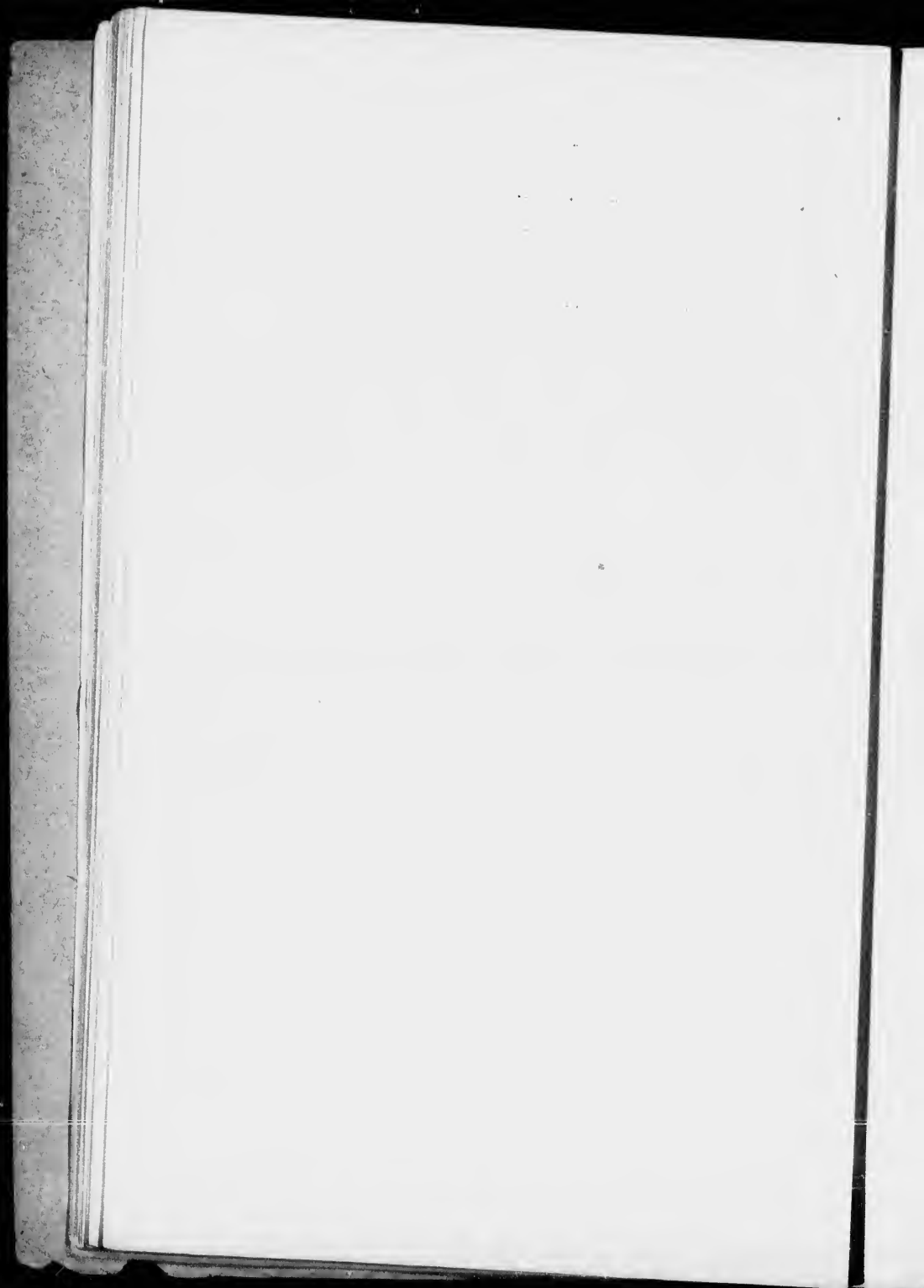
## MOLLUSCA.

- No. 1. *Arenaria* (Clam).  
*Order*: Siphoniata.  
*Class*: Lamellibranchiata.
- No. 2. *Mytilus edulis* (Mussel).  
*Order*: Asiphoniata.  
*Class*: Lamellibranchiata.
- No. 3. *Solen ensis* (Razor-fish).  
*Order*: Siphonia.  
*Class*: Lamellibranchiata.
- No. 4. *Lunatia heros* (Round Whelk).  
*Order*: Gasteropoda.  
*Class*: Cephalophora.
- No. 5. *Buccinum Undatum* (Long Whelk).  
See Group VI. No. 2.
- No. 6. *Loligo Vulgaris* (Squid).  
(Vel *Ommastrephes illecebrosa*).  
*Order*: Dibranchiata.  
*Class*: Cephalopoda.
- No. 7. *Nautilus* (Shell of).  
*Order*: Tetrabranchiata.  
*Order*: Cephalopoda.



**GROUP XI.****TUNICATES.**

- No. 1. *Ascidia* (Sea Squirt).  
*Order* : *Ascidiacea*.  
*Class* : *Urochorda*.



## GROUP XII.

## PISCES.

- No. 1. *Anguilla acutirostris* (Eel).  
*Order* : Apodes.  
*Class* : Pisces.
- No. 2. Dissected *Gasperaux*. Showing alimentary canal  
and pyloric cæca.
- No. 3. Skeleton of a Fish.
- No. 4. *Hippocampus* (Sea horse).  
*Family* : Syngnathidae.  
*Sub-order* : Lophobranchii.  
*Order* : Teleostei.  
*Class* : Pisces.
- No. 5. *Ostracion* (Trunk fish).  
*Tribe* : Ostracionidæ.  
*Sub-order* : Plectognathi.  
*Order* : Teleostei.
- No. 6. *Rhombus* (Flounder).  
*Family* : Pleuronectidæ.  
*Sub-order* : Pleuronectes.  
*Order* : Teleostei.
- No. 7. *Acanthocottus* (Sculpin).  
*Family* : Cottidæ.  
*Order* : Teleostei.
- No. 8. Mermaid's Purse or egg capsule of the Skate.  
*Raja*. *Order* : E'asmobranchii.
- No. 9. Heart of Fish.
- No. 10. Bony plate of Sturgeon (*Acipenser*). *Order* :  
Ganoidei.

1870  
1871  
1872  
1873  
1874  
1875  
1876  
1877  
1878  
1879  
1880  
1881  
1882  
1883  
1884  
1885  
1886  
1887  
1888  
1889  
1890  
1891  
1892  
1893  
1894  
1895  
1896  
1897  
1898  
1899  
1900



## GROUP XIII.

## AMPHIBIA.

- No. 1. *Rana Mugiens* (Skeleton of).  
No. 2—5. This series illustrates the metamorphosis of the  
Anoura from ovum to adult.  
No. 6. *Rana Pipiens* (Leopard frog).  
*Family*: Ranidæ.  
*Order*: Anura (or Salientia).  
*Class*: Amphibia.  
No. 7. *Bufo Lentiginosus*.  
*Family*: Bufonidæ.  
*Order*: Anura vel Salientia.  
*Class*: Amphibia.  
No. 8. *Triton Tæniatus*.  
*Family*: Tritonidæ.  
*Order*: Urodela.  
*Class*: Amphibia.  
No. 9. *Amblystoma Opacum*.  
*Family*: Amblystomatidæ.  
*Order*: Urodela.  
No. 10. *Amblystoma Punctatum* (Spotted Salamander).  
*Family, &c., same as No. 9.*

THE

...

...

...

...

...

...

...

...

...

...

...

**GROUP XIV.****REPTILIA.**

- No. 1. *Thamnophis Sirtalis* (Eutania or Garter Snake).  
*Family*: Colubridæ.  
*Order*: Ophidia.
- No. 2. *Thamnophis Ordinatus*.  
(Family, &c, same as No. 1.)
- No. 3. *Storeria Occipitomaculata*.  
(Family, &c., same as No. 1.)
- No. 4. *Liopeltis Vernalis* (Grass Snake).  
(Family, &c., as above.)
- No. 5. *Chelonia*.  
*Family*:  
*Order*: Testudinata.

To  
2n  
3r

Up  
Ha

Lo

Du

wil  
of  
No

No

## GROUP XV.

## AVES.

In the small room the birds are arranged as follows :

## LARGE CASE.

- Top Shelf,—*Order* : Raptores.  
 2nd Shelf,—(a) *Order* : Raptores.  
                   (b)   "    Passeres.  
 3rd Shelf,—(a) *Order* : Raptores.  
                   (b)   "    Limicolæ.  
                   (c)   "    Columbæ.  
                   (d)   "    Pici.

## SMALL CASE.

*Order* : Herodiones.  
 (Bittern and Herons.)

## MEDIUM CASE.

- Upper and half of Middle Shelves,—  
                   *Order* : Anseres.  
 Half of Middle Shelf,—  
                   (a) *Order* : Pygopodes.  
                   (b)   "    Steganopodes.  
 Lower Shelf,—  
                   (a) *Order* : Longipennes.  
                   (b)   "    Pygopodes,  
                                   (Family : Alcidae.)

In glass case by themselves are a pair of Labrador Ducks,—*Camptolaimus labradorius*—which are now extinct.

On the lower shelf of Wall Case in the large room will be found a specimen of each of the following Orders of Birds:—

- No. 1. *Order* : Pygopodes.  
           *Family* : Columbridæ.  
           *Genus* : *Colymbus*.  
           *Species* : *Hobællii*.  
           *Colymbus Hobællii*. Hobæll's Grebe,  
 No. 2. *Order* : Steganopodes.  
           *Family* : Sulidæ.  
           *Genus* : *Sula*.  
           *Species* : *Bassana*.  
           *Sula Bassana*—The Gannet or Solan Gocse.

- No. 3. *Order*: Herodiones.  
*Family*: Ardeidae.  
*Genus*: Botaurus.  
*Species*: Lentiginosus.  
 Botaurus lentiginosus—The Bittern.
- No. 4. *Order*: Longipennes.  
*Family*: Laridae.  
 (a) *Genus*: Sterna.  
*Species*: Fosterii.  
 Sterna Fosterii—Foster's Tern.  
 (b) *Genus*: Rissa.  
*Species*: Tridactyla.  
 Rissa Tridactyla—Kittiwake Gull.
- No. 5. *Order*: Anseres.  
*Family*: Anatidae.  
*Genus*: Anas.  
*Species*: Obscura.  
 Anas Obscura—Black Duck.
- No. 6. *Order*: Limicolæ.  
*Family*: Scolopacidae.  
 (a) *Genus*: Glottis.  
*Species*: Flavipes.  
 Glottis Flavipes—Yellow Legs.  
 (b) *Genus*: Limosa.  
*Species*: Fedoa.  
 Limosa Fedoa—Marbled Godwit.
- No. 7. *Order*: Gallinæ.  
*Family*: Tetraonidæ.  
*Genus*: Lagopus.  
*Species*: Albus.  
 Lagopus Albus—Willow Ptarmigan.
- No. 8. *Order*: Raptores.  
*Sub-order*: Falcones.  
*Genus*: Astur.  
*Species*: Atricapillus.  
 Astur Atricapillus—Goshawk.
- No. 9. *Order*: Columbæ.  
*Family*: Columbidae.  
*Genus*: Ectopistes.  
*Species*: Migratorius.  
 Ectopistes Migratorius—Passenger Pigeon.
- No. 10. *Order*: Coccyges.  
*Family*: Cuculidæ.  
 (a) *Genus*: Coccyzus.  
*Species*: Erythrophthalmus.  
 Coccyzus Erythrophthalmus—Black-billed Cuckoo.

- (b) *Genus*: Ceryle.  
*Species*: Aleyon.  
 Ceryle Aleyon—Belted Kingfisher.
- No. 11. *Order*: Macrochires.  
*Family*: Caprimulgidae.  
*Genus*: Chordeiles.  
*Species*: Popetue.  
 Chordeiles Popetue—Night-hawk.
- No. 12. *Order*: Pici.  
*Family*: Picidae.  
*Genus*: Colaptes.  
*Species*: Auratus.  
 Colaptes Auratus—Golden-winged Woodpecker.
- No. 13. *Order*: Turbinares.  
*Family*: Procellariidae.  
*Genus*: Procellaria.  
*Species*: Pelagica.  
 Procellaria Pelagica—Mother Carey's Chicken.  
 (Stormy Petrel.)
- No. 14. *Order*: Passeres.  
*Family*: Fringillidae.  
*Genus*: Habia.  
*Species*: Ludovicana.  
 Habia Ludovicana—Grosbeak.

The Cases in the large hall contain the following:—

- Case 1. *Order*: RAPTORES.  
 Haliaetus Leucocephalus. (Bald Eagle.)
- Case 2. *Order*: PASSERES.  
 No. 1, 2, Corvus Corax Principalis.  
 3, 4, Corvus Americanus.
- Case 3. *Order*: RAPTORES.  
 No. 1, 2, Buteo Borealis—Red tailed Buzzard.  
 3, 4, 7, 8, Aesalon Columbarius—Pigeon Hawk.  
 5, 6, Falco Spaverius—Sparrow-hawk.  
 9, 10, Pandion haliaetus—Osprey or Fish-hawk.
- Case 4. *Order*: RAPTORES.  
 No. 1, 2, Buteo Lineatus—Red-shouldered Hawk.  
 3, 4, Buteo Latissimus—Broad-winged Hawk.  
 5, 6, Circus Hudsonicus—Marsh Harrier.

- Case 5. *Order: RAPTORES.*
- No. 1, 2. *Astur atricapillus*—American Goshawk.  
 3. " " young.  
 4. *Astur striatulus*—Western Goshawk.  
 5. *Hypotrichiarchus columbarius*—Merlin.  
 6, 7. *Falco columbarius*—American Merlin.
- Case 6. *Order: RAPTORES.*
- No. 1, 2. *Bubo virginianus*—Great horned Owl.  
 3. " " " " (young).  
 4, 5. *Bubo subarcticus*—Western horned Owl.  
 6, 7. *Bubo brachyotis*—Short-eared Owl.
- Case 7. *Order: LEMICOLE.*
- No. 1, 2. *Lemosa fedoa*—Marbled Godnit.  
 3, 4. *Glottis melanoleucis*—Greater Yellow Legs.  
 5, 6. *Glottis flavipes*—Lesser Yellow Legs.  
 7.  
 8.  
 9, 10. *Numenius hudsonicus*—Hudsonian Curlew.  
 11, 12. " *longirostris*—Long-billed Curlew.  
 13, 14. *Charadrius squatarola*—Black-billed Plover.  
 15, 16. *Charadrius dominicus*—Golden Plover.  
 17, 18. *Arenaria interpres*—Turnstone.  
 19, 20. *Ægialitis semipalmata*—Ring-neck Plover.
- Case 8. *Order: GALLINÆ.*
- No. 1, 2. *Tetrao umbellus*—Ruffed Grouse.  
 3, 4. *Tetrao canadensis*—Canada Grouse.  
 5, 6. *Tetrao cupida*—Pinnated Grouse.  
 7, 8. *Tetrao phasianellus*—Sharp-tail Grouse.  
 9, 10. *Lagopus albus*—Willow Grouse.  
 11, 12. *Lagopus rupestris*—Ptarmigan.  
 13, 14. *Tetrao obscurus*—Dusky Grouse.
- Case 9. *Order: ANSERES.*
- No. 1, 2. *Branta canadensis*—Canada Goose.  
 3, 4. *Branta bernicla*—Brant Goose.
- Case 10. *Order: PYGPODES.*
- No. 1. *Urinator imber*—Loon.  
 2, 3. *Urinator lumme*—Red throated Loon.  
 4. " " " " (young).  
 5, 6. *Colymbus hobbælli*—Red necked Grebe.  
 7—9. *Colymbus auritus*—Horned Grebe.



## Case 11.

*Order* : PYGOPODES.*Sub-Order* : Podicipedes.No. 1, 2. *Podilymbus Podiceps*—Red-billed Grebe.*Sub-Order* : Cepphi.

- 3-5. *Urinator Imber*—Great Northern Diver.  
 6, 7. *Fratercula Arctica*—Common Puffin.  
 8, 9. *Cepphus Grylle*—Black Guillemot.  
 10, 11. *Uria Troile*—Murre.  
 12, 13. *Alle Alle*—Little Auk or Dovekie.

## Case 12.

*Order* : LONGIPENNES.

- No. 1, 2. *Larus Marinus*—Great black backed Gull.  
 3. " " " " (young).  
 4. " " " " (young in nest)  
 5, 6. *Larus Argentatus*—Herring Gull.  
 7. " " " " (young).

## Case 13.

*Order* : STEGANOPODES.

- No. 1, 2. *Sula Bassana*—Gannet.  
 3. " " " " (young).  
 4, 5. *Phalacrocorax Carbo*—Cormorant.

## Case 14.

*Order* : RAPTORES.*SubOrder* : Striges.

- No. 1, 2. *Syrnium Nebulosum*—Barred Owl.  
 3, 4. *Nyctala Acadica*—Acadian Owl.  
 5, 6. *Nyctala Nyctea*—Snowy Owl.  
 7.  
 8.

## Case 15.

*Order* : HERODIONES.

- No. 1, 2. *Botaurus Lentiginosus*—American Bittern.  
 3, 4. *Ardea Herodias*—Great blue Heron.  
 5. " " " " " (young.)

*Order* : PALUDICOLÆ.

- No. 6, 7. *Gallinula Galeata*—Florida gallinule.  
 14, 15. *Porzana Carolina*—Sora Rail.  
 8, 9. *Fulica Americana*—American Coot.

*Order* : LIMICOLÆ.

- No. 10, 11. *Philohela Minor*—American Woodcock.  
 12, 13. *Gallinago Delicata*—Wilson's Snipe.

## Case 16.

*Order* : ANSERES.

- No. 1, 2. Merganser Americanus—American Merganser.  
 3, 4. Merganser Serrator—Redbreasted Merganser.  
 5, 6. Lophodytes Cucullatus—Hooded Merganser.  
 7, 8. Aythya Americana—Red-headed Duck.  
 9, 10. Aythya Vallisneria—Canvas-back Duck.  
 11, 12. Anas Obscura—Dusky Duck.

## Case 17.

*Order* : ANSERES.

- No. 1, 2. Anas Boschas—Mallard Duck.  
 3, 4. Anas Americanus—American Widgeon.  
 5, 6. Anas Carolinensis—Green Winged Teal.  
 7, 8. Anas Discors—Blue Winged.  
 9, 10. Spatula Clypeata—Shoveller Ducks.  
 11, 12. Dafila Acuta—Pintail Duck.  
 13, 14. Aix Sponsa—Wood Duck.

## Case 18.

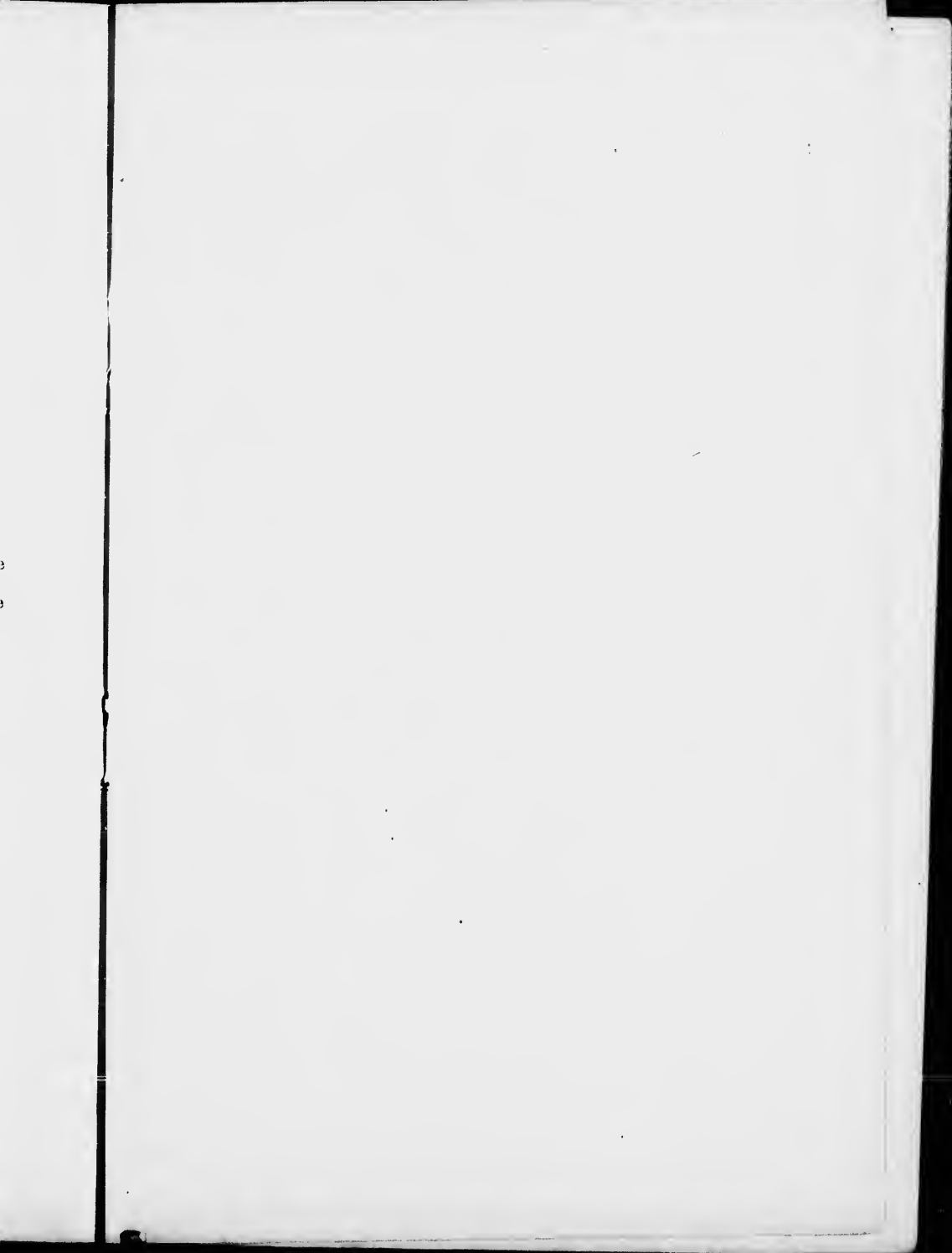
*Order* : ANSERES.

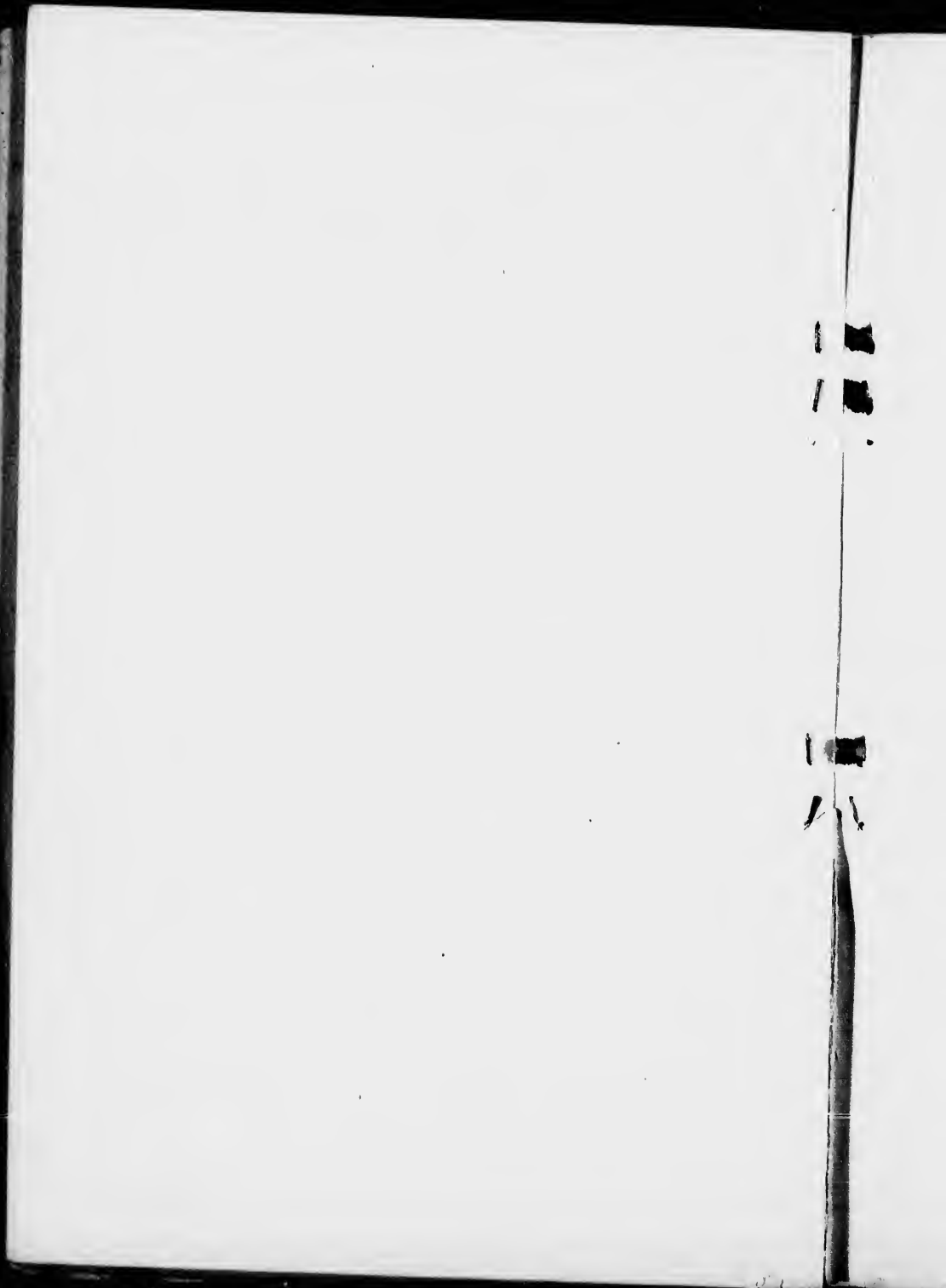
- No. 1, 2. Aythya Marila Neareteca—Scaup Duck.  
 3, 4. Glaucionetta Clangula Americana—Golden eye Duck.  
 5, 6. Glauceonetta Islandica—Barrow's Golden eye Duck.  
 7, 8. Charionetta Albeola—Buffle head Duck.  
 9, 10. Clangula Hyemalis—Old Squaw.  
 12, 13. Histrionicus Histrionicus—Harlequin Duck.

## Case 19.

*Order* : ANSERES.

- No. 1, 2. Somateria Mollissima Borealis—Greenland Eider Duck.  
 3, 4. Oidemia Americana—American Scoter.  
 5, 6. Oidemia Deglandi—White winged Scoter.  
 7, 8. Oidemia Perspicillata—Surf Scoter.  
 9, 10. Erismatura Rubida—Ruddy Duck.





## GROUP XVI.

## MAMMALIA.

- No. 1. { Condylura Cristata—(Star-nosed Mole).  
 } vel Talpa cristata.  
*Family* : Talpidæ.  
*Order* : Insectivora.
- No. 3. Sorex Macrurus—(Long-tailed Shrew).  
*Family* : Soricidæ.  
*Order* : Insectivora.
- No. 4. Sorex Brevicaudis—(Short-tailed Shrew).  
*Family, etc* : Same as No. 3.
- No. 5. Microtus Acadicus—(Field Mouse).  
*Family* : Muridæ.  
*Order* : Glires. (vel Rodentra).
- No. 6. Microtus Cinnamomeus.  
*Family* : Muridæ.  
*Order* : As No. 5.
- No. 7. Mus Decumanus—(Rat).  
*Family, etc* : Same as above.
- No. 8. Sciurus Hudsonicus.  
*Family* : Sciuridæ.  
*Order* : Glires. (Rodentia).
- No. 9. Sciurus Carolinensis.  
 (Variety cinereus.)  
*Family, etc* : Same as No. 8.
- No. 10. Tamias Striatus.  
*Family* : Same as No. 8.
- No. 11. Sciuropus Volans.  
 vel Ptormyx Volans.
- No. 12. Erethizon Dorsatus.  
*Family* : Erethizontidæ.  
*Order* : Glires.
- No. 13. Arctomys Monax.  
*Family* : Sciuridæ.  
*Order* : Glires.
- No. 14. Fiber Zibethicus.  
*Family* : Muridæ.  
*Order* : Glires.
- No. 15. Lutreola Vison—(Mink).  
*Family* : Mustelidæ.  
*Order* : Feræ. (Carnivora.)

- No. 16. *Lepus Timidus.*  
*Family: Leporidae.*  
*Order: Rodentia.*
- No. 17. *Vulpes Rubricosa.*  
*Family: Canidae.*  
*Order: Feræ.*
- No. 18. *Procyon Lotor—(Raccoon).*  
*Family: Procyonidae.*  
*Order: Feræ.*



