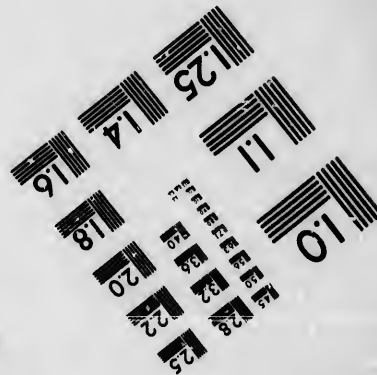
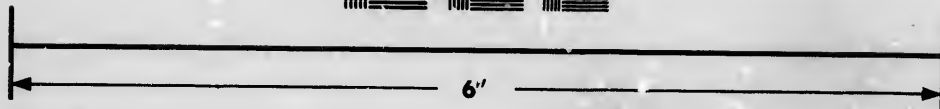
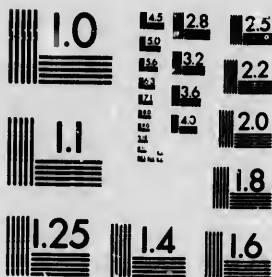


**IMAGE EVALUATION  
TEST TARGET (MT-3)**



**Photographic  
Sciences  
Corporation**

23 WEST MAIN STREET  
WEBSTER, N.Y. 14580  
(716) 672-4503

**CIHM/ICMH  
Microfiche  
Series.**

**CIHM/ICMH  
Collection de  
microfiches.**



**Canadian Institute for Historical Microreproductions / Institut canadien de microreproductions historiques**

**© 1986**

Technical and Bibliographic Notes/Notes techniques et bibliographiques

The institute has attempted to obtain the best original copy available for filming. Features of this copy which may be bibliographically unique, which may alter any of the images in the reproduction, or which may significantly change the usual method of filming, are checked below.

L'institut a microfilmé le meilleur exemplaire qu'il lui a été possible de se procurer. Les détails de cet exemplaire qui sont peut-être uniques du point de vue bibliographique, qui peuvent modifier une image reproduite, ou qui peuvent exiger une modification dans la méthode normale de filmage sont indiqués ci-dessous.

- Coloured covers/  
Couverture de couleur
- Covers damaged/  
Couverture endommagée
- Covers restored and/or laminated/  
Couverture restaurée et/ou pelliculée
- Cover title missing/  
Le titre de couverture manque
- Coloured maps/  
Cartes géographiques en couleur
- Coloured ink (i.e. other than blue or black)/  
Encre de couleur (i.e. autre que bleue ou noire)
- Coloured plates end/or illustrations/  
Planches et/ou illustrations en couleur
- Bound with other material/  
Relié avec d'autres documents
- Tight binding may cause shadows or distortion along interior margin/  
La reliure serrée peut causer de l'ombre ou de la distorsion le long de la marge intérieure
- Blank leaves added during restoration may appear within the text. Whenever possible, these have been omitted from filming/  
Il se peut que certaines pages blanches ajoutées lors d'une restauration apparaissent dans le texte, mais, lorsque cela était possible, ces pages n'ont pas été filmées.
- Additional comments:/  
Commentaires supplémentaires:

- Coloured pages/  
Pages de couleur
- Pages damaged/  
Pages endommagées
- Pages restored and/or laminated/  
Pages restaurées et/ou pelliculées
- Pages discoloured, stained or foxed/  
Pages décolorées, tachetées ou piquées
- Pages detached/  
Pages détachées
- Showthrough/  
Transparence
- Quality of print varies/  
Qualité inégale de l'impression
- Includes supplementary material/  
Comprend du matériel supplémentaire
- Only edition available/  
Seule édition disponible
- Pages wholly or partially obscured by errata slips, tissues, etc., have been refilmed to ensure the best possible image/  
Les pages totalement ou partiellement obscurcies par un feuillet d'errata, une pelure, etc., ont été filmées à nouveau de façon à obtenir la meilleure image possible.

This item is filmed at the reduction ratio checked below/  
Ce document est filmé au taux de réduction indiqué ci-dessous.

10X	14X	18X	22X	26X	30X
<input type="checkbox"/>	<input type="checkbox"/>	<input type="checkbox"/>	<input checked="" type="checkbox"/>	<input type="checkbox"/>	<input type="checkbox"/>
12X	16X	20X	24X	28X	32X

The copy filmed here has been reproduced thanks to the generosity of:

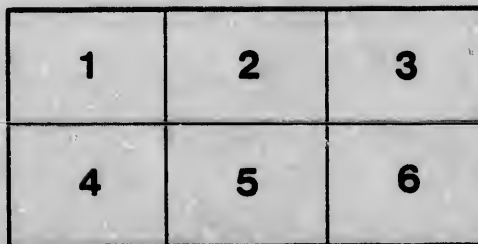
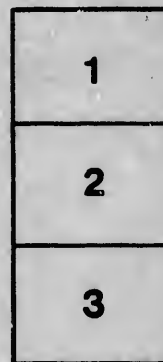
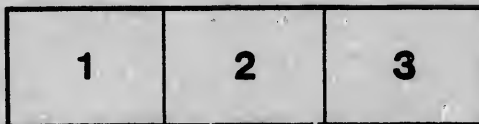
New Brunswick Museum  
Saint John

The images appearing here are the best quality possible considering the condition and legibility of the original copy and in keeping with the filming contract specifications.

Original copies in printed paper covers are filmed beginning with the front cover and ending on the last page with a printed or illustrated impression, or the back cover when appropriate. All other original copies are filmed beginning on the first page with a printed or illustrated impression, and ending on the last page with a printed or illustrated impression.

The last recorded frame on each microfiche shall contain the symbol  $\rightarrow$  (meaning "CONTINUED"), or the symbol  $\nabla$  (meaning "END"), whichever applies.

Maps, plates, charts, etc., may be filmed at different reduction ratios. Those too large to be entirely included in one exposure are filmed beginning in the upper left hand corner, left to right and top to bottom, as many frames as required. The following diagrams illustrate the method:



L'exemplaire filmé fut reproduit grâce à la générosité de:

New Brunswick Museum  
Saint John

Les images suivantes ont été reproduites avec le plus grand soin, compte tenu de la condition et de la netteté de l'exemplaire filmé, et en conformité avec les conditions du contrat de filmage.

Les exemplaires originaux dont la couverture en papier est imprimée sont filmés en commençant par le premier plat et en terminant soit par la dernière page qui comporte une empreinte d'impression ou d'illustration, soit par le second plat, selon le cas. Tous les autres exemplaires originaux sont filmés en commençant par la première page qui comporte une empreinte d'impression ou d'illustration et en terminant par la dernière page qui comporte une telle empreinte.

Un des symboles suivants apparaîtra sur la dernière image de chaque microfiche, selon le cas: le symbole  $\rightarrow$  signifie "A SUIVRE", le symbole  $\nabla$  signifie "FIN".

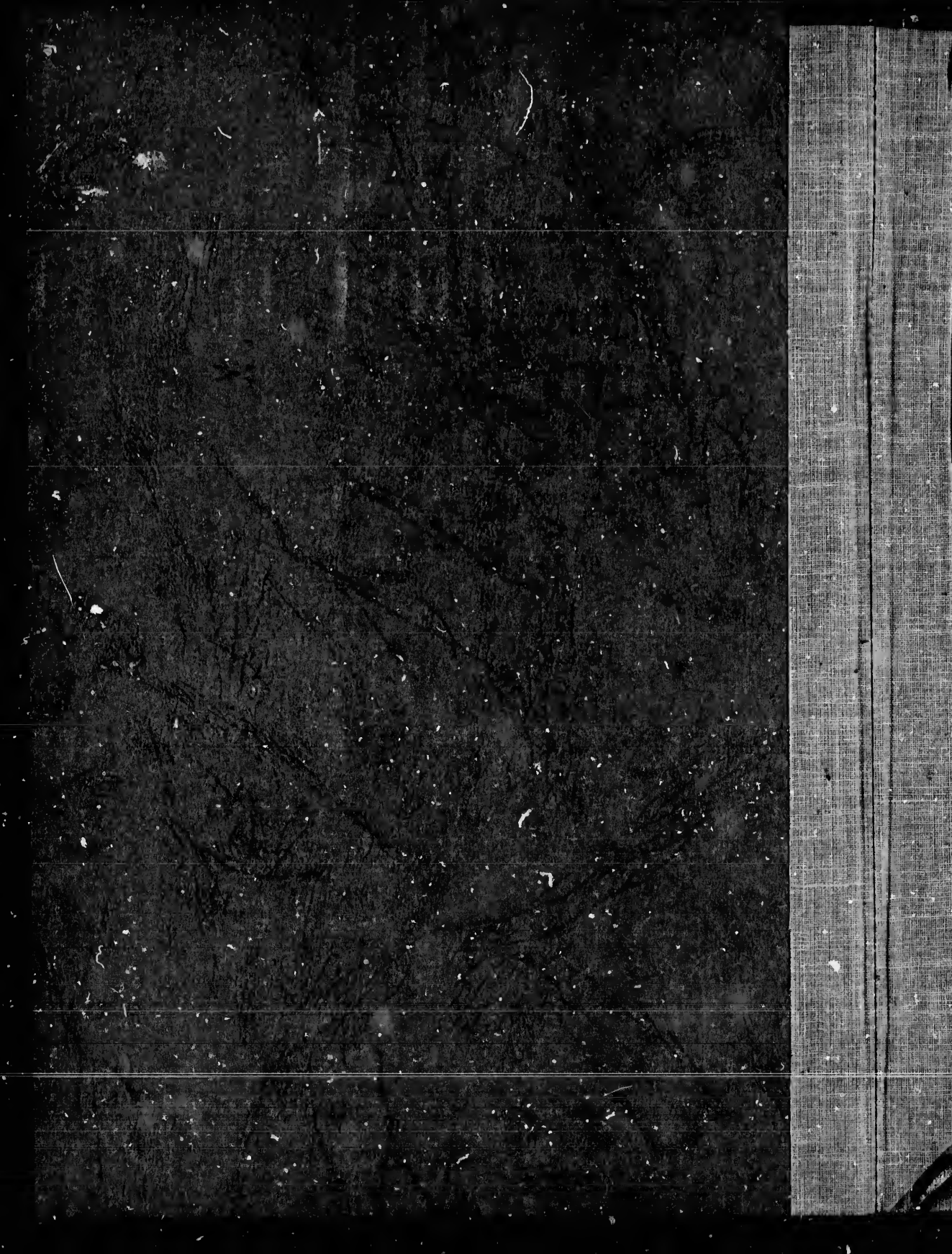
Les cartes, planches, tableaux, etc., peuvent être filmés à des taux de réduction différents. Lorsque le document est trop grand pour être reproduit en un seul cliché, il est filmé à partir de l'angle supérieur gauche, de gauche à droite, et de haut en bas, en prenant le nombre d'images nécessaire. Les diagrammes suivants illustrent la méthode.

ails  
du  
diffier  
une  
page

rata  
o

elure,  
à

32X



G721

*Am. Hill*  
*St. Stephens*

# CATALOGUE

OF

## Government House Furniture

TO BE SOLD AT

### PUBLIC AUCTION

AT

GOVERNMENT HOUSE,  
FREDERICTON,

ON

WEDNESDAY, AUG. 18th, 1897,

COMMENCING AT 10 O'CLOCK, A. M., AND CONTINUING DAILY  
UNTIL EVERYTHING IS DISPOSED OF.

LIBRARY

- No. 1
- 2
- 3
- 4
- 5
- 6
- 7
- 8
- 9
- 10
- 11
- 12
- 13
- 14
- 15
- 16
- 17
- 18
- 19
- 20
- 21
- 22
- 23
- 24
- 25
- 26
- 27
- 28
- 29
- 30
- 31
- 32
- 33

# CATALOGUE.

---

- |     |  |  |
|-----|--|--|
| No. |  |  |
| 1   | State Drawing Room Brussels Carpet, 118 yards. |  |
| 2   | Rosewood Sideboard, with Drawers (very old).   |  |
| 3   | Mahogany " " " "                               |  |
| 4   | Butternut Dining Table.                        |  |
| 5   | " " " "  |  |
| 6   | " " " "  |  |
| 7   | " " " "  |  |
| 8   | Rosewood Lounge, Carved Legs, Chintz Covering. |  |
| 9   | " " " Rep "                                    |  |
| 10  | Walnut Chair, Maroon Rep.                      |  |
| 11  | " " " "  |  |
| 12  | " " " "  |  |
| 13  | " " " "  |  |
| 14  | " " " "  |  |
| 15  | " " " "  |  |
| 16  | " " " "  |  |
| 17  | " " " "  |  |
| 18  | " " " "  |  |
| 19  | " " " "  |  |
| 20  | " " " "  |  |
| 21  | " " " "  |  |
| 22  | " " " "  |  |
| 23  | " " " "  |  |
| 24  | " " " "  |  |
| 25  | " " " "  |  |
| 26  | " " " "  |  |
| 27  | " " " "  |  |
| 28  | " " " "  |  |
| 29  | " " " "  |  |
| 30  | " " " "  |  |
| 31  | " " " "  |  |
| 32  | " " " "  |  |
| 33  | " " " "  |  |

250 <  
21 2  
10 3 Table

8.50  
8.50  
1.95

*Furn*





No.		No.
34	Mahogany Chair, Leather Covered.	73
35	" "	74
36	" "	75
37	" "	76
38	" "	77
39	" "	78
40	" Figured Scarlet Rep.	79
41	" "	80
42	Mahogany Chair, Figured Scarlet Rep.	81
43	" "	82
44	" "	83
45	" "	83½
46	" "	84
47	" "	85
48	" "	85
49	" "	87
50	" "	88
51	" "	89
52	" "	90
53	" "	91
54	" "	92
55	" "	93
56	" "	94
57	" "	95
58	Pair Curtains, Prun Rep. and Lace.	96
59	" "	97
60	" "	98
61	Gilt Cornice.	99
62	" "	100
63	" "	101
64	Gas Bracket, 2 Porcelain Globes.	102
65	" "	103
66	" "	104
67	" "	105
68	" "	106
69	" "	107
70	" "	108
71	Large Chandelier, Glass Pendants and Chains, 6 globes.	109
72	Large Iron Fender.	110

3060

280. Dark

310

T. B. Wrayson

3.25

275 Mitchell

180

1.50

CATALOGUE.

No.	Description	Price
73	Pair Maroon Rep. Curtains.	
74	" "	1140
75	" "	50 (75)
76	" "	160
77	" "	65
78	Pair Dark Green Curtains.	80
79	1 Figured Table Cover.	25
80	4 Pairs Curtain Cords and Tassels.	25
81	Large Green Cloth Table Cover.	85
82	Small " "	70
83	" " "	40
83½	Light Colored Brussels Carpet, 92 yards.	
84	Walnut Chair, Hair Cloth.	70
85	" "	
86	" "	100
87	" "	85
88	" "	90
89	" "	125
90	" "	150
91	" "	
92	" "	
93	Rosewood Chair, Figured Rep Cover, Carved.	
94	" " "	120
95	" " "	50
96	" Chintz Covered, "	
97	" " "	160
98	Walnut Chair, Chintz Covered, Carved.	
99	" " "	
100	" " "	190
101	" " "	
102	Rosewood Chair, " "	300
103	" Cardinal Rep, Carved Back.	150
104	" " "	
105	Large Round Settee, Chintz Covered.	165
106	Butternut Chest, for Silverware.	400
107	Mahogany Office Table, Piano Legs, 4 Drawers.	1200
108	Rosewood Card Table, with Carved Legs.	
109	" " " "	
110	Walnut Card Table, Large.	250

Dark

low

mini/fal

50

300  
A. N. 1. 1. 1.



CATALOGUE

- No.
- 150 Corner Bracket and Draper.
- 151 Box, with 4 Mirrors in Sides.
- 152 Easel.
- 153 Pair Crimson Silk Rep Curtains, White Lining and Lace.
- 154 " " " " "
- 155 " " " " "
- 156 Walnut and Gilt Cornice.
- 157 " " " " "
- 158 " " " " "
- 159 Large Chandelier, Glass Chains and Pendants, 6 Globes.
- 160 Gas Bracket, 2 Glass Globes.
- 161 " " " "
- 162 " " " "
- 163 " " " "
- 164 " " " "
- 165 " " " "
- 166 " " " "
- 167 Sofa Pillow, Cretonne.
- 168 " " "
- 169 Mahogany Chair, Blue Trimming.
- 170 " " "
- 170 1/2 Dark Brussels Carpet, 55 yards.
- 171 Mahogany Sideboard, Carved Legs.
- 172 " Table, " "
- 173 " " " "
- 174 " " " "
- 175 " " " "
- 176 " " " "
- 177 " " " "
- 178 Brass Chandelier, 6 Porcelain Globes.
- 179 Large Mirror, Heavy Carved Frame.
- 180 1 Box, with 4 Mirrors in Sides.
- 181 " " " "
- 182 Brass Fender.
- 183 Pair Green Rep Curtains with Lace,
- 184 " " " "
- 185 Rosewood Table, Carved Legs.
- 186 Refrigerator.
- 187 Heavy Kitchen Table.

24.00

9.75 12.25

12.50 14.50

45H

173- Sweddie 14.75

mirror

Globes.

and Lace.

Handwritten notes on the left margin, including "Darker" and "10.00".

ae. 25.00

No.		No.
188	Sideboard.	227
189	Hardwood Chair, Chintz Covered.	228
190	" " Rep "	229
191	Common Chair.	230
192	Carpot.	231
193	2-Jet Gas Bracket.	232
194	1 " "	233
195	Small Sideboard.	234
196	Box Stove, 15 Joints Pipe, 4 Elbows.	235
197	Large Closet.	236
198	" "	237
199	Small "	238
200	" "	239
201	3 Dish Covers.	240
202	Step Ladder.	241
203	Hall Carpet (Brussels), 74 yards.	242
204	Bracket.	243
205	Tin Screen.	244
206	Chandelier, with Glass Chains and Pendants, 4 Globes.	245
207	Sideboard.	246
208	Walnut Sideboard, Modern, Carved Top.	247
209	Long Table.	248
210	Common Table.	249
211	" "	250
212	" "	251
213	Common Chair.	252
214	Brass Fender.	253
215	Fire Irons and Stand.	254
216	Pair Cardinal Rep and Lace Curtains.	255
217	Carpet, yards.	256
218	" "	257
219	Rug.	258
220	Office Table, Mahogany.	259
221	Marble Top Mahogany Bureau, with Mirror.	260
222	" " Sink.	261
223	Mahogany Lounge, Covered Crimson Silk.	262
224	Walnut Writing Desk.	263
225	Walnut Chair, Hair Cloth.	264
226	" "	265

250 X  
226 X

CATALOGUE.

- 227 Rosewood Chair, Hair Cloth.
- 228 " " "
- 229 Hardwood Chair, "
- 230 " " "
- 231 Low Walnut Chair, Maroon Rep Trimming.
- 232 Chandelier.
- 233 Pair Curtains, Cardinal Rep and Lace, with Tassels.
- 234 Gilt Cornice.
- 235 Piece Oilcloth.
- 236 " " "
- 237 Arm Chair,
- 238 " " "
- 239 Marble Top Walnut Table.
- 240 " " "
- 241 Walnut Hat Rack, Marble Top and Mirror.
- 242 " " "
- 243 Large Leather Covered Sofa, Carved Frame.
- 244 Walnut Chair, with Flap Seat.
- 245 " " "
- 246 " " "
- 247 " " "
- 248 " " "
- 249 " " "
- 250 Case Birds (Partridge).
- 251 Wicker Chair.
- 252 Walnut "
- 253 Hardwood Chair, Rep Trimming.
- 254 Rug.
- 255 Pair Cardinal Rep Curtains, Cords and Tassels.
- 256 " " "
- 257 Piece Brass Tubeing.
- 258 " " "
- 259 Pair Rep Curtains, Cords and Tassels.
- 260 " " "
- 261 Clock (eight day).
- 262 Large Chandelier, Glass Chains and Pendants.
- 263 Patent Box Stove, Russia Iron Pipe.
- 264 Large Tin Screen.
- 265 Zinc Covered Stand for Stove.

*one chair*

No.		No.
265½	Brussels Carpet, 102 yards (entrance).	304
266	Carpet.	305
267	Large Easy Chair, Trimmed with Cretonne.	306
268	Small " " "	306½
269	Closet Desk, with Books and Papers.	307
270	Closet " "	308
271	" " "	309
272	Box of Books and Papers.	310
273	" " "	311
274	" " "	312
275	" " "	313
276	Mahogany Desk, three Drawers.	314
277	Birds-Eye View of Fredericton, in Frame.	315
278	Pair Green Curtains, with Lace, Cords and Tassels.	316
279	Brass Chandelier, 3 Porcelain Globes.	317
280	Map of England.	318
281	Map of Timber Lands, New Brunswick.	318½
282	Johnston's Diagrams.	319
283	Walnut Chair, Hair Cloth.	320
284	" " "	321
285	Fire Irons and Stand.	322
286	Pair Green Curtains, with Brass Rings.	323
287	1 Green Table Cover.	324
288	Brussels Carpet, 33 yards.	325
289	Large Old-Fashioned Sofa, Carved Frame with Pillows.	326
290	" " Easy Chair.	327
291	Small Easy Chair.	328
292	" " "	329
293	"Governor's" Easy Chair, Hair Cloth.	330
294	Low Walnut Chair, Cretonne Trimming.	331
295	Hard Wood Chair, Rep.	332
296	Rosewood Chair, Carved Back.	333
297	Mahogany Table, Cloth Covered, 6 drawers.	333½
298	Pair Green Curtains, with Lace, Cords and Tassels.	334
299	Brass Chandelier, 2 Globes.	335
300	Brass Fender.	336
301	Table with Drawers.	337
302	Piece Brass Tubeing.	338
303	Glass Chandelier, 4 Globes.	339

- No.
- 304 High Desk, Cloth Covered.
  - 305 Piece Brass Tubeing.
  - 306 Pair Curtains, Cords and Tassels.
  - 306½ Brussels Carpet in Hall, lower end, 81 yards.
  - 307 Mahogany Lounge, Carved, Cretonne Trimming. 12 70
  - 308 Easy Chair (Mahogany).
  - 309 Walnut Chair, Hair Cloth.
  - 310 Mahogany Chair, "
  - 311 " " Cretonne. 225
  - 312 " " " 235
  - 313 Carved Chair, Cretonne. 235
  - 314 " " "
  - 315 " " "
  - 316 " " Rep.
  - 317 " " "
  - 318 " " "
  - 318½ Dark Brussels Carpet, 64 yards.
  - 319 Walnut Marble Top Stand.
  - 320 Large Table, with Drawers, Cloth Covered.
  - 321 Table with Back.
  - 322 Wicker Easy Chair, Cretonne trimming.
  - 323 Chair.
  - 324 " "
  - 325 Camp Chair.
  - 326 Pair Curtains, with Lace.
  - 327 Brass Chandelier, 6 Glass Globes. 50
  - 328 Plate Glass Mirror, Heavy Carved Frame. Large Mirror
  - 329 Bracket Mirror.
  - 330 " "
  - 331 Pair Curtains, with Lace.
  - 332 Large Brass Fender.
  - 333 Round Table.
  - 333½ Hardwood Chair, Rep Trimming.
  - 334 Low Chair, Fancy Trimming.
  - 335 Piece Brussels Carpet, 8 yards.
  - 336 " " " 15½ yards.
  - 337 Piece Stair Carpet, 5½ yards.
  - 338 Piece Brussels Carpet, 14½ yards.
  - 339 Rug.

*one chair  
cheap hand work 135*

1650



No.	
340	Rug.
341	"
342	Piece Velvet Pile Carpet, 11½ yards.
343	Large Heavy Rug.
344	Piece Brussels Carpet.
345	Rug.
346	"
347	Piece Stair Carpet.
348	" "
349	4 Pieces Carpet.
350	Large Table, Cloth Covered.
351	Mahogany Lounge.
352	Box Stove and Pipe.
353	White Fur Robe.
354	" "
355	Coal Hod.
356	Closet.
357	Camp Chair.
358	"
359	"
360	"
361	Black Chair.
362	Step-Ladder.
363	Chandelier, 3 Glass Globes.
364	Basin and Top.
365	Water Closet.
366	Storm Door, Covered with Red Baize.
367	Large Venetian Blind.
368	Gas Bracket, 1 Jet.
369	Pair Curtains.
370	Black Chair.
371	Tin Screen.
372	Gas Fixture, 1 Jet.
373	Window Drapery.
374	"
375	Brussels Carpet, 74 yards (½ of Hall upstairs).
376	Silver Plated.
377	Gas Fixture, 2 Jets, with Chains and Weight.
378	Clothes Press.

No.	
379	
380	
381	
382	
383	
384	
385	
386	
387	
388	
389	
390	
391	
392	
393	
394	
395	
396	
397	
398	
399	
400	
401	
402	
403	
404	
405	
406	
407	
408	
409	
410	
411	
412	
413	
414	
415	
416	
417	

CATALOGUE.

13

- No.
- 379 26 Very Heavy Flat Brass Stair Rods.
- 380 20 Round " "
- 381 Carpet, 16 yards.
- 382 Large Rug, with Fringe.
- 383 Rug.
- 384 " "
- 385 " "
- 386 Linen Pillow Case.
- 387 " "
- 388 " "
- 389 Sheepskin Mat.
- 390 " "
- 391 Pair Red Curtains.
- 392 " "
- 393 Pair Rep Curtains, with Lace, Cords and Tassels.
- 394 Gilt Cornice.
- 395 Table with Drawers.
- 396 Washstand, with Towel Rack.
- 397 Towel Rack.
- 398 Bureau, with 6 Drawers.
- 399 Chair, with Carved Back, Chintz Covering.
- 400 " " "
- 401 Lot of Cords and Tassels.
- 402 Pair " "
- 403 " " "
- 404 " " "
- 405 " " "
- 406 Tin Letter Box.
- 407 Pair Fine Japanese Vases.
- 408 Pair Fine Vases, with Governors' Portraits.
- 409 Round Glass Case Birds.
- 410 Paper File.
- 411 Glass Globe.
- 412 " "
- 413 " "
- 414 " "
- 415 " "
- 416 " "
- 417 Porcelain Globe.

No.	
418	Wash Bowl, Pitcher and Chamber Mug
419	" " "
420	" " "
421	" Pitcher and Soap Dish.
422	" "
423	Chamber Mug.
424	Soap Dish.
425	"
426	"
427	"
428	Cut Glass Water Bottle.
429	Water Can.
430	"
431	"
432	"
433	Gas Bracket and Glass Globe.
434	Wash Bowl, Pitcher and Soap Dish.
435	Brussels Carpet, 75 yards.
436	Iron Bedstead, Canopy Top, Red Drapery.
437	Curled Hair Mattress.
438	" "
439	Large Feather Bolster.
440	Pair Excelsior Mattresses.
441	Mahogany Dressing Table, Marble Top, Full Length Plate Mirror. 31.00 F.P. Thompson
442	Mahogany Bureau, Marble Top and Mirror.
443	" Marble Top Commode. 5.00
444	" Centre Table.
445	" Easy Chair, Covered Rep Trimming.
446	" Chair " "
447	" " " "
448	" " " "
449	" " " "
450	" " " "
451	Walnut Secretary.
452	Mahogany Wardrobe, with Drawers. 20.00
453	Towel Rack.
454	Chandelier, Brass, 4 Glass Globes.
455	Gas Fixture, 1 Glass Globe.

No.
456
457
458
459
460
461
462
463
464
465
466
467
468
469
470
471
472
473
474
475
876
477
478
479
480
481
482
483
484
485
486
487
488
489
490
491
492

45 H

- No.  
 456 Gas Fixture, 1 Glass Globe.  
 457 Gilt Cornice.  
 458 " "  
 459 Earth Closet.  
 460 Brass Chandelier, 3 Glass Globes.  
 461 Gilt Cornice.  
 462 Brussels Carpet, 43 yards.  
 463 Butternut Wardrobe.  
 464 Walnut Marble Top Dressing Table and Glass,  
 465 Large Walnut Easy Chair, Cretonne Upholstering.  
 466 Small " " "  
 467 Walnut Easy Chair, Carved Back and Legs, Cretonne Up-  
 holstering.  
 468 Walnut Chair, Carved Back and Legs, Cretonne Upholstering.  
 469 " " " "  
 470 " " " "  
 471 Gas Bracket, 1 Jet.  
 472 " "  
 473 Brass Fender.  
 474 Fire Irons and Stand.  
 475 Gilt Cornice.  
 876 " "  
 477 Brass Chandelier, 2 lights.  
 478 Velvet Pile Carpet, 97 yards.  
 479 " Rug.  
 480 Royal Bedstead, Iron, Canopy Top and Plumes, Brocaded Satin  
 and Lace Curtains.  
 481 Curled Hair Mattress, 6 feet square.  
 482 " " "  
 483 Large Feather Bolster.  
 484 Mahogany Wardrobe.  
 485 Walnut Dressing Table and Glass.  
 486 Massive Walnut Centre Table.  
 487 Mahogany Easy Chair, Brocaded Satin Upholstering.  
 488 Mahogany Chair, " "  
 489 " " "  
 490 " " "  
 491 " " "  
 492 " " "

length Plate

No.		No.
493	Mahogany Chair, Brocaded Satin Upholstering.	530
494	" " "	531
495	" " "	532
496	Mahogany Marble Top Side Table, 2 Drawers.	533
497	Walnut Marble Top Stand.	534
498	Large Plate Glass Mirror, Gilt Frame.	535
499	Large Table Cover.	536
500	Sofa Pillow, Cretonne.	537
501	Pair Brocaded Satin Curtains.	538
502	" " "	539
503	" " "	540
503½	" " "	541
504	3½ yards Red Fringe.	542
505	Wash Bowl, Pitcher and Chamber.	543
506	" " "	544
507	Royal Gilt Cornice.	545
508	" " "	546
509	" " "	547
510	Brass Chandelier, 4 Glass Globes.	548
511	Brass Wall Fixture, 2 "	549
512	" " "	550
513	Velvet Pile Carpet, 42 yards.	551
514	" Rug.	552
515	Mahogany Dressing Table, Marble Top, Full Length Plate Mirror.	553
516	Mahogany Lounge, Green Rep Upholstering.	554
517	Mahogany Easy Chair, "	555
518	Hardwood Chair, "	556
519	" " "	557
520	" " "	558
521	Pair Green Curtains, Cords and Tassels.	559
522	Gilt Cornice.	560
523	Brass Fender.	561
524	Brass Chandelier, 3 Glass Globes.	562
525	Coal hod.	563
526	Pair Tongs.	564
527	" "	565
528	Light Brussels Carpet, 60 yards.	566
529	Large Rug.	567
		568

- No.
- 530 Iron Bedstead, Canopy Top, Chintz Curtains and Drapery.
  - 531 Hair Mattress.
  - 532 Excelsior Mattress.
  - 533 Feather Bolster.
  - 534 Large Butternut Wardrobe, 2 drawers and shelf.
  - 535 Butternut Bureau, with Top and Mirror.
  - 536 " "
  - 537 Walnut Centre Table (Plain).
  - 538 " Marble Top Commode.
  - 539 " Towel Rack.
  - 540 Mahogany Easy Chair, Blue Rep Upholstering.
  - 541 " Chair, " "
  - 542 " " " "
  - 543 " " " "
  - 544 " " " "
  - 545 Brass Fender.
  - 546 Gilt Cornice.
  - 547 " "
  - 548 Gas Bracket.
  - 549 " "
  - 550 Dark Brussels Carpet, 27 yards.
  - 551 Rug.
  - 552 Mahogany Marble Top Wash Stand, 2 Drawers.
  - 553 Walnut Marble Top Table.
  - 554 Mahogany Easy Chair, Blue Rep Upholstering.
  - 555 Camp Chair.
  - 556 Iron Bedstead, Painted Yellow.
  - 557 " " Dark Blue.
  - 558 Walnut Towel Rack.
  - 559 " "
  - 560 Gilt Cornice.
  - 561 Chandelier, 2 Lights, 1 Glass Globe.
  - 562 Brussels Carpet, 64 yards (Upper  $\frac{1}{2}$  of Hall).
  - 563 Chandelier, 2 Lights.
  - 564 Wardrobe (Plain).
  - 565 Mahogany Wardrobe, 2 drawers.
  - 566 Butternut " " and shelves.
  - 567 Wardrobe (Plain).
  - 568 Walnut Marble Top Dressing Table, Top and Mirror.

Length Plate

No.		No.
569	Walnut Marble Top Commode.	608
570	Towel Rack.	609
571	Butternut Bedstead.	610
572	Excelsior Mattress.	611
573	"	612
574	Flock Mattress.	613
575	"	614
576	Pillow.	615
577	Pair Lace Curtains.	616
578	"	617
579	Blue Table Cover.	618
580	Mahogany Centre Table.	619
581	Mahogany Table, 2 drawers, Carved Legs. <i>4 b. VD</i>	620
582	Mahogany Easy Chair, Chintz Upholstering.	621
583	" " "	622
584	Mahogany Lounge, "	623
585	Mahogany Chair, "	624
586	Walnut Chair, "	625
587	Butternut Washstand.	626
588	Pair Chintz Curtains, Cords and Tassels.	627
589	" " "	628
590	Gilt Cornice.	629
591	"	630
592	Brass Chandelier, 4 Lights, 3 Glass Globes.	631
593	Brass Fender.	632
594	Coal Hod.	633
595	Pair Togs.	634
596	Brussels Carpet.	635
597	Rug.	636
598	Butternut Wardrobe, 2 Drawers.	637
599	" Bureau, 2 "	638
600	Mahogany Table, Carved Legs, 4 Drawers. <i>J P</i>	639
601	Lounge, Cretonne Upholstering.	640
602	Butternut Commode, Marble Top.	641
603	Iron Bedstead.	642
604	Straw Mattress.	643
605	"	644
606	Easy Chair, Chintz Covering.	645
607	Pair Chintz Lace Curtains, Cords and Tassels.	646

X 9 FH  
X

\*

X 16. VD

# CATALOGUE

19

- No.
- 608 Pair Chintz Lace Curtains, Cords and Tassels.
  - 609 Gas Bracket, 1 Glass Globe.
  - 610 " 1 "
  - 611 Wash Bowl, Pitcher and Soap Dish.
  - 612 Water Can.
  - 613 Piece Oilcloth.
  - 614 Gas Bracket, 1 Light (Upper End of Hall).
  - 615 Window Drapery (2 Windows End of Hall).
  - 616 Pine Wardrobe.
  - 617 Washstand.
  - 618 Iron Bedstead.
  - 619 Wooden Bedstead.
  - 620 Straw Mattress.
  - 621 Pair Red Baize Doors.
  - 622 Franklyn.
  - 623 " "
  - 624 Flock Mattress.
  - 625 " "
  - 626 " "
  - 627 " "
  - 628 Straw Mattress.
  - 629 Earth Closet.
  - 630 Closet.
  - 631 Camp Chair.
  - 632 " "
  - 633 " "
  - 634 Brass Fender.
  - 635 Tongs, Poker and Stand.
  - 636 " "
  - 637 " "
  - 638 " "
  - 639 Cane Seat Chair.
  - 640 Bunch Flat Brass Stair Rods.
  - 641 " Round " "
  - 642 Large Round Top for Table.
  - 643 " Table and Stand.
  - 644 " "
  - 645 Piece Carpet, 4 yards.
  - 646 1½ Pairs Green Curtains.



No.	
647	Small Closet.
648	Dark Carpet, 40 yards.
649	Rug.
650	Iron Bedstead.
651	Straw Mattress.
652	"
653	Bureau.
654	Washstand.
655	Towel Rack.
656	Table.
657	Cane Seat Chair.
658	Small Commode.
659	"
660	Franklyn.
661	52 Yards Carpet.
662	Bedstead.
663	Straw Mattress.
664	Bedstead.
665	Flock Mattress.
666	Table and Green Cover.
667	Mirror and Stand.
668	Wardrobe.
669	Closet.
670	Pair Green Curtains (small).
671	Round Heavy Bath Pan.
672	High Back "
673	Hat Shape "
674	" "
675	Tin Slop Pail.
676	Iron Crib.
677	Map of Prince Edward Island.
678	Hat Shape Bath Pan.
679	High Back "
680	Foot Tub.
681	Black Chair.
682	Small Water Can.
683	23 Yards of Carpet.
684	Table, with Top Piece and Drawers.
685	" Drawers.

No.	
686	T
687	V
688	
689	V
690	F
691	T
692	B
693	G
694	V
695	T
696	L
697	

Beside  
variety of  
chairs, b

BOARD  
J

53

21

0

21

41

51

61

01

11

21

7. Br

Ma

0 Mr

blu

CATALOGUE.

21

- No.
- 686 Table.
- 687 Washstand, 2 Drawers.
- 688 " 1 "
- 689 Wardrobe.
- 690 Plate Glass Mirror and Stand.
- 691 Towel Rack.
- 692 Box Stove and Pipe.
- 693 Gas Bracket, 1 Light.
- 694 Wardrobe.
- 695 Table.
- 696 Large Drawer, Brass Handle.
- 697 " "

Besides articles enumerated in Catalogue, there will be sold a great variety of miscellaneous goods, such as old kitchen utensils, stoves, chairs, books, etc., etc., that could not be very well catalogued.

BOARD WORKS OFFICE,  
July 17, 1897.

53	white rug		
21	1 Chm. Walnut	4 <del>25</del>	Red plush
0	1 Mahogany chair	3 25	Blue
2	1 Dining Table	12,50	
4	do	14,50	
5	1 walnut chair Ven	2 00	
6	do	2 50	
0	1 Mahogany chair	2 25	
1	do	2 25	
2	do	2 25	
7	Brass dinner table white	5 00	46.00
8	Mahogany commode	5 00	
0	Mahogany center Table	24 00	89.20
	Old Mahogany Table		16.00

