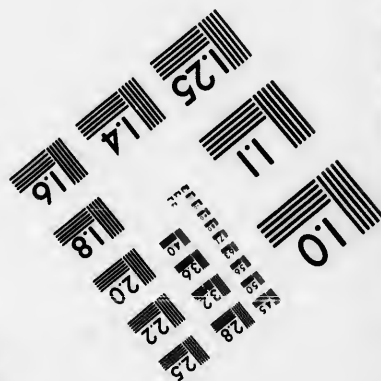
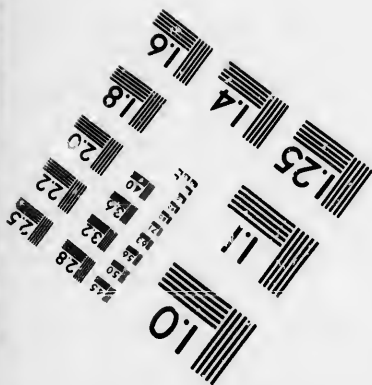
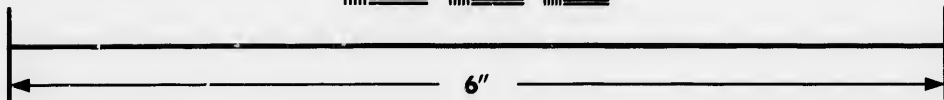
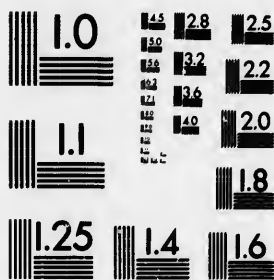


**IMAGE EVALUATION  
TEST TARGET (MT-3)**



**Photographic  
Sciences  
Corporation**

23 WEST MAIN STREET  
WEBSTER, N.Y. 14580  
(716) 872-4503

1.5 1.8 2.0 2.2 2.5  
1.8 2.0 2.2 2.5  
2.0 2.2 2.5  
2.2 2.5  
2.5

**CIHM/ICMH  
Microfiche  
Series.**

**CIHM/ICMH  
Collection de  
microfiches.**



**Canadian Institute for Historical Microreproductions / Institut canadien de microreproductions historiques**

**© 1985**

1.5 1.8 2.0 2.2 2.5  
1.8 2.0 2.2 2.5  
2.0 2.2 2.5  
2.2 2.5  
2.5

Technical and Bibliographic Notes/Notes techniques et bibliographiques

The Institute has attempted to obtain the best original copy available for filming. Features of this copy which may be bibliographically unique, which may alter any of the images in the reproduction, or which may significantly change the usual method of filming, are checked below.

L'Institut a microfilmé le meilleur exemplaire qu'il lui a été possible de se procurer. Les détails de cet exemplaire qui sont peut-être uniques du point de vue bibliographique, qui peuvent modifier une image reproduite, ou qui peuvent exiger une modification dans la méthode normale de filmage sont indiqués ci-dessous.

- Coloured covers/  
Couverture de couleur
- Covers damaged/  
Couverture endommagée
- Covers restored and/or laminated/  
Couverture restaurée et/ou pelliculée
- Cover title missing/  
Le titre de couverture manque
- Coloured maps/  
Cartes géographiques en couleur
- Coloured ink (i.e. other than blue or black)/  
Encre de couleur (i.e. autre que bleue ou noire)
- Coloured plates and/or illustrations/  
Planches et/ou illustrations en couleur
- Bound with other material/  
Relié avec d'autres documents
- Tight binding may cause shadows or distortion along interior margin/  
La reliure serrée peut causer de l'ombre ou de la distorsion le long de la marge intérieure
- Blank leaves added during restoration may appear within the text. Whenever possible, these have been omitted from filming/  
Il se peut que certaines pages blanches ajoutées lors d'une restauration apparaissent dans le texte, mais, lorsque cela était possible, ces pages n'ont pas été filmées.
- Additional comments: /  
Commentaires supplémentaires:

[Printed ephemera] 1 sheet (verso blank)

- Coloured pages/  
Pages de couleur
- Pages damaged/  
Pages endommagées
- Pages restored and/or laminated/  
Pages restaurées et/ou pelliculées
- Pages discoloured, stained or foxed/  
Pages décolorées, tachetées ou piquées
- Pages detached/  
Pages détachées
- Showthrough/  
Transparence
- Quality of print varies/  
Qualité inégale de l'impression
- Includes supplementary material/  
Comprend du matériel supplémentaire
- Only edition available/  
Seule édition disponible
- Pages wholly or partially obscured by errata slips, tissues, etc., have been refilmed to ensure the best possible image/  
Les pages totalement ou partiellement obscurcies par un feuillet d'errata, une pelure, etc., ont été filmées à nouveau de façon à obtenir la meilleure image possible.

This item is filmed at the reduction ratio checked below/  
Ce document est filmé au taux de réduction indiqué ci-dessous.

|     |     |     |     |     |     |     |     |     |     |     |     |
|-----|-----|-----|-----|-----|-----|-----|-----|-----|-----|-----|-----|
| 10X | 12X | 14X | 16X | 18X | 20X | 22X | 24X | 26X | 28X | 30X | 32X |
|     |     |     |     | ✓   |     |     |     |     |     |     |     |

The copy filmed here has been reproduced thanks to the generosity of:

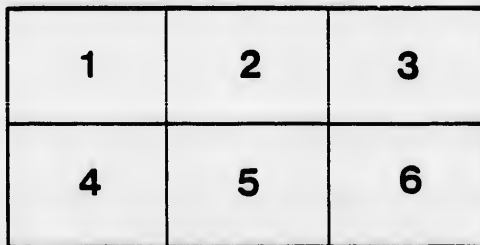
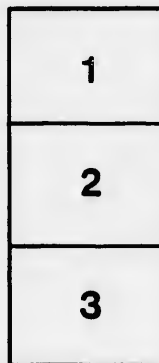
D. B. Weldon Library  
University of Western Ontario  
(Regional History Room)

The images appearing here are the best quality possible considering the condition and legibility of the original copy and in keeping with the filming contract specifications.

Original copies in printed paper covers are filmed beginning with the front cover and ending on the last page with a printed or illustrated impression, or the back cover when appropriate. All other original copies are filmed beginning on the first page with a printed or illustrated impression, and ending on the last page with a printed or illustrated impression.

The last recorded frame on each microfiche shall contain the symbol  $\rightarrow$  (meaning "CONTINUED"), or the symbol  $\nabla$  (meaning "END"), whichever applies.

Maps, plates, charts, etc., may be filmed at different reduction ratios. Those too large to be entirely included in one exposure are filmed beginning in the upper left hand corner, left to right and top to bottom, as many frames as required. The following diagrams illustrate the method:



L'exemplaire filmé fut reproduit grâce à la générosité de:

D. B. Weldon Library  
University of Western Ontario  
(Regional History Room)

Les images suivantes ont été reproduites avec le plus grand soin, compte tenu de la condition et de la netteté de l'exemplaire filmé, et en conformité avec les conditions du contrat de filmage.

Les exemplaires originaux dont la couverture en papier est imprimée sont filmés en commençant par le premier plat et en terminant soit par la dernière page qui comporte une empreinte d'impression ou d'illustration, soit par le second plat, selon le cas. Tous les autres exemplaires originaux sont filmés en commençant par la première page qui comporte une empreinte d'impression ou d'illustration et en terminant par la dernière page qui comporte une telle empreinte.

Un des symboles suivants apparaîtra sur la dernière image de chaque microfiche, selon le cas: le symbole  $\rightarrow$  signifie "A SUIVRE", le symbole  $\nabla$  signifie "FIN".

Les cartes, planches, tableaux, etc., peuvent être filmés à des taux de réduction différents. Lorsque le document est trop grand pour être reproduit en un seul cliché, il est filmé à partir de l'angle supérieur gauche, de gauche à droite, et de haut en bas, en prenant le nombre d'images nécessaire. Les diagrammes suivants illustrent la méthode.

ails  
du  
modifier  
une  
page

rata  
o

elure,  
à

32X

# EAST MIDDLESEX SCHOOLS.

S. P. GROAT, INSPECTOR.

## FOURTH AND FIFTH FORMS.

### ARITHMETIC.

1. Write as one number the following expression : Four hundred and seventy-nine millions five thousand and seven, and sixty-seven thousand two hundred and nine tenths of trillionths.
2. Find L. C. M. 2, 6, 5, 10, 8, 12, 15, 16, 18, 20, 26, 36, 40, 50.
3. Find value of  $18\frac{3}{4} + 6\frac{1}{4} - 9\frac{1}{4} + 11\frac{1}{2} - 16\frac{3}{8} + 14\frac{1}{8} + 1\frac{1}{2}$ .
4. Reduce 9134178 inches to miles, &c.
5. A farmer rented a farm for three years for \$300 per year. Supposing him to start farming with \$1000 worth of stock, and to have spent during the three years \$500 in implements, \$275 in hired help, and \$1000 in family expenses ; and to have sold during the same time  
1027 bush and 20 lbs. wheat @ \$1.17  $\frac{1}{2}$  bush.  
67 tons and 750 lbs. hay @ \$16  $\frac{1}{2}$  ton.  
360 bush. oats @  $33\frac{1}{2}$  cents  $\frac{1}{2}$  bush.  
97600 lbs. milk @  $7\frac{1}{2}$  cents for 10 lbs.  
and at the end of the time to have sold, stock \$1400, implements \$120. How much did he save ?
6. Define "ratio."
7. Give the rule for reduction ascending.

### GRAMMAR.

1. Name and describe the different kind of verbs.
2. Describe the different circumstances under which a noun is in the nominative case.
3. What is a participle ? Give all the active participles of the verb "to love."
4. Parse the words in italics in the following sentence :  
"No one who is in the least *interested* in education *can fail to notice*, that the Reading-Books used in High Schools are daily *becoming* more exclusively scientific in their contents."

### GEOGRAPHY.

1. Name the principal countries of Europe and their capitals.
2. Describe the course of each of the great rivers of Asia.
3. What is an isthmus ? Name the most remarkable.
4. Name the principal countries of North America, with their relative positions, and the most remarkable rivers flowing through each.

### HISTORY AND COMPOSITION.

1. Narrate the principal events in the history of Britain from A. D. 449 to A. D. 1066.
2. Name the Kings of England from A. D. 1066 to A. D. 1399, stating the house to which they belong.
3. Write a letter to me, stating your intention of competing for the prizes offered, and also telling me the studies in which you are engaged, and what books you have lately read, who were the authors of those books, the subjects of them, &c., &c.

