

**CIHM
Microfiche
Series
(Monographs)**

**ICMH
Collection de
microfiches
(monographies)**



Canadian Institute for Historical Microreproductions / Institut canadien de microreproductions historiques

© 1998

Technical and Bibliographic Notes / Notes techniques et bibliographiques

The Institute has attempted to obtain the best original copy available for filming. Features of this copy which may be bibliographically unique, which may alter any of the images in the reproduction, or which may significantly change the usual method of filming are checked below.

L'Institut a microfilmé le meilleur exemplaire qu'il lui a été possible de se procurer. Les détails de cet exemplaire qui sont peut-être uniques du point de vue bibliographique, qui peuvent modifier une image reproduite, ou qui peuvent exiger une modification dans la méthode normale de filmage sont indiqués ci-dessous.

- | | |
|---|--|
| <input type="checkbox"/> Coloured covers /
Couverture de couleur | <input type="checkbox"/> Coloured pages / Pages de couleur |
| <input type="checkbox"/> Covers damaged /
Couverture endommagée | <input type="checkbox"/> Pages damaged / Pages endommagées |
| <input type="checkbox"/> Covers restored and/or laminated /
Couverture restaurée et/ou pelliculée | <input checked="" type="checkbox"/> Pages restored and/or laminated /
Pages restaurées et/ou pelliculées |
| <input type="checkbox"/> Cover title missing / Le titre de couverture manque | <input checked="" type="checkbox"/> Pages discoloured, stained or foxed /
Pages décolorées, tachetées ou piquées |
| <input type="checkbox"/> Coloured maps / Cartes géographiques en couleur | <input type="checkbox"/> Pages detached / Pages détachées |
| <input type="checkbox"/> Coloured ink (i.e. other than blue or black) /
Encre de couleur (i.e. autre que bleue ou noire) | <input checked="" type="checkbox"/> Showthrough / Transparence |
| <input type="checkbox"/> Coloured plates and/or illustrations /
Planches et/ou illustrations en couleur | <input checked="" type="checkbox"/> Quality of print varies /
Qualité inégale de l'impression |
| <input type="checkbox"/> Bound with other material /
Relié avec d'autres documents | <input type="checkbox"/> Includes supplementary material /
Comprend du matériel supplémentaire |
| <input type="checkbox"/> Only edition available /
Seule édition disponible | <input type="checkbox"/> Pages wholly or partially obscured by errata slips,
tissues, etc., have been refilmed to ensure the best
possible image / Les pages totalement ou
partiellement obscurcies par un feuillet d'errata, une
pelure, etc., ont été filmées à nouveau de façon à
obtenir la meilleure image possible. |
| <input type="checkbox"/> Tight binding may cause shadows or distortion along
interior margin / La reliure serrée peut causer de
l'ombre ou de la distorsion le long de la marge
intérieure. | <input type="checkbox"/> Opposing pages with varying colouration or
discolourations are filmed twice to ensure the best
possible image / Les pages s'opposant ayant des
colorations variables ou des décolorations sont
filmées deux fois afin d'obtenir la meilleure image
possible. |
| <input type="checkbox"/> Blank leaves added during restorations may appear
within the text. Whenever possible, these have been
omitted from filming / Il se peut que certaines pages
blanches ajoutées lors d'une restauration
apparaissent dans le texte, mais, lorsque cela était
possible, ces pages n'ont pas été filmées. | |
| <input type="checkbox"/> Additional comments /
Commentaires supplémentaires: | |

This item is filmed at the reduction ratio checked below /
Ce document est filmé au taux de réduction indiqué ci-dessous.

10x	14x	18x	22x	26x	30x
<input type="checkbox"/>	<input type="checkbox"/>	<input type="checkbox"/>	<input checked="" type="checkbox"/>	<input type="checkbox"/>	<input type="checkbox"/>
12x	16x	20x	24x	28x	32x

The copy filmed here has been reproduced thanks to the generosity of:

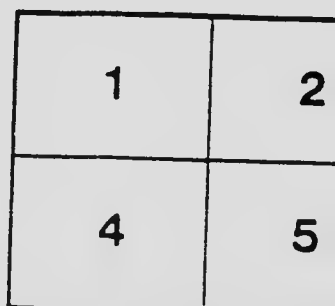
National Library of Canada

The images appearing here are the best quality possible considering the condition and legibility of the original copy and in keeping with the filming contract specifications.

Original copies in printed paper covers are filmed beginning with the front cover and ending on the last page with a printed or illustrated impression, or the back cover when appropriate. All other original copies are filmed beginning on the first page with a printed or illustrated impression, and ending on the last page with a printed or illustrated impression.

The last recorded frame on each microfiche shall contain the symbol \rightarrow (meaning "CONTINUED"), or the symbol ∇ (meaning "END"), whichever applies.

Maps, plates, charts, etc., may be filmed at different reduction ratios. Those too large to be entirely included in one exposure are filmed beginning in the upper left hand corner, left to right and top to bottom, as many frames as required. The following diagrams illustrate the method:



anks

L'exemplaire filmé fut reproduit grâce à la générosité de:

Bibliothèque nationale du Canada

Y
ty

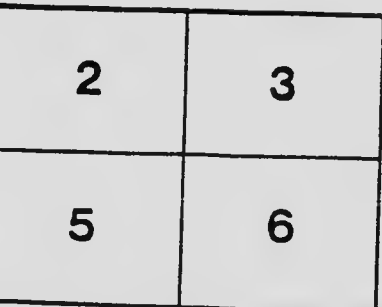
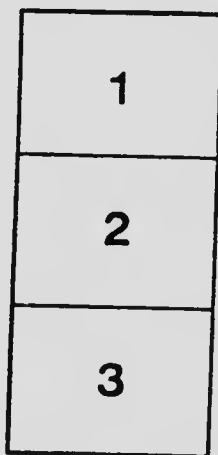
Les images suivantes ont été reproduites avec le plus grand soin, compte tenu de la condition et de la netteté de l'exemplaire filmé, et en conformité avec les conditions du contrat de filmage.

ned
es-
he
d

Les exemplaires originaux dont la couverture en papier est imprimée sont filmés en commençant par le premier plat et en terminant soit par la dernière page qui comporte une empreinte d'impression ou d'illustration, soit par le second plat, selon le cas. Tous les autres exemplaires originaux sont filmés en commençant par la première page qui comporte une empreinte d'impression ou d'illustration et en terminant par la dernière page qui comporte une telle empreinte.

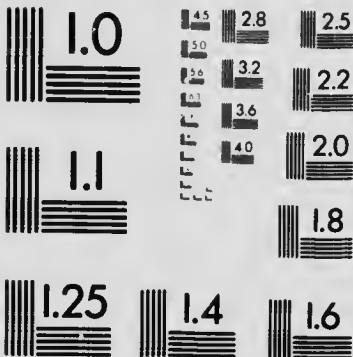
Un des symboles suivants apparaîtra sur la dernière image de chaque microfiche, selon le cas: le symbole → signifie "A SUIVRE", le symbole ∇ signifie "FIN".

Les cartes, planches, tableaux, etc., peuvent être filmés à des taux de réduction différents. Lorsque le document est trop grand pour être reproduit en un seul cliché, il est filmé à partir de l'angle supérieur gauche, de gauche à droite, et de haut en bas, en prenant le nombre d'images nécessaire. Les diagrammes suivants illustrent la méthode.



MICROCOPY RESOLUTION TEST CHART

(ANSI and ISO TEST CHART No. 2)



APPLIED IMAGE Inc

1653 East Main Street
Rochester, New York 14609 USA
(716) 482-0300 - Phone
(716) 288-5989 - Fax

The Liberal Party and the Navy

Do-Nothing-for-the-Empire their policy both in power and in opposition

What They Did When In Power

Here are some of the positions taken by the Liberal party under Sir Wilfrid Laurier on the question of Naval Aid:—

1

They promised, at the Imperial Conference of 1902 "to consider the naval side of defence". The promise was broken.

2

They refused to either contribute money or provide for the establishment of local naval defence when the question was before the Imperial Conference of 1907.

3

They refused to build a fleet unit for service on the Pacific when asked by the Admiralty in 1909.

4

In the House of Commons in 1909 they refused to agree to the Foster resolution affirming the principle which had been rejected by Sir Wilfrid Laurier at the Imperial Conference. An amendment withholding any real aid from Great Britain was proposed by Sir Wilfrid Laurier. Under pressure from Sir Robert Borden the Liberal leader agreed to important alterations in his amendment and the House adopted it. The responsibility of Canada in regard to Imperial naval defence was affirmed and speedy action was promised. Canada was to have a naval service along the lines suggested by the Admiralty in 1907, to co-operate with the Imperial navy and to be under one command with the Imperial navy in time of war.

5

On March 9, 1910, they voted down a resolution to submit a permanent naval policy to the people.

6

On the same day they voted down a proposal to submit a permanent policy to a plebiscite.

7

On December 1, 1910, they again refused to consult the people on a permanent policy.

8

They passed the Naval Service Act in 1910, providing for the building of a few small ships, which would not be placed at the disposal of the Admiralty in time of war unless the Government said so.

9

They voted in the Senate, in 1910, for a permanent policy without consulting the electors.

10

**The Laurier Government went out of office
without letting the contract for a single ship.**

(OVER)



AC901

A7

1914

no. 0033

p44x

1914

(116)

The Liberal Party and the Navy

Do-Nothing-for-the-Empire their policy in opposition

What They Have Done In Opposition

1.

In 1912-13 they attacked and killed the Borden Government bill for granting immediate and effective aid to the Empire by the building of three Canadian Dreadnoughts.

2

They voted against taking any action without consulting the electors i.e., at a general election.

3

On the same day (February 13, 1913) they voted to proceed at once with a permanent policy without consulting the electors.

4

They voted to spend \$35,000,000 without consulting the people.

5

They voted against a plebiscite.

6

They voted for two fleet units without consulting the electors.

7

They voted to appropriate the \$35,000,000 in a lump sum, to be applied over a period of years.

8

They voted to appropriate the same money by yearly vote.

9

They voted in the Senate in 1913 for a general election before even a temporary policy could be made operative.

**They have voted on every side of the question
and have succeeded in their ever-present purpose
of doing nothing for the Empire.**

Published by the Federal Press Agency, 47 Slater Street, Ottawa, Can., Central Publication and Distribution office for the Conservative party of Canada. Printed by the Modern Press, 80 O'Connor Street, Ottawa, Can.

(OVER)



