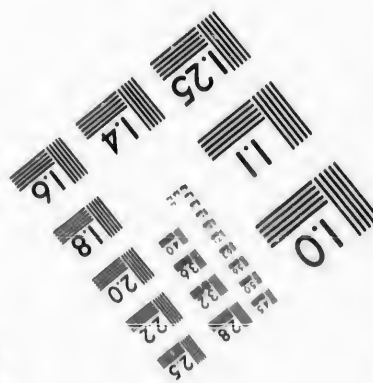
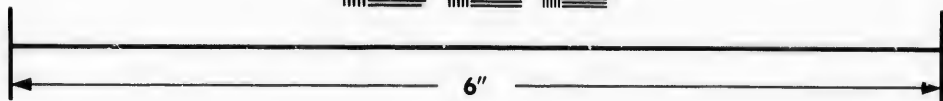
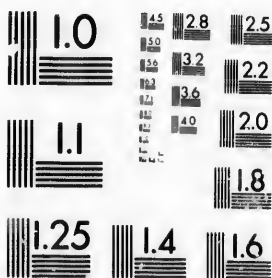


**IMAGE EVALUATION
TEST TARGET (MT-3)**



**Photographic
Sciences
Corporation**

23 WEST MAIN STREET
WEBSTER, N.Y. 14580
(716) 872-4503

14
16
18
20
22
25
28
32
36
40

**CIHM/ICMH
Microfiche
Series.**

**CIHM/ICMH
Collection de
microfiches.**



Canadian Institute for Historical Microreproductions / Institut canadien de microreproductions historiques

10
11
12
13

© 1987

Technical and Bibliographic Notes/Notes techniques et bibliographiques

The Institute has attempted to obtain the best original copy available for filming. Features of this copy which may be bibliographically unique, which may alter any of the images in the reproduction, or which may significantly change the usual method of filming, are checked below.

L'Institut a microfilmé le meilleur exemplaire qu'il lui a été possible de se procurer. Les détails de cet exemplaire qui sont peut-être uniques du point de vue bibliographique, qui peuvent modifier une image reproduite, ou qui peuvent exiger une modification dans la méthode normale de filmage sont indiqués ci-dessous.

- | | |
|--|--|
| <input type="checkbox"/> Coloured covers/
Couverture de couleur | <input type="checkbox"/> Coloured pages/
Pages de couleur |
| <input type="checkbox"/> Covers damaged/
Couverture endommagée | <input type="checkbox"/> Pages damaged/
Pages endommagées |
| <input type="checkbox"/> Covers restored and/or laminated/
Couverture restaurée et/ou pelliculée | <input type="checkbox"/> Pages restored and/or laminated/
Pages restaurées et/ou pelliculées |
| <input type="checkbox"/> Cover title missing/
Le titre de couverture manque | <input checked="" type="checkbox"/> Pages discoloured, stained or foxed/
Pages décolorées, tachetées ou piquées |
| <input type="checkbox"/> Coloured maps/
Cartes géographiques en couleur | <input type="checkbox"/> Pages detached/
Pages détachées |
| <input type="checkbox"/> Coloured ink (i.e. other than blue or black)/
Encre de couleur (i.e. autre que bleue ou noire) | <input type="checkbox"/> Showthrough/
Transparence |
| <input type="checkbox"/> Coloured plates and/or illustrations/
Planches et/ou illustrations en couleur | <input type="checkbox"/> Quality of print varies/
Qualité inégale de l'impression |
| <input type="checkbox"/> Bound with other material/
Relié avec d'autres documents | <input type="checkbox"/> Includes supplementary material/
Comprend du matériel supplémentaire |
| <input type="checkbox"/> Tight binding may cause shadows or distortion
along interior margin/
La reliure serrée peut causer de l'ombre ou de la
distorsion le long de la marge intérieure | <input type="checkbox"/> Only edition available/
Seule édition disponible |
| <input type="checkbox"/> Blank leaves added during restoration may
appear within the text. Whenever possible, these
have been omitted from filming/
Il se peut que certaines pages blanches ajoutées
lors d'une restauration apparaissent dans le texte,
mais, lorsque cela était possible, ces pages n'ont
pas été filmées. | <input type="checkbox"/> Pages wholly or partially obscured by errata
slips, tissues, etc., have been refilmed to
ensure the best possible image/
Les pages totalement ou partiellement
obscurcies par un feuillet d'errata, une pelure,
etc., ont été filmées à nouveau de façon à
obtenir la meilleure image possible. |
| <input checked="" type="checkbox"/> Additional comments:/ [Printed ephemera] [4] p.
Commentaires supplémentaires: | |

This item is filmed at the reduction ratio checked below/
Ce document est filmé au taux de réduction indiqué ci-dessous.

10X	14X	18X	22X	26X	30X
<input type="checkbox"/>	<input type="checkbox"/>	<input type="checkbox"/>	<input checked="" type="checkbox"/>	<input type="checkbox"/>	<input type="checkbox"/>
12X	16X	20X	24X	28X	32X

The copy filmed here has been reproduced thanks to the generosity of:

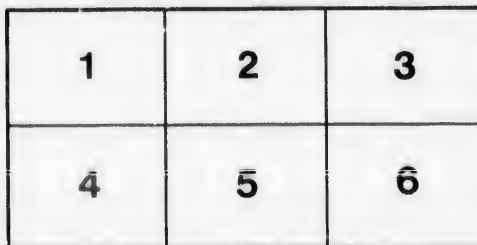
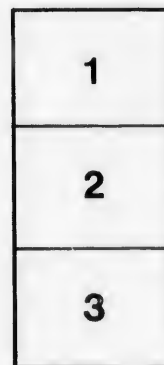
Ralph Pickard Bell Library
Mount Allison University

The images appearing here are the best quality possible considering the condition and legibility of the original copy and in keeping with the filming contract specifications.

Original copies in printed paper covers are filmed beginning with the front cover and ending on the last page with a printed or illustrated impression, or the back cover when appropriate. All other original copies are filmed beginning on the first page with a printed or illustrated impression, and ending on the last page with a printed or illustrated impression.

The last recorded frame on each microfiche shall contain the symbol → (meaning "CONTINUED"), or the symbol ∇ (meaning "END"), whichever applies.

Maps, plates, charts, etc., may be filmed at different reduction ratios. Those too large to be entirely included in one exposure are filmed beginning in the upper left hand corner, left to right and top to bottom, as many frames as required. The following diagrams illustrate the method:



L'exemplaire filmé fut reproduit grâce à la générosité de:

Ralph Pickard Bell Library
Mount Allison University

Les images suivantes ont été reproduites avec le plus grand soin, compte tenu de la condition et de la netteté de l'exemplaire filmé, et en conformité avec les conditions du contrat de filmage.

Les exemplaires originaux dont la couverture en papier est imprimée sont filmés en commençant par le premier plat et en terminant soit par la dernière page qui comporte une empreinte d'impression ou d'illustration, soit par le second plat, selon le cas. Tous les autres exemplaires originaux sont filmés en commençant par la première page qui comporte une empreinte d'impression ou d'illustration et en terminant par la dernière page qui comporte une telle empreinte.

Un des symboles suivants apparaîtra sur la dernière image de chaque microfiche, selon le cas: le symbole → signifie "A SUIVRE", le symbole ∇ signifie "FIN".

Les cartes, planches, tableaux, etc., peuvent être filmés à des taux de réduction différents. Lorsque le document est trop grand pour être reproduit en un seul cliché, il est filmé à partir de l'angle supérieur gauche, de gauche à droite, et de haut en bas, en prenant le nombre d'images nécessaire. Les diagrammes suivants illustrent la méthode.

errata
to

pelure,
n à



32X

A LYSTE

—OF—

Ye young^e Menn^e & Womenn^e whⁱ same do speak^e,
syng^e, & otherwis^e make Musick at y^e.

Great^e Concert^e

HELD IN Y^E

HALL OF MUSICK

—IN Y^E—

Great^e Schoole House^e, on y^e Mount of Allison^e,

—ON—

Friday Night, y^e 27th Day^e of March,

A. D. MDCCCXCVI.

Y^e sounding of y^e Musick will beginn^e at Earlie Candle Light, whⁱ same will be
Seven by y^e Clock^e of y^e Great^e Schoole.

Y^e Price to Enter will be One Shilling^e.

Y^e Monie raised will help^e y^e Y. W. C. A.

Y^e young^e menn^e and y^e young^e womenn^e will not be suffered to sit together.

Printed at y^e office of y^e Chignecto Poste, whⁱ same is on Bridge St., in y^e Towne of Sackville.

FOR

Pads, Papetries, and
Fine Stationery,

GO TO

GOODWIN'S,

Music Hall Block, - Sackville.

Millinery for Easter

NEW HATS and FLOWERS

Just Opened, and on Exhibition in our

NEW SHOW ROOM.

FRANK J. WILSON,

MUSIC HALL BLOCK.

Y^E FIRST PART^E.

- I. Two Part^o Piece (on y^e Hammering Machine) by two young^e womenn^o from y^e neighbouring^e Parish.
- II. Four Part^o Songe, Y^e Last^e Rose of Summer, by y^e four young^e menn^e who studie y^e musick with y^e young^e womenn^e.
- III. Y^e daughter of a Larg^e mann^e will play a piece on y^e fiddle.
- IV. Townsmann Edward's daughter Elizabeth will speak^e a Piece.
- V. One young^e womann^e will syng^e alone Annie Laurie, and all y^e young^e menn^e and young^e womenn^e syngers will keep^e tym^e with theyre voices in a buzzing sound.
- VI. Eight young^e womenn^e will play^e on y^e toothed instrument.

Between y^e first and y^e second^e Partes there will be a resting spell for y^e syngers to get theyre breathe.

Y^e Wise men^e from y^e Great^e Schooles will be sure to be present in y^e Hall of Musick; undue levitie or writings on paper will be mentioned from y^e desk^e Next^e Day^e Morning.

G. B. Chandler,

TICKET AGENT

**CANADIAN
PACIFIC
RAILWAY.**

MUSIC HALL BLOCK,

SACKVILLE, - N. B.

Sackville Photo. Studio.

The public are always welcome visitors. If you are interested in Photographs, run in and take a look around as often as you choose. Thursday afternoons and Saturday afternoons are reserved for the Ladies' College.

R. S. PRIDHAM.

March, 1896.

er

our

ON,

from

who

and

ound.

athe.

vitic or

dio.

e

n

a

e.

y

e

M.

'Sir Charles'

AND 'Yantic'

ARE THE

Leading Hats for Men.

C. PICKARD.

FOR THE BEST.....



FRUIT,
CHOCOLATES
AND CAKES,

GO TO

H. F. Pickard.

YE SECOND^d PART^e.

- I. Lauratia Newman will Play^e a one Part^e Piece on y^e Hammering Machine.
- II. Four young^e womenn^e and four young^e menn^e will be suffered to syng^e together Stryk^e y^e Cymbal. (This Piece has required much Practice.)
- III. One young^e womann^e will speak^e a piece about y^e syngers in a Meeting House.
- IV. Another young^e womann^e will syng^e Within a Mile of Edinboro Town.
- V. Perseverance Harts will play^e a piece on y^e Fiddle.
- VI. Charity Huckleberrie will syng^e Y^e Old Folkes at Home, and two young^e womenn^e will keep tym^e by picking y^e tryngs of theyre fiddles.
- VII. All y^e young^e menn^e and young^e womenn^e syngers, with y^e toothed instruments, fiddles, and y^e hammering machines, will make musick with Auld Lang Syne.
- VIII. Ye must all stand up and syng^e God Save y^e Queen.

Our Specialty

IS PERFUMES.

MILLOT'S.
GELLE FRERES.
ROGER & GALLET.
CROWN PERFUMERY CO.
BOURGEOIS & CIE.
LUNDBOURG'S ESSENCES, in Assorted
Odors and Styles.

MOORE'S DRUG STORE.

Save Money! How?

BY BUYING YOUR

Shade Blinds, Curtain Foles
and Trimmings at

FULTON'S.

The Best and Cheapest Line of BRASS
POLE TRIMMINGS ever shown in Sackville.

Trunks, Satchels, Club Bags,
Telescopes, etc.

550/11/3/2
P. 64

To ye Olde and Younge Womenne.

We want you people to come and visit us. Our Hat Trimmer and Bonnet Maker is coming to Town first of next week. Come in earlie and get your new Hat or Bonnet for Easter. We will make a show of our pretty FLOWERS, FEATHERS, LACES, and HEAD GEAR next week in one of our big windows.

We have just opened: PERRIN'S LACE KID GLOVES, 5 and 7 Hooks, in Black and Colors, NEW LACES and INSERTIONS, HAIR NETS, SIDE COMBS, BACK COMBS, and HAIR PINS; New BLOUSE WAISTS, New TIES, BOWS, SCARFS, BELTS, BELT BUCKLES and BELTING, at LOW PRICES.

GEO. E. FORD.

Ye names of ye menn^e and women^e syngers and players may be found on ye register of ye Great^e Schoole.


After ye synging that old acquaintance be not forgot, it is time that ye do eat doenuts and drinke hot coffee, w^{ch} same may be had for less than a shilling at ye reare end^e of ye Hall of Musick. Ye young^e menn^e will be suffered to eat with ye younge womenn^e.

All those who are so blest as to have good lungs and religious training are expected to stand and syng^e that our Good^e Queen^e may have much prosperitie; after that it is tym^e that ye may go home.

Ye young^e menn^e and younge^e womenn^e will depart decourously, as becometh them after they synge.

W. TURNER,

—DEALER IN—

All Kinds of 
Fine Foot Wear.

A Liberal Discount given to Students.

Groceries, Cakes,
Confectionery and Fruit.

ALWAYS FRESH.

LARGE ASSORTMENT OF
Boots and Shoes, China and Glassware.

P. HANSON,
Opposite Music Hall, - Sackville, N. B.

