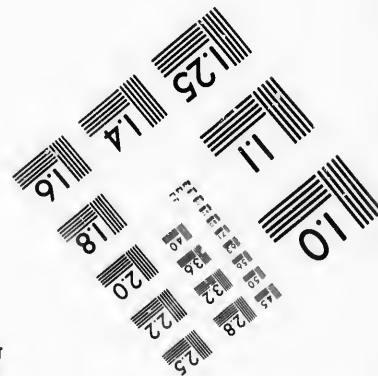
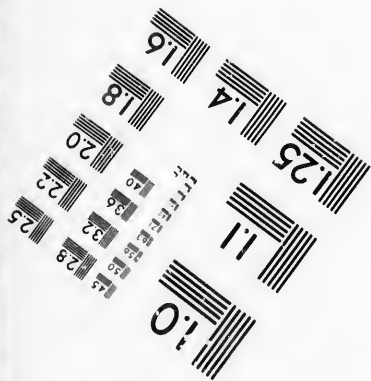
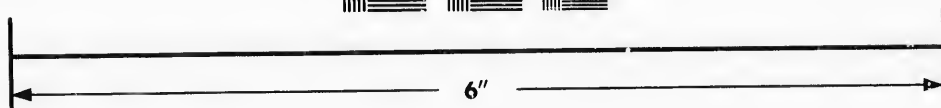
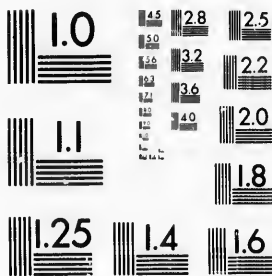


**IMAGE EVALUATION
TEST TARGET (MT-3)**



**Photographic
Sciences
Corporation**

23 WEST MAIN STREET
WEBSTER, N.Y. 14580
(716) 872-4503

14 28
32 25
36 22
40
48

**CIHM/ICMH
Microfiche
Series.**

**CIHM/ICMH
Collection de
microfiches.**



Canadian Institute for Historical Microreproductions / Institut canadien de microreproductions historiques

01
51

© 1987

Technical and Bibliographic Notes/Notes techniques et bibliographiques

The Institute has attempted to obtain the best original copy available for filming. Features of this copy which may be bibliographically unique, which may alter any of the images in the reproduction, or which may significantly change the usual method of filming, are checked below.

L'Institut a microfilmé le meilleur exemplaire qu'il lui a été possible de se procurer. Les détails de cet exemplaire qui sont peut-être uniques du point de vue bibliographique, qui peuvent modifier une image reproduite, ou qui peuvent exiger une modification dans la méthode normale de filmage sont indiqués ci-dessous.

- | | |
|--|--|
| <input type="checkbox"/> Coloured covers/
Couverture de couleur | <input type="checkbox"/> Coloured pages/
Pages de couleur |
| <input type="checkbox"/> Covers damaged/
Couverture endommagée | <input type="checkbox"/> Pages damaged/
Pages endommagées |
| <input type="checkbox"/> Covers restored and/or laminated/
Couverture restaurée et/ou pelliculée | <input type="checkbox"/> Pages restored and/or laminated/
Pages restaurées et/ou pelliculées |
| <input type="checkbox"/> Cover title missing/
Le titre de couverture manque | <input checked="" type="checkbox"/> Pages discoloured, stained or foxed/
Pages décolorées, tachetées ou piquées |
| <input type="checkbox"/> Coloured maps/
Cartes géographiques en couleur | <input type="checkbox"/> Pages detached/
Pages détachées |
| <input type="checkbox"/> Coloured ink (i.e. other than blue or black)/
Encre de couleur (i.e. autre que bleue ou noire) | <input checked="" type="checkbox"/> Showthrough/
Transparence |
| <input type="checkbox"/> Coloured plates and/or illustrations/
Planches et/ou illustrations en couleur | <input type="checkbox"/> Quality of print varies/
Qualité inégale de l'impression |
| <input type="checkbox"/> Bound with other material/
Relié avec d'autres documents | <input type="checkbox"/> Includes supplementary material/
Comprend du matériel supplémentaire |
| <input type="checkbox"/> Tight binding may cause shadows or distortion
along interior margin/
La reliure serrée peut causer de l'ombre ou de la
distorsion le long de la marge intérieure | <input type="checkbox"/> Only edition available/
Seule édition disponible |
| <input type="checkbox"/> Blank leaves added during restoration may
appear within the text. Whenever possible, these
have been omitted from filming/
Il se peut que certaines pages blanches ajoutées
lors d'une restauration apparaissent dans le texte,
mais, lorsque cela était possible, ces pages n'ont
pas été filmées. | <input type="checkbox"/> Pages wholly or partially obscured by errata
slips, tissues, etc., have been refilmed to
ensure the best possible image/
Les pages totalement ou partiellement
obscurcies par un feuillet d'errata, une pelure,
etc., ont été filmées à nouveau de façon à
obtenir la meilleure image possible. |
| <input checked="" type="checkbox"/> Additional comments: /
Commentaires supplémentaires: | [Printed ephemera] [2] p. |

This item is filmed at the reduction ratio checked below/
Ce document est filmé au taux de réduction indiqué ci-dessous.

10X	14X	18X	22X	26X	30X
<input type="checkbox"/>	<input type="checkbox"/>	<input checked="" type="checkbox"/>	<input type="checkbox"/>	<input type="checkbox"/>	<input type="checkbox"/>
12X	16X	20X	24X	28X	32X

The copy filmed here has been reproduced thanks to the generosity of:

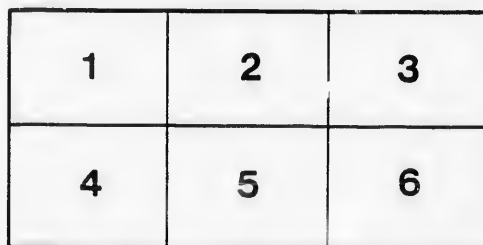
New Brunswick Museum
Saint John

The images appearing here are the best quality possible considering the condition and legibility of the original copy and in keeping with the filming contract specifications.

Original copies in printed paper covers are filmed beginning with the front cover and ending on the last page with a printed or illustrated impression, or the back cover when appropriate. All other original copies are filmed beginning on the first page with a printed or illustrated impression, and ending on the last page with a printed or illustrated impression.

The last recorded frame on each microfiche shall contain the symbol \rightarrow (meaning "CONTINUED"), or the symbol ∇ (meaning "END"), whichever applies.

Maps, plates, charts, etc., may be filmed at different reduction ratios. Those too large to be entirely included in one exposure are filmed beginning in the upper left hand corner, left to right and top to bottom, as many frames as required. The following diagrams illustrate the method:



L'exemplaire filmé fut reproduit grâce à la générosité de:

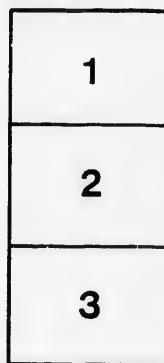
New Brunswick Museum
Saint John

Les images suivantes ont été reproduites avec le plus grand soin, compte tenu de la condition et de la netteté de l'exemplaire filmé, et en conformité avec les conditions du contrat de filmage.

Les exemplaires originaux dont la couverture en papier est imprimée sont filmés en commençant par le premier plat et en terminant soit par la dernière page qui comporte une empreinte d'impression ou d'illustration, soit par le second plat, selon le cas. Tous les autres exemplaires originaux sont filmés en commençant par la première page qui comporte une empreinte d'impression ou d'illustration et en terminant par la dernière page qui comporte une telle empreinte.

Un des symboles suivants apparaîtra sur la dernière image de chaque microfiche, selon le cas: le symbole \rightarrow signifie "A SUIVRE", le symbole ∇ signifie "FIN".

Les cartes, planches, tableaux, etc., peuvent être filmés à des taux de réduction différents. Lorsque le document est trop grand pour être reproduit en un seul cliché, il est filmé à partir de l'angle supérieur gauche, de gauche à droite, et de haut en bas, en prenant le nombre d'images nécessaire. Les diagrammes suivants illustrent la méthode.



ESTABLISHED 1850.

WOODSTOCK NURSERIES,

FRANKLIN SHARP, Proprietor.

—)++(—

Descriptive Catalogue.

—)++(—

Having purchased the Woodstock Nurseries from my father, F. P. Sharp, I wish to thank the former friends and customers who have placed confidence in the stock, and for the generous patronage bestowed in the past, and trust that it will still continue to receive your custom; and I assure you that it will be my constant aim to improve on the well tried methods of growing, shipping and delivering stock, so you may receive your trees in a good thrifty condition.

FRANKLIN SHARP.

WOODSTOCK, N. B.:
PRESS PRINT, QUEEN STREET,
1887.

APPLES.

NEW BRUNSWICK.—Large size, roundish, streaked with red and yellow; flesh whitish, juicy and sprightly sub-acid; ripening early in the fall; tree a vigorous grower, having fine, large foliage, bearing abundantly and when very young; succeeds in nearly all sections of the country, specially adapted to the extreme north, bearing continuously from year to year.

WEALTHY.—Medium size, whitish yellow shaded red and rich deep crimson; flesh white stained with red, tender, juicy and sub acid; extremely hardy; a good grower and abundant bearer. Season, from November to January.

GIDEON.—It was raised from seed of a seedling Crab by the veteran fruit grower, Peter M. Gideon, of Excelsior, Minn., and pronounced by him "as hardy as a native oak." The fruit is of a rich, golden yellow, with a very clear skin, handsome rosy blush, juicy and fine with an excellent sub acid flavor; ranks well as an eating apple, and its handsome, showy appearance makes it a most tempting fruit. While its crab origin seems to be thoroughly developed in the hardy, rugged character of the tree, there is no trace of this in the fruit, which in every respect is a fine *eating apple*. October to December.

ALEXANDER.—Large size, deep red and crimson; flesh yellowish white, crisp, tender, with pleasant flavor. This is a very handsome Russian apple, and like all others coming from that country valuable on account of its hardiness, being suited to the extreme north. Season, from October to January.

PEACH (Irish Peach).—Large size, round or a little flattened; skin yellowish green with small dots in the shade and streaked with beautiful brownish red in the sun; flesh tender, juicy and well flavored. The great beauty and good quality of the fruit and the hardiness of the tree render it desirable in high latitudes. Ripens through autumn.

TETOFSKY.—Medium size, nearly round; flesh white, very juicy and acid, with a pleasant aromatic flavor; a handsome Russian apple, being fully as hardy as the New Brunswick, and producing regularly abundant crops of beautiful fruit. Succeeds over a large section of country, and is especially desirable in high latitudes, where many other fine varieties fail by reason of extreme cold.

SCOTT'S WINTER.—A valuable variety, which originated in Vermont, and is one of our hardiest and most profitable kinds. Tree a thrifty grower and an early and profuse bearer. Fruit medium size, roundish, surface deep red and light red in blotches and streaks; flesh yellowish white, slightly reddened near the skin; rather acid and good in quality. Keeps till June.

FAMEUSE.—Medium
very white, tender, crisp;
hardy and a regular bearer.

YELLOW TRAIL
Department of Agriculture
an unusually early bearer
clear white at first, turning
it extensively say that
weeks ahead of the Red

ST. LAWRENCE
with crimson; flesh white

HAAS.—Large size
mottled with light red,
little stained; next the season
to March.

RED ASTRACA
white, crisp, with a nice

FISHER PIPPIN
suited to our rigorous climate
red tinge on sunny side
juicy crisp, with a slight
season December to March

MAGOG RED
and vigorous, and of good
roundish, skin light yellow
over half the fruit. First
March.

TOLMAN SWEET
sweet. In season from

KENNEBEC SWEET
vigorous and productive;

BLUE PEARMAIN
red in broken stripes of
January to March.

FAMEUSE.—Medium size, deep crimson, roundish, somewhat flattened; flesh very white, tender, crisp and juicy, with a slight perfume. Tree a good grower, hardy and a regular bearer of handsome fruit. October to December.

YELLOW TRANSPARENT.—A new Russian variety imported in 1870 by Department of Agriculture at Washington. Tree hardy and a strong grower and unusually early bearer. Fruit pale yellow; good size and good quality; skin greenish white at first, turning to a pale yellow when ripe. Parties who have fruited extensively say that it ripens earlier than any other variety, being ten days or two weeks ahead of the Red Astracan.

ST. LAWRENCE.—Large size, round or oblate, yellowish striped and splashed with crimson; flesh white, crisp, juicy, tender and of good quality.

HAAS.—Large size, somewhat roundish, conical, light in color, splashed and dotted with light red, with many dots and dark centers; flesh white but often a little stained next the skin; an apple of the best quality. In season from November to March.

RED ASTRACAN.—Large and handsome, crimson with a white bloom; flesh white, crisp, with a nice spicy flavor. Tree hardy, and a good grower.

FISHER PIPPIN.—A new variety originated here in Woodstock and specially adapted to our rigorous climate, tree being hardy and productive. Fruit medium size, greenish tinged on sunny side, green in the fall and yellowish in the winter; flesh tender, crisp, with a slightly sub acid flavor, and when not fully ripe quite acid. Season from December to March.

MAGOG RED STREAK.—A variety of extreme hardiness; tree very thrifty and vigorous, and of great productiveness; is a very long keeper. Fruit medium, roundish, skin light yellow, shaded and faintly striped and splashed with light red over half the fruit. Flesh yellowish, moderately juicy, mild sub acid. December to March.

TOLMAN SWEET.—A vigorous and productive tree; flesh firm, rich and sweet. In season from November till April.

KENNEBEC SWEET.—Tree rather more hardy than Tolman Sweet; vigorous and productive; a first-class sweet apple. Season, September.

BLUE PEARMAIN.—Very large, roundish, inclining to oblong; dark purplish red in broken stripes on light ground; flesh yellowish; mild sub acid. Season January to March.

Sharp papers; Shelf 22, Box 3

16-4

PLUMS.

MOOER'S ARCTIC.—This very remarkable and wonderful plum originated with Mr. A. F. Mooer, of Ashland, Aroostock Co., Me., seventy miles northward from Woodstock, where unprotected and exposed to intense cold it has for many years borne enormous crops. It is the most prolific of all plums, and in earliness of ripening exceeds all others. Fruit grows in large clusters; large, dark purple, thin pit small, flavor very fine both for preserving and for dessert. Season, last of August to middle of September.

IMPERIAL GAGE.—One of the most excellent and productive of all plums. Rather large; green, with yellow when ripe; flesh juicy, rich and delicious; a strong and vigorous grower. August to middle of September.

McLAUGHLAN.—Large, greenish yellow, sugary and luscious, with a rich flavor. A first rate variety; very hardy, vigorous and productive. September.

WHITE MAGNUM BONUM.—Very large and beautiful, a little coarse, but excellent for cooking; vigorous and productive. September.

COLUMBIA.—Fruit very large and showy, usually borne in clusters; dark purple with a rich bloom; of good quality, fine flesh and rich flavor. One of our largest and most handsome plums, and a fine fruit for preserving. September to October.

Sharp Papers, S.

onderful plum originated
enty miles northwest of
d it has for many years
, and in earliness of bear-
e, dark purple, thin skin,
rt. Season, last of Aug-

productive of all plums.
ch and delicious; a strong,

and luscious, with a fine
ductive September.

autifu!, a little coarse, but
er.

borne in clusters; color
and rich flavor. One of
preserving. September

CRABS.

HYSLOP.—Fruit large, produced in clusters ovate, dark rich red covered with a thick blue bloom; flesh inclining to yellow; sub-acid; good for cider and other purposes. Very popular on account of its large size, beauty and hardiness.

TRANSCENDENT.—Medium to large size, roundish oblong; golden yellow with a rich crimson red cheek covered with a delicate white bloom; at ripeness the red nearly covers the whole surface. Flesh yellow, crisp and juicy, when fresh is pleasant and agreeable. In season early in autumn.

SPECIAL LIST.

BLOOM.—This apple, produced by hybridizing and tested by us in our orchard, makes a valuable addition to our list of hardy apples, supplying a long season, coming in between our fall and winter varieties. Fruit medium size and round, colored, generally a very dark red on sunny side, lighter red in the shade. Firm, crisp and juicy; sub acid.

MUNRO SWEET, No. 1.—This apple, like the Bloom, was produced by hybridizing and tested here. A hardy tree of thrifty growth, bearing abundantly. Medium size, shaded with rich deep red; flesh white, juicy and a fine sweet flavor. Season, September to October.

MUNRO SWEET, No. 2.—One of our new hybrids, thrifty and hardy, fruit of medium size, deep red and light red in blotches and streaks; flesh white, sweet, but rather dry. Season, November to January. A good keeper.

, dark rich red covered with
; good for cider and culinary
beauty and hardiness.

ndish oblong; golden yellow
white bloom; at ripening the
crisp and, when fully ripe,

ST.

and tested by us in our orchard,
supplying a long felt want,
it medium size and highly col-
ored in the shade. Flesh firm,

e Bloom, was propagated by
growth, bearing abundantly.
juicy and a fine sweet. Season

brids, thrifty and hardy; fruit
streaks; flesh white, firm and
. A good keeper.

