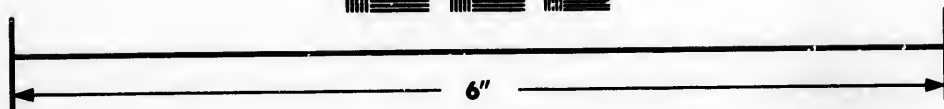
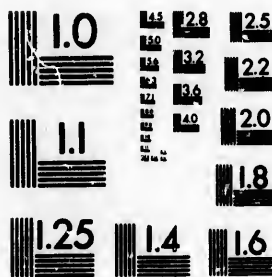


**IMAGE EVALUATION
TEST TARGET (MT-3)**



**Photographic
Sciences
Corporation**

23 WEST MAIN STREET
WEBSTER, N.Y. 14590
(716) 872-4303

1.5 12.8 12.5
1.8 13.2 12.2
2.0

**CIHM/ICMH
Microfiche
Series.**

**CIHM/ICMH
Collection de
microfiches.**



Canadian Institute for Historical Microreproductions / institut canadien de microreproductions historiques

10
01

© 1985

Technical and Bibliographic Notes/Notes techniques et bibliographiques

The Institute has attempted to obtain the best original copy available for filming. Features of this copy which may be bibliographically unique, which may alter any of the images in the reproduction, or which may significantly change the usual method of filming, are checked below.

L'Institut a microfilmé le meilleur exemplaire qu'il lui a été possible de se procurer. Les détails de cet exemplaire qui sont peut-être uniques du point de vue bibliographique, qui peuvent modifier une image reproduite, ou qui peuvent exiger une modification dans la méthode normale de filmage sont indiqués ci-dessous.

- Coloured covers/
Couverture de couleur
- Covers damaged/
Couverture endommagée
- Covers restored and/or laminated/
Couverture restaurée et/ou pelliculée
- Cover title missing/
Le titre de couverture manque
- Coloured maps/
Cartes géographiques en couleur
- Coloured ink (i.e. other than blue or black)/
Encre de couleur (i.e. autre que bleue ou noire)
- Coloured plates and/or illustrations/
Planches et/ou illustrations en couleur
- Bound with other material/
Relié avec d'autres documents
- Tight binding may cause shadows or distortion along interior margin/
La reliure serrée peut causer de l'ombre ou de la distortion le long de la marge intérieure
- Blank leaves added during restoration may appear within the text. Whenever possible, these have been omitted from filming/
Il se peut que certaines pages blanches ajoutées lors d'une restauration apparaissent dans le texte, mais, lorsque cela était possible, ces pages n'ont pas été filmées.
- Additional comments:/
Commentaires supplémentaires:

- Coloured pages/
Pages de couleur
- Pages damaged/
Pages endommagées
- Pages restored and/or laminated/
Pages restaurées et/ou pelliculées
- Pages discoloured, stained or foxed/
Pages décolorées, tachetées ou piquées
- Pages detached/
Pages détachées
- Showthrough/
Transparence
- Quality of print varies/
Qualité inégale de l'impression
- Includes supplementary material/
Comprend du matériel supplémentaire
- Only edition available/
Seule édition disponible
- Pages wholly or partially obscured by errata slips, tissues, etc., have been refilmed to ensure the best possible image/
Les pages totalement ou partiellement obscurcies par un feuillet d'errata, une pelure, etc., ont été filmées à nouveau de façon à obtenir la meilleure image possible.

This item is filmed at the reduction ratio checked below/
Ce document est filmé au taux de réduction indiqué ci-dessous.

10X	14X	18X	22X	26X	30X
<input type="checkbox"/>	<input type="checkbox"/>	<input type="checkbox"/>	<input checked="" type="checkbox"/>	<input type="checkbox"/>	<input type="checkbox"/>
12X	16X	20X	24X	28X	32X

The copy filmed here has been reproduced thanks to the generosity of:

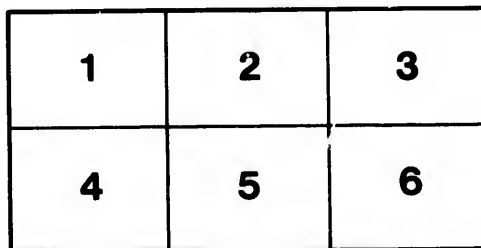
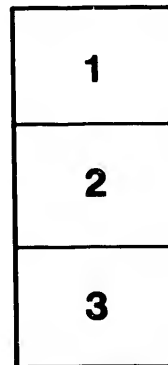
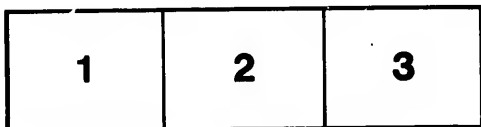
Library of the Public
Archives of Canada

The images appearing here are the best quality possible considering the condition and legibility of the original copy and in keeping with the filming contract specifications.

Original copies in printed paper covers are filmed beginning with the front cover and ending on the last page with a printed or illustrated impression, or the back cover when appropriate. All other original copies are filmed beginning on the first page with a printed or illustrated impression, and ending on the last page with a printed or illustrated impression.

The last recorded frame on each microfiche shall contain the symbol \rightarrow (meaning "CONTINUED"), or the symbol ∇ (meaning "END"), whichever applies.

Maps, plates, charts, etc., may be filmed at different reduction ratios. Those too large to be entirely included in one exposure are filmed beginning in the upper left hand corner, left to right and top to bottom, as many frames as required. The following diagrams illustrate the method:



L'exemplaire filmé fut reproduit grâce à la générosité de:

La bibliothèque des Archives
publiques du Canada

Les images suivantes ont été reproduites avec le plus grand soin, compte tenu de la condition et de la netteté de l'exemplaire filmé, et en conformité avec les conditions du contrat de filmage.

Les exemplaires originaux dont la couverture en papier est imprimée sont filmés en commençant par le premier plat et en terminant soit par la dernière page qui comporte une empreinte d'impression ou d'illustration, soit par le second plat, selon le cas. Tous les autres exemplaires originaux sont filmés en commençant par la première page qui comporte une empreinte d'impression ou d'illustration et en terminant par la dernière page qui comporte une telle empreinte.

Un des symboles suivants apparaîtra sur la dernière image de chaque microfiche, selon le cas: le symbole \rightarrow signifie "A SUIVRE", le symbole ∇ signifie "FIN".

Les cartes, planches, tableaux, etc., peuvent être filmés à des taux de réduction différents. Lorsque le document est trop grand pour être reproduit en un seul cliché, il est filmé à partir de l'angle supérieur gauche, de gauche à droite, et de haut en bas, en prenant le nombre d'images nécessaire. Les diagrammes suivants illustrent la méthode.



1

METEOROLOGICAL
JOURNAL AND REPORT

RELATIVE TO THE
CURRENTS, CLIMATE, AND NAVIGATION

OF THAT PORTION OF THE
LOWER ST. LAWRENCE

FORMING
THE STRAIT OF BELLE-ISLE.

—
SECOND EDITION.
—

~~~~~  
COMPILED BY CAPT. D. VAUGHAN.  
~~~~~

QUEBEC:
PRINTED BY JOSEPH DARVEAU, No. 8 MOUNTAIN HILL.

METEOROLOGICAL

JOURNAL AND REPORT

OF THE

ARMY AND NAVY OBSERVATORIES

OF THE UNITED STATES

FOR THE YEAR 1880

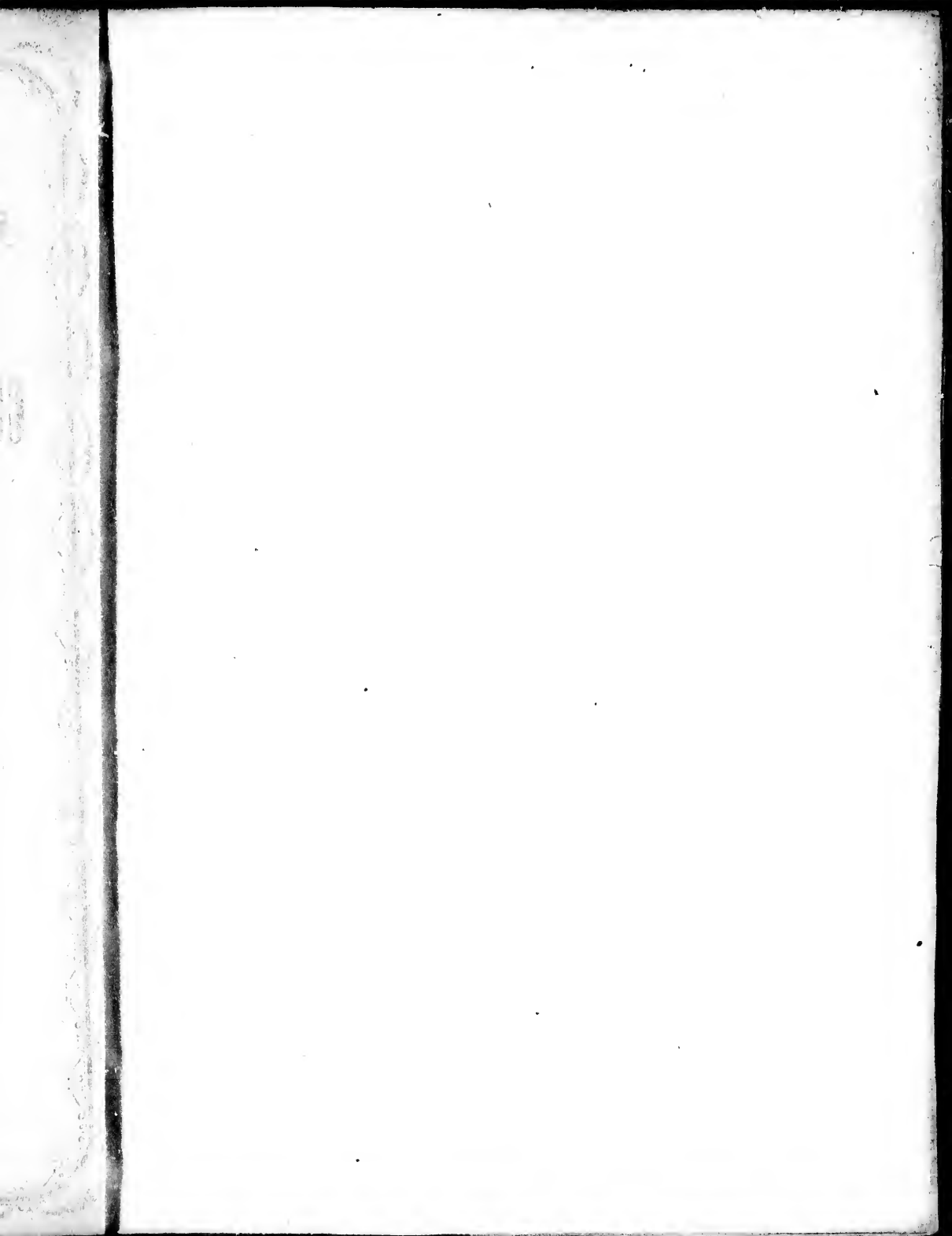
1881

THE OFFICE OF THE SECRETARY OF WAR

WASHINGTON

PRINTED BY THE GOVERNMENT PRINTING OFFICE

1881





Length from 2000 to 2500 feet extreme height from 550 to 360 feet



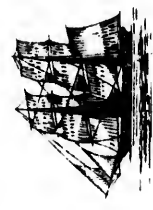
NORTH E. END OF NEWFOUNDLAND

Course shown for the S.S. *North Briton* in 1853



North Briton S.S.

Ship returning from passing a letter on board of *Steam Ship*



Length 500 feet height 200 feet



St. Charles



The Montreal (then S.S. North Briton) Cap. Jones, passing the Belle Isle Light house outward bound at 7 A.M. on the 12th October 1853. Showing his Numbers. The other vessels were returning from the Labrador Coast after their summer fishing. As also some of the Icebergs that were in the Strait at the time.

The Montreal (Ocean S.S. North Britton, Cap. Jones, passing the Belle Isle Light house outward bound at 7 A.M. on the 12th October 1858. Snowing has now begun. The weather here is returning from the Labrador coast after their summer fishing. As also some of the icebergs that were in the Strait at the time.

METEOROLOGICAL

JOURNAL AND REPORT

RELATIVE TO THE

CURRENTS, CLIMATE, AND NAVIGATION

OF THAT PORTION OF THE

LOWER ST. LAWRENCE

FORMING

THE STRAIT OF BELLE-ISLE.

—
SECOND EDITION.
—

~~~~~  
COMPILED BY CAPT. D. VAUGHAN.  
~~~~~

QUEBEC:

PRINTED BY JOSEPH DARVEAU, No. 8 MOUNTAIN HILL.

1850

1851

G
P
C
Q
b
A
w
in

ri
si
u
as
a
o
o

in
re
B

p
fr
R
B
v
th
v
C
c
a
p
in
o
e

a
J

u
r
e
s
i

r
r
t

P R E F A C E .

The establishment of direct steam communication between Canada and Great Britain greatly accelerated the improvement of the St. Lawrence navigation. Previous to 1854, the first year of the subsidising of the Montreal Ocean Steamship Company there were only eight lighthouses from the entrance of the Gulf to Quebec, while now there are sixteen, besides a large increase in the number of buoys to mark the dangerous shoals and rocks which fill the Gulf and River. Amongst the lighthouses established by the government of this Country, none was more required, and none has proved of more real value to the commercial interests of the Province, than that which forms the subject of the following pages.

Before the publication of Captain Bayfields valuable report on the Gulf and river St. Lawrence, issued in London in 1843, by order of the Lords Commissioners of the Admiralty, what was known of Belle Isle was extremely vague and unsatisfactory. Even that work threw little more light on the subject, inasmuch as the compiler acknowledges to have had no opportunity of surveying it, and states unreservedly that his report of it was derived from the statements of "Canadian and American fishermen who had chanced to visit it, and from his own observation at a distance."

Notwithstanding that our author claims to give the first really reliable information concerning this island, it is but fair to add that five years actual residence on the spot only tends to confirm the general accuracy of Captain Bayfields observations and conclusions.

In 1860 that portion of this report contained on the first ten pages was published by Captain Vaughan and met with a reception, in the scientific world, far beyond his most sanguine expectations. The then honorary directors of the Royal Observatory of Liverpool presented our author with a valuable marine Barometer and Sykes' Thermometer, "as a mark of their appreciation of his valuable contribution to meteorological science." Capt. Orlebar, R.N., commanding the Admiralty surveying schooner "Guluare" also forwarded him various valuable charts; while the commanders of the Montreal Ocean Steamship Company's vessels, almost without exception, have from time to time communicated in most flattering terms their indebtedness to Capt. Vaughan for the assistance they have frequently derived from his Journal and Reports, in their passage of the Strait. Gratified with such valuable testimony of the appreciation in which his humble contribution to meteorological science is held, and in order to meet the numerous applications for copies of his first edition, now entirely exhausted, he ventures to place a *second* before the public.

This, it is to be hoped, will be found more systematically arranged, and better adapted for meteorological conclusions, as it includes Capt. Vaughan's Journal for a period of over five years.

In addition to his observations on the currents of the Strait of Belle Isle—the unerring indications of the marine Barometer, and its consequent utility to nautical men, and the necessity for a larger use of Bellbuoys and the best and most economical mode of placing them—there are also appended two lithographic cuts shewing the usual position and dimensions of the icebergs which are to be seen in the Strait almost all the year round.

The author is aware that to the general reader the contents of his pamphlet may not prove very attractive, but to the student of meteorological science, and more especially to the masters of vessels sailing to the St. Lawrence he trusts they will be of some slight utility and value—if only for occasional reference.

THE EDITOR.

PLATE

PLATE

CAPTAIN VAUGHAN'S REPORT

ON THE

CURRENTS

OF THE

STRAIT OF BELLEISLE.

BELLEISLE, May 1st, 1860.

Remarks on the winds, currents, ice and ice-bergs, fogs, &c., in the strait.

The currents in the strait and coast are very irregular, more particularly to the south-west of this island, and along the Newfoundland coast, and much influenced by the winds.

There is a constant current running down the middle of the strait, from Forteau Light House on the west end of this island, and setting out in an easterly, and east by south direction from the light house to the sea, carrying with it out of the strait, the greater portion of the icebergs. This current is much stronger from the 1st of April to the middle of July, than at any other season of the year; and this must be owing to the great quantity of water from the numerous rivers along the North Shore that set down into the strait. In the spring of the year, this current runs out of the strait from two and a half to three knots an hour.

When the ice commences to break up in the spring, it takes from three to four days to clear the field ice out of the strait, with the wind from the west blowing a smart top-gallant breeze. Should the wind be from the east, or from any of the points having easting in them, with a strong breeze for a day or two, the ice will be perceived stationary, but with no inward set of the current up the middle of the strait.

At the east end of the island there is a bank laying off, bearing N.E. between two and three miles, with from five to seven fathoms of water on it, and three small rocks—two of them from six to eight feet above water. I have been told lately, by fishermen from Quirpon Harbour, that there is a portion of this bank which has only two and a half fathoms of water on it. The current sets in from the N.E. very strong, and divides on the bank and the east end of this Island, and a portion of it sets across to the southward, and along the south side of the island until it meets the downward current at the S.W. point where the light-house stands. There are two ripples, one from the bank, and the other from east end of the Island, which are very perceptible at times, in calm weather, and more so with a fresh breeze. These ripples run fully three miles to the south. Vessels making for the strait coming in from sea, in thick weather, will very often notice these ripples when they cannot see the island, and masters of vessels may not know the cause of them unless well acquainted. There are no other ripples round the island worthy of notice.

In many instances the sea breaks on this bank, and in the finest weather, with not an air of wind out of the heavens, I have seen six or seven seas which would founder a large vessel, rise up to a fearful height and break; in a few minutes after the sea became quite smooth for the remaining part of the day. The fishermen tell me that when the sea rises and breaks in this way, it is generally before a gale of wind from the eastward; and this statement is correct, for I have seen it and taken notice of it myself. There is deep water between this bank and the island.

The current to the north of this island, and along the north shore, sets in from the N.E., about two knots in the spring and summer months, and is much stronger in the fall. It is seldom there is any current setting out of the strait to the north of the Island, in the middle between this and the Labrador coast, unless it is when the wind is strong from the west, for a day or two, and then it is scarcely perceptible unless close in shore. The current, at high water, sets out of the strait for about four hours, and extends four miles off the land. In fine weather I can see from here the different sets of the currents by the icebergs, as the large ones generally ground, and all the smaller ones are floating about with the currents.

The greater portion of the icebergs pass into the strait to the north of this Island, and nearly all pass out to sea to the southward of the Land with the downward currents and westerly winds; many of them ground on the different bank and remain the greater part of the summer. The strait is mostly clear of these in the fall and during the winter months. Some winters a few may remain aground; and those that do, increase to a considerable height with the heavy falls of snow and sleet. The latter generally follow after snow storms, and often cause icebergs to increase as much as from 40 to 50 feet in height during the winter.

The greater number of them ground between this Island and the Island of Quirpon, more than any other part of the strait, during the spring of the year. I have also noticed some of them aground on a bank, outside in the offing, from twenty to twenty-five miles from here. This bank seems from here, to cross from Cape St. Louis about south. Several of them ground on a bank abreast of Red Bay, about five miles from the north shore, and run down in a parallel line with the north side of the Island, to a shoal water bank that lies off about three or four miles. The fishermen inform me that there are only five or six fathoms on some parts of the bank; it lies about N. from Lark Island. I have seen the sea breaking upon this bank on two different occasions, and it was always during fine weather. One day in particular, there was not an air of wind, when six or seven seas arose, twice in the course of an hour, and broke. It is a sure sign of easterly wind when the sea is seen breaking on these banks. It is on the banks I have mentioned that most of the icebergs ground; and masters of vessels should keep a good look out when within or about these banks in thick weather, and more especially in the spring of the year, when they are most numerous. The large ones that ground remain most of the summer, until they get reduced by the heat of the sun and the wash of the sea.

They continue drifting into the strait about the first week of April, and those that pass to the southward of the east end of the Island, seldom get further than abreast of the light-house where they meet the downward current which sets a great many of them across to the island of Quirpon, where most of them ground and remain for months. On the 26th day of May 1857, there were thirty six icebergs in the strait, being the greatest number that was seen at any time that summer. The same year the ice was sufficiently clear for vessels to pass through on the 9th of April. In the spring of 1858, there were, on the thirtieth day of May, four hundred and ninety six icebergs in the strait and around the Island. Several of them were as high as Cape Bald in the Island of Quirpon, and the smallest were fully 60 feet above the level of the sea! It was the 10th of June before the first vessel could pass through the strait. In 1859 there were, on the 6th day of May, two hundred and ninety-six icebergs visible from here, and the field ice was sufficiently clear for vessels to pass through the strait on the 12th of May. During the winters of these years, only two icebergs remained in the strait. I have also remarked that should the winds be—during one third of the month of April, in the latter part—from the west, or from points having westing in them, the strait would be clear of field ice for vessels to pass through in the first week in May, if not before, as was the case in the spring of 1857.

It is not the ice which makes in the strait during the winter that blocks it up in the spring,—it is field or heavy packed ice driven in from Davis' Strait, by the N.E. and N. winds, with the constant current setting in from there. The ice from Davis' Straits is also much heavier. The ice which makes in the Strait of Belleisle during the winter generally breaks up about the end of March, and the strait is clear for some days before the ice sets in from Davis' Straits. But, if during the spring, the prevailing wind is from the west, or from points having westing in them—in the month of April—it will keep the ice out from blocking up the strait.

The fogs are more prevalent with the winds from the east, south-east, and round to the south-west. It is seldom there are any fogs with the wind from the N. or from any points having northing in them, and when there is fog with those winds they do not last long. The low dry fogs which are the most prevalent in the spring and summer months, from the 1st May to the end of August, rise from the water and around the icebergs. The season that the icebergs are most numerous, the more prevalent the low dry fogs are; and they are of longer duration than the wet fogs, which are generally with the wind from the east, southeast and south. Those winds are mostly attended with rain and fog, and extend all over the strait.

In many instances during these low fogs, the high land on the North Shore, and the tops of icebergs can be seen from here, as also the mastsheads of vessels when the fog is quite thick on deck. When seen in this way, they will appear to be very close when they are often fully ten or twelve miles off. Very often during the prevalence of the low fogs, I have seen the high land on the north shore, over them; it has then appeared so close that it might be taken for a part of Island. It is precisely the same with the icebergs; they seem as if under the cliffs when fully twelve miles distant.

During half the time of the prevalence of these low fogs it is clear along the North shore for some miles on, with a fresh breeze generally off the land, when quite thick up the middle of the strait and along the Newfoundland coast. Masters of vessels when in those fogs in the middle of the strait and to the southward of this island, with a light wind or becalmed during the summer

months—may think the fog extends all over the strait, but such is not the case, for I have seen them frequently from here as I have stated. And in many instances, I have seen vessels sailing along the north shore when it was foggy, and calm weather up the middle of the strait, and to southward of this island.

From what I have seen of those fogs on this coast, these four years that I have been on the island, I have every reason to think that the fogs which are so frequent on the banks of Newfoundland, are partly caused by the immense number of icebergs, and the great quantity of cold water that sets out from here and Davis' Straits to the eastward—meeting the warm water from the Gulf stream on the banks, must certainly in a great measure, be the cause of the fogs in that part.

I have frequently noticed, for days, in warm weather, when the wind is light from the south-east and south; the fog coming in from sea along the Newfoundland coast with the current that sets in from the S.W., up as far as Cape Norman, where it meets the downward current setting out of the straits. In the same way when the wind is from the west for a day or two, I have seen the fog coming down the middle of the strait with the current; and not extending into the N. shore.

The warm water coming in from the Gulf and River, and mixing with the cold water and icebergs in the strait, is, in my belief, one of the causes of those fogs in calm weather, that are in and around the Island, in the summer months.

It is seldom there are any fogs in the fall. I consider November the safest month in the year, for vessels to pass through the strait. There are but few gales of wind, but few icebergs, and clear weather. In that month, the wind is generally from the north. The heaviest gales are from the 15th September to the 15th or 20th of October; and in the summer months the heaviest wind is in or about the longest day, from the middle of June to the 10th July; and in all seasons generally, the gales are up or down the Strait. It is very seldom there are any heavy gales from the south at any season of the year.

In thick weather with the wind from the westward, vessels making for the strait, coming in from sea, should get the north shore aboard, and pass to the north of this Island; they would have the current nearly all the time in their favor, and less fogs, with the wind at night mostly off the land. I allude more particularly to sailing vessels.

This island is frequently capped with fog in the summer months when perfectly clear on the water around it and in the straits, so that, at night, it appears like a white cloud. In a similar way, the fog very often lies around the icebergs. The fogs that cap this island rise, in warm weather, from the number of lakes on it. There are upwards of fifty of them, with deep water in all; those I have sounded, I found to be from five to fifteen fathoms of water.

I remarked, when the Aurora Borealis is seen at night, on this coast, that strong westerly wind follows for three or four days. I have also seen since I have been here, the phenomenon of the Aurora in the fall and winter months, at times extend over all the horizon, and in shape like a round tent, with the different shades of red, and with a fringe-like appearance of all colors at the bottom; and when the different shades are passing and repassing each other, I have noticed a hissing noise. It is generally during fine weather that this phenomenon is visible, and the reflection from it on the ice and icebergs is really a beautiful sight.

The first thing that makes its appearance here in the spring, immediately after the field ice leaves the strait, is the black whale. They come in great numbers, and remain around the Island for about three weeks, when they go up the strait into the gulf, unless a few straggling ones that remain all summer. They generally return about the end of September, and remain hovering around the Island until the ice commences.

REMARKS ABOUT THE THERMOMETER.

Before an easterly wind, the thermometer rises from 30 to 40 degrees in the short space of an hour, and falls in as short a space. In the spring of the year, the packed ice extends to an easterly direction twenty miles outside Carpo Island, and remains ten or twelve days. After the channel through the Strait is clear, vessels making for the Strait should bring the light-house to bear due west. This course will be the first channel clear of ice in the spring of the year.

D. VAUGHAN.

METEOROLOGICAL REPORT, FROM 1st MAY, 1859, TO 31st MAY, 1860.

MAY, 1859.	Direction of Wind.	Remarks.	Guns fired in 24 hours.	Icebergs seen, and when.	Rise and Fall of the Barometer.			Thermometer Outside.		
					Sunrise.	Noon.	Sunset.	Sunrise.	Noon.	Sunset.
Sunday, 1st.....	N E	Blowing strong with wet snow and fog. 3 P. M.—Clear weather; three Brigs in the ice—Strait still blocked up with ice and icebergs.	14	119	29.10	29.19	29.19	30	40	34
Monday, 2nd.....	N E	With light breeze and clear weather. 6 A. M.—Wind N. W. Calm during the afternoon. Six Brigs in the ice.	110	29.29	29.24	29.24	30	45	34
Tuesday, 3rd.....	N N W	With light breeze and clear weather. Three Brigs in sight.	167	29.34	29.34	29.40	28	41	35
Wednesday, 4th.....	Variable.	With fine clear weather. 5 P. M.—A fresh breeze from N. W. with snow. 10 P. M.—Clear weather.	5	176	29.40	29.39	29.34	27	43	32
Thursday, 5th.....	N W	With light breeze and clear weather.	202	29.50	29.44	29.40	24	34	38
Friday, 6th.....	N W	With a fresh breeze and clear weather. 1 A. M.—Winds veered to N, with wet snow. At noon, wind N.N.E., blowing heavy with clear weather.	4	264	29.29	29.30	29.40	28	29	28
Saturday, 7th.....	W S W	With a fresh breeze and clear weather. 3 P. M.—Rain; one brig in sight. At sunset blowing heavy. 10 P. M.—A shift of winds to N.W., blowing strong with wet fogs.	6	241	29.40	29.30	29.04	27	37	30
Sunday, 8th.....	N W	Blowing strong with wet fog. 11 A. M.—A shift of winds to E, with clear weather. The ice in the Strait a good deal broken up, but not sufficiently clear yet for vessels to pass through. One Brig in sight.	11	219	28.90	28.94	28.94	29	40	35
Monday, 9th.....	Variable.	With light airs and fine clear weather. Two Brigs in sight. 10 A. M.—Blowing strong from W. The field ice drifting fast out of the Strait.	204	28.99	28.90	28.98	27	38	32
Tuesday, 10th.....	N W	With a fresh breeze and clear weather. Clear water along the north shore, through the Strait. Two Brigs in sight. Seal fishing.	214	29.17	29.30	29.39	29	36	32
Wednesday, 11th.....	N W	Blowing strong, with clear weather. 4 P. M.—A shift of winds to N.E., blowing fresh with fog. 7 A. M.—Clear weather; winds light and variable during the afternoon.	4	221	29.54	29.69	29.79	29	40	37
Thursday, 12th.....	W N W	Blowing strong with clear weather. The Strait is sufficiently clear of field ice for vessels to pass through. At sunset winds W, blowing a gale.	194	29.80	29.69	29.64	30	37	33
Friday, 13th.....	W	Blowing a gale with clear weather. The Strait is perfectly clear of field ice; it was the 10th of June, last year, when the first vessel passed through the Strait, and on the 9th of April, in 1857, when the field ice was sufficiently cleared for vessels to pass. Fog occasionally during the afternoon, with less winds and heavy rain.	11	147	29.50	29.50	29.40	30	37	34

11 147 29.50 29.50 29.40 30 37

Saturday, 14th...	N W	Blowing strong with fog and rain. 10 A.M.—Wind W. with fog. 3 P.M.—Clear weather. One Schooner passed going N. One crystal chimney broken.	15	156	29.10	29.16	29.30	34	42	38
Sunday, 15th...	W	Blowing a strong breeze with clear weather. One crystal chimney broken.	156	156	29.40	29.49	29.59	28	36	33
Monday, 16th...	Variable	With light airs and clear weather. 6 A.M.—Fog. 8 A.M.—Clear weather, winds W. blowing heavy.	3	142	29.60	29.60	29.50	28	37	33
Tuesday, 17th...	W N W	Blowing strong with clear weather.	163	163	29.54	29.54	29.54	30	43	32
Wednesday, 18th...	W	With strong breeze and clear weather. One crystal chimney broken.	184	184	29.54	29.50	29.49	35	43	35
Thursday, 19th...	W	With a fresh breeze and clear weather. 3 P.M.—Winds increased to blow strong, with fog.	8	176	29.44	29.47	29.40	31	49	37
Friday, 20th...	W	Blowing fresh with wet fog. 3 A.M.—A shift of winds to N.E., and blowing strong with snow.	7	182	29.50	29.67	29.70	30	36	32
Saturday, 21st...	Variable	With light airs and fine weather. At 7 P.M., a fresh breeze from S. W.	177	177	29.74	29.79	28.84	28	45	33
Sunday, 22nd...	S W	With a fresh breeze and clear weather.	180	180	29.60	29.60	29.50	31	45	32
Monday, 23rd...	S W	Blowing a strong breeze, with hazy weather. 6 P.M.—Winds veered to W, with fog and heavy rain.	6	29.43	29.20	29.20	31	42	40	
Tuesday, 24th...	W N W	With a fresh breeze, and fog. 10 A.M.—Clear weather. 2 P.M.—Fog. 6 P.M.—Clear weather.	20	167	29.30	29.39	29.40	35	42	37
Wednesday, 25th...	N N W	With a fresh breeze and clear weather. 4 P.M.—A sudden shift of winds to E, and blowing fresh.	150	150	29.57	29.64	29.64	40	47	34
Thursday, 26th...	E	With slight breeze and clear weather. 8 A.M.—A shift of winds to W, blowing strong with hazy weather.	152	152	29.39	29.34	29.39	36	42	40
Friday, 27th...	Variable	With light airs and clear weather. At 6 P.M.—A steamship passed, inward bound, the first vessel that passed through the Strait this spring. Three men from Quirpon Harbor came across to the Island, this forenoon; they have been short of provisions, and in great distress for the past six weeks; I supplied them with some bread and pork, &c. One Schooner passed going N.	180	180	29.57	29.64	29.70	38	44	41
Saturday, 28th...	S E	Blowing a fresh breeze, with hazy weather. 11 A.M.—Wet fog. 6 P.M.—Winds S.W., with rain and fog.	14	29.59	29.49	29.40	32	38	40	
Sunday, 29th...	S W	Blowing, a fresh breeze, with fog. 2 P.M.—Clear weather. 6 P.M.—Winds W, blowing strong, with fog.	20	120	29.34	29.34	29.30	41	56	42
Monday, 30th...	N N W	With slight breeze and fog. 9 A.M.—Clear weather, blowing strong from W. Four Brigs and two Schooners passed, going to the North Shore. 8 P.M.—Fog occasionally during the night.	9	140	29.30	29.29	29.29	44	45	40
Tuesday, 31st...	W	Blowing heavy, with clear weather. 8 A.M.—A steamship passed, outward bound. Two Brigs passed going N.	4	145	29.24	29.29	29.30	40	45	40

Powder consumed this month—3 pound shots fired, 483 pounds. Number of shots 161.

Oil used this month, 30 gallons.—Inch Tubes 161.

Concentric Wicks used this month, 1 yard.

Number of Argand Cotton Wicks, used this month, 4.

Cylinders broken this month, 3.

DEPARTMENT OF THE ARMY

METEOROLOGICAL REPORT, &c.—(Continued.)

JUNE, 1859.	Direction of Wind.	REMARKS.	Guns fired in 24 hours.	Icebergs, when seen.	Rise and Fall of the Barometer.			Thermometer Outside.		
					Sunrise.	Noon.	Sunset.	Sunrise.	Noon.	Sunset.
Wednesday, 1st.	N N W	Blowing a strong breeze with clear weather.	125		29.49	29.54	29.59	37	45	40
Thursday, 2nd.	N W	With a light breeze and rain. 8 A.M.—Clear weather with shift of winds to S.E. One Bark and three Brigs passed, inward bound. 6 P.M.—Fog.	6		29.49	29.59	29.64	39	45	35
Friday, 3rd.	S E	With slight breeze and fog. 1 A.M.—Clear weather. 5 A.M.—Winds veered to W.S.W., blowing strong with hazy weather. 7 A.M.—Wet fog. 9 P.M.—Sudden squall and shift of wind to E, with clear weather.	13		29.34	29.27	29.30	40	43	40
Saturday, 4th.	E	Blowing strong with clear weather. 3 A.M.—Fog and rain occasionally, during the day. Six Brigs and five Schooners passed going to the North Shore.	14		29.50	29.40	29.44	30	39	38
Sunday, 5th.	Variable.	With light airs and fog. 11 A.M.—Clear weather, vir-as N.W.—5 P.M.—A shift of wind to W, blowing strong.	12		29.54	29.54	29.60	40	47	40
Monday, 6th.	E	Blowing strong with clear weather. 4 A.M.—Fog. 6 A.M.—A shift of wind to W, with fog and rain. 5 P.M.—Clear weather, blowing heavy. Four Brigs and three Schooners passed going to the North Shore.	16	100	29.40	29.30	29.24	35	50	39
Tuesday, 7th.	W	Blowing strong with clear weather. A steamship passed outward bound at half-past four A.M. Eight Brigs and six Schooners passed, going to the North Shore.	94		29.30	29.44	29.50	38	46	40
Wednesday, 8th.	W	With a fresh breeze and clear weather. 5 P.M.—Light winds from S.W. One Brig and a Ship passed, inward bound; Seven Schooners and four Brigs passed, going to the North Shore.	78		29.66	29.66	29.66	42	53	60
Thursday, 9th.	E	With a fresh breeze and clear weather. 5 A.M.—Fog. 6 P.M.—Clear weather. Nine Schooners and six Brigs passed, going to the North Shore.	18		29.40	29.30	29.29	37	47	44
Friday, 10th.	Variable.	With light airs and fog occasionally. Eighteen Schooners and seventeen Brigs passed, going to the North Shore; One Ship inward, and Two outward.	10		29.38	29.40	29.44	38	56	51
Saturday, 11th.	E	Blowing fresh with clear weather. 4 A.M.—Fog. 10 A.M.—Clear weather, with a shift of wind to W. Two Schooners and four Brigs passed, going to the North Shore. 9 P.M.—Fog. One crystal Chimney broken.	13	53	29.44	29.40	29.39	44	56	46
Sunday, 12th.	W	With a fresh breeze and fog. 4 A.M.—Clear weather. Two Brigs and two Schooners passed, going to the North Shore.	4	42	29.40	29.40	29.49	41	49	44
Monday, 13th.	W	With light breeze and clear weather. Twelve Brigs and ten Schooners passed, going to North Shore. At 10 P.M., a steamship passed, outward bound, fired two guns and let off several rockets.	3	58	29.74	29.69	29.59	43	60	45
Tuesday, 14th.	W	Blowing a strong breeze, with clear weather. 10 A.M.—Fog and rain. 6 P.M.—A sudden shift of wind to N.E. 11 P.M.—Clear weather. Three Brigs and four Schooners passed, going to the North Shore.	13	58	29.79	29.39	29.39	42	46	41

W
 Tuesday, 14th.....
 Blowing a strong breeze, with clear weather. 10 A. M.—Fog and rain. Three Brigs and sudden shift of wind to NE. 11 P. M.—Clear weather: Three Schooners passed, going to the North Shore.

Wednesday, 15th.....	Variable.	With light airs and clear weather. Ten Brigs and six Schooners passed, going to the North Shore. At 2 P. M., a Ship inward bound, 5 P. M., winds S. W., with rain; saw the remains of a wrecked vessel floating along the Island of Quirpon.	5	52	29.44	29.49	29.40	37	53	42
Thursday, 16th.....	S W	Blowing heavily, with fog and rain occasionally. 4 A. M.—Hazy weather. 9 A. M. Winds veered to W, blowing a gale, with fog and rain. 6 P. M.—Less wind with clear weather. 11 P. M.—A shift of wind to N. E. One crystal chimney broken.	14	47	29.30	29.44	29.59	33	48	40
Friday, 17th.....	N E	With light breeze and clear weather. 9 A. M.—A shift of wind to S. W. Twelve Brigs passed during the day, going to the North Shore.	10	42	29.74	29.64	29.40	36	45	36
Saturday, 18th.....	S S L	With a fresh breeze and hazy weather. Four Schooners passed, going to the North Shore, 2 P. M.—The wind veered E. S. E., blowing a gale with rain and fog.	12	30	29.10	29.09	29.10	35	47	42
Sunday, 19th.....	E	Blowing a gale with fog and rain. 2 A. M.—Less wind. 6 A. M.—A shift of wind to W, blowing a gale, with fog and rain. At noon, clear weather. One crystal chimney broken.	6	37	29.09	29.09	29.40	44	48	37
Monday, 20th.....	W	Blowing a strong breeze with hazy weather. 4 A. M.—Fog. 9 A. M.—Clear weather with a shift of wind to N. E., blowing strong.	42	36	29.50	29.50	29.60	32	56	47
Tuesday, 21st.....	Variable.	With light airs and clear weather. A Steamship passed at 5 A. M., outward bound.	3	7	29.50	29.40	29.30	37	41	38
Wednesday, 22nd.....	E	With a fresh breeze and hazy weather. 1 P. M.—Heavy rain.	18	34	29.30	29.40	29.50	35	33	31
Thursday, 23rd.....	Variable.	With light airs and fog occasionally. 9 A. M.—Clear weather. 2 P. M.—Light wind from E. 9 P. M.—A shift of wind to S. W.	36	28	29.40	29.39	29.39	41	65	50
Friday, 24th.....	W	Blowing heavy with clear weather. 6 A. M.—Fog winds increasing to a gale.	5	30	29.39	29.40	29.39	38	60	44
Saturday, 25th.....	W	Blowing a gale with rain. 2 A. M.—Less wind with clear weather. Calm during the afternoon.	14	22	29.40	29.40	29.39	41	58	46
Sunday, 26th.....	Variable.	With light airs and fog occasionally. Two Schooners passed, going to the North Shore; the Steamer Napoleon arrived here at 3 A. M. with stores for the light-houses.	3	22	29.10	29.09	28.104	47	58	46
Monday, 27th.....	N N W	With strong breeze and clear weather.	5	30	29.39	29.40	29.39	38	60	44
Tuesday, 28th.....	W	Blowing strong, with clear weather. A Steamship passed, outward bound, at 3 A. M. 8 A. M.—Wind increased to a gale, with hazy weather.	14	28	29.20	29.14	29.20	42	57	46
Wednesday, 29th.....	W	Blowing strong, with hazy weather. 3 A. M.—Fog. 5 P. M.—Clear weather. Two Schooners passed, going to the North Shore.	3	22	29.30	29.30	29.34	41	52	47
Thursday, 30th.....	S W	Blowing fresh, with clear weather. Eight Schooners and two Brigs passed, going to the North Shore; and a Steamship, inward bound, at 9 P. M. 11 P. M.—Heavy rain.....	3	22	29.10	29.09	28.104	47	58	46

Powder consumed this month, 3 pound shots fired, 657 pounds. 219 shots.

Oil consumed this month, 26 gallons.

Argand Cotton Wicks used this month 4.

Flannel used for Cartridges this month, 36 yards.

Concentric Wicks used this month, 1 yard.

Crystal chimneys broken this month, 3

Quill Tubes used this month, 319.

METEOROLOGICAL REPORT, &c.—(Continued.)

JULY, 1869.	Direction of Wind.	Description.	Guns fired in 24 hours.	Icebergs, when seen.	Rise and Fall of the Barometer.			Thermometer Outside.		
					Sunrise.	Noon.	Sunset.	Sunrise.	Noon.	Sunset.
Friday, 1st.....	S W	Blowing heavy, with rain. 6 A. M.—Wind light and variable, with rain and fog. 11 A. M.—Wind N. W., with clear weather. Two Ships, two Barks, three Brigs, passed, outward bound, and eleven Schooners, going to the North Shore.	8	19	28.39	28.40	29.20	44	50	42
Saturday, 2nd.....	W	Blowing a strong breeze, with hazy weather. At 6 P. M., fourteen French seamen belonging to the Ship St. Louis, Captain Bernier, of St. Brien, France; Ship lay in Quirpon Harbor, crews of four boats safe at the lighthouse, they had been blown off from their fishing ground on the forenoon of the 28th of June, they were four days in their boats without provisions or water, and got to the lighthouse, on the fifth day, in a most deplorable state.....	7	29.24	29.29	29.30	45	52	40
Sunday, 3rd.....	S W	Blowing strong, with hazy weather. 10 A. M.—Fog and rain. Four Schooners passed, going to the North Shore. 11 P. M.—The Schooner Two Sisters, of Buena Vista Bay, Newfoundland, struck on the rocks, three miles below the lighthouse, in a thick, wet fog, and blowing very heavy at the time. The vessel sunk almost immediately—one young man and two young women were drowned—nine men and one woman got to the lighthouse, at three o'clock in the morning, in a most pitiful state, being very much cut and bruised among the rocks, and almost naked. They were all in bed at the time, excepting three, who were on watch, one of whom was drowned.....
Monday, 4th.....	S W	Blowing heavy, with wet fog. 4 A. M.—A shift of wind to N. W., with clear weather.	18	29.10	29.14	29.20	42	54	52
Tuesday, 5th.....	Calm	With fog occasionally. 10 A. M.—Clear weather. Eight Schooners passed, going to the North Shore, during the day.....	4	29.20	29.39	29.40	45	56	42
Wednesday, 6th..	N W	With a strong breeze and clear weather. Ten Schooners passed, going to the North Shore.....	8	21	29.70	29.80	29.84	49	47	45
Thursday, 7th....	W	Blowing strong, with clear weather. 4 A. M.—Fog. 11 A. M.—Clear weather. Fourteen Schooners passed, going to the North Shore.....	22	29.80	29.60	29.50	45	55	50
Friday, 8th.....	Variable.	With light airs and clear weather. One bark passed, outward bound, and Fourteen Schooners, going to the North Shore, during the day. 5 P. M.—Wind light from E.....	8	18	29.36	29.34	29.29	45	54	48
Saturday, 9th....	N E	With a light airs and clear weather. Eighteen Schooners and four Brigs passed going to the North Shore. A man named John Smetham arrived here this day, from St. Johns, Newfoundland, for the purpose of exploring for minerals on the island. The wrecked people left here this morning.....	20	29.44	29.44	29.44	47	65	48
Sunday, 10th....	E	With a light air and clear weather. One Brig and one Schooner passed, going to the North Shore, in the forenoon.....	20	29.44	29.44	29.44	45	55	50
			23	23	29.50	29.50	29.49	45	52	59

Day	Direction	Description	15	16	17	18	19	20	21	22	23	24	25	26	27	28	29	30	31
Monday, 11th	W	Blowing a strong breeze, with clear weather. Seven Schooners passed, going to the North Shore, during the day.	29.40	29.44	29.50	46	55	51											
Tuesday, 12th	W	With a fresh breeze and clear weather. A Steamship passed, outward bound, at 7 A. M., One Brig and Three Schooners going to the North Shore. 10 A. M.—Winds increased to a gale. 6 P. M.—Fog.	29.40	29.39	29.20	45	55	50											
Wednesday, 13th	W	Blowing a gale, with fog. 3 A. M.—Less winds from N.W., with fog. 9 A. M.—Clear weather with a shift of winds to N. E.	29.10	29.20	29.54	40	52	45											
Thursday, 14th	N	With slight breeze and clear weather. 12 Schooners passed going to the North Shore. 11 A. M.—Sudden shift of winds to S. W.	29.54	29.60	20.60	43	57	50											
Friday, 15th	NW	Blowing fresh with clear weather. At 10 A. M.—The Steamship Indian, Capt. Smith, passed, inward bound, he very kindly gave to me to put a letter on board and supplied me with some fresh provisions. A Steamship, Bark and Brig passed, outward bound at 10 A. M., and eight Schooners going to the North Shore.	29.60	29.54	29.59	45	61	52											
Saturday, 16th	Variable	With light airs and clear weather. Eight Schooners passed, going to the North Shore. 11 A. M.—A fresh breeze from S. W.	29.59	29.50	29.40	47	57	50											
Sunday, 17th	Variable	With light airs and clear weather. 3 A. M.—Wet fog. 4 P. M.—Clear weather. 6 P. M.—Fog. 11 P. M.—Clear weather, with strong breeze from S. E.	29.30	29.30	29.30	48	61	49											
Monday, 18th	NE	Blowing a gale with hazy weather. 11 P. M.—Less winds.	29.30	29.40	29.40	42	46	40											
Tuesday, 19th	NE	Blowing fresh, with hazy weather. 10 A. M.—A steamship passed, outward bound.	29.39	29.30	29.20	39	49	40											
Wednesday, 20th	N	With fresh breeze and clear weather. Wind W, blowing strong with wet fog.	29.04	29.00	28.99	41	54	47											
Thursday, 21st	NW	With a light breeze and wet fog. 6 A. M.—Clear weather. 11 A. M.—Winds S. W. A Steamship passed, inward bound, at 7 P. M. 8 P. M.—A shift of winds to E.	28.99	28.99	28.90	46	59	46											
Friday, 22nd	E	Blowing strong with hazy weather. 4 A. M.—Fog, with rain. 10 A. M.—Winds N. E., blowing a gale with wet fog.	28.70	28.60	26.70	45	50	45											
Saturday, 23rd	NE	Blowing a gale with fog. 7 A. M.—Wet, hazy weather. 6 P. M.—Less winds with clear weather.	28.80	28.90	29.00	42	50	51											
Sunday, 24th	E	Blowing heavy with clear weather. At 7 A. M., winds increased to a gale with heavy rain and thick weather. Less winds at 11 P. M. One crystal chimney broken.	28.99	28.89	28.89	46	46	43											
Monday, 25th	NE	Blowing strong with rain. 10 A. M.—Clear weather. Fog occasionally during the afternoon. 10 P. M.—Clear weather.	28.94	29.10	29.10	41	46	46											
Tuesday, 26th	NE	With light air and hazy weather. 1 A. M.—The Steamship Hungarian, Capt. Jones, passed, outward bound, fired two guns and let off several rockets. Calm during the afternoon. 8 P. M.—Fog.	29.24	29.20	29.20	44	52	44											
Wednesday, 27th	Variable	With light airs and clear weather. 10 A. M.—A strong breeze from W. At 7 P. M. a Steamship passed, inward bound, and eight Schooners going to the North Shore.	29.20	29.20	29.24	45	58	50											
Thursday, 28th	ESE	With a light breeze and clear weather. 8 A. M.—Fog. One crystal chimney broken.	29.28	29.34	29.24	46	60	47											
Friday, 29th	Calm	With fog. 2 A. M.—Clear weather. 6 A. M.—Low fog occasionally with light variable winds.	29.30	29.44	29.50	48	53	50											
Saturday, 30th	W	Blowing heavy. One Schooner passed going to the North Shore. 1 A. M.—Fog. At 7 A. M. winds increased to a gale with fog occasionally.	29.50	29.50	29.50	48	53	50											
Sunday, 31st	W	Blowing a gale with clear weather. 3 A. M.—Fog. 6 P. M.—Clear weather with less wind from N. W. Sent the copy of the log to the Trinity Board up to this date.	29.40	29.35	29.50	50	60	52											

Stores consumed this month—225 shots fired, 3lb each. 675 pounds of powder—on hand 1688. Oil, 26 gallons. Concentric Wicks, 1 yard. Argand Cotton Wicks, 4. Flannel for Cartridges, 37 1/2 yards. Crystal Chimneys broken, 2. Quill Tubes, 225.—On hand, 986. Sent to the Trinity Board, return of stores used to

METEOROLOGICAL REPORT, &c.—(Continued.)

AUGUST, 1859.	Direction of Wind.	Remarks.	Guns fired in 24 hours.	Icebergs, when seen.	Rise and Fall of the Barometer.			Thermometer Outside.		
					Sunrise.	Noon.	Sunset.	Sunrise.	Noon.	Sunset.
Monday, 1st.....	N W	Blowing strong with clear weather. 1 A. M.—Fog, 9 A. M.—Hazy. 11 A. M.—a steam-boat schooner-rigged passed outward bound, and one Schooner going to the N. S. With a fresh breeze and heavy rain. 5 A. M.—A shift of wind to E. with clear weather. 7 A. M.—Fog occasionally; one vessel passed at 11 A. M., fired three guns it being foggy at the time. Supposed to be the mail steamship Indian, outward bound.....	11	6	29.44	29.39	29.44	50	56	54
Tuesday, 2nd.....	N W	Blowing strong with fog. 7 P. M.—Heavy rain with thunder and lightning.....	20	29.34	29.34	29.39	52	64	57
Wednesday, 3rd..	W	Blowing heavy with fog. 1 P. M.—Clear weather, four Schooners passed going to the N. shore. 7 P. M.—A shift of wind to E. with a fresh breeze.....	22	29.39	29.30	29.30	52	60	55
Thursday, 4th....	W	With clear weather. 10 A. M.—Blowing strong from E. with rain and fog, 1 ship and one Schooner passed inward bound at 9 A. M.....	13	6	29.24	29.24	29.30	52	56	54
Friday, 5th.....	Calm	With slight breeze and fog. 3 P. M.—Clear weather occasionally during the afternoon, six Schooners passed going to the N. shore.....	14	5	29.20	29.10	29.10	50	55	51
Saturday, 6th....	E	Blowing very heavy with clear weather. 10 A. M.—Wind increased to a gale, one crystal chimney broken.....	15	29.00	28.89	28.80	49	57	51
Sunday, 7th.....	W	Blowing heavy with hazy weather. 4 A. M.—Less wind, with fog. 1 P. M.—Clear weather. 7 P. M.—Fog, two Brigs and one Ship passed outward bound, and one Schooner going N.....	8	28.80	28.80	28.99	51	58	50
Monday, 8th.....	W	With a fresh breeze and clear weather. Three Men belonging to the Brig Boreal, Captain Revel, of France, arrived here this morning at 3 A. M. They were blown off from their fishing ground at Quirpon in the gale of the 7th; I supplied them with provisions. A Steamship passed, outward bound, at 8 P. M. At 2 P. M.—Two Brigs and one Ship inward bound.....	14	7	29.10	29.20	29.20	48	58	53
Tuesday, 9th.....	N E	Blowing heavy with rain. 8 A. M.—Clear weather. The French boat that was driven on shore here on the 9th, was wrecked in the bay near the landing this morning at 10 A. M., in heavy wind from the W.....	6	29.30	29.40	29.44	49	58	50
Wednesday, 10th..	W	N. who is surveying round the island, very kindly took the Frenchmen that were wrecked here to Quirpon Harbour, where their ship is lying. Captain Dunn arrived off the Island in a small schooner, but could not land; he came to take the rigging off his schooner away that was wrecked last fall.....	6	29.20	29.30	29.40	47	59	60
Thursday, 11th....	N W	Blowing heavy with rain and fog, heavy thunder and lightning during the night.....	8	29.44	29.40	29.44	53	62	57
Friday, 12th.....	N W	17	29.34	29.34	29.34	51	61	56

R E M A R K S .

..... Fog occasionally during the aft-
 3 A. M.—Hazy weather.
 Fog occasionally during the aft-
 3 A. M.—Hazy weather.

Saturday 13th.....	N N W	Blowing strong with fog. 3 A.M.—Hazy weather. Fog occasionally during the afternoon. 3 P.M.—A sudden shift of winds to N.E., with heavy squalls. 6 P.M.—Winds increased to a gale. Four French men belonging to different French Ships in Quirpon harbour arrived here at 7 P.M. in a small lugger with a letter of thanks to me from their Captains for the kindness I had shown to their men who were cast away on this Island this summer.	14.....	29.20	29.24	29.24	52	58	46	
Sunday, 14th.....	E	Blowing strong with heavy rains. Four Schooners passed going to the North. Captain Dunn arrived here this morning in his schooner.	6	7	29.30	29.34	23.39	42	44	43
Monday, 15th.....	N E	Blowing fresh with clear weather. Eight Brigs and seven Schooners passed going to the South.	7	7	29.39	29.40	29.44	37	47	40
Tuesday, 16th.....	N E	With a light breeze, with clear weather, winds light and variable during the afternoon. A Steamship passed outward bound at 5 A.M. Four Schooners, two Brigs, going to the North.	8	8	29.39	29.44	29.50	44	62	49
Wednesday, 17th.....	N N E	With a fresh breeze and clear weather. Captain Dunn left here this morning for Quebec with a part of his rigging. At noon a shift of winds to N.W. Two Schooners passed going to the South, and three Schooners going North.	7	7	29.50	29.50	29.49	46	60	53
Thursday, 18th.....	W	Blowing heavy with clear weather. The Steamship Hungarian passed inward bound at 5 A.M.	5	5	29.40	29.39	29.30	50	62	51
Friday, 19th.....	W N W	With a light breeze and clear weather. At 8 A.M., winds E with fog and rain occasionally during the day. The Steamer Napoleon arrived here this morning at 6 A.M. with workmen to repair the Lighthouse. 8 P.M.—Winds increased to a gale.	4	5	29.20	29.04	28.80	50	60	50
Saturday, 20th.....	E	Blowing a gale with hazy weather, less winds at 4 A.M. 8 A.M.—A shift of winds to N.W. The steamer Napoleon left here this morning for Chateau Bay.	5	5	20.09	29.30	29.49	46	57	52
Sunday, 21st.....	S W	With a light air and hazy weather, at noon, winds strong from W.	6	6	29.49	29.49	29.40	49	60	53
Monday, 22nd.....	W	Blowing strong with hazy weather. At 11 A.M. fog and rain. 8 P.M.—Clear weather, with a sudden shift of winds to E, blowing strong. One christal chimney broken with a light breeze and hazy weather. 8 A.M.—The steamship Nova Scotian passed outward bound, and eight Schooners going S. and one Brig going N. At 7 P.M. a shift of winds to W.	7	6	29.50	29.50	29.60	51	55	48
Tuesday, 23rd.....	E N E	With a light breeze and clear weather. 4 A.M.—Fog. 6 A.M.—Clear weather.	2	7	28.80	29.89	29.80	40	50	43
Wednesday, 24th.....	W	Blowing strong with clear weather. 2 A.M.—Fog. At noon, clear weather. 9 P.M.—Fog.	13	5	29.60	29.60	29.60	42	55	44
Thursday, 25th.....	Variable.	With light airs, with fog and rain. 4 P.M.—Hazy weather with light winds from E.	20	20	29.45	29.44	29.34	43	55	52
Friday, 26th.....	Variable.	With light airs and fog. 10 A.M.—Winds E with hazy weather. 11 A.M.—The steamer Napoleon left for Quebec with the workmen that came to repair the Lighthouse; fog during the afternoon. Twenty-eight schooners passed in the forenoon, going S.	18	18	29.20	29.29	29.39	52	55	46
Sunday, 28th.....	E	Blowing strong with wet fog.	24	24	29.29	29.20	29.19	45	52	47
Monday, 29th.....	E S E	Blowing fresh with fog. 4 P.M.—A sudden shift of winds to W. blowing strong with clear weather, one christal chimney broken.	16	7	29.00	28.99	28.90	45	57	50
Tuesday, 30th.....	W	Blowing strong with clear weather, steamship passed outward bound at 5 A.M.	8	8	28.90	28.90	29.00	47	54	48
Wednesday, 31st.....	N N W	With a light breeze and clear weather, Her Majesty's Surveying Steamer, Captain Orlebar, surveying round the Island, in sight. Twenty three Schooners passed going S.	8	29.20	29.39	29.30	43	56	52	

Stores consumed this month—271 Shots fired, 3 lbs each, making 813 lbs powder: on hand 875. Oil 98 gallons. Concentric Cotton Wicks 14 yards. Argand Cotton Wicks 6 in number. Flannel used in cartridges, 45 yards. Quill Tubes used 271. Crystal Chimneys broken 3. On hand 725.

METEOROLOGICAL REPORT, FROM 1st MAY, 1859, TO 31st MAY, 1860.

SEPT., 1859.	Direction of Wind.	REMARKS.	(Guns fired in 24 hours, when Icebergs seen.)	Rise and Fall of the Barometer.			Thermometer Outside.		
				Sunrise.	Noon.	Sunset.	Sunrise.	Noon.	Sunset.
Thursday, 1st....	N E	With a light breeze and hazy weather. 7 P.M.—Fog. Seven Schooners passed going S.....	5	29.34	29.29	29.29	46	61	47
Friday, 2nd.....	E	Blowing strong with fog occasionally during the afternoon. Six Schooners passed going S.....	16	29.14	29.19	29.20	45	58	48
Saturday, 3rd....	E	Blowing strong with fog. 11 A.M.—Rain. 2 P.M.—Clear weather.....	14	29.29	29.14	29.10	47	44	40
Sunday, 4th.....	N E	With a light breeze and clear weather. 7 P.M.—A shift of winds to S. W. Twenty-three Schooners passed, going South, during the day.....	7	29.40	29.40	29.38	37	50	42
Monday, 5th.....	W	Blowing a gale, with clear weather. 6 P.M.—Less wind from NW.....	7	29.80	29.80	29.00	42	35	44
Tuesday, 6th....	N E	With a light breeze and clear weather. 3 A.M.—The Steamship Hungarian passed outward bound, and six Schooners going to the S.....	7	29.29	29.33	29.20	42	52	44
Wednesday, 7th..	N E	Blowing strong with clear weather. Seven Schooners passed going S. 5 P.M.—Wind SE.....	9	29.30	29.39	29.39	36	45	40
Thursday, 8th...	W	Blowing strong with clear weather. 4 P.M.—Sudden shift of wind to E, blowing heavy. Seven Schooners passed going S.....	6	29.10	29.20	29.30	41	52	41
Friday, 9th.....	N E	With light breeze and clear weather; wind light and variable during the afternoon. A Steamship passed, inward bound, and eight Schooners going S.....	6	29.40	29.40	29.39	36	50	40
Saturday, 10th...	N E	Blowing fresh with clear weather. Five Schooners passed, going to the S, and three Brigs.....	5	29.50	29.54	29.60	35	44	40
Sunday, 11th....	N E	With a light breeze and clear weather. 8 A.M.—A shift of wind to SW. 4 P.M.—Wind veered to W; blowing a gale.....	29.40	29.20	29.00	34	50	50
Monday, 12th....	W	Blowing a gale with rain. 7 A.M.—Less wind with clear weather. 11 A.M.—Wind veered to SW. Blowing a heavy gale with rain and fog.....	9	28.89	28.79	28.60	41	50	49
Tuesday, 13th....	W	Blowing a gale with clear weather. 3 A.M.—The Steamship Indian passed, outward bound. 6 A.M.—Less wind. 6 P.M.—Fog.....	6	28.79	28.89	28.104	46	54	47
Wednesday, 14th.	S W	Blowing strong with fog occasionally. 10 A.M.—Wind veered to SE; blowing a gale with rain and fog. 5 P.M.—A sudden shift of wind to W, blowing a severe gale.....	3	28.84	28.60	28.54	44	53	46
Thursday, 15th...	W	Blowing a fearful gale, with showers of rain and hail occasionally.....	28.20	28.30	28.40	42	45	40
Friday, 16th.....	W	Blowing a gale with clear weather. 11 A.M.—Less wind. 5 A.M.—A Steamship passed, outward bound. To the N of the island hard frost during the night.....	3	28.00	29.10	29.29	37	40	36

Saturday, 17th...	N N W	Blowing strong, with clear weather. 8 A.M.—The wind increased to a heavy gale. 12 A.M.—Less wind. Two Schooners passed, going S, in the forenoon.	4	29.39	29.29	29.20	37	47	41
Sunday, 18th....	W N W	Blowing heavy, with clear weather. At 12 A.M.—Wind veered to NE, with a fresh breeze. Four Schooners passed, going to the S.	7	29.30	29.30	29.39	38	43	37
Monday, 19th....	N E	With a light breeze and clear weather. A Steamship passed, inward bound, at 8 A.M., and five Schooners going to the S. 9 P.M.—Fog.	3	29.40	29.39	29.34	39	42	40
Tuesday, 20th....	S W	Blowing fresh with rain and fog. 1 P.M.—Clear weather. 3 P.M.—Wind W, with heavy rain and fog.	20	29.20	29.10	28.99	41	51	43
Wednesday, 21st..	W N W	Blowing a heavy gale with clear weather. 4 P.M.—The wind veered to N, the gale moderating.	6	29.10	29.29	29.40	35	43	40
Thursday, 22nd..	N	With a fresh breeze and clear weather. 4 P.M.—Wind E; two schooners passed going to the S. At 8 P.M.—A steamship passed inward bound.	8	29.69	29.70	29.70	30	42	35
Friday, 23rd....	N E	Blowing strong with clear weather. 11 A.M.—Wind increased to a gale, with showers of snow. 6 P.M.—Less wind.	8	29.49	29.50	29.60	31	42	30
Saturday, 24th....	Variable.	With light airs and hazy weather. At noon, wind W, blowing heavy. Two Brigs passed, outward bound, in the forenoon. One crystal chimney broken.	7	29.50	29.40	29.30	29	49	39
Sunday, 25th....	N W	Blowing strong with hazy weather. 10 A.M.—Clear weather.	7	29.20	29.20	29.30	40	41	38
Monday, 26th....	S W	With a light breeze and clear weather. 8 A.M.—Wet fog.	16	29.40	29.40	29.39	37	46	41
Tuesday, 27th....	W	Blowing heavy with wet fog. One crystal chimney broken.	24	29.19	29.10	29.10	43	43	40
Wednesday, 28th..	N W	With a fresh breeze and wet fog. 2 A.M.—A sudden shift of wind to ENE, with a fresh breeze and heavy rain. 3 P.M.—Clear weather. At 9 P.M. the Steamship Hungarian passed, inward bound, and four Schooners passed during the day, going S.	13	29.20	29.29	29.40	39	43	39
Thursday, 29th....	N N E	Blowing fresh with clear weather. Two Brigs, one Bark, and one Ship, passed, inward bound, in the forenoon; and three Schooners and four Brigs, going S, during the day. 4 P.M.—Wind veered to N, with showers of snow.	6	29.40	29.40	29.50	35	42	34
Friday, 30th.....	N	With a fresh breeze and clear weather. One Bark passed, inward bound, and two Brigs going S. Showers of snow during the afternoon.	6	29.49	29.40	29.44	30	37	30

135 shots fired, this month, 2 pounds each, making 270 pounds of powder. Flannel used this month 22½ yards—on hand 22½ yards.

Oil used this month, 30 gallons.—Quill Tubes 135—on hand 590.

Number of Argand Cotton Wicks, used this month, 6.

Concentric Wicks used this month, 1½ yard.

Cylinders broken this month, 2.

METEOROLOGICAL REPORT, &c.—(Continued.)

OCT., 1859.	Direction of Wind.	Guns fired in 24 hours, when Leeberg's seen.	Rise and Fall of the Barometer.			Thermometer Outside.		
			Sunrise.	Noon.	Sunset.	Sunrise.	Noon.	Sunset.
Saturday, 1st.....	N	7	29.50	29.40	29.34	27	40	35
Sunday, 2nd.....	S E	14	29.19	29.19	29.00	36	42	38
Monday, 3rd.....	S W	16	28.80	28.59	28.50	38	45	36
Tuesday, 4th.....	W	5	28.44	28.50	28.80	36	42	34
Wednesday, 5th...	N W	4	29.30	29.40	29.50	35	46	36
Thursday, 6th....	E S E	4	29.39	29.30	29.09	32	42	36
Friday, 7th.....	E	9	27.80	27.90	27.90	32	36	33
Saturday, 8th....	W N W	5	28.30	28.50	28.80	30	40	37
Sunday, 9th.....	N W	6	29.40	29.59	29.59	32	39	36
Monday, 10th....	N E	4	29.30	29.39	29.40	29	32	30
Tuesday, 11th....	W	4	29.40	29.30	29.30	28	36	34
Wednesday, 12th.	W	6	29.19	29.14	29.10	30	40	30
Thursday, 13th...	N N W	7	29.39	29.40	29.40	30	32	30
Friday, 14th.....	S W	18	29.20	29.09	29.00	27	30	29
Saturday, 15th....	S W	19	28.90	28.99	29.00	30	40	33

R E M A R K S .

With a fresh breeze and clear weather. At noon wind W, with a strong breeze. Two Schooners passed, going S, in the forenoon.
 Blowing fresh with rain. 10 A.M.—Fog; wind SW. One crystal chimney broken.
 With slight breeze and wet fog. 3 A.M.—A shift of wind to ESE, blowing strong with fog and heavy rain. 4 P.M.—The wind shifted to W; blowing a gale with clear weather.
 Blowing a gale with clear weather. 6 P.M.—The wind veered to NNW, the gale moderating.
 Blowing fresh with clear weather; wind light and variable during the afternoon. Three Brigs and one Schooner passed, during the day, going S.
 Blowing heavy with hazy weather. 4 P.M.—Wet fog. Three Brigs passed during the day, going S; at 6 P.M. the wind increased to a severe gale. One crystal chimney broken.
 Blowing a perfect hurricane with rain and hailstones. 4 A.M.—Sudden shift of wind to WSW, blowing equally as heavy a gale with rain. At noon the Barometer was down to 27.50, which is lower than I have seen it since I have been on this island.
 Blowing a heavy gale with rain. 3 P.M.—The gale moderated a little, with clear weather.
 Blowing a strong breeze with clear weather; wind light and variable during the afternoon. 3 P.M.—One Schooner passed going S.
 Blowing strong with clear weather. 4 A.M.—Heavy snow. 7 P.M.—Clear weather. Blowing fresh with clear weather. At 6 A.M. the steamship North American passed outward bound, and two Schooners going to the S. One crystal chimney broken. Blowing fresh with clear weather. One Schooner passed going to the N; a vessel bottom up, passed close and drifting out to sea, she appeared to be coppered, and about one hundred feet long. A 8 P.M. a shift of wind to E, with a strong breeze.
 Blowing fresh with clear weather. 4 P.M.—A Steamship passed, inward bound.
 Blowing strong with clear weather. 6 A.M.—Snow. 3 P.M.—Heavy rain and fog.
 Blowing strong with wet fog. 4 A.M.—The wind veered to NW. 11 A.M.—Clear weather. 5 P.M.—Fog, with a light breeze.

Friday, 14th..... 18..... 29.20 29.09 29.00 27 30 29
 Saturday, 15th..... 19..... 28.90 28.99 29.00 30 40 33

Sunday, 16th.....	N E	Blowing heavy with fog. 9 A.M.—Clear weather. Two Brigs and four Schooners passed, going to the S, during the day.	9	4	29.00	28.90	28.99	30	32	28
Monday, 17th.....	N N W	Blowing strong with clear weather. 8 A.M.—A Bark passed, outward bound; two Brigs and two Schooners passed, going to the S. At 4 P.M. the wind veered ENE. At half-past 9 P.M. the steership-Hungarian, Captain Jones, passed outward bound.	4	5	29.29	29.50	29.59	26	32	30
Tuesday, 18th.....	E N E	Blowing strong with clear weather. 6 A.M.—The wind veered to E, blowing heavy with sleet and fog; at noon, heavy rain.	12		29.49	29.44	29.40	30	32	30
Wednesday, 19th.	E	Blowing strong with fog occasionally. 9 A.M.—Heavy rain and fog. One crystal chimney broken.	20		29.19	29.10	29.09	31	39	36
Thursday, 20th.	E S E	Blowing strong with fog and rain.	24		28.90	28.90	28.90	35	37	36
Friday, 21st.....	E S E	Blowing a fresh breeze with rain and fog. 2 A.M.—A shift of wind to SW, blowing a strong breeze with clear weather. 3 P.M.—The wind veered to SE, blowing a heavy gale with rain. 10 P.M.—A sudden shift of wind to W, the gale increasing.	13		29.10	29.19	28.80	33	38	34
Saturday, 22nd.	W	Blowing a very severe gale with rain. 5 A.M.—Clear weather, the gale moderating.	5		29.19	29.24	29.24	35	43	37
Sunday, 23rd.	N W	With a fresh breeze and clear weather.			29.29	29.29	29.30	36	39	35
Monday, 24th.....	Variable.	With light airs and clear weather. Two Brigs and one Bark passed, outward bound at 7 A.M., and two Brigs going S. 5 P.M.—Wet fog.	7	3	29.30	29.29	29.29	30	37	34
Tuesday, 25th.....	S E	With a light breeze and wet fog. 5 A.M.—Snow and fog. 11 A.M.—Clear weather. Wet snow and thick weather during the afternoon.	23		29.10	29.09	29.09	29	37	30
Wednesday, 26th.	E S E	Blowing a strong breeze with fog. 10 A.M.—Clear weather. 1 P.M.—The wind increased to a gale, with wet snow. At 3 P.M., the steamship Nova Scotian, Captain Borland, passed, inward bound. 11 P.M.—A shift of wind to SW, the gale moderating, with clear weather. One crystal chimney broken.	21		28.89	28.80	28.50	28	34	29
Thursday, 27th.	S W	Blowing strong with clear weather.			28.50	28.60	28.79	26	35	30
Friday, 28th.....	S S W	Blowing strong with clear weather. 7 A.M.—A shift of wind to E, blowing a gale with snow. 11 A.M.—The wind veered to NE, blowing a severe gale with snow and hailstone. 8 P.M.—Less wind with clear weather.	11		28.50	28.39	28.50	28	31	25
Saturday, 29th....	N E	Blowing strong with clear weather. 6 A.M.—A shift of wind to NW, with wet snow. 4 P.M.—The wind veered to NNE, with wet fog occasionally. 8 P.M.—The wind increased to a gale, with sleet.	9		28.50	28.65	28.60	29	35	30
Sunday, 30th.....	N E	Blowing a gale with sleet. 1 P.M.—Less wind with clear weather.			28.70	28.90	29.04	30	36	29
Monday, 31st.....	N W	With a strong breeze and clear weather.	3		29.29	29.30	29.30	27	30	25

240 shots fired, this month, 2 pounds each, making 480 pounds. Flannel used this month, for cartridges, 22½ yards.
 Oil used this month, 36 gallons.—Quill Tubes 240—on hand 350. Concoritic Cotton Wicks used this month, 1½ yard.
 Number of Argand Cotton Wicks, used this month, 4. Cylinders broken this month, 3.
 Powder on hand to the end of this month 125 pounds.—Damaged powder on hand 450.

METEOROLOGICAL REPORT, &c.—(Continued).

NOV., 1859.	Direction of Wind.	Description.	Guns fired in 24 hours.	Icebergs, when seen.	Rise and Fall of the Barometer.			Thermometer Outside.		
					Sunrise.	Noon.	Sunset.	Sunrise.	Noon.	Sunset.
Tuesday, 1st.....	Variab.	With light airs and clear weather. Five Brigs and one Schooner passed during the day, going S. 6 P.M.—The steamship North Briton passed, outward bound.	3	3	29.30	29.34	29.30	26	39	26
Wednesday, 2nd..	N N W	With a light breeze and clear weather. Two Brigs and a ship passed outward bound, and six Schooners and three Brigs passed going S.	3	3	29.40	29.44	29.44	23	27	25
Thursday, 3rd....	Variab.	With light airs and clear weather. 4 P.M.—A strong breeze from NE. Two Brigs and one Schooner passed during the day, going S.	3	3	29.29	29.19	29.09	26	32	30
Friday, 4th.....	N N E	Blowing heavy with clear weather. 2 A.M.—Winds N, with showers of snow. 5 Brigs and three Schooners passed during the day going S.	4	4	29.19	29.24	29.34	25	27	24
Saturday, 5th....	N N E	Blowing strong with clear weather. 4 P.M.—Light winds from NNW.	4	4	29.44	29.49	29.50	22	26	25
Sunday, 6th.....	N N W	With a light breeze and clear weather. 7 A.M.—A shift of winds to SW, with snow. 3 P.M.—The winds veered to W, blowing heavy with clear weather.	29.00	28.90	28.90	24	30	28
Monday, 7th.....	N N W	Blowing a gale with showers of snow occasionally. A Schooner passed at 7 A.M. going to the S.	28.90	29.09	29.19	19	21	18
Tuesday, 8th....	N N W	Blowing a gale with clear weather. 4 P.M.—Less winds.	29.30	29.40	29.49	15	24	22
Wednesday, 9th..	N N	With a fresh breeze and clear weather. Light variable winds during the afternoon.	29.40	29.39	29.29	19	28	26
Thursday, 10th...	W N W	Blowing strong with clear weather. One Schooner passed at 5 P.M. going to the S. wind N.	28.94	28.99	28.104	25	29	25
Friday, 11th....	N E	With a strong breeze and clear weather.	29.20	29.20	29.14	23	27	23
Saturday, 12th...	N N E	Blowing heavy with showers of snow occasionally. At noon clear weather.	29.19	29.34	29.39	20	19	16
Sunday, 13th....	N E	With a fresh breeze and clear weather. 1 P.M.—Light winds from NW. 6 P.M.—Shift of winds to SW blowing strong with wet snow.	29.50	29.49	29.30	10	20	18
Monday, 14th....	S W	Blowing a gale with snow. 7 A.M.—Rain and thick weather. 10 A.M.—The winds veered to W with clear weather, blowing a very heavy gale. At 10 P.M.—Less winds.	28.24	28.20	28.59	25	33	28
Tuesday, 15th...	W N W	Blowing strong with clear weather.	29.34	29.34	29.39	17	21	18
Wednesday, 16th..	N W	Blowing strong with clear weather.	29.60	29.70	29.70	5	14	12
Thursday, 17th...	W	Blowing a strong breeze with clear weather, showers of snow occasionally during the afternoon. 8 P.M.—Thick wet fog, winds NNW.	29.80	29.64	29.50	10	20	23
Friday, 18th....	W	Blowing a strong breeze with wet fog. At noon winds NNW.	29.30	29.40	29.44	28	32	30
Saturday, 19th...	W	Blowing fresh with wet fog. 4 P.M.—Winds NNW. 6 P.M.—Heavy rain. 10 P.M.—A sudden shift of winds to E blowing heavy with snow.	24	24	29.49	29.40	29.40	27	31	29

--A sudden shift of winds to E blowing heavy with snow.....

Sunday, 20th.....	E	Blowing a gale with snow and thick weather. A 4 P.M. the wind increased to a very heavy gale with clear weather.	14.....	29.10	29.00	28.90	20	21	16
Monday, 21st.....	N	Blowing heavy with clear weather. 3 P.M.--The wind veered to NNW blowing a gale.....	2	29.00	29.19	29.19	12	20	16
Tuesday, 22nd.....	N N W	Blowing a gale with clear weather. 6 A.M.--The gale moderated, wind N.....	2	29.40	29.69	29.74	10	15	13
Wednesday, 23rd.....	N E	Blowing strong with clear weather.....	3	29.44	29.40	29.40	15	21	17
Thursday, 24th.....	N N E	With a light breeze and clear weather.....	3	29.29	29.30	29.30	15	19	16
Friday, 25th.....	N E	With a fresh breeze and clear weather, wind light and variable during the afternoon.....	3	29.40	29.50	29.50	14	16	15
Saturday, 26th.....	N W	With a fresh breeze and clear weather.....	29.49	29.49	29.49	12	19	17
Sunday, 27th.....	N W	With a light breeze and clear weather. 8 A.M.--A shift of wind to S blowing strong 3 P.M.--Wind S E blowing a gale with snow.....	5	29.19	29.00	28.90	20	28	26
Monday, 28th.....	S E	Blowing a gale with snow. 1 A.M.--A shift of wind to W, the gale moderating with clear weather and a strong breeze.....	2	28.80	28.80	28.80	25	26	24
Tuesday, 29th.....	W N W	Blowing strong with clear weather.....	2	28.99	29.00	29.09	17	18	12
Wednesday, 30th.....	W	Blowing strong with clear weather.....	1	29.39	29.49	29.59	7	10	12

78 shots fired, 2 lbs each, making 156 lbs of powder.

Oil consumed this month, 42 gallons.

Argand Cotton Wicks used this month, 5.

Concentric Wicks used this month, 1 1/4 yds.

Quill Tubes used this month, 78.

Stores expended from the 1st January, 1859 to 1st January, 1860.

4137 pounds of powder,

295 gallons of oil,

3 1/2 dozen of Argand Cotton Wicks,

1228 Quill tubes,

11 1/4 yards of Concentric Cotton Wick,

214 1/2 yard of flannel for cartridge bags,

15 Crystal Chimneys broken.

METEOROLOGICAL REPORT, &c.—Continued.

Direction of Wind.	REMARKS.	Guns fired in 24 hours.	Icebergs, when seen.	Rise and Fall of the Barometer.			Thermometer Outside.		
				Sunrise.	Noon.	Sunset.	Sunrise.	Noon.	Sunset.
DEC., 1859.									
Thursday, 1st.....	W								
Friday, 2nd.....	Variable.		1	29.29	29.30	29.34	20	30	28
Saturday, 3rd.....	N		1	29.00	29.19	29.29	23	24	16
Sunday, 4th.....	N			29.39	29.40	29.50	6	5	Zero
Monday, 5th.....	N		2	30.30	30.10	30.19	12	9	10
Tuesday, 6th.....	Variable.		3	30.10	39.09	30.00	5	7	9
Wednesday, 7th.....	S W		3	29.50	29.80	29.80	7	15	13
Thursday, 8th.....	S W		3	29.50	29.49	29.40	15	28	29
Friday, 9th.....	N E		3	29.10	29.10	29.00	32	36	27
Saturday, 10th.....	N E			29.05	29.09	29.14	10	10	7
Sunday, 11th.....	E			29.60	29.69	29.69	3	7	10
Monday, 12th.....	E			29.39	29.30	29.04	12	18	20
Tuesday, 13th.....	S W			28.79	29.10	29.30	20	25	23
				29.20	29.34	29.50	25	23	18

Wednesday, 14th.	W	Blowing fresh with clear weather. The Strait and as far seaward as can be seen from here is one sheet of ice. I shall not again refer to the field ice until it breaks up in the spring.	1	29.89	29.90	30.00	12	15	12
Thursday, 15th.	S E	Blowing fresh with clear weather.	3	29.80	29.60	23.59	15	27	26
Friday, 16th.	S E	Blowing fresh with rain and fog. From this date I discontinue to exhibit the light.	3	29.39	29.30	29.40	24	30	28
Saturday, 17th.	W N W	8 P.M.—A shift of wind to W with clear weather. 4 P.M.—A shift of wind to N E with a light breeze.		29.50	29.70	29.80	22	25	21
Sunday, 18th.	E	Blowing strong with clear weather. 8 A.M.—Snow. 10 A.M.—The wind increased to a gale with heavy snow.		29.60	29.40	29.39	19	13	13
Monday, 19th.	E	Blowing a gale with snow. 8 A.M.—Less wind with wet hazy weather.		29.39	29.40	29.44	20	25	22
Tuesday, 20th.	Calm.	With wet snow. 2 P.M.—A light breeze from NW with snow.		29.10	29.10	29.10	23	28	27
Wednesday, 21st.	Calm.	With wet fog. 1 P.M.—Wind E. 4 P.M.—Blowing a gale with snow. 11 P.M.—Wind veered to NE with clear weather.	2	28.90	28.54	28.39	26	25	24
Thursday, 22nd.	N E	Blowing a gale with snow. 6 A.M.—Less wind from NNW with clear weather.	2	28.69	28.70	28.80	23	27	23
Friday, 23rd.	N W	With a fresh breeze and clear weather. 3 P.M.—Wet snow. 10 P.M.—Clear weather.		28.80	28.80	28.89	22	20	17
Saturday, 24th.	N W	With a light breeze and clear weather. 10 P.M.—A shift of wind to SE with snow.	2	28.94	28.94	28.94	5	7	3
Sunday, 25th.	E	Blowing a gale with snow. 4 P.M.—Less wind.		28.39	28.30	28.30	10	15	17
Monday, 26th.	N E	Blowing heavy with showers of snow. 2 P.M.—Wind N.		28.60	28.79	28.90	13	10	6
Tuesday, 27th.	N E	With a fresh breeze and wet snow. 11 P.M.—Blowing heavy.		29.09	29.00	28.94	7	15	12
Wednesday, 28th.	E	Blowing a heavy gale with snow.		28.79	28.60	28.60	10	12	8
Thursday, 29th.	N E	Blowing a gale with snow. 3 P.M.—Less wind.		28.80	28.99	29.14	7	16	12
Friday, 30th.	N E	With a light breeze and clear weather.		29.34	29.39	29.39	15	28	25
Saturday 31st.	S S E	With a light breeze and snow.		29.14	29.10	28.99	24	25	24

• Oil consumed this month, 24 gallons.

Concentric cotton wick consumed this month, 1½ yards.

Argand cotton wicks consumed this month, 4.

METEOROLOGICAL REPORT, &c.—(Continued.)

JANY, 1860.	Direction of Wind.	Description	Guns fired in 24 hours.	Icebergs, when seen.	Rise and Fall of the Barometer.			Thermometer Outside.		
					Sunrise.	Noon.	Sunset.	Sunrise.	Noon.	Sunset.
Sunday, 1sth.....	W	Blowing strong with clear weather. 3 P.M.—The wind increased to a gale with showers of snow.			28.60	28.50	28.49	14	13	12
Monday, 2nd.....	N W	With a light breeze and clear weather. 5 P.M.—A shift of wind to E blowing a gale with snow.			28.50	28.50	28.40	12 B	Zero	6
Tuesday, 3rd.....	N E	Blowing a heavy gale with snow. 2 P.M.—Clear weather with less wind.			28.79	28.90	29.10	12	20	17
Wednesday, 4th.....	S E	With a light breeze and clear weather. 1 P.M.—A fresh breeze from SW. The field ice is stationary, no clear water to be seen from here.			29.40	29.30	29.20	12	20	18
Thursday, 5th.....	N E	With a light breeze and clear weather.		2	29.10	29.0	28.99	13	10	4
Friday, 6th.....	W	Blowing heavy with clear weather.			29.0	28.90	29.10	9 B	Zero	Zero
Saturday, 7th.....	W	With a light breeze and clear weather.		3	29.20	29.20	29.24	12	20	18
Sunday, 8th.....	W	Blowing strong with snow. 6 A.M.—Clear weather with the wind light from NW.			29.0	29.10	29.29	25	28	25
Monday, 9th.....	E	Blowing strong with clear weather. 8 A.M.—Wind N E blowing a gale with snow. 1 P.M.—Clear weather with less wind.			29.9	29.10	29.30	5	4	4
Tuesday, 10th.....	N W	With a light breeze and clear weather.		3	29.79	29.80	29.80	10 B	Zero	Zero
Wednesday, 11th.....	S W	With a fresh breeze and clear weather. 3 P.M.—Snow, blowing a gale.		3	29.50	29.20	28.79	9	20	24
Thursday, 12th.....	S W	Blowing a gale with snow. 8 A.M.—Less wind from NE with clear weather.		3	29.0	29.10	29.20	12 B	14 B	16 B
Friday, 13th.....	W	Blowing strong with clear weather.		3	29.19	29.19	29.39	20 B	10 B	7 B
Saturday, 14th.....	W	Blowing a strong breeze with clear weather.		3	29.39	29.29	29.10	10 B	3	5
Sunday, 15th.....	S W	With a fresh breeze and clear weather.		3	29.0	28.99	28.80	10	17	15
Monday, 16th.....	W	With a light breeze and clear weather. 2 P.M.—A shift of wind to NE blowing strong with snow.			28.59	28.79	28.99	15	20	13
Tuesday, 17th.....	Variable.	With light airs and clear weather. 11 A.M.—A fresh breeze from W. 10 P.M.—A sudden shift of wind to NNE, blowing a gale with snow.			29.0	28.90	28.89	14	28	25
Wednesday, 18th.....	N N E	Blowing a gale with snow. 10 A.M.—Clear weather with less wind. 5 P.M.—Calm.			28.60	28.70	28.99	8 B	5 B	5 B
Thursday, 19th.....	W	With a light breeze and clear weather, wind light and variable during the afternoon.			29.19	29.20	29.20	8 B	4 B	4 B
Friday, 20th.....	W	With a fresh breeze and clear weather.			29.10	29.9	29.0	15 B	8 B	5 B
Saturday, 21st.....	W	With a fresh breeze and snow, with light and variable during the afternoon with wet snow.			28.70	28.60	28.60	8	22	15
Sunday, 22nd.....	W	Blowing heavy with clear weather.			28.90	29.10	29.39	5 B	Zero	3 B
Monday, 23rd.....	S E	With a light breeze and clear weather.		2	29.59	29.60	29.60	3 B	4	4

Date	Wind	Weather	2	29.40	29.39	29.30	5	11	9
Tuesday, 24th...	N E	Blowing heavy with snow and heavy drift.	2	29.10	28.70	28.30	11	20	18
Wednesday, 25th.	S E	With a fresh breeze and clear weather. 10 A.M.—The wind increased to a gale with snow.	2	28.20	28.20	28.20	15	16	18
Thursday, 26th.	S E	Blowing a gale with snow. 5 A.M.—A shift of wind to W with clear weather.	2	28.50	28.50	28.70	16	18	11
Friday, 27th.	W N W	Blowing a gale with clear weather. 4 P.M.—Less wind.	2	28.80	28.80	28.90	9	10	10
Saturday, 28th.	W	Blowing fresh with clear weather.	2	29.00	29.04	29.20	Zero	5	3 B
Sunday, 29th.	W	Blowing strong with clear weather.	3	29.30	29.30	29.29	5	20	23
Monday, 30th.	S W	Blowing fresh with clear weather.	3	29.09	29.00	29.00	28	30	27
Tuesday, 31st.	W	Blowing strong with clear weather.	3						

METEOROLOGICAL REPORT, &c.—(Continued.)

R E M A R K S .

FEBY., 1860.	Direction of Wind.	Guns fired in 24 hours.	Icebergs when seen.	Rise and Fall of the Barometer.			Thermometer Outside.		
				Sunrise.	Noon.	Sunset.	Sunrise.	Noon.	Sunset.
Wednesday, 1st.	W	3	29.19	29.29	29.29	Zero	7 B	9 B
Thursday, 2nd.	W N W	With a fresh breeze and clear weather.	29.30	29.40	29.59	13 B	10 B	11 B
Friday, 3rd.	W	With a strong breeze and clear weather.	3	28.70	29.79	29.80	8 B	Zero	3 B
Saturday, 4th.	W	With a light breeze and clear weather.	3	28.84	29.84	29.84	2 B	5	2
Sunday, 5th.	Calm	With clear weather.	29.70	29.70	29.70	Zero	10	5
Monday, 6th.	W S W	With a light breeze and clear weather.	5	29.50	29.50	29.50	5	15	17
Tuesday, 7th.	S W	Blowing strong with snow. 4 P.M.—Light wind with rain and fog. 11 P.M.—Wind N with clear weather.	28.99	28.80	28.69	19	29	28
Wednesday, 8th.	N	With a fresh breeze and clear weather.	28.60	28.74	28.90	16	14	12
Thursday, 9th.	W N W	Blowing fresh with clear weather. 2 P.M.—Wind NW blowing heavy.	5	29.29	29.39	29.40	Zero	10	12
Friday, 10th.	S E	Blowing a strong breeze with clear weather. 2 P.M.—Wind E blowing a gale with snow.	29.00	28.70	28.50	15	19	19
Saturday, 11th.	N E	Blowing a heavy gale with snow.	4	28.00	27.99	27.90	20	16	12
Sunday, 12th.	N E	Blowing a gale with snow. 5 A.M.—A shift of wind to NW blowing strong with clear weather.	28.50	28.70	29.10	3	Zero	3 B
Monday, 13th.	W	With a fresh breeze and clear weather. 8 A.M.—A shift of wind to E blowing a gale with snow.	4	29.00	28.70	28.50	7 B	8 B	10 B
Tuesday, 14th.	E	Blowing a gale with snow. 5 A.M.—A shift of wind to W, the gale moderating with clear weather.	28.90	28.99	29.20	Zero	3 B	3 B
Wednesday, 15th.	W	With a light breeze and clear weather. 8 A.M.—A shift of wind to NE, blowing heavy with snow. 11 A.M.—The wind increased to a heavy gale.	29.40	29.00	28.80	7 B	Zero	4 B
Thursday, 16th.	E	Blowing a gale with snow. 6 A.M.—A sudden shift of wind to W, blowing a gale with snow. 4 P.M.—Less wind with clear weather.	28.79	28.79	29.09	5	10	17
Friday, 17th.	W	With a light breeze and clear weather. 7 A.M.—A shift of wind to E, blowing strong.	4	29.59	29.40	29.20	10	15	18
Saturday, 18th.	E S E	Blowing strong with heavy rain. 4 P.M.—A shift of wind to SW, blowing a gale with wet snow. 10 P.M.—Less wind with clear weather.	28.70	28.60	28.80	25	32	27
Sunday, 19th.	W S W	With a fresh breeze and clear weather. 5 P.M.—A shift of wind to NE blowing heavy with snow.	28.99	28.90	28.59	23	27	25
Monday, 20th.	S W	Blowing a gale with rain. 3 P.M.—The wind veered to W blowing a heavy gale with clear weather. 6 P.M.—Less wind.	3	28.39	28.49	28.60	23	19	15

Tuesday, 21st...	W	Blowing strong with clear weather	4	29.00	29.20	29.40	10	13	8
Wednesday, 22nd...	N W	Blowing strong with clear weather	4	29.49	29.50	29.50	7	16	18
Thursday, 23rd...	S W	Blowing strong with heavy rrin and thick weather. 8 P.M.—A shift of wind to E blowing a gale with sleet.							
Friday, 24th...	N E	Blowing a gale with snow. 4 P.M.—Less wind with clear weather.							
Saturday, 25th...	N N W	With a light breeze and clear weather.	4	28.70	28.59	28.59	25	30	32
Sunday, 26th...	W	Blowing strong with clear weather.	4	28.60	28.70	28.99	12	11	9
Monday, 27th...	W	With a fresh breeze and clear weather.	4	29.29	29.30	29.40	3	3	2 B
Tuesday, 28th...	N N W	With a light breeze and clear weather. 3 P.M.—Blowing strong.	4	29.50	29.40	29.40	9 B	5 B	3 B
Wednesday, 29th...	W N W	With a light breeze and clear weather.	4	29.39	29.50	29.59	5	11	7
			4	29.80	29.74	29.74	3 B	10	9

Stores consumed this month.—1½ gallons of Oil.

METEOROLOGICAL REPORT, &c.—(Continued).

R E M A R K S .

MARCH, 1860.	Direction of Wind.	(Guns fired in 24 hours.	Iceberg, when seen.	Rise and Fall of the Barometer.			Thermometer Outside.		
				Sunrise.	Noon.	Sunset.	Sunrise.	Noon.	Sunset.
Thursday, 1st.	W		4	29.49	29.39	29.30	12	25	24
Friday, 2nd.	Calm.			29.10	28.70	28.59	26	28	27
Saturday, 3rd.	N E			28.30	28.40	28.80	27	28	26
Sunday, 4th.	N W			28.84	28.84	28.49	22	27	26
Monday, 5th.	S W			28.20	28.40	28.50	22	13	9
Tuesday, 6th.	W		4	28.79	28.90	29.00	2 B	9	7
Wednesday, 7th.	N W		4	29.20	29.39	29.49	3	10	6
Thursday, 8th.	Variable.		4	29.59	29.59	29.50	7	19	16
Friday, 9th.	S E			29.09	29.09	29.20	15	27	26
Saturday, 10th.	S E			28.80	28.80	28.89	25	36	28
Sunday, 11th.	S W		4	28.90	28.90	28.94	26	30	20
Monday, 12th.	W		5	29.00	29.20	29.29	23	26	24
Tuesday, 13th.	W			29.49	29.39	29.30	18	26	22
Wednesday, 14th.	Variable.			29.39	29.30	29.19	16	27	23
Thursday, 15th.	N E		5	29.00	29.20	29.40	3	7	5
Friday, 16th.	N W		5	29.40	29.40	29.40	9	20	19
Saturday, 17th.	W			28.49	29.49	29.49	20	29	27
Sunday, 18th.	Variable.								
Monday, 19th.	W		5	29.60	29.79	29.79	22	30	27
Wednesday, 20th.	Variable.		5	29.50	29.49	29.49	25	29	28
			5	29.40	29.20	29.19	20	34	30

Wednesday, 21st..	W	With a light breeze and fog. 10 A.M.—Clear weather, calm during the afternoon.	29.30	29.40	29.50	30	33	38
Thursday, 22nd..	S	With a strong breeze and fog.	29.49	29.49	29.90	31	38	33
Friday, 23rd..	S S E	Blowing strong with wet fog.	29.10	29.09	29.00	31	35	30
Saturday, 24th..	S S E	Blowing strong with wet fog. 10 A.M.—The wind veered to S with rain. 4 P.M.—Wind W with clear weather.	28.99	28.90	28.90	28	33	29
Sunday, 25th.....	S W	Blowing a fresh breeze with fog and wet snow. 11 A.M.—The wind veered to W blowing strong with clear weather.	5	28.70	28.74	28.90	27	30
Monday, 26th.....	W	Blowing a fresh breeze with clear weather.	5	29.00	29.10	29.20	27	33
Tuesday, 27th.....	Variable.	With light airs and clear weather.	5	29.30	29.30	29.20	26	32
Wednesday, 28th..	Variable.	With light airs and clear weather.	5	29.20	29.20	29.20	23	34
Thursday, 29th..	S W	With light breeze and fog. 11 A.M.—Clear weather.	5	29.00	28.90	28.80	24	33
Friday, 30th.....	W N W	Blowing heavy with clear weather, showers of snow during the afternoon.	5	28.70	28.79	28.90	17	16
Saturday, 31st...	W N W	Blowing strong with clear weather, the five icebergs that I have noted in the log have been aground all winter since the fall, but have increased considerably from the the heavy falls of snow and sleet.	5	29.00	29.00	29.09	5	16

Stores consumed this month.—2 Gallons of Oil.

METEOROLOGICAL REPORT, &c.—Continued.

APRIL, 1860.	Direction of Wind.	REMARKS.	Guns fired in 24 hours.	Icebergs, when seen.	Rise and Fall of the Barometer.			Thermometer Outside.		
					Sunrise.	Noon.	Sunset.	Sunrise.	Noon.	Sunset.
Sunday, 1st.....	S E	Blowing heavy with snow. 10 A.M.—Clear weather. From this date I commence to exhibit the light.	5		28.90	28.90	29.00	12	22	21
Monday, 2nd.....	S W	Blowing strong with clear weather. 3 A.M.—Light snow and fog. 11 A.M.—Clear weather. 8 P.M.—Rain and fog occasionally, and blowing strong from W.	12		28.80	28.80	28.79	22	32	29
Tuesday, 3rd.....	W	Blowing strong with rain. 4 A.M.—A sudden shift of wind to N.E., blowing a gale with snow. 2 P.M.—Less wind from N with clear weather. 5 P.M.—A shift of wind to W, blowing strong. There has been a deal of packed ice driven into the Strait from the N by the last gale of N.E. winds.	15		28.60	28.60	28.99	15	17	14
Wednesday, 4th.....	W S W	Blowing heavy with clear weather. Calm during the afternoon.			29.19	29.11	29.19	12	29	24
Thursday, 5th.....	N W	With light breeze and a clear weather.			29.20	29.15	29.19	21	27	22
Friday, 6th.....	E N E	Blowing strong with clear weather.			29.30	29.33	29.40	17	23	21
Saturday, 7th.....	E N E	Blowing a strong breeze with clear weather.			29.44	29.49	29.50	20	25	22
Sunday, 8th.....	Calm	With hazy weather. 9 A.M.—Strong breeze from W with clear weather.	1		29.40	29.40	29.40	26	31	23
Monday, 9th.....	S W	With a fresh breeze and clear weather. 9 A.M.—Wet snow. 5 P.M.—A sudden shift of wind to N.E., blowing a gale with snow.	11		29.30	29.29	29.10	26	33	26
Tuesday, 10th.....	N E	Blowing a gale with snow. 2 A.M.—Clear weather with less wind from W.N.W.	1		29.29	29.39	29.40	10	26	23
Wednesday, 11th.....	S W	With a fresh breeze and clear weather. 10 A.M.—Blowing strong with snow.	9		29.40	29.30	29.10	21	28	25
Thursday, 12th.....	S W	With a light breeze and snow. 9 A.M.—A shift of wind to N.E. blowing a gale with snow. 5 P.M.—Clear weather with less wind.	17		28.90	28.90	29.19	25	26	18
Friday, 13th.....	Variable.	With light airs and clear weather. 2 P.M.—A fresh breeze from S.W.			29.39	29.40	29.40	6	24	20
Saturday, 14th.....	S	Blowing strong with hazy weather. 3 P.M.—The wind veered to S.E., with light snow. 6 P.M.—A Brigantine passed, going to the S, the first vessel that passed here this spring.	4		29.20	29.19	29.00	22	23	20
Sunday, 15th.....	E S E	Blowing a strong breeze with snow. 8 A.M.—Clear weather. 10 A.M.—Snow. 6 P.M.—A shift of winds to W, blowing a gale with snow.	16		28.60	28.40	28.29	26	29	24
Monday, 16th.....	W N W	Blowing a gale with snow. 3 P.M.—Clear weather. Three Brigs and two Brigantines passed going to the S.	2		28.60	28.60	29.20	23	33	27
Tuesday, 17th.....	W	With a light breeze and clear weather. 3 P.M.—Blowing strong from S.W. Two brigs in sight seal fishing.	6		29.49	29.59	29.40	17	39	27
Wednesday, 18th.....	S S E	Blowing strong with clear weather. 2 A.M.—The wind increased to a gale with snow. 4 P.M.—Less wind with fog.	23		29.00	28.94	28.94	26	30	25

Thursday, 19th...	S S E	Blowing strong with fog. 6 A.M.—The wind veered to E, blowing a gale with wet snow. 4 P.M.—Less wind with fog occasionally.	18	28.70	28.70	28.80	25	33	37
Friday, 20th.....	S E	Blowing a strong breeze with fog occasionally. 10 A.M.—Four Brigs and six Schooners passed to the N seal fishing.	6	29.10	29.29	29.40	25	30	28
Saturday 21st....	S E	With a light breeze and clear weather. 7 A.M.—The wind veered to ENE, blowing heavy with wet snow. 3 P.M.—Heavy rain.	13	29.20	29.11	29.19	24	33	30
Sunday, 22nd....	E	Blowing heavy with fog. 10 A.M.—Heavy rain. 4 P.M.—The wind veered to NE, blowing a gale with sleet.	24	29.99	28.90	28.19	33	33	31
Monday, 23rd....	E	Blowing a severe gale with thick weather and snow. 8 A.M.—Rain. 11 P.M.—Clear weather with less wind.	23	28.40	28.54	28.50	33	35	30
Tuesday, 24th....	E	Blowing strong with clear weather. 4 A.M.—Fog, rain and wet snow occasionally.	19	28.54	28.59	28.70	30	33	29
Wednesday, 25th.	N E	Blowing strong with wet snow and thick weather.	20	28.70	28.70	28.69	30	34	30
Thursday, 26th....	E N E	Blowing a strong breeze with wet snow and thick weather occasionally.	12	28.79	28.79	28.80	29	37	33
Friday, 27th....	N E	Blowing strong with hazy weather. 4 P.M.—Clear weather.	11	29.10	29.24	29.40	28	38	29
Saturday, 28th...	Variable.	With light airs and clear weather. The Strait is completely blocked up with packed ice driven in by the late E and NE wind. The Strait had been sufficiently clear of field ice for vessels to pass through it from the 18th March to the 24th of this month.							
Sunday, 29th....	Variable.	With light airs and clear weather. 2 P.M.—A fresh breeze from W.	11	29.50	29.50	29.59	25	39	30
Monday, 30th....	W	With a fresh breeze and clear weather. 3 A.M.—Fog. 6 A.M.—Hazy weather. This month has been the most stormy that has been all Winter.	11	29.59	29.50	29.50	26	36	28
			3	29.49	29.44	29.44	25	31	30

249 shots fired, 3 lbs each, making 747 of powder.

Oil consumed this month, 28½ gallons.

Argand Cotton Wicks used this month, 8.

Concentric Wicks used this month, 2 yards.

All the Powder in store expended.

METEOROLOGICAL REPORT, &c.—(Continued.)

MAY, 1860.

R E M A R K S .

Direction of Wind.	Description	Guns fired in 24 hours.	Icebergs, when seen.	Rise and Fall of the Barometer.			Thermometer Outside.		
				Sunrise.	Noon.	Sunset.	Sunrise.	Noon.	Sunset.
Variable.	With light airs and clear weather. Two Brigs in sight. 3 P.M.—Light wind from E.	11	11	29.54	29.60	29.69	28	50	38
E	With a light breeze and clear weather. Two Brigs passed in the forenoon going to the S.	11	11	29.69	29.60	29.54	35	43	28
N E	Blowing a strong breeze with hazy weather.			29.44	29.50	29.50	27	43	35
E	With a fresh breeze and fog occasionally.			29.44	29.40	29.40	30	40	29
E	Blowing strong with fog. 8 P.M.—Rain.			29.30	29.50	29.29	30	49	31
E	Blowing strong with rain and thick weather. 10 A.M.—Fog. 5 P.M.—Clear weather.			29.30	29.34	29.40	29	38	34
E N E	Blowing strong with wet fog.			29.34	30.34	29.34	30	35	28
E	Blowing strong with wet fog. 4 P.M.—Rain and fog.			29.40	29.40	29.50	30	36	32
E	With a strong breeze and fog, clear weather occasionally during the afternoon. One Brig in sight at the edge of the ice, which only extends three miles outside lighthouse. The Strait is completely filled and the ice stationary.	14	14	29.60	29.60	29.60	31	38	33
E	With a light breeze and hazy weather. 7 A.M.—A shift of winds to W with a light breeze and fog. 2 P.M.—Clear weather with variable winds during the afternoon. Two Brigantines in sight.	15	15	29.64	39.64	29.49	30	38	35
N E	With light breeze and clear weather.	18	18	29.30	29.39	29.49	32	39	35
Variable.	With light airs and fog. 6 P.M.—A fresh breeze from W with rain.			29.46	29.30	29.20	33	44	33
W	Blowing strong with rain. 7 A.M.—A shift of winds to NE, blowing heavy with clear weather. 10 A.M.—The wind veered to E with snow and thick weather. 5 P.M.—Less wind with clear weather.	21	21	28.99	29.00	29.20	34	33	29
E	Blowing a strong breeze with hazy weather. 4 P.M.—The wind veered to NE with clear weather.	24	24	29.30	29.34	29.39	33	38	32
S E	Blowing a fresh breeze with wet snow. 11 A.M.—The wind veered E, blowing heavy with showers of snow. One Brig in sight at the edge of the ice.			29.30	29.34	29.49	30	35	30
E	Blowing heavy with snow and thick weather. 11 A.M.—Less wind with fog.			29.49	29.50	29.50	28	33	31
S	With a light breeze and fog. 10 A.M.—Calm with clear weather. 5 P.M.—A strong breeze from E with wet fog.			29.49	29.40	29.40	29	45	30
E	Blowing a fresh breeze with clear weather. Four Brigs in sight.	26	26	29.49	29.49	29.56	28	38	31

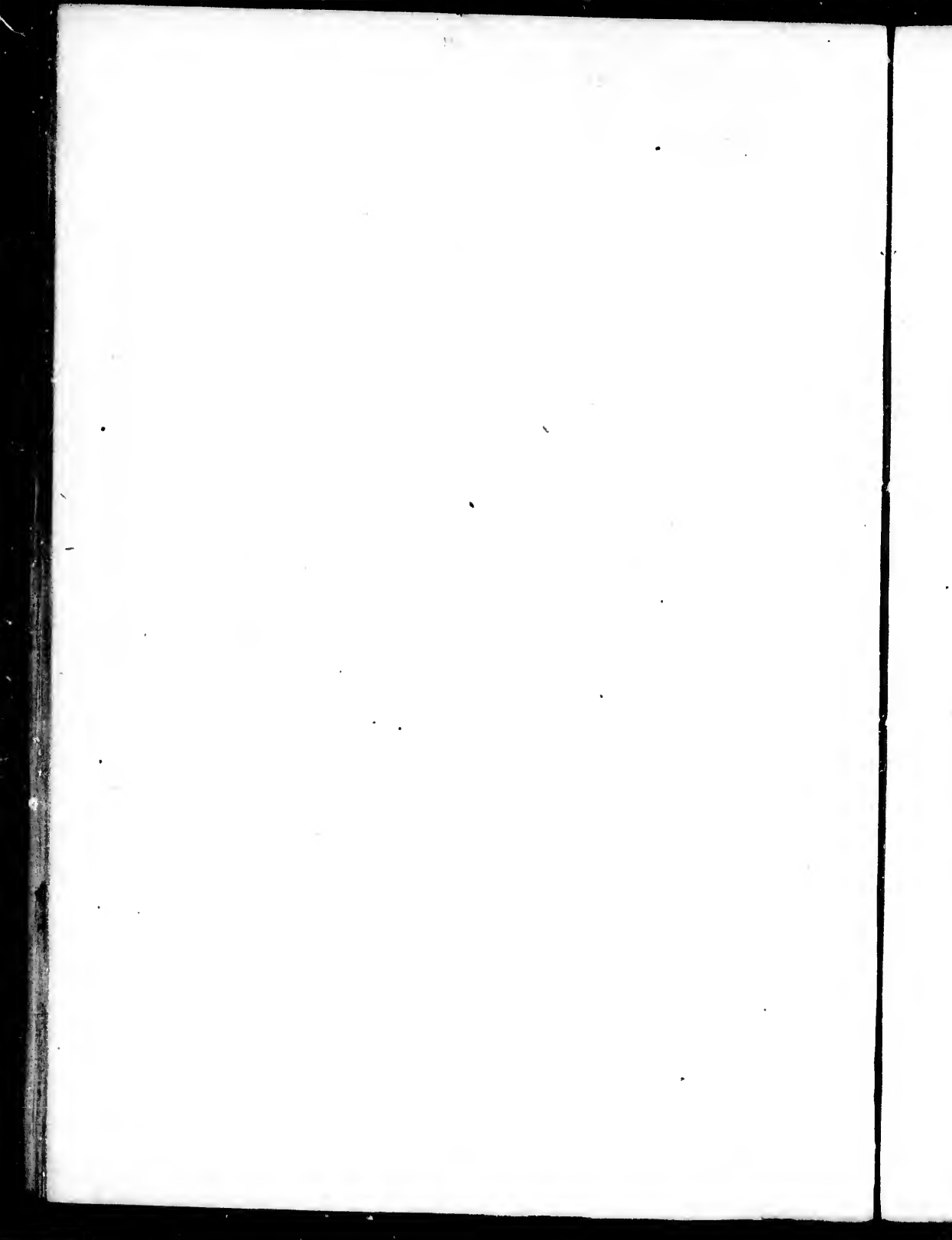
Saturday, 19th...	S	With light breeze and clear weather. Three Brigs in sight.....	26	29.44	29.40	29.40	26	39	29
Sunday, 20th.....	S	Blowing heavy with hazy weather. One Brig in the ice above the island.....		29.34	29.34	29.30	27	37	32
Monday, 21st.....	S E	Blowing heavy with wet fog.....		28.30	29.39	29.50	32	34	34
Tuesday, 22nd.....	S E	With fresh breeze and heavy weather. 3 P.M.—Wind E, blowing strong with snow.....		29.59	29.60	29.50	32	40	28
Wednesday, 23rd..	N E	Blowing strong with showers of snow occasionally. 1 P.M.—The wind increased to a gale with heavy snow.....		29.39	29.19	29.19	29	30	27
Thursday, 24th...	N E	Blowing heavy with snow and thick weather. 11 A.M.—The wind veered to E with heavy rain. 6 P.M.—Less winds with wet fog.....		29.20	29.30	29.40	30	34	32
Friday, 25th.....	E	Blowing heavy with wet fog. 3 P.M.—Hazy weather.....		29.40	29.40	29.49	29	39	35
Saturday, 26th...	E	Blowing heavy with hazy weather. 1 P.M.—Rain. 11 P.M.—Clear weather.....		29.39	29.34	29.40	28	40	34
Sunday, 27th.....	E S E	With a strong breeze and hazy weather. One square-rigged vessel passed inward bound at 6 P.M. The Strait is clear of field ice as far as can be seen from here with the hazy weather.....	23	29.49	29.49	29.39	35	39	35
Monday, 28th.....	E	Blowing strong with fog and rain. 11 A.M.—Hazy weather.....		29.29	29.30	29.44	33	38	35
Tuesday, 29th...	N E	Blowing strong with fog, light variable winds during the afternoon.....		29.49	29.49	28.50	29	41	36
Wednesday, 30th..	S	With a light breeze and fog.....		29.54	29.60	29.60	34	38	31
Thursday, 31st...	S	With a fresh breeze and wet fog. 5 P.M.—Clear weather with light variable winds.....	19	29.50	29.49	29.40	30	39	36

Stores consumed this month.

28 Gallons of Oil,

8 Argand Cotton Wicks.

14 Yards con. tric Cotton Wicks.



REPORT SECOND

ON THE

CURRENTS

OF THE

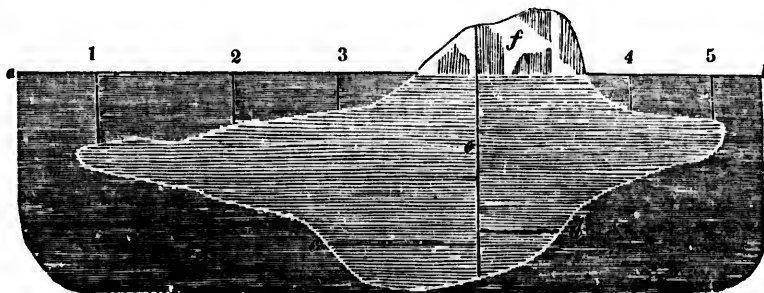
STRAIT OF BELLEISLE.

Hearing so much said of the dangers of the Strait of Belle Isle, I think it my duty to make a few remarks, having spent five years and thirty-seven days on that Island, and having had during that time an opportunity of visiting the greater number of harbours on the coast of Labrador, from Cape St. Charles to Quebec, which are numerous, and not more than ten miles apart, each harbour from Cape St. Charles to Mingan, and each of these harbours have a safe anchorage for coasting and fishing vessels, and many of them have safe anchorage for the largest vessels, which can be proved by referring to Admiral Bayfield's Chart, or book of Directions. And in the great extent of this north coast there are only three light-houses, one at Pointe des Monts, one at Pointe Amour at Forteau Bay, and one on Belle Isle Island. There is not on the whole extent of this coast a single beacor on any of those headlands or entrance to the different harbors, or a buoy on any of the dangerous rocks or shoals below pilot water, unless a few beacons on Anticosti. Now, I beg to suggest if there were bellbuoys near the different dangerous rocks and shoals, there would not be so many casualties. I would say there ought to be one on the Perroquets, one on the South Maquers Ledge, near Cape Whittle, one on the Mure, or St. Mary's Rock, outside grand Mascatina, another at the south end of Greenby island at west entrance straits of Belle Isle, and another on the Manicouagan shoal. It may be remarked with reference to these bellbuoys, that the cost of laying them down in spring, and removing them in the fall, would be very trifling, as there are inhabitants living ashore and abreast of these points, who with little else to do, at those seasons of the year, who would attend to them for very small remuneration. I have no hesitation in stating if there had been a bellbuoy on the Perroquets, neither the Clyde nor North Briton would have been wrecked on them; and as there is sufficient water on either side of the rocks named, for vessels of the largest class to pass, so that with a sharp look out a vessel would have timely warning from the tolling of the bell to put her helm a-starboard or port, as might be required to clear any of those rocks, as the shoal water extends but a short distance on either the south or north sides of the rocks named.

Beacons at the entrance of the different harbours and headlands would be of the greatest assistance to the number of vessels along this coast engaged in the fishing and coasting trade, as also to vessels bound to or from sea, for, in many instances the fogs or thick weather, which are so prevalent on the north coast, clear away for a short period, when the high lands in the rear are generally covered with fog; and there is so much sameness along the coast and the entrance to several of the harbours so named, that these beacons would enable masters of vessels to know their position. I have also, in many instances, seen vessels nearly through the Straits blown out to sea, when caught in the heavy westerly winds, and were there beacons or buoys at the headlands, masters of vessels would run for these harbours, and bring up until the gale abated sooner than be blown out to sea; and these same vessels that I speak of, kept too close to the Newfoundland coast. The masters, in such case, could not have been well acquainted with the Straits; they should always make short boards along the north shore, and not stand further to the southward than midchannel, to avoid the downward current and the thick weather which is so frequent along Newfoundland coast. In one instance, out of several that I have seen, was a ship and two barks. They were, at eight o'clock in the morning, fully twenty miles to windward of the Island, when the wind from the west increased to a gale, and at four o'clock that afternoon the ship and one of the barks were about five miles outside of the east end of the Island, under close reef-topsail and courses, drifting out to sea. The other bark kept close in with the north shore, making short boards, and holding her own until night, when she got the wind off the land, (this is generally the case when the wind is

from the West) which helped her through the Straits before morning. The ship and bark that kept the south shore aboard were fully fifteen miles outside the Island at daylight next morning. There being then less winds, the ship beat into the southward of the island, and the bark to the north—consequently, in the evening, the bark having still kept the north shore, she was fully twelve miles to windward of the ships, although the ship sailed three feet to the bark's two. This will show shipmasters not acquainted, the advantage of getting the north shore aboard when beating into the Straits of Belle Isle. As I have before stated, in my former report on the north shore in 1860, there are less fogs and better anchorage in many of the bays and harbours along the coast should masters of vessels require them, and there are fishermen at all these bays on the coast who would pilot vessels into safety for a small sum; and any master of a vessel that once entered any of these harbours, would not require a pilot the second time, for they are generally of easy access, or even without pilots masters of vessels could enter these harbours if they were properly beacons.

These beacons should have direction-boards on them, so as to direct shipwrecked sailors where inhabitants were to be found; for in all these bays and harbours, there are people settled, and living during the year. I beg now, for the information of ship masters, to make a few remarks respecting the sunken icebergs, which I paid particular attention to the last year I was on the Island. The smaller the icebergs appear above water, the greater the danger is in approaching them, for they have long, shelving, solid ice, extending under the surface of the water, from four to eight hundred feet, and some of them more. This I ascertained, by sounding on an iceberg that grounded near the light-house, about three and a half miles E.S.E. of the light. It remained aground from the middle of May until the 28th of June, when it got reduced by the washing of the sea, and drifted off the bank it was aground on, in thirty-three fathoms of water. When first seen by me, there was a small portion of it above water about thirty feet high, and one hundred feet at the level of the sea. This portion above the water, was washed away in a few days after I first perceived it. It was quite visible from the light-house, as the water over the iceberg appeared a light green, and around it the water was a dark green. When I passed over it in my boat, I sounded with an oar, and found about four feet. I did not, when in my boat, perceive any difference in the color of the water until I came close to it. I would strongly recommend ship masters, when in the locality of these icebergs, to keep a man at the mast-head; he will see in time the different colors of the water, to enable the vessel to keep clear of the iceberg, and from deck of the vessel, the different shades would not be perceptible in time to change the vessel's course. The second sunken iceberg I had an opportunity of examining, was driven into the Bay on the 18th of August, 1861. It grounded within four hundred yards of the landing, in thirty-one fathoms of water, and remained for about ten days, when it broke in two, and turned right over. The only way I can describe this sunken iceberg, is by giving a sketch of it.



- a Level of the water. The point under water from 6 to 700 feet.
 b Level of the water. This point under water 280 feet.
 c This line above water after capsizing 7 feet.
 d Line over water after capsizing 10 feet.
 e This vertical line shows where it broke in two pieces.
 f From 40 to 50 feet above the level of the Sea.
- | | | | |
|---|----------------|----|-------|
| 1 | Depth of water | 9 | feet. |
| 2 | " | 6½ | " |
| 3 | " | 3 | " |
| 4 | " | 3 | " |
| 5 | " | 5 | " |

Many persons are under the impression that the greater number of icebergs drift into the Strait of Belle Isle. It is not the case. For the ten icebergs that enter the Strait, there are fifty pass

to the southward, in the locality of the Banks of Newfoundland and Cape Race, and in the track of vessels bound to and from the St. Lawrence, and other North American ports. And these icebergs that drift to the southward, are much the smallest, for the banks in the offing, outside Belle Isle Island, intercept the largest of them. I have seen as many as a hundred at a time, aground on this bank, in the month of May, and some of them half a mile long, and fully four hundred feet above the level of the sea. And there is every reason to believe that many of the number of missing ships, that we hear of every year, are lost on these icebergs, in the vicinity of the banks. I would, in all instances, recommend vessels bound into the Strait, after the 15th of June, to pass to the north of the Island, and keep the north shore aboard, until clear of the Strait, as the fogs generally come on so quickly along the Newfoundland coast. As I have stated, in my former report, that fully half the time of these fogs, up to the middle of the Strait and along the south coast, it is clear along the north Shore, and I have been told by fishermen from Newfoundland, that the fogs are more prevalent during the summer months on the banks and locality of Cape Race than along the Labrador coast.

The most essential places for lights, in the Strait, would be, one on South Battle Island, and one on Cape Norman, on the Newfoundland coast. Each of these light-houses, as also those on the coast, should have fog-whistles attached to them.

The fog-whistle is much superior to the gun, as I have often, during my time on Belle Isle, heard the fog-whistle of the Mail-steamers quite distinctly, and could scarcely hear the report of the gun fired by them at the same time. If these fog-whistles were adopted, and at the different light-houses, beacons and entrances to the harbors along the Labrador coast, they would save many lives and a great deal of property.

After heavy gales of wind from the Eastward which very often last from four to six weeks in the fall and spring of the year, the water is forced up in the straits, gulf and river, that tides do not ebb more than half its ordinary fall, in moderate weather as it does during the summer months.

And the moment wind shifts to the W, or those points having westing in them the current comes down with great force and is influenced by the wind, through those different estuaries;—should the wind above mentioned come from the "North West" or W.N.W. the current sets much stronger on the south shore both in the straits of Belle Isle and the gulf of St. Lawrence, I would therefore recommend to ship masters, in the trade, to make allowances in their course, either in, or outward bound, taking notice of the above remarks. I would also remark that during my time on "Belle Isle," I found the compass very much affected by local attraction, as there is a great quantity of iron ore on the island. This I mentioned to Captain Olebar of the R. N. when surveying round the Island in 1859, he said he found I was correct, at the same time said it was the first time he had landed on the Island although he had been round the Island with Admiral Bayfield during the summer they were surveying on the coast of Labrador, but never landed on Belle Isle. As in many instances, masters of vessels have not much time to look over their charts or book of directions, in thick blowy weather, I will now give them the course and distance N latitude and W longitude of the Labrador coast from Cape St. Lewis to the light ship in the Traverse, as also from St. Paul's Island up the gulf to the said Lightship taken correctly from Admiral Bayfield's chart and book of directions.

Any shipmaster who pays proper attention to his marine barometer, is certain some hours before to get positive indication of an approaching change in the weather in sufficient time to shorten sail. During my residence of 5 years on the Island, I found this unerringly to be the

P. S.—It was neglected in the proper place in this report to state that on the east end of Red Island, more perhaps than at any other point of the St. Lawrence a Bellbuoy was required. Here more lives have been sacrificed and more property lost annually than in any other part of the river.

METEOROLOGICAL REPORT, &c.—(Continued).

OCT., 1869.	Direction of Wind.	REMARKS.	Guns fired in 24 hours.	Icebergs when seen.	Rise and Fall of the Barometer.			Thermometer Outside.		
					Sunrise.	Noon.	Sunset.	Sunrise.	Noon.	Sunset.
Monday, 1st.....	NW	With a light breeze and clear weather.—I arrived from Quebec this day, on board the steamer Napoleon,—took no note of the Barometer or Thermometer.			29.48	29.48	29.40	37	46	40
Tuesday, 2nd.....	W	2 P.M.—Wind increased to blow heavy from WSW.....								
Wednesday, 3rd...	SW	With a strong breeze and clear weather.								
Thursday, 4th.....	NNW	With a light breeze and thick weather with rain. 10 A.M.—A shift of winds to E, blowing strong with showers of hailstone, and snow occasionally. The steamer Napoleon arrived here from Chateau bay to discharge the remainder of the stores for the lighthouse.	3		29.30	29.18	29.25	4	38	37
Friday, 5th.....	NW	Blowing strong with showers of snow. The Napoleon left here at 3½ P.M. Four Brigantines passed going south during the afternoon. 4 P.M.—Less wind.....		1	29.35	29.40	29.60	29	38	36
Saturday, 6th.....	SE	With a fresh breeze and clear weather. 3 P.M.—A shift of wind to SE, blowing strong.....		1	29.65	29.65	29.60	27	36	32
Sunday, 7th.....	ESE	Blowing heavy with cloudy weather. 2 P.M.—The wind increased to gale. One crystal chimney broken.		1	29.50	29.45	29.40	30	39	35
Monday, 8th.....	E	Blowing a gale with heavy rain. 2 P.M.—The wind increased to a gale. One crystal chimney broken.	3		29.30	29.20	28.75	35	37	36
Tuesday, 9th.....	SW	Blowing a heavy gale. 3 A.M.—The gale moderated. 3 P.M.—The wind from S W, with fog. 4 P.M.—The wind veered to W, blowing strong. 7 P.M.—A steamship passed inward bound. 10 P.M.—Clear weather.....	20		28.60	28.65	28.55	32	43	38
Wednesday, 10th...	SW	With a fresh breeze and clear weather. 9 A.M.—A ship passed outward bound and three Brigantines going S. 10 A.M.—Rain and fog. 7 P.M.—Clear weather. 11 P.M.—Rain with thick weather.....	10		28.80	28.80	28.80	36	42	40
Thursday, 11th....	W	Blowing a strong breeze with rain. 4 A.M.—The wind veered to W. 8 A.M.—Clear weather. 6 P.M.—Blowing a heavy gale. One crystal chimney broken.....	2		28.80	28.85	28.80	40	42	39
Friday, 12th.....	SW	With a fresh breeze and clear weather. 3 P.M.—1 Brigantine passed going S. One crystal chimney broken.		1	28.30	29.45	29.40	36	42	40
Saturday, 13th...	SW	Blowing strong with fog and rain. 11 A.M.—The wind veered to W, blowing heavy with clear weather.....	9		29.38	29.10	29.00	42	46	44
Sunday, 14th.....	W	With a fresh breeze and clear weather. 18 Brigantines, 4 Brigs and 13 Schooners passed during the day going S.....			29.05	29.00	29.00	37	39	37
Monday, 15th....	W	Blowing strong with heavy weather.		1	29.29	29.30	29.42	30	37	35
Tuesday, 16th....	W	With a fresh breeze and clear weather. 4 P.M.—A steamship passed inward bound. 8 A.M.—A light breeze from SW, with fog. 1 P.M.—The wind veered to W, blowing a gale with clear weather. 10 P.M.—Less wind. 1 Brigantine passed going S, at 4 P.M.....	6		29.59	29.50	29.44	32	41	38
				1	29.05	28.94	28.82	38	46	37

Wednesday, 17th.	W	Blowing strong with hazy weather. One Brigantine passed going S at 11 A.M. One crystal chimney broken.	1	29. 0	29. 0	29.09	36	42	36
Thursday, 18th.	W	Blowing a fresh breeze with clear weather. 4 Brigatines and 2 Schooners passed going S. during the day.	1	29.30	29.39	29.39	34	37	35
Friday, 19th.	W	Blowing heavy with hazy weather. 4 P.M.—Blowing a gale. One crystal chimney broken.	1	29. 0	28.89	28.80	36	42	39
Saturday, 20th.	N W	Blowing heavy with clear weather. 6 P.M.—Less wind.	1	29.19	29.30	29.40	25	35	30
Sunday, 21st.	W N W	With a light breeze and clear weather. 3 A.M.—The wind increased to a severe gale with heavy weather.	1	29.10	29. 0	29.00	29	40	28
Monday, 22nd.	N N W	Blowing strong with clear weather.	1	29.10	29.19	29.19	29	35	30
Tuesday, 23rd.	N W	Blowing strong with clear weather. 7 A.M.—The wind veered to W, blowing a severe gale. 10 A.M.—1 Brig passed going S.	1	29.10	28.90	28.90	31	39	37
Wednesday, 24th.	W	Blowing a gale with clear weather. 4 A.M.—the gale abated with a sudden shift of wind to NE, with a fresh breeze.	1	29. 0	29.09	29.10	34	36	32
Thursday, 25th.	E	With a light breeze and clear weather. 2 P.M.—A shift of wind to SW, with a strong breeze.	1	29.35	29.39	29.39	26	35	32
Friday, 26th.	W	With a strong breeze and hazy weather. 4 A.M.—Wet fog. 11 A.M.—Clear weather, fog occasionally during the afternoon.	4	29.39	29.39	29.30	30	39	37
Saturday, 27th.	W	Blowing strong with hazy weather. 8 A.M.—Wet fog. 1 P.M.—Clear weather. 3 P.M.—A sudden shift of wind to E, blowing heavy with snow. 9 P.M.—The wind veered to NE, with clear weather. One crystal chimney broken.	10	29.09	29. 9	29.00	36	40	28
Sunday, 28th.	N	Blowing heavy with clear weather.		29.40	29.49	29.60	16	21	19
Monday, 29th.	N W	With a fresh breeze and clear weather. 11 A.M.—The wind veered to W, blowing heavy. 4 P.M.—2 Brigs passed outward bound.		29.70	29.59	29.40	20	28	20
Tuesday, 30th.	W	Blowing a strong breeze with clear weather. 7 A.M.—Rain and thick weather. 3 P.M.—Clear weather. At half-past 3 P.M.—The steamship Anglo Saxon passed outward bound.	4	29. 0	29.09	29.29	20	38	30
Wednesday, 31st.	W	Blowing strong with clear weather.		29.40	29.49	29.49	36	39	36

METEOROLOGICAL REPORT, &c.—(Continued.)

NOV., 1860.

R E M A R K S .

Direction of Wind.	Description of Wind.	Guns fired in 24 hours.	Icebergs, when seen.	Rise and Fall of the Barometer.			Thermometer Outside.		
				Sunrise.	Noon.	Sunset.	Sunrise.	Noon.	Sunset.
Thursday, 1st....	W	Blowing heavy with clear weather. 7 A.M.—Wet fog. 8 P.M.—A sudden shift of wind to NNE with clear weather.	13	29.39	29.30	29.29	35	40	37
Friday, 2nd.....	N N E	With a fresh breeze and clear weather. 7 P.M.—A shift of wind to NW with light breeze.		29.79	29.80	29.80	27	30	27
Saturday, 3rd....	W	With a fresh breeze and clear weather. 10 A.M.—A steamship passed outward bound		29.60	29.50	29.40	25	37	35
Sunday, 4th.....	Variable.	With light airs and clear weather.		29.50	29.51	29.59	29	37	29
Monday, 5th.....	S W	With a light breeze and clear weather. 6 A.M.—Fog. 4 P.M.—Clear weather. 10 P.M.—Fog.	13	29.39	29.29	29.20	31	38	36
Tuesday, 6th....	W	With a light breeze and fog. 6 A.M.—Clear weather. 9 A.M.—Fog. 1 P.M.—Clear weather.	10	29.29	29.30	29.39	35	39	36
Wednesday, 7th..	E N E	With a fresh breeze and clear weather. 4 P.M.—A steamship passed outward bound.	3	29.59	29.60	29.69	34	40	35
Thursday, 8th....	E	Blowing a strong breeze and clear weather.		29.69	29.69	29.59	30	34	32
Friday, 9th.....	E	Blowing heavy with rain. 3 A.M.—The wind increased to a gale. 9 A.M.—Wet fog	14	29.40	29.39	29.39	32	33	36
Saturday, 10th...	S E	Blowing a gale with rain and fog.	24	29.30	29.30	29.30	35	39	38
Sunday, 11th....	E S E	Blowing heavy with fog and rain. 3 A.M.—Clear weather. 9 A.M.—Fog occasionally. 3 P.M.—The wind increased to a gale with fog.	13	29.20	29.20	29.19	37	38	36
Monday, 12th....	E	Blowing a gale with rain. 7 P.M.—Thick weather.	6	29.00	29.00	28.90	36	36	35
Tuesday, 13th...	E	Blowing a gale with rain and thick weather occasionally.	13	28.35	28.90	29.00	35	37	36
Wednesday, 14th.	E	Blowing heavy with hazy weather. 3 P.M.—Heavy rain.	13	29.19	29.19	29.19	34	37	36
Thursday, 15th...	E	Blowing heavy with hazy weather. Steamship passed outward bound at 8 A.M.	2	29.10	29.10	29.10	32	36	35
Friday, 16th....	E	Blowing heavy with hazy weather. 3 A.M.—Rain. 8 P.M.—Heavy sleet with thick weather. 11 P.M.—Clear weather.	3	28.90	28.80	28.70	35	33	32
Saturday, 17th...	E	Blowing strong with clear weather. 8 A.M.—Rain. 11 A.M.—The wind veered to NE, blowing a gale with showers of snow.	10	28.50	28.49	28.39	31	30	29
Sunday, 18th....	N E	Blowing heavy with clear weather. 3 A.M.—A shift of wind to NNW with a fresh breeze		28.49	28.50	28.64	29	31	30
Monday, 19th....	W N W	Blowing strong with clear weather. 4 A.M.—A shift of wind to NE. 5 P.M.—The wind veered to SE with a fresh breeze and fog.	8	29.00	28.90	28.89	25	30	29

Tuesday, 20th.....	S	With a light breeze and clear weather. 6 A.M.—Wet snow with fog. 2 P.M.—The wind veered to SW with a strong breeze and clear weather. 7 P.M.—Rain and fog.	15	28.89	28.89	28.80	30	35	32
Wednesday, 21st..	S S W	Blowing strong with fog and rain. 2 A.M.—The wind veered to WSW with clear weather.	1	28.60	28.69	28.70	30	36	32
Thursday, 22nd..	W S W	With a light breeze and clear weather.		29.09	29.19	29.29	32	33	30
Friday, 23rd....	N N W	With a light breeze and clear weather.		29.60	29.64	29.70	21	26	24
Saturday, 24th..	S S W	With a fresh breeze and clear weather. 3 P.M.—Blowing strong from SSE.		29.70	29.69	29.60	25	32	30
Sunday, 25th....	S W	Blowing strong with rain. 8 A.M.—Fog with a light breeze. 7 P.M.—Wind W with clear weather.	12	29.09	29.09	29.10	33	43	39
Monday, 26th...	Variable.	With light airs and clear weather.		29.40	29.50	29.50	28	33	30
Tuesday, 27th...	W	Blowing a fresh breeze with clear weather. 3 A.M.—Wind WNW blowing strong. 8 A.M.—A steamship passed outward bound.		29.60	29.70	29.70	22	25	23
Wednesday, 28th.	W	With a fresh breeze and clear weather. 9 A.M.—The wind veered to SW blowing heavy with snow. 10 P.M.—The wind shifted to ESE.	14	29.30	29.00	28.99	20	27	26
Thursday, 29th..	E S E	Blowing heavy with snow and thick weather.	24	28.60	28.59	28.50	26	32	30
Friday, 30th.....	E E	Blowing a gale with rain. 3 P.M.—Thick weather and fog occasionally.	5	28.40	28.40	28.49	32	34	32

ALL INFORMATION CONTAINED HEREIN IS UNCLASSIFIED

METEOROLOGICAL REPORT, &c.—Continued.

DEC., 1860.	Direction of Wind.	REMARKS.	Guns fired in 24 hours.	Icebergs when seen.	Rise and Fall of the Barometer.			Thermometer Outside.		
					Sunrise.	Noon.	Sunset.	Sunrise.	Noon.	Sunset.
Saturday, 1st.	E N E	Blowing heavy with clear weather. 9 A.M.—Hazy weather.	1		29.09	29.20	29.29	29	35	32
Sunday, 2nd.	E S E	Blowing heavy with hazy weather. 11 A.M.—The wind increased to a gale. 4 P.M.—Snow.	9		29.09	28.90	28.79	31	34	30
Monday, 3rd.	E S E	Blowing heavy with snow. 3 P.M.—The wind veered to NE, with showers of snow occasionally.	7		28.60	28.60	28.60	29	32	30
Tuesday, 4th.	N E	Blowing strong with clear weather. 9 A.M.—Wet hazy weather. 3 P.M.—Clear weather.			28.59	28.69	28.79	28	32	30
Wednesday, 5th.	S S E	Blowing a fresh breeze with clear weather. 9 A.M.—Wet hazy weather.	12		29.00	29.00	28.90	29	33	31
Thursday, 6th.	E S E	Blowing a gale with wet snow. 4 P.M.—Clear weather with less wind. 7 P.M.—Snow.	20		29.40	29.20	29.10	30	32	30
Friday, 7th.	N E	Blowing a strong breeze with clear weather.			29.00	29.09	29.10	27	30	27
Saturday, 8th.	N	With a light breeze and clear weather.			29.10	29.09	29.09	17	24	18
Sunday, 9th.	N N W	With a fresh breeze and clear weather.			29.20	29.24	29.24	5	14	10
Monday, 10th.	W	With a light breeze and clear weather. 10 A.M.—Blowing strong.			29.29	29.20	29.20	5	20	16
Tuesday, 11th.	W S W	Blowing strong with clear weather. 4 P.M.—The wind veered to SSE, blowing a gale with snow.			29.10	28.99	28.70	16	26	23
Wednesday, 12th.	S S E	Blowing a gale with snow. 5 A.M.—Less wind from W. 8 A.M.—The wind increased to a severe gale with showers of snow occasionally.	8		28.10	28.10	28.20	22	27	22
Thursday, 13th.	W	Blowing a severe gale with clear weather. 1 A.M.—Less wind. 4 P.M.—Blowing a gale with showers of snow.	11		28.70	28.70	28.60	12	24	22
Friday, 14th.	W S W	Blowing a gale with clear weather. 2 A.M.—Less wind with a fresh breeze. 4 P.M.—Blowing heavy.			28.50	28.50	28.49	17	21	16
Saturday, 15th.	N W	Blowing strong with clear weather. From this date I discontinue to exhibit the light.			28.69	28.80	28.90	14	16	8
Sunday, 16th.	N N W	With a fresh breeze and clear weather. When the Thermometer is below zero I simply put the letter B, with the figures to denote it.			29.39	29.44	29.50	3 B.	Zero	4
Monday, 17th.	N W	Blowing a light breeze with clear weather. 7 A.M.—The wind veered to WSW, with snow. 10 A.M.—Clear weather.			29.20	29.14	29.19	7	24	22
Tuesday, 18th.	N W	With a fresh breeze and clear weather. 10 P.M.—Blowing heavy.			29.0	28.99	28.49	2 B.	3	Zero
Wednesday, 19th.	N W	Blowing a gale with snow. 9 A.M.—Less wind. 2 P.M.—Wind from E, with clear weather.			28.50	28.70	29.00	6	20	19

Thursday, 20th...	N E	Blowing heavy with clear weather.	29.30	29.28	29.29	17	27	26
Friday, 21st...	E	With a light breeze and wet hazy weather.	29.10	29.09	28.104	27	32	29
Saturday, 22nd...	S	With a fresh breeze and clear weather.	29.30	29.40	29.50	30	32	31
Sunday, 23rd...	S S E	Blowing strong with wet hazy weather.	29.50	29.59	29.59	29	35	34
Monday, 24th...	E S E	Blowing heavy with wet fog.	29.50	29.50	29.49	31	30	28
Tuesday, 25th...	E S E	Blowing a strong breeze with wet hazy weather. 3 P.M.—Blowing heavy with sleet.	29.40	29.34	29.30	27	30	28
Wednesday, 26th...	E S E	Blowing a strong breeze with hazy weather. 4 P.M.—Wind E, with clear weather.	29.34	29.39	29.40	27	32	30
Thursday, 27th...	E N E	With a strong breeze and light snow.	29.39	29.50	29.50	26	30	28
Friday, 28th...	E N E	Blowing strong with clear weather. 10 A.M.—Wind NE, blowing heavy.	29.69	29.60	29.60	24	25	24
Saturday, 29th...	N N E	Blowing a fresh breeze with clear weather. 2 P.M.—A light breeze from NW.	29.50	29.59	29.59	20	24	22
Sunday, 30th...	W N W	With a fresh breeze and clear weather.	29.50	29.59	29.59	20	26	24
Monday, 31st...	W N W	Blowing strong with clear weather.	29.30	29.30	29.10	25	29	27
Tuesday, 31st...	W N W	Blowing strong with clear weather.	29.30	29.30	29.10	25	29	27



METEOROLOGICAL REPORT, &c.—(Continued.)

JANUARY, 1861.	Direction of Wind.	Description.	Guns fired in 24 hours.	Icebergs, when seen.	Rise and Fall of the Barometer.			Thermometer Outside.		
					Sunrise.	Noon.	Sunset.	Sunrise.	Noon.	Sunset.
Tuesday, 1st....	N W	Blowing strong with clear weather. This is the first winter since I have been on this island, that there have been no icebergs aground in the Strait; there are generally from three to four every winter.			29.00	29.10	29.10	10	6	5
Wednesday, 2nd..	N W	With a light breeze and clear weather.			29.10	29.09	29.00	4 B	Zero	2 B
Thursday, 3rd...	N W	With a light breeze and clear weather. A good deal of field ice in the Strait. The first that has made this fall.			29.20	29.30	29.34	9 B	Zero	5 B
Friday, 4th.....	N W	With a light breeze and clear weather. 7 A.M.—A shift of wind to E, blowing heavy with snow. 4 P.M.—The wind increased to a gale.			29.24	28.90	28.80	5 B	Zero	2
Saturday, 5th....	E	Blowing a gale with snow. 5 A.M.—The gale abated, with a shift of wind to NW, with a light breeze and clear weather.			29.10	29.10	29.10	Zero	3	5
Sunday, 6th.....	W N W	With a light breeze and clear weather. Calm during the afternoon.			29.10	29.10	29.10	3	5	5 B
Monday, 7th.....	N	With a light breeze and clear weather. This is the first day this fall that a sailing vessel could not pass through the Strait with field ice.			29.20	29.20	29.24	10 B	8 B	12 B
Tuesday, 8th....	W N W	With a light breeze and clear weather. Calm during the afternoon.			29.30	29.29	29.29	15 B	9 B	10 B
Wednesday, 9th..	N N E	With a light breeze and clear weather.			29.19	29.19	29.29	12 B	6 B	8 B
Thursday, 10th..	E	With a light breeze and hazy weather. 10 A.M.—The wind veered to SE, with wet snow.			29.39	29.39	29.34	5 B	10	15
Friday, 11th....	S S W	Blowing strong with snow. 10 A.M.—The wind increased to a severe gale with heavy rain. 10 P.M.—The wind veered to W, with clear weather.			28.50	29.29	28.20	17	32	35
Saturday, 12th...	W	Blowing a heavy gale with clear weather. 4 P.M.—Less wind with showers of snow occasionally.			28.50	28.80	28.90	15	16	14
Sunday, 13th....	N W	With a light breeze and clear weather. 8 A.M.—A shift of wind to NE, blowing heavy with heavy snow. 11 A.M.—The wind increased to a gale.			29.09	28.70	28.59	12	7	3
Monday, 14th....	W F W	Blowing strong—with snow. 2 P.M.—Clear weather.			28.84	28.99	29.00	3 B	10	8
Tuesday, 15th....	N	With light breeze and clear weather. 2 P.M.—The wind veered to NE, with a strong breeze.			29.14	29.19	29.10	9	12	11
Wednesday, 16th.	N E	Blowing strong with showers of snow. 10 A.M.—The wind increased to a gale.			29.19	29.10	29.10	9	13	11
Thursday, 17th...	N E	Blowing a gale with showers of snow occasionally. 2 P.M.—The gale abated with heavy weather.			29.10	29.09	29.09	2 B	Zero	3 B

			29.84	29.80	29.79	8.B.	1.B.	3.B.
Saturday, 18th...	N N E	Blowing heavy with clear weather. No clear water to be seen in the Strait, or as far seaward as can be seen from here. I shall not again notice the field ice until it breaks up in the spring.	29.84	29.80	29.79	8.B.	1.B.	3.B.
Sunday, 19th.....	N N W	Blowing heavy with light snow, and thick hazy weather. 8 A.M.—Shift wind to E, blowing a gale with heavy snow.	28.59	28.50	28.39	2.B.	11	10
Monday, 20th.....	E	Blowing a gale with heavy snow. 7 A.M.—Less wind with wet snow.	28.34	28.34	28.34	12	30	27
Tuesday, 21st.....	N E	Blowing strong with cloudy weather. 10 A.M.—Blowing heavy.	28.34	28.39	28.40	23	27	25
Wednesday, 22nd...	N E	Blowing heavy with clear weather.	28.70	28.80	28.84	16	19	17
Thursday, 23rd...	N E	Blowing strong with clear weather.	29.09	29.10	29.19	11	14	11
Friday, 24th.....	N N W	With a light breeze and clear weather. 2 P.M.—Wind NW.	29.39	29.50	29.50	8	15	12
Saturday, 25th...	N N W	With a fresh breeze and clear weather. 2 P.M.—The wind veered to SW, blowing strong with snow.	29.30	29.10	28.90	13	23	23
Sunday, 26th.....	S W	With a light breeze and wet snow. 4 A.M.—A sudden shift of wind to NE, blowing a severe gale with snow. 3 P.M.—Clear weather. 8 P.M.—The gale moderated.	28.50	28.79	28.99	15	11	5
Monday, 27th.....	N E	Blowing a fresh breeze with clear weather. 3 P.M.—Wind ENE.	29.29	29.30	29.20	Zero	5	4
Tuesday, 28th.....	E	Blowing a fresh breeze with clear weather.	29.14	29.10	29.09	3	9	7
Wednesday, 29th...	E	Blowing a light breeze and clear weather.	29.09	29.10	29.14	4	11	7
Thursday, 30th...	N	With a light breeze and snow. 1 P.M.—Clear weather with light variable winds during the afternoon.	29.20	29.24	29.24	9	15	11
Friday, 31st.....	S E	Blowing a gale with snow. 3 P.M.—The gale moderated with a shift of wind to WSW, and clear weather.	28.50	28.40	28.49	14	25	2

METEOROLOGICAL REPORT, &c.—(Continued).

FEBY, 1861.	Direction of Wind.	Remarks.	Guns fired in 24 hours.	Icebergs, when seen.	Rise and Fall of the Barometer.			Thermometer Outside.		
					Sunrise.	Noon.	Sunset.	Sunrise.	Noon.	Sunset.
Friday, 1st.....	N W	Blowing strong with clear weather.....			28.60	28.89	29.09	19	23	18
Saturday, 2nd.....	Variable	With light airs and clear weather.....			29.29	29.40	29.49	15	18	16
Sunday, 3rd.....	S S W	With a light breeze and wet snow. 7 P.M.—A shift of wind to W, blowing heavy with clear weather.....			28.89	28.60	28.59	13	27	25
Monday, 4th.....	N W	Blowing strong with clear weather.....			29.20	29.28	29.30	Zero	5	3
Tuesday, 5th.....	N W	Blowing a strong breeze with clear weather.....			29.20	29.14	29.20	4	12	11
Wednesday, 6th.....	Variable	With light airs and clear weather. 3 P.M.—A strong breeze from SSW, with snow.....			29.30	29.20	28.94	7	21	17
Thursday, 7th.....	S S W	Blowing strong with snow. 8 A.M.—Clear weather. 9 P.M.—The wind veered to SSE, blowing a gale with sleet.....			28.80	28.74	28.50	15	25	23
Friday, 8th.....	S E	Blowing a heavy gale with hailstone. 11 A.M.—A sudden shift of wind to W, blowing very severe gale with sleet.....			27.00	27.24	28.00	22	15	Zero
Saturday, 9th.....	W N W	Blowing a heavy gale with hailstone. 10 A.M.—Clear weather,—still blowing a severe gale.....			28.10	28.24	28.40	25B. 20B. 15B.		
Sunday, 10th.....	N W	Blowing a gale with clear weather. 2 A.M.—The gale moderated.....			29.20	29.24	29.44	9. B. 5. B. Zero		
Monday, 11th.....	N W	With a light breeze and clear weather.....			29.40	29.44	29.44	10	20	16
Tuesday, 12th.....	S W	With a light breeze and clear weather.....			29.44	29.39	29.28	11	24	23
Wednesday, 13th.....	S W	Blowing heavy with rain and fog. 3 P.M.—The wind veered to W, blowing a gale with rain.....			28.59	28.44	28.20	25	35	29
Thursday, 14th.....	W	Blowing a gale with clear weather. 9 P.M.—The wind veered to NW. The gale moderating.....			28.59	28.80	29.00	22	25	19
Friday, 15th.....	N N E	Blowing a fresh breeze with clear weather.....			29.30	29.34	29.34	9	14	11
Saturday, 16th.....	N E	With a light breeze and clear weather. Calm during the afternoon.....			29.29	29.20	29.20	Zero	10	5
Sunday, 17th.....	Calm.	With fine clear weather. 7 P.M.—A fresh breeze from E.....			29.30	29.30	29.20	2	11	7
Monday, 18th.....	S E	Blowing heavy with snow. 10 A.M.—A shift of wind to E, with clear weather.....			28.60	28.59	28.59	8	23	20
Tuesday, 19th.....	N E	Blowing a fresh breeze with clear weather. Calm during the afternoon.....			28.80	28.90	28.90	6	14	8
Wednesday, 20th.....	N	With a light breeze and clear weather. 1 P.M.—A shift of wind to W, with a fresh breeze.....			29.00	29.00	29.10	5	15	10

Thursday, 21st.	S W	Blowing heavy with clear weather.	11 A.M.—Snow.	10 P.M.—Clear weather.	29.00	28.84	28.59	11	23
Friday, 22nd.	W S W	With a fresh breeze and clear weather.			28.59	28.49	28.34	24	21
Saturday, 23rd.	W	Blowing heavy with clear weather.	10 A.M.—Sleet.		28.34	28.40	20.50	19	20
Sunday, 24th.	W	Blowing heavy with snow. 6 A.M.—Clear weather, with slight breeze. 10 P.M.—A shift of wind to NE, blowing a gale with snow.			28.60	28.70	28.49	7	16
Monday, 25th.	N E	Blowing a gale with snow. 11 A.M.—A sudden shift of wind to NW, blowing heavy, with clear weather.			28.29	28.40	28.54	10	12
Tuesday, 26th.	W N W	Blowing heavy with clear weather.			28.94	29.04	29.09	Zero	10
Wednesday, 27th.	W	With a strong breeze and clear weather.			29.20	29.20	29.20	7	15
Thursday, 28th.	W	With a light breeze and clear weather. Wind light and variable during the afternoon.			29.19	29.19	29.10	6	23

THE UNIVERSITY OF CHICAGO LIBRARY

METEOROLOGICAL REPORT, &c.—(Continued.)

MARCH, 1861.	Direction of Wind.	Remarks.	Guns fired in 24 hours, when Iceberg, when seen.	Rise and Fall of the Barometer.			Thermometer Outside.		
				Sunrise.	Noon.	Sunset.	Sunrise.	Noon.	Sunset.
Friday, 1st.	Calm.	With fine clear weather.		29.10	29.10	29.10	2	12	8
Saturday, 2nd.	W	With a light breeze and clear weather.		29.10	29.10	29.20	5	20	15
Sunday, 3rd.	W	With a light breeze and clear weather.		29.00	28.99	28.89	10	26	24
Monday, 4th.	S	With a light breeze and wet snow.		28.40	28.30	28.10	21	30	29
Tuesday, 5th.	E	Blowing a gale with wet snow. 7 A.M.—A strong breeze from E, with snow and clear weather. 3 P.M.—The wind veered to SW, with snow.		28.60	28.64	28.49	20	31	25
Wednesday, 6th.	W	Blowing strong with clear weather.		28.70	28.70	28.79	8	11	6
Thursday, 7th.	W N W	With a light air and clear weather. 10 P.M.—A shift of wind to NE, blowing strong with snow.		28.99	29.04	29.10	5 B	Zero	2 B
Friday, 8th.	N E	Blowing heavy with snow. 8 A.M.—Clear weather. 10 P.M.—A shift of wind to W.		29.00	29.10	29.20	7 B	4 B	6 B
Saturday, 9th.	W	Blowing heavy with hailstone. 2 P.M.—Clear weather.		29.00	28.94	29.29	7	22	25
Sunday, 10th.	S W	Blowing heavy with rain. 3 P.M.—The wind veered to W, with clear weather. Blowing a gale.		28.90	28.70	28.60	35	36	52
Monday, 11th.	W N W	Blowing a gale with clear weather. 2 P.M.—The gale moderated. 4 P.M.—A shift of wind to E, with a fresh breeze.		29.20	29.34	29.29	6	20	17
Tuesday, 12th.	E N E	Blowing strong with clear weather.		29.09	29.04	29.09	15	24	18
Wednesday, 13th.	N E	With a light breeze and hazy weather. 1 P.M.—A shift of wind to W, with clear weather.		29.14	29.20	29.29	16	25	16
Thursday, 14th.	N	With a light breeze and clear weather.		29.36	29.39	29.50	3	11	6
Friday, 15th.	Variable.	With light airs and clear weather. 10 A.M.—A fresh breeze from SW, with snow.		29.60	29.50	29.39	5	20	17
Saturday, 16th.	W	With a fresh breeze and clear weather. 3 P.M.—A shift of wind to SE, blowing a gale with wet snow.		29.30	29.24	29.00	6	28	14
Sunday, 17th.	S E	Blowing a gale with sleet. 8 A.M.—A shift of wind to N.E, blowing heavy with snow. 1 P.M.—Less wind with clear weather. 7 P.M.—A shift of wind to NW, with snow.		29.20	23.44	28.80	25	27	20
Monday, 18th.	E S E	Blowing heavy with snow. 5 P.M.—The wind veered to NE, with clear weather.		29.20	29.10	29.20	7	8	Zero
Tuesday, 19th.	N	With a light breeze and clear weather. 11 A.M.—A shift of wind to WNW, with a fresh breeze.		29.60	29.60	29.60	6 B	Zero	Zero
Wednesday, 20th.	Calm.	With clear weather. 9 A.M.—A strong breeze.		29.50	29.40	29.10	5 B	5	Zero

Thursday, 21st...	N E	Blowing strong with clear weather. Calm during the afternoon. A large iceberg at the East end of the island, the first that we have seen this winter. 8 P.M.—A fresh breeze from SW	1	29.19	29.30	29.40	4. B.	11	12
Friday, 22nd.....	W	Blowing strong with snow. 11 A.M.—A shift of wind to NE, blowing heavy with snow. 3 P.M.—Clear weather with less wind.		29.54	29.54	29.49	8	25	20
Saturday, 23rd....	S E	With clear weather. 7 P.M.—A light breeze from S.	2	29.10	28.90	29.04	16	22	15
Sunday, 24th.....	Calm.	With a light breeze and clear weather.	2	29.40	29.44	29.40	6	29	21
Monday, 25th.....	S W	With a fresh breeze and snow. 1 A.M.—A shift of wind to E, with hazy weather.	2	29.39	29.39	29.30	14	30	25
Tuesday, 26th....	S	Blowing heavy with hazy weather. 10 A.M.—The wind veered to NE, with clear weather.		29.40	29.39	29.40	35	30	29
Wednesday, 27th..	E	Blowing fresh with clear weather. 7 A.M.—A shift of wind to SW, with wet fog. 8 P.M.—Heavy rain.	27	29.50	29.59	29.60	25	22	15
Thursday, 28th...	N E	Blowing strong with clear weather. A Schooner among the ice, seal fishing, the first vessel that we have seen this spring. 3 P.M.—Snow.		29.30	29.29	28.99	20	36	32
Friday, 29th.....	W	With a light breeze and clear weather. 1 Schooner in sight. 6 P.M.—A shift of wind to SW, with a strong breeze.		28.90	28.90	28.99	30	33	26
Saturday, 30th....	N W	Blowing a strong breeze with wet fog. 11 A.M.—A sudden shift of wind to NE, with clear weather and a strong breeze.	30	29.30	29.39	29.30	17	30	25
Sunday, 31st.....	N S W		18	29.00	29.14	29.30	24	30	25

METEOROLOGICAL REPORT, &c.—Continued.

APRIL, 1861.	Direction of Wind.	REMARKS.	Guns fired in 24 hours.	Icebergs when seen.	Rise and Fall of the Barometer.			Thermometer Outside.		
					Sunrise.	Noon.	Sunset.	Sunrise.	Noon.	Sunset.
Monday, 1st.....	N E	Blowing heavy with clear weather. Commenced to exhibit the light.....	30	29.60	29.74	29.80	Zero	8	16
Tuesday, 2d.....	N E	Blowing heavy with clear weather. 10 A.M.—The wind increased to a severe gale with showers of snow. William Crow, one of my men died at 7 P.M.; he has been sick all the winter.....	35	29.80	29.80	29.80	7.B.	5	Zero
Wednesday, 3rd..	N E	Blowing a gale with showers of snow occasionally. 6 A.M.—The wind veered to E, blowing heavy with rain.....	38	29.60	29.30	28.80	2.B.	7	23
Thursday, 4th....	N E	Blowing heavy with clear weather. 10 A.M.—A shift of wind to W.....
Friday, 5th.....	E	Blowing heavy with snow.....	2	29.10	29.20	29.34	18	30	34
Saturday, 6th....	N E	Blowing heavy with clear weather.....	29.39	29.40	29.50	28	25	22
Sunday, 7th.....	N E	Blowing strong with clear weather.....	29.40	29.40	29.39	14	21	11
Monday, 8th.....	N E	Blowing heavy with cloudy weather.....	58	29.29	29.20	29.20	5	18	14
Tuesday, 9th....	E	Blowing a strong breeze with cloudy weather. 3 P.M.—A shift of wind to W.....	80	29.14	29.10	29.14	16	29	25
Wednesday, 10th..	W	With a light breeze and clear weather. 9 A.M.—A shift of wind to NE, blowing strong.....	94	29.29	29.30	29.29	24	33	27
Thursday, 11th..	N	With a strong breeze and clear weather.....	104	29.10	29.00	29.09	19	32	23
Friday, 12th....	N N W	With a light breeze and clear weather. 6 P.M.—A fresh breeze from W.....	133	29.09	29.19	29.20	5.B.	Zero	-5
Saturday, 13th..	W	With a strong breeze and clear weather.....	140	29.30	29.44	29.50	7.B.	10	14
Sunday, 14th....	S W	With a fresh breeze and cloudy weather. 6 P.M.—Rain.....	115	29.50	29.50	29.40	13	33	27
Monday, 15th....	S W	Blowing heavy with rain. 3 A.M.—Wet fog. 7 A.M.—Clear weather. 5 P.M.—A strong breeze from W.....	70	29.29	29.29	29.10	28	42	35
Tuesday, 16th....	W	With a fresh breeze and clear weather. 8 A.M.—A shift of wind to NE, with a strong breeze and light snow.....	4	60	28.80	28.89	28.80	33	40	34
Wednesday, 17th..	N E	Blowing strong with clear weather. 4 P.M.—The wind veered to E, blowing a gale.....	43	28.90	29.09	29.30	29	32	25
Thursday, 18th....	S E	Blowing a gale with showers of hailstone. 10 A.M.—The gale abated with a shift of wind to S, with rain and fog. 8 P.M.—A shift of wind to W, with clear weather.....	50	29.50	29.60	29.20	5.B.	Zero	10
Friday, 19th....	W	Blowing heavy with showers of hailstone occasionally.....	10	28.80	28.65	28.60	23	38	35
Saturday, 20th....	Calm.	With clear weather. 9 P.M.—A strong breeze from E.....	37	28.59	28.80	28.90	25	37	27
Sunday, 21st....	E	Blowing a heavy gale with rain. 1 A.M.—A shift of wind to SW, with showers of snow occasionally.....	41	29.00	29.20	29.29	25	40	30
			9	28.60	28.44	28.50	28	38	25

Monday, 22nd....	W	Blowing a gale with showers of snow occasionally. 10 A.M.—Less wind. One crystal chimney broken.....	30	28.60	29.10	29.20	15	27	25
Tuesday, 23rd....	Calm.	With clear weather.....	43	29.39	29.54	29.59	24	29	23
Wednesday, 24th....	S W	With a light breeze and clear weather. 4 P.M.—The wind veered to S, blowing strong.....	47	29.50	29.50	29.50	22	40	27
Thursday, 25th....	S S W	Blowing a strong breeze with clear weather. 9 A.M.—Wet snow and thick weather.....	42	29.50	29.40	29.30	23	32	28
Friday, 26th....	S S E	Blowing a strong breeze with snow and thick weather. 1 P.M.—The wind veered to E, blowing a gale with rain and fog. One crystal chimney broken.....	16	29.14	29.20	29.14	35	35	29
Saturday, 27th....	E	Blowing a gale with rain and fog. One crystal chimney broken.....	21	29.09	29.09	29.00	30	42	37
Sunday, 28th....	E N E	Blowing a gale with rain and fog. 7 A.M.—Less wind with fog.....	23	29.04	29.19	29.20	36	38	32
Monday, 29th....	E	Blowing strong with fog and rain. 2 A.M.—Fog occasionally.....	6	29.20	29.24	29.24	29	37	29
Tuesday, 30th....	E	With a light breeze and clear weather. 4 A.M.—Fog occasionally. Calm during the afternoon.....	9	29.24	29.20	29.19	27	45	36

METEOROLOGICAL REPORT, &c.—(Continued.)

MAY, 1861.	Direction of Wind.	Remarks.	Guns fired in 24 hours.	Iceberg, when seen.	Rise and Fall of the Barometer.			Thermometer Outside.		
					Sunrise.	Noon.	Sunset.	Sunrise.	Noon.	Sunset.
Wednesday, 1st.	W N W	Blowing a fresh breeze with fog. 10 A.M.—Clear weather.	10	56	29.10	29.10	29.10	46	37	
Thursday, 2nd.	S W	With a light breeze and clear weather. One brig in the ice seal fishing. 10 A.M.—Blowing heavy from SE, with sleet.	14	59	29.04	29.19	29.10	47	34	
Friday, 3rd.	S E	Blowing heavy with sleet and tick weather. 5 P.M.—A shift of wind to W, with clear weather. 1 Brig in sight.	16	55	29.00	28.80	28.90	35	29	
Saturday, 4th.	W	Blowing strong with showers of snow occasionally. 5 Brigs in sight.	7	7	29.00	29.10	29.10	32	25	
Sunday, 5th.	W N W	With a strong breeze and showers of snow occasionally. 1 P.M.—Calm with clear weather. 5 P.M.—Blowing heavy from E, with snow.	8	61	29.20	29.30	29.10	40	27	
Monday, 6th.	N E	Blowing a heavy gale with snow. 6 A.M.—Less wind from N, with clear weather.	6	59	28.49	28.60	28.80	32	27	
Tuesday, 7th.	W N W	Blowing a strong breeze with clear weather. The ice is drifting fast out of the Strait.	...	53	29.10	29.19	29.24	32	30	
Wednesday, 8th.	S W	Blowing a gale with sleet and thick weather. 10 A.M.—Less wind with fog. 4 P.M.—Calm with clear weather. The Strait sufficiently clear of ice for vessels to pass through.	...	14	28.90	29.09	29.10	30	37	
Thursday, 9th.	Variable.	With light airs and fog occasionally. Calm during the afternoon.	6	6	29.10	29.09	29.00	32	36	
Friday, 10th.	E	With a fresh breeze and clear weather. 1 Brig and 1 Schooner in sight. 4 P.M.—Sleet and fog.	9	9	29.09	29.09	29.00	34	32	
Saturday, 11th.	E	Blowing heavy with sleet and fog. 9 A.M.—Cloudy weather. 9 P.M.—Fog.	12	12	29.10	29.29	29.30	31	34	
Sunday, 12th.	E	With a fresh breeze and wet fog. 6 A.M.—Cloudy weather.	...	50	29.30	29.39	29.39	26	36	
Monday, 13th.	Variable.	With light airs and clear weather.	...	53	29.39	29.40	29.44	27	47	
Tuesday, 14th.	W	With a fresh breeze and clear weather.	...	56	29.44	29.49	29.49	29	39	
Wednesday, 15th.	Variable.	With light airs and clear weather. A quantity of packed ice, outside the island and in the Strait. 3 P.M.—A light breeze from SE.	...	56	29.49	29.49	29.39	30	35	
Thursday, 16th.	E	With a fresh breeze and hazy weather. 4 A.M.—Fog. 5 P.M.—Strong wind from NE, with cloudy weather.	...	14	29.30	29.24	29.20	32	30	
Friday, 17th.	N E	Blowing heavy with a severe snow storm. 10 P.M.—The wind increased to a gale.	14	14	29.10	29.04	29.00	26	30	
Saturday 18th.	N E	Blowing a gale with snow. This has been as heavy a snow storm, as has been this winter.	...	18	28.80	28.80	28.80	27	32	
Sunday, 19th.	N	Blowing strong with showers of snow occasionally. A great quantity of heavy packed ice has been driven into the Strait by the late NE gales.	12	12	28.90	28.99	29.10	27	30	
Monday, 20th.	Variable.	With a light breeze and clear weather. The Strait completely blocked up with heavy packed ice, driven in from Davis' Strait from the late NE gales.	...	95	29.20	29.39	29.40	27	43	
Tuesday, 21st.	Calm.	With clear weather. 2 P.M. a light breeze from S.	102	102	29.50	29.60	29.59	26	38	

Wednesday, 22nd.	S S E	Blowing strong with hazy weather. 4 A.M.—A heavy snow storm. 1 P.M.—The wind veered to E, blowing a severe gale with sleet. 11 P.M.—Wind veered to NE, with heavy snow.	21	29.40	28.80	28.50	26	28	25
Thursday, 23rd.	N E	Blowing a severe gale with snow. 2 P.M.—Less wind with clear weather. Wind light and variable during the afternoon.	14	28.60	29.40	29.50	24	39	36
Friday, 24th.	W	With a fresh breeze and clear weather.	135	29.59	29.50	29.40	29	40	39
Saturday, 25th.	W	With a fresh breeze and clear weather. There has as much snow fallen this month as any one month during the winter.	134	29.39	29.30	29.20	33	55	44
Sunday, 26th.	Variable.	With light airs and clear weather. 3 P.M.—A fresh breeze from S, with fog occasionally.	6	29.00	28.99	28.84	38	43	33
Monday, 27th.	Variable.	With light airs and fog occasionally. 5 P.M.—A fresh breeze from W.	16	28.80	28.80	28.80	32	34	32
Tuesday 28th.	W	With a fresh breeze and fog. 7 A.M.—Clear weather. 9 A.M.—A shift of wind to ENE. A deal of drifting ice in the Strait and outside the island. 4 P.M.—Blowing a gale with sleet.	11	28.89	28.80	28.70	30	41	29
Wednesday, 29th.	N E	Blowing a gale with hailstone and thick weather. 6 A.M.—Less wind with clear weather. One crystal chimney broken.	6	28.69	28.90	29.10	26	42	32
Thursday, 30th.	W	With a light breeze and clear weather. The ice sufficiently clear for vessels to pass through the Strait. 7 P.M.—Fog.	6	29.14	29.14	29.10	30	48	35
Friday, 31st.	W	Blowing strong with wet fog. 7 A.M.—Clear weather.	7	29.14	29.09	29.09	29	42	39

METEOROLOGICAL REPORT, &c.—(Continued.)

JUNE, 1861.	Direction of Wind.	Description.	Guns fired in 24 hours.	Icebergs, when seen.	Rise and Fall of the Barometer.			Thermometer Outside.		
					Sunrise.	Noon.	Sunset.	Sunrise.	Noon.	Sunset.
Saturday, 1st.....	W	Blowing strong with clear weather. 3 A.M.—A sudden shift of wind to ENE, with heavy snow. Wind light and variable during the afternoon. 16 Brigs and 2 Barks outside the island inward bound.	10	220	29.19	29.30	29.30	29	34	29
Sunday, 2nd.....	N N E	With a fresh breeze and heavy snow. 3 A.M.—Clear weather. A quantity of heavy packed ice outside the island. 16 Brigs, 3 Schooners and 3 Barks in sight inward bound. One of the Montreal Ocean Steamships passed inward bound at 10 A.M. The first vessel that passed through the Strait this spring. 11 A.M.—Strong wind from W.	6	229	29.34	29.59	29.50	25	42	30
Monday, 3rd.....	W	Blowing heavy with clear weather. 3 Barks and 7 Brigs in sight inward bound.	..	296	29.49	29.40	29.19	29	40	34
Tuesday, 4th.....	S W	Blowing a gale with rain and fog. 1 P.M.—Less wind from W, with clear weather.	14	189	28.89	28.60	28.89	30	41	39
Wednesday, 5th.....	W	With a fresh breeze and clear weather. 3 A.M.—Fog and snow. 8 A.M.—Clear weather.	7	191	28.90	29.09	29.19	33	43	40
Thursday, 6th.....	W	Blowing heavy with hazy weather.	29.20	29.29	29.29	34	42	44
Friday, 7th.....	W N W	Blowing heavy with hazy weather. 6 A.M.—A shift of wind to E, with a fresh breeze and cloudy weather. 3 P.M.—Heavy snow. 8 P.M.—Clear weather.	6	..	29.29	29.39	29.39	37	34	30
Saturday, 8th.....	N N E	With a light breeze and clear weather. 2 P.M.—A fresh breeze from SW. 4 Brigs, 5 Schooners and 5 Brigantines passed during the day going N. A Steamship passed inward bound at 5 P.M.	..	195	29.49	29.49	29.40	39	37	31
Sunday, 9th.....	W S W	With a fresh breeze and hazy weather. 2 P.M.—Fog and rain. 11 P.M.—A steamship passed inward bound. 5 Brigs, 8 Brigantines and 3 Schooners passed going N. 4 Brigs passed inward bound. 6 P.M.—A shift of wind to N, with clear weather.	15	..	29.20	29.10	29.10	28	39	32
Monday, 10th.....	E	With a strong breeze with fog and sleet.	24	..	29.00	28.95	29.09	29	32	30
Tuesday, 11th.....	E S E	With a fresh breeze and fog. 6 A.M.—Clear weather. 9 A.M.—Fog and rain occasionally. 11 A.M.—A Steamship passed outward bound and 4 Brigs and 7 Brigantines going N.	29.10	29.20	29.20	28	40	33
Wednesday, 12th.	S	Blowing heavy with wet fog. 8 P.M.—Clear weather.	14	..	29.00	28.99	28.90	32	46	36
Thursday, 13th.....	S W	With a light breeze with fog and rain. 10 A.M.—A shift of wind to NE, blowing heavy with clear weather. 7 Brigs, 9 Brigantines passed during day going N.	11	80	28.70	28.70	28.99	39	46	39
Friday, 14th.....	S W	With a light breeze and wet hazy weather. 5 A.M.—Fog. 10 A.M.—Clear weather. 10 Brigs, 8 Schooners and 26 Brigantines passed during the day going N.	11	92	29.10	29.20	29.29	33	42	40

Saturday, 15th...	W S W	With a light breeze and clear weather. 8 Brigs, 11 Schooners and 14 Brigantines passed during the day going N. 1 Bark passed outward bound at 11 A.M.	1	125	29.29	29.29	29.29	29.29	35	40	42
Sunday, 16th.....	Variable.	With light airs and hazy weather. 11 A.M.—Blowing heavy from S, with rain. 3 Brigs, 2 Brigantines and 4 Schooners passed going N. 7 P.M.—The wind increased to a gale with fog and rain.....	6	124	29.29	29.10	28.45	38	39	36	36
Monday, 17th.....	S S W	Blowing a gale with heavy rain and fog. 9 A.M.—A shift of wind to W, blowing strong with clear weather. 2 Brigs and 2 Schooners passed going N.....	10	125	28.70	29.00	29.10	37	43	40	40
Tuesday, 18th.....	W	Blowing a strong breeze with clear weather. 2 Brigs and 5 Schooners passed going N.....	112	112	29.19	29.29	29.39	36	46	48	48
Wednesday, 19th..	W N W	With a light breeze and clear weather. 1 P.M.—Wind SSE. 8 P.M.—Wet fog. 4 Schooners passed going N.....	5	108	29.40	29.40	29.39	46	48	39	39
Thursday, 20th..	S	With a light breeze and wet fog. 10 A.M.—Blowing strong.....	24	24	29.29	29.19	29.10	37	45	34	34
Friday, 21st.....	S S E	Blowing heavy with wet fog. 3 P.M.—A shift of wind to W, with fog occasionally.	20	20	29.90	28.80	28.89	34	44	42	42
Saturday, 22nd..	Variable.	With light airs and fog occasionally. 2 Ships, 1 Brig passed outward bound.....	12	12	29.00	29.10	29.14	38	52	45	45
Sunday, 23rd.....	S S E	With a light breeze and hazy weather. 3 Brigs passed going N, and 1 Ship and 1 Brig outward bound.....	24	24	29.14	29.10	29.10	39	43	38	38
Monday, 24th.....	S S E	Blowing strong with rain and fog.....	24	24	29.10	29.20	29.20	39	44	40	40
Tuesday, 25th.....	S S E	Blowing heavy with fog and rain. 2 A.M.—The wind veered to E, blowing heavy with fog and rain.....	19	19	29.19	29.19	29.20	38	40	38	38
Wednesday, 26th..	Variable.	With light airs and fog occasionally. 6 P.M.—A fresh breeze from SW, with fog.....	14	80	29.29	29.40	29.39	37	53	40	40
Thursday, 27th..	W S W	Blowing heavy with cloudy weather. 8 A.M.—The wind veered to W, with wet fog.....	17	17	29.00	28.99	28.90	29	43	42	42
Friday, 28th.....	W	Blowing heavy with wet fog. 10 A.M.—Clear weather. 1 Schooner passed going to the N.....	10	68	28.80	28.90	28.99	41	47	43	43
Saturday, 29th..	W	Blowing strong with hazy weather. 3 A.M.—A Steamship passed outward bound, 1 Brig and 1 Schooner passed going N.....	59	59	28.96	29.00	29.10	42	48	43	43
Sunday, 30th.....	W	With a fresh breeze and clear weather. 4 P.M.—Blowing heavy with hazy weather.....	59	59	29.20	29.24	29.20	41	61	44	44

METEOROLOGICAL REPORT, &c.—(Continued).

JULY, 1861.

R E M A R K S .

	Direction of Wind.	Guns fired in 24 hours.	Icebergs, when seen.	Rise and Fall of the Barometer.			Thermometer Outside.		
				Sunrise.	Noon.	Sunset.	Sunrise.	Noon.	Sunset.
Monday, 1st.....	W	50	29.24	29.30	29.30	46	56	49
Tuesday, 2nd....	Variable.	9	29.30	29.39	29.44	45	50	47
Wednesday, 3rd..	W S W	39	29.49	29.50	29.49	46	68	45
Thursday, 4th....	S	9	29.40	29.30	29.10	39	47	44
Friday, 5th.....	W	6	29.19	29.19	29.10	39	47	62
Saturday, 6th....	W	7	29.20	29.10	29.20	47	53	65
Sunday, 7th.....	E	9	29.30	29.50	29.49	39	44	39
Monday, 8th.....	S	14	29.30	29.30	29.24	38	45	45
Tuesday, 9th....	W	12	29.10	29.24	28.99	47	57	54
Wednesday, 10th..	W	11	29.04	29.09	29.19	48	49	47
Thursday, 11th...	E	41	29.30	29.40	29.54	43	54	46
Friday, 12th.....	E S E	13	29.50	29.40	23.39	43	46	45
Saturday, 13th...	W	15	29.19	29.30	29.50	47	52	45
Monday, 14th....	E	44	29.64	29.74	29.70	41	47	42
Tuesday, 15th...	S	16	29.74	29.80	29.70	39	48	41
Wednesday, 16th..	S	24	29.59	29.40	29.30	43	54	56
Thursday, 17th...	W	24	29.30	29.30	29.30	49	55	48

Thursday, 18th.	W	Blowing strong with wet fog.	24	29.24	29.20	29.10	47	56	47
Friday, 19th.	W	Blowing strong with fog. 2 A.M.—Clear weather. 1 P.M.—Rain with thunder— Clear weather during the afternoon. 2 Barks passed outward bound and 4 Schooners going N during the day.	6	36	29.00	29.10	45	55	52
Saturday, 20th.	W	With a fresh breeze and clear weather. 2 A.M.—A shift of wind to E, blowing fresh with thick weather. 6 A.M.—The Steamer Napoleon arrived from Chateau bay to take the workmen from here, that had been clapping the tower. 12 P.M.—The Steamer Napoleon left here for Quebec. 11 A.M.—A Steamship passed inward bound and 1 Schooner going S. Clear weather during the af- ternoon.	3	32	29.10	29.20	42	46	49
Sunday, 21st.	Variable.	With light airs and clear weather. 12 P.M.—A fresh breeze from ESE. 1 Schooner passed going N. 10 P.M.—Rain and thick weather.	3	35	29.29	29.20	37	43	39
Monday, 22nd.	E	Blowing strong with wet hazy weather. 11 A.M.—The wind veered to NE, with clear weather.	4	42	29.10	29.19	37	46	42
Tuesday, 23rd.	Variable.	With light air and clear weather. 6 Schooners passed going N, during the day.	4	45	29.30	29.34	39	52	49
Wednesday, 24th.	W	With a light breeze and clear weather. 5 A.M.—A Steamship passed outward bound. 10 Schooners going N. 7 P.M.—A shift of wind to E, with rain.	2	43	29.39	29.39	42	56	47
Thursday, 25th.	Variable.	With light airs and clear weather. 6 P.M.—Fog. 11 P.M.—A fresh breeze from W, with clear weather.	5	39	29.50	29.60	46	53	41
Friday, 26th.	W	Blowing strong with clear weather. 8 A.M.—Fog. 11 A.M.—Blowing heavy with clear weather. 3 Schooners passed going to the N, and 1 Brig going S during the day.	4	37	29.50	29.50	40	54	51
Saturday, 27th.	W	Blowing heavy with clear weather. 4 A.M.—Fog. 11 A.M.—Clear weather. 10 P.M.—Fog.	12	31	29.59	29.60	49	56	53
Sunday, 28th.	W	Blowing fresh with fog. 7 A.M.—A shift of wind to NE, with a fresh breeze and clear weather. 12 Schooners passed during the day going N. Wind light and variable during the afternoon.	6	44	29.60	29.64	49	60	49
Monday, 29th.	Calm.	With clear weather. Slight breeze from SW, during the afternoon.	11	44	29.69	29.69	47	56	48
Tuesday, 30th.	Variable.	With light air and clear weather. 1 A.M.—Fog occasionally during the day. 11 A.M.—A Steamship passed outward bound, and 1 Ship inward bound. 14 Schooners going N.	16	29.69	29.50	29.50	47	59	53
Wednesday, 31st.	S W	Blowing strong with fog and rain.	24	29.49	29.20	29.10	51	63	55

METEOROLOGICAL REPORT, &c.—(Continued.)

R E M A R K S .

AUGT., 1861.	Direction of Wind.	Guns fired in 24 hours.	Icebergs, when seen.	Rise and Fall of the Barometer.			Thermometer Outside.		
				Sunrise.	Noon.	Sunset.	Sunrise.	Noon.	Sunset.
Thursday, 1st...	W	15	43	28.90	28.89	29.00	52	56	51
Friday, 2nd.....	N N W	2	51	29.10	29.10	29.10	52	64	53
Saturday, 3rd....	W	4	46	29.09	29.09	28.89	49	72	58
Sunday, 4th.....	E S E	6	44	28.60	28.89	28.90	46	51	54
Monday, 5th.....	W	19	41	28.80	28.70	28.70	51	53	52
Tuesday, 6th.....	W	14	41	28.90	28.84	29.00	46	56	49
Wednesday, 7th..	E	14	41	29.04	29.10	29.19	45	46	43
Thursday, 8th...	N E	37	37	29.30	29.34	29.34	42	52	45
Friday, 9th.....	W S W	36	36	29.34	29.29	29.29	42	55	43
Saturday, 10th...	S W	6	6	29.24	29.30	29.30	47	59	58
Sunday, 11th.....	S S E	6	6	29.19	29.10	29.10	47	48	46
Monday, 12th....	S S E	4	33	29.00	29.19	29.29	45	51	44
Tuesday, 13th...	E	2	43	29.40	29.44	29.44	43	53	47
Wednesday, 14th.	W	38	38	29.49	29.49	29.44	45	54	49
Thursday, 15th...	W	34	34	29.40	29.44	29.39	46	61	56

Friday, 16th.....	W	With a fresh breeze and clear weather. 10 A.M.—The Steamship Bohemian, Capt. Ballantine, passed inward bound. Very kindly have to for me to get advice from his Doctor for one of my men who had been sick for some time, as also he supplied me with some fresh provisions.....	3	31	29.30 29.40	29.34 29.30	29.40 29.30	50 52	56 57
Saturday 17th.....	W	Blowing heavy with hazy weather.....	6	24	29.30 29.14	29.20 29.20	29.20 29.21	47 45	54 48
Sunday, 18th.....	W	Blowing strong with hazy weather. 3 P.M.—Fog. 7 P.M.—Clear weather with less wind. 9 P.M.—Fog. 12 A.M.—A shift of wind to NE, blowing strong with hazy weather.....	3	18	29.30	29.30	29.40	38	53
Monday, 19th.....	N E	Blowing heavy with clear weather. 7 Schooners passed going S during the day.....	4	20	29.40	29.40	29.34	46	62
Tuesday, 20th.....	N E	Blowing strong with clear weather. 4 A.M.—A Steamship passed outward bound and at 4 P.M. a Ship and 3 Schooners passed going S.....	4	19	29.29	29.20	29.04	47	52
Wednesday, 21st.....	N W	With a light breeze and clear weather. 6 A.M.—A Ship and 2 Brigs passed outward bound, and 1 Brig inward. 6 P.M.—The wind veered to W, blowing heavy.....	11	19	28.80	28.90	29.09	46	50
Thursday, 22nd.....	W S W	Blowing heavy with cloudy weather. 11 A.M.—Rain and thick weather occasionally. Blowing a gale with rain and fog. 6 A.M.—The wind veered to W, with less wind. 10 A.M.—A sudden shift of wind to NE, blowing heavy with clear weather. One of the sunken icebergs was driven in to the bay near the landing. A ground in 31 fathoms.....	14	14	29.30	29.40	29.49	42	48
Friday, 23rd.....	S W	Blowing strong with cloudy weather. 1 P.M.—A Steamship passed inward bound and 2 Brigs outward and 3 Schooners going S. 9 A.M.—Fog. 12 P.M.—Clear weather.....	14	14	29.64 29.59	29.60 28.54	29.60 29.40	42 43	50 54
Saturday, 24th.....	N E	Clear weather.....	8	8	29.39	29.30	29.34	47	55
Sunday, 25th.....	Calm.	With clear weather. 2 Brigs and 1 Ship in sight outward bound.....	3	8	29.30	29.40	29.49	40	45
Monday, 26th.....	W	Blowing heavy with clear weather.....	8	8	29.50	29.50	29.49	39	48
Tuesday, 27th.....	W	Blowing heavy with hazy weather. 10 A.M.—A steamship passed outward bound. 1 P.M.—Fog occasionally. One crystal chimney broken.....	7	10	29.30	29.30	29.30	41	48
Wednesday, 28th.....	W	Blowing heavy with fog. 1 A.M.—Clear weather. 2 A.M.—A sudden shift of wind to E, with clear weather.....	11	11	29.20	29.30	29.39	44	47
Thursday, 29th.....	N E	With a light breeze and clear weather. 6 Schooners passed going S, and Brigs going N during the day.....	7	10	29.30	29.30	29.30	41	48
Friday, 30th.....	S	Blowing fresh with fog occasionally. 1 P.M.—Clear weather. One crystal chimney broken. The sunken iceberg near the landing broke in two and turned over this afternoon.....	7	10	29.30	29.30	29.30	41	48
Saturday, 31st.....	S	Blowing a strong breeze with clear weather. One crystal chimney broken.....	7	11	29.20	29.30	29.39	44	47

METEOROLOGICAL REPORT, &c.—Continued.

SEPT. 1861.	Direction of Wind.	REMARKS.	Guns fired in 24 hours.	Icebergs when seen.	Rise and Fall of the Barometer.			Thermometer Outside.		
					Sunrise.	Noon.	Sunset.	Sunrise.	Noon.	Sunset.
Sunday, 1st.....	S E	Blowing strong with clear weather. 2 Schooners passed going S. and 1 Brig going N. during the afternoon.	11	29.40	29.49	29.49	42	46	44
Monday, 2nd.....	E S E	Blowing strong with clear weather. 1 Bark and 1 Brig passed inward bound at 9 A.M. and 29 Schooners going S. A Brigantine going N.	10	29.50	29.60	29.60	43	50	44
Tuesday, 3rd.....	W S W	With a light breeze and clear weather. 8 A.M.—A Steamship passed outward bound.	8	29.50	29.49	29.39	39	50	42
Wednesday, 4th.....	S W	With a fresh breeze and hazy weather. 5 P.M.—Rain and fog.	8	29.30	29.20	29.10	40	46	45
Thursday, 5th.....	S W	Blowing strong with fog. 12 P.M.—The wind veered to W, blowing heavy with clear weather. 6 P.M.—Fog and rain. 10 P.M.—Clear weather.	13	28.99	28.99	29.00	46	51	47
Friday, 6th.....	N W	Blowing heavy with clear weather. 1 P.M.—Less wind. 7 A.M.—A Bark passed outward bound, and 33 Schooners going S during the day. 9 P.M.—A Steamship passed inward bound.	3	29.10	29.30	29.39	43	54	49
Saturday, 7th.....	S W	Blowing strong with clear weather. One crystal chimney broken.	7	29.30	29.24	29.24	45	54	52
Sunday, 8th.....	S W	Blowing heavy with rain and fog. 4 A.M.—The wind veered to NW, with clear weather and less wind. 27 Schooners, 2 Brigantines passed going S during the afternoon. 7 P.M.—A Ship passed outward bound.	10	28.99	29.10	29.20	44	52	47
Monday, 9th.....	W	Blowing strong with clear weather. 12 Schooners and 3 Brigantines passed going S. and 1 Brigantine going N. during the day.	10	29.30	29.39	29.40	42	51	44
Tuesday, 10th.....	W	Blowing strong with clear weather. 0 P.M.—Fog. 10 A.M.—Clear weather. 6 P.M.—A sudden shift of wind to E.	9	29.39	29.30	29.40	44	57	43
Wednesday, 11th.....	E	With a fresh breeze and clear weather. 10 A.M.—A shift of wind to W, blowing strong. 15 Schooners passed during the day going S, and one Brigantine outward bound.	8	29.49	29.49	29.49	38	52	48
Thursday, 12th.....	W	Blowing fresh with clear weather. 10 P.M.—A shift of wind to SSE, blowing heavy with rain.	8	29.40	29.40	29.30	46	54	48
Friday, 13th.....	S S E	Blowing a gale with rain. 9 A.M.—Fog and rain. 5 P.M.—Less wind. 9 P.M.—A shift of wind to NW, with clear weather.	12	29.10	28.90	28.90	45	47	49
Saturday, 14th.....	N N W	Blowing strong with clear weather. 34 Schooners and 3 Brigantines passed going S, during the day.	5	29.19	29.30	29.39	41	48	46
Sunday, 15th.....	S W	Blowing fresh with clear weather. 1 Schooner passed going S. 10 A.M.—Wind veered to W, blowing heavy with fog occasionally and showers of rain. 1 P.M.—Wind increased to a gale. 6 P.M.—A sudden shift of wind to NE, with less wind.	2	29.10	29.00	29.00	47	52	57

Monday, 16th....	E N E	Blowing strong with hazy weather. 11 Schooners and 4 Brigs passed during the day going S.	5	29.20	29.24	29.29	37	40	35
Tuesday, 17th....	W S W	With a light breeze and clear weather. 6 A.M.—A Steamship passed outward bound and one Ship at 11 A.M. the wind increased to a gale. 10 P.M.—Less wind.	3	29.24	29.09	29.00	30	46	42
Wednesday, 18th.	W N W	Blowing strong with clear weather. One Brigantine passed going S. 6 A.M.—Wind blowing heavy.	6	29.10	29.19	29.20	36	44	43
Thursday, 19th....	W	Blowing a gale with hazy weather. 6 A.M.—A Ship passed outward bound. 10 A.M.—Fog with less wind.	15	28.00	29.40	29.00	42	49	48
Friday, 20th....	W	Blowing heavy with fog and rain occasionally. 10 A.M.—The wind increased to a gale with clear weather. 3 P.M.—The wind veered to NNW, blowing heavy.	8	28.60	28.60	28.80	47	51	44
Saturday, 21st....	W N W	Blowing heavy with clear weather. 2 P.M.—A Bark passed inward bound and 4 Brigantines and 7 Schooners going S, during the day.	6	29.14	29.30	29.40	30	32	38
Sunday, 22nd....	N N E	With a light breeze and clear weather. A Steamship passed inward bound. 5 A.M.—The Steamer Napoleon arrived at 7 A.M. with supplies for the Lighthouse, and McCottin to take charge of Belle-Isle Lighthouse. I leave at 7 P.M. to take charge of the South Pillar Lighthouse after being five years and 35 day at Belle-Isle.							

APPENDIX

Shewing the Lat., Long. and distances from one headland to the other ; from St. Pauls to Quebec ; as also from the East entrance Strait of Belle Isle, along the Labrador coast, to Quebec.

The western entrance of the Strait between Greenly Island and point Zerolle, is nearly 21 miles wide, the point bearing from the island S.S.W. the course and distance through the strait is S. 54 W. true or according to the mean variation W. $\frac{1}{4}$ S. 65 miles.

Greenly island lies $1\frac{1}{2}$ miles S.S.W. from Grand point which is on the northern or Labrador side of the entrance of the gulf of St. Lawrence through the strait of Belle Isle, the coast which will form the subject of this chapter lies between that island and the Southmakers' lodge, near Cape Whittle from the south point of Greenly island to the Southmakers' ledge, the course is S. 56 W. true or nearly W. $\frac{1}{3}$ S. by compass and the distance is 128 miles, this line, however, could not be safely run upon at night, or in foggy weather because it would take a vessel too near the Murr rocks, and the black reef and would pass just within the St. Mary rocks. The safe course to be steered from Greenly island, by a vessel bound up the St. Lawrence, would be, W. by S. which would clear all danger up to the east end of Anticosti, bearing from the south point of Greenly island S. 52 30 W. true 218 miles.

ANTICOSTI ISLAND.

This island situate in the entrance of the N.W. or in the gulf of St. Lawrence is 122 miles long, 30 miles in extreme breadth, and about 270 miles in circumference, following the coast from point to point across the bays.

Course from St. Paul to east point of Magdelene is N.W. $\frac{1}{4}$ W., distance 56 miles and to Entry island N.W. by $\frac{3}{4}$ W., distance 33 miles, and from the north Bird Rock to the lighthouse on the E. W. by compass 134 miles, the east point of Anticosti or N. $\frac{3}{4}$ E. by compass 80 miles.

Course should be steered along course from S.W. point to W. end, the coast, so as to pass 8 or 10 miles to the southward and westward of Cape Henry and west point N.W. $\frac{1}{2}$ N., will be a safe course at night, or in thick weather.

From the west point of Anticosti to the south extremity of point De Monts, bears W. $\frac{1}{2}$ N. by compass, distance 116 miles. From the south extremity of point De Monts to north side of Bicquette island, bears S. 48 W. true, or W.S.W. by compass 79 miles, and the south point of the Manicoungon shoals S. 84 W., by compass 33 miles.

Having made the light on point De Monts, and being 3 or 4 miles off it to southward with usual easterly winds, nearly, or right up the Estuary, steer W by S. by compass, until up nearly as high as the Manicoungon shoals, then keep half a point more to the southward, W.S.W. $\frac{1}{2}$ W.. These are safe courses with either ebb or flood, and if the vessel has left point De Monts at, or near, the commencement of ebb tide, will usually bring her into soundings off Metis, where 30 fathoms, over sandy bottom, will be found 3 miles off shore, and 50 fathoms 5 miles off shore, and on the edge of the bank from the north side of Bicquette island to the lighthouse on Green island, which shows a fixed light, bears S. 44 W. true, or S.W. by W. $\frac{1}{2}$ by compass, distance 30 $\frac{1}{2}$ miles, and the light can be seen in clear weather from distance of 17 or 18 miles, course from Green island to Brandy pots, bears S.W. $\frac{3}{4}$ W., the whole distance from Green island lighthouse to the light vessel at the Traverse is 54 miles ; from Traverse to Quebec 56 miles.

VIRGIN ROCKS IN APPROACHING CAPE RACE 29 LEAGUES S.E. $\frac{3}{4}$ E.

	Latitude N.			Longitude W.		
	46	26	30	50	51	30W
NOVA SCOTIA AND SOUTHERN COAST.						
Sable island N.E. end.....	43	59	0	59	47	0
The southernmost point.....	43	56	0	60	0	0
The west end.....	43	57	0	60	15	0
Halifax.....	44	39	0	63	33	40
Sambro lighthouse.....	44	28	30	63	32	30

NEW BRUNSWICK WESTERN COAST.						
Fort Cumberland.....	45	49	0	64	8	30
Cape Engagee.....	45	36	0	64	28	0
Quako lighthouse.....	45	18	0	65	27	0
Patridge Island.....	45	14	0	66	1	15
City of St. John.....	45	15	30	66	1	30
Frederickton	45	57	0	66	39	0
Campo Bello head.....	44	57	0	66	56	0

NEW BRUNSWICK EASTERN COAST.						
Cape Rosier.....	48	51	45	64	11	48
Cape Gaspe.....	48	45	10	64	9	22
Bonaventure Isle.....	48	29	30	64	9	21
Cape Despair.....	48	25	30	64	18	32
Richibacto.....	46	40	0	64	37	0
Cape Tourrintine.....	46	7	38	63	37	43
Picton Harbour.....	45	40	44	62	38	10
Picton Isle.....	45	47	52	62	33	25
Gut of Canso N. L.....	45	43	0	61	29	0

PRINCE EDWARD ISLAND.						
East point.....	46	27	0	61	45	0
North Cape.....	47	4	0	63	51	0
Cape Traverse.....	46	12	0	63	28	0

POINT PRIM, HILOBOROUGH BAY.						
Charlotte Town.....	46	14	0	62	56	0
Bear Cape.....	45	59	0	62	16	0

BRETON ISLAND AND MAGDALEN ISLAND.						
Louisbourg Lighthouse.....	45	54	30	39	55	30
Scatari.....	46	1	30	59	40	0
Sydney Harbour.....	46	18	15	68	8	30
Cape North.....	47	3	0	60	20	20
Island of St. Pauls.....	47	14	0	60	8	17

	Latitude N.			Longitude W.		
	46	26	30	50	51	30W
MAGDALEN ISLAND.						
Entry Isle E. P.....	47	17	0	61	40	30
Diadman Islet.....	47	16	8	62	12	20
Amherst Harbour.....	47	14	28	61	49	21
Coffins Island.....	47	37	30	61	23	0
Northern Bird Island.....	47	51	2	61	9	10
Byron Islet, E. P.....	47	47	58	61	24	30

COAST OF LABRADOR, THE EAST END.

Cape St. Lewis, S. E.....	52	21	24	55	38	23
St. Charles Island.....	52	12	48	55	24	32
Belle Isle, S. W. point.....	51	54	0	55	26	3
Do N. E. point.....	52	1	16	55	16	16
Battle Island, N. E.....	52	15	44	55	32	19
York Point.....	51	58	1	55	52	51
Red Bay.....	51	43	55	56	25	24
Loup Bay.....	51	31	35	56	48	50
Forteau Point.....	51	25	37	56	56	25
Bradore Hills.....	51	35	11	57	11	50
Greenly Island.....	51	23	19	57	10	34
Bradore Harbour.....	51	27	38	57	14	6
Mistanogue Isle.....	51	15	51	58	12	7
Mecattina Point.....	50	44	10	58	58	55
Cape Whittle Isle.....	50	10	44	60	6	46
Natashquan, R.....	50	7	5	61	47	43
Mingan Island.....	50	12	56	64	7	51
Seven Island Bay.....	50	13	7	66	24	7
Trinity Bay.....	49	23	47	67	18	12
Point Demonts Lighthouse.....	49	19	23	67	22	2

WEST POINT OF ANTICOSTI.

West Point.....	49	52	20	64	32	8
S. W. Point Lighthouse.....	49	23	53	63	35	47
East Cape.....	49	8	25	61	39	59
Maincougan Point.....	49	6	13	68	12	1
Quebec.....	46	19	8	71	13	0
Montreal.....	45	30	34	73	31	49

SOUTH SHORE OF THE ST. LAWRENCE.

Cape Rosier.....	48	51	45	64	10	48
Cape Chatte.....	49	6	0	66	45	19
Barnaby Island.....	48	29	43	68	32	2
Bicquette Lighthouse.....	48	25	17	68	25	14
Brandy Pots.....	47	52	36	69	40	47
Pillar Lighthouse.....	47	4	30	70	31	22

Welcome..... 2560.
Belle-Isle..... 846.

DW

30
20
21
0
10
30

23
32
3
16
19
51
24
50
25
50
34
6
7
55
46
43
51
7
12
2

8
47
59
1
0
49

48
19
2
14
47
22

