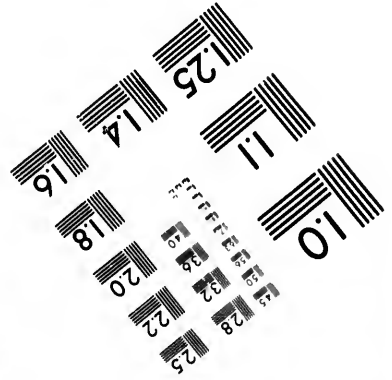
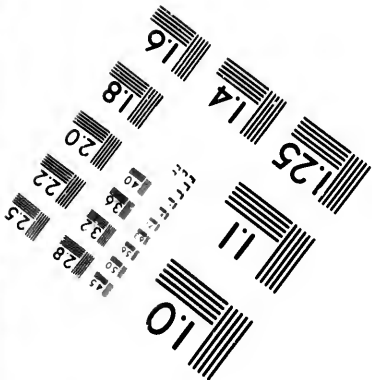
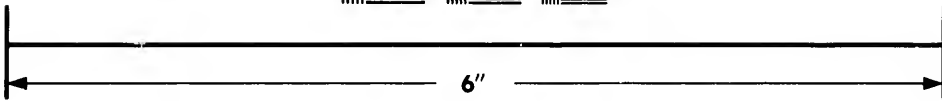
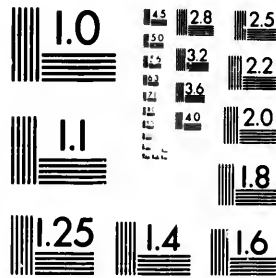


**IMAGE EVALUATION
TEST TARGET (MT-3)**



**Photographic
Sciences
Corporation**

23 WEST MAIN STREET
WEBSTER, MASS. 014580
(716) 872-4503

1.5 1.8 2.0 2.2 2.5 2.8 3.2 3.6

**CIHM/ICMH
Microfiche
Series.**

**CIHM/ICMH
Collection de
microfiches.**



Canadian Institute for Historical Microreproductions / Institut canadien de microreproductions historiques

1.5 1.8 2.0 2.2 2.5 2.8 3.2 3.6

© 1984

Technical and Bibliographic Notes/Notes techniques et bibliographiques

The Institute has attempted to obtain the best original copy available for filming. Features of this copy which may be bibliographically unique, which may alter any of the images in the reproduction, or which may significantly change the usual method of filming, are checked below.

L'Institut a microfilmé le meilleur exemplaire qu'il lui a été possible de se procurer. Les détails de cet exemplaire qui sont peut-être uniques du point de vue bibliographique, qui peuvent modifier une image reproduite, ou qui peuvent exiger une modification dans la méthode normale de filmage sont indiqués ci-dessous.

- Coloured covers/
Couverture de couleur
- Covers damaged/
Couverture endommagée
- Covers restored and/or laminated/
Couverture restaurée et/ou pelliculée
- Cover title missing/
Le titre de couverture manque
- Coloured maps/
Cartes géographiques en couleur
- Coloured ink (i.e. other than blue or black)/
Encre de couleur (i.e. autre que bleue ou noire)
- Coloured plates and/or illustrations/
Planches et/ou illustrations en couleur
- Bound with other material/
Relié avec d'autres documents
- Tight binding may cause shadows or distortion
along interior margin/
La reliure serrée peut causer de l'ombre ou de la
distortion le long de la marge intérieure
- Blank leaves added during restoration may
appear within the text. Whenever possible, these
have been omitted from filming/
Il se peut que certaines pages blanches ajoutées
lors d'une restauration apparaissent dans le texte,
mais, lorsque cela était possible, ces pages n'ont
pas été filmées.
- Additional comments:/
Commentaires supplémentaires:

- Coloured pages/
Pages de couleur
- Pages damaged/
Pages endommagées
- Pages restored and/or laminated/
Pages restaurées et/ou pelliculées
- Pages discoloured, stained or foxed/
Pages décolorées, tachetées ou piquées
- Pages detached/
Pages détachées
- Showthrough/
Transparence
- Quality of print varies/
Qualité inégale de l'impression
- Includes supplementary material/
Comprend du matériel supplémentaire
- Only edition available/
Seule édition disponible
- Pages wholly or partially obscured by errata
slips, tissues, etc., have been refilmed to
ensure the best possible image/
Les pages totalement ou partiellement
obscurcies par un feuillet d'errata, une pelure,
etc., ont été filmées à nouveau de façon à
obtenir la meilleure image possible.

This item is filmed at the reduction ratio checked below/
Ce document est filmé au taux de réduction indiqué ci-dessous.

10X	14X	18X	22X	26X	30X
<input type="checkbox"/>	<input type="checkbox"/>	<input checked="" type="checkbox"/>	<input type="checkbox"/>	<input type="checkbox"/>	<input type="checkbox"/>
12X	16X	20X	24X	28X	32X

The copy filmed here has been reproduced thanks to the generosity of:

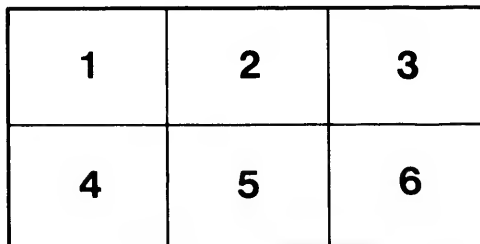
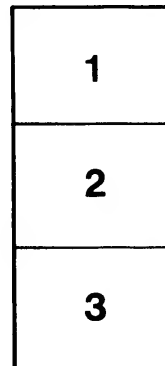
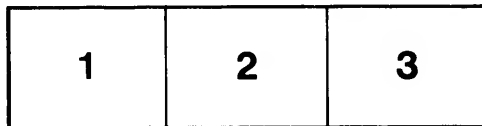
Izaak Walton Killam Memorial Library
Dalhousie University

The images appearing here are the best quality possible considering the condition and legibility of the original copy and in keeping with the filming contract specifications.

Original copies in printed paper covers are filmed beginning with the front cover and ending on the last page with a printed or illustrated impression, or the back cover when appropriate. All other original copies are filmed beginning on the first page with a printed or illustrated impression, and ending on the last page with a printed or illustrated impression.

The last recorded frame on each microfiche shall contain the symbol \rightarrow (meaning "CONTINUED"), or the symbol ∇ (meaning "END"), whichever applies.

Maps, plates, charts, etc., may be filmed at different reduction ratios. Those too large to be entirely included in one exposure are filmed beginning in the upper left hand corner, left to right and top to bottom, as many frames as required. The following diagrams illustrate the method:



L'exemplaire filmé fut reproduit grâce à la générosité de:

Izaak Walton Killam Memorial Library
Dalhousie University

Les images suivantes ont été reproduites avec le plus grand soin, compte tenu de la condition et de la netteté de l'exemplaire filmé, et en conformité avec les conditions du contrat de filmage.

Les exemplaires originaux dont la couverture en papier est imprimée sont filmés en commençant par le premier plat et en terminant soit par la dernière page qui comporte une empreinte d'impression ou d'illustration, soit par le second plat, selon le cas. Tous les autres exemplaires originaux sont filmés en commençant par la première page qui comporte une empreinte d'impression ou d'illustration et en terminant par la dernière page qui comporte une telle empreinte.

Un des symboles suivants apparaîtra sur la dernière image de chaque microfiche, selon le cas: le symbole \rightarrow signifie "A SUIVRE", le symbole ∇ signifie "FIN".

Les cartes, planches, tableaux, etc., peuvent être filmés à des taux de réduction différents. Lorsque le document est trop grand pour être reproduit en un seul cliché, il est filmé à partir de l'angle supérieur gauche, de gauche à droite, et de haut en bas, en prenant le nombre d'images nécessaire. Les diagrammes suivants illustrent la méthode.

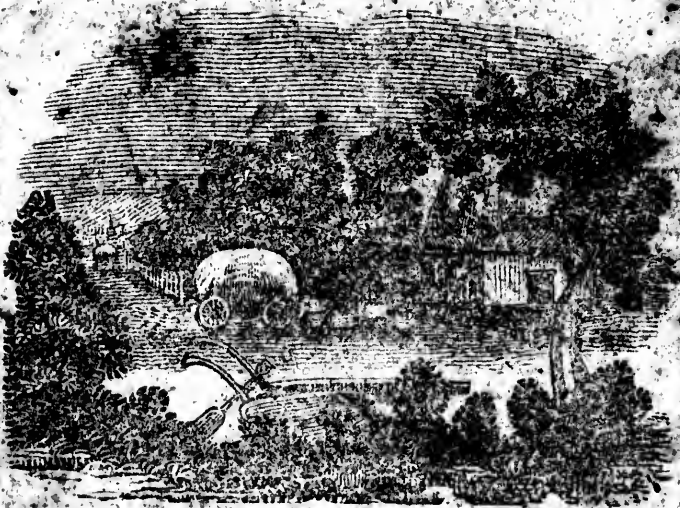
BELCHER'S FARMER'S ALMANACK.

FOR THE YEAR OF OUR LORD,

1833;

Being the First after Bissextile, or Leap Year,
CALCULATED FOR THE MERIDIAN OF HALIFAX,
BUT WILL SERVE FOR ANY PART
OF THE PROVINCE.

Containing, besides the large number of Astronomical Calculation
and the Farmer's Calendar for every month in the year, a
great variety of useful and entertaining matter.



"The world is a glasse wherein we may contemplate
the eternal Power and Majesty of God: it is that great
booke of so large a character, that a man may run and read
it; yea, even the simplest man that cannot read, may yet
spell out of this booke that there is a GOD. Every Shepherd
hath this Calendar, and every Ploughman this A. B. C."

Purchas

— ☉ —
SOLD BY C. H. BELCHER,

HALIFAX, N. S.

2
Signals made at the Citadel Hill when Vessels are coming up the Harbour.

One ball close, a square rigged vessel	do. under a ball, 6 do
One ball half hoisted, 2 do	do over a ball half hoisted, 7 do
Two do close, 3 do	do under 2 do close, 8 do
Two do separated, 4 do	do between 2 do separated, 9 do
A Pendant of any colour, . . . 5 do	Flag of any colour, 10 or more do

The above are hoisted at the east or west yard arm, according to the quarter the vessel first appears in, with the addition of a ball at the centre of the yard, until the vessel can be seen, when one or more of the following descriptive colours will be hoisted at the mast head.

- An Union; a flag ship, with or without a squadron.
- Do. with a red pendant over it, a two decker.
- Do. with a blue pendant over it, a frigate.
- Do. with a white pendant over it, a small armed vessel.
- A red flag pierced white, a packet.
- A blue pendant, a merchant ship.
- A red do. a merchant brig.
- A white do. a topsail schooner or sloop.
- A blue and white flag, horizontally divided, neutral fleet.
- A white and blue pendant, neutral man of war.
- A blue flag, neutral merchant ship.
- A red, white and blue flag, an enemy's fleet.
- A red flag, an enemy's merchantman.
- An Union Jack over neutral or enemy's signals, vessel is detained or prize.
- A white flag over any signal, vessel bears a flag of truce.
- A ball at the mast head, vessel is on shore in distress.—Should immediate aid be necessary, guns are to be fired.

Explanation of Signals.

Made on the ensign Staff at Citadel Hill, to denote the part which vessels entering the Harbour are from.

- A red flag, Great Britain.
- A red and white do. Mediterranean.
- A red pendant, Continent of Europe.
- A white & red pendant, Madeira, Canary, or Western Isles.
- A blue flag, West Indies.
- A blue pendant, Bermudas, Baltamas, or Turk's Island.
- A blue and white flag, United States.
- A white flag, Newfoundland.
- A red and white flag, horizontally divided, Quebec, or Gulf of St. Lawrence.—A blue and white flag, horizontally divided, New Brunswick, or Bay of Fundy.
- A white & blue pendant, vessel has an English mail on board.
- A white pendant, coasts of Nova Scotia and Cape Breton.

Repeat from Out Posts at Citadel Hill.

For a square rigged vessel, two balls of a size.—A Ship, a large ball at the end of the yard with a small one in the centre.—A brig, a small ball at the end of the yard, with a large one in the centre.

A lozenge in the centre close up, a sloop or schooner.
Do. half hoisted, two or more schooners.

Merchant's Private Signals—Port of Halifax.

- BLUE—J. H. Tidmarsh, a blue flag.
A. Belcher & Co.....do.....crossed white.
S. Cunard & Co.....do.... centre a white star
Wm. Story.....do....do,.. a white square
John Clarkdo....crossed white diagonally
Wm. Pryor & Co. a blue & white do. blue uppermost
M. Richardson, a blue and red do. blue next the mast
Geo P Lawson, a blue and white chequered do
Wm B. Hamilton & Co. a blue, white & blue do. blue uppermost
Jas Oswald, a blue, white and red do. blue uppermost
Francis Stevens, a blue, white & blue do. blue next the mast
W. & R. Lawson, a blue & white do. crossed diagonally
W. M. Deblois, a blue do, bordered white, centre a D enclosed
by two triangles reversed.
M. B. Almon, a blue & red do. crossed white, blue next the mast.
Joseph Allison & Co. a blue burgee.
Conrad West, do. centre a white star.
G & A Mitchell, a blue & white do. blue uppermost
RED,—D & E Starr, a red flag
J & M Tobin, do crossed white.
Creighton & Grassie, do crossed white diagonally.
Deblois & Mitchell, do. centre a white square
Chas & W Roche, do. centre a white diamond
B. Zwicker, do. centre a Z.
Boggs & Hartsborne, a red and white chequered flag
E. Collins & Co. a red and yellow flag, horizontally divided
Thos Tobin, a red and white do. crossed diagonally
Thos Laidlaw a red, white & red do. red uppermost
Fiddes & Robertson, a white & red do. red uppermost.
Robert Noble, a red do. centre an N.
John Brown & Sons, a red burgee, centre a B
James Leishman & Co....do....crossed white diagonally.
White.—J. & T. Williamson, a white flag.
J. J. Starr, } do. centre a blue star.
W. J. Starr, }
Fairbanks & M. Nab, do. crossed blue.
James G. Ritchie, do. striped blue horizontally.
John & H. Grant, do. centre G. S.
William Stairs, do. centre a blue square.
John A. Barry, do. crossed red.
T. M. Morris, do. centre a blue ball, & bordered blue.
W. Strachan, a white, red & white do. white next the mast.
Joseph & David Starr, a white burgee.
Reynolds & Co. a white do. crossed red.
Halifax & Liverpool Packet Company, a white, blue, white
and red do. white next the mast.
Yellow.—Temple & Lewis Piers & Co. a yellow flag, centre
a blue ball.

L'Epousie & Hall, a yellow & blue chequered do.

The foregoing Signals are worn at the main. Upon vessels arriving in sight from the LightHouse so wearing a signal, a similar one is hoisted on the Telegraph Staff, or at the yard arms of the Signal Staff at Citadel Hill, with a pendant under it, descriptive of the class of vessels to which she belongs.

ROADS to the Principal Towns in the Province, with the names of Innkeepers and Distances, and the roads to St. John and Fredericton, N. B.

Halifax to Digby.	Digby,	9	Witter's,	Tru-
Birch Cove Hotel	5	Everet's, Wey-	13	ro, 7
Rockingham,	1	mouth road,		(64)
Gough's	2½	Cosman's, Wey-	7	Gourley's, Onslow, 5
Fu'tz's,	3	mouth Church	6	Yewill's, Lower
Hamilton's	4	Journie's, Scissiboo	1	Village, } 14
Hiltz's	9	Cosman's, Clare,	4	Clark's, foot of } 6
Fitzmaurice's	1½	Ferrian's, Monta-	15	Cob. Mountains } 6
Pence's,	3½	gan Cove,	15	Purdy's, top of do. 6
M'Lellan's,	4	Corning's, Bear	14	Hewson's, Riv-
Terfry's, Newport.	5	River,		er Philip, } 9
Road, (35)	5	Parry's, Yarmouth	8	Stewart's,
Wallace's,	1	Lakes	8	Bent's, Amherst, 10
Mrs Wilcox, Wind-	9	Smith's—Richan's,	5	Wetherhead's } 7
sor, (45)	9	Yarmouth Church,	10	fort Cumberland. } 7
Songster's, Fal-	4	Blanvelt's, Tuskett	10	
mouth bridge,	4	Nickerson's, Apub-	8	131
Smith's.	1	tic river,	8	To Fredericton, N.B.
Northrup's	5	Spinney's, Apublic	5	Bent's, Amherst 125
Morton's	4	Bay.	5	Wells', Hewson's,
Graham's,	6	Larkin's, Pubnico	10	Tantramare
Fowler's	6	Kendrick's, Bar-	13	Marsh 10
		rington.	13	Bass' Sackville, 9.
Strickland's,	6	Powell's, riv. Clyde,	5	Morrison's, Dor-
Watt's	6	Hargraves, Shel-	16	chester 9
Sharp's,	7	burne,	16	Joseph Black's 3
Crauc's,	8		162	Ben Charters', 5
Harris's,	1			Harper's & Kelly's,
Gibbon's,	12	Hx. to Cumberland.		bend of the Petti-
Leonard's,	10	Fu'tz's,	11½	codiac river, 15
Bridgetown,	5	Fletcher's	6	Jacques' 15
Annapolis town	15	Shultz's	5	Scott's 3
Ditmars,	8	Hall's	3	Blakeney's 3
Winchester's	5	Keys'	6	Pittfield's 10
Digby, Ruggles'	7	McKeen's	3½	Cougles, Sussex
	149	Corbett's,	3	Vale 13½
		Miller's,	3	Baxter's, Finger
Annapolis to Shel-		Gay's	7½	Board 12
burne.		River,	1½	Gilles', head of
Clements Church,	6	Sibtey's,	1½	Bellisle, 5
Bear River Bridge,	3	Hill's,	3	Cromwell's, 5
		Polly's	3	Watson's, Washa-
		Clark's	7	

domoak.	1	Halifax to Pictou via	Johnson's, Ham-
Nevers' & Oakley's		Musquodoboit.	mond's plains, 12½
Gimseg,	7	Dartmouth across	Phillipps', Ingraham
Tilly's,	10	the Ferry,	River 13
Widow Purley's	10	Preston,Bradley's	Herberts Cove 7
Fredericton,	10	Putnam's farm	Lovett's, Chester 12
	292	Hart's,	5 Gold river 6
To St. John, N. B.		M'Keen's,	11 Blackhouse's 4
Baxter's, at the Fin-		Leckie's,	13 Martin's river 3
ger Board,	237	Archibald's	4 Ernst's, Mushamush
from Baxter's to		Geddes'	4 river, 5
De Forrest's,		Heney's,	4 Mrs Zwicker's, } 2
Hampton Ferry, 12		Dunbar, W. branch	Mahone Bay }
Beatie's, Hammond'		E. River, Pictou, 26	Heckman's, Lunen-
River.	10	M'Kay's,	burg (70½) 6
St. John,	14½	Fraser's.	7 Jon Pernette's ferry
	273½	Across the harbour	at Lahave river 7
To Cumberland via		to Walmsley Court	across the ferry ½
Windsor		House,	1 Mrs Mannings, } 7
Windsor,	45		Petite Riviere }
Parrsboro' by wa-		Halifax to Antigo-	Teals, Broad Cove 4
ter,	*30	nish.	Mack's, mill village 9
Fullerton's,	11	Blanchard's, West	Liverpool Town 8½
Jenks'	½	River, Pictou, 92	107
Furlong's, Macan		Chisholm's, New	Port Mouton 10
River,	6½	Glasgow	Port Jolly. 5
Pugsley's, Napan,	9	Sutherland's, Meri-	Sable River 10
Bent's, Amherst,	9	gomish,	Jordan River 8
Wetherhead's,		Murray's	10 Shelburne 7
Fort. Cumberland,	7	Mc Donald's, Gulf	147
	118	Shore,	10 Halifax to Shuben-
Halifax to Pictou.		Mrs Simmond's and	acadie.
To Truro,	64	Walmsley's,	16 Terfry's 35
Lyons',	7		145 Cochran's 4
Archibald's, Sal-		The road over the	Murphy's, Rawdon
mon River,	8	Antigonish moun-	Church 8½
Stewart's, Mount		tains shortens the	Henry Blois' Cove,
'Tom,	10	above distance a-	Douglas 11
Blanchard's, }		bout 10 miles.	Kennetcook bridge 4
West River }	3	Hx. fo. Shelburne via	Mouth of the Shu-
Pictou town	10	Lunenburg & Li-	benacadie river 16½
	162	verpool.	79

* The Parrsboro' Packet sails regularly to Windsor and Horton every week, from the 1st April to Christmas: leaves Parrsboro' on Monday [wind and weather permitting] so as to be at Windsor on Tuesday, and will sail from thence for Parrsboro' the first high water that happens at or after 8 o'clock

in the morning—leaves Parrsboro' on Thursday, so as to be at Horton on Friday, and will sail from thence for Parrsboro' the first high water at or after 8 o'clock in the morning. The Packet frequently goes to Windsor twice a week. The column of the Moon's southing in the Calendar pages, is the time of high water at Windsor, Horton, &c.

MAIL COACHES.

The Royal Western Mail Coaches run from Halifax to Windsor, Kentville and Annapolis, and from Annapolis to Kentville, Windsor and Halifax, **THREE TIMES A WEEK**,—leaving Halifax and Annapolis on the mornings of *Tuesday, Thursday* and *Saturday*, and leaving Kentville for Halifax and Annapolis, on the mornings of *Monday, Wednesday* and *Friday*, at 5 o'clock precisely, until 1st August, and from thence at 6 o'clock.

FARES.		£	s	d
From Halifax to Windsor		0	15	0
—————Kentville.....		1	6	3
—————Bridgetown.....		2	0	0
—————Annapolis.....		2	0	0
—————Kentville to Bridgetown.....		0	15	0
—————Annapolis		1	0	0
—————Windsor to Kentville		0	11	3
—————Bridgetown		1	6	3
—————Annapolis		1	11	3

Agents, Mr. ISRAEL ALLISON, Water St. near the Bank. Windsor, Mr. JOHN STARK; Kentville, Mr. STRICKLAND; Annapolis, S. COWLING, Esq.

The Eastern Mail Coaches leave Halifax and Pictou on the mornings of Monday, Wednesday, and Friday, at 6 o'clock, *a m*; and arrive at Halifax on the evenings of Tuesday, Thursday and Saturday at 2 o'clock *p. m*.

Agents, Halifax, Mr. HUGH CAMPBELL, Upper Water St. opposite the Ordnance; Pictou, Mr. JAS. PRIMROSE.

<i>FARES.</i> —From Halifax to Truro.....	£1	0	0
—————Pictou.....	1	10	0
—————Truro to Pictou.....	0	12	0

The Henrietta Steam Boat, plies **THREE TIMES A WEEK** between St. John, Digby and Annapolis, and St. John, Eastport, and St. Andrew's, carrying the mails and passengers.

Monday, leaves St. John for Digby and Annapolis; returns from Annapolis (touching at Digby) to St. John, on Tuesday.

Wednesday, leaves St. John for Eastport and St. Andrews; returns from St. Andrew's (touching at Eastport) to St. John, on Thursday.

Friday, to Digby and Annapolis, returning on Saturday—Time of leaving, 7 o'clock in the morning.

	Summer.	Winter.
<i>FARES</i> —from St. John to Digby,	\$1½	\$2
—————Annapolis, 2	2½	2½
—————Eastport, 2	2	2½
—————St. Andrews 2½	2½	3.

ABSTRACTS FROM THE JOURNALS

Of the House of Assembly, for 1832.

The Joint Committee of His Majesty's Council and House of Assembly, appointed to examine the Public Accounts, reported 3rd. Feb. 1832, as follows:—

TREASURER OF THE PROVINCE.

His Accounts, to the 31st Dec. last, have been received, there is due him £61 16 1
COLLECTORS OF IMPOST AND EXCISE.

Halifax.—His Accounts, to the same date, have been received; Bonds in his hands £38,358 5 10

He has collected and paid the Treasurer, on account of the Poor, for 5 Quarters, 706l. and has Bonds for £451 8 9

Shelburne.—His Accounts, to the same date, have been received. Bonds in his hands 1,405 8 8

Yarmouth.—His Acts, do. 715 8 6

This sum charged by him, as Commissioner on sundry Drawbacks, as heretofore reported, has not been refunded, or any notice of it in his accounts, the Committee being dissatisfied with the charge 87 3 7

802 12 1

Lunenburg.—His Accounts, do. do. 1,113 15 3

Liverpool.—His Accounts, do. do. and are correct, with the exception of £14 8 6 charged for Commission on Guager's Salary, he is therefore accountable for this sum in addition to Bonds in his hands. . . 2,522 10 6

KING'S COUNTY.—His Accounts, do. do. 169 6 0

Cumberland.—His Accounts, do. do. 71 3 1

Pictou.—His Accounts, do. do. 721 4 3

Annapolis.—His Accounts, do. do. 41 0 6

SYDNEY COUNTY.—His Accounts, do.

Balance of Bonds, do. 120 17 8½

He has charged for the last 2 years, £52, per annum for a Waiter, which the Committee do not approve of, and know not of any authority he had for it.

Carried forward. £45,326 3 10½

s to be
rsboro'
orning.
The
is the

ifax to
olis to
EEK,—
uesday,
Halifax
ay and
d from

s d
15 0
6 3
0 0
0 0
15 0
0 0
11 3
6 3
11 3
Bank.
RICK.

on the
, a m;
day and

Water
SE.
0 0
10 0
12 0
WEEK
East-
gers.
eturns
sday.
drews;
John,
day—

Brought forward. £45,326 3 10½

Weymouth.—His Accounts, do. do.

Bonds in his Hands.....521 3 9½

Digby.—His Accounts, do. do.....42 8 1

Archat.—His Accounts, do. do.....1,097 14 5

Amherst.—His Accounts have been received to the 31st December last.

Bonds in his hands.....53 5 8

Hants.—His Accounts, do. do.....571 16 5

Port Hood.—His Accounts, do. do. incorrectly stated, he is accountable as

corrected for.....208 17 9½

Argyle.—His Accounts Current for the Years, 1829 and 1830, to the 31st Dec. have been received, in Account for 1829, he has taken credit for Van Norden's Bond for £37 13 4 and for Commission on that sum £5 13, which is not correct, and must remain accountable the amount say£43 6 4

Bonds in hands.....175 19 3

-----£219 5 4

No Account Current, for 1831.—

Quarterly Returns have been received for 3 Qrs, March 14s 1d;

June, £22 3 2½; Dec £55 2 2½—77 19 6—297 4 10

Sydney, Cape-Brcton.—His Accounts Current have been received to the 31st Dec. 1830. Bonds in his hands at that time,396 7 0

By Report of the Committee, in Feb. 1830, he had overcharged in his Account for 1829, this sum, of which he takes no notice,10 0 0

-----£406 7 0½

No Account Current for 1831,

Quarterly Returns have been received to 30th Sept. amounting to 262 12 8

-----£668 19 8½

It appears by the Treasurer's Ac-

count he has paid.....200 0 0 468 19 8½

Carried forward, £48,587 14 7

He has collected for the support of the Poor, 23l. 7s 2½d but does not state how it is disposed of.

Colchester.—His Accounts to 31st Dec. last, have been received, incorrectly stated, he is accountable as corrected for. 509 5 ½

£49,096 19 8½

He has transmitted to the Commissioners of the Revenue, R. C. Blair's Bond, dated 16th July, 1829. Balance due thereon 75l, to be prosecuted.

He has produced two entries for Rum imported by P. Martin, in 1830, the Duties thereon 36l. 12s 3d, which Mr. P. Martin refused to give Bond, or pay for. He has sent a statement wherein he makes William Frieze and others, indebted for 37l. 12s 4d and costs 6l 8d 1d without date or Bond. He has sent a Bond signed by the same persons for 10l 5s, dated 28th April, 1824; and one other Bond, signed by James Sly and others, for 34l, dated 9th June, 1824; also a Note of hand signed by J. Graham in his favor for 14l. 18s 1d, dated 2d Sept. 1829, purporting to be for Balance due on settlement of Accounts to that date, all of which persons he states have become Insolvent, amounting to 133l. 7s 8d.

LOAN OFFICES.—*King's County*.—The whole amount of Loan has been paid and received.

Annapolis.—The Commissioners Account has been received to 31st Dec. last, by which it appears he has collected 104l 16s 3d, by the Treasurer's Account it appears he has remitted 192l 17s 7½d. He has also sent a statement by which there is still due on principal 790l. 9s, and Interest 360l. 1s 1d, in all. £1,150 10 1

ISLE OF SABLE.—The former Commissioner's Accts. to the 31st Dec. last, have been received. Balance in his hands. 906 1 10½

By his statement there is due to the Superintendent and Servants. 632 18 4

£273 3 6½

The present Commissioners report that the Salvage awarded on the Brig Orpheus, is not yet received, but will appear in Accounts for 1832. 275 0 0

£548 3 6½

Light-Houses, collected and paid per Accounts.

	in 1830,			in 1831,		
Halifax.....	£351	19	10£995	13	7
Liverpool.....	112	15	689	10	9½
Shelburne.....	48	6	229	10	2
Yarmouth.....	50	1	8½27	14	1½
Annapolis.....	18	0	010	16	0
Colchester.....	10	7	010	0	0
Pictou.....	41	0	00	0	0
Argyle for 1829,	17	16	50	0	0
Digby.....	12	10	012	10	0
Sydney.....	138	0	0100	4	7½
Weymouth....	17	16	20	0	0
Amherst.....	0	0	014	0	0

£818 12 9½ £1289 19 3½--2108 12 1

Digby.—The Collector still remains due as reported in Feb. last, for the years 1826, '27, and '28.....49 9 5

Pictou.—His Account for 1831, has been received, amounting to 59l. 10s 9d. Also for 1830, amounting to 86l. of which 41l. was paid. The Treasurer reports that he has received the amount say 104l. 10s 9d since closing his Accts. 104 10 9

Sydney.—His Accounts for 1830 and 1831, have been received. He had made a charge in 1829, of 64l. for expenses attending the keeping a Boat, which the Committee reported at that time was an expense that ought not to have been incurred and recommended that the Boat be sold, he has made a similar charge of 54l. which the present Committee deem improper, he is now indebted after deducting the above charge for the year 1830, 74l. 3s 11d. 1831, 136l. 11s 4d. 210 15 3

No Quarterly Return for December Quarter.

County of Sydney.—The Collector's Accounts for the years 1830 and 1831, have been received, Balance for 1830, 138l. paid Balance for 1831, 126l. 10s 4½d of which he has paid 100l. 4s 7½d leaving this amount due..... 26 5 9

He has charged the sum of 28l. 6s 6d in 1830, and 38l. 11s 2d in 1831, being as he states 1-5th of the sum collected, independent of the usual Commission of 10 per Cent. which he has charg-

Carried forward, £391 1 2

Brought forward, £391 1 2

counts.

ed on 367l. 17s 8d when he has collected only 334l. 8s. 8d.

Hants.—No Accounts or payments for 1830 and 1831.

Argyle.—No Account for 1831.

Lunenburg.—No Account or payments for 1830 and 1831.

Arichat.—His Account for 1830 has been received, he has collected but not paid 54l. 6s 11d.

No Account or payment for 1831 54 6 11

£445 8 1

The Commissioners Accounts to 31st Dec. last, have been received for supplies, &c. amounting to 1753l. 17s. 2d. they have received from the Treasurer 1000l. leaving a Balance due them of..... 753 17 2

It appears by the Treasurer's Account he has received from the Province of New-Brunswick, 440l. for the years 1830 and 1831.

PROVINCE NOTES.—Amount of Notes in Circulation, 30th Sept. 1831..... 53,999 10 0
 Delivered the Treasurer in lieu of Torn and Defaced Notes..... 13,000 0 0
 Delivered the Treasurer in Notes of 10s..... 1,000 0 0

£67,999 10 0

Notes received and destroyed by Committee, 13,000 0 0

Leaving in Circulation 31st Dec. 1831 £54,999 10 0



The Committee recommend, that a Law be passed to render the powers of the Commissioners of the Revenue more efficient and better defined. It would seem expedient to point out by Law, the control which that Board should exercise over Out-port Collectors, and all Public Accountants, that they may be enabled at any time to ascertain the true state of the Revenue.

The Committee find that some of the Out-port Collectors are negligent in rendering their Accounts, and delinquent in payments, and have been so reported for years past, but no effectual measures have been taken to remedy the evil.

08 12 1
 orted in
 19 9 5

4 10 9

0 15 3

5 5 9

The Province of Nova-Scotia, Dec. 31st. 1831.

DR.—To balance due the Treasurer	£61	16	1
This sum appropriated on acct. of Roads and Bridges } and other Services not yet drawn from the Treasury, }	7,065	4	9
Loan Certificates due sundry persons	21,459	7	6
Notes in circulation to date	54,999	10	0
Survey of Boundary Line	400	0	0
Small Harbor in Seal Island	100	0	0
Light House on Cross Island	750	0	0
Protect Barrington Beach	30	0	0
Settler between Musquodoboit and St. Mary's	50	0	0
Balance due for Bounty on Iron	400	0	0
Do. Grist Mills in Cape Breton	60	0	0
Do. For encouragement of the Fisheries	149	13	8
Do. Do. for Schools	3,681	12	8
Do. Post Communication	88	16	1
Do. S. Green, pension for 3 years	60	0	0
Do. Seal Island Light House	480	0	0
Do. Isle of Sable	800	0	0
Furniture for Council	200	0	0
Steam Boat Quebec, bal. for 2 years	1,900	0	0
School House Sydney, C. B.	200	0	0
Bal. due Hitchins and Cro well, Seal Islands	25	0	0
Assist the Inhabitants at Cape Sable to erect an Aboiteau, 100	0	0	0
Briar Island Light House	1,000	0	0
Drawback on Wines for Officers of the Army,	300	0	0
Steam Boat between Annapolis & St John, & 200l. for 3 yrs. 1,100	0	0	0
Bal. due sundry persons on acct. of Province Building, 378	6	7½	
Do. Commrs. of Light Houses	753	17	2
Do. Eastern Stage Company for 1832, '33, and '34.	750	0	0
Do. Western Stage Do. for 1832 and '33	500	0	0

£97,043 4 6

CR.—By Loan to Dalhousie College	£5,000	0	0
Securities on the Estate of Collector of Lunenburg	286	7	0
Loan to Annapolis County	1,150	10	1
Due by the Comm'rs of Isle of Sable.	548	3	6½
Due by Collectors of Light Duties	445	8	1
Securities in the hands of the Collec- } tor of Impost and Excise, Halifax }	£38,358	5	10

Deduct probable drawbacks

12,358	5	10	—26,000	0	0
Securities in possession of Out-port Collectors, viz:					
Shelburne	£1,405	8	8	Weymouth	521 3 9½
Yarmouth	802	12	1	Digby	42 8 1
Lunenburg	1,113	15	3	Arichat	1,097 14 5
Liverpool	2,522	10	6	Amherst	53 5 8
King's Co.	369	6	0	Hants	571 16 5
Cumberland	71	3	6	Pord Hood	208 17 9½
Pictou	721	4	3	Argyle	297 4 10
Annapolis	41	0	6	Sydney, C.B.	468 19 8½
Sydney Co.	120	17	8½	Colchester	509 5 1½

£10,738 14 3½

Deduct probable Drawbacks	3738	14	3½	—7,000	0	0
By Balance	56,612	15	9½			

£97,043 4 6

PORT OF HALIFAX, N. S.....An Account
of the quantity of Beef and Pork imported into,
and exported from, this port, for the years 1830
and 1831, distinguishing British from Foreign.

	<i>Beef and Pork.</i>			
	British.		Foreign.	
IMPORTS FOR 1830.	Bbls.	$\frac{1}{2}$ Bbls.	Bbls.	$\frac{1}{2}$ Bbls.
Inwards, Coastwise, . . .	1996	169	100	
Do. Great-Britain, . . .	297			
Do. U.States,(For.Ships)			1062	137
	2293	169	1162	137
EXPORTS FOR 1830.				
Outwards, Coastwise . .	491	26	1157	128
Do. British West Indies	972	350	24	5
	1463	276	1181	133
IMPORTS FOR 1831.				
Inwards, Coastwise . . .	677		15	
Do. Great-Britain	60	10		
Do. U.States,(Brit.Ships)			5109	117
Do. Do. (For.Ships)			1000	20
	737	10	6124	137
EXPORTS FOR 1831.				
Outwards, Coastwise . . .	802	40	1400	50
Do. British West-Indies	917	98	2951	131
	1719	138	4351	181

An Account of the Beef and Pork under the
Crown's Lock, 5th January, 1832.

BEEF.			PORK.		
Bbls.	Cwt.	Qrs.Lbs.	Bbls.	Cwt.	Qrs.Lbs.
105	187	2 8	10	17	3 12
100	178	2 8	10	17	3 12
75	133	3 20	30	53	2 8
280	501	0 0	50	89	1 4
29	52	3 4			
97	173	0 24			
243 & $\frac{1}{4}$ bbl	434	3 8			
929 $\frac{1}{4}$	1661	3 16	100	178	2 8

ABSTRACT of Dutiable Goods, imported into the Province of Nova-Scotia, between the 1st of October 1830, and the 31st December 1831, for which the Duties have been paid or secured at the Excise Office, under the Acts of the Provincial Legislature.

COUNTRIES.	Wine, Gallons and Gin.	Rum, Brandy, and Gin.	Bread Cwt.	Sugar, Cwt.	Amount of Goods imported, paying ad val. Duties.	Total amount of Duties.		
						£	s	
Halifax.....	60,964	940,617	.. 262	27,263	£357,774	4	0	
Liverpool.....	.. 92	67,780	.. 1302	.. 1302	390 1 15	9	3705	
Lunenburg.....	25,412 1281	257 4 18	2	1508	
Yarmouth.....	15,181 1111	4050 6 0	4	1050 17	
Arichat, C.B.....	.. 145	14,045 09	7153 5 103	3	995 0 54	
Pictou.....	.. 934	.. 5,780 228	1,140 10 0	3	826 2 5	
King's County..... 9,771	.. 24	.. 159	1257 13 7	7	555 19 64	
Shelburne.....	20,780 81	842 16 6	6	1528 4 3	
Sydney, C. B.....	.. 380	.. 2064	1534	.. 91	4836 3 6	6	354 13 3	
Hants County..... 6901 812	852 17 24	24	416 2 6	
Annapolis..... 1342 135	2665 10 4	4	162 14 11	
Digby.....	.. 14	.. 873 25	988 8 4	4	82 14 64	
Colchester..... 4277 391	343 1 1	1	975 16 9	
Weymouth..... 6539 171	500 0 0	0	337 1 6	
Sydney.....	.. 87	.. 860 64	2036 10 0	5	121 10 34	
Argyle..... 1931 138	722 13 0	5	83 13 24	
Cambridland..... 107 96	1854 15 0	8	98 6 14	
Port Hood.....	.. 36	.. 4691 9	395 0 0	0	246 6 0	
Total.....	62,657	1,137,141	421	32,895	£403,248	6	0	£82,045 17 3

Account
ed into,
rs 1830
oreign.

Pork.	oreign.	ls.	½ Bbls.
00			
62	137		
62	137		
57	128		
24	5		
31	133		
15			
09	117		
00	20		
24	137		
00	50		
51	131		
51	181		
nder the			
Lbs.			
12			
12			
8			
4			

British North American Colonies.

Provinces.	Population.	
LowerCanada(1825)	423,630	Lord Aylmer, <i>Gov. Gen.</i> . . .
UpperCanada(1829)	220,897	Sir John Colborne, <i>Lt. Gov.</i> . .
Nova-Scotia, (1827)	123,848	Sir Peregrine Maitland, <i>Lt. Gov.</i>
N. Brunswick.(1824)	74,191	Sir Arch. Campbell, <i>Lt. Gov.</i> . .
Newfoundland Isl..	80,000	Sir Thomas J. Cockrane, <i>Gov.</i>
Prince Edward Isl..	24,000	Sir Murray Maxwell, <i>Lt. Gov.</i>

British Slave Colonies in the West-Indies, &c.

Much excitement has existed in England, for several years past, on the subject of negro slavery; and great exertions have been made by a large and respectable body of English philanthropists, and are still in progress, to effect the total abolition of slavery in the British Colonies.

The following table presents a view of the number of whites, slaves, and free blacks, together with the names of the governors of the principal British colonies in which slavery exists.

Chartered Colonies.	Whites	Slaves.	Free Blacks.	Governors.
Jamaica	15,000	531,000	40,000	Earl of Mulgrave
Barbadoes	15,000	81,000	5,000	Sir James Lyon
Antigua	2,000	30,000	4,500	Sir Patrick Ross
Grenada	800	24,500	3,700	Sir James Campbell
St. Vincent	1,300	23,500	2,900	Sir George F. Hill
St. Christopher's. . .	1,800	19,500	2,500	William Nicolay
Nevis	800	9,000	1,800	Wm Boothby, <i>Lt. Gov.</i>
Virgin Isles.	860	5,400	607	Jas. Bathurst, <i>Lt. Gov.</i>
Dominica	800	14,500	3,600	
Tobago	350	12,700	1,200	Nathaniel Blackwell
Montserrat	500	6,000	700	Sir P. Steward, <i>Lt. Gov.</i>
Bahamas.	4,000	9,500	2,800	Sir Jas. Carm. Smyth
Bermuda.	5,500	4,650	500	Stephen R. Chapman
<i>Crown Colonies.</i>				
Trinidad	13,500	23,000	16,000	Lewis Grant
St. Lucia	1,100	13,500	4,000	
Honduras	300	2,450	2,800	
Demerara & Essequ.	3,000	70,000	6,000	Sir Benj. D'Urban.
Berbice	600	21,000	1,000	Henry Beard, <i>Lt. Gov.</i>
<i>Africa.</i>				
Cape of Good Hope	43,000	35,000	29,000	Sir G. Lowry Cole
Mauritius	8,000	76,000	15,100	Sir Charles Colville
	103,150	812,700	143,707	

Bishops.—Charles J. Stewart, D. D. Bishop of Quebec; John Inglis, D. D. Bishop of Nova-Scotia; Christopher Lipscomb, D. D. Bishop of Jamaica; William H. Coleridge, D. D. Bishop of Barbadoes and the Leeward Islands.

Golden Rules for English Magistrates.

By Sir Richard Phillips.

1. The people's estimation of the government under which they live, being founded on the pure, just, and rational administration of the laws, it ought to be felt that no social duties are more important and obligatory than those of a local magistrate or justice of the peace.

2. All such magistrates, being representatives, in regard to their particular powers, of the constitutional authority of the supreme executive government, they are bound in every act of their office to consider themselves as delegates of the sovereign, and in consonance with the royal oath, "to execute law and justice in mercy and to govern the people according to the statutes agreed on in parliament, and to the laws and customs of the kingdom."

3. An English magistrate should always bear in mind that the supreme executive authority, of which he is the local representative, is restricted in its powers, by the laws and the constitution; that the rights and privileges of a free people are as inviolable as the prerogatives of the sovereign; and that English magistrates are not instruments of a despotic power, but agents of a constitutional monarch, whose obligations to his people are determined by the same laws that constitute the obligations of the people.

4. An English magistrate should feel that every subject of these realms, be he rich or be he poor, be he accuser or under accusation, is equal in the eye of the law; that the laws of England are no respecters of persons; that they can never be dispensed with to suit the honour of the magistrate or the policy of the crown; and that they are literally imperative in their popular sense, until they have been altered or repealed by the conjoint authorities which made them.

5. The cardinal virtues of all magistracy are INCORRUPTIBILITY, IMPARTIALITY, VIGILANCE and BENEVOLENCE.

6. An incorruptible magistrate will not only be incorruptible in his own conduct, directly and indirectly, immediately and remotely; but he will exercise a wholesome

suspicion in regard to the possible corruptions, extortions and oppressions, practised by his clerks, constables, officers, and other agents of his authority.

7. An impartial magistrate will jealously guard every avenue of his mind against the vice and weakness of partiality; he will be careful not to be influenced by *ex-parte* statements, by crafty or malignant insinuations, or by interested and vulgar prejudices; and he will never fail to remember that, although justice is blind in regard to the parties, she is all eye in her search after the truth.

8. A vigilant magistrate will always hear both sides before he makes his determination; he will patiently submit to the awkwardness, timidity, and inexperience of either of the parties; he will cautiously balance the various points of evidence, and will persevere in his examinations, when necessary, till he has disentangled the case before him from all doubt and uncertainty.

9. A benevolent magistrate will never forget that mercy is the brightest ornament of all power; he will never suffer any cruelty, threat, or wanton insult to be committed on persons under accusation to extort confessions, or on any other pretence whatsoever; he will never exact bail beyond the means of the parties; he will himself inspect all places of temporary or permanent confinement; and he will carefully prevent violations of humanity in the various subaltern agents of his jurisdiction.

10. A public-spirited magistrate will always be easy of access on special occasions which demand his interposition, and he will be punctual in his attendance at those known periods which he sets apart for the administration of justice.

11. In hearing charges brought before him, a magistrate should remember the dependence of the parties on his patient attention; his examination should be public, but in most cases the witnesses ought not to be heard in each others presence; he should be jealous of the influence of rewards and penalties on the evidence of the informers; he should warily guard himself against the malignant feelings or sinister designs of accusers; and before he commits or convicts, he should be thoroughly satisfied that the act charged was perpetrated with a criminal intention, and contrary to the true intent of some statute law, or ordinance of the realm

12. In all adjudications relative to the poor, an upright magistrate should be the poor man's friend, and the guardian of the destitute and helpless, against the sordid calculations of avarice, and the overbearing spirit of wealth; accurately discriminating between the impositions of idleness and vice, and the claims of industry and virtue.

13. He ought to be sensible that the letter of the laws is the rule of conduct for subjects as well as magistrates, and that no man is amenable to magisterial authority who has not offended against the ordinary and obvious interpretation of some law, and who has not been convicted on the oaths of credible witnesses, either by the recorded adjudication of a justice of the peace, or by the solemn verdict of a jury of his country.

14. In committing to prison the magistrate should carefully distinguish whether the object is correction after conviction, or simple detention before trial, and should direct his warrant accordingly: no man being liable to be sent to a correctional prison, or subject to a correctional discipline, except as a punishment after a recorded conviction; and simple detention ought to take place in the sheriff's gaol only, because the sheriff is an honourable officer, bound by the ancient laws of the land to perform the important duty of making returns to all sessions of gaol delivery.

15. In imposing penalties, where the statute has given a discretion to the magistrate, he ought to be governed in his decision as well by the means of the parties, as by the repetition or turpitude of the offence, because a mulct implies but a portion of an offender's means, and it is with a view to various shades of culpability that the law has empowered the magistrate to exercise an equitable discretion.

16. In assigning punishments, it should be considered that the penalties of the law always contemplate extreme cases of turpitude, generally leaving it to the magistrate to mitigate and apportion the punishment according to the circumstances of every offence; in doing which, it should be remembered that the scripture enjoins us "to forgive our brother seventy times seven times;" that the penalties of the law ought never to be passionate or vindictive, but to be simply cautionary for first or trivial offences, gently corrective for second offences, and exemplary and severe only when applied to incorrigible culprits, or to very heinous crimes.

17. Every justice of the peace who is anxious to preserve the honour of the laws, will never discourage appeals against his own convictions, or in any way obstruct or influence the decision of such appeals; and as often as the letter or spirit of the law appears to him to have borne with undue severity on individuals, or families, he will benevolently ascertain the extenuating circumstances of the case, and bring them in due form before the bench in sessions, or before the grand jury at the assizes, in order that the suffering party may, through their recommendation to the proper authority, obtain the royal pardon.

18. A discreet magistrate will, on all occasions, avoid mixing in decisions that involve his personal interests, his family connexions, his friendships, or his known or latent enmities. In all such cases, he ought magnanimously to retire from the bench at sessions, or to call one or more of the neighbouring magistrates into his jurisdiction. He should remember that his character will be in a state of hazard whenever his predilections as a private man, a politician, or a theologian, interfere with the independence of his judgments as a magistrate.

19. A paternal magistrate will do more good in his neighbourhood by his advice and example, than by the force of authority and coercion. He should lend his countenance to the virtuous, and his protection to the unfortunate; but, above all, he should set a good example in his own conduct, and exact it from all in authority beneath him; because he can never punish with effect any vices which he practises himself, or tolerates in his agents; and their combined example will prove more powerful than all the instruments of judicial terror.

20. A justice of the peace, holding a commission from a constitutional King of England, and his authority under the mild laws of England, will always feel that his power is conferred for the purpose of increasing the happiness of all who are subject to his cognizance, and within his jurisdiction, that he is the guardian of the public morals, a conservator of the peace, and protector of the public and personal rights of the people; and that it much depends on the wisdom and prudence of justices of the peace, whether the social compact which binds the people into one nation, under one ruler, and one code of laws, serve as a curse or a blessing.

Counting-House Calendar, for 1833.

Saturday.....	Friday.....	Thursday.....	Wednesday.....	Tuesday.....	Monday.....	Sunday.....	Saturday.....	Friday.....	Thursday.....	Wednesday.....	Tuesday.....	Monday.....	Sunday.....
JAN. 1 2 3 4 5 6 7 8 9 10 11 12 13 14 15 16 17 18 19 20 21 22 23 24 25 26 27 28 29 30 31	JULY.... 1 2 3 4 5 6 7 8 9 10 11 12 13 14 15 16 17 18 19 20 21 22 23 24 25 26 27 28 29 30 31	FEB. 1 2 3 4 5 6 7 8 9 10 11 12 13 14 15 16 17 18 19 20 21 22 23 24 25 26 27 28	AUG. 1 2 3 4 5 6 7 8 9 10 11 12 13 14 15 16 17 18 19 20 21 22 23 24 25 26 27 28 29 30 31	MARCH..... 1 2 3 4 5 6 7 8 9 10 11 12 13 14 15 16 17 18 19 20 21 22 23 24 25 26 27 28 29 30 31	SEPT... 1 2 3 4 5 6 7 8 9 10 11 12 13 14 15 16 17 18 19 20 21 22 23 24 25 26 27 28 29 30	APRIL.... 1 2 3 4 5 6 7 8 9 10 11 12 13 14 15 16 17 18 19 20 21 22 23 24 25 26 27 28 29 30	OCT..... 1 2 3 4 5 6 7 8 9 10 11 12 13 14 15 16 17 18 19 20 21 22 23 24 25 26 27 28 29 30 31	MAY. 1 2 3 4 5 6 7 8 9 10 11 12 13 14 15 16 17 18 19 20 21 22 23 24 25 26 27 28 29 30 31	NOV..... 1 2 3 4 5 6 7 8 9 10 11 12 13 14 15 16 17 18 19 20 21 22 23 24 25 26 27 28 29 30	JUNE. 1 2 3 4 5 6 7 8 9 10 11 12 13 14 15 16 17 18 19 20 21 22 23 24 25 26 27 28 29 30	DEC... 1 2 3 4 5 6 7 8 9 10 11 12 13 14 15 16 17 18 19 20 21 22 23 24 25 26 27 28 29 30 31		

Signs of the Zodiac.

♈ Aries—head.	♎ Libra—reins.
♉ Taurus—neck.	♏ Scorpio—secrets.
♊ Gemini—arms.	♐ Sagittarius—knees.
♌ Cancer—breast.	♑ Capricornus—knees.
♍ Leo—heart.	♒ Aquarius—legs.
♎ Virgo—belly.	♓ Pisces—feet.

The Planets and their relations.

☉ The Sun	♀ Venus.	♃ Jupiter.
☾ The Moon.	♁ The Earth.	♄ Saturn.
☿ Mercury.	♂ Mars.	♁ Georgian.

- ♋ A Planet's ascending node.
- ♌ The descending node.
- ♍ Conjunction, or Planets situated in the same longitude.
- ♎ Quadrature, or Planets situated in longitudes differing 3 signs from each other.
- ♏ Opposition, or Planets situated in opposite longitudes, or differing 6 signs from each other.

Chronological Cycles for 1833.

Dominical Letter.....F.	Roman Indiction	6	
Golden Number.....10	Julian Period.....	6546	
Epact	9	Dionysian Period.....162	
Cycle of the Sun	22	Number of Direction	17

Ember Days.

Febry. 27th, and March 1st & 2d	September 18th, 20th & 21st.
May 29th & 31st, and June 1st	December 18th, 20th & 21st

Moveable Feasts.

Septuagesima Sunday, .. Feb 3	Low Sun.....	April 14	
Quinq. or Shrove Sun.... Feb 17	Rogation Sun.....	May 12	
Ash Wed. or 1st day Lent, Feb 20	Asc. Day, or Holy Th. May 16		
Mid-Lent Sun..... March 17	Whit Sun. or Pentecost, May 26		
Palm Sun	March 31	Trinity Sun.	June 2
EASTER DAY.....	April 7	Advent Sun.	Dec. 1
For other remarkable days and Sundays, see calendar pages.			

Holidays at the Public Offices.

New-Year's Day.....	Jan 1	Whit Tuesday.....	May 28
St Patrick.....	March 17	King William's b. d. kept, May 28	
Good Friday.....	April 5	Queen Adelaide's b. d.	Aug. 18
Easter Monday.....	April 8	Powder Plot	Nov 5
Easter Tuesday.....	April 9	St Andrew	Nov 30
St George.....	April 23	Christmas Day.....	Dec 26
Whit Monday.....	May 27

ECLIPSES.

In times of ignorance men were alarmed at all celestial phenomena, the recurrence of which takes place at periods too remote to be readily calculated, and which accordingly appear to be guided by no fixed laws; whilst more important and obvious appearances excite no surprise because they are frequent, and because they occur at well known periods: thus the changes of the moon are observed without alarm, while the less obvious occurrence of an eclipse has scattered dismay over an army or a nation. An incidental and considerable assistance has been derived to chronology from this superstitious feeling. Eclipses were thought to be connected, in some secret manner, with the destinies of nations, and their occurrence has been carefully recorded, when near the time of some great battle, or other political event, of whose epoch we should otherwise remain in ignorance. Astronomical science shows how to determine with the greatest exactness the hour of any given eclipse; and we are thus enabled to fix with precision the date of any event which may have been thus accompanied, to confirm the statement of an historian, or to correct his errors. But as the computation of eclipses is attended with considerable difficulty, a few only of the readers of history are able to carry on these researches for themselves. On this account catalogues of eclipses have been calculated by astronomers for many thousand years, by a reference to which any chronological point connected with these phenomena may be at once determined.

Eclipses take place every half year, and at each period there may be one, two, or three eclipses; if only one, it must be an eclipse of the sun; if two, there will be one of each luminary; and if three, there will be two of the sun, with one of the moon between them. Eclipses of the Sun are caused by the interposition of the body of the moon between our eyes and the Sun, and eclipses of the moon by a real deprivation of light from the moon, occasioned by the shadow of the earth.

There will be five eclipses this year, two of the Sun, and three of the Moon, as follows, viz—

I. The first will be of the Moon, on Saturday, January 6th, partial and visible:—

Beginning.....	2h. 28m.)	} time in the morning.
Ecliptic 8.....	3 31	
Middle.....	3 39	
End.....	4 49	

Digits eclipsed 5° 43' on the Moon's north limb, in the southern section of the earth's shadow.

II. The second will be of the Sun, on Monday, Jan'y 20th, at about 5½ o'clock P. M. invisible in this Province, as well by reason of the Moon's south latitude, as from the time it happens; but in the Southern Frozen Ocean, in Lat. 61° 42' 30" south, and Long. 143° 58' 30" east of London, it will be visible,

s.
ees.
nees.

longitude.
differing 3

gitudes, or

.....6
.....6546
.....162
..... 17

h & 21st.
h & 21st

...April 14
...May 12
Th. May 16
st, May 26
... June 2
... Dec. 1
dar pages.

... May 28
ept, May 28
l. ... Aug. 18
... Nov 5
... Nov 30
... Dec 26
.....

central, and annular on the meridian. It will also be visible and very great at the southern extremity of the Islands of Holland, Van Dieman's Land, and New Zealand. This will be a very singular and remarkable eclipse, the Moon's south umbra will not reach the earth, and the penumbra crossing the southern part of it, will eclipse partially and visibly nearly the whole of the south frigid zone; the southern extremity of the penumbra passing by in expansum a few leagues from the pole. In Long. 36° W. of London, in this zone, the eclipse will assume a curious and unusual appearance; progressing after the commencement with the utmost rapidity, and attaining in a very short time, the magnitude of 7 or 8 digits; it will then pass off with equal velocity, the motion of places in this longitude, and the motion of the penumbra being in opposite directions. The eclipse at all these places, will begin on the Sun's eastern limb, and end on his western; a phenomenon that never takes place in the torrid or temperate zones.

III. The third will be of the Moon, on Monday, July 1st. partial and partly visible: the going off of the earth's shadow may be perceived at the moon's rising.

Beginning.....	6h.47m.	} Apparent, or solar time in the morning.
S's upper limb rises with 9 } digits eclipsed.....	7 33	
Lower limb rises.....	7 36	
Ecliptic opposition... ..	8 19	
Middle.....	8 55	
End.....	10 13	

Digits eclipsed $10^{\circ} 18'$ on the moon's southern limb in the north side of the earth's shadow.

IV. The 4th will be of the Sun, on Wednesday, July 17th at about $2\frac{1}{2}$ o'clock in the morning; a grand and total eclipse; but on account of the moon's high latitude, and as the sun will then be below the horizon, it will not be visible in the provinces, but in the northern part of Europe and Asia, it will be visible, central, and total. The moon's shadow will first strike the earth at sunrise in Hudson's Bay, or Davis' Strait, near the island of Disco; thence, travelling eastward, at the rate of about 30 miles a minute, over the southern part of Greenland and Iceland into the Atlantic Ocean; and crossing the Atlantic Ocean; the Skotland and Ferro Islands, and the northern part of Great Britain; it will enter Norway and Sweden; traversing there, the Gulf of Bothnia, Finland, and the Southern part of Lapland, the White Sea, Russia in Europe, and the southern part of Nova-Zembla, and passing the Ural mountains into Siberia, as far as the Gulf and river Obi, it will leave the earth near the city of Tobolsk at the setting of the sun. At London, a few minutes before 6 o'clock in the morning, about 9 digits will be eclipsed; and at Paris, a few minutes after 6, about 8 digits will be eclipsed. The northern part of the penumbra will extend beyond the North pole, eclipsing nearly the whole of the north frigid zone,

very similar to the southern in the eclipse of Jan. 20th, except that the eclipse will be smaller in the northern, than in the southern frigid zone.

V. The fifth and last, will be of the moon, on Thursday, Dec. 26th—total and partly visible; the moon will pass through the centre of the earth's umbra; she will be almost wholly immersed at her rising; and as the daylight departs she may be seen in the north-east wading through the sullied gloom, with the sombre veil of the earth's shadow spread over her dusky and disconsolate face. Near by, or a little south and above her, will be the Bull's eye, Aldabaran, who will direct where to look for the Moon in this hour of darkness.

The eclipse begins.....	3h. 28m.	} apparent solar time in the Evening.
☾ rises nearly totally eclipsed.....	4 19	
Beginning of total darkness.....	4 28	
Ecliptic opposition.....	5 16	
Middle of the eclipse.....	5 17	
End of total darkness.....	6 6	
End of the eclipse.....	7 6	

Digits eclipsed 20° 7' 15" including a little to the southern side of the earth's shadow.

Occidental and Oriental Stars.

The Planet Venus (♀) will be *evening* star, till Holy Thursday, (May 16th,) thence *morning* star through the year.

Jupiter (♃) also will be *evening* star till April 1st (all Fool's Day) thence *morning* star till St. Crispin's (Oct. 25th) and then again *evening* star.

Mars (♂) likewise will be *evening* star till All Saint's Day. (Nov. 1st.)—the remainder of the year he will be *morning* star.

Explanation of the Calendar Pages.

LEFT HAND PAGE.—*First column* contains the days of the month. *Second*, Days of the Week. *Third*, Rising of the Sun. *Fourth*, Setting of the Sun. *Fifth*, length of days in hours and minutes. *Sixth*, Sun's declination in hours and minutes. *Seventh*, Moon's Rising or Setting. *Eighth*, Moon's Southing:—this column also gives the time of High Water at Widdow, Parrshero', Horton, Cornwallis, &c. *Ninth*, Moon's place in the Signs. *Tenth*, High Water at Halifax.

RIGHT HAND PAGE.—*First column*, contains the days of the month. *Second*, Baromys, Weather, &c. *Third*, Farmer's Calendar.

The top of the columns on each page shows the Moon's phase, the times of new and full moon, and of the first and last quadratures with the sun.

All astronomical relations are in apparent or solar time. The Sun's declination, is taken from the Nautical Almanack.



Full ☉ 6th d. 3h. 31m. morn. | Last ☽ 12th d. 7h. 13m eve.

D	D	☉	☉	Days	Sun's	☽ R.	☽	☽'s	High
M	W	rises	sets	len'th	dec. S	& S.	south.	place.	water.
1	Te	7 40	4 20	8 40	23	0	1 56	8 2	3 17
2	W	7 39	4 21	8 42	22	55	3 7	8 53	4 28
3	Th	7 39	4 21	8 42	22	49	4 18	9 49	5 31
4	Fr	7 38	4 22	8 44	22	43	5 30	10 48	6 23
5	Sa	7 38	4 22	8 44	22	36	6 39	11 51	7 11
6	F	7 37	4 23	8 46	22	29	rises.	morn.	7 53
7	M	7 37	4 23	8 46	22	22	8 18	0 53	8 33
8	Te	7 36	4 24	8 48	22	14	7 35	1 56	9 14
9	W	7 35	4 25	8 50	22	6	8 53	2 55	9 54
10	Th	7 34	4 26	8 52	21	57	10 8	3 49	10 40
11	Fr	7 33	4 27	8 54	21	48	11 17	4 41	11 48
12	Sa	7 33	4 27	8 54	21	38	morn.	5 30	morn.
13	F	7 32	4 28	8 56	21	28	0 25	6 16	0 30
14	M	7 31	4 29	8 58	21	17	1 32	7 3	1 43
15	Te	7 30	4 30	9 0	21	6	2 37	7 49	2 57
16	W	7 29	4 31	9 2	20	55	3 38	8 36	4 2
17	Th	7 28	4 32	9 4	20	43	4 38	9 24	4 56
18	Fr	7 27	4 33	9 6	20	31	5 35	10 13	5 41
19	Sa	7 26	4 34	9 8	20	19	6 23	11 0	6 21
20	F	7 25	4 35	9 10	20	6	sets	11 49	7 0
21	M	7 24	4 36	9 12	19	53	5 26	aft. 34	7 35
22	Te	7 25	4 37	9 14	19	39	6 26	1 22	8 11
23	W	7 22	4 38	9 16	19	25	7 27	2 7	8 46
24	Th	7 21	4 39	9 18	19	11	8 28	2 50	9 19
25	Fr	7 20	4 40	9 20	18	56	9 30	3 33	9 52
26	Sa	7 19	4 41	9 22	18	41	10 31	4 16	10 27
27	F	7 17	4 43	9 26	18	26	11 34	4 59	11 5
28	M	7 16	4 44	9 28	18	10	morn.	5 44	11 49
29	Te	7 14	4 46	9 32	17	54	0 38	6 32	aft. 53
30	W	7 13	4 47	9 34	17	38	1 48	7 24	2 17
31	Th	7 12	4 48	9 36	17	21	2 57	7 20	3 49



13m eve.

3	17
4	28
5	31
6	23
7	11
7	53
8	33
9	14
9	54
10	40
11	48
morn.	
0	30
1	43
2	57
4	2
1	56
5	41
6	21
7	0
7	35
8	11
8	46
9	19
9	52
10	27
11	5
11	49
aft. 53	
2	17
3	49

Winter. JANUARY begins on Tuesday.

The wind howls loud, the snow is on the ground,
 The icy river has forgot to flow ;
 On leafless boughs no shelter can be found
 Where the poor starving feathered race can go.
 The timid robin to the window flies,
 And begs some crumbs to save him from death's doom,
 As round the fire the happy circle hies
 To dissipate with mirth drear winter's gloom :
 'Tis then we feel the blest delights of home,
 And for the friendless wanderer shed a tear,
 Who's doom'd unsheltered through this world to roam,
 Devoid of even hope his days to cheer :
 How ought our thanks great God ! ascend to thee,
 Who from such earthly misery keeps us free.

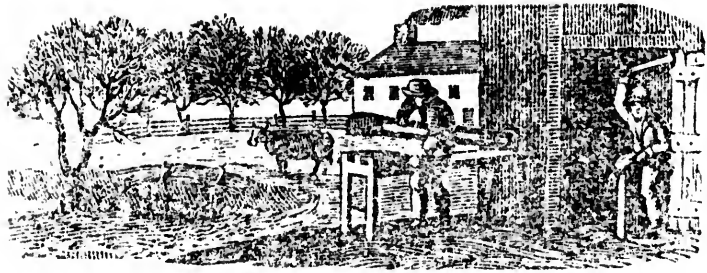
New ☉, 20th d. 5h 38m eve | First ☽, 28th d. 5h 10m eve.

DM | Holicays, weather, &c.

FARMER'S CALENDAR.

1 Circumcision. ☉ ☽ & ♄.
 2 ☉ ☽ & 7**s*.
 3 *Signs of*
 4 ♀ stat. *snow*.
 5 ☉ runs high.
 F Epiphany. very high tides.
 7 ♀ stat. [☉ eclip. vis.
 8 Lucian. *changes*.
 9 *more uncomfortable*.
 10 ☉ ☾ & ♀.
 11 Linnæus died, 1778.
 12 Lavater died, 1801.
 F 1st Sun. aft. Epiphany. Low
 14 Halley d. 1742. [tides.
 15 ♀ gr. elong. *appearance*
 16 Bat. Corunna, 1809. *of*
 17 Franklin b. 1706.
 18 Prisca. ☉ ☽ & ♄. *rain*.
 19 ☺ enters ♍. Com. tides
 F 2nd. aft. Ephny. ☺ eclips. invis
 21 rather high tides. ☉ ⊕ ♀ ♃.
 22 [☉ apogee.
 23 Wm Pitt died 1806.
 24 ☉ ☽ ♃ & ♀. *great*
 25 St Paul converted. *signs*.
 26 Dr Jenner died, 1823.
 F 3rd Sun. aft. Epiphany. Duke
 28 Low tides. [Sussex b. 1773.
 29 *of a snow storm*.
 30 ☉ ☽ & 7**s*. K. Chas I. mar-
 31 Ben Johnson, b. 1574. [tyr.

The great bulk of mankind must always get their living by cultivating the soil. The character of farmers, therefore, settles the character of the community in general.—The profits of farming are slow, but sure. The good farmer grows rich simply by the increased value which he every year gives to his farm.—His buildings and fences are yearly growing better, his cattle growing better, his tools growing better. His debts are also growing less, and his business more easy of management; so that by the time of life in which care becomes burdensome, he generally finds himself in a situation to travel the down hill of life with a good degree of comfort.—The poor farmer on the other hand, is the reverse of all this. His affairs, so far as they depend on his management, grow worse and worse. His fixtures decay and are patched up so as to do for



Phil O. 11th d. 2h 18m eve. Last G, 11th d. 9h 0m morn.

D	D	☉	☉	Days'	Sun's	D	R.	D	D's	High	
M	W	rises	sets	length	dec. S	&	S.	south.	place.	Water	
1	Fr	7	11 4	49	9 38	17	4 4	7 9	20	□	5 5
2	Sa	7	9 1	51	9 42	16	4 7	12 10	23	☉	6 6
3	F	7	8 1	52	9 44	16	4 6	22 11	26	☉	5 5 1
4	M	7	7 4	53	9 46	16	4 4	rises	morn.	☉	7 36
5	Th	7	6 1	54	9 48	15	5 6	19 0	28	☉	8 15
6	W	7	5 4	55	9 50	15	5 7	28 1	27	☉	8 52
7	Th	7	3 4	57	9 54	15	6 8	51 2	23	☉	9 29
8	Fr	7	2 4	58	9 55	14	5 7	40 6	14	☉	10 10
9	Sa	7	1 1	59	9 58	11	3 8	11 13	4 5	☉	10 55
10	S	6	19 5	1 10	2 11	19	morn.	4 53		☉	11 46
11	M	6	58 5	2 10	4 13	59	0	23 5	41	☉	morn.
12	Th	6	57 5	3 10	6 13	39	1	26 6	28	☉	0 19
13	W	6	55 5	5 10	10 13	19	2	28 7	17	☉	2 6
14	Th	6	51 5	6 10	12 12	59	3	26 8	6	☉	3 21
15	Fr	6	52 5	8 10	16 12	38	4	19 8	55	☉	1 23
16	Sa	6	51 5	9 10	18 12	18	5	7 9	42	☉	5 13
17	F	6	49 5	11 10	22 11	37	5	4 10	31	☉	5 57
18	M	6	48 5	12 10	24 11	35	6	22 11	17	☉	6 35
19	Th	6	46 5	14 10	28 11	14	sets.	aft.	3	☉	7 11
20	W	6	45 5	15 10	30 10	53	6	19 0	47	☉	7 45
21	Th	6	43 5	17 10	31 10	31	7	20 1	30	☉	8 28
22	Fr	6	42 5	18 10	29 10	9	8	23 2	14	☉	8 59
23	Sa	6	40 5	20 10	40 9	47	9	26 2	27	☉	9 23
24	F	6	39 5	21 10	42 9	25	10	31 3	41	☉	9 51
25	M	6	37 5	23 10	44 9	3	11	32 1	27	☉	10 33
26	Th	6	36 5	24 10	48 8	41	morn.	5 17		☉	11 20
27	W	6	34 5	26 10	52 8	18	0	44 6	10	☉	aft. 29
28	Th	6	32 5	28 10	58 7	55	1	52 7	7	☉	1 59



There, far as the remotest line
 That bounds imagination's flight,
 Countless and unending orbs,
 In mazy motion intermingled,
 Yet still fulfil immutably
 "The Great Creator's" law.
 Above, below, around,
 The circling systems formed
 A wilderness of harmony:
 Each with undeviating care,
 In eloquent silence through the depths of space,
 Pursued its wond'rous way.

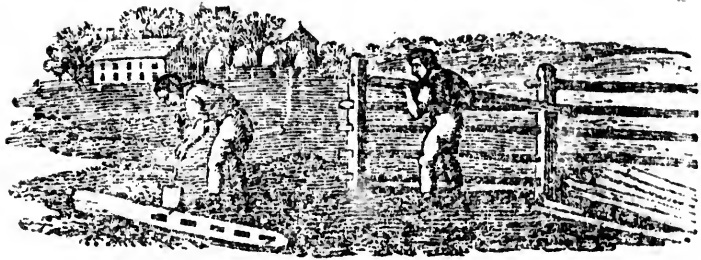
New ☉, 19th d. 0h. 56m eve. | First ☽, 27th d. 8h 59m. morn.
 DM | Holidays, Weather, &c | FARMER'S CALENDAR.

High	Water
5	5
6	6
5	51
7	26
3	15
3	52
1	29
10	10
10	55
11	48
morn	
0	19
2	6
3	21
1	23
5	13
5	57
6	35
7	11
7	45
8	28
8	59
9	23
9	53
10	33
11	20
af. 29	
1	59

1	<i>Pleasant for</i>	
2	Candlemas, or Pur. B. V. Mary	the present; his soil is im-
3	Septuages. Sun. A remarkable	poverished; his debts in-
4	Oper. [conjunc. of the planets	crease; his cares and per-
5	High tides [Venus & Jupiter at	plexities multiply; and he
6	[10. 30m. morn.	finds himself, when old age
7	♄ ○ & ♃.	unfits him for the burden.
8	<i>season.</i>	obliged to mortgage, or sell
9	Maskelyne d. 1811. <i>sudden</i>	his farm, and to live on the
10	Sexagesima Sun. <i>changes.</i>	pittance which his property
11	Low tides. <i>A driving</i>	has gained in value by the
12	<i>storm of snow,</i>	rise of prices around him.
13	Rev. in England, 1688.	The greatest calamity to a
14	Valentine's Day. Insurrection	farmer is a heavy debt. A
15	⊕ runs low. [in Paris, 1831	fire is nothing to it, because
16	<i>or rain may be expected.</i>	the flames do not exact in-
17	Quinq. Sun. ⊕ apogee	terest. The eye of a master
18	♄ ⊕ ♀ & ♃.	does more work than both
19	Shrove Tues. ☉ enters ♋	his hands; but it must be an
20	Ash Wed. 1st day of Lent.	eye wide awake. There is
21	High tides. ♄ ☽ & ♃	a difference between eyes
22	♄ ♃ & ♀	and no eyes. To save ex-
23	<i>Becomes</i>	pense and labour is ready
24	<i>much finer.</i>	money in all business; but
25	1st Sun. in Lent. St. Matthias.	in farming it is ready money
26	[Dk. Camb. b. 1774	with interest, because it
27	♄ ☽ 7 *'s. <i>appearance</i>	saves time, which is more
28	Low tides. <i>of a</i>	valuable than money.
	<i>snow storm.</i>	

MARCH, 31 days.

III Month



Phil O. 4th d. 0h. 32m. morn. | Last C, 13th d. 1h. 33 m. morn.

D	D	☉	☉	Days	San's	D R	D	D's	High							
M	W	rises	sets	len'th	lec. S	& S.	south.	place.	water							
1	Fr	5	30	5	30	11	0	7	32	2	57	8	6	☉	3	29
2	Sa	5	21	5	31	11	2	7	10	3	58	9	7	☉	4	31
3	F	6	2	5	33	11	6	6	47	1	57	10	10	☉	5	35
4	M	6	25	5	35	11	10	6	24	5	39	11	10	☉	6	42
5	T	6	21	5	36	11	12	5	16	19	morn.			☉	7	19
6	W	5	22	5	38	11	16	5	3	rises	0	6		☉	7	53
7	Th	5	21	5	39	11	18	5	14	7	42	1	2	☉	8	31
8	Fr	5	19	5	41	11	22	4	51	3	57	1	54	☉	9	7
9	Sa	5	18	5	42	11	24	4	27	10	11	2	46	☉	9	48
10	F	5	16	5	44	11	28	4	4	11	18	3	36	☉	10	32
11	M	5	15	5	45	11	30	3	46	morn.	1	25		☉	11	29
12	Tu	5	13	5	47	11	34	3	17	0	23	5	15	☉	morn.	
13	W	5	12	5	48	11	38	2	53	1	23	6	5	☉	0	19
14	Th	5	10	5	50	11	40	2	30	2	18	6	55	☉	1	32
15	Fr	5	9	5	51	11	42	2	6	3	8	7	41	☉	2	47
16	Sa	5	7	5	53	11	43	1	42	3	51	3	32	☉	3	35
17	F	5	5	5	55	11	50	1	19	1	31	0	20	☉	4	50
18	M	5	4	5	56	11	52	0	55	5	3	10	6	☉	5	31
19	Tu	5	2	5	58	11	56	0	21	5	31	10	56	☉	6	13
20	W	5	0	6	0	12	0	0	7	5	58	11	34	☉	6	50
21	Th	5	59	6	1	12	2	s	15	sets	aft.	19		☉	7	25
22	Fr	5	57	6	3	12	6	0	29	7	26	1	2	☉	7	57
23	Sa	5	56	6	4	12	8	1	38	8	29	1	4	☉	8	29
24	F	5	54	6	6	11	12	1	96	0	27	2	32	☉	9	3
25	M	5	53	6	7	12	14	1	50	10	46	3	22	☉	9	40
26	Tu	5	51	6	9	12	16	2	13	11	51	1	13	☉	10	20
27	W	5	50	6	10	12	18	2	27	morn.	5	7		☉	1	17
28	Th	5	48	6	12	13	20	2	60	0	56	1	5	☉	aft	11
29	Fr	5	45	6	14	13	22	2	21	1	57	7	4	☉	1	43
30	Sa	5	45	6	15	13	24	2	49	2	58	8	3	☉	3	24
31	F	5	43	6	17	13	31	1	19	3	41	9	2	☉	1	41

Spring. MARCH begins on Friday.

— there is health in the clear cold breeze,
 And a sound of joy in the leafless trees;
 And the sun is pale, yet his pleasant gleam
 Has wakened the earth, and unchain'd the stream;
 And the soft west wind, oh! it gently blows!
 Hasten to follow, pale lady primrose!
 And hyacinth graceful, and crocus gay,
 For we have not met this many-a-day.
 Follow us, follow us! follow us then,
 All ye whose home is in grove or glen:
 Why do ye linger? Who else is coming,
 Now spring is awak'd with the wild bee's humming?

New ☉ 21st d. 6h 46m. morn. | First ☽ 28th d. 6h. 24m. eve.

DM	Holidays, Weather &c.	FARMER'S CALENDAR
1	☾ runs high. St David.	Take opportunity before
2	♂ ☉ & ♀ John Wesley, d 1791	the hurrying season comes on
F	2nd Sun. in Lent.	to select and purchase such
4	○ Perigee cooler	neat cattle, sheep, pigs, seed
5	Voltaire died 1897. with	wheat, potatoes for planting,
6	Very high tides. ♀ gr. elon.	&c. as will likely to prove
7	high winds.	most valuable on a farm, hav-
8		ing in mind the following
9	driving	maxim, viz: Choose those ani-
F	3rd Sun. in Lent. snow	mals and vegetables to re-
11	♀ perihelium. storm.	pagate from, which possess the
12		qualities that you wish might
13	Low tides. becomes finer.	distinguish their offspring in
14	☾ runs low.	the greatest perfection.---
15	♂ ☉ h. changes to	Farmers are too apt to sell off
16	♂ ☽ & ♀. cloudy and	their best stock to the but-
F	Mid. Lent Sun. 4th in Lent.	chers and keep the poorest
18	☾ apo. ♂ ☽ & ♀ [St Patrick.	to breed from; and to gather
19	Spring begins. dull weather.	their seeds from vegetables
20	Sun crosses the line at 3h. 2m	which were permitted to
21	High tides [P.M. ☾ enters ♀.	run to seed merely because
22	♂ ☾ & ♀. a storm.	they were worth but little
23	Austrians invaded Italy, 1831.	for consumption. Grain or
F	5th Sun. in Lent. now	roots for fattening neat stock
25	Lady Day. Annun. B.V. Mary.	or swine will go about
26	we may	one third further if steam-
27	♂ ☽ & ♀. expect a	ed or boiled, than if used
28	spell of fine	raw; and when it is wish-
29	Low tides. weather.	ed to cook food for cattle or
30	appearance of rain.	swine in small quantities, it
F	6th Sun. in Lent. Palm. Sun.	may be done at little or no ex-
		pense in the evenings over
		the kitchen fire.

m. morn.	High water
3	29
4	51
5	55
6	42
7	19
7	53
8	31
9	7
9	48
10	32
11	29
morn.	
0	19
1	22
2	47
3	55
4	50
5	31
6	13
6	50
7	25
7	57
8	29
9	3
9	40
10	20
1	17
aft 11	
1	43
3	24
4	41



Full O, 4th d. 10h. 26m. morn. Last C, 11th d. 7h. 53m. eve.

D	D	☺	☺	days	Sun's	C R.	D	D's	High
M	W	rises	sets	len'th	dec. N	& S.	south	place	water
1	M	5 42	6 18	12 36	4 33	4 22	9 59	☉	5 43
2	Tu	5 40	6 20	12 40	4 58	4 58	10 54	☽	6 29
3	W	5 38	6 22	12 41	5 19	5 29	11 47	☽	7 7
4	Th	5 37	6 23	12 46	5 42	rises.	morn.	☽	7 42
5	Fr	5 35	6 25	12 50	6 57	52	0 39	☽	8 17
6	Sa	5 34	6 26	12 52	6 28	9 41	30	☽	8 52
7	F	5 32	6 28	12 56	6 50	10 12	22	☽	9 28
8	M	5 31	6 29	12 58	7 13	11 19	3 12	☽	10 13
9	Tu	5 29	6 31	13 2	7 35	morn.	4 4	☽	11 3
10	W	5 28	6 32	13 4	7 57	0 18	4 55	☽	11 55
11	Th	5 26	6 34	13 8	8 19	1 11	5 46	☽	morn.
12	Fr	5 25	6 35	13 10	8 41	1 59	6 35	☽	1 2
13	Sa	5 23	6 37	13 14	9 3	2 38	7 22	☽	2 13
14	F	5 22	6 38	13 16	9 25	3 13	8 9	☽	3 24
15	M	5 20	6 40	13 20	9 46	3 43	8 54	☽	4 18
16	Tu	5 19	6 41	13 22	10 8	4 9	9 38	☽	5 10
17	W	5 17	6 43	13 26	10 29	4 36	10 23	☽	5 50
18	Th	5 16	6 44	13 28	10 50	4 59	11 6	☽	6 27
19	Fr	5 15	6 45	13 30	11 11	sets.	11 50	☽	7 6
20	Sa	5 13	6 47	13 34	11 31	7 35	aft. 36	☽	7 38
21	F	5 12	6 48	13 36	11 52	8 43	1 25	☽	8 11
22	M	5 10	6 50	13 40	12 12	9 51	2 16	☽	8 49
23	Tu	5 9	6 51	13 42	12 32	10 58	3 10	☽	9 29
24	W	5 7	6 53	13 46	12 52	morn.	4 7	☽	10 13
25	Th	5 6	6 54	13 48	13 12	0 0	5 6	☽	11 2
26	Fr	5 5	6 55	13 50	13 31	0 58	6 4	☽	aft 7
27	Sa	5 3	6 57	13 54	13 50	1 47	7 2	☽	1 39
28	F	5 2	6 58	13 56	14 9	2 30	7 58	☽	3 16
29	M	5 0	7 0	14 2	14 28	3 4	8 52	☽	4 31
30	Tu	4 59	7 1	14 2	14 47	3 37	9 41	☽	5 27

Month.

Spring. APRIL begins on Monday.

The brightly beaming Spring at length is seen,
 And all things breathe of joy. The infant year
 Hath burst the barriers time and tempest rear ;
 And, clothed in vernal beauty, smiles serene
 The quick-reviving earth. Though long hath been
 The trance of nature on the naked bier,
 Where ruthless Winter mocked her slumbers drear,
 And rent with iron hand her robes of green,
 The spell is sweetly broken ! Glossy trees,
 Resplendent meads, and variegated fowers,
 Gleam in the Sun, and tremble in the breeze !
 And now with dreaming eye the Poet sees
 Fair shapes of pleasure haunt romantic bowers,
 And laughing streamlets chase the flying hours !

1. eve.

High water
 5 43
 6 29
 7 7
 7 42
 8 17
 8 52
 9 28
 10 13
 11 3
 11 55
 morn.
 1 2
 2 13
 3 24
 4 18
 5 10
 5 50
 6 27
 7 6
 7 38
 8 14
 8 49
 9 29
 10 13
 1 2
 ft 7
 39
 16
 31
 27

New ☾, 10th d. 9h. 34m. eve. | First ♀ 27th d. 11h. 19m morn.

10 | Holidays, Weather, &c | FARMER'S CALENDAR.

- 1 ♄ ☉ ♃ per. ♃ perihel.
- 2 ♄ ☾ ♃ ♃. frequent showers.
- 3
- 4 High tides.
- 5 Good Friday. fine
- 6 Rev. in Brazil, 1831. for the season
- 7 Easter Day.
- 8 Easter Monday.
- 9 Easter Tuesday. more rain.
- 10 ☾ runs low.
- 11 Low tides.
- 12 Very low tides. clouds up.
- 13 ☾ ☽ poge. with greet
- 14 Low Sun. 1st aft. Easter.
- 15 Inf ♄ ☽ ☉. ♄ ☾ ☽ ♃.
- 16 Buffon died, 1788. signs
- 17 Franklin died, 1790. of
- 18 Ld. Byron d, 1824, aged 36.
- 19 Alphege. High tides. ♄ ☾ ♃ ♃
- 20 ☉ enters ♄. rain.
- 21 ♄ ☾ ☽ ♃. 2d Sun aft. Easter.
- 22 ♄ in ☽. much
- 23 St George. warme.
- 24 ☾ runs high.
- 25 ♄ stat. Ds. Gloucester. b. 1770.
- 26 David Hume, b. 1717.
- 27 Low tides, changeable
- 28 3rd Sun. aft. Easter. with
- 29 ♃ perigee. occasional
- 30 ♄ ♃ ☽ ♃. showers.

Now is the time to commence operations in the management of the soil ; but let us deliberate before we strike a blow. System in farming is as requisite as in book keeping or any other thing. None of your hetch potch and higgledy-piggledy mode of doing business will answer at all. — Your plans for the whole season should be well laid out and adjusted, in doing which, you should take some account of foul weather as well as fair, contriving that as little time as possible be lost ; for time they say, is money, especially when you have hired men by the month. Let every horse you keep be a good one because he eats no more than a poor hack, and he will do more service, and sell for something if you wish to part with him. Get all your fences in thorough order as early in the month as possible.



Full ☉ 3rd d. 8h. 32m. eve. | Last ☾ . 11th d. 2h 33m. eve.

D	D	☉	☉	Days'	Sun's	☾ R.	☾	☾'s	High
M	W	rises	sets	len'th	decN	& S.	south.	place.	water
1	W	4 58	7 2	14 4	15 5	4 5	10 34	☾	6 10
2	Th	4 56	7 4	14 8	15 23	4 33	11 25	☾	6 52
3	Fr	4 55	7 5	14 10	15 41	rises	morn	☾	7 24
4	Sa	4 54	7 6	14 12	15 58	7 59	0 14	☾	7 59
5	F	4 53	7 7	14 14	16 15	9 7	1 5	☾	8 37
6	M	4 52	7 8	14 16	16 32	10 11	1 57	☾	9 15
7	Tu	4 50	7 10	14 20	16 49	11 6	2 49	☾	9 57
8	W	4 49	7 11	14 22	17 5	11 56	3 40	☾	10 14
9	Th	4 47	7 13	14 26	17 22	morn.	4 31	☾	11 31
10	Fr	4 46	7 14	14 28	17 37	0 42	5 21	☾	morn.
11	Sa	4 45	7 15	14 30	17 53	1 17	6 7	☾	0 24
12	F	4 44	7 16	14 32	18 8	1 49	6 53	☾	1 28
13	M	4 42	7 18	14 36	18 23	2 16	7 37	☾	2 37
14	Tu	4 41	7 19	14 38	18 38	2 42	8 20	☾	3 40
15	W	4 40	7 20	14 40	18 52	3 6	9 4	☾	4 34
16	Th	4 39	7 21	14 42	19 6	3 31	9 47	☾	5 24
17	Fr	4 38	7 22	14 44	19 20	3 55	10 32	☾	6 3
18	Sa	4 37	7 23	14 46	19 33	4 20	11 19	☾	6 41
19	F	4 36	7 24	14 48	19 46	sets	aft 10	☾	7 24
20	M	4 35	7 25	14 50	19 59	8 51	1 8	☾	8 2
21	Tu	4 34	7 26	14 52	20 11	9 55	2 2	☾	8 39
22	W	4 33	7 27	14 54	20 23	10 55	3 1	☾	9 21
23	Th	4 32	7 28	14 56	20 35	11 48	4 0	☾	10 5
24	Fr	4 31	7 29	14 58	20 46	morn.	4 59	☾	10 57
25	Sa	4 30	7 30	15 0	20 57	0 31	5 55	☾	11 59
26	F	4 29	7 31	15 2	21 8	1 10	6 49	☾	aft. 18
27	M	4 28	7 32	15 4	21 18	1 41	7 40	☾	2 45
28	Tu	4 28	7 32	15 4	21 28	2 9	8 30	☾	4 2
29	W	4 27	7 33	15 6	21 37	2 38	9 17	☾	4 57
30	Th	4 26	7 34	15 8	21 46	3 4	10 6	☾	5 33
31	Fr	4 26	7 34	15 8	21 55	3 31	10 56	☾	6 23



Spring. MAY begins on Wednesday.

Now the bright morning star, Day's harbinger,
Comes dancing from the east, and leads with her
The flowery May, who from her green lap throws
The yellow cowslip and the pale primrose.

Hail, bounteous May, that dost inspire
Mirth, and youth, and warm desire ;
Woods and groves are of thy dressing,
Hill and dale doth boast thy blessing.

Thus we salute thee with our early song,
And welcome thee, and wish thee long.

New ●. 19th d. 9h. 14m. morn. First ♀, 26th d. 6h. 16m. morn.

Holidays, Weather, &c		FARMER'S CALENDAR
1	St. Philip and St. James.	Prune fruit trees begin-
2	<i>Quite warm</i>	ning when the buds have
3	High tides. Inv of the Cross.	scarcely began to swell, and
4	<i>with occasional</i>	ending before the expansion
F 4th	Sun. aft. Easter.	of the leaves. It is high time
6	St John, Evan. <i>showers</i>	to clear your barn yard, and
7		manure your fields with its
8	☾ runs low. <i>Fine for</i>	contents. Having laid it where
9		it is to be used, you will please
10	Low tides. <i>planting.</i>	either to spread and plough it
11	☾ apogee. <i>rain may</i>	in as soon after spreading as
F	Rogation Sun. 5th aft. Easter	possible, or cover it with
13	[uncommonly low tides	earth, or some other sub-
14	☐ ☺ ☿. <i>be expected.</i>	stance, which will protect it
15	<i>unsteady</i>	from sun and rain, as well as
16	Asc. Day, or Holy Thursday.	absorb its fertilising gases.
17	Inf. ♂ ♀ & ☉. <i>weather</i>	You may about as well suffer
18	♂ ● & 7* <i>s.</i> <i>for some</i>	your hay-cocks to be bleach-
F	Sun. aft Ascension. Dunstan	ed and washed as your ma-
20	Easter term ends. High tides.	nure heaps, unless there is
21	☺ enters ☐. <i>days</i>	some suitable substance to
22	● runs high Prs. Homburg, b.	coat, underlay, or mix with
23	♂ ☾ & ♀ ♃ stat. <i>quite</i> [1770	the animal and vegetable sub-
24	♃ perigee. Prs. Alexandrina	stances which they contain.--
25	[Victoria born, 1819. <i>fine</i>	Be very particular to spread
F	Whit-Sun. ☿ stat. Low tides	your manure evenly, so that
27	Whit-Monday <i>for the</i>	every portion of your soil
28	Whit-Tues. Kings. b. D. kept.	may have its due share.
29	♀ in her ☿. K. Chas II. re std.	
30	Voltaire, d. 1778 <i>season.</i>	
31		

High water
10
52
21
59
37
15
57
11
31
orn.
21
28
37
40
34
21
3
41
21
2
39
21
57
59
18
45
2
57
33
23

Summer. JUNE begins on Saturday.

Seek he who will in grandeur to be blest,
 Place in proud halls, and splendid courts, his joy;
 For pleasure or for gold his arts employ,
 Whilst all his hours unnumbered cares molest, —
A little field, in native flow'rets drest. —
 A riv'let in soft murmurs gliding by, —
 A bird, whose love-sick note salutes the sky,
 With sweeter magic hush my cares to rest.
 And shadowy woods, and rocks, and tow'ring hills,
 And caves obscure, and nature's free born train

* * *

Each in my mind some gentle thoughts instils;

* * *

Ah, gentle thoughts! soon lost the city cares among.

High
Water.

7 1
7 38
8 15
8 56
9 31
10 11
10 58
11 41
morn.
0 30
1 31
2 37
3 43
4 43
5 33
6 19
7 3
7 46
8 27
9 8
9 59
10 37
11 31
aft. 35
1 53
3 13
4 20
5 13
5 56
6 37

New ☉, 17th d. 6h. 56m. eve. | First ☽ 24th d. 11h. 14m. morn.

1M | Holidays, Weather &c. | FARMER'S CALENDAR.

F	Trinity Sunday.	High tides.	More signs Without industry, economy will be of no avail; and with- of rain out economy, the fruits of in- Cooler industry will soon be wasted.—
5	Duke of Cumb: b. 1771.		and The slothful husbandman ex-
6	Pr. Leopold el. King Belgium.		hibits his own shame to eve-
7	♂ in aphel. ♀ ☉ & ♄.		♀ stary passing traveller. Look-
8	♁ Apogee.		fine for at the buildings, fields, simple-
F	1st Sun. af. Trin.		themerts & animals of the indo-
10	Low Tides		season. lent farmer, every thing is
11	St. Barnabas.	♀ in his ♀	poor and out of order. No-
12			Becomes, thing is in its place, for he
13	♁ ☉ & ♃.		warm, has a place for nothing; but
14	♀ in perihel.		look at the good husbandman.
15		Great signs	He knows how to take hold
F	2d Sun. af. Trin.		of of business. All true and e-
17		a storm,	ven as a barn floor, and net
18	Tides very high.		a weed to be seen! Here are
19	☉ runs high.		very fences straight as an arrow
20	☽ Perigee.		warm, snug and sound, and without
21	☉ centers ☉. Summer Solstice		any shabbiness! such appear-
22	(Ch 16m morn. Summer begins		ances always indicate a good
F	3d Sun. af. Trin.		more state of affairs within doors.
24	St. John Baptist.	Low tides.	You may depend upon it he
25			rain has no morning slings or e-
26	Geo. IV died, & Will. IV acc.		leven o'clock drams. Every
27		unsettled [1830	thing here shows a thriving
28	Will. IV proc. 1830		for habit; a habit of industry, and
29	St. Peter.		some of honesty, of frugality and
F	4th Sun. aft. Trin.		days, of health and cheerfulness.

JULY, 31 days.

VII Month



Fall ☉, 1st d. 8h. 19m. eve. | Last ☾, 9th d. 11h. 53m. eve

D	M	☉	☉	Days'	Sun's	☾ R.	☾	☾'s	High	
M	W	rises	sets	len th	dec. N	& S.	south.	place	water	
1	M	4	20 7	40 15	20 23	7 7	34	morn.	W	7 10
2	Tu	4	20 7	40 15	20 23	8 8	24 0	8	W	7 43
3	W	4	20 7	40 15	20 22	9 9	5 0	58	W	8 30
4	Th	4	21 7	39 15	18 22	9 43	1 46		W	9 6
5	Fr	4	21 7	39 15	18 22	8 48	10 13	2 34	W	9 42
6	Sa	4	22 7	38 15	16 22	10 42	10 39	3 19	W	10 18
7	F	4	22 7	38 15	16 22	11 36	11 3 4	2	W	10 55
8	M	4	23 7	37 15	14 22	11 30	11 28	4 44	W	11 36
9	Tu	4	24 7	36 15	12 22	11 23	11 50	5 27	W	morn.
10	W	4	24 7	36 15	12 22	15	morn.	6 6	W	0 24
11	Th	4	25 7	35 15	10 22	7 0	15 6	53	W	1 27
12	Fr	4	26 7	34 15	8 21	59 0	40 7	39	W	2 42
13	Sa	4	26 7	34 15	8 21	51 1	8 8	29	W	3 59
14	F	4	27 7	33 15	6 21	42 1	46 9	23	W	5 5
15	M	4	28 7	32 15	4 21	33 2	30 10	21	W	6 1
16	Tu	4	28 7	32 15	4 21	23 3	27 11	22	W	6 53
17	W	4	29 7	31 15	2 21	13	sets.	aft, 25	W	7 31
18	Th	4	29 7	30 15	0 21	3 8	56 1	27	W	8 15
19	Fr	4	31 7	29 14	58 20	52 9	35 2	26	W	8 53
20	Sa	4	32 7	28 14	56 20	41 10	3 3	21	W	9 32
21	F	4	33 7	27 14	54 20	29 19	36 4	14	W	10 15
22	M	4	34 7	26 14	52 20	18 11	3 5	4	W	11 1
23	Tu	4	35 7	25 14	50 20	6 11	30 5	52	W	11 59
24	W	4	36 7	24 14	48 19	53 11	59 6	41	W	aft. 66
25	Th	4	37 7	23 14	46 19	40	morn.	7 30	W	2 27
26	Fr	4	38 7	22 14	44 19	27 0	29 8	19	W	3 41
27	Sa	4	39 7	21 14	42 19	14 1	4 9	9	W	4 40
28	F	4	40 7	20 14	40 19	0 1	46 10	0	W	5 31
29	M	4	41 7	19 14	38 18	46 2	34 10	51	W	6 16
30	Tu	4	42 7	18 14	36 18	32 3	24 11	40	W	6 51
31	W	4	43 7	17 14	34 18	17 4	20	morn.	W	7 30

Month



Summer. JULY begins on Monday.

A thunder storm!—the eloquence of heaven,
 When every cloud is from its slumber driven!
 Who hath not paused beneath its hollow groan,
 And felt an omnipresence round him thrown?
 With what a gloom the u-h'ring scene appears!
 The leaves all shiv'ring with expectant fears.
 The waters curling with a fellow dread,
 A veiling fervour round creation spread,
 And, last, the heavy rain's reluctant shower,
 With big drops patt'ring on the tree and bower,
 While wizard shapes the bowing sky deform,—
 All mark the coming of the thunder storm!

New ☉, 17th d. 2h 56m morn | First ☽, 23d d. 5h 20m eve.
 Full ☉, 31st d. 10h 48m morn.

n. eve

High water
7 10
7 43
8 30
9 6
9 42
10 18
10 55
11 36
morn.
0 24
1 27
2 42
3 59
5 5
6 1
6 53
7 34
8 15
8 53
9 32
10 15
11 1
11 59
aft. 66
2 27
3 41
4 40
5 31
6 16
6 54
7 30

BM	Holidays, Weather, &c	FARMER'S CALENDAR.
1	☉ ecl. partly vis. High tides	There are two main points
2	⊕ at its greatest distance	to be particularly attended to
3	☉ runs low. [from ☉]	in mowing, viz. point in & point
4	<i>fine growing</i>	out. It is a sober truth, Mr
5	Surrender of Algiers, 1830	Mower, and no joking matter.
6	☾ apogee. <i>weather</i>	Shame on your chopping and
F	5th Sun. aft. Trinity	gouging! you leave the land
8	<i>very fine</i>	looking like the troughs of
9	Low tides.	the sea, with here a hog's
10	Quite low tides. ☽ ☽ & ♀	back and there a mare's tail.
11	<i>good weather</i>	Now do you suppose this will
12	<i>for</i>	answer? By no means! you
13	<i>haymakers.</i>	might as well pull up the
F	6th Sun. aft. Trinity.	grass with a pair of pinchers.
15	☾ runs high. St. Swithin	Another not quite so clever
16	Tides rise. <i>heavy</i>	a circumstance is, that you
17	High tides, ☉ ecl. vis.	were not on the ground in
18	Very high tides. ☉ per.	good time. I like to see a
19	<i>showers</i>	man wide awake in the morn-
20	Prof. Playfair died, 1819	ing; and as for grog drinking,
F	7th Sun. aft. Trinity.	away with it, it will never do
22	Magdalen. ☉ enters ♋	to wet your whistle too much;
23	Low tides.	you had better be whetting
24	<i>are near.</i>	your scythe. Cut steady, true
25	St. James. Dog days begin.	and even, no banging nor
26	♀ gr. west. elong. ♀ gr. elon	boasting, but move your arms
27	<i>much finer</i>	like the swinging of a door
F	8th Sun. aft. Trin. ☽ runs low	on its hinges. New point in
29	Charles X dethroned, 1830	and now point out, and the
30	<i>changeable, with appearance</i>	ground behind you is as level
31	High tides <i>of rain</i>	as a bowling green.

22 - 8. Hooper put by Oct Hour



Last ☾, 8th d. 1h. 42m. eve. | New ☀, 15th d. 10h. 21m. morn.

D	M	☉	☽	Days	Sun's	☾ R.	☾	☾'s	High
M	W	rises	sets	length	degr. N	& S	south	place	water
1	Th	4	45:7	15:14	30:18	2:8	14:0	23	8 3
2	Fr	4	46:7	14:14	28:17	47:8	49:1	14	8 38
3	Sa	4	47:7	13:14	26:17	31:9	7:1	53	9 12
4	Su	4	48:7	12:14	24:17	16:9	23:2	41	9 5
5	Mo	4	49:7	11:14	22:16	59:9	51:3	22	10 10
6	Tu	4	51:7	9:11	18:16	43:10	15:4	4	10 58
7	W	4	52:7	8:14	16:16	26:10	39:4	37	11 37
8	Th	4	53:7	7:14	14:16	10:11	5:5	31	morn
9	Fr	4	55:7	5:14	10:15	52:11	49:6	18	0 34
10	Sa	4	56:7	4:14	8:15	35:morn	7:10	10	1 54
11	Su	4	57:7	3:14	6:15	17:0	19:8	4	3 21
12	Mo	4	58:7	2:14	4:11	59:1	9:9	3	4 44
13	Tu	5	0:7	0:11	0:14	41:2	19:10	5	5 49
14	W	5	1:6	59:13	58:14	23:3	9:11	8	6 40
15	Th	5	2:6	58:13	56:14	4:sets	aft.10	10	7 24
16	Fr	5	4:6	56:13	52:13	45:8	6:1	9	8 2
17	Sa	5	5:6	55:13	50:13	26:8	38:2	5	8 40
18	Su	5	7:6	53:13	46:13	7:9	7:2	58	9 16
19	Mo	5	8:6	52:13	44:12	47:9	36:3	49	9 55
20	Tu	5	10:6	50:13	40:12	28:10	5:4	40	10 40
21	W	5	11:6	49:13	38:12	8:10	36:5	29	11 32
22	Th	5	13:6	47:13	34:11	43:11	8:6	20	aft.37
23	Fr	5	14:6	46:13	32:11	27:11	47:7	10	1 54
24	Sa	5	15:6	45:13	30:11	7:morn	8:1	1	3 13
25	Su	5	17:6	43:13	26:10	46:9	35:8	52	4 20
26	Mo	5	18:6	42:13	24:10	25:1	26:9	41	5 10
27	Tu	5	20:6	40:13	20:10	4:2	19:10	30	5 56
28	W	5	21:6	39:13	18:9	43:3	18:11	17	6 31
29	Th	5	23:6	37:13	14:9	22:4	19:morn.	1	7 11
30	Fr	5	24:6	36:13	12:9	1:riser	0:2	2	7 44
31	Sa	5	25:6	35:13	10:8	33:7	4:0	45	8 16

Summer. AUGUST begins on Thursday.



It is well in the showy and sunny street
 The glittering groups to see,
 And pleasant upon the road to meet
 With each smiling company ;
 And it is sweet by the broad sea-side
 To mark the course of the coming tide,
 When the waves roll full and free ;
 But the green groves seem more sweet to me,
 Though the gathering dust and the damp sea air,
 And the vain and the idle, be wanting there.

1	m. morn.
2	High water
3	8 3
4	8 35
5	9 12
6	9 5
7	10 10
8	10 58
9	11 37
10	morn
11	0 34
12	1 54
13	3 21
14	4 44
15	5 49
16	6 40
17	7 24
18	8 2
19	8 40
20	9 16
21	9 55
22	10 40
23	11 32
24	aft. 37
25	1 54
26	3 13
27	4 20
28	5 10
29	5 56
30	6 31
31	7 11
32	7 44
33	8 16

First y.	22nd d.	2h. 14m. morn.	Full	30th d.	2h. 41m. morn.
Holidays, weather, &c.			FARMER'S CALENDAR.		
1	Lummas Day.	signs of	Cut down or dig up by the		
2	Opogee. Battle of Blenheim.	roots all	useless or noxious		
3	Arkwright d. 1792.	[1704 plants in good season, that			
4	8th Sun. aft. Trinity.	rain. is to say before their seeds			
5		are formed, or nearly ripen-			
6	Transfiguration of our Lord.	ed, and either throw them to			
7	Name of Jesus.	much your swine, or rake them in-			
8	Low tides. ♀ stat.	finer to heaps, and bury them with			
9	♂ & 7*3,	for asods, mud, rich earth, &c. or			
10	St Lawrence.	few days, dry them in the sun for feed-			
11	10th Sun. aft. Trinity.	Drunsing Cattle in the winter.—			
12		More [high] This is the right time in the			
13	Queen Adelaide born 1792.	year for destroying the bush-			
14		showers. es, which infest your pastures.			
15	Very high tides. ☉ Perigee.	Wet weather is best for this			
16		fine for purpose, because the sap ves-			
17	Frederick the Great d. 1786.	sels will continue open lon-			
18	11th Sun. aft. Trinity.	the ger, the sap will be dis-			
19	Tides fall.	season, charged, the roots weakened,			
20		much cooler, and eventually they will lose			
21	King William IV. born 1765,	their power of producing new			
22	☉ en. ♀. low tides. [kept 25th]	shoots. Take a scruti nizing,			
23		fine [May scientific survey of your fruit			
24	St. Bartholomew.	settled trees, and pick off a part of			
25	12th Sun. aft. Trin.	the fruit from the limbs which			
26		weather are over loaded, or put props			
27	☉ runs low. look out for	under them. Your swine will			
28	St Augustine.	cutten the raster, if they can			
29	John Bap. behcad. ☉ apo.	have access at will to char-			
30	High tides.	a storm soul, which will give them an			
31	John Bunyan died, 1688.	pe etite for their food.			

SEPTEMBER, 30 days. IX Month



Last ☾, 7th d. 1h 41m. morn. | New ☀, 13th d. 6h. 13m. eve.

D	D	☀	☀	Days'	Sun's	☾	R.	☾	☾'s	High
M	W	rises	sets	len'th	dec. N	& S	south	place	Water	
1	F	5	27	6	17	8	41	27	♀	8 48
2	M	5	28	6	17	8	27	10	♀♀	9 20
3	T	5	30	6	13	07	33	8	♀♀	9 52
4	W	5	31	6	29	12	58	7	☽☽	10 29
5	Th	5	33	6	27	12	54	6	☽☽	11 14
6	Fr	5	34	6	26	12	52	6	☽☽	morn.
7	Sa	5	36	6	24	12	48	6	☽☽	0 10
8	F	5	38	6	22	12	44	5	☽☽	1 31
9	M	5	39	6	21	12	42	5	☽☽	3 11
10	T	5	41	6	19	12	38	4	☽☽	4 37
11	W	5	42	6	18	12	34	3	☽☽	5 42
12	Th	5	44	6	16	12	32	4	☽☽	6 33
13	Fr	5	45	6	15	12	30	3	☽☽	7 15
14	Sa	5	47	6	13	12	26	3	☽☽	7 51
15	F	5	48	6	12	12	24	3	☽☽	8 27
16	M	5	50	6	10	12	20	2	☽☽	9 2
17	T	5	51	6	9	12	18	2	☽☽	9 41
18	W	5	53	6	7	12	14	1	☽☽	10 24
19	Th	5	54	6	6	12	12	1	☽☽	11 16
20	Fr	5	55	6	5	12	10	1	☽☽	aft. 17
21	Sa	5	57	6	3	12	0	0	☽☽	1 34
22	F	5	58	6	2	12	0	0	☽☽	2 54
23	M	6	0	6	0	12	0	0	☽☽	4 11
24	T	6	1	5	50	11	58	0	☽☽	4 53
25	W	6	3	5	57	11	54	0	☽☽	5 37
26	Th	6	4	5	53	11	52	1	☽☽	6 16
27	Fr	6	6	5	51	11	48	1	☽☽	6 40
28	Sa	6	7	5	53	11	46	2	☽☽	7 22
29	F	6	9	5	51	11	42	2	☽☽	7 55
30	M	6	11	5	49	11	38	2	☽☽	8 27



Autumn. **SEPTEMBER.** begins on Sunday.

The warm sun is failing; the bleak wind is wailing,
The bare boughs are sighing, the pale flowers are dying,

And the year

On the earth her deathbed, in a shroud of leaves dead,
Is lying.

Come, months, come away,

From November to May,

In saddest array;

Follow the bier

Of the dead cold year;

And like dim shadows watch by her sepulchre.

Republic of Letters, Pt. 4, p. 148.

m. eve.

High Water

8 48
9 26
9 52
10 29
11 14
morn.

0 10

1 31
3 11

4 37
5 43

6 33
7 15

7 51
8 27

9 2
9 41

10 24
11 16

aft. 17
1 31

2 54
4 11

1 53
5 37

6 16
6 40
7 22
7 55
8 27

First D, 20th d. 3h 1m. eve. | Full O, 28th d. 7h. 12m. eve.

nm | Holiday, Weather, &c | FARMER'S CALENDAR.

F	13th Sun. aft. Trin.	♄ stat.	
2	London Burnt 1666.	O S.	See to your fattening swine.
3	♄ ☾ & ♃	rain.	The best method of feeding
4		Remarkably	all kinds of grain to hogs is
5		fine	to grind it to meal, and mix
6	Rev. in Brunswick, Ger.		it with water, in proportion of
7	Low tides. Enurachus		5 bushels of meal to 100 gal-
F	14th Sun. aft. Trin.	Nat. of B	lons of water; the mass to be
9	♄ gr. elm. ☾ runs high.	V Mary	well stirred several times a
10	♄ ☾ & ♀.	again.	day until it has fermented
11		changes to	& be come slightly acid, when
12		cooler	it will be ready for use. In
13	♃ perigee. Gen. Wolfe killed		this way two or three vessels
14	Very high tides. H. Cross [59		must be kept for fermentation
F	15th Sun. after Trinity		in succession; and the profit
16		rather	will pay the expense."—
17	Lambert.	dull.	Change of diet makes fat-
18	Lawrence Sterne died 1768		swine. The unripe ears of
19		Now look out for a	Indian corn should be given
20	Low tides.		them before they become shri-
21	St. Matthew. ☾ runs low.		velled and mouldy. Hard corn
F	16th Sun. aft. Trinity		should not be dealt to swine,
23	☉ crosses the line at 2h 37m		without soaking, boiling, or
24	violent storm, [morn. ☉ en. ☽		grinding. Indian meal will be
25		with high winds.	better for boiling, or at least
26	St. Cyprian. ☽ apogee.		scalding; and every kind of
27	Prince de Polignac & al. im-		food proper for swine will be
28	High tides. [peached 1830		greatly improved by cock-
F	17th Sun. aft. Trin. St. Michael's		ling.
29	St. Jerome [& All Angel's Day;		



Last ☾, 6th d. 1h. 55m. morn. | New ☀, 13th d. 2h. 53m. morn

D	D	☺	☺	Days'	Sun's	☽ R.	☾	☽'s	High
M	W	rises	sets	lent'h	dec.S.	& S.	south.	place.	water
1	Tu	6	12 5	48 11	36 3	11 7	28 1	43	9 0
2	W	6	14 5	46 11	32 3	34 7	55 2	28	9 37
3	Th	6	16 5	44 11	28 3	58 8	28 3	15	10 18
4	Fr	6	17 5	43 11	26 4	21 9	10 4	5	11 4
5	Sa	6	19 5	41 11	22 4	44 9	58 4	59	morn.
6	F	6	20 5	40 11	20 5	7 10	58 5	55	0 3
7	M	6	22 5	38 11	16 5	30 morn.	6 53	☽	1 24
8	Tu	6	23 5	37 11	14 5	53 0	4 7	53	3 5
9	W	6	25 5	35 11	10 6	16 1	20 8	51	4 31
10	Th	6	26 5	34 11	8 6	39 2	34 9	47	5 32
11	Fr	6	28 5	32 11	4 7	2 3	58 10	44	6 21
12	Sa	6	29 5	31 11	2 7	24 5	16 11	37	7 1
13	F	6	31 5	29 10	58 7	47 sets.	aft. 29	☽	7 36
14	M	6	33 5	27 10	54 8	9 6	44 1	23	8 12
15	Tu	6	34 5	26 10	52 8	32 7	17 2	16	8 48
16	W	6	36 5	24 10	48 8	54 7	54 3	9	9 28
17	Th	6	37 5	23 10	46 9	16 3	38 4	3	10 12
18	Fr	6	39 5	21 10	42 9	38 9	26 4	56	11 1
19	Sa	6	40 5	20 10	40 10	0 10	21 5	48	11 58
20	F	6	42 5	18 10	36 10	21 11	17 6	39	aft. 17
21	M	6	43 5	17 10	34 10	43 morn.	7 26	☽	2 19
22	Tu	6	45 5	15 10	30 11	4 9	18 8	12	3 28
23	W	6	46 5	14 10	28 11	25 1	20 8	58	4 26
24	Th	6	48 5	12 10	24 11	46 2	21 9	39	5 9
25	Fr	6	50 5	10 10	20 12	7 3	23 10	21	5 48
26	Sa	6	51 5	9 10	18 12	28 4	25 11	4	6 24
27	F	6	53 5	7 10	14 12	48 5	28 11	46	6 59
28	M	6	54 5	6 10	12 13	8 rises	morn.	☽	7 34
29	Tu	6	56 5	4 10	8 13	28 6	3 0	34	8 8
30	W	6	57 5	3 10	6 13	48 6	56 1	17	8 48
31	Th	6	58 5	2 10	4 14	8 7	12 2	8	9 23

Month.

Autumn. OCTOBER, begins on Tuesday.

The chill rain is falling, the nipt worm is crawling,
The rivers are swelling, the thunder is knelling

For the year,

The blythe swallows are flown, and the lizards each gone
To his dwelling ;

Come, months, come away ;

Put on your white, black, and grey ;

Let your light sisters play—

Ye, follow the bier

Of the dead cold year,

And make her grave green with tear on tear. *Rep. Let.*

First ☾, 20th d. 7h. 50m. morn. | Full ☉, 28th d. 11h 34m morn.

D.M. | Holidays, Weather, &c. | FARMER'S CALENDAR.

h. morn

High water

9 0
9 37
10 18
11 4
morn.
0 3
1 24
3 5
4 31
5 32
6 21
7 1
7 36
8 12
8 48
9 28
10 12
11 1
11 58
aft. 17
2 19
3 28
4 26
5 9
5 48
6 24
6 59
7 34
8 8
8 48
9 23

1	Remigius.	<i>Good</i>	Some farmers say, "it were
2	Major André executed, 1780		better that the sun never
3		<i>weather for</i>	should shine upon potatoes—
4		Belgium dec.	they should be housed with
5	☾ runs high. [indepn. 1850		all the dirt that adheres to
6	18th Sun. af. Trin. Low tides.		them." It is even beneficial
7		<i>the season</i>	to add more dirt to potatoes
8			in the cask, to exclude ex-
9	St Denys.	<i>Becomes</i>	ternal air as much as possi-
10	☾ & ♀ ♄.	<i>cooler.</i>	ble ; their surface should be
11	☾ per. America discovered.		kept moist, and the atmós-
12	Tides rise. [1492, O S.		phere, which surrounds them
13	19th Sun. af. Trin.		as little above the freezing
14	High tides.	<i>rather</i>	point as possible. In many
15	Virgil born, B.C. 70. <i>unpleasant</i>		situations it will be an excel-
16	Kosciusko died, 1817.		lent scheme to rake up all
17		<i>now comes</i>	the leaves of trees, and mould,
18	St Luke. ☾ runs low.		which has been produced by
19		<i>on a long</i>	their decay, which can be
20	20th Sun. af. Trin. Low tides.		procured at a reasonable ex-
21	♄ ♃ & ♀. Bat. of Traf. 1805		pense and cast them into the
22		<i>rain storm</i>	barn yard, as a layer to ab-
23	☉ enters ♍. Dápegec.		sorb the liquid manure from
24		<i>pleasant</i>	the cattle. Likewise it would
25	St Crispin.	<i>again</i>	be well to place quantities of
26	♃ & ♃ ♄. Hogarth died.		them under cover, in situati-
27	21st Sun. aft. Trin. [1764		ons where you can obtain
28	St Simon & St Jude. ♀ stat		them in winter to use as litter
29	High tides.	<i>more rain.</i>	to your stables, &c. They do
30		<i>unsettled for</i>	not rot easily, but they serve as
31		<i>some days.</i>	a sponge to imbibe and re-



Last ☾, 4th d. 8h. 36m eve. | New ●, 11th d. 1h. 40 m. eve.

D	D	☺	☺	Days'	Sun's	☾ R.	☾	☾'s	High	
M	W	rises	sets	lent'h	dec.S.	& S.	south.	place.	water	
1	Fr	7	05	0	10	0	14 27	8 03	0	10 3
2	Sa	7	14	59	9 58	14 46	8 55	3 55	☽	10 55
3	F	7	24	58	9 56	15 5	9 57	4 52	☽	11 51
4	M	7	34	57	9 54	15 24	11 8	5 49	☽	morn.
5	Tu	7	54	55	9 50	15 42	morn. 6	47	☽	1 15
6	W	7	64	54	9 48	16 0	0 24	7 42	☽	2 48
7	Tu	7	74	53	9 46	16 18	1 40	8 35	☽	4 10
8	Fr	7	94	51	9 42	16 36	2 52	9 27	☽	5 23
9	Sa	7	104	50	9 40	16 53	4 9	10 19	☽	6 0
10	F	7	124	48	9 36	17 10	5 23	11 10	☽	6 39
11	M	7	134	47	9 34	17 27	sets. aft. 3		☽	7 17
12	Tu	7	144	46	9 32	17 43	5 46	0 55	☽	7 53
13	W	7	154	45	9 30	17 59	6 27	1 49	☽	8 30
14	Th	7	174	43	9 26	18 15	7 14	2 44	☽	9 11
15	Fr	7	184	42	9 24	18 31	8 7	3 37	☽	9 52
16	Sa	7	194	41	9 22	18 46	9 4	4 30	☽	10 39
17	F	7	204	40	9 20	19 1	10 4	5 20	☽	11 30
18	M	7	214	39	9 18	19 15	11 5	6 6	☽	aft. 23
19	Tu	7	224	38	9 16	19 29	morn. 6	51	☽	1 25
20	W	7	244	36	9 12	19 43	0 7	7 33	☽	2 30
21	Th	7	254	35	9 10	19 57	1 8	8 15	☽	3 32
22	Fr	7	264	34	9 8	20 10	2 10	8 57	☽	4 26
23	Sa	7	274	33	9 6	20 22	3 11	9 39	☽	5 11
24	F	7	284	32	9 4	20 35	4 14	10 22	☽	5 51
25	M	7	294	31	9 2	20 47	5 18	11 7	☽	6 30
26	Tu	7	304	30	9 0	20 58	6 24	11 56	☽	7 8
27	W	7	314	29	8 58	21 9	rises. morn.		☽	7 48
28	Th	7	324	28	8 56	21 20	5 51	0 49	☽	8 27
29	Fr	7	324	28	8 56	21 30	6 43	1 44	☽	9 7
30	Sa	7	334	27	8 54	21 40	7 44	2 41	☽	9 43

Autumn. NOVEMBER begins on Friday.



When icicles hang by the wall,
 And Dick the shepherd blows his nail,
 And Tom bears logs into the hall,
 And milk comes frozen home in pail,
 When all aloud the wind doth blow,
 And coughing drowns the parson's saw,
 And birds sit brooding in the snow,
 And Marian's nose looks red and raw ;
 When blood is nipt; and ways be foul,
 Then nightly sings the staring owl,
 Tu-whoo !
 Tu-whit ! tu-whoo ! a merry note,
 While greasy Joan doth keel the pot.

m. eve.
 s High
 e. water

10 3
 10 55
 11 51
 morn.
 1 15
 2 48
 4 10
 5 23
 6 0
 6 39
 7 17
 7 53
 8 30
 9 11
 9 52
 10 39
 11 30
 aft. 23
 1 25
 2 30
 3 39
 4 26
 5 11
 5 51
 6 30
 7 8
 7 48
 8 27
 9 7
 9 43

First ☽, 19th d. 3h. 49m morn | Full ☉, 27th d. 3h 6m. morn

DM | Holidays, Weather, &c | FARMER'S CALENDAR.

1	All Saints Day.	tain urine, and convey to the
2	All Soul's Day. ☾ runs high	field much food for plants,
F 22d	Sun. af. Trin. Prs Sophia b	which, otherwise, might be
4	Wm II. landed in England 1688	lost. Gather winter apples by
5	Low tides. Powder Plot 1605	hand in the middle of fair days
6	Duke of Orleans guil. 1793	and by putting them down in
7	Belgian coast block. 1830	sand well dried, it is said you
8	☾ per. Prs. Augusta Sophia	may keep them till apples are
9	☾ & ♀ ♂, <i>pulling weather</i> [born.	again in season. Land which
F 23rd	Sun. af. Trinity. is near.	is composed in part of clay,
11	St Martin.	or what is called a stiff soil,
12	Higher tides. ♂ ● & ♀	should be ploughed in the fall
13	Britius <i>colder with</i>	and laid as light as possible,
14	Warsaw taken by the Rus-	so as to expose it to the action
15	Machutus [sians, 1794	of frost, which will pulverize
16	☽ runs low. <i>strong symptoms</i>	and subdue it; and insects
F 24th	Sun. af. Trin. Tides full	will be thus destroyed by ex-
18	<i>of snow</i>	posure to the rigors of winter.
19	Very low tides. ♀ gr. elong	But ploughed land which is
20	☾ apogee.	sandy, loose, and porous should
21	<i>pleasant for</i>	lie and consolidate till spring.
22	St Cecilia's Day. ☉ enters ♯	It is time to take a view of
23	St Clement. ♂ ○ & ♀ the	your barn, cellar, and all o-
F 25th	Sun. af. Trin. <i>season.</i>	ther buildings, where injury
25	St Catharine.	can be sustained by frost, and
26	<i>some snow</i>	wherever it is possible close
27	High tides. Belgian Cong. ex-	every avenue to the intrusions
28	[cluded. H. of Orange, 1830	ons of that unwelcome visit-
29	♀ stat. Rev. in Poland, 1830	tant. There is no danger of
30	St. Andrew. ☾ runs high	using too much salt in pre-
		serving fat pork.

DECEMBER, 31 days. XII. Month'



Last ☾, 4th d. 4h 17m. morn. New ☉, 11th d. 2h 57m. morn.

D.	D.	☉	☉	Days	Sun's	DR.	☾	☾'s	High
M.	W.	rises	sets	leni'h.	dec.S.	& S.	south.	place.	water
1	F	7	34.4	26.8	52.21	50.8	53.3	39	10 36
2	M	7	35.1	25.8	50.21	59.10	6.4	37	11 31
3	T	7	35.1	25.8	50.22	7.11	20.5	32	morn
4	W	7	36.4	24.8	48.22	16	morn.6	25	0 45
5	Th	7	37.4	23.8	46.22	24.0	38.7	16	2 2
6	Fr	7	37.4	23.8	46.22	31.1	50.8	6	3 27
7	Sa	7	38.1	22.8	44.22	38.3	2.8	55	4 31
8	F	7	39.4	21.8	42.22	44.4	14.9	44	5 25
9	M	7	39.4	21.8	42.22	50.5	27.10	35	6 9
10	Tu	7	40.4	20.8	40.22	56.6	39.11	28	6 49
11	W	7	40.4	20.8	40.23	1	sets	aft.22	7 26
12	Th	7	40.4	20.8	40.23	6.5	45.1	16	8 7
13	Fr	7	41.4	19.8	38.23	10.6	38.2	8	3 45
14	Sa	7	41.4	19.8	38.23	14.7	38.3	0	9 25
15	F	7	41.4	19.8	38.23	17.8	40.3	49	10 6
16	M	7	41.4	19.8	38.23	20.9	42.4	34	10 45
17	Tu	7	41.4	19.8	38.23	22.10	42.5	17	11 27
18	W	7	42.4	18.8	36.23	24.11	44.5	59	aft.14
19	Th	7	42.4	18.8	36.23	26	morn.6	40	1 9
20	Fr	7	42.4	18.8	36.23	27.0	45.7	21	2 11
21	Sa	7	42.4	18.8	36.23	27.4	46.8	3	3 16
22	F	7	42.4	18.8	36.23	27.2	48.8	47	4 17
23	M	7	42.4	18.8	36.23	27.3	52.9	34	5 9
24	Tu	7	42.4	18.8	36.23	26.5	0.10	24	5 55
25	W	7	41.4	19.8	38.23	24.6	8.11	19	6 43
26	Th	7	41.4	19.8	38.23	22	rises.	inorn.	7 39
27	Fr	7	41.4	19.8	38.23	20.5	19.0	17	8 6
28	Sa	7	41.4	19.8	38.23	17.6	26.1	17	8 48
29	G	7	41.1	19.8	38.23	14.7	40.2	16	9 28
30	M	7	40.1	20.8	40.23	10.9	55.3	14	10 10
31	Tu	7	40.4	20.8	40.23	6.10	11.4	8	11 10

The sky in darker clouds is clad,
 And dimly shines the once bright sun;
 And earth's array'd in looks more sad—
 All tell that Autumn's race is run;
 And loudly the harsh winds sigh.
 Old winter's cloak of snowy down
 O'er this green earth again is thrown;
 'Tis crested with his icy frown
 To last till Spring comes nigh.
 When sun and earth again is seen,
 Each in its summer gold and green,
 And beauty looks as it ne'er had been
 Crush'd by old Winter's sigh.

n. morn.

High water
10 36
11 31
morn
0 45
2 2
3 27
4 31
5 25
6 9
6 49
7 26
8 7
8 45
9 25
10 6
10 45
11 27
aft. 11
1 9
2 11
3 16
4 17
5 9
5 55
6 43
7 39
8 6
8 48
9 28
10 10
11 10

First D, 19th 1h. 16m morn | Full O, 26th d. 5h 16m morn.

DM | Holidays, Weather, &c. | FARMER'S CALENDAR.

F	Advent Sunday.	<i>Rather</i>	The farmer should obtain
2	Battle of Austerlitz, 1805.		his year's stock of wood for
3	Rev. in England, 1688.	<i>colder</i>	fuel, as early in the season as
4	Tides rather low. D per. with		possible, and before the depth
5	♂ D h.	<i>frost.</i>	of snow in the wood-lands
6	Nicolas.	<i>Now look</i>	renders it difficult to traverse
7	Ney Shot 1815.	<i>out for a</i>	them by a team. It would be
F	2d Sun. in Adv. Concep. BVM	<i>driving</i>	better for farmers, generally
9			speaking, to use the saw in-
10			stead of the axe, in preparing
11	High tides.	<i>snow storm.</i>	wood for the fire. It is said
12		<i>Becomes</i>	that a fire composed of
13	St Lucy. ☾ runs low.	<i>still</i>	sticks of wood, not more than
14	Washington died 1799	<i>colder</i>	14 inches long, will give more
F	3rd Sun. in Adv. ♂ ☾ & ♀		than two thirds as much heat
16		<i>clear and</i>	as that made of double the
17	Simon Bolivar died, 1830		length; and that sticks of iron
18	D Apogee	<i>cold, but</i>	3 to 4 inches in diameter on a
19	Uncommonly low tides. ☽ stat.		medium will be found most
20		<i>pleasant for</i>	economical. A barren head
21	St. Thomas. Winter Solstice		is much more to be dreaded
F	4th Sun. in Adv. [☉] ents. 13		and deprecated than a barren
23	<i>the season</i> [7h 52m eve.		soil; and you may sow the
24		<i>some snow</i>	seeds of knowledge and bring
25	Christmas Day	<i>may</i>	the fruits of virtue to natu-
26	St Stephen. D eclipsed total		ty, quite as well in the win-
27	St. John Ev. not [☽] & part visible		ter as in the summer, and by
28	Holy Innocents' D high tides		this kind of culture you will
F	1st Sun. af. Christmas ☽ gr. el.		be sure to obtain a good crop
30		<i>be expected.</i>	of present prosperity, as well
31	St. Silvester. ☉ in Perigee.		as future felicity.

PROVINCE OF NOVA-SCOTIA.

Lieutenant Governor, His Excellency Lieutenant
General Sir Peregrine Maitland, K.C.B.

President, Administering the Government, during
the absence of the Lieut. Governor, the Honble.
THOMAS NICHOLSON JEFFERY.

—●—

*HIS MAJESTY'S COUNCIL.**

Honorable Sampson Salter Blowers, President.
Honorable and Right Rev. John, Lord Bishop of
Nova-Scotia.

Hon. Thomas Nicholson Jeffery,
Hon. Brenton Halliburton,
Hon. Hibbert Newton Binney,
Hon. Enos Collins,
Hon. Simon Bradstreet Robie,
Hon. Charles Ramage Prescott,
Hon. Samuel Cunard,
Hon. Henry Hezekiah Cogswell,
Hon. Peter McNab,
Hon. James Tobin,
Hon. Joseph Allison, and

Clerk, Sir Rupert D. George, Baronet.
Asst. Clerk, John C. Halliburton, Esq.
Chaplain, Rev. Robert Willis, D. D.
Messenger, Mr. Joseph Skallish.

*The Members of His Majesty's Council, and the Speaker of the
House of Assembly, are Justices of the Peace throughout the Province.

HOUSE OF ASSEMBLY.

S. G. W. ARCHIBALD, Esquire, Speaker.*

COUNTIES.

Halifax....†S G W Archibald, †Wm Lawson, †Geo Smith and
 Jo'ham Blanchard, Esqrs
Cumberland....†Alex Stewart and †Joseph Oxley, Esqrs
Hants....†Benj Dewolf and Wm B Bliss, Esqrs
King's....Elisha DeWolf, jr. and Saml Chipman, Esqrs
Queen's....†Joseph Freeman and †Jas R Dewolf, Esqrs
Annapolis....† Wm H Roach and †Jno Johnston, Esqrs
Lunenburg....†Wm Rudolf and John Creighton, Esqrs
Shelburne....Herbert Huntington and James Lent, Esqrs.
Sydney....† John Young and †Thos Dickson, Esqrs
Cape Breton....Lawrence Kavanagh, James B. Uniacke, and
 William Young, Esqrs.

TOWNSHIPS.

Halifax....†Chas R Fairbanks and Stephen W Deblous, Esqrs
Yruro.... Alexander Archibald, Esq
Onslow.....Robt Dickson, Esq
Londonderry....†John Wier, Esq
Amherst....†James S Morse, Esq
Windsor....
Falmouth.... †Wm Shey, Esq
Newport....Felix Cochran, Esq
Cornwallis.... †John Morton, Esq
Horton.... †James Harris, Esq
Liverpool....James Barss, Esq
Annapolis....†James R Lovett, Esq
Granville....James Delap
Digby....Charles Budd, Esq
Lunenburg....†John Heckman, Esq.
Barrington....†John Homer, Esq
Shelburne....Charles Roche, Esq
Yarmouth....†S S Poole, Esq
Sydney, C. B.....E. M. Lodd, Esq
Arichat, C. B.....Law. O'Connor Doyle, Esq.

Chaplain, Rev R Fitz Uniacke, AM ; Clerk, John Whidden, Esq ; Asst Clerk, J F Gray, Esq ; Sergeant at Arms, Mr. Matthew Forrester ; Asst Sergt. at Arms, Mr. Alexander Boyle ; Messenger Mr. John Gibbs.

Speaker of the
 at the Province.

Court of Chancery.—Chancellor, His Honor the President; *Master of the Rolls*, Hon S B Robie, L L D; *Masters*, Hon B Halliburton, Lewis M Wilkins, Peleg Wiswall and J G Marshall, Esqrs; *Registrar*, Nathaniel W White, Esq; *Counsellors and Solicitors*, the Barristers and Attornies of the Supreme Court.

Court of Error; Marriage and Divorce.—His Majesty's Council, Advocates and Proctors, the Barristers and Attornies of the Supreme Court.

Court of Vice Admiralty.—Judge, Hon S S Blowers; Advocate General, S G W Archibald, Esq L L D; Sol. General, C R Fairbanks, Esq; Registrar, J. P. Hood, Esq; Deputy Reg. J S Tremain, Esq; Marshall, S W Deblois, Esq; Deputy Marshall, Esq; Advocates and Proctors, the Barristers and Attornies of the Supreme Court.

Court of Escheats and Forfeitures.—Commissioner, J W Nutting, Esq; Registrar, Sir Rupert D George, Bt.

SUPREME COURT.—Chief Justice, Hon Sampson Salter Blowers; Puisne Judges, Hon B Halliburton, Lewis M Wilkins and Richard J Uniacke, Esqrs; Associate Judge, Peleg Wiswall, Esq; Attorney General, S G W Archibald, Esq. L L D; Solicitor General, C R Fairbanks, Esq; King's Counsel, William Hill, and Esqrs; Clerk of the Crown and Prothonotary throughout the Province, Wm Thompson Esq; Deputy, J W Nutting, Esq.

Barristers and Attornies at Law of the Supreme Court, residing in the Province.

Halifax.—Hon. H H Cogswell, D S Clarke, S G W Archibald, (Attorney Gen.) J W Nutting, William Hill, (King's Counsel.) C R Fairbanks, (Sol. Gen.) James W Johnston, N W White, Wm B Bliss, Beamish Murdoch, Alex. Primrose, Jas. S Tremain, Charles Twining, Jas. B Uniacke, John James Sawyer, James F Gray, Went. Fliether, Wm Young, Charles W H Harris, Hugh Hartsborne, E H Harrington, Lawrence O'C. Doyle, John C. Halliburton, Wm Bowman, Wm Sutherland, Thomas B Aitken, Nepeau Clarke, Archibald McQueen and Charles Hill Wallace, Esqrs.

Pictou.—Thomas Dickson, Jotham Blanchard, Henry Blackadar, Martin Wilkins and Edward Roach, Esqrs.

Truro.—Jonathan Masters, George R Grassie and James Stewart Clarke, Esqrs.

Annapolis.—Henry Goldsmith, John Johnston, Wm H Lee, James A Dennison, Charles T C McColla and John W Ritchie, esqrs.

Digby.—G K Nicholls, esq.

Bridgetown.—Stephen Bromley, Alex H Winniett and Silas I. Morse, esqrs.

Amherst.—James S Morse, Alex Stewart, Charles D Roach and Silas C Morse, esqrs.

Kentville.—John Whidden, John C Hall, Stephen H Moore and Wm E Smith, esqrs.

Parrsboro',—Robert B Dickson, esq.

Windsor.—L M Wilkins and Harry King, esqrs.

Newport.—D D Stewart, esq.

Antigonish.—John T Hill and Alex McDougall, esqrs.

Yarmouth.—Wm H Keating, esq.

Guysboro'.—William F Des Barres, esq.

Liverpool.—William Sterns, Samuel P Fairbanks and Snow Parker Freeman, esqrs.

Lunenburg.—John Creighton, George F Solomon, Chas B Owen and Charles Bolman, esqrs.

Chester.—William Greaves, esq.

CAPE-BRETON, Arichat.—Wm C Delaney and James Turnbull, esqrs.—[Sydney,]—R Gibbons and E M Dodd, esqrs.

Non-residents practising in Cumberland, E B Chandler and James Stewart, esqrs.

Nova-Scotia Barrister's Society.

Patrons, The Chancellor, and the Honorable the Chief Justice, Honorary Members, the Judges of the Supreme Court, Treasurer, Hon. H H Cogswell, Librarian and Sec'y. J W Nutting, Esq,

Commissioners for Light Houses.

Hon. S Cunard, Thomas Maynard and James H. Tidmarsh, Esqrs.

Commissioners for the management of the Establishment on Sable Island—WM. LAWSON, EDWARD WALLACE. EDWARD CUNARD and JAS. H. TIDMARSH, Esqrs. Clerk, Mr Edward Duckett, Junr.

Commissioners of the Revenue.

Hon. S B Robie, Hon H H Cogswell, Wm Lawson, Law. Hartshorne and Charles W Wallace, Esqrs. Clerk, Mr. Edw Duckett, Junr.

COLLEGES AND CLERGY.
King's College Windsor.

Patron, His Grace the Lord Archbishop of Canterbury.

Visitor, the Lord Bishop of Nova-Scotia.

Governors, His Excellency the Lieutenant Governor; The Lord Bishop of Nova-Scotia, the Hon the Chief Justice, the Judge of the Vice Admiralty Court, the Speaker of the House of Assembly, the Provincial Secretary, the Attorney General, the Solicitor General, the President and Vice President of the College.

President & Professor of Divinity and Hebrew, Rev Charles Porter, D.D.; Vice President, Professor of Grammar, Rhetoric, Logic, moral Sciences and Metaphysics, Rev Acting Professor of Mathematics, Natural Philosophy and Astronomy, Rev John Stevenson, A.M.; Sec'y & Treasurer, J C Halliburton, Esq; Fellow, Bursar and Librarian, Rev Wm B King, A.M.; Principal of the Academy under the direction of the Governors of King's College, Rev Joseph H. Clinch, A.M.

TERMS.—Michaelmas Term commences, 1st Sept. and ends on the 15th Dec. — Hilary Term commences, 15, Jan. and ends on the Saturday preceding Palm Sunday. — Easter Term commences, on the Monday after Easter Monday, and ends Saturday se'night before Whit Sunday. Trinity Term commences, on the morrow of Trinity Sunday, and ends on the 1st of July.

PICTOU ACADEMY, PICTOU.

TRUSTEES,—Rev Thos M'ulloch, D.D.; Rt Rev William Fraser, Bishop of Tanen, Rev D Ross, Rev James Robson, Rev John McKimley, Rev D A Fraser, Rev K J M'Kenzie, Rev J M'Rae, S G W Archibald, L.L.D.; Alex Grant, Thos Dickson and David Creighton, Esqrs. Principal, Rev Thos. M'ulloch, D.D.; Professor, Mr M. McCulloch; Teacher of the Inferior Branches, ; Terms—first term commences 1st April. Second term, commences 1st October, each term lasts four months.

BAPTIST ACADEMY—Horton

Managing Committee.—Doctor, Lewis Johnston, Rev E A Crawley, Rev Wm Chipman, Rev John Pryor, J W Nutting, J W Johnston, W Johnson and Simon Fitch, Esqrs.
Principal Rev John Pryor A.M.

Clergy of the Established Church in N. S.

The Hon. and Rt. Rev, John, Lord Bishop of Nova-Scotia, New-Brunswick, Prince Edward Island, Newfoundland and Bermuda.

Halifax—Ven. Robt Willis, D.D. Archdeacon and Rector, and Rev William Cogswell, A.M. Curate, of St Paul's; Rev R Fitz. Uniacke, A.M. Rector of St George's; Rev J T Twining.

D D. Garrison Chaplain.---Newport, Rev Chas Porter, D D. Pres. of K C.—Falmouth, Rev Wm Cochran, DD.—Windsor, Rev William C King, A M. Rector of the University Church.---Digby, Rev Roger Viets, AB; Aylesford, Rev Granville, Rev Fras Whalley; Bridgetown, Rev James Robertson; Weymouth, Rev Alfred Gilpin, A B; Yarmouth, Rev Thos A Grantham, A M.; Shelburne, Rev Thos B Rowland, L L D.; Liverpool, Rev J T T Moody, A B; Lunenburg, Rev James C Cochran, A B.; LaHave, Rev J W Weeks, A B; Chester, Rev James Shreve, A B; Cornwallis, Rev J Moore, Campbell, A M; Horton, Rev John Clarke, A M; Rawdon, Rev Geo W Morris A M; Sackville, Rev ; Dartmouth, Rev M B Desbrisay, A B; Truro, and Visiting Missionary, Rev J Burnyeat; Annapolis, Rev, Edwin Gilpin, A B.; Amherst, Rev R B Wiggins, A B; Pictou, Rev Charles Elliott, A B.; Antigonish, Rev Thos H White, A B; Guysboro' Rev Charles W Weeks, A M; Sydney, Rev Charles Ingles, A B; Arichat, Rev Jas. Shaw.—Visiting Missionary, Rev W B King, AM; Principal Collegiate School, Windsor, Rev J H Clinch, A M.

Ministers of the Established Church of Scotland.

Halifax, Rev John Scott, Rev John Martin and Rev Thomas Aitken, A M.; Dartmouth, Rev James Morrison; Cornwallis, Rev Wm Forsyth; Horton, Rev Geo Struthers; Shelburne, Rev Gavin Lang; Pictou Town, Rev Ken. J McKenzie; Eads River, Pictou, Rev Don A Fraser; West River, Pictou, Rev. Upper Settlement, East River, Rev John McRae; Merigomish, Rev Dougald McKeichan.

Clergy of the Presbyterian Church of Nova-Scotia.

PRESBYTERY OF TRURO.---Lonsberry, Rev J. Brown; Truro, Rev J Waddell; Lower Shubenacadie, Rev T B Crowe; Musquodobit, Rev John Sprott; Economy, Rev A Keir, Sewiacke, Rev J Smith; Windsor, Rev J Murdoch; Upper Shubenacadie, Rev R Blackwood; Onslow, Rev John Baxter.

PRESBYTERY OF PICTOU—Pictou Town, Rev Jno McKinley, A M; West River, Rev Dun. Ross; River John, Rev John Mitchell; Merigomish, Rev Wm Patrick; Derchester, Rev. T Trotter; Tatamagouche, Rev Hugh Ross; St Mary's, Rev Alex Lewis; Mabou, Rev W Millar; Lower Settlement East River, Rev David Roy; Upper Settlement, East River, Rev A McGilvray.

PRESBYTERY OF PRINCE EDWARD ISLAND---Prince Town, Rev J Keir; St Peters, Rev R Douglas; Richmond Bay, Rev W McGregor; Bedeque, Rev R bt. S Paterson; New London, Rev H. Dunbar; Murray Harbour, Rev Daniel McCurdy.

PRESBYTERY OF MIRAMICHI.—Richibucto, Rev J McLean, Chatham, Rev Jno McCurdy; Bathurst, Bay de Chaleur, Rev James Waddell; New Carlisle, Rev Anthony McCabe.

Preachers, Rev Alex Blaikie and Mr W Fraser; Professors of Theology, Rev Thos McCulloch, D D; Clerk of the Synod, Rev James Robson. The Synod meets annually on the last Tuesday of June.

Clergy of the Roman Catholic Church.

Right Rev. Er Wm Fraser, Bishop of Tanen, and Vicar Apostolic of Nova-Scotia. Halifax; Rev John Laughnan. Chezetcook, Rev Dennis Garry. Dartmouth, Rev James Dunphy. St. Mary's Bay, Rev Mr. Sygogue. Argyle, Rev. John B. Morin. Picou, Rev. Mr. Boland. Manchester, Rev James Grant. Tracadie, Rev Pere Vincent. Pooket, Rev Mr Francis. Sydney, Rev George M'Eagency. Bras d'O., Rev Mr McLeod. St Peters, Rev Dennis Lawlor.

Wesleyan Missionaries.

Halifax, Rev W Dowson and Rev M Rieley. Rev Wm Black, supernumerary. Lunenburg, Rev H Pope. Liverpool, Rev George Miller. Berrington, Rev William Padman. Yarmouth, Rev William McDonald. Horton, Rev Jno Snowball. Windsor, Rev Wm Crosscombe. Chairman of the district. Newport, Rev Wm Temple, Secretary; Rev William Bennett, supernumerary. Shubenacadie, Rev Thomas Crosthwaite. Parrsboro' &c Rev J G Hennegar. Wallace, Rev Thos Davis. River John, Rev Thomas Taylor. Guysborough, Rev Wm Smith. Sydney, Cape-Breton, Rev John Marshall. Ship Harbour, C B. Rev Mat h. Cranswick. Charlotte-Town, P. E. I. Rev Stephen Bamford. Tryon and Bedeque, Rev William Webb. — Murray Harbour, Rev Robert Cooney.

Baptist Ministers.

Halifax, Rev. Jno Burton and Rev. E A Crawley, A. M.; Hammonds Plains, Rev. Geo Richardson; Newport, Rev. Geo Dimock; Rawdon and Windsor, Reverend Richard McLearn; Horton, Rev. Theo S Harding, Rev. Jas Stephens & Rev. Jno Pryor A.M.; Cornwallis, Rev. Edw Manning, Rev. David Harris & Rev. Wm Chipman; Falmouth, Rev. Robt Dickie; Aylesford, Rev. Ezekiel Masters; Nictau, Rev. Ingram E Bill; Lower Granville, Rev. ; Upper Granville, Rev. Nut. Viditoe; Annapolis, Rev. Wm Elder; Digby Neck, Rev. Peter Crandall; Clements, Rev. Israel Potter & Rev. ; Wilmot, Rev. R W Cunningham; Brier Island, Rev. Saml Bancroft; Yarmouth, Rev. Harris Harding & Rev Wm Burton; Ragged Islands, Rev Jno Craig; Chester, Rev Joseph Dimock; Amherst, Rev Chas Tupper; River Philip, Rev Saml McCully; Onslow, Rev Jas Munro; Lunenburg, Rev Maynard Parker; Liverpool, Rev Auth'y Dimock; Tryon, Rev Hezek. Hull; Windsor Road, Rev Jno Doyle.

Licentiates, Lower Granville, Joshua B Cogswell; Cornwallis, Thos H Porter; Annapolis, Silas Morse; Aylesford, Hy Saunders, Obadiah Saunders & Eben. Stronach; Guysboro', Jas Brown.

The Association, for this year, will be held at Bridgetown, County of Annapolis, on the first Monday after the 20th June.

MEMORANDUM... *The Sittings of Courts, Names of Officers, &c will be found arranged under the respective counties to which they belong.*

COUNTY OF HALIFAX

High Sheriff of the County, John James Sawyer, Esq.
Coroner, James F. Gray, Esq.

High Court of Chancery, held before the Master of the Rolls, every Monday throughout the year.

Supreme Court sits at Halifax 2d Tues. of Jan. 3rd Tues. April, 2d Tues. of July, and 3d Tues. of Oct.

Inferior Court sits at Halifax 2d Tues of March, June, Sept, and Dec.--Judges, Jas Forman, John Howe, and Saml Head, M. D. Esqrs.

Commissioners' Court sits at Halifax 1st Monday of every month. Commr's Jas Forman, Rich Tremain, Jno Liddell, and D S Clarke, Esqrs. Clerk, N Clarke, Esq.

Police Office open every day throughout the year, Holidays excepted. ---Justices, John Liddell, H Yeomans, & M Richardson, Esqrs. Clerk, D S Clarke, Esq.

Sessions of the Peace held at Halifax 1st Tues. of March, June, Sept, and Dec.

Justices of the Peace for District of Halifax, James Forman, *Custos Rotulorum*; John Howe, Rufus Fairbanks, Saml Head M D, Jno Liddell, Richard Tremain, Henry Yeomans, James Benvie, Adams Archibald, Saml Albre, John Albro, Thomas Holland, M. Richardson, Isaac Rayne, Henry Y. Mott, George N Russel, J. Leander Starr, Wm Logan, Wm H Roach, Henry A Gladwin, John Spry Morris, John Howe, junr. James Noble Shannon, James H Tidmarsh, William Annand, William Stewart, Wm K, Reynolds, Edward H Lowe, George B Creighton, Thomas Green, William H Saeling, Thomas B Desbrisay, Alfred E Coren and Francis Parker, Esqrs. C. P., D. S. Clarke, Esq.

Commissioners for Visiting the Asylum for the Poor.

Hon. Thomas N Jeffery, Hon. Joseph Allison, James Forman, Richard Tremain, M. Richardson, H. Yeomans, John Clark, M. Tobin, G. N. Russell, Thomas Pyle, Jno Spry Morris, & James N. Shannon, Esqrs.

Commissioners of Streets

Halifax---Hon. H. H. Cogswell; Hon. Joseph Allison; G. N. Russell, James Tremain, and W H Saeling, Esqrs---Dartmouth, Saml Albro, Hugh Hartshorne and E H Lowe Esqrs.

Commissioners for the Common of Halifax.

Hon. H. H. Cogswell, Stephen W. Deblois and James B. Uniacke, Esqrs.

Commissioners to examine and select Pilots for the Port of Halifax.—William Pryor, James H. Tidmarsh and Edw. Cunard, Esqrs.

Commissioners of Schools.

Rev. Archdeacon Willis, Rev. John Scott, Rev. M. B. Desbrisay, Lawrence Hartshorne and Edw. H. Lowe, Esqrs.—Clerk, Hugh Hartshorne, Esq.

NATIONAL SCHOOL.....	Mr. Abel S. Gore,	} Masters.
ACADIAN SCHOOL.....	Rev. Jas. Morrison,	
HALIFAX GRAMMAR SCHOOL..	Rev. J. F. Twining, DD	

Officers of the Provincial Revenue.

Collector, Hon. H. N. Binney; Guager and Weigher, Andrew Richardson, Esq; Waiters and Shipping Officers, James Barratt, Robert Hodges and George Sherlock; Collector of light duty, Mr. Edward Duckett; Collector of License duty, Wm. M. Deblois, Esq.

Officers of His Majesty's Customs.

Collector, Hon. Thomas N. Jeffery; Comptroller, Jno. Wallace, Esq; Waiters and Searchers, D. H. Watson & Joseph Dean, Esqrs; Surveyor of Shipping, Mr. Edw. Duckett; Tide Surveyors, Messrs. F. W. Acheson and T. Holder; Warehouse-keeper, W. H. Iles, Esq; Locker, Robert Dimmett; Clerks, Messrs. R. Best, J. W. Madden, J. H. Noonan, John Garby and Samuel Story, junr. Tidesman, Errol Boyd; Boatmen, Jas. Wall & W. Hays; Broker, Mr. Adam Grieve.

Health Officer, William B. Almon, Esq. M. D.; Superintendent of Quarantine, Mr. Jacob Miller.

OFFICERS OF H.M. NAVAL YARD.

Captain Superintendent, Sir THOS. USSHER, C. B. & K. C. H.	
Naval Storekeeper, J. R. Glover, Mast Shipwright, A. F. Jones, Esqrs	
1st Clerk, }	} James Ritchie,
2d Do. }	
Gate Porter.....	Mr. Thomas Mathews.

Officers of H. M. Victualling Yard.

Victualling Storekeeper.....	John R. Glover Esq.
Clock to Do.....	Mr. Duncan McQueen

Halifax Banking Company.

President, Hon H H Cogswell. Vice-President, Wm Pryor, Esqr. Directors, Hon Fnos Collins, Hon Samuel Cunard, Hon Joseph Allison, Hon James Tobin, John Clark and Martin G Black, Esqrs. Cashier, N T Hill, Esq. Clerks, Messrs. J C Wilkie, A G Fraser and Chas Wilkie. Messenger, Mr. Joseph Keefler.

Discount Days—Tuesdays and Fridays.

Hours of business--from 10 to 3 o'clock. Sundays and Holidays excepted—Notes for discount to be left the day previous, before 1 o'clock, with the Cashier.

Bank of Nova-Scotia.

President, W Lawson, Esq. Directors, Alex. Murison, Wm B Bliss, Mather B Almon, James W Johnston, L Bliss, Stephen N Binney, James B Unacke, J Leishman, W Murdoch, J Donaldson & W F Black, Esqrs. Cashier, James Forman, junr. Esq. Teller, Mr Henry Mundell. Clerk, Mr Benjamin Carlisle. Messenger, Mr J Maxwell.

Discount Days.—Tuesdays and Fridays.

Hours of business--from 10 to 3 o'clock. Notes for discount to be left with the Cashier, the day previous to the discount day.

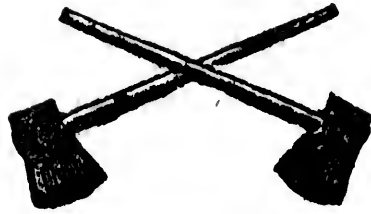
SAVINGS' BANK.

Comm'r. & Treasurer, Mr. Edw Duckett, junr. Committee for examining the Accounts, Hon H N Binney Sir R. D. George Bt. and CW Wallace, Esq.—The Bank is kept at the office of the Treasurer of the Province, in the Province Building.—Hours of attendance from 8 to 10 o'clock, every Monday morn.

Fire Wardens of the Town of Halifax.

Richard Tremain, Esq Chairman,--*John Albro, Esq* Sec'y and Treasurer. South Suburbs, *Edward Pryor, C R Fairbanks and James Tremain, Esqrs.* St Peter's Ward, *John Albro, J F. Fairbanks and James Bain, Esqrs.* St Matthew's Ward, *L Hartshorne and J A Barry, Esqrs.* St Paul's Ward, *George N Russell and W A Black, Esqrs.* County Court House Ward, *Jno Dupuy and Thomas Boggs, Esqrs.* St. John's Ward, *Hon Joseph Allison, Jno Liddle & Jno Clark, Esqrs.* North Barrack Ward, *Michl Tobin and S W Deblois, Esqrs.* North Suburbs, *Hon S Cunard, J N Shannon and Joseph Starr, Esqrs.*

Committee of the Fire Wardens appointed to manage and direct at Fires, *Richard Tremain, Thomas Boggs, John Albro. E Pryor and J Clark, Esqrs.* to direct the Fire-men.

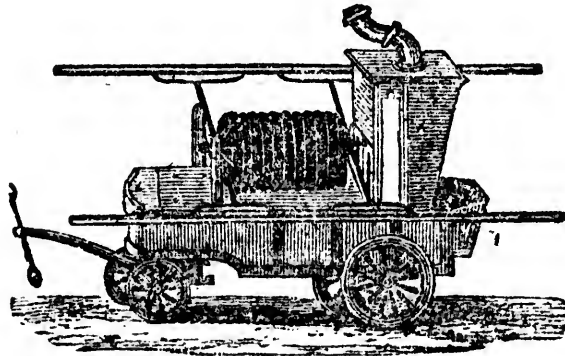


FIRE AXE-MEN.

Robert Richardson, capt; Michael Creamer, lieut. Thomas McKie, sec'y, William Johnston, Errol Boyd, John McNeal, Wm Marvin, Henry Miller, William Rose, Matthew Lowndz, James MacNut, James Grant, Patrick Mahony, Jno McPherson, Samuel George, Arch Lang, Charles Marvin, Ephraim Lawlor, George Gaul, Peter Artz.

The Fire Engine Company and Axe Fire-men are exempt from Militia duty and from serving as Jurors.

.....



FIRE ENGINE COMPANY FOR THE TOWN OF HALIFAX.

JAMES DECHMAN, senr. Captain

First Division--David Hutton, Lieut; Henry Hill, Thos Mackie, Thos Pallister, Wm J Rogers, Wm Caldwell, Timothy Conners, Wm Murray, J Mahony. II St. Andrews, Joseph Bennet, F Sturmy, William Liswell, Wm Flynn, Henry Langley, Henry G Hill, James Smithers, John Rhind, & John Pallister.

Second Division--Thos Cassedy, Lieut; Jas Carmichael, Edw Sturmy, J Drillio, Andw Crawford, Daniel McLeun.

Thos Wilson, Charles Hunter, Jeremiah Muhlig, Jno Richardson, Benj Smithers, Jas Malcolm, Wm Crawford Jno Johnson, Joseph Scriven, William Miller, Thomas Lownds, Manual Defreytas, Joseph Rolls and John Esson.

Third Division---Geo Little, Lieut; Henry Spike, Jas Thomson, R Haverstock, Saml Carten, R A Bigby, Secretary, Wm Dillen, George Boorton, Benjamin Wier, George Smithers and John Johnson, junr.

Fourth Division---Michael Byren, Lieut; Elias Cabot, Jno West, Alex Boyle, Robert Woodill, John Winters, Stephen Studley and William Valentine.—Jas Smith, Honorary member and Treasurer.

Agent for the "Protection" Marine, and "Etna" Fire Insurance Companies of Hartford, at Halifax, J. Leander Starr, Esq.

CHAMBER OF COMMERCE.

Hon. S. Cunard, President; Andrew Belcher, V. P.; S. W. Deblois; John Leander Starr, Sec & Treasurer; L. Hartshorne, V P; George P Lawson; J C Allison; J G A Creighton; W B Fairbanks; David Allison and M Tobin, junr. Esqrs.

HALIFAX MECHANIC'S INSTITUTE.

W. Grigor, Esq. M. D. President; Joseph Howe, Esq. 1st Vice President; George Young, Esq. 2nd Vice President; Mr J S Thomson, Secretary. Jas. Forman, jr Esq. Treasurer.

CHARITABLE IRISH SOCIETY.

Michael Tobin, Esq President; J L Starr, Esq. Vice President; Mr M Creamer, Secretary.

EASTERN DIVISION

Includes the Counties of Cumberland and Sydney, and Districts of Colchester and Pictou. Chief Justice of the Inferior Courts of Common Pleas, and President of the Courts of Session in this Division, William Q. Sawers, Esq.

District of Colchester, County of Halifax.

Deputy Sheriff, G R Grassie, Esq. Coroner, Nat. Masters, Esq.

Supreme Court sits at Truro, 1st Tues of June and 4th Tues of Sept. Dep. Prothby, George Dill, Esq.

Inferior Court and Sessions of the Peace, held at Truro 2nd Tues of June and 2nd Tues of July.

Thomas
McNeal,
Lownds,
McPher-
Ephraim

are ex-

.....

THE

ry Hill,
aldwell,
Andrews,
a, Henry
d, & John

michael,
McLennan.

Asst. Judges, Thomas I. Brown and R. Dickson, Esqrs.
 Justices of the Peace, John Dickson, Robert Dickson, Nat. Masters, Thos I Brown, James Flemming, Edw Blanchard, D. V Crowe, John Wier, Wm Rutherford, Alex Campbell, John S Fulton, Samuel Archibald 3d, Silas Crane, James Mahan, Duncan Black, Alex Kent, James Moore, Joseph Fulton, David B Lynds, W Cutten, jr. and Charles D McCurdy, Esqrs.

Clerk of the Peace, William Dickson, Esq.

Surrogate Judge, Jonathan Marsters, Esq. Comm'r. for taking Special Bail on Actions depd'g in the Sup. Court, and Regr. of Deeds. Geo Dil. Esq. Post-masters, Gay's River, S. Moore; Truro, Jon. Graves, Esqrs. Collector of Impost and Excise, and of Light duties, Robert Dickson, Esq. Comm'r's. of Schools, Rev John Burnyeat, Rev ——— Brown, Robert Dickson, James Flemming and Edward Blanchard, Esqrs.

District of Pictou, County of Halifax.

Deputy Sheriff, J W Harris, Esq. Coroner, J McKay, Esq.
 Supreme Court sits at Pictou last Tues of May and 3rd Tues of Sept. Dep. Proth'y. James Skinner, Esq.

Inferior Court and Sessions of the Peace, held at Pictou 3rd Tues of Jan'y and 3rd Tues. of July.

Asst. Judges, Hugh Denoon, Geo. Smith, R. Lowden and William Mortimer, Esqrs.

Justices of the Peace, Hugh Denoon, *Custos Rotulorum*; Robert Lowden, James Skinner, George Smith, John Fraser, Ab. Patterson, William Matthewson, David McLean, Robert McKay, James Carmichael, John Olding, Wm Mortimer, Geo McLeod, Henry Hatton, D Crichton, J Holmes, Ken. McLean, Adam Carr, James Fraser and Richard Smith, Esqrs. Clerk of the Peace, Esq.

Surrogate Judge, George Smith, Esq. Comm'r's. for taking Special Bail on Actions depd'g. in the Supreme Court, Hugh Denoon and James Skinner, Esqrs. Registrar of Deeds, H Denoon, Esq. Post-master, Alex P Ross, Esq. Collector of Customs; and of Impost and Excise, H Denoon, Esq. Waiter, Searcher & Warehouse-keeper, Owen Cotton, Esq. Collector of Light duties, Thomas Corbett, Esq. Harbour master, J Skinner. Health Officers, Drs. James Skinner and Joseph Chipman. Comm'r's. of Streets, Robert McKay, J Patterson, Geo Campbell and John Taylor, Esqrs. Comm'r's. of Schools, Rev Duncan Ross, Rev Charles Elliott, Rev K J McKenzie, G Smith & H Hatton, Esqrs. Agent for Lloyd's, & Sub-Agent for the Etna and Protection Insurance Companies, Jas. Dawson, Esq. Dep. Insp. Fish, A D Gordon and W Pattenger.— Fire Wardens, T Lowden, J McKay, G. Campbell, J W Harris, H Hatton, Wm Mortimer, J Treneman, J Taylor, George McKay, James Dawson, R McKay and J Purvis, Esqrs. Fire Engine Company, Captain James Creighton, Lieuts. William Corbett and A D Gordon.

COUNTY OF SYDNEY.

High Sheriff, Kenneth McDonald, Esq.—Dep. Sheriff, Wm O. Heffernan, Esq. Coroners J H Weeks and J G Peabody, Esqrs.

Supreme Court sits at Dorchester, 2d Tuesday of Sept—dep proth'y Alex McDonald, Esq M D.

Inferior Court, and Sessions of the Peace for the Upper District, hold at Dorchester, first Tuesday of May and 3d Tues of October. Asst Judges, John Cunningham and Benjamin Ogden, Esqrs.; And for the Lower district—at Guysboro' 2d Tuesday of May, and 4th Tuesday of Octr. Asst Judges, Jos Marshall and Robert Hartshorne, Esqrs.

Justices of the Peace—*Upper District*—Jno Cunningham, *Custos Rotulorum*; Alex McDonald, John McDonald, Robert N Henry, Benj Ogden, James Randall, Hugh McDonald, Jos Symonds, William C Hierbhy, George Brennan & Wm James Corbett, Esqrs.—*Lower District*, Thomas Cutler, *Custos Rotulorum*; Joseph Marshall, William Atwater, Christian Miller, Robt M Cutler, Went. Taylor, Chas Archibald, Wm McKeen, Robert Hartshorne, John Newton, David Campbell, Hugh McDonald, Joshua Maxwell, Thomas Glencross, Jno Smith, Don. Sinclair and Charles Brodie, Esqrs. Clerks of Peace, Upper dis. R N Henry; Lower dis. W O Heffernan, Esqrs.

Surrogate Judges, *Upper Dis.* Alex McDonald M D.; *Lower Dis.* W. F. DesBarres, Esqrs. Dep. Regr's. Deeds. *Upper Dis.* Jno Cunningham, *Lower Dis.* Thos Cutler, Esqrs. Commr's for taking special Bail on Actions dep'd'g in the Sup. Court—*Upper Dis.* Alex McDonald; *Lower Dis.* Went. Taylor, Esqrs.—Collector of Customs; of Impost and Excise; and of Light Duty, Duncan McColl, Esq.—Postmasters, Antigonishe, R. N. Henry; Guysboro', Robert M Cutler, Esqrs.—Commissioners of Schools, *Lower dis.* Rev Chas Weeks, Robert M Cutler, Went. Taylor, Robert Hartshorne and Duncan McColl, Esqrs. *Upper dis.* Right Rev. Bishop Fraser, Rev Thos Trotter, Rev T White, Alex McDonald and Hugh McDonald, Esqrs. Health Officer Guysboro' Dr. Wm. Cantrell.

COUNTY OF CUMBERLAND.

High Sheriff, Joshua Chandler, Esq. Coroners Jno Morse and W W. Bent Esqrs.

Supreme Court sits at Amherst 2d Tuesday of June.

Dep. Proth'y., Silas H. Morse, Esq

Inferior Court and Sessions of the Peace, held at Amherst 1st Tuesday of Jan'y and last Tuesday of June. Assistant Judges, Thos Roach, D McFarlane, R McG Dickey and Wm Baker Esqrs.

Comm'r's for taking Special Bail on Actions dep'd'g in the Sup. Court, Chas Baker, Thos Roach, S H Morse and D McFarlane, Esqrs.

Justices of the Peace, Thos Roach, Custos Rotulorum; Edward Baker, Gabriel Purdy, Danl McFarlane, Wm Baker, Gains Lewis; John Morse, George Bergman, James McNab, Stephen Oxley, Robt McG. Dickey, Jno Johnston, Wm Smith, Michael Gordon, Luther Lushy and Thos Watson Esqrs.—Clerk of the Peace, Silas C. Morse, Esqr.

Surrogate Judge and Registrar, Alex Stewart, Esq. G Registrar of Deeds, Wm Baker, Esq. Col of Customs Mich Jordon, Esq. Col's of Impost and Excise Thos Chapman and Joshua Chandler Esqrs.—Col. of Light Duties, Joshua Chandler, Esq. Post-master, Silas H. Morse, Esqr.

Commr's. of Schools, Rev R. B Wiggins, James S Morse, Alex Stewart, Daniel McFarlane and Jos. Oxley, Esqrs.

MIDDLE DIVISION

Includes the Counties of Hants, King's, Queen's and Lunenburg—Chief Justice of the Inferior Courts of Common Pleas and President of the Courts of Session in this division, Thomas C. Haliburton, Esq

COUNTY OF HANTS.

High Sheriff, Charles J Wilkins Esqr. Coroners, Nathaniel Jenkins and J Smith, Esqrs.

Supreme Court sits at Windsor last Tuesday of May, and 4th Tuesday of September. Dep Proth'y. Hugh Jenkins, Esq.

Inferior Court and Sessions of the peace, held at Windsor, 1st Tuesday of Jan'y and 1st Tues of July. Asst. Judges, Wm H Shey, Jno Elder and Benj Shillito, Esqrs

Justices of the Peace.—Thos C. Haliburton, *Custos Rotulorum*; Shubael Dimock, Wm H Shey, Jno Smith, Benjamin Dewolf, Joseph Sentell, Jacob Withrow, Jno Dimeck, Jno Elder, Richard Smith, Daniel Wier, Wm O'Brien, Jno Allison, Patrick Wright, Thos King, Benjamin Casey, Benjamin Shillito, Jno Cochran, Benjamin Smith, Saml Dennison, Jno Otis King, Richard McHaffey (son of Robert,) Francis Parker, Wm Munford, and Jno N Grant Esqrs.

Clerk of the Peace, Benjamin Dewolf, Esq.

Commrs. for taking Special Bail on Actions depd'g in the Sup. Court, Pat Wright and Hugh Jenkins, Esqrs. Reg'r. of Deeds; Col. of Imp. and Excise; and of Light duty, Asa Torrie, Esq. Col. of Customs, P Wright, Esq. Post-masters, Windsor, John Leonard; Rawdon, J Withrow, Esqrs. Commissioners of Streets, Windsor, Pat Wright and H Goudge, Esqrs; Falmouth, Charles Inglis, James Songster, Elias Payzant, Alan Young and Thomas Currie, Esqrs. Commr's of Schools, Rev W C King, Wm H Shey, Lewis M Wilkins, junr., John Allison and Benjamin Shillito, Esqrs.

COUNTY OF KING'S.

High Sheriff, Geo. Chipman, Esq. Coroners, W C Moore, Daniel Dewolf, James Allison and C E Ratchford, Esqrs.

Supreme Court sits at Kentville 1st Tuesday of May, and 3d Tuesday of Sept. Deputy Proth'y, Samuel L. Allison, Esq. Comm'rs for taking Special Bail on Actions dep'dg in the Sup. Court, Samuel L. Allison and James Ratchford, jr. Esqs.

Inferior Court and Sessions of the Peace, held at Kentville 3d Tues. of May & 2d Tues. of Nov.—Asst. Judges, Jno Chipman, Wm Campbell, Wm A. Chipman, and Jas. D. Harris, Esqrs.

Justices of the Peace. Jno Chipman, *Custos Rotulorum*; Wm Campbell, James Ratchford, Daniel Dewolf, Saml Bishop, Henry V Buskirk, Jno Wells, Shearman Dennison, Jas Dennison, Daniel Lockhart, Jas Fullerton, Jas D Harris, William Chipman, Harris Harrington, Jas N. Crane, J. W. Maynard, Caleb H Rand, Jesse Lewis, Saml Beckwith, David Whidden, Jno Morton, Elisha Dewolf Jr, W. C. Campbell, S. Chipman, James Harris, Junr, Simon Fitch, Thos Tupper, and Abraham Gesner, Esqrs. Clerk of the Peace, W H. Chipman, Esq.

Surrogate Judge W. Campbell, Esq.; Reg'rs. of Deeds for Horton, Aylesford and Cornwallis, W Campbell,; for Parrsboro' J Ratchford, jr. Esqrs.; Col's. of Customs, Cornwallis, D Whidden; Parrsboro'. R B Dickson, Esqrs. Col of Imp and Excise, D. Whidden, Esq. Post-mar's. Wolfville, E Dewolf; Kentville, J F Hutchinson; Parrsboro', Jas Ratchford, Esqrs. Comm'rs of Schools, Rev J S Clarke, Rev J M Campbell, Saml Bishop, James Allison and Caleb H Rand, Esqrs.

Health Officer at Parrsboro' Dr. James C Hume.

COUNTY OF QUEENS.

High Sheriff, Benj Knaut, Esq, Coroner, J Whitman, Esq. Supreme Court sits at Liverpool 1st Tuesday of July.—Dep. Proth'y & Comm'r. for taking Special Bail on Actions dep'dg in the Sup. Court, Jas Rogers, Esqr.

Inferior Court and Sess. of the Peace, held at Liverpool 4th Tues. of April and 4th Tues. of Oct. Asst. Judges, Joshua Newton, Joseph Freeman, Jas Dewolf & Caleb Seeley Esqrs.

Justices of the Peace, Thomas C Halliburton, Joshua Newton, *Custos Rotulorum*; Isaac Dexter, Joseph Freeman, Snow Parker, Benjamin Knaut, James Goreham, James R Dewolf, Jno Barss, Jas Dewolf, Jas Barss, Wm B Taylor, Nat Smith, John Campbell, Freeman Tupper & Whitman Freeman, Esqrs. Clerk of the Peace, James Rogers, Esqr.

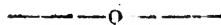
Sur. Judge; Collector of Imp. and Ex; of Light Duty; and Col. of Customs, Joshua Newton, Esq. Comptroller, John H Freeman, Esq. Reg of Deeds & Post-master, B. Knaut, Esq. Com'rs of Streets, J R Dewolf, John Roberts & Wm Sterns, Esqrs. Firewards Jas Rogers, Benj. Knaut, Paul Collins, Wm B Taylor and Stephen Collins, Esqr.

Fire Engine Men, James Barss, Capt. Wm McGill, Jno Dewolf, Wm Johnston, Wm Gold and Thos Freeman. Health Officers, Drs. A Webster & D Grieve. Comm'rs. of Schools. Rev J T Moody, Joshua Newton, Benjamin Knaut, Jno Barss and Nat Smith, Esqrs.

COUNTY OF LUNENBURG

High Sheriff, J H Kaulback, Esq. Coroner J C Rudolf Esq.
 Supreme Court sits at Lunenburg last Tuesday of June.—
 Dep. proth'y. and Comm'r. for taking Special Bail on Actions
 dep'g in the Sup Court, D. Owen, Esq.
 Inferior Court and Sess. of the Peace held at Lunenburg 2d Tues
 of April and 2d Tues. of Oct. Asst. Judges, J Pernetto, G Miller
 & E James, Esqrs.

Justices of the Peace, E James, Cus. Rot. J Pernetto, Jas
 Walker, J C Rudolf, John Evans, G Miller, W Alexander, Jno
 Heckman, Jas S Wells, Thos Godfrey, Jno Hunt, Wm Rudolf,
 Geo Mitchell, & Wm S Morris Esqrs. C. P. C B Owen Esq.
 Sur. Judge, J Pernetto, Esq. Reg'r, Geo T Solomon, Esq.
 Regr. of Deeds, F Rudolf, Esq. Col'r of Customs, A S Bruce,
 Esq. Col. of Imp. and Ex.; and of Light duty, Thos Godfrey,
 Esq. Post masters, Lunenburg, C Rudolf; Chester, George
 Mitchell, Esqrs. Comm'rs of Streets, William Rudolf, John
 Creighton and John Heckman, Esqrs. Health Officer, Doctor
 Jacobs. Comm'rs. of Schools, Rev J C Cochran, Rev. ———
 Pope, G Miller, John Heckman and John Hunt, Esqrs.



WESTERN DIVISION

Includes the Counties of Annapolis and Shelburne. Chief Jus-
 tice of the Inferior Courts of Common Pleas and President of
 the Courts of Session in this District, Thos Ritchie, Esq.

COUNTY OF ANNAPOLIS.

High Sheriff, E H Cutler, Esq. Coroners. Sil Snow, J R.
 Lovett, David Hall and Edward J Young, Esqrs

Supreme Court sits at Annapolis 2d Tuesday of June, and
 2d Tues of Sept. Dep. Proth'y & Commr. for taking Special
 Bail on Actions dep'g in the Sup. Court, Eben Cutler, Esqr.
 Inferior Court and Sessions of the Peace, held at Annapolis
 3d Tuesday of April, and 1st Tues of Nov; and at Digby 1st
 Tues of July, and 3d Tuesday of Dec. Asst. Judges, Elkanah
 Morton, Wm F Bonnell, Cereno U Jones and Thos Ritchie.
 [son of Andrew] Esqrs.

Justices of the Peace, Thomas Ritchie. *Custos Rotulorum* :
 Elkanah Morton, Phineas Lovett, John Morehouse, John M
 Sigoygne, Thomas Ritchie [Son of Andrew,] Joshua Quereau,
 Wm F Bonnell, Cereno U Jones, Charles Jones, Wm Bent,
 Saml Campbell, Saml Chesley, Anthony Hannan, S. Doucett,
 Jno Ditmars, Thos James, Geo Robinson, Benj Petter, Chas
 Budd, Colin Campbell, jr. Chas McCarthy, Elisha Payson, Jas
 Hall, James R Lovett, Jno Robinson [of Digby,] Wm Spurr,
 Wm Randall, Zebulon Phinney, Thomas Mills and Jno Bent.
 Esqrs. Clerk of the Peace, Saml Cowling, Esq.

Sur. Judge, E H Cutler, Esq. Reg'rs Deeds, Eastern Dis.
 E H Cutler; Western, dis. C Jones, Esqrs. Col's. of Cus-
 toms, Annapolis, H Goldsmith; Digby, John E Morton, Esqrs

Col's of Impost and Excise, and of Light Duty, Annapolis, H Goldsmith; Digby, Elk. Morton, Esqrs. Postm'rs. Annapolis, Samuel Cowling; Digby, W F Ronnell; Bridgetown, Thos. Spurr, Esqrs. Health Officer, Digby, Dr. ~~W. L.~~ Bent. Com'rs. of Schools, Eastern dis. Rev Edwin Gilpin, Rev Fras Whalley, H. Goldsmith, John Johnston and Thomas James, Esqrs. Western district, Rev Roger Viets, Wm F Bonnell, C U Jones, Chas M'Carthy & Charles Budd, Esqrs.

COUNTY OF SHELBURNE.

High Sheriff, John Bingay, Esq. Coroners G Bingay and J Wieser, Esqrs.

Supreme Court sits at Shelburne 2d Tues of July.—Dep. Proth'y. and Comm'r. for taking Special Bail on Actions dep'd'g in the Sup. Court, M. Huntington, Esqr.

Inferior Court and Sessions of the Peace for the dis. of Yarmouth and Argyle, held at Tuskett Village, 1st Tuesday of May, and at Yarmouth, 4th Tues. of Sept.; and for the Dis. of Shelburne, at Shelburne, 2nd Tues. May & 2nd Tuesday Sept. Asst. Judges, Dis. Yarmouth & Argyle, Saml S. Poole and Henry G. Farish, Esqrs; District of Shelburne, Gideon White, Ebenezer Crowell, Jacob V. Buskirk, T. Crowell & W B Sargeant, Esqrs.

Justices of the Peace, Dis. of Yarmouth and Argyle, Saml S Poole, Custos Rotulorum; Henry G. Farish, Jno Bingay, Gabriel Van Norden, Jacob Kelly, Benjamin Bingay, John McKinnon, David Van Norden, Abraham Lent, Jas Bond, A. V. S. Forbes, Esqrs. & Rev. Jno B Robin. Dis. of Shelburne, Gideon White, Custos Rotulorum, Jacob V Buskirk, James Lent, Ebenezer Crowell, Obadiah Wilson, Thomas Crowell, Robert Currie, John Homer & Wm Sargeant, Esqrs.

Sur. Judges, Dis. Shelburne, Gideon White; Dis. of Yarmouth & Argyle, W H Keating, Esqrs. Reg'rs of Deeds, Eastern dis. Gideon White junr.; Western dis, H G Farish, Esqrs. Postm'rs, Shelburne, Jacob Weiser; Yarmouth, H G Farish, Esqrs. Col'rs of Customs, Yarmouth, A V S Forbes; Shelburne, J V Buskirk; New Edinburgh, R Hankinson; Barrington, Jos Homer; Argyle, J McKinnon, Esqrs. Col'rs of Lap. and Ex. Yarmouth, H G Farish; Shelburne, Jacob V Buskirk; Argyle, John McKinnon; New Edinburgh, Samuel Campbell, Esqrs. Col'rs. of Light Duty, Yarmouth, Joseph Bond; Shelburne, J V Buskirk; Argyle, John McKinnon, Esqrs. Health Officers, Shelburne, Dr. Alex Jamieson,—Barrington, Dr. Thomas Geddes; from Yarmouth, including that Port to Western side of Jebogue harbour, Dr H G Farish, Eastern side of Jebogue harbour, including Tuskett and Argyle, Dr. Thos I Wilson. Comu'rs. of Schools, District of Shelburne, Rev Dr Rowland, Thomas Crowell, John Homer, W Robertson & Joshua Snow, Esqrs. Dis. Yarmouth, Rev T. Grantham, Rev Mr Morine, Saml S Poole, Henry G Farish and James Lent, junr. Esqrs.

COUNTY OF CAPE BRETON.

Chief Justice of the Inferior Courts of Com. Pleas, and Pres. of the Courts of Sessions in this County, John G Marshall, Esq. High Sheriff, John Fuller Esq. — Coroners, Jno Smith, Joseph Noad, and Jno McDonald, Esqrs

Supreme Court sits at Sydney, last Tuesday of August, and at Arichat on the 1st Tues of Sept. Prothonotary for the County C. E. Leonard, Esq. Depy. Prothly's, Arichat, A, Madden : Mabou J. L. Tremain Esqrs.

Inferior Court and Sessions of the Peace for the Nethern dis. held at Sydaey 2nd Tues of March, and 4th Tues of Oct; for the Southern dis. at Arichat, 21 Tues. of April and 2d Tues of Nov; and for the Western dis. at Port Hood 3d Tues April and 3d Tues. of Nov: Asst. Judges, — N. E. district — Thos Crawley and Wm Oasley, Esqrs. — Southern district. Clement Hubert, John Jean and Peter DeCarteret, Esqrs. — Northwestern district, — Jno Watts and Wm McKeen, Esqrs.

Justices of the Peace, John Geo Marshall, Custos Rotologram — N. E. dis. Archbd Dodd, Thos Crawley, Richd Gibbons, Chas E. Leonard, Peter H Clarke, Wm Gammell, James Duffus, Norman McLeod, Robt Gammell, Jacob S Ingraham, Jno McKinnon, Richd Smith, Jno Melony, Alex Munro, C Barrington, Charles McAlpine. W. R. Bown and Wm Ousley, Esqrs. Southern dis. Clement Hubert, Chas McNab, Andw Madden, Thos E Chandler, Nicholas H Martin, Jno Jean, John Janvrin, Peter DeCarteret, Wm Crichton, Morgan Doyle, Dougald B McNab, Jno Luce and Law Kavanagh, Esqrs. — N. E. district, Wm Watts, John Campbell, Wm McKeen, Nicholas Paint, John L. Tremain, Izad Hart, Jas Hawley, Hen. Taylor, Nathaniel Clough, Kenneth Chisholm, Murdo McCaskill, Andw McDonald and H. Skinner Esqrs.

Surrogate Judges, Wm. C. Delaney Esqr of Arichat, for the Southern Dis. and J. L. Tremain Esq. of Port Hood, for the N. W. dis. Reg's of Deeds, Western dis. J. L. Tremain; Southern, J. Turnbull; Northern dis. C. R. Ward, Esqrs. — Collectors of Customs, Sydney, J. W. Benn; Bridgeport, Hector Leonard, Esqrs. Comptroller, C. E. Leonard, Esq. Tide Surveyor, Chas Barrington, Esq. Col's. of Impost and Excise, and of Light Duty, Sydney, Chas E. Leonard; Port Hood, Jno L. Tremain; Arichat, J. Turnbull Esqrs. Postmasters, Sydney, Jos Noad; Arichat, Jno Fuller; Margaree, H Taylor; Judique, A. McDonald, Plaister Cove, Nat Clough, Esqrs. Sur. Gen. of Lands, T. Crawley, Esq; Com. of Crown Lands, H. Crawley, Esq. Health Officers, Arichat, Dr Madden; Port Hood, Dr Currie; Sydney, Dr. T. I. Jean; Gut of Canso, Dr. Noble; Bridgeport, Dr. W. Haire. Cours of Schools — N. E. dis. Rev. Chas Ingles, Rev Geo McKeagney, J. G. Marshall, Thos Crawley and Chas E. Leonard, Esqrs; Southern dis. Rev — Shaw, Rev — Betvin, Dr Madden, Thomas E Chandler and — Creighton, Esqrs; N. W. dis. Rev. — Lawlor, Wm Watts, J. L. Tremain, John McKeen and Nat Clough, Esqrs.

STAFF OF THE ARMY:

In Nova-Scotia under the command of Major General Sir Archibald Campbell, Bt. G. C. B. Lt. Governor of New-Brunswick.

Military Secretary, Capt P. Maitland 74th F.; Deputy Adj. Genl. Lt Col. H B Harris, h.p. 86th F.; Dep. Qr.Mr. Gen. Lt. Col. H.G. Broke; Maj. of Brigade, Maj. J. Bazalgette, h.p unatt.; Insp. Field Officers of Militia, Lt. Cols. R. R. Loring; *Wm. Marshall, & P. Grieve; Dep Com.Gen. Esq; Asst.Com Genl. W H Robinson, Esq.; Dep Asst.Com.Genls. James Slade. Oliver Goldsmith, Wm. Low, Chas. Williams & Richard Inglis, Esqrs. Surgeon to the Forces, Colin Allan, Esq.M.D; Asst. Surgeons, S.M. Hadaway, Steph.Lawson, & J.L.Hartwell, Esqrs; Apothecary to the Forces, Jno Carter, Esq.

Garrison of Halifax— Commandant, Lt col. H B Harris, Dep Qr Mr Genl.; Town Major, Lt.J. MacColla; Bar.Master, Jas Blair, Esq.; Chaplain, Rev. J. T. Twining, D. D.; Wind- sor, Barrack Master, A.McDougall, Esq. Chaplain, Rev. W. C. King, A. M. Annapolis.. Barrack Master, Joseph Norman, Esq. Sydney, C. B. Barrack Master, S. Rigby, Esq.— Town Adj. Lt. Sutherland, 96th Regt.

Engineer Department.

Lieut. Col. Rich. Boteler, commanding Engineer. Capts. Loyalty Peake, A Marshall, Chas. Rivers. Lieutenants C. McKenzie, S H Wentworth. Clerk of the works, R Creed. Clerks, Wm Rogers. Thos Goudge, G. Creed and John Barron. Edwd Pryor, Master Carpenter. John McKenzie, Foreman. Wm McDowall, Master Mason; W Gossip, Master Smith; P Dowling, Office keeper and Messenger.

Officers of H. M. Ordnance.

Major Kirby, Comd. Roy. Artillery; Lt Col. Boteler, Comd. Roy. Engineers; J W Tapp, Esq. Ordnance Storekeeper; Hen Ince, Esq dep storekeeper; C H Fife, first clerk; J Forester, 2d do.; W H Tapp, 3d do. . . . I Rigby, J Barron, and H P Dixon, asst. clerks. C N Fife, Foreman of Carpenters. J Plummer, Armourer. W Dalling; Overseer of Labourers. J Anderson, gate porter.

OFFICERS OF THE ARMY.

Lt Col. H. B. HARRIS, Dep. Qr. Mr. Genl. Commandant.			
<i>Royal Artillery.</i>	<i>Lieuts.</i>	<i>Royal Engi.</i>	<i>Royal Staff</i>
"Waterloo"	B O Lyster, <i>qm.</i>	<i>neers.</i>	<i>Corps.</i>
<i>Lt Col</i>	F A Griffiths, <i>ad.</i>	Lt Col R Boteler	"Egypt"
	Robt Robertson	Capt	"Peninsula"
<i>Majors</i>	Robt Pigot	Loyalty Peake	"Waterloo"
S epl.en Kirby	W R Cleeve	A Marshall	<i>Capt</i>
Fred. Arabin	T G Marlay	Lieuts.	* B Jackson
<i>Capt</i>	<i>Surg.</i>	C MacKenzie	<i>Lieut</i>
J W Spellen	Blue—facings	S H Wentworth	F Shearman
Mark Evans	red; lace gold,	Scarlet—facings	Facings blue,
Henry Stanway		blue velvet, l'ce gold.	lace silver

	J Perry Liston	Geo Anderson	<i>Captains</i>
8th (or King's)	Jno Hilton	M R Campbell	Tho E Kelly
<i>Regt.</i>	Pay H P Hill, <i>cpt</i>	John Lee	W Warren
The White Horse.	Adj S Whitty, <i>lt</i>	P W Taylor	* G Simmons
"Egypt"	Q M S Brodrick	W P Lewes	H Stewart
"Martinique"	Sur J H Cardiffe	<i>Pay</i>	Jas Maister
"Niagara"	MD	Adj J Telford, <i>lt</i>	Hon J St V Saumarez
<i>Colonel</i>	A S J K Adams	Q m J Murchison	* John Fry
H Bayly, <i>lt gen</i>	P Fraser	Surg J Shorland	J S Cameron
<i>lt Col</i>	Facings blue	A S A W Murray	Wm Sullivan
* Hon G Cathcart	96th REGT,	ray	J A Henderson
<i>Majors</i>	<i>Colonel</i>	Mich Nugent	<i>1st Lts</i>
T Ger Ball	Sir Lionel Smith	Facings yellow.	A MacLachlan
Jno S Powell	K C B, <i>maj gen</i>		W S R Norcott
<i>Capt</i>	<i>lt Col</i>	<i>1st BATT.</i>	Robt Walpole
J Fitzgerald, <i>m</i>	* J Fullerton, C B	<i>Rifle Brigade.</i>	Ho. Shirley
D Vans Machen	and KH	"Copenhagen"	Cha. F Napier
Simcoe Baynes	<i>Majors</i>	"Monte Video"	W S Tollemacle
J H Meiland	Gen White <i>lt col</i>	"Roleia"	Roynon Jones
T Hart Davies	A Cairncross	"Vimiera"	John Rooper
Alex Dirom	<i>Captains</i>	"Corunna"	R S Smith
C S Malet	Wm Hulme, <i>m</i>	"Busaco"	Jro H Esten
Cha Co kran	Rich Gethin	"Barrosa"	<i>2d lts</i>
H W Harley	E E Hill, <i>m</i>	"Fuentes d'Onor"	R H FitzHerbert
Tho Kenyon	C E Cumberland	"Ciudad Rodrigo"	R W D Flamstead
<i>Lts</i>	Peter Skeape	"Badajoz"	<i>dep. pm. ens</i>
Alex Bourke	B H Cumberland	"Salamanca"	R Wilbraham, <i>ad</i>
T R Thompson	Jno A d d o	"Vittoria"	Alex Monro
Wm Calder	T M Wilton	"Nivelle"	K W Young
D Gardiner	Robt Bush	"Nive"	R Petley
Jas Byron	Jas Stewart	"Othes"	A Stewart
Wm Senhouse	<i>Lieuts</i>	"Toulouse"	G K Carr
Jao Longfield	L F Jones	"Peninsula"	G P Malcolm
E Hud Clarke	Wm Kidman	"Waterloo."	W H Frankland
Wm R Lucas	E Sutherland,	<i>Colonel in chief</i>	<i>Pay W Holden</i>
Wm Chearnley	A Robertson, <i>d p</i>	* Arthur, <i>Duke</i>	<i>capt</i>
Irv S Whitty, <i>adj</i>	A McKenzie	of Wellington,	Adj R Wilbraham, <i>2nd lt.</i>
Thos Egar	Jos Telford <i>adj</i>	K G C C B &	Q M * Wm Hill
Ralph Cheney	Thos Abbott	G C H, <i>field mar</i>	Surg. T H Ridgway, <i>M D</i>
Jas Pringle	P F de Meuron	<i>Col comm.</i>	A S E G Lloyd
<i>Ensigns</i>	J W A Wray	* Sir A F Bar-	M White, <i>M D</i>
H W Roper	Henry Nixon	nard, <i>K C B & K</i>	W Woodforde
Walter Lay	R MacKenzie	<i>C H. m g.</i>	Regimentals
Walter Ogilvy	Jas Clyde	<i>lt Col</i>	green — facings
Hen Lomax	R H Bunbury	<i>lt Col</i>	black.
E H Greathed	<i>Ensigns</i>	* W Eccles, <i>K H</i>	
	R S Murray	<i>Majors</i>	
	Edw Barclay	* A Stewart, <i>K H</i>	
	E Hathaway	* J C Hope	

This mark (*) prefixed to the names of Officers denote their having been at Waterloo. The words subscribed to the titles of Regiments as "Peninsula," "Waterloo," &c. denote the honorary distinctions permitted to be borne on their colours and appointments, in commemoration of their services.

MILITIA OF NOVA-SCOTIA.

His Honor, Lieut. Colonel, the Honble. Thomas
Nicholson Jeffery, Commander in Chief.

Aide de Camp to the Com'r. in Chief, *Lt. Col. Sir R. D George, Bt.*
Insp. Field Officers, *Lieut. Col's R R Loring, *W Marshall and P*
Grievs; Brigade Major to the Western Dis. Lt. Col. A V S Forbes; Adjutant
Genl. Lieut. Col. John McCoila; Qr. Mr. Genl Lt. Col Edward
Wallace. Deputy Quarter Master General, Captain S. Binney, 1st
Halifax Regiment. Judge Advocate Gen. Hon S B Robie, LL.D.

Volunteer Artillery.

Lt Col. Richard Tremain. Major, James Tremain.

1st Company.... *Capt. James Cogswell. 1st Lieuts. Joshua Lee.*
and Richard Tremain, jr.

2d Company.... *Capt..... 1st Lt.....*

2d Lt..... *Surgeon, Matthias Hoffman,*

Blue.... *facings red—lace gold*

1st Halifax Re-
giment.

Lt. Col,

G N Russell

Majors

A Richardson,

James McNab

Captains

Wm Pryor, jr

John Slayter, *adjt*

Jas Black

Jas G Boggs

Thos Lydiard

Chas De Wolfe

Thos Adams

Law O' C. Doyle

S Binney

W A Fliieger

1st Lts.

A B Richardson

F Stevens

Robt Romans

Saml Lydiard

Thos Kinnear

Elisha De Wolfe

Wm Emerson

John Robertson

Edw Binney

Jno Romans

Thos N Jeffery, jr

Edw Lawson

2d Lts

EG Fife

S Campell

Arch Sinclair

Andw McKinley

W G Anderson

Andw Uniacke.

S S B Smith

Adjt J Slayter, *cpt*

Q M G T Fillis

Surg. A Wallace

A. S. W Grigor

Blue.... *facings*

red—lace gold

2d Halifax Re-

giment.

Lt Col

Hon. S. Cunard

Majors

Chas J Hill

W M Deblois

Capt

J A Barry, *adjt*

G B Creighton

A G Fraser

M Tobin, jr

Thos Tobin

Jno Cunard

J H Clark

John E Starr

Henry Pryor

H Mignowitz

Edw Cunard jr

1st Lts

Jas A Moody

Geo H Starr

Thos A Bauer

Jos Scutell

Thos Bartlett

Edw Scaife

F B LeCain

2d Lts

Chas Wilkie

Geo Debois

J A Bauer

Adjt J A Barry *cpt*

Q M J Dupuy

Surg W B Almon

M. D. -

A Sg C Cogswell

Scarlet—*facings*

blue—lace gold

3d Hx. Regt.

Lt Col

J Leander Starr

Majors

John E Fairbanks

Edw Cunard

Capt

H Y Mott

S W Albro

Edw H Lowe

J M Chamberlain

EG W Green-

wood, *adj*

Daniel Starr

W J Starr

Jno Harvie

C H Belcher, *qm*

R D Clarke

Jno Leslie

1st Lts

W Hall

G G Lawton

C Marks

G P Van Buskirk

E Duckett jr, *pm*

T Kenny

J Kennedy

H Leslie

J A Moren

2d Lts

Jno Gammon

Martin Nisforth

Hen Gorham

Adam Reid

J F Cox

W J P Mattocks

J A Findlay

Went. Parker

Adjt EG W Greca-

wood, *capt*

Q. M. C. H. Belcher,

capt

Pay E Duckett, *lt*

ptains
Kelly
arren
nmons
wart
aister
StV Sau-
z
Fry
ameron
Sullivan
enderson
Lt
chlan
R Norcot
Walpole
hirley
Napier
Tollemacl e
on Jones
Rooper
Smith
I Esten
Lt
FitzHerbert
D Flamstead
pm. ens
Abraham, ad
Monro
Young
etley
Stewart
Carr
Malcolm
Frankland
W Holden
apt
R Wilbra-
n, 2nd Lt.
*Wm Hill
g. T. H. Ridg-
ay, M D
EG Lloyd
White, M D
Woodforde
imentals
en — facings
ck.
e their having
s of Regiments
ry distinctions
in commemo-

<i>Surg</i> S Head, ML	5th Halifax Regt	Jas Dunlap	Robt Spencer
AS RL Gray	<i>Lt Col</i>	E Parker	<i>2d Lts</i>
Green—facings	II A Gladwin	Jno L Fisher	D V Crow
red—lace gold	<i>Major</i>	MT Smith	Alex Blair
	T R Grassie	Jno Johnson	Sam Waugh
	<i>Cpts.</i>	Wm Flemming	M Waugh
4th Hr. Regt.		<i>2d Lts</i>	Edw Langille
<i>Lt Col</i> J Albro	ATaylor	Wm McCulley	D V Crow
<i>Majors</i>	P Ogilvie	Jno Gammill,	Chas DM Curdy
WA Black	A Dunbrack	Jas Pollock	Jno McKay
Edw Pryor jr	John Watson	Geo S Flemming	J M L Dickson
<i>Cpts</i>	G R Grassie, adj	Jno Tupper	Robt Corbett
F Dauphiney	David Fletcher	David Page	Jas M Spencer
John Parker	<i>Ist Lts</i>	Geo S Rutherford	Wm Fletcher
Wm M Allan	S Breedin	Wm McNutt	Robt Murray
Thos Pyke	Wm Anderson	Sam Creelman	H M Laughlan
Jas Hearne	J Brown	Adj W C Eaton,	Pat Marsh
Peter P w er	A Keat	<i>capt</i>	Wm Cutten
W Donaldson	RA Logan, q m	QM Alex Knight	Jno Blair 3d
Azor Stevens	Alex Keith	Sg W B Lynds	Steph Linten
H Yeomans, jr	<i>2d Lts</i>	A S. BenjPage	Jas Barnhill
Jno Dauphiney	Wm Gullid		J T Dickson
A Scott adjt	John Linsie	<i>2d B ATT.</i>	Wm Flemming
Edw Allison	A Taylor jr	<i>Lt Col</i> R Dickson	Adj Edw Dck-
Nepean Clarke	J T Bishop	<i>Majors</i>	son, <i>capt</i>
P J Holland	J E Miller	Thos I Brown	<i>Surg</i> Chas Head
<i>Ist Lts</i>	How. Blades	A Campbell	Q m W Cutten
W B Hamilton	Wm Muir	Jas Flemming	
Benj E Black	W Dowling	<i>Cpts</i>	
B C Brehm	Adj G Grassie, cpt	Jas Dickson	Pictou Regi-
Angus Fraser	Q M R Logan lt	Jno Wier	<i>ments.</i>
Jno Adams	<i>Surg</i> E Carritt	John Crow	<i>Ist BATT.</i>
H J Creighton		R McLelland	<i>Lt Col</i>
Wm Vickers	Colchester Rgts	R Spencer	Geo Smith
Chas M Cleary	<i>Ist BATT</i>	A Thompson	<i>major</i>
Chas Lawson	<i>Lt Col</i>	Ed Dickson, adj	Robt McKay
<i>2d Lts</i>	James Kent	Robt B Dickson	<i>Cpts</i>
Jno Martin	<i>majors</i>	Jas D Baird	Geo McDonald
J Buchannan	Alex Archibald	Alex Vance	John Patterson
Pat Purcell	Jas D Blair	<i>Ist Lts</i>	Wm Corbett
E Ryan	<i>Cpts</i>	Rufus McNutt	John Gordon
James Saul	Jos Fulton	D Dewar	Wm Mortimer
C Hamilton	John Gammill	Wm Baxter	D Cameron
Geo Leppart	W C Eaton, adj	Alex Conkey	Abm Patterson
Geo Grono	Geo Corbett	Thos Corbett	Anthony Smith
Wm J Carritt	Wm Blair,	I Urquhart	Geo Campbell
Edw Albro	Wm Phillips	II Munro	Saml Archibald
Geo Munro	Andw Yuill	Jno McGrath	Mich McCulloch
Jas Richardson	<i>Ist Lts</i>	Wm Vance	<i>Ist Lts</i>
Chas Gray	Jas Rutherford	Jac. Marsh	Wm Clark
Adj A Scott, cpt	S Archibald	Geo Ross	R McDonald
Qm P Hosterman	Wm Logan	J Archibald	David Davieca
<i>Surg</i> J Stirling		Jas Wilson	Jas Dawson
A S Wm Owen			

Mat Langille
 Jno Taylor
 Chas Patterson
 Don Fraser
 Colin McKenzie
1st Lts
 H Douglass
 F McDonald
 Jas Crichton
 David Ross
 Thos M' Cabe
 Jas Perin
 Geo Grant
 Jas McGill
 Jno Graham
 Jas Robertson
 Jno Campbell
 Jno Lorrain
 Thos Taylor
 Jno McLeod
adj Capt M' Donald
 Q M H Hatton
 2d BATT.
Lt Col
 J Carmichael
majors
 D Murray
 John Olding
Cpts
 T McPherson
 Simon McKay
 D McDonald
 Thos Munro
 Simon Fraser
 D Mc Lennan
 Don McDonald
 Jo'm Smith
 A McDonald
 Fod'k McKay
 John Finlayson
1st Lts
 W Jas Corbett
 Hugh Fraser
 Alex Fraser
 Don Munro
 Alex McDonald
 Don McDonald
 Jacob Olding
 Don Robertson
 Wm Chisholm

Wm Fraser
 Robt Walker
2d Lts
 Paul Foster
 Wm Fraser
 John Fraser
 Peter Ross
 Hec McLean
 Pet Grant
 Jas Fraser
 Ang McDonald
 Thos Copeland
 Don McDougal
 Don Sutherland
 Alex Grant
adj J Holmes,
 Q M A Fraser
 Sg D Finlayson
 County of Sydney Regiments.
1st BATT.
Lt col Jno Munro
major
 Jno G Peabody
Cpts
 JD Cunningham
 Ang McDonald
 H McLennan
 Wm Hierlihy
 James Wilkie
 A D Harrington
 GA Forrestall
1st Lts
 Alex McDonald
 Allan McDonald
 Jas A Ogden
 Jas Thompson
 Geo Brennan
 Wm J Corbett
2d Lts
 Alex Campbell
 Zeph Williams
 Alex Thompson
 Colin Chisholm
 Jas Ross
 Hugh McDonald
 Jno Corbett
 Arch McDonald
adj A M Chisholm, lt
 Q m J Forrestall

Sg A McDonald
 2d BATT.
Lt col RM Cutler
major
 Isaac Wyld
cpts
 J K McKeen
 Wm Heffernan
 D Atwater
 Jno Soutir
 John Grant
 C Archibald
 Jas Lyle
 Edw Morris
 Wm McKeen
 Robt Boles
adj
 Jno Archibald
 Wm Lynch
1st Lts
 Jas Tory, jr
 Wm Bedford
 Jos Maxwell
 M Taylor
 Hugh McDonald
 Wm Sinclair
 Thos Peart
 Wm Stropel
 Alex Martin
 Jno Hudson
2d Lts
 Wm Hart
 Jno Newton, jr
 Jno Stewart
 Spin Whitman
 Jno Kennedy
 Chas Bromley
 E J Cunningham
 Wm Simpson jr
 Wm Hadley
 Edw Frenchville
 Jas Marshall
 Hall Foster
 Iry Pride
 Aaron McKinly
 Da Martin
 Jno Jamison
 Jno Mitell
Adj Robt Boles
capt
 Q m Jno Jost
 Sg W Cantrill

3rd BATT.
lt, Col
 Robt N Henry
major
 Joseph Symonds
Cpts
 Jos Jerroir
 Jas Randall
 Jno McMillan
 Elisha M Randall
 Don McDonald
 Don McPhee
 Allan Cameron
1st Lts
 Luke Jerroir
 Hugh McDonald
 Don McDonald
 Don McDonald
 Alex Cameron
 Don McKenzie
 John Mason
2d Lts
 Jno Fraser
 Cel Doiront
 Rich Connors
 Angus Kennedy
 Benj Heany
 Hugh McDonald
 Hugh McGregor
 Wm A Henry
 Jno Sutherland
Adj Jno McDonald
 Cumberland Regiment.
Lt col Thos Reach
majors
 R McG Dickey
 Geo King
cpts
 Wm Chapman
 T Chapman, *adj*
 Henry Purdy
 H Purdy 2d
 Dan King
 Jas Roberts
 Jos Black
 Thos Jogen
 Wm Fowler
 Gaus Lewis
 Anth Taylor

Josh Hustis <i>1st lts</i>	Edw Bennett	Jacob Withrow	Jno Wells <i>Cpts</i>
G Lawrence	Edw McLatchy	Jas Gilvie	Jno Morton
Saml Purdy	Jas Fitzmaurice	J J O'Brien	Jos Crane
R Cormo	Pat Walker <i>2d lts</i>	<i>Adj</i> J Withrow <i>capt</i>	A Beckwith, <i>adj</i>
W M'Nab	Wm Palmer	<i>Q m</i> Jas Grant	T Barnaby
B Chapman	Jno Jenkins, jr	<i>Sg</i> F C Pike	Jona Crane
Jos Morse	Thos Tonge	<i>3d. BATT.</i>	N Woodworth
Brown Pipes	Robert Hill	<i>lt Col</i>	L V Buskirk
B Stevens	Nathan Taylor	Daniel Wier	Saml Chipman
Amos Eaton	Robt Walker	<i>Major</i>	J T Allison
Jno Rushton	Jno Payzant	<i>Cpts.</i>	John Belcher
H Chapman	Jos Davidson	Elisha Sandford	W C Campbell
Jno Farlin <i>2d lts</i>	Peter Jadis	Ich. Dimock	O Cogswell <i>1st lts</i>
Josh Bedee	John Parker	Fras Parker	Thos Welton
Jno Dothen	<i>Adj</i> J Songster, <i>capt</i>	Jno Cochran	Judah Wells
Ths Chapman, <i>2d</i>	<i>Q M T</i> O'Brien	Jas Sterling	J C Magee
Ezra Bent	<i>Sg</i> Jos Wiley	Geo Brightman	Wm Pearce
Jas Cotes	<i>2d BATT.</i>	Stephen Wier	D Burbidge
Tim Weatherby	<i>Lt col</i> Rich Smith	<i>1st. Lts.</i>	Saml Sharpe
J G Purdy	<i>major</i>	Felix Cochran	John Prescott
Dan Pugsley	Benj Smith	Francis Harvie	J H Allison
Gilbert Seamans	<i>Cpts</i>	Jno Lockhart	Jer Tupper
Martin Bent jr	J Withrow <i>adj</i>	Anthy Shaw jr	E Burbidge
Thos Smith	Alex McPhee	Arch. Smith jr	T B Campbell
Jacob Ackerly	Edw Murphey	Harris. Dimock	Hen Gisner jr
<i>adj</i> T Chapman <i>capt</i>	Jno C Withrow	Thos Allen	J F Hutchinson
<i>Surg</i> E Purdy	John Grant	<i>2nd Lts</i>	Rich Starr
<i>County Hants</i>	Dqn Grant	Nich. Mosher	Saml Lowden
<i>Regiments.</i>	Jas Densmore	Geo. E Lavers	Wm H Chipman <i>2d lts</i>
<i>1st BATT.</i>	C Putnam	Mich Salter, jr.	Wm Starr
<i>lt Col</i>	Jno Woodworth	C W Rathburn	Ben Donaldson
W H Shey	Wm Knowles <i>1st lts</i>	Jno Mumford	Wm Miller, jr
<i>major</i>	Alex Ferguson	Job. Harvie	David Whidden
N Jenkins	John Sterling	Jas Mosher	Dan M Moore
<i>cpts</i>	Hy Blois	Wm Fish	Jno E Cogswell
Wm S Church	J J Black burn	T F Wier, <i>adj</i>	Seth Burges
Jon M Smith	Wm G Withrow	Mich Sandford	Saml Cox
Rich McHaffey	Wm Withrow	Job Harris	H L Dickey
J Songster, <i>adj</i>	Jas E Nelson	<i>Adj.</i> T. F. Wier	Jas Bent
Elias Payzant	Mich Terhune	<i>Q.M.D.</i> Cochran	Luther Durling
C Curren	Philip Densmore	<i>King's County</i>	Jas Lockwood
H Goudge	<i>2d lts</i>	<i>Regiments.</i>	Mat Fisher
Saml Palmer	Sam Meek	<i>1st BATT.</i>	Jos Chase
R McHaffey	Evan McPhee	<i>lt Col</i>	Geo Lockwood
<i>1st lts</i>	Arch Cox	Henry Gisner	Jas Lockwood
T McLatchy	Caleb Burges	<i>majors</i>	<i>Adj</i> A Beckwith <i>capt</i>
E Carver	Jno McDougall	W C Moore	<i>Qm</i> G Lockwood
Jno Otis King	Hy Miillar		<i>Sg</i>

ells
 apts
 lorton
 rane
 kwith,adj
 naby
 Crane
 podworth
 Buskirk
 Chipman
 Allison
 Belcher
 Canpbell
 gswell
 1st lts
 Welton
 Wells
 Magee
 Pearce
 urbidge
 Sharpe
 Prescott
 Allison
 Tupper
 urbidge
 Campbell
 Gisner jr
 Hutchinson
 Starr
 Lowden
 H Chipman
 2d lts
 Starr
 Donaldson
 Miller, jr
 vid Whidden
 M Moore
 E Cogswell
 h Burges
 ml Cox
 L Dickey
 Bent
 Durling
 Lockwood
 at Fisher
 Chase
 Lockwood
 Lockwood
 A Beckwith
 capt
 G Lockwood
 g

2d BATT.
Lt col
 S Dennison
major
 J N Crane
Cpts
 Chas Brown
 Eben Bishop
 Enoch Forsyth
 Jno Fuller
 E Forsyth
 J Johnston
 D Rathburn
 C H Rand *adj*
 C Randall
1st lts
 S Avery, jr
 P M Benjamin
 Elijah Fowler
 Jas Bragg
 Geo Terry
 A Bishop
 Dan S Dennison
 Eliphilet Fuller
2d lts
 S Parminster
 Jas Woodman
 Chas H Brown
 Jas T Davidson
 Wm C Dennison
 Jacob Liamans
 Thos A Caldwell
 Edw J Bishop
AdjCHRand,cpt
 Q M T A S De-
 wolf
 Sg W Webster

Parrsborough
Corps
lt Col
 Jas Ratchford jr.
major
 Jesse Lewis
Cpts
 Oman Lewis
 A Thompson
 CERatchford*adj*
 B Fullerton
 Robt Dewis
1st lts
 Eben Kerr

Wm Marsh,
 Danl Dickenson
 Wm H Dewolf
 Jas Fullerton
2d lts
 Edw Morrison
 John Petis
 J Fulmore *qm*
 Jos Cox
 A F Ratchford
 Chas W Baker
 Jno T Smith
adj C E Ratch-
ford, capt
 Q M J Fulmore *lt*
 Sg A Gisner

East Annapolis
County Regts.
1st BATT.
lt Col
 Lt Col T Ritchie
Major

Cpts
 E Thorne
 Wm Davis
 G Robinson
 S Cowling
 E Whitman
 Abner Troop
 Wm Saunders
 Step Thorne
 Robt Spurr
 Sam McCormack
 Hen Gates
1st lts
 Jacob Bogart
 Wm Harris
 S Parker
 S Chipman
 A Fowler
 Edw Hinkle
 Isaac Ditmars
 Hen Gisner
 Jas LeCain
 Jno Hicks
2d lts
 Jon Woodberry
 J H Ditmars
 Weston Hall

Geo Barteaux
 Jno Kennedy
 Constant Morse
 Jas Wade
Adj Geo Robert-
son, capt
 Q m Jas Gray

 2d BATT.
lt Col

majors
 Jno Delancy
 C Shafner

Cpts
 Foster Bolsor
 E Phinney
 Arch Hicks
 H Parker
 J Armstrong
 Robt Stone, *adj*
 Seth Leonard
 Chris Banks
 Jno Fritz
1st lts
 Jno Dodge
 Zeb Phinney
 Jas Gates
 Wm Banks
 Geo Fitch
 C Marshall
 Steph Nicholls
2d lts
 Jno Smith
 Jas Hall
 H McGee
 Jno Banks
 Jno Shaffner
 Jas Charlton
 Geo Brown
 Phin Bent
 Saml B Chipman
 Felix Mc Neal
 Alfred Parker
 Saml Starritt
 Sam Marie jr
 Pet Delancy
 Chas. Barteaux
Adj R Stone, cpt
 Q m Jno Ross

Sg J V Burin

West Annapolis
Co'y Regts.
1st BATT.
lt Col
 W F Bonnell
major
 Wm Muir
Cpts
 J Timpany
 T H Ruggles
 D Rutherford
 Edw Morgan
 J E Morton, *adj*
 B McConnell
 C Budd
1st lts
 Hen Stewart
 Chas C Moody
 Israel L Bent
 Jos Bancroft
 M R Hutchinson
2d lts
 Alpheus Jones
 Jones Morehouse
 J H Fitz Randolph
 R Journeay
 Isaac Morehouse
 Jonas Keen
 Israel Outhouse
 Jno Haynes
 H E Payson
 C S R Crowley
 Jno Viets
 Botsford Viets
adj E Morton cpt
 Q m W Taylor
 Sg J W Light-
 foot

 2d BATT.
lt Col
 S Doucett
major
 Saml Campbell
Cpts
 H Barr *adj*
 Saml White
 Jos Terrio
 F A Robichau
 Josiah Porter
 Jnc Holden

Jos White	2d BATT.	1st lts	Queen's County
Geo Taylor	<i>lt Col</i>	Jos Shaw	<i>Regiment.</i>
1st lts	Abraham Leat	Jno Pattin	<i>lt col</i>
Jos Commo	<i>major</i>	Z Churchill	Jos Freeman
J Parry	J McKinnon	Jas Allen	<i>majors</i>
Jno Terrio	<i>Cpts</i>	R Robins	J R Dewolf
Chas Boarnuf	D V Norden, <i>adj</i>	G Bond	J Whitman
B Robichau	Jas Hatfield	M Shaw	<i>Cpts</i>
Saml Morehouse	W Whitehouse	A Raymond	J Roberts
2d lts	J J D'Entremont	2d lts	Jon Dewolf
Benj White	J Servan	J Cann	Wm B Taylor
Caprean Martin	M Amero	J Hilton	John Campbell
Sol. Robichau	D Bodreau	D Gowen	W Freeman, <i>adj</i>
Ciriac Belivo	Theo K Frost	J Crosby	Jas Morton
Benonie White	1st lts	C Lewis	Mat Parks
Jas Amero	John Williams	Stayley Brown	Free Tupper
Gilbert Tucker	Jno Hatfield	Jos Stoneman	Jno L Darrow
<i>Adj</i> H Barr, <i>capt</i>	S D'Entremont	H Chipman	Nat Freeman
<i>Q m</i> H Barr, jr	P D'Entremont	H Huntingdon	1st lts
<i>Sg</i> Hen. Ruggle.	Ceril Porter	Edw Huestis	T Freeman
Shelburne Re-	Sil Porter	J Ultey	Wm Irwin
giments.	M Jeffery	Geo Trefoy	John McViker
1st BATT.	Jno Rider	Andw Lovett	Sam Freeman
<i>lt Col</i>	2d lts	<i>adj</i> G Bingay, <i>cpt</i>	Thos P Calkin
J V Buskirk	C Blanvelt	<i>Q m</i> Tooker	Wm McGill
<i>Cpts</i>	G V Buskirk	<i>Surg</i> H G Farish	Z Freeman
J G Enslow, <i>adj</i>	W Larkin	<i>AS</i> Jos B Bond	S Freeman
Benj Perry	J B Bodreau	4th BATT.	Stephen Maek
Wm Holden	Jos Porter	<i>lt col</i>	Geo Pearson
Jas Barclay	H Nickerson	W B Sargeant	Jno Fraser
P Spearwater	Chas McLarrin	<i>cpts</i>	2d lts
Jno Lock	<i>Adj</i> D V Norden	J P Doane	John Cobb
Wm Muir	<i>capt</i>	Jas Smith	Jos Ford
1st lts	<i>Q m</i> Jas Lent	J Sargeant, <i>adj</i>	Geo Freeman,
Saml Lock	3d BATT.	J Osborne	Jno McDonald
Wm McMillan	<i>lt Col</i>	K Reynolds	A McDonald
Thos Johnston	Jno Bingay	Andw Crowell	Geo Freeman jr
Eben Martin	<i>major</i>	1st lts	E Knowles
Wm Stalker	G B Van Norden	Jas Kenny	Jno H Freeman
2d lts	<i>Cpts</i>	Jethro Colville	Jas A Taylor
Rich King	Jas Dane	E Knowles,	Jno Kempton
D Matthews	D Pattin	Josh Atwood	Robt Roberts
Jas Griffin	Israel Kelly	Jno Lyle	<i>adj</i> W Freeman,
Geo Boole	John Cook	2d lts	<i>capt</i>
Josh Snow	Benj Lewis	Thos Coffin	<i>Q m</i>
Gilbert Kenna	M Killum	J Kenny	<i>Sg</i> A Webster
A Vernon	A Huntingdon	J C Crowell	<i>AS</i> D Grieve
<i>adj</i> I G Enslow,	Geo Bingay <i>adj</i>	Wm Patterson	County Lunen-
<i>capt</i>	Thos B Tooker	<i>adj</i> JSargeant, <i>cpt</i>	burg Regts.
<i>Q m</i> J Tottie	W B Moody	<i>Q m</i> S O Doane	1st BATT.
			<i>lt col</i> J C Rodolf

County
ent.
ol
man
ors
olf
an
ols
s
olf
aylor
mpbell
nan, adj
ton
ke
pper
arrow
eman
t lts
man
win
cViker
eman
Calkin
cGill
man
man
n Maek
earson
aser
d lts
Cobb
rd
eman,
cDonald
Donald
reeman jr
owles
Freeman
Taylor
empton
Roberts
Freeman,
t
Webster
Grieve
ty Lunen-
e Regts.
BATT.
JC Rudolf

majors
Garret Miller
Wm Rudolf
capt
C Oxner
Jno Anderson
H Kaulback
C J Rudolf
P W James
HenOxner[arty]
Geo Anderson
M Rudolf
Geo Creighton
Fras Rudolf
Wm Drew
1st lts
Mat Ernst
Chas Born
Nich Oxner
Jno Harley
Philip Mason
Jos Rudolf
Jno Hebb
Geo M Fancy
Jno Ernst
Fras Boehner
Jno Frederick
2d lts
Jno Ernst
Jos Miller
Garret Miller jr
Chas Bolman
P Kaulback
Chas J Rudolf
Chas Pernette
Wm Mosher
Jno Rudolf
Edm Zwicker
Jno Publicover
Josh McRae
Lewis Arenburg
Wm Newcomb
AdjGT Solomon
Q m D S Grant
Sg G Jacobs

2d BATT.
Lt col
Jno Heckman
majors
Jno Creighton

Jas S Thomson
Jno Hunt
capt
Hen Ernst, adj
P Strum
Thos Zwicker
Jno Zwicker
Geo Ernst
Geo Zwicker
Robt Mooney
C Metzler
Jno Crandle
J.B. Comingo qm
Jno G Thomson
John Naas
Jos Gátes
Chas T. Evans
1st lts
Leo Hertlie
JThomson (aty)
M Publicover
A Zwicker
Adam Lantz
Jos Lordly
Leon Gildert
Edw Zwicker
Wm Ross
H S Jost
2d lts
Fras Zwicker
Edw Cogley
J M Smith
Jas Crousher
Jas Williams
Fred Ernst
Jno Kedy
Dan Dimock
Wm Heckman
Wm Gilbert
Alex McKay
Cornelius Lordly
Geo Dimock
AdjH Ernst, cpt
Qm J B Comingo
capt
Sg Jno Harley
ASWAKearney

Cape Bre-
ton.
1st Regmt.
1st BATT.
Lt col
Chas E Leonard
major
Wm HCrawley
capt
Saml Plant
Sam Rigby, adj
Rich Brown
Chas M Dodd
Edm M Dodd
C Barrington
Jno Ferris
Lewis W Bown
Josh W Weeks
Lieuts.
Luke Hall
I. Bown
Geo Rigby
J Weeks
Wm Gammill
Chas Dumaresq
Arnold Holmes
Jno Hill
Peter Moore
Syd Barrington
Wm Cook
Rich Gibbons, jr
R Campbell
A Ross
J Ross
Edw Bown
J Dodd
Niel McKay
Adj S Rigby, cpt
Q M. John Ball
Surg Wm Hare
2d BATT.
Lt. col.
Nich. H Martin
major

capt
John Jones
G McKay
J McKay
Don Logan

Wm Jones
P Hume
Lieuts.
Wm Jones
Don Carmichael
Jno McNeill
Sanuel Peters
Jas Sparling
Robt Sutherland
Alex Anderson
Jno Sprling
Jas Fraser
Thos Joice
Adj. John Smith

3rd BATT.
Lt col
Pe'er H Clarke
major
Wm Gammill
capt
C McAlpine
Jno Scott
Lieuts.
Jno Martin
Dun Currie
Alex Campbell
Thos Pembroke
Neil McNeil
Don McDonald
Gibbs Gisner adj
Ang McGilvery
Jno McEacran
adj G Gisner, lt.
Q m. T McKea-
geny

4th BATT.
Lt col
Jno McKinnon
capt
Don McLeod
Jno Munro
Jas Brown, adj

Alex McKinnon	Hen Martell	<i>adj</i> D Pellier, <i>cpt</i>	Rod McLean
Alex Munro	Peter Terriot		Hy Williams
R Buckmaster	Peter Forest	<i>3d Regmt.</i>	Jno McDonald
<i>1st lts</i>	Jno Hubert	<i>1st BATT</i>	Jno McKinnon
Robt Sutherland	Josh Alexander	<i>lt. col.</i>	Doug. Smith
Jno Fraser	Don McDonald	Wm McKeen	E Cameron
James Fraser	Isaac Nicolle	<i>majors</i>	D McDougald
Jno McLeod 1st	Jno Bourinet	H McMillan	A McDonald
Jno McLeod, 2d	Chas Blampied	Nath Clough	Ang Beaton
David Corbett	<i>adj</i> Thomas E.	<i>capts</i>	A Campbell
<i>2d lts</i>	Chandler, <i>capt</i>	J L Tremain, <i>ad</i>	Mal, McKay
Hec. McKenzie	Q m Jno Walsh	Jno Campbell	<i>adj</i> J L Tre-
Jno Fanning	Sg And. Madden	Jno McKeen	main, <i>capt</i>
Lauch Robertson	<i>2nd BATT</i>	Robt Patterson	<i>2nd BATT</i>
<i>adj</i> J Brown, <i>cpt</i>	<i>lt col</i>	Alex McInnes	<i>major</i>
	L Kavanagh,	D Grouchy	Hen Taylor
<i>2d Regmt</i>	<i>major</i>	Jas Doyle	<i>capts</i>
<i>1st BATT.</i>	Chas M McNab	Dun Campbell	N McLellan
<i>lt. col.</i>	<i>copts</i>	Don Cameron	A McLellan
Clement Hubert	Jno Cameron	Wm R Mullin	A McDonald
<i>major</i>	Dougald McNab	And McDonald	A McDonald
J Janyrin	Dani Pellier, <i>adj</i>	Alex Beaton	R McKinnon
<i>capts</i>	Jno B McNeill	Peter Bronvard	-- Bown
M Doyle	Jno Walsh	An McDougald	<i>lieuts</i>
T E Chandler, <i>ad</i>	Thos Simons	Don Campbell	Jno Ross
Peter de Carteret	M Kavanagh	<i>lieuts</i>	Jno McKinnon
John Ferrier	And Le Brocque	Alex McMuir	Jno McFarling
John Fuller	Robt McNab	C McMuir	Jas McLellan
E F Le Montais	D McPherson	Ph Le Brocque	A Smith
Wm Crichton	<i>lieuts</i>	H McDonald	H O Quin
Thos Le Noir	Justin Maubour-	T McDonald	Chas Boudroit
John R Smith	gette	A Chisholm	Dun McRae
<i>lieuts.</i>	Jno Matheson	Jas McDonald	M McDonald
Desirez Boudroit	Alex Murchison	Jas Hawley	Wm Campbell
Jno Ballaine	F McPherson	A McDonald	A Mc Lellan
A Brymer	N McMullen	Jno McKay	A Mc Innis
J F Wilson	Don Campbell	Don Beaton	Jno Mc Lellan
B G G Potts	Jno McDougall	Jno Doyle	A Chisholm
Victor Terriot	Jno Smith	Allen Cameron	R McDonald
Isaac Paon	J Morrison	Mat Hawley	Jno McLean
Thos du Bois	Jno Proctor	Wm Watts jr	Ang Isaac
Sim Bahin	Ad McPherson	Don McLean	<i>adj</i> DCampbell
Benj Terriot	Peter Legat	Jno McMillan	
Chas Wood	Jas Proctor	Thos Emery	
Cha Terriot	Geo Strachan		

THE NAVY.

Commander in Chief on the West-India,
Halifax, and Newfoundland Stations,

Secretary, EDWARD LAWES, Esq.

ARACHNE - - - 18 **DISPATCH - - - 16**

Comm..... Wm Gapper Agar
Lieuts..... Jno B Woodthorpe
 Arch G Bulman
Master.... Henry Mapleton
Surgeon... John Houston
Purser.... John Warwick
Asst. Surg.. Andrew Coats

Comm.... George Daniell
Lieuts.... Fras Smyth
 Hon G H St. Vincent
 D Kincaid
Master.... Wm Jennis
Surgeon .. Wm Aitchison
Purser ... J E Key
Asst. Surg. John Crichton

ARIADNE - - - - 28

Capt..... Charles Phillips
Lieuts..... Wm S Blount
 Augustus Lavie
 John Russell
1st Lt. Mar. F S Hamilton
Master.... J R Fittock
Surgeon... Edward Hilditch
Purser.... Charles H Osmer
Asst. Surg. Wm Hobbs

FIRE FLY - - - - 3

Lt. Com... John J McDonell
Asst. Surg. John McRae

BLANCHE - - - - 46

Capt..... Arth. Farquhar, C B
K H & Kt. of *Sword of Sweden*
Comm.... Wm Burnett
Lieuts..... Henry Stroud
 Edward Lake
 S H Usher

FLY - - - - - 18

Comm Peter McQuhae
Lieut..... Chas Sergeantson
 David C Comby
Master... John Rogers
Surg..... C McArthur, M D
Purser.... E M Denby
Asst Surg.. Wm Bayne

COLUMBINE - - 18

1st Lt Mar.
2d Lt ... A S S Walsh
Master.... W C Middlemist
Chaplain .. James H Malet
Surgeon... John Armstrong
Purser.... R M Read
Asst. Surg.. Jno Jas Lancaster
Comm.... Henry O Love
Lieut. R R Metherell
 Richard E Bullen
Master.... John Pyke
Surgeon... Alex Smith
Purser.... John Tindall
Asst Surg.. Thos H Nation

GANNET - - - - 18

Comm.... Mark H Sweny
Lieuts... Thomas Lyell
 Henry Wright
Master... John Halcrow, act.
Surg..... Robert Holden
Purser.... John Tayler, acct.
Asst Surg, John Andrews

COLUMBINE - - 18

HYACINTH - - - 18

Comm.... Wm Oldrey
Lieuts.... Robert G Welch
 H W Giffard
Master.... Geo Peacock, acct.
Surg..... John Sinclair, M D
Purser.... W G Atill
Asst Surg, Anthony Yeoman.
KANGAROO..... 3
Lt Com ... James Hookey
Asst Surg.. Wm Pennycook.

McLean
Liams
Donald
Kinnon
Smith
eron
Dougald
Donald
eaton
pbell
McKay
L Tre-
n, capt
BATT
ajor
aylor
apts
Lellan
Donald
Donald
Kinnon
own
Lieuts
Coss
McKinnon
McFarling
Lellan
mith
Quin
Boudroit
McRae
Donald
Campbell
Lellan
Lumis
Lellan
holm
Donald
McLean
Isaac
Campbell

MAGNIFICENT 4

Receiving Ship, Jamaica.
 Lieut Com... John Paget
 Master W E A King
 Surg Jer Riordan
 Purser John Bryan
 Asst Surg.. James Kittle
 Super ... William Houghton
 Alex Sanderson

MINX 3

Lieut Com.... John Simpson
 Asst Surg. Geo E Oughton

NIMBLE 5

Lieut Comm.. John M Potbury
 Asst Surg. James Lowry

NORTH STAR 28

Capt Rt Hon. Ld. W Paget
 Lieuts. John Parsons
 C H M Buckle
 Edward Stopford

Master. George Parsons
 Surgeon Robert Espie
 Purser. Edw F Heaslop
 Asst Surg. Jas O McWilliam

PALLAS 42

Capt Wm Walpole
 Lieut. Jeffrey W Noble
 Horatio Blair
 Wm C Nowell
 George St V King

1st Lt Mar.... John Colliss

2d Lieut. Edward Hocker
 Master. Edward Rose
 Chaplain. Nat T Royse
 Surgeon John Hately
 Purser John Porter
 Asst Surg. Henry Holmes
 Super. John Steavenson

PEARL 20

Com. Robert Gordon
 Lieut. George Beaufoy
 Jas Heysham

Master. Fred S Fraser
 Surgeon. Alex Lane
 Purser. Francis Lean
 Asst Surg. Geo A Munro

PICKLE - - - - 5

Lieut. Com.... Chris Bagot
 Asst Surg. Wm Martin

PINCHER 5

Lieut Com.... W S Tulloh
 Asst Surg. John McIlroy

RACEHORSE - - 18

Commander F V Cotten
 Lieutenant Thomas Hope
 Geo M Hunter
 Master James Cooper
 Surgeon Arthur Savage
 Purser James Halse
 Asst Surg. Alex Sanderson

SAPPHIRE - - - 28

Captain Hon G W R Trefusis
 Lieutenant. Thomas Gregory.
 Fred Gilly
 Lionel Halliday

2nd Lt Mar... P T M Payne

Master John Tonkin
 Surgeon Harry Goldney
 Purser Wm Crane
 Asst Surg. David Grant
 Super. Chas K Nutt

SKIPJACK - - - 5

Lieut Com .. W Shortland
 Asst. Surg. Thos E Ring

SPARROWHAWK 18

Commander .. Thomas Maitland
 Lieutenant. Thomas M Currie
 James A Abbott

Master T B Codnor, acct.
 Surgeon Rich C Nutt
 Purser John Lord

SPEEDWELL - - 5

Lieut Com.... C H Norrington
 Asst Surg. R W Campbell

TWEED - - - - 20

Commander Allen Bertram
 Lieutenant George Kennedy
 Fras W Austen

Master James B Tucker
 Surgeon Wm Bothwell
 Purser Thos McKnight
 Asst Surg. W Orr

VICTOR - - - - 18

Commander Robert Russell
 Lieutenants. Edw C Miller
 C F Brown

Master. H J Strutt
 Surgeon John West
 Purser Henry South
 Asst Surgeon. Samuel Browne

WINCHESTER - 52

Capt Hon W Welleseley
 Commander H G Colpoys

Super Com....	H W Bayfield	2nd LieutMar...	John Urquhart
Lieutenant	Arth Wakefield	Master	James Napier
	Wm Crooke	Chaplain	Jno M Edwards
	Charles Bolton	Surgeon.....	John Campbell
	Wm Lewis	Purser	Thomas Gliddon
	Honorable A W	AsstSurgs.....	Robt H Bruwn
	Monckton, FL		Robt Fairservis
SuperLieuts....	Philip E Collins	Super	James Jackson
	Geo L Campbell		James L Clarke
	Thomas Smith		ThosWm Jewell
Capt. Mar.....	John Hewes		

MAILS MADE UP AT HALIFAX

For Windsor, Kentville and Annapolis, closes on Monday and Wednesday, at 4 o'clock,

For Windsor, Kentville, Annapolis, Digby, Yarmouth, Shelburne and St. John, N. B. on Friday at 4 o'clock.

For Wallace, Economy, Gay's River, Musquodobit, Truro, Cumberland, Pictou, Prince Edward Island, Cape-Breton, Antigonish, New-Brunswick, Chaleur Bay and Canada, on Wednesday at 1 o'clock.

For Truro and Pictou, on Thursday and Saturday, at 4 o'clock.

For Chester, Lunenburg, Liverpool and Shelburne, via Windsor, on Monday at 4 o'clock.

MAILS ARRIVE.....at 6 o'clock evening,
From Windsor, Kentville, Annapolis, Chester, Lunenburg, Liverpool and Shelburne, Monday.

Truro and Pictou, Tuesday and Thursday.

Windsor, Kentville, Annapolis, Digby, Yarmouth, Shelburne and St. John, N. B. Wednesday.

Canada, New-Brunswick, Prince Edward Island, Cape-Breton, Cumberland, Truro and Pictou, Saturday.

SHUBENACADIE CANAL COMPANY.

Board of Directors.... *Hon.* T N Jeffery, President;
Hon. Saml Cunard, *V P*; *Hon.* Joseph Allison, *V P*;
Law-Hartshorne, Saml Head, Jno Clark, Jno A Barry,
Mich Tobin, Jas Tremain, and J Leander Starr, Esqs
Secretary, C R Fairbanks, Esq.

C. H. BELCHER,
BOOK-SELLER and STATIONER,
 Opposite the Province Building,

HALIFAX, N. S.

Has constantly on hand, and offers for Sale at
 the lowest rates, an extensive assortment of

ACCOUNT BOOKS

of every variety, and in various Bindings,
 Blank Books bound and ruled to any pattern.

SCHOOL BOOKS

of ALL the various kinds used in the Province.

Writing, Printing and other Papers,

Playing, Visiting and Printing Cards.

Ink Stands, Inks and Ink Powder, Sealing Wax, Wa-
 fers, Tapers and Stands.

Backgammon Tables, Chess Boards and Men.

Boxes Colours and single Cakes, Indian Ink,

Camel Hair Pencils, Middleton's Lead

Pencils, Brookman and Lang-

don's Drawing Pencils,

Bristol Boards and

DRAWING PAPER.

Pocket-Books, Pocket Ledgers, Ivory and Slate

Memo Books, Slates and Slate Pencils.

Children's Books, in great variety,

Bibles, Psalm Books, Prayer Books.

A general assortment of

CHARTS.

A great variety of

Prints, Scraps, Caricatures.

A handsome assortment of

PAPER HANGINGS & BORDERING.

Check Books, Bill Books, Bills Receivable and

Payable Books. Law and other Blanks.

.....

 Book-Binding of every description executed in
 the neatest manner.

Books and Periodicals imported to order.

SUBSCRIPTIONS RECEIVED FOR

The New-England Magazine, a monthly publication---price \$5 per annum.

The Protestant Episcopal Pulpit, a monthly publication---price \$1-25. per annum.


New-York Albion and the Emigrant, newspapers.

Etna Fire Insurance Company,

OF HARTFORD CONNECTICUT,

HAVE appointed JOHN LEANDER STARR, of Halifax, N S. their Agent for Nova-Scotia and Prince Edward Island, and will insure Buildings, Merchandize, Vessels on the Stocks, Vessels and Cargoes in Port, Furniture, &c. &c. against loss or damage by fire, at very moderate premiums.

In addition to the Capital Stock of \$200,000, [the whole of which is amply secured] the Etna Company possesses a surplus of more than \$35,000, also safely invested.

 The Agent will furnish any other information that may be required.

New Marine Insurance Office.

THE Subscriber has been appointed the Agent at Halifax, for the "Protection Insurance Company" of Hartford, Conn. to take risks on Vessels, Cargoes, &c. against the dangers and accidents of the seas; and is in the possession of the most ample and satisfactory evidence of its high standing and reputation.

The increased Commerce of this Colony has long called for an additional Marine Insurance Office to the one established here; and as the Agent of the "Protection Company" is authorised to affix the rates of Premium, and to grant Policies upon application to him, a great facility will be thus given to those who now insure their property in different parts of the United States.

Applications must in all cases be made—expressing every particular—in writing, and signed by the applicant [if by mail post paid.] The credit usual in the U. S. will be given on premiums.

Every information will be afforded upon application at the Agent's Office.

J. Leander Starr.

Applications to contain the following information, viz. Vessels name—age—Tonnage—description—Masters's name, owner—property to be insured—voyage—amount on each vessel—cargo and freight—if required—where vessel is—when she is to, or did sail—if at sea—when last heard from—value of vessel—if insurance is required on the hull, &c. &c.

The following notice respecting the sailing of the Parrsboro' Packet, came too late for insertion in the proper place:

"The Parrsboro' Packet sails regularly to Windsor and Horton every week, from 1st April to Christmas, leaves Parrsboro' for Windsor, on Monday, (wind and weather permitting) and will sail from thence for Parrsboro', on Tuesday, immediately after the arrival of the Mail by the Stage Coach if practicable—leaves Parrsboro' on Thursday so as to be at Horton on Friday, and will sail from thence for Parrsboro' the first high water that happens at or after 8 o'clock in the morning. *Passengers who wish to cross from Parrsboro'* should be there the evening previous to the Packet's sailing, as she often leaves Patridge Island river before daylight in the morning. The packet frequently makes extra trips both to Windsor and Horton.

