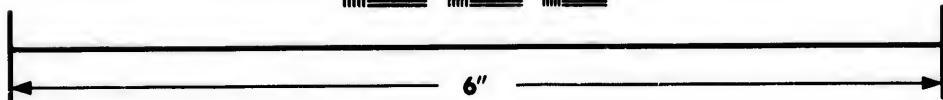
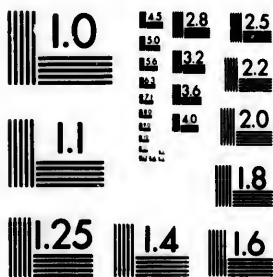


**IMAGE EVALUATION
TEST TARGET (MT-3)**



**Photographic
Sciences
Corporation**

23 WEST MAIN STREET
WEBSTER, N.Y. 14570
(716) 872-4503

15
128
125
122
120
118

**CIHM/ICMH
Microfiche
Series.**

**CIHM/ICMH
Collection de
microfiches.**



Canadian Institute for Historical Microreproductions / Institut canadien de microreproductions historiques

110
01

© 1982

Technical and Bibliographic Notes/Notes techniques et bibliographiques

The Institute has attempted to obtain the best original copy available for filming. Features of this copy which may be bibliographically unique, which may alter any of the images in the reproduction, or which may significantly change the usual method of filming, are checked below.

L'Institut a microfilmé le meilleur exemplaire qu'il lui a été possible de se procurer. Les détails de cet exemplaire qui sont peut-être uniques du point de vue bibliographique, qui peuvent modifier une image reproduite, ou qui peuvent exiger une modification dans la méthode normale de filmage sont indiqués ci-dessous.

- Coloured covers/
Couverture de couleur
- Covers damaged/
Couverture endommagée
- Covers restored and/or laminated/
Couverture restaurée et/ou pelliculée
- Cover title missing/
Le titre de couverture manque
- Coloured maps/
Cartes géographiques en couleur
- Coloured ink (i.e. other than blue or black)/
Encre de couleur (i.e. autre que bleue ou noire)
- Coloured plates and/or illustrations/
Planches et/ou illustrations en couleur
- Bound with other material/
Relié avec d'autres documents
- Tight binding may cause shadows or distortion
along interior margin/
La reliure serrée peut causer de l'ombre ou de la
distortion le long de la marge intérieure
- Blank leaves added during restoration may
appear within the text. Whenever possible, these
have been omitted from filming/
Il se peut que certaines pages blanches ajoutées
lors d'une restauration apparaissent dans le texte,
mais, lorsque cela était possible, ces pages n'ont
pas été filmées.
- Additional comments:/
Commentaires supplémentaires:

- Coloured pages/
Pages de couleur
- Pages damaged/
Pages endommagées
- Pages restored and/or laminated/
Pages restaurées et/ou pelliculées
- Pages discoloured, stained or foxed/
Pages décolorées, tachetées ou piquées
- Pages detached/
Pages détachées
- Showthrough/
Transparence
- Quality of print varies/
Qualité inégale de l'impression
- Includes supplementary material/
Comprend du matériel supplémentaire
- Only edition available/
Seule édition disponible
- Pages wholly or partially obscured by errata
slips, tissues, etc., have been refilmed to
ensure the best possible image/
Les pages totalement ou partiellement
obscurcies par un feuillet d'errata, une pelure,
etc., ont été filmées à nouveau de façon à
obtenir la meilleure image possible.

This item is filmed at the reduction ratio checked below/
Ce document est filmé au taux de réduction indiqué ci-dessous.

10X	14X	18X	22X	26X	30X
<input type="checkbox"/>	<input type="checkbox"/>	<input checked="" type="checkbox"/>	<input type="checkbox"/>	<input type="checkbox"/>	<input type="checkbox"/>
12X	16X	20X	24X	28X	32X

The copy filmed here has been reproduced thanks to the generosity of:

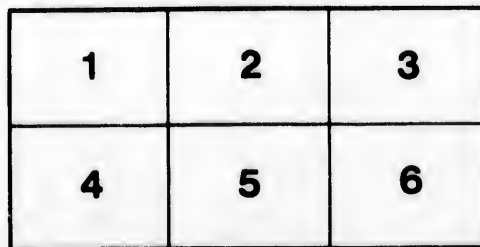
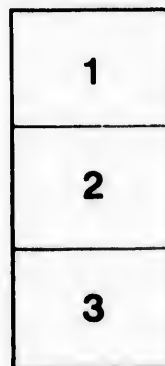
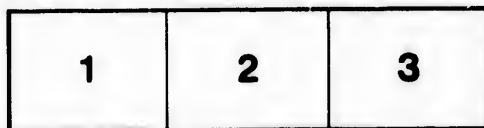
Thomas Fisher Rare Book Library,
University of Toronto Library

The images appearing here are the best quality possible considering the condition and legibility of the original copy and in keeping with the filming contract specifications.

Original copies in printed paper covers are filmed beginning with the front cover and ending on the last page with a printed or illustrated impression, or the back cover when appropriate. All other original copies are filmed beginning on the first page with a printed or illustrated impression, and ending on the last page with a printed or illustrated impression.

The last recorded frame on each microfiche shall contain the symbol \rightarrow (meaning "CONTINUED"), or the symbol ∇ (meaning "END"), whichever applies.

Maps, plates, charts, etc., may be filmed at different reduction ratios. Those too large to be entirely included in one exposure are filmed beginning in the upper left hand corner, left to right and top to bottom, as many frames as required. The following diagrams illustrate the method:



L'exemplaire filmé fut reproduit grâce à la générosité de:

Thomas Fisher Rare Book Library,
University of Toronto Library

Les images suivantes ont été reproduites avec le plus grand soin, compte tenu de la condition et de la netteté de l'exemplaire filmé, et en conformité avec les conditions du contrat de filmage.

Les exemplaires originaux dont la couverture en papier est imprimée sont filmés en commençant par le premier plat et en terminant soit par la dernière page qui comporte une empreinte d'impression ou d'illustration, soit par le second plat, selon le cas. Tous les autres exemplaires originaux sont filmés en commençant par la première page qui comporte une empreinte d'impression ou d'illustration et en terminant par la dernière page qui comporte une telle empreinte.

Un des symboles suivants apparaîtra sur la dernière image de chaque microfiche, selon le cas: le symbole \rightarrow signifie "A SUIVRE", le symbole ∇ signifie "FIN".

Les cartes, planches, tableaux, etc., peuvent être filmés à des taux de réduction différents. Lorsque le document est trop grand pour être reproduit en un seul cliché, il est filmé à partir de l'angle supérieur gauche, de gauche à droite, et de haut en bas, en prenant le nombre d'images nécessaire. Les diagrammes suivants illustrent la méthode.

CANADA.
MANITOBA.

SIXTY THOUSAND ACRES
OF
SELECT FARMING LANDS

*In the vicinity of Winnipeg, and the various Settlements
of the Province of Manitoba.*

FOR SALE BY
ROSS, ROSS & KILLAM,
BARRISTERS, &c.,
WINNIPEG, MANITOBA.

LANDS PURCHASED ON COMMISSION. GOOD TITLES.

Deome. vol. 3. p. 115. no. 18579

TORONTO:
C. B. ROBINSON, PRINTER, 5 JORDAN STREET.

1880.

CANADA,
MANITOBA.

Pool 548

SIXTY THOUSAND ACRES

OF

SELECT FARMING LANDS

*In the vicinity of Winnipeg, and the various Settlements
of the Province of Manitoba.*

FOR SALE BY

ROSS, ROSS & KILLAM,
BARRISTERS, &c.,
WINNIPEG, MANITOBA.

LANDS PURCHASED ON COMMISSION. GOOD TITLES.

TORONTO:

C. B. ROBINSON, PRINTER, 5 JORDAN STREET.

1880.

S

I
the
T
pos
vic
scat
mer
in t
retu

A
wit
Bra
sell

I
Gov
peg
I

pos
the

A
fol

far
Sas
son

1
2
3
4
sell

RB41414

LIST OF SELECT FARMING LANDS

FOR SALE IN MANITOBA.

IN the following list we offer for sale about 60,000 acres of the choicest lands in the Province of Manitoba.

They have been selected with great care for the express purpose of being offered to *actual* settlers, and are either in the vicinity of Winnipeg or in the various prosperous settlements scattered throughout the Province. We can therefore recommend them to those proposing to settle at once upon a farm in this Province, as they offer inducements by making speedy returns for any labour expended upon them.

A large quantity of these lands are, even at the present time, within marketable distance from Winnipeg or the Pembina Branch, C. P. R., so that those settling upon them can readily sell their produce at fair prices.

It is impossible to obtain desirable homesteads from the Government lands, without going over 100 miles from Winnipeg or the C. P. R.

By going so far from market, farmers will find it almost impossible to dispose of their surplus produce till a railway passes their doors which will likely be from four to ten years hence.

Alexander Begg, Esq., in his "Guide to Manitoba," has the following :

"It is our opinion that an immigrant would be unwise to go far beyond the line of settlement, or to undertake to go to the Saskatchewan in advance of civilization, for the following reasons :

1. The heavy cost of getting to his claim.
2. His isolation until settlements reach him.
3. The high cost for procuring the necessaries of life.
4. The distance from a market ; even with the chance of selling his produce to traders and others, his profits would be

caten up by the cost of procuring necessaries which he is unable to raise on his farm.

5. His isolation from churches and schools.

6. The nearer he keeps to the line of settlement the quicker will he obtain all the benefits of civilization, especially as the march of development is rapid in this country.

It is for this reason that we condemn the idea of inducing immigrants to go to the North-West in advance of settlements and before proper means of communication are opened up to that vast country.

It must not be understood, however, that we have any desire to belittle the Saskatchewan country, on the contrary we are of opinion that in the near future that great territory will afford homes for thousands of hardy and industrious farmers; and we are also aware that as far as climate, soil, and other advantages are concerned, the Saskatchewan is equal to Manitoba. But our desire is not to mislead people for the mere purpose of advancing immigration, and the development of the country will be sufficiently promoted by allowing the progress of settlements to be gradual rather than scattered in its character."

Farmers coming to Manitoba should not take very much goods and merchandise with them for they can purchase all they require at reasonable rates in Winnipeg, as can be seen from the following :

The prices in Manitoba of agricultural implements can be seen by the following list :—

Breaking ploughs, \$25 to \$29.

Common ploughs, \$16 to \$22.

Reapers, \$140 to \$160.

Mowers, \$80 to \$120.

Reapers and mowers combined, \$180 to \$200.

Horse hay rakes, \$35 to \$45.

Waggon, American manufacture, as good as made in Canada, \$80 to \$95.

Fanning mills, \$30 to \$45.

Spades, \$1 each.

Shovels, \$1.25 each.

Hay forks, 75 cents.

Manure Forks, \$1 each.

Harrows, \$15 to \$35.

The prices of the following staple articles will give some idea of the cost of living in Manitoba :—

Tea per lb., 50 to 75 cents.

Sugar per lb., 10 to 12 cents.

Coffee per lb., 22 to 23 cents.

Tobacco, black, 50 cents.

Tobacco, smoking, 50 to 55.

Coal oil, per gallon, 50 cents.

Syrup, per gallon, 75 to 80 cents.

Pails, each, 3 hoops, 30 cents ; 2 hoops, 25 cents.

Tubs, 16-inch, 90 cents each.

A good stout suit of clothing for a man, from \$3 to \$15.

Blankets, grey, per pair, \$1.50 to \$3.

Canadian blankets, white, per lb., 55 to 75 cents.

Cotton, per yard, white, 8 to 12½ cents ; grey, 8 to 12 cents.

Prints, 8 to 12 cents ; Winceys, 8 to 25 cents.

Woollen stockings, per pair, 15 to 30 cents.

Flannel shirts, each, 75 cents to \$1.25.

Men's boots, \$2 to \$3.

Women's boots, \$1.25 to \$1.75.

Felt hats, 75 cents to \$1.

In household fittings the following prices are quoted for good plain articles :—

Table, \$3.50 to \$6.

Chair, 50 cents to \$1.

Bedstead, \$4 to \$5.

Bureau, \$8 to \$12.

Kitchen stove, No. 8, good, with complete furniture, \$22.

Cup and saucer, 8 to 15 cents.

Plate, 8 to 20 cents.

Coal oil lamp, 60 cents to \$1, complete.

Axes, \$1.25 to \$1.50.

In building material :—

Good plain lumber, \$20 to \$40 per M.

Good dressed lumber, \$30 to \$60 per M.

Shingles, \$4 to \$6 per M.

Laths, \$5.

Nails, 6 cents per lb., or \$5 per keg.

Lime, 25 cents per bushel at the kiln.

Doors, \$1.50 to \$2.50 each.

Sash, 8 × 10, \$1 per pair.

A good single harness, \$12 to \$20.

A good double harness, \$30 to \$35.

In the above we have only given quotations for a few of the principal articles required by a settler, so as to give you an idea of the general cost of goods in Manitoba, and we are of opinion

that parties can purchase to better advantage in this Province, than to bring their old worn-out effects with them, and pay freight on them.

If the settler takes any of his effects through with him from the other Provinces, he should make out an invoice—in triplicate—of his goods or animals, go before the Collector of Customs at or near his place of departure, and make a declaration that the goods or animals are the manufacture or production of the Dominion of Canada, or that duty has been paid upon them, and the said Collector will then attach his seal to the invoice. With this invoice he can bond his goods at the first United States port he enters, leaving two copies of the invoice with the Collector of this port, and retaining the other for the arrival of his goods in Manitoba.

The productions of the farm, including stock, bring the following prices at the present time in Winnipeg:—

Horses, span, \$200 to \$300.

Oxen, yoke, \$140 to \$175.

Cows, each, \$25 to \$45.

Wheat, per bushel, 70 cents to 80 cents.

Oats, per bushel, 35 cents to 70 cents.

Barley, per bushel, 55 cents to 75 cents.

Potatoes, per bushel, 45 cents to 85 cents.

Butter, per lb., 20 cents to 35 cents.

Eggs, per dozen, 15 cents to 35 cents.

Hay, per ton, \$7 to \$12.

Wood, per cord, \$4 to \$7.

We give the following quotations from a pamphlet issued by C. J. Brydges, Esq., of the Hudson's Bay Company:—

“The valley of the Red River is the richest alluvial soil on the continent of North America, and its strength and depth increases, as it nears its mouth.

“The Assiniboine River, several hundred miles in length, and which falls into the Red River at Winnipeg, runs through another valley, having a wonderful depth of splendid soil.

“The productiveness of the soil along the Red River, Assiniboine and Little Saskatchewan Valleys, is greater than in Minnesota or Dakotah, and the yield of wheat per acre is considerably larger. This is also the fact throughout the whole Province of Manitoba. The exhibit of the growth of cereals and vegetables from Manitoba at the agricultural shows this year at Ottawa, Toronto, Hamilton and London, is the strongest

testimony of the wonderful fertility and productiveness of the prairie soil of that Province."

"If further evidence is needed, it may be found in the speech lately made by the Consul-General of the United States for Manitoba, who, as lately as the 3rd October, 1879, made the following statement, in regard to the flow of emigration westward. He said that one of the great tides of emigration now was to the Northern Zone, 'specially adapted to wheat growing and cattle raising. That included Canada, Wisconsin, Michigan partially, and Minnesota, but three-fourths of the great wheat producing belt of the continent lay north of the boundary. There the future bread supply of America, and of the old world too, would be raised.' He went on to say 'that he wished to allude to that which was also of very great moment, the meat supply. In his opinion the beef raised in the northern district to which he had referred, would be found to be superior in quality and superior in quantity to any that could be raised even on the plains of Texas and the adjoining states.'"

Such testimony is certainly unimpeachable.

The weight of wheat per bushel grown in Manitoba is considerably heavier than in any portion of the United States, and the yield per acre is also very much more. The average yield in the whole of the United States is less than thirteen bushels to the acre, whilst in Manitoba the average is more than double that yield per acre.

The country is well adapted for raising cattle, the prairie grass being peculiarly nourishing and in unlimited quantities.

It also makes excellent hay, the only expense being the cost of cutting and drawing to the farm-yard. So excellent is the prairie grass that cattle driven for hundreds of miles across the plains, towards a market, improve steadily in weight and condition as they proceed on their journey. The abundance of grass and hay, and the excellent root crops which are grown, render the raising of large herds of cattle extremely profitable.

The climate of Manitoba and the North-West is extremely healthy. Fever and ague, which exist in so many parts of the Western States, are here entirely unknown. In summer the heat is by no means oppressive, the nights being always cool and bracing. The heat, whilst amply sufficient for the thorough maturity of the crops, is no greater than in Ontario, or throughout the north-western portion of the continent. In winter the cold is steady and no greater, as a rule, than is met with in

all parts of the western part of the continent north of Chicago. The fall of snow is much lighter than in most parts of Canada, seldom reaching two feet in depth. On the whole, the climate is an excellent one, both as regards the health of the inhabitants and the maturity of the crops.

The City of Winnipeg, which nine years ago had about 500 inhabitants, has now a population of nearly 10,000 people. It has several large and well built churches, colleges and schools, where excellent education is to be secured, many stores equal in size and attractiveness to those in the eastern cities, large and good hotels, several banks, and many excellent private residences.

At Portage la Prairie, seventy miles to the westward, a rapidly growing town is rising up. At Emerson, West Lynne, Morris, Palestine, Westbourne, Selkirk, and a good many other places, towns are also rapidly growing.

FUEL.

The line of the C. P. R. from Winnipeg to Thunder Bay passes through most extensive timber districts near Rat Portage, where large saw mills are now in course of erection, and which will supply at moderate prices all the lumber required for buildings and fences in the western part of the country.

Considerable quantities of timber for building purposes and for fuel also, exist on the banks of all the rivers and creeks, and there are in addition groves of poplar all over the country. No difficulty will be found to exist as regards timber both for building and fuel.

COAL.

Large deposits of coal have been discovered on the Saskatchewan river and also on the Assiniboine and Souris rivers.—The former has already been worked to some extent, and the quality is pronounced by all who have used it as excellent.—They are commencing operations on the Souris coal beds this coming season.

There will be ample fuel of both coal and wood to be distributed by the lines of railway now constructing, in addition to the timber which is found on the banks of all the rivers.

Farmers in Manitoba now state that the cost of raising wheat does not exceed, if it reaches, forty cents a bushel. So that wheat will therefore be grown in Manitoba and delivered in Liverpool at a cost to the producer, including all charges for transport, of 85 cents a bushel or 28s. 4d. a quarter.

With wheat selling in England at 40s. a quarter, there is

thus
Man
T
from
73s.
A
try
year
will
U
two
tlers
und

T
on e
tler
tion
acre
the

“
tob
Bri
fros
gre
We
con
4
tre
the
by
ste
rai

wa
per
ve

cla

thus an enormous profit to be made by the wheat grower in Manitoba and the North-West.

The average price of wheat in England for the thirty years from 1849 to 1878 was 53s. a quarter—the highest price being 73s. 11*d.* in 1855, and the lowest 39s. 7*d.* in 1851.

At the rate at which settlers are now pouring into the country all the wheat grown in Manitoba for the next two or three years, until the railways now being constructed are completed, will be required for food and seed.

Up to the end of 1878 (the last official returns), upwards of two millions of acres of land had been taken up by actual settlers in Manitoba and the North-West. That quantity is now undoubtedly increased to nearly three millions.

GOVERNMENT GRANTS OF LAND.

The Government grants homesteads on alternate sections on each side of the railway, of 160 acres free, and allows settlers to take up an additional 160 acres on the alternate sections on "pre-emption," at prices ranging from \$2.50 to \$1 an acre. They also sell lands at prices ranging from \$5 an acre on the other sections on each side of the railway.

HOW TO REACH THE COUNTRY.

"The cost of conveyance from any part of Canada to Manitoba is exceedingly moderate, and the steamers from Great Britain are now so numerous, that the transport of a family from any part of the United Kingdom or from Canada to the great wheat growing and cattle raising districts in the North-West, is hardly appreciable when the advantages offered are considered.

A continuous line of railway now exists from Quebec, Montreal, Toronto, and indeed every town and village throughout the Dominion, to Winnipeg. An alternative route is offered by railway to Sarnia or Collingwood, and then by first class steamers to Duluth at the head of Lake Superior, where direct railway communication exists with Winnipeg.

This lake route will be greatly improved as soon as the railway now under construction from Thunder Bay, on Lake Superior, to Winnipeg is completed, and the cost and time of conveyance will also be materially lessened.

At present the cost of carriage for each person is as follows :

By rail all the way, from Montreal through Chicago—first class, \$59.25 ; emigrant, \$29.

From Montreal to Sarnia or Collingwood, and thence by the Lakes *via* Duluth—first class, \$52 ; emigrant, \$24.

Cattle, goods and agricultural implements are taken at reasonable charges by either route.

The lines of steamers from Liverpool, Glasgow, London, Bristol and Irish ports, carry cabin passengers at from £10 to £18 to Quebec, according to accommodation, and emigrants at from £3 10s. to £6 6s. per head.

The time occupied by these steamers is from 9 to 12 days, and from Quebec to Winnipeg the time is four days by railway throughout, and by way of the Lakes six days.

Settlers from Europe can therefore reach Manitoba in fourteen days from Liverpool, and from any part of Canada, in four days or less, at a small outlay.

A settler should not think of coming to Manitoba to take up land unless he has a capital, at the very least of \$500.

We give extracts from the Surveyors' Reports of Township Surveys in Manitoba and the North-West Territories, published by the Surveyor-General on the 31st Dec., 1877. We offer the following lands at from \$2 upwards :

RANGE I. EAST.

TOWNSHIP 7

"Is a beautiful plain, with a rich and productive soil, but totally devoid of timber and running water."

1. Sec. 4, soil first class, high dry prairie, 640 acres.

TOWNSHIP 9

"Is all prairie, with the exception of a few small bluffs of poplar and willow.

"The land is high and of good quality."

2. The S.E. qr. of sec. 33, and the E. half of the N.E. qr. of sec. 28, twelve miles from Winnipeg, part dry prairie and part hay land ; soil good ; 240 acres.

3. S.E. qr. and S. half of N.E. qr. of sec. 1, and the S.W. qr. and S. half of N.W. qr. of sec. 1 ; 480 acres, high dry prairie, well drained by the American ravine ; choice farm ; 480 acres.

4. S.W. qr. and S. half of N.W. qr. sec. 4 ; high dry prairie ; 240 acres ; soil first class.

5. The S.W. qr. of sec. 12 and S. half of N.W. qr. of sec. 12 ; high prairie with some hay land ; 240 acres.

6. N.W. qr. of sec. 10, and the S. half of S.W. qr. of sec. 15. 240 acres.

7. The S.E. qr. of and S. half of N.E. qr. of sec. 17 ; part high prairie and part hay land ; 240 acres.

8. The S.E. qr. of sec. 23, and the N. half of N.E. qr. of sec. 14, and the N.W. qr. of W. half of N.E. qr. of sec. 23 ; part rolling prairie and part hay land, soil very good ; 480 acres.

TOWNSHIP 10.

9. The S.W. qr. of sec. 3 and S. half of legal sub-divisions 9, 10, 11, 12 of sec. 3 ; 240 acres.

TOWNSHIP 11

"Is a level prairie with a few willow bushes. The Sturgeon Creek running through it from west to east, and about the middle from north to south, gives to this township a great advantage.

"The soil is in general first-class, and well adapted for agricultural purposes."

10. The N.W. qr. of sec. 32 and the N. half of the S.W. qr. of sec. 32 and the N.E. qr. of and the N. half of S.E. qr. of sec. 31, situate on Sturgeon Creek ; part high prairie and part hay land ; 15 miles from Winnipeg ; soil very good ; 480 acres.

TOWNSHIP 12

"Is a rolling prairie with a good many depressions thereon, forming meadows, part of which have been cut. Some of these meadows are covered with a most luxuriant growth of grass reaching upwards of five feet.

"In places where these meadows had been cut the second crop was found to be eighteen inches high. Two crops of hay may be procured in one season with ease.

"A prominent ridge runs from the north-west to the south-east, containing lime, marl and gravel. There is no running stream or natural spring of water in this township, but wells have been dug by the hay-makers, of which one contained some water in a depth of eight feet, at dry season, leading to the conclusion that a supply of water will never fail when properly looked for.

"At the places where the wells have been dug the section of the ground was two to four feet of black mould, and under it blue or yellow clays."

11. The S.W. qr. of sec. 2 and the E. half of the S.E. qr. of

sec. 3, two-thirds dry prairie, balance, good hay land ; 12 miles from Winnipeg ; 240 acres.

12. The N.W. qr. of sec. 18 and the S. half of the S.W. qr. of sec. 19 ; 180 acres dry prairie, 60 acres hay land, soil good ; 18 miles from city ; 240 acres.

13. The S.E. qr. of sec. 15 and the N. half of the N.E. qr. of sec. 10 ; soil, first-class ; 15 miles from Winnipeg ; 240 acres.

14. The N.W. qr. of and the W. half of the N.E. qr. of sec. 34 ; a very desirable farm ; 18 miles from Winnipeg ; 240 acres.

TOWNSHIP 14—BRANT.

"This township is partially covered with poplar bluffs. The north sections have the largest quantity. The fire having run over the greater part of them, young poplar is growing rapidly among the burnt timber. Taken altogether, this township is well adapted for agricultural purposes."

15*. S.W. qr. of sec. 23 and N. half of N.W. qr. of sec. 14.

RANGE II. EAST.

TOWNSHIP 6

"Is all good land, being partly high dry prairie, and level low marsh or hay land."

16. The S.W. qr. of sec. 20 ; part good hay land and part dry prairie soil ; first-class ; within two and a half miles of Red River ; 160 acres.

17*. And the N.W. qr. of sec. 1 and E. half of N.E. qr. of sec. 2.

TOWNSHIP 7

"Has a considerable part of its surface wet and marshy. The greater part is, however, dry and fit for agricultural purposes. It contains no timber of any kind."

18. The N.W. qr. of sec. 24, situated 2 miles from the Red River and 20 miles from Winnipeg ; 160 acres.

19. Sec. 32, high dry prairie, drained by two ravines ; 640 acres.

TOWNSHIP 11.

"The entire township will make valuable agricultural land.

"A rocky or stony ridge traverses this township from north to south.

"Stone is quarried in the 34 section and brought to Winnipeg for building—it is a soft, greyish limestone."

20*. S.E. qr. of sec. 33 and N. half of N.E. qr. of sec. 28 and the S.W. qr. of sec. 33 and the N. half of N.E. qr. of sec. 28 ; high prairie, with some splendid meadow land on a branch of Colony Creek, which drains it; 54 acres are broken and ready for crop, and considerable ditching done; 6 miles from Winnipeg; 480 acres.

TOWNSHIP 12

"Is, for the most part, an open prairie, there being but three or four groves of poplar, a few oak, and some swamp willow found on it.

"With the exception of some small areas of salty land, where a very scanty herbage grows, the entire township may be classed as superior agricultural land.

21. Sec. 8, a choice farm; 8 miles from Winnipeg; 640 acres.

TOWNSHIP 14—VICTORIA

"Is for the most part level prairie. An extensive marsh lies to the easterly part of the township, through which flows Jack Fish Creek.

"On the south-west there is a good deal of poplar, a large portion of which is fit for building purposes. There are some small islands of poplar on some of the prairie land. The soil is generally loam mixed with clay."

22. N.W. qr. of sec. 23 and W. half of N.E. qr. of sec. 23, very good.

23. S.W. qr. of sec. 23 and N. half qr. of N.W. qr. sec. 14.

24*. And the N.W. qr. and W. half of N.E. qr. of sec. 23.

25. The S.W. qr. sec. 30 and the N. half of the N.W. qr. sec. 25; 180 acres; first class high prairie land; Jack Fish Creek runs through this place; 240 acres.

RANGE III. EAST.

TOWNSHIP 5.

26. The S.W. qr. of 24 and the E. half of the S.E. qr. of 25, one-half mile from Pembina Branch, C.P.R.; part dry prairie and part hay land; 240 acres.

27*. S.E. qr. of sec. 19 and S. half of S.W. qr. of sec. 20.

28*. S.W. qr. of sec. 21 and E. half of S.E. qr. of sec. 20.

TOWNSHIP 6.

29. The E. half of sec. 1 and the S. half of S.E. qr. of sec.

12, situate on the Pembina Branch of the C.P.R., 3 miles from Otterburne Station; 400 acres.

TOWNSHIP 7—NIVERVILLE:

"Is well suited for agricultural purposes. It is wooded in the south and along the bank of Rat River."

30. The N.E. qr. of sec. 13 and the S. half of S.E. qr. of sec. 24; 240 acres.

31. The N.W. qr. of and the N. half of the S.W. qr. of sec. 25; 240 acres.

32. The N.E. qr. of sec. 36 and N. half of N.W. qr. of sec. 36; 240 acres; situate within one-half mile of Niverville Station.

33. The N.E. qr. and N. half of S.E. qr. of sec. 15; excellent farm; 240 acres.

34. The S.W. qr. of sec. 14 and S. half of S.E. qr. of sec. 15; adjoins above piece; 240 acres.

35. S.E. qr. of 36 and N. half of N.E. qr. of sec. 25.

36. S.E. qr. of and S. half of N.E. qr. of sec. 25.

TOWNSHIP 12.

37. The S.E. qr. and the S. half of legal sub-divisions 9 and 13 in sec. 33, and W. half of legal sub-divisions 4 and 5 in sec. 34, 10 miles from Winnipeg, 240 acres.

TOWNSHIP 13.

"The soil is dark and rather a stiff clay."

38. The S.E. qr. of sec. 20 and the N. half of the N.E. qr. of sec. 17, soil good, part hay land, 15 miles from Winnipeg; 240 acres.

39*. S.E. qr. of sec. 9, and N. half of N.E. qr. of sec. 4.

40*. S.W. qr. and S. half of N.W. qr. of sec. 18.

41*. N.W. qr. and N. half of S.W. qr. of sec. 24.

42*. S.W. qr. of sec. 19. and N. half of N.W. qr. of sec. 18.

TOWNSHIP 14.

"The part surveyed is on the west side of the township, and is nearly all fine rolling prairie.

"The soil is a good rich loam mixed with clay."

43*. S.E. qr. of sec. 7 and S. half of N.E. qr. of sec. 7.

44*. N.E. qr. of 6 and W. half of N.W. qr. of sec. 5.

45. S. half of sec. 1, S. half of N. half of sec 1.

46*. N.W. qr. of sec. 13, N. half of S.W. qr. of sec 13.

TOWNSHIP 15.

"The surface is generally level and low prairie, with a great marsh in the centre. The soil is, however, very rich, being a strong clay mixed with loam. There is a large quantity of the best quality of hay land.

"Very little large timber, but groves of small poplar with some scattering oak."

47*. S.W. qr. of sec. 12, N.W. qr. of sec. 1, 320 acres.

48. The S.E. qr. of sec. No. 24, and the N. half of the N.E. qr. of sec. 13, good dry prairie, 240 acres.

RANGE IV. EAST.

TOWNSHIP 3

"Is of the very best quality for agricultural purposes, having a deep black loam soil with a blue clay subsoil.

"In general, and especially along Mosquito Creek, the timber is of the larger class of poplar and balm of Gilead. Along the Rivière au Roseau there is a fringe of large sized oak, elm, ash, basswood, maple, balm of Gilead and poplar.

"This township is well watered, having Mosquito Creek in the north-east, and the Rivière au Roseau crossing it in the south."

49. The N.W. qr. of and the W. half of the N.E. qr. of sec. 12; part good wood land, soil good near the Roseau River; 240 acres.

50. The N.E. qr. of sec. 16, and the S. half of the S.E. qr. of sec. 21; soil first-class rolling prairie, near Roseau and the Pembina branch of the C. P. R.; 240 acres.

51. The N.W. qr. of sec. 33 and the W. half of the N.E. qr. of sec. 33; soil good, part hay land, near the Pembina branch of the C. P. R.; 240 acres.

52*. S.W. qr. of sec. 33 and E. half of S.E. qr. of sec. 32; 240 acres.

53. The S.E. qr. of sec. 33 and W. half of S.W. qr. of sec. 34. The above three pieces form a block of 720 acres, 6 miles from station on the Pembina branch.

54. The N.E. qr. of sec. 10 and the S. half of the S.E. qr. of sec. 15; soil first class, on the Roseau River; 240 acres.

55. The S.W. qr. of sec. 28 and N. half of N.W. qr. of sec. 21; 240 acres.

56. The S.E. qr. of sec. 28 and W. half of S.W. qr. of sec. 27; 240 acres.

57. The N.E. qr. of sec. 21 and N. half of S.E. qr. of sec. 21 ; 240 acres.

The above three pieces form a block of 720 acres, partly dry prairie and partly hay land ; soil first class ; 6 miles from the C. P. R.

58. The N.E. qr. of sec. 22 and the S. half of the S.E. qr. 27; part prairie and part wood ; high and dry ; 240 acres.

59. The N.E. qr. of and the E. half of the N.W. qr. of sec. 20; a level prairie with a ridge running through it ; 240 acres.

60*. N.E. qr. and E. half of N.W. qr. of sec. 35.

61*. S.W. qr. and S. half of N.W. qr. of sec. 5.

62*. S.W. qr. and S. half of N.W. qr. of sec. 1.

63*. S.E. qr. and S. half of N.E. qr. of sec. 2; 240 acres.

64*. N.W. qr. of section 7 and S. half of S.W. qr. of sec. 18 ; 240 acres.

65*. N.W. qr. of section 14. and S. half of S.W. qr. of sec. 23 ; 240 acres.

66*. N.E. qr. and N. half of S.E. qr. of sec. 36 ; 240 acres.

67*. S.E. qr. and S. half of N.E. qr. of sec. 7.

TOWNSHIP 5

"Is generally well adapted for agricultural purposes.

"The surface of this township, though level in parts, is considerably broken. The west branch of Rat River crosses the township from the south to the north, and its east branch runs through sections numbered 24, 25, 36, 35, and 34. Water is excellent in both streams. Some rafts of timber have already been made on the west branch, and taken down in the spring season. Oak, elm, ash and poplar are to be found along the banks of the streams, extending on either side from five to twenty chains. The timber is of good quality for building."

68. The S.W. qr. of and the S. half of the N.W. qr. of sec. 27; soil excellent, high dry prairie, four miles from the Pembina branch ; 240 acres.

69. The N.E. qr. of sec. 22 and the N. half of the N.W. qr. of sec. 22 ; dry prairie with 60 acres of hay land.

70. The S.W. qr. of section 17 and the E. half of the S.E. qr. of sec. 18, one mile from the railway, and two miles from Dufrost station ; 240 acres.

71. The N.W. qr. and N. half of S.W. qr. of sec. 9.

72. The S.E. qr. of and the E. half of the S.W. qr. of sec. 25. This is situate on the north branch of the Rat River, high dry prairie ; 240 acres.

73. The N.E. qr. of and the N. half of the S.E. qr. of sec. 30;

high dry prairie with 40 acres of hay land ; half a mile from the railway ; 240 acres.

74. The S.E. qr. of sec. 10 and N. half of N.E. qr. of sec. 3 ; 240 acres.

TOWNSHIP 6

"This township is well adapted for agricultural purposes, the ground undulating gently, excepting in the vicinity of Rat River, where several ravines with small elevations are to be met with. The main river, towards the south of this township, receives the waters of the two streams, the larger of which is called the western branch, and the smaller the eastern branch.

"On the banks of both these streams belts of timber are to be found consisting of oak, ash, elm and poplar."

75. The N.W. qr. of sec. 1 and the N. half of the N.E. qr. of sec. 1 and the S.E. qr. and the S. half of the S.W. qr. of sec. 12 ; soil good ; 480 acres.

76. The S.W. qr. of sec. 25 and the N. half of the N.W. qr. of sec. 24 ; soil first class, adjoining Mennonite Settlements ; 240 acres.

77. The E. half of sec. 24 and the S.E. qr. of sec. 25 ; 480 acres. The above two pieces form a block of 720 acres, 6 miles from Otterburne Station ; soil very good ; a small bluff of tamarac and poplar is situate on it.

78. The N.W. qr. of and the W. half of the N.E. qr. of sec. 22 ; soil first class ; high dry prairie ; 3 miles from Otterburne Station, Rat River, on the Pembina Branch, 240 acres.

79. The N.W. qr. of sec. 23 and the E. half of N.E. qr. of sec. 22, 240 acres.

80. The S.W. qr. of sec. 27 and the S. half of the S.E. qr. of sec. 27, 240 acres.

81. The S.E. qr. and S. half of S.W. qr. of sec. 28, 240 acres.

82. The N.W. qr. and N. half of S.W. qr. of sec. 28, 240 acres.

83. The N.E. of sec. 20 and W. half of N.W. of sec 21.

84. The S.E. qr. of sec. 32 and W. half of S.W. qr. sec. 33.

85. The N.E. of sec. 32 and E half N.W. qr. of sec. 32.

86. The N.W. qr. of sec. 33 and E. qr. of S.W. qr. of sec. 33.

87. The N. half of the N. half and the N. half of legal subdivisions 9, 10, 11 and 12 of sec. 7.

88. The N.W. qr. of sec. 34 and N. half of S.W. qr. of sec. 34.

89. The N.W. qr. and the N. half of S.W. qr. of sec. 36 ; soil good ; near Mennonite village ; 6 miles from Otterburne station ; 240 acres.

90. The S.E. qr. and the S. half of the N.E. qr. of sec. 35 ; soil good ; five miles from Otterburne station, on the Pembina Branch ; 240 acres.

TOWNSHIP 11—SPRINGFIELD.

"Townships Nos. 11 and 12.—The land in these townships is of the best quality, with few exceptions. There is a considerable quantity of timber."

91. The S.E. qr. of sec. 16 ; 6 miles from the city, situated in a flourishing settlement ; soil excellent ; 160 acres ; 90 acres dry prairie, balance good meadow.

92. The N.E. qr. of sec. 10 ; 20 acres ploughed ready for cultivation ; soil first-class, with wood lot of 20 acres ; 180 acres.

93. The N.E. qr. of sec. 24 ; soil first-class ; 35 acres fenced, 22 acres cultivated, a good log house and stable, a well with good water ; 10 miles from Winnipeg ; 160 acres and 20 acres wood lot, with very good timber.

TOWNSHIP 14—CLANDEBOYE

"Is generally level and dry, with the exception of part of sections 2, 3, 10 and 11, and a large morass extending from the centre of section 6 to the centre of section 17, which makes excellent hay lands. The soil is very suitable for farming purposes, especially that portion which is covered with short oak and hazel, being a dark friable loam."

94. The S.E. qr. of sec. 36 ; 18 acres under cultivation, house and stable erected ; 80 acres of good timber ; a small portion of hay land ; 160 acres.

TOWNSHIP 15

"Contains a soil of very good quality, and is timbered with large poplar, oak and willow. It is well watered by the Nipon Sipi or Netley Creek."

95. The S.E. qr. of sec. 31, and the N. half of the N.E. qr. of sec. 30 ; dry rolling prairie, 50 acres of wood land on Netley Creek, and 4 miles from the C.P.R. ; 240 acres.

96. The N.E. qr. of and the E. half of the N.W. qr. of sec. 5 ; part wood land, and balance dry prairie ; soil first-class ; excellent claim near Clandeboye settlement and the line of the C. P.R. ; 240 acres.

97*. The S.E. qr. of sec. 18 and the S. half of S.W. qr. of sec. 17.

"Is
Num
in th
town
east

98.
cash,

"T
spruc
of Ra
suppl
the s
cak
south
tural
ducin

99.
sec. 3

10

"T
the
large
spruc
10
all h
dolla
acres

10

sec.
class
of 20

10

240

10

E. q

RANGE V. EAST.

TOWNSHIP 2

"Is of first-class character, as it consists of rolling prairie. Numerous poplar bluffs, with considerable good meadow land in the eastern portion. There are boulders throughout the township. The Rivière au Roseau flows through the north-east part."

98. W. half of sec. 19 ; 320 acres ; five hundred dollars, $\frac{1}{4}$ cash, balance in three years, interest 12 per cent.

TOWNSHIP 3.

"The timber is principally poplar and bluffs of tamarac and spruce, which afford good building timber. The west branch of Rat Creek runs across the north-east corner of the township, supplying clear and good water. The Rivière au Roseau crosses the south-west corner. On its banks there is a good supply of oak and poplar fit for building purposes. The land in the southern part is high and dry and well adapted for agricultural purposes. There are large openings in the woods producing very good grass for hay and pasture."

99. The N.W. qr. of sec. 32 and N. half of the N.E. qr. of sec. 31 ; part wood land ; soil good ; 240 acres.

TOWNSHIP 10.

100. S.W. qr. sec. 35.

TOWNSHIP 12.

"The soil is of first-class quality excepting in the centre of the township, where it is inferior. The timber consists of large poplar, from twelve to eighteen inches in diameter, and spruce and tamarac in the swamps of similar dimensions."

101. The S.E. qr. and the S. half of the N.E. qr. of sec. 24, all heavily timbered ; adjoining Cook's Creek ; 240 acres ; two dollars and a-half per acre. Can be sold in wood lots of 20 acres.

102. The S.E. qr. of sec. 13 and the S. half of the N.E. qr. of sec. 13, heavily timbered ; adjoining above piece ; soil first-class ; 240 acres ; two dollars and a-half per acre. Wood lots of 20 acres can be purchased.

103*. S.W. qr. of sec. 33 and W. half of S.E. qr. of sec. 33 ; 240 acres.

104*. N.W. qr. of and W. half of N.E. qr. of sec. 23 ; the N. E. qr. of sec. 25 and the N. half of N.W. qr. of sec. 25 ; situate

on Cook's Creek ; part wooded, part prairie and part hay land ; 240 acres.

TOWNSHIP 13—STADACONA.

"It is well adapted for cultivation."

105. N.E. qr. of sec. 24 and N. half of S.E. qr. of sec. 24. This lot lies immediately to the east of Selkirk

RANGE VI. EAST.

TOWNSHIP 8—POINTE DU CHENE.

"The portion sub-divided is a level prairie, with a deep strong clay soil. The only woods are a few small bluffs of poplar and willow."

106. The S.W. qr. of sec. 9 and the N. half of the N.W. qr. of sec. 4, soil very good ; dry prairie ; 16 miles from Pembina Branch, C.P.R. ; 240 acres.

107*. S.W. qr. and W. half of N.W. qr. of sec. 20.

108*. S.W. qr. and S. half of N.W. qr. of sec. 3.

109*. N.E. qr. and N. half of S.E. qr. sec. 6.

110*. N.E. qr., fractional, and N—86 acres of N.W. qr. of sec. 35.

111*. N.W. qr. of sec. 18 and N. half pf S.W. qr. of 18 ; 240 acres.

TOWNSHIP 9

"Is chiefly level prairie. with a large portion of hay land on the south part.

"The Rivière La Seine runs through the south-west corner of the township, the water in which is fresh and good.

"The soil is generally a rich deep clay loam."

112. The N.W. qr. of sec. 5 and the E. half of the N.E. qr. of sec. 6 ; only one mile from Dawson Road and 24 miles from Winnipeg ; part dry prairie and part hay land ; 240 acres.

113. N.W. qr. of and N. half of N.E. qr. of sec. 23 ; dry prairie, soil very good ; above piece adjoining ; 240 acres.

114. The N.W. qr. of sec. 28 and the S. half of the S.W. qr. of sec. 33 ; soil very good, dry prairie ; 240 acres.

115. S.E. qr. of and E. half of S.W. qr. of sec. 1.

116. The S.W. qr. of sec. 32 and E. half of N.W. qr. of sec. 32.

TOWNSHIP 10—MILLBROOK

"Has generally a low, level surface, with a large quantity of hay land.

"This soil is for the most part a deep rich clay loam. There is scarcely any wood with the exception of some groves of poplar on the north-east corner, in which most of the timber is dead, owing to fire having run through them."

117. The S.W. qr. of sec. 4 and the S. half of the N.W. qr. of sec. 4; level prairie, 20 miles from Winnipeg; 240 acres.

118. The N.W. qr. of sec. 6; dry land prairie; 160 acres.

119. The N.W. qr. of sec. 12; 12 acres broken, partially fenced, a good house built on it, in a good settlement; soil good, part dry prairie, part hay land.

120. The N.E. qr. of sec. 23; high dry prairie, with some hay land, situate on a creek; 5 acres broken ready for cultivation; in a good settlement, 3 miles from a church and 20 miles from Winnipeg; 160 acres.

121. S.E. qr. of and E. half of S.W. qr. of sec. 1.

122. S.E. qr. of sec. 3 and E. half of S.W. qr. of sec. 3.

TOWNSHIP 11—ROSSMERE.

"The soil is a rich clay loam on the westerly two-thirds; the easterly third has a gravelly loam on the top of the ridges, in some places stony, and a rich loam at their foot. Over one-sixth of the area is taken up by marshy meadow, most of which would be unfit for cultivation; it is valuable for the hay it produces. The largest portion of this marshy land lies on the western side, and appears to be a good deal higher than the bottom of 'Cook's Creek,' into which it drains; most of it could be drained at very little cost. Several sections are all poplar.

"Water can be found by digging, at no great depth."

In this township we have sold over 5000 acres to actual settlers. The property offered for sale is convenient to wood and hay, and within twenty miles of Winnipeg.

123. The S.E. qr. of sec. 2 and the S. half of the N.E. qr. of sec. 2; high dry prairie, with some scrub land, soil very good; 240 acres.

124. The W. half of sec. 4; prairie land; a creek crosses through the lower west side of this lot; soil first-class; good building site; 320 acres.

125. The S.W. qr. of sec. 7 and the N. half of the N.W. qr. of sec. 6; part dry prairie and part hay land; soil very good; 15 miles from Winnipeg; 240 acres.

126. The N.W. qr. and N. qr. of S.W. qr. of sec. 9; two-thirds dry prairie, and the balance hay land, soil excellent, a first-class stock farm; 200 acres.

127. The S.E. qr. and S. half of N.E. qr. of sec. 3 ; prairie ; 240 acres.

128. The N.W. qr. of and the N. half of S.W. qr. of sec. 13 ; about 90 acres heavily timbered, the balance is prairie ; 240 acres.

129. The W. half of sec. 14, the S. half of the N.E. qr. of sec. 14 and the S.W. qr. of sec. 23 ; about 100 acres of wooded land, balance prairie and hay land ; 560 acres.

130. The N.W. qr. of sec. 7 and the S. half of the S.W. qr. of sec. 18 ; hay land ; 240 acres.

131. The S.W. qr. of sec. 6 and the S. half of the N.W. qr. of sec. 6 ; part hay land and part prairie ; 240 acres.

132. The S. half of the N.E. qr. of sec. 5 ; part hay land ; soil very good ; 80 acres.

133. The S.W. qr. of sec. 34 and the S. half of the N.W. qr. of sec. 34 ; first-class prairie land ; 240 acres.

134. The N.E. qr. of and the N. half of the S.E. qr. of sec. 19 ; good hay land ; 240 acres.

135. The S.W. qr. and S. half of N.W. qr. of sec. 28 ; part dry prairie, with some meadow land ; 240 acres.

136. N.W. qr. of 35 and N. half of N.E. qr of sec. 34.

137. S.E. qr. of sec. 27 and S. half of N.E. qr. of sec. 27.

138. S.W. qr. of sec. 25 and S. half of N.W. qr. of sec. 25.

TOWNSHIP 12—COOK'S CREEK.

"Rolling land, traversed by numerous ridges and marshes, mostly bearing north-west and south-east. Some of these marshes are very extensive and miry, though very valuable for their hay. Nearly half of the township is covered with poplar bush. There are several small creeks in the township, one of which is called 'Cook's Creek.' This being a spring creek, furnishes water during the whole year."

139. The W. half of the S.W. qr. of sec. 3 ; hay land ; 80 acres.

140. The S.W. qr. of sec. 15 and the E. half of the S.E. qr. of sec. 16 ; part prairie and part wood land ; soil very good ; 240 acres.

141. The S.E. qr. of sec. 22 and the S. half of the N.E. qr. of sec. 22 ; soil good ; 240 acres.

142. S. half of N. half of legal sub-divisions 3 and 4 sec. 20.

N. half of N. half " " 33 "

N. half of S. half " " 5 and 6 "

S. half of N. half " " 7 and 8 sec. 31.

N. half of S. half " " 7 and 8 "

Total 100 acres, at three dollars per acre.

TOWNSHIP 13—STADACONA.

143. The S.W. qr. of sec. 34 and N. half of S.W. qr. of sec. 27; 240 acres.
144. N.E. qr. of sec. 20 and W. half of N.W. qr. of sec. 21.
145. S.E. qr. and S. half of N.E. qr. of sec. 13.
146. S.W. qr. and S. half of N.E. qr. of sec. 13.
147. N.E. qr. and E. half of N.W. qr. of sec. 32.

TOWNSHIP 14.

148. S.E. qr. of sec. 3 and N. half of N.E. qr. of sec. 3.

RANGE VII. EAST.

TOWNSHIP 8—POINTE DU CHENE.

"The westerly part comprises the following part of flourishing settlement of 'Oak Point.' The remainder of the Township is wooded with poplar, spruce and willow. The northerly part contains building timber, elsewhere the timber is fit for firewood only. The Dawson Road crosses this township. The soil is generally sandy. The south-easterly part is all marsh."

149. N.E. qr. and N. half of S.E. qr. of sec. 31, two dollars per acre.
150. N.E. qr. of sec. 33 and W. half of N.W. qr. of sec. 34.

TOWNSHIP 9—CALEDONIA.

151. S.E. qr. of and S. half of N.E. qr. of sec. 1.

TOWNSHIP 11.

- 152*. N.W. qr. of sec. 21 and N. half of S.W. qr. of sec. 21.
- 153*. N. half of N. half of sec. 32 and N. half of N.E. qr. of sec. 31.
154. The S.E. qr. of sec. 7 and the N. half of the N.E. qr. of sec. 6, wood land, soil good, 240 acres.

TOWNSHIP 12.

- 155*. S.E. qr. of sec. 10 and N half of N.E. qr. of sec. 3.
156. N.W. qr. of sec. 13 and N. half of S.W. qr. of sec. 13.

RANGE VIII. EAST.

TOWNSHIP 11.

"The principal timber is spruce and juniper. The Broken Head River flows through the eastern part of the township. On its banks there are fine groves of hardwood."

157. The S.W. qr. of and the S. half of the N.W. qr. of sec. 5, high dry land, 240 acres.

TOWNSHIP 13—WOLSELEY.

158. S.W. qr. of 21 and N. half of N.W. qr. of 16.

159*. S.E. qr. of sec. 3 and W. half of S.W. qr. of sec. 2.

160*. S.W. qr. of sec. 5 and E. half of S.E. qr. of sec. 6.

RANGE I. WEST.

TOWNSHIP 6—SCRATCHING RIVER.

161. The E. half and S.W. qr. of sec. 15 and the N.W. qr. of sec. 14, situate near the Scratching River; 640 acres.

TOWNSHIP 9—RIVER SALLE.

"It is suitable for grazing purposes. That portion contiguous to the River Salle is wooded and watered, and is well adapted to crop raising."

162. The S.E. qr. of sec. 9 and the N. half of the N.E. qr. of sec. 4. The River Salle runs through this land and drains it; soil first class, adjoining a settlement; 240 acres.

163. The S.E. qr. of sec. 1 and the S. half of N.E. qr. of sec. 1. The greater part is good dry prairie, and near the River Salle, 240 acres.

164. The S.W. qr. of sec. 2 and the E. half of the S.E. qr. of sec. 3. This is a choice piece of land and is crossed by the River Salle, 240 acres.

165. The S.W. qr. of sec. 4 and the S. half of the N.W. qr. of sec. 4, near the River; good dry prairie, 240 acres.

166. The N.W. qr. of and the N. half of the S.W. qr. of sec. 18. Good dry prairie, 240 acres.

167. The S.W. qr. of and S. half of N.W. qr. of sec. 16.

TOWNSHIP 12.

168. The S.W. qr. of sec. 25 and the S. half of the N.W. qr. of sec. 25; 10 acres wooded land, balance dry prairie, with some meadow land, 240 acres.

TOWNSHIP 13.

"The south and west parts of this township are prairie. The north is well wooded with poplar. Fire has run through the principal portion of the bush. The land is generally of good quality where the groves of wood occur. It is slightly stony."

169. N. half of N. half of sec. 23, and N. half of N.W. qr. of

sec. 24 ; 25 acres wood not more than $1\frac{1}{2}$ miles from railroad running west ; 240 acres.

TOWNSHIP 14—ARGYLE

" Consists of groves of poplar and glades of prairie. The prairie and bush are about equally divided. A large portion of the latter has been killed by fire. Good water can be obtained by digging wells."

170. The N.E. qr. of and N. half of S.E. qr. of sec. 13. Good dry prairie ; 240 acres.

RANGE II, WEST.

TOWNSHIP 9.

171. The N.E. qr. of sec 25 and the S. half of the S.E. qr. of sec. 36.

On the River Salle, dry prairie, with some hay land, 240 acres.

RANGE III, WEST.

TOWNSHIP 13—POPLAR HEIGHTS.

" About three-fourths of this township is good arable prairie, well adapted for settlement. It is near the leading line of road along the north bank of the River Assiniboine, and close to it are the extensive meadows of Long Lake.

" Plenty of good fencing and building timber may be found along the ridges which cross the northern part of the township. North of these ridges the land becomes gravelly and stony, and is fit only for grazing purposes."

172. N.W. qr. fractional sec. 4 ; S.E. qr. fractional sec. 4 ; N. half fractional sec. 5 ; 237 $\frac{48}{100}$ acres ; will be in vicinity of railroad running west from Winnipeg or Selkirk.

TOWNSHIP 16—SIMONET.

" Is all good farming land, undulating prairie, with scattered groves of poplar of moderate size.

" Adjoins the western shore of Shoal Lake."

173. The S.E. qr. of sec. 24 and the N. half of the N.E. qr. of sec. 13 ; soil good ; dry prairie near Shoal Lake ; 240 acres.

174. S.W. qr. of sec. 33 and the N. half of the N.W. qr. of sec. 28 ; soil good. The trail from Winnipeg to Oak Point crosses this land ; 240 acres.

175. The S.W. qr. of sec. 31 and the W. half of the S.E. qr. of sec. 31, situate near settlement of St. Laurent; 240 acres.

176*. S.W. qr. of sec. 20 and N. half of N.W. qr. of sec 17; 240 acres.

177*. S.W. qr. of sec. 28 and S. half of N.W. qr. of sec. 28; 240 acres.

178*. N.W. qr. of sec. 31 and W. half of N.E. qr. of sec. 31; 240 acres.

179*. N.E. qr. of sec. 6 and S. half of S.E. qr. of sec. 7; 240 acres.

180*. S.E. qr. of sec. 32 and W. half of N.E. qr. of sec. 32; 240 acres.

181*. S.W. qr. of sec. 36 and N. half of N.W. qr. of sec. 25; 240 acres.

TOWNSHIP 17—BELCOURT.

"Is well suited for settlement; has an undulating surface, good soil, and a fair supply of timber for fuel, fencing and such buildings as would require pieces of no great size.

"Has no streams, but water can be obtained by digging."

182*. S.E. qr. of sec. 4 and W. half of S.W. qr. of sec. 3; 240 acres.

183*. S.W. qr. of sec. 18 and N. half of N.W. qr. of sec 7; 240 acres.

RANGE IV. WEST.

TOWNSHIP 6.

184. The E. half of sec. 31.

TOWNSHIP 7—BOYNE SETTLEMENT.

"About twenty-six square miles of this township are beautiful undulating prairie, with sandy loam soil.

"Wood is within a short distance of every part of the township."

185. The N.W. qr. of sec. 2, soil first-class; near Boyne Settlement; 160 acres.

186. The N.E. qr. of sec. 3, adjoining the above piece, of same quality, forming a block of 320 acres; 160 acres.

TOWNSHIP 13—OSSOWO.

"A very attractive township for settlement; the soil is excellent in quality, being a rich clay loam. Along the ridge in the northern part of the township is plenty of timber for fence-

ing, fuel and building purposes. 'Long Lake' affords an abundant supply of good water, and the meadow lands in the vicinity are extensive and good."

187. S.W. qr. of sec. 15, 50 acres oak.

188. The N.E. qr. of fractional sec. 10, S.E. qr. of fractional sec. 10, 206½ acres.

Both of the above pieces will be in the vicinity of railroads running west from Winnipeg or Selkirk; terms, ¼ cash, balance in 3 years, with interest at 12 per cent.

189. N.W. qr. fractional of sec. 12 and (87.53 acres) the S.W. qr. fraction of sec. 12 (52.55 acres) = 140.08 acres.

190. N. half of sec. 14 and legal subdivisions, 1, 7 and 8 of sec. 14; 440 acres.

TOWNSHIP 14—BERLIN

"Is better adapted for grazing and stock-raising than for farming. The south and east portions are stony and gravelly; the north and west are free from stones, and have a slightly deeper soil, while here and there are many fine prairie glades."

191. Sec. 31, soil good, principally dry prairie with some hay land; 640 acres.

192. The N. half of sec. 32, soil good, dry prairie land; 320 acres.

This adjoins the above piece, and thus forms a block of 960 acres.

TOWNSHIP 17—BELCOURT.

193. The W. half fractional of sec. 17, and S. half of S.W. qr. of sec. 20; 240 acres.

194. The N.W. qr. of sec. 22 and the S. half of S.W. qr. of sec. 27; 240 acres.

195. The S.W. qr. of sec. 34 and S. half of N.W. qr. of sec. 34; 240 acres.

RANGE V. WEST.

TOWNSHIP 6—BOYNE.

"The surface of this township is generally level, with a slight inclination towards the Boyne River for about a mile and a half on either side of the river.

"The soil is a black loam.

"The township is well watered by the River Boyne passing through the centre, running from west to east."

196. The S. half of sec. 5, soil very good prairie, with some wood land ; 320 acres.

TOWNSHIP 13.

197. The N.E. qr. of sec 36 and E. half of N.W. qr. of sec. 36 ; 240 acres.

198. The S.E. qr. of sec. 33 and N. half of N.E. qr. of sec. 28 ; 240 acres.

199. The N.W. qr. of sec. 7 and the S. half of the S.W. qr. of sec. 18 ; 240 acres.

200. The N.W. qr. and the N. half of the N.E. qr. of sec. 30 ; 240 acres.

RANGE VI. WEST.

TOWNSHIP 3—THORNHILL.

"Prairie and woodland. The greater portion of the township is rather stony."

201. The E. half of sec. 3 ; soil first-class prairie, with a small portion of wood land ; only a few miles from a store and post office ; 320 acres.

TOWNSHIP 8

"Is well adapted for settlement, being well watered, with abundance of timber and hay. The soil is light but fertile. The timber is chiefly poplar and oak, of sufficient size for building and fencing."

202. The S.E. qr. of sec. 32 and S. half of N.E. qr. of sec. 32 ; 240 acres.

203. The S.W. qr. of sec. 28 and S. half of N.W. qr. of sec 28 ; 240 acres.

TOWNSHIP 10.

"The hills are covered with small poplar, light brush and scrubby oak. The low lands are well timbered with oak, black ash and basswood, and are well watered."

204. The N.E. qr. of sec. 9 and S. half of S.E. qr. of sec. 16 ; 240 acres.

205. The S.E. qr. of sec. 20 and N. half of N.E. qr. of sec. 17 ; 240 acres.

206. The N.E. qr. of sec. 19 and the W. half of N.W. qr. of sec. 20 ; 240 acres.

207. The S.E. qr. of sec. 15 and the N. half of N.E. qr. of sec. 10 ; 240 acres.

TOWNSHIP 13—HIGH BLUFF.

"This may be justly considered a most desirable locality for settlement.

"There are numerous wooded groves towards the north part of the township, and the soil is everywhere most excellent for farming purposes.

"Abundance of good water can be had at a depth of from six to eight feet in the low grounds, and from twelve to twenty feet in the high grounds."

208. The N.E. qr. of sec. 14, high rolling prairie; 160 acres.

RANGE VII. WEST.

TOWNSHIP 4—PEMBINA MOUNTAINS

"Is heavily timbered with oak and poplar. There are also some elm, ash, maple and white birch. There is not one section of prairie land in the township, but there are some clearings made by recent fires. There are numerous creeks of good water running down the sides of these mountains. No fixed rocks are visible, but boulders may be met with occasionally."

209. The S.W. qr. of sec. 30; principally wood land; soil first-class; 160 acres.

210. The N.E. qr. and the W. half of sec. 36; soil first-class; adjoining a good settlement; 480 acres.

TOWNSHIP 14.

"This township borders on Lake Manitoba. It consists of very fine prairie land, well watered by several streams which discharge into the lake.

"There is very little timber in this township."

211. The S.E. qr. of sec. 5; very good hay land; 160 acres.

RANGE VIII. WEST.

TOWNSHIP 13

"Is composed of prairie. There is only one grove of small oak woods. This lies between sections thirty-five and thirty-six.

"The land on the east of Rat Creek is dry rolling prairie of

excellent quality, that on the west is low and marshy, with exception of a small strip of dry prairie about ten chains wide, lying along the White Mud Road"

212. The N.W. of sec. 36; soil very good; in a good settlement and near Lake Manitoba; 160 acres.

TOWNSHIP 14—TOTOGAN

"Borders on Lake Manitoba, and is composed of beautiful prairie land with very little timber."

213. The S.W. qr. of sec. 1. This adjoins the above piece, and is good soil, with a portion of hay land; 160 acres.

214. S.E. qr. of sec. 2 adjoins the above piece; 40 acres oak timber; $\frac{1}{4}$ cash, balance in three years, interest 12 per cent.

215. S.E. qr. of sec. 5; most desirable farm; terms same as above.

RANGE IX. WEST.

TOWNSHIP 12.

"The greater part of this township is open, and a good deal of prairie.

"The soil, with the exception of that in a few sections, is very good, being chiefly black clay loam, and is well fitted for agriculture.

"Water can be easily obtained, except in the north-easterly part of the township, where it is necessary to dig for it."

216. N.W. qr. of sec. 6 and S. half of S.W. qr. of sec. 7; 240 acres; four hundred dollars; terms $\frac{1}{4}$ cash, balance in 3 years, interest 12 per cent.

RANGE X. WEST.

TOWNSHIP 14—WOODSIDE.

"This township offers great inducements to the settler. Its soil is in most places a very rich and deep black mould, resting on a marl subsoil.

"There is plenty of timber for fencing and fuel."

217. S.W. qr. of sec. 33; 160 acres; $\frac{1}{4}$ cash, balance 3 years, 12 per cent.

RANGE XII. WEST.

TOWNSHIP 14—LIVINGSTONE

"Is well suited for settlement. The soil is excellent. Water is abundant and good. Timber is plentiful, and distributed in belts and groves all through the township.

"The White Mud River passes along the northern part of the township. A chain of small lakes, the water of which is good, stretch along the southern part."

218. The N. half of sec. 32; soil very good, dry prairie; five miles from mills, stores, etc.; 320 acres.

TOWNSHIP 15

"Is well adapted for agricultural purposes, having excellent hay land."

220. The S. half of sec. 4; adjoining the above piece; soil very good; 320 acres.

RANGE XVII. WEST.

TOWNSHIP 15.

"A belt of good heavy poplar timber runs diagonally across the township from south-west to north-east, occupying one-half of its area."

221. E. half of sec. 35; 320 acres.

There is an excellent water power on this lot, together with about 60 acres of excellent timber; $\frac{1}{4}$ cash, balance in 5 years with interest at 12 per cent.

222. The N.E. qr. of sec. 23; 160 acres; has a splendid site for a saw mill, together with about 75 acres of good timber; terms same as above.

RANGE XVIII. WEST.

TOWNSHIP 15

"Is well wooded and watered. The Little Saskatchewan River winding from its northern to its southern limit in a lovely valley. There are several beautiful small lakes; the waters for the most part are good, although some few are alkaline. Also abundance of good hay land. The Saskatchewan trail crosses the centre of the township."

223. N.E. qr. of sec. 13; 160 acres. Terms, same as above.

PARISH OF KILDONAN.

224. Lot No. 50 ; (6) six chains wide ; on Red River, four and a-half miles from Wiunipeg ; 69 4-10 acres.

PARISH OF ST. PAUL.

224. Lot No. 134 ; 6½ chains wide. Good house.
225. Lot No. 78.

PARISH OF ST. CLEMENTS.

226. Park Lot E, 35 acres, \$225.

CITY OF WINNIPEG.

227. Lot 36, east side of Main Street, Logan Estate, a good frame dwelling-house 24x30, \$850.

228. Lots 347, 348, 349 350, 508, 509, and 511, on the Brown-Burrows Estate, price \$70 each.

229. Lots 48 and 49, west, McWilliams Estate, opposite Dufferin Park, \$200 each.

230. Lot 70, Logan Estate, \$250.

231. Lot 237, Burrows-Mulligan Estate, on Portage Road, \$200.

232. Lots 57, 58 and 59, Lang Estate, \$200 each.

233. Lots 36, 39, 40 and 41, McWilliams Estate.

TOWN OF SELKIRK.

234. Lot 39, being a sub-division of lot 65 Dominion Government Survey.

N.B.—All lands marked (*) terms ½ cash, balance in three years, with interest at 12 per cent., and it is desired to sell to actual settlers only on these terms.

Titles to the above lands are perfect.

Lands bought on commission.

We can select only the best offering. For further particulars apply to

ROSS, ROSS & KILLAM,

Barristers, &c., Winnipeg.

