

**CIHM  
Microfiche  
Series  
(Monographs)**

**ICMH  
Collection de  
microfiches  
(monographies)**



**Canadian Institute for Historical Microreproductions / Institut canadien de microreproductions historiques**

**© 1994**

Technical and Bibliographic Notes / Note: techniques et bibliographiques

The Institute has attempted to obtain the best original copy available for filming. Features of this copy which may be bibliographically unique, which may alter any of the images in the reproduction, or which may significantly change the usual method of filming, are checked below.

L'Institut a microfilmé le meilleur exemplaire qu'il lui a été possible de se procurer. Les détails de cet exemplaire qui sont peut-être uniques du point de vue bibliographique, qui peuvent modifier une image reproduite, ou qui peuvent exiger une modification dans la méthode normale de filmage sont indiqués ci-dessous.

- Coloured covers/  
Couverture de couleur
- Covers damaged/  
Couverture endommagée
- Covers restored and/or laminated/  
Couverture restaurée et/ou pelliculée
- Cover title missing/  
Le titre de couverture manque
- Coloured maps/  
Cartes géographiques en couleur
- Coloured ink (i.e. other than blue or black)/  
Encre de couleur (i.e. autre que bleue ou noire)
- Coloured plates and/or illustrations/  
Planches et/ou illustrations en couleur
- Bound with other material/  
Relié avec d'autres documents
- Tight binding may cause shadows or distortion  
along interior margin/  
La reliure serrée peut causer de l'ombre ou de la  
distorsion le long de la marge intérieure
- Blank leaves added during restoration may appear  
within the text. Whenever possible, these have  
been omitted from filming/  
Il se peut que certaines pages blanches ajoutées  
lors d'une restauration apparaissent dans le texte,  
mais, lorsque cela était possible, ces pages n'ont  
pas été filmées.
- Additional comments: /  
Commentaires supplémentaires:

- Coloured pages/  
Pages de couleur
- Pages damaged/  
Pages endommagées
- Pages restored and/or laminated/  
Pages restaurées et/ou pelliculées
- Pages discoloured, stained or foxed/  
Pages décolorées, tachetées ou piquées
- Pages detached/  
Pages détachées
- Showthrough/  
Transparence
- Quality of print varies/  
Qualité inégale de l'impression
- Continuous pagination/  
Pagination continue
- Includes index(es)/  
Comprend un (des) index

Title on header taken from: /  
Le titre de l'en-tête provient:

- Title page of issue/  
Page de titre de la livraison
- Caption of issue/  
Titre de départ de la livraison
- Masthead/  
Générique (périodiques) de la livraison

This item is filmed at the reduction ratio checked below/  
Ce document est filmé au taux de réduction indiqué ci-dessous.

10X	12X	14X	16X	18X	20X	22X	24X	26X	28X	30X	32X
<input type="checkbox"/>	<input type="checkbox"/>	<input type="checkbox"/>	<input type="checkbox"/>	<input type="checkbox"/>	<input type="checkbox"/>	<input checked="" type="checkbox"/>	<input type="checkbox"/>	<input type="checkbox"/>	<input type="checkbox"/>	<input type="checkbox"/>	<input type="checkbox"/>

The copy filmed here has been reproduced thanks to the generosity of:

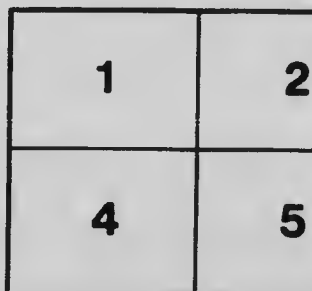
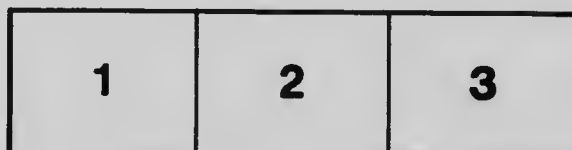
National Library of Canada

The images appearing here are the best quality possible considering the condition and legibility of the original copy and in keeping with the filming contract specifications.

Original copies in printed paper covers are filmed beginning with the front cover and ending on the last page with a printed or illustrated impression, or the back cover when appropriate. All other original copies are filmed beginning on the first page with a printed or illustrated impression, and ending on the last page with a printed or illustrated impression.

The last recorded frame on each microfiche shall contain the symbol  $\rightarrow$  (meaning "CONTINUED"), or the symbol  $\nabla$  (meaning "END"), whichever applies.

Maps, plates, charts, etc., may be filmed at different reduction ratios. Those too large to be entirely included in one exposure are filmed beginning in the upper left hand corner, left to right and top to bottom, as many frames as required. The following diagrams illustrate the method:



L'exemplaire filmé fut reproduit grâce à la générosité de:

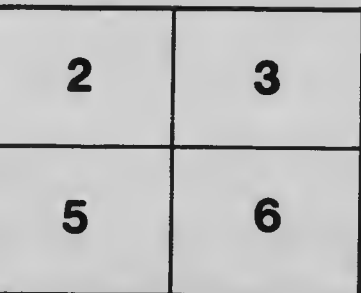
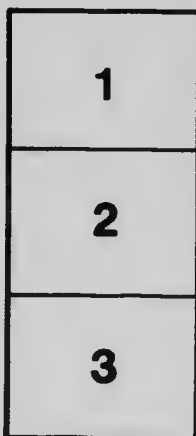
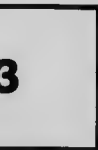
Bibliothèque nationale du Canada

Les images suivantes ont été reproduites avec le plus grand soin, compte tenu de la condition et de la netteté de l'exemplaire filmé, et en conformité avec les conditions du contrat de filmage.

Les exemplaires originaux dont la couverture en papier est imprimée sont filmés en commençant par le premier plat et en terminant soit par la dernière page qui comporte une empreinte d'impression ou d'illustration, soit par le second plat, selon le cas. Tous les autres exemplaires originaux sont filmés en commençant par la première page qui comporte une empreinte d'impression ou d'illustration et en terminant par la dernière page qui comporte une telle empreinte.

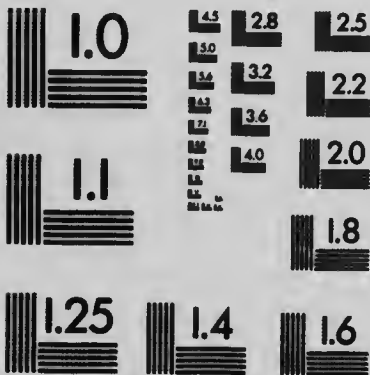
Un des symboles suivants apparaîtra sur la dernière image de chaque microfiche, selon le cas: le symbole  $\rightarrow$  signifie "A SUIVRE", le symbole  $\nabla$  signifie "FIN".

Les cartes, planches, tableaux, etc., peuvent être filmés à des taux de réduction différents. Lorsque le document est trop grand pour être reproduit en un seul cliché, il est filmé à partir de l'angle supérieur gauche, de gauche à droite, et de haut en bas, en prenant le nombre d'images nécessaire. Les diagrammes suivants illustrent la méthode.



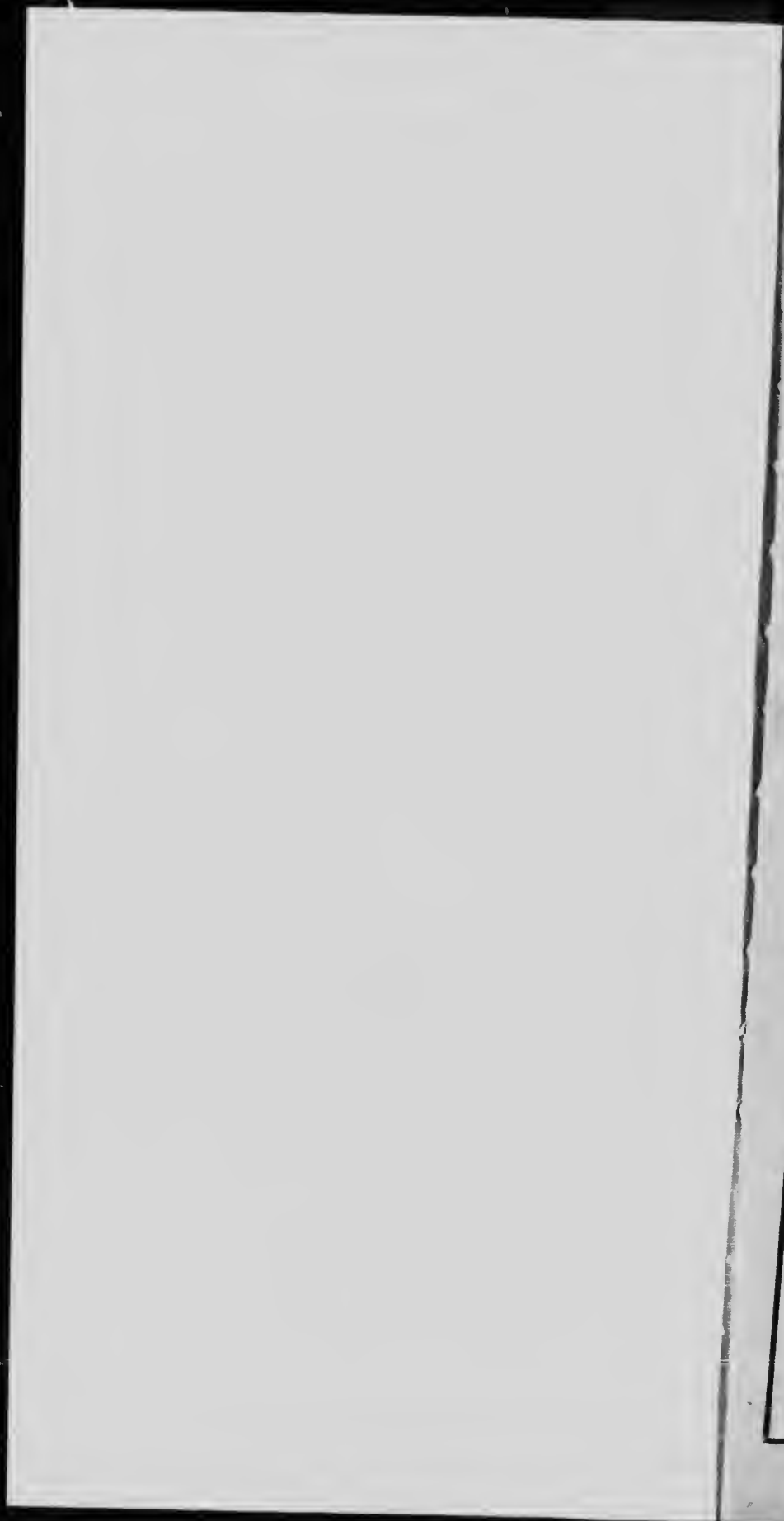
# MICROCOPY RESOLUTION TEST CHART

(ANSI and ISO TEST CHART No. 2)



**APPLIED IMAGE Inc**

1653 East Main Street 14609 USA  
Rochester, New York  
(716) 482 - 0300 - Phone  
(716) 288 - 5889 - Fax



OPEN SEASONS  
— FOR —  
GAME AND FISH

A SYNOPSIS OF LAWS GOVERNING SHOOTING  
AND FISHING IN THE PROVINCES AND  
STATES TRAVERSED BY THE

CANADIAN PACIFIC RAILWAY  
AND ITS CONNECTIONS

1905

SK 471  
A 2  
C 33

# The Canadian Pacific Railway

Is the most Substantial and Perfectly Built Railway on the Continent of America, and superbly equipped with the finest rolling stock modern skill can produce. **The Coaches, Dining and Sleeping Cars** are triumphs of luxurious elegance, and excel in stability and beauty of finish any other in the world.

**TOURISTS** will find the Route through Canada from the Atlantic to the Pacific unapproached for magnificence and variety of scenery by any other line of travel. The rugged wildness of the North Shore of Lake Superior, the picturesque Lake of the Woods gold region, the billowy Prairies of the Canadian North-west, the stately grandeur of the Rockies, the marvels of the Selkirks and Gold Range, and the wondrous beauty of the Pacific Coast are traversed by this Railway. Being entirely controlled and managed by one Company, the **CANADIAN PACIFIC RAILWAY** offers special advantages to transcontinental travellers that cannot be given by any other line. It is the Best, the Safest and Fastest Route from Ocean to Ocean. The Company has spared no expense in providing for the wants and comfort of its patrons, as its line of Dining Cars and Mountain Hotels will at all times testify, being supplied with all that the most fastidious can desire. Through the Mountains Observation Cars are run in the Tourist Season.

## THE ROYAL MAIL STEAMSHIPS

**"EMPRESS OF INDIA"      "EMPRESS OF JAPAN"**  
**"EMPRESS OF CHINA"**  
**"TARTAR" and "ATHENIAN"**

placed on the Pacific by the Canadian Pacific Railway Company, bring that wonderland, Japan, within the reach of all. Sixty days from New York will admit of one month's holiday in Japan.

## THE CANADIAN-AUSTRALIAN ROYAL MAIL LINE

**R.M. S.S. "MOANA"      "MIOWERA"**  
**and "AORANGI"**

Between Vancouver and Victoria, B.C., and Sydney, New South Wales, via Honolulu, Hawaiian Islands, Suva, Fiji, and Brisbane, Queensland, is the shortest and most attractive route to the Tropics and Antipodes.

## CANADIAN PACIFIC RY. CO.'S ATLANTIC STEAMSHIP SERVICE

**"LAKE MANITOBA"      "LAKE ERIE"**  
**and "LAKE OHAMPLAIN"**

Between Montreal, Quebec and Liverpool  
via the delightful St. Lawrence Route.

Through Tickets from Halifax, St. John, N.B., Quebec, Montreal, Ottawa, Prescott, Brockville, Toronto, Hamilton, London, and all points in Canada; also from New York, Boston, and all points in the East, to Vancouver, Victoria, Skagway, Dawson, Alton, and other points in British Columbia and Alaska, and to Portland, Ore., Puget Sound Ports, San Francisco, Japan, China, Philippines, Coraa, Straits Settlements, India, Hawaiian and Fijian Islands, New Zealand, Australia, and around the World.

**INSIST ON GETTING YOUR TICKETS VIA  
THE CANADIAN PACIFIC RY.**

**RATES ARE THE LOWEST**



# Open Seasons

## FOR GAME AND FISH

A Synopsis of Laws Governing Shooting and Fishing in  
the Provinces and States traversed by the

### CANADIAN PACIFIC RAILWAY AND ITS CONNECTIONS

#### REGULATIONS APPLICABLE GENERALLY IN PROVINCES AND STATES.

The Provincial and State laws generally prohibit possession or sale or transportation in the close season for game or fish, except that after the open season closes a short time is allowed in some states and provinces, but in many export is illegal at any time.

Netting game fish or catching or killing them by drugs, explosives, etc., or by any other means than hook and line is forbidden.

Insectivorous and song birds, and nests and eggs of all birds, except birds of prey, are protected at all times.

Netting or snaring game birds, or killing by any other mode than shooting is illegal.

Night shooting is generally prohibited.

Streams or lakes leased to individuals or clubs cannot be fished by the public, though in many cases persons properly introduced may obtain fishing.

Licenses should be kept in personal possession of the sportsman at all times, as they are subject to production on demand of game wardens.

#### PROVINCE OF QUEBEC

(OPEN SEASON).

##### HUNTING.

**BIG GAME.**—Moose and Deer, September 1st to December 31st, inclusive, excepting Ottawa and Pontiac Counties.

Moose and Deer in Ottawa and Pontiac Counties, October 1st to November 30th, inclusive.

Caribou, September 1st, to January 31st, inclusive.

Bear, August 20th to June 30th, inclusive.

No more than one moose, two deer, and two caribou may be killed in one season by any one person.

Owing to the fact that the Game Laws are frequently changed, absolute accuracy is not guaranteed.

Dogs may be used to hunt red deer only between October 20th and November 1st.

No person owning, having or harboring any dog accustomed to hunt and pursue deer shall allow such dog to run at large, hunt or pursue in any places inhabited by deer, between November 1st of one year and October 20th of following year, under a penalty of a fine, and any one may, without incurring responsibility, kill any such dog found running at large, hunting or coursing in such localities between the above mentioned dates.

The young of deer, moose or caribou, if only one year old or less, must not be killed.

Cow moose must not be killed at any time.

**OTHER GAME.**—Mink, otter, marten, pekan, fox and lynx, November 1st to March 31st, inclusive.

Beaver are protected until November 1st, 1905.

Hare, November 1st to January 31st, inclusive.

Muskrat, April 1st to April 30th, inclusive.

**GAME BIRDS.**—Curlew, plover, sandpiper, snipe, tattler, woodcock, September 1st to January 31st, inclusive.

Birch partridge, spruce partridge, September 1st to December 14th, inclusive.

White partridge, ptarmigan, November 1st to January 31st, inclusive.

Widgeon, teal or wild duck of any kind, except shel-drake, loons, gull, penguin and sea parrots, September 2nd to February 28th inclusive.

#### EAST AND NORTH OF SAGUENAY RIVER.

Regulations for that part of the counties of Chicoutimi and Saguenay to the east and north of the River Saguenay are the same as the foregoing, except for the following the open season is as shown:

Caribou, September 1st to February 28th, inclusive (and not more than four caribou may be killed in one season).

Hare, October 15th to March 14th, inclusive.

Muskrat, November 1st to March 31st, inclusive.

Otter, October 15th to April 1st, inclusive.

Grey and spruce partridge, September 15th to January 31st, inclusive.

White partridge and ptarmigan, November 1st to February 28th, inclusive.

#### HUNTING LICENSE.—Entire Province.

**NON-RESIDENTS** are required to obtain licenses to hunt, which may be procured on application to General Passenger Agent, C. P. Ry., Montreal, through any agent of the C. P. Ry.

The fee for hunting license for non-residents is \$25.00 for season.

---

Owing to the fact that the Game Laws are frequently changed, absolute accuracy is not guaranteed.

## WASTE OF GAME.

No person who has killed or taken any bird or animal suitable for food shall allow the flesh thereof to be destroyed or spoilt, and no person who has killed or taken a fur-bearing animal shall allow the skin thereof to be destroyed or spoilt.

## TRANSPORTATION.—Entire Province.

After the first fifteen (15) days of the close season all public carriers are forbidden to transport any game or portions or hides thereof.

## FISHING.

### (ENTIRE PROVINCE.)

Bass, June 16th to April 14th, inclusive.  
Mascalonge, July 2nd to May 24th, inclusive.  
Ouananiche, December 2nd to September 14th, inclusive.  
Pickerel (dore), May 16th to April 14th, inclusive.  
Salmon, February 2nd to August 14th, inclusive.  
Speckled trout, May 1st to September 30th, inclusive.  
Lake trout, grey trout, or lunge, December 2nd to October 14th, inclusive.  
Whitefish, December 2nd to November 9th, inclusive.

## LICENSE.

NON-RESIDENTS are required to procure licenses to fish, which may be obtained on application to the General Passenger Agent, C. P. Ry., Montreal, through any agent of the Company. License fee, \$10.00.

## TRANSPORTATION.—Entire Provinces.

### EXPORT OF CERTAIN KINDS OF TROUT PROHIBITED.

No one shall receive, ship, transport or have in possession for the purpose of shipping or transporting out of the Dominion of Canada any speckled trout, river trout or sea trout, taken or caught in the Provinces of Ontario, Quebec, New Brunswick, Nova Scotia and Prince Edward Island; provided:—

(a) Any person may so ship such trout caught by him for sport, to the extent of 25lbs. in weight, if the shipment is accompanied by a certificate to that effect from either the local fishery officer in whose district the fish were caught or from the local station agent adjacent to the locality in which they were caught, or is accompanied by copy of the official license or permit issued to the person making the shipment.

(b) No single package of such trout shall exceed 25 lbs. in weight, nor shall any person be permitted to ship more than one package during the season.

## PROVINCE OF ONTARIO

### (OPEN SEASON).

## HUNTING.

BIG GAME.—Deer, November 1st to November 15th.  
Moose, caribou, reindeer, north of the Main Line Canadian Pacific Railway from Mattawa to the Manitoba boundary, inclusive, October 16th to November 15th.

---

Owing to the fact that the Game Laws are frequently changed, absolute accuracy is not guaranteed.

Moose, reindeer or caribou, south of the Main Line Canadian Pacific Railway from Mattawa to the Manitoba boundary, November 1st to November 15th.

Elk, wapiti, must not be hunted at any time.

Bear, all year.

Cow moose must not be hunted at any time.

No more than two deer, one bull moose or one bull caribou or reindeer may be killed in one season by any one person.

Dogs may be used hunting deer, but must not be allowed to run at large during close season.

The young of moose, reindeer or caribou, if only one year old or less, must not be hunted at any time.

**OTHER GAME.**—Beaver and otter are protected until 1910.

Fox (yellow or red), at all times.

Hare, October 1st to December 31st.

Muskrat, January 1st to April 30th (must not be shot during April).

Cotton Tail Rabbits, at all times by owners of land, etc., but must prove damage being done.

Squirrels (black and grey), September 15th to December 15th.

**GAME BIRDS.**—Grouse, pheasant, partridge, woodcock, snipe, rail, plover, or any other birds known as shore birds or waders, September 15th to December 15th.

Prairie fowl, English or Mongolian pheasant, protected until 1910.

Wild duck of all kinds and any other waterfowl, September 1st to December 15th.

Quail, November 1st to November 30th.

Swans or geese, September 15th to April 30th.

Wild turkeys, protected until 1910.

Capercaillie, protected until September 15th, 1909.

Wild duck, geese, or other waterfowl must not be hunted from sail boat, yachts or launches propelled by steam or other power.

Hunting on Sunday is prohibited.

#### HUNTING LICENSE.

**NON-RESIDENTS** are required to obtain licenses to hunt, the fee for which is \$25.00 for season.

**RESIDENTS** of Province of Ontario are required to obtain licenses to hunt deer, the fee for which is \$2.00, and to hunt moose, reindeer or caribou, the fee for which is \$5.00. Licenses may be procured on application to General Passenger Agent, C. P. Ry., Montreal, through any agent of the C. P. Ry.

No person shall take into or have in his possession in the Temagaming Forest Reserve, during the close season for moose, reindeer or caribou, any gun, rifle, Mauser or other automatic pistol or any revolver or other firearm having a barrel of greater length than four inches.

#### FISHING.

Bass from June 16th to April 14th, except in the waters of Lake Erie west of Point Pelee and around Pelee Island, where it is from July 16th to May 24th.

Mascalonge, from June 16th to April 14th, except in Rice Lake, where it is from June 2nd to April 14th.

---

Owing to the fact that the Game Laws are frequently changed, absolute accuracy is not guaranteed.

Pickeral (dore), from May 16th to April 14th. Lake  
Huron and Lake St. Clair abolished.  
Salmon trout, from December 1st to October 31st.  
Speckled and brook trout, from May 1st to September  
14th.  
Sturgeon, from July 1st to April 30th.  
Whitefish, from December 1st to October 31st.

### FISHING LICENSES.

All persons are required to obtain permit to fish in the waters of Lake Nipigon and River Nipigon, which may be procured on application to the General Passenger Agent, C. P. Ry., Montreal, through any agent of the Company. For particulars of fees, see paragraph (b) under Nipigon Lake and River Fishery Regulations on page 6. Permits are not necessary in other inland waters from any one, excepting in inter-provincial waters, and then only from parties who cross for the day and who do not engage boats from Ontario boatmen or stop at Ontario hotels. The fee in such cases is \$5.00 per rod.

### ONTARIO GENERAL FISHERY REGULATIONS.

"Bass" shall mean and include small-mouthed black bass and large-mouthed black bass.

Whoever shall fish without a permit, lease or license in Provincial waters wherein fishing is prohibited except by lease or license, shall for each offence be liable to the penalty provided by section 53 of this Act, and costs; and in default of payment of such fines and costs, shall be imprisoned for a period not exceeding three months.

Any box, basket, crate, package or other utensil whatsoever, containing fish for shipment, whether caught in Provincial or private waters, shall be labelled with the names of the consignee and consignor, and shall have stated thereon the contents of such box, basket, crate, package or other utensil.

No one shall fish for, catch or kill, in any of the waters of the Province by angling, or shall carry away more than 8 small or large-mouthed black bass, 4 maskinonge, 12 pickeral (dore) or 4 lake trout, nor a greater number of speckled or brook trout than in the aggregate will weigh more than 10 pounds, nor more than 30 in number if they weigh less than 10 pounds, nor shall any small or large-mouthed black bass less than 10 inches in length, speckled trout less than 6 inches in length, no pickeral (dore) less than 15 inches in length, no maskinonge less than 30 inches in length, be retained, or kept out of the water; they must be returned to the water immediately alive and uninjured.

No one shall sell, barter or traffic in speckled trout, black bass or mascalonge taken or caught in Provincial waters before the first day of June, 1909.

(1) Excessive or wasteful fishing, or fishing during prohibited seasons, shall also involve the cancellation of the lease covering the waters in which it has taken place, or of any license or permit, with the knowledge or participation of the lessee or licensee.

(2) The contravention of any regulations or restrictions made or prescribed by or under any lawful authority in that behalf in respect of limitations in the size, numbers or weight of fish taken, or in respect of the fish which shall be required to be returned to waters whence taken, shall be deemed to be an infraction of the provisions of this section.

"Non-resident, tourist or summer visitor," shall mean any person who may during the spring, summer or autumn months be temporarily visiting, boarding, lodging or keeping house in any locality at a distance of over twelve miles from his usual place of residence.

Owing to the fact that the Game Laws are frequently changed, absolute accuracy is not guaranteed.

## EXPORT OF CERTAIN KINDS OF TROUT PROHIBITED

No one shall receive, ship, transport or have in possession for the purpose of shipping or transporting out of the Dominion of Canada any speckled trout, river trout or sea trout, taken or caught in the Province of Ontario, Quebec, New Brunswick, Nova Scotia and Prince Edward Island, provided:—

(a) Any person may so ship such trout caught, by him for sport, to the extent of 25 lbs. in weight, if the shipment is accompanied by a certificate to that effect from either the local fishery officer in whose district the fish were caught or from the local station agent adjacent to the locality in which they were caught, or is accompanied by copy of the official license or permit issued to the person making the shipment.

(b) No single package of such trout shall exceed 25 lbs. in weight, nor shall any person be permitted to ship more than one package during the season.

## ONTARIO—NIPIGON LAKE AND RIVER FISHERY REGULATIONS.

No one shall fish in the waters of Lake Nipigon in the District of Thunder Bay, in the River Nipigon in the same District, nor in any tributaries of the said lake or river, without first having obtained a permit or license from the Commissioner of Fisheries through the local overseer at Nipigon.

The following clauses, lettered (a) to (g) inclusive, shall apply to the waters in the next preceding section mentioned.

(a) One license or permit only may be issued to any applicant, and shall not be for a longer period than four weeks from the date of issue.

(b) The fee for such license or permit shall be \$15 for a period of two weeks or less, \$20 for three weeks and \$25 for four weeks, where the applicant is not a permanent resident of Canada; and \$5 for two weeks, and \$10 for four weeks where the applicant is a permanent resident of Canada.

(d) The said license or permit shall not be transferable, and the holder thereof shall produce and exhibit the same whenever called upon so to do by a fishery overseer.

(e) All fishing camps and fishing parties visiting the said waters shall be subject to the supervision of the fishery overseer or overseers.

(f) Such sanitary arrangements as the overseer may direct shall be made, and such directions as he may give for the disposal of refuse and the extinction of fires shall be complied with.

(g) The cutting of live timber, the property of Ontario, by persons holding a license or permit to fish in said waters, their servants or agents, is prohibited except where absolutely necessary for the purpose of camping and shelter, such as for tent poles, tent pins, and the like.

The preceding section shall also apply to Indians who act as guides, boatmen, canoeemen, camp assistants or helpers of any kind of any fishing party or person or persons who may hold a fishing license or permit during the time they are engaged with such party, person or persons, but shall not otherwise apply to Indians.

---

Owing to the fact that the Game Laws are frequently changed, absolute accuracy is not guaranteed.

# PROVINCE OF NEW BRUNSWICK

(OPEN SEASON).

## HUNTING.

**BIG GAME.**—Moose, caribou, deer or red deer, September 15th to November 30th.

Cow moose or cow caribou (of any age) and calf moose (under age of two years) are protected at all times.

No person shall kill or take more than one moose, one caribou and two deer during any one year.

Moose, caribou and deer are not to be hunted with dogs, or to be caught by means of traps and snares.

No person shall hunt, take, hurt, injure, shoot, wound, kill or destroy any moose or caribou in the night time, i.e., between one hour after sunset and one hour before sunrise.

A gun may not be carried in a moose or caribou country between November 30 and September 15 without first obtaining a permit from a game warden.

**OTHER GAME.**—Beaver, protected until July 1st, 1907.

Mink, fisher or sable, protected until 1906.

Muskrat, in Kings, Queens, and Sunbury Counties, March 10th to June 10th.

**GAME BIRDS.**—Partridge, Sept. 15 to Nov. 30.  
Woodcock and snipe, from September 15th to November 30th.

Wild geese, brant, teal, wood duck, dusky duck, commonly called black duck, September 2nd to November 30th.

Wild geese, brant, teal, wood duck, dusky duck, commonly called black duck, shall not be hunted with artificial light, nor with swivel or punt guns, nor trapped or netted at any time.

Sea-gulls, pheasants, song-birds and insectivorous birds, entirely protected.

Sunday shooting is prohibited.

## HUNTING LICENSES.

**NON-RESIDENTS** must not kill any moose, caribou or deer without having obtained a license from the Crown Lands Office, Fredericton, N.B., or from the Chief Game Commissioner, or any county or special game warden, by payment of a fee of \$50, license to be in force for one open season. License will give right to kill one bull moose, one bull caribou and two deer.

**RESIDENT'S License** \$2. Guides and camp help must be licensed, cost \$1.00, and are not allowed to shoot big game while so employed. Non-resident guides prohibited.

## TRANSPORTATION.

Every corporation, railway, express company, or other common carrier, or person acting as a common carrier, shall

---

Owing to the fact that the Game Laws are frequently changed, absolute accuracy is not guaranteed.

be guilty of an offence and liable to the penalty hereinafter provided, who, at any time or season, hereafter in any part of the Province:

- (a) Carries or transports from place to place any live moose, caribou or deer, or the carcass or any portion thereof, or the green hide of such game, unless the same be accompanied by the owner thereof, and be open to view and tagged or labelled with the owner's name and address;
- (b) Carries or transports without the Province any live game, or the carcass or any portion thereof, or the green hide or pelt of any game. Nothing herein shall apply to game transported or exported on the special permit of the Surveyor-General under the provisions of Section 49, or to the transportation of heads or hides of moose, caribou or deer, shipped or delivered to any bona fide taxidermist within the Province.

### FISHING.

Bass may be caught with hook and line at all times of year.

Lake trout, land-locked salmon, speckled trout, April 1st to September 30th.

Salmon, February 1st to August 15th.

The use of explosive materials to catch or kill fish is illegal.

### EXPORT OF CERTAIN KINDS OF TROUT PROHIBITED

No one shall receive, ship, transport or have in possession for the purpose of shipping or transporting out of the Dominion of Canada any speckled trout, river trout or sea trout, taken or caught in the Provinces of Ontario, Quebec, New Brunswick, Nova Scotia and Prince Edward Island; provided:—

(a) Any person may so ship such trout caught by him for sport, to the extent of 25 lbs. in weight, if the shipment is accompanied by a certificate to that effect from either the local fishery officer in whose district the fish were caught or from the local station agent adjacent to the locality in which they were caught or is accompanied by copy of the official license or permit issued to the person making the shipment.

(b) No single package of such trout shall exceed 25 lbs. in weight, nor shall any person be permitted to ship more than one package during the season.

## PROVINCE OF NOVA SCOTIA

(OPEN SEASON).

### HUNTING.

**BIG GAME.**—Moose, October 1st to December 31st, except in Island of Cape Breton where they are protected until 1915.

(No person shall kill more than two moose in one season, nor any calf moose under the age of one year).

Deer and caribou protected until October, 1910.

Dogs must not be allowed to hunt moose or caribou.

Bear, all year.

---

Owing to the fact that the Game Laws are frequently changed, absolute accuracy is not guaranteed.



**OTHER GAME.**—Beaver, protected.

Fox (yellow or red), at all times.

Hare or rabbit, November 1st, to November 28th.

Mink, November 2nd to February 28th.

Muskrat, November 2nd to February 28th.

Otter, protected until 1910.

**GAME BIRDS.**—Woodcock, snipe, teal, blue-winged duck, wood duck, August 20th to February 28th.

Blue wing duck in Cumberland County, September 1st to April 30th.

Pheasant, blackcock, capercalzie, ptarmigan, sharp-tailed grouse, spruce partridge or chukor partridge, protected at all times.

Ruffed grouse, commonly called partridge, October 1st to November 30th.

Cape Breton, the open season for birds, partridges excepted, is from August 20th to February 28th.

### HUNTING LICENSES.

**NON-RESIDENTS** are required to obtain licenses to shoot from the Provincial Secretary, from Clerks of Counties or from the agents of the Game Society in various parts of the Province.

License fee, for all game, \$30.

### FISHING.

Bass may be caught with hook and line at all times of the year.

Salmon, February 1st to August 15th.

Trout of all kinds and land-locked salmon, April 1st to September 30th.

### FISHING LICENSES.

**NON-RESIDENTS** are required to obtain licenses to fish, which may be obtained on application to the Fishery Warden. Fee for three months, \$5; fee for six months, \$10. No person shall kill in one day more than 12 bass, pike or perch, or 20 trout.

### EXPORT OF CERTAIN KINDS OF TROUT PROHIBITED.

No one shall receive, ship, transport or have in possession for the purpose of shipping or transporting out of the Dominion of Canada any speckled trout, river trout or sea trout, taken or caught in the Provinces of Ontario, Quebec, New Brunswick, Nova Scotia and Prince Edward Island; provided:—

(1) Any person may so ship such trout caught by him for sport, to the extent of 25 lbs. in weight, if the shipment is accompanied by a certificate to that effect from either the local fishery officer in whose district the fish were caught or from the local station agent adjacent to the locality in which they were caught or is accompanied by copy of the official license or permit issued to the person making the shipment.

(b) No single package of such trout shall exceed 25 lbs. in weight, nor shall any person be permitted to ship more than one package during the season.

Owing to the fact that the Game Laws are frequently changed, absolute accuracy is not guaranteed.

## PROVINCE OF MANITOBA

(OPEN SEASON).

### HUNTING.

**BIG GAME.**—All kinds of deer, including antelope, cabri, elk, or wapiti, moose, reindeer, or caribou, between December 1st and December 14th; and no one person may, during any one season or year, kill or take more in all than one of such animals.

Female deer, cabri, antelope, elk, wapiti, reindeer, moose and caribou, and fawns of such animals, protected.

Dogs used to hunt deer must not be allowed to run at large during close season.

**OTHER GAME.**—Beaver, otter, perpetually protected.

Fisher, or pekan and sable, October 2nd to May 14th.

Marten, November 2nd to April 14th.

Muskrat, January 1st to May 7th (must not be shot or shot at).

**GAME BIRDS.**—All varieties of grouse, including prairie chicken, and partridges, September 16th to November 14th; it is illegal for one person to kill more than 100 in one year or season or more than 20 in one day.

Pheasant, protected until September 15th, 1909.

Upland plover, July 1st to December 31st.

Woodcock, plover (other than upland plover), quail, snipe and sandpiper, August 2nd to December 31st.

Duck of all kinds, September 16th to December 31st.

Sunday shooting is entirely prohibited.

Sale and export of game are prohibited

### HUNTING LICENSES.

**NON-RESIDENTS** of the Province must secure a hunting license from the Minister of Agriculture at Winnipeg, fee \$100, for the season of the calendar year in which the license is issued, except such person be a British subject in which case the license fee shall be \$25.

### FISHING.

Mascalonge, May 16th to April 14th.

Pickarel (dore), May 16th to April 14th.

Speckled trout, May 2nd to September 14th.

Sturgeon, June 16th to May 14th.

Whitefish salmon or lake trout, December 1st to October

## THE NORTHWEST TERRITORIES

(Except unorganized territories).

(OPEN SEASON).

### HUNTING.

**BIG GAME.**—Mountain sheep and goat, 1st October to 15th December.

Antelope, 1st October to 15th November.

Caribou, moose, elk, wapiti, deer, 15th November to 30th November in Eastern Assinibola; 1st November to 15th December in other parts of the North West Territories.

The shooting of females and young of the above is prohibited.

---

Owing to the fact that the Game Laws are frequently changed, absolute accuracy is not guaranteed.

**SMALL GAME.**—Mink, fisher, marten, 1st November to 1st April.

Otter, 1st November to 1st May.

Muskrat, 1st November to 15th May.

Beaver is protected until 21st December, 1908.

**OTHER GAME.**—Ducks, geese and swans, 23rd August to 5th May.

Cranes, 1st August to 1st January.

Rails and Coots, 23rd August to 5th May.

Snipe, Sandpiper, plover, curlew, 23rd August to 5th May.

Grouse, partridge, prairie chicken, 15th September to 15th December.

Not more than 20 of the grouse family shall be killed in one day or 200 in a year.

The above open seasons are fixed by the new Ordinance for the protection of game, passed in 1903 and amended in 1904 and include the first date but not the last mentioned.

#### HUNTING LICENSES.

License for non-resident, \$25.00 for general shooting, \$15.00 for birds. Permits for guests may be had from guardians on payment of \$1.00.

#### FISHING.

Mascalonge, May 16th to April 14th.

Pickereel (doré), May 16th to April 14th.

Salmon Trout, December 16th to October 4th.

Speckled Trout, May 2nd to September 14th.

Sturgeon, June 16th to May 14th.

Whitefish, December 16th to October 4th.

### NORTHWEST TERRITORIES, UNORGANIZED

These regulations apply only to those portions of the Northwest Territories of Canada which are not included within the Provincial Districts of Assinibola, Alberta and Saskatchewan; it applies to the District of Keewatin.

(OPEN SEASON.)

#### HUNTING.

**BIG GAME.**—Musk oxen, October 16th to March 19th.

Elk or wapiti, moose, caribou, deer, mountain sheep and mountain goats, July 16th to September 30th and December 2nd to March 31st.

**OTHER GAME.**—Minks, fishers and martens, November 2nd to March 14th.

Otters and beavers, October 2nd to May 14th.

Musk rats, October 2nd to May 14th.

**SMALL GAME.**—Grouse, partridges, pheasants and prairie chickens, September 2nd to December 31st.

Wild swans, wild ducks and wild geese, September 2nd to January 14th.

**USE OF DOGS.**—No dogs shall be used at any time of the year, for hunting, taking, running, killing, injuring or in any way molesting musk oxen, buffalo and bison, or, during the close season, any of the other beasts or any of the birds mentioned in this Act.

---

Owing to the fact that the Game Laws are frequently changed, absolute accuracy is not guaranteed.

# PROVINCE OF BRITISH COLUMBIA

(OPEN SEASON.)

## HUNTING.

**BIG GAME.**—Moose (bull), September 1st to December 31st. Females and calves under one year protected.

Deer, September 1st to December 14th. Fawn under one year, protected.

Caribou, September 1st to December 31st. Females and calves, protected at all times.

Elk (wapiti), September 1st to December 31st. Females and calves under two years, protected. In Kootenay County, all elk protected until May 16th, 1907.

Mountain goat and sheep, September 1st to December 14th. Mountain sheep, ewes and lambs, protected.

Not more than five caribou may be killed by one person in any season, nor more than ten deer, two (bull) elk, two (bull) moose, two (bull) wapiti, five mountain goat or three mountain sheep (rams). Deer must not be hunted with dogs, or killed for hides alone.

The buying and selling of heads of mountain sheep, elk, moose or caribou is prohibited.

**SMALL GAME.**—Beaver, protected until 1911.

Hare, September 1st to December 31st.

Land otter and marten, November 2nd to March 31st.

**GAME BIRDS.**—Bittern, September 1st to February 28th.

Ducks of all kinds, September 1st to February 28th.

Not more than 250 ducks may be shot in one season.

Grouse of all kinds, including prairie chicken and partridge, September 1st to December 31st.

Heron, plover, September 1st to February 28th.

Partridge, (English, or gray, or Hungarian), pheasants, quail of all kinds are protected.

Insectivorous birds always protected.

## HUNTING LICENSE.

**NON-RESIDENTS**, other than military men of the British Army and Canadian Militia in actual service in the Province, are required to secure shooting license—fee \$50—which may be procured from any Provincial Government Agent.

## FISHING.

Salmon trout, November 14th to September 30th.

Salmon angling, no close season.

Trout, other than salmon, January 1st to September 30th.

Sturgeon, July 16th to May 31st.

Whitefish, November 14th to September 30th.

---

Owing to the fact that the Game Laws are frequently changed, absolute accuracy is not guaranteed.

## NEWFOUNDLAND

(OPEN SEASON.)

### HUNTING.

**GAME.**—Caribou, August 1st to January 31st, excepting from October 1st to October 20th, inclusive.

Beaver, protected until October, 1907.

Moose and elk, protected until January, 1912.

Otter, October 1st to March 31st.

Foxes, October 16th to March 14th.

Rabbits and hares, no close season.

Not more than two stag and one doe caribou to be killed in any one year by any one person. No person shall be allowed to hunt or kill caribou within five miles on either side of the railway track, from Grand Lake to Goose Brook.

Dogs must not be used to hunt caribou, nor may they be killed with hatchet or any weapon other than firearms, nor while crossing any pond, stream or watercourse.

**GAME BIRDS.**—Partridge, ptarmigan and other grouse, protected until January, 1911.

Curlew, plover, snipe or other wild or migratory birds, excepting wild geese, August 21st to January 11th.

### HUNTING LICENSES.

**NON-RESIDENTS** are required to obtain licenses. Fee, entitling the holder thereof to kill and take two stag and one doe caribou, \$50.00. Guides must be licensed, fee \$25.00, if non-residents. Licenses are issued by Stipendiary Magistrates, Justices of the Peace and Department of Marine and Fisheries.

Export of heads and carcasses permitted under certain conditions.

### FISHING.

Salmon, grilse, char or trout, in any lake, river, pond, brook or stream, January 16th to September 14th.

No license required to take fish with hook and line.

## STATE OF VERMONT

(OPEN SEASON.)

### HUNTING.

**GAME.**—Deer, having horns, October 23rd to 28th, 1905, October 22nd to 27th 1906.

(No person shall kill more than one deer with horns not less than 3 inches in length in one season.)

Beaver, caribou and moose, protected at all times.

Rabbits and hares, September 1st to April 30th.

Dogs must not be used to hunt deer.

**GAME BIRDS.**—English pheasant or English partridge, protected until 1909.

Ruffed grouse, partridge, woodcock, quail, wild duck, wild goose and plover, September 1st to December 31st.

Upland plover, August 15th to November 30th.

Not more than five of the birds mentioned may be killed in one day except wild duck, and not more than twenty wild duck may be killed in one day, and not more than fifteen ruffed grouse or partridge in one season.

Persons living without the State cannot kill any game bird except for consumption as food in the State.

---

Owing to the fact that the Game Laws are frequently changed, absolute accuracy is not guaranteed.

## TRANSPORTATION.

Deer or game birds taken from the State, must be accompanied by the owner, and open to view, tagged and plainly labelled with owner's name.

## FISHING

Black bass, June 15th to December 31st.

Mascalonge, June 15th to April 14th, except in Lake Champlain, where they may be taken at all seasons.

Wall-eyed pike, or pike perch, May 1st to December 31st, except in Lake Champlain, where season with hook and line extends throughout the year.

Brook trout, lake trout, or other varieties of trout, May 1st to July 31st.

Brook, rainbow, brown, or Loch Leven trout when less than six inches, black bass less than ten inches, and land-locked salmon, lake trout, or steel-head trout less than 12 inches, must be returned immediately to the water from which taken.

Not more than 24 ten-inch black bass to be taken in one day.

## STATE OF MAINE

(OPEN SEASON.)

### HUNTING.

**BIG GAME.**—Moose, October 15th to December 1st.

(No person shall kill more than one bull moose in one season.) Cow and calf moose, protected.

Deer, October 1st to December 15th.

(No person shall kill more than two deer in one season.)

Sagadahoc County, closed until October, 1905.

Androscoggin County, October is open season.

Cumberland, Kennebec, Knox, Lincoln, Waldo, Sagadahoc and York Counties, November is open season.

Isle au Haut, closed until 1907.

Swans Island, closed until 1908.

Caribou, protected until October, 1910.

### HUNTING LICENSES.

**NON-RESIDENTS** must pay a license fee of \$15.00 to hunt moose and deer, and it also gives right to kill game birds.

Dogs must not be used to hunt moose, caribou or deer.

Non-residents holding license may offer for transportation one bull moose and two deer, lawfully killed under rules prescribed.

**OTHER GAME.**—Mink, sable, muskrat or fisher, October 16th to May 1st.

Wild hare, or rabbit, April 1st to August 31st.

Beaver, protected at all times.

**GAME BIRDS.**—Wood, dusky, or black duck, teal and any and all ducks known as gadwall or gray duck, mallard, widgeon, pintail, baldpate, shoveller, redhead, scamp or blue bill, golden eyed, whistler, buffle head, ruddy and broad bills, September 1st to November 30th.

Ruffed grouse, partridge, woodcock. September 15th to December 1st. Sale prohibited.

Plover, snipe, sandpipers, August 1st to May 1st.

Quail, October 1st to December 1st.

No person shall in any one day kill more than 15 of each variety of above birds, except sandpipers, the number of which must not exceed 70. Sale forbidden.

---

Owing to the fact that the Game Laws are frequently changed, absolute accuracy is not guaranteed.

**NON-RESIDENTS** must pay a license fee of \$5.00 for hunting game birds and wild animals in open season prior to October 1st, but having paid \$5.00 for such, may pay \$10.00 additional, which gives them the right to hunt moose and deer.

Capercallie, or cock of the woods, black game so-called, or any species of the pheasant, except partridge, are protected.

Sunday shooting is prohibited.

#### TRANSPORTATION.

Game animals or game birds being transported must be open to view, tagged and plainly labelled with owner's name and address, and accompanied by him, and if moose, must have evidence of its sex; partridge must not be sold or taken out of state.

One pair of game birds may be transported to home or hospital in the State upon paying license fee and having card or permit attached as above.

Persons from out of the State may take lawful game with them by having them lawfully tagged, or may send the same to their home by procuring a license therefor. Ten birds of each kind may be taken to one's home.

#### CARELESS SHOOTING.

Whoever carelessly or negligently shoots, wounds or kills a person while hunting shall be subject to a penalty of not exceeding ten years' imprisonment, or a fine not exceeding \$1,000.00.

#### FISHING.

Black bass, pickerel, no close season, except by special law.

Blue-black trout are protected at all times.

Land-locked salmon, trout and togue, from when ice is out of lake or pond to October 1st, except Franklin County, which is May 1st to October 1st, St. Croix River and tributaries and all waters in Kennebec County, where open season is from time ice is out until September 15th. Sebago Lake open April 1st to September 30th.

White perch from July 1st to March 31st.

Inhabitants of the State may catch land-locked salmon, trout, and togue through the ice in February, March and April for their own family use, but not to exceed 20 pounds for any one family in any one day, in waters not prohibited by special law. No person shall take a trout less than five or salmon less than nine inches long.

There are restrictions in some counties regarding fishing.

#### TRANSPORTATION.

No person shall transport more than twenty-five pounds of land-locked salmon, trout, togue or white perch in all, at any one time, nor shall any such be transported except in the possession of the owner thereof, and plainly labelled thereon with owner's name and residence; and that except any person who has lawfully in his possession one trout, one togue, one land-locked salmon and one white perch, or

---

Owing to the fact that the Game Laws are frequently changed, absolute accuracy is not guaranteed.

ten pounds in all of either kind of fish, may send the same to his home or to any hospital in the State without accompanying same,, by purchasing of the duly constituted agent therefor a tag.

#### GUIDES.

**NON-RESIDENTS** entering upon wild lands ("wild lands" means lands in unorganized townships) who camp and kindle fires thereon while engaged in hunting or fishing, in the months May to November, both included, must procure a registered guide. This does not apply to any person who, while hunting or fishing, stops permanently at any hunting or fishing camp during such stay, which is owned or under the control of any registered guide or registered camp owner. Residents are not required to have a registered guide, but no registered guide shall be employed by or guide more than five non-residents at the same time during the months May to November, inclusive.

### STATE OF MICHIGAN

(OPEN SEASON.)

#### HUNTING.

**GAME.**—Deer, November 8th to November 30th. Deer protected on the Island of Bois Blanc and in counties of Lapeer, Huron, Sanilac, Tuscola, Macomb, Monroe, Allegan, Ottawa and St. Clair until January, 1906.

Unlawful to kill until 1908 in Lake, Osceola, Clare, Manistee, Wexford, Missaukee, Newaygo, Mecosta, Isabella, Benzie, Leelanau, Grand Traverse, Oceana and Gladwin Counties.

Moose, elk, caribou, protected until 1911.

Fawn protected.

Deer must not be killed in red coat, or fawn in spotted coat, nor in any waters in the State.

Dogs must not be used to hunt deer.

No person shall kill more than three deer in any one season.

**OTHER GAME.**—Beaver, protected until December 31st, 1906.

Otter, fisher, marten, November 15th to April 30th.

Mink, raccoon, skunk, muskrat, November 1st to August 31st.

Black, gray and fox-squirrel, October 15th to November 30th.

**GAME BIRDS.**—Partridge or pheasant, quail, spruce-hen, woodcock, October 20th to November 30th.

Partridge in upper peninsula, October 1st to November 30th.

Prairie chicken, protected until 1910.

Ducks, geese, brant and other wild water fowl, October 1st to November 30th, from one-half hour before sunrise until one hour after sunset.

Jack snipe, blue bill, canvas back, widgeon, pin tail, whistler, spoon bill, butter ball, sawbill ducks, March 2nd to April 10th.

Wild pigeon, wild turkey, Mongolian and English pheasants, protected until 1910.

Nests and eggs, song and insectivorous birds, perpetually protected.

---

Owing to the fact that the Game Laws are frequently changed, absolute accuracy is not guaranteed.



## HUNTING LICENSES.

**NON-RESIDENTS** must pay a license of \$25 to hunt deer to the Clerk of the County in which he proposes to camp. Resident's license, 75 cents.

## TRANSPORTATION.

All game animals or game birds transported under cover must be plainly marked on the outside of the package with the name of the consignor and consignee; the initial point of billing and the destination, together with itemized statement of the contents of such package. No deer or portion of a deer can be lawfully shipped unless a license tag accompanies same. No birds, game, or fish, the killing of which is at any time prohibited by law, can be shipped beyond the limits of this State.

## FISHING.

Land-locked salmon, grayling, speckled, Loch Leven, steelhead or California trout, May 1st to August 31st; except Maple River, Emmet County, May 1st to July 31st.

Minimum size trout, seven inches.

Unlawful to take from stocked streams for four years after first stocking.

Black bass, May 20th to April 1st.

Mascalonge, sturgeon and black, strawberry, green and white bass, March 1st to July 1st.

Unlawful to fish from inland lakes except with hook and line, or to take more than 50 fish in any one day, or to have more than 100 in possession at any one time.

There are restrictions in some counties.

## STATE OF WISCONSIN

(OPEN SEASON.)

### HUNTING.

**BIG GAME.**—Deer, last twenty (20) days of November.

Deer in Sauk, Adams, Columbia, Richland and Marquette may be hunted during last ten (10) days of November only.

Deer in counties of Sheboygan, Fond du Lac, Manitowoc and Calumet perpetually protected.

Not more than two may be killed by one person in one season.

Fawn are protected at all times.

Dogs must not be used to hunt deer.

**OTHER GAME.**—Rabbit, squirrels, July 1st to April 30th.

Otter, beaver, fisher, marten and muskrat, February 1st to April 30th. Muskrat houses must not be molested or destroyed at any time.

**GAME BIRDS.**—Woodcock, partridge, pheasant, prairie chicken, or prairie hen, grouse of all kinds, plover, September 1st to November 30th.

Wild duck, or brant, or any aquatic fowl and snipe, September 1st to December 31st.

Wild geese, September 1st to April 30th.

Swan, perpetually protected. Insectivorous birds always protected.

Mongolian, Chinese or English pheasant, and quail of all varieties, protected until September, 1905.

---

Owing to the fact that the Game Laws are frequently changed, absolute accuracy is not guaranteed.

## TRANSPORTATION.

To be transported all packages containing game must be marked in plain letters on the address side: 1. Name and address of shipper; 2.—Name and address of person to whom shipped; 3.—Number of each variety of game, animals or birds contained therein.

All game except rabbits and squirrels, must be accompanied by the hunter.

Any resident of this state holding a license may carry on the same train or conveyance with himself from point of shipment to place of destination, within this state, 25 altogether of woodcock, partridge, pheasant, prairie chicken or prairie hen, grouse of any variety, plover of any variety, or 50 altogether of aquatic fowl or snipe of any variety, if same are marked as provided by law.

Any non-resident of this state in possession of a non-resident's license may carry on the same train or conveyance with himself from point of shipment to boundary line of state altogether 50 of the birds, fowls, or animals of this state during one season, if the same are marked as provided by law.

It is unlawful for any transportation company or person to carry or transport for any resident of this state any deer or part thereof unless the same have attached to it section B of a resident hunting license, and the person so transporting shall detach from the license in the possession of the shipper section A of one of the coupons of said license which must correspond in number with section B, and send section A to the State Game Warden at Madison, Wisconsin.

It is unlawful for any transportation company or person to carry or transport for any non-resident of this state any deer or part thereof, unless the same have attached to it sections B and C of a non-resident hunting license, and the person so transporting shall detach from the license in the possession of the shipper section A of one of the coupons of said license which must correspond in number with sections B and C, and send section A to the State Fish and Game Warden at Madison, Wisconsin.

The person or company shipping deer under this law must cancel all coupons mentioned by stamping or writing thereon the date received for shipment, place received for shipment, and the name or initial of the person, company or corporation transporting same.

It is unlawful to transport any game or fish during the close season therefor.

## LICENSES.

**NON-RESIDENTS** are required to obtain licenses from the Secretary of State at Madison. The fee for license to hunt deer and all other game (protected), \$25.00; all game (protected), except deer, \$10.00.

**RESIDENTS** are required to obtain license from County Clerk of county in which he resides. The fee to hunt all game (protected), \$1.00.

## FISHING.

Black bass, mascalonge, pike, Oswego bass or yellow bass, May 25th to February 28th.

In Devil's Lake, Sauk County, black bass, Oswego bass or yellow bass, June 15th to December 14th.

---

Owing to the fact that the Game Laws are frequently changed, absolute accuracy is not guaranteed.

In Big Green Lake, in Green Lake County, black bass, Oswego bass or yellow bass, July 1st to February 28th.

Black or Oswego bass, pickerel or perch in Lake de Neveu, in Fond du Lac County, June 1st to August 31st.

**NOTE.**—Unlawful to take from waters above at any time black or Oswego bass or pickerel less than 8 inches long.

Trout of any variety, April 15th to April 31st.

All fish in Pewaukee Lake in Waukesha County, Devil's Lake in Sauk County and Delavan Lake in Walworth County, May 25th to November 30th.

All fish in Lakes Wingra, Waubesa, Kegonsa, Monona and Mendota, or from any streams or waters, connected with said lakes, all being in Dane County, May 10th to November 30th.

**NOTE.**—Perch, bullheads, suckers, carp and redhorse may be caught at any time with hook and line.

All fish in Wolf Lake, Glidner Lake, or Long Lake, and streams connected with said lakes, in Fond du Lac County, May 15th to March 14th.

#### TRANSPORTATION.

All packages offered for shipment containing fish must be marked on the address side in plain letters: 1.—Name and address of shipper; 2.—Name and address of person to whom shipped; 3.—Number of pounds of each kind of fish contained therein.

It is unlawful for any person, company or corporation to offer for transportation or to transport to any point within or without this state, any brook or rainbow trout, mascalonge, bass or pike, or any fish taken from the inland waters of the state except chubs, dace, suckers, carp, redhorse, sheepshead, dogfish, garfish, sturgeon, catfish and bullheads and as follows: A.—If marked as provided by law one package and no more, containing not more than twenty pounds of fish, or in lieu thereof two fish and no more, of any weight may be transported to any point within or without this state, by any person, provided that not more than one such shipment shall be made during one week by the same person: B.—Any package or shipment containing more than twenty pounds of fish or containing in lieu thereof more than two fish weighing in the total more than twenty pounds of any brook or rainbow trout, mascalonge, bass or pike, or fish taken from the inland waters of this state except chubs, dace, suckers, carp, redhorse, sheepshead, dogfish, garfish, sturgeon, catfish and bullheads may be transported to any point within this state, shipments to points without the state being unlawful, provided that the shipment be marked as provided by law and that the shipment be accompanied by the shipper on the same train from point of shipment to place of destination.

No fish common to the lakes or waters of Dane County shall be transported out of said county, except that during the open season therefor any person may take with him out of said county not to exceed twenty pounds or two fish which he himself has taken or caught.

#### OTHER PROVISIONS.

Unlawful to deposit any substance deleterious to fish life in the waters of this state. **NOTE.**—See exceptions in law.

---

Owing to the fact that the Game Laws are frequently changed, absolute accuracy is not guaranteed.

## GENERAL INFORMATION

### UNITED STATES FEDERAL GAME LAWS.

The following sections of the Act of May 25th, 1900, are commonly known as

#### THE LACEY ACT.

"An Act to enlarge the powers of the Department of Agriculture, prohibit the transportation by interstate commerce of game killed in violation of local laws, and other purposes."

Section 3.—That it shall be unlawful for any person or persons to deliver to any common carrier, or for any common carrier to transport from one State or Territory to another State or Territory, or from the District of Columbia or Alaska to any State or Territory, or from any State or Territory to the District of Columbia or Alaska, any foreign animals or birds, the importation of which is prohibited, or the dead bodies or parts thereof of any wild animals or birds, where such animals or birds have been killed in violation of the laws of the State, Territory, or District in which the same were killed: Provided, that nothing herein shall prevent the transportation of any dead birds or animals killed during the season when the same may be lawfully captured, and the export of which is not prohibited by law in the State, Territory, or District in which the same were killed.

Section 4.—That all packages, containing such dead animals, birds or parts thereof, when shipped by interstate commerce, as provided in Section 1 of this Act, shall be plainly and clearly marked, so that the name and address of the shipper and the nature of contents may be readily ascertained on inspection of the outside of such packages. For each evasion or violation of this Act, the shipper shall, upon conviction, pay a fine of not exceeding two hundred dollars; and the consignee knowingly receiving such articles so shipped and transported in violation of this Act, shall, upon conviction, pay a fine of not exceeding two hundred dollars, and the carrier knowingly carrying or transporting the same, shall, upon conviction, pay a fine of not exceeding two hundred dollars.

Section 5.—That all dead bodies, or parts thereof, of any foreign game animals, or game or song birds, the importation of which is prohibited, or the dead bodies, or parts thereof, of any wild game animals, or game or song birds transported into any State or Territory, or remaining therein for use, consumption, sale or storage therein, shall upon arrival in such State or Territory, be subject to the operation and effect of the laws of such State or Territory enacted in the exercise of its police powers, to the same extent and in the same manner as though such animals and birds had been produced in such State or Territory, and shall not be exempt therefrom by reason of being introduced therein in original packages or otherwise. This Act shall not prevent the importation, transportation, or sale of birds or bird plumage manufactured from the feathers of barnyard fowl.

# Export of Deer, Caribou and Moose

## CANADIAN CUSTOMS REGULATIONS

MEMORANDUM.

No. 1063 B

CUSTOMS DEPARTMENT.

Ottawa, 18th August, 1899.

To Collector of Customs:

The following Regulations respecting the Export of Deer, shot for sport by persons not domiciled in Canada, have been made and established, viz:—

1. Deer when shot for sport under Provincial or Territorial authority in Canada, by any person not domiciled in Canada, may be exported under the following conditions and limitations:—

1. The deer may be exported only at the Customs Ports of Halifax, Yarmouth, St. Stephen, McAdam Junction, Sherbrooke, Quebec, Stanstead Junction, Montreal, Ottawa, Prescott, Brockville, Kingston, Toronto, Niagara Falls, Fort Erie, Windsor, Sault Ste. Marie, Port Arthur, Wanata, B.C., and such other Ports as shall from time to time by the Minister of Customs be designated for the export of deer.

2. The exportation of deer in the carcase or parts thereof (except as to cured deer heads and hides of deer) shall be permitted only during or within fifteen days after the "open season," allowed for shooting deer under the laws of the Province or Territory where the deer to be exported has been shot.

3. No person shall in one year export more than the whole or parts of two deer, nor shall exportation of such deer be made by the same person on more than two occasions during one calendar year.

4. Deer in the carcase or any part thereof which has been killed in contravention of any Provincial or Territorial law shall not be exported, nor shall any deer in the carcase or parts thereof be exported without the permit of the Collector of Customs accompanying the shipment.

5. A person, not domiciled in Canada, who has shot deer for sport and not for gain or hire, under Provincial or Territorial Authority may make an export entry in duplicate of deer in the carcase or parts thereof so shot by him and allowed to be exported—upon subscribing and attesting before a Collector of Customs a Declaration in the following form to be annexed to said export entry, viz:

(AS PER FORM IN APPENDIX.)

6. The exporter shall produce his license or permit for shooting deer under Provincial or Territorial Authority to the Collector of Customs before the exportation of the deer, and the Collector shall endorse thereon a description of the quantity and parts entered for exportation.

The Collector of Customs at any Customs Port of Entry designated for the Export of Deer, upon receiving the said export entries, duly completed, may thereupon under the seal of the Custom House, issue his permit for the exportation of the deer, if satisfied as to the identity of the sportsman and that the exportation is not prohibited.

JOHN McDOUGALD,  
Commissioner of Customs.

APPENDIX

Form of Declaration to be made in connection with the Export of Deer, shot for sport by persons not domiciled in Canada.

I, ..... of ..... do solemnly and truly declare that the deer in the carcase or parts thereof described in the annexed Export Entry have been shot by me at ..... in Canada, for sport and not for gain or hire, under Authority of the License or Permit issued under Provincial or Territorial Authority herewith exhibited; that I am not domiciled in Canada; that I have not exported directly or indirectly within this calendar year deer in the carcase or parts thereof, shot by me in Canada during the present season, except as follows, viz.:

(I.)\* .....  
.....  
.....  
.....

that the deer described in the annexed Export Entry together with the deer heretofore exported by me within the present calendar year are not parts of more than two deer; and I verily believe that the exportation of the deer described in the annexed entry is not restricted.

.....  
Signature of Exporter..

Declared before me at .....

this .....day of .....

.....  
Collector of Customs.

(I.)\* Parts exported and place of exportation.

As export from Canada is permitted only at the ports specified, sportsmen should ship from the interior to the most convenient authorized Customs Port shown in paragraph 1.

Certificates of membership of hunting or fishing clubs are not valid licenses or permits under clause 6. The regular Provincial License for the current hunting season issued by a person authorized by the Commissioner of Lands, Forests and Fisheries must be produced.

On sufficient notice to General Passenger Agent, C. P. Ry., Montreal, direct, or through any C. P. Ry. agent, a passenger representative will meet any party of sportsmen, and assist them in making necessary Customs arrangements.

Tourists and Sportsmen's Outfits

CANADIAN CUSTOMS REGULATIONS

The articles which may be brought into Canada (in addition to wearing apparel, on which no duty is levied), as tourists' outfits, comprise guns, fishing rods, canoes, tents, camp equipment, cooking utensils, musical instruments, Kodaks, etc., etc.

A deposit of duty on the appraised value of the articles imported must be made with the nearest Collector on arrival in Canada, which deposit will be returned in full, provided the articles are exported from Canada within six months.

**REPORT FOR DEPOSIT ON TOURIST'S OUTFIT.**  
(In Duplicate.)

Entry No. .... Report No. ....

Port of ..... 190..

Tourist's Outfit imported by .....  
of ..... per .....  
from .....

Marks and Nos.	Descriptions of Articles	Value	Rate	Duty	Remarks re Exportation

The said deposit of ..... dollars has been received by me on the conditions stated by the importer.

(Stamp.) .....  
Customs Officer.

I, ..... (owner or agent) do solemnly declare that the above is a full and true statement of the description and values of the articles imported by me as Tourist's Outfit, with the amount of duty deposited thereon, the said deposit to be entered for duty if the articles are not duly exported within six months.

(Signature) .....

(Address) .....

If the tourist is unable to have his outfit exported and identified at the Customs Port where the deposit of duty is made, so as to receive back his deposit before leaving Canada, he can have the articles inspected and certified as below. The Tourist's Report of the articles exported and certified as aforesaid may then be mailed to the Customs Officer at the port of entry, who will forward a remittance, by mail, for the money deposited (less expense of remittance).

The articles which may be brought in as Tourists' Outfits, comprise: Guns, Fishing Rods, Canoes, Tents, Camp Equipment, Cooking Utensils, Musical Instruments, Kodaks etc.

Declaration as to return of Outfit, attested before a Customs Officer in Canada or at a place out of Canada.

Articles described herein inspected by me at .....  
this ..... day of ..... 190..  
and exported or landed as declared.

Sworn to before me,

(Stamp.) .....  
Customs Officer.

I, ..... (owner or agent) do solemnly declare that the identical goods hereinbefore described are now presented for inspection, the same having been delivered for exportation from the port of .....  
per ..... or landed at .....  
from ..... per .....

(Signature)

File 37827.

No. 1006 B.

On sufficient notice to General Passenger Agent C. P. Ry., Montreal, direct, or through any C. P. Ry. agent, a passenger representative will meet any party of sportsmen and assist them in making necessary Customs arrangements, etc.

## Protection of Forests from Fire

The value of the Canadian forests can hardly be over-estimated, although the destruction of small portions of them by fires amounts annually to a serious item. Anyone who has been in a district over which a fire has recently passed will appreciate the utter ruin of the district for several years for the tourist, the hunter, and the angler; and we believe that every true sportsman is glad to do anything in his power to prevent destruction of the forests and will observe carefully the following suggestions of the fire rangers:—

"The greatest care should be exercised between April 1st and October 31st, and if a fire is made in the forest, "or a distance of less than half a mile therefrom, or "upon any island, for cooking or obtaining warmth, "the maker should—

- 1st. Select a locality in the neighborhood of which there is the smallest quantity of vegetable matter, dead wood, branches, brush wood, dry leaves or resinous trees;
- 2nd. Clear the place in which he is about to light the fire by removing all vegetable matter, dead trees, branches, brush wood, and dry leaves, from the soil within a radius of ten feet from the fire;
- 3rd. Exercise and observe every reasonable care and precaution to prevent such fire from spreading, and carefully extinguish the same before quitting the place.

"Great care should be exercised to see that burning "matches, ashes of pipes and lighted cigars, or burning "gun wadding, or any other burning substance, should "be completely extinguished before the sportsman "leaves the spot.  
"Too much care cannot be exercised in these important "matters."

(206238)

Regulations given herein are latest received, Sept. 6th, 1905.

.NOTE—This will cancel sixth and previous issues.



# Publications

Issued by the

# Canadian Pacific Railway Co.

- "THE NEW HIGHWAY TO THE ORIENT"  
 "SUMMER TRIPS"  
 "OPEN SEASONS—FISHING AND SHOOTING"  
 "FISHING AND SHOOTING"  
 "SPORTSMAN'S MAP OF CANADA"  
 "CHINA AND JAPAN HANDBOOK"  
 "WESTWARD TO THE FAR EAST"  
A GUIDE TO THE PRINCIPAL CITIES OF JAPAN AND CHINA  
 "HOMEWARD BOUND FROM CALIFORNIA"  
 "ANNOTATED TIME-TABLE"—EAST AND WESTBOUND  
 "AROUND THE WORLD"  
 "CLIMATES OF CANADA"  
 "QUEBEC" "MONTREAL"  
 "COMPARTMENT CARS" "TOURIST CARS"  
 "ST. ANDREWS-BY-THE-SEA"  
 "ACROSS CANADA TO AUSTRALASIA"  
 "THE GLACIERS"  
 "THE CHALLENGE OF THE MOUNTAINS"  
ALSO NUMEROUS PAMPHLETS DESCRIPTIVE OF MANITOBA; THE CANADIAN  
 NORTH-WEST TERRITORIES AND BRITISH COLUMBIA  
 "WESTERN CANADA" "BRITISH COLUMBIA"

These publications are handsomely illustrated, and contain much useful information in interesting shape. Time-Tables with Notes will be found a valuable companion for all Transcontinental travellers.

Copies may be obtained FREE from Agents of the Company, or will be mailed to any address on application to undersigned.

The Company has also published a new Map, on the polar projection, showing the whole of the northern hemisphere, and the Canadian Pacific Railway's Around the World Route in a novel and interesting way, and another of Canada and the northern half of the United States, showing the entire system of the Company in detail. A sporting map of Canada, showing the best regions for fish and game, is also issued. These maps will be given away for public and prominent display.

- |  |  |
|--|--|
| <p><b>C. B. FOSTER</b><br/>District Passenger Agent,<br/>71 Yonge St., cor. King, Toronto</p> <p><b>H. J. COLVIN</b><br/>District Passenger Agent,<br/>362 Washington Street, Boston</p> <p><b>W. R. CALLAWAY</b><br/>General Passenger Agent,<br/>Soo Line, Minneapolis</p> <p><b>M. ADSON</b><br/>General Passenger Agent,<br/>Duluth. South Shore &amp; Atlantic Ry.,<br/>Duluth, Minn.</p> <p><b>A. C. SHAW</b><br/>General Agent, Passenger Dept.,<br/>228 South Clark St., Chicago, Ill.</p> <p><b>E. J. COYLE</b><br/>Asst. General Passenger Agent,<br/>Vancouver, B.C.</p> <p><b>F. R. PERRY</b><br/>District Passenger Agent,<br/>St. John, N.B.</p> <p><b>E. V. SHRYVER</b><br/>Asst. Traffic Manager,<br/>458 Broadway, New York</p> | <p><b>A. E. EDMONDS</b><br/>City Passenger Agent,<br/>7 Fort Street West, Detroit, Mich.</p> <p><b>M. M. STERN</b><br/>District Passenger Agent,<br/>Palace Hotel Bldg., San Francisco</p> <p><b>W. T. PAYNE</b><br/>General Traffic Agent for Japan,<br/>Yokohama, Japan</p> <p><b>UNION S.S. CO. OF N.Z., LTD.</b><br/>Managing Agents,<br/>Auckland, N.Z.</p> <p><b>WILLIAM STITT</b><br/>General Passenger Agent,<br/>Canadian Australian Line,<br/>Sydney, Australal</p> <p><b>D. E. BROWN</b><br/>General Agent China and Japan, etc.<br/>Hong Kong</p> <p><b>ARCHER BAKER</b><br/>European Manager,<br/>42-45 Charing Cross, S.W. } London.<br/>67 and 68 King William St., E.C. } Eng.<br/>67 St. Vincent Street, Glasgow<br/>24 James Street, Liverpool</p> |
|--|--|

- C. E. McPHERSON**, General Passenger Agent, Western Lines, Winnipeg.  
**C. E. E. USSHER**, General Passenger Agent, Eastern Lines, Montreal.  
**ROBERT KERR**, Passenger Traffic Manager, Montreal.

# LIST OF AGENCIES

Adelaide, South Aus.	Australasian United Steam Nav. Co. (Ltd.)
Amoy, Chinn.	Jardine, Matheson & Co.
Auckland N.Z.	Union S. S. Co. of New Zealand (Ltd.)
Baltimore, Md.	Arthur W. Robson, Pass. & Tkt. Agt., 127E. Baltimore St.
Batavia, Javn.	Maclaine, Watson & Co.
Battle Creek, Mich.	E. C. Oviatt, Travelling Passenger Agent, 303 Lake Ave.
Bellingham, Wnsh.	W. H. Gordon, Passenger Agent ..... 1223 Dock St.
Bembny, Indn.	Ewart, Latham & Co.
Boston, Mass.	Thomas Cook & Son ..... 13 Esplanade Road
Brisbane, Qd.	H. J. Colvin, Dist. Pass. Agt.
Brockville, Ont.	G. A. Titcomb, City Pass Agent... 362 Washington St.
Buffalo.	British India and Queensland Agency Co. (Ltd.)
Calcutta, India.	Geo. E. McGlade, City Ticket Agt. { Cor. King St. and Court House Ave
Canton, China.	R. A. Burford, City Pass. and Frt. Agt. .... 233 Main St.
Chicago, Ill.	Thomas Cook & Son ..... 9 Old Court House St.
Cincinnati, Ohio.	Gillanders, Arbutnot & Co.
Cleveland, Ohio.	Jardine, Matheson & Co.
Detroit, Mich.	A. C. Shaw, Gen. Agt. Pass. Dept., 232 South Clark St.
Duluth, Minn.	W. A. Kittermaster, Gen. Agt., Frt. Dept., 234 La Salle St.
Everett, Wnsh.	Geo. A. Clifford, Trav. Pass. Agt. .... 23 Carew Building
Glasgow, Scotland.	B. R. White, Freight Agent ..... 7 Fort St. W.
Haitax, N.S.	W. R. Haldane, District Freight Agent
Hobart, Tasmania.	A. E. Edmonds, City Passenger Agent, D. S. S. & A. Ry., Manhattan Building.
Hong Kong.	A. B. Winter, Ticket Agent ..... 1515 Hewitt Ave.
Honolulu, H.I.	Thos. Russell, Agent ..... 67 St. Vincent St.
Kingston, Jamaica.	I. D. Chipman, City Pass. and Frt. Agt. .... 107 Hollis St.
Kobe, Japnn.	W. J. Grant, Commercial Agent, Cor. King & James Sts.
Liverpool, Eng.	Union S. & Co. of New Zealand (Ltd.)
London, Eng.	D. E. Brown, General Agent, China and Japan, Etc.
London, Ont.	Theo. H. Davies & Co. (Ltd.)
Milbourne, Aus.	George and Branday.
Milwaukee, Wis.	G. Millward ..... 14A Maye-machi
Minneapolis, Minn.	J. J. Gilbertson, Traffic Agent ..... 24 St. James St.
Montreal, Qun.	Archer Baker, European Manager ..... 62-65 Charing Cross, S.W.
Nagasaki, Japnn.	W. Fulton, City Passenger Agent ..... 67-68 King William St., E.C.
Nelson, N.C.	Union S.S. Co. of New Zealand (Ltd.)
New York, N.Y.	A. G. G. Lauder, Freight Agent ..... 518-520 Herman Bldg.
Ningora Falls, N.Y.	W. B. Chandler, Agent Soo Line ..... 119 South Third St.
Ottawa, Ont.	H. J. Hebert, Gen. Agt. Pass. Dept., Windsor St. Station
Paris, France.	A. E. Lalonde, City Passenger Agent ..... 129 St. James St.
Philadelphia, Pa.	J. Corbett, Gen. Foreign Frt. Agt., Board of Trade Bldg.
Pittsburg, Pa.	Holme, Ringer & Co.
Portland, Me.	J. S. Carter, District Passenger Agent
Portland, Ore.	E. V. Skinner, Assistant Traffic Manager, 458 Broadway
Quebec, Que.	International Sleeping Car Co. .... 381 Fifth Ave.
San Francisco, Cal.	D. Isaacs ..... Prospect House
Seattle, Wnsh.	Geo. Duncan, City Passenger Agent ..... 42 Sparks St.
Shanghai, Chinn.	Hernu, Peron & Co. (Ltd.) { 61 Boulevard Hansman
Sherbrooke, Qun.	International Sleeping Car Co. .... 3 Place de l'Opera
Sydney, Aus.	H. McMurtrie, Frt. and Pass. Agt. .... 629-631 Chestnut St.
Tacoma, Wash.	F. W. Salisbury, Dist. Frt. and Pass. Agt., 510 Frick Bldg.
Toronto, Ont.	J. J. McCormick & Co., Ticket Agents, 506 Smithfield St.
Vancouver, B.C.	H. A. Snow, Ticket Agt., Maine Central Rd., Union Depot
Victoria, B.C.	F. R. Johnson, Passenger and Freight Agt., 142 Third St.
Washington, D.C.	J. Hone, Jr., City Passenger Agent ..... 30 St. John Street cor. Palace Hill.
Winnipeg, Mnn.	T. R. Harvey, C. P. A., F. E. Ketchum, Depot Tkt Agt.
Yokohama, Japan.	F. R. Perry, D. P. A. .... 8 King St.
	W. H. C. Mackay, City Ticket Agent ..... 49 King St.
	C. E. Benjamin, Trav. Pass. Agent ..... 315 Chestnut St.
	W. M. Porteous, Freight Agent. ....
	W. S. Thorn, A. G. P. A., Soo Line ..... 379 Robert St.
	M. M. Stern, District Freight and Passenger Agent .... } Palace Hotel Building
	G. W. Hallock, C. P. A., Pac. Coast S.S. Co. .... } 627 Market St.
	4 New Montgomery St.
	W. H. Gardiner, G. A. F. D. .... } Mutual Life Building,
	A. B. Calder, G. A. P. D. .... } 609 Firat Ave.
	A. Ross Owen.
	E. H. Sewell, City Passenger Agt ..... 6 Commercial St.
	Union S.S. Co. of New Zealand (Ltd.)
	Wm. Stitt, Gen. Pass. Agt., Can.-Australian S.S. Line
	Joseph W. Draper, Frt. and Pass. Agt., 917 Pacific Ave.
	C. B. Foster, D. P. A. .... 71 Yonge Street
	W. Maughan, City Ticket Agent ..... 1 King St. E.
	W. R. Thomson, Ticket Agent.
	Geo. L. Courtney, D. F. & P. A. .... 86 Government St.
	David H. Morse, F. & P. A., Bond Bldg. 14 St. & N.Y. Ave.
	A. C. Smith, City Tkt. Agt., Cor. Main St. & McDermott Ave.
	Wm. T. Payne, Gen. Traffic Agent for Japan ..... 14 Bond





