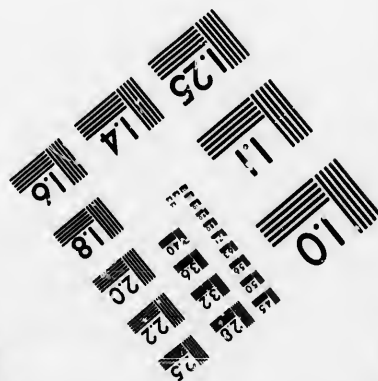
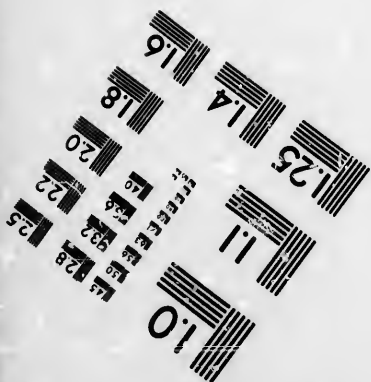
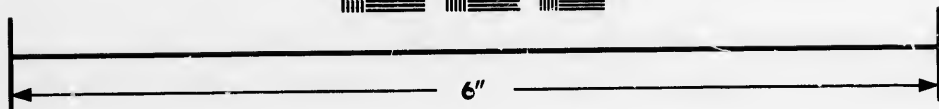
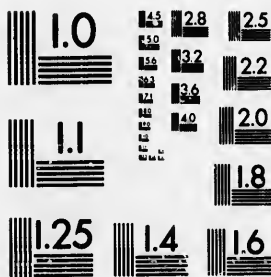


**IMAGE EVALUATION
TEST TARGET (MT-3)**



**Photographic
Sciences
Corporation**

23 WEST MAIN STREET
WEBSTER, N.Y. 14580
(716) 872-4503

2.8
2.5
2.2
2.0
1.8

**CIHM/ICMH
Microfiche
Series.**

**CIHM/ICMH
Collection de
microfiches.**



Canadian Institute for Historical Microreproductions / Institut canadien de microreproductions historiques

10
51

© 1987

Technical and Bibliographic Notes/Notes techniques et bibliographiques

The Institute has attempted to obtain the best original copy available for filming. Features of this copy which may be bibliographically unique, which may alter any of the images in the reproduction, or which may significantly change the usual method of filming, are checked below.

L'Institut a microfilmé le meilleur exemplaire qu'il lui a été possible de se procurer. Les détails de cet exemplaire qui sont peut-être uniques du point de vue bibliographique, qui peuvent modifier une image reproduite, ou qui peuvent exiger une modification dans la méthode normale de filmage sont indiqués ci-dessous.

- | | |
|---|---|
| <input type="checkbox"/> Coloured covers/
Couverture de couleur | <input type="checkbox"/> Coloured pages/
Pages de couleur |
| <input type="checkbox"/> Covers damaged/
Couverture endommagée | <input type="checkbox"/> Pages damaged/
Pages endommagées |
| <input type="checkbox"/> Covers restored and/or laminated/
Couverture restaurée et/ou pelliculée | <input type="checkbox"/> Pages restored and/or laminated/
Pages restaurées et/ou pelliculées |
| <input type="checkbox"/> Cover title missing/
Le titre de couverture manque | <input checked="" type="checkbox"/> Pages discoloured, stained or foxed/
Pages décolorées, tachetées ou piquées |
| <input type="checkbox"/> Coloured maps/
Cartes géographiques en couleur | <input type="checkbox"/> Pages detached/
Pages détachées |
| <input checked="" type="checkbox"/> Coloured ink (i.e. other than blue or black)/
Encre de couleur (i.e. autre que bleue ou noire) | <input checked="" type="checkbox"/> Showthrough/
Transparence |
| <input type="checkbox"/> Coloured plates and/or illustrations/
Planches et/ou illustrations en couleur | <input type="checkbox"/> Quality of print varies/
Qualité inégale de l'impression |
| <input type="checkbox"/> Bound with other material/
Relié avec d'autres documents | <input type="checkbox"/> Includes supplementary material/
Comprend du matériel supplémentaire |
| <input type="checkbox"/> Tight binding may cause shadows or distortion along interior margin/
La reliure serrée peut causer de l'ombre ou de la distorsion le long de la marge intérieure | <input type="checkbox"/> Only edition available/
Seule édition disponible |
| <input type="checkbox"/> Blank leaves added during restoration may appear within the text. Whenever possible, these have been omitted from filming/
Il se peut que certaines pages blanches ajoutées lors d'une restauration apparaissent dans le texte, mais, lorsque cela était possible, ces pages n'ont pas été filmées. | <input type="checkbox"/> Pages wholly or partially obscured by errata slips, tissues, etc., have been refilmed to ensure the best possible image/
Les pages totalement ou partiellement obscurcies par un feuillet d'errata, une pelure, etc., ont été filmées à nouveau de façon à obtenir la meilleure image possible. |
| <input checked="" type="checkbox"/> Additional comments:/
Commentaires supplémentaires:
[Printed ephemera] 1 sheet, [6] p. | |

This item is filmed at the reduction ratio checked below/
Ce document est filmé au taux de réduction indiqué ci-dessous.

10X	14X	18X	22X	26X	30X
<input type="checkbox"/>	<input checked="" type="checkbox"/>	<input type="checkbox"/>	<input type="checkbox"/>	<input type="checkbox"/>	<input type="checkbox"/>
12X	16X	20X	24X	28X	32X

The copy filmed here has been reproduced thanks to the generosity of:

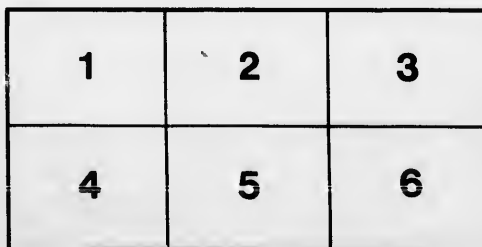
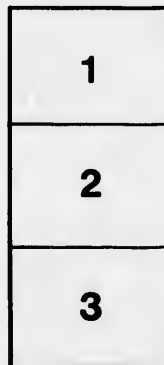
Metropolitan Toronto Library
Canadian History Department

The images appearing here are the best quality possible considering the condition and legibility of the original copy and in keeping with the filming contract specifications.

Original copies in printed paper covers are filmed beginning with the front cover and ending on the last page with a printed or illustrated impression, or the back cover when appropriate. All other original copies are filmed beginning on the first page with a printed or illustrated impression, and ending on the last page with a printed or illustrated impression.

The last recorded frame on each microfiche shall contain the symbol \rightarrow (meaning "CONTINUED"), or the symbol ∇ (meaning "END"), whichever applies.

Maps, plates, charts, etc., may be filmed at different reduction ratios. Those too large to be entirely included in one exposure are filmed beginning in the upper left hand corner, left to right and top to bottom, as many frames as required. The following diagrams illustrate the method:



L'exemplaire filmé fut reproduit grâce à la générosité de:

Metropolitan Toronto Library
Canadian History Department

Les images suivantes ont été reproduites avec le plus grand soin, compte tenu de la condition et de la netteté de l'exemplaire filmé, et en conformité avec les conditions du contrat de filmage.

Les exemplaires originaux dont la couverture en papier est imprimée sont filmés en commençant par le premier plat et en terminant soit par la dernière page qui comporte une empreinte d'impression ou d'illustration, soit par le second plat, selon le cas. Tous les autres exemplaires originaux sont filmés en commençant par la première page qui comporte une empreinte d'impression ou d'illustration et en terminant par la dernière page qui comporte une telle empreinte.

Un des symboles suivants apparaîtra sur la dernière image de chaque microfiche, selon le cas: le symbole \rightarrow signifie "A SUIVRE", le symbole ∇ signifie "FIN".

Les cartes, planches, tableaux, etc., peuvent être filmés à des taux de réduction différents. Lorsque le document est trop grand pour être reproduit en un seul cliché, il est filmé à partir de l'angle supérieur gauche, de gauche à droite, et de haut en bas, en prenant le nombre d'images nécessaire. Les diagrammes suivants illustrent la méthode.

30 9/10

25 9/10

- No. 14. Six Octave, single set of Reeds, carved Legs and Lyre; in elegant Rosewood Case \$135 00
- No. 15. Six Octave, single set of Reeds; in elegant Rosewood Case, \$125 00
- No. 16. Five Octave, single set of Reeds, elegantly carved Legs and Lyre; in elegant Rosewood Case, extra finish, \$110 00
- No. 17. Five Octave, handsome Rosewood Case, superior finish, \$100 00
- No. 18. Five Octave, Rosewood Case, plain finish, carved Lyre, \$80 00
- No. 19. Five Octave, plain Walnut Case, \$70 00
- No. 20. Four and a half Octave, Walnut Case, \$60 00
- No. 21. Four Octave, Walnut Case, \$50 00

20 9/10 dis

Pianos.

We also keep constantly on hand PIANOS, of different styles and prices, by the best makers in the United States.



Card.

In offering to the public our ORGANS, we respectfully invite for their careful and critical examination, being the closer the scrutiny, the more evident is our superiority over all other Instruments. It is our earnest endeavor to produce the best possible, regardless of cost. Our Instruments are of Canadian manufacture, and may, we trust, be safely trusted, when seen, to speak for their merits.

For the past year, the large demand has rendered it impossible to meet all orders as you could have desired; but with the instruments now at our command, we feel warranted to assure our patrons that their orders will be promptly filled, and solicit a continuance of their patronage.

AN ILLUSTRATED CATALOGUE

WITH FULL DESCRIPTION OF THE INSTRUMENTS, AND WILL BE SENT FREE TO ANY APPLICANT.

A LIBERAL DISCOUNT TO CHURCHES AND SCHOOLS.

ANDRUS BROTHERS

Manufacturers of and Dealers in

ORGANS, MELODEONS AND

London, Ontario



Card.

to the public our ORGANS and ME-
respectfully invite for them the most
critical examination, being confident that
scrutiny, the more evident will be their
superiority over all other instruments of the class.
Our best endeavor to produce the *best work*
possible, regardless of cost. Our instruments are of
superior manufacture, and may, we sincerely believe,
be trusted, when seen, to speak for their own

For the past year, the large demand has rendered
difficult to meet all orders as punctually as we
desire; but with the increased facilities
at our command, we feel warranted in assuring
that their orders will be promptly met,
and the continuance of their patronage.

ILLUSTRATED CATALOGUE
GIVING FULL DESCRIPTION OF STYLES,
AND SENT FREE TO ANY ADDRESS.

DISCOUNT TO CLERGYMEN,
CHURCHES AND SCHOOLS.

ANDRUS BROTHERS,

Manufacturers of and Dealers in

MELODEONS AND PIANOS,

London, Ont.

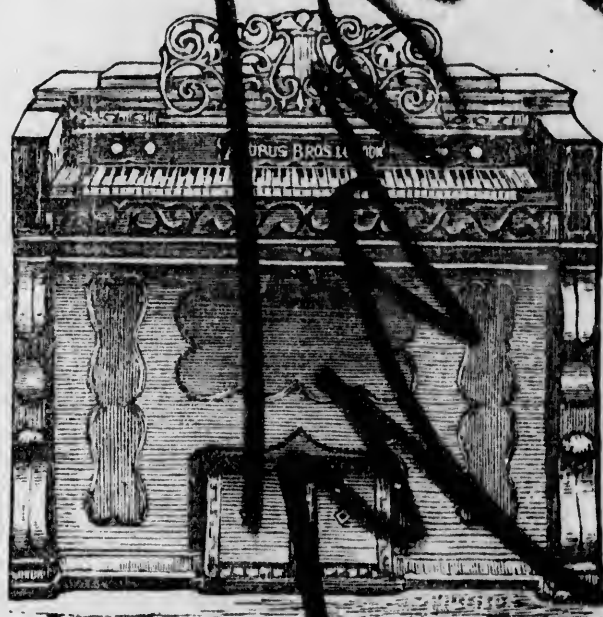


EVERY INSTRUMENT WARRANTED
FIVE YEARS!

PRICE LIST

ANDRUS BROS'

REVISED SEPTEMBER, 1871,



CELEBRATED

ORGANS & MELODEONS.

OFFICE AND WAREHOUSES:

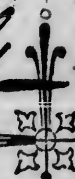
~~Palmer's Block, Richmond Street,~~

~~Opposite W. F. Cannon's Book Store, and opposite
the Advertising Office.~~

LONDON, ONTARIO

L. 35 Dundas St.

ADVERTISER STEAM PRESSES.



James papers

1611. *Andrus*

TO THE PUBLIC.

In presenting our REVISED PRICE LIST, it is gratifying to record the unprecedented success achieved by our

ORGANS AND MELODEONS;

relying solely on their intrinsic merits, they have acquired an enviable reputation, and wide spread popularity, and are acknowledged, by the first musical critics, to be the best instruments in the world. Their matchless beauty and finish, purity of voicing, prompt speech, extreme delicacy and quickness of touch, and rich, full tone, have won the most flattering encomiums, and elicited the enthusiastic admiration, of all who have seen and heard them. Unsolicited testimonials are constantly received, expressing their unqualified satisfaction.

Employing the best mechanical talent in the country, everything that artistic skill, taste, and long experience can suggest, is employed, to make them both musically and externally *the best*. Careful attention is paid to the smallest details in their construction, and the very best materials are used throughout. It is our aim to manufacture Instruments combining more valuable improvements, better style and finish, and more for your money than any now made. We prefer to let our work be judged by its merits.

PRICE LIST

Andrus Brothers'

- No. 1. Two full six Octave sets of Reed parts of sets, including Celeste Bass, six Stops, Knee Swell, Ivory Keys; in elegant Pannelled Rose Mottled Walnut Veneered Cases, highly polished; carved Ornaments and Brackets,
- No. 2. Two full six Octave sets of Reed parts of sets, including Celeste Bass, six Stops, Knee Swell, Ivory Keys; in solid Pannelled Walnut Cases, highly polished; carved Brackets,
- No. 3. Five and a half Octave, two sets of parts of sets, including Celeste, six Stops, Celeste and Sub-Bass, Knee Swell, Ivory-faced Keys; in Pannelled Walnut Cases, highly polished; carved Ornaments and Brackets,
- No. 4. Five and a half Octave, two sets of parts of sets, including Celeste, Knee Swell, four Stops; in Pannelled Walnut Cases, highly polished; carved Ornaments and Brackets,
- No. 5. Two full five Octave sets of parts of sets, including Celeste, two parts of sets, including Celeste and Sub-Bass, six Stops, Knee Swell, Ivory-faced Keys; in elegant Pannelled Walnut Cases, highly polished; carved Ornaments and Brackets,

PRICE LIST.

Brothers' Organs.

six Octave sets of Reeds, and two
 sets, including Celeste and Sub-
 Stops, Knee Swell, Ivory-faced
 elegant Pannelled Rosewood, or
 Walnut Veneered Cases, highly
 ; carved Ornaments and Brackets \$250 00
 six Octave sets of Reeds, and two
 sets, including Celeste and Sub-
 Stops, Knee Swell, Ivory-faced
 in solid Pannelled Walnut Cases,
 Brackets, \$225 00
 and a half Octave, two sets of Reeds,
 os, Celeste and Sub-Bass, Knee
 Ivory-faced Keys; in elegant
 ed Walnut Cases, carved Orna-
 and Brackets, \$200 00
 and a half Octave, two sets of Reeds,
 well, four Stops; in handsome
 ed Walnut Cases, \$175 00
 and five Octave sets of Reeds, and
 ts of sets, including Celeste and
 s, six Stops, Knee Swell, Ivory-
 ys; in elegant Pannelled Rose-
 or Mottled Walnut veneered Cases,
 polished, carved Ornaments and
 s, \$175 00

30% discount on these

- No. 6. Five Octave, two sets of Reeds, four Stops, Knee Swell; in elegant Pannelled Walnut Cases, \$150 00
- No. 7. Five Octave, two sets of Reeds, Knee Stop, Automatic Swell, carved Brackets, in elegant Pannelled Walnut Cases, . \$135 00
- No. 8. Five Octave, two sets of Reeds, Knee Stop, Automatic Swell; Plain Walnut Cases, \$120 00
- No. 9. Five Octave, single set of Reeds, Plain Walnut Cases, Automatic Swell, . . . \$90 00

25% off

Melodeons.

- No. 10. Six Octave, two sets of Reeds, four Stops, four round Corners, border Front, carved Legs and Lyre, Top Mouldings, bevelled Top, Ivory-faced Keys; in elegant Rosewood Case, extra Finish, \$185 00
- No. 11. Six Octave, two sets of Reeds, four Stops, Front round Corners, bevelled Top and plain Legs; in elegant Rosewood Case, . \$170 00
- No. 12. Five Octave, two sets of Reeds, four round Corners, four Stops, Border Front, carved Legs and Lyre, Ivory-faced Keys; in elegant Rosewood Case, extra finish, . . . \$155 00
- No. 13. Five Octave, two sets of Reeds, four Stops, Front round Corners; in handsome Rosewood Case, \$140 00

30% disc.

30% disc.

